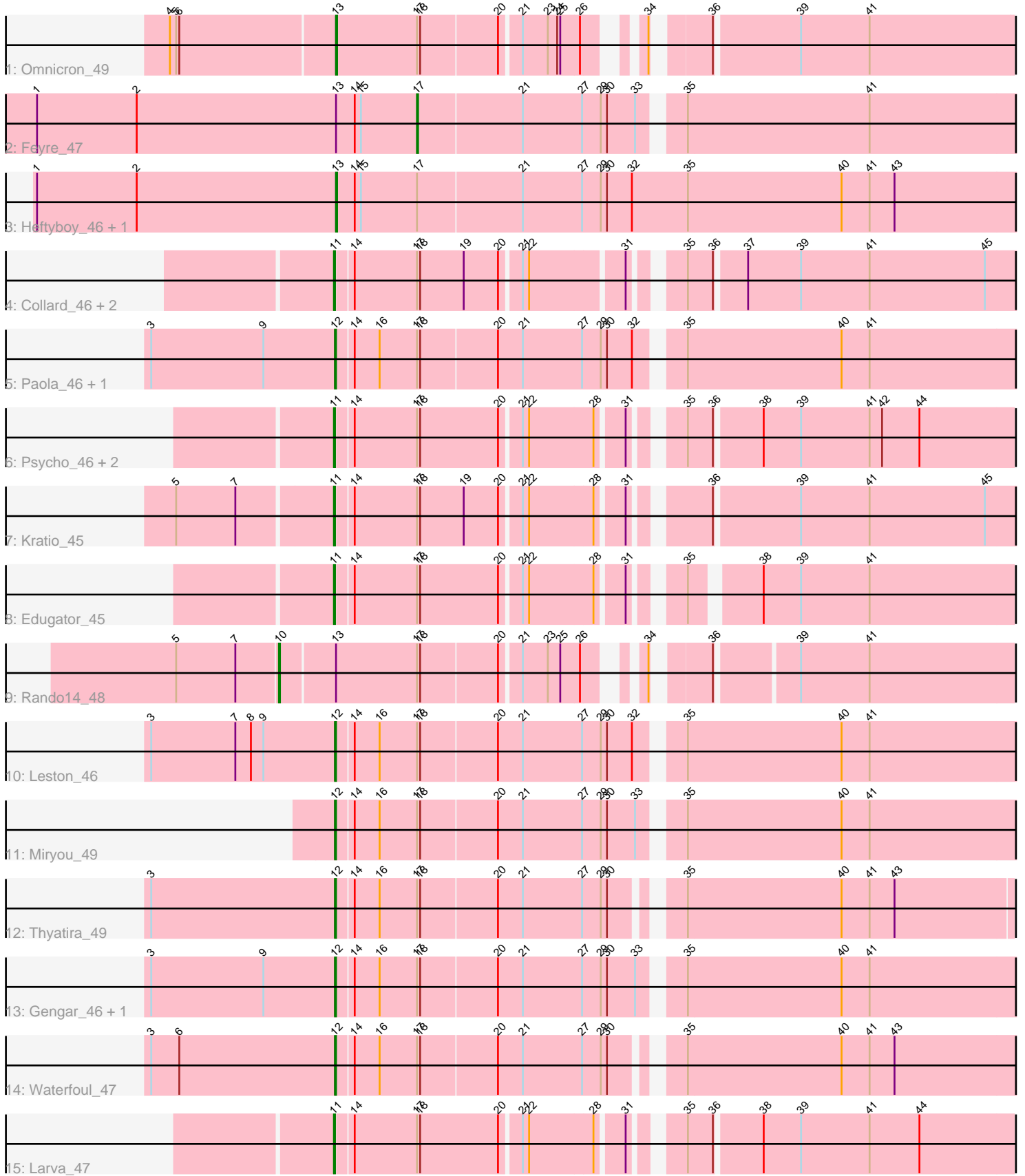


Pham 196819



Note: Tracks are now grouped by subcluster and scaled. Switching in subcluster is indicated by changes in track color. Track scale is now set by default to display the region 30 bp upstream of start 1 to 30 bp downstream of the last possible start. If this default region is judged to be packed too tightly with annotated starts, the track will be further scaled to only show that region of the ORF with annotated starts. This action will be indicated by adding "Zoomed" to the title. For starts, yellow indicates the location of called starts comprised solely of Glimmer/GeneMark auto-annotations, green indicates the location of called starts with at least 1 manual gene annotation.

Pham 196819 Report

This analysis was run 12/09/24 on database version 580.

Pham number 196819 has 22 members, 0 are drafts.

Phages represented in each track:

- Track 1 : Omnicron_49
- Track 2 : Feyre_47
- Track 3 : Heftyboy_46, SoSeph_46
- Track 4 : Collard_46, Agent47_48, InvictusManeo_46
- Track 5 : Paola_46, Guillsminger_47
- Track 6 : Psycho_46, AlleyCat_48, Dadosky_48
- Track 7 : Kratio_45
- Track 8 : Edugator_45
- Track 9 : Rando14_48
- Track 10 : Leston_46
- Track 11 : Miryou_49
- Track 12 : Thyatira_49
- Track 13 : Gengar_46, OkiRoe_46
- Track 14 : Waterfoul_47
- Track 15 : Larva_47

Summary of Final Annotations (See graph section above for start numbers):

The start number called the most often in the published annotations is 11, it was called in 9 of the 22 non-draft genes in the pham.

Genes that call this "Most Annotated" start:

- Agent47_48, AlleyCat_48, Collard_46, Dadosky_48, Edugator_45, InvictusManeo_46, Kratio_45, Larva_47, Psycho_46,

Genes that have the "Most Annotated" start but do not call it:

-

Genes that do not have the "Most Annotated" start:

- Feyre_47, Gengar_46, Guillsminger_47, Heftyboy_46, Leston_46, Miryou_49, OkiRoe_46, Omnicron_49, Paola_46, Rando14_48, SoSeph_46, Thyatira_49, Waterfoul_47,

Summary by start number:

Start 10:

- Found in 1 of 22 (4.5%) of genes in pham
- Manual Annotations of this start: 1 of 22
- Called 100.0% of time when present
- Phage (with cluster) where this start called: Rando14_48 (K5),

Start 11:

- Found in 9 of 22 (40.9%) of genes in pham
- Manual Annotations of this start: 9 of 22
- Called 100.0% of time when present
- Phage (with cluster) where this start called: Agent47_48 (K5), AlleyCat_48 (K5), Collard_46 (K5), Dadosky_48 (K5), Edugator_45 (K5), InvictusManeo_46 (K5), Kratio_45 (K5), Larva_47 (K5), Psycho_46 (K5),

Start 12:

- Found in 8 of 22 (36.4%) of genes in pham
- Manual Annotations of this start: 8 of 22
- Called 100.0% of time when present
- Phage (with cluster) where this start called: Gengar_46 (K5), Guillsminger_47 (K5), Leston_46 (K5), Miryou_49 (K5), OkiRoe_46 (K5), Paola_46 (K5), Thyatira_49 (K5), Waterfoul_47 (K5),

Start 13:

- Found in 5 of 22 (22.7%) of genes in pham
- Manual Annotations of this start: 3 of 22
- Called 60.0% of time when present
- Phage (with cluster) where this start called: Heftyboy_46 (K5), Omnicron_49 (K5), SoSeph_46 (K5),

Start 17:

- Found in 22 of 22 (100.0%) of genes in pham
- Manual Annotations of this start: 1 of 22
- Called 4.5% of time when present
- Phage (with cluster) where this start called: Feyre_47 (K5),

Summary by clusters:

There is one cluster represented in this pham: K5

Info for manual annotations of cluster K5:

- Start number 10 was manually annotated 1 time for cluster K5.
- Start number 11 was manually annotated 9 times for cluster K5.
- Start number 12 was manually annotated 8 times for cluster K5.
- Start number 13 was manually annotated 3 times for cluster K5.
- Start number 17 was manually annotated 1 time for cluster K5.

Gene Information:

Gene: Agent47_48 Start: 36423, Stop: 37028, Start Num: 11
Candidate Starts for Agent47_48:

(Start: 11 @36423 has 9 MA's), (14, 36438), (Start: 17 @36498 has 1 MA's), (18, 36501), (19, 36543), (20, 36576), (21, 36594), (22, 36600), (31, 36684), (35, 36720), (36, 36744), (37, 36771), (39, 36822), (41, 36888), (45, 36999),

Gene: AlleyCat_48 Start: 36277, Stop: 36879, Start Num: 11

Candidate Starts for AlleyCat_48:

(Start: 11 @36277 has 9 MA's), (14, 36292), (Start: 17 @36352 has 1 MA's), (18, 36355), (20, 36430), (21, 36448), (22, 36454), (28, 36514), (31, 36538), (35, 36574), (36, 36598), (38, 36640), (39, 36676), (41, 36742), (42, 36754), (44, 36790),

Gene: Collard_46 Start: 36384, Stop: 36989, Start Num: 11

Candidate Starts for Collard_46:

(Start: 11 @36384 has 9 MA's), (14, 36399), (Start: 17 @36459 has 1 MA's), (18, 36462), (19, 36504), (20, 36537), (21, 36555), (22, 36561), (31, 36645), (35, 36681), (36, 36705), (37, 36732), (39, 36783), (41, 36849), (45, 36960),

Gene: Dadosky_48 Start: 36279, Stop: 36881, Start Num: 11

Candidate Starts for Dadosky_48:

(Start: 11 @36279 has 9 MA's), (14, 36294), (Start: 17 @36354 has 1 MA's), (18, 36357), (20, 36432), (21, 36450), (22, 36456), (28, 36516), (31, 36540), (35, 36576), (36, 36600), (38, 36642), (39, 36678), (41, 36744), (42, 36756), (44, 36792),

Gene: Edugator_45 Start: 36704, Stop: 37297, Start Num: 11

Candidate Starts for Edugator_45:

(Start: 11 @36704 has 9 MA's), (14, 36719), (Start: 17 @36779 has 1 MA's), (18, 36782), (20, 36857), (21, 36875), (22, 36881), (28, 36941), (31, 36965), (35, 37001), (38, 37058), (39, 37094), (41, 37160),

Gene: Feyre_47 Start: 37611, Stop: 38171, Start Num: 17

Candidate Starts for Feyre_47:

(1, 37245), (2, 37341), (Start: 13 @37533 has 3 MA's), (14, 37551), (15, 37557), (Start: 17 @37611 has 1 MA's), (21, 37710), (27, 37767), (29, 37785), (30, 37791), (33, 37818), (35, 37851), (41, 38025),

Gene: Gengar_46 Start: 36147, Stop: 36782, Start Num: 12

Candidate Starts for Gengar_46:

(3, 35970), (9, 36078), (Start: 12 @36147 has 8 MA's), (14, 36162), (16, 36186), (Start: 17 @36222 has 1 MA's), (18, 36225), (20, 36297), (21, 36321), (27, 36378), (29, 36396), (30, 36402), (33, 36429), (35, 36462), (40, 36609), (41, 36636),

Gene: Guillsminger_47 Start: 36118, Stop: 36753, Start Num: 12

Candidate Starts for Guillsminger_47:

(3, 35941), (9, 36049), (Start: 12 @36118 has 8 MA's), (14, 36133), (16, 36157), (Start: 17 @36193 has 1 MA's), (18, 36196), (20, 36268), (21, 36292), (27, 36349), (29, 36367), (30, 36373), (32, 36397), (35, 36433), (40, 36580), (41, 36607),

Gene: Heftyboy_46 Start: 36269, Stop: 36925, Start Num: 13

Candidate Starts for Heftyboy_46:

(1, 35981), (2, 36077), (Start: 13 @36269 has 3 MA's), (14, 36287), (15, 36293), (Start: 17 @36347 has 1 MA's), (21, 36446), (27, 36503), (29, 36521), (30, 36527), (32, 36551), (35, 36605), (40, 36752), (41, 36779), (43, 36803),

Gene: InvictusManeo_46 Start: 36427, Stop: 37032, Start Num: 11

Candidate Starts for InvictusManeo_46:

(Start: 11 @36427 has 9 MA's), (14, 36442), (Start: 17 @36502 has 1 MA's), (18, 36505), (19, 36547), (20, 36580), (21, 36598), (22, 36604), (31, 36688), (35, 36724), (36, 36748), (37, 36775), (39, 36826), (41, 36892), (45, 37003),

Gene: Kratio_45 Start: 35977, Stop: 36582, Start Num: 11

Candidate Starts for Kratio_45:

(5, 35833), (7, 35890), (Start: 11 @35977 has 9 MA's), (14, 35992), (Start: 17 @36052 has 1 MA's), (18, 36055), (19, 36097), (20, 36130), (21, 36148), (22, 36154), (28, 36214), (31, 36238), (36, 36298), (39, 36376), (41, 36442), (45, 36553),

Gene: Larva_47 Start: 36146, Stop: 36748, Start Num: 11

Candidate Starts for Larva_47:

(Start: 11 @36146 has 9 MA's), (14, 36161), (Start: 17 @36221 has 1 MA's), (18, 36224), (20, 36299), (21, 36317), (22, 36323), (28, 36383), (31, 36407), (35, 36443), (36, 36467), (38, 36509), (39, 36545), (41, 36611), (44, 36659),

Gene: Leston_46 Start: 36247, Stop: 36882, Start Num: 12

Candidate Starts for Leston_46:

(3, 36070), (7, 36151), (8, 36166), (9, 36178), (Start: 12 @36247 has 8 MA's), (14, 36262), (16, 36286), (Start: 17 @36322 has 1 MA's), (18, 36325), (20, 36397), (21, 36421), (27, 36478), (29, 36496), (30, 36502), (32, 36526), (35, 36562), (40, 36709), (41, 36736),

Gene: Miryou_49 Start: 38449, Stop: 39084, Start Num: 12

Candidate Starts for Miryou_49:

(Start: 12 @38449 has 8 MA's), (14, 38464), (16, 38488), (Start: 17 @38524 has 1 MA's), (18, 38527), (20, 38599), (21, 38623), (27, 38680), (29, 38698), (30, 38704), (33, 38731), (35, 38764), (40, 38911), (41, 38938),

Gene: OkiRoe_46 Start: 36120, Stop: 36755, Start Num: 12

Candidate Starts for OkiRoe_46:

(3, 35943), (9, 36051), (Start: 12 @36120 has 8 MA's), (14, 36135), (16, 36159), (Start: 17 @36195 has 1 MA's), (18, 36198), (20, 36270), (21, 36294), (27, 36351), (29, 36369), (30, 36375), (33, 36402), (35, 36435), (40, 36582), (41, 36609),

Gene: Omnicron_49 Start: 35732, Stop: 36313, Start Num: 13

Candidate Starts for Omnicron_49:

(4, 35576), (5, 35582), (6, 35585), (Start: 13 @35732 has 3 MA's), (Start: 17 @35810 has 1 MA's), (18, 35813), (20, 35885), (21, 35903), (23, 35927), (24, 35936), (25, 35939), (26, 35957), (34, 35990), (36, 36032), (39, 36110), (41, 36176),

Gene: Paola_46 Start: 36118, Stop: 36753, Start Num: 12

Candidate Starts for Paola_46:

(3, 35941), (9, 36049), (Start: 12 @36118 has 8 MA's), (14, 36133), (16, 36157), (Start: 17 @36193 has 1 MA's), (18, 36196), (20, 36268), (21, 36292), (27, 36349), (29, 36367), (30, 36373), (32, 36397), (35, 36433), (40, 36580), (41, 36607),

Gene: Psycho_46 Start: 36276, Stop: 36878, Start Num: 11

Candidate Starts for Psycho_46:

(Start: 11 @36276 has 9 MA's), (14, 36291), (Start: 17 @36351 has 1 MA's), (18, 36354), (20, 36429), (21, 36447), (22, 36453), (28, 36513), (31, 36537), (35, 36573), (36, 36597), (38, 36639), (39, 36675), (41, 36741), (42, 36753), (44, 36789),

Gene: Rando14_48 Start: 35246, Stop: 35872, Start Num: 10

Candidate Starts for Rando14_48:

(5, 35150), (7, 35207), (Start: 10 @35246 has 1 MA's), (Start: 13 @35297 has 3 MA's), (Start: 17 @35375 has 1 MA's), (18, 35378), (20, 35450), (21, 35468), (23, 35492), (25, 35504), (26, 35522), (34, 35555), (36, 35597), (39, 35669), (41, 35735),

Gene: SoSeph_46 Start: 36269, Stop: 36925, Start Num: 13

Candidate Starts for SoSeph_46:

(1, 35981), (2, 36077), (Start: 13 @36269 has 3 MA's), (14, 36287), (15, 36293), (Start: 17 @36347 has 1 MA's), (21, 36446), (27, 36503), (29, 36521), (30, 36527), (32, 36551), (35, 36605), (40, 36752), (41, 36779), (43, 36803),

Gene: Thyatira_49 Start: 38470, Stop: 39090, Start Num: 12

Candidate Starts for Thyatira_49:

(3, 38293), (Start: 12 @38470 has 8 MA's), (14, 38485), (16, 38509), (Start: 17 @38545 has 1 MA's), (18, 38548), (20, 38620), (21, 38644), (27, 38701), (29, 38719), (30, 38725), (35, 38776), (40, 38923), (41, 38950), (43, 38974),

Gene: Waterfoul_47 Start: 36361, Stop: 36987, Start Num: 12

Candidate Starts for Waterfoul_47:

(3, 36184), (6, 36211), (Start: 12 @36361 has 8 MA's), (14, 36376), (16, 36400), (Start: 17 @36436 has 1 MA's), (18, 36439), (20, 36511), (21, 36535), (27, 36592), (29, 36610), (30, 36616), (35, 36667), (40, 36814), (41, 36841), (43, 36865),