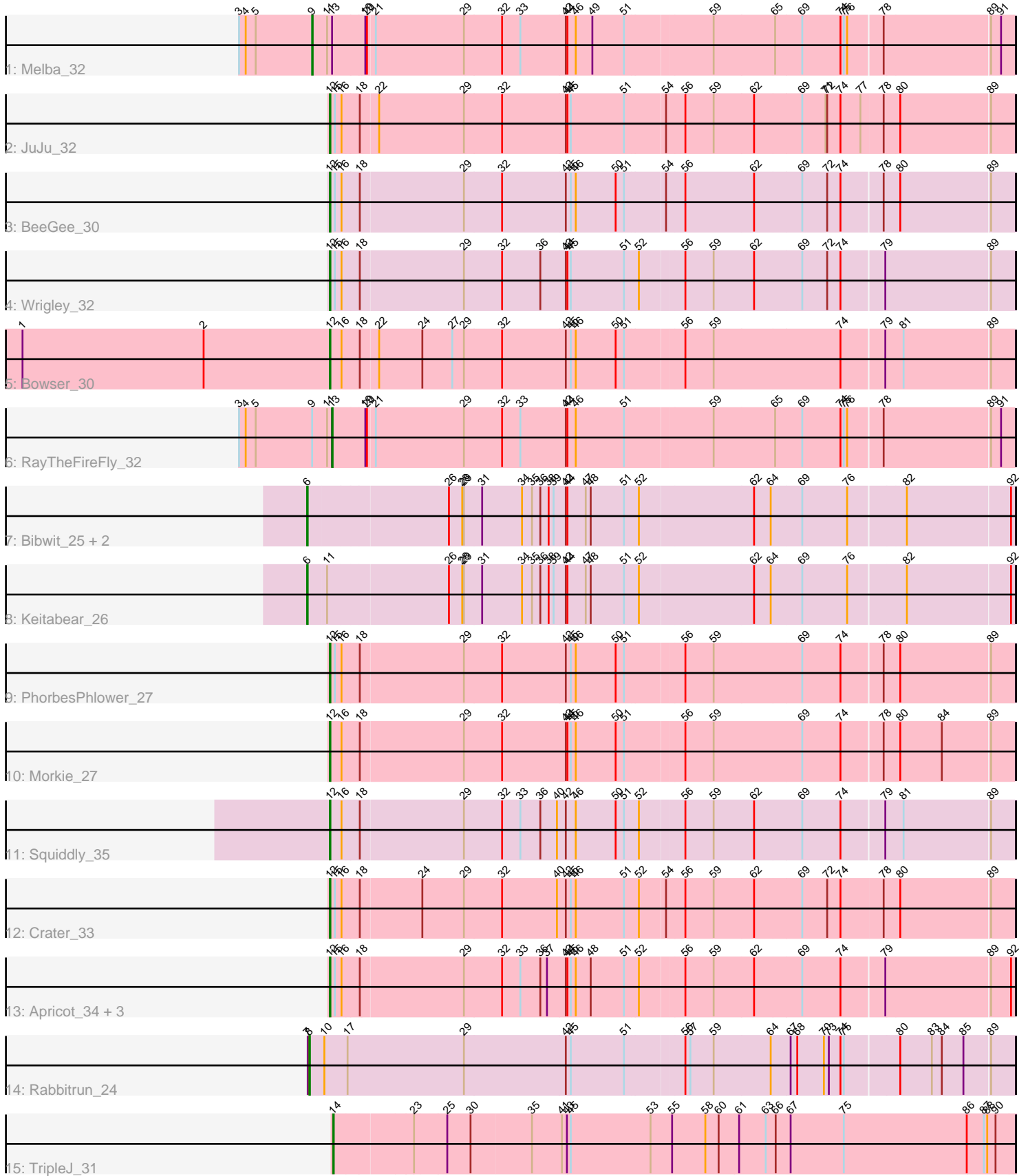


Pham 196856



Note: Tracks are now grouped by subcluster and scaled. Switching in subcluster is indicated by changes in track color. Track scale is now set by default to display the region 30 bp upstream of start 1 to 30 bp downstream of the last possible start. If this default region is judged to be packed too tightly with annotated starts, the track will be further scaled to only show that region of the ORF with annotated starts. This action will be indicated by adding "Zoomed" to the title. For starts, yellow indicates the location of called starts comprised solely of Glimmer/GeneMark auto-annotations, green indicates the location of called starts with at least 1 manual gene annotation.

Pham 196856 Report

This analysis was run 12/09/24 on database version 580.

Pham number 196856 has 20 members, 0 are drafts.

Phages represented in each track:

- Track 1 : Melba_32
- Track 2 : JuJu_32
- Track 3 : BeeGee_30
- Track 4 : Wrigley_32
- Track 5 : Bowser_30
- Track 6 : RayTheFireFly_32
- Track 7 : Bibwit_25, Sedona_26, Stultus_24
- Track 8 : Keitabear_26
- Track 9 : PhorbesPhlower_27
- Track 10 : Morkie_27
- Track 11 : Squiddly_35
- Track 12 : Crater_33
- Track 13 : Apricot_34, BearBQ_34, Lutum_35, Kenna_34
- Track 14 : Rabbitrun_24
- Track 15 : TripleJ_31

Summary of Final Annotations (See graph section above for start numbers):

The start number called the most often in the published annotations is 12, it was called in 12 of the 20 non-draft genes in the pham.

Genes that call this "Most Annotated" start:

- Apricot_34, BearBQ_34, BeeGee_30, Bowser_30, Crater_33, JuJu_32, Kenna_34, Lutum_35, Morkie_27, PhorbesPhlower_27, Squiddly_35, Wrigley_32,

Genes that have the "Most Annotated" start but do not call it:

-

Genes that do not have the "Most Annotated" start:

- Bibwit_25, Keitabear_26, Melba_32, Rabbitrun_24, RayTheFireFly_32, Sedona_26, Stultus_24, TripleJ_31,

Summary by start number:

Start 6:

- Found in 4 of 20 (20.0%) of genes in pham
- Manual Annotations of this start: 4 of 20
- Called 100.0% of time when present
- Phage (with cluster) where this start called: Bibwit_25 (DE1), Keitabear_26 (DE1), Sedona_26 (DE1), Stultus_24 (DE1),

Start 8:

- Found in 1 of 20 (5.0%) of genes in pham
- Manual Annotations of this start: 1 of 20
- Called 100.0% of time when present
- Phage (with cluster) where this start called: Rabbitrun_24 (DU2),

Start 9:

- Found in 2 of 20 (10.0%) of genes in pham
- Manual Annotations of this start: 1 of 20
- Called 50.0% of time when present
- Phage (with cluster) where this start called: Melba_32 (CV),

Start 12:

- Found in 12 of 20 (60.0%) of genes in pham
- Manual Annotations of this start: 12 of 20
- Called 100.0% of time when present
- Phage (with cluster) where this start called: Apricot_34 (DN3), BearBQ_34 (DN), BeeGee_30 (CY), Bowser_30 (DB), Crater_33 (DN3), JuJu_32 (CV), Kenna_34 (DN1), Lutum_35 (DN1), Morkie_27 (DH), PhorbesPhlower_27 (DH), Squiddly_35 (DN2), Wrigley_32 (CY),

Start 13:

- Found in 2 of 20 (10.0%) of genes in pham
- Manual Annotations of this start: 1 of 20
- Called 50.0% of time when present
- Phage (with cluster) where this start called: RayTheFireFly_32 (DB),

Start 14:

- Found in 1 of 20 (5.0%) of genes in pham
- Manual Annotations of this start: 1 of 20
- Called 100.0% of time when present
- Phage (with cluster) where this start called: TripleJ_31 (FJ),

Summary by clusters:

There are 11 clusters represented in this pham: DN, DH, DE1, DB, CV, CY, DN1, DN3, DN2, FJ, DU2,

Info for manual annotations of cluster CV:

- Start number 9 was manually annotated 1 time for cluster CV.
- Start number 12 was manually annotated 1 time for cluster CV.

Info for manual annotations of cluster CY:

- Start number 12 was manually annotated 2 times for cluster CY.

Info for manual annotations of cluster DB:

- Start number 12 was manually annotated 1 time for cluster DB.
- Start number 13 was manually annotated 1 time for cluster DB.

Info for manual annotations of cluster DE1:

- Start number 6 was manually annotated 4 times for cluster DE1.

Info for manual annotations of cluster DH:

- Start number 12 was manually annotated 2 times for cluster DH.

Info for manual annotations of cluster DN:

- Start number 12 was manually annotated 1 time for cluster DN.

Info for manual annotations of cluster DN1:

- Start number 12 was manually annotated 2 times for cluster DN1.

Info for manual annotations of cluster DN2:

- Start number 12 was manually annotated 1 time for cluster DN2.

Info for manual annotations of cluster DN3:

- Start number 12 was manually annotated 2 times for cluster DN3.

Info for manual annotations of cluster DU2:

- Start number 8 was manually annotated 1 time for cluster DU2.

Info for manual annotations of cluster FJ:

- Start number 14 was manually annotated 1 time for cluster FJ.

Gene Information:

Gene: Apricot_34 Start: 26509, Stop: 27699, Start Num: 12

Candidate Starts for Apricot_34:

(Start: 12 @26509 has 12 MA's), (15, 26518), (16, 26530), (18, 26557), (29, 26740), (32, 26806), (33, 26839), (36, 26875), (37, 26887), (42, 26920), (44, 26923), (45, 26929), (46, 26938), (48, 26965), (51, 27025), (52, 27049), (56, 27124), (59, 27175), (62, 27247), (69, 27331), (74, 27400), (79, 27475), (89, 27658), (92, 27694),

Gene: BearBQ_34 Start: 27736, Stop: 28926, Start Num: 12

Candidate Starts for BearBQ_34:

(Start: 12 @27736 has 12 MA's), (15, 27745), (16, 27757), (18, 27784), (29, 27967), (32, 28033), (33, 28066), (36, 28102), (37, 28114), (42, 28147), (44, 28150), (45, 28156), (46, 28165), (48, 28192), (51, 28252), (52, 28276), (56, 28351), (59, 28402), (62, 28474), (69, 28558), (74, 28627), (79, 28702), (89, 28885), (92, 28921),

Gene: BeeGee_30 Start: 25229, Stop: 26419, Start Num: 12

Candidate Starts for BeeGee_30:

(Start: 12 @25229 has 12 MA's), (15, 25238), (16, 25250), (18, 25277), (29, 25460), (32, 25526), (42, 25640), (45, 25649), (46, 25658), (50, 25730), (51, 25745), (54, 25814), (56, 25844), (62, 25967), (69, 26051), (72, 26096), (74, 26120), (78, 26192), (80, 26219), (89, 26378),

Gene: Bibwit_25 Start: 19805, Stop: 21040, Start Num: 6

Candidate Starts for Bibwit_25:

(Start: 6 @19805 has 4 MA's), (26, 20051), (28, 20075), (29, 20078), (31, 20108), (34, 20180), (35, 20198), (36, 20213), (38, 20228), (39, 20237), (42, 20258), (44, 20261), (47, 20294), (48, 20303), (51, 20363), (52, 20387), (62, 20588), (64, 20618), (69, 20672), (76, 20753), (82, 20852), (92, 21035),

Gene: Bowser_30 Start: 24790, Stop: 25980, Start Num: 12

Candidate Starts for Bowser_30:

(1, 24235), (2, 24562), (Start: 12 @24790 has 12 MA's), (16, 24811), (18, 24838), (22, 24868), (24, 24946), (27, 25000), (29, 25021), (32, 25087), (42, 25201), (45, 25210), (46, 25219), (50, 25291), (51, 25306), (56, 25405), (59, 25456), (74, 25681), (79, 25756), (81, 25786), (89, 25939),

Gene: Crater_33 Start: 26484, Stop: 27677, Start Num: 12

Candidate Starts for Crater_33:

(Start: 12 @26484 has 12 MA's), (15, 26493), (16, 26505), (18, 26532), (24, 26640), (29, 26715), (32, 26781), (40, 26880), (42, 26895), (45, 26904), (46, 26913), (51, 27000), (52, 27024), (54, 27069), (56, 27099), (59, 27150), (62, 27222), (69, 27306), (72, 27351), (74, 27375), (78, 27450), (80, 27477), (89, 27636),

Gene: JuJu_32 Start: 26098, Stop: 27291, Start Num: 12

Candidate Starts for JuJu_32:

(Start: 12 @26098 has 12 MA's), (15, 26107), (16, 26119), (18, 26146), (22, 26176), (29, 26329), (32, 26395), (42, 26509), (44, 26512), (45, 26518), (51, 26614), (54, 26683), (56, 26713), (59, 26764), (62, 26836), (69, 26920), (71, 26962), (72, 26965), (74, 26989), (77, 27025), (78, 27064), (80, 27091), (89, 27250),

Gene: Keitabear_26 Start: 21513, Stop: 22748, Start Num: 6

Candidate Starts for Keitabear_26:

(Start: 6 @21513 has 4 MA's), (11, 21546), (26, 21759), (28, 21783), (29, 21786), (31, 21816), (34, 21888), (35, 21906), (36, 21921), (38, 21936), (39, 21945), (42, 21966), (44, 21969), (47, 22002), (48, 22011), (51, 22071), (52, 22095), (62, 22296), (64, 22326), (69, 22380), (76, 22461), (82, 22560), (92, 22743),

Gene: Kenna_34 Start: 27113, Stop: 28303, Start Num: 12

Candidate Starts for Kenna_34:

(Start: 12 @27113 has 12 MA's), (15, 27122), (16, 27134), (18, 27161), (29, 27344), (32, 27410), (33, 27443), (36, 27479), (37, 27491), (42, 27524), (44, 27527), (45, 27533), (46, 27542), (48, 27569), (51, 27629), (52, 27653), (56, 27728), (59, 27779), (62, 27851), (69, 27935), (74, 28004), (79, 28079), (89, 28262), (92, 28298),

Gene: Lutum_35 Start: 27113, Stop: 28303, Start Num: 12

Candidate Starts for Lutum_35:

(Start: 12 @27113 has 12 MA's), (15, 27122), (16, 27134), (18, 27161), (29, 27344), (32, 27410), (33, 27443), (36, 27479), (37, 27491), (42, 27524), (44, 27527), (45, 27533), (46, 27542), (48, 27569), (51, 27629), (52, 27653), (56, 27728), (59, 27779), (62, 27851), (69, 27935), (74, 28004), (79, 28079), (89, 28262), (92, 28298),

Gene: Melba_32 Start: 26502, Stop: 27728, Start Num: 9

Candidate Starts for Melba_32:

(3, 26370), (4, 26382), (5, 26400), (Start: 9 @26502 has 1 MA's), (11, 26529), (Start: 13 @26538 has 1 MA's), (19, 26595), (20, 26598), (21, 26610), (29, 26769), (32, 26835), (33, 26868), (42, 26949), (44, 26952), (46, 26967), (49, 26997), (51, 27054), (59, 27204), (65, 27312), (69, 27360), (74, 27429), (75, 27435), (76, 27441), (78, 27501), (89, 27687), (91, 27705),

Gene: Morkie_27 Start: 22599, Stop: 23789, Start Num: 12

Candidate Starts for Morkie_27:

(Start: 12 @22599 has 12 MA's), (16, 22620), (18, 22647), (29, 22830), (32, 22896), (42, 23010), (44, 23013), (45, 23019), (46, 23028), (50, 23100), (51, 23115), (56, 23214), (59, 23265), (69, 23421), (74, 23490), (78, 23562), (80, 23589), (84, 23664), (89, 23748),

Gene: PhorbesPhlower_27 Start: 22599, Stop: 23789, Start Num: 12

Candidate Starts for PhorbesPhlower_27:

(Start: 12 @22599 has 12 MA's), (15, 22608), (16, 22620), (18, 22647), (29, 22830), (32, 22896), (42, 23010), (45, 23019), (46, 23028), (50, 23100), (51, 23115), (56, 23214), (59, 23265), (69, 23421), (74, 23490), (78, 23562), (80, 23589), (89, 23748),

Gene: Rabbitrun_24 Start: 13450, Stop: 14688, Start Num: 8

Candidate Starts for Rabbitrun_24:

(7, 13447), (Start: 8 @13450 has 1 MA's), (10, 13477), (17, 13519), (29, 13729), (42, 13909), (45, 13918), (51, 14014), (56, 14113), (57, 14122), (59, 14164), (64, 14266), (67, 14299), (68, 14311), (70, 14359), (73, 14368), (74, 14389), (75, 14395), (80, 14488), (83, 14545), (84, 14563), (85, 14602), (89, 14647),

Gene: RayTheFireFly_32 Start: 26526, Stop: 27716, Start Num: 13

Candidate Starts for RayTheFireFly_32:

(3, 26358), (4, 26370), (5, 26388), (Start: 9 @26490 has 1 MA's), (11, 26517), (Start: 13 @26526 has 1 MA's), (19, 26583), (20, 26586), (21, 26598), (29, 26757), (32, 26823), (33, 26856), (42, 26937), (44, 26940), (46, 26955), (51, 27042), (59, 27192), (65, 27300), (69, 27348), (74, 27417), (75, 27423), (76, 27429), (78, 27489), (89, 27675), (91, 27693),

Gene: Sedona_26 Start: 21245, Stop: 22480, Start Num: 6

Candidate Starts for Sedona_26:

(Start: 6 @21245 has 4 MA's), (26, 21491), (28, 21515), (29, 21518), (31, 21548), (34, 21620), (35, 21638), (36, 21653), (38, 21668), (39, 21677), (42, 21698), (44, 21701), (47, 21734), (48, 21743), (51, 21803), (52, 21827), (62, 22028), (64, 22058), (69, 22112), (76, 22193), (82, 22292), (92, 22475),

Gene: Squiddly_35 Start: 26868, Stop: 28058, Start Num: 12

Candidate Starts for Squiddly_35:

(Start: 12 @26868 has 12 MA's), (16, 26889), (18, 26916), (29, 27099), (32, 27165), (33, 27198), (36, 27234), (40, 27264), (42, 27279), (46, 27297), (50, 27369), (51, 27384), (52, 27408), (56, 27483), (59, 27534), (62, 27606), (69, 27690), (74, 27759), (79, 27834), (81, 27864), (89, 28017),

Gene: Stultus_24 Start: 19224, Stop: 20459, Start Num: 6

Candidate Starts for Stultus_24:

(Start: 6 @19224 has 4 MA's), (26, 19470), (28, 19494), (29, 19497), (31, 19527), (34, 19599), (35, 19617), (36, 19632), (38, 19647), (39, 19656), (42, 19677), (44, 19680), (47, 19713), (48, 19722), (51, 19782), (52, 19806), (62, 20007), (64, 20037), (69, 20091), (76, 20172), (82, 20271), (92, 20454),

Gene: TripleJ_31 Start: 23130, Stop: 24341, Start Num: 14

Candidate Starts for TripleJ_31:

(Start: 14 @23130 has 1 MA's), (23, 23265), (25, 23322), (30, 23364), (35, 23472), (41, 23526), (43, 23535), (45, 23541), (53, 23685), (55, 23724), (58, 23784), (60, 23808), (61, 23844), (63, 23892), (66, 23910), (67, 23937), (75, 24033), (86, 24255), (87, 24285), (88, 24291), (90, 24306),

Gene: Wrigley_32 Start: 26121, Stop: 27311, Start Num: 12

Candidate Starts for Wrigley_32:

(Start: 12 @26121 has 12 MA's), (15, 26130), (16, 26142), (18, 26169), (29, 26352), (32, 26418), (36, 26487), (42, 26532), (44, 26535), (45, 26541), (51, 26637), (52, 26661), (56, 26736), (59, 26787), (62,

26859), (69, 26943), (72, 26988), (74, 27012), (79, 27087), (89, 27270),