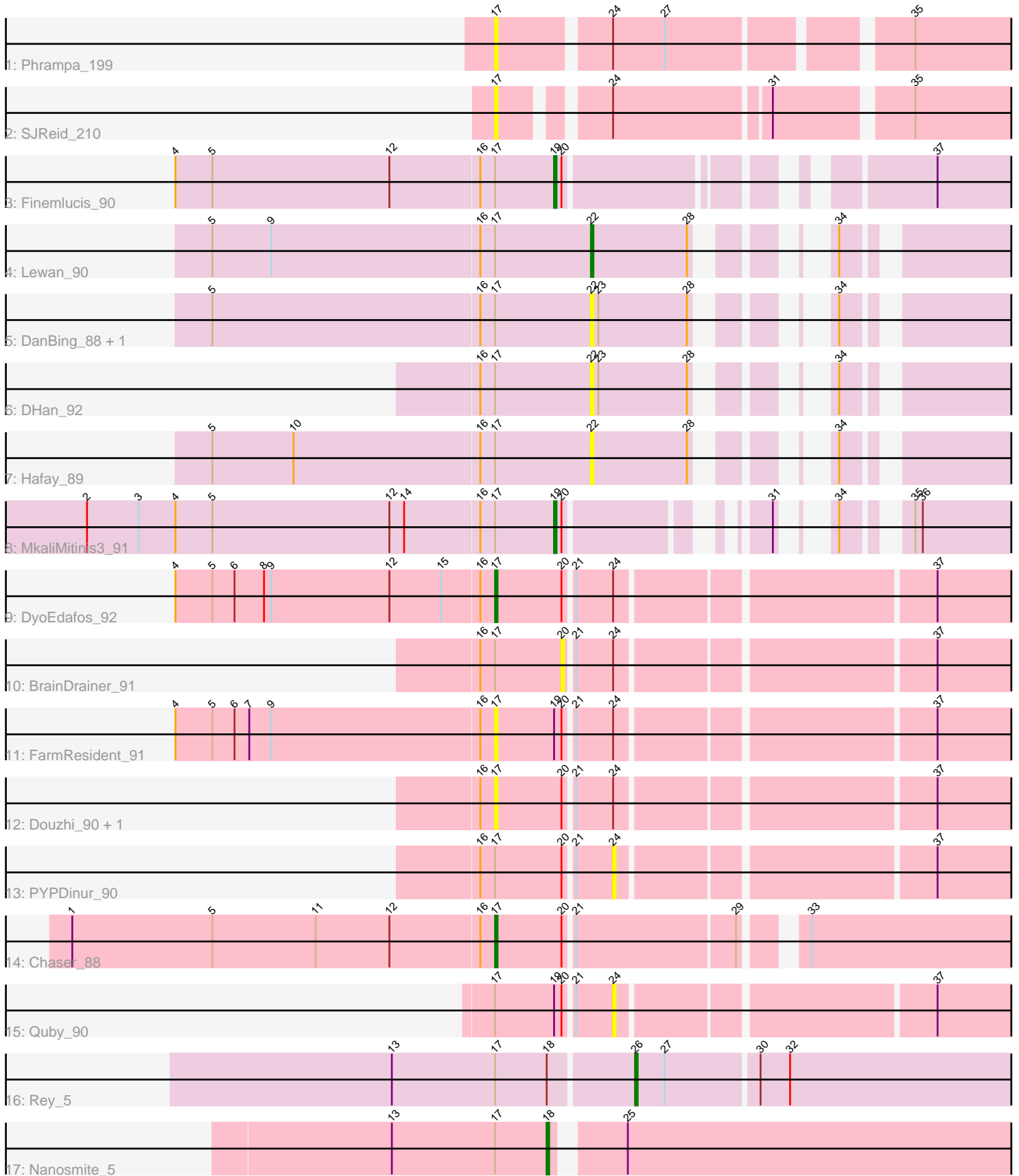


Pham 196864



Note: Tracks are now grouped by subcluster and scaled. Switching in subcluster is indicated by changes in track color. Track scale is now set by default to display the region 30 bp upstream of start 1 to 30 bp downstream of the last possible start. If this default region is judged to be packed too tightly with annotated starts, the track will be further scaled to only show that region of the ORF with annotated starts. This action will be indicated by adding "Zoomed" to the title. For starts, yellow indicates the location of called starts comprised solely of Glimmer/GeneMark auto-annotations, green indicates the location of called starts with at least 1 manual gene annotation.

Pham 196864 Report

This analysis was run 12/09/24 on database version 580.

Pham number 196864 has 19 members, 12 are drafts.

Phages represented in each track:

- Track 1 : Phrampa_199
- Track 2 : SJReid_210
- Track 3 : Finemlucis_90
- Track 4 : Lewan_90
- Track 5 : DanBing_88, Baoshan_86
- Track 6 : DHan_92
- Track 7 : Hafay_89
- Track 8 : MkaliMitinis3_91
- Track 9 : DyoEdafos_92
- Track 10 : BrainDrainer_91
- Track 11 : FarmResident_91
- Track 12 : Douzhi_90, Sheng711_91
- Track 13 : PYPDinur_90
- Track 14 : Chaser_88
- Track 15 : Quby_90
- Track 16 : Rey_5
- Track 17 : Nanosmite_5

Summary of Final Annotations (See graph section above for start numbers):

The start number called the most often in the published annotations is 19, it was called in 2 of the 7 non-draft genes in the pham.

Genes that call this "Most Annotated" start:

- Finemlucis_90, MkaliMitinis3_91,

Genes that have the "Most Annotated" start but do not call it:

- FarmResident_91, Quby_90,

Genes that do not have the "Most Annotated" start:

- Baoshan_86, BrainDrainer_91, Chaser_88, DHan_92, DanBing_88, Douzhi_90, DyoEdafos_92, Hafay_89, Lewan_90, Nanosmite_5, PYPDinur_90, Phrampa_199, Rey_5, SJReid_210, Sheng711_91,

Summary by start number:

Start 17:

- Found in 19 of 19 (100.0%) of genes in pham
- Manual Annotations of this start: 2 of 7
- Called 36.8% of time when present
- Phage (with cluster) where this start called: Chaser_88 (L4), Douzhi_90 (L4), DyoEdafos_92 (L4), FarmResident_91 (L4), Phrampa_199 (FC), SJReid_210 (FC), Sheng711_91 (L4),

Start 18:

- Found in 2 of 19 (10.5%) of genes in pham
- Manual Annotations of this start: 1 of 7
- Called 50.0% of time when present
- Phage (with cluster) where this start called: Nanosmite_5 (M3),

Start 19:

- Found in 4 of 19 (21.1%) of genes in pham
- Manual Annotations of this start: 2 of 7
- Called 50.0% of time when present
- Phage (with cluster) where this start called: Finemlucis_90 (L2), MkaliMitinis3_91 (L2),

Start 20:

- Found in 10 of 19 (52.6%) of genes in pham
- No Manual Annotations of this start.
- Called 10.0% of time when present
- Phage (with cluster) where this start called: BrainDrainer_91 (L4),

Start 22:

- Found in 5 of 19 (26.3%) of genes in pham
- Manual Annotations of this start: 1 of 7
- Called 100.0% of time when present
- Phage (with cluster) where this start called: Baoshan_86 (L2), DHan_92 (L2), DanBing_88 (L2), Hafay_89 (L2), Lewan_90 (L2),

Start 24:

- Found in 9 of 19 (47.4%) of genes in pham
- No Manual Annotations of this start.
- Called 22.2% of time when present
- Phage (with cluster) where this start called: PYPDinur_90 (L4), Quby_90 (L4),

Start 26:

- Found in 1 of 19 (5.3%) of genes in pham
- Manual Annotations of this start: 1 of 7
- Called 100.0% of time when present
- Phage (with cluster) where this start called: Rey_5 (M2),

Summary by clusters:

There are 5 clusters represented in this pham: L4, FC, L2, M3, M2,

Info for manual annotations of cluster L2:

- Start number 19 was manually annotated 2 times for cluster L2.
- Start number 22 was manually annotated 1 time for cluster L2.

Info for manual annotations of cluster L4:

- Start number 17 was manually annotated 2 times for cluster L4.

Info for manual annotations of cluster M2:

- Start number 26 was manually annotated 1 time for cluster M2.

Info for manual annotations of cluster M3:

- Start number 18 was manually annotated 1 time for cluster M3.

Gene Information:

Gene: Baoshan_86 Start: 57756, Stop: 57896, Start Num: 22

Candidate Starts for Baoshan_86:

(5, 57603), (16, 57711), (Start: 17 @57717 has 2 MA's), (Start: 22 @57756 has 1 MA's), (23, 57759), (28, 57795), (34, 57822),

Gene: BrainDrainer_91 Start: 57339, Stop: 57524, Start Num: 20

Candidate Starts for BrainDrainer_91:

(16, 57306), (Start: 17 @57312 has 2 MA's), (20, 57339), (21, 57342), (24, 57357), (37, 57477),

Gene: Chaser_88 Start: 56443, Stop: 56652, Start Num: 17

Candidate Starts for Chaser_88:

(1, 56272), (5, 56329), (11, 56371), (12, 56401), (16, 56437), (Start: 17 @56443 has 2 MA's), (20, 56470), (21, 56473), (29, 56536), (33, 56554),

Gene: DHan_92 Start: 57819, Stop: 57959, Start Num: 22

Candidate Starts for DHan_92:

(16, 57774), (Start: 17 @57780 has 2 MA's), (Start: 22 @57819 has 1 MA's), (23, 57822), (28, 57858), (34, 57885),

Gene: DanBing_88 Start: 57317, Stop: 57457, Start Num: 22

Candidate Starts for DanBing_88:

(5, 57164), (16, 57272), (Start: 17 @57278 has 2 MA's), (Start: 22 @57317 has 1 MA's), (23, 57320), (28, 57356), (34, 57383),

Gene: Douzhi_90 Start: 57001, Stop: 57213, Start Num: 17

Candidate Starts for Douzhi_90:

(16, 56995), (Start: 17 @57001 has 2 MA's), (20, 57028), (21, 57031), (24, 57046), (37, 57166),

Gene: DyoEdafos_92 Start: 57153, Stop: 57365, Start Num: 17

Candidate Starts for DyoEdafos_92:

(4, 57024), (5, 57039), (6, 57048), (8, 57060), (9, 57063), (12, 57111), (15, 57132), (16, 57147), (Start: 17 @57153 has 2 MA's), (20, 57180), (21, 57183), (24, 57198), (37, 57318),

Gene: FarmResident_91 Start: 56713, Stop: 56925, Start Num: 17

Candidate Starts for FarmResident_91:

(4, 56584), (5, 56599), (6, 56608), (7, 56614), (9, 56623), (16, 56707), (Start: 17 @56713 has 2 MA's), (Start: 19 @56737 has 2 MA's), (20, 56740), (21, 56743), (24, 56758), (37, 56878),

Gene: Finemlucis_90 Start: 58613, Stop: 58783, Start Num: 19

Candidate Starts for Finemlucis_90:

(4, 58460), (5, 58475), (12, 58547), (16, 58583), (Start: 17 @58589 has 2 MA's), (Start: 19 @58613 has 2 MA's), (20, 58616), (37, 58736),

Gene: Hafay_89 Start: 57435, Stop: 57575, Start Num: 22

Candidate Starts for Hafay_89:

(5, 57282), (10, 57315), (16, 57390), (Start: 17 @57396 has 2 MA's), (Start: 22 @57435 has 1 MA's), (28, 57474), (34, 57501),

Gene: Lewan_90 Start: 57483, Stop: 57623, Start Num: 22

Candidate Starts for Lewan_90:

(5, 57330), (9, 57354), (16, 57438), (Start: 17 @57444 has 2 MA's), (Start: 22 @57483 has 1 MA's), (28, 57522), (34, 57549),

Gene: MkaliMitinis3_91 Start: 57639, Stop: 57782, Start Num: 19

Candidate Starts for MkaliMitinis3_91:

(2, 57450), (3, 57471), (4, 57486), (5, 57501), (12, 57573), (14, 57579), (16, 57609), (Start: 17 @57615 has 2 MA's), (Start: 19 @57639 has 2 MA's), (20, 57642), (31, 57702), (34, 57708), (35, 57726), (36, 57729),

Gene: Nanosmite_5 Start: 2451, Stop: 2248, Start Num: 18

Candidate Starts for Nanosmite_5:

(13, 2514), (Start: 17 @2472 has 2 MA's), (Start: 18 @2451 has 1 MA's), (25, 2427),

Gene: PYPDinur_90 Start: 57609, Stop: 57776, Start Num: 24

Candidate Starts for PYPDinur_90:

(16, 57558), (Start: 17 @57564 has 2 MA's), (20, 57591), (21, 57594), (24, 57609), (37, 57729),

Gene: Phrampa_199 Start: 141698, Stop: 141910, Start Num: 17

Candidate Starts for Phrampa_199:

(Start: 17 @141698 has 2 MA's), (24, 141740), (27, 141761), (35, 141848),

Gene: Quby_90 Start: 56844, Stop: 57011, Start Num: 24

Candidate Starts for Quby_90:

(Start: 17 @56799 has 2 MA's), (Start: 19 @56823 has 2 MA's), (20, 56826), (21, 56829), (24, 56844), (37, 56964),

Gene: Rey_5 Start: 2370, Stop: 2203, Start Num: 26

Candidate Starts for Rey_5:

(13, 2466), (Start: 17 @2424 has 2 MA's), (Start: 18 @2403 has 1 MA's), (Start: 26 @2370 has 1 MA's), (27, 2358), (30, 2322), (32, 2310),

Gene: SJReid_210 Start: 135453, Stop: 135656, Start Num: 17

Candidate Starts for SJReid_210:

(Start: 17 @135453 has 2 MA's), (24, 135489), (31, 135549), (35, 135600),

Gene: Sheng711_91 Start: 57040, Stop: 57252, Start Num: 17

Candidate Starts for Sheng711_91:

(16, 57034), (Start: 17 @57040 has 2 MA's), (20, 57067), (21, 57070), (24, 57085), (37, 57205),

