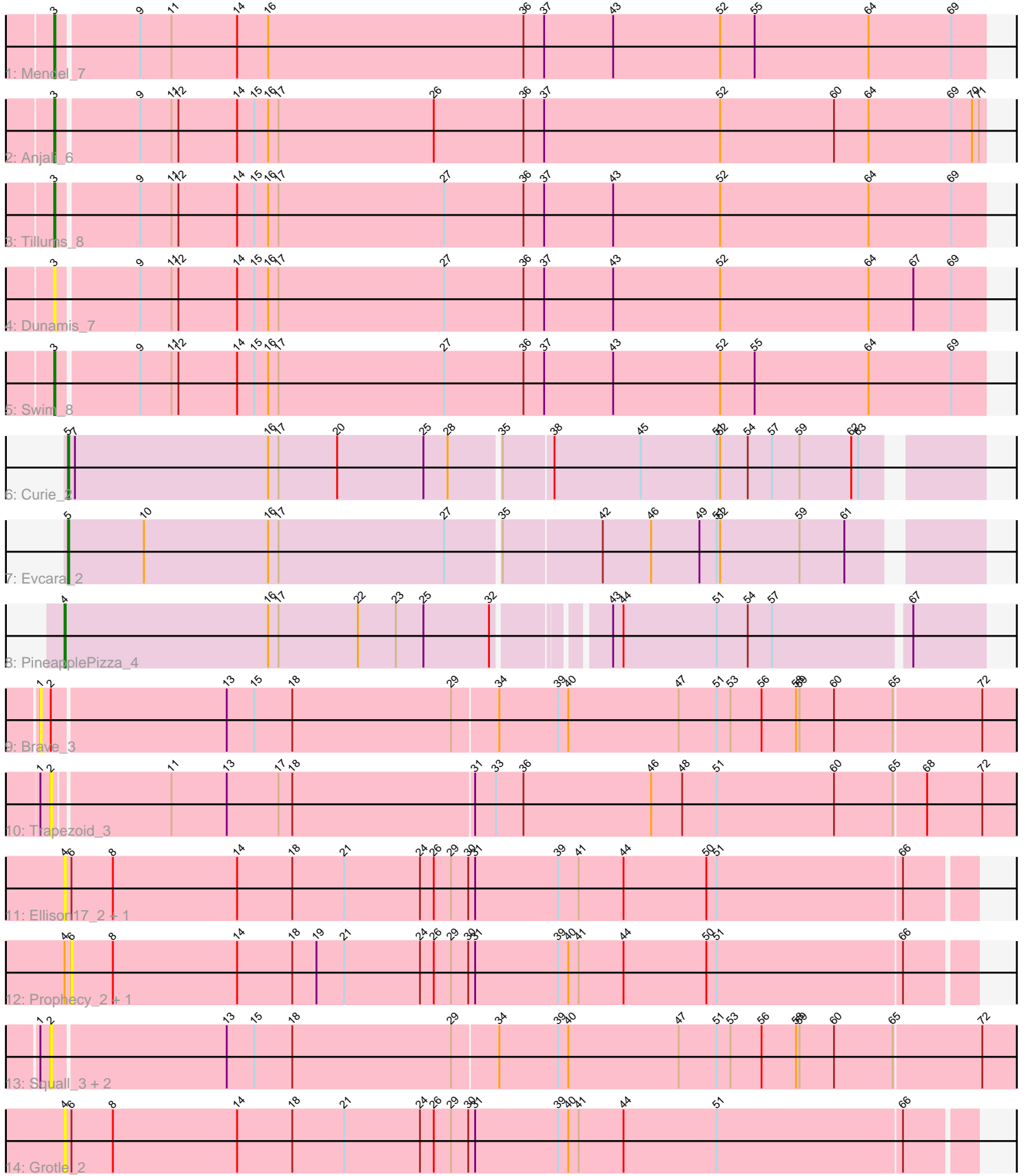


Pham 196882



Note: Tracks are now grouped by subcluster and scaled. Switching in subcluster is indicated by changes in track color. Track scale is now set by default to display the region 30 bp upstream of start 1 to 30 bp downstream of the last possible start. If this default region is judged to be packed too tightly with annotated starts, the track will be further scaled to only show that region of the ORF with annotated starts. This action will be indicated by adding "Zoomed" to the title. For starts, yellow indicates the location of called starts comprised solely of Glimmer/GeneMark auto-annotations, green indicates the location of called starts with at least 1 manual gene annotation.

## Pham 196882 Report

This analysis was run 12/09/24 on database version 580.

Pham number 196882 has 18 members, 11 are drafts.

Phages represented in each track:

- Track 1 : Mendel\_7
- Track 2 : Anjali\_6
- Track 3 : Tillums\_8
- Track 4 : Dunamis\_7
- Track 5 : Swim\_8
- Track 6 : Curie\_2
- Track 7 : Evcara\_2
- Track 8 : PineapplePizza\_4
- Track 9 : Brave\_3
- Track 10 : Trapezoid\_3
- Track 11 : Ellison17\_2, Momos\_2
- Track 12 : Prophecy\_2, Mimi16\_2
- Track 13 : Squall\_3, Penne\_3, Fairywren\_4
- Track 14 : Grotle\_2

### ***Summary of Final Annotations (See graph section above for start numbers):***

The start number called the most often in the published annotations is 3, it was called in 4 of the 7 non-draft genes in the pham.

Genes that call this "Most Annotated" start:

- Anjali\_6, Dunamis\_7, Mendel\_7, Swim\_8, Tillums\_8,

Genes that have the "Most Annotated" start but do not call it:

- 

Genes that do not have the "Most Annotated" start:

- Brave\_3, Curie\_2, Ellison17\_2, Evcara\_2, Fairywren\_4, Grotle\_2, Mimi16\_2, Momos\_2, Penne\_3, PineapplePizza\_4, Prophecy\_2, Squall\_3, Trapezoid\_3,

### **Summary by start number:**

Start 1:

- Found in 5 of 18 ( 27.8% ) of genes in pham

- No Manual Annotations of this start.
- Called 20.0% of time when present
- Phage (with cluster) where this start called: Brave\_3 (JB),

#### Start 2:

- Found in 5 of 18 ( 27.8% ) of genes in pham
- No Manual Annotations of this start.
- Called 80.0% of time when present
- Phage (with cluster) where this start called: Fairywren\_4 (JB), Penne\_3 (JB), Squall\_3 (JB), Trapezoid\_3 (JB),

#### Start 3:

- Found in 5 of 18 ( 27.8% ) of genes in pham
- Manual Annotations of this start: 4 of 7
- Called 100.0% of time when present
- Phage (with cluster) where this start called: Anjali\_6 (FD), Dunamis\_7 (FD), Mendel\_7 (FD), Swim\_8 (FD), Tillums\_8 (FD),

#### Start 4:

- Found in 6 of 18 ( 33.3% ) of genes in pham
- Manual Annotations of this start: 1 of 7
- Called 66.7% of time when present
- Phage (with cluster) where this start called: Ellison17\_2 (JB), Grotle\_2 (JB), Momos\_2 (JB), PineapplePizza\_4 (GI),

#### Start 5:

- Found in 2 of 18 ( 11.1% ) of genes in pham
- Manual Annotations of this start: 2 of 7
- Called 100.0% of time when present
- Phage (with cluster) where this start called: Curie\_2 (GI), Evcara\_2 (GI),

#### Start 6:

- Found in 5 of 18 ( 27.8% ) of genes in pham
- No Manual Annotations of this start.
- Called 40.0% of time when present
- Phage (with cluster) where this start called: Mimi16\_2 (JB), Prophecy\_2 (JB),

### **Summary by clusters:**

There are 3 clusters represented in this pham: FD, JB, GI,

Info for manual annotations of cluster FD:

- Start number 3 was manually annotated 4 times for cluster FD.

Info for manual annotations of cluster GI:

- Start number 4 was manually annotated 1 time for cluster GI.
- Start number 5 was manually annotated 2 times for cluster GI.

### **Gene Information:**

Gene: Anjali\_6 Start: 2043, Stop: 2846, Start Num: 3

Candidate Starts for Anjali\_6:

(Start: 3 @2043 has 4 MA's), (9, 2112), (11, 2139), (12, 2145), (14, 2196), (15, 2211), (16, 2223), (17, 2232), (26, 2367), (36, 2445), (37, 2463), (52, 2616), (60, 2715), (64, 2745), (69, 2817), (70, 2835), (71, 2841),

Gene: Brave\_3 Start: 1206, Stop: 2057, Start Num: 1

Candidate Starts for Brave\_3:

(1, 1206), (2, 1215), (13, 1362), (15, 1386), (18, 1419), (29, 1557), (34, 1596), (39, 1647), (40, 1656), (47, 1752), (51, 1785), (53, 1797), (56, 1824), (58, 1854), (59, 1857), (60, 1887), (65, 1938), (72, 2013),

Gene: Curie\_2 Start: 1039, Stop: 1806, Start Num: 5

Candidate Starts for Curie\_2:

(Start: 5 @1039 has 2 MA's), (7, 1045), (16, 1213), (17, 1222), (20, 1273), (25, 1348), (28, 1369), (35, 1411), (38, 1453), (45, 1528), (51, 1594), (52, 1597), (54, 1621), (57, 1642), (59, 1666), (62, 1711), (63, 1717),

Gene: Dunamis\_7 Start: 2057, Stop: 2860, Start Num: 3

Candidate Starts for Dunamis\_7:

(Start: 3 @2057 has 4 MA's), (9, 2126), (11, 2153), (12, 2159), (14, 2210), (15, 2225), (16, 2237), (17, 2246), (27, 2390), (36, 2459), (37, 2477), (43, 2537), (52, 2630), (64, 2759), (67, 2798), (69, 2831),

Gene: Ellison17\_2 Start: 1121, Stop: 1906, Start Num: 4

Candidate Starts for Ellison17\_2:

(Start: 4 @1121 has 1 MA's), (6, 1127), (8, 1163), (14, 1271), (18, 1319), (21, 1364), (24, 1430), (26, 1442), (29, 1457), (30, 1472), (31, 1478), (39, 1550), (41, 1568), (44, 1607), (50, 1679), (51, 1688), (66, 1847),

Gene: Evcara\_2 Start: 1028, Stop: 1795, Start Num: 5

Candidate Starts for Evcara\_2:

(Start: 5 @1028 has 2 MA's), (10, 1094), (16, 1202), (17, 1211), (27, 1355), (35, 1400), (42, 1484), (46, 1526), (49, 1568), (51, 1583), (52, 1586), (59, 1655), (61, 1694),

Gene: Fairywren\_4 Start: 1184, Stop: 2026, Start Num: 2

Candidate Starts for Fairywren\_4:

(1, 1175), (2, 1184), (13, 1331), (15, 1355), (18, 1388), (29, 1526), (34, 1565), (39, 1616), (40, 1625), (47, 1721), (51, 1754), (53, 1766), (56, 1793), (58, 1823), (59, 1826), (60, 1856), (65, 1907), (72, 1982),

Gene: Grotle\_2 Start: 1080, Stop: 1865, Start Num: 4

Candidate Starts for Grotle\_2:

(Start: 4 @1080 has 1 MA's), (6, 1086), (8, 1122), (14, 1230), (18, 1278), (21, 1323), (24, 1389), (26, 1401), (29, 1416), (30, 1431), (31, 1437), (39, 1509), (40, 1518), (41, 1527), (44, 1566), (51, 1647), (66, 1806),

Gene: Mendel\_7 Start: 1964, Stop: 2767, Start Num: 3

Candidate Starts for Mendel\_7:

(Start: 3 @1964 has 4 MA's), (9, 2033), (11, 2060), (14, 2117), (16, 2144), (36, 2366), (37, 2384), (43, 2444), (52, 2537), (55, 2567), (64, 2666), (69, 2738),

Gene: Mimi16\_2 Start: 1137, Stop: 1916, Start Num: 6

Candidate Starts for Mimi16\_2:

(Start: 4 @1131 has 1 MA's), (6, 1137), (8, 1173), (14, 1281), (18, 1329), (19, 1350), (21, 1374), (24, 1440), (26, 1452), (29, 1467), (30, 1482), (31, 1488), (39, 1560), (40, 1569), (41, 1578), (44, 1617), (50, 1689), (51, 1698), (66, 1857),

Gene: Momos\_2 Start: 1121, Stop: 1906, Start Num: 4

Candidate Starts for Momos\_2:

(Start: 4 @1121 has 1 MA's), (6, 1127), (8, 1163), (14, 1271), (18, 1319), (21, 1364), (24, 1430), (26, 1442), (29, 1457), (30, 1472), (31, 1478), (39, 1550), (41, 1568), (44, 1607), (50, 1679), (51, 1688), (66, 1847),

Gene: Penne\_3 Start: 1218, Stop: 2060, Start Num: 2

Candidate Starts for Penne\_3:

(1, 1209), (2, 1218), (13, 1365), (15, 1389), (18, 1422), (29, 1560), (34, 1599), (39, 1650), (40, 1659), (47, 1755), (51, 1788), (53, 1800), (56, 1827), (58, 1857), (59, 1860), (60, 1890), (65, 1941), (72, 2016),

Gene: PineapplePizza\_4 Start: 1788, Stop: 2555, Start Num: 4

Candidate Starts for PineapplePizza\_4:

(Start: 4 @1788 has 1 MA's), (16, 1965), (17, 1974), (22, 2043), (23, 2076), (25, 2100), (32, 2157), (43, 2241), (44, 2250), (51, 2331), (54, 2358), (57, 2379), (67, 2493),

Gene: Prophecy\_2 Start: 1137, Stop: 1916, Start Num: 6

Candidate Starts for Prophecy\_2:

(Start: 4 @1131 has 1 MA's), (6, 1137), (8, 1173), (14, 1281), (18, 1329), (19, 1350), (21, 1374), (24, 1440), (26, 1452), (29, 1467), (30, 1482), (31, 1488), (39, 1560), (40, 1569), (41, 1578), (44, 1617), (50, 1689), (51, 1698), (66, 1857),

Gene: Squall\_3 Start: 1185, Stop: 2027, Start Num: 2

Candidate Starts for Squall\_3:

(1, 1176), (2, 1185), (13, 1332), (15, 1356), (18, 1389), (29, 1527), (34, 1566), (39, 1617), (40, 1626), (47, 1722), (51, 1755), (53, 1767), (56, 1794), (58, 1824), (59, 1827), (60, 1857), (65, 1908), (72, 1983),

Gene: Swim\_8 Start: 2439, Stop: 3242, Start Num: 3

Candidate Starts for Swim\_8:

(Start: 3 @2439 has 4 MA's), (9, 2508), (11, 2535), (12, 2541), (14, 2592), (15, 2607), (16, 2619), (17, 2628), (27, 2772), (36, 2841), (37, 2859), (43, 2919), (52, 3012), (55, 3042), (64, 3141), (69, 3213),

Gene: Tillums\_8 Start: 2501, Stop: 3304, Start Num: 3

Candidate Starts for Tillums\_8:

(Start: 3 @2501 has 4 MA's), (9, 2570), (11, 2597), (12, 2603), (14, 2654), (15, 2669), (16, 2681), (17, 2690), (27, 2834), (36, 2903), (37, 2921), (43, 2981), (52, 3074), (64, 3203), (69, 3275),

Gene: Trapezoid\_3 Start: 1116, Stop: 1955, Start Num: 2

Candidate Starts for Trapezoid\_3:

(1, 1110), (2, 1116), (11, 1212), (13, 1260), (17, 1305), (18, 1317), (31, 1473), (33, 1491), (36, 1515), (46, 1626), (48, 1653), (51, 1683), (60, 1785), (65, 1836), (68, 1863), (72, 1911),