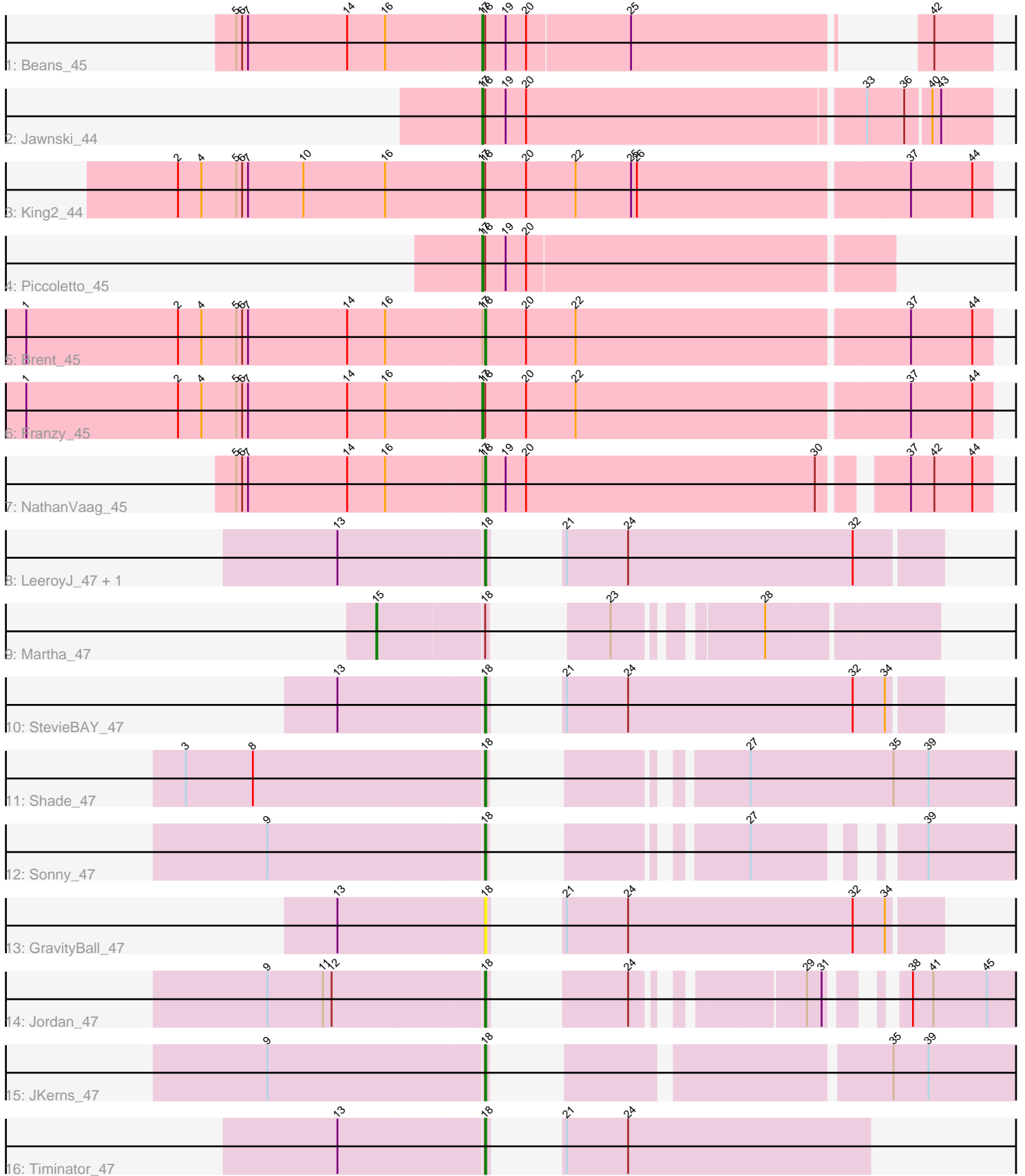


Pham 196904



Note: Tracks are now grouped by subcluster and scaled. Switching in subcluster is indicated by changes in track color. Track scale is now set by default to display the region 30 bp upstream of start 1 to 30 bp downstream of the last possible start. If this default region is judged to be packed too tightly with annotated starts, the track will be further scaled to only show that region of the ORF with annotated starts. This action will be indicated by adding "Zoomed" to the title. For starts, yellow indicates the location of called starts comprised solely of Glimmer/GeneMark auto-annotations, green indicates the location of called starts with at least 1 manual gene annotation.

Pham 196904 Report

This analysis was run 12/09/24 on database version 580.

Pham number 196904 has 17 members, 1 are drafts.

Phages represented in each track:

- Track 1 : Beans_45
- Track 2 : Jawnski_44
- Track 3 : King2_44
- Track 4 : Piccoletto_45
- Track 5 : Brent_45
- Track 6 : Franzy_45
- Track 7 : NathanVaag_45
- Track 8 : LeeroyJ_47, BarretLemon_47
- Track 9 : Martha_47
- Track 10 : StevieBAY_47
- Track 11 : Shade_47
- Track 12 : Sonny_47
- Track 13 : GravityBall_47
- Track 14 : Jordan_47
- Track 15 : JKerns_47
- Track 16 : Timinator_47

Summary of Final Annotations (See graph section above for start numbers):

The start number called the most often in the published annotations is 18, it was called in 10 of the 16 non-draft genes in the pham.

Genes that call this "Most Annotated" start:

- BarretLemon_47, Brent_45, GravityBall_47, JKerns_47, Jordan_47, LeeroyJ_47, NathanVaag_45, Shade_47, Sonny_47, StevieBAY_47, Timinator_47,

Genes that have the "Most Annotated" start but do not call it:

- Beans_45, Franzy_45, Jawnski_44, King2_44, Martha_47, Piccoletto_45,

Genes that do not have the "Most Annotated" start:

-

Summary by start number:

Start 15:

- Found in 1 of 17 (5.9%) of genes in pham
- Manual Annotations of this start: 1 of 16
- Called 100.0% of time when present
- Phage (with cluster) where this start called: Martha_47 (AO2),

Start 17:

- Found in 7 of 17 (41.2%) of genes in pham
- Manual Annotations of this start: 5 of 16
- Called 71.4% of time when present
- Phage (with cluster) where this start called: Beans_45 (AO1), Franzy_45 (AO1), Jawnski_44 (AO1), King2_44 (AO1), Piccoletto_45 (AO1),

Start 18:

- Found in 17 of 17 (100.0%) of genes in pham
- Manual Annotations of this start: 10 of 16
- Called 64.7% of time when present
- Phage (with cluster) where this start called: BarretLemon_47 (AO2), Brent_45 (AO1), GravityBall_47 (AO2), JKerns_47 (AO2), Jordan_47 (AO2), LeeroyJ_47 (AO2), NathanVaag_45 (AO1), Shade_47 (AO2), Sonny_47 (AO2), StevieBAY_47 (AO2), Timinator_47 (AO2),

Summary by clusters:

There are 2 clusters represented in this pham: AO2, AO1,

Info for manual annotations of cluster AO1:

- Start number 17 was manually annotated 5 times for cluster AO1.
- Start number 18 was manually annotated 2 times for cluster AO1.

Info for manual annotations of cluster AO2:

- Start number 15 was manually annotated 1 time for cluster AO2.
- Start number 18 was manually annotated 8 times for cluster AO2.

Gene Information:

Gene: BarretLemon_47 Start: 36189, Stop: 36578, Start Num: 18

Candidate Starts for BarretLemon_47:

(13, 36045), (Start: 18 @36189 has 10 MA's), (21, 36198), (24, 36261), (32, 36492),

Gene: Beans_45 Start: 35986, Stop: 36414, Start Num: 17

Candidate Starts for Beans_45:

(5, 35737), (6, 35743), (7, 35749), (14, 35851), (16, 35890), (Start: 17 @35986 has 5 MA's), (Start: 18 @35989 has 10 MA's), (19, 36010), (20, 36031), (25, 36136), (42, 36355),

Gene: Brent_45 Start: 36162, Stop: 36671, Start Num: 18

Candidate Starts for Brent_45:

(1, 35694), (2, 35850), (4, 35874), (5, 35910), (6, 35916), (7, 35922), (14, 36024), (16, 36063), (Start: 17 @36159 has 5 MA's), (Start: 18 @36162 has 10 MA's), (20, 36204), (22, 36255), (37, 36588), (44, 36651),

Gene: Franzy_45 Start: 36175, Stop: 36687, Start Num: 17

Candidate Starts for Franzy_45:

(1, 35710), (2, 35866), (4, 35890), (5, 35926), (6, 35932), (7, 35938), (14, 36040), (16, 36079), (Start: 17 @36175 has 5 MA's), (Start: 18 @36178 has 10 MA's), (20, 36220), (22, 36271), (37, 36604), (44, 36667),

Gene: GravityBall_47 Start: 36285, Stop: 36674, Start Num: 18

Candidate Starts for GravityBall_47:

(13, 36138), (Start: 18 @36285 has 10 MA's), (21, 36294), (24, 36357), (32, 36588), (34, 36621),

Gene: JKerns_47 Start: 36354, Stop: 36812, Start Num: 18

Candidate Starts for JKerns_47:

(9, 36138), (Start: 18 @36354 has 10 MA's), (35, 36666), (39, 36702),

Gene: Jawnski_44 Start: 35695, Stop: 36195, Start Num: 17

Candidate Starts for Jawnski_44:

(Start: 17 @35695 has 5 MA's), (Start: 18 @35698 has 10 MA's), (19, 35719), (20, 35740), (33, 36076), (36, 36112), (40, 36136), (43, 36145),

Gene: Jordan_47 Start: 36244, Stop: 36639, Start Num: 18

Candidate Starts for Jordan_47:

(9, 36028), (11, 36085), (12, 36094), (Start: 18 @36244 has 10 MA's), (24, 36316), (29, 36454), (31, 36469), (38, 36514), (41, 36535), (45, 36589),

Gene: King2_44 Start: 36006, Stop: 36518, Start Num: 17

Candidate Starts for King2_44:

(2, 35694), (4, 35718), (5, 35754), (6, 35760), (7, 35766), (10, 35823), (16, 35907), (Start: 17 @36006 has 5 MA's), (Start: 18 @36009 has 10 MA's), (20, 36051), (22, 36102), (25, 36159), (26, 36165), (37, 36435), (44, 36498),

Gene: LeeroyJ_47 Start: 36218, Stop: 36607, Start Num: 18

Candidate Starts for LeeroyJ_47:

(13, 36074), (Start: 18 @36218 has 10 MA's), (21, 36227), (24, 36290), (32, 36521),

Gene: Martha_47 Start: 36224, Stop: 36670, Start Num: 15

Candidate Starts for Martha_47:

(Start: 15 @36224 has 1 MA's), (Start: 18 @36329 has 10 MA's), (23, 36377), (28, 36503),

Gene: NathanVaag_45 Start: 35939, Stop: 36430, Start Num: 18

Candidate Starts for NathanVaag_45:

(5, 35687), (6, 35693), (7, 35699), (14, 35801), (16, 35840), (Start: 17 @35936 has 5 MA's), (Start: 18 @35939 has 10 MA's), (19, 35960), (20, 35981), (30, 36278), (37, 36347), (42, 36371), (44, 36410),

Gene: Piccoletto_45 Start: 36083, Stop: 36493, Start Num: 17

Candidate Starts for Piccoletto_45:

(Start: 17 @36083 has 5 MA's), (Start: 18 @36086 has 10 MA's), (19, 36107), (20, 36128),

Gene: Shade_47 Start: 36112, Stop: 36564, Start Num: 18

Candidate Starts for Shade_47:

(3, 35812), (8, 35881), (Start: 18 @36112 has 10 MA's), (27, 36271), (35, 36418), (39, 36454),

Gene: Sonny_47 Start: 36253, Stop: 36651, Start Num: 18

Candidate Starts for Sonny_47:

(9, 36037), (Start: 18 @36253 has 10 MA's), (27, 36412), (39, 36541),

Gene: StevieBAY_47 Start: 36282, Stop: 36671, Start Num: 18

Candidate Starts for StevieBAY_47:

(13, 36138), (Start: 18 @36282 has 10 MA's), (21, 36291), (24, 36354), (32, 36585), (34, 36618),

Gene: Timinator_47 Start: 36218, Stop: 36538, Start Num: 18

Candidate Starts for Timinator_47:

(13, 36074), (Start: 18 @36218 has 10 MA's), (21, 36227), (24, 36290),