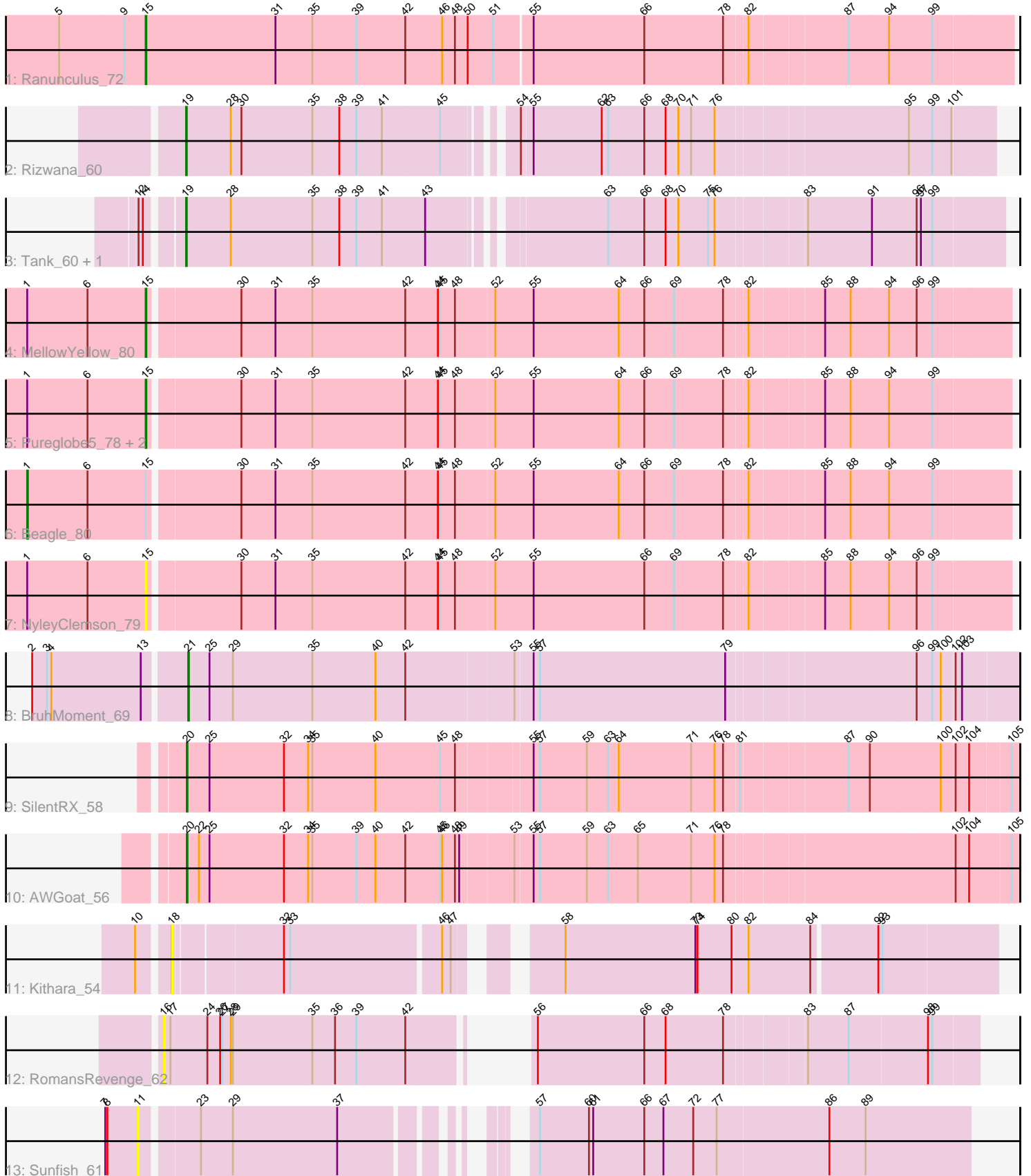


# Pham 196914



Note: Tracks are now grouped by subcluster and scaled. Switching in subcluster is indicated by changes in track color. Track scale is now set by default to display the region 30 bp upstream of start 1 to 30 bp downstream of the last possible start. If this default region is judged to be packed too tightly with annotated starts, the track will be further scaled to only show that region of the ORF with annotated starts. This action will be indicated by adding "Zoomed" to the title. For starts, yellow indicates the location of called starts comprised solely of Glimmer/GeneMark auto-annotations, green indicates the location of called starts with at least 1 manual gene annotation.

## Pham 196914 Report

This analysis was run 12/09/24 on database version 580.

Pham number 196914 has 16 members, 4 are drafts.

Phages represented in each track:

- Track 1 : Ranunculus\_72
- Track 2 : Rizwana\_60
- Track 3 : Tank\_60, Wilde\_62
- Track 4 : MellowYellow\_80
- Track 5 : Pureglobe5\_78, Odyssey395\_80, Pointis\_76
- Track 6 : Beagle\_80
- Track 7 : NyleyClemson\_79
- Track 8 : BruhMoment\_69
- Track 9 : SilentRX\_58
- Track 10 : AWGoat\_56
- Track 11 : Kithara\_54
- Track 12 : RomansRevenge\_62
- Track 13 : Sunfish\_61

### ***Summary of Final Annotations (See graph section above for start numbers):***

The start number called the most often in the published annotations is 15, it was called in 5 of the 12 non-draft genes in the pham.

Genes that call this "Most Annotated" start:

- MellowYellow\_80, NyleyClemson\_79, Odyssey395\_80, Pointis\_76, Pureglobe5\_78, Ranunculus\_72,

Genes that have the "Most Annotated" start but do not call it:

- Beagle\_80,

Genes that do not have the "Most Annotated" start:

- AWGoat\_56, BruhMoment\_69, Kithara\_54, Rizwana\_60, RomansRevenge\_62, SilentRX\_58, Sunfish\_61, Tank\_60, Wilde\_62,

### **Summary by start number:**

Start 1:

- Found in 6 of 16 ( 37.5% ) of genes in pham

- Manual Annotations of this start: 1 of 12
- Called 16.7% of time when present
- Phage (with cluster) where this start called: Beagle\_80 (AP2),

Start 11:

- Found in 1 of 16 ( 6.2% ) of genes in pham
- No Manual Annotations of this start.
- Called 100.0% of time when present
- Phage (with cluster) where this start called: Sunfish\_61 (singleton),

Start 15:

- Found in 7 of 16 ( 43.8% ) of genes in pham
- Manual Annotations of this start: 5 of 12
- Called 85.7% of time when present
- Phage (with cluster) where this start called: MellowYellow\_80 (AP2), NyleyClemson\_79 (AP2), Odyssey395\_80 (AP2), Pointis\_76 (AP2), Pureglobe5\_78 (AP2), Ranunculus\_72 (AP),

Start 16:

- Found in 1 of 16 ( 6.2% ) of genes in pham
- No Manual Annotations of this start.
- Called 100.0% of time when present
- Phage (with cluster) where this start called: RomansRevenge\_62 (singleton),

Start 18:

- Found in 1 of 16 ( 6.2% ) of genes in pham
- No Manual Annotations of this start.
- Called 100.0% of time when present
- Phage (with cluster) where this start called: Kithara\_54 (singleton),

Start 19:

- Found in 3 of 16 ( 18.8% ) of genes in pham
- Manual Annotations of this start: 3 of 12
- Called 100.0% of time when present
- Phage (with cluster) where this start called: Rizwana\_60 (AP1), Tank\_60 (AP1), Wilde\_62 (AP1),

Start 20:

- Found in 2 of 16 ( 12.5% ) of genes in pham
- Manual Annotations of this start: 2 of 12
- Called 100.0% of time when present
- Phage (with cluster) where this start called: AWGoat\_56 (AP4), SilentRX\_58 (AP4),

Start 21:

- Found in 1 of 16 ( 6.2% ) of genes in pham
- Manual Annotations of this start: 1 of 12
- Called 100.0% of time when present
- Phage (with cluster) where this start called: BruhMoment\_69 (AP3),

### **Summary by clusters:**

There are 6 clusters represented in this pham: singleton, AP2, AP3, AP1, AP4, AP,

Info for manual annotations of cluster AP:

- Start number 15 was manually annotated 1 time for cluster AP.

Info for manual annotations of cluster AP1:

- Start number 19 was manually annotated 3 times for cluster AP1.

Info for manual annotations of cluster AP2:

- Start number 1 was manually annotated 1 time for cluster AP2.
- Start number 15 was manually annotated 4 times for cluster AP2.

Info for manual annotations of cluster AP3:

- Start number 21 was manually annotated 1 time for cluster AP3.

Info for manual annotations of cluster AP4:

- Start number 20 was manually annotated 2 times for cluster AP4.

### **Gene Information:**

Gene: AWGoat\_56 Start: 42055, Stop: 40922, Start Num: 20

Candidate Starts for AWGoat\_56:

(Start: 20 @42055 has 2 MA's), (22, 42040), (25, 42025), (32, 41920), (34, 41887), (35, 41881), (39, 41821), (40, 41794), (42, 41752), (45, 41704), (46, 41701), (48, 41683), (49, 41677), (53, 41605), (55, 41581), (57, 41572), (59, 41506), (63, 41476), (65, 41434), (71, 41359), (76, 41326), (78, 41314), (102, 41008), (104, 40990), (105, 40933),

Gene: Beagle\_80 Start: 47788, Stop: 46451, Start Num: 1

Candidate Starts for Beagle\_80:

(Start: 1 @47788 has 1 MA's), (6, 47704), (Start: 15 @47623 has 5 MA's), (30, 47503), (31, 47455), (35, 47404), (42, 47275), (44, 47230), (45, 47227), (48, 47206), (52, 47152), (55, 47098), (64, 46978), (66, 46942), (69, 46900), (78, 46831), (82, 46801), (85, 46702), (88, 46666), (94, 46615), (99, 46558),

Gene: BruhMoment\_69 Start: 46840, Stop: 45707, Start Num: 21

Candidate Starts for BruhMoment\_69:

(2, 47047), (3, 47026), (4, 47020), (13, 46894), (Start: 21 @46840 has 1 MA's), (25, 46810), (29, 46777), (35, 46666), (40, 46579), (42, 46537), (53, 46390), (55, 46366), (57, 46357), (79, 46096), (96, 45844), (99, 45823), (100, 45811), (102, 45793), (103, 45784),

Gene: Kithara\_54 Start: 42044, Stop: 40986, Start Num: 18

Candidate Starts for Kithara\_54:

(10, 42083), (18, 42044), (32, 41906), (33, 41897), (46, 41693), (47, 41681), (58, 41582), (73, 41399), (74, 41396), (80, 41348), (82, 41324), (84, 41237), (92, 41150), (93, 41144),

Gene: MellowYellow\_80 Start: 47751, Stop: 46579, Start Num: 15

Candidate Starts for MellowYellow\_80:

(Start: 1 @47916 has 1 MA's), (6, 47832), (Start: 15 @47751 has 5 MA's), (30, 47631), (31, 47583), (35, 47532), (42, 47403), (44, 47358), (45, 47355), (48, 47334), (52, 47280), (55, 47226), (64, 47106), (66, 47070), (69, 47028), (78, 46959), (82, 46929), (85, 46830), (88, 46794), (94, 46743), (96, 46707), (99, 46686),

Gene: NyleyClemson\_79 Start: 47366, Stop: 46194, Start Num: 15

Candidate Starts for NyleyClemson\_79:

(Start: 1 @47531 has 1 MA's), (6, 47447), (Start: 15 @47366 has 5 MA's), (30, 47246), (31, 47198), (35, 47147), (42, 47018), (44, 46973), (45, 46970), (48, 46949), (52, 46895), (55, 46841), (66, 46685), (69, 46643), (78, 46574), (82, 46544), (85, 46445), (88, 46409), (94, 46358), (96, 46322), (99, 46301),

Gene: Odyssey395\_80 Start: 47860, Stop: 46688, Start Num: 15

Candidate Starts for Odyssey395\_80:

(Start: 1 @48025 has 1 MA's), (6, 47941), (Start: 15 @47860 has 5 MA's), (30, 47740), (31, 47692), (35, 47641), (42, 47512), (44, 47467), (45, 47464), (48, 47443), (52, 47389), (55, 47335), (64, 47215), (66, 47179), (69, 47137), (78, 47068), (82, 47038), (85, 46939), (88, 46903), (94, 46852), (99, 46795),

Gene: Pointis\_76 Start: 47436, Stop: 46264, Start Num: 15

Candidate Starts for Pointis\_76:

(Start: 1 @47601 has 1 MA's), (6, 47517), (Start: 15 @47436 has 5 MA's), (30, 47316), (31, 47268), (35, 47217), (42, 47088), (44, 47043), (45, 47040), (48, 47019), (52, 46965), (55, 46911), (64, 46791), (66, 46755), (69, 46713), (78, 46644), (82, 46614), (85, 46515), (88, 46479), (94, 46428), (99, 46371),

Gene: Pureglobe5\_78 Start: 47880, Stop: 46708, Start Num: 15

Candidate Starts for Pureglobe5\_78:

(Start: 1 @48045 has 1 MA's), (6, 47961), (Start: 15 @47880 has 5 MA's), (30, 47760), (31, 47712), (35, 47661), (42, 47532), (44, 47487), (45, 47484), (48, 47463), (52, 47409), (55, 47355), (64, 47235), (66, 47199), (69, 47157), (78, 47088), (82, 47058), (85, 46959), (88, 46923), (94, 46872), (99, 46815),

Gene: Ranunculus\_72 Start: 50033, Stop: 48846, Start Num: 15

Candidate Starts for Ranunculus\_72:

(5, 50150), (9, 50063), (Start: 15 @50033 has 5 MA's), (31, 49850), (35, 49799), (39, 49739), (42, 49670), (46, 49619), (48, 49601), (50, 49583), (51, 49547), (55, 49496), (66, 49340), (78, 49229), (82, 49199), (87, 49067), (94, 49013), (99, 48956),

Gene: Rizwana\_60 Start: 44233, Stop: 43166, Start Num: 19

Candidate Starts for Rizwana\_60:

(Start: 19 @44233 has 3 MA's), (28, 44173), (30, 44158), (35, 44059), (38, 44023), (39, 43999), (41, 43963), (45, 43882), (54, 43807), (55, 43792), (62, 43696), (63, 43687), (66, 43636), (68, 43606), (70, 43588), (71, 43570), (76, 43537), (95, 43279), (99, 43249), (101, 43222),

Gene: RomansRevenge\_62 Start: 44645, Stop: 43632, Start Num: 16

Candidate Starts for RomansRevenge\_62:

(16, 44645), (17, 44636), (24, 44585), (26, 44567), (27, 44564), (28, 44552), (29, 44549), (35, 44438), (36, 44408), (39, 44378), (42, 44309), (56, 44228), (66, 44078), (68, 44048), (78, 43967), (83, 43862), (87, 43805), (98, 43700), (99, 43694),

Gene: SilentRX\_58 Start: 43297, Stop: 42170, Start Num: 20

Candidate Starts for SilentRX\_58:

(Start: 20 @43297 has 2 MA's), (25, 43267), (32, 43162), (34, 43129), (35, 43123), (40, 43036), (45, 42946), (48, 42925), (55, 42826), (57, 42817), (59, 42751), (63, 42721), (64, 42706), (71, 42604), (76, 42571), (78, 42559), (81, 42538), (87, 42397), (90, 42367), (100, 42271), (102, 42253), (104, 42235), (105, 42181),

Gene: Sunfish\_61 Start: 40932, Stop: 39892, Start Num: 11

Candidate Starts for Sunfish\_61:

(7, 40977), (8, 40974), (11, 40932), (23, 40860), (29, 40815), (37, 40668), (57, 40494), (60, 40425), (61, 40419), (66, 40347), (67, 40320), (72, 40278), (77, 40245), (86, 40089), (89, 40038),

Gene: Tank\_60 Start: 44325, Stop: 43243, Start Num: 19

Candidate Starts for Tank\_60:

(12, 44373), (14, 44367), (Start: 19 @44325 has 3 MA's), (28, 44265), (35, 44151), (38, 44115), (39, 44091), (41, 44055), (43, 43995), (63, 43779), (66, 43728), (68, 43698), (70, 43680), (75, 43638), (76, 43629), (83, 43512), (91, 43422), (96, 43362), (97, 43356), (99, 43341),

Gene: Wilde\_62 Start: 44624, Stop: 43542, Start Num: 19

Candidate Starts for Wilde\_62:

(12, 44672), (14, 44666), (Start: 19 @44624 has 3 MA's), (28, 44564), (35, 44450), (38, 44414), (39, 44390), (41, 44354), (43, 44294), (63, 44078), (66, 44027), (68, 43997), (70, 43979), (75, 43937), (76, 43928), (83, 43811), (91, 43721), (96, 43661), (97, 43655), (99, 43640),