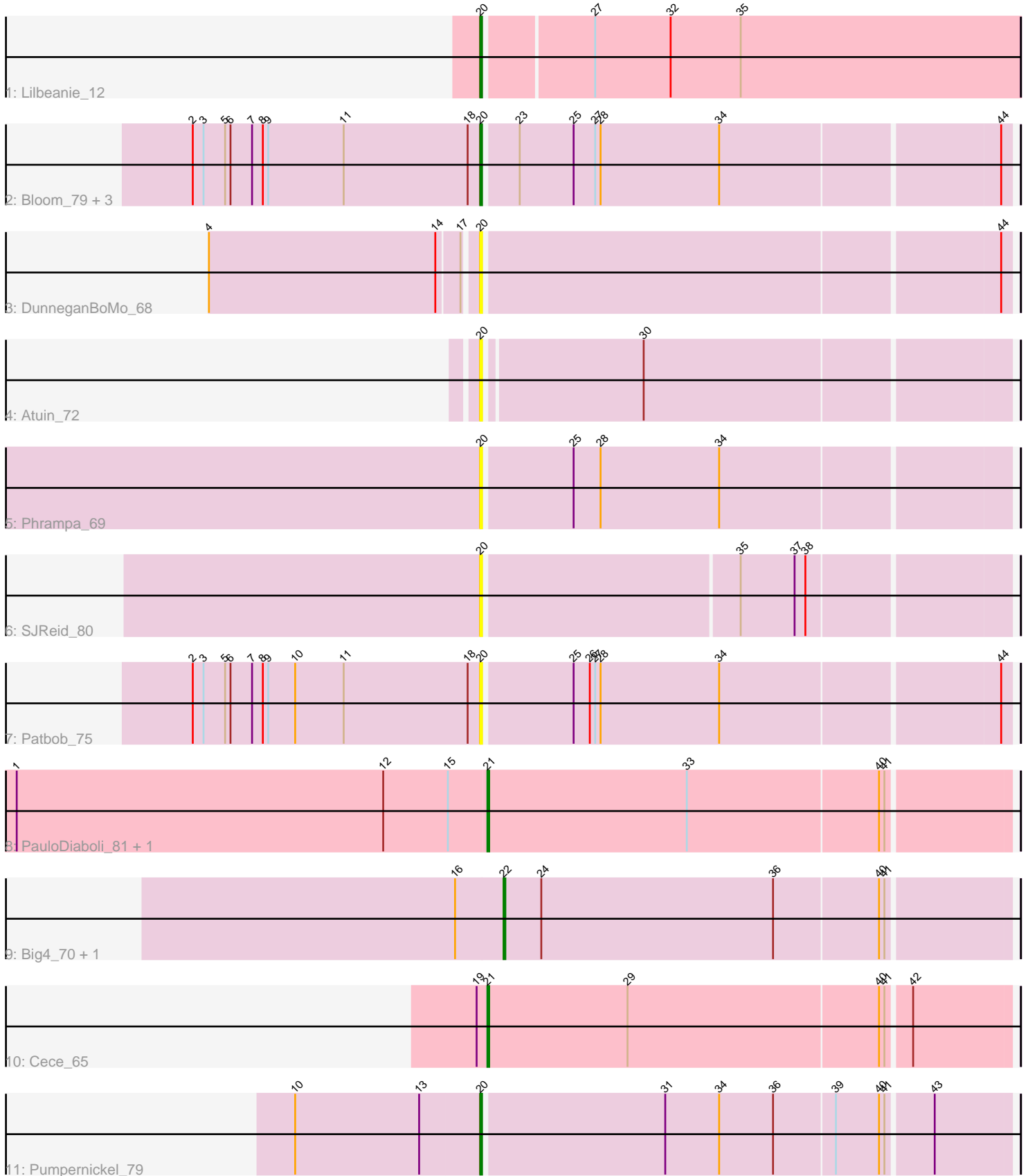


Pham 196917



Note: Tracks are now grouped by subcluster and scaled. Switching in subcluster is indicated by changes in track color. Track scale is now set by default to display the region 30 bp upstream of start 1 to 30 bp downstream of the last possible start. If this default region is judged to be packed too tightly with annotated starts, the track will be further scaled to only show that region of the ORF with annotated starts. This action will be indicated by adding "Zoomed" to the title. For starts, yellow indicates the location of called starts comprised solely of Glimmer/GeneMark auto-annotations, green indicates the location of called starts with at least 1 manual gene annotation.

Pham 196917 Report

This analysis was run 12/09/24 on database version 580.

Pham number 196917 has 16 members, 7 are drafts.

Phages represented in each track:

- Track 1 : Lilbeanie_12
- Track 2 : Bloom_79, Talia1610_75, Racecar_76, Mimi_82
- Track 3 : DunneganBoMo_68
- Track 4 : Atuin_72
- Track 5 : Phrampa_69
- Track 6 : SJReid_80
- Track 7 : Patbob_75
- Track 8 : PauloDiaboli_81, A3Wally_81
- Track 9 : Big4_70, Zooman_66
- Track 10 : Cece_65
- Track 11 : Pumpernickel_79

Summary of Final Annotations (See graph section above for start numbers):

The start number called the most often in the published annotations is 20, it was called in 4 of the 9 non-draft genes in the pham.

Genes that call this "Most Annotated" start:

- Atuin_72, Bloom_79, DunneganBoMo_68, Lilbeanie_12, Mimi_82, Patbob_75, Phrampa_69, Pumpernickel_79, Racecar_76, SJReid_80, Talia1610_75,

Genes that have the "Most Annotated" start but do not call it:

-

Genes that do not have the "Most Annotated" start:

- A3Wally_81, Big4_70, Cece_65, PauloDiaboli_81, Zooman_66,

Summary by start number:

Start 20:

- Found in 11 of 16 (68.8%) of genes in pham
- Manual Annotations of this start: 4 of 9
- Called 100.0% of time when present

- Phage (with cluster) where this start called: Atuin_72 (FC), Bloom_79 (FC), DunneganBoMo_68 (FC), Lilbeanie_12 (DE5), Mimi_82 (FC), Patbob_75 (FC), Phrampa_69 (FC), Pumpnickel_79 (GD4), Racecar_76 (FC), SJReid_80 (FC), Talia1610_75 (FC),

Start 21:

- Found in 3 of 16 (18.8%) of genes in pham
- Manual Annotations of this start: 3 of 9
- Called 100.0% of time when present
- Phage (with cluster) where this start called: A3Wally_81 (GD1), Cece_65 (GD3), PauloDiaboli_81 (GD1),

Start 22:

- Found in 2 of 16 (12.5%) of genes in pham
- Manual Annotations of this start: 2 of 9
- Called 100.0% of time when present
- Phage (with cluster) where this start called: Big4_70 (GD2), Zooman_66 (GD2),

Summary by clusters:

There are 6 clusters represented in this pham: GD1, GD2, GD3, GD4, DE5, FC,

Info for manual annotations of cluster DE5:

- Start number 20 was manually annotated 1 time for cluster DE5.

Info for manual annotations of cluster FC:

- Start number 20 was manually annotated 2 times for cluster FC.

Info for manual annotations of cluster GD1:

- Start number 21 was manually annotated 2 times for cluster GD1.

Info for manual annotations of cluster GD2:

- Start number 22 was manually annotated 2 times for cluster GD2.

Info for manual annotations of cluster GD3:

- Start number 21 was manually annotated 1 time for cluster GD3.

Info for manual annotations of cluster GD4:

- Start number 20 was manually annotated 1 time for cluster GD4.

Gene Information:

Gene: A3Wally_81 Start: 29548, Stop: 29832, Start Num: 21

Candidate Starts for A3Wally_81:

(1, 29287), (12, 29491), (15, 29527), (Start: 21 @29548 has 3 MA's), (33, 29659), (40, 29764), (41, 29767),

Gene: Atuin_72 Start: 30721, Stop: 31002, Start Num: 20

Candidate Starts for Atuin_72:

(Start: 20 @30721 has 4 MA's), (30, 30805),

Gene: Big4_70 Start: 28857, Stop: 29132, Start Num: 22

Candidate Starts for Big4_70:

(16, 28842), (Start: 22 @28857 has 2 MA's), (24, 28878), (36, 29007), (40, 29064), (41, 29067),

Gene: Bloom_79 Start: 33362, Stop: 33646, Start Num: 20

Candidate Starts for Bloom_79:

(2, 33203), (3, 33209), (5, 33221), (6, 33224), (7, 33236), (8, 33242), (9, 33245), (11, 33287), (18, 33356), (Start: 20 @33362 has 4 MA's), (23, 33380), (25, 33410), (27, 33422), (28, 33425), (34, 33491), (44, 33641),

Gene: Cece_65 Start: 27218, Stop: 27502, Start Num: 21

Candidate Starts for Cece_65:

(19, 27212), (Start: 21 @27218 has 3 MA's), (29, 27296), (40, 27434), (41, 27437), (42, 27449),

Gene: DunneganBoMo_68 Start: 27488, Stop: 27772, Start Num: 20

Candidate Starts for DunneganBoMo_68:

(4, 27344), (14, 27470), (17, 27482), (Start: 20 @27488 has 4 MA's), (44, 27767),

Gene: Lilbeanie_12 Start: 4954, Stop: 5247, Start Num: 20

Candidate Starts for Lilbeanie_12:

(Start: 20 @4954 has 4 MA's), (27, 5011), (32, 5053), (35, 5092),

Gene: Mimi_82 Start: 32709, Stop: 32993, Start Num: 20

Candidate Starts for Mimi_82:

(2, 32550), (3, 32556), (5, 32568), (6, 32571), (7, 32583), (8, 32589), (9, 32592), (11, 32634), (18, 32703), (Start: 20 @32709 has 4 MA's), (23, 32727), (25, 32757), (27, 32769), (28, 32772), (34, 32838), (44, 32988),

Gene: Patbob_75 Start: 33002, Stop: 33286, Start Num: 20

Candidate Starts for Patbob_75:

(2, 32843), (3, 32849), (5, 32861), (6, 32864), (7, 32876), (8, 32882), (9, 32885), (10, 32900), (11, 32927), (18, 32996), (Start: 20 @33002 has 4 MA's), (25, 33050), (26, 33059), (27, 33062), (28, 33065), (34, 33131), (44, 33281),

Gene: PauloDiaboli_81 Start: 28905, Stop: 29189, Start Num: 21

Candidate Starts for PauloDiaboli_81:

(1, 28644), (12, 28848), (15, 28884), (Start: 21 @28905 has 3 MA's), (33, 29016), (40, 29121), (41, 29124),

Gene: Phrampa_69 Start: 30028, Stop: 30312, Start Num: 20

Candidate Starts for Phrampa_69:

(Start: 20 @30028 has 4 MA's), (25, 30076), (28, 30091), (34, 30157),

Gene: Pumpernickel_79 Start: 31092, Stop: 31376, Start Num: 20

Candidate Starts for Pumpernickel_79:

(10, 30990), (13, 31059), (Start: 20 @31092 has 4 MA's), (31, 31191), (34, 31221), (36, 31251), (39, 31284), (40, 31308), (41, 31311), (43, 31335),

Gene: Racecar_76 Start: 33362, Stop: 33646, Start Num: 20

Candidate Starts for Racecar_76:

(2, 33203), (3, 33209), (5, 33221), (6, 33224), (7, 33236), (8, 33242), (9, 33245), (11, 33287), (18, 33356), (Start: 20 @33362 has 4 MA's), (23, 33380), (25, 33410), (27, 33422), (28, 33425), (34, 33491), (44, 33641),

Gene: SJReid_80 Start: 34582, Stop: 34863, Start Num: 20

Candidate Starts for SJReid_80:

(Start: 20 @34582 has 4 MA's), (35, 34720), (37, 34750), (38, 34756),

Gene: Talia1610_75 Start: 32727, Stop: 33011, Start Num: 20

Candidate Starts for Talia1610_75:

(2, 32568), (3, 32574), (5, 32586), (6, 32589), (7, 32601), (8, 32607), (9, 32610), (11, 32652), (18, 32721), (Start: 20 @32727 has 4 MA's), (23, 32745), (25, 32775), (27, 32787), (28, 32790), (34, 32856), (44, 33006),

Gene: Zooman_66 Start: 27525, Stop: 27800, Start Num: 22

Candidate Starts for Zooman_66:

(16, 27510), (Start: 22 @27525 has 2 MA's), (24, 27546), (36, 27675), (40, 27732), (41, 27735),