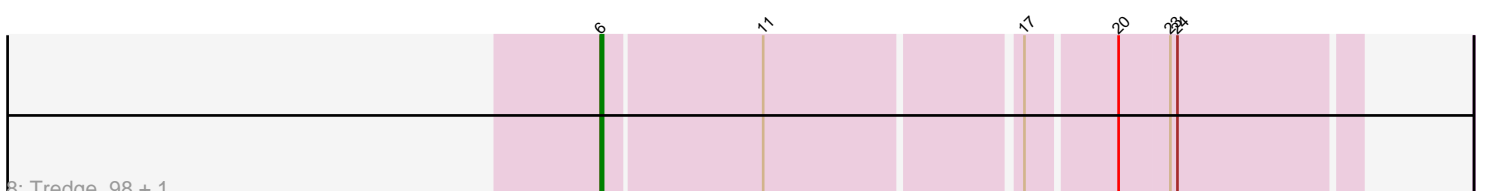
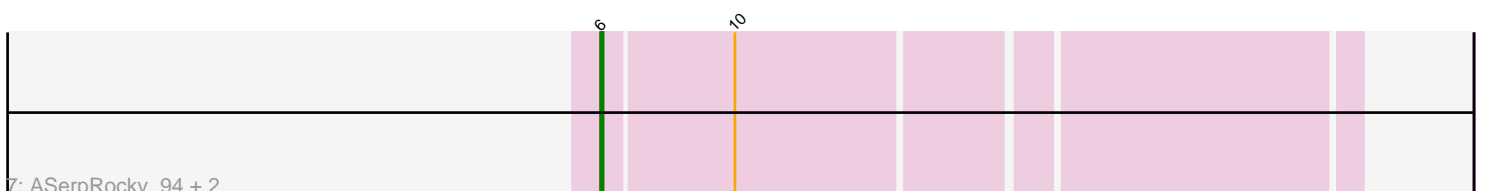
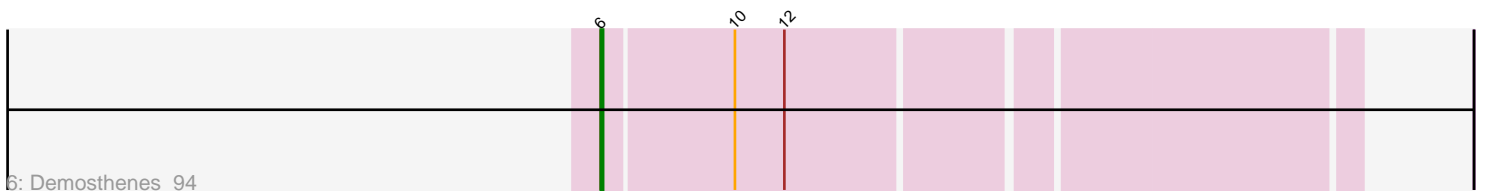
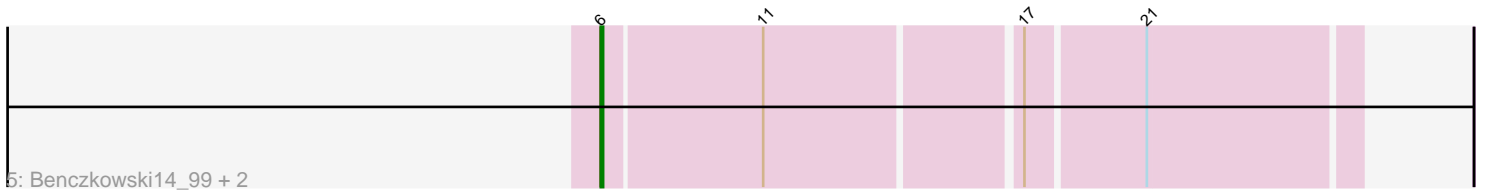
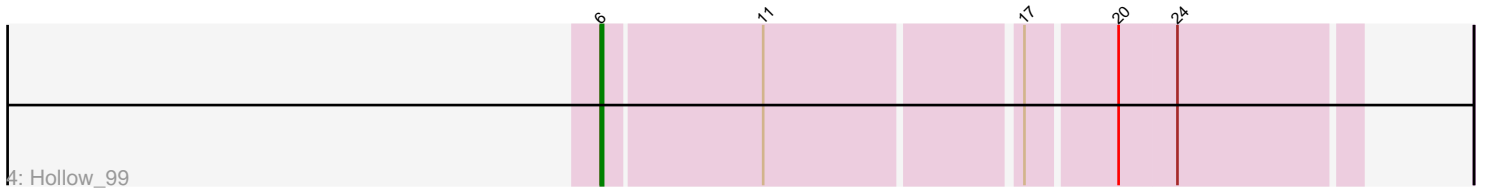
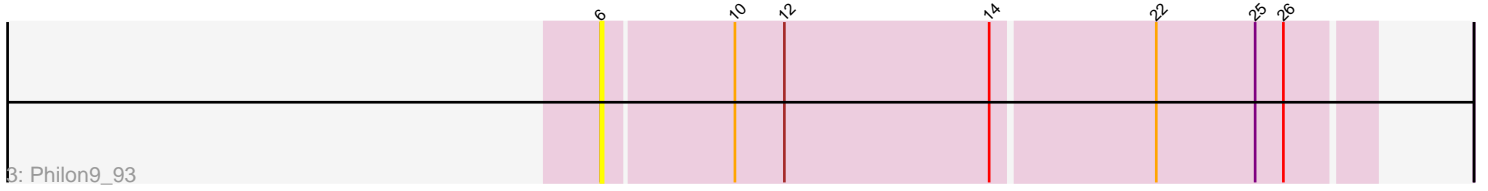
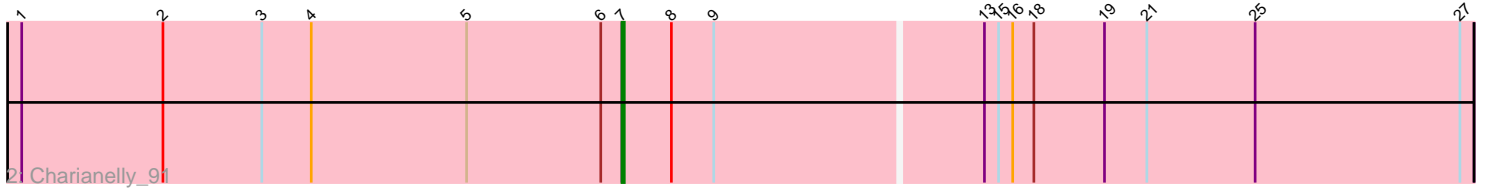
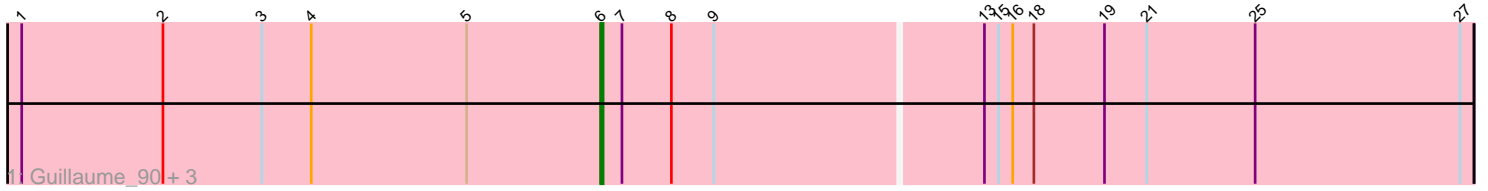


Pham 196928



Note: Tracks are now grouped by subcluster and scaled. Switching in subcluster is indicated by changes in track color. Track scale is now set by default to display the region 30 bp upstream of start 1 to 30 bp downstream of the last possible start. If this default region is judged to be packed too tightly with annotated starts, the track will be further scaled to only show that region of the ORF with annotated starts. This action will be indicated by adding "Zoomed" to the title. For starts, yellow indicates the location of called starts comprised solely of Glimmer/GeneMark auto-annotations, green indicates the location of called starts with at least 1 manual gene annotation.

Pham 196928 Report

This analysis was run 12/09/24 on database version 580.

Pham number 196928 has 16 members, 2 are drafts.

Phages represented in each track:

- Track 1 : Guillaume_90, Anamika_90, Nimi13_90, Bianmat_91
- Track 2 : Charianelly_91
- Track 3 : Philon9_93
- Track 4 : Hollow_99
- Track 5 : Benczkowski14_99, Katyusha_97, Niagara_98
- Track 6 : Demosthenes_94
- Track 7 : ASerpRocky_94, Teech_96, Kvothe_98
- Track 8 : Tredge_98, Teatealatte_99

Summary of Final Annotations (See graph section above for start numbers):

The start number called the most often in the published annotations is 6, it was called in 13 of the 14 non-draft genes in the pham.

Genes that call this "Most Annotated" start:

- ASerpRocky_94, Anamika_90, Benczkowski14_99, Bianmat_91, Demosthenes_94, Guillaume_90, Hollow_99, Katyusha_97, Kvothe_98, Niagara_98, Nimi13_90, Philon9_93, Teatealatte_99, Teech_96, Tredge_98,

Genes that have the "Most Annotated" start but do not call it:

- Charianelly_91,

Genes that do not have the "Most Annotated" start:

-

Summary by start number:

Start 6:

- Found in 16 of 16 (100.0%) of genes in pham
- Manual Annotations of this start: 13 of 14
- Called 93.8% of time when present
- Phage (with cluster) where this start called: ASerpRocky_94 (CS4), Anamika_90 (CS3), Benczkowski14_99 (CS4), Bianmat_91 (CS3), Demosthenes_94 (CS4), Guillaume_90 (CS3), Hollow_99 (CS4), Katyusha_97 (CS4), Kvothe_98 (CS4),

Niagara_98 (CS4), Nimi13_90 (CS3), Philon9_93 (CS4), Teatealatte_99 (CS4), Teech_96 (CS4), Tredge_98 (CS4),

Start 7:

- Found in 5 of 16 (31.2%) of genes in pham
- Manual Annotations of this start: 1 of 14
- Called 20.0% of time when present
- Phage (with cluster) where this start called: Charianelly_91 (CS3),

Summary by clusters:

There are 2 clusters represented in this pham: CS4, CS3,

Info for manual annotations of cluster CS3:

- Start number 6 was manually annotated 4 times for cluster CS3.
- Start number 7 was manually annotated 1 time for cluster CS3.

Info for manual annotations of cluster CS4:

- Start number 6 was manually annotated 9 times for cluster CS4.

Gene Information:

Gene: ASerpRocky_94 Start: 73015, Stop: 72713, Start Num: 6

Candidate Starts for ASerpRocky_94:

(Start: 6 @73015 has 13 MA's), (10, 72961),

Gene: Anamika_90 Start: 71196, Stop: 70831, Start Num: 6

Candidate Starts for Anamika_90:

(1, 71442), (2, 71382), (3, 71340), (4, 71319), (5, 71253), (Start: 6 @71196 has 13 MA's), (Start: 7 @71187 has 1 MA's), (8, 71166), (9, 71148), (13, 71037), (15, 71031), (16, 71025), (18, 71016), (19, 70986), (21, 70968), (25, 70923), (27, 70836),

Gene: Benczkowski14_99 Start: 74036, Stop: 73734, Start Num: 6

Candidate Starts for Benczkowski14_99:

(Start: 6 @74036 has 13 MA's), (11, 73970), (17, 73868), (21, 73820),

Gene: Bianmat_91 Start: 71208, Stop: 70843, Start Num: 6

Candidate Starts for Bianmat_91:

(1, 71454), (2, 71394), (3, 71352), (4, 71331), (5, 71265), (Start: 6 @71208 has 13 MA's), (Start: 7 @71199 has 1 MA's), (8, 71178), (9, 71160), (13, 71049), (15, 71043), (16, 71037), (18, 71028), (19, 70998), (21, 70980), (25, 70935), (27, 70848),

Gene: Charianelly_91 Start: 70912, Stop: 70556, Start Num: 7

Candidate Starts for Charianelly_91:

(1, 71167), (2, 71107), (3, 71065), (4, 71044), (5, 70978), (Start: 6 @70921 has 13 MA's), (Start: 7 @70912 has 1 MA's), (8, 70891), (9, 70873), (13, 70762), (15, 70756), (16, 70750), (18, 70741), (19, 70711), (21, 70693), (25, 70648), (27, 70561),

Gene: Demosthenes_94 Start: 72740, Stop: 72438, Start Num: 6

Candidate Starts for Demosthenes_94:

(Start: 6 @72740 has 13 MA's), (10, 72686), (12, 72665),

Gene: Guillaume_90 Start: 70929, Stop: 70564, Start Num: 6

Candidate Starts for Guillaume_90:

(1, 71175), (2, 71115), (3, 71073), (4, 71052), (5, 70986), (Start: 6 @70929 has 13 MA's), (Start: 7 @70920 has 1 MA's), (8, 70899), (9, 70881), (13, 70770), (15, 70764), (16, 70758), (18, 70749), (19, 70719), (21, 70701), (25, 70656), (27, 70569),

Gene: Hollow_99 Start: 74062, Stop: 73760, Start Num: 6

Candidate Starts for Hollow_99:

(Start: 6 @74062 has 13 MA's), (11, 73996), (17, 73894), (20, 73858), (24, 73834),

Gene: Katyusha_97 Start: 74036, Stop: 73734, Start Num: 6

Candidate Starts for Katyusha_97:

(Start: 6 @74036 has 13 MA's), (11, 73970), (17, 73868), (21, 73820),

Gene: Kvothe_98 Start: 74124, Stop: 73822, Start Num: 6

Candidate Starts for Kvothe_98:

(Start: 6 @74124 has 13 MA's), (10, 74070),

Gene: Niagara_98 Start: 73961, Stop: 73659, Start Num: 6

Candidate Starts for Niagara_98:

(Start: 6 @73961 has 13 MA's), (11, 73895), (17, 73793), (21, 73745),

Gene: Nimi13_90 Start: 70919, Stop: 70554, Start Num: 6

Candidate Starts for Nimi13_90:

(1, 71165), (2, 71105), (3, 71063), (4, 71042), (5, 70976), (Start: 6 @70919 has 13 MA's), (Start: 7 @70910 has 1 MA's), (8, 70889), (9, 70871), (13, 70760), (15, 70754), (16, 70748), (18, 70739), (19, 70709), (21, 70691), (25, 70646), (27, 70559),

Gene: Philon9_93 Start: 73350, Stop: 73033, Start Num: 6

Candidate Starts for Philon9_93:

(Start: 6 @73350 has 13 MA's), (10, 73296), (12, 73275), (14, 73188), (22, 73122), (25, 73080), (26, 73068),

Gene: Teatealatte_99 Start: 74044, Stop: 73742, Start Num: 6

Candidate Starts for Teatealatte_99:

(Start: 6 @74044 has 13 MA's), (11, 73978), (17, 73876), (20, 73840), (23, 73819), (24, 73816),

Gene: Teech_96 Start: 73665, Stop: 73363, Start Num: 6

Candidate Starts for Teech_96:

(Start: 6 @73665 has 13 MA's), (10, 73611),

Gene: Tredge_98 Start: 74044, Stop: 73742, Start Num: 6

Candidate Starts for Tredge_98:

(Start: 6 @74044 has 13 MA's), (11, 73978), (17, 73876), (20, 73840), (23, 73819), (24, 73816),