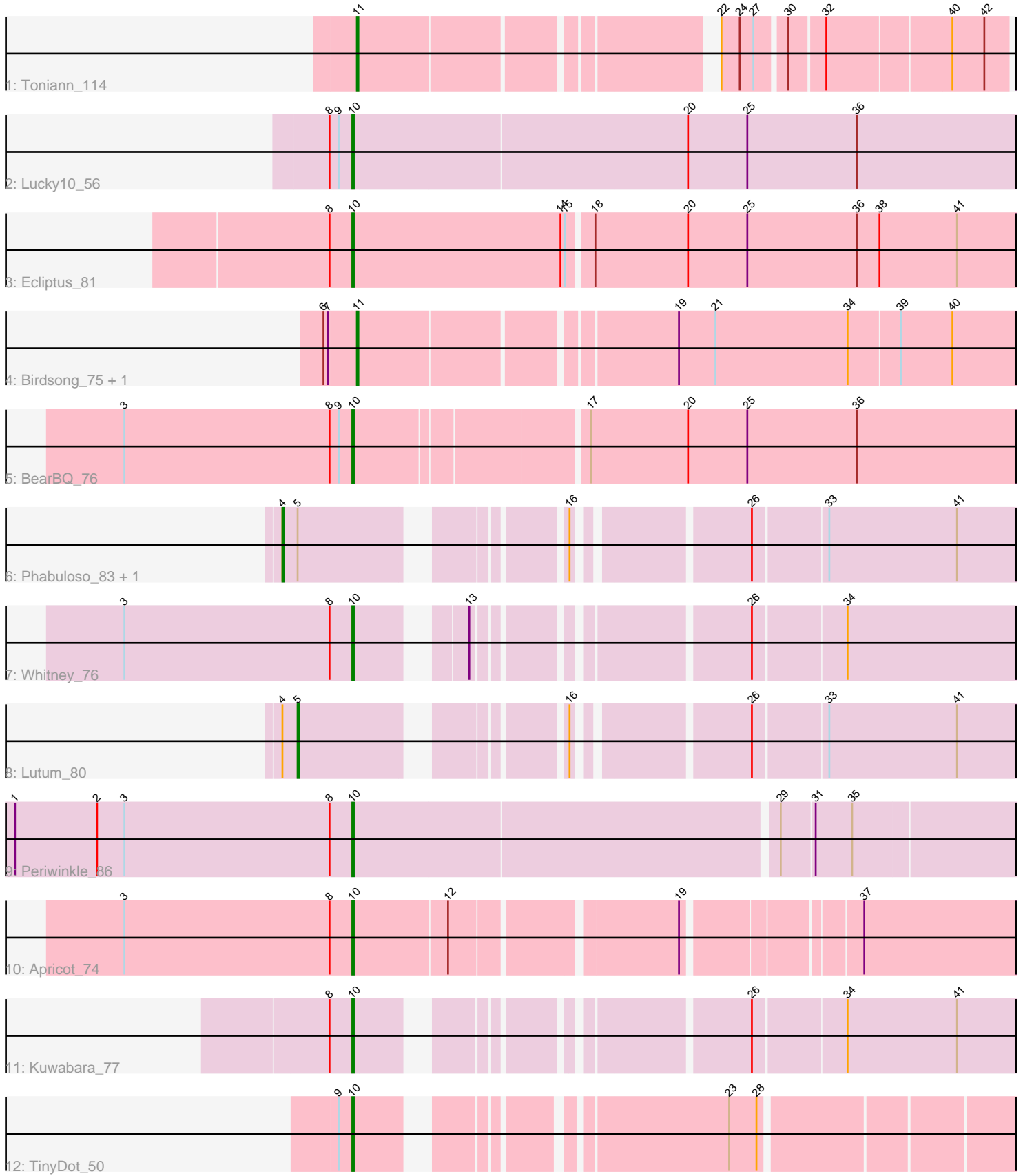


Pham 196960



Note: Tracks are now grouped by subcluster and scaled. Switching in subcluster is indicated by changes in track color. Track scale is now set by default to display the region 30 bp upstream of start 1 to 30 bp downstream of the last possible start. If this default region is judged to be packed too tightly with annotated starts, the track will be further scaled to only show that region of the ORF with annotated starts. This action will be indicated by adding "Zoomed" to the title. For starts, yellow indicates the location of called starts comprised solely of Glimmer/GeneMark auto-annotations, green indicates the location of called starts with at least 1 manual gene annotation.

Pham 196960 Report

This analysis was run 12/09/24 on database version 580.

Pham number 196960 has 14 members, 0 are drafts.

Phages represented in each track:

- Track 1 : Toniann_114
- Track 2 : Lucky10_56
- Track 3 : Ecliptus_81
- Track 4 : Birdsong_75, Asapag_76
- Track 5 : BearBQ_76
- Track 6 : Phabuloso_83, CheeseTouch_83
- Track 7 : Whitney_76
- Track 8 : Lutum_80
- Track 9 : Periwinkle_86
- Track 10 : Apricot_74
- Track 11 : Kuwabara_77
- Track 12 : TinyDot_50

Summary of Final Annotations (See graph section above for start numbers):

The start number called the most often in the published annotations is 10, it was called in 8 of the 14 non-draft genes in the pham.

Genes that call this "Most Annotated" start:

- Apricot_74, BearBQ_76, Ecliptus_81, Kuwabara_77, Lucky10_56, Periwinkle_86, TinyDot_50, Whitney_76,

Genes that have the "Most Annotated" start but do not call it:

-

Genes that do not have the "Most Annotated" start:

- Asapag_76, Birdsong_75, CheeseTouch_83, Lutum_80, Phabuloso_83, Toniann_114,

Summary by start number:

Start 4:

- Found in 3 of 14 (21.4%) of genes in pham
- Manual Annotations of this start: 2 of 14

- Called 66.7% of time when present
- Phage (with cluster) where this start called: CheeseTouch_83 (DN1), Phabuloso_83 (DN1),

Start 5:

- Found in 3 of 14 (21.4%) of genes in pham
- Manual Annotations of this start: 1 of 14
- Called 33.3% of time when present
- Phage (with cluster) where this start called: Lutum_80 (DN1),

Start 10:

- Found in 8 of 14 (57.1%) of genes in pham
- Manual Annotations of this start: 8 of 14
- Called 100.0% of time when present
- Phage (with cluster) where this start called: Apricot_74 (DN3), BearBQ_76 (DN), Ecliptus_81 (DN), Kuwabara_77 (DN4), Lucky10_56 (DH), Periwinkle_86 (DN1), TinyDot_50 (singleton), Whitney_76 (DN1),

Start 11:

- Found in 3 of 14 (21.4%) of genes in pham
- Manual Annotations of this start: 3 of 14
- Called 100.0% of time when present
- Phage (with cluster) where this start called: Asapag_76 (DN1), Birdsong_75 (DN), Toniann_114 (CQ1),

Summary by clusters:

There are 7 clusters represented in this pham: DN, singleton, DH, DN4, DN1, DN3, CQ1,

Info for manual annotations of cluster CQ1:

- Start number 11 was manually annotated 1 time for cluster CQ1.

Info for manual annotations of cluster DH:

- Start number 10 was manually annotated 1 time for cluster DH.

Info for manual annotations of cluster DN:

- Start number 10 was manually annotated 2 times for cluster DN.
- Start number 11 was manually annotated 1 time for cluster DN.

Info for manual annotations of cluster DN1:

- Start number 4 was manually annotated 2 times for cluster DN1.
- Start number 5 was manually annotated 1 time for cluster DN1.
- Start number 10 was manually annotated 2 times for cluster DN1.
- Start number 11 was manually annotated 1 time for cluster DN1.

Info for manual annotations of cluster DN3:

- Start number 10 was manually annotated 1 time for cluster DN3.

Info for manual annotations of cluster DN4:

- Start number 10 was manually annotated 1 time for cluster DN4.

Gene Information:

Gene: Apricot_74 Start: 43240, Stop: 43638, Start Num: 10

Candidate Starts for Apricot_74:

(3, 43090), (8, 43225), (Start: 10 @43240 has 8 MA's), (12, 43300), (19, 43435), (37, 43540),

Gene: Asapag_76 Start: 44092, Stop: 44502, Start Num: 11

Candidate Starts for Asapag_76:

(6, 44074), (7, 44077), (Start: 11 @44092 has 3 MA's), (19, 44284), (21, 44308), (34, 44395), (39, 44428), (40, 44461),

Gene: BearBQ_76 Start: 45954, Stop: 46376, Start Num: 10

Candidate Starts for BearBQ_76:

(3, 45804), (8, 45939), (9, 45945), (Start: 10 @45954 has 8 MA's), (17, 46098), (20, 46161), (25, 46200), (36, 46272),

Gene: Birdsong_75 Start: 43828, Stop: 44238, Start Num: 11

Candidate Starts for Birdsong_75:

(6, 43810), (7, 43813), (Start: 11 @43828 has 3 MA's), (19, 44020), (21, 44044), (34, 44131), (39, 44164), (40, 44197),

Gene: CheeseTouch_83 Start: 41580, Stop: 41996, Start Num: 4

Candidate Starts for CheeseTouch_83:

(Start: 4 @41580 has 2 MA's), (Start: 5 @41589 has 1 MA's), (16, 41730), (26, 41829), (33, 41874), (41, 41958),

Gene: Ecliptus_81 Start: 46577, Stop: 47005, Start Num: 10

Candidate Starts for Ecliptus_81:

(8, 46562), (Start: 10 @46577 has 8 MA's), (14, 46712), (15, 46715), (18, 46730), (20, 46790), (25, 46829), (36, 46901), (38, 46916), (41, 46967),

Gene: Kuwabara_77 Start: 45958, Stop: 46332, Start Num: 10

Candidate Starts for Kuwabara_77:

(8, 45943), (Start: 10 @45958 has 8 MA's), (26, 46165), (34, 46222), (41, 46294),

Gene: Lucky10_56 Start: 36216, Stop: 36647, Start Num: 10

Candidate Starts for Lucky10_56:

(8, 36201), (9, 36207), (Start: 10 @36216 has 8 MA's), (20, 36432), (25, 36471), (36, 36543),

Gene: Lutum_80 Start: 45247, Stop: 45654, Start Num: 5

Candidate Starts for Lutum_80:

(Start: 4 @45238 has 2 MA's), (Start: 5 @45247 has 1 MA's), (16, 45388), (26, 45487), (33, 45532), (41, 45616),

Gene: Periwinkle_86 Start: 47025, Stop: 47444, Start Num: 10

Candidate Starts for Periwinkle_86:

(1, 46803), (2, 46857), (3, 46875), (8, 47010), (Start: 10 @47025 has 8 MA's), (29, 47295), (31, 47316), (35, 47340),

Gene: Phabuloso_83 Start: 45995, Stop: 46411, Start Num: 4

Candidate Starts for Phabuloso_83:

(Start: 4 @45995 has 2 MA's), (Start: 5 @46004 has 1 MA's), (16, 46145), (26, 46244), (33, 46289), (41, 46373),

Gene: TinyDot_50 Start: 32374, Stop: 32745, Start Num: 10

Candidate Starts for TinyDot_50:

(9, 32365), (Start: 10 @32374 has 8 MA's), (23, 32572), (28, 32590),

Gene: Toniann_114 Start: 66005, Stop: 66385, Start Num: 11

Candidate Starts for Toniann_114:

(Start: 11 @66005 has 3 MA's), (22, 66212), (24, 66224), (27, 66233), (30, 66251), (32, 66272), (40, 66350), (42, 66371),

Gene: Whitney_76 Start: 45790, Stop: 46164, Start Num: 10

Candidate Starts for Whitney_76:

(3, 45640), (8, 45775), (Start: 10 @45790 has 8 MA's), (13, 45844), (26, 45997), (34, 46054),