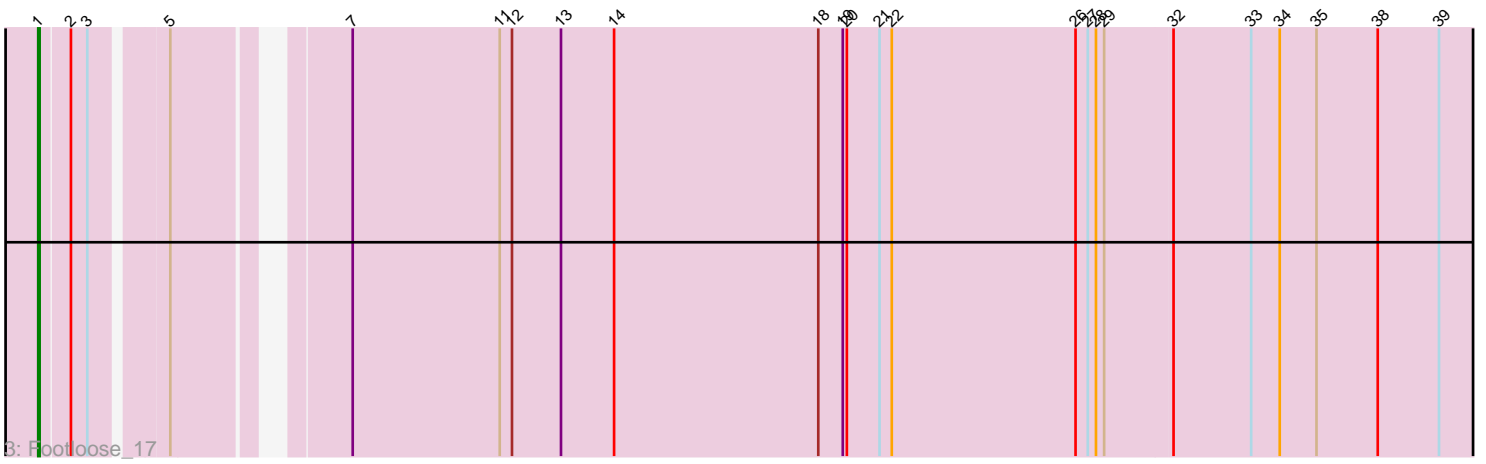
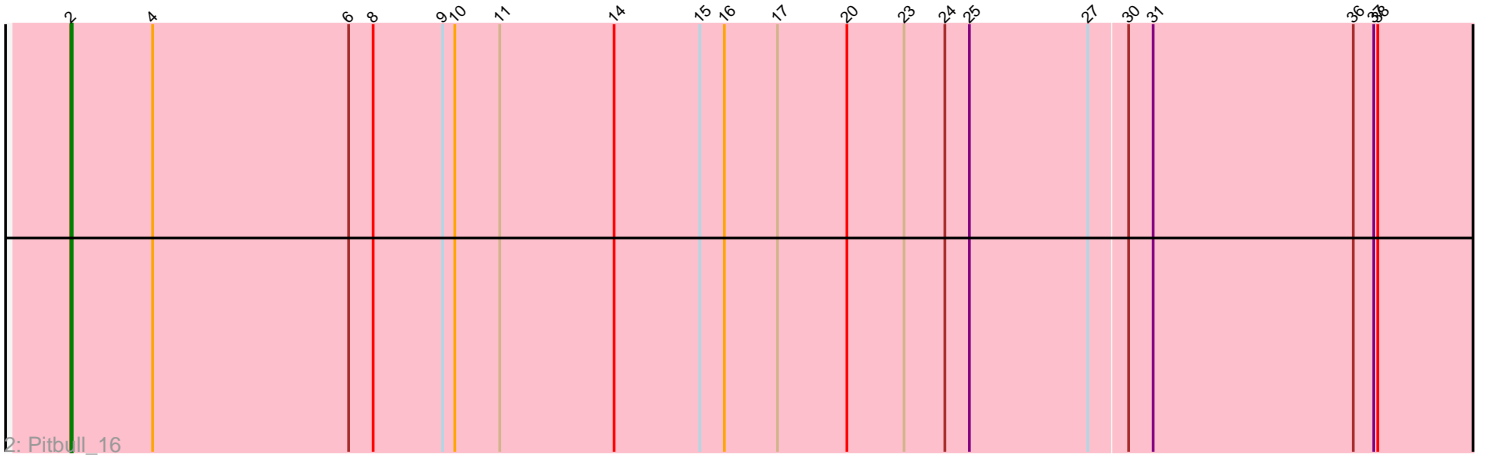
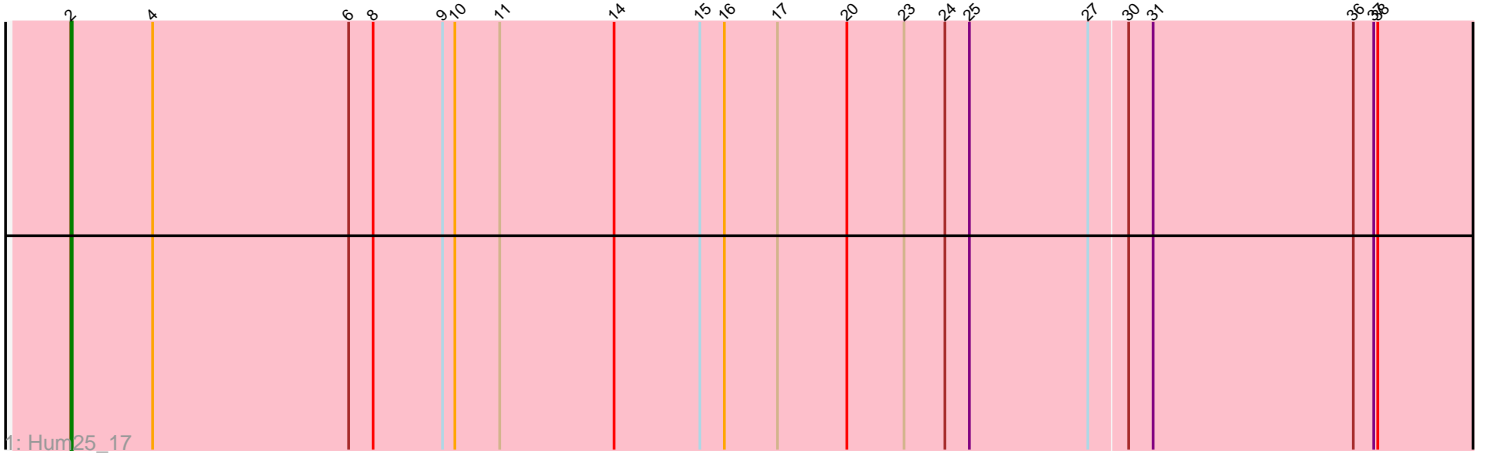


Zoomed Pham 197359



Note: Tracks are now grouped by subcluster and scaled. Switching in subcluster is indicated by changes in track color. Track scale is now set by default to display the region 30 bp upstream of start 1 to 30 bp downstream of the last possible start. If this default region is judged to be packed too tightly with annotated starts, the track will be further scaled to only show that region of the ORF with annotated starts. This action will be indicated by adding "Zoomed" to the title. For starts, yellow indicates the location of called starts comprised solely of Glimmer/GeneMark auto-annotations, green indicates the location of called starts with at least 1 manual gene annotation.

Pham 197359 Report

This analysis was run 12/09/24 on database version 580.

Pham number 197359 has 3 members, 0 are drafts.

Phages represented in each track:

- Track 1 : Hum25_17
- Track 2 : Pitbull_16
- Track 3 : Footloose_17

Summary of Final Annotations (See graph section above for start numbers):

The start number called the most often in the published annotations is 2, it was called in 2 of the 3 non-draft genes in the pham.

Genes that call this "Most Annotated" start:

- Hum25_17, Pitbull_16,

Genes that have the "Most Annotated" start but do not call it:

- Footloose_17,

Genes that do not have the "Most Annotated" start:

-

Summary by start number:

Start 1:

- Found in 1 of 3 (33.3%) of genes in pham
- Manual Annotations of this start: 1 of 3
- Called 100.0% of time when present
- Phage (with cluster) where this start called: Footloose_17 (singleton),

Start 2:

- Found in 3 of 3 (100.0%) of genes in pham
- Manual Annotations of this start: 2 of 3
- Called 66.7% of time when present
- Phage (with cluster) where this start called: Hum25_17 (FQ), Pitbull_16 (FQ),

Summary by clusters:

There are 2 clusters represented in this pham: FQ, singleton,

Info for manual annotations of cluster FQ:

•Start number 2 was manually annotated 2 times for cluster FQ.

Gene Information:

Gene: Footloose_17 Start: 10035, Stop: 12830, Start Num: 1

Candidate Starts for Footloose_17:

(Start: 1 @10035 has 1 MA's), (Start: 2 @10056 has 2 MA's), (3, 10068), (5, 10116), (7, 10218), (11, 10326), (12, 10335), (13, 10371), (14, 10410), (18, 10560), (19, 10578), (20, 10581), (21, 10605), (22, 10614), (26, 10749), (27, 10758), (28, 10764), (29, 10770), (32, 10818), (33, 10875), (34, 10896), (35, 10923), (38, 10968), (39, 11013), (41, 11064), (42, 11067), (44, 11118), (46, 11154), (49, 11220), (50, 11232), (51, 11235), (53, 11271), (54, 11274), (56, 11304), (57, 11319), (58, 11352), (60, 11388), (61, 11397), (65, 11454), (67, 11529), (68, 11556), (73, 11664), (74, 11667), (75, 11685), (79, 11784), (80, 11805), (81, 11826), (82, 11886), (83, 11889), (85, 11934), (87, 11961), (91, 11982), (92, 11994), (94, 12003), (98, 12057), (99, 12066), (100, 12099), (101, 12132), (102, 12138), (104, 12225), (106, 12246), (107, 12261), (108, 12267), (109, 12297), (110, 12309), (115, 12375), (116, 12396), (119, 12432), (120, 12447), (122, 12456), (123, 12459), (124, 12504), (125, 12564), (127, 12606), (128, 12639), (129, 12696), (130, 12702), (131, 12723), (132, 12729), (133, 12732), (134, 12759), (135, 12762),

Gene: Hum25_17 Start: 9592, Stop: 12558, Start Num: 2

Candidate Starts for Hum25_17:

(Start: 2 @9592 has 2 MA's), (4, 9652), (6, 9796), (8, 9814), (9, 9865), (10, 9874), (11, 9907), (14, 9991), (15, 10054), (16, 10072), (17, 10111), (20, 10162), (23, 10204), (24, 10234), (25, 10252), (27, 10339), (30, 10366), (31, 10384), (36, 10531), (37, 10546), (38, 10549), (40, 10633), (43, 10693), (45, 10732), (46, 10735), (47, 10774), (48, 10786), (52, 10834), (55, 10858), (59, 10963), (62, 10984), (63, 11020), (64, 11041), (66, 11062), (69, 11173), (70, 11233), (71, 11242), (72, 11251), (76, 11293), (77, 11314), (78, 11317), (81, 11437), (82, 11500), (84, 11551), (86, 11578), (88, 11596), (89, 11605), (90, 11608), (93, 11626), (94, 11629), (96, 11644), (97, 11650), (98, 11689), (103, 11815), (105, 11857), (110, 11941), (111, 11944), (112, 11962), (113, 11980), (114, 12001), (117, 12049), (118, 12052), (121, 12100), (126, 12238), (136, 12433), (137, 12535),

Gene: Pitbull_16 Start: 9222, Stop: 12188, Start Num: 2

Candidate Starts for Pitbull_16:

(Start: 2 @9222 has 2 MA's), (4, 9282), (6, 9426), (8, 9444), (9, 9495), (10, 9504), (11, 9537), (14, 9621), (15, 9684), (16, 9702), (17, 9741), (20, 9792), (23, 9834), (24, 9864), (25, 9882), (27, 9969), (30, 9996), (31, 10014), (36, 10161), (37, 10176), (38, 10179), (40, 10263), (43, 10323), (45, 10362), (46, 10365), (47, 10404), (48, 10416), (52, 10464), (55, 10488), (59, 10593), (62, 10614), (63, 10650), (64, 10671), (66, 10692), (69, 10803), (70, 10863), (71, 10872), (72, 10881), (77, 10944), (78, 10947), (81, 11067), (82, 11130), (84, 11181), (86, 11208), (88, 11226), (89, 11235), (90, 11238), (93, 11256), (94, 11259), (95, 11271), (96, 11274), (97, 11280), (98, 11319), (103, 11445), (105, 11487), (111, 11574), (112, 11592), (113, 11610), (114, 11631), (117, 11679), (118, 11682), (121, 11730), (126, 11868), (136, 12063), (137, 12165),