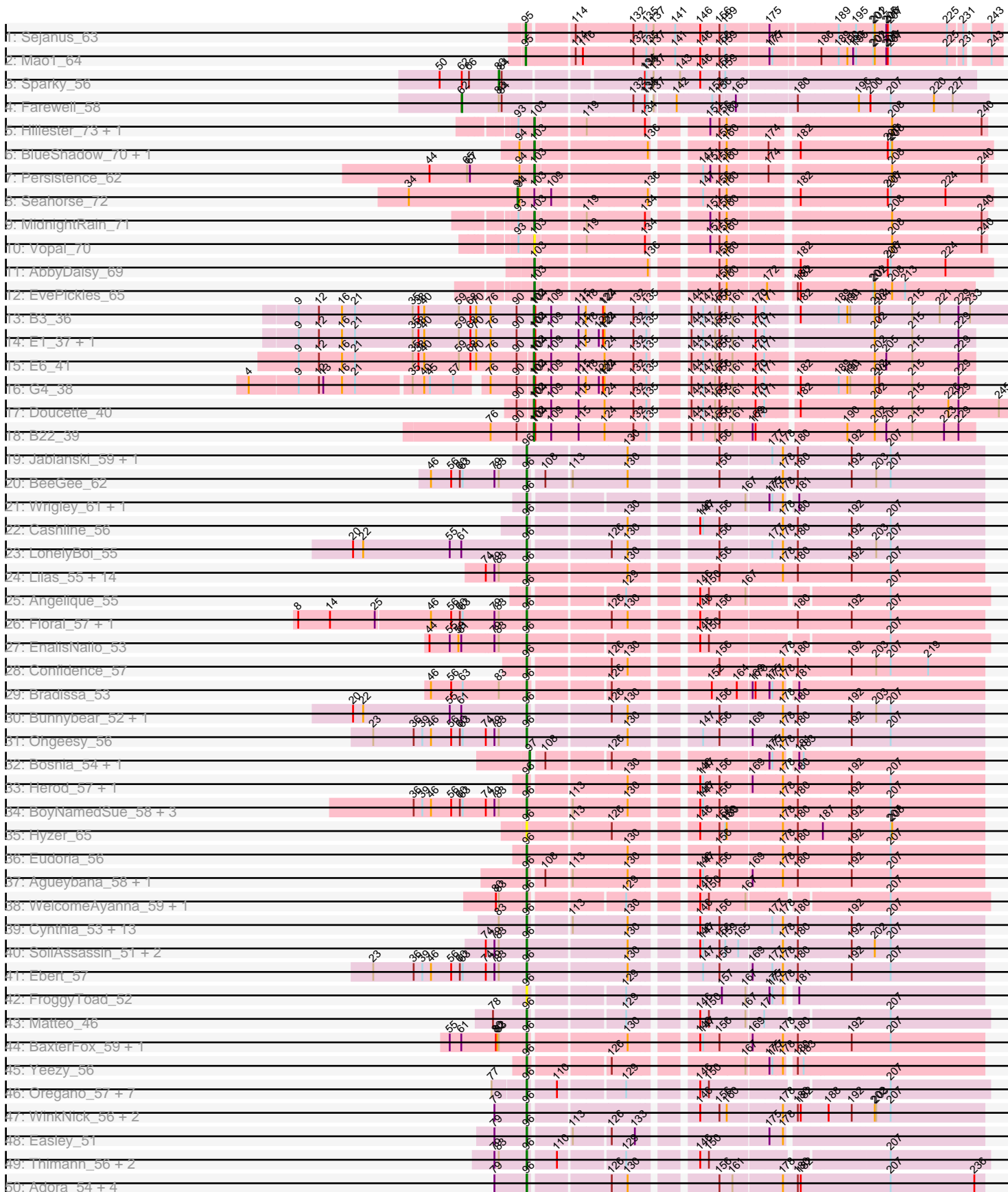
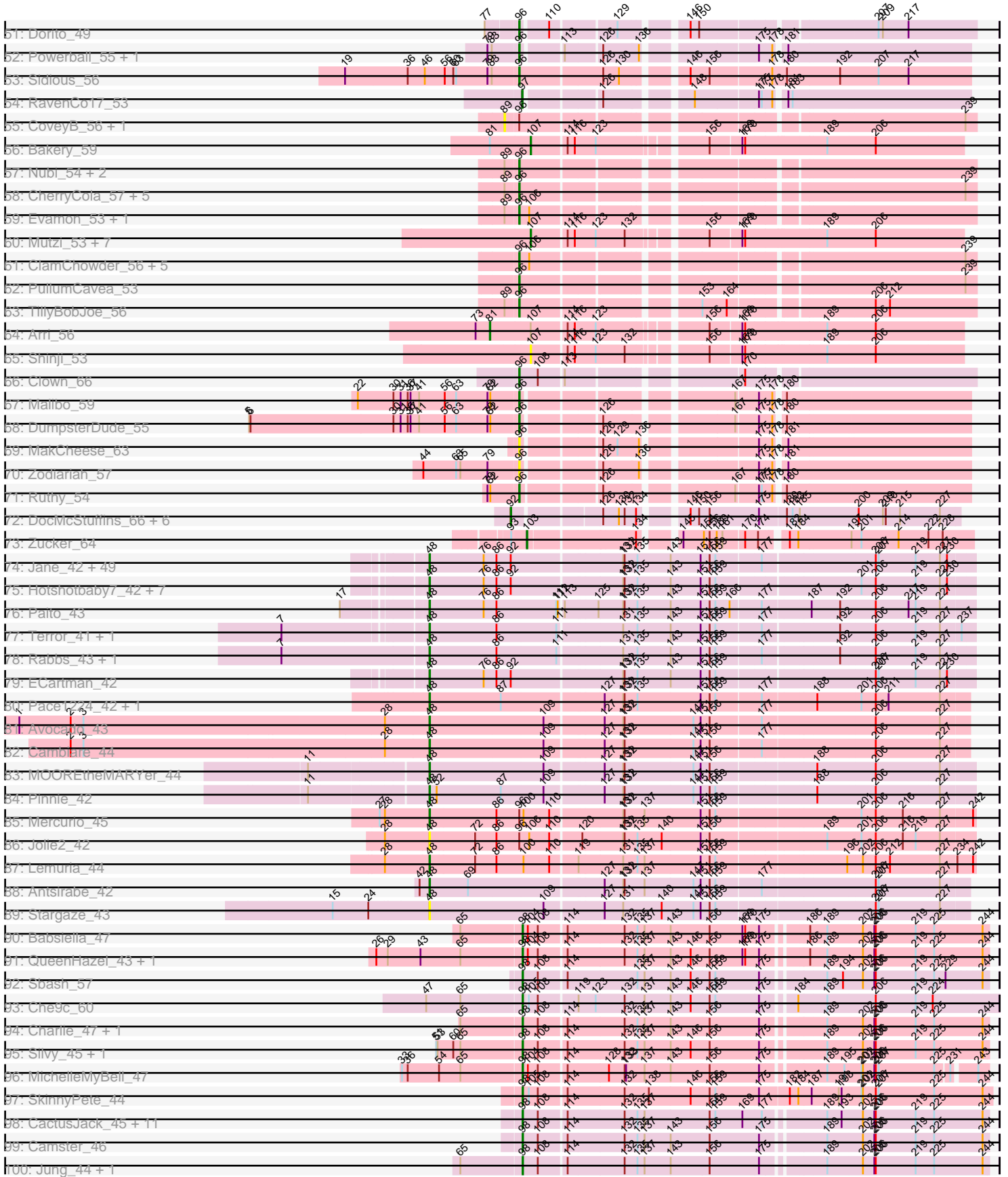


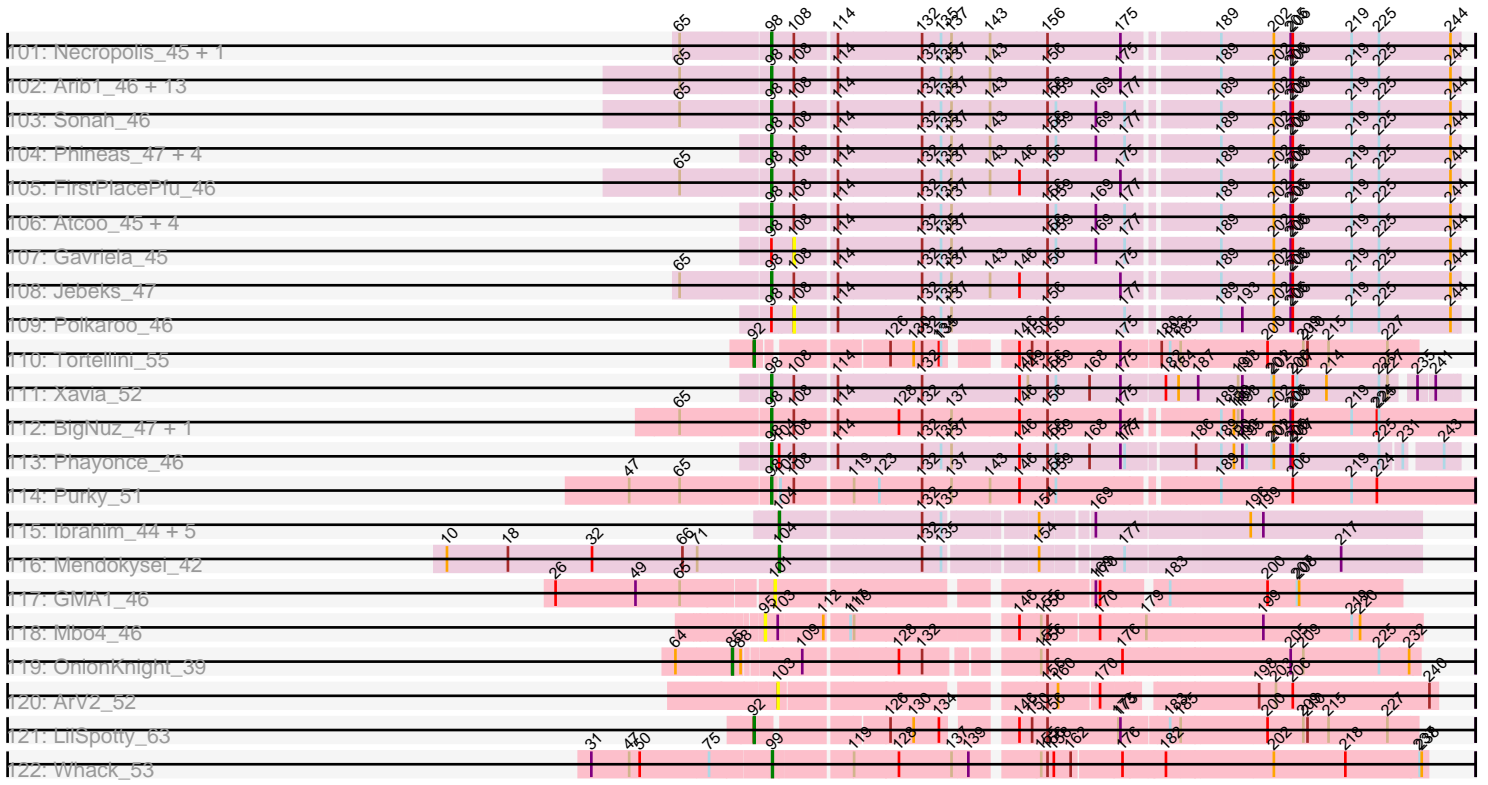
Pham 197793



Pham 197793



Pham 197793



Note: Tracks are now grouped by subcluster and scaled. Switching in subcluster is indicated by changes in track color. Track scale is now set by default to display the region 30 bp upstream of start 1 to 30 bp downstream of the last possible start. If this default region is judged to be packed too tightly with annotated starts, the track will be further scaled to only show that region of the ORF with annotated starts. This action will be indicated by adding "Zoomed" to the title. For starts, yellow indicates the location of called starts comprised solely of Glimmer/GeneMark auto-annotations, green indicates the location of called starts with at least 1 manual gene annotation.

Pham 197793 Report

This analysis was run 01/18/25 on database version 583.

Pham number 197793 has 311 members, 32 are drafts.

Phages represented in each track:

- Track 1 : Sejanus_63
- Track 2 : Mao1_64
- Track 3 : Sparky_56
- Track 4 : Farewell_58
- Track 5 : Hillester_73, RadFad_73
- Track 6 : BlueShadow_70, Anekin_71
- Track 7 : Persistence_62
- Track 8 : Seahorse_72
- Track 9 : MidnightRain_71
- Track 10 : Vopal_70
- Track 11 : AbbyDaisy_69
- Track 12 : EvePickles_65
- Track 13 : B3_36
- Track 14 : E1_37, Anatole_37
- Track 15 : E6_41
- Track 16 : G4_38
- Track 17 : Doucette_40
- Track 18 : B22_39
- Track 19 : Jablanski_59, Pytheas_59
- Track 20 : BeeGee_62
- Track 21 : Wrigley_61, Posh_59
- Track 22 : Cashline_56
- Track 23 : LonelyBoi_55
- Track 24 : Lilas_55, Antonio_56, Manasvini_57, Bialota_54, Kita_57, Suscepit_56, Polly_53, Trumpet_56, EdnaMode_50, Yeet412_51, Tayonia_56, Zirinka_53, Pickett_49, Zameen_56, Neobush_56
- Track 25 : Angelique_55
- Track 26 : Floral_57, Pollux_59
- Track 27 : EnalisNailo_53
- Track 28 : Confidence_57
- Track 29 : Bradissa_53
- Track 30 : Bunnybear_52, Maridalia_60
- Track 31 : Ohgeesy_56
- Track 32 : Bosnia_54, JCole_50
- Track 33 : Herod_57, Hugley_55
- Track 34 : BoyNamedSue_58, EMSquaredA_56, Marteena_55, AlumE_58
- Track 35 : Hyzer_65

- Track 36 : Eudoria_56
- Track 37 : Agueybana_58, Madeline_57
- Track 38 : WelcomeAyanna_59, ThankyouJordi_59
- Track 39 : Cynthia_53, Whiteclaw_53, Sahara_52, Haley23_53, Bjanes7_50, Savage_53, Nettuno_49, Lamberg_49, GemG_53, Gizermo_53, Mocha12_53, Clap_53, TuertoX_53, Sproutie_53
- Track 40 : SoilAssassin_51, LordFarquaad_53, Attis_51
- Track 41 : Ebert_57
- Track 42 : FroggyToad_52
- Track 43 : Matteo_46
- Track 44 : BaxterFox_59, PantheRoc_59
- Track 45 : Yeezy_56
- Track 46 : Oregano_57, Beenie_47, Samman98_54, Invectra_55, DobbysSock_46, Clark_53, MichaelScott_54, Annalisa_56
- Track 47 : WinkNick_56, Dolores_55, Sekhmet_55
- Track 48 : Easley_51
- Track 49 : Thimann_56, Mcklovin_53, Suerte_50
- Track 50 : Adora_54, Shlim410_55, Hortense_57, Twinkle_56, Howe_57
- Track 51 : Dorito_49
- Track 52 : Powerball_55, PhriskyACE_54
- Track 53 : Sidious_56
- Track 54 : RavenCo17_53
- Track 55 : CoveyB_56, Gezellig_56
- Track 56 : Bakery_59
- Track 57 : Nubi_54, Togo_53, SmokingBunny_54
- Track 58 : CherryCola_57, Valary_56, Halo3_54, Wizard_53, VanDeWege_57, RogerDodger_57
- Track 59 : Evamon_53, Salvador_53
- Track 60 : Mutzi_53, Portcullis_55, Fireball_56, Jambalaya_53, Savbucketdawg_53, Twister6_56, YungMoney_56, Danyall_55
- Track 61 : ClamChowder_56, Fugax_57, KimmyK_55, Barb_56, PinkCoffee_56, Phlop_53
- Track 62 : PullumCavea_53
- Track 63 : TillyBobJoe_56
- Track 64 : Arri_56
- Track 65 : Shinji_53
- Track 66 : Clown_66
- Track 67 : Malibo_59
- Track 68 : DumpsterDude_55
- Track 69 : MakCheese_63
- Track 70 : Zodiariah_57
- Track 71 : Ruthy_54
- Track 72 : DocMcStuffins_66, ChickenDinner_68, Misha28_64, Awesomesauce_66, Aloeri_68, Piper2020_67, TootsiePop_64
- Track 73 : Zucker_64
- Track 74 : Jane_42, Schiebel_42, JorRay_42, CLED96_42, Maliketh_42, Phish_42, Coleslaw_42, Hope_42, GoldenAsh_42, TinaBug_42, Barkley26_42, Angel_42, Avrafan_42, Zombie_42, Plagueis_42, Olga_42, Cedasite_42, BPs_42, Kareem_42, Darionha_42, BruceB_42, Crespo_42, Marmie_42, Renaissance_42, Gomashi_42, DMoney_42, Camri_42, Phreak_42, Annihilator_42, Mowgli_42, Peeb_42, AzulaCat_42, Remy19_42, Frosty24_42, Gideon_42, TomBrady_42, LouisV14_44, ZoMa_42, OctaviousRex_42, Cherrybomb426_42, Grizzly_42, BQuat_42, CassieYates_42, PinkYoshi_42, Halo_42, ShaboiShabazz_42, Wendigo_42,

Sweets_42, Kasen3_42, Sizemore_42

- Track 75 : Hotshotbaby7_42, Chance64_42, Liefie_42, Aroostook_42, Jolene_42, DNAlll_0041, Periodt_42, Jonghyun_41
- Track 76 : Paito_43
- Track 77 : Terror_41, Taheera_41
- Track 78 : Rabbs_43, Sneeze_43
- Track 79 : ECartman_42
- Track 80 : Pace1224_42, FlagStaff_42
- Track 81 : Avocado_43
- Track 82 : Cambiare_44
- Track 83 : MOOREtheMARYer_44
- Track 84 : Pinnie_42
- Track 85 : Mercurio_45
- Track 86 : Jolie2_42
- Track 87 : Lemuria_44
- Track 88 : Antsirabe_42
- Track 89 : Stargaze_43
- Track 90 : Babsiella_47
- Track 91 : QueenHazel_43, Xula_42
- Track 92 : Sbash_57
- Track 93 : Che9c_60
- Track 94 : Charlie_47, Journey_46
- Track 95 : Silvy_45, Aggie_45
- Track 96 : MichelleMyBell_47
- Track 97 : SkinnyPete_44
- Track 98 : CactusJack_45, Philonius_47, GreaseLightnin_46, Willsammy_44, Glaske_45, StevieRay_45, KilKor_45, Juniormint_46, Megiddo_45, Bunnies_46, Ksquared_45, Phalm_45
- Track 99 : Camster_46
- Track 100 : Jung_44, HC_45
- Track 101 : Necropolis_45, Dynamo_46
- Track 102 : Arib1_46, Venti_46, Malithi_46, Vidya_45, Techage_45, Zilizebeth_46, Kari_45, Langerak_46, Fishburne_45, Mangethe_46, Phegasus_46, Majeke_46, Bartholomew_45, Donovan_46
- Track 103 : Sonah_46
- Track 104 : Phineas_47, Pygmy_49, Bogie_49, Shipwreck_49, HUHilltop_47
- Track 105 : FirstPlacePfu_46
- Track 106 : Atcoo_45, Brusacoram_45, Xeno_47, Thespis_45, StressBall_45
- Track 107 : Gavriela_45
- Track 108 : Jebeks_47
- Track 109 : Polkaroo_46
- Track 110 : Tortellini_55
- Track 111 : Xavia_52
- Track 112 : BigNuz_47, Nazo_48
- Track 113 : Phayonce_46
- Track 114 : Purky_51
- Track 115 : Ibrahim_44, Bernal13_44, ZenTime222_43, Whitty_43, RonRayGun_44, Nairb_43
- Track 116 : Mendokysei_42
- Track 117 : GMA1_46
- Track 118 : Mbo4_46
- Track 119 : OnionKnight_39
- Track 120 : ArV2_52

- Track 121 : LilSpotty_63
- Track 122 : Whack_53

Summary of Final Annotations (See graph section above for start numbers):

The start number called the most often in the published annotations is 96, it was called in 106 of the 279 non-draft genes in the pham.

Genes that call this "Most Annotated" start:

- Adora_54, Agueybana_58, AlumE_58, Angelique_55, Annalisa_56, Antonio_56, Attis_51, Barb_56, BaxterFox_59, BeeGee_62, Beenie_47, Bialota_54, Bjaner7_50, BoyNamedSue_58, Bradissa_53, Bunnybear_52, Cashline_56, CherryCola_57, ClamChowder_56, Clap_53, Clark_53, Clown_66, Confidence_57, Cynthia_53, DobbysSock_46, Dolores_55, Dorito_49, DumpsterDude_55, EMSquaredA_56, Easley_51, Ebert_57, EdnaMode_50, EnalisNailo_53, Eudoria_56, Evamon_53, Floral_57, FroggyToad_52, Fugax_57, GemG_53, Gizermo_53, Haley23_53, Halo3_54, Herod_57, Hortense_57, Howe_57, Hugley_55, Hyzer_65, Invectra_55, Jablanski_59, KimmyK_55, Kita_57, Lamberg_49, Lilas_55, LonelyBoi_55, LordFarquaad_53, Madeline_57, MakCheese_63, Malibo_59, Manasvini_57, Maridalia_60, Marteena_55, Matteo_46, Mcklovin_53, MichaelScott_54, Mocha12_53, Neobush_56, Nettuno_49, Nubi_54, Ohgeesy_56, Oregano_57, PantheRoc_59, Phlop_53, PhriskyACE_54, Pickett_49, PinkCoffee_56, Pollux_59, Polly_53, Posh_59, Powerball_55, PullumCavea_53, Pytheas_59, RogerDodger_57, Ruthy_54, Sahara_52, Salvador_53, Samman98_54, Savage_53, Sekhmet_55, Shlim410_55, Sidious_56, SmokingBunny_54, SoilAssassin_51, Sproutie_53, Suerte_50, Suscepit_56, Tayonia_56, ThankyouJordi_59, Thimann_56, TillyBobJoe_56, Togo_53, Trumpet_56, TuertoX_53, Twinkle_56, Valary_56, VanDeWege_57, WelcomeAyanna_59, Whiteclaw_53, WinkNick_56, Wizard_53, Wrigley_61, Yeet412_51, Yeezy_56, Zameen_56, Zirinka_53, Zodiariah_57,

Genes that have the "Most Annotated" start but do not call it:

- CoveyB_56, Gezellig_56, Jolie2_42, Mercurio_45,

Genes that do not have the "Most Annotated" start:

- AbbyDaisy_69, Aggie_45, Aloeri_68, Anatole_37, Anekin_71, Angel_42, Annihilator_42, Antsirabe_42, ArV2_52, Arib1_46, Aroostook_42, Arri_56, Atcoo_45, Avocado_43, Avrafan_42, Awesomesauce_66, AzulaCat_42, B22_39, B3_36, BPs_42, BQuat_42, Babsiella_47, Bakery_59, Barkley26_42, Bartholomew_45, Bernal13_44, BigNuz_47, BlueShadow_70, Bogie_49, Bosnia_54, BruceB_42, Brusacoram_45, Bunnies_46, CLED96_42, CactusJack_45, Cambiare_44, Camri_42, Camster_46, CassieYates_42, Cedasite_42, Chance64_42, Charlie_47, Che9c_60, Cherrybomb426_42, ChickenDinner_68, Coleslaw_42, Crespo_42, DMoney_42, DNAIII_0041, Danyall_55, Darionha_42, DocMcStuffins_66, Donovan_46, Doucette_40, Dynamo_46, E1_37, E6_41, ECartman_42, EvePickles_65, Farewell_58, Fireball_56, FirstPlacePfu_46, Fishburne_45, FlagStaff_42, Frosty24_42, G4_38, GMA1_46, Gavriela_45, Gideon_42, Glaske_45, GoldenAsh_42, Gomashi_42, GreaseLightnin_46, Grizzly_42, HC_45, HUHilltop_47, Halo_42, Hillester_73, Hope_42, Hotshotbaby7_42, Ibrahim_44, JCole_50, Jambalaya_53, Jane_42, Jebeks_47, Jolene_42, Jonghyun_41, JorRay_42, Journey_46, Jung_44, Juniormint_46, Kareem_42, Kari_45, Kasen3_42, KilKor_45,

Ksquared_45, Langerak_46, Lemuria_44, Liefie_42, LilSpotty_63, LouisV14_44, MOOREtheMARYer_44, Majeke_46, Maliketh_42, Malithi_46, Mangethe_46, Mao1_64, Marmie_42, Mbo4_46, Megiddo_45, Mendokyse_42, MichelleMyBell_47, MidnightRain_71, Misha28_64, Mowgli_42, Mutzi_53, Nairb_43, Nazo_48, Necropolis_45, OctaviousRex_42, Olga_42, OnionKnight_39, Pace1224_42, Paito_43, Peeb_42, Periodt_42, Persistence_62, Phalm_45, Phayonce_46, Phegasus_46, Philonius_47, Phineas_47, Phish_42, Phreak_42, PinkYoshi_42, Pinnie_42, Piper2020_67, Plagueis_42, Polkaroo_46, Portcullis_55, Purky_51, Pygmy_49, QueenHazel_43, Rabbs_43, RadFad_73, RavenCo17_53, Remy19_42, Renaissance_42, RonRayGun_44, Savbucketdawg_53, Sbash_57, Schiebel_42, Seahorse_72, Sejanus_63, ShaboiShabazz_42, Shinji_53, Shipwreck_49, Silvy_45, Sizemore_42, SkinnyPete_44, Sneeze_43, Sonah_46, Sparky_56, Stargaze_43, StevieRay_45, StressBall_45, Sweets_42, Taheera_41, Techage_45, Terror_41, Thespis_45, TinaBug_42, TomBrady_42, TootsiePop_64, Tortellini_55, Twister6_56, Venti_46, Vidya_45, Vopal_70, Wendigo_42, Whack_53, Whitty_43, Willsammy_44, Xavia_52, Xeno_47, Xula_42, YungMoney_56, ZenTime222_43, Zilizabeth_46, ZoMa_42, Zombie_42, Zucker_64,

Summary by start number:

Start 48:

- Found in 75 of 311 (24.1%) of genes in pham
- Manual Annotations of this start: 68 of 279
- Called 100.0% of time when present
- Phage (with cluster) where this start called: Angel_42 (G1), Annihilator_42 (G1), Antsirabe_42 (G5), Aroostook_42 (G1), Avocado_43 (G2), Avrafan_42 (G1), AzulaCat_42 (G1), BPs_42 (G1), BQuat_42 (G1), Barkley26_42 (G1), BruceB_42 (G1), CLÉD96_42 (G1), Cambiare_44 (G2), Camri_42 (G1), CassieYates_42 (G1), Cedasite_42 (G1), Chance64_42 (G1), Cherrybomb426_42 (G1), Coleslaw_42 (G1), Crespo_42 (G1), DMoney_42 (G1), DNAIII_0041 (G1), Darionha_42 (G1), ECartman_42 (G1), FlagStaff_42 (G2), Frosty24_42 (G1), Gideon_42 (G1), GoldenAsh_42 (G1), Gomashi_42 (G1), Grizzly_42 (G1), Halo_42 (G1), Hope_42 (G1), Hotshotbaby7_42 (G1), Jane_42 (G1), Jolene_42 (G1), Jolie2_42 (G4), Jonghyun_41 (G1), JorRay_42 (G1), Kareem_42 (G1), Kasen3_42 (G1), Lemuria_44 (G4), Liefie_42 (G1), LouisV14_44 (G1), MOOREtheMARYer_44 (G3), Maliketh_42 (G1), Marmie_42 (G1), Mercurio_45 (G4), Mowgli_42 (G1), OctaviousRex_42 (G1), Olga_42 (G1), Pace1224_42 (G2), Paito_43 (G1), Peeb_42 (G1), Periodt_42 (G1), Phish_42 (G1), Phreak_42 (G1), PinkYoshi_42 (G1), Pinnie_42 (G3), Plagueis_42 (G1), Rabbs_43 (G1), Remy19_42 (G1), Renaissance_42 (G1), Schiebel_42 (G1), ShaboiShabazz_42 (G1), Sizemore_42 (G1), Sneeze_43 (G1), Stargaze_43 (G5), Sweets_42 (G1), Taheera_41 (G1), Terror_41 (G1), TinaBug_42 (G1), TomBrady_42 (G1), Wendigo_42 (G1), ZoMa_42 (G1), Zombie_42 (G1),

Start 62:

- Found in 2 of 311 (0.6%) of genes in pham
- Manual Annotations of this start: 1 of 279
- Called 50.0% of time when present
- Phage (with cluster) where this start called: Farewell_58 (AF),

Start 81:

- Found in 2 of 311 (0.6%) of genes in pham
- Manual Annotations of this start: 1 of 279
- Called 50.0% of time when present

- Phage (with cluster) where this start called: Arri_56 (DC1),

Start 83:

- Found in 55 of 311 (17.7%) of genes in pham
- Manual Annotations of this start: 1 of 279
- Called 1.8% of time when present
- Phage (with cluster) where this start called: Sparky_56 (AF),

Start 85:

- Found in 1 of 311 (0.3%) of genes in pham
- Manual Annotations of this start: 1 of 279
- Called 100.0% of time when present
- Phage (with cluster) where this start called: OnionKnight_39 (singleton),

Start 89:

- Found in 14 of 311 (4.5%) of genes in pham
- No Manual Annotations of this start.
- Called 14.3% of time when present
- Phage (with cluster) where this start called: CoveyB_56 (DC1), Gezellig_56 (DC1),

Start 91:

- Found in 1 of 311 (0.3%) of genes in pham
- Manual Annotations of this start: 1 of 279
- Called 100.0% of time when present
- Phage (with cluster) where this start called: Seahorse_72 (AY),

Start 92:

- Found in 68 of 311 (21.9%) of genes in pham
- Manual Annotations of this start: 7 of 279
- Called 13.2% of time when present
- Phage (with cluster) where this start called: Aloeri_68 (F1), Awesomesauce_66 (F1), ChickenDinner_68 (F1), DocMcStuffins_66 (F1), LilSpotty_63 (singleton), Misha28_64 (F1), Piper2020_67 (F1), TootsiePop_64 (F1), Tortellini_55 (P2),

Start 95:

- Found in 3 of 311 (1.0%) of genes in pham
- Manual Annotations of this start: 2 of 279
- Called 100.0% of time when present
- Phage (with cluster) where this start called: Mao1_64 (AD), Mbo4_46 (singleton), Sejanus_63 (AD),

Start 96:

- Found in 119 of 311 (38.3%) of genes in pham
- Manual Annotations of this start: 106 of 279
- Called 96.6% of time when present
- Phage (with cluster) where this start called: Adora_54 (CZ4), Agueybana_58 (CZ1), AlumE_58 (CZ1), Angelique_55 (CY1), Annalisa_56 (CZ4), Antonio_56 (CZ1), Attis_51 (CZ2), Barb_56 (DC1), BaxterFox_59 (CZ3), BeeGee_62 (CY), Beenie_47 (CZ4), Bialota_54 (CZ1), Bjaner7_50 (CZ2), BoyNamedSue_58 (CZ1), Bradissa_53 (CY1), Bunnybear_52 (CZ), Cashline_56 (CY), CherryCola_57 (DC1), ClamChowder_56 (DC1), Clap_53 (CZ2), Clark_53 (CZ4), Clown_66 (DC2), Confidence_57 (CY1), Cynthia_53 (CZ2), DobbysSock_46 (CZ4), Dolores_55 (CZ4), Dorito_49 (CZ4), DumpsterDude_55 (DW), EMSquaredA_56 (CY1), Easley_51 (CZ4),

Ebert_57 (CZ2), EdnaMode_50 (CZ2), EnalisNailo_53 (CY1), Eudoria_56 (CZ1), Evamon_53 (DC1), Floral_57 (CY1), FroggyToad_52 (CZ2), Fugax_57 (DC1), GemG_53 (CZ2), Gizermo_53 (CZ2), Haley23_53 (CZ2), Halo3_54 (DC1), Herod_57 (CZ1), Hortense_57 (CZ4), Howe_57 (CZ4), Hugley_55 (CZ1), Hyzer_65 (CZ1), Invectra_55 (CZ4), Jablanski_59 (CY), KimmyK_55 (DC1), Kita_57 (CZ1), Lamberg_49 (CZ2), Lilas_55 (CY1), LonelyBoi_55 (CY), LordFarquaad_53 (CZ2), Madeline_57 (CZ1), MakCheese_63 (DW), Malibo_59 (DW), Manasvini_57 (CZ1), Maridalia_60 (CZ1), Marteena_55 (CY1), Matteo_46 (CZ2), Mcklovin_53 (CZ4), MichaelScott_54 (CZ4), Mocha12_53 (CZ2), Neobush_56 (CZ1), Nettuno_49 (CZ2), Nubi_54 (DC1), Ohgeesy_56 (CZ), Oregano_57 (CZ4), PantheRoc_59 (CZ3), Phlop_53 (DC1), PhriskyACE_54 (CZ4), Pickett_49 (CZ2), PinkCoffee_56 (DC1), Pollux_59 (CY1), Polly_53 (CZ1), Posh_59 (CY), Powerball_55 (CZ4), PullumCavea_53 (DC1), Pytheas_59 (CY), RogerDodger_57 (DC1), Ruthy_54 (DW), Sahara_52 (CZ2), Salvador_53 (DC1), Samman98_54 (CZ4), Savage_53 (CZ2), Sekhmet_55 (CZ4), Shlim410_55 (CZ4), Sidious_56 (CZ7), SmokingBunny_54 (DC1), SoilAssassin_51 (CZ2), Sproutie_53 (CZ2), Suerte_50 (CZ4), Suscepit_56 (CZ1), Tayonia_56 (CZ1), ThankyouJordi_59 (CZ1), Thimann_56 (CZ4), TillyBobJoe_56 (DC1), Togo_53 (DC1), Trumpet_56 (CZ1), TuertoX_53 (CZ2), Twinkle_56 (CZ4), Valary_56 (DC1), VanDeWege_57 (DC1), WelcomeAyanna_59 (CZ1), Whiteclaw_53 (CZ2), WinkNick_56 (CZ4), Wizard_53 (DC1), Wrigley_61 (CY), Yeet412_51 (CZ2), Yeezy_56 (CZ3), Zameen_56 (CZ1), Zirinka_53 (CZ1), Zodiariah_57 (DW),

Start 97:

- Found in 3 of 311 (1.0%) of genes in pham
- Manual Annotations of this start: 2 of 279
- Called 100.0% of time when present
- Phage (with cluster) where this start called: Bosnia_54 (CZ1), JCole_50 (CZ2), RavenCo17_53 (CZ8),

Start 98:

- Found in 62 of 311 (19.9%) of genes in pham
- Manual Annotations of this start: 58 of 279
- Called 96.8% of time when present
- Phage (with cluster) where this start called: Aggie_45 (N), Arib1_46 (P1), Atcoo_45 (P1), Babsiella_47 (I1), Bartholomew_45 (P1), BigNuz_47 (P4), Bogie_49 (P1), Brusacoram_45 (P1), Bunnies_46 (P1), CactusJack_45 (P1), Camster_46 (P1), Charlie_47 (N), Che9c_60 (I2), Donovan_46 (P1), Dynamo_46 (P1), FirstPlacePfu_46 (P1), Fishburne_45 (P1), Glaske_45 (P1), GreaseLightnin_46 (P1), HC_45 (I1), HUHilltop_47 (P1), Jebeks_47 (P1), Journey_46 (N), Jung_44 (P1), Juniormint_46 (P1), Kari_45 (P1), KilKor_45 (P1), Ksquared_45 (P1), Langerak_46 (P1), Majeke_46 (P1), Malithi_46 (P1), Mangethe_46 (P1), Megiddo_45 (P1), MichelleMyBell_47 (N), Nazo_48 (P4), Necropolis_45 (P1), Phalm_45 (P1), Phayonce_46 (P5), Phegasus_46 (P1), Philonius_47 (N), Phineas_47 (P1), Purky_51 (P6), Pygmy_49 (P1), QueenHazel_43 (I1), Sbash_57 (I2), Shipwreck_49 (P1), Silvy_45 (N), SkinnyPete_44 (N), Sonah_46 (P1), StevieRay_45 (P1), StressBall_45 (P1), Techage_45 (P1), Thespis_45 (P1), Venti_46 (P1), Vidya_45 (P1), Willsammy_44 (P1), Xavia_52 (P3), Xeno_47 (N), Xula_42 (I1), Zilizebeth_46 (P1),

Start 99:

- Found in 1 of 311 (0.3%) of genes in pham
- Manual Annotations of this start: 1 of 279
- Called 100.0% of time when present

- Phage (with cluster) where this start called: Whack_53 (singleton),

Start 101:

- Found in 1 of 311 (0.3%) of genes in pham
- No Manual Annotations of this start.
- Called 100.0% of time when present
- Phage (with cluster) where this start called: GMA1_46 (singleton),

Start 102:

- Found in 7 of 311 (2.3%) of genes in pham
- Manual Annotations of this start: 7 of 279
- Called 100.0% of time when present
- Phage (with cluster) where this start called: Anatole_37 (BV), B22_39 (BW), B3_36 (BV), Doucette_40 (BW), E1_37 (BV), E6_41 (BW), G4_38 (BW),

Start 103:

- Found in 13 of 311 (4.2%) of genes in pham
- Manual Annotations of this start: 7 of 279
- Called 84.6% of time when present
- Phage (with cluster) where this start called: AbbyDaisy_69 (AY), Anekin_71 (AY), ArV2_52 (singleton), BlueShadow_70 (AY), EvePickles_65 (AY), Hillester_73 (AY), MidnightRain_71 (AY), Persistence_62 (AY), RadFad_73 (AY), Vopal_70 (AY), Zucker_64 (FN),

Start 104:

- Found in 19 of 311 (6.1%) of genes in pham
- Manual Annotations of this start: 7 of 279
- Called 36.8% of time when present
- Phage (with cluster) where this start called: Bernal13_44 (T), Ibrahim_44 (T), Mendokyse_42 (T), Nairb_43 (T), RonRayGun_44 (T), Whitty_43 (T), ZenTime222_43 (T),

Start 107:

- Found in 11 of 311 (3.5%) of genes in pham
- Manual Annotations of this start: 9 of 279
- Called 90.9% of time when present
- Phage (with cluster) where this start called: Bakery_59 (DC1), Danyall_55 (DC1), Fireball_56 (DC1), Jambalaya_53 (DC1), Mutzi_53 (DC1), Portcullis_55 (DC1), Savbucketdawg_53 (DC1), Shinji_53 (DC1), Twister6_56 (DC1), YungMoney_56 (DC1),

Start 108:

- Found in 68 of 311 (21.9%) of genes in pham
- No Manual Annotations of this start.
- Called 2.9% of time when present
- Phage (with cluster) where this start called: Gavriela_45 (P1), Polkaroo_46 (P1),

Summary by clusters:

There are 35 clusters represented in this pham: CZ8, I2, CZ2, CZ3, CZ1, singleton, CZ4, BV, BW, DW, FN, G5, G4, G3, G2, G1, I1, P5, P2, P3, CY1, P1, P6, AD, P4, AF, N, CZ, CY, T, AY, DC2, DC1, CZ7, F1,

Info for manual annotations of cluster AD:

- Start number 95 was manually annotated 2 times for cluster AD.

Info for manual annotations of cluster AF:

- Start number 62 was manually annotated 1 time for cluster AF.
- Start number 83 was manually annotated 1 time for cluster AF.

Info for manual annotations of cluster AY:

- Start number 91 was manually annotated 1 time for cluster AY.
- Start number 103 was manually annotated 6 times for cluster AY.

Info for manual annotations of cluster BV:

- Start number 102 was manually annotated 3 times for cluster BV.

Info for manual annotations of cluster BW:

- Start number 102 was manually annotated 4 times for cluster BW.

Info for manual annotations of cluster CY:

- Start number 96 was manually annotated 7 times for cluster CY.

Info for manual annotations of cluster CY1:

- Start number 96 was manually annotated 9 times for cluster CY1.

Info for manual annotations of cluster CZ:

- Start number 96 was manually annotated 2 times for cluster CZ.

Info for manual annotations of cluster CZ1:

- Start number 96 was manually annotated 20 times for cluster CZ1.
- Start number 97 was manually annotated 1 time for cluster CZ1.

Info for manual annotations of cluster CZ2:

- Start number 96 was manually annotated 22 times for cluster CZ2.

Info for manual annotations of cluster CZ3:

- Start number 96 was manually annotated 3 times for cluster CZ3.

Info for manual annotations of cluster CZ4:

- Start number 96 was manually annotated 20 times for cluster CZ4.

Info for manual annotations of cluster CZ7:

- Start number 96 was manually annotated 1 time for cluster CZ7.

Info for manual annotations of cluster CZ8:

- Start number 97 was manually annotated 1 time for cluster CZ8.

Info for manual annotations of cluster DC1:

- Start number 81 was manually annotated 1 time for cluster DC1.
- Start number 96 was manually annotated 18 times for cluster DC1.
- Start number 107 was manually annotated 9 times for cluster DC1.

Info for manual annotations of cluster DC2:

- Start number 96 was manually annotated 1 time for cluster DC2.

Info for manual annotations of cluster DW:

- Start number 96 was manually annotated 3 times for cluster DW.

Info for manual annotations of cluster F1:

- Start number 92 was manually annotated 5 times for cluster F1.

Info for manual annotations of cluster FN:

- Start number 103 was manually annotated 1 time for cluster FN.

Info for manual annotations of cluster G1:

- Start number 48 was manually annotated 60 times for cluster G1.

Info for manual annotations of cluster G2:

- Start number 48 was manually annotated 3 times for cluster G2.

Info for manual annotations of cluster G3:

- Start number 48 was manually annotated 2 times for cluster G3.

Info for manual annotations of cluster G4:

- Start number 48 was manually annotated 2 times for cluster G4.

Info for manual annotations of cluster G5:

- Start number 48 was manually annotated 1 time for cluster G5.

Info for manual annotations of cluster I1:

- Start number 98 was manually annotated 4 times for cluster I1.

Info for manual annotations of cluster I2:

- Start number 98 was manually annotated 2 times for cluster I2.

Info for manual annotations of cluster N:

- Start number 98 was manually annotated 8 times for cluster N.

Info for manual annotations of cluster P1:

- Start number 98 was manually annotated 39 times for cluster P1.

Info for manual annotations of cluster P2:

- Start number 92 was manually annotated 1 time for cluster P2.

Info for manual annotations of cluster P3:

- Start number 98 was manually annotated 1 time for cluster P3.

Info for manual annotations of cluster P4:

- Start number 98 was manually annotated 2 times for cluster P4.

Info for manual annotations of cluster P5:

- Start number 98 was manually annotated 1 time for cluster P5.

Info for manual annotations of cluster P6:

- Start number 98 was manually annotated 1 time for cluster P6.

Info for manual annotations of cluster T:

- Start number 104 was manually annotated 7 times for cluster T.

Gene Information:

Gene: AbbyDaisy_69 Start: 36824, Stop: 37663, Start Num: 103

Candidate Starts for AbbyDaisy_69:

(Start: 103 @36824 has 7 MA's), (136, 37034), (156, 37145), (160, 37160), (182, 37280), (206, 37448), (207, 37454), (224, 37565),

Gene: Adora_54 Start: 39285, Stop: 40148, Start Num: 96

Candidate Starts for Adora_54:

(79, 39222), (Start: 96 @39285 has 106 MA's), (126, 39435), (130, 39468), (156, 39618), (161, 39645), (178, 39741), (180, 39768), (182, 39774), (207, 39954), (236, 40128),

Gene: Aggie_45 Start: 31200, Stop: 32129, Start Num: 98

Candidate Starts for Aggie_45:

(51, 31029), (53, 31032), (60, 31065), (65, 31080), (Start: 98 @31200 has 58 MA's), (108, 31230), (114, 31284), (132, 31401), (135, 31428), (137, 31443), (143, 31497), (146, 31539), (156, 31578), (175, 31680), (189, 31794), (202, 31866), (205, 31890), (206, 31893), (219, 31977), (225, 32016), (244, 32118),

Gene: Agueybana_58 Start: 40560, Stop: 41423, Start Num: 96

Candidate Starts for Agueybana_58:

(Start: 96 @40560 has 106 MA's), (108, 40584), (113, 40632), (130, 40743), (146, 40854), (147, 40860), (156, 40893), (169, 40956), (178, 41016), (180, 41043), (192, 41151), (207, 41229),

Gene: Aloeri_68 Start: 41043, Stop: 41897, Start Num: 92

Candidate Starts for Aloeri_68:

(Start: 92 @41043 has 7 MA's), (126, 41205), (130, 41238), (132, 41250), (134, 41274), (146, 41349), (150, 41367), (156, 41388), (175, 41490), (180, 41541), (183, 41553), (185, 41568), (200, 41685), (209, 41736), (210, 41742), (215, 41772), (227, 41856),

Gene: AlumE_58 Start: 40324, Stop: 41199, Start Num: 96

Candidate Starts for AlumE_58:

(36, 40093), (39, 40111), (46, 40129), (56, 40171), (60, 40189), (63, 40195), (74, 40243), (79, 40261), (Start: 83 @40270 has 1 MA's), (Start: 96 @40324 has 106 MA's), (113, 40408), (130, 40519), (146, 40630), (147, 40636), (156, 40669), (178, 40792), (180, 40819), (192, 40927), (207, 41005),

Gene: Anatole_37 Start: 26633, Stop: 27484, Start Num: 102

Candidate Starts for Anatole_37:

(9, 26144), (12, 26186), (16, 26234), (21, 26261), (35, 26381), (38, 26393), (40, 26405), (59, 26477), (68, 26501), (70, 26513), (76, 26543), (90, 26597), (Start: 102 @26633 has 7 MA's), (Start: 104 @26636 has 7 MA's), (109, 26669), (115, 26726), (118, 26741), (121, 26768), (122, 26777), (124, 26780), (132, 26840), (135, 26867), (144, 26921), (147, 26945), (155, 26969), (156, 26978), (161, 27005), (170, 27053), (171, 27071), (202, 27278), (215, 27356), (229, 27452),

Gene: Anekin_71 Start: 36816, Stop: 37655, Start Num: 103

Candidate Starts for Anekin_71:

(94, 36792), (Start: 103 @36816 has 7 MA's), (136, 37026), (156, 37137), (160, 37152), (174, 37230), (182, 37272), (206, 37440), (207, 37446), (208, 37449),

Gene: Angel_42 Start: 31892, Stop: 32977, Start Num: 48

Candidate Starts for Angel_42:

(Start: 48 @31892 has 68 MA's), (76, 32006), (86, 32030), (Start: 92 @32060 has 7 MA's), (131, 32279), (132, 32282), (135, 32309), (143, 32378), (151, 32441), (156, 32459), (159, 32471), (177, 32561), (206, 32777), (207, 32783), (219, 32861), (227, 32909), (230, 32924),

Gene: Angelique_55 Start: 40522, Stop: 41361, Start Num: 96

Candidate Starts for Angelique_55:

(Start: 96 @40522 has 106 MA's), (129, 40693), (146, 40807), (150, 40825), (167, 40900), (207, 41155),

Gene: Annalisa_56 Start: 36687, Stop: 37526, Start Num: 96

Candidate Starts for Annalisa_56:

(77, 36624), (Start: 96 @36687 has 106 MA's), (110, 36735), (129, 36858), (146, 36972), (150, 36990), (207, 37320),

Gene: Annihilator_42 Start: 31898, Stop: 32983, Start Num: 48

Candidate Starts for Annihilator_42:

(Start: 48 @31898 has 68 MA's), (76, 32012), (86, 32036), (Start: 92 @32066 has 7 MA's), (131, 32285), (132, 32288), (135, 32315), (143, 32384), (151, 32447), (156, 32465), (159, 32477), (177, 32567), (206, 32783), (207, 32789), (219, 32867), (227, 32915), (230, 32930),

Gene: Antonio_56 Start: 38840, Stop: 39715, Start Num: 96

Candidate Starts for Antonio_56:

(74, 38759), (79, 38777), (Start: 83 @38786 has 1 MA's), (Start: 96 @38840 has 106 MA's), (130, 39035), (156, 39185), (178, 39308), (180, 39335), (192, 39443), (207, 39521),

Gene: Antsirabe_42 Start: 32945, Stop: 34024, Start Num: 48

Candidate Starts for Antsirabe_42:

(42, 32927), (Start: 48 @32945 has 68 MA's), (69, 33026), (127, 33293), (131, 33332), (132, 33335), (137, 33377), (147, 33479), (151, 33494), (156, 33512), (159, 33524), (177, 33614), (206, 33833), (207, 33839), (227, 33965),

Gene: ArV2_52 Start: 29030, Stop: 29857, Start Num: 103

Candidate Starts for ArV2_52:

(Start: 103 @29030 has 7 MA's), (156, 29351), (160, 29366), (170, 29420), (198, 29609), (203, 29630), (206, 29654), (240, 29846),

Gene: Arib1_46 Start: 31623, Stop: 32552, Start Num: 98

Candidate Starts for Arib1_46:

(65, 31503), (Start: 98 @31623 has 58 MA's), (108, 31653), (114, 31707), (132, 31824), (135, 31851), (137, 31866), (143, 31920), (156, 32001), (175, 32103), (189, 32217), (202, 32289), (205, 32313), (206, 32316), (219, 32400), (225, 32439), (244, 32541),

Gene: Aroostook_42 Start: 31907, Stop: 32992, Start Num: 48

Candidate Starts for Aroostook_42:

(Start: 48 @31907 has 68 MA's), (76, 32021), (86, 32045), (Start: 92 @32075 has 7 MA's), (131, 32294), (132, 32297), (135, 32324), (143, 32393), (151, 32456), (156, 32474), (159, 32486), (201, 32762), (206, 32792), (219, 32876), (227, 32924), (230, 32939),

Gene: Arri_56 Start: 40968, Stop: 41882, Start Num: 81

Candidate Starts for Arri_56:

(73, 40938), (Start: 81 @40968 has 1 MA's), (Start: 107 @41049 has 9 MA's), (114, 41118), (116, 41133), (123, 41175), (156, 41373), (169, 41436), (170, 41442), (189, 41601), (206, 41700),

Gene: Atcoo_45 Start: 32107, Stop: 33033, Start Num: 98

Candidate Starts for Atcoo_45:

(Start: 98 @32107 has 58 MA's), (108, 32134), (114, 32188), (132, 32305), (135, 32332), (137, 32347), (156, 32482), (159, 32494), (169, 32551), (177, 32590), (189, 32698), (202, 32770), (205, 32794), (206, 32797), (219, 32881), (225, 32920), (244, 33022),

Gene: Attis_51 Start: 35973, Stop: 36848, Start Num: 96

Candidate Starts for Attis_51:

(74, 35892), (79, 35910), (Start: 83 @35919 has 1 MA's), (Start: 96 @35973 has 106 MA's), (130, 36168), (146, 36279), (147, 36285), (156, 36318), (159, 36330), (165, 36357), (178, 36441), (180, 36468), (192, 36576), (202, 36621), (207, 36654),

Gene: Avocado_43 Start: 33992, Stop: 35071, Start Num: 48

Candidate Starts for Avocado_43:

(1, 33143), (2, 33251), (3, 33278), (28, 33899), (Start: 48 @33992 has 68 MA's), (109, 34226), (127, 34340), (131, 34379), (132, 34382), (147, 34526), (151, 34541), (156, 34559), (177, 34661), (206, 34880), (227, 35012),

Gene: Avrafan_42 Start: 31907, Stop: 32992, Start Num: 48

Candidate Starts for Avrafan_42:

(Start: 48 @31907 has 68 MA's), (76, 32021), (86, 32045), (Start: 92 @32075 has 7 MA's), (131, 32294), (132, 32297), (135, 32324), (143, 32393), (151, 32456), (156, 32474), (159, 32486), (177, 32576), (206, 32792), (207, 32798), (219, 32876), (227, 32924), (230, 32939),

Gene: Awesomesauce_66 Start: 40126, Stop: 40980, Start Num: 92

Candidate Starts for Awesomesauce_66:

(Start: 92 @40126 has 7 MA's), (126, 40288), (130, 40321), (132, 40333), (134, 40357), (146, 40432), (150, 40450), (156, 40471), (175, 40573), (180, 40624), (183, 40636), (185, 40651), (200, 40768), (209, 40819), (210, 40825), (215, 40855), (227, 40939),

Gene: AzulaCat_42 Start: 31907, Stop: 32992, Start Num: 48

Candidate Starts for AzulaCat_42:

(Start: 48 @31907 has 68 MA's), (76, 32021), (86, 32045), (Start: 92 @32075 has 7 MA's), (131, 32294), (132, 32297), (135, 32324), (143, 32393), (151, 32456), (156, 32474), (159, 32486), (177, 32576), (206, 32792), (207, 32798), (219, 32876), (227, 32924), (230, 32939),

Gene: B22_39 Start: 26398, Stop: 27249, Start Num: 102

Candidate Starts for B22_39:

(76, 26314), (90, 26368), (Start: 102 @26398 has 7 MA's), (Start: 104 @26401 has 7 MA's), (109, 26434), (115, 26491), (124, 26545), (132, 26605), (135, 26632), (144, 26686), (147, 26710), (155, 26734), (156, 26743), (161, 26770), (169, 26812), (170, 26818), (190, 26986), (202, 27043), (205, 27067), (215, 27121), (223, 27187), (229, 27217),

Gene: B3_36 Start: 25890, Stop: 26810, Start Num: 102

Candidate Starts for B3_36:

(9, 25401), (12, 25443), (16, 25491), (21, 25518), (35, 25638), (38, 25650), (40, 25662), (59, 25734), (68, 25758), (70, 25770), (76, 25800), (90, 25854), (Start: 102 @25890 has 7 MA's), (Start: 104 @25893 has 7 MA's), (109, 25926), (115, 25983), (118, 25998), (122, 26034), (124, 26037), (132, 26097), (135, 26124), (144, 26178), (147, 26202), (155, 26226), (156, 26235), (161, 26262), (170, 26310), (171, 26328), (182, 26385), (189, 26460), (190, 26478), (191, 26484), (202, 26535), (204, 26544), (215, 26613), (221, 26670), (229, 26709), (233, 26733),

Gene: BPs_42 Start: 31907, Stop: 32992, Start Num: 48

Candidate Starts for BPs_42:

(Start: 48 @31907 has 68 MA's), (76, 32021), (86, 32045), (Start: 92 @32075 has 7 MA's), (131, 32294), (132, 32297), (135, 32324), (143, 32393), (151, 32456), (156, 32474), (159, 32486), (177, 32576), (206, 32792), (207, 32798), (219, 32876), (227, 32924), (230, 32939),

Gene: BQuat_42 Start: 31898, Stop: 32983, Start Num: 48

Candidate Starts for BQuat_42:

(Start: 48 @31898 has 68 MA's), (76, 32012), (86, 32036), (Start: 92 @32066 has 7 MA's), (131, 32285), (132, 32288), (135, 32315), (143, 32384), (151, 32447), (156, 32465), (159, 32477), (177, 32567), (206, 32783), (207, 32789), (219, 32867), (227, 32915), (230, 32930),

Gene: Babsiella_47 Start: 32479, Stop: 33405, Start Num: 98

Candidate Starts for Babsiella_47:

(65, 32359), (Start: 98 @32479 has 58 MA's), (Start: 104 @32488 has 7 MA's), (108, 32506), (114, 32560), (132, 32677), (135, 32704), (137, 32719), (143, 32773), (156, 32854), (169, 32923), (170, 32929), (175, 32956), (186, 33037), (189, 33070), (202, 33142), (205, 33166), (206, 33169), (219, 33253), (225, 33292), (244, 33394),

Gene: Bakery_59 Start: 42229, Stop: 43062, Start Num: 107

Candidate Starts for Bakery_59:

(Start: 81 @42148 has 1 MA's), (Start: 107 @42229 has 9 MA's), (114, 42298), (116, 42313), (123, 42355), (156, 42553), (169, 42616), (170, 42622), (189, 42781), (206, 42880),

Gene: Barb_56 Start: 41203, Stop: 42051, Start Num: 96

Candidate Starts for Barb_56:

(Start: 96 @41203 has 106 MA's), (106, 41218), (239, 42031),

Gene: Barkley26_42 Start: 31914, Stop: 32999, Start Num: 48

Candidate Starts for Barkley26_42:

(Start: 48 @31914 has 68 MA's), (76, 32028), (86, 32052), (Start: 92 @32082 has 7 MA's), (131, 32301), (132, 32304), (135, 32331), (143, 32400), (151, 32463), (156, 32481), (159, 32493), (177, 32583), (206, 32799), (207, 32805), (219, 32883), (227, 32931), (230, 32946),

Gene: Bartholomew_45 Start: 31617, Stop: 32546, Start Num: 98

Candidate Starts for Bartholomew_45:

(65, 31497), (Start: 98 @31617 has 58 MA's), (108, 31647), (114, 31701), (132, 31818), (135, 31845), (137, 31860), (143, 31914), (156, 31995), (175, 32097), (189, 32211), (202, 32283), (205, 32307), (206, 32310), (219, 32394), (225, 32433), (244, 32535),

Gene: BaxterFox_59 Start: 41045, Stop: 41908, Start Num: 96

Candidate Starts for BaxterFox_59:

(55, 40889), (61, 40913), (80, 40985), (82, 40988), (Start: 83 @40991 has 1 MA's), (Start: 96 @41045 has 106 MA's), (130, 41228), (146, 41339), (147, 41345), (156, 41378), (169, 41441), (178, 41501), (180, 41528), (192, 41636), (207, 41714),

Gene: BeeGee_62 Start: 40767, Stop: 41630, Start Num: 96

Candidate Starts for BeeGee_62:

(46, 40572), (56, 40614), (60, 40632), (63, 40638), (79, 40704), (Start: 83 @40713 has 1 MA's), (Start: 96 @40767 has 106 MA's), (108, 40791), (113, 40839), (130, 40950), (156, 41100), (178, 41223), (180, 41250), (192, 41358), (203, 41406), (207, 41436),

Gene: Beenie_47 Start: 36265, Stop: 37104, Start Num: 96

Candidate Starts for Beenie_47:

(77, 36202), (Start: 96 @36265 has 106 MA's), (110, 36313), (129, 36436), (146, 36550), (150, 36568), (207, 36898),

Gene: Bernal13_44 Start: 32597, Stop: 33427, Start Num: 104

Candidate Starts for Bernal13_44:

(Start: 104 @32597 has 7 MA's), (132, 32786), (135, 32813), (154, 32924), (169, 32987), (196, 33191), (199, 33206),

Gene: Bialota_54 Start: 39472, Stop: 40347, Start Num: 96

Candidate Starts for Bialota_54:

(74, 39391), (79, 39409), (Start: 83 @39418 has 1 MA's), (Start: 96 @39472 has 106 MA's), (130, 39667), (156, 39817), (178, 39940), (180, 39967), (192, 40075), (207, 40153),

Gene: BigNuz_47 Start: 33511, Stop: 34458, Start Num: 98

Candidate Starts for BigNuz_47:

(65, 33391), (Start: 98 @33511 has 58 MA's), (108, 33538), (114, 33592), (128, 33676), (132, 33709), (137, 33751), (146, 33847), (156, 33886), (175, 33988), (189, 34102), (190, 34120), (191, 34126), (193, 34132), (202, 34174), (205, 34198), (206, 34201), (219, 34285), (224, 34321), (225, 34324),

Gene: Bjaner7_50 Start: 34872, Stop: 35735, Start Num: 96

Candidate Starts for Bjaner7_50:

(Start: 83 @34818 has 1 MA's), (Start: 96 @34872 has 106 MA's), (113, 34944), (130, 35055), (146, 35166), (156, 35205), (177, 35307), (178, 35328), (180, 35355), (192, 35463), (207, 35541),

Gene: BlueShadow_70 Start: 35827, Stop: 36666, Start Num: 103

Candidate Starts for BlueShadow_70:

(94, 35803), (Start: 103 @35827 has 7 MA's), (136, 36037), (156, 36148), (160, 36163), (174, 36241), (182, 36283), (206, 36451), (207, 36457), (208, 36460),

Gene: Bogie_49 Start: 33878, Stop: 34804, Start Num: 98

Candidate Starts for Bogie_49:

(Start: 98 @33878 has 58 MA's), (108, 33905), (114, 33959), (132, 34076), (135, 34103), (137, 34118), (143, 34172), (156, 34253), (159, 34265), (169, 34322), (177, 34361), (189, 34469), (202, 34541), (205, 34565), (206, 34568), (219, 34652), (225, 34691), (244, 34793),

Gene: Bosnia_54 Start: 40928, Stop: 41755, Start Num: 97

Candidate Starts for Bosnia_54:

(Start: 97 @40928 has 2 MA's), (108, 40949), (126, 41066), (175, 41345), (177, 41351), (178, 41372), (181, 41387), (183, 41396),

Gene: BoyNamedSue_58 Start: 40324, Stop: 41199, Start Num: 96

Candidate Starts for BoyNamedSue_58:

(36, 40093), (39, 40111), (46, 40129), (56, 40171), (60, 40189), (63, 40195), (74, 40243), (79, 40261), (Start: 83 @40270 has 1 MA's), (Start: 96 @40324 has 106 MA's), (113, 40408), (130, 40519), (146, 40630), (147, 40636), (156, 40669), (178, 40792), (180, 40819), (192, 40927), (207, 41005),

Gene: Bradissa_53 Start: 39968, Stop: 40798, Start Num: 96

Candidate Starts for Bradissa_53:

(46, 39776), (56, 39818), (63, 39842), (Start: 83 @39914 has 1 MA's), (Start: 96 @39968 has 106 MA's), (126, 40109), (152, 40277), (164, 40328), (169, 40355), (170, 40361), (175, 40388), (177, 40394), (178, 40415), (181, 40430),

Gene: BruceB_42 Start: 31907, Stop: 32992, Start Num: 48

Candidate Starts for BruceB_42:

(Start: 48 @31907 has 68 MA's), (76, 32021), (86, 32045), (Start: 92 @32075 has 7 MA's), (131, 32294), (132, 32297), (135, 32324), (143, 32393), (151, 32456), (156, 32474), (159, 32486), (177, 32576), (206, 32792), (207, 32798), (219, 32876), (227, 32924), (230, 32939),

Gene: Brusacoram_45 Start: 31613, Stop: 32539, Start Num: 98

Candidate Starts for Brusacoram_45:

(Start: 98 @31613 has 58 MA's), (108, 31640), (114, 31694), (132, 31811), (135, 31838), (137, 31853), (156, 31988), (159, 32000), (169, 32057), (177, 32096), (189, 32204), (202, 32276), (205, 32300), (206, 32303), (219, 32387), (225, 32426), (244, 32528),

Gene: Bunnies_46 Start: 31627, Stop: 32553, Start Num: 98

Candidate Starts for Bunnies_46:

(Start: 98 @31627 has 58 MA's), (108, 31654), (114, 31708), (132, 31825), (135, 31852), (137, 31867), (156, 32002), (159, 32014), (169, 32071), (177, 32110), (189, 32218), (193, 32248), (202, 32290), (205, 32314), (206, 32317), (219, 32401), (225, 32440), (244, 32542),

Gene: Bunnybear_52 Start: 38350, Stop: 39213, Start Num: 96

Candidate Starts for Bunnybear_52:

(20, 37996), (22, 38017), (55, 38197), (61, 38221), (Start: 96 @38350 has 106 MA's), (126, 38500), (130, 38533), (156, 38683), (178, 38806), (180, 38833), (192, 38941), (203, 38989), (207, 39019),

Gene: CLED96_42 Start: 31907, Stop: 32992, Start Num: 48

Candidate Starts for CLED96_42:

(Start: 48 @31907 has 68 MA's), (76, 32021), (86, 32045), (Start: 92 @32075 has 7 MA's), (131, 32294), (132, 32297), (135, 32324), (143, 32393), (151, 32456), (156, 32474), (159, 32486), (177, 32576), (206, 32792), (207, 32798), (219, 32876), (227, 32924), (230, 32939),

Gene: CactusJack_45 Start: 31877, Stop: 32803, Start Num: 98

Candidate Starts for CactusJack_45:

(Start: 98 @31877 has 58 MA's), (108, 31904), (114, 31958), (132, 32075), (135, 32102), (137, 32117), (156, 32252), (159, 32264), (169, 32321), (177, 32360), (189, 32468), (193, 32498), (202, 32540), (205, 32564), (206, 32567), (219, 32651), (225, 32690), (244, 32792),

Gene: Cambiare_44 Start: 34235, Stop: 35314, Start Num: 48

Candidate Starts for Cambiare_44:

(2, 33494), (3, 33521), (28, 34142), (Start: 48 @34235 has 68 MA's), (109, 34469), (127, 34583), (131, 34622), (132, 34625), (147, 34769), (151, 34784), (156, 34802), (177, 34904), (206, 35123), (227, 35255),

Gene: Camri_42 Start: 31907, Stop: 32992, Start Num: 48

Candidate Starts for Camri_42:

(Start: 48 @31907 has 68 MA's), (76, 32021), (86, 32045), (Start: 92 @32075 has 7 MA's), (131, 32294), (132, 32297), (135, 32324), (143, 32393), (151, 32456), (156, 32474), (159, 32486), (177, 32576), (206, 32792), (207, 32798), (219, 32876), (227, 32924), (230, 32939),

Gene: Camster_46 Start: 31634, Stop: 32560, Start Num: 98

Candidate Starts for Camster_46:

(Start: 98 @31634 has 58 MA's), (108, 31661), (114, 31715), (132, 31832), (135, 31859), (137, 31874), (143, 31928), (156, 32009), (175, 32111), (189, 32225), (202, 32297), (205, 32321), (206, 32324), (219, 32408), (225, 32447), (244, 32549),

Gene: Cashline_56 Start: 40617, Stop: 41480, Start Num: 96

Candidate Starts for Cashline_56:

(Start: 96 @40617 has 106 MA's), (130, 40800), (146, 40911), (147, 40917), (156, 40950), (178, 41073), (180, 41100), (192, 41208), (207, 41286),

Gene: CassieYates_42 Start: 31907, Stop: 32992, Start Num: 48

Candidate Starts for CassieYates_42:

(Start: 48 @31907 has 68 MA's), (76, 32021), (86, 32045), (Start: 92 @32075 has 7 MA's), (131, 32294), (132, 32297), (135, 32324), (143, 32393), (151, 32456), (156, 32474), (159, 32486), (177, 32576), (206, 32792), (207, 32798), (219, 32876), (227, 32924), (230, 32939),

Gene: Cedasite_42 Start: 31907, Stop: 32992, Start Num: 48

Candidate Starts for Cedasite_42:

(Start: 48 @31907 has 68 MA's), (76, 32021), (86, 32045), (Start: 92 @32075 has 7 MA's), (131, 32294), (132, 32297), (135, 32324), (143, 32393), (151, 32456), (156, 32474), (159, 32486), (177, 32576), (206, 32792), (207, 32798), (219, 32876), (227, 32924), (230, 32939),

Gene: Chance64_42 Start: 31907, Stop: 32992, Start Num: 48

Candidate Starts for Chance64_42:

(Start: 48 @31907 has 68 MA's), (76, 32021), (86, 32045), (Start: 92 @32075 has 7 MA's), (131, 32294), (132, 32297), (135, 32324), (143, 32393), (151, 32456), (156, 32474), (159, 32486), (201, 32762), (206, 32792), (219, 32876), (227, 32924), (230, 32939),

Gene: Charlie_47 Start: 30994, Stop: 31923, Start Num: 98

Candidate Starts for Charlie_47:

(65, 30874), (Start: 98 @30994 has 58 MA's), (108, 31024), (114, 31078), (132, 31195), (135, 31222), (137, 31237), (143, 31291), (156, 31372), (175, 31474), (189, 31588), (202, 31660), (205, 31684), (206, 31687), (219, 31771), (225, 31810), (244, 31912),

Gene: Che9c_60 Start: 42706, Stop: 43650, Start Num: 98

Candidate Starts for Che9c_60:

(47, 42514), (65, 42586), (Start: 98 @42706 has 58 MA's), (105, 42712), (108, 42730), (119, 42805), (123, 42841), (132, 42901), (137, 42943), (143, 42997), (146, 43039), (156, 43078), (159, 43090), (175, 43180), (184, 43240), (189, 43294), (206, 43393), (219, 43477), (224, 43513),

Gene: CherryCola_57 Start: 41836, Stop: 42684, Start Num: 96

Candidate Starts for CherryCola_57:

(89, 41809), (Start: 96 @41836 has 106 MA's), (239, 42664),

Gene: Cherrybomb426_42 Start: 31907, Stop: 32992, Start Num: 48

Candidate Starts for Cherrybomb426_42:

(Start: 48 @31907 has 68 MA's), (76, 32021), (86, 32045), (Start: 92 @32075 has 7 MA's), (131, 32294), (132, 32297), (135, 32324), (143, 32393), (151, 32456), (156, 32474), (159, 32486), (177, 32576), (206, 32792), (207, 32798), (219, 32876), (227, 32924), (230, 32939),

Gene: ChickenDinner_68 Start: 41043, Stop: 41897, Start Num: 92

Candidate Starts for ChickenDinner_68:

(Start: 92 @41043 has 7 MA's), (126, 41205), (130, 41238), (132, 41250), (134, 41274), (146, 41349), (150, 41367), (156, 41388), (175, 41490), (180, 41541), (183, 41553), (185, 41568), (200, 41685), (209, 41736), (210, 41742), (215, 41772), (227, 41856),

Gene: ClamChowder_56 Start: 41203, Stop: 42051, Start Num: 96

Candidate Starts for ClamChowder_56:

(Start: 96 @41203 has 106 MA's), (106, 41218), (239, 42031),

Gene: Clap_53 Start: 35051, Stop: 35914, Start Num: 96

Candidate Starts for Clap_53:

(Start: 83 @34997 has 1 MA's), (Start: 96 @35051 has 106 MA's), (113, 35123), (130, 35234), (146, 35345), (156, 35384), (177, 35486), (178, 35507), (180, 35534), (192, 35642), (207, 35720),

Gene: Clark_53 Start: 36082, Stop: 36921, Start Num: 96

Candidate Starts for Clark_53:

(77, 36019), (Start: 96 @36082 has 106 MA's), (110, 36130), (129, 36253), (146, 36367), (150, 36385), (207, 36715),

Gene: Clown_66 Start: 45838, Stop: 46686, Start Num: 96

Candidate Starts for Clown_66:

(Start: 96 @45838 has 106 MA's), (108, 45871), (113, 45919), (170, 46240),

Gene: Coleslaw_42 Start: 31898, Stop: 32983, Start Num: 48

Candidate Starts for Coleslaw_42:

(Start: 48 @31898 has 68 MA's), (76, 32012), (86, 32036), (Start: 92 @32066 has 7 MA's), (131, 32285), (132, 32288), (135, 32315), (143, 32384), (151, 32447), (156, 32465), (159, 32477), (177, 32567), (206, 32783), (207, 32789), (219, 32867), (227, 32915), (230, 32930),

Gene: Confidence_57 Start: 38465, Stop: 39328, Start Num: 96

Candidate Starts for Confidence_57:

(Start: 96 @38465 has 106 MA's), (126, 38615), (130, 38648), (156, 38798), (178, 38921), (180, 38948), (192, 39056), (203, 39104), (207, 39134), (219, 39212),

Gene: CoveyB_56 Start: 40854, Stop: 41729, Start Num: 89

Candidate Starts for CoveyB_56:

(89, 40854), (Start: 96 @40881 has 106 MA's), (239, 41709),

Gene: Crespo_42 Start: 31908, Stop: 32993, Start Num: 48

Candidate Starts for Crespo_42:

(Start: 48 @31908 has 68 MA's), (76, 32022), (86, 32046), (Start: 92 @32076 has 7 MA's), (131, 32295), (132, 32298), (135, 32325), (143, 32394), (151, 32457), (156, 32475), (159, 32487), (177, 32577), (206, 32793), (207, 32799), (219, 32877), (227, 32925), (230, 32940),

Gene: Cynthia_53 Start: 35049, Stop: 35912, Start Num: 96

Candidate Starts for Cynthia_53:

(Start: 83 @34995 has 1 MA's), (Start: 96 @35049 has 106 MA's), (113, 35121), (130, 35232), (146, 35343), (156, 35382), (177, 35484), (178, 35505), (180, 35532), (192, 35640), (207, 35718),

Gene: DMoney_42 Start: 31907, Stop: 32992, Start Num: 48

Candidate Starts for DMoney_42:

(Start: 48 @31907 has 68 MA's), (76, 32021), (86, 32045), (Start: 92 @32075 has 7 MA's), (131, 32294), (132, 32297), (135, 32324), (143, 32393), (151, 32456), (156, 32474), (159, 32486), (177, 32576), (206, 32792), (207, 32798), (219, 32876), (227, 32924), (230, 32939),

Gene: DNAIII_0041 Start: 30541, Stop: 31626, Start Num: 48

Candidate Starts for DNAIII_0041:

(Start: 48 @30541 has 68 MA's), (76, 30655), (86, 30679), (Start: 92 @30709 has 7 MA's), (131, 30928), (132, 30931), (135, 30958), (143, 31027), (151, 31090), (156, 31108), (159, 31120), (201, 31396), (206, 31426), (219, 31510), (227, 31558), (230, 31573),

Gene: Danyall_55 Start: 40890, Stop: 41723, Start Num: 107

Candidate Starts for Danyall_55:

(Start: 107 @40890 has 9 MA's), (114, 40959), (116, 40974), (123, 41016), (132, 41076), (156, 41214), (169, 41277), (170, 41283), (189, 41442), (206, 41541),

Gene: Darionha_42 Start: 31907, Stop: 32992, Start Num: 48

Candidate Starts for Darionha_42:

(Start: 48 @31907 has 68 MA's), (76, 32021), (86, 32045), (Start: 92 @32075 has 7 MA's), (131, 32294), (132, 32297), (135, 32324), (143, 32393), (151, 32456), (156, 32474), (159, 32486), (177, 32576), (206, 32792), (207, 32798), (219, 32876), (227, 32924), (230, 32939),

Gene: DobbysSock_46 Start: 34924, Stop: 35763, Start Num: 96

Candidate Starts for DobbysSock_46:

(77, 34861), (Start: 96 @34924 has 106 MA's), (110, 34972), (129, 35095), (146, 35209), (150, 35227), (207, 35557),

Gene: DocMcStuffins_66 Start: 41043, Stop: 41897, Start Num: 92

Candidate Starts for DocMcStuffins_66:

(Start: 92 @41043 has 7 MA's), (126, 41205), (130, 41238), (132, 41250), (134, 41274), (146, 41349), (150, 41367), (156, 41388), (175, 41490), (180, 41541), (183, 41553), (185, 41568), (200, 41685), (209, 41736), (210, 41742), (215, 41772), (227, 41856),

Gene: Dolores_55 Start: 36820, Stop: 37683, Start Num: 96

Candidate Starts for Dolores_55:

(79, 36757), (Start: 96 @36820 has 106 MA's), (146, 37114), (156, 37153), (160, 37168), (178, 37276), (180, 37303), (182, 37309), (188, 37363), (192, 37411), (202, 37456), (203, 37459), (207, 37489),

Gene: Donovan_46 Start: 31640, Stop: 32569, Start Num: 98

Candidate Starts for Donovan_46:

(65, 31520), (Start: 98 @31640 has 58 MA's), (108, 31670), (114, 31724), (132, 31841), (135, 31868), (137, 31883), (143, 31937), (156, 32018), (175, 32120), (189, 32234), (202, 32306), (205, 32330), (206, 32333), (219, 32417), (225, 32456), (244, 32558),

Gene: Dorito_49 Start: 34569, Stop: 35408, Start Num: 96

Candidate Starts for Dorito_49:

(77, 34506), (Start: 96 @34569 has 106 MA's), (110, 34617), (129, 34740), (146, 34854), (150, 34872), (207, 35202), (209, 35211), (217, 35265),

Gene: Doucette_40 Start: 27776, Stop: 28702, Start Num: 102

Candidate Starts for Doucette_40:

(90, 27746), (Start: 102 @27776 has 7 MA's), (Start: 104 @27779 has 7 MA's), (109, 27812), (115, 27869), (124, 27923), (132, 27983), (135, 28010), (144, 28064), (147, 28088), (155, 28112), (156, 28121), (161, 28148), (170, 28196), (171, 28214), (182, 28271), (202, 28421), (215, 28499), (226, 28574), (229, 28595), (245, 28679),

Gene: DumpsterDude_55 Start: 42126, Stop: 42956, Start Num: 96

Candidate Starts for DumpsterDude_55:

(5, 41562), (6, 41565), (30, 41865), (31, 41880), (36, 41895), (37, 41901), (41, 41919), (56, 41973), (63, 41997), (79, 42063), (82, 42069), (Start: 96 @42126 has 106 MA's), (126, 42267), (167, 42504), (175, 42546), (178, 42573), (180, 42585),

Gene: Dynamo_46 Start: 32100, Stop: 33029, Start Num: 98

Candidate Starts for Dynamo_46:

(65, 31980), (Start: 98 @32100 has 58 MA's), (108, 32130), (114, 32184), (132, 32301), (135, 32328), (137, 32343), (143, 32397), (156, 32478), (175, 32580), (189, 32694), (202, 32766), (205, 32790), (206, 32793), (219, 32877), (225, 32916), (244, 33018),

Gene: E1_37 Start: 26633, Stop: 27484, Start Num: 102

Candidate Starts for E1_37:

(9, 26144), (12, 26186), (16, 26234), (21, 26261), (35, 26381), (38, 26393), (40, 26405), (59, 26477), (68, 26501), (70, 26513), (76, 26543), (90, 26597), (Start: 102 @26633 has 7 MA's), (Start: 104 @26636 has 7 MA's), (109, 26669), (115, 26726), (118, 26741), (121, 26768), (122, 26777), (124, 26780), (132, 26840), (135, 26867), (144, 26921), (147, 26945), (155, 26969), (156, 26978), (161, 27005), (170, 27053), (171, 27071), (202, 27278), (215, 27356), (229, 27452),

Gene: E6_41 Start: 29214, Stop: 30065, Start Num: 102

Candidate Starts for E6_41:

(9, 28731), (12, 28773), (16, 28821), (21, 28848), (35, 28968), (38, 28980), (40, 28992), (59, 29064), (68, 29088), (70, 29100), (76, 29130), (90, 29184), (Start: 102 @29214 has 7 MA's), (Start: 104 @29217 has 7 MA's), (109, 29250), (115, 29307), (124, 29361), (132, 29421), (135, 29448), (144, 29502), (147, 29526), (155, 29550), (156, 29559), (161, 29586), (170, 29634), (171, 29652), (202, 29859), (205, 29883), (215, 29937), (229, 30033),

Gene: ECartman_42 Start: 31907, Stop: 32992, Start Num: 48

Candidate Starts for ECartman_42:

(Start: 48 @31907 has 68 MA's), (76, 32021), (86, 32045), (Start: 92 @32075 has 7 MA's), (131, 32294), (132, 32297), (135, 32324), (143, 32393), (151, 32456), (156, 32474), (159, 32486), (206, 32792), (207, 32798), (219, 32876), (227, 32924), (230, 32939),

Gene: EMSquaredA_56 Start: 39499, Stop: 40374, Start Num: 96

Candidate Starts for EMSquaredA_56:

(36, 39268), (39, 39286), (46, 39304), (56, 39346), (60, 39364), (63, 39370), (74, 39418), (79, 39436), (Start: 83 @39445 has 1 MA's), (Start: 96 @39499 has 106 MA's), (113, 39583), (130, 39694), (146, 39805), (147, 39811), (156, 39844), (178, 39967), (180, 39994), (192, 40102), (207, 40180),

Gene: Easley_51 Start: 36057, Stop: 36890, Start Num: 96

Candidate Starts for Easley_51:

(79, 35994), (Start: 96 @36057 has 106 MA's), (113, 36129), (126, 36198), (133, 36246), (175, 36477), (178, 36504),

Gene: Ebert_57 Start: 35471, Stop: 36346, Start Num: 96

Candidate Starts for Ebert_57:

(23, 35156), (36, 35240), (39, 35258), (46, 35276), (56, 35318), (60, 35336), (63, 35342), (74, 35390), (79, 35408), (Start: 83 @35417 has 1 MA's), (Start: 96 @35471 has 106 MA's), (130, 35666), (147, 35783), (156, 35816), (169, 35879), (177, 35918), (178, 35939), (180, 35966), (192, 36074), (207, 36152),

Gene: EdnaMode_50 Start: 34661, Stop: 35536, Start Num: 96

Candidate Starts for EdnaMode_50:

(74, 34580), (79, 34598), (Start: 83 @34607 has 1 MA's), (Start: 96 @34661 has 106 MA's), (130, 34856), (156, 35006), (178, 35129), (180, 35156), (192, 35264), (207, 35342),

Gene: EnalisNailo_53 Start: 39490, Stop: 40341, Start Num: 96

Candidate Starts for EnalisNailo_53:

(44, 39295), (55, 39337), (58, 39355), (61, 39361), (79, 39427), (Start: 83 @39436 has 1 MA's), (Start: 96 @39490 has 106 MA's), (146, 39787), (150, 39805), (207, 40135),

Gene: Eudoria_56 Start: 38840, Stop: 39715, Start Num: 96

Candidate Starts for Eudoria_56:

(Start: 96 @38840 has 106 MA's), (130, 39035), (156, 39185), (178, 39308), (180, 39335), (192, 39443), (207, 39521),

Gene: Evamon_53 Start: 40929, Stop: 41777, Start Num: 96

Candidate Starts for Evamon_53:

(89, 40902), (Start: 96 @40929 has 106 MA's), (106, 40944),

Gene: EvePickles_65 Start: 36266, Stop: 37069, Start Num: 103

Candidate Starts for EvePickles_65:

(Start: 103 @36266 has 7 MA's), (156, 36587), (160, 36602), (172, 36680), (180, 36719), (182, 36725), (201, 36863), (202, 36866), (208, 36902), (213, 36929),

Gene: Farewell_58 Start: 39058, Stop: 40056, Start Num: 62

Candidate Starts for Farewell_58:

(Start: 62 @39058 has 1 MA's), (Start: 83 @39133 has 1 MA's), (84, 39139), (132, 39382), (134, 39406), (135, 39409), (137, 39412), (142, 39451), (153, 39520), (156, 39532), (163, 39562), (180, 39670), (196, 39790), (200, 39811), (207, 39853), (220, 39943), (227, 39982),

Gene: Fireball_56 Start: 41525, Stop: 42358, Start Num: 107

Candidate Starts for Fireball_56:

(Start: 107 @41525 has 9 MA's), (114, 41594), (116, 41609), (123, 41651), (132, 41711), (156, 41849), (169, 41912), (170, 41918), (189, 42077), (206, 42176),

Gene: FirstPlacePfu_46 Start: 31649, Stop: 32578, Start Num: 98

Candidate Starts for FirstPlacePfu_46:

(65, 31529), (Start: 98 @31649 has 58 MA's), (108, 31679), (114, 31733), (132, 31850), (135, 31877), (137, 31892), (143, 31946), (146, 31988), (156, 32027), (175, 32129), (189, 32243), (202, 32315), (205, 32339), (206, 32342), (219, 32426), (225, 32465), (244, 32567),

Gene: Fishburne_45 Start: 31617, Stop: 32546, Start Num: 98

Candidate Starts for Fishburne_45:

(65, 31497), (Start: 98 @31617 has 58 MA's), (108, 31647), (114, 31701), (132, 31818), (135, 31845), (137, 31860), (143, 31914), (156, 31995), (175, 32097), (189, 32211), (202, 32283), (205, 32307), (206, 32310), (219, 32394), (225, 32433), (244, 32535),

Gene: FlagStaff_42 Start: 33012, Stop: 34091, Start Num: 48

Candidate Starts for FlagStaff_42:

(Start: 48 @33012 has 68 MA's), (87, 33159), (127, 33360), (131, 33399), (132, 33402), (135, 33429), (151, 33561), (156, 33579), (159, 33591), (177, 33681), (188, 33783), (201, 33870), (206, 33900), (211, 33927), (227, 34032),

Gene: Floral_57 Start: 41384, Stop: 42259, Start Num: 96

Candidate Starts for Floral_57:

(8, 40919), (14, 40985), (25, 41078), (46, 41189), (56, 41231), (60, 41249), (63, 41255), (79, 41321), (Start: 83 @41330 has 1 MA's), (Start: 96 @41384 has 106 MA's), (126, 41546), (130, 41579), (146, 41690), (156, 41729), (180, 41879), (192, 41987), (207, 42065),

Gene: FroggyToad_52 Start: 35451, Stop: 36281, Start Num: 96

Candidate Starts for FroggyToad_52:

(Start: 96 @35451 has 106 MA's), (129, 35622), (157, 35781), (167, 35829), (175, 35871), (177, 35877), (178, 35898), (181, 35913),

Gene: Frosty24_42 Start: 31907, Stop: 32992, Start Num: 48

Candidate Starts for Frosty24_42:

(Start: 48 @31907 has 68 MA's), (76, 32021), (86, 32045), (Start: 92 @32075 has 7 MA's), (131, 32294), (132, 32297), (135, 32324), (143, 32393), (151, 32456), (156, 32474), (159, 32486), (177, 32576), (206, 32792), (207, 32798), (219, 32876), (227, 32924), (230, 32939),

Gene: Fugax_57 Start: 41195, Stop: 42043, Start Num: 96

Candidate Starts for Fugax_57:

(Start: 96 @41195 has 106 MA's), (106, 41210), (239, 42023),

Gene: G4_38 Start: 26748, Stop: 27599, Start Num: 102

Candidate Starts for G4_38:

(4, 26205), (9, 26304), (12, 26346), (13, 26355), (16, 26394), (21, 26421), (35, 26529), (40, 26550), (45, 26562), (57, 26610), (76, 26664), (90, 26718), (Start: 102 @26748 has 7 MA's), (Start: 104 @26751 has 7 MA's), (109, 26784), (115, 26841), (118, 26856), (121, 26883), (122, 26892), (124, 26895), (132, 26955), (135, 26982), (144, 27036), (147, 27060), (155, 27084), (156, 27093), (161, 27120), (170, 27168), (171, 27186), (182, 27243), (189, 27318), (190, 27336), (191, 27342), (202, 27393), (204, 27402), (215, 27471), (229, 27567),

Gene: GMA1_46 Start: 29913, Stop: 30710, Start Num: 101

Candidate Starts for GMA1_46:

(26, 29616), (49, 29730), (65, 29793), (101, 29913), (169, 30309), (170, 30315), (183, 30393), (200, 30519), (207, 30561), (208, 30564),

Gene: Gavriela_45 Start: 31904, Stop: 32803, Start Num: 108

Candidate Starts for Gavriela_45:

(Start: 98 @31877 has 58 MA's), (108, 31904), (114, 31958), (132, 32075), (135, 32102), (137, 32117), (156, 32252), (159, 32264), (169, 32321), (177, 32360), (189, 32468), (202, 32540), (205, 32564), (206, 32567), (219, 32651), (225, 32690), (244, 32792),

Gene: GemG_53 Start: 35055, Stop: 35918, Start Num: 96

Candidate Starts for GemG_53:

(Start: 83 @35001 has 1 MA's), (Start: 96 @35055 has 106 MA's), (113, 35127), (130, 35238), (146, 35349), (156, 35388), (177, 35490), (178, 35511), (180, 35538), (192, 35646), (207, 35724),

Gene: Gezellig_56 Start: 41007, Stop: 41882, Start Num: 89

Candidate Starts for Gezellig_56:

(89, 41007), (Start: 96 @41034 has 106 MA's), (239, 41862),

Gene: Gideon_42 Start: 31907, Stop: 32992, Start Num: 48

Candidate Starts for Gideon_42:

(Start: 48 @31907 has 68 MA's), (76, 32021), (86, 32045), (Start: 92 @32075 has 7 MA's), (131, 32294), (132, 32297), (135, 32324), (143, 32393), (151, 32456), (156, 32474), (159, 32486), (177, 32576), (206, 32792), (207, 32798), (219, 32876), (227, 32924), (230, 32939),

Gene: Gizermo_53 Start: 35051, Stop: 35914, Start Num: 96

Candidate Starts for Gizermo_53:

(Start: 83 @34997 has 1 MA's), (Start: 96 @35051 has 106 MA's), (113, 35123), (130, 35234), (146, 35345), (156, 35384), (177, 35486), (178, 35507), (180, 35534), (192, 35642), (207, 35720),

Gene: Glaske_45 Start: 31877, Stop: 32803, Start Num: 98

Candidate Starts for Glaske_45:

(Start: 98 @31877 has 58 MA's), (108, 31904), (114, 31958), (132, 32075), (135, 32102), (137, 32117), (156, 32252), (159, 32264), (169, 32321), (177, 32360), (189, 32468), (193, 32498), (202, 32540), (205, 32564), (206, 32567), (219, 32651), (225, 32690), (244, 32792),

Gene: GoldenAsh_42 Start: 31892, Stop: 32977, Start Num: 48

Candidate Starts for GoldenAsh_42:

(Start: 48 @31892 has 68 MA's), (76, 32006), (86, 32030), (Start: 92 @32060 has 7 MA's), (131, 32279), (132, 32282), (135, 32309), (143, 32378), (151, 32441), (156, 32459), (159, 32471), (177, 32561), (206, 32777), (207, 32783), (219, 32861), (227, 32909), (230, 32924),

Gene: Gomashi_42 Start: 31908, Stop: 32993, Start Num: 48

Candidate Starts for Gomashi_42:

(Start: 48 @31908 has 68 MA's), (76, 32022), (86, 32046), (Start: 92 @32076 has 7 MA's), (131, 32295), (132, 32298), (135, 32325), (143, 32394), (151, 32457), (156, 32475), (159, 32487), (177, 32577), (206, 32793), (207, 32799), (219, 32877), (227, 32925), (230, 32940),

Gene: GreaseLightnin_46 Start: 31856, Stop: 32782, Start Num: 98

Candidate Starts for GreaseLightnin_46:

(Start: 98 @31856 has 58 MA's), (108, 31883), (114, 31937), (132, 32054), (135, 32081), (137, 32096), (156, 32231), (159, 32243), (169, 32300), (177, 32339), (189, 32447), (193, 32477), (202, 32519), (205, 32543), (206, 32546), (219, 32630), (225, 32669), (244, 32771),

Gene: Grizzly_42 Start: 31892, Stop: 32977, Start Num: 48

Candidate Starts for Grizzly_42:

(Start: 48 @31892 has 68 MA's), (76, 32006), (86, 32030), (Start: 92 @32060 has 7 MA's), (131, 32279), (132, 32282), (135, 32309), (143, 32378), (151, 32441), (156, 32459), (159, 32471), (177, 32561), (206, 32777), (207, 32783), (219, 32861), (227, 32909), (230, 32924),

Gene: HC_45 Start: 31260, Stop: 32189, Start Num: 98

Candidate Starts for HC_45:

(65, 31140), (Start: 98 @31260 has 58 MA's), (108, 31290), (114, 31344), (132, 31461), (135, 31488), (137, 31503), (143, 31557), (156, 31638), (175, 31740), (189, 31854), (202, 31926), (205, 31950), (206, 31953), (219, 32037), (225, 32076), (244, 32178),

Gene: HUHilltop_47 Start: 32135, Stop: 33061, Start Num: 98

Candidate Starts for HUHilltop_47:

(Start: 98 @32135 has 58 MA's), (108, 32162), (114, 32216), (132, 32333), (135, 32360), (137, 32375), (143, 32429), (156, 32510), (159, 32522), (169, 32579), (177, 32618), (189, 32726), (202, 32798), (205, 32822), (206, 32825), (219, 32909), (225, 32948), (244, 33050),

Gene: Haley23_53 Start: 35051, Stop: 35914, Start Num: 96

Candidate Starts for Haley23_53:

(Start: 83 @34997 has 1 MA's), (Start: 96 @35051 has 106 MA's), (113, 35123), (130, 35234), (146, 35345), (156, 35384), (177, 35486), (178, 35507), (180, 35534), (192, 35642), (207, 35720),

Gene: Halo_42 Start: 31902, Stop: 32987, Start Num: 48

Candidate Starts for Halo_42:

(Start: 48 @31902 has 68 MA's), (76, 32016), (86, 32040), (Start: 92 @32070 has 7 MA's), (131, 32289), (132, 32292), (135, 32319), (143, 32388), (151, 32451), (156, 32469), (159, 32481), (177, 32571), (206, 32787), (207, 32793), (219, 32871), (227, 32919), (230, 32934),

Gene: Halo3_54 Start: 41619, Stop: 42467, Start Num: 96
Candidate Starts for Halo3_54:
(89, 41592), (Start: 96 @41619 has 106 MA's), (239, 42447),

Gene: Herod_57 Start: 41310, Stop: 42173, Start Num: 96
Candidate Starts for Herod_57:
(Start: 96 @41310 has 106 MA's), (130, 41493), (146, 41604), (147, 41610), (156, 41643), (169, 41706), (178, 41766), (180, 41793), (192, 41901), (207, 41979),

Gene: Hillester_73 Start: 37290, Stop: 38117, Start Num: 103
Candidate Starts for Hillester_73:
(93, 37269), (Start: 103 @37290 has 7 MA's), (119, 37377), (134, 37494), (151, 37593), (156, 37611), (160, 37626), (208, 37923), (240, 38106),

Gene: Hope_42 Start: 31907, Stop: 32992, Start Num: 48
Candidate Starts for Hope_42:
(Start: 48 @31907 has 68 MA's), (76, 32021), (86, 32045), (Start: 92 @32075 has 7 MA's), (131, 32294), (132, 32297), (135, 32324), (143, 32393), (151, 32456), (156, 32474), (159, 32486), (177, 32576), (206, 32792), (207, 32798), (219, 32876), (227, 32924), (230, 32939),

Gene: Hortense_57 Start: 40640, Stop: 41503, Start Num: 96
Candidate Starts for Hortense_57:
(79, 40577), (Start: 96 @40640 has 106 MA's), (126, 40790), (130, 40823), (156, 40973), (161, 41000), (178, 41096), (180, 41123), (182, 41129), (207, 41309), (236, 41483),

Gene: Hotshotbaby7_42 Start: 31907, Stop: 32992, Start Num: 48
Candidate Starts for Hotshotbaby7_42:
(Start: 48 @31907 has 68 MA's), (76, 32021), (86, 32045), (Start: 92 @32075 has 7 MA's), (131, 32294), (132, 32297), (135, 32324), (143, 32393), (151, 32456), (156, 32474), (159, 32486), (201, 32762), (206, 32792), (219, 32876), (227, 32924), (230, 32939),

Gene: Howe_57 Start: 40640, Stop: 41503, Start Num: 96
Candidate Starts for Howe_57:
(79, 40577), (Start: 96 @40640 has 106 MA's), (126, 40790), (130, 40823), (156, 40973), (161, 41000), (178, 41096), (180, 41123), (182, 41129), (207, 41309), (236, 41483),

Gene: Hugley_55 Start: 41290, Stop: 42153, Start Num: 96
Candidate Starts for Hugley_55:
(Start: 96 @41290 has 106 MA's), (130, 41473), (146, 41584), (147, 41590), (156, 41623), (169, 41686), (178, 41746), (180, 41773), (192, 41881), (207, 41959),

Gene: Hyzer_65 Start: 43242, Stop: 44117, Start Num: 96
Candidate Starts for Hyzer_65:
(Start: 96 @43242 has 106 MA's), (113, 43326), (126, 43404), (146, 43548), (156, 43587), (159, 43599), (160, 43602), (178, 43710), (180, 43737), (187, 43785), (192, 43845), (207, 43923), (208, 43926),

Gene: Ibrahim_44 Start: 33043, Stop: 33873, Start Num: 104
Candidate Starts for Ibrahim_44:
(Start: 104 @33043 has 7 MA's), (132, 33232), (135, 33259), (154, 33370), (169, 33433), (196, 33637), (199, 33652),

Gene: Invectra_55 Start: 37656, Stop: 38495, Start Num: 96

Candidate Starts for Invectra_55:

(77, 37593), (Start: 96 @37656 has 106 MA's), (110, 37704), (129, 37827), (146, 37941), (150, 37959), (207, 38289),

Gene: JCole_50 Start: 33782, Stop: 34609, Start Num: 97

Candidate Starts for JCole_50:

(Start: 97 @33782 has 2 MA's), (108, 33803), (126, 33920), (175, 34199), (177, 34205), (178, 34226), (181, 34241), (183, 34250),

Gene: Jablanski_59 Start: 42318, Stop: 43193, Start Num: 96

Candidate Starts for Jablanski_59:

(Start: 96 @42318 has 106 MA's), (130, 42513), (156, 42663), (177, 42765), (178, 42786), (180, 42813), (192, 42921), (207, 42999),

Gene: Jambalaya_53 Start: 40688, Stop: 41521, Start Num: 107

Candidate Starts for Jambalaya_53:

(Start: 107 @40688 has 9 MA's), (114, 40757), (116, 40772), (123, 40814), (132, 40874), (156, 41012), (169, 41075), (170, 41081), (189, 41240), (206, 41339),

Gene: Jane_42 Start: 31907, Stop: 32992, Start Num: 48

Candidate Starts for Jane_42:

(Start: 48 @31907 has 68 MA's), (76, 32021), (86, 32045), (Start: 92 @32075 has 7 MA's), (131, 32294), (132, 32297), (135, 32324), (143, 32393), (151, 32456), (156, 32474), (159, 32486), (177, 32576), (206, 32792), (207, 32798), (219, 32876), (227, 32924), (230, 32939),

Gene: Jebeks_47 Start: 31677, Stop: 32606, Start Num: 98

Candidate Starts for Jebeks_47:

(65, 31557), (Start: 98 @31677 has 58 MA's), (108, 31707), (114, 31761), (132, 31878), (135, 31905), (137, 31920), (143, 31974), (146, 32016), (156, 32055), (175, 32157), (189, 32271), (202, 32343), (205, 32367), (206, 32370), (219, 32454), (225, 32493), (244, 32595),

Gene: Jolene_42 Start: 31907, Stop: 32992, Start Num: 48

Candidate Starts for Jolene_42:

(Start: 48 @31907 has 68 MA's), (76, 32021), (86, 32045), (Start: 92 @32075 has 7 MA's), (131, 32294), (132, 32297), (135, 32324), (143, 32393), (151, 32456), (156, 32474), (159, 32486), (201, 32762), (206, 32792), (219, 32876), (227, 32924), (230, 32939),

Gene: Jolie2_42 Start: 32418, Stop: 33506, Start Num: 48

Candidate Starts for Jolie2_42:

(28, 32328), (Start: 48 @32418 has 68 MA's), (72, 32511), (86, 32556), (Start: 96 @32604 has 106 MA's), (106, 32619), (110, 32661), (120, 32718), (131, 32802), (132, 32805), (135, 32832), (140, 32883), (151, 32964), (156, 32982), (189, 33207), (201, 33273), (206, 33303), (216, 33360), (219, 33387), (227, 33435),

Gene: Jonghyun_41 Start: 31907, Stop: 32992, Start Num: 48

Candidate Starts for Jonghyun_41:

(Start: 48 @31907 has 68 MA's), (76, 32021), (86, 32045), (Start: 92 @32075 has 7 MA's), (131, 32294), (132, 32297), (135, 32324), (143, 32393), (151, 32456), (156, 32474), (159, 32486), (201, 32762), (206, 32792), (219, 32876), (227, 32924), (230, 32939),

Gene: JorRay_42 Start: 31907, Stop: 32992, Start Num: 48

Candidate Starts for JorRay_42:

(Start: 48 @31907 has 68 MA's), (76, 32021), (86, 32045), (Start: 92 @32075 has 7 MA's), (131, 32294), (132, 32297), (135, 32324), (143, 32393), (151, 32456), (156, 32474), (159, 32486), (177, 32576), (206, 32792), (207, 32798), (219, 32876), (227, 32924), (230, 32939),

Gene: Journey_46 Start: 30994, Stop: 31923, Start Num: 98

Candidate Starts for Journey_46:

(65, 30874), (Start: 98 @30994 has 58 MA's), (108, 31024), (114, 31078), (132, 31195), (135, 31222), (137, 31237), (143, 31291), (156, 31372), (175, 31474), (189, 31588), (202, 31660), (205, 31684), (206, 31687), (219, 31771), (225, 31810), (244, 31912),

Gene: Jung_44 Start: 31575, Stop: 32504, Start Num: 98

Candidate Starts for Jung_44:

(65, 31455), (Start: 98 @31575 has 58 MA's), (108, 31605), (114, 31659), (132, 31776), (135, 31803), (137, 31818), (143, 31872), (156, 31953), (175, 32055), (189, 32169), (202, 32241), (205, 32265), (206, 32268), (219, 32352), (225, 32391), (244, 32493),

Gene: Juniormint_46 Start: 31649, Stop: 32575, Start Num: 98

Candidate Starts for Juniormint_46:

(Start: 98 @31649 has 58 MA's), (108, 31676), (114, 31730), (132, 31847), (135, 31874), (137, 31889), (156, 32024), (159, 32036), (169, 32093), (177, 32132), (189, 32240), (193, 32270), (202, 32312), (205, 32336), (206, 32339), (219, 32423), (225, 32462), (244, 32564),

Gene: Kareem_42 Start: 31907, Stop: 32992, Start Num: 48

Candidate Starts for Kareem_42:

(Start: 48 @31907 has 68 MA's), (76, 32021), (86, 32045), (Start: 92 @32075 has 7 MA's), (131, 32294), (132, 32297), (135, 32324), (143, 32393), (151, 32456), (156, 32474), (159, 32486), (177, 32576), (206, 32792), (207, 32798), (219, 32876), (227, 32924), (230, 32939),

Gene: Kari_45 Start: 31614, Stop: 32543, Start Num: 98

Candidate Starts for Kari_45:

(65, 31494), (Start: 98 @31614 has 58 MA's), (108, 31644), (114, 31698), (132, 31815), (135, 31842), (137, 31857), (143, 31911), (156, 31992), (175, 32094), (189, 32208), (202, 32280), (205, 32304), (206, 32307), (219, 32391), (225, 32430), (244, 32532),

Gene: Kasen3_42 Start: 31893, Stop: 32978, Start Num: 48

Candidate Starts for Kasen3_42:

(Start: 48 @31893 has 68 MA's), (76, 32007), (86, 32031), (Start: 92 @32061 has 7 MA's), (131, 32280), (132, 32283), (135, 32310), (143, 32379), (151, 32442), (156, 32460), (159, 32472), (177, 32562), (206, 32778), (207, 32784), (219, 32862), (227, 32910), (230, 32925),

Gene: KilKor_45 Start: 31877, Stop: 32803, Start Num: 98

Candidate Starts for KilKor_45:

(Start: 98 @31877 has 58 MA's), (108, 31904), (114, 31958), (132, 32075), (135, 32102), (137, 32117), (156, 32252), (159, 32264), (169, 32321), (177, 32360), (189, 32468), (193, 32498), (202, 32540), (205, 32564), (206, 32567), (219, 32651), (225, 32690), (244, 32792),

Gene: KimmyK_55 Start: 41637, Stop: 42485, Start Num: 96

Candidate Starts for KimmyK_55:

(Start: 96 @41637 has 106 MA's), (106, 41652), (239, 42465),

Gene: Kita_57 Start: 38849, Stop: 39724, Start Num: 96

Candidate Starts for Kita_57:

(74, 38768), (79, 38786), (Start: 83 @38795 has 1 MA's), (Start: 96 @38849 has 106 MA's), (130, 39044), (156, 39194), (178, 39317), (180, 39344), (192, 39452), (207, 39530),

Gene: Ksquared_45 Start: 31627, Stop: 32553, Start Num: 98

Candidate Starts for Ksquared_45:

(Start: 98 @31627 has 58 MA's), (108, 31654), (114, 31708), (132, 31825), (135, 31852), (137, 31867), (156, 32002), (159, 32014), (169, 32071), (177, 32110), (189, 32218), (193, 32248), (202, 32290), (205, 32314), (206, 32317), (219, 32401), (225, 32440), (244, 32542),

Gene: Lamberg_49 Start: 33560, Stop: 34423, Start Num: 96

Candidate Starts for Lamberg_49:

(Start: 83 @33506 has 1 MA's), (Start: 96 @33560 has 106 MA's), (113, 33632), (130, 33743), (146, 33854), (156, 33893), (177, 33995), (178, 34016), (180, 34043), (192, 34151), (207, 34229),

Gene: Langerak_46 Start: 31633, Stop: 32562, Start Num: 98

Candidate Starts for Langerak_46:

(65, 31513), (Start: 98 @31633 has 58 MA's), (108, 31663), (114, 31717), (132, 31834), (135, 31861), (137, 31876), (143, 31930), (156, 32011), (175, 32113), (189, 32227), (202, 32299), (205, 32323), (206, 32326), (219, 32410), (225, 32449), (244, 32551),

Gene: Lemuria_44 Start: 33756, Stop: 34844, Start Num: 48

Candidate Starts for Lemuria_44:

(28, 33666), (Start: 48 @33756 has 68 MA's), (72, 33849), (86, 33894), (100, 33948), (110, 33999), (119, 34050), (131, 34140), (135, 34170), (137, 34185), (151, 34302), (156, 34320), (159, 34332), (196, 34587), (202, 34614), (206, 34641), (212, 34671), (227, 34773), (234, 34806), (242, 34839),

Gene: Liefie_42 Start: 31905, Stop: 32990, Start Num: 48

Candidate Starts for Liefie_42:

(Start: 48 @31905 has 68 MA's), (76, 32019), (86, 32043), (Start: 92 @32073 has 7 MA's), (131, 32292), (132, 32295), (135, 32322), (143, 32391), (151, 32454), (156, 32472), (159, 32484), (201, 32760), (206, 32790), (219, 32874), (227, 32922), (230, 32937),

Gene: LilSpotty_63 Start: 38834, Stop: 39688, Start Num: 92

Candidate Starts for LilSpotty_63:

(Start: 92 @38834 has 7 MA's), (126, 38996), (130, 39029), (134, 39065), (146, 39140), (150, 39158), (156, 39179), (173, 39278), (175, 39281), (183, 39344), (185, 39359), (200, 39476), (209, 39527), (210, 39533), (215, 39563), (227, 39647),

Gene: Lilas_55 Start: 41222, Stop: 42097, Start Num: 96

Candidate Starts for Lilas_55:

(74, 41141), (79, 41159), (Start: 83 @41168 has 1 MA's), (Start: 96 @41222 has 106 MA's), (130, 41417), (156, 41567), (178, 41690), (180, 41717), (192, 41825), (207, 41903),

Gene: LonelyBoi_55 Start: 41380, Stop: 42243, Start Num: 96

Candidate Starts for LonelyBoi_55:

(20, 41026), (22, 41047), (55, 41227), (61, 41251), (Start: 96 @41380 has 106 MA's), (126, 41530), (130, 41563), (156, 41713), (177, 41815), (178, 41836), (180, 41863), (192, 41971), (203, 42019), (207, 42049),

Gene: LordFarquaad_53 Start: 35954, Stop: 36829, Start Num: 96

Candidate Starts for LordFarquaad_53:

(74, 35873), (79, 35891), (Start: 83 @35900 has 1 MA's), (Start: 96 @35954 has 106 MA's), (130, 36149), (146, 36260), (147, 36266), (156, 36299), (159, 36311), (165, 36338), (178, 36422), (180,

36449), (192, 36557), (202, 36602), (207, 36635),

Gene: LouisV14_44 Start: 34172, Stop: 35257, Start Num: 48

Candidate Starts for LouisV14_44:

(Start: 48 @34172 has 68 MA's), (76, 34286), (86, 34310), (Start: 92 @34340 has 7 MA's), (131, 34559), (132, 34562), (135, 34589), (143, 34658), (151, 34721), (156, 34739), (159, 34751), (177, 34841), (206, 35057), (207, 35063), (219, 35141), (227, 35189), (230, 35204),

Gene: MOOREtheMARYer_44 Start: 33458, Stop: 34549, Start Num: 48

Candidate Starts for MOOREtheMARYer_44:

(11, 33224), (Start: 48 @33458 has 68 MA's), (109, 33692), (127, 33806), (131, 33845), (132, 33848), (147, 33992), (151, 34007), (156, 34025), (188, 34229), (206, 34346), (227, 34478),

Gene: Madeline_57 Start: 40750, Stop: 41613, Start Num: 96

Candidate Starts for Madeline_57:

(Start: 96 @40750 has 106 MA's), (108, 40774), (113, 40822), (130, 40933), (146, 41044), (147, 41050), (156, 41083), (169, 41146), (178, 41206), (180, 41233), (192, 41341), (207, 41419),

Gene: Majeke_46 Start: 31658, Stop: 32587, Start Num: 98

Candidate Starts for Majeke_46:

(65, 31538), (Start: 98 @31658 has 58 MA's), (108, 31688), (114, 31742), (132, 31859), (135, 31886), (137, 31901), (143, 31955), (156, 32036), (175, 32138), (189, 32252), (202, 32324), (205, 32348), (206, 32351), (219, 32435), (225, 32474), (244, 32576),

Gene: MakCheese_63 Start: 41738, Stop: 42571, Start Num: 96

Candidate Starts for MakCheese_63:

(Start: 96 @41738 has 106 MA's), (126, 41879), (129, 41909), (136, 41951), (175, 42158), (178, 42185), (181, 42200),

Gene: Malibo_59 Start: 40468, Stop: 41298, Start Num: 96

Candidate Starts for Malibo_59:

(22, 40132), (30, 40207), (31, 40222), (36, 40237), (37, 40243), (41, 40261), (56, 40315), (63, 40339), (79, 40405), (82, 40411), (Start: 96 @40468 has 106 MA's), (167, 40846), (175, 40888), (178, 40915), (180, 40927),

Gene: Maliketh_42 Start: 31907, Stop: 32992, Start Num: 48

Candidate Starts for Maliketh_42:

(Start: 48 @31907 has 68 MA's), (76, 32021), (86, 32045), (Start: 92 @32075 has 7 MA's), (131, 32294), (132, 32297), (135, 32324), (143, 32393), (151, 32456), (156, 32474), (159, 32486), (177, 32576), (206, 32792), (207, 32798), (219, 32876), (227, 32924), (230, 32939),

Gene: Malithi_46 Start: 31533, Stop: 32462, Start Num: 98

Candidate Starts for Malithi_46:

(65, 31413), (Start: 98 @31533 has 58 MA's), (108, 31563), (114, 31617), (132, 31734), (135, 31761), (137, 31776), (143, 31830), (156, 31911), (175, 32013), (189, 32127), (202, 32199), (205, 32223), (206, 32226), (219, 32310), (225, 32349), (244, 32451),

Gene: Manasvini_57 Start: 38864, Stop: 39739, Start Num: 96

Candidate Starts for Manasvini_57:

(74, 38783), (79, 38801), (Start: 83 @38810 has 1 MA's), (Start: 96 @38864 has 106 MA's), (130, 39059), (156, 39209), (178, 39332), (180, 39359), (192, 39467), (207, 39545),

Gene: Mangethe_46 Start: 31658, Stop: 32587, Start Num: 98

Candidate Starts for Mangethe_46:

(65, 31538), (Start: 98 @31658 has 58 MA's), (108, 31688), (114, 31742), (132, 31859), (135, 31886), (137, 31901), (143, 31955), (156, 32036), (175, 32138), (189, 32252), (202, 32324), (205, 32348), (206, 32351), (219, 32435), (225, 32474), (244, 32576),

Gene: Mao1_64 Start: 47563, Stop: 48474, Start Num: 95

Candidate Starts for Mao1_64:

(Start: 95 @47563 has 2 MA's), (114, 47650), (116, 47665), (132, 47767), (135, 47794), (137, 47809), (141, 47854), (146, 47905), (156, 47944), (159, 47956), (175, 48040), (177, 48046), (186, 48127), (189, 48160), (190, 48178), (193, 48190), (195, 48196), (201, 48229), (202, 48232), (205, 48256), (206, 48259), (207, 48265), (225, 48382), (231, 48409), (243, 48454),

Gene: Maridalia_60 Start: 40096, Stop: 40959, Start Num: 96

Candidate Starts for Maridalia_60:

(20, 39742), (22, 39763), (55, 39943), (61, 39967), (Start: 96 @40096 has 106 MA's), (126, 40246), (130, 40279), (156, 40429), (178, 40552), (180, 40579), (192, 40687), (203, 40735), (207, 40765),

Gene: Marmie_42 Start: 31907, Stop: 32992, Start Num: 48

Candidate Starts for Marmie_42:

(Start: 48 @31907 has 68 MA's), (76, 32021), (86, 32045), (Start: 92 @32075 has 7 MA's), (131, 32294), (132, 32297), (135, 32324), (143, 32393), (151, 32456), (156, 32474), (159, 32486), (177, 32576), (206, 32792), (207, 32798), (219, 32876), (227, 32924), (230, 32939),

Gene: Marteena_55 Start: 39499, Stop: 40374, Start Num: 96

Candidate Starts for Marteena_55:

(36, 39268), (39, 39286), (46, 39304), (56, 39346), (60, 39364), (63, 39370), (74, 39418), (79, 39436), (Start: 83 @39445 has 1 MA's), (Start: 96 @39499 has 106 MA's), (113, 39583), (130, 39694), (146, 39805), (147, 39811), (156, 39844), (178, 39967), (180, 39994), (192, 40102), (207, 40180),

Gene: Matteo_46 Start: 32611, Stop: 33450, Start Num: 96

Candidate Starts for Matteo_46:

(78, 32548), (Start: 96 @32611 has 106 MA's), (129, 32782), (146, 32896), (150, 32914), (167, 32989), (171, 33022), (207, 33244),

Gene: Mbo4_46 Start: 35910, Stop: 36782, Start Num: 95

Candidate Starts for Mbo4_46:

(Start: 95 @35910 has 2 MA's), (Start: 103 @35925 has 7 MA's), (112, 35985), (117, 36015), (119, 36018), (146, 36231), (155, 36261), (156, 36270), (170, 36339), (179, 36402), (199, 36558), (219, 36684), (220, 36696),

Gene: Mcklovin_53 Start: 42095, Stop: 42934, Start Num: 96

Candidate Starts for Mcklovin_53:

(79, 42032), (Start: 83 @42041 has 1 MA's), (Start: 96 @42095 has 106 MA's), (110, 42143), (129, 42266), (146, 42380), (150, 42398), (207, 42728),

Gene: Megiddo_45 Start: 31877, Stop: 32803, Start Num: 98

Candidate Starts for Megiddo_45:

(Start: 98 @31877 has 58 MA's), (108, 31904), (114, 31958), (132, 32075), (135, 32102), (137, 32117), (156, 32252), (159, 32264), (169, 32321), (177, 32360), (189, 32468), (193, 32498), (202, 32540), (205, 32564), (206, 32567), (219, 32651), (225, 32690), (244, 32792),

Gene: Mendokysei_42 Start: 32149, Stop: 32979, Start Num: 104

Candidate Starts for Mendokysei_42:

(10, 31687), (18, 31774), (32, 31894), (66, 32023), (71, 32044), (Start: 104 @32149 has 7 MA's), (132, 32338), (135, 32365), (154, 32476), (177, 32578), (217, 32869),

Gene: Mercurio_45 Start: 34295, Stop: 35383, Start Num: 48

Candidate Starts for Mercurio_45:

(27, 34193), (28, 34202), (Start: 48 @34295 has 68 MA's), (86, 34433), (Start: 96 @34481 has 106 MA's), (100, 34487), (110, 34538), (131, 34679), (132, 34682), (137, 34724), (151, 34841), (156, 34859), (159, 34871), (201, 35150), (206, 35180), (216, 35237), (227, 35312), (242, 35378),

Gene: MichaelScott_54 Start: 37559, Stop: 38398, Start Num: 96

Candidate Starts for MichaelScott_54:

(77, 37496), (Start: 96 @37559 has 106 MA's), (110, 37607), (129, 37730), (146, 37844), (150, 37862), (207, 38192),

Gene: MichelleMyBell_47 Start: 31300, Stop: 32202, Start Num: 98

Candidate Starts for MichelleMyBell_47:

(33, 31054), (36, 31066), (54, 31132), (65, 31177), (Start: 98 @31300 has 58 MA's), (Start: 104 @31306 has 7 MA's), (108, 31324), (114, 31378), (128, 31462), (132, 31495), (133, 31498), (137, 31537), (143, 31591), (156, 31672), (175, 31774), (189, 31888), (195, 31924), (201, 31957), (202, 31960), (205, 31984), (206, 31987), (207, 31993), (225, 32110), (231, 32137), (243, 32182),

Gene: MidnightRain_71 Start: 37076, Stop: 37903, Start Num: 103

Candidate Starts for MidnightRain_71:

(93, 37055), (Start: 103 @37076 has 7 MA's), (119, 37163), (134, 37280), (151, 37379), (156, 37397), (160, 37412), (208, 37709), (240, 37892),

Gene: Misha28_64 Start: 40131, Stop: 40985, Start Num: 92

Candidate Starts for Misha28_64:

(Start: 92 @40131 has 7 MA's), (126, 40293), (130, 40326), (132, 40338), (134, 40362), (146, 40437), (150, 40455), (156, 40476), (175, 40578), (180, 40629), (183, 40641), (185, 40656), (200, 40773), (209, 40824), (210, 40830), (215, 40860), (227, 40944),

Gene: Mocha12_53 Start: 35051, Stop: 35914, Start Num: 96

Candidate Starts for Mocha12_53:

(Start: 83 @34997 has 1 MA's), (Start: 96 @35051 has 106 MA's), (113, 35123), (130, 35234), (146, 35345), (156, 35384), (177, 35486), (178, 35507), (180, 35534), (192, 35642), (207, 35720),

Gene: Mowgli_42 Start: 31907, Stop: 32992, Start Num: 48

Candidate Starts for Mowgli_42:

(Start: 48 @31907 has 68 MA's), (76, 32021), (86, 32045), (Start: 92 @32075 has 7 MA's), (131, 32294), (132, 32297), (135, 32324), (143, 32393), (151, 32456), (156, 32474), (159, 32486), (177, 32576), (206, 32792), (207, 32798), (219, 32876), (227, 32924), (230, 32939),

Gene: Mutzi_53 Start: 42017, Stop: 42850, Start Num: 107

Candidate Starts for Mutzi_53:

(Start: 107 @42017 has 9 MA's), (114, 42086), (116, 42101), (123, 42143), (132, 42203), (156, 42341), (169, 42404), (170, 42410), (189, 42569), (206, 42668),

Gene: Nairb_43 Start: 32597, Stop: 33427, Start Num: 104

Candidate Starts for Nairb_43:

(Start: 104 @32597 has 7 MA's), (132, 32786), (135, 32813), (154, 32924), (169, 32987), (196, 33191), (199, 33206),

Gene: Nazo_48 Start: 33708, Stop: 34655, Start Num: 98

Candidate Starts for Nazo_48:

(65, 33588), (Start: 98 @33708 has 58 MA's), (108, 33735), (114, 33789), (128, 33873), (132, 33906), (137, 33948), (146, 34044), (156, 34083), (175, 34185), (189, 34299), (190, 34317), (191, 34323), (193, 34329), (202, 34371), (205, 34395), (206, 34398), (219, 34482), (224, 34518), (225, 34521),

Gene: Necropolis_45 Start: 31689, Stop: 32618, Start Num: 98

Candidate Starts for Necropolis_45:

(65, 31569), (Start: 98 @31689 has 58 MA's), (108, 31719), (114, 31773), (132, 31890), (135, 31917), (137, 31932), (143, 31986), (156, 32067), (175, 32169), (189, 32283), (202, 32355), (205, 32379), (206, 32382), (219, 32466), (225, 32505), (244, 32607),

Gene: Neobush_56 Start: 38834, Stop: 39709, Start Num: 96

Candidate Starts for Neobush_56:

(74, 38753), (79, 38771), (Start: 83 @38780 has 1 MA's), (Start: 96 @38834 has 106 MA's), (130, 39029), (156, 39179), (178, 39302), (180, 39329), (192, 39437), (207, 39515),

Gene: Nettuno_49 Start: 33560, Stop: 34423, Start Num: 96

Candidate Starts for Nettuno_49:

(Start: 83 @33506 has 1 MA's), (Start: 96 @33560 has 106 MA's), (113, 33632), (130, 33743), (146, 33854), (156, 33893), (177, 33995), (178, 34016), (180, 34043), (192, 34151), (207, 34229),

Gene: Nubi_54 Start: 41034, Stop: 41882, Start Num: 96

Candidate Starts for Nubi_54:

(89, 41007), (Start: 96 @41034 has 106 MA's),

Gene: OctaviousRex_42 Start: 31907, Stop: 32992, Start Num: 48

Candidate Starts for OctaviousRex_42:

(Start: 48 @31907 has 68 MA's), (76, 32021), (86, 32045), (Start: 92 @32075 has 7 MA's), (131, 32294), (132, 32297), (135, 32324), (143, 32393), (151, 32456), (156, 32474), (159, 32486), (177, 32576), (206, 32792), (207, 32798), (219, 32876), (227, 32924), (230, 32939),

Gene: Ohgeesy_56 Start: 39515, Stop: 40390, Start Num: 96

Candidate Starts for Ohgeesy_56:

(23, 39200), (36, 39284), (39, 39302), (46, 39320), (56, 39362), (60, 39380), (63, 39386), (74, 39434), (79, 39452), (Start: 83 @39461 has 1 MA's), (Start: 96 @39515 has 106 MA's), (130, 39710), (147, 39827), (156, 39860), (169, 39923), (178, 39983), (180, 40010), (192, 40118), (207, 40196),

Gene: Olga_42 Start: 31907, Stop: 32992, Start Num: 48

Candidate Starts for Olga_42:

(Start: 48 @31907 has 68 MA's), (76, 32021), (86, 32045), (Start: 92 @32075 has 7 MA's), (131, 32294), (132, 32297), (135, 32324), (143, 32393), (151, 32456), (156, 32474), (159, 32486), (177, 32576), (206, 32792), (207, 32798), (219, 32876), (227, 32924), (230, 32939),

Gene: OnionKnight_39 Start: 28260, Stop: 29147, Start Num: 85

Candidate Starts for OnionKnight_39:

(64, 28182), (Start: 85 @28260 has 1 MA's), (88, 28272), (109, 28338), (128, 28461), (132, 28494), (155, 28623), (156, 28632), (176, 28737), (205, 28965), (209, 28983), (225, 29091), (232, 29133),

Gene: Oregano_57 Start: 37319, Stop: 38158, Start Num: 96

Candidate Starts for Oregano_57:

(77, 37256), (Start: 96 @37319 has 106 MA's), (110, 37367), (129, 37490), (146, 37604), (150, 37622), (207, 37952),

Gene: Pace1224_42 Start: 33012, Stop: 34091, Start Num: 48

Candidate Starts for Pace1224_42:

(Start: 48 @33012 has 68 MA's), (87, 33159), (127, 33360), (131, 33399), (132, 33402), (135, 33429), (151, 33561), (156, 33579), (159, 33591), (177, 33681), (188, 33783), (201, 33870), (206, 33900), (211, 33927), (227, 34032),

Gene: Paito_43 Start: 32145, Stop: 33233, Start Num: 48

Candidate Starts for Paito_43:

(17, 31989), (Start: 48 @32145 has 68 MA's), (76, 32259), (86, 32283), (111, 32406), (112, 32409), (113, 32415), (125, 32481), (131, 32532), (132, 32535), (135, 32562), (143, 32631), (151, 32694), (156, 32712), (159, 32724), (166, 32754), (177, 32814), (187, 32907), (192, 32964), (206, 33033), (217, 33102), (219, 33117), (227, 33165),

Gene: PantheRoc_59 Start: 40114, Stop: 40977, Start Num: 96

Candidate Starts for PantheRoc_59:

(55, 39958), (61, 39982), (80, 40054), (82, 40057), (Start: 83 @40060 has 1 MA's), (Start: 96 @40114 has 106 MA's), (130, 40297), (146, 40408), (147, 40414), (156, 40447), (169, 40510), (178, 40570), (180, 40597), (192, 40705), (207, 40783),

Gene: Peeb_42 Start: 31892, Stop: 32977, Start Num: 48

Candidate Starts for Peeb_42:

(Start: 48 @31892 has 68 MA's), (76, 32006), (86, 32030), (Start: 92 @32060 has 7 MA's), (131, 32279), (132, 32282), (135, 32309), (143, 32378), (151, 32441), (156, 32459), (159, 32471), (177, 32561), (206, 32777), (207, 32783), (219, 32861), (227, 32909), (230, 32924),

Gene: Periodt_42 Start: 31898, Stop: 32983, Start Num: 48

Candidate Starts for Periodt_42:

(Start: 48 @31898 has 68 MA's), (76, 32012), (86, 32036), (Start: 92 @32066 has 7 MA's), (131, 32285), (132, 32288), (135, 32315), (143, 32384), (151, 32447), (156, 32465), (159, 32477), (201, 32753), (206, 32783), (219, 32867), (227, 32915), (230, 32930),

Gene: Persistence_62 Start: 34633, Stop: 35460, Start Num: 103

Candidate Starts for Persistence_62:

(44, 34423), (65, 34501), (67, 34507), (94, 34609), (Start: 103 @34633 has 7 MA's), (147, 34921), (151, 34936), (156, 34954), (160, 34969), (174, 35047), (208, 35266), (240, 35449),

Gene: Phalm_45 Start: 31877, Stop: 32803, Start Num: 98

Candidate Starts for Phalm_45:

(Start: 98 @31877 has 58 MA's), (108, 31904), (114, 31958), (132, 32075), (135, 32102), (137, 32117), (156, 32252), (159, 32264), (169, 32321), (177, 32360), (189, 32468), (193, 32498), (202, 32540), (205, 32564), (206, 32567), (219, 32651), (225, 32690), (244, 32792),

Gene: Phayonce_46 Start: 33725, Stop: 34636, Start Num: 98

Candidate Starts for Phayonce_46:

(Start: 98 @33725 has 58 MA's), (Start: 104 @33734 has 7 MA's), (108, 33752), (114, 33806), (132, 33923), (135, 33950), (137, 33965), (146, 34061), (156, 34100), (159, 34112), (168, 34160), (175, 34202), (177, 34208), (186, 34289), (189, 34322), (190, 34340), (193, 34352), (195, 34358), (201, 34391), (202, 34394), (205, 34418), (206, 34421), (207, 34427), (225, 34544), (231, 34571), (243, 34616),

Gene: Phegasus_46 Start: 31625, Stop: 32554, Start Num: 98

Candidate Starts for Phegasus_46:

(65, 31505), (Start: 98 @31625 has 58 MA's), (108, 31655), (114, 31709), (132, 31826), (135, 31853), (137, 31868), (143, 31922), (156, 32003), (175, 32105), (189, 32219), (202, 32291), (205, 32315), (206, 32318), (219, 32402), (225, 32441), (244, 32543),

Gene: Philonius_47 Start: 30729, Stop: 31655, Start Num: 98

Candidate Starts for Philonius_47:

(Start: 98 @30729 has 58 MA's), (108, 30756), (114, 30810), (132, 30927), (135, 30954), (137, 30969), (156, 31104), (159, 31116), (169, 31173), (177, 31212), (189, 31320), (193, 31350), (202, 31392), (205, 31416), (206, 31419), (219, 31503), (225, 31542), (244, 31644),

Gene: Phineas_47 Start: 32470, Stop: 33396, Start Num: 98

Candidate Starts for Phineas_47:

(Start: 98 @32470 has 58 MA's), (108, 32497), (114, 32551), (132, 32668), (135, 32695), (137, 32710), (143, 32764), (156, 32845), (159, 32857), (169, 32914), (177, 32953), (189, 33061), (202, 33133), (205, 33157), (206, 33160), (219, 33244), (225, 33283), (244, 33385),

Gene: Phish_42 Start: 31907, Stop: 32992, Start Num: 48

Candidate Starts for Phish_42:

(Start: 48 @31907 has 68 MA's), (76, 32021), (86, 32045), (Start: 92 @32075 has 7 MA's), (131, 32294), (132, 32297), (135, 32324), (143, 32393), (151, 32456), (156, 32474), (159, 32486), (177, 32576), (206, 32792), (207, 32798), (219, 32876), (227, 32924), (230, 32939),

Gene: Phlop_53 Start: 41109, Stop: 41957, Start Num: 96

Candidate Starts for Phlop_53:

(Start: 96 @41109 has 106 MA's), (106, 41124), (239, 41937),

Gene: Phreak_42 Start: 31907, Stop: 32992, Start Num: 48

Candidate Starts for Phreak_42:

(Start: 48 @31907 has 68 MA's), (76, 32021), (86, 32045), (Start: 92 @32075 has 7 MA's), (131, 32294), (132, 32297), (135, 32324), (143, 32393), (151, 32456), (156, 32474), (159, 32486), (177, 32576), (206, 32792), (207, 32798), (219, 32876), (227, 32924), (230, 32939),

Gene: PhriskyACE_54 Start: 37457, Stop: 38290, Start Num: 96

Candidate Starts for PhriskyACE_54:

(79, 37394), (Start: 83 @37403 has 1 MA's), (Start: 96 @37457 has 106 MA's), (113, 37529), (126, 37598), (136, 37670), (175, 37877), (178, 37904), (181, 37919),

Gene: Pickett_49 Start: 33137, Stop: 34012, Start Num: 96

Candidate Starts for Pickett_49:

(74, 33056), (79, 33074), (Start: 83 @33083 has 1 MA's), (Start: 96 @33137 has 106 MA's), (130, 33332), (156, 33482), (178, 33605), (180, 33632), (192, 33740), (207, 33818),

Gene: PinkCoffee_56 Start: 41212, Stop: 42060, Start Num: 96

Candidate Starts for PinkCoffee_56:

(Start: 96 @41212 has 106 MA's), (106, 41227), (239, 42040),

Gene: PinkYoshi_42 Start: 31898, Stop: 32983, Start Num: 48

Candidate Starts for PinkYoshi_42:

(Start: 48 @31898 has 68 MA's), (76, 32012), (86, 32036), (Start: 92 @32066 has 7 MA's), (131, 32285), (132, 32288), (135, 32315), (143, 32384), (151, 32447), (156, 32465), (159, 32477), (177, 32567), (206, 32783), (207, 32789), (219, 32867), (227, 32915), (230, 32930),

Gene: Pinnie_42 Start: 33163, Stop: 34254, Start Num: 48

Candidate Starts for Pinnie_42:

(11, 32929), (Start: 48 @33163 has 68 MA's), (52, 33178), (87, 33310), (109, 33397), (127, 33511), (131, 33550), (132, 33553), (147, 33697), (151, 33712), (156, 33730), (159, 33742), (188, 33934), (206, 34051), (227, 34183),

Gene: Piper2020_67 Start: 41026, Stop: 41880, Start Num: 92

Candidate Starts for Piper2020_67:

(Start: 92 @41026 has 7 MA's), (126, 41188), (130, 41221), (132, 41233), (134, 41257), (146, 41332), (150, 41350), (156, 41371), (175, 41473), (180, 41524), (183, 41536), (185, 41551), (200, 41668), (209, 41719), (210, 41725), (215, 41755), (227, 41839),

Gene: Plagueis_42 Start: 31727, Stop: 32812, Start Num: 48

Candidate Starts for Plagueis_42:

(Start: 48 @31727 has 68 MA's), (76, 31841), (86, 31865), (Start: 92 @31895 has 7 MA's), (131, 32114), (132, 32117), (135, 32144), (143, 32213), (151, 32276), (156, 32294), (159, 32306), (177, 32396), (206, 32612), (207, 32618), (219, 32696), (227, 32744), (230, 32759),

Gene: Polkaroo_46 Start: 31651, Stop: 32550, Start Num: 108

Candidate Starts for Polkaroo_46:

(Start: 98 @31624 has 58 MA's), (108, 31651), (114, 31705), (132, 31822), (135, 31849), (137, 31864), (156, 31999), (177, 32107), (189, 32215), (193, 32245), (202, 32287), (205, 32311), (206, 32314), (219, 32398), (225, 32437), (244, 32539),

Gene: Pollux_59 Start: 41384, Stop: 42259, Start Num: 96

Candidate Starts for Pollux_59:

(8, 40919), (14, 40985), (25, 41078), (46, 41189), (56, 41231), (60, 41249), (63, 41255), (79, 41321), (Start: 83 @41330 has 1 MA's), (Start: 96 @41384 has 106 MA's), (126, 41546), (130, 41579), (146, 41690), (156, 41729), (180, 41879), (192, 41987), (207, 42065),

Gene: Polly_53 Start: 38283, Stop: 39158, Start Num: 96

Candidate Starts for Polly_53:

(74, 38202), (79, 38220), (Start: 83 @38229 has 1 MA's), (Start: 96 @38283 has 106 MA's), (130, 38478), (156, 38628), (178, 38751), (180, 38778), (192, 38886), (207, 38964),

Gene: Portcullis_55 Start: 40701, Stop: 41534, Start Num: 107

Candidate Starts for Portcullis_55:

(Start: 107 @40701 has 9 MA's), (114, 40770), (116, 40785), (123, 40827), (132, 40887), (156, 41025), (169, 41088), (170, 41094), (189, 41253), (206, 41352),

Gene: Posh_59 Start: 41292, Stop: 42122, Start Num: 96

Candidate Starts for Posh_59:

(Start: 96 @41292 has 106 MA's), (167, 41670), (175, 41712), (177, 41718), (178, 41739), (181, 41754),

Gene: Powerball_55 Start: 37583, Stop: 38416, Start Num: 96

Candidate Starts for Powerball_55:

(79, 37520), (Start: 83 @37529 has 1 MA's), (Start: 96 @37583 has 106 MA's), (113, 37655), (126, 37724), (136, 37796), (175, 38003), (178, 38030), (181, 38045),

Gene: PullumCavea_53 Start: 41109, Stop: 41957, Start Num: 96

Candidate Starts for PullumCavea_53:

(Start: 96 @41109 has 106 MA's), (239, 41937),

Gene: Purky_51 Start: 34107, Stop: 35051, Start Num: 98

Candidate Starts for Purky_51:

(47, 33915), (65, 33987), (Start: 98 @34107 has 58 MA's), (105, 34113), (108, 34131), (119, 34206), (123, 34242), (132, 34302), (137, 34344), (143, 34398), (146, 34440), (156, 34479), (159, 34491), (189, 34695), (206, 34794), (219, 34878), (224, 34914),

Gene: Pygmy_49 Start: 33934, Stop: 34860, Start Num: 98

Candidate Starts for Pygmy_49:

(Start: 98 @33934 has 58 MA's), (108, 33961), (114, 34015), (132, 34132), (135, 34159), (137, 34174), (143, 34228), (156, 34309), (159, 34321), (169, 34378), (177, 34417), (189, 34525), (202, 34597), (205, 34621), (206, 34624), (219, 34708), (225, 34747), (244, 34849),

Gene: Pytheas_59 Start: 42317, Stop: 43192, Start Num: 96

Candidate Starts for Pytheas_59:

(Start: 96 @42317 has 106 MA's), (130, 42512), (156, 42662), (177, 42764), (178, 42785), (180, 42812), (192, 42920), (207, 42998),

Gene: QueenHazel_43 Start: 31778, Stop: 32704, Start Num: 98

Candidate Starts for QueenHazel_43:

(26, 31481), (29, 31505), (43, 31574), (65, 31658), (Start: 98 @31778 has 58 MA's), (Start: 104 @31787 has 7 MA's), (108, 31805), (114, 31859), (132, 31976), (135, 32003), (137, 32018), (143, 32072), (146, 32114), (156, 32153), (169, 32222), (170, 32228), (175, 32255), (186, 32336), (189, 32369), (202, 32441), (205, 32465), (206, 32468), (219, 32552), (225, 32591), (244, 32693),

Gene: Rabbs_43 Start: 32095, Stop: 33180, Start Num: 48

Candidate Starts for Rabbs_43:

(7, 31795), (Start: 48 @32095 has 68 MA's), (86, 32233), (111, 32356), (131, 32482), (135, 32512), (143, 32581), (151, 32644), (156, 32662), (159, 32674), (177, 32764), (192, 32911), (206, 32980), (219, 33064), (227, 33112),

Gene: RadFad_73 Start: 37290, Stop: 38117, Start Num: 103

Candidate Starts for RadFad_73:

(93, 37269), (Start: 103 @37290 has 7 MA's), (119, 37377), (134, 37494), (151, 37593), (156, 37611), (160, 37626), (208, 37923), (240, 38106),

Gene: RavenCo17_53 Start: 38730, Stop: 39557, Start Num: 97

Candidate Starts for RavenCo17_53:

(Start: 97 @38730 has 2 MA's), (126, 38868), (148, 39021), (175, 39147), (177, 39153), (178, 39174), (181, 39189), (183, 39198),

Gene: Remy19_42 Start: 31907, Stop: 32992, Start Num: 48

Candidate Starts for Remy19_42:

(Start: 48 @31907 has 68 MA's), (76, 32021), (86, 32045), (Start: 92 @32075 has 7 MA's), (131, 32294), (132, 32297), (135, 32324), (143, 32393), (151, 32456), (156, 32474), (159, 32486), (177, 32576), (206, 32792), (207, 32798), (219, 32876), (227, 32924), (230, 32939),

Gene: Renaissance_42 Start: 31907, Stop: 32992, Start Num: 48

Candidate Starts for Renaissance_42:

(Start: 48 @31907 has 68 MA's), (76, 32021), (86, 32045), (Start: 92 @32075 has 7 MA's), (131, 32294), (132, 32297), (135, 32324), (143, 32393), (151, 32456), (156, 32474), (159, 32486), (177, 32576), (206, 32792), (207, 32798), (219, 32876), (227, 32924), (230, 32939),

Gene: RogerDodger_57 Start: 41231, Stop: 42079, Start Num: 96

Candidate Starts for RogerDodger_57:
(89, 41204), (Start: 96 @41231 has 106 MA's), (239, 42059),

Gene: RonRayGun_44 Start: 33043, Stop: 33873, Start Num: 104
Candidate Starts for RonRayGun_44:
(Start: 104 @33043 has 7 MA's), (132, 33232), (135, 33259), (154, 33370), (169, 33433), (196, 33637),
(199, 33652),

Gene: Ruthy_54 Start: 39658, Stop: 40491, Start Num: 96
Candidate Starts for Ruthy_54:
(79, 39595), (82, 39601), (Start: 96 @39658 has 106 MA's), (126, 39802), (167, 40039), (175, 40081),
(177, 40087), (178, 40108), (180, 40120),

Gene: Sahara_52 Start: 34798, Stop: 35661, Start Num: 96
Candidate Starts for Sahara_52:
(Start: 83 @34744 has 1 MA's), (Start: 96 @34798 has 106 MA's), (113, 34870), (130, 34981), (146,
35092), (156, 35131), (177, 35233), (178, 35254), (180, 35281), (192, 35389), (207, 35467),

Gene: Salvador_53 Start: 40927, Stop: 41775, Start Num: 96
Candidate Starts for Salvador_53:
(89, 40900), (Start: 96 @40927 has 106 MA's), (106, 40942),

Gene: Samman98_54 Start: 36185, Stop: 37024, Start Num: 96
Candidate Starts for Samman98_54:
(77, 36122), (Start: 96 @36185 has 106 MA's), (110, 36233), (129, 36356), (146, 36470), (150, 36488),
(207, 36818),

Gene: Savage_53 Start: 35051, Stop: 35914, Start Num: 96
Candidate Starts for Savage_53:
(Start: 83 @34997 has 1 MA's), (Start: 96 @35051 has 106 MA's), (113, 35123), (130, 35234), (146,
35345), (156, 35384), (177, 35486), (178, 35507), (180, 35534), (192, 35642), (207, 35720),

Gene: Savbucketdawg_53 Start: 40688, Stop: 41521, Start Num: 107
Candidate Starts for Savbucketdawg_53:
(Start: 107 @40688 has 9 MA's), (114, 40757), (116, 40772), (123, 40814), (132, 40874), (156, 41012),
(169, 41075), (170, 41081), (189, 41240), (206, 41339),

Gene: Sbash_57 Start: 40492, Stop: 41409, Start Num: 98
Candidate Starts for Sbash_57:
(Start: 98 @40492 has 58 MA's), (108, 40519), (114, 40573), (135, 40717), (137, 40732), (143, 40786),
(146, 40828), (156, 40867), (159, 40879), (175, 40969), (189, 41083), (194, 41116), (202, 41155),
(205, 41179), (206, 41182), (219, 41266), (225, 41305), (229, 41329), (244, 41398),

Gene: Schiebel_42 Start: 31892, Stop: 32977, Start Num: 48
Candidate Starts for Schiebel_42:
(Start: 48 @31892 has 68 MA's), (76, 32006), (86, 32030), (Start: 92 @32060 has 7 MA's), (131,
32279), (132, 32282), (135, 32309), (143, 32378), (151, 32441), (156, 32459), (159, 32471), (177,
32561), (206, 32777), (207, 32783), (219, 32861), (227, 32909), (230, 32924),

Gene: Seahorse_72 Start: 37934, Stop: 38800, Start Num: 91
Candidate Starts for Seahorse_72:
(34, 37712), (Start: 91 @37934 has 1 MA's), (94, 37937), (Start: 103 @37961 has 7 MA's), (109,
37991), (136, 38171), (147, 38249), (156, 38282), (160, 38297), (182, 38417), (206, 38585), (207,

38591), (224, 38702),

Gene: Sejanus_63 Start: 48683, Stop: 49585, Start Num: 95

Candidate Starts for Sejanus_63:

(Start: 95 @48683 has 2 MA's), (114, 48761), (132, 48878), (135, 48905), (137, 48920), (141, 48965), (146, 49016), (156, 49055), (159, 49067), (175, 49151), (189, 49271), (195, 49307), (201, 49340), (202, 49343), (205, 49367), (206, 49370), (207, 49376), (225, 49493), (231, 49520), (243, 49565),

Gene: Sekhmet_55 Start: 37219, Stop: 38082, Start Num: 96

Candidate Starts for Sekhmet_55:

(79, 37156), (Start: 96 @37219 has 106 MA's), (146, 37513), (156, 37552), (160, 37567), (178, 37675), (180, 37702), (182, 37708), (188, 37762), (192, 37810), (202, 37855), (203, 37858), (207, 37888),

Gene: ShaboiShabazz_42 Start: 31907, Stop: 32992, Start Num: 48

Candidate Starts for ShaboiShabazz_42:

(Start: 48 @31907 has 68 MA's), (76, 32021), (86, 32045), (Start: 92 @32075 has 7 MA's), (131, 32294), (132, 32297), (135, 32324), (143, 32393), (151, 32456), (156, 32474), (159, 32486), (177, 32576), (206, 32792), (207, 32798), (219, 32876), (227, 32924), (230, 32939),

Gene: Shinji_53 Start: 40451, Stop: 41284, Start Num: 107

Candidate Starts for Shinji_53:

(Start: 107 @40451 has 9 MA's), (114, 40520), (116, 40535), (123, 40577), (132, 40637), (156, 40775), (169, 40838), (170, 40844), (189, 41003), (206, 41102),

Gene: Shipwreck_49 Start: 33909, Stop: 34835, Start Num: 98

Candidate Starts for Shipwreck_49:

(Start: 98 @33909 has 58 MA's), (108, 33936), (114, 33990), (132, 34107), (135, 34134), (137, 34149), (143, 34203), (156, 34284), (159, 34296), (169, 34353), (177, 34392), (189, 34500), (202, 34572), (205, 34596), (206, 34599), (219, 34683), (225, 34722), (244, 34824),

Gene: Shlim410_55 Start: 40640, Stop: 41503, Start Num: 96

Candidate Starts for Shlim410_55:

(79, 40577), (Start: 96 @40640 has 106 MA's), (126, 40790), (130, 40823), (156, 40973), (161, 41000), (178, 41096), (180, 41123), (182, 41129), (207, 41309), (236, 41483),

Gene: Sidious_56 Start: 39609, Stop: 40484, Start Num: 96

Candidate Starts for Sidious_56:

(19, 39249), (36, 39378), (46, 39414), (56, 39456), (60, 39474), (63, 39480), (79, 39546), (Start: 83 @39555 has 1 MA's), (Start: 96 @39609 has 106 MA's), (126, 39771), (130, 39804), (146, 39915), (156, 39954), (178, 40077), (180, 40104), (192, 40212), (207, 40290), (217, 40353),

Gene: Silvy_45 Start: 31200, Stop: 32129, Start Num: 98

Candidate Starts for Silvy_45:

(51, 31029), (53, 31032), (60, 31065), (65, 31080), (Start: 98 @31200 has 58 MA's), (108, 31230), (114, 31284), (132, 31401), (135, 31428), (137, 31443), (143, 31497), (146, 31539), (156, 31578), (175, 31680), (189, 31794), (202, 31866), (205, 31890), (206, 31893), (219, 31977), (225, 32016), (244, 32118),

Gene: Sizemore_42 Start: 31893, Stop: 32978, Start Num: 48

Candidate Starts for Sizemore_42:

(Start: 48 @31893 has 68 MA's), (76, 32007), (86, 32031), (Start: 92 @32061 has 7 MA's), (131, 32280), (132, 32283), (135, 32310), (143, 32379), (151, 32442), (156, 32460), (159, 32472), (177, 32562), (206, 32778), (207, 32784), (219, 32862), (227, 32910), (230, 32925),

Gene: SkinnyPete_44 Start: 30665, Stop: 31612, Start Num: 98

Candidate Starts for SkinnyPete_44:

(Start: 98 @30665 has 58 MA's), (105, 30674), (108, 30692), (114, 30746), (132, 30863), (138, 30914), (146, 31001), (156, 31040), (159, 31052), (175, 31142), (182, 31199), (184, 31217), (187, 31241), (191, 31295), (193, 31301), (201, 31340), (202, 31343), (206, 31370), (207, 31376), (225, 31493), (244, 31595),

Gene: SmokingBunny_54 Start: 41020, Stop: 41868, Start Num: 96

Candidate Starts for SmokingBunny_54:

(89, 40993), (Start: 96 @41020 has 106 MA's),

Gene: Sneeze_43 Start: 32094, Stop: 33179, Start Num: 48

Candidate Starts for Sneeze_43:

(7, 31794), (Start: 48 @32094 has 68 MA's), (86, 32232), (111, 32355), (131, 32481), (135, 32511), (143, 32580), (151, 32643), (156, 32661), (159, 32673), (177, 32763), (192, 32910), (206, 32979), (219, 33063), (227, 33111),

Gene: SoilAssassin_51 Start: 35972, Stop: 36847, Start Num: 96

Candidate Starts for SoilAssassin_51:

(74, 35891), (79, 35909), (Start: 83 @35918 has 1 MA's), (Start: 96 @35972 has 106 MA's), (130, 36167), (146, 36278), (147, 36284), (156, 36317), (159, 36329), (165, 36356), (178, 36440), (180, 36467), (192, 36575), (202, 36620), (207, 36653),

Gene: Sonah_46 Start: 31603, Stop: 32532, Start Num: 98

Candidate Starts for Sonah_46:

(65, 31483), (Start: 98 @31603 has 58 MA's), (108, 31633), (114, 31687), (132, 31804), (135, 31831), (137, 31846), (143, 31900), (156, 31981), (159, 31993), (169, 32050), (177, 32089), (189, 32197), (202, 32269), (205, 32293), (206, 32296), (219, 32380), (225, 32419), (244, 32521),

Gene: Sparky_56 Start: 39597, Stop: 40523, Start Num: 83

Candidate Starts for Sparky_56:

(50, 39477), (Start: 62 @39522 has 1 MA's), (66, 39537), (Start: 83 @39597 has 1 MA's), (84, 39603), (134, 39864), (135, 39867), (137, 39882), (143, 39936), (146, 39978), (156, 40017), (159, 40029),

Gene: Sproutie_53 Start: 35051, Stop: 35914, Start Num: 96

Candidate Starts for Sproutie_53:

(Start: 83 @34997 has 1 MA's), (Start: 96 @35051 has 106 MA's), (113, 35123), (130, 35234), (146, 35345), (156, 35384), (177, 35486), (178, 35507), (180, 35534), (192, 35642), (207, 35720),

Gene: Stargaze_43 Start: 33184, Stop: 34263, Start Num: 48

Candidate Starts for Stargaze_43:

(15, 32989), (24, 33064), (Start: 48 @33184 has 68 MA's), (109, 33418), (127, 33532), (131, 33571), (140, 33652), (147, 33718), (151, 33733), (156, 33751), (159, 33763), (206, 34072), (207, 34078), (227, 34204),

Gene: StevieRay_45 Start: 31579, Stop: 32505, Start Num: 98

Candidate Starts for StevieRay_45:

(Start: 98 @31579 has 58 MA's), (108, 31606), (114, 31660), (132, 31777), (135, 31804), (137, 31819), (156, 31954), (159, 31966), (169, 32023), (177, 32062), (189, 32170), (193, 32200), (202, 32242), (205, 32266), (206, 32269), (219, 32353), (225, 32392), (244, 32494),

Gene: StressBall_45 Start: 31877, Stop: 32803, Start Num: 98

Candidate Starts for StressBall_45:

(Start: 98 @31877 has 58 MA's), (108, 31904), (114, 31958), (132, 32075), (135, 32102), (137, 32117), (156, 32252), (159, 32264), (169, 32321), (177, 32360), (189, 32468), (202, 32540), (205, 32564), (206, 32567), (219, 32651), (225, 32690), (244, 32792),

Gene: Suerte_50 Start: 36159, Stop: 36998, Start Num: 96

Candidate Starts for Suerte_50:

(79, 36096), (Start: 83 @36105 has 1 MA's), (Start: 96 @36159 has 106 MA's), (110, 36207), (129, 36330), (146, 36444), (150, 36462), (207, 36792),

Gene: Susceptit_56 Start: 38841, Stop: 39716, Start Num: 96

Candidate Starts for Susceptit_56:

(74, 38760), (79, 38778), (Start: 83 @38787 has 1 MA's), (Start: 96 @38841 has 106 MA's), (130, 39036), (156, 39186), (178, 39309), (180, 39336), (192, 39444), (207, 39522),

Gene: Sweets_42 Start: 31902, Stop: 32987, Start Num: 48

Candidate Starts for Sweets_42:

(Start: 48 @31902 has 68 MA's), (76, 32016), (86, 32040), (Start: 92 @32070 has 7 MA's), (131, 32289), (132, 32292), (135, 32319), (143, 32388), (151, 32451), (156, 32469), (159, 32481), (177, 32571), (206, 32787), (207, 32793), (219, 32871), (227, 32919), (230, 32934),

Gene: Taheera_41 Start: 31598, Stop: 32683, Start Num: 48

Candidate Starts for Taheera_41:

(7, 31322), (Start: 48 @31598 has 68 MA's), (86, 31736), (111, 31859), (131, 31985), (135, 32015), (143, 32084), (151, 32147), (156, 32165), (159, 32177), (177, 32267), (192, 32414), (206, 32483), (219, 32567), (227, 32615), (237, 32657),

Gene: Tayonia_56 Start: 38840, Stop: 39715, Start Num: 96

Candidate Starts for Tayonia_56:

(74, 38759), (79, 38777), (Start: 83 @38786 has 1 MA's), (Start: 96 @38840 has 106 MA's), (130, 39035), (156, 39185), (178, 39308), (180, 39335), (192, 39443), (207, 39521),

Gene: Techage_45 Start: 31643, Stop: 32572, Start Num: 98

Candidate Starts for Techage_45:

(65, 31523), (Start: 98 @31643 has 58 MA's), (108, 31673), (114, 31727), (132, 31844), (135, 31871), (137, 31886), (143, 31940), (156, 32021), (175, 32123), (189, 32237), (202, 32309), (205, 32333), (206, 32336), (219, 32420), (225, 32459), (244, 32561),

Gene: Terror_41 Start: 31598, Stop: 32683, Start Num: 48

Candidate Starts for Terror_41:

(7, 31322), (Start: 48 @31598 has 68 MA's), (86, 31736), (111, 31859), (131, 31985), (135, 32015), (143, 32084), (151, 32147), (156, 32165), (159, 32177), (177, 32267), (192, 32414), (206, 32483), (219, 32567), (227, 32615), (237, 32657),

Gene: ThankyouJordi_59 Start: 41692, Stop: 42531, Start Num: 96

Candidate Starts for ThankyouJordi_59:

(80, 41632), (Start: 83 @41638 has 1 MA's), (Start: 96 @41692 has 106 MA's), (129, 41863), (146, 41977), (150, 41995), (167, 42070), (207, 42325),

Gene: Thespis_45 Start: 31613, Stop: 32539, Start Num: 98

Candidate Starts for Thespis_45:

(Start: 98 @31613 has 58 MA's), (108, 31640), (114, 31694), (132, 31811), (135, 31838), (137, 31853), (156, 31988), (159, 32000), (169, 32057), (177, 32096), (189, 32204), (202, 32276), (205, 32300),

(206, 32303), (219, 32387), (225, 32426), (244, 32528),

Gene: Thimann_56 Start: 37603, Stop: 38442, Start Num: 96

Candidate Starts for Thimann_56:

(79, 37540), (Start: 83 @37549 has 1 MA's), (Start: 96 @37603 has 106 MA's), (110, 37651), (129, 37774), (146, 37888), (150, 37906), (207, 38236),

Gene: TillyBobJoe_56 Start: 42531, Stop: 43376, Start Num: 96

Candidate Starts for TillyBobJoe_56:

(89, 42504), (Start: 96 @42531 has 106 MA's), (153, 42849), (164, 42900), (206, 43167), (212, 43197),

Gene: TinaBug_42 Start: 31902, Stop: 32987, Start Num: 48

Candidate Starts for TinaBug_42:

(Start: 48 @31902 has 68 MA's), (76, 32016), (86, 32040), (Start: 92 @32070 has 7 MA's), (131, 32289), (132, 32292), (135, 32319), (143, 32388), (151, 32451), (156, 32469), (159, 32481), (177, 32571), (206, 32787), (207, 32793), (219, 32871), (227, 32919), (230, 32934),

Gene: Togo_53 Start: 41020, Stop: 41868, Start Num: 96

Candidate Starts for Togo_53:

(89, 40993), (Start: 96 @41020 has 106 MA's),

Gene: TomBrady_42 Start: 31908, Stop: 32993, Start Num: 48

Candidate Starts for TomBrady_42:

(Start: 48 @31908 has 68 MA's), (76, 32022), (86, 32046), (Start: 92 @32076 has 7 MA's), (131, 32295), (132, 32298), (135, 32325), (143, 32394), (151, 32457), (156, 32475), (159, 32487), (177, 32577), (206, 32793), (207, 32799), (219, 32877), (227, 32925), (230, 32940),

Gene: TootsiePop_64 Start: 40131, Stop: 40985, Start Num: 92

Candidate Starts for TootsiePop_64:

(Start: 92 @40131 has 7 MA's), (126, 40293), (130, 40326), (132, 40338), (134, 40362), (146, 40437), (150, 40455), (156, 40476), (175, 40578), (180, 40629), (183, 40641), (185, 40656), (200, 40773), (209, 40824), (210, 40830), (215, 40860), (227, 40944),

Gene: Tortellini_55 Start: 39104, Stop: 39952, Start Num: 92

Candidate Starts for Tortellini_55:

(Start: 92 @39104 has 7 MA's), (126, 39260), (130, 39293), (132, 39305), (134, 39329), (135, 39332), (146, 39404), (150, 39422), (156, 39443), (175, 39545), (180, 39596), (183, 39608), (185, 39623), (200, 39740), (209, 39791), (210, 39797), (215, 39827), (227, 39911),

Gene: Trumpet_56 Start: 38841, Stop: 39716, Start Num: 96

Candidate Starts for Trumpet_56:

(74, 38760), (79, 38778), (Start: 83 @38787 has 1 MA's), (Start: 96 @38841 has 106 MA's), (130, 39036), (156, 39186), (178, 39309), (180, 39336), (192, 39444), (207, 39522),

Gene: TuertoX_53 Start: 35051, Stop: 35914, Start Num: 96

Candidate Starts for TuertoX_53:

(Start: 83 @34997 has 1 MA's), (Start: 96 @35051 has 106 MA's), (113, 35123), (130, 35234), (146, 35345), (156, 35384), (177, 35486), (178, 35507), (180, 35534), (192, 35642), (207, 35720),

Gene: Twinkle_56 Start: 41699, Stop: 42562, Start Num: 96

Candidate Starts for Twinkle_56:

(79, 41636), (Start: 96 @41699 has 106 MA's), (126, 41849), (130, 41882), (156, 42032), (161, 42059), (178, 42155), (180, 42182), (182, 42188), (207, 42368), (236, 42542),

Gene: Twister6_56 Start: 40801, Stop: 41634, Start Num: 107

Candidate Starts for Twister6_56:

(Start: 107 @40801 has 9 MA's), (114, 40870), (116, 40885), (123, 40927), (132, 40987), (156, 41125), (169, 41188), (170, 41194), (189, 41353), (206, 41452),

Gene: Valary_56 Start: 41836, Stop: 42684, Start Num: 96

Candidate Starts for Valary_56:

(89, 41809), (Start: 96 @41836 has 106 MA's), (239, 42664),

Gene: VanDeWege_57 Start: 41128, Stop: 41976, Start Num: 96

Candidate Starts for VanDeWege_57:

(89, 41101), (Start: 96 @41128 has 106 MA's), (239, 41956),

Gene: Venti_46 Start: 31617, Stop: 32546, Start Num: 98

Candidate Starts for Venti_46:

(65, 31497), (Start: 98 @31617 has 58 MA's), (108, 31647), (114, 31701), (132, 31818), (135, 31845), (137, 31860), (143, 31914), (156, 31995), (175, 32097), (189, 32211), (202, 32283), (205, 32307), (206, 32310), (219, 32394), (225, 32433), (244, 32535),

Gene: Vidya_45 Start: 31650, Stop: 32579, Start Num: 98

Candidate Starts for Vidya_45:

(65, 31530), (Start: 98 @31650 has 58 MA's), (108, 31680), (114, 31734), (132, 31851), (135, 31878), (137, 31893), (143, 31947), (156, 32028), (175, 32130), (189, 32244), (202, 32316), (205, 32340), (206, 32343), (219, 32427), (225, 32466), (244, 32568),

Gene: Vopal_70 Start: 38758, Stop: 39585, Start Num: 103

Candidate Starts for Vopal_70:

(93, 38737), (Start: 103 @38758 has 7 MA's), (119, 38845), (134, 38962), (151, 39061), (156, 39079), (160, 39094), (208, 39391), (240, 39574),

Gene: WelcomeAyanna_59 Start: 41839, Stop: 42678, Start Num: 96

Candidate Starts for WelcomeAyanna_59:

(80, 41779), (Start: 83 @41785 has 1 MA's), (Start: 96 @41839 has 106 MA's), (129, 42010), (146, 42124), (150, 42142), (167, 42217), (207, 42472),

Gene: Wendigo_42 Start: 31907, Stop: 32992, Start Num: 48

Candidate Starts for Wendigo_42:

(Start: 48 @31907 has 68 MA's), (76, 32021), (86, 32045), (Start: 92 @32075 has 7 MA's), (131, 32294), (132, 32297), (135, 32324), (143, 32393), (151, 32456), (156, 32474), (159, 32486), (177, 32576), (206, 32792), (207, 32798), (219, 32876), (227, 32924), (230, 32939),

Gene: Whack_53 Start: 36342, Stop: 37211, Start Num: 99

Candidate Starts for Whack_53:

(31, 36096), (47, 36150), (50, 36165), (75, 36261), (Start: 99 @36342 has 1 MA's), (119, 36441), (128, 36504), (137, 36579), (139, 36600), (155, 36684), (156, 36693), (158, 36702), (162, 36726), (176, 36792), (182, 36849), (202, 36993), (218, 37095), (237, 37200), (238, 37203),

Gene: Whiteclaw_53 Start: 35051, Stop: 35914, Start Num: 96

Candidate Starts for Whiteclaw_53:

(Start: 83 @34997 has 1 MA's), (Start: 96 @35051 has 106 MA's), (113, 35123), (130, 35234), (146, 35345), (156, 35384), (177, 35486), (178, 35507), (180, 35534), (192, 35642), (207, 35720),

Gene: Whitty_43 Start: 32598, Stop: 33428, Start Num: 104

Candidate Starts for Whitty_43:

(Start: 104 @32598 has 7 MA's), (132, 32787), (135, 32814), (154, 32925), (169, 32988), (196, 33192), (199, 33207),

Gene: Willsammy_44 Start: 31360, Stop: 32286, Start Num: 98

Candidate Starts for Willsammy_44:

(Start: 98 @31360 has 58 MA's), (108, 31387), (114, 31441), (132, 31558), (135, 31585), (137, 31600), (156, 31735), (159, 31747), (169, 31804), (177, 31843), (189, 31951), (193, 31981), (202, 32023), (205, 32047), (206, 32050), (219, 32134), (225, 32173), (244, 32275),

Gene: WinkNick_56 Start: 36743, Stop: 37606, Start Num: 96

Candidate Starts for WinkNick_56:

(79, 36680), (Start: 96 @36743 has 106 MA's), (146, 37037), (156, 37076), (160, 37091), (178, 37199), (180, 37226), (182, 37232), (188, 37286), (192, 37334), (202, 37379), (203, 37382), (207, 37412),

Gene: Wizard_53 Start: 41034, Stop: 41882, Start Num: 96

Candidate Starts for Wizard_53:

(89, 41007), (Start: 96 @41034 has 106 MA's), (239, 41862),

Gene: Wrigley_61 Start: 40875, Stop: 41705, Start Num: 96

Candidate Starts for Wrigley_61:

(Start: 96 @40875 has 106 MA's), (167, 41253), (175, 41295), (177, 41301), (178, 41322), (181, 41337),

Gene: Xavia_52 Start: 38393, Stop: 39310, Start Num: 98

Candidate Starts for Xavia_52:

(Start: 98 @38393 has 58 MA's), (108, 38420), (114, 38474), (132, 38591), (146, 38729), (149, 38741), (156, 38768), (159, 38780), (168, 38828), (175, 38870), (182, 38927), (184, 38945), (187, 38969), (191, 39023), (193, 39029), (201, 39068), (202, 39071), (206, 39098), (207, 39104), (214, 39146), (225, 39221), (227, 39233), (235, 39260), (241, 39281),

Gene: Xeno_47 Start: 30955, Stop: 31881, Start Num: 98

Candidate Starts for Xeno_47:

(Start: 98 @30955 has 58 MA's), (108, 30982), (114, 31036), (132, 31153), (135, 31180), (137, 31195), (156, 31330), (159, 31342), (169, 31399), (177, 31438), (189, 31546), (202, 31618), (205, 31642), (206, 31645), (219, 31729), (225, 31768), (244, 31870),

Gene: Xula_42 Start: 31380, Stop: 32306, Start Num: 98

Candidate Starts for Xula_42:

(26, 31083), (29, 31107), (43, 31176), (65, 31260), (Start: 98 @31380 has 58 MA's), (Start: 104 @31389 has 7 MA's), (108, 31407), (114, 31461), (132, 31578), (135, 31605), (137, 31620), (143, 31674), (146, 31716), (156, 31755), (169, 31824), (170, 31830), (175, 31857), (186, 31938), (189, 31971), (202, 32043), (205, 32067), (206, 32070), (219, 32154), (225, 32193), (244, 32295),

Gene: Yeet412_51 Start: 35973, Stop: 36848, Start Num: 96

Candidate Starts for Yeet412_51:

(74, 35892), (79, 35910), (Start: 83 @35919 has 1 MA's), (Start: 96 @35973 has 106 MA's), (130, 36168), (156, 36318), (178, 36441), (180, 36468), (192, 36576), (207, 36654),

Gene: Yeezy_56 Start: 38295, Stop: 39125, Start Num: 96

Candidate Starts for Yeezy_56:

(Start: 96 @38295 has 106 MA's), (126, 38436), (167, 38673), (175, 38715), (177, 38721), (178, 38742), (180, 38754), (183, 38766),

Gene: YungMoney_56 Start: 44559, Stop: 45392, Start Num: 107

Candidate Starts for YungMoney_56:

(Start: 107 @44559 has 9 MA's), (114, 44628), (116, 44643), (123, 44685), (132, 44745), (156, 44883), (169, 44946), (170, 44952), (189, 45111), (206, 45210),

Gene: Zameen_56 Start: 38840, Stop: 39715, Start Num: 96

Candidate Starts for Zameen_56:

(74, 38759), (79, 38777), (Start: 83 @38786 has 1 MA's), (Start: 96 @38840 has 106 MA's), (130, 39035), (156, 39185), (178, 39308), (180, 39335), (192, 39443), (207, 39521),

Gene: ZenTime222_43 Start: 32597, Stop: 33427, Start Num: 104

Candidate Starts for ZenTime222_43:

(Start: 104 @32597 has 7 MA's), (132, 32786), (135, 32813), (154, 32924), (169, 32987), (196, 33191), (199, 33206),

Gene: Zilizebeth_46 Start: 31649, Stop: 32578, Start Num: 98

Candidate Starts for Zilizebeth_46:

(65, 31529), (Start: 98 @31649 has 58 MA's), (108, 31679), (114, 31733), (132, 31850), (135, 31877), (137, 31892), (143, 31946), (156, 32027), (175, 32129), (189, 32243), (202, 32315), (205, 32339), (206, 32342), (219, 32426), (225, 32465), (244, 32567),

Gene: Zirinka_53 Start: 39460, Stop: 40335, Start Num: 96

Candidate Starts for Zirinka_53:

(74, 39379), (79, 39397), (Start: 83 @39406 has 1 MA's), (Start: 96 @39460 has 106 MA's), (130, 39655), (156, 39805), (178, 39928), (180, 39955), (192, 40063), (207, 40141),

Gene: ZoMa_42 Start: 31907, Stop: 32992, Start Num: 48

Candidate Starts for ZoMa_42:

(Start: 48 @31907 has 68 MA's), (76, 32021), (86, 32045), (Start: 92 @32075 has 7 MA's), (131, 32294), (132, 32297), (135, 32324), (143, 32393), (151, 32456), (156, 32474), (159, 32486), (177, 32576), (206, 32792), (207, 32798), (219, 32876), (227, 32924), (230, 32939),

Gene: Zodiariah_57 Start: 41477, Stop: 42310, Start Num: 96

Candidate Starts for Zodiariah_57:

(44, 41279), (63, 41348), (65, 41357), (79, 41414), (Start: 96 @41477 has 106 MA's), (126, 41618), (136, 41690), (175, 41897), (178, 41924), (181, 41939),

Gene: Zombie_42 Start: 31907, Stop: 32992, Start Num: 48

Candidate Starts for Zombie_42:

(Start: 48 @31907 has 68 MA's), (76, 32021), (86, 32045), (Start: 92 @32075 has 7 MA's), (131, 32294), (132, 32297), (135, 32324), (143, 32393), (151, 32456), (156, 32474), (159, 32486), (177, 32576), (206, 32792), (207, 32798), (219, 32876), (227, 32924), (230, 32939),

Gene: Zucker_64 Start: 36175, Stop: 37002, Start Num: 103

Candidate Starts for Zucker_64:

(93, 36151), (Start: 103 @36175 has 7 MA's), (134, 36379), (145, 36442), (154, 36484), (156, 36496), (160, 36511), (161, 36523), (170, 36565), (174, 36589), (182, 36631), (184, 36649), (197, 36751), (201, 36769), (214, 36847), (222, 36910), (228, 36937),