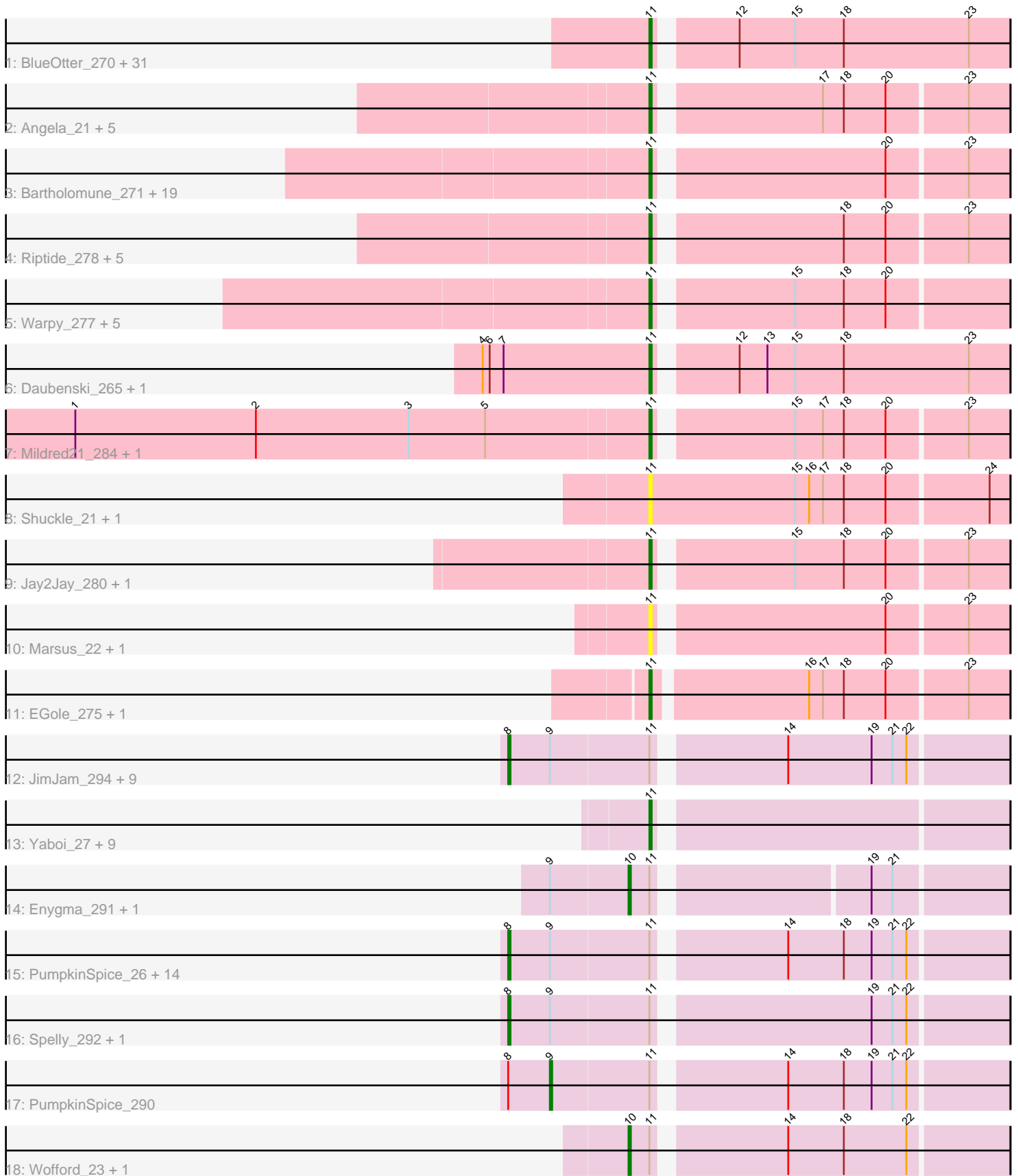


Pham 197934



Note: Tracks are now grouped by subcluster and scaled. Switching in subcluster is indicated by changes in track color. Track scale is now set by default to display the region 30 bp upstream of start 1 to 30 bp downstream of the last possible start. If this default region is judged to be packed too tightly with annotated starts, the track will be further scaled to only show that region of the ORF with annotated starts. This action will be indicated by adding "Zoomed" to the title. For starts, yellow indicates the location of called starts comprised solely of Glimmer/GeneMark auto-annotations, green indicates the location of called starts with at least 1 manual gene annotation.

Pham 197934 Report

This analysis was run 01/18/25 on database version 583.

Pham number 197934 has 124 members, 10 are drafts.

Phages represented in each track:

- Track 1 : BlueOtter_270, Cross_22, Leo04_273, HangryHippo_270, Watermoore_22, Peebs_269, Peebs_22, Scheme_276, Larnav_272, Lululemon_21, Pepperwood_23, Scheme_23, Cursive_274, Samisti12_20, Larnav_22, Pepperwood_272, Sushi23_23, Samisti12_271, Teutsch_268, BlueOtter_22, Leo04_22, Cursive_20, Cross_270, Watermoore_269, HangryHippo_22, Sushi23_273, PacManQ_268, Teutsch_21, Tribute_21, Lululemon_268, PacManQ_21, Tribute_267
- Track 2 : Angela_21, LilMartin_273, Angela_278, MulchMansion_21, MulchMansion_277, LilMartin_21
- Track 3 : Bartholomune_271, NootNoot_21, Persimmon_20, Navo_20, Squillium_21, Navo_262, WhereRU_20, Bartholomune_21, PinkiePie_21, NootNoot_266, Braelyn_266, Squillium_273, Liandry_270, Liandry_21, Paradiddles_262, WhereRU_269, Paradiddles_21, PinkiePie_271, Braelyn_21, Persimmon_271
- Track 4 : Riptide_278, Bmoc_20, Anedea_19, Riptide_21, Bmoc_276, Anedea_284
- Track 5 : Warpy_277, Evy_260, Evy_22, Targaryen_271, Targaryen_20, Warpy_25
- Track 6 : Daubenski_265, Daubenski_21
- Track 7 : Mildred21_284, Mildred21_21
- Track 8 : Shuckle_21, Shuckle_274
- Track 9 : Jay2Jay_280, Jay2Jay_25
- Track 10 : Marsus_22, Marsus_290
- Track 11 : EGole_275, EGole_21
- Track 12 : JimJam_294, LukeCage_289, LukeCage_26, JimJam_26, Jollison_26, Jollison_283, StarPlatinum_295, Spilled_25, StarPlatinum_25, Spilled_293
- Track 13 : Yaboi_27, BoomerJR_282, Stanimal_282, BoomerJR_27, Sollertia_283, Genie2_282, Genie2_27, Stanimal_27, Sollertia_27, Yaboi_287
- Track 14 : Enygma_291, Enygma_23
- Track 15 : PumpkinSpice_26, Karimac_284, KentuckyRacer_26, CeilingFan_303, Wipeout_25, Quarant19_26, CeilingFan_29, Birchlyn_283, KentuckyRacer_294, Karimac_26, Birchlyn_23, IchabodCrane_278, SaltySpittoon_26, Amabiko_26, Amabiko_290
- Track 16 : Spelly_292, Spelly_26
- Track 17 : PumpkinSpice_290
- Track 18 : Wofford_23, Wofford_281

Summary of Final Annotations (See graph section above for start numbers):

The start number called the most often in the published annotations is 11, it was called in 84 of the 114 non-draft genes in the pham.

Genes that call this "Most Annotated" start:

- Anedeia_19, Anedeia_284, Angela_21, Angela_278, Bartholomune_21, Bartholomune_271, BlueOtter_22, BlueOtter_270, Bmoc_20, Bmoc_276, BoomerJR_27, BoomerJR_282, Braelyn_21, Braelyn_266, Cross_22, Cross_270, Cursive_20, Cursive_274, Daubenski_21, Daubenski_265, EGole_21, EGole_275, Evy_22, Evy_260, Genie2_27, Genie2_282, HangryHippo_22, HangryHippo_270, Jay2Jay_25, Jay2Jay_280, Larnav_22, Larnav_272, Leo04_22, Leo04_273, Liandry_21, Liandry_270, LilMartin_21, LilMartin_273, Lululemon_21, Lululemon_268, Marsus_22, Marsus_290, Mildred21_21, Mildred21_284, MulchMansion_21, MulchMansion_277, Navo_20, Navo_262, NootNoot_21, NootNoot_266, PacManQ_21, PacManQ_268, Paradiddles_21, Paradiddles_262, Peebs_22, Peebs_269, Pepperwood_23, Pepperwood_272, Persimmon_20, Persimmon_271, PinkiePie_21, PinkiePie_271, Riptide_21, Riptide_278, Samisti12_20, Samisti12_271, Scheme_23, Scheme_276, Shuckle_21, Shuckle_274, Sollertia_27, Sollertia_283, Squillium_21, Squillium_273, Stanimal_27, Stanimal_282, Sushi23_23, Sushi23_273, Targaryen_20, Targaryen_271, Teutsch_21, Teutsch_268, Tribute_21, Tribute_267, Warpy_25, Warpy_277, Watermoore_22, Watermoore_269, WhereRU_20, WhereRU_269, Yaboi_27, Yaboi_287,

Genes that have the "Most Annotated" start but do not call it:

- Amabiko_26, Amabiko_290, Birchlyn_23, Birchlyn_283, CeilingFan_29, CeilingFan_303, Enygma_23, Enygma_291, IchabodCrane_278, JimJam_26, JimJam_294, Jollison_26, Jollison_283, Karimac_26, Karimac_284, KentuckyRacer_26, KentuckyRacer_294, LukeCage_26, LukeCage_289, PumpkinSpice_26, PumpkinSpice_290, Quarant19_26, SaltySpittoon_26, Spelly_26, Spelly_292, Spilled_25, Spilled_293, StarPlatinum_25, StarPlatinum_295, Wipeout_25, Wofford_23, Wofford_281,

Genes that do not have the "Most Annotated" start:

-

Summary by start number:

Start 8:

- Found in 28 of 124 (22.6%) of genes in pham
- Manual Annotations of this start: 25 of 114
- Called 96.4% of time when present
- Phage (with cluster) where this start called: Amabiko_26 (BE2), Amabiko_290 (BE2), Birchlyn_23 (BE2), Birchlyn_283 (BE2), CeilingFan_29 (BE2), CeilingFan_303 (BE2), IchabodCrane_278 (BE2), JimJam_26 (BE2), JimJam_294 (BE2), Jollison_26 (BE2), Jollison_283 (BE2), Karimac_26 (BE2), Karimac_284 (BE2), KentuckyRacer_26 (BE2), KentuckyRacer_294 (BE2), LukeCage_26 (BE2), LukeCage_289 (BE2), PumpkinSpice_26 (BE2), Quarant19_26 (BE2), SaltySpittoon_26 (BE2), Spelly_26 (BE2), Spelly_292 (BE2), Spilled_25 (BE2), Spilled_293 (BE2), StarPlatinum_25 (BE2), StarPlatinum_295 (BE2), Wipeout_25 (BE2),

Start 9:

- Found in 30 of 124 (24.2%) of genes in pham
- Manual Annotations of this start: 1 of 114

- Called 3.3% of time when present
- Phage (with cluster) where this start called: PumpkinSpice_290 (BE2),

Start 10:

- Found in 4 of 124 (3.2%) of genes in pham
- Manual Annotations of this start: 4 of 114
- Called 100.0% of time when present
- Phage (with cluster) where this start called: Enygma_23 (BE2), Enygma_291 (BE2), Wofford_23 (BE2), Wofford_281 (BE2),

Start 11:

- Found in 124 of 124 (100.0%) of genes in pham
- Manual Annotations of this start: 84 of 114
- Called 74.2% of time when present
- Phage (with cluster) where this start called: Anedea_19 (BE1), Anedea_284 (BE1), Angela_21 (BE1), Angela_278 (BE1), Bartholomune_21 (BE1), Bartholomune_271 (BE1), BlueOtter_22 (BE1), BlueOtter_270 (BE1), Bmoc_20 (BE1), Bmoc_276 (BE1), BoomerJR_27 (BE2), BoomerJR_282 (BE2), Braelyn_21 (BE1), Braelyn_266 (BE1), Cross_22 (BE1), Cross_270 (BE1), Cursive_20 (BE1), Cursive_274 (BE1), Daubenski_21 (BE1), Daubenski_265 (BE1), EGole_21 (BE1), EGole_275 (BE1), Evy_22 (BE1), Evy_260 (BE1), Genie2_27 (BE2), Genie2_282 (BE2), HangryHippo_22 (BE1), HangryHippo_270 (BE1), Jay2Jay_25 (BE1), Jay2Jay_280 (BE1), Larnav_22 (BE1), Larnav_272 (BE1), Leo04_22 (BE1), Leo04_273 (BE1), Liandry_21 (BE1), Liandry_270 (BE1), LilMartin_21 (BE1), LilMartin_273 (BE1), Lululemon_21 (BE1), Lululemon_268 (BE1), Marsus_22 (BE1), Marsus_290 (BE1), Mildred21_21 (BE1), Mildred21_284 (BE1), MulchMansion_21 (BE1), MulchMansion_277 (BE1), Navo_20 (BE1), Navo_262 (BE1), NootNoot_21 (BE1), NootNoot_266 (BE1), PacManQ_21 (BE1), PacManQ_268 (BE1), Paradiddles_21 (BE1), Paradiddles_262 (BE1), Peebs_22 (BE1), Peebs_269 (BE1), Pepperwood_23 (BE1), Pepperwood_272 (BE1), Persimmon_20 (BE1), Persimmon_271 (BE1), PinkiePie_21 (BE1), PinkiePie_271 (BE1), Riptide_21 (BE1), Riptide_278 (BE1), Samisti12_20 (BE1), Samisti12_271 (BE1), Scheme_23 (BE1), Scheme_276 (BE1), Shuckle_21 (BE1), Shuckle_274 (BE1), Sollertia_27 (BE2), Sollertia_283 (BE2), Squillium_21 (BE1), Squillium_273 (BE1), Stanimal_27 (BE2), Stanimal_282 (BE2), Sushi23_23 (BE1), Sushi23_273 (BE1), Targaryen_20 (BE1), Targaryen_271 (BE1), Teutsch_21 (BE1), Teutsch_268 (BE1), Tribute_21 (BE1), Tribute_267 (BE1), Warpy_25 (BE1), Warpy_277 (BE1), Watermoore_22 (BE1), Watermoore_269 (BE1), WhereRU_20 (BE1), WhereRU_269 (BE1), Yaboi_27 (BE2), Yaboi_287 (BE2),

Summary by clusters:

There are 2 clusters represented in this pham: BE2, BE1,

Info for manual annotations of cluster BE1:

- Start number 11 was manually annotated 74 times for cluster BE1.

Info for manual annotations of cluster BE2:

- Start number 8 was manually annotated 25 times for cluster BE2.
- Start number 9 was manually annotated 1 time for cluster BE2.
- Start number 10 was manually annotated 4 times for cluster BE2.
- Start number 11 was manually annotated 10 times for cluster BE2.

Gene Information:

Gene: Amabiko_26 Start: 11579, Stop: 11376, Start Num: 8

Candidate Starts for Amabiko_26:

(Start: 8 @11579 has 25 MA's), (Start: 9 @11561 has 1 MA's), (Start: 11 @11519 has 84 MA's), (14, 11468), (18, 11444), (19, 11432), (21, 11423), (22, 11417),

Gene: Amabiko_290 Start: 130405, Stop: 130202, Start Num: 8

Candidate Starts for Amabiko_290:

(Start: 8 @130405 has 25 MA's), (Start: 9 @130387 has 1 MA's), (Start: 11 @130345 has 84 MA's), (14, 130294), (18, 130270), (19, 130258), (21, 130249), (22, 130243),

Gene: Anedea_19 Start: 9329, Stop: 9186, Start Num: 11

Candidate Starts for Anedea_19:

(Start: 11 @9329 has 84 MA's), (18, 9254), (20, 9236), (23, 9203),

Gene: Anedea_284 Start: 132378, Stop: 132235, Start Num: 11

Candidate Starts for Anedea_284:

(Start: 11 @132378 has 84 MA's), (18, 132303), (20, 132285), (23, 132252),

Gene: Angela_21 Start: 10177, Stop: 10034, Start Num: 11

Candidate Starts for Angela_21:

(Start: 11 @10177 has 84 MA's), (17, 10111), (18, 10102), (20, 10084), (23, 10051),

Gene: Angela_278 Start: 132580, Stop: 132437, Start Num: 11

Candidate Starts for Angela_278:

(Start: 11 @132580 has 84 MA's), (17, 132514), (18, 132505), (20, 132487), (23, 132454),

Gene: Bartholomune_271 Start: 130869, Stop: 130726, Start Num: 11

Candidate Starts for Bartholomune_271:

(Start: 11 @130869 has 84 MA's), (20, 130776), (23, 130743),

Gene: Bartholomune_21 Start: 9770, Stop: 9627, Start Num: 11

Candidate Starts for Bartholomune_21:

(Start: 11 @9770 has 84 MA's), (20, 9677), (23, 9644),

Gene: Birchlyn_283 Start: 125515, Stop: 125312, Start Num: 8

Candidate Starts for Birchlyn_283:

(Start: 8 @125515 has 25 MA's), (Start: 9 @125497 has 1 MA's), (Start: 11 @125455 has 84 MA's), (14, 125404), (18, 125380), (19, 125368), (21, 125359), (22, 125353),

Gene: Birchlyn_23 Start: 9424, Stop: 9221, Start Num: 8

Candidate Starts for Birchlyn_23:

(Start: 8 @9424 has 25 MA's), (Start: 9 @9406 has 1 MA's), (Start: 11 @9364 has 84 MA's), (14, 9313), (18, 9289), (19, 9277), (21, 9268), (22, 9262),

Gene: BlueOtter_270 Start: 131120, Stop: 130974, Start Num: 11

Candidate Starts for BlueOtter_270:

(Start: 11 @131120 has 84 MA's), (12, 131090), (15, 131066), (18, 131045), (23, 130991),

Gene: BlueOtter_22 Start: 10033, Stop: 9887, Start Num: 11

Candidate Starts for BlueOtter_22:

(Start: 11 @10033 has 84 MA's), (12, 10003), (15, 9979), (18, 9958), (23, 9904),

Gene: Bmoc_20 Start: 9992, Stop: 9849, Start Num: 11
Candidate Starts for Bmoc_20:
(Start: 11 @9992 has 84 MA's), (18, 9917), (20, 9899), (23, 9866),

Gene: Bmoc_276 Start: 131814, Stop: 131671, Start Num: 11
Candidate Starts for Bmoc_276:
(Start: 11 @131814 has 84 MA's), (18, 131739), (20, 131721), (23, 131688),

Gene: BoomerJR_282 Start: 130205, Stop: 130062, Start Num: 11
Candidate Starts for BoomerJR_282:
(Start: 11 @130205 has 84 MA's),

Gene: BoomerJR_27 Start: 11417, Stop: 11274, Start Num: 11
Candidate Starts for BoomerJR_27:
(Start: 11 @11417 has 84 MA's),

Gene: Braelyn_266 Start: 130224, Stop: 130081, Start Num: 11
Candidate Starts for Braelyn_266:
(Start: 11 @130224 has 84 MA's), (20, 130131), (23, 130098),

Gene: Braelyn_21 Start: 9814, Stop: 9671, Start Num: 11
Candidate Starts for Braelyn_21:
(Start: 11 @9814 has 84 MA's), (20, 9721), (23, 9688),

Gene: CeilingFan_303 Start: 131982, Stop: 131779, Start Num: 8
Candidate Starts for CeilingFan_303:
(Start: 8 @131982 has 25 MA's), (Start: 9 @131964 has 1 MA's), (Start: 11 @131922 has 84 MA's),
(14, 131871), (18, 131847), (19, 131835), (21, 131826), (22, 131820),

Gene: CeilingFan_29 Start: 11375, Stop: 11172, Start Num: 8
Candidate Starts for CeilingFan_29:
(Start: 8 @11375 has 25 MA's), (Start: 9 @11357 has 1 MA's), (Start: 11 @11315 has 84 MA's), (14,
11264), (18, 11240), (19, 11228), (21, 11219), (22, 11213),

Gene: Cross_22 Start: 10034, Stop: 9888, Start Num: 11
Candidate Starts for Cross_22:
(Start: 11 @10034 has 84 MA's), (12, 10004), (15, 9980), (18, 9959), (23, 9905),

Gene: Cross_270 Start: 131766, Stop: 131620, Start Num: 11
Candidate Starts for Cross_270:
(Start: 11 @131766 has 84 MA's), (12, 131736), (15, 131712), (18, 131691), (23, 131637),

Gene: Cursive_274 Start: 130860, Stop: 130714, Start Num: 11
Candidate Starts for Cursive_274:
(Start: 11 @130860 has 84 MA's), (12, 130830), (15, 130806), (18, 130785), (23, 130731),

Gene: Cursive_20 Start: 8851, Stop: 8705, Start Num: 11
Candidate Starts for Cursive_20:
(Start: 11 @8851 has 84 MA's), (12, 8821), (15, 8797), (18, 8776), (23, 8722),

Gene: Daubenski_265 Start: 132056, Stop: 131910, Start Num: 11
Candidate Starts for Daubenski_265:

(4, 132128), (6, 132125), (7, 132119), (Start: 11 @132056 has 84 MA's), (12, 132026), (13, 132014), (15, 132002), (18, 131981), (23, 131927),

Gene: Daubenski_21 Start: 9680, Stop: 9534, Start Num: 11

Candidate Starts for Daubenski_21:

(4, 9752), (6, 9749), (7, 9743), (Start: 11 @9680 has 84 MA's), (12, 9650), (13, 9638), (15, 9626), (18, 9605), (23, 9551),

Gene: EGole_275 Start: 134640, Stop: 134494, Start Num: 11

Candidate Starts for EGole_275:

(Start: 11 @134640 has 84 MA's), (16, 134577), (17, 134571), (18, 134562), (20, 134544), (23, 134511),

Gene: EGole_21 Start: 10328, Stop: 10182, Start Num: 11

Candidate Starts for EGole_21:

(Start: 11 @10328 has 84 MA's), (16, 10265), (17, 10259), (18, 10250), (20, 10232), (23, 10199),

Gene: Enygma_291 Start: 132953, Stop: 132804, Start Num: 10

Candidate Starts for Enygma_291:

(Start: 9 @132986 has 1 MA's), (Start: 10 @132953 has 4 MA's), (Start: 11 @132944 has 84 MA's), (19, 132860), (21, 132851),

Gene: Enygma_23 Start: 10529, Stop: 10380, Start Num: 10

Candidate Starts for Enygma_23:

(Start: 9 @10562 has 1 MA's), (Start: 10 @10529 has 4 MA's), (Start: 11 @10520 has 84 MA's), (19, 10436), (21, 10427),

Gene: Evy_260 Start: 131968, Stop: 131825, Start Num: 11

Candidate Starts for Evy_260:

(Start: 11 @131968 has 84 MA's), (15, 131914), (18, 131893), (20, 131875),

Gene: Evy_22 Start: 10239, Stop: 10096, Start Num: 11

Candidate Starts for Evy_22:

(Start: 11 @10239 has 84 MA's), (15, 10185), (18, 10164), (20, 10146),

Gene: Genie2_282 Start: 130318, Stop: 130175, Start Num: 11

Candidate Starts for Genie2_282:

(Start: 11 @130318 has 84 MA's),

Gene: Genie2_27 Start: 11417, Stop: 11274, Start Num: 11

Candidate Starts for Genie2_27:

(Start: 11 @11417 has 84 MA's),

Gene: HangryHippo_270 Start: 131120, Stop: 130974, Start Num: 11

Candidate Starts for HangryHippo_270:

(Start: 11 @131120 has 84 MA's), (12, 131090), (15, 131066), (18, 131045), (23, 130991),

Gene: HangryHippo_22 Start: 10033, Stop: 9887, Start Num: 11

Candidate Starts for HangryHippo_22:

(Start: 11 @10033 has 84 MA's), (12, 10003), (15, 9979), (18, 9958), (23, 9904),

Gene: IchabodCrane_278 Start: 129721, Stop: 129518, Start Num: 8

Candidate Starts for IchabodCrane_278:

(Start: 8 @129721 has 25 MA's), (Start: 9 @129703 has 1 MA's), (Start: 11 @129661 has 84 MA's), (14, 129610), (18, 129586), (19, 129574), (21, 129565), (22, 129559),

Gene: Jay2Jay_280 Start: 132521, Stop: 132378, Start Num: 11

Candidate Starts for Jay2Jay_280:

(Start: 11 @132521 has 84 MA's), (15, 132467), (18, 132446), (20, 132428), (23, 132395),

Gene: Jay2Jay_25 Start: 10428, Stop: 10285, Start Num: 11

Candidate Starts for Jay2Jay_25:

(Start: 11 @10428 has 84 MA's), (15, 10374), (18, 10353), (20, 10335), (23, 10302),

Gene: JimJam_294 Start: 133114, Stop: 132911, Start Num: 8

Candidate Starts for JimJam_294:

(Start: 8 @133114 has 25 MA's), (Start: 9 @133096 has 1 MA's), (Start: 11 @133054 has 84 MA's), (14, 133003), (19, 132967), (21, 132958), (22, 132952),

Gene: JimJam_26 Start: 11578, Stop: 11375, Start Num: 8

Candidate Starts for JimJam_26:

(Start: 8 @11578 has 25 MA's), (Start: 9 @11560 has 1 MA's), (Start: 11 @11518 has 84 MA's), (14, 11467), (19, 11431), (21, 11422), (22, 11416),

Gene: Jollison_26 Start: 11579, Stop: 11376, Start Num: 8

Candidate Starts for Jollison_26:

(Start: 8 @11579 has 25 MA's), (Start: 9 @11561 has 1 MA's), (Start: 11 @11519 has 84 MA's), (14, 11468), (19, 11432), (21, 11423), (22, 11417),

Gene: Jollison_283 Start: 130254, Stop: 130051, Start Num: 8

Candidate Starts for Jollison_283:

(Start: 8 @130254 has 25 MA's), (Start: 9 @130236 has 1 MA's), (Start: 11 @130194 has 84 MA's), (14, 130143), (19, 130107), (21, 130098), (22, 130092),

Gene: Karimac_284 Start: 130900, Stop: 130697, Start Num: 8

Candidate Starts for Karimac_284:

(Start: 8 @130900 has 25 MA's), (Start: 9 @130882 has 1 MA's), (Start: 11 @130840 has 84 MA's), (14, 130789), (18, 130765), (19, 130753), (21, 130744), (22, 130738),

Gene: Karimac_26 Start: 11581, Stop: 11378, Start Num: 8

Candidate Starts for Karimac_26:

(Start: 8 @11581 has 25 MA's), (Start: 9 @11563 has 1 MA's), (Start: 11 @11521 has 84 MA's), (14, 11470), (18, 11446), (19, 11434), (21, 11425), (22, 11419),

Gene: KentuckyRacer_26 Start: 11376, Stop: 11173, Start Num: 8

Candidate Starts for KentuckyRacer_26:

(Start: 8 @11376 has 25 MA's), (Start: 9 @11358 has 1 MA's), (Start: 11 @11316 has 84 MA's), (14, 11265), (18, 11241), (19, 11229), (21, 11220), (22, 11214),

Gene: KentuckyRacer_294 Start: 132827, Stop: 132624, Start Num: 8

Candidate Starts for KentuckyRacer_294:

(Start: 8 @132827 has 25 MA's), (Start: 9 @132809 has 1 MA's), (Start: 11 @132767 has 84 MA's), (14, 132716), (18, 132692), (19, 132680), (21, 132671), (22, 132665),

Gene: Larnav_272 Start: 132039, Stop: 131893, Start Num: 11

Candidate Starts for Larnav_272:

(Start: 11 @132039 has 84 MA's), (12, 132009), (15, 131985), (18, 131964), (23, 131910),

Gene: Larnav_22 Start: 10034, Stop: 9888, Start Num: 11

Candidate Starts for Larnav_22:

(Start: 11 @10034 has 84 MA's), (12, 10004), (15, 9980), (18, 9959), (23, 9905),

Gene: Leo04_273 Start: 132150, Stop: 132004, Start Num: 11

Candidate Starts for Leo04_273:

(Start: 11 @132150 has 84 MA's), (12, 132120), (15, 132096), (18, 132075), (23, 132021),

Gene: Leo04_22 Start: 10032, Stop: 9886, Start Num: 11

Candidate Starts for Leo04_22:

(Start: 11 @10032 has 84 MA's), (12, 10002), (15, 9978), (18, 9957), (23, 9903),

Gene: Liandry_270 Start: 131290, Stop: 131147, Start Num: 11

Candidate Starts for Liandry_270:

(Start: 11 @131290 has 84 MA's), (20, 131197), (23, 131164),

Gene: Liandry_21 Start: 9769, Stop: 9626, Start Num: 11

Candidate Starts for Liandry_21:

(Start: 11 @9769 has 84 MA's), (20, 9676), (23, 9643),

Gene: LilMartin_273 Start: 131468, Stop: 131325, Start Num: 11

Candidate Starts for LilMartin_273:

(Start: 11 @131468 has 84 MA's), (17, 131402), (18, 131393), (20, 131375), (23, 131342),

Gene: LilMartin_21 Start: 10124, Stop: 9981, Start Num: 11

Candidate Starts for LilMartin_21:

(Start: 11 @10124 has 84 MA's), (17, 10058), (18, 10049), (20, 10031), (23, 9998),

Gene: LukeCage_289 Start: 132232, Stop: 132029, Start Num: 8

Candidate Starts for LukeCage_289:

(Start: 8 @132232 has 25 MA's), (Start: 9 @132214 has 1 MA's), (Start: 11 @132172 has 84 MA's), (14, 132121), (19, 132085), (21, 132076), (22, 132070),

Gene: LukeCage_26 Start: 11328, Stop: 11125, Start Num: 8

Candidate Starts for LukeCage_26:

(Start: 8 @11328 has 25 MA's), (Start: 9 @11310 has 1 MA's), (Start: 11 @11268 has 84 MA's), (14, 11217), (19, 11181), (21, 11172), (22, 11166),

Gene: Lululemon_21 Start: 9413, Stop: 9267, Start Num: 11

Candidate Starts for Lululemon_21:

(Start: 11 @9413 has 84 MA's), (12, 9383), (15, 9359), (18, 9338), (23, 9284),

Gene: Lululemon_268 Start: 130305, Stop: 130159, Start Num: 11

Candidate Starts for Lululemon_268:

(Start: 11 @130305 has 84 MA's), (12, 130275), (15, 130251), (18, 130230), (23, 130176),

Gene: Marsus_22 Start: 9981, Stop: 9838, Start Num: 11

Candidate Starts for Marsus_22:

(Start: 11 @9981 has 84 MA's), (20, 9888), (23, 9855),

Gene: Marsus_290 Start: 133685, Stop: 133542, Start Num: 11

Candidate Starts for Marsus_290:

(Start: 11 @133685 has 84 MA's), (20, 133592), (23, 133559),

Gene: Mildred21_284 Start: 130962, Stop: 130819, Start Num: 11

Candidate Starts for Mildred21_284:

(1, 131208), (2, 131130), (3, 131064), (5, 131031), (Start: 11 @130962 has 84 MA's), (15, 130908), (17, 130896), (18, 130887), (20, 130869), (23, 130836),

Gene: Mildred21_21 Start: 9804, Stop: 9661, Start Num: 11

Candidate Starts for Mildred21_21:

(1, 10050), (2, 9972), (3, 9906), (5, 9873), (Start: 11 @9804 has 84 MA's), (15, 9750), (17, 9738), (18, 9729), (20, 9711), (23, 9678),

Gene: MulchMansion_21 Start: 10125, Stop: 9982, Start Num: 11

Candidate Starts for MulchMansion_21:

(Start: 11 @10125 has 84 MA's), (17, 10059), (18, 10050), (20, 10032), (23, 9999),

Gene: MulchMansion_277 Start: 133103, Stop: 132960, Start Num: 11

Candidate Starts for MulchMansion_277:

(Start: 11 @133103 has 84 MA's), (17, 133037), (18, 133028), (20, 133010), (23, 132977),

Gene: Navo_20 Start: 9568, Stop: 9425, Start Num: 11

Candidate Starts for Navo_20:

(Start: 11 @9568 has 84 MA's), (20, 9475), (23, 9442),

Gene: Navo_262 Start: 129193, Stop: 129050, Start Num: 11

Candidate Starts for Navo_262:

(Start: 11 @129193 has 84 MA's), (20, 129100), (23, 129067),

Gene: NootNoot_21 Start: 9780, Stop: 9637, Start Num: 11

Candidate Starts for NootNoot_21:

(Start: 11 @9780 has 84 MA's), (20, 9687), (23, 9654),

Gene: NootNoot_266 Start: 130079, Stop: 129936, Start Num: 11

Candidate Starts for NootNoot_266:

(Start: 11 @130079 has 84 MA's), (20, 129986), (23, 129953),

Gene: PacManQ_268 Start: 130305, Stop: 130159, Start Num: 11

Candidate Starts for PacManQ_268:

(Start: 11 @130305 has 84 MA's), (12, 130275), (15, 130251), (18, 130230), (23, 130176),

Gene: PacManQ_21 Start: 9413, Stop: 9267, Start Num: 11

Candidate Starts for PacManQ_21:

(Start: 11 @9413 has 84 MA's), (12, 9383), (15, 9359), (18, 9338), (23, 9284),

Gene: Paradiddles_262 Start: 132476, Stop: 132333, Start Num: 11

Candidate Starts for Paradiddles_262:

(Start: 11 @132476 has 84 MA's), (20, 132383), (23, 132350),

Gene: Paradiddles_21 Start: 9768, Stop: 9625, Start Num: 11

Candidate Starts for Paradiddles_21:

(Start: 11 @9768 has 84 MA's), (20, 9675), (23, 9642),

Gene: Peebs_269 Start: 132006, Stop: 131860, Start Num: 11
Candidate Starts for Peebs_269:
(Start: 11 @132006 has 84 MA's), (12, 131976), (15, 131952), (18, 131931), (23, 131877),

Gene: Peebs_22 Start: 10031, Stop: 9885, Start Num: 11
Candidate Starts for Peebs_22:
(Start: 11 @10031 has 84 MA's), (12, 10001), (15, 9977), (18, 9956), (23, 9902),

Gene: Pepperwood_23 Start: 10186, Stop: 10040, Start Num: 11
Candidate Starts for Pepperwood_23:
(Start: 11 @10186 has 84 MA's), (12, 10156), (15, 10132), (18, 10111), (23, 10057),

Gene: Pepperwood_272 Start: 131971, Stop: 131825, Start Num: 11
Candidate Starts for Pepperwood_272:
(Start: 11 @131971 has 84 MA's), (12, 131941), (15, 131917), (18, 131896), (23, 131842),

Gene: Persimmon_20 Start: 9600, Stop: 9457, Start Num: 11
Candidate Starts for Persimmon_20:
(Start: 11 @9600 has 84 MA's), (20, 9507), (23, 9474),

Gene: Persimmon_271 Start: 130411, Stop: 130268, Start Num: 11
Candidate Starts for Persimmon_271:
(Start: 11 @130411 has 84 MA's), (20, 130318), (23, 130285),

Gene: PinkiePie_21 Start: 9770, Stop: 9627, Start Num: 11
Candidate Starts for PinkiePie_21:
(Start: 11 @9770 has 84 MA's), (20, 9677), (23, 9644),

Gene: PinkiePie_271 Start: 131291, Stop: 131148, Start Num: 11
Candidate Starts for PinkiePie_271:
(Start: 11 @131291 has 84 MA's), (20, 131198), (23, 131165),

Gene: PumpkinSpice_26 Start: 11579, Stop: 11376, Start Num: 8
Candidate Starts for PumpkinSpice_26:
(Start: 8 @11579 has 25 MA's), (Start: 9 @11561 has 1 MA's), (Start: 11 @11519 has 84 MA's), (14, 11468), (18, 11444), (19, 11432), (21, 11423), (22, 11417),

Gene: PumpkinSpice_290 Start: 131453, Stop: 131268, Start Num: 9
Candidate Starts for PumpkinSpice_290:
(Start: 8 @131471 has 25 MA's), (Start: 9 @131453 has 1 MA's), (Start: 11 @131411 has 84 MA's), (14, 131360), (18, 131336), (19, 131324), (21, 131315), (22, 131309),

Gene: Quaran19_26 Start: 11570, Stop: 11367, Start Num: 8
Candidate Starts for Quaran19_26:
(Start: 8 @11570 has 25 MA's), (Start: 9 @11552 has 1 MA's), (Start: 11 @11510 has 84 MA's), (14, 11459), (18, 11435), (19, 11423), (21, 11414), (22, 11408),

Gene: Riptide_278 Start: 131061, Stop: 130918, Start Num: 11
Candidate Starts for Riptide_278:
(Start: 11 @131061 has 84 MA's), (18, 130986), (20, 130968), (23, 130935),

Gene: Riptide_21 Start: 9609, Stop: 9466, Start Num: 11
Candidate Starts for Riptide_21:

(Start: 11 @9609 has 84 MA's), (18, 9534), (20, 9516), (23, 9483),

Gene: SaltySpittoon_26 Start: 11579, Stop: 11376, Start Num: 8

Candidate Starts for SaltySpittoon_26:

(Start: 8 @11579 has 25 MA's), (Start: 9 @11561 has 1 MA's), (Start: 11 @11519 has 84 MA's), (14, 11468), (18, 11444), (19, 11432), (21, 11423), (22, 11417),

Gene: Samisti12_20 Start: 9634, Stop: 9488, Start Num: 11

Candidate Starts for Samisti12_20:

(Start: 11 @9634 has 84 MA's), (12, 9604), (15, 9580), (18, 9559), (23, 9505),

Gene: Samisti12_271 Start: 132678, Stop: 132532, Start Num: 11

Candidate Starts for Samisti12_271:

(Start: 11 @132678 has 84 MA's), (12, 132648), (15, 132624), (18, 132603), (23, 132549),

Gene: Scheme_276 Start: 133380, Stop: 133234, Start Num: 11

Candidate Starts for Scheme_276:

(Start: 11 @133380 has 84 MA's), (12, 133350), (15, 133326), (18, 133305), (23, 133251),

Gene: Scheme_23 Start: 10185, Stop: 10039, Start Num: 11

Candidate Starts for Scheme_23:

(Start: 11 @10185 has 84 MA's), (12, 10155), (15, 10131), (18, 10110), (23, 10056),

Gene: Shuckle_21 Start: 10184, Stop: 10032, Start Num: 11

Candidate Starts for Shuckle_21:

(Start: 11 @10184 has 84 MA's), (15, 10121), (16, 10115), (17, 10109), (18, 10100), (20, 10082), (24, 10040),

Gene: Shuckle_274 Start: 132817, Stop: 132665, Start Num: 11

Candidate Starts for Shuckle_274:

(Start: 11 @132817 has 84 MA's), (15, 132754), (16, 132748), (17, 132742), (18, 132733), (20, 132715), (24, 132673),

Gene: Sollertia_283 Start: 130307, Stop: 130164, Start Num: 11

Candidate Starts for Sollertia_283:

(Start: 11 @130307 has 84 MA's),

Gene: Sollertia_27 Start: 11417, Stop: 11274, Start Num: 11

Candidate Starts for Sollertia_27:

(Start: 11 @11417 has 84 MA's),

Gene: Spelly_292 Start: 130383, Stop: 130180, Start Num: 8

Candidate Starts for Spelly_292:

(Start: 8 @130383 has 25 MA's), (Start: 9 @130365 has 1 MA's), (Start: 11 @130323 has 84 MA's), (19, 130236), (21, 130227), (22, 130221),

Gene: Spelly_26 Start: 11579, Stop: 11376, Start Num: 8

Candidate Starts for Spelly_26:

(Start: 8 @11579 has 25 MA's), (Start: 9 @11561 has 1 MA's), (Start: 11 @11519 has 84 MA's), (19, 11432), (21, 11423), (22, 11417),

Gene: Spilled_25 Start: 11189, Stop: 10986, Start Num: 8

Candidate Starts for Spilled_25:

(Start: 8 @11189 has 25 MA's), (Start: 9 @11171 has 1 MA's), (Start: 11 @11129 has 84 MA's), (14, 11078), (19, 11042), (21, 11033), (22, 11027),

Gene: Spilled_293 Start: 131658, Stop: 131455, Start Num: 8

Candidate Starts for Spilled_293:

(Start: 8 @131658 has 25 MA's), (Start: 9 @131640 has 1 MA's), (Start: 11 @131598 has 84 MA's), (14, 131547), (19, 131511), (21, 131502), (22, 131496),

Gene: Squillium_21 Start: 9769, Stop: 9626, Start Num: 11

Candidate Starts for Squillium_21:

(Start: 11 @9769 has 84 MA's), (20, 9676), (23, 9643),

Gene: Squillium_273 Start: 131293, Stop: 131150, Start Num: 11

Candidate Starts for Squillium_273:

(Start: 11 @131293 has 84 MA's), (20, 131200), (23, 131167),

Gene: Stanimal_282 Start: 130691, Stop: 130548, Start Num: 11

Candidate Starts for Stanimal_282:

(Start: 11 @130691 has 84 MA's),

Gene: Stanimal_27 Start: 11417, Stop: 11274, Start Num: 11

Candidate Starts for Stanimal_27:

(Start: 11 @11417 has 84 MA's),

Gene: StarPlatinum_295 Start: 132920, Stop: 132717, Start Num: 8

Candidate Starts for StarPlatinum_295:

(Start: 8 @132920 has 25 MA's), (Start: 9 @132902 has 1 MA's), (Start: 11 @132860 has 84 MA's), (14, 132809), (19, 132773), (21, 132764), (22, 132758),

Gene: StarPlatinum_25 Start: 11233, Stop: 11030, Start Num: 8

Candidate Starts for StarPlatinum_25:

(Start: 8 @11233 has 25 MA's), (Start: 9 @11215 has 1 MA's), (Start: 11 @11173 has 84 MA's), (14, 11122), (19, 11086), (21, 11077), (22, 11071),

Gene: Sushi23_23 Start: 10033, Stop: 9887, Start Num: 11

Candidate Starts for Sushi23_23:

(Start: 11 @10033 has 84 MA's), (12, 10003), (15, 9979), (18, 9958), (23, 9904),

Gene: Sushi23_273 Start: 132876, Stop: 132730, Start Num: 11

Candidate Starts for Sushi23_273:

(Start: 11 @132876 has 84 MA's), (12, 132846), (15, 132822), (18, 132801), (23, 132747),

Gene: Targaryen_271 Start: 133911, Stop: 133768, Start Num: 11

Candidate Starts for Targaryen_271:

(Start: 11 @133911 has 84 MA's), (15, 133857), (18, 133836), (20, 133818),

Gene: Targaryen_20 Start: 10235, Stop: 10092, Start Num: 11

Candidate Starts for Targaryen_20:

(Start: 11 @10235 has 84 MA's), (15, 10181), (18, 10160), (20, 10142),

Gene: Teutsch_268 Start: 131844, Stop: 131698, Start Num: 11

Candidate Starts for Teutsch_268:

(Start: 11 @131844 has 84 MA's), (12, 131814), (15, 131790), (18, 131769), (23, 131715),

Gene: Teutsch_21 Start: 9635, Stop: 9489, Start Num: 11
Candidate Starts for Teutsch_21:
(Start: 11 @9635 has 84 MA's), (12, 9605), (15, 9581), (18, 9560), (23, 9506),

Gene: Tribute_21 Start: 9886, Stop: 9740, Start Num: 11
Candidate Starts for Tribute_21:
(Start: 11 @9886 has 84 MA's), (12, 9856), (15, 9832), (18, 9811), (23, 9757),

Gene: Tribute_267 Start: 132430, Stop: 132284, Start Num: 11
Candidate Starts for Tribute_267:
(Start: 11 @132430 has 84 MA's), (12, 132400), (15, 132376), (18, 132355), (23, 132301),

Gene: Warpy_277 Start: 131987, Stop: 131844, Start Num: 11
Candidate Starts for Warpy_277:
(Start: 11 @131987 has 84 MA's), (15, 131933), (18, 131912), (20, 131894),

Gene: Warpy_25 Start: 10449, Stop: 10306, Start Num: 11
Candidate Starts for Warpy_25:
(Start: 11 @10449 has 84 MA's), (15, 10395), (18, 10374), (20, 10356),

Gene: Watermoore_22 Start: 10034, Stop: 9888, Start Num: 11
Candidate Starts for Watermoore_22:
(Start: 11 @10034 has 84 MA's), (12, 10004), (15, 9980), (18, 9959), (23, 9905),

Gene: Watermoore_269 Start: 132630, Stop: 132484, Start Num: 11
Candidate Starts for Watermoore_269:
(Start: 11 @132630 has 84 MA's), (12, 132600), (15, 132576), (18, 132555), (23, 132501),

Gene: WhereRU_20 Start: 9600, Stop: 9457, Start Num: 11
Candidate Starts for WhereRU_20:
(Start: 11 @9600 has 84 MA's), (20, 9507), (23, 9474),

Gene: WhereRU_269 Start: 130745, Stop: 130602, Start Num: 11
Candidate Starts for WhereRU_269:
(Start: 11 @130745 has 84 MA's), (20, 130652), (23, 130619),

Gene: Wipeout_25 Start: 11195, Stop: 10992, Start Num: 8
Candidate Starts for Wipeout_25:
(Start: 8 @11195 has 25 MA's), (Start: 9 @11177 has 1 MA's), (Start: 11 @11135 has 84 MA's), (14, 11084), (18, 11060), (19, 11048), (21, 11039), (22, 11033),

Gene: Wofford_23 Start: 10193, Stop: 10041, Start Num: 10
Candidate Starts for Wofford_23:
(Start: 10 @10193 has 4 MA's), (Start: 11 @10184 has 84 MA's), (14, 10133), (18, 10109), (22, 10082),

Gene: Wofford_281 Start: 131986, Stop: 131834, Start Num: 10
Candidate Starts for Wofford_281:
(Start: 10 @131986 has 4 MA's), (Start: 11 @131977 has 84 MA's), (14, 131926), (18, 131902), (22, 131875),

Gene: Yaboi_27 Start: 11417, Stop: 11274, Start Num: 11
Candidate Starts for Yaboi_27:

(Start: 11 @11417 has 84 MA's),

Gene: Yaboi_287 Start: 130235, Stop: 130092, Start Num: 11

Candidate Starts for Yaboi_287:

(Start: 11 @130235 has 84 MA's),