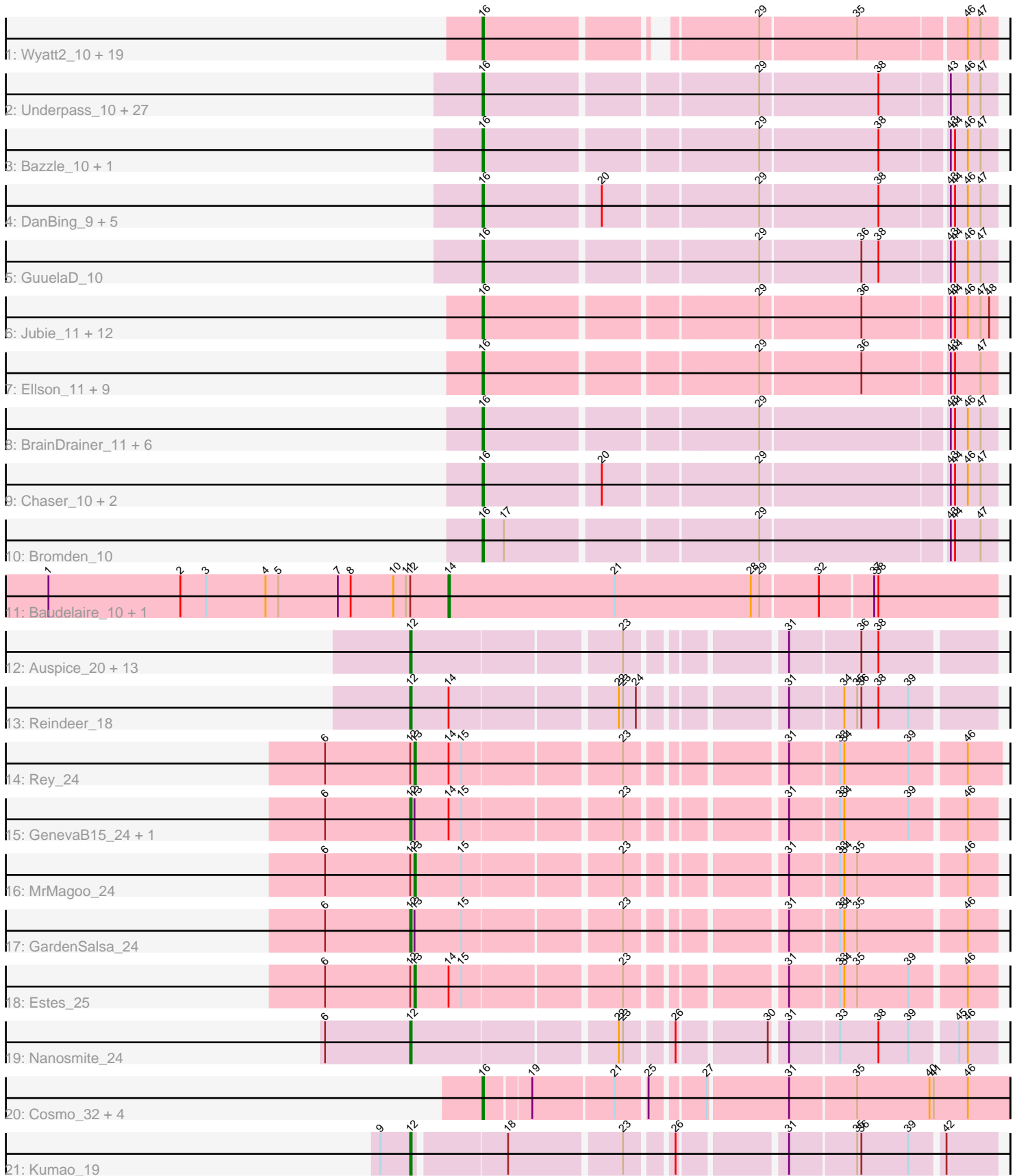


Pham 197940



Note: Tracks are now grouped by subcluster and scaled. Switching in subcluster is indicated by changes in track color. Track scale is now set by default to display the region 30 bp upstream of start 1 to 30 bp downstream of the last possible start. If this default region is judged to be packed too tightly with annotated starts, the track will be further scaled to only show that region of the ORF with annotated starts. This action will be indicated by adding "Zoomed" to the title. For starts, yellow indicates the location of called starts comprised solely of Glimmer/GeneMark auto-annotations, green indicates the location of called starts with at least 1 manual gene annotation.

Pham 197940 Report

This analysis was run 01/18/25 on database version 583.

Pham number 197940 has 121 members, 26 are drafts.

Phages represented in each track:

- Track 1 : Wyatt2_10, Zaria_10, Silverleaf_10, Appletree2_10, AvadaKedavra_10, Rose5_10, Acquire49_10, Tyson_10, LeBron_10, UPIE_10, Halena_10, CicholasNage_10, Enceladus_10, MAckerman_10, JoeDirt_10, Poochiewood_10, DirkDirk_10, OhShagHennessy_10, Wamburgxpress_10, Calm_10
- Track 2 : Underpass_10, Loadrie_10, BigCheese_10, LilDestine_10, MkaliMitinis3_10, Faith1_10, Miley16_10, DrSeegs_10, Lewan_10, Sarshaun_10, Wigglewiggles_10, Kahlid_10, Zakai_10, Gabriela_10, Hafay_10, Vetrix_10, Soap141_10, Nicholasp3_10, Crossroads_10, Winky_10, Breezons_10, Finemlucis_10, Itos_10, BobsGarage_10, Gardann_10, Rumpelstiltskin_10, Wilder_10, Netyap_10
- Track 3 : Bazzle_10, Archie_10
- Track 4 : DanBing_9, ZhongYanYuan_9, Tourach_10, Baoshan_9, DHan_10, Claus_10
- Track 5 : GuuelaD_10
- Track 6 : Jubie_11, Bellis_11, Kingsolomon_11, TriFive_11, MsGreen_11, Snenia_11, Finnry_11, Moostard_11, Jobypre_11, Nicholas_11, Clautastrophe_11, Samty_11, Lumos_11
- Track 7 : Ellson_11, Krypton555_11, BourbonZero_10, LiyuLake_11, DuncansLeg_11, MiniMac_11, Lolly9_11, KirDoubleO7_9, MiniLon_11, Whirlwind_12
- Track 8 : BrainDrainer_11, FarmResident_10, Douzhi_10, Sheng711_10, PYPDinur_10, Kropertea_10, DyoEdafos_11
- Track 9 : Chaser_10, Douge_10, Quby_10
- Track 10 : Bromden_10
- Track 11 : Baudelaire_10, Aegeus_10
- Track 12 : Auspice_20, TyDawg_20, IPhane7_20, Izel_19, Skinny_21, Glaske16_21, LilhomieP_19, Bongo_20, PegLeg_20, Bricole_20, SlimJimmy_19, Dulcita_21, Diminimus_21, FreakyGoo_20
- Track 13 : Reindeer_18
- Track 14 : Rey_24
- Track 15 : GenevaB15_24, Aziz_24
- Track 16 : MrMagoo_24
- Track 17 : GardenSalsa_24
- Track 18 : Estes_25
- Track 19 : Nanosmite_24
- Track 20 : Cosmo_32, MaryV_32, Wildcat_32, Azrael100_31, EniyanLRS_29
- Track 21 : Kumao_19

Summary of Final Annotations (See graph section above for start numbers):

The start number called the most often in the published annotations is 16, it was called in 72 of the 95 non-draft genes in the pham.

Genes that call this "Most Annotated" start:

- Acquire49_10, Appletree2_10, Archie_10, AvadaKedavra_10, Azrael100_31, Baoshan_9, Bazzle_10, Bellis_11, BigCheese_10, BobsGarage_10, BourbonZero_10, BrainDrainer_11, Breezona_10, Bromden_10, Calm_10, Chaser_10, CicholasNage_10, Claus_10, Clautastrophe_11, Cosmo_32, Crossroads_10, DHan_10, DanBing_9, DirkDirk_10, Douge_10, Douzhi_10, DrSeegs_10, DuncansLeg_11, DyoEdafos_11, Ellson_11, Enceladus_10, EniyanLRS_29, Faith1_10, FarmResident_10, Finemlucis_10, Finnry_11, Gabriela_10, Gardann_10, GuuelaD_10, Hafay_10, Halena_10, Itos_10, Jobypre_11, JoeDirt_10, Jubie_11, Kahlid_10, Kingsolomon_11, KirDoubleO7_9, Kropertea_10, Krypton555_11, LeBron_10, Lewan_10, LilDestine_10, LiyuLake_11, Loadrie_10, Lolly9_11, Lumos_11, MAckerman_10, MaryV_32, Miley16_10, MiniLon_11, MiniMac_11, MkaliMitinis3_10, Moostard_11, MsGreen_11, Netyap_10, Nicholas_11, Nicholasp3_10, OhShagHennessy_10, PYPDinur_10, Pochiewood_10, Quby_10, Rose5_10, Rumpelstiltskin_10, Samty_11, Sarshaun_10, Sheng711_10, Silverleaf_10, Slenia_11, Soap141_10, Tourach_10, TriFive_11, Tyson_10, UPIE_10, Underpass_10, Vetrix_10, Wamburggrxpress_10, Whirlwind_12, Wigglewiggles_10, Wildcat_32, Wilder_10, Winky_10, Wyatt2_10, Zakai_10, Zaria_10, ZhongYanYuan_9,

Genes that have the "Most Annotated" start but do not call it:

-

Genes that do not have the "Most Annotated" start:

- Aegeus_10, Auspice_20, Aziz_24, Baudelaire_10, Bongo_20, Bricole_20, Diminimus_21, Dulcita_21, Estes_25, FreakyGoo_20, GardenSalsa_24, GenevaB15_24, Glaske16_21, IPhane7_20, Izel_19, Kumao_19, LilhomieP_19, MrMagoo_24, Nanosmite_24, PegLeg_20, Reindeer_18, Rey_24, Skinny_21, SlimJimmy_19, TyDawg_20,

Summary by start number:

Start 12:

- Found in 25 of 121 (20.7%) of genes in pham
- Manual Annotations of this start: 18 of 95
- Called 80.0% of time when present
- Phage (with cluster) where this start called: Auspice_20 (M1), Aziz_24 (M2), Bongo_20 (M1), Bricole_20 (M1), Diminimus_21 (M1), Dulcita_21 (M1), FreakyGoo_20 (M1), GardenSalsa_24 (M2), GenevaB15_24 (M2), Glaske16_21 (M1), IPhane7_20 (M1), Izel_19 (M1), Kumao_19 (singleton), LilhomieP_19 (M1), Nanosmite_24 (M3), PegLeg_20 (M1), Reindeer_18 (M1), Skinny_21 (M1), SlimJimmy_19 (M1), TyDawg_20 (M1),

Start 13:

- Found in 6 of 121 (5.0%) of genes in pham

- Manual Annotations of this start: 3 of 95
- Called 50.0% of time when present
- Phage (with cluster) where this start called: Estes_25 (M2), MrMagoo_24 (M2), Rey_24 (M2),

Start 14:

- Found in 7 of 121 (5.8%) of genes in pham
- Manual Annotations of this start: 2 of 95
- Called 28.6% of time when present
- Phage (with cluster) where this start called: Aegeus_10 (L5), Baudelaire_10 (L5),

Start 16:

- Found in 96 of 121 (79.3%) of genes in pham
- Manual Annotations of this start: 72 of 95
- Called 100.0% of time when present
- Phage (with cluster) where this start called: Acquire49_10 (L1), Appletree2_10 (L1), Archie_10 (L2), AvadaKedavra_10 (L1), Azrael100_31 (V), Baoshan_9 (L2), Bazzle_10 (L2), Bellis_11 (L3), BigCheese_10 (L2), BobsGarage_10 (L2), BourbonZero_10 (L3), BrainDrainer_11 (L4), Breezona_10 (L2), Bromden_10 (L4), Calm_10 (L1), Chaser_10 (L4), CicholasNage_10 (L1), Claus_10 (L2), Clautastrophe_11 (L3), Cosmo_32 (V), Crossroads_10 (L2), DHan_10 (L2), DanBing_9 (L2), DirkDirk_10 (L1), Douge_10 (L4), Douzhi_10 (L4), DrSeegs_10 (L2), DuncansLeg_11 (L3), DyoEdafos_11 (L4), Ellson_11 (L3), Enceladus_10 (L1), EniyanLRS_29 (V), Faith1_10 (L2), FarmResident_10 (L4), Finemlucis_10 (L2), Finnry_11 (L3), Gabriela_10 (L2), Gardann_10 (L2), GuuelaD_10 (L2), Hafay_10 (L2), Halena_10 (L1), Itos_10 (L2), Jobypre_11 (L3), JoeDirt_10 (L1), Jubie_11 (L3), Kahlid_10 (L2), Kingsolomon_11 (L3), KirDoubleO7_9 (L3), Kropertea_10 (L4), Krypton555_11 (L3), LeBron_10 (L1), Lewan_10 (L2), LilDestine_10 (L2), LiyuLake_11 (L3), Loadrie_10 (L2), Lolly9_11 (L3), Lumos_11 (L3), MAckerman_10 (L1), MaryV_32 (V), Miley16_10 (L2), MiniLon_11 (L3), MiniMac_11 (L3), MkaliMitinis3_10 (L2), Moostard_11 (L3), MsGreen_11 (L3), Netyap_10 (L2), Nicholas_11 (L3), Nicholasp3_10 (L2), OhShagHennessy_10 (L1), PYPDinur_10 (L4), Poochiewood_10 (L1), Quby_10 (L4), Rose5_10 (L1), Rumpelstiltskin_10 (L2), Samty_11 (L3), Sarshaun_10 (L2), Sheng711_10 (L4), Silverleaf_10 (L1), Snenia_11 (L3), Soap141_10 (L2), Tourach_10 (L2), TriFive_11 (L3), Tyson_10 (L1), UPIE_10 (L1), Underpass_10 (L2), Vatrix_10 (L2), Wamburggrxpress_10 (L1), Whirlwind_12 (L3), Wigglewiggles_10 (L2), Wildcat_32 (V), Wilder_10 (L2), Winky_10 (L2), Wyatt2_10 (L1), Zakai_10 (L2), Zaria_10 (L1), ZhongYanYuan_9 (L2),

Summary by clusters:

There are 10 clusters represented in this pham: V, L1, singleton, L4, L5, L2, L3, M3, M2, M1,

Info for manual annotations of cluster L1:

- Start number 16 was manually annotated 19 times for cluster L1.

Info for manual annotations of cluster L2:

- Start number 16 was manually annotated 28 times for cluster L2.

Info for manual annotations of cluster L3:

- Start number 16 was manually annotated 16 times for cluster L3.

Info for manual annotations of cluster L4:

- Start number 16 was manually annotated 4 times for cluster L4.

Info for manual annotations of cluster L5:

- Start number 14 was manually annotated 2 times for cluster L5.

Info for manual annotations of cluster M1:

- Start number 12 was manually annotated 13 times for cluster M1.

Info for manual annotations of cluster M2:

- Start number 12 was manually annotated 3 times for cluster M2.
- Start number 13 was manually annotated 3 times for cluster M2.

Info for manual annotations of cluster M3:

- Start number 12 was manually annotated 1 time for cluster M3.

Info for manual annotations of cluster V:

- Start number 16 was manually annotated 5 times for cluster V.

Gene Information:

Gene: Acquire49_10 Start: 7710, Stop: 8033, Start Num: 16

Candidate Starts for Acquire49_10:

(Start: 16 @7710 has 72 MA's), (29, 7875), (35, 7941), (46, 8013), (47, 8022),

Gene: Aegeus_10 Start: 7298, Stop: 7678, Start Num: 14

Candidate Starts for Aegeus_10:

(1, 7016), (2, 7109), (3, 7127), (4, 7169), (5, 7178), (7, 7220), (8, 7229), (10, 7259), (11, 7268), (Start: 12 @7271 has 18 MA's), (Start: 14 @7298 has 2 MA's), (21, 7415), (28, 7511), (29, 7517), (32, 7556), (37, 7592), (38, 7595),

Gene: Appletree2_10 Start: 7684, Stop: 8007, Start Num: 16

Candidate Starts for Appletree2_10:

(Start: 16 @7684 has 72 MA's), (29, 7849), (35, 7915), (46, 7987), (47, 7996),

Gene: Archie_10 Start: 7665, Stop: 8003, Start Num: 16

Candidate Starts for Archie_10:

(Start: 16 @7665 has 72 MA's), (29, 7845), (38, 7926), (43, 7971), (44, 7974), (46, 7983), (47, 7992),

Gene: Auspice_20 Start: 11510, Stop: 11878, Start Num: 12

Candidate Starts for Auspice_20:

(Start: 12 @11510 has 18 MA's), (23, 11648), (31, 11741), (36, 11789), (38, 11801),

Gene: AvadaKedavra_10 Start: 7710, Stop: 8033, Start Num: 16

Candidate Starts for AvadaKedavra_10:

(Start: 16 @7710 has 72 MA's), (29, 7875), (35, 7941), (46, 8013), (47, 8022),

Gene: Aziz_24 Start: 12073, Stop: 12441, Start Num: 12

Candidate Starts for Aziz_24:

(6, 12013), (Start: 12 @12073 has 18 MA's), (Start: 13 @12076 has 3 MA's), (Start: 14 @12100 has 2 MA's), (15, 12109), (23, 12211), (31, 12304), (33, 12337), (34, 12340), (39, 12385), (46, 12421),

Gene: Azrael100_31 Start: 14635, Stop: 14976, Start Num: 16

Candidate Starts for Azrael100_31:

(Start: 16 @14635 has 72 MA's), (19, 14665), (21, 14719), (25, 14737), (27, 14770), (31, 14824), (35, 14869), (40, 14920), (41, 14923), (46, 14947),

Gene: Baoshan_9 Start: 7520, Stop: 7858, Start Num: 16

Candidate Starts for Baoshan_9:

(Start: 16 @7520 has 72 MA's), (20, 7598), (29, 7700), (38, 7781), (43, 7826), (44, 7829), (46, 7838), (47, 7847),

Gene: Baudelaire_10 Start: 7298, Stop: 7678, Start Num: 14

Candidate Starts for Baudelaire_10:

(1, 7016), (2, 7109), (3, 7127), (4, 7169), (5, 7178), (7, 7220), (8, 7229), (10, 7259), (11, 7268), (Start: 12 @7271 has 18 MA's), (Start: 14 @7298 has 2 MA's), (21, 7415), (28, 7511), (29, 7517), (32, 7556), (37, 7592), (38, 7595),

Gene: Bazzle_10 Start: 7641, Stop: 7979, Start Num: 16

Candidate Starts for Bazzle_10:

(Start: 16 @7641 has 72 MA's), (29, 7821), (38, 7902), (43, 7947), (44, 7950), (46, 7959), (47, 7968),

Gene: Bellis_11 Start: 7840, Stop: 8178, Start Num: 16

Candidate Starts for Bellis_11:

(Start: 16 @7840 has 72 MA's), (29, 8020), (36, 8089), (43, 8146), (44, 8149), (46, 8158), (47, 8167), (48, 8173),

Gene: BigCheese_10 Start: 7692, Stop: 8030, Start Num: 16

Candidate Starts for BigCheese_10:

(Start: 16 @7692 has 72 MA's), (29, 7872), (38, 7953), (43, 7998), (46, 8010), (47, 8019),

Gene: BobsGarage_10 Start: 7692, Stop: 8030, Start Num: 16

Candidate Starts for BobsGarage_10:

(Start: 16 @7692 has 72 MA's), (29, 7872), (38, 7953), (43, 7998), (46, 8010), (47, 8019),

Gene: Bongo_20 Start: 11510, Stop: 11878, Start Num: 12

Candidate Starts for Bongo_20:

(Start: 12 @11510 has 18 MA's), (23, 11648), (31, 11741), (36, 11789), (38, 11801),

Gene: BourbonZero_10 Start: 7846, Stop: 8184, Start Num: 16

Candidate Starts for BourbonZero_10:

(Start: 16 @7846 has 72 MA's), (29, 8026), (36, 8095), (43, 8152), (44, 8155), (47, 8173),

Gene: BrainDrainer_11 Start: 7511, Stop: 7849, Start Num: 16

Candidate Starts for BrainDrainer_11:

(Start: 16 @7511 has 72 MA's), (29, 7691), (43, 7817), (44, 7820), (46, 7829), (47, 7838),

Gene: Breezona_10 Start: 7692, Stop: 8030, Start Num: 16

Candidate Starts for Breezona_10:

(Start: 16 @7692 has 72 MA's), (29, 7872), (38, 7953), (43, 7998), (46, 8010), (47, 8019),

Gene: Bricole_20 Start: 11509, Stop: 11877, Start Num: 12

Candidate Starts for Bricole_20:

(Start: 12 @11509 has 18 MA's), (23, 11647), (31, 11740), (36, 11788), (38, 11800),

Gene: Bromden_10 Start: 7421, Stop: 7759, Start Num: 16

Candidate Starts for Bromden_10:

(Start: 16 @7421 has 72 MA's), (17, 7436), (29, 7601), (43, 7727), (44, 7730), (47, 7748),

Gene: Calm_10 Start: 7711, Stop: 8034, Start Num: 16

Candidate Starts for Calm_10:

(Start: 16 @7711 has 72 MA's), (29, 7876), (35, 7942), (46, 8014), (47, 8023),

Gene: Chaser_10 Start: 7426, Stop: 7764, Start Num: 16

Candidate Starts for Chaser_10:

(Start: 16 @7426 has 72 MA's), (20, 7504), (29, 7606), (43, 7732), (44, 7735), (46, 7744), (47, 7753),

Gene: CicholasNage_10 Start: 7711, Stop: 8034, Start Num: 16

Candidate Starts for CicholasNage_10:

(Start: 16 @7711 has 72 MA's), (29, 7876), (35, 7942), (46, 8014), (47, 8023),

Gene: Claus_10 Start: 7700, Stop: 8038, Start Num: 16

Candidate Starts for Claus_10:

(Start: 16 @7700 has 72 MA's), (20, 7778), (29, 7880), (38, 7961), (43, 8006), (44, 8009), (46, 8018), (47, 8027),

Gene: Clautastrophe_11 Start: 7844, Stop: 8182, Start Num: 16

Candidate Starts for Clautastrophe_11:

(Start: 16 @7844 has 72 MA's), (29, 8024), (36, 8093), (43, 8150), (44, 8153), (46, 8162), (47, 8171), (48, 8177),

Gene: Cosmo_32 Start: 14642, Stop: 14983, Start Num: 16

Candidate Starts for Cosmo_32:

(Start: 16 @14642 has 72 MA's), (19, 14672), (21, 14726), (25, 14744), (27, 14777), (31, 14831), (35, 14876), (40, 14927), (41, 14930), (46, 14954),

Gene: Crossroads_10 Start: 7692, Stop: 8030, Start Num: 16

Candidate Starts for Crossroads_10:

(Start: 16 @7692 has 72 MA's), (29, 7872), (38, 7953), (43, 7998), (46, 8010), (47, 8019),

Gene: DHan_10 Start: 7636, Stop: 7974, Start Num: 16

Candidate Starts for DHan_10:

(Start: 16 @7636 has 72 MA's), (20, 7714), (29, 7816), (38, 7897), (43, 7942), (44, 7945), (46, 7954), (47, 7963),

Gene: DanBing_9 Start: 7519, Stop: 7857, Start Num: 16

Candidate Starts for DanBing_9:

(Start: 16 @7519 has 72 MA's), (20, 7597), (29, 7699), (38, 7780), (43, 7825), (44, 7828), (46, 7837), (47, 7846),

Gene: Diminimus_21 Start: 11509, Stop: 11877, Start Num: 12

Candidate Starts for Diminimus_21:

(Start: 12 @11509 has 18 MA's), (23, 11647), (31, 11740), (36, 11788), (38, 11800),

Gene: DirkDirk_10 Start: 7712, Stop: 8035, Start Num: 16

Candidate Starts for DirkDirk_10:

(Start: 16 @7712 has 72 MA's), (29, 7877), (35, 7943), (46, 8015), (47, 8024),

Gene: Douge_10 Start: 7372, Stop: 7710, Start Num: 16
Candidate Starts for Douge_10:
(Start: 16 @7372 has 72 MA's), (20, 7450), (29, 7552), (43, 7678), (44, 7681), (46, 7690), (47, 7699),

Gene: Douzhi_10 Start: 7372, Stop: 7710, Start Num: 16
Candidate Starts for Douzhi_10:
(Start: 16 @7372 has 72 MA's), (29, 7552), (43, 7678), (44, 7681), (46, 7690), (47, 7699),

Gene: DrSeegs_10 Start: 7692, Stop: 8030, Start Num: 16
Candidate Starts for DrSeegs_10:
(Start: 16 @7692 has 72 MA's), (29, 7872), (38, 7953), (43, 7998), (46, 8010), (47, 8019),

Gene: Dulcita_21 Start: 11509, Stop: 11877, Start Num: 12
Candidate Starts for Dulcita_21:
(Start: 12 @11509 has 18 MA's), (23, 11647), (31, 11740), (36, 11788), (38, 11800),

Gene: DuncansLeg_11 Start: 7848, Stop: 8186, Start Num: 16
Candidate Starts for DuncansLeg_11:
(Start: 16 @7848 has 72 MA's), (29, 8028), (36, 8097), (43, 8154), (44, 8157), (47, 8175),

Gene: DyoEdafos_11 Start: 7582, Stop: 7920, Start Num: 16
Candidate Starts for DyoEdafos_11:
(Start: 16 @7582 has 72 MA's), (29, 7762), (43, 7888), (44, 7891), (46, 7900), (47, 7909),

Gene: Ellson_11 Start: 7856, Stop: 8194, Start Num: 16
Candidate Starts for Ellson_11:
(Start: 16 @7856 has 72 MA's), (29, 8036), (36, 8105), (43, 8162), (44, 8165), (47, 8183),

Gene: Enceladus_10 Start: 7712, Stop: 8035, Start Num: 16
Candidate Starts for Enceladus_10:
(Start: 16 @7712 has 72 MA's), (29, 7877), (35, 7943), (46, 8015), (47, 8024),

Gene: EniyanLRS_29 Start: 14336, Stop: 14677, Start Num: 16
Candidate Starts for EniyanLRS_29:
(Start: 16 @14336 has 72 MA's), (19, 14366), (21, 14420), (25, 14438), (27, 14471), (31, 14525), (35, 14570), (40, 14621), (41, 14624), (46, 14648),

Gene: Estes_25 Start: 12213, Stop: 12578, Start Num: 13
Candidate Starts for Estes_25:
(6, 12150), (Start: 12 @12210 has 18 MA's), (Start: 13 @12213 has 3 MA's), (Start: 14 @12237 has 2 MA's), (15, 12246), (23, 12348), (31, 12441), (33, 12474), (34, 12477), (35, 12486), (39, 12522), (46, 12558),

Gene: Faith1_10 Start: 7692, Stop: 8030, Start Num: 16
Candidate Starts for Faith1_10:
(Start: 16 @7692 has 72 MA's), (29, 7872), (38, 7953), (43, 7998), (46, 8010), (47, 8019),

Gene: FarmResident_10 Start: 7417, Stop: 7755, Start Num: 16
Candidate Starts for FarmResident_10:
(Start: 16 @7417 has 72 MA's), (29, 7597), (43, 7723), (44, 7726), (46, 7735), (47, 7744),

Gene: Finemlucis_10 Start: 7692, Stop: 8030, Start Num: 16

Candidate Starts for Finemlucis_10:

(Start: 16 @7692 has 72 MA's), (29, 7872), (38, 7953), (43, 7998), (46, 8010), (47, 8019),

Gene: Finnry_11 Start: 7841, Stop: 8179, Start Num: 16

Candidate Starts for Finnry_11:

(Start: 16 @7841 has 72 MA's), (29, 8021), (36, 8090), (43, 8147), (44, 8150), (46, 8159), (47, 8168), (48, 8174),

Gene: FreakyGoo_20 Start: 11510, Stop: 11878, Start Num: 12

Candidate Starts for FreakyGoo_20:

(Start: 12 @11510 has 18 MA's), (23, 11648), (31, 11741), (36, 11789), (38, 11801),

Gene: Gabriela_10 Start: 7692, Stop: 8030, Start Num: 16

Candidate Starts for Gabriela_10:

(Start: 16 @7692 has 72 MA's), (29, 7872), (38, 7953), (43, 7998), (46, 8010), (47, 8019),

Gene: Gardann_10 Start: 7692, Stop: 8030, Start Num: 16

Candidate Starts for Gardann_10:

(Start: 16 @7692 has 72 MA's), (29, 7872), (38, 7953), (43, 7998), (46, 8010), (47, 8019),

Gene: GardenSalsa_24 Start: 12046, Stop: 12414, Start Num: 12

Candidate Starts for GardenSalsa_24:

(6, 11986), (Start: 12 @12046 has 18 MA's), (Start: 13 @12049 has 3 MA's), (15, 12082), (23, 12184), (31, 12277), (33, 12310), (34, 12313), (35, 12322), (46, 12394),

Gene: GenevaB15_24 Start: 12073, Stop: 12441, Start Num: 12

Candidate Starts for GenevaB15_24:

(6, 12013), (Start: 12 @12073 has 18 MA's), (Start: 13 @12076 has 3 MA's), (Start: 14 @12100 has 2 MA's), (15, 12109), (23, 12211), (31, 12304), (33, 12337), (34, 12340), (39, 12385), (46, 12421),

Gene: Glaske16_21 Start: 11509, Stop: 11877, Start Num: 12

Candidate Starts for Glaske16_21:

(Start: 12 @11509 has 18 MA's), (23, 11647), (31, 11740), (36, 11788), (38, 11800),

Gene: GuuelaD_10 Start: 7725, Stop: 8063, Start Num: 16

Candidate Starts for GuuelaD_10:

(Start: 16 @7725 has 72 MA's), (29, 7905), (36, 7974), (38, 7986), (43, 8031), (44, 8034), (46, 8043), (47, 8052),

Gene: Hafay_10 Start: 7725, Stop: 8063, Start Num: 16

Candidate Starts for Hafay_10:

(Start: 16 @7725 has 72 MA's), (29, 7905), (38, 7986), (43, 8031), (46, 8043), (47, 8052),

Gene: Halena_10 Start: 7711, Stop: 8034, Start Num: 16

Candidate Starts for Halena_10:

(Start: 16 @7711 has 72 MA's), (29, 7876), (35, 7942), (46, 8014), (47, 8023),

Gene: IPHane7_20 Start: 11510, Stop: 11878, Start Num: 12

Candidate Starts for IPHane7_20:

(Start: 12 @11510 has 18 MA's), (23, 11648), (31, 11741), (36, 11789), (38, 11801),

Gene: Itos_10 Start: 7692, Stop: 8030, Start Num: 16

Candidate Starts for Itos_10:

(Start: 16 @7692 has 72 MA's), (29, 7872), (38, 7953), (43, 7998), (46, 8010), (47, 8019),

Gene: Izel_19 Start: 11509, Stop: 11877, Start Num: 12

Candidate Starts for Izel_19:

(Start: 12 @11509 has 18 MA's), (23, 11647), (31, 11740), (36, 11788), (38, 11800),

Gene: Jobypre_11 Start: 7844, Stop: 8182, Start Num: 16

Candidate Starts for Jobypre_11:

(Start: 16 @7844 has 72 MA's), (29, 8024), (36, 8093), (43, 8150), (44, 8153), (46, 8162), (47, 8171), (48, 8177),

Gene: JoeDirt_10 Start: 7711, Stop: 8034, Start Num: 16

Candidate Starts for JoeDirt_10:

(Start: 16 @7711 has 72 MA's), (29, 7876), (35, 7942), (46, 8014), (47, 8023),

Gene: Jubie_11 Start: 7844, Stop: 8182, Start Num: 16

Candidate Starts for Jubie_11:

(Start: 16 @7844 has 72 MA's), (29, 8024), (36, 8093), (43, 8150), (44, 8153), (46, 8162), (47, 8171), (48, 8177),

Gene: Kahlid_10 Start: 7692, Stop: 8030, Start Num: 16

Candidate Starts for Kahlid_10:

(Start: 16 @7692 has 72 MA's), (29, 7872), (38, 7953), (43, 7998), (46, 8010), (47, 8019),

Gene: Kingsolomon_11 Start: 7844, Stop: 8182, Start Num: 16

Candidate Starts for Kingsolomon_11:

(Start: 16 @7844 has 72 MA's), (29, 8024), (36, 8093), (43, 8150), (44, 8153), (46, 8162), (47, 8171), (48, 8177),

Gene: KirDoubleO7_9 Start: 7857, Stop: 8195, Start Num: 16

Candidate Starts for KirDoubleO7_9:

(Start: 16 @7857 has 72 MA's), (29, 8037), (36, 8106), (43, 8163), (44, 8166), (47, 8184),

Gene: Kropertea_10 Start: 7388, Stop: 7726, Start Num: 16

Candidate Starts for Kropertea_10:

(Start: 16 @7388 has 72 MA's), (29, 7568), (43, 7694), (44, 7697), (46, 7706), (47, 7715),

Gene: Krypton555_11 Start: 7833, Stop: 8171, Start Num: 16

Candidate Starts for Krypton555_11:

(Start: 16 @7833 has 72 MA's), (29, 8013), (36, 8082), (43, 8139), (44, 8142), (47, 8160),

Gene: Kumao_19 Start: 10846, Stop: 11211, Start Num: 12

Candidate Starts for Kumao_19:

(9, 10825), (Start: 12 @10846 has 18 MA's), (18, 10906), (23, 10981), (26, 11008), (31, 11074), (35, 11119), (36, 11122), (39, 11155), (42, 11176),

Gene: LeBron_10 Start: 7711, Stop: 8034, Start Num: 16

Candidate Starts for LeBron_10:

(Start: 16 @7711 has 72 MA's), (29, 7876), (35, 7942), (46, 8014), (47, 8023),

Gene: Lewan_10 Start: 7692, Stop: 8030, Start Num: 16

Candidate Starts for Lewan_10:

(Start: 16 @7692 has 72 MA's), (29, 7872), (38, 7953), (43, 7998), (46, 8010), (47, 8019),

Gene: LilDestine_10 Start: 7692, Stop: 8030, Start Num: 16

Candidate Starts for LilDestine_10:

(Start: 16 @7692 has 72 MA's), (29, 7872), (38, 7953), (43, 7998), (46, 8010), (47, 8019),

Gene: LilhomieP_19 Start: 11510, Stop: 11878, Start Num: 12

Candidate Starts for LilhomieP_19:

(Start: 12 @11510 has 18 MA's), (23, 11648), (31, 11741), (36, 11789), (38, 11801),

Gene: LiyuLake_11 Start: 7848, Stop: 8186, Start Num: 16

Candidate Starts for LiyuLake_11:

(Start: 16 @7848 has 72 MA's), (29, 8028), (36, 8097), (43, 8154), (44, 8157), (47, 8175),

Gene: Loadrie_10 Start: 7725, Stop: 8063, Start Num: 16

Candidate Starts for Loadrie_10:

(Start: 16 @7725 has 72 MA's), (29, 7905), (38, 7986), (43, 8031), (46, 8043), (47, 8052),

Gene: Lolly9_11 Start: 7851, Stop: 8189, Start Num: 16

Candidate Starts for Lolly9_11:

(Start: 16 @7851 has 72 MA's), (29, 8031), (36, 8100), (43, 8157), (44, 8160), (47, 8178),

Gene: Lumos_11 Start: 7844, Stop: 8182, Start Num: 16

Candidate Starts for Lumos_11:

(Start: 16 @7844 has 72 MA's), (29, 8024), (36, 8093), (43, 8150), (44, 8153), (46, 8162), (47, 8171), (48, 8177),

Gene: MAckerman_10 Start: 7710, Stop: 8033, Start Num: 16

Candidate Starts for MAckerman_10:

(Start: 16 @7710 has 72 MA's), (29, 7875), (35, 7941), (46, 8013), (47, 8022),

Gene: MaryV_32 Start: 14608, Stop: 14949, Start Num: 16

Candidate Starts for MaryV_32:

(Start: 16 @14608 has 72 MA's), (19, 14638), (21, 14692), (25, 14710), (27, 14743), (31, 14797), (35, 14842), (40, 14893), (41, 14896), (46, 14920),

Gene: Miley16_10 Start: 7692, Stop: 8030, Start Num: 16

Candidate Starts for Miley16_10:

(Start: 16 @7692 has 72 MA's), (29, 7872), (38, 7953), (43, 7998), (46, 8010), (47, 8019),

Gene: MiniLon_11 Start: 7851, Stop: 8189, Start Num: 16

Candidate Starts for MiniLon_11:

(Start: 16 @7851 has 72 MA's), (29, 8031), (36, 8100), (43, 8157), (44, 8160), (47, 8178),

Gene: MiniMac_11 Start: 7852, Stop: 8190, Start Num: 16

Candidate Starts for MiniMac_11:

(Start: 16 @7852 has 72 MA's), (29, 8032), (36, 8101), (43, 8158), (44, 8161), (47, 8179),

Gene: MkaliMitinis3_10 Start: 7692, Stop: 8030, Start Num: 16

Candidate Starts for MkaliMitinis3_10:

(Start: 16 @7692 has 72 MA's), (29, 7872), (38, 7953), (43, 7998), (46, 8010), (47, 8019),

Gene: Moostard_11 Start: 7840, Stop: 8178, Start Num: 16

Candidate Starts for Moostard_11:

(Start: 16 @7840 has 72 MA's), (29, 8020), (36, 8089), (43, 8146), (44, 8149), (46, 8158), (47, 8167), (48, 8173),

Gene: MrMagoo_24 Start: 12049, Stop: 12414, Start Num: 13

Candidate Starts for MrMagoo_24:

(6, 11986), (Start: 12 @12046 has 18 MA's), (Start: 13 @12049 has 3 MA's), (15, 12082), (23, 12184), (31, 12277), (33, 12310), (34, 12313), (35, 12322), (46, 12394),

Gene: MsGreen_11 Start: 7844, Stop: 8182, Start Num: 16

Candidate Starts for MsGreen_11:

(Start: 16 @7844 has 72 MA's), (29, 8024), (36, 8093), (43, 8150), (44, 8153), (46, 8162), (47, 8171), (48, 8177),

Gene: Nanosmite_24 Start: 12264, Stop: 12632, Start Num: 12

Candidate Starts for Nanosmite_24:

(6, 12204), (Start: 12 @12264 has 18 MA's), (22, 12399), (23, 12402), (26, 12429), (30, 12486), (31, 12495), (33, 12528), (38, 12555), (39, 12576), (45, 12606), (46, 12612),

Gene: Netyap_10 Start: 7692, Stop: 8030, Start Num: 16

Candidate Starts for Netyap_10:

(Start: 16 @7692 has 72 MA's), (29, 7872), (38, 7953), (43, 7998), (46, 8010), (47, 8019),

Gene: Nicholas_11 Start: 7844, Stop: 8182, Start Num: 16

Candidate Starts for Nicholas_11:

(Start: 16 @7844 has 72 MA's), (29, 8024), (36, 8093), (43, 8150), (44, 8153), (46, 8162), (47, 8171), (48, 8177),

Gene: Nicholasp3_10 Start: 7692, Stop: 8030, Start Num: 16

Candidate Starts for Nicholasp3_10:

(Start: 16 @7692 has 72 MA's), (29, 7872), (38, 7953), (43, 7998), (46, 8010), (47, 8019),

Gene: OhShagHennessy_10 Start: 7684, Stop: 8007, Start Num: 16

Candidate Starts for OhShagHennessy_10:

(Start: 16 @7684 has 72 MA's), (29, 7849), (35, 7915), (46, 7987), (47, 7996),

Gene: PYPDinur_10 Start: 7372, Stop: 7710, Start Num: 16

Candidate Starts for PYPDinur_10:

(Start: 16 @7372 has 72 MA's), (29, 7552), (43, 7678), (44, 7681), (46, 7690), (47, 7699),

Gene: PegLeg_20 Start: 11509, Stop: 11877, Start Num: 12

Candidate Starts for PegLeg_20:

(Start: 12 @11509 has 18 MA's), (23, 11647), (31, 11740), (36, 11788), (38, 11800),

Gene: Pochiewood_10 Start: 7710, Stop: 8033, Start Num: 16

Candidate Starts for Pochiewood_10:

(Start: 16 @7710 has 72 MA's), (29, 7875), (35, 7941), (46, 8013), (47, 8022),

Gene: Quby_10 Start: 7371, Stop: 7709, Start Num: 16

Candidate Starts for Quby_10:

(Start: 16 @7371 has 72 MA's), (20, 7449), (29, 7551), (43, 7677), (44, 7680), (46, 7689), (47, 7698),

Gene: Reindeer_18 Start: 11362, Stop: 11730, Start Num: 12

Candidate Starts for Reindeer_18:

(Start: 12 @11362 has 18 MA's), (Start: 14 @11389 has 2 MA's), (22, 11497), (23, 11500), (24, 11509), (31, 11593), (34, 11629), (35, 11638), (36, 11641), (38, 11653), (39, 11674),

Gene: Rey_24 Start: 12284, Stop: 12652, Start Num: 13

Candidate Starts for Rey_24:

(6, 12221), (Start: 12 @12281 has 18 MA's), (Start: 13 @12284 has 3 MA's), (Start: 14 @12308 has 2 MA's), (15, 12317), (23, 12419), (31, 12512), (33, 12545), (34, 12548), (39, 12593), (46, 12629),

Gene: Rose5_10 Start: 7710, Stop: 8033, Start Num: 16

Candidate Starts for Rose5_10:

(Start: 16 @7710 has 72 MA's), (29, 7875), (35, 7941), (46, 8013), (47, 8022),

Gene: Rumpelstiltskin_10 Start: 7692, Stop: 8030, Start Num: 16

Candidate Starts for Rumpelstiltskin_10:

(Start: 16 @7692 has 72 MA's), (29, 7872), (38, 7953), (43, 7998), (46, 8010), (47, 8019),

Gene: Samty_11 Start: 7840, Stop: 8178, Start Num: 16

Candidate Starts for Samty_11:

(Start: 16 @7840 has 72 MA's), (29, 8020), (36, 8089), (43, 8146), (44, 8149), (46, 8158), (47, 8167), (48, 8173),

Gene: Sarshaun_10 Start: 7725, Stop: 8063, Start Num: 16

Candidate Starts for Sarshaun_10:

(Start: 16 @7725 has 72 MA's), (29, 7905), (38, 7986), (43, 8031), (46, 8043), (47, 8052),

Gene: Sheng711_10 Start: 7372, Stop: 7710, Start Num: 16

Candidate Starts for Sheng711_10:

(Start: 16 @7372 has 72 MA's), (29, 7552), (43, 7678), (44, 7681), (46, 7690), (47, 7699),

Gene: Silverleaf_10 Start: 7710, Stop: 8033, Start Num: 16

Candidate Starts for Silverleaf_10:

(Start: 16 @7710 has 72 MA's), (29, 7875), (35, 7941), (46, 8013), (47, 8022),

Gene: Skinny_21 Start: 11510, Stop: 11878, Start Num: 12

Candidate Starts for Skinny_21:

(Start: 12 @11510 has 18 MA's), (23, 11648), (31, 11741), (36, 11789), (38, 11801),

Gene: SlimJimmy_19 Start: 11509, Stop: 11877, Start Num: 12

Candidate Starts for SlimJimmy_19:

(Start: 12 @11509 has 18 MA's), (23, 11647), (31, 11740), (36, 11788), (38, 11800),

Gene: Snenia_11 Start: 7845, Stop: 8183, Start Num: 16

Candidate Starts for Snenia_11:

(Start: 16 @7845 has 72 MA's), (29, 8025), (36, 8094), (43, 8151), (44, 8154), (46, 8163), (47, 8172), (48, 8178),

Gene: Soap141_10 Start: 7725, Stop: 8063, Start Num: 16

Candidate Starts for Soap141_10:

(Start: 16 @7725 has 72 MA's), (29, 7905), (38, 7986), (43, 8031), (46, 8043), (47, 8052),

Gene: Tourach_10 Start: 7705, Stop: 8043, Start Num: 16

Candidate Starts for Tourach_10:

(Start: 16 @7705 has 72 MA's), (20, 7783), (29, 7885), (38, 7966), (43, 8011), (44, 8014), (46, 8023), (47, 8032),

Gene: TriFive_11 Start: 7844, Stop: 8182, Start Num: 16

Candidate Starts for TriFive_11:

(Start: 16 @7844 has 72 MA's), (29, 8024), (36, 8093), (43, 8150), (44, 8153), (46, 8162), (47, 8171), (48, 8177),

Gene: TyDawg_20 Start: 11510, Stop: 11878, Start Num: 12

Candidate Starts for TyDawg_20:

(Start: 12 @11510 has 18 MA's), (23, 11648), (31, 11741), (36, 11789), (38, 11801),

Gene: Tyson_10 Start: 7710, Stop: 8033, Start Num: 16

Candidate Starts for Tyson_10:

(Start: 16 @7710 has 72 MA's), (29, 7875), (35, 7941), (46, 8013), (47, 8022),

Gene: UPIE_10 Start: 7708, Stop: 8031, Start Num: 16

Candidate Starts for UPIE_10:

(Start: 16 @7708 has 72 MA's), (29, 7873), (35, 7939), (46, 8011), (47, 8020),

Gene: Underpass_10 Start: 7692, Stop: 8030, Start Num: 16

Candidate Starts for Underpass_10:

(Start: 16 @7692 has 72 MA's), (29, 7872), (38, 7953), (43, 7998), (46, 8010), (47, 8019),

Gene: Vetrix_10 Start: 7692, Stop: 8030, Start Num: 16

Candidate Starts for Vetrix_10:

(Start: 16 @7692 has 72 MA's), (29, 7872), (38, 7953), (43, 7998), (46, 8010), (47, 8019),

Gene: Wamburgexpress_10 Start: 7710, Stop: 8033, Start Num: 16

Candidate Starts for Wamburgexpress_10:

(Start: 16 @7710 has 72 MA's), (29, 7875), (35, 7941), (46, 8013), (47, 8022),

Gene: Whirlwind_12 Start: 7838, Stop: 8176, Start Num: 16

Candidate Starts for Whirlwind_12:

(Start: 16 @7838 has 72 MA's), (29, 8018), (36, 8087), (43, 8144), (44, 8147), (47, 8165),

Gene: Wigglewobble_10 Start: 7725, Stop: 8063, Start Num: 16

Candidate Starts for Wigglewobble_10:

(Start: 16 @7725 has 72 MA's), (29, 7905), (38, 7986), (43, 8031), (46, 8043), (47, 8052),

Gene: Wildcat_32 Start: 14618, Stop: 14959, Start Num: 16

Candidate Starts for Wildcat_32:

(Start: 16 @14618 has 72 MA's), (19, 14648), (21, 14702), (25, 14720), (27, 14753), (31, 14807), (35, 14852), (40, 14903), (41, 14906), (46, 14930),

Gene: Wilder_10 Start: 7692, Stop: 8030, Start Num: 16

Candidate Starts for Wilder_10:

(Start: 16 @7692 has 72 MA's), (29, 7872), (38, 7953), (43, 7998), (46, 8010), (47, 8019),

Gene: Winky_10 Start: 7692, Stop: 8030, Start Num: 16

Candidate Starts for Winky_10:

(Start: 16 @7692 has 72 MA's), (29, 7872), (38, 7953), (43, 7998), (46, 8010), (47, 8019),

Gene: Wyatt2_10 Start: 7710, Stop: 8033, Start Num: 16

Candidate Starts for Wyatt2_10:

(Start: 16 @7710 has 72 MA's), (29, 7875), (35, 7941), (46, 8013), (47, 8022),

Gene: Zakai_10 Start: 7680, Stop: 8018, Start Num: 16

Candidate Starts for Zakai_10:

(Start: 16 @7680 has 72 MA's), (29, 7860), (38, 7941), (43, 7986), (46, 7998), (47, 8007),

Gene: Zaria_10 Start: 7711, Stop: 8034, Start Num: 16

Candidate Starts for Zaria_10:

(Start: 16 @7711 has 72 MA's), (29, 7876), (35, 7942), (46, 8014), (47, 8023),

Gene: ZhongYanYuan_9 Start: 7520, Stop: 7858, Start Num: 16

Candidate Starts for ZhongYanYuan_9:

(Start: 16 @7520 has 72 MA's), (20, 7598), (29, 7700), (38, 7781), (43, 7826), (44, 7829), (46, 7838),
(47, 7847),