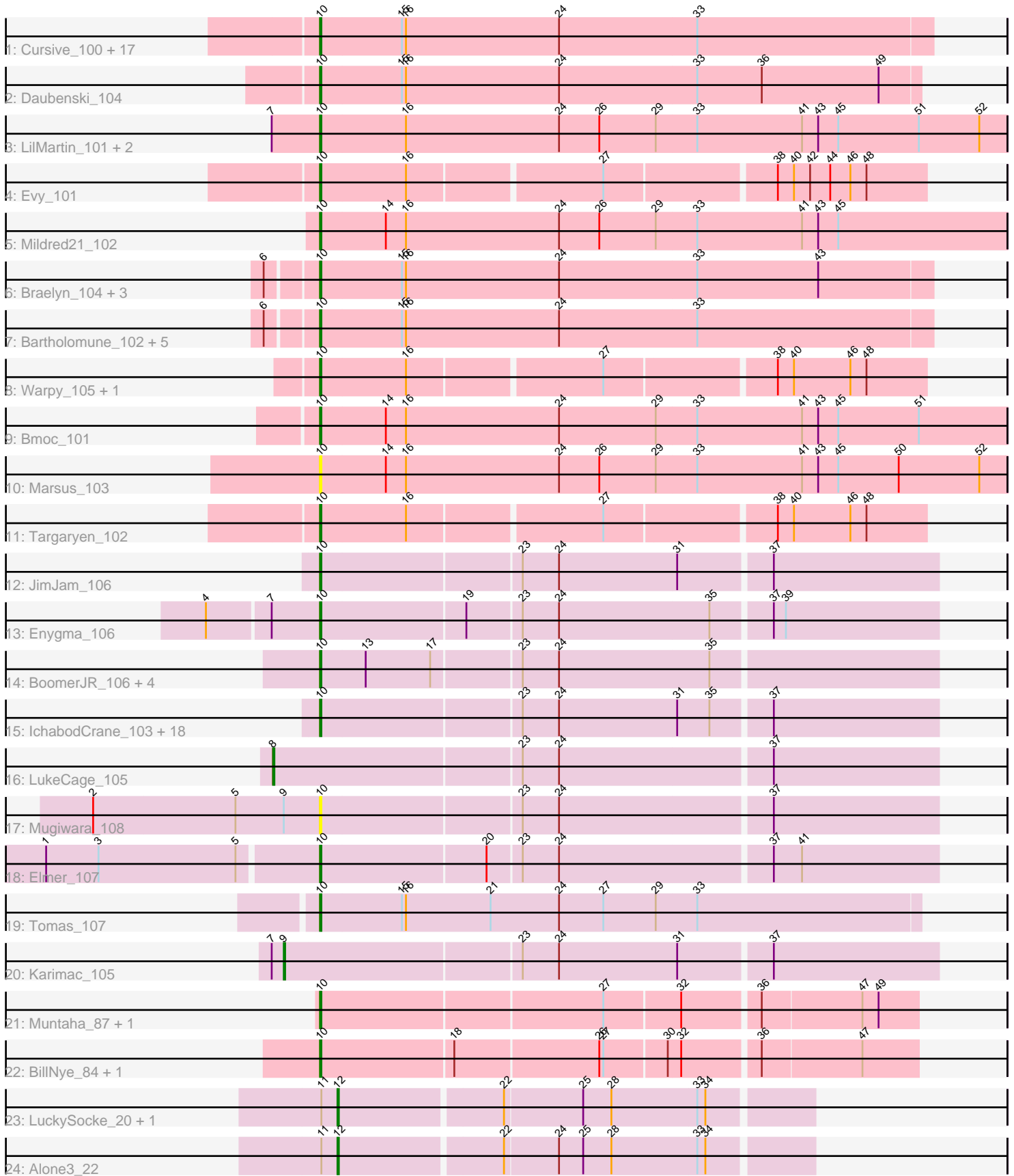


Pham 198037



Note: Tracks are now grouped by subcluster and scaled. Switching in subcluster is indicated by changes in track color. Track scale is now set by default to display the region 30 bp upstream of start 1 to 30 bp downstream of the last possible start. If this default region is judged to be packed too tightly with annotated starts, the track will be further scaled to only show that region of the ORF with annotated starts. This action will be indicated by adding "Zoomed" to the title. For starts, yellow indicates the location of called starts comprised solely of Glimmer/GeneMark auto-annotations, green indicates the location of called starts with at least 1 manual gene annotation.

Pham 198037 Report

This analysis was run 01/18/25 on database version 583.

Pham number 198037 has 77 members, 8 are drafts.

Phages represented in each track:

- Track 1 : Cursive_100, Sushi23_101, PacManQ_101, BlueOtter_102, EGole_103, Cross_102, Samisti12_102, Tribute_101, Scheme_103, Larnav_102, Watermoore_101, Leo04_103, Peebs_101, Shuckle_100, HangryHippo_102, Lululemon_101, Teutsch_102, Pepperwood_102
- Track 2 : Daubenski_104
- Track 3 : LilMartin_101, MulchMansion_101, Angela_101
- Track 4 : Evy_101
- Track 5 : Mildred21_102
- Track 6 : Braelyn_104, Navo_100, Persimmon_102, WhereRU_99
- Track 7 : Bartholomune_102, Paradiddles_99, Liandry_102, Squillum_103, NootNoot_99, PinkiePie_102
- Track 8 : Warpy_105, Jay2Jay_106
- Track 9 : Bmoc_101
- Track 10 : Marsus_103
- Track 11 : Targaryen_102
- Track 12 : JimJam_106
- Track 13 : Enygma_106
- Track 14 : BoomerJR_106, Genie2_106, Sollertia_106, Stanimal_106, Yaboi_106
- Track 15 : IchabodCrane_103, Jollison_105, CeilingFan_108, SaltySpittoon_105, TomSawyer_104, Birchlyn_103, PumpkinSpice_105, Starbow_104, Bordeaux_104, Amabiko_106, KentuckyRacer_106, Spelly_106, Quarant19_105, Rikishi_108, Battuta_104, MindFlayer_103, Wipeout_103, Gibbi_110, Spilled_107
- Track 16 : LukeCage_105
- Track 17 : Mugiwara_108
- Track 18 : Elmer_107
- Track 19 : Tomas_107
- Track 20 : Karimac_105
- Track 21 : Muntaha_87, Wakanda_85
- Track 22 : BillNye_84, Circinus_85
- Track 23 : LuckySocke_20, Beleetus_20
- Track 24 : Alone3_22

Summary of Final Annotations (See graph section above for start numbers):

The start number called the most often in the published annotations is 10, it was called in 65 of the 69 non-draft genes in the pham.

Genes that call this "Most Annotated" start:

- Amabiko_106, Angela_101, Bartholomune_102, Battuta_104, BillNye_84, Birchlyn_103, BlueOtter_102, Bmoc_101, BoomerJR_106, Bordeaux_104, Braelyn_104, CeilingFan_108, Circinus_85, Cross_102, Cursive_100, Daubenski_104, EGole_103, Elmer_107, Enygma_106, Evy_101, Genie2_106, Gibbi_110, HangryHippo_102, IchabodCrane_103, Jay2Jay_106, JimJam_106, Jollison_105, KentuckyRacer_106, Larnav_102, Leo04_103, Liandry_102, LilMartin_101, Lululemon_101, Marsus_103, Mildred21_102, MindFlayer_103, Mugiwara_108, MulchMansion_101, Muntaha_87, Navo_100, NootNoot_99, PacManQ_101, Paradiddles_99, Peebs_101, Pepperwood_102, Persimmon_102, PinkiePie_102, PumpkinSpice_105, Quarant19_105, Rikishi_108, SaltySpittoon_105, Samisti12_102, Scheme_103, Shuckle_100, Sollertia_106, Spelly_106, Spilled_107, Squillium_103, Stanimal_106, Starbow_104, Sushi23_101, Targaryen_102, Teutsch_102, TomSawyer_104, Tomas_107, Tribute_101, Wakanda_85, Warpy_105, Watermoore_101, WhereRU_99, Wipeout_103, Yaboi_106,

Genes that have the "Most Annotated" start but do not call it:

-

Genes that do not have the "Most Annotated" start:

- Alone3_22, Beleetus_20, Karimac_105, LuckySocke_20, LukeCage_105,

Summary by start number:

Start 8:

- Found in 1 of 77 (1.3%) of genes in pham
- Manual Annotations of this start: 1 of 69
- Called 100.0% of time when present
- Phage (with cluster) where this start called: LukeCage_105 (BE2),

Start 9:

- Found in 2 of 77 (2.6%) of genes in pham
- Manual Annotations of this start: 1 of 69
- Called 50.0% of time when present
- Phage (with cluster) where this start called: Karimac_105 (BE2),

Start 10:

- Found in 72 of 77 (93.5%) of genes in pham
- Manual Annotations of this start: 65 of 69
- Called 100.0% of time when present
- Phage (with cluster) where this start called: Amabiko_106 (BE2), Angela_101 (BE1), Bartholomune_102 (BE1), Battuta_104 (BE2), BillNye_84 (BK2), Birchlyn_103 (BE2), BlueOtter_102 (BE1), Bmoc_101 (BE1), BoomerJR_106 (BE2), Bordeaux_104 (BE2), Braelyn_104 (BE1), CeilingFan_108 (BE2), Circinus_85 (BK2), Cross_102 (BE1), Cursive_100 (BE1), Daubenski_104 (BE1), EGole_103 (BE1), Elmer_107 (BE2), Enygma_106 (BE2), Evy_101 (BE1), Genie2_106 (BE2), Gibbi_110 (BE2), HangryHippo_102 (BE1), IchabodCrane_103 (BE2), Jay2Jay_106 (BE1), JimJam_106 (BE2), Jollison_105 (BE2), KentuckyRacer_106 (BE2), Larnav_102 (BE1), Leo04_103 (BE1), Liandry_102 (BE1), LilMartin_101 (BE1), Lululemon_101 (BE1), Marsus_103 (BE1), Mildred21_102 (BE1), MindFlayer_103 (BE2),

Mugiwara_108 (BE2), MulchMansion_101 (BE1), Muntaha_87 (BK2), Navo_100 (BE1), NootNoot_99 (BE1), PacManQ_101 (BE1), Paradiddles_99 (BE1), Peebs_101 (BE1), Pepperwood_102 (BE1), Persimmon_102 (BE1), PinkiePie_102 (BE1), PumpkinSpice_105 (BE2), Quaran19_105 (BE2), Rikishi_108 (BE2), SaltySpittoon_105 (BE2), Samisti12_102 (BE1), Scheme_103 (BE1), Shuckle_100 (BE1), Sollertia_106 (BE2), Spelly_106 (BE2), Spilled_107 (BE2), Squillium_103 (BE1), Stanimal_106 (BE2), Starbow_104 (BE2), Sushi23_101 (BE1), Targaryen_102 (BE1), Teutsch_102 (BE1), TomSawyer_104 (BE2), Tomas_107 (BE2), Tribute_101 (BE1), Wakanda_85 (BK2), Warpy_105 (BE1), Watermoore_101 (BE1), WhereRU_99 (BE1), Wipeout_103 (BE2), Yaboi_106 (BE2),

Start 12:

- Found in 3 of 77 (3.9%) of genes in pham
- Manual Annotations of this start: 2 of 69
- Called 100.0% of time when present
- Phage (with cluster) where this start called: Alone3_22 (BS), Beleetus_20 (BS), LuckySocke_20 (BS),

Summary by clusters:

There are 4 clusters represented in this pham: BE2, BE1, BK2, BS,

Info for manual annotations of cluster BE1:

- Start number 10 was manually annotated 36 times for cluster BE1.

Info for manual annotations of cluster BE2:

- Start number 8 was manually annotated 1 time for cluster BE2.
- Start number 9 was manually annotated 1 time for cluster BE2.
- Start number 10 was manually annotated 25 times for cluster BE2.

Info for manual annotations of cluster BK2:

- Start number 10 was manually annotated 4 times for cluster BK2.

Info for manual annotations of cluster BS:

- Start number 12 was manually annotated 2 times for cluster BS.

Gene Information:

Gene: Alone3_22 Start: 7489, Stop: 7827, Start Num: 12

Candidate Starts for Alone3_22:

(11, 7477), (Start: 12 @7489 has 2 MA's), (22, 7606), (24, 7645), (25, 7663), (28, 7684), (33, 7747), (34, 7753),

Gene: Amabiko_106 Start: 72868, Stop: 73314, Start Num: 10

Candidate Starts for Amabiko_106:

(Start: 10 @72868 has 65 MA's), (23, 73012), (24, 73039), (31, 73126), (35, 73150), (37, 73192),

Gene: Angela_101 Start: 72019, Stop: 72528, Start Num: 10

Candidate Starts for Angela_101:

(7, 71983), (Start: 10 @72019 has 65 MA's), (16, 72082), (24, 72196), (26, 72226), (29, 72268), (33, 72298), (41, 72376), (43, 72388), (45, 72403), (51, 72463), (52, 72508),

Gene: Bartholomune_102 Start: 72412, Stop: 72864, Start Num: 10
Candidate Starts for Bartholomune_102:
(6, 72379), (Start: 10 @72412 has 65 MA's), (15, 72472), (16, 72475), (24, 72589), (33, 72691),

Gene: Battuta_104 Start: 72842, Stop: 73288, Start Num: 10
Candidate Starts for Battuta_104:
(Start: 10 @72842 has 65 MA's), (23, 72986), (24, 73013), (31, 73100), (35, 73124), (37, 73166),

Gene: Beleetus_20 Start: 6988, Stop: 7326, Start Num: 12
Candidate Starts for Beleetus_20:
(11, 6976), (Start: 12 @6988 has 2 MA's), (22, 7105), (25, 7162), (28, 7183), (33, 7246), (34, 7252),

Gene: BillNye_84 Start: 67275, Stop: 67700, Start Num: 10
Candidate Starts for BillNye_84:
(Start: 10 @67275 has 65 MA's), (18, 67371), (26, 67476), (27, 67479), (30, 67524), (32, 67533), (36, 67587), (47, 67659),

Gene: Birchlyn_103 Start: 70728, Stop: 71174, Start Num: 10
Candidate Starts for Birchlyn_103:
(Start: 10 @70728 has 65 MA's), (23, 70872), (24, 70899), (31, 70986), (35, 71010), (37, 71052),

Gene: BlueOtter_102 Start: 72816, Stop: 73268, Start Num: 10
Candidate Starts for BlueOtter_102:
(Start: 10 @72816 has 65 MA's), (15, 72876), (16, 72879), (24, 72993), (33, 73095),

Gene: Bmoc_101 Start: 72064, Stop: 72573, Start Num: 10
Candidate Starts for Bmoc_101:
(Start: 10 @72064 has 65 MA's), (14, 72112), (16, 72127), (24, 72241), (29, 72313), (33, 72343), (41, 72421), (43, 72433), (45, 72448), (51, 72508),

Gene: BoomerJR_106 Start: 72816, Stop: 73262, Start Num: 10
Candidate Starts for BoomerJR_106:
(Start: 10 @72816 has 65 MA's), (13, 72849), (17, 72897), (23, 72960), (24, 72987), (35, 73098),

Gene: Bordeaux_104 Start: 72997, Stop: 73443, Start Num: 10
Candidate Starts for Bordeaux_104:
(Start: 10 @72997 has 65 MA's), (23, 73141), (24, 73168), (31, 73255), (35, 73279), (37, 73321),

Gene: Braelyn_104 Start: 73301, Stop: 73753, Start Num: 10
Candidate Starts for Braelyn_104:
(6, 73268), (Start: 10 @73301 has 65 MA's), (15, 73361), (16, 73364), (24, 73478), (33, 73580), (43, 73670),

Gene: CeilingFan_108 Start: 72760, Stop: 73206, Start Num: 10
Candidate Starts for CeilingFan_108:
(Start: 10 @72760 has 65 MA's), (23, 72904), (24, 72931), (31, 73018), (35, 73042), (37, 73084),

Gene: Circinus_85 Start: 67263, Stop: 67688, Start Num: 10
Candidate Starts for Circinus_85:
(Start: 10 @67263 has 65 MA's), (18, 67359), (26, 67464), (27, 67467), (30, 67512), (32, 67521), (36, 67575), (47, 67647),

Gene: Cross_102 Start: 72817, Stop: 73269, Start Num: 10
Candidate Starts for Cross_102:
(Start: 10 @72817 has 65 MA's), (15, 72877), (16, 72880), (24, 72994), (33, 73096),

Gene: Cursive_100 Start: 72342, Stop: 72794, Start Num: 10
Candidate Starts for Cursive_100:
(Start: 10 @72342 has 65 MA's), (15, 72402), (16, 72405), (24, 72519), (33, 72621),

Gene: Daubenski_104 Start: 72431, Stop: 72874, Start Num: 10
Candidate Starts for Daubenski_104:
(Start: 10 @72431 has 65 MA's), (15, 72491), (16, 72494), (24, 72608), (33, 72710), (36, 72758), (49, 72845),

Gene: EGole_103 Start: 73664, Stop: 74116, Start Num: 10
Candidate Starts for EGole_103:
(Start: 10 @73664 has 65 MA's), (15, 73724), (16, 73727), (24, 73841), (33, 73943),

Gene: Elmer_107 Start: 73295, Stop: 73741, Start Num: 10
Candidate Starts for Elmer_107:
(1, 73097), (3, 73136), (5, 73238), (Start: 10 @73295 has 65 MA's), (20, 73415), (23, 73439), (24, 73466), (37, 73619), (41, 73640),

Gene: Enygma_106 Start: 74654, Stop: 75100, Start Num: 10
Candidate Starts for Enygma_106:
(4, 74573), (7, 74618), (Start: 10 @74654 has 65 MA's), (19, 74759), (23, 74798), (24, 74825), (35, 74936), (37, 74978), (39, 74987),

Gene: Evy_101 Start: 72801, Stop: 73232, Start Num: 10
Candidate Starts for Evy_101:
(Start: 10 @72801 has 65 MA's), (16, 72864), (27, 73002), (38, 73122), (40, 73134), (42, 73146), (44, 73161), (46, 73176), (48, 73188),

Gene: Genie2_106 Start: 72930, Stop: 73376, Start Num: 10
Candidate Starts for Genie2_106:
(Start: 10 @72930 has 65 MA's), (13, 72963), (17, 73011), (23, 73074), (24, 73101), (35, 73212),

Gene: Gibbi_110 Start: 72980, Stop: 73426, Start Num: 10
Candidate Starts for Gibbi_110:
(Start: 10 @72980 has 65 MA's), (23, 73124), (24, 73151), (31, 73238), (35, 73262), (37, 73304),

Gene: HangryHippo_102 Start: 72816, Stop: 73268, Start Num: 10
Candidate Starts for HangryHippo_102:
(Start: 10 @72816 has 65 MA's), (15, 72876), (16, 72879), (24, 72993), (33, 73095),

Gene: IchabodCrane_103 Start: 72569, Stop: 73015, Start Num: 10
Candidate Starts for IchabodCrane_103:
(Start: 10 @72569 has 65 MA's), (23, 72713), (24, 72740), (31, 72827), (35, 72851), (37, 72893),

Gene: Jay2Jay_106 Start: 73654, Stop: 74085, Start Num: 10
Candidate Starts for Jay2Jay_106:
(Start: 10 @73654 has 65 MA's), (16, 73717), (27, 73855), (38, 73975), (40, 73987), (46, 74029), (48, 74041),

Gene: JimJam_106 Start: 72946, Stop: 73392, Start Num: 10

Candidate Starts for JimJam_106:

(Start: 10 @72946 has 65 MA's), (23, 73090), (24, 73117), (31, 73204), (37, 73270),

Gene: Jollison_105 Start: 72825, Stop: 73271, Start Num: 10

Candidate Starts for Jollison_105:

(Start: 10 @72825 has 65 MA's), (23, 72969), (24, 72996), (31, 73083), (35, 73107), (37, 73149),

Gene: Karimac_105 Start: 73077, Stop: 73550, Start Num: 9

Candidate Starts for Karimac_105:

(7, 73068), (Start: 9 @73077 has 1 MA's), (23, 73248), (24, 73275), (31, 73362), (37, 73428),

Gene: KentuckyRacer_106 Start: 72761, Stop: 73207, Start Num: 10

Candidate Starts for KentuckyRacer_106:

(Start: 10 @72761 has 65 MA's), (23, 72905), (24, 72932), (31, 73019), (35, 73043), (37, 73085),

Gene: Larnav_102 Start: 72801, Stop: 73253, Start Num: 10

Candidate Starts for Larnav_102:

(Start: 10 @72801 has 65 MA's), (15, 72861), (16, 72864), (24, 72978), (33, 73080),

Gene: Leo04_103 Start: 73316, Stop: 73768, Start Num: 10

Candidate Starts for Leo04_103:

(Start: 10 @73316 has 65 MA's), (15, 73376), (16, 73379), (24, 73493), (33, 73595),

Gene: Liandry_102 Start: 73161, Stop: 73613, Start Num: 10

Candidate Starts for Liandry_102:

(6, 73128), (Start: 10 @73161 has 65 MA's), (15, 73221), (16, 73224), (24, 73338), (33, 73440),

Gene: LilMartin_101 Start: 71967, Stop: 72476, Start Num: 10

Candidate Starts for LilMartin_101:

(7, 71931), (Start: 10 @71967 has 65 MA's), (16, 72030), (24, 72144), (26, 72174), (29, 72216), (33, 72246), (41, 72324), (43, 72336), (45, 72351), (51, 72411), (52, 72456),

Gene: LuckySocke_20 Start: 7145, Stop: 7483, Start Num: 12

Candidate Starts for LuckySocke_20:

(11, 7133), (Start: 12 @7145 has 2 MA's), (22, 7262), (25, 7319), (28, 7340), (33, 7403), (34, 7409),

Gene: LukeCage_105 Start: 72820, Stop: 73302, Start Num: 8

Candidate Starts for LukeCage_105:

(Start: 8 @72820 has 1 MA's), (23, 73000), (24, 73027), (37, 73180),

Gene: Lululemon_101 Start: 72197, Stop: 72649, Start Num: 10

Candidate Starts for Lululemon_101:

(Start: 10 @72197 has 65 MA's), (15, 72257), (16, 72260), (24, 72374), (33, 72476),

Gene: Marsus_103 Start: 72308, Stop: 72817, Start Num: 10

Candidate Starts for Marsus_103:

(Start: 10 @72308 has 65 MA's), (14, 72356), (16, 72371), (24, 72485), (26, 72515), (29, 72557), (33, 72587), (41, 72665), (43, 72677), (45, 72692), (50, 72737), (52, 72797),

Gene: Mildred21_102 Start: 72145, Stop: 72654, Start Num: 10

Candidate Starts for Mildred21_102:

(Start: 10 @72145 has 65 MA's), (14, 72193), (16, 72208), (24, 72322), (26, 72352), (29, 72394), (33, 72424), (41, 72502), (43, 72514), (45, 72529),

Gene: MindFlayer_103 Start: 72476, Stop: 72922, Start Num: 10

Candidate Starts for MindFlayer_103:

(Start: 10 @72476 has 65 MA's), (23, 72620), (24, 72647), (31, 72734), (35, 72758), (37, 72800),

Gene: Mugiwara_108 Start: 73360, Stop: 73806, Start Num: 10

Candidate Starts for Mugiwara_108:

(2, 73192), (5, 73297), (Start: 9 @73333 has 1 MA's), (Start: 10 @73360 has 65 MA's), (23, 73504), (24, 73531), (37, 73684),

Gene: MulchMansion_101 Start: 71967, Stop: 72476, Start Num: 10

Candidate Starts for MulchMansion_101:

(7, 71931), (Start: 10 @71967 has 65 MA's), (16, 72030), (24, 72144), (26, 72174), (29, 72216), (33, 72246), (41, 72324), (43, 72336), (45, 72351), (51, 72411), (52, 72456),

Gene: Muntaha_87 Start: 66081, Stop: 66506, Start Num: 10

Candidate Starts for Muntaha_87:

(Start: 10 @66081 has 65 MA's), (27, 66285), (32, 66339), (36, 66393), (47, 66465), (49, 66477),

Gene: Navo_100 Start: 72963, Stop: 73415, Start Num: 10

Candidate Starts for Navo_100:

(6, 72930), (Start: 10 @72963 has 65 MA's), (15, 73023), (16, 73026), (24, 73140), (33, 73242), (43, 73332),

Gene: NootNoot_99 Start: 72075, Stop: 72527, Start Num: 10

Candidate Starts for NootNoot_99:

(6, 72042), (Start: 10 @72075 has 65 MA's), (15, 72135), (16, 72138), (24, 72252), (33, 72354),

Gene: PacManQ_101 Start: 72197, Stop: 72649, Start Num: 10

Candidate Starts for PacManQ_101:

(Start: 10 @72197 has 65 MA's), (15, 72257), (16, 72260), (24, 72374), (33, 72476),

Gene: Paradiddles_99 Start: 72224, Stop: 72676, Start Num: 10

Candidate Starts for Paradiddles_99:

(6, 72191), (Start: 10 @72224 has 65 MA's), (15, 72284), (16, 72287), (24, 72401), (33, 72503),

Gene: Peebs_101 Start: 72615, Stop: 73067, Start Num: 10

Candidate Starts for Peebs_101:

(Start: 10 @72615 has 65 MA's), (15, 72675), (16, 72678), (24, 72792), (33, 72894),

Gene: Pepperwood_102 Start: 72748, Stop: 73200, Start Num: 10

Candidate Starts for Pepperwood_102:

(Start: 10 @72748 has 65 MA's), (15, 72808), (16, 72811), (24, 72925), (33, 73027),

Gene: Persimmon_102 Start: 72009, Stop: 72461, Start Num: 10

Candidate Starts for Persimmon_102:

(6, 71976), (Start: 10 @72009 has 65 MA's), (15, 72069), (16, 72072), (24, 72186), (33, 72288), (43, 72378),

Gene: PinkiePie_102 Start: 73161, Stop: 73613, Start Num: 10

Candidate Starts for PinkiePie_102:

(6, 73128), (Start: 10 @73161 has 65 MA's), (15, 73221), (16, 73224), (24, 73338), (33, 73440),

Gene: PumpkinSpice_105 Start: 72868, Stop: 73314, Start Num: 10

Candidate Starts for PumpkinSpice_105:

(Start: 10 @72868 has 65 MA's), (23, 73012), (24, 73039), (31, 73126), (35, 73150), (37, 73192),

Gene: Quaran19_105 Start: 72859, Stop: 73305, Start Num: 10

Candidate Starts for Quaran19_105:

(Start: 10 @72859 has 65 MA's), (23, 73003), (24, 73030), (31, 73117), (35, 73141), (37, 73183),

Gene: Rikishi_108 Start: 72774, Stop: 73220, Start Num: 10

Candidate Starts for Rikishi_108:

(Start: 10 @72774 has 65 MA's), (23, 72918), (24, 72945), (31, 73032), (35, 73056), (37, 73098),

Gene: SaltySpittoon_105 Start: 72871, Stop: 73317, Start Num: 10

Candidate Starts for SaltySpittoon_105:

(Start: 10 @72871 has 65 MA's), (23, 73015), (24, 73042), (31, 73129), (35, 73153), (37, 73195),

Gene: Samisti12_102 Start: 73993, Stop: 74445, Start Num: 10

Candidate Starts for Samisti12_102:

(Start: 10 @73993 has 65 MA's), (15, 74053), (16, 74056), (24, 74170), (33, 74272),

Gene: Scheme_103 Start: 73398, Stop: 73850, Start Num: 10

Candidate Starts for Scheme_103:

(Start: 10 @73398 has 65 MA's), (15, 73458), (16, 73461), (24, 73575), (33, 73677),

Gene: Shuckle_100 Start: 72997, Stop: 73449, Start Num: 10

Candidate Starts for Shuckle_100:

(Start: 10 @72997 has 65 MA's), (15, 73057), (16, 73060), (24, 73174), (33, 73276),

Gene: Sollertia_106 Start: 72930, Stop: 73376, Start Num: 10

Candidate Starts for Sollertia_106:

(Start: 10 @72930 has 65 MA's), (13, 72963), (17, 73011), (23, 73074), (24, 73101), (35, 73212),

Gene: Spelly_106 Start: 72823, Stop: 73269, Start Num: 10

Candidate Starts for Spelly_106:

(Start: 10 @72823 has 65 MA's), (23, 72967), (24, 72994), (31, 73081), (35, 73105), (37, 73147),

Gene: Spilled_107 Start: 72940, Stop: 73386, Start Num: 10

Candidate Starts for Spilled_107:

(Start: 10 @72940 has 65 MA's), (23, 73084), (24, 73111), (31, 73198), (35, 73222), (37, 73264),

Gene: Squillium_103 Start: 73162, Stop: 73614, Start Num: 10

Candidate Starts for Squillium_103:

(6, 73129), (Start: 10 @73162 has 65 MA's), (15, 73222), (16, 73225), (24, 73339), (33, 73441),

Gene: Stanimal_106 Start: 72819, Stop: 73265, Start Num: 10

Candidate Starts for Stanimal_106:

(Start: 10 @72819 has 65 MA's), (13, 72852), (17, 72900), (23, 72963), (24, 72990), (35, 73101),

Gene: Starbow_104 Start: 72844, Stop: 73290, Start Num: 10

Candidate Starts for Starbow_104:

(Start: 10 @72844 has 65 MA's), (23, 72988), (24, 73015), (31, 73102), (35, 73126), (37, 73168),

Gene: Sushi23_101 Start: 72973, Stop: 73425, Start Num: 10

Candidate Starts for Sushi23_101:

(Start: 10 @72973 has 65 MA's), (15, 73033), (16, 73036), (24, 73150), (33, 73252),

Gene: Targaryen_102 Start: 73703, Stop: 74134, Start Num: 10

Candidate Starts for Targaryen_102:

(Start: 10 @73703 has 65 MA's), (16, 73766), (27, 73904), (38, 74024), (40, 74036), (46, 74078), (48, 74090),

Gene: Teutsch_102 Start: 73172, Stop: 73624, Start Num: 10

Candidate Starts for Teutsch_102:

(Start: 10 @73172 has 65 MA's), (15, 73232), (16, 73235), (24, 73349), (33, 73451),

Gene: TomSawyer_104 Start: 72462, Stop: 72908, Start Num: 10

Candidate Starts for TomSawyer_104:

(Start: 10 @72462 has 65 MA's), (23, 72606), (24, 72633), (31, 72720), (35, 72744), (37, 72786),

Gene: Tomas_107 Start: 74941, Stop: 75384, Start Num: 10

Candidate Starts for Tomas_107:

(Start: 10 @74941 has 65 MA's), (15, 75001), (16, 75004), (21, 75067), (24, 75118), (27, 75151), (29, 75190), (33, 75220),

Gene: Tribute_101 Start: 72859, Stop: 73311, Start Num: 10

Candidate Starts for Tribute_101:

(Start: 10 @72859 has 65 MA's), (15, 72919), (16, 72922), (24, 73036), (33, 73138),

Gene: Wakanda_85 Start: 65673, Stop: 66098, Start Num: 10

Candidate Starts for Wakanda_85:

(Start: 10 @65673 has 65 MA's), (27, 65877), (32, 65931), (36, 65985), (47, 66057), (49, 66069),

Gene: Warpy_105 Start: 73167, Stop: 73598, Start Num: 10

Candidate Starts for Warpy_105:

(Start: 10 @73167 has 65 MA's), (16, 73230), (27, 73368), (38, 73488), (40, 73500), (46, 73542), (48, 73554),

Gene: Watermoore_101 Start: 73388, Stop: 73840, Start Num: 10

Candidate Starts for Watermoore_101:

(Start: 10 @73388 has 65 MA's), (15, 73448), (16, 73451), (24, 73565), (33, 73667),

Gene: WhereRU_99 Start: 72355, Stop: 72807, Start Num: 10

Candidate Starts for WhereRU_99:

(6, 72322), (Start: 10 @72355 has 65 MA's), (15, 72415), (16, 72418), (24, 72532), (33, 72634), (43, 72724),

Gene: Wipeout_103 Start: 73213, Stop: 73659, Start Num: 10

Candidate Starts for Wipeout_103:

(Start: 10 @73213 has 65 MA's), (23, 73357), (24, 73384), (31, 73471), (35, 73495), (37, 73537),

Gene: Yaboi_106 Start: 72907, Stop: 73353, Start Num: 10

Candidate Starts for Yaboi_106:

(Start: 10 @72907 has 65 MA's), (13, 72940), (17, 72988), (23, 73051), (24, 73078), (35, 73189),