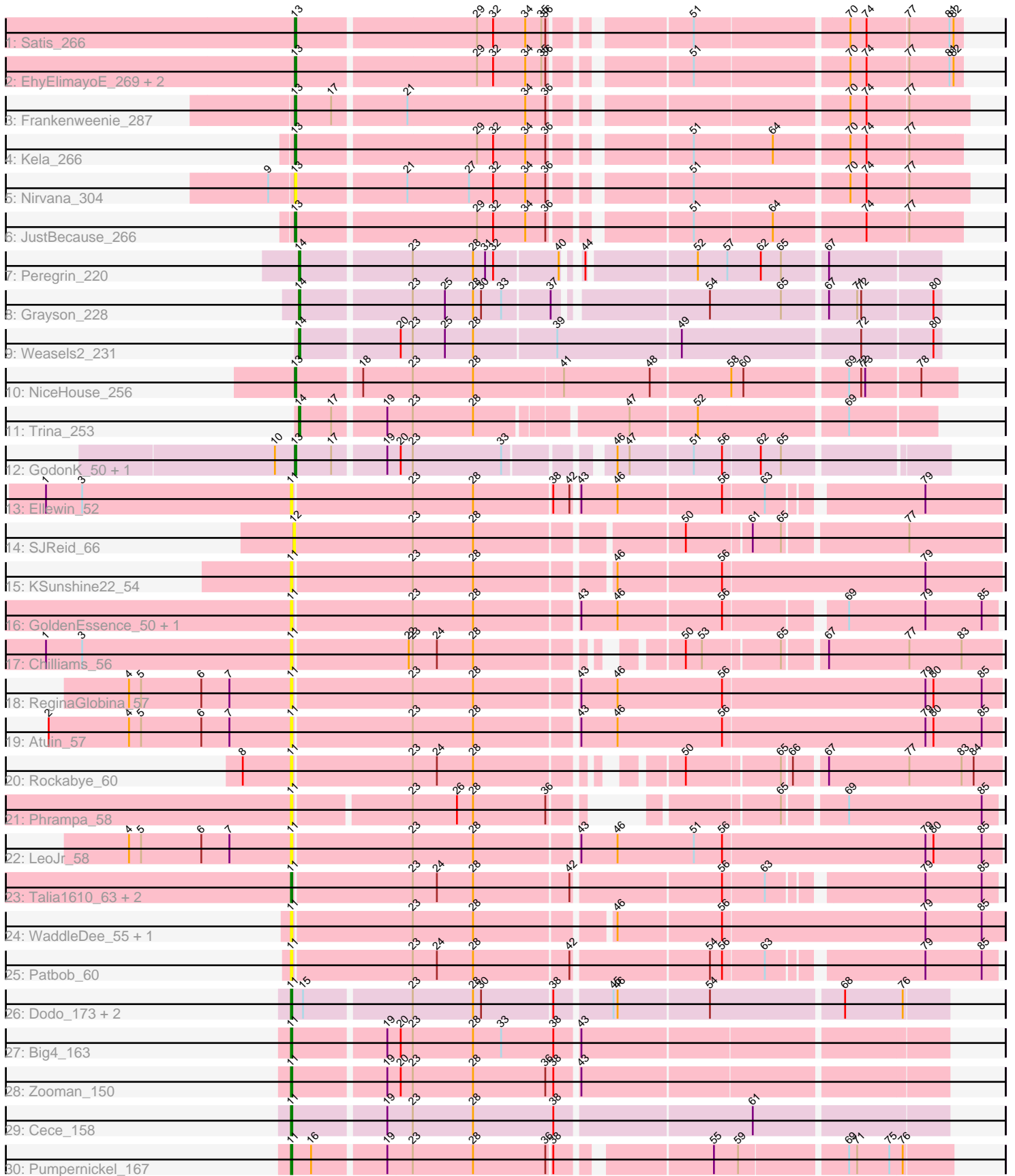


Pham 198086



Note: Tracks are now grouped by subcluster and scaled. Switching in subcluster is indicated by changes in track color. Track scale is now set by default to display the region 30 bp upstream of start 1 to 30 bp downstream of the last possible start. If this default region is judged to be packed too tightly with annotated starts, the track will be further scaled to only show that region of the ORF with annotated starts. This action will be indicated by adding "Zoomed" to the title. For starts, yellow indicates the location of called starts comprised solely of Glimmer/GeneMark auto-annotations, green indicates the location of called starts with at least 1 manual gene annotation.

Pham 198086 Report

This analysis was run 01/18/25 on database version 583.

Pham number 198086 has 39 members, 17 are drafts.

Phages represented in each track:

- Track 1 : Satis_266
- Track 2 : EhyElimayoE_269, Kradal_266, Quantum_264
- Track 3 : Frankenweenie_287
- Track 4 : Kela_266
- Track 5 : Nirvana_304
- Track 6 : JustBecause_266
- Track 7 : Peregrin_220
- Track 8 : Grayson_228
- Track 9 : Weasels2_231
- Track 10 : NiceHouse_256
- Track 11 : Trina_253
- Track 12 : GodonK_50, Phendrix_50
- Track 13 : Ellewin_52
- Track 14 : SJReid_66
- Track 15 : KSunshine22_54
- Track 16 : GoldenEssence_50, Bloom_67
- Track 17 : Chilliams_56
- Track 18 : ReginaGlobina_57
- Track 19 : Atuin_57
- Track 20 : Rockabye_60
- Track 21 : Phrampa_58
- Track 22 : LeoJr_58
- Track 23 : Talia1610_63, Mimi_69, Racecar_64
- Track 24 : WaddleDee_55, DunneganBoMo_54
- Track 25 : Patbob_60
- Track 26 : Dodo_173, A3Wally_171, PauloDiaboli_171
- Track 27 : Big4_163
- Track 28 : Zooman_150
- Track 29 : Cece_158
- Track 30 : Pumpnickel_167

Summary of Final Annotations (See graph section above for start numbers):

The start number called the most often in the published annotations is 13, it was called in 10 of the 22 non-draft genes in the pham.

Genes that call this "Most Annotated" start:

- EhyElimayoE_269, Frankenweenie_287, GodonK_50, JustBecause_266, Kela_266, Kradal_266, NiceHouse_256, Nirvana_304, Phendrix_50, Quantum_264, Satis_266,

Genes that have the "Most Annotated" start but do not call it:

-

Genes that do not have the "Most Annotated" start:

- A3Wally_171, Atuin_57, Big4_163, Bloom_67, Cece_158, Chilliams_56, Dodo_173, DunneganBoMo_54, Ellewin_52, GoldenEssence_50, Grayson_228, KSunshine22_54, LeoJr_58, Mimi_69, Patbob_60, PauloDiaboli_171, Peregrin_220, Phrampa_58, Pumpernickel_167, Racecar_64, ReginaGlobina_57, Rockabye_60, SJReid_66, Talia1610_63, Trina_253, WaddleDee_55, Weasels2_231, Zooman_150,

Summary by start number:

Start 11:

- Found in 23 of 39 (59.0%) of genes in pham
- Manual Annotations of this start: 8 of 22
- Called 100.0% of time when present
- Phage (with cluster) where this start called: A3Wally_171 (GD1), Atuin_57 (FC), Big4_163 (GD2), Bloom_67 (FC), Cece_158 (GD3), Chilliams_56 (FC), Dodo_173 (GD1), DunneganBoMo_54 (FC), Ellewin_52 (FC), GoldenEssence_50 (FC), KSunshine22_54 (FC), LeoJr_58 (FC), Mimi_69 (FC), Patbob_60 (FC), PauloDiaboli_171 (GD1), Phrampa_58 (FC), Pumpernickel_167 (GD4), Racecar_64 (FC), ReginaGlobina_57 (FC), Rockabye_60 (FC), Talia1610_63 (FC), WaddleDee_55 (FC), Zooman_150 (GD2),

Start 12:

- Found in 1 of 39 (2.6%) of genes in pham
- No Manual Annotations of this start.
- Called 100.0% of time when present
- Phage (with cluster) where this start called: SJReid_66 (FC),

Start 13:

- Found in 11 of 39 (28.2%) of genes in pham
- Manual Annotations of this start: 10 of 22
- Called 100.0% of time when present
- Phage (with cluster) where this start called: EhyElimayoE_269 (BM), Frankenweenie_287 (BM), GodonK_50 (DK), JustBecause_266 (BM), Kela_266 (BM), Kradal_266 (BM), NiceHouse_256 (CE), Nirvana_304 (BM), Phendrix_50 (DK), Quantum_264 (BM), Satis_266 (BM),

Start 14:

- Found in 4 of 39 (10.3%) of genes in pham
- Manual Annotations of this start: 4 of 22
- Called 100.0% of time when present
- Phage (with cluster) where this start called: Grayson_228 (CB), Peregrin_220 (CB), Trina_253 (CE), Weasels2_231 (CB),

Summary by clusters:

There are 9 clusters represented in this pham: GD1, GD2, GD3, GD4, DK, BM, CE, FC, CB,

Info for manual annotations of cluster BM:

- Start number 13 was manually annotated 7 times for cluster BM.

Info for manual annotations of cluster CB:

- Start number 14 was manually annotated 3 times for cluster CB.

Info for manual annotations of cluster CE:

- Start number 13 was manually annotated 1 time for cluster CE.
- Start number 14 was manually annotated 1 time for cluster CE.

Info for manual annotations of cluster DK:

- Start number 13 was manually annotated 2 times for cluster DK.

Info for manual annotations of cluster FC:

- Start number 11 was manually annotated 2 times for cluster FC.

Info for manual annotations of cluster GD1:

- Start number 11 was manually annotated 2 times for cluster GD1.

Info for manual annotations of cluster GD2:

- Start number 11 was manually annotated 2 times for cluster GD2.

Info for manual annotations of cluster GD3:

- Start number 11 was manually annotated 1 time for cluster GD3.

Info for manual annotations of cluster GD4:

- Start number 11 was manually annotated 1 time for cluster GD4.

Gene Information:

Gene: A3Wally_171 Start: 96202, Stop: 96663, Start Num: 11

Candidate Starts for A3Wally_171:

(Start: 11 @96202 has 8 MA's), (15, 96211), (23, 96286), (28, 96331), (30, 96337), (38, 96388), (45, 96427), (46, 96430), (54, 96496), (68, 96589), (76, 96631),

Gene: Atuin_57 Start: 22728, Stop: 23243, Start Num: 11

Candidate Starts for Atuin_57:

(2, 22548), (4, 22608), (5, 22617), (6, 22662), (7, 22683), (Start: 11 @22728 has 8 MA's), (23, 22815), (28, 22860), (43, 22932), (46, 22959), (56, 23037), (79, 23187), (80, 23193), (85, 23229),

Gene: Big4_163 Start: 93329, Stop: 93793, Start Num: 11

Candidate Starts for Big4_163:

(Start: 11 @93329 has 8 MA's), (19, 93395), (20, 93404), (23, 93413), (28, 93458), (33, 93479), (38, 93518), (43, 93533),

Gene: Bloom_67 Start: 26741, Stop: 27235, Start Num: 11

Candidate Starts for Bloom_67:

(Start: 11 @26741 has 8 MA's), (23, 26828), (28, 26873), (43, 26945), (46, 26972), (56, 27047), (69, 27125), (79, 27182), (85, 27224),

Gene: Cece_158 Start: 98749, Stop: 99213, Start Num: 11

Candidate Starts for Cece_158:

(Start: 11 @98749 has 8 MA's), (19, 98815), (23, 98833), (28, 98878), (38, 98938), (61, 99076),

Gene: Chilliams_56 Start: 24656, Stop: 25129, Start Num: 11

Candidate Starts for Chilliams_56:

(1, 24473), (3, 24500), (Start: 11 @24656 has 8 MA's), (22, 24740), (23, 24743), (24, 24761), (28, 24788), (50, 24908), (53, 24920), (65, 24974), (67, 25001), (77, 25061), (83, 25100),

Gene: Dodo_173 Start: 95808, Stop: 96269, Start Num: 11

Candidate Starts for Dodo_173:

(Start: 11 @95808 has 8 MA's), (15, 95817), (23, 95892), (28, 95937), (30, 95943), (38, 95994), (45, 96033), (46, 96036), (54, 96102), (68, 96195), (76, 96237),

Gene: DunneganBoMo_54 Start: 20816, Stop: 21325, Start Num: 11

Candidate Starts for DunneganBoMo_54:

(Start: 11 @20816 has 8 MA's), (23, 20903), (28, 20948), (46, 21041), (56, 21116), (79, 21266), (85, 21308),

Gene: EhyElimayoE_269 Start: 153102, Stop: 152647, Start Num: 13

Candidate Starts for EhyElimayoE_269:

(Start: 13 @153102 has 10 MA's), (29, 152973), (32, 152961), (34, 152937), (35, 152925), (36, 152922), (51, 152835), (70, 152727), (74, 152715), (77, 152685), (81, 152655), (82, 152652),

Gene: Ellewin_52 Start: 20408, Stop: 20902, Start Num: 11

Candidate Starts for Ellewin_52:

(1, 20225), (3, 20252), (Start: 11 @20408 has 8 MA's), (23, 20495), (28, 20540), (38, 20597), (42, 20609), (43, 20612), (46, 20639), (56, 20714), (63, 20744), (79, 20846),

Gene: Frankenweenie_287 Start: 164243, Stop: 163782, Start Num: 13

Candidate Starts for Frankenweenie_287:

(Start: 13 @164243 has 10 MA's), (17, 164216), (21, 164165), (34, 164078), (36, 164063), (70, 163868), (74, 163856), (77, 163826),

Gene: GodonK_50 Start: 16803, Stop: 17243, Start Num: 13

Candidate Starts for GodonK_50:

(10, 16788), (Start: 13 @16803 has 10 MA's), (17, 16830), (19, 16866), (20, 16875), (23, 16884), (33, 16950), (46, 17013), (47, 17022), (51, 17067), (56, 17088), (62, 17115), (65, 17130),

Gene: GoldenEssence_50 Start: 19822, Stop: 20316, Start Num: 11

Candidate Starts for GoldenEssence_50:

(Start: 11 @19822 has 8 MA's), (23, 19909), (28, 19954), (43, 20026), (46, 20053), (56, 20128), (69, 20206), (79, 20263), (85, 20305),

Gene: Grayson_228 Start: 111586, Stop: 112026, Start Num: 14

Candidate Starts for Grayson_228:

(Start: 14 @111586 has 4 MA's), (23, 111664), (25, 111688), (28, 111709), (30, 111715), (33, 111730), (37, 111763), (54, 111865), (65, 111916), (67, 111946), (71, 111967), (72, 111970), (80, 112021),

Gene: JustBecause_266 Start: 149782, Stop: 149327, Start Num: 13

Candidate Starts for JustBecause_266:

(Start: 13 @149782 has 10 MA's), (29, 149653), (32, 149641), (34, 149617), (36, 149602), (51, 149515), (64, 149458), (74, 149395), (77, 149365),

Gene: KSunshine22_54 Start: 21439, Stop: 21945, Start Num: 11

Candidate Starts for KSunshine22_54:

(Start: 11 @21439 has 8 MA's), (23, 21526), (28, 21571), (46, 21664), (56, 21739), (79, 21889),

Gene: Kela_266 Start: 151386, Stop: 150931, Start Num: 13

Candidate Starts for Kela_266:

(Start: 13 @151386 has 10 MA's), (29, 151257), (32, 151245), (34, 151221), (36, 151206), (51, 151119), (64, 151062), (70, 151011), (74, 150999), (77, 150969),

Gene: Kradal_266 Start: 153099, Stop: 152644, Start Num: 13

Candidate Starts for Kradal_266:

(Start: 13 @153099 has 10 MA's), (29, 152970), (32, 152958), (34, 152934), (35, 152922), (36, 152919), (51, 152832), (70, 152724), (74, 152712), (77, 152682), (81, 152652), (82, 152649),

Gene: LeoJr_58 Start: 22928, Stop: 23443, Start Num: 11

Candidate Starts for LeoJr_58:

(4, 22808), (5, 22817), (6, 22862), (7, 22883), (Start: 11 @22928 has 8 MA's), (23, 23015), (28, 23060), (43, 23132), (46, 23159), (51, 23216), (56, 23237), (79, 23387), (80, 23393), (85, 23429),

Gene: Mimi_69 Start: 26091, Stop: 26582, Start Num: 11

Candidate Starts for Mimi_69:

(Start: 11 @26091 has 8 MA's), (23, 26178), (24, 26196), (28, 26223), (42, 26292), (56, 26397), (63, 26427), (79, 26529), (85, 26571),

Gene: NiceHouse_256 Start: 128727, Stop: 129197, Start Num: 13

Candidate Starts for NiceHouse_256:

(Start: 13 @128727 has 10 MA's), (18, 128772), (23, 128808), (28, 128853), (41, 128919), (48, 128982), (58, 129039), (60, 129048), (69, 129120), (72, 129129), (73, 129132), (78, 129171),

Gene: Nirvana_304 Start: 164957, Stop: 164496, Start Num: 13

Candidate Starts for Nirvana_304:

(9, 164975), (Start: 13 @164957 has 10 MA's), (21, 164879), (27, 164834), (32, 164816), (34, 164792), (36, 164777), (51, 164690), (70, 164582), (74, 164570), (77, 164540),

Gene: Patbob_60 Start: 25547, Stop: 26038, Start Num: 11

Candidate Starts for Patbob_60:

(Start: 11 @25547 has 8 MA's), (23, 25634), (24, 25652), (28, 25679), (42, 25748), (54, 25844), (56, 25853), (63, 25883), (79, 25985), (85, 26027),

Gene: PauloDiaboli_171 Start: 94249, Stop: 94710, Start Num: 11

Candidate Starts for PauloDiaboli_171:

(Start: 11 @94249 has 8 MA's), (15, 94258), (23, 94333), (28, 94378), (30, 94384), (38, 94435), (45, 94474), (46, 94477), (54, 94543), (68, 94636), (76, 94678),

Gene: Peregrin_220 Start: 110987, Stop: 111421, Start Num: 14

Candidate Starts for Peregrin_220:

(Start: 14 @110987 has 4 MA's), (23, 111065), (28, 111110), (31, 111119), (32, 111125), (40, 111170), (44, 111176), (52, 111251), (57, 111272), (62, 111296), (65, 111311), (67, 111341),

Gene: Phendrix_50 Start: 16816, Stop: 17256, Start Num: 13

Candidate Starts for Phendrix_50:

(10, 16801), (Start: 13 @16816 has 10 MA's), (17, 16843), (19, 16879), (20, 16888), (23, 16897), (33, 16963), (46, 17026), (47, 17035), (51, 17080), (56, 17101), (62, 17128), (65, 17143),

Gene: Phrampa_58 Start: 23330, Stop: 23773, Start Num: 11

Candidate Starts for Phrampa_58:

(Start: 11 @23330 has 8 MA's), (23, 23411), (26, 23444), (28, 23456), (36, 23510), (65, 23621), (69, 23663), (85, 23762),

Gene: Pumpernickel_167 Start: 96347, Stop: 96799, Start Num: 11

Candidate Starts for Pumpernickel_167:

(Start: 11 @96347 has 8 MA's), (16, 96362), (19, 96413), (23, 96431), (28, 96476), (36, 96530), (38, 96533), (55, 96632), (59, 96650), (69, 96725), (71, 96731), (75, 96755), (76, 96764),

Gene: Quantum_264 Start: 153093, Stop: 152638, Start Num: 13

Candidate Starts for Quantum_264:

(Start: 13 @153093 has 10 MA's), (29, 152964), (32, 152952), (34, 152928), (35, 152916), (36, 152913), (51, 152826), (70, 152718), (74, 152706), (77, 152676), (81, 152646), (82, 152643),

Gene: Racecar_64 Start: 26744, Stop: 27235, Start Num: 11

Candidate Starts for Racecar_64:

(Start: 11 @26744 has 8 MA's), (23, 26831), (24, 26849), (28, 26876), (42, 26945), (56, 27050), (63, 27080), (79, 27182), (85, 27224),

Gene: ReginaGlobina_57 Start: 23125, Stop: 23640, Start Num: 11

Candidate Starts for ReginaGlobina_57:

(4, 23005), (5, 23014), (6, 23059), (7, 23080), (Start: 11 @23125 has 8 MA's), (23, 23212), (28, 23257), (43, 23329), (46, 23356), (56, 23434), (79, 23584), (80, 23590), (85, 23626),

Gene: Rockabye_60 Start: 25473, Stop: 25946, Start Num: 11

Candidate Starts for Rockabye_60:

(8, 25437), (Start: 11 @25473 has 8 MA's), (23, 25560), (24, 25578), (28, 25605), (50, 25725), (65, 25791), (66, 25797), (67, 25818), (77, 25878), (83, 25917), (84, 25926),

Gene: SJReid_66 Start: 26527, Stop: 27021, Start Num: 12

Candidate Starts for SJReid_66:

(12, 26527), (23, 26614), (28, 26659), (50, 26800), (61, 26845), (65, 26866), (77, 26953),

Gene: Satis_266 Start: 153436, Stop: 152981, Start Num: 13

Candidate Starts for Satis_266:

(Start: 13 @153436 has 10 MA's), (29, 153307), (32, 153295), (34, 153271), (35, 153259), (36, 153256), (51, 153169), (70, 153061), (74, 153049), (77, 153019), (81, 152989), (82, 152986),

Gene: Talia1610_63 Start: 26109, Stop: 26600, Start Num: 11

Candidate Starts for Talia1610_63:

(Start: 11 @26109 has 8 MA's), (23, 26196), (24, 26214), (28, 26241), (42, 26310), (56, 26415), (63, 26445), (79, 26547), (85, 26589),

Gene: Trina_253 Start: 127069, Stop: 127509, Start Num: 14

Candidate Starts for Trina_253:

(Start: 14 @127069 has 4 MA's), (17, 127093), (19, 127129), (23, 127147), (28, 127192), (47, 127294), (52, 127342), (69, 127447),

Gene: WaddleDee_55 Start: 20852, Stop: 21361, Start Num: 11

Candidate Starts for WaddleDee_55:

(Start: 11 @20852 has 8 MA's), (23, 20939), (28, 20984), (46, 21077), (56, 21152), (79, 21302), (85, 21344),

Gene: Weasels2_231 Start: 113792, Stop: 114247, Start Num: 14

Candidate Starts for Weasels2_231:

(Start: 14 @113792 has 4 MA's), (20, 113861), (23, 113870), (25, 113894), (28, 113915), (39, 113975), (49, 114065), (72, 114191), (80, 114242),

Gene: Zooman_150 Start: 90927, Stop: 91391, Start Num: 11

Candidate Starts for Zooman_150:

(Start: 11 @90927 has 8 MA's), (19, 90993), (20, 91002), (23, 91011), (28, 91056), (36, 91110), (38, 91116), (43, 91131),