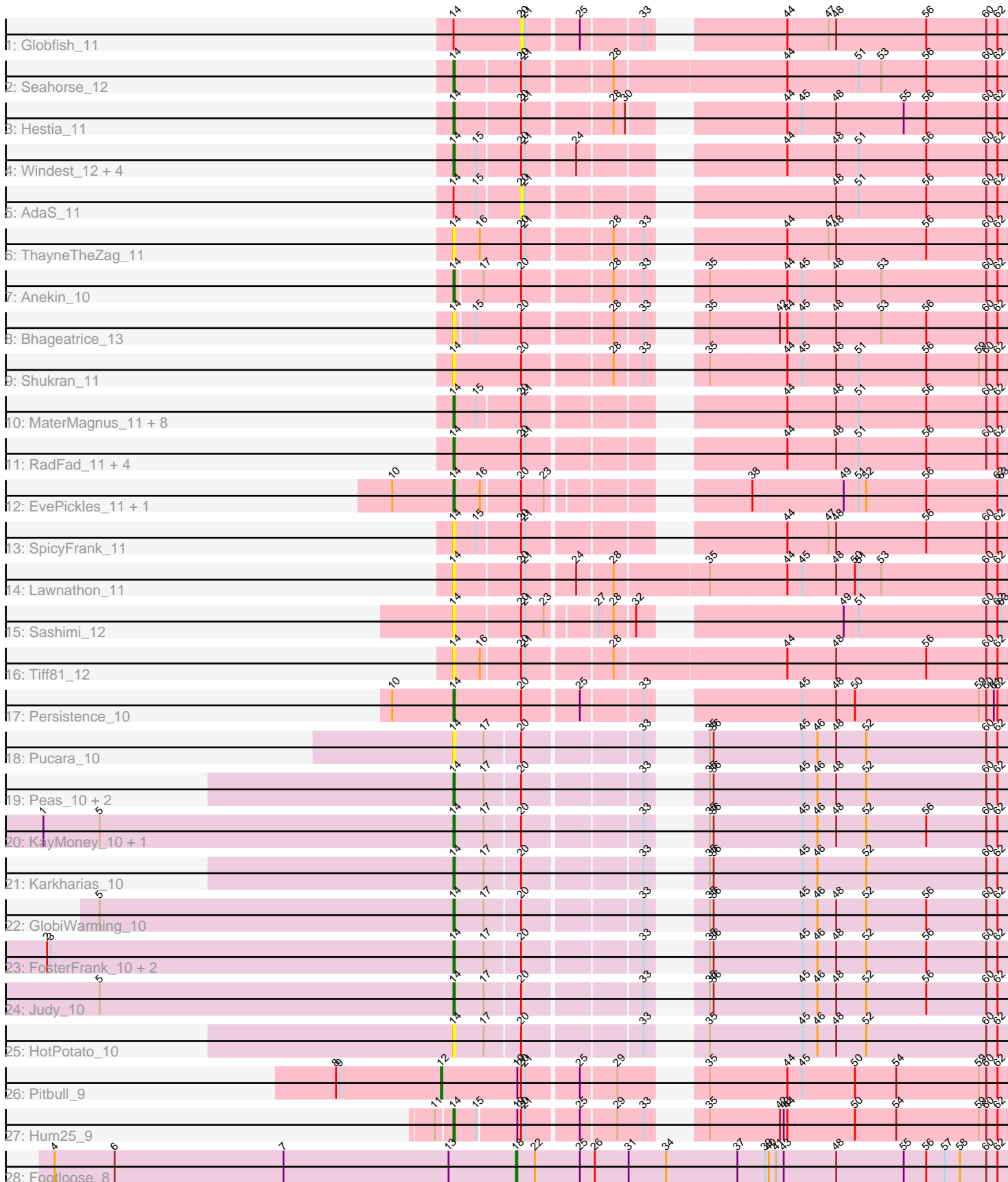


Pham 198156



Note: Tracks are now grouped by subcluster and scaled. Switching in subcluster is indicated by changes in track color. Track scale is now set by default to display the region 30 bp upstream of start 1 to 30 bp downstream of the last possible start. If this default region is judged to be packed too tightly with annotated starts, the track will be further scaled to only show that region of the ORF with annotated starts. This action will be indicated by adding "Zoomed" to the title. For starts, yellow indicates the location of called starts comprised solely of Glimmer/GeneMark auto-annotations, green indicates the location of called starts with at least 1 manual gene annotation.

Pham 198156 Report

This analysis was run 01/18/25 on database version 583.

Pham number 198156 has 50 members, 21 are drafts.

Phages represented in each track:

- Track 1 : Globfish_11
- Track 2 : Seahorse_12
- Track 3 : Hestia_11
- Track 4 : Windest_12, CookieBear_11, Raphaella_11, Isolde_12, Auxilium_11
- Track 5 : AdaS_11
- Track 6 : ThayneTheZag_11
- Track 7 : Anekin_10
- Track 8 : Bhageatrice_13
- Track 9 : Shukran_11
- Track 10 : MaterMagnus_11, Vopal_12, BenchScraper_11, Phrank15_10, Aikyam_11, Richie_11, YoungHarleezy_11, Gorpy_11, Sakai_11
- Track 11 : RadFad_11, Hillester_11, BillyTP_11, MidnightRain_11, BlueShadow_11
- Track 12 : EvePickles_11, Faja_11
- Track 13 : SpicyFrank_11
- Track 14 : Lawnathon_11
- Track 15 : Sashimi_12
- Track 16 : Tiff81_12
- Track 17 : Persistence_10
- Track 18 : Pucara_10
- Track 19 : Peas_10, Eileen_10, Bridgette_10
- Track 20 : KayMoney_10, ChuckDuck_10
- Track 21 : Karkharias_10
- Track 22 : GlobiWarming_10
- Track 23 : FosterFrank_10, Constance_10, PeggyLeg03_10
- Track 24 : Judy_10
- Track 25 : HotPotato_10
- Track 26 : Pitbull_9
- Track 27 : Hum25_9
- Track 28 : Footloose_8

Summary of Final Annotations (See graph section above for start numbers):

The start number called the most often in the published annotations is 14, it was called in 27 of the 29 non-draft genes in the pham.

Genes that call this "Most Annotated" start:

- Aikyam_11, Anekin_10, Auxilium_11, BenchScraper_11, Bhageatrice_13, BillyTP_11, BlueShadow_11, Bridgette_10, ChuckDuck_10, Constance_10, CookieBear_11, Eileen_10, EvePickles_11, Faja_11, FosterFrank_10, GlobiWarming_10, Gorpy_11, Hestia_11, Hillester_11, HotPotato_10, Hum25_9, Isolde_12, Judy_10, Karkharias_10, KayMoney_10, Lawnathon_11, MaterMagnus_11, MidnightRain_11, Peas_10, PeggyLeg03_10, Persistence_10, Phrank15_10, Pucara_10, RadFad_11, Raphaella_11, Richie_11, Sakai_11, Sashimi_12, Seahorse_12, Shukran_11, SpicyFrank_11, ThayneTheZag_11, Tiff81_12, Vopal_12, Windest_12, YoungHarleezy_11,

Genes that have the "Most Annotated" start but do not call it:

- AdaS_11, Globfish_11,

Genes that do not have the "Most Annotated" start:

- Footloose_8, Pitbull_9,

Summary by start number:

Start 12:

- Found in 1 of 50 (2.0%) of genes in pham
- Manual Annotations of this start: 1 of 29
- Called 100.0% of time when present
- Phage (with cluster) where this start called: Pitbull_9 (FQ),

Start 14:

- Found in 48 of 50 (96.0%) of genes in pham
- Manual Annotations of this start: 27 of 29
- Called 95.8% of time when present
- Phage (with cluster) where this start called: Aikyam_11 (AY), Anekin_10 (AY), Auxilium_11 (AY), BenchScraper_11 (AY), Bhageatrice_13 (AY), BillyTP_11 (AY), BlueShadow_11 (AY), Bridgette_10 (FA), ChuckDuck_10 (FA), Constance_10 (FA), CookieBear_11 (AY), Eileen_10 (FA), EvePickles_11 (AY), Faja_11 (AY), FosterFrank_10 (FA), GlobiWarming_10 (FA), Gorpy_11 (AY), Hestia_11 (AY), Hillester_11 (AY), HotPotato_10 (FA), Hum25_9 (FQ), Isolde_12 (AY), Judy_10 (FA), Karkharias_10 (FA), KayMoney_10 (FA), Lawnathon_11 (AY), MaterMagnus_11 (AY), MidnightRain_11 (AY), Peas_10 (FA), PeggyLeg03_10 (FA), Persistence_10 (AY), Phrank15_10 (AY), Pucara_10 (FA), RadFad_11 (AY), Raphaella_11 (AY), Richie_11 (AY), Sakai_11 (AY), Sashimi_12 (AY), Seahorse_12 (AY), Shukran_11 (AY), SpicyFrank_11 (AY), ThayneTheZag_11 (AY), Tiff81_12 (AY), Vopal_12 (AY), Windest_12 (AY), YoungHarleezy_11 (AY),

Start 18:

- Found in 1 of 50 (2.0%) of genes in pham
- Manual Annotations of this start: 1 of 29
- Called 100.0% of time when present
- Phage (with cluster) where this start called: Footloose_8 (singleton),

Start 20:

- Found in 49 of 50 (98.0%) of genes in pham
- No Manual Annotations of this start.
- Called 4.1% of time when present

- Phage (with cluster) where this start called: AdaS_11 (AY), Globfish_11 (AY),

Summary by clusters:

There are 4 clusters represented in this pham: AY, FA, singleton, FQ,

Info for manual annotations of cluster AY:

- Start number 14 was manually annotated 17 times for cluster AY.

Info for manual annotations of cluster FA:

- Start number 14 was manually annotated 9 times for cluster FA.

Info for manual annotations of cluster FQ:

- Start number 12 was manually annotated 1 time for cluster FQ.
- Start number 14 was manually annotated 1 time for cluster FQ.

Gene Information:

Gene: AdaS_11 Start: 7699, Stop: 8046, Start Num: 20

Candidate Starts for AdaS_11:

(Start: 14 @7648 has 27 MA's), (15, 7666), (20, 7699), (21, 7702), (48, 7906), (51, 7924), (56, 7978), (60, 8026), (62, 8035),

Gene: Aikyam_11 Start: 7649, Stop: 8047, Start Num: 14

Candidate Starts for Aikyam_11:

(Start: 14 @7649 has 27 MA's), (15, 7667), (20, 7700), (21, 7703), (44, 7868), (48, 7907), (51, 7925), (56, 7979), (60, 8027), (62, 8036),

Gene: Anekin_10 Start: 7761, Stop: 8159, Start Num: 14

Candidate Starts for Anekin_10:

(Start: 14 @7761 has 27 MA's), (17, 7782), (20, 7812), (28, 7878), (33, 7899), (35, 7920), (44, 7980), (45, 7992), (48, 8019), (53, 8055), (60, 8139), (62, 8148),

Gene: Auxilium_11 Start: 7648, Stop: 8046, Start Num: 14

Candidate Starts for Auxilium_11:

(Start: 14 @7648 has 27 MA's), (15, 7666), (20, 7699), (21, 7702), (24, 7738), (44, 7867), (48, 7906), (51, 7924), (56, 7978), (60, 8026), (62, 8035),

Gene: BenchScraper_11 Start: 7663, Stop: 8061, Start Num: 14

Candidate Starts for BenchScraper_11:

(Start: 14 @7663 has 27 MA's), (15, 7681), (20, 7714), (21, 7717), (44, 7882), (48, 7921), (51, 7939), (56, 7993), (60, 8041), (62, 8050),

Gene: Bhageatrice_13 Start: 8858, Stop: 9256, Start Num: 14

Candidate Starts for Bhageatrice_13:

(Start: 14 @8858 has 27 MA's), (15, 8873), (20, 8909), (28, 8975), (33, 8996), (35, 9017), (42, 9071), (44, 9077), (45, 9089), (48, 9116), (53, 9152), (56, 9188), (60, 9236), (62, 9245),

Gene: BillyTP_11 Start: 7651, Stop: 8052, Start Num: 14

Candidate Starts for BillyTP_11:

(Start: 14 @7651 has 27 MA's), (20, 7705), (21, 7708), (44, 7873), (48, 7912), (51, 7930), (56, 7984), (60, 8032), (62, 8041),

Gene: BlueShadow_11 Start: 7645, Stop: 8046, Start Num: 14

Candidate Starts for BlueShadow_11:

(Start: 14 @7645 has 27 MA's), (20, 7699), (21, 7702), (44, 7867), (48, 7906), (51, 7924), (56, 7978), (60, 8026), (62, 8035),

Gene: Bridgette_10 Start: 7800, Stop: 8198, Start Num: 14

Candidate Starts for Bridgette_10:

(Start: 14 @7800 has 27 MA's), (17, 7824), (20, 7851), (33, 7938), (35, 7959), (36, 7962), (45, 8031), (46, 8043), (48, 8058), (52, 8082), (60, 8178), (62, 8187),

Gene: ChuckDuck_10 Start: 7756, Stop: 8154, Start Num: 14

Candidate Starts for ChuckDuck_10:

(1, 7429), (5, 7474), (Start: 14 @7756 has 27 MA's), (17, 7780), (20, 7807), (33, 7894), (35, 7915), (36, 7918), (45, 7987), (46, 7999), (48, 8014), (52, 8038), (56, 8086), (60, 8134), (62, 8143),

Gene: Constance_10 Start: 7802, Stop: 8200, Start Num: 14

Candidate Starts for Constance_10:

(2, 7478), (3, 7481), (Start: 14 @7802 has 27 MA's), (17, 7826), (20, 7853), (33, 7940), (35, 7961), (36, 7964), (45, 8033), (46, 8045), (48, 8060), (52, 8084), (56, 8132), (60, 8180), (62, 8189),

Gene: CookieBear_11 Start: 7648, Stop: 8046, Start Num: 14

Candidate Starts for CookieBear_11:

(Start: 14 @7648 has 27 MA's), (15, 7666), (20, 7699), (21, 7702), (24, 7738), (44, 7867), (48, 7906), (51, 7924), (56, 7978), (60, 8026), (62, 8035),

Gene: Eileen_10 Start: 7765, Stop: 8163, Start Num: 14

Candidate Starts for Eileen_10:

(Start: 14 @7765 has 27 MA's), (17, 7789), (20, 7816), (33, 7903), (35, 7924), (36, 7927), (45, 7996), (46, 8008), (48, 8023), (52, 8047), (60, 8143), (62, 8152),

Gene: EvePickles_11 Start: 7704, Stop: 8099, Start Num: 14

Candidate Starts for EvePickles_11:

(10, 7656), (Start: 14 @7704 has 27 MA's), (16, 7725), (20, 7755), (23, 7773), (38, 7893), (49, 7965), (51, 7977), (52, 7983), (56, 8031), (62, 8088), (63, 8091),

Gene: Faja_11 Start: 7648, Stop: 8043, Start Num: 14

Candidate Starts for Faja_11:

(10, 7600), (Start: 14 @7648 has 27 MA's), (16, 7669), (20, 7699), (23, 7717), (38, 7837), (49, 7909), (51, 7921), (52, 7927), (56, 7975), (62, 8032), (63, 8035),

Gene: Footloose_8 Start: 6238, Stop: 6630, Start Num: 18

Candidate Starts for Footloose_8:

(4, 5869), (6, 5917), (7, 6052), (13, 6184), (Start: 18 @6238 has 1 MA's), (22, 6253), (25, 6289), (26, 6301), (31, 6328), (34, 6358), (37, 6415), (39, 6436), (40, 6439), (41, 6445), (43, 6451), (48, 6493), (55, 6547), (56, 6565), (57, 6580), (58, 6592), (60, 6613), (62, 6622),

Gene: FosterFrank_10 Start: 7760, Stop: 8158, Start Num: 14

Candidate Starts for FosterFrank_10:

(2, 7436), (3, 7439), (Start: 14 @7760 has 27 MA's), (17, 7784), (20, 7811), (33, 7898), (35, 7919), (36, 7922), (45, 7991), (46, 8003), (48, 8018), (52, 8042), (56, 8090), (60, 8138), (62, 8147),

Gene: Globfish_11 Start: 7747, Stop: 8094, Start Num: 20

Candidate Starts for Globfish_11:

(Start: 14 @7693 has 27 MA's), (20, 7747), (21, 7750), (25, 7789), (33, 7834), (44, 7915), (47, 7948), (48, 7954), (56, 8026), (60, 8074), (62, 8083),

Gene: GlobiWarming_10 Start: 7757, Stop: 8155, Start Num: 14

Candidate Starts for GlobiWarming_10:

(5, 7475), (Start: 14 @7757 has 27 MA's), (17, 7781), (20, 7808), (33, 7895), (35, 7916), (36, 7919), (45, 7988), (46, 8000), (48, 8015), (52, 8039), (56, 8087), (60, 8135), (62, 8144),

Gene: Gorpy_11 Start: 7657, Stop: 8055, Start Num: 14

Candidate Starts for Gorpy_11:

(Start: 14 @7657 has 27 MA's), (15, 7675), (20, 7708), (21, 7711), (44, 7876), (48, 7915), (51, 7933), (56, 7987), (60, 8035), (62, 8044),

Gene: Hestia_11 Start: 7761, Stop: 8159, Start Num: 14

Candidate Starts for Hestia_11:

(Start: 14 @7761 has 27 MA's), (20, 7812), (21, 7815), (28, 7878), (30, 7887), (44, 7980), (45, 7992), (48, 8019), (55, 8073), (56, 8091), (60, 8139), (62, 8148),

Gene: Hillester_11 Start: 7645, Stop: 8046, Start Num: 14

Candidate Starts for Hillester_11:

(Start: 14 @7645 has 27 MA's), (20, 7699), (21, 7702), (44, 7867), (48, 7906), (51, 7924), (56, 7978), (60, 8026), (62, 8035),

Gene: HotPotato_10 Start: 7765, Stop: 8163, Start Num: 14

Candidate Starts for HotPotato_10:

(Start: 14 @7765 has 27 MA's), (17, 7789), (20, 7816), (33, 7903), (35, 7924), (45, 7996), (46, 8008), (48, 8023), (52, 8047), (60, 8143), (62, 8152),

Gene: Hum25_9 Start: 6488, Stop: 6889, Start Num: 14

Candidate Starts for Hum25_9:

(11, 6476), (Start: 14 @6488 has 27 MA's), (15, 6506), (19, 6536), (20, 6539), (21, 6542), (25, 6581), (29, 6608), (33, 6629), (35, 6650), (42, 6704), (43, 6707), (44, 6710), (50, 6764), (54, 6797), (59, 6863), (60, 6869), (62, 6878),

Gene: Isolde_12 Start: 7719, Stop: 8117, Start Num: 14

Candidate Starts for Isolde_12:

(Start: 14 @7719 has 27 MA's), (15, 7737), (20, 7770), (21, 7773), (24, 7809), (44, 7938), (48, 7977), (51, 7995), (56, 8049), (60, 8097), (62, 8106),

Gene: Judy_10 Start: 7801, Stop: 8199, Start Num: 14

Candidate Starts for Judy_10:

(5, 7519), (Start: 14 @7801 has 27 MA's), (17, 7825), (20, 7852), (33, 7939), (35, 7960), (36, 7963), (45, 8032), (46, 8044), (48, 8059), (52, 8083), (56, 8131), (60, 8179), (62, 8188),

Gene: Karkharias_10 Start: 7761, Stop: 8159, Start Num: 14

Candidate Starts for Karkharias_10:

(Start: 14 @7761 has 27 MA's), (17, 7785), (20, 7812), (33, 7899), (35, 7920), (36, 7923), (45, 7992), (46, 8004), (52, 8043), (60, 8139), (62, 8148),

Gene: KayMoney_10 Start: 7758, Stop: 8156, Start Num: 14

Candidate Starts for KayMoney_10:

(1, 7431), (5, 7476), (Start: 14 @7758 has 27 MA's), (17, 7782), (20, 7809), (33, 7896), (35, 7917), (36, 7920), (45, 7989), (46, 8001), (48, 8016), (52, 8040), (56, 8088), (60, 8136), (62, 8145),

Gene: Lawnathon_11 Start: 7769, Stop: 8197, Start Num: 14

Candidate Starts for Lawnathon_11:

(Start: 14 @7769 has 27 MA's), (20, 7820), (21, 7823), (24, 7859), (28, 7886), (35, 7958), (44, 8018), (45, 8030), (48, 8057), (50, 8072), (51, 8075), (53, 8093), (60, 8177), (62, 8186),

Gene: MaterMagnus_11 Start: 7649, Stop: 8047, Start Num: 14

Candidate Starts for MaterMagnus_11:

(Start: 14 @7649 has 27 MA's), (15, 7667), (20, 7700), (21, 7703), (44, 7868), (48, 7907), (51, 7925), (56, 7979), (60, 8027), (62, 8036),

Gene: MidnightRain_11 Start: 7645, Stop: 8046, Start Num: 14

Candidate Starts for MidnightRain_11:

(Start: 14 @7645 has 27 MA's), (20, 7699), (21, 7702), (44, 7867), (48, 7906), (51, 7924), (56, 7978), (60, 8026), (62, 8035),

Gene: Peas_10 Start: 7765, Stop: 8163, Start Num: 14

Candidate Starts for Peas_10:

(Start: 14 @7765 has 27 MA's), (17, 7789), (20, 7816), (33, 7903), (35, 7924), (36, 7927), (45, 7996), (46, 8008), (48, 8023), (52, 8047), (60, 8143), (62, 8152),

Gene: PeggyLeg03_10 Start: 7802, Stop: 8200, Start Num: 14

Candidate Starts for PeggyLeg03_10:

(2, 7478), (3, 7481), (Start: 14 @7802 has 27 MA's), (17, 7826), (20, 7853), (33, 7940), (35, 7961), (36, 7964), (45, 8033), (46, 8045), (48, 8060), (52, 8084), (56, 8132), (60, 8180), (62, 8189),

Gene: Persistence_10 Start: 7716, Stop: 8117, Start Num: 14

Candidate Starts for Persistence_10:

(10, 7668), (Start: 14 @7716 has 27 MA's), (20, 7770), (25, 7812), (33, 7857), (45, 7950), (48, 7977), (50, 7992), (59, 8091), (60, 8097), (61, 8103), (62, 8106),

Gene: Phrank15_10 Start: 7801, Stop: 8199, Start Num: 14

Candidate Starts for Phrank15_10:

(Start: 14 @7801 has 27 MA's), (15, 7819), (20, 7852), (21, 7855), (44, 8020), (48, 8059), (51, 8077), (56, 8131), (60, 8179), (62, 8188),

Gene: Pitbull_9 Start: 6106, Stop: 6519, Start Num: 12

Candidate Starts for Pitbull_9:

(8, 6022), (9, 6025), (Start: 12 @6106 has 1 MA's), (19, 6166), (20, 6169), (21, 6172), (25, 6211), (29, 6238), (35, 6280), (44, 6340), (45, 6352), (50, 6394), (54, 6427), (59, 6493), (60, 6499), (62, 6508),

Gene: Pucara_10 Start: 7764, Stop: 8162, Start Num: 14

Candidate Starts for Pucara_10:

(Start: 14 @7764 has 27 MA's), (17, 7788), (20, 7815), (33, 7902), (35, 7923), (36, 7926), (45, 7995), (46, 8007), (48, 8022), (52, 8046), (60, 8142), (62, 8151),

Gene: RadFad_11 Start: 7645, Stop: 8046, Start Num: 14

Candidate Starts for RadFad_11:

(Start: 14 @7645 has 27 MA's), (20, 7699), (21, 7702), (44, 7867), (48, 7906), (51, 7924), (56, 7978), (60, 8026), (62, 8035),

Gene: Raphaella_11 Start: 7648, Stop: 8046, Start Num: 14

Candidate Starts for Raphaella_11:

(Start: 14 @7648 has 27 MA's), (15, 7666), (20, 7699), (21, 7702), (24, 7738), (44, 7867), (48, 7906), (51, 7924), (56, 7978), (60, 8026), (62, 8035),

Gene: Richie_11 Start: 7663, Stop: 8061, Start Num: 14

Candidate Starts for Richie_11:

(Start: 14 @7663 has 27 MA's), (15, 7681), (20, 7714), (21, 7717), (44, 7882), (48, 7921), (51, 7939), (56, 7993), (60, 8041), (62, 8050),

Gene: Sakai_11 Start: 7657, Stop: 8055, Start Num: 14

Candidate Starts for Sakai_11:

(Start: 14 @7657 has 27 MA's), (15, 7675), (20, 7708), (21, 7711), (44, 7876), (48, 7915), (51, 7933), (56, 7987), (60, 8035), (62, 8044),

Gene: Sashimi_12 Start: 7763, Stop: 8158, Start Num: 14

Candidate Starts for Sashimi_12:

(Start: 14 @7763 has 27 MA's), (20, 7814), (21, 7817), (23, 7832), (27, 7865), (28, 7877), (32, 7892), (49, 8024), (51, 8036), (60, 8138), (62, 8147), (63, 8150),

Gene: Seahorse_12 Start: 7870, Stop: 8298, Start Num: 14

Candidate Starts for Seahorse_12:

(Start: 14 @7870 has 27 MA's), (20, 7921), (21, 7924), (28, 7987), (44, 8119), (51, 8176), (53, 8194), (56, 8230), (60, 8278), (62, 8287),

Gene: Shukran_11 Start: 7600, Stop: 8001, Start Num: 14

Candidate Starts for Shukran_11:

(Start: 14 @7600 has 27 MA's), (20, 7654), (28, 7720), (33, 7741), (35, 7762), (44, 7822), (45, 7834), (48, 7861), (51, 7879), (56, 7933), (59, 7975), (60, 7981), (62, 7990),

Gene: SpicyFrank_11 Start: 7711, Stop: 8109, Start Num: 14

Candidate Starts for SpicyFrank_11:

(Start: 14 @7711 has 27 MA's), (15, 7729), (20, 7762), (21, 7765), (44, 7930), (47, 7963), (48, 7969), (56, 8041), (60, 8089), (62, 8098),

Gene: ThayneTheZag_11 Start: 7685, Stop: 8086, Start Num: 14

Candidate Starts for ThayneTheZag_11:

(Start: 14 @7685 has 27 MA's), (16, 7706), (20, 7739), (21, 7742), (28, 7805), (33, 7826), (44, 7907), (47, 7940), (48, 7946), (56, 8018), (60, 8066), (62, 8075),

Gene: Tiff81_12 Start: 7828, Stop: 8256, Start Num: 14

Candidate Starts for Tiff81_12:

(Start: 14 @7828 has 27 MA's), (16, 7849), (20, 7879), (21, 7882), (28, 7945), (44, 8077), (48, 8116), (56, 8188), (60, 8236), (62, 8245),

Gene: Vopal_12 Start: 7720, Stop: 8118, Start Num: 14

Candidate Starts for Vopal_12:

(Start: 14 @7720 has 27 MA's), (15, 7738), (20, 7771), (21, 7774), (44, 7939), (48, 7978), (51, 7996), (56, 8050), (60, 8098), (62, 8107),

Gene: Windest_12 Start: 7705, Stop: 8103, Start Num: 14

Candidate Starts for Windest_12:

(Start: 14 @7705 has 27 MA's), (15, 7723), (20, 7756), (21, 7759), (24, 7795), (44, 7924), (48, 7963), (51, 7981), (56, 8035), (60, 8083), (62, 8092),

Gene: YoungHarleezy_11 Start: 7661, Stop: 8059, Start Num: 14

Candidate Starts for YoungHarleezy_11:

(Start: 14 @7661 has 27 MA's), (15, 7679), (20, 7712), (21, 7715), (44, 7880), (48, 7919), (51, 7937), (56, 7991), (60, 8039), (62, 8048),