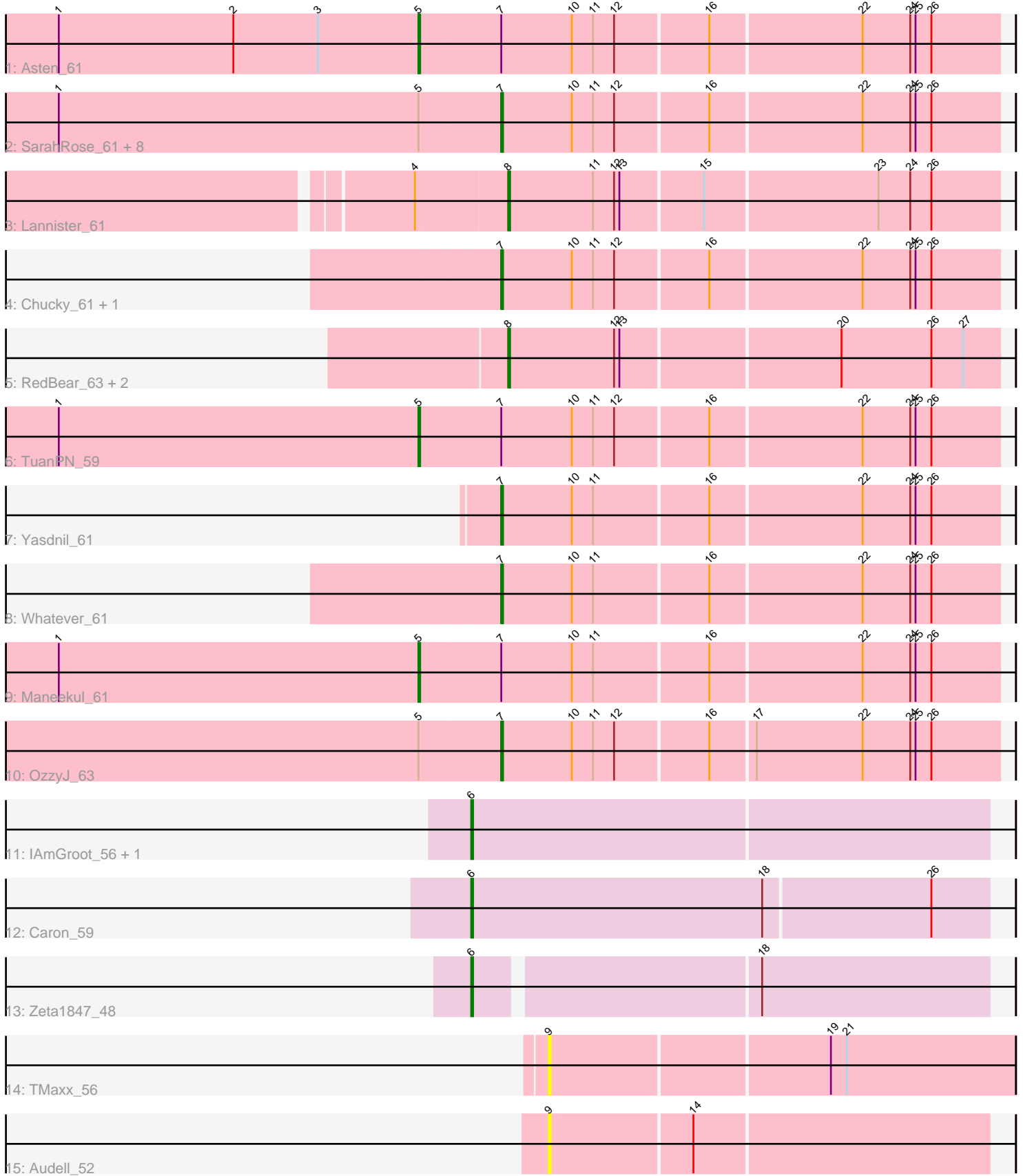


Pham 198306



Note: Tracks are now grouped by subcluster and scaled. Switching in subcluster is indicated by changes in track color. Track scale is now set by default to display the region 30 bp upstream of start 1 to 30 bp downstream of the last possible start. If this default region is judged to be packed too tightly with annotated starts, the track will be further scaled to only show that region of the ORF with annotated starts. This action will be indicated by adding "Zoomed" to the title. For starts, yellow indicates the location of called starts comprised solely of Glimmer/GeneMark auto-annotations, green indicates the location of called starts with at least 1 manual gene annotation.

Pham 198306 Report

This analysis was run 01/18/25 on database version 583.

Pham number 198306 has 27 members, 2 are drafts.

Phages represented in each track:

- Track 1 : Asten_61
- Track 2 : SarahRose_61, Emaanora_64, Ejemplo_59, Hippo_61, Triste_62, TagePhighter_63, Werner_61, Snorlax_61, BarryBee_64
- Track 3 : Lannister_61
- Track 4 : Chucky_61, Dwayne_61
- Track 5 : RedBear_63, South40_62, Katalie_62
- Track 6 : TuanPN_59
- Track 7 : Yasdnil_61
- Track 8 : Whatever_61
- Track 9 : Maneekul_61
- Track 10 : OzzyJ_63
- Track 11 : IAmGroot_56, GardenState_57
- Track 12 : Caron_59
- Track 13 : Zeta1847_48
- Track 14 : TMaxx_56
- Track 15 : Audell_52

Summary of Final Annotations (See graph section above for start numbers):

The start number called the most often in the published annotations is 7, it was called in 14 of the 25 non-draft genes in the pham.

Genes that call this "Most Annotated" start:

- BarryBee_64, Chucky_61, Dwayne_61, Ejemplo_59, Emaanora_64, Hippo_61, OzzyJ_63, SarahRose_61, Snorlax_61, TagePhighter_63, Triste_62, Werner_61, Whatever_61, Yasdnil_61,

Genes that have the "Most Annotated" start but do not call it:

- Asten_61, Maneekul_61, TuanPN_59,

Genes that do not have the "Most Annotated" start:

- Audell_52, Caron_59, GardenState_57, IAmGroot_56, Katalie_62, Lannister_61, RedBear_63, South40_62, TMaxx_56, Zeta1847_48,

Summary by start number:

Start 5:

- Found in 13 of 27 (48.1%) of genes in pham
- Manual Annotations of this start: 3 of 25
- Called 23.1% of time when present
- Phage (with cluster) where this start called: Asten_61 (BD1), Maneekul_61 (BD1), TuanPN_59 (BD1),

Start 6:

- Found in 4 of 27 (14.8%) of genes in pham
- Manual Annotations of this start: 4 of 25
- Called 100.0% of time when present
- Phage (with cluster) where this start called: Caron_59 (EH), GardenState_57 (EH), IAmGroot_56 (EH), Zeta1847_48 (EH),

Start 7:

- Found in 17 of 27 (63.0%) of genes in pham
- Manual Annotations of this start: 14 of 25
- Called 82.4% of time when present
- Phage (with cluster) where this start called: BarryBee_64 (BD1), Chucky_61 (BD1), Dwayne_61 (BD1), Ejemplo_59 (BD1), Emaanora_64 (BD1), Hippo_61 (BD1), OzzyJ_63 (BD1), SarahRose_61 (BD1), Snorlax_61 (BD1), TagePhighter_63 (BD1), Triste_62 (BD1), Werner_61 (BD1), Whatever_61 (BD1), Yasdnil_61 (BD1),

Start 8:

- Found in 4 of 27 (14.8%) of genes in pham
- Manual Annotations of this start: 4 of 25
- Called 100.0% of time when present
- Phage (with cluster) where this start called: Katalie_62 (BD1), Lannister_61 (BD1), RedBear_63 (BD1), South40_62 (BD1),

Start 9:

- Found in 2 of 27 (7.4%) of genes in pham
- No Manual Annotations of this start.
- Called 100.0% of time when present
- Phage (with cluster) where this start called: Audell_52 (FR), TMaxx_56 (FR),

Summary by clusters:

There are 3 clusters represented in this pham: FR, BD1, EH,

Info for manual annotations of cluster BD1:

- Start number 5 was manually annotated 3 times for cluster BD1.
- Start number 7 was manually annotated 14 times for cluster BD1.
- Start number 8 was manually annotated 4 times for cluster BD1.

Info for manual annotations of cluster EH:

- Start number 6 was manually annotated 4 times for cluster EH.

Gene Information:

Gene: Asten_61 Start: 45247, Stop: 44927, Start Num: 5

Candidate Starts for Asten_61:

(1, 45451), (2, 45352), (3, 45304), (Start: 5 @45247 has 3 MA's), (Start: 7 @45202 has 14 MA's), (10, 45163), (11, 45151), (12, 45139), (16, 45088), (22, 45004), (24, 44977), (25, 44974), (26, 44965),

Gene: Audell_52 Start: 35396, Stop: 35154, Start Num: 9

Candidate Starts for Audell_52:

(9, 35396), (14, 35318),

Gene: BarryBee_64 Start: 45179, Stop: 44904, Start Num: 7

Candidate Starts for BarryBee_64:

(1, 45428), (Start: 5 @45224 has 3 MA's), (Start: 7 @45179 has 14 MA's), (10, 45140), (11, 45128), (12, 45116), (16, 45065), (22, 44981), (24, 44954), (25, 44951), (26, 44942),

Gene: Caron_59 Start: 37630, Stop: 37920, Start Num: 6

Candidate Starts for Caron_59:

(Start: 6 @37630 has 4 MA's), (18, 37795), (26, 37888),

Gene: Chucky_61 Start: 45241, Stop: 44966, Start Num: 7

Candidate Starts for Chucky_61:

(Start: 7 @45241 has 14 MA's), (10, 45202), (11, 45190), (12, 45178), (16, 45127), (22, 45043), (24, 45016), (25, 45013), (26, 45004),

Gene: Dwayne_61 Start: 45229, Stop: 44954, Start Num: 7

Candidate Starts for Dwayne_61:

(Start: 7 @45229 has 14 MA's), (10, 45190), (11, 45178), (12, 45166), (16, 45115), (22, 45031), (24, 45004), (25, 45001), (26, 44992),

Gene: Ejemplo_59 Start: 45167, Stop: 44892, Start Num: 7

Candidate Starts for Ejemplo_59:

(1, 45416), (Start: 5 @45212 has 3 MA's), (Start: 7 @45167 has 14 MA's), (10, 45128), (11, 45116), (12, 45104), (16, 45053), (22, 44969), (24, 44942), (25, 44939), (26, 44930),

Gene: Emaanora_64 Start: 45152, Stop: 44877, Start Num: 7

Candidate Starts for Emaanora_64:

(1, 45401), (Start: 5 @45197 has 3 MA's), (Start: 7 @45152 has 14 MA's), (10, 45113), (11, 45101), (12, 45089), (16, 45038), (22, 44954), (24, 44927), (25, 44924), (26, 44915),

Gene: GardenState_57 Start: 37047, Stop: 37337, Start Num: 6

Candidate Starts for GardenState_57:

(Start: 6 @37047 has 4 MA's),

Gene: Hippo_61 Start: 45215, Stop: 44940, Start Num: 7

Candidate Starts for Hippo_61:

(1, 45464), (Start: 5 @45260 has 3 MA's), (Start: 7 @45215 has 14 MA's), (10, 45176), (11, 45164), (12, 45152), (16, 45101), (22, 45017), (24, 44990), (25, 44987), (26, 44978),

Gene: IAmGroot_56 Start: 37255, Stop: 37545, Start Num: 6

Candidate Starts for IAmGroot_56:

(Start: 6 @37255 has 4 MA's),

Gene: Katalie_62 Start: 45720, Stop: 45448, Start Num: 8

Candidate Starts for Katalie_62:

(Start: 8 @45720 has 4 MA's), (12, 45660), (13, 45657), (20, 45537), (26, 45486), (27, 45468),

Gene: Lannister_61 Start: 44098, Stop: 43826, Start Num: 8

Candidate Starts for Lannister_61:

(4, 44149), (Start: 8 @44098 has 4 MA's), (11, 44050), (12, 44038), (13, 44035), (15, 43990), (23, 43894), (24, 43876), (26, 43864),

Gene: Maneekul_61 Start: 45290, Stop: 44970, Start Num: 5

Candidate Starts for Maneekul_61:

(1, 45494), (Start: 5 @45290 has 3 MA's), (Start: 7 @45245 has 14 MA's), (10, 45206), (11, 45194), (16, 45131), (22, 45047), (24, 45020), (25, 45017), (26, 45008),

Gene: OzzyJ_63 Start: 45142, Stop: 44867, Start Num: 7

Candidate Starts for OzzyJ_63:

(Start: 5 @45187 has 3 MA's), (Start: 7 @45142 has 14 MA's), (10, 45103), (11, 45091), (12, 45079), (16, 45028), (17, 45004), (22, 44944), (24, 44917), (25, 44914), (26, 44905),

Gene: RedBear_63 Start: 45720, Stop: 45448, Start Num: 8

Candidate Starts for RedBear_63:

(Start: 8 @45720 has 4 MA's), (12, 45660), (13, 45657), (20, 45537), (26, 45486), (27, 45468),

Gene: SarahRose_61 Start: 45214, Stop: 44939, Start Num: 7

Candidate Starts for SarahRose_61:

(1, 45463), (Start: 5 @45259 has 3 MA's), (Start: 7 @45214 has 14 MA's), (10, 45175), (11, 45163), (12, 45151), (16, 45100), (22, 45016), (24, 44989), (25, 44986), (26, 44977),

Gene: Snorlax_61 Start: 45239, Stop: 44964, Start Num: 7

Candidate Starts for Snorlax_61:

(1, 45488), (Start: 5 @45284 has 3 MA's), (Start: 7 @45239 has 14 MA's), (10, 45200), (11, 45188), (12, 45176), (16, 45125), (22, 45041), (24, 45014), (25, 45011), (26, 45002),

Gene: South40_62 Start: 45720, Stop: 45448, Start Num: 8

Candidate Starts for South40_62:

(Start: 8 @45720 has 4 MA's), (12, 45660), (13, 45657), (20, 45537), (26, 45486), (27, 45468),

Gene: TMaxx_56 Start: 33780, Stop: 33523, Start Num: 9

Candidate Starts for TMaxx_56:

(9, 33780), (19, 33627), (21, 33618),

Gene: TagePhighter_63 Start: 45215, Stop: 44940, Start Num: 7

Candidate Starts for TagePhighter_63:

(1, 45464), (Start: 5 @45260 has 3 MA's), (Start: 7 @45215 has 14 MA's), (10, 45176), (11, 45164), (12, 45152), (16, 45101), (22, 45017), (24, 44990), (25, 44987), (26, 44978),

Gene: Triste_62 Start: 45214, Stop: 44939, Start Num: 7

Candidate Starts for Triste_62:

(1, 45463), (Start: 5 @45259 has 3 MA's), (Start: 7 @45214 has 14 MA's), (10, 45175), (11, 45163), (12, 45151), (16, 45100), (22, 45016), (24, 44989), (25, 44986), (26, 44977),

Gene: TuanPN_59 Start: 45212, Stop: 44892, Start Num: 5

Candidate Starts for TuanPN_59:

(1, 45416), (Start: 5 @45212 has 3 MA's), (Start: 7 @45167 has 14 MA's), (10, 45128), (11, 45116), (12, 45104), (16, 45053), (22, 44969), (24, 44942), (25, 44939), (26, 44930),

Gene: Werner_61 Start: 45212, Stop: 44937, Start Num: 7

Candidate Starts for Werner_61:

(1, 45461), (Start: 5 @45257 has 3 MA's), (Start: 7 @45212 has 14 MA's), (10, 45173), (11, 45161), (12, 45149), (16, 45098), (22, 45014), (24, 44987), (25, 44984), (26, 44975),

Gene: Whatever_61 Start: 45238, Stop: 44963, Start Num: 7

Candidate Starts for Whatever_61:

(Start: 7 @45238 has 14 MA's), (10, 45199), (11, 45187), (16, 45124), (22, 45040), (24, 45013), (25, 45010), (26, 45001),

Gene: Yasdnii_61 Start: 45264, Stop: 44989, Start Num: 7

Candidate Starts for Yasdnii_61:

(Start: 7 @45264 has 14 MA's), (10, 45225), (11, 45213), (16, 45150), (22, 45066), (24, 45039), (25, 45036), (26, 45027),

Gene: Zeta1847_48 Start: 35026, Stop: 35307, Start Num: 6

Candidate Starts for Zeta1847_48:

(Start: 6 @35026 has 4 MA's), (18, 35179),