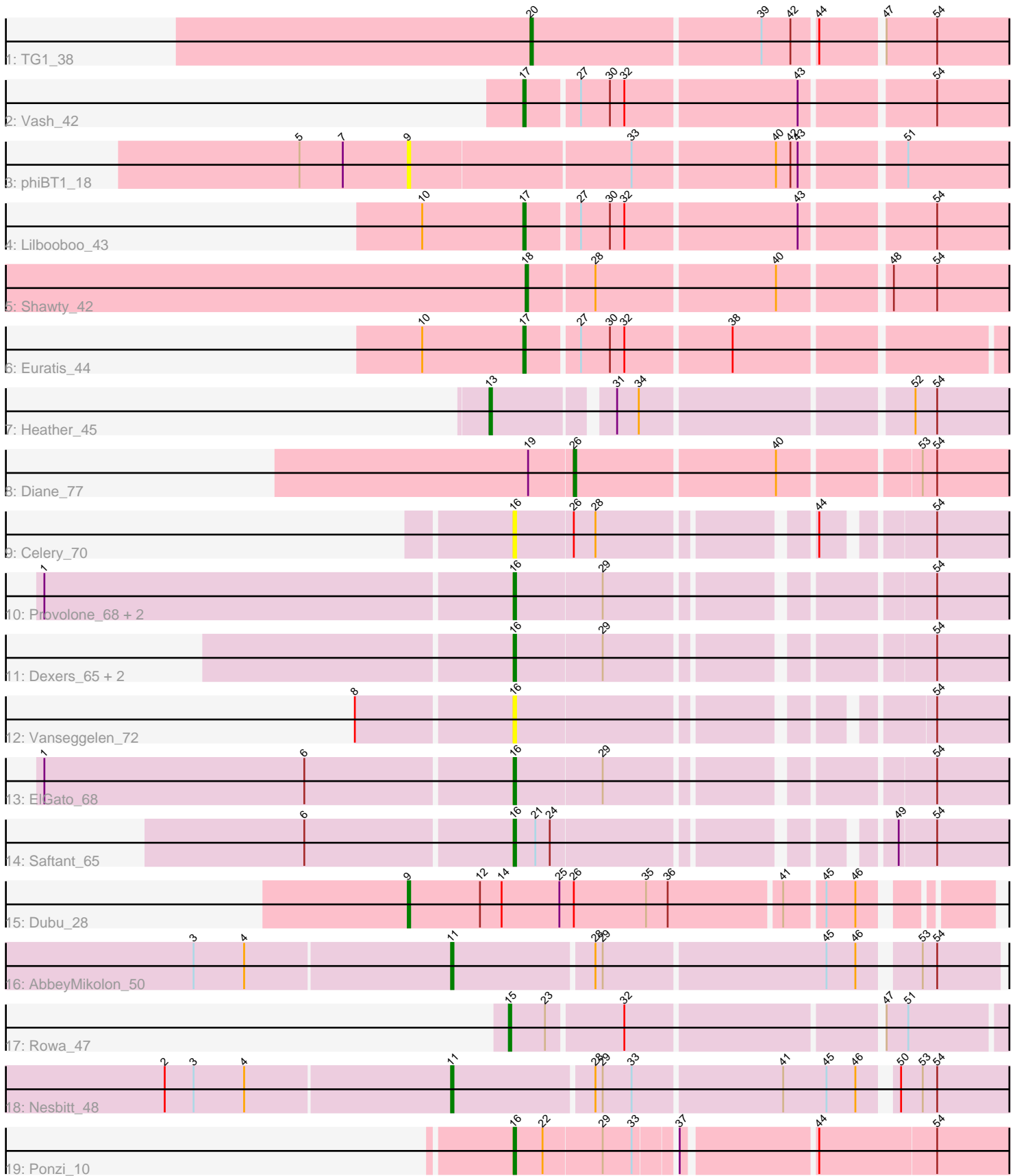


Pham 198348



Note: Tracks are now grouped by subcluster and scaled. Switching in subcluster is indicated by changes in track color. Track scale is now set by default to display the region 30 bp upstream of start 1 to 30 bp downstream of the last possible start. If this default region is judged to be packed too tightly with annotated starts, the track will be further scaled to only show that region of the ORF with annotated starts. This action will be indicated by adding "Zoomed" to the title. For starts, yellow indicates the location of called starts comprised solely of Glimmer/GeneMark auto-annotations, green indicates the location of called starts with at least 1 manual gene annotation.

## Pham 198348 Report

This analysis was run 01/18/25 on database version 583.

WARNING: Pham size does not match number of genes in report. Either unphamerated genes have been added (by you) or starterator has removed genes due to invalid start codon.

Pham number 198348 has 23 members, 3 are drafts.

Phages represented in each track:

- Track 1 : TG1\_38
- Track 2 : Vash\_42
- Track 3 : phiBT1\_18
- Track 4 : Lilbooboo\_43
- Track 5 : Shawty\_42
- Track 6 : Euratis\_44
- Track 7 : Heather\_45
- Track 8 : Diane\_77
- Track 9 : Celery\_70
- Track 10 : Provolone\_68, Alsaber\_67, Kaine\_67
- Track 11 : Dexers\_65, Conan\_68, Pavo\_68
- Track 12 : Vanseggelen\_72
- Track 13 : ElGato\_68
- Track 14 : Saftant\_65
- Track 15 : Dubu\_28
- Track 16 : AbbeyMikolon\_50
- Track 17 : Rowa\_47
- Track 18 : Nesbitt\_48
- Track 19 : Ponzi\_10

### ***Summary of Final Annotations (See graph section above for start numbers):***

The start number called the most often in the published annotations is 16, it was called in 9 of the 20 non-draft genes in the pham.

Genes that call this "Most Annotated" start:

- Alsaber\_67, Celery\_70, Conan\_68, Dexers\_65, ElGato\_68, Kaine\_67, Pavo\_68, Ponzi\_10, Provolone\_68, Saftant\_65, Vanseggelen\_72,

Genes that have the "Most Annotated" start but do not call it:

- 

Genes that do not have the "Most Annotated" start:

- AbbeyMikolon\_50, Diane\_77, Dubu\_28, Euratis\_44, Heather\_45, Lilbooboo\_43, Nesbitt\_48, Rowa\_47, Shawty\_42, TG1\_38, Vash\_42, phiBT1\_18,

### Summary by start number:

Start 9:

- Found in 2 of 23 ( 8.7% ) of genes in pham
- Manual Annotations of this start: 1 of 20
- Called 100.0% of time when present
- Phage (with cluster) where this start called: Dubu\_28 (BJ), phiBT1\_18 (BB1),

Start 11:

- Found in 2 of 23 ( 8.7% ) of genes in pham
- Manual Annotations of this start: 2 of 20
- Called 100.0% of time when present
- Phage (with cluster) where this start called: AbbeyMikolon\_50 (BL), Nesbitt\_48 (BL),

Start 13:

- Found in 1 of 23 ( 4.3% ) of genes in pham
- Manual Annotations of this start: 1 of 20
- Called 100.0% of time when present
- Phage (with cluster) where this start called: Heather\_45 (BB2),

Start 15:

- Found in 1 of 23 ( 4.3% ) of genes in pham
- Manual Annotations of this start: 1 of 20
- Called 100.0% of time when present
- Phage (with cluster) where this start called: Rowa\_47 (BL),

Start 16:

- Found in 11 of 23 ( 47.8% ) of genes in pham
- Manual Annotations of this start: 9 of 20
- Called 100.0% of time when present
- Phage (with cluster) where this start called: Alsaber\_67 (BD3), Celery\_70 (BD3), Conan\_68 (BD3), Dexers\_65 (BD3), ElGato\_68 (BD3), Kaine\_67 (BD3), Pavo\_68 (BD3), Ponzi\_10 (singleton), Provolone\_68 (BD3), Saftant\_65 (BD3), Vanseggelen\_72 (BD3),

Start 17:

- Found in 3 of 23 ( 13.0% ) of genes in pham
- Manual Annotations of this start: 3 of 20
- Called 100.0% of time when present
- Phage (with cluster) where this start called: Euratis\_44 (BB1), Lilbooboo\_43 (BB1), Vash\_42 (BB1),

Start 18:

- Found in 1 of 23 ( 4.3% ) of genes in pham
- Manual Annotations of this start: 1 of 20
- Called 100.0% of time when present
- Phage (with cluster) where this start called: Shawty\_42 (BB1),

Start 20:

- Found in 1 of 23 ( 4.3% ) of genes in pham
- Manual Annotations of this start: 1 of 20
- Called 100.0% of time when present
- Phage (with cluster) where this start called: TG1\_38 (BB1),

Start 26:

- Found in 3 of 23 ( 13.0% ) of genes in pham
- Manual Annotations of this start: 1 of 20
- Called 33.3% of time when present
- Phage (with cluster) where this start called: Diane\_77 (BD2),

**Summary by clusters:**

There are 7 clusters represented in this pham: singleton, BL, BJ, BD3, BD2, BB2, BB1,

Info for manual annotations of cluster BB1:

- Start number 17 was manually annotated 3 times for cluster BB1.
- Start number 18 was manually annotated 1 time for cluster BB1.
- Start number 20 was manually annotated 1 time for cluster BB1.

Info for manual annotations of cluster BB2:

- Start number 13 was manually annotated 1 time for cluster BB2.

Info for manual annotations of cluster BD2:

- Start number 26 was manually annotated 1 time for cluster BD2.

Info for manual annotations of cluster BD3:

- Start number 16 was manually annotated 8 times for cluster BD3.

Info for manual annotations of cluster BJ:

- Start number 9 was manually annotated 1 time for cluster BJ.

Info for manual annotations of cluster BL:

- Start number 11 was manually annotated 2 times for cluster BL.
- Start number 15 was manually annotated 1 time for cluster BL.

**Gene Information:**

Gene: AbbeyMikolon\_50 Start: 34818, Stop: 35045, Start Num: 11

Candidate Starts for AbbeyMikolon\_50:

(3, 34713), (4, 34734), (Start: 11 @34818 has 2 MA's), (28, 34875), (29, 34878), (45, 34968), (46, 34980), (53, 35001), (54, 35007),

Gene: Alsaber\_67 Start: 43932, Stop: 43747, Start Num: 16

Candidate Starts for Alsaber\_67:

(1, 44124), (Start: 16 @43932 has 9 MA's), (29, 43896), (54, 43776),

Gene: Celery\_70 Start: 43835, Stop: 43656, Start Num: 16

Candidate Starts for Celery\_70:

(Start: 16 @43835 has 9 MA's), (Start: 26 @43811 has 1 MA's), (28, 43802), (44, 43724), (54, 43685),

Gene: Conan\_68 Start: 44184, Stop: 43999, Start Num: 16

Candidate Starts for Conan\_68:

(Start: 16 @44184 has 9 MA's), (29, 44148), (54, 44028),

Gene: Dexers\_65 Start: 44158, Stop: 43973, Start Num: 16

Candidate Starts for Dexers\_65:

(Start: 16 @44158 has 9 MA's), (29, 44122), (54, 44002),

Gene: Diane\_77 Start: 48864, Stop: 48694, Start Num: 26

Candidate Starts for Diane\_77:

(19, 48882), (Start: 26 @48864 has 1 MA's), (40, 48783), (53, 48729), (54, 48723),

Gene: Dubu\_28 Start: 22494, Stop: 22727, Start Num: 9

Candidate Starts for Dubu\_28:

(Start: 9 @22494 has 1 MA's), (12, 22524), (14, 22533), (25, 22557), (Start: 26 @22563 has 1 MA's), (35, 22593), (36, 22602), (41, 22647), (45, 22662), (46, 22674),

Gene: ElGato\_68 Start: 44061, Stop: 43876, Start Num: 16

Candidate Starts for ElGato\_68:

(1, 44253), (6, 44145), (Start: 16 @44061 has 9 MA's), (29, 44025), (54, 43905),

Gene: Euratis\_44 Start: 32135, Stop: 32332, Start Num: 17

Candidate Starts for Euratis\_44:

(10, 32093), (Start: 17 @32135 has 3 MA's), (27, 32156), (30, 32168), (32, 32174), (38, 32216),

Gene: Heather\_45 Start: 33301, Stop: 33516, Start Num: 13

Candidate Starts for Heather\_45:

(Start: 13 @33301 has 1 MA's), (31, 33346), (34, 33355), (52, 33460), (54, 33469),

Gene: Kaine\_67 Start: 43956, Stop: 43771, Start Num: 16

Candidate Starts for Kaine\_67:

(1, 44148), (Start: 16 @43956 has 9 MA's), (29, 43920), (54, 43800),

Gene: Lilbooboo\_43 Start: 32803, Stop: 33003, Start Num: 17

Candidate Starts for Lilbooboo\_43:

(10, 32761), (Start: 17 @32803 has 3 MA's), (27, 32824), (30, 32836), (32, 32842), (43, 32911), (54, 32962),

Gene: Nesbitt\_48 Start: 34701, Stop: 34934, Start Num: 11

Candidate Starts for Nesbitt\_48:

(2, 34584), (3, 34596), (4, 34617), (Start: 11 @34701 has 2 MA's), (28, 34758), (29, 34761), (33, 34773), (41, 34833), (45, 34851), (46, 34863), (50, 34875), (53, 34884), (54, 34890),

Gene: Pavo\_68 Start: 44132, Stop: 43947, Start Num: 16

Candidate Starts for Pavo\_68:

(Start: 16 @44132 has 9 MA's), (29, 44096), (54, 43976),

Gene: Ponzi\_10 Start: 7385, Stop: 7191, Start Num: 16

Candidate Starts for Ponzi\_10:

(Start: 16 @7385 has 9 MA's), (22, 7373), (29, 7349), (33, 7337), (37, 7322), (44, 7271), (54, 7223),

Gene: Provolone\_68 Start: 44273, Stop: 44088, Start Num: 16  
Candidate Starts for Provolone\_68:  
(1, 44465), (Start: 16 @44273 has 9 MA's), (29, 44237), (54, 44117),

Gene: Rowa\_47 Start: 34523, Stop: 34726, Start Num: 15  
Candidate Starts for Rowa\_47:  
(Start: 15 @34523 has 1 MA's), (23, 34538), (32, 34568), (47, 34667), (51, 34676),

Gene: Saftant\_65 Start: 44014, Stop: 43835, Start Num: 16  
Candidate Starts for Saftant\_65:  
(6, 44098), (Start: 16 @44014 has 9 MA's), (21, 44005), (24, 43999), (49, 43879), (54, 43864),

Gene: Shawty\_42 Start: 32427, Stop: 32624, Start Num: 18  
Candidate Starts for Shawty\_42:  
(Start: 18 @32427 has 1 MA's), (28, 32454), (40, 32526), (48, 32568), (54, 32586),

Gene: TG1\_38 Start: 31372, Stop: 31563, Start Num: 20  
Candidate Starts for TG1\_38:  
(Start: 20 @31372 has 1 MA's), (39, 31465), (42, 31477), (44, 31486), (47, 31510), (54, 31531),

Gene: Vanseggelen\_72 Start: 43995, Stop: 43816, Start Num: 16  
Candidate Starts for Vanseggelen\_72:  
(8, 44058), (Start: 16 @43995 has 9 MA's), (54, 43845),

Gene: Vash\_42 Start: 32602, Stop: 32802, Start Num: 17  
Candidate Starts for Vash\_42:  
(Start: 17 @32602 has 3 MA's), (27, 32623), (30, 32635), (32, 32641), (43, 32710), (54, 32761),

Gene: phiBT1\_18 Start: 33362, Stop: 33613, Start Num: 9  
Candidate Starts for phiBT1\_18:  
(5, 33317), (7, 33335), (Start: 9 @33362 has 1 MA's), (33, 33452), (40, 33509), (42, 33515), (43, 33518), (51, 33557),