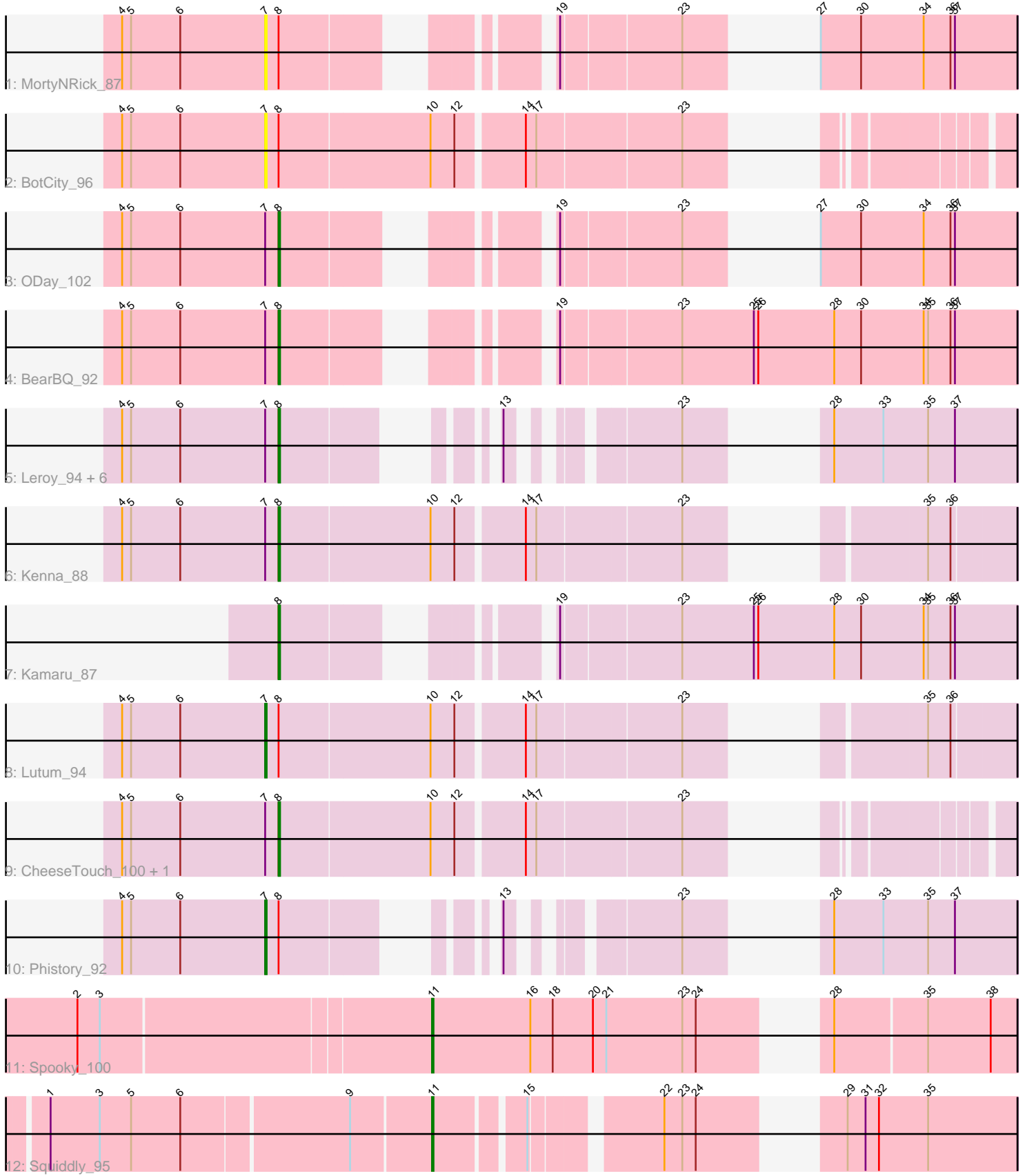


Pham 198437



Note: Tracks are now grouped by subcluster and scaled. Switching in subcluster is indicated by changes in track color. Track scale is now set by default to display the region 30 bp upstream of start 1 to 30 bp downstream of the last possible start. If this default region is judged to be packed too tightly with annotated starts, the track will be further scaled to only show that region of the ORF with annotated starts. This action will be indicated by adding "Zoomed" to the title. For starts, yellow indicates the location of called starts comprised solely of Glimmer/GeneMark auto-annotations, green indicates the location of called starts with at least 1 manual gene annotation.

Pham 198437 Report

This analysis was run 01/18/25 on database version 583.

Pham number 198437 has 19 members, 3 are drafts.

Phages represented in each track:

- Track 1 : MortyNRick_87
- Track 2 : BotCity_96
- Track 3 : ODay_102
- Track 4 : BearBQ_92
- Track 5 : Leroy_94, Horus_94, Frickyeah_100, Ecliptus_101, Periwinkle_102, Apricot_93, Crater_93
- Track 6 : Kenna_88
- Track 7 : Kamaru_87
- Track 8 : Lutum_94
- Track 9 : CheeseTouch_100, BENtherdunthat_93
- Track 10 : Phistory_92
- Track 11 : Spooky_100
- Track 12 : Squiddly_95

Summary of Final Annotations (See graph section above for start numbers):

The start number called the most often in the published annotations is 8, it was called in 12 of the 16 non-draft genes in the pham.

Genes that call this "Most Annotated" start:

- Apricot_93, BENtherdunthat_93, BearBQ_92, CheeseTouch_100, Crater_93, Ecliptus_101, Frickyeah_100, Horus_94, Kamaru_87, Kenna_88, Leroy_94, ODay_102, Periwinkle_102,

Genes that have the "Most Annotated" start but do not call it:

- BotCity_96, Lutum_94, MortyNRick_87, Phistory_92,

Genes that do not have the "Most Annotated" start:

- Spooky_100, Squiddly_95,

Summary by start number:

Start 7:

- Found in 16 of 19 (84.2%) of genes in pham

- Manual Annotations of this start: 2 of 16
- Called 25.0% of time when present
- Phage (with cluster) where this start called: BotCity_96 (DN), Lutum_94 (DN1), MortyNRick_87 (DN), Phistory_92 (DN1),

Start 8:

- Found in 17 of 19 (89.5%) of genes in pham
- Manual Annotations of this start: 12 of 16
- Called 76.5% of time when present
- Phage (with cluster) where this start called: Apricot_93 (DN3), BENtherdunthat_93 (DN1), BearBQ_92 (DN), CheeseTouch_100 (DN1), Crater_93 (DN3), Ecliptus_101 (DN), Frickyeah_100 (DN1), Horus_94 (DN1), Kamaru_87 (DN1), Kenna_88 (DN1), Leroy_94 (DN1), ODay_102 (DN), Periwinkle_102 (DN1),

Start 11:

- Found in 2 of 19 (10.5%) of genes in pham
- Manual Annotations of this start: 2 of 16
- Called 100.0% of time when present
- Phage (with cluster) where this start called: Spooky_100 (DN2), Squiddly_95 (DN2),

Summary by clusters:

There are 4 clusters represented in this pham: DN, DN1, DN3, DN2,

Info for manual annotations of cluster DN:

- Start number 8 was manually annotated 3 times for cluster DN.

Info for manual annotations of cluster DN1:

- Start number 7 was manually annotated 2 times for cluster DN1.
- Start number 8 was manually annotated 7 times for cluster DN1.

Info for manual annotations of cluster DN2:

- Start number 11 was manually annotated 2 times for cluster DN2.

Info for manual annotations of cluster DN3:

- Start number 8 was manually annotated 2 times for cluster DN3.

Gene Information:

Gene: Apricot_93 Start: 49480, Stop: 49815, Start Num: 8

Candidate Starts for Apricot_93:

(4, 49375), (5, 49381), (6, 49414), (Start: 7 @49471 has 2 MA's), (Start: 8 @49480 has 12 MA's), (13, 49570), (23, 49654), (28, 49693), (33, 49726), (35, 49756), (37, 49774),

Gene: BENtherdunthat_93 Start: 50252, Stop: 50641, Start Num: 8

Candidate Starts for BENtherdunthat_93:

(4, 50147), (5, 50153), (6, 50186), (Start: 7 @50243 has 2 MA's), (Start: 8 @50252 has 12 MA's), (10, 50351), (12, 50366), (14, 50408), (17, 50414), (23, 50507),

Gene: BearBQ_92 Start: 51497, Stop: 51925, Start Num: 8

Candidate Starts for BearBQ_92:

(4, 51392), (5, 51398), (6, 51431), (Start: 7 @51488 has 2 MA's), (Start: 8 @51497 has 12 MA's), (19, 51626), (23, 51701), (25, 51749), (26, 51752), (28, 51803), (30, 51821), (34, 51863), (35, 51866), (36, 51881), (37, 51884),

Gene: BotCity_96 Start: 51772, Stop: 52170, Start Num: 7

Candidate Starts for BotCity_96:

(4, 51676), (5, 51682), (6, 51715), (Start: 7 @51772 has 2 MA's), (Start: 8 @51781 has 12 MA's), (10, 51880), (12, 51895), (14, 51937), (17, 51943), (23, 52036),

Gene: CheeseTouch_100 Start: 49365, Stop: 49754, Start Num: 8

Candidate Starts for CheeseTouch_100:

(4, 49260), (5, 49266), (6, 49299), (Start: 7 @49356 has 2 MA's), (Start: 8 @49365 has 12 MA's), (10, 49464), (12, 49479), (14, 49521), (17, 49527), (23, 49620),

Gene: Crater_93 Start: 49824, Stop: 50159, Start Num: 8

Candidate Starts for Crater_93:

(4, 49719), (5, 49725), (6, 49758), (Start: 7 @49815 has 2 MA's), (Start: 8 @49824 has 12 MA's), (13, 49914), (23, 49998), (28, 50037), (33, 50070), (35, 50100), (37, 50118),

Gene: Ecliptus_101 Start: 53023, Stop: 53358, Start Num: 8

Candidate Starts for Ecliptus_101:

(4, 52918), (5, 52924), (6, 52957), (Start: 7 @53014 has 2 MA's), (Start: 8 @53023 has 12 MA's), (13, 53113), (23, 53197), (28, 53236), (33, 53269), (35, 53299), (37, 53317),

Gene: Frickyeah_100 Start: 51770, Stop: 52105, Start Num: 8

Candidate Starts for Frickyeah_100:

(4, 51665), (5, 51671), (6, 51704), (Start: 7 @51761 has 2 MA's), (Start: 8 @51770 has 12 MA's), (13, 51860), (23, 51944), (28, 51983), (33, 52016), (35, 52046), (37, 52064),

Gene: Horus_94 Start: 52045, Stop: 52380, Start Num: 8

Candidate Starts for Horus_94:

(4, 51940), (5, 51946), (6, 51979), (Start: 7 @52036 has 2 MA's), (Start: 8 @52045 has 12 MA's), (13, 52135), (23, 52219), (28, 52258), (33, 52291), (35, 52321), (37, 52339),

Gene: Kamaru_87 Start: 49076, Stop: 49504, Start Num: 8

Candidate Starts for Kamaru_87:

(Start: 8 @49076 has 12 MA's), (19, 49205), (23, 49280), (25, 49328), (26, 49331), (28, 49382), (30, 49400), (34, 49442), (35, 49445), (36, 49460), (37, 49463),

Gene: Kenna_88 Start: 49368, Stop: 49775, Start Num: 8

Candidate Starts for Kenna_88:

(4, 49263), (5, 49269), (6, 49302), (Start: 7 @49359 has 2 MA's), (Start: 8 @49368 has 12 MA's), (10, 49467), (12, 49482), (14, 49524), (17, 49530), (23, 49623), (35, 49719), (36, 49734),

Gene: Leroy_94 Start: 50240, Stop: 50575, Start Num: 8

Candidate Starts for Leroy_94:

(4, 50135), (5, 50141), (6, 50174), (Start: 7 @50231 has 2 MA's), (Start: 8 @50240 has 12 MA's), (13, 50330), (23, 50414), (28, 50453), (33, 50486), (35, 50516), (37, 50534),

Gene: Lutum_94 Start: 50678, Stop: 51094, Start Num: 7

Candidate Starts for Lutum_94:

(4, 50582), (5, 50588), (6, 50621), (Start: 7 @50678 has 2 MA's), (Start: 8 @50687 has 12 MA's), (10, 50786), (12, 50801), (14, 50843), (17, 50849), (23, 50942), (35, 51038), (36, 51053),

Gene: MortyNRick_87 Start: 50122, Stop: 50496, Start Num: 7

Candidate Starts for MortyNRick_87:

(4, 50026), (5, 50032), (6, 50065), (Start: 7 @50122 has 2 MA's), (Start: 8 @50131 has 12 MA's), (19, 50260), (23, 50335), (27, 50365), (30, 50392), (34, 50434), (36, 50452), (37, 50455),

Gene: ODay_102 Start: 53166, Stop: 53531, Start Num: 8

Candidate Starts for ODay_102:

(4, 53061), (5, 53067), (6, 53100), (Start: 7 @53157 has 2 MA's), (Start: 8 @53166 has 12 MA's), (19, 53295), (23, 53370), (27, 53400), (30, 53427), (34, 53469), (36, 53487), (37, 53490),

Gene: Periwinkle_102 Start: 53047, Stop: 53382, Start Num: 8

Candidate Starts for Periwinkle_102:

(4, 52942), (5, 52948), (6, 52981), (Start: 7 @53038 has 2 MA's), (Start: 8 @53047 has 12 MA's), (13, 53137), (23, 53221), (28, 53260), (33, 53293), (35, 53323), (37, 53341),

Gene: Phistory_92 Start: 49079, Stop: 49423, Start Num: 7

Candidate Starts for Phistory_92:

(4, 48983), (5, 48989), (6, 49022), (Start: 7 @49079 has 2 MA's), (Start: 8 @49088 has 12 MA's), (13, 49178), (23, 49262), (28, 49301), (33, 49334), (35, 49364), (37, 49382),

Gene: Spooky_100 Start: 53379, Stop: 53726, Start Num: 11

Candidate Starts for Spooky_100:

(2, 53151), (3, 53166), (Start: 11 @53379 has 2 MA's), (16, 53445), (18, 53460), (20, 53487), (21, 53496), (23, 53547), (24, 53556), (28, 53607), (35, 53667), (38, 53709),

Gene: Squiddly_95 Start: 54461, Stop: 54784, Start Num: 11

Candidate Starts for Squiddly_95:

(1, 54215), (3, 54248), (5, 54269), (6, 54302), (9, 54410), (Start: 11 @54461 has 2 MA's), (15, 54515), (22, 54590), (23, 54602), (24, 54611), (29, 54671), (31, 54683), (32, 54692), (35, 54725),