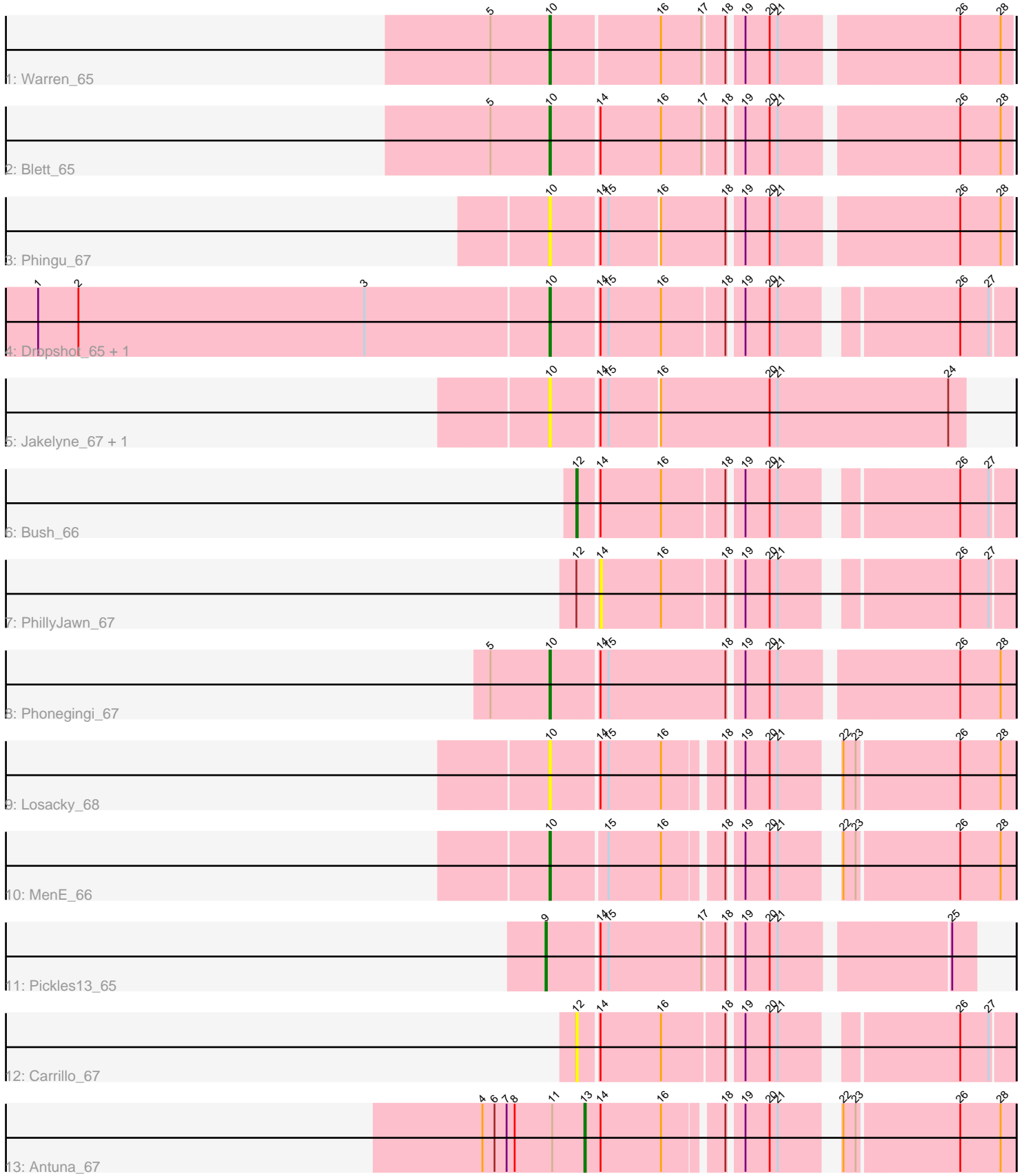


Pham 198510



Note: Tracks are now grouped by subcluster and scaled. Switching in subcluster is indicated by changes in track color. Track scale is now set by default to display the region 30 bp upstream of start 1 to 30 bp downstream of the last possible start. If this default region is judged to be packed too tightly with annotated starts, the track will be further scaled to only show that region of the ORF with annotated starts. This action will be indicated by adding "Zoomed" to the title. For starts, yellow indicates the location of called starts comprised solely of Glimmer/GeneMark auto-annotations, green indicates the location of called starts with at least 1 manual gene annotation.

Pham 198510 Report

This analysis was run 01/18/25 on database version 583.

Pham number 198510 has 15 members, 6 are drafts.

Phages represented in each track:

- Track 1 : Warren_65
- Track 2 : Blett_65
- Track 3 : Phingu_67
- Track 4 : Dropshot_65, Appa_65
- Track 5 : Jakelyne_67, Guzman_64
- Track 6 : Bush_66
- Track 7 : PhillyJawn_67
- Track 8 : Phonegingi_67
- Track 9 : Losacky_68
- Track 10 : MenE_66
- Track 11 : Pickles13_65
- Track 12 : Carrillo_67
- Track 13 : Antuna_67

Summary of Final Annotations (See graph section above for start numbers):

The start number called the most often in the published annotations is 10, it was called in 6 of the 9 non-draft genes in the pham.

Genes that call this "Most Annotated" start:

- Appa_65, Blett_65, Dropshot_65, Guzman_64, Jakelyne_67, Losacky_68, MenE_66, Phingu_67, Phonegingi_67, Warren_65,

Genes that have the "Most Annotated" start but do not call it:

-

Genes that do not have the "Most Annotated" start:

- Antuna_67, Bush_66, Carrillo_67, PhillyJawn_67, Pickles13_65,

Summary by start number:

Start 9:

- Found in 1 of 15 (6.7%) of genes in pham
- Manual Annotations of this start: 1 of 9

- Called 100.0% of time when present
- Phage (with cluster) where this start called: Pickles13_65 (GA),

Start 10:

- Found in 10 of 15 (66.7%) of genes in pham
- Manual Annotations of this start: 6 of 9
- Called 100.0% of time when present
- Phage (with cluster) where this start called: Appa_65 (GA), Blett_65 (GA), Dropshot_65 (GA), Guzman_64 (GA), Jakelyne_67 (GA), Losacky_68 (GA), MenE_66 (GA), Phingu_67 (GA), Phonegingi_67 (GA), Warren_65 (GA),

Start 12:

- Found in 3 of 15 (20.0%) of genes in pham
- Manual Annotations of this start: 1 of 9
- Called 66.7% of time when present
- Phage (with cluster) where this start called: Bush_66 (GA), Carrillo_67 (GA),

Start 13:

- Found in 1 of 15 (6.7%) of genes in pham
- Manual Annotations of this start: 1 of 9
- Called 100.0% of time when present
- Phage (with cluster) where this start called: Antuna_67 (GA),

Start 14:

- Found in 13 of 15 (86.7%) of genes in pham
- No Manual Annotations of this start.
- Called 7.7% of time when present
- Phage (with cluster) where this start called: PhillyJawn_67 (GA),

Summary by clusters:

There is one cluster represented in this pham: GA

Info for manual annotations of cluster GA:

- Start number 9 was manually annotated 1 time for cluster GA.
- Start number 10 was manually annotated 6 times for cluster GA.
- Start number 12 was manually annotated 1 time for cluster GA.
- Start number 13 was manually annotated 1 time for cluster GA.

Gene Information:

Gene: Antuna_67 Start: 38444, Stop: 38728, Start Num: 13

Candidate Starts for Antuna_67:

(4, 38369), (6, 38378), (7, 38387), (8, 38393), (11, 38420), (Start: 13 @38444 has 1 MA's), (14, 38456), (16, 38501), (18, 38540), (19, 38549), (20, 38567), (21, 38573), (22, 38606), (23, 38615), (26, 38687), (28, 38717),

Gene: Appa_65 Start: 38092, Stop: 38397, Start Num: 10

Candidate Starts for Appa_65:

(1, 37717), (2, 37747), (3, 37960), (Start: 10 @38092 has 6 MA's), (14, 38125), (15, 38131), (16, 38170), (18, 38215), (19, 38224), (20, 38242), (21, 38248), (26, 38362), (27, 38383),

Gene: Blett_65 Start: 38245, Stop: 38562, Start Num: 10

Candidate Starts for Blett_65:

(5, 38203), (Start: 10 @38245 has 6 MA's), (14, 38278), (16, 38323), (17, 38353), (18, 38368), (19, 38377), (20, 38395), (21, 38401), (26, 38524), (28, 38554),

Gene: Bush_66 Start: 38304, Stop: 38591, Start Num: 12

Candidate Starts for Bush_66:

(Start: 12 @38304 has 1 MA's), (14, 38316), (16, 38361), (18, 38406), (19, 38415), (20, 38433), (21, 38439), (26, 38553), (27, 38574),

Gene: Carrillo_67 Start: 38232, Stop: 38519, Start Num: 12

Candidate Starts for Carrillo_67:

(Start: 12 @38232 has 1 MA's), (14, 38244), (16, 38289), (18, 38334), (19, 38343), (20, 38361), (21, 38367), (26, 38481), (27, 38502),

Gene: Dropshot_65 Start: 37930, Stop: 38238, Start Num: 10

Candidate Starts for Dropshot_65:

(1, 37555), (2, 37585), (3, 37798), (Start: 10 @37930 has 6 MA's), (14, 37963), (15, 37969), (16, 38008), (18, 38053), (19, 38062), (20, 38080), (21, 38086), (26, 38200), (27, 38221),

Gene: Guzman_64 Start: 37777, Stop: 38076, Start Num: 10

Candidate Starts for Guzman_64:

(Start: 10 @37777 has 6 MA's), (14, 37810), (15, 37816), (16, 37852), (20, 37933), (21, 37939), (24, 38065),

Gene: Jakelyne_67 Start: 37929, Stop: 38228, Start Num: 10

Candidate Starts for Jakelyne_67:

(Start: 10 @37929 has 6 MA's), (14, 37962), (15, 37968), (16, 38004), (20, 38085), (21, 38091), (24, 38217),

Gene: Losacky_68 Start: 38097, Stop: 38402, Start Num: 10

Candidate Starts for Losacky_68:

(Start: 10 @38097 has 6 MA's), (14, 38130), (15, 38136), (16, 38175), (18, 38214), (19, 38223), (20, 38241), (21, 38247), (22, 38280), (23, 38289), (26, 38361), (28, 38391),

Gene: MenE_66 Start: 37970, Stop: 38275, Start Num: 10

Candidate Starts for MenE_66:

(Start: 10 @37970 has 6 MA's), (15, 38009), (16, 38048), (18, 38087), (19, 38096), (20, 38114), (21, 38120), (22, 38153), (23, 38162), (26, 38234), (28, 38264),

Gene: PhillyJawn_67 Start: 38188, Stop: 38463, Start Num: 14

Candidate Starts for PhillyJawn_67:

(Start: 12 @38176 has 1 MA's), (14, 38188), (16, 38233), (18, 38278), (19, 38287), (20, 38305), (21, 38311), (26, 38425), (27, 38446),

Gene: Phingu_67 Start: 37942, Stop: 38259, Start Num: 10

Candidate Starts for Phingu_67:

(Start: 10 @37942 has 6 MA's), (14, 37975), (15, 37981), (16, 38017), (18, 38065), (19, 38074), (20, 38092), (21, 38098), (26, 38221), (28, 38251),

Gene: Phonegingi_67 Start: 38811, Stop: 39134, Start Num: 10

Candidate Starts for Phonegingi_67:

(5, 38769), (Start: 10 @38811 has 6 MA's), (14, 38844), (15, 38850), (18, 38937), (19, 38946), (20, 38964), (21, 38970), (26, 39093), (28, 39123),

Gene: Pickles13_65 Start: 38714, Stop: 39004, Start Num: 9

Candidate Starts for Pickles13_65:

(Start: 9 @38714 has 1 MA's), (14, 38750), (15, 38756), (17, 38825), (18, 38840), (19, 38849), (20, 38867), (21, 38873), (25, 38987),

Gene: Warren_65 Start: 38108, Stop: 38425, Start Num: 10

Candidate Starts for Warren_65:

(5, 38066), (Start: 10 @38108 has 6 MA's), (16, 38186), (17, 38216), (18, 38231), (19, 38240), (20, 38258), (21, 38264), (26, 38387), (28, 38417),