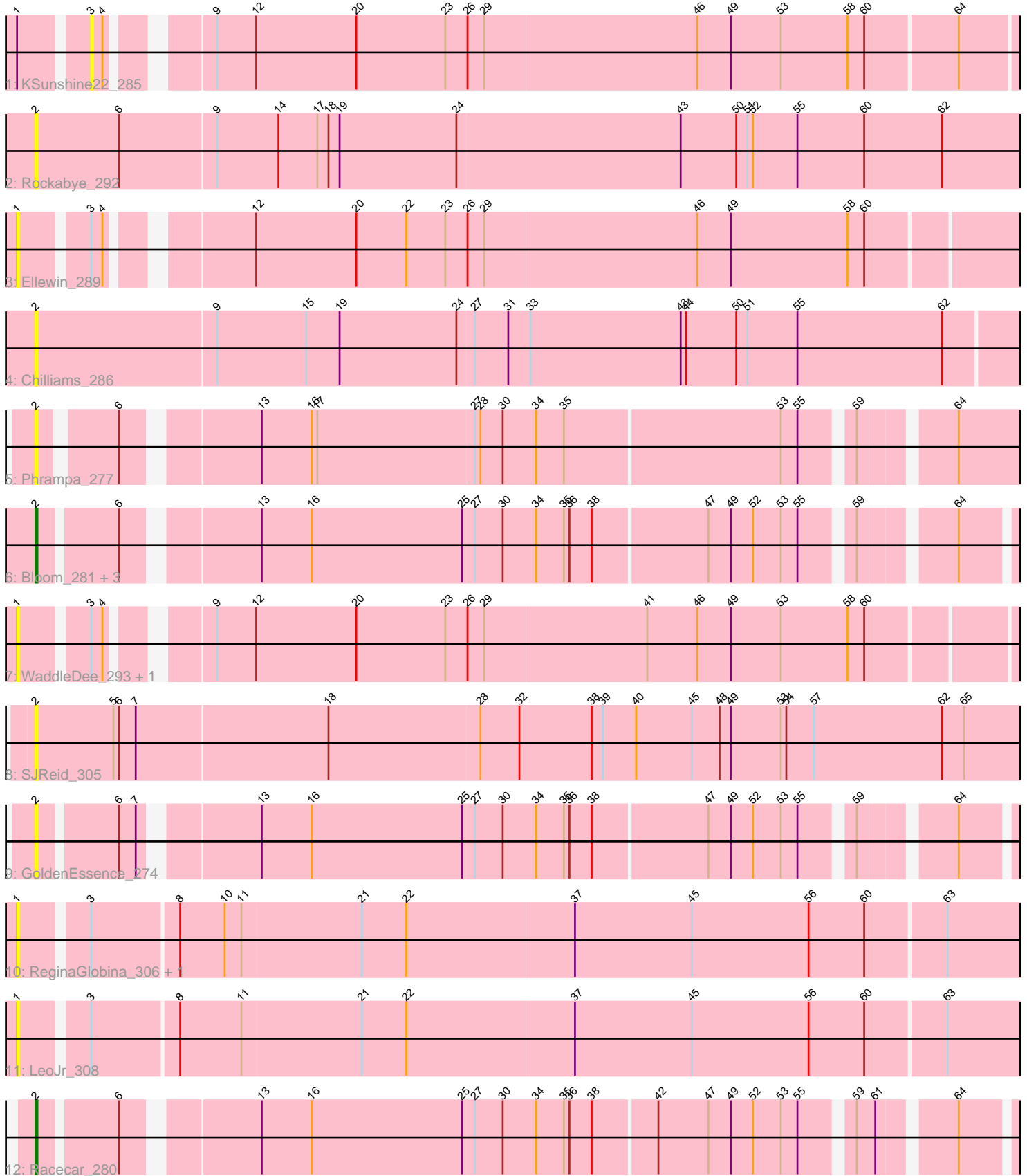


Pham 198532



Note: Tracks are now grouped by subcluster and scaled. Switching in subcluster is indicated by changes in track color. Track scale is now set by default to display the region 30 bp upstream of start 1 to 30 bp downstream of the last possible start. If this default region is judged to be packed too tightly with annotated starts, the track will be further scaled to only show that region of the ORF with annotated starts. This action will be indicated by adding "Zoomed" to the title. For starts, yellow indicates the location of called starts comprised solely of Glimmer/GeneMark auto-annotations, green indicates the location of called starts with at least 1 manual gene annotation.

## Pham 198532 Report

This analysis was run 01/18/25 on database version 583.

Pham number 198532 has 17 members, 15 are drafts.

Phages represented in each track:

- Track 1 : KSunshine22\_285
- Track 2 : Rockabye\_292
- Track 3 : Ellewin\_289
- Track 4 : Chilliams\_286
- Track 5 : Phrampa\_277
- Track 6 : Bloom\_281, Talia1610\_278, Mimi\_282, Patbob\_282
- Track 7 : WaddleDee\_293, DunneganBoMo\_294
- Track 8 : SJReid\_305
- Track 9 : GoldenEssence\_274
- Track 10 : ReginaGlobina\_306, Atuin\_301
- Track 11 : LeoJr\_308
- Track 12 : Racecar\_280

### ***Summary of Final Annotations (See graph section above for start numbers):***

The start number called the most often in the published annotations is 2, it was called in 2 of the 2 non-draft genes in the pham.

Genes that call this "Most Annotated" start:

- Bloom\_281, Chilliams\_286, GoldenEssence\_274, Mimi\_282, Patbob\_282, Phrampa\_277, Racecar\_280, Rockabye\_292, SJReid\_305, Talia1610\_278,

Genes that have the "Most Annotated" start but do not call it:

- 

Genes that do not have the "Most Annotated" start:

- Atuin\_301, DunneganBoMo\_294, Ellewin\_289, KSunshine22\_285, LeoJr\_308, ReginaGlobina\_306, WaddleDee\_293,

### **Summary by start number:**

Start 1:

- Found in 7 of 17 ( 41.2% ) of genes in pham
- No Manual Annotations of this start.

- Called 85.7% of time when present
- Phage (with cluster) where this start called: Atuin\_301 (FC), DunneganBoMo\_294 (FC), Ellewin\_289 (FC), LeoJr\_308 (FC), ReginaGlobina\_306 (FC), WaddleDee\_293 (FC),

#### Start 2:

- Found in 10 of 17 ( 58.8% ) of genes in pham
- Manual Annotations of this start: 2 of 2
- Called 100.0% of time when present
- Phage (with cluster) where this start called: Bloom\_281 (FC), Chilliams\_286 (FC), GoldenEssence\_274 (FC), Mimi\_282 (FC), Patbob\_282 (FC), Phrampa\_277 (FC), Racecar\_280 (FC), Rockabye\_292 (FC), SJReid\_305 (FC), Talia1610\_278 (FC),

#### Start 3:

- Found in 7 of 17 ( 41.2% ) of genes in pham
- No Manual Annotations of this start.
- Called 14.3% of time when present
- Phage (with cluster) where this start called: KSunshine22\_285 (FC),

### Summary by clusters:

There is one cluster represented in this pham: FC

Info for manual annotations of cluster FC:

- Start number 2 was manually annotated 2 times for cluster FC.

### **Gene Information:**

Gene: Atuin\_301 Start: 174462, Stop: 174995, Start Num: 1

Candidate Starts for Atuin\_301:

(1, 174462), (3, 174495), (8, 174540), (10, 174564), (11, 174573), (21, 174636), (22, 174660), (37, 174750), (45, 174813), (56, 174876), (60, 174906), (63, 174948),

Gene: Bloom\_281 Start: 170408, Stop: 170920, Start Num: 2

Candidate Starts for Bloom\_281:

(Start: 2 @170408 has 2 MA's), (6, 170447), (13, 170510), (16, 170537), (25, 170618), (27, 170624), (30, 170639), (34, 170657), (35, 170672), (36, 170675), (38, 170687), (47, 170747), (49, 170759), (52, 170771), (53, 170786), (55, 170795), (59, 170819), (64, 170864),

Gene: Chilliams\_286 Start: 169605, Stop: 170159, Start Num: 2

Candidate Starts for Chilliams\_286:

(Start: 2 @169605 has 2 MA's), (9, 169701), (15, 169749), (19, 169767), (24, 169830), (27, 169839), (31, 169857), (33, 169869), (43, 169950), (44, 169953), (50, 169980), (51, 169986), (55, 170013), (62, 170091),

Gene: DunneganBoMo\_294 Start: 175945, Stop: 176463, Start Num: 1

Candidate Starts for DunneganBoMo\_294:

(1, 175945), (3, 175978), (4, 175984), (9, 176026), (12, 176047), (20, 176101), (23, 176149), (26, 176161), (29, 176170), (41, 176257), (46, 176284), (49, 176302), (53, 176329), (58, 176365), (60, 176374),

Gene: Ellewin\_289 Start: 175375, Stop: 175890, Start Num: 1

Candidate Starts for Ellewin\_289:

(1, 175375), (3, 175408), (4, 175414), (12, 175477), (20, 175531), (22, 175558), (23, 175579), (26, 175591), (29, 175600), (46, 175714), (49, 175732), (58, 175795), (60, 175804),

Gene: GoldenEssence\_274 Start: 167627, Stop: 168139, Start Num: 2

Candidate Starts for GoldenEssence\_274:

(Start: 2 @167627 has 2 MA's), (6, 167666), (7, 167675), (13, 167729), (16, 167756), (25, 167837), (27, 167843), (30, 167858), (34, 167876), (35, 167891), (36, 167894), (38, 167906), (47, 167966), (49, 167978), (52, 167990), (53, 168005), (55, 168014), (59, 168038), (64, 168083),

Gene: KSunshine22\_285 Start: 174196, Stop: 174684, Start Num: 3

Candidate Starts for KSunshine22\_285:

(1, 174163), (3, 174196), (4, 174202), (9, 174244), (12, 174265), (20, 174319), (23, 174367), (26, 174379), (29, 174388), (46, 174502), (49, 174520), (53, 174547), (58, 174583), (60, 174592), (64, 174640),

Gene: LeoJr\_308 Start: 175177, Stop: 175710, Start Num: 1

Candidate Starts for LeoJr\_308:

(1, 175177), (3, 175210), (8, 175255), (11, 175288), (21, 175351), (22, 175375), (37, 175465), (45, 175528), (56, 175591), (60, 175621), (63, 175663),

Gene: Mimi\_282 Start: 169804, Stop: 170316, Start Num: 2

Candidate Starts for Mimi\_282:

(Start: 2 @169804 has 2 MA's), (6, 169843), (13, 169906), (16, 169933), (25, 170014), (27, 170020), (30, 170035), (34, 170053), (35, 170068), (36, 170071), (38, 170083), (47, 170143), (49, 170155), (52, 170167), (53, 170182), (55, 170191), (59, 170215), (64, 170260),

Gene: Patbob\_282 Start: 172392, Stop: 172904, Start Num: 2

Candidate Starts for Patbob\_282:

(Start: 2 @172392 has 2 MA's), (6, 172431), (13, 172494), (16, 172521), (25, 172602), (27, 172608), (30, 172623), (34, 172641), (35, 172656), (36, 172659), (38, 172671), (47, 172731), (49, 172743), (52, 172755), (53, 172770), (55, 172779), (59, 172803), (64, 172848),

Gene: Phrampa\_277 Start: 173338, Stop: 173850, Start Num: 2

Candidate Starts for Phrampa\_277:

(Start: 2 @173338 has 2 MA's), (6, 173374), (13, 173437), (16, 173464), (17, 173467), (27, 173551), (28, 173554), (30, 173566), (34, 173584), (35, 173599), (53, 173713), (55, 173722), (59, 173746), (64, 173791),

Gene: Racecar\_280 Start: 170642, Stop: 171154, Start Num: 2

Candidate Starts for Racecar\_280:

(Start: 2 @170642 has 2 MA's), (6, 170681), (13, 170744), (16, 170771), (25, 170852), (27, 170858), (30, 170873), (34, 170891), (35, 170906), (36, 170909), (38, 170921), (42, 170954), (47, 170981), (49, 170993), (52, 171005), (53, 171020), (55, 171029), (59, 171053), (61, 171062), (64, 171098),

Gene: ReginaGlobina\_306 Start: 175321, Stop: 175854, Start Num: 1

Candidate Starts for ReginaGlobina\_306:

(1, 175321), (3, 175354), (8, 175399), (10, 175423), (11, 175432), (21, 175495), (22, 175519), (37, 175609), (45, 175672), (56, 175735), (60, 175765), (63, 175807),

Gene: Rockabye\_292 Start: 169497, Stop: 170057, Start Num: 2

Candidate Starts for Rockabye\_292:

(Start: 2 @169497 has 2 MA's), (6, 169542), (9, 169593), (14, 169626), (17, 169647), (18, 169653), (19, 169659), (24, 169722), (43, 169842), (50, 169872), (51, 169878), (52, 169881), (55, 169905), (60, 169941), (62, 169983),

Gene: SJReid\_305 Start: 170349, Stop: 170912, Start Num: 2

Candidate Starts for SJReid\_305:

(Start: 2 @170349 has 2 MA's), (5, 170391), (6, 170394), (7, 170403), (18, 170505), (28, 170586), (32, 170607), (38, 170646), (39, 170652), (40, 170670), (45, 170700), (48, 170715), (49, 170721), (53, 170748), (54, 170751), (57, 170766), (62, 170835), (65, 170847),

Gene: Talia1610\_278 Start: 171613, Stop: 172125, Start Num: 2

Candidate Starts for Talia1610\_278:

(Start: 2 @171613 has 2 MA's), (6, 171652), (13, 171715), (16, 171742), (25, 171823), (27, 171829), (30, 171844), (34, 171862), (35, 171877), (36, 171880), (38, 171892), (47, 171952), (49, 171964), (52, 171976), (53, 171991), (55, 172000), (59, 172024), (64, 172069),

Gene: WaddleDee\_293 Start: 174729, Stop: 175247, Start Num: 1

Candidate Starts for WaddleDee\_293:

(1, 174729), (3, 174762), (4, 174768), (9, 174810), (12, 174831), (20, 174885), (23, 174933), (26, 174945), (29, 174954), (41, 175041), (46, 175068), (49, 175086), (53, 175113), (58, 175149), (60, 175158),