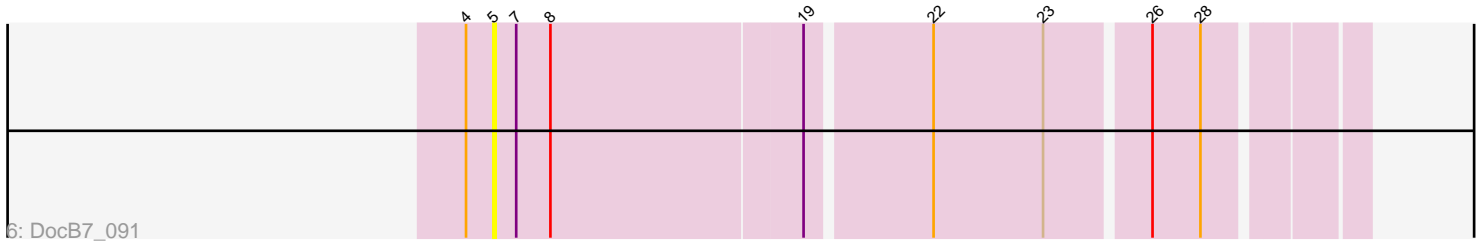
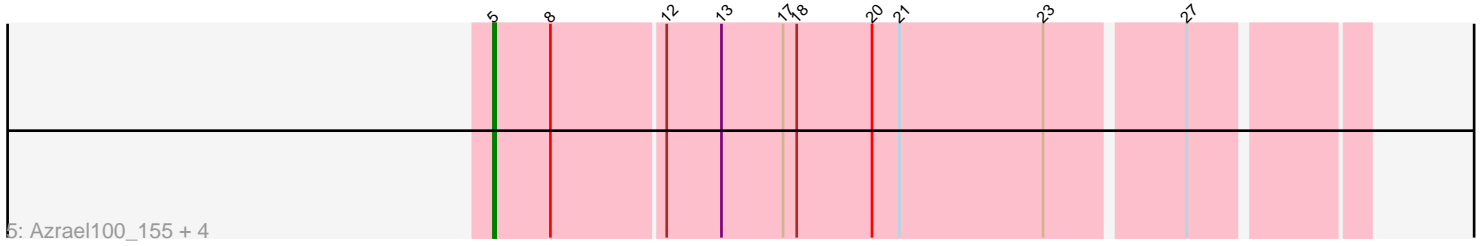
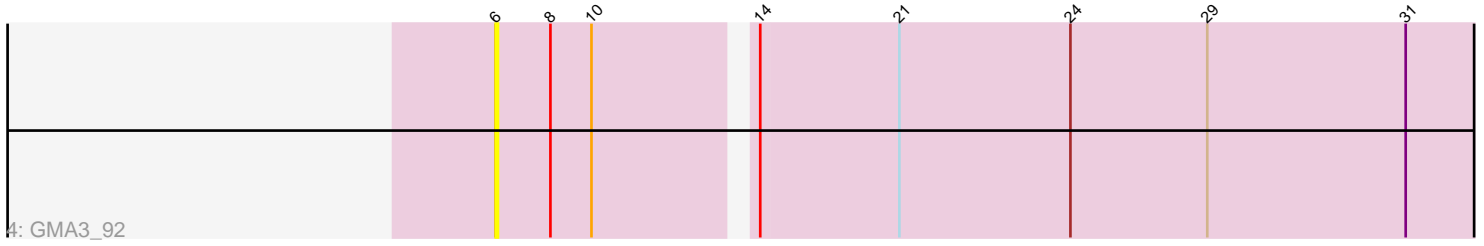
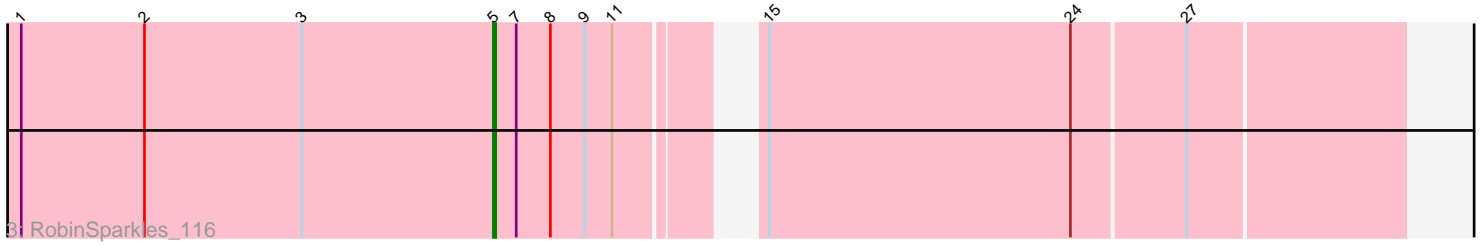
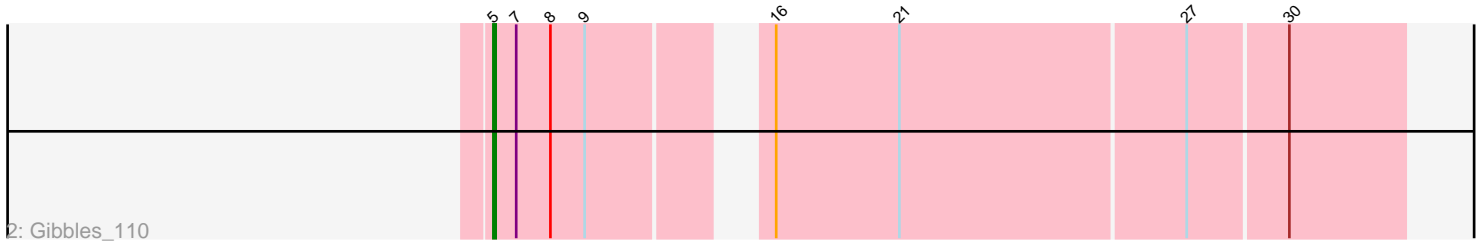
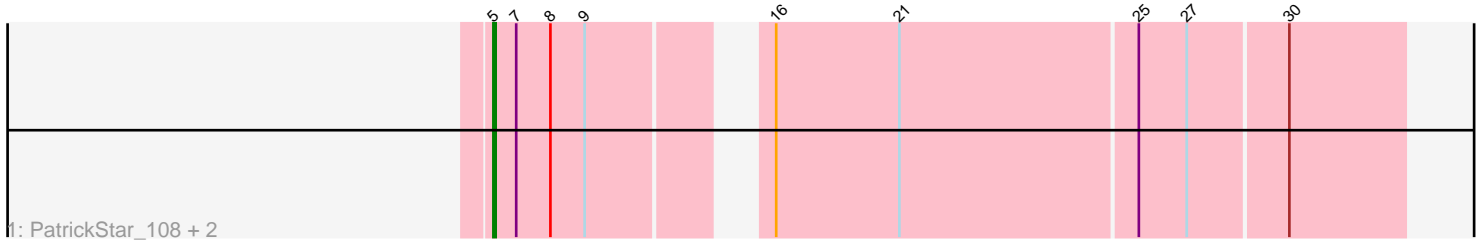


# Pham 198543



Note: Tracks are now grouped by subcluster and scaled. Switching in subcluster is indicated by changes in track color. Track scale is now set by default to display the region 30 bp upstream of start 1 to 30 bp downstream of the last possible start. If this default region is judged to be packed too tightly with annotated starts, the track will be further scaled to only show that region of the ORF with annotated starts. This action will be indicated by adding "Zoomed" to the title. For starts, yellow indicates the location of called starts comprised solely of Glimmer/GeneMark auto-annotations, green indicates the location of called starts with at least 1 manual gene annotation.

## Pham 198543 Report

This analysis was run 01/18/25 on database version 583.

Pham number 198543 has 12 members, 2 are drafts.

Phages represented in each track:

- Track 1 : PatrickStar\_108, Kampe\_108, Orchid\_107
- Track 2 : Gibbles\_110
- Track 3 : RobinSparkles\_116
- Track 4 : GMA3\_92
- Track 5 : Azrael100\_155, EniyanLRS\_156, MaryV\_149, Cosmo\_164, Wildcat\_163
- Track 6 : DocB7\_091

### ***Summary of Final Annotations (See graph section above for start numbers):***

The start number called the most often in the published annotations is 5, it was called in 10 of the 10 non-draft genes in the pham.

Genes that call this "Most Annotated" start:

- Azrael100\_155, Cosmo\_164, DocB7\_091, EniyanLRS\_156, Gibbles\_110, Kampe\_108, MaryV\_149, Orchid\_107, PatrickStar\_108, RobinSparkles\_116, Wildcat\_163,

Genes that have the "Most Annotated" start but do not call it:

- 

Genes that do not have the "Most Annotated" start:

- GMA3\_92,

### **Summary by start number:**

Start 5:

- Found in 11 of 12 ( 91.7% ) of genes in pham
- Manual Annotations of this start: 10 of 10
- Called 100.0% of time when present
- Phage (with cluster) where this start called: Azrael100\_155 (V), Cosmo\_164 (V), DocB7\_091 (singleton), EniyanLRS\_156 (V), Gibbles\_110 (CX), Kampe\_108 (CX), MaryV\_149 (V), Orchid\_107 (CX), PatrickStar\_108 (CX), RobinSparkles\_116 (CX), Wildcat\_163 (V),

Start 6:

- Found in 1 of 12 ( 8.3% ) of genes in pham
- No Manual Annotations of this start.
- Called 100.0% of time when present
- Phage (with cluster) where this start called: GMA3\_92 (DF2),

### **Summary by clusters:**

There are 4 clusters represented in this pham: DF2, singleton, CX, V,

Info for manual annotations of cluster CX:

- Start number 5 was manually annotated 5 times for cluster CX.

Info for manual annotations of cluster V:

- Start number 5 was manually annotated 5 times for cluster V.

### **Gene Information:**

Gene: Azrael100\_155 Start: 73478, Stop: 73113, Start Num: 5

Candidate Starts for Azrael100\_155:

(Start: 5 @73478 has 10 MA's), (8, 73454), (12, 73406), (13, 73382), (17, 73355), (18, 73349), (20, 73316), (21, 73304), (23, 73241), (27, 73184),

Gene: Cosmo\_164 Start: 73642, Stop: 73277, Start Num: 5

Candidate Starts for Cosmo\_164:

(Start: 5 @73642 has 10 MA's), (8, 73618), (12, 73570), (13, 73546), (17, 73519), (18, 73513), (20, 73480), (21, 73468), (23, 73405), (27, 73348),

Gene: DocB7\_091 Start: 64971, Stop: 64615, Start Num: 5

Candidate Starts for DocB7\_091:

(4, 64983), (Start: 5 @64971 has 10 MA's), (7, 64962), (8, 64947), (19, 64839), (22, 64788), (23, 64740), (26, 64698), (28, 64677),

Gene: EniyanLRS\_156 Start: 73969, Stop: 73604, Start Num: 5

Candidate Starts for EniyanLRS\_156:

(Start: 5 @73969 has 10 MA's), (8, 73945), (12, 73897), (13, 73873), (17, 73846), (18, 73840), (20, 73807), (21, 73795), (23, 73732), (27, 73675),

Gene: GMA3\_92 Start: 68671, Stop: 68228, Start Num: 6

Candidate Starts for GMA3\_92:

(6, 68671), (8, 68647), (10, 68629), (14, 68566), (21, 68506), (24, 68431), (29, 68371), (31, 68284),

Gene: Gibbles\_110 Start: 75976, Stop: 75608, Start Num: 5

Candidate Starts for Gibbles\_110:

(Start: 5 @75976 has 10 MA's), (7, 75967), (8, 75952), (9, 75937), (16, 75877), (21, 75823), (27, 75700), (30, 75658),

Gene: Kampe\_108 Start: 75398, Stop: 75030, Start Num: 5

Candidate Starts for Kampe\_108:

(Start: 5 @75398 has 10 MA's), (7, 75389), (8, 75374), (9, 75359), (16, 75299), (21, 75245), (25, 75143), (27, 75122), (30, 75080),

Gene: MaryV\_149 Start: 71819, Stop: 71454, Start Num: 5

Candidate Starts for MaryV\_149:

(Start: 5 @71819 has 10 MA's), (8, 71795), (12, 71747), (13, 71723), (17, 71696), (18, 71690), (20, 71657), (21, 71645), (23, 71582), (27, 71525),

Gene: Orchid\_107 Start: 75399, Stop: 75031, Start Num: 5

Candidate Starts for Orchid\_107:

(Start: 5 @75399 has 10 MA's), (7, 75390), (8, 75375), (9, 75360), (16, 75300), (21, 75246), (25, 75144), (27, 75123), (30, 75081),

Gene: PatrickStar\_108 Start: 75478, Stop: 75110, Start Num: 5

Candidate Starts for PatrickStar\_108:

(Start: 5 @75478 has 10 MA's), (7, 75469), (8, 75454), (9, 75439), (16, 75379), (21, 75325), (25, 75223), (27, 75202), (30, 75160),

Gene: RobinSparkles\_116 Start: 76337, Stop: 75972, Start Num: 5

Candidate Starts for RobinSparkles\_116:

(1, 76544), (2, 76490), (3, 76421), (Start: 5 @76337 has 10 MA's), (7, 76328), (8, 76313), (9, 76298), (11, 76286), (15, 76244), (24, 76112), (27, 76064),

Gene: Wildcat\_163 Start: 73712, Stop: 73347, Start Num: 5

Candidate Starts for Wildcat\_163:

(Start: 5 @73712 has 10 MA's), (8, 73688), (12, 73640), (13, 73616), (17, 73589), (18, 73583), (20, 73550), (21, 73538), (23, 73475), (27, 73418),