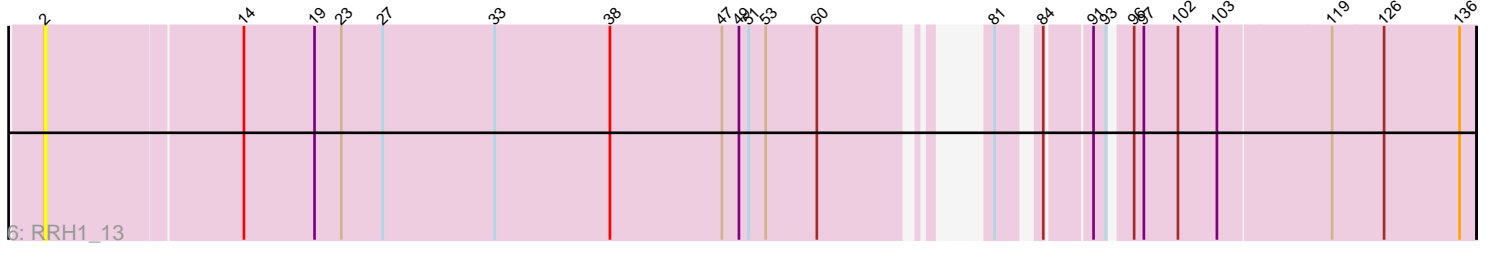
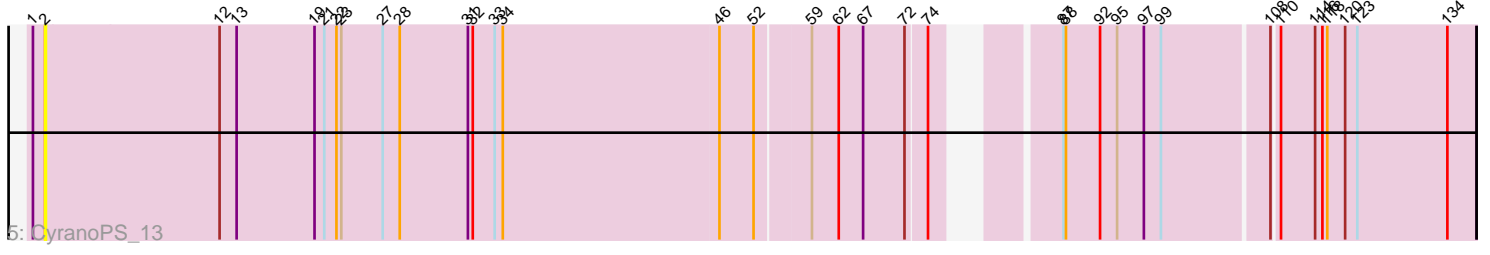
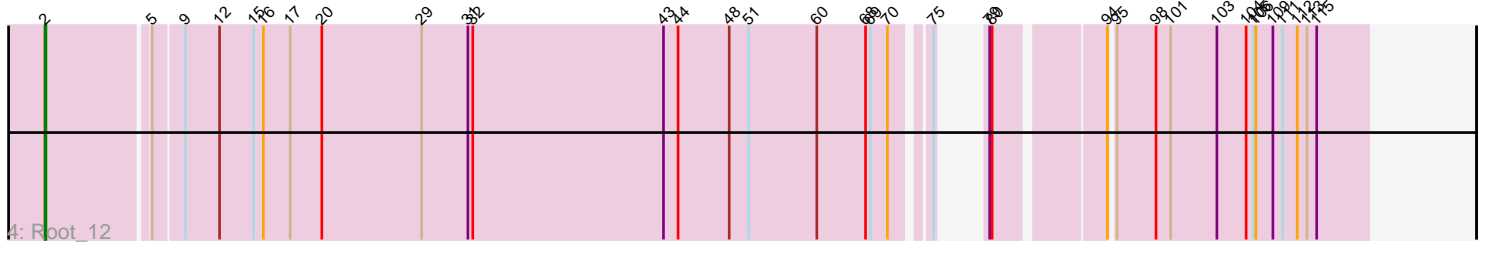
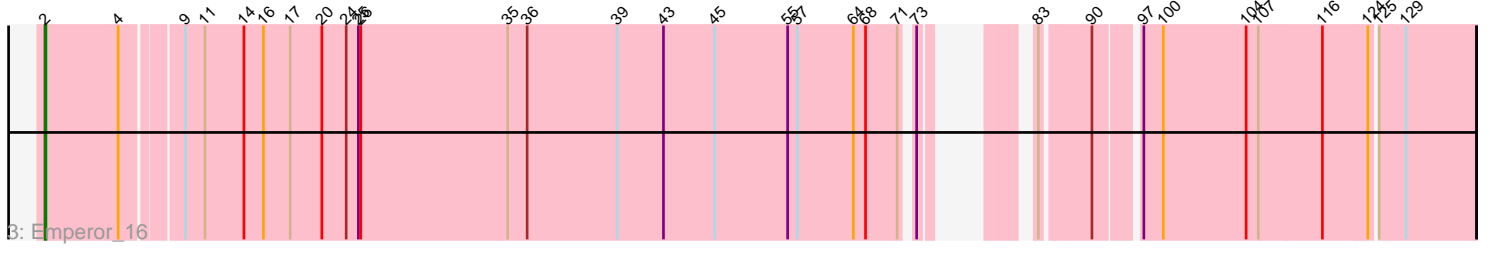
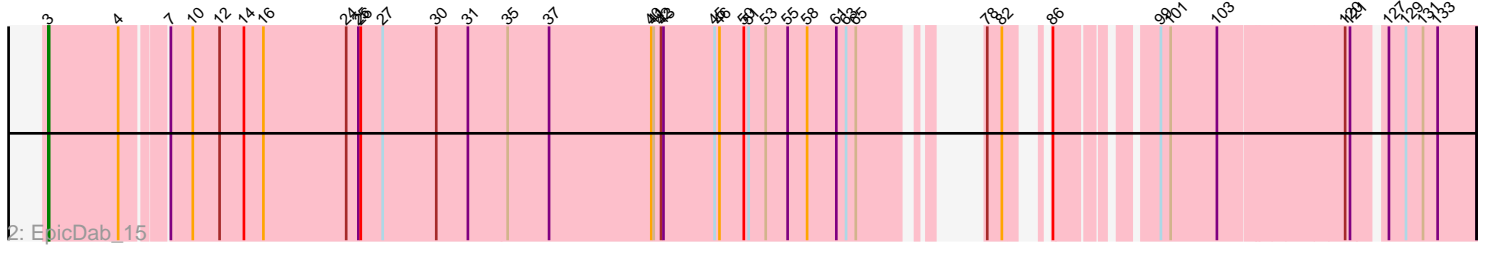
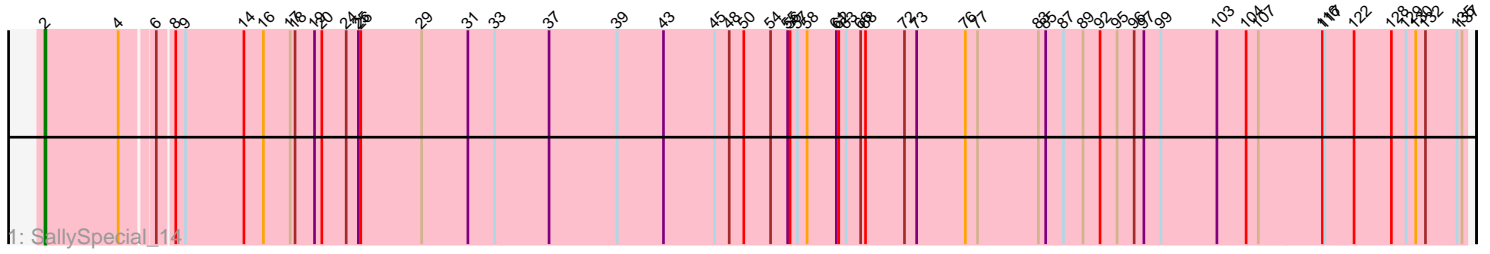


Pham 198758



Note: Tracks are now grouped by subcluster and scaled. Switching in subcluster is indicated by changes in track color. Track scale is now set by default to display the region 30 bp upstream of start 1 to 30 bp downstream of the last possible start. If this default region is judged to be packed too tightly with annotated starts, the track will be further scaled to only show that region of the ORF with annotated starts. This action will be indicated by adding "Zoomed" to the title. For starts, yellow indicates the location of called starts comprised solely of Glimmer/GeneMark auto-annotations, green indicates the location of called starts with at least 1 manual gene annotation.

Pham 198758 Report

This analysis was run 01/18/25 on database version 583.

Pham number 198758 has 6 members, 2 are drafts.

Phages represented in each track:

- Track 1 : SallySpecial_14
- Track 2 : EpicDab_15
- Track 3 : Emperor_16
- Track 4 : Root_12
- Track 5 : CyranoPS_13
- Track 6 : RRH1_13

Summary of Final Annotations (See graph section above for start numbers):

The start number called the most often in the published annotations is 2, it was called in 3 of the 4 non-draft genes in the pham.

Genes that call this "Most Annotated" start:

- CyranoPS_13, Emperor_16, RRH1_13, Root_12, SallySpecial_14,

Genes that have the "Most Annotated" start but do not call it:

-

Genes that do not have the "Most Annotated" start:

- EpicDab_15,

Summary by start number:

Start 2:

- Found in 5 of 6 (83.3%) of genes in pham
- Manual Annotations of this start: 3 of 4
- Called 100.0% of time when present
- Phage (with cluster) where this start called: CyranoPS_13 (singleton), Emperor_16 (DM), RRH1_13 (singleton), Root_12 (singleton), SallySpecial_14 (DM),

Start 3:

- Found in 1 of 6 (16.7%) of genes in pham
- Manual Annotations of this start: 1 of 4
- Called 100.0% of time when present

- Phage (with cluster) where this start called: EpicDab_15 (DM),

Summary by clusters:

There are 2 clusters represented in this pham: singleton, DM,

Info for manual annotations of cluster DM:

- Start number 2 was manually annotated 2 times for cluster DM.
- Start number 3 was manually annotated 1 time for cluster DM.

Gene Information:

Gene: CyranoPS_13 Start: 7551, Stop: 9212, Start Num: 2

Candidate Starts for CyranoPS_13:

(1, 7536), (Start: 2 @7551 has 3 MA's), (12, 7764), (13, 7785), (19, 7881), (21, 7893), (22, 7908), (23, 7914), (27, 7965), (28, 7986), (31, 8070), (32, 8076), (33, 8103), (34, 8112), (46, 8376), (52, 8418), (59, 8481), (62, 8514), (67, 8544), (72, 8595), (74, 8619), (87, 8721), (88, 8724), (92, 8766), (95, 8787), (97, 8820), (99, 8841), (108, 8967), (110, 8973), (114, 9015), (116, 9024), (118, 9030), (120, 9051), (123, 9066), (134, 9177),

Gene: Emperor_16 Start: 9361, Stop: 10944, Start Num: 2

Candidate Starts for Emperor_16:

(Start: 2 @9361 has 3 MA's), (4, 9448), (9, 9511), (11, 9535), (14, 9583), (16, 9607), (17, 9640), (20, 9679), (24, 9709), (25, 9724), (26, 9727), (35, 9907), (36, 9931), (39, 10042), (43, 10099), (45, 10162), (55, 10252), (57, 10264), (64, 10333), (68, 10348), (71, 10387), (73, 10396), (83, 10450), (90, 10504), (97, 10549), (100, 10573), (104, 10675), (107, 10690), (116, 10765), (124, 10819), (125, 10825), (129, 10858),

Gene: EpicDab_15 Start: 9326, Stop: 10867, Start Num: 3

Candidate Starts for EpicDab_15:

(Start: 3 @9326 has 1 MA's), (4, 9410), (7, 9458), (10, 9482), (12, 9515), (14, 9545), (16, 9569), (24, 9671), (25, 9686), (26, 9689), (27, 9716), (30, 9782), (31, 9821), (35, 9869), (37, 9920), (40, 10046), (41, 10049), (42, 10058), (43, 10061), (45, 10124), (46, 10130), (50, 10160), (51, 10166), (53, 10187), (55, 10214), (58, 10238), (61, 10274), (63, 10286), (65, 10298), (78, 10373), (82, 10391), (86, 10412), (99, 10508), (101, 10520), (103, 10577), (120, 10721), (121, 10727), (127, 10760), (129, 10781), (131, 10802), (133, 10820),

Gene: RRH1_13 Start: 8442, Stop: 10040, Start Num: 2

Candidate Starts for RRH1_13:

(Start: 2 @8442 has 3 MA's), (14, 8676), (19, 8763), (23, 8796), (27, 8847), (33, 8985), (38, 9126), (47, 9264), (49, 9285), (51, 9297), (53, 9318), (60, 9381), (81, 9510), (84, 9546), (91, 9594), (93, 9609), (96, 9630), (97, 9642), (102, 9681), (103, 9729), (119, 9864), (126, 9927), (136, 10020),

Gene: Root_12 Start: 7731, Stop: 9218, Start Num: 2

Candidate Starts for Root_12:

(Start: 2 @7731 has 3 MA's), (5, 7848), (9, 7881), (12, 7923), (15, 7965), (16, 7977), (17, 8010), (20, 8049), (29, 8172), (31, 8229), (32, 8235), (43, 8469), (44, 8487), (48, 8550), (51, 8574), (60, 8658), (68, 8718), (69, 8724), (70, 8745), (75, 8781), (79, 8790), (80, 8793), (94, 8913), (95, 8916), (98, 8964), (101, 8982), (103, 9036), (104, 9072), (105, 9081), (106, 9084), (109, 9105), (111, 9117), (112, 9135), (113, 9147), (115, 9159),

Gene: SallySpecial_14 Start: 8310, Stop: 10028, Start Num: 2

Candidate Starts for SallySpecial_14:

(Start: 2 @8310 has 3 MA's), (4, 8397), (6, 8433), (8, 8448), (9, 8460), (14, 8532), (16, 8556), (17, 8589), (18, 8595), (19, 8619), (20, 8628), (24, 8658), (25, 8673), (26, 8676), (29, 8751), (31, 8808), (33, 8841), (37, 8907), (39, 8991), (43, 9048), (45, 9111), (48, 9129), (50, 9147), (54, 9180), (55, 9201), (56, 9204), (57, 9213), (58, 9225), (61, 9261), (62, 9264), (63, 9273), (66, 9291), (68, 9297), (72, 9345), (73, 9360), (76, 9420), (77, 9435), (83, 9510), (85, 9519), (87, 9540), (89, 9564), (92, 9585), (95, 9606), (96, 9627), (97, 9639), (99, 9660), (103, 9729), (104, 9765), (107, 9780), (116, 9855), (117, 9858), (122, 9891), (128, 9936), (129, 9954), (130, 9966), (132, 9978), (135, 10017), (137, 10023),