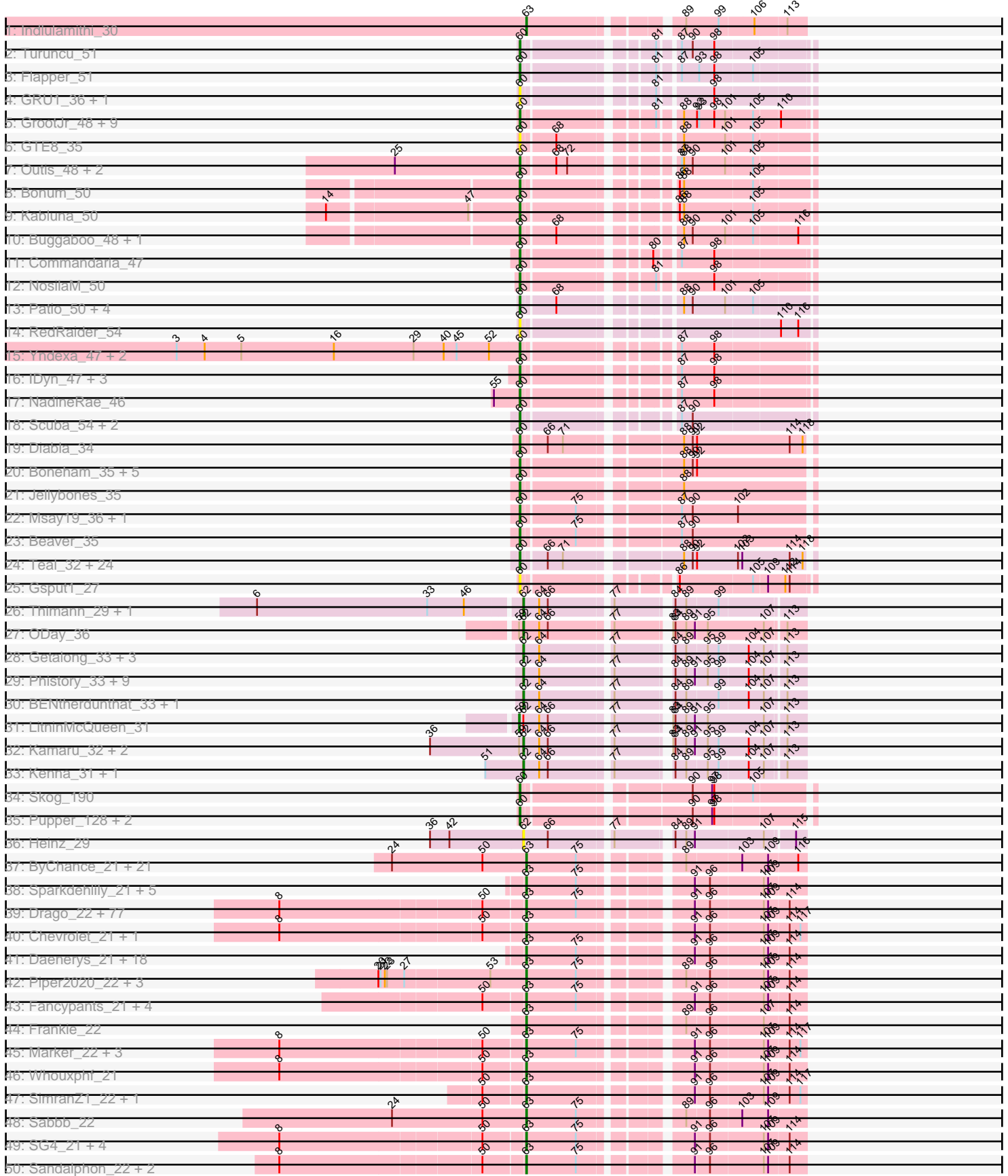
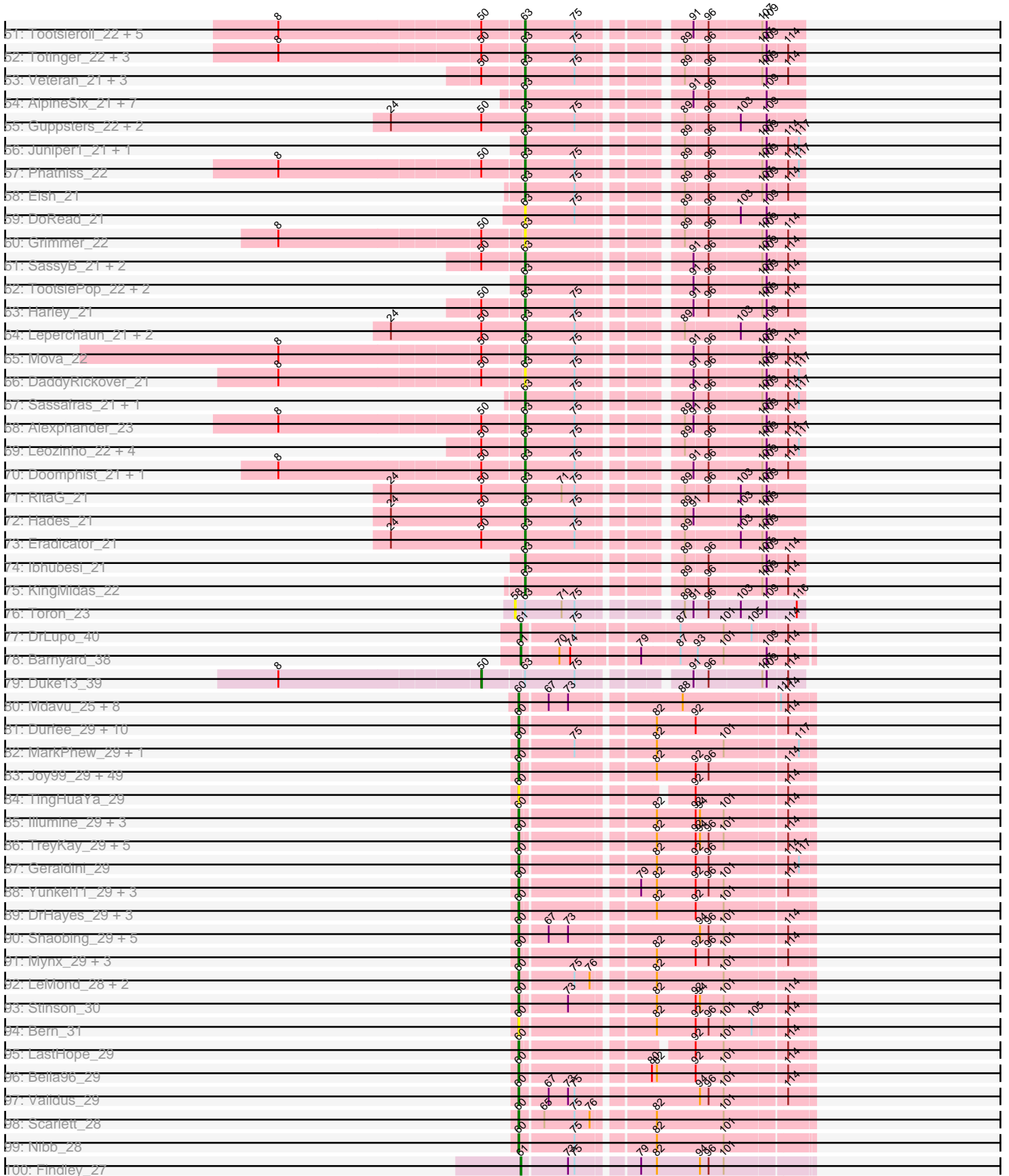


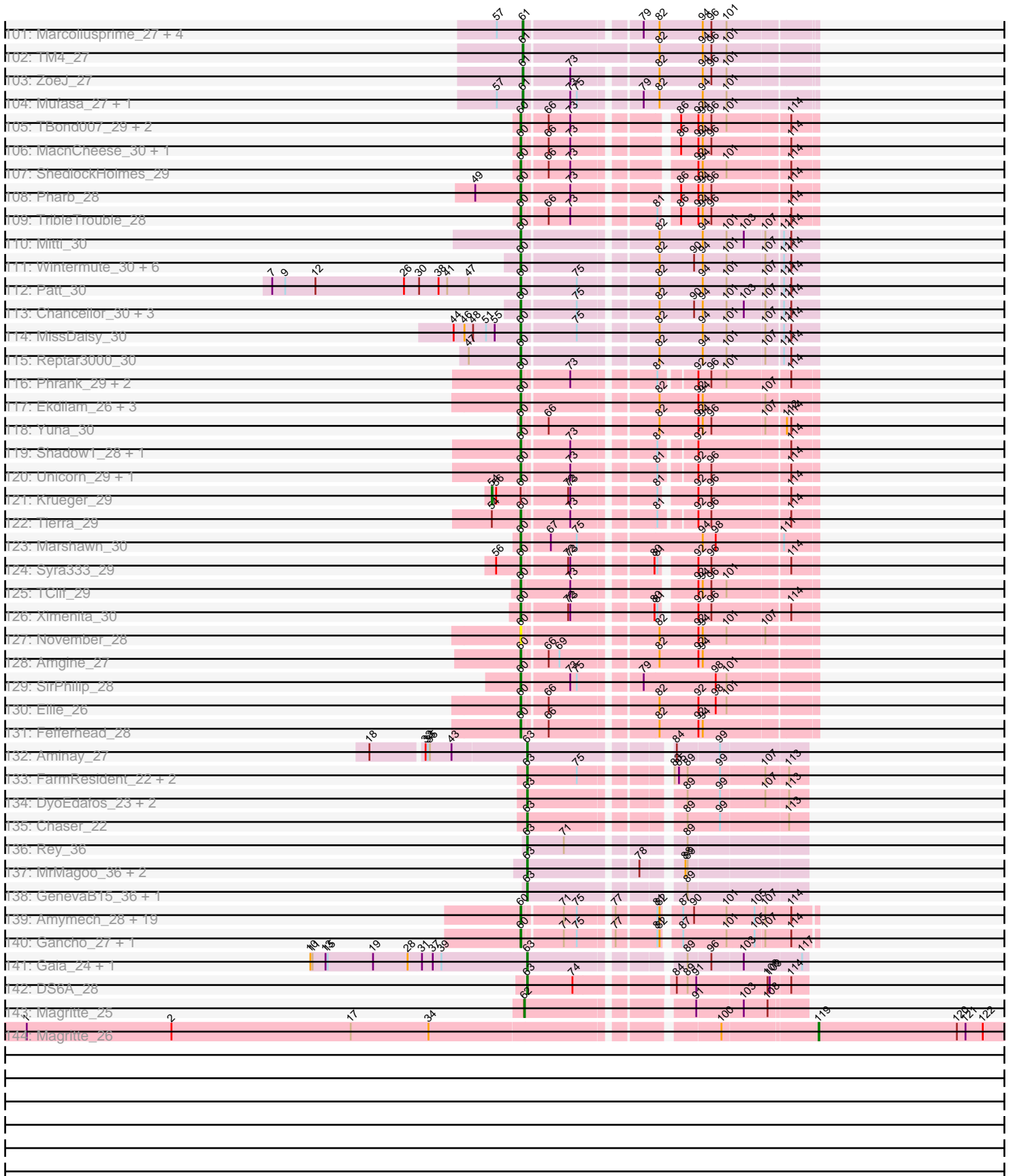
Pham 199870



Pham 199870



Pham 199870



Note: Tracks are now grouped by subcluster and scaled. Switching in subcluster is indicated by changes in track color. Track scale is now set by default to display the region 30 bp upstream of start 1 to 30 bp downstream of the last possible start. If this default region is judged to be packed too tightly with annotated starts, the track will be further scaled to only show that region of the ORF with annotated starts. This action will be indicated by adding "Zoomed" to the title. For starts, yellow indicates the location of called starts comprised solely of Glimmer/GeneMark auto-annotations, green indicates the location of called starts with at least 1 manual gene annotation.

Pham 199870 Report

This analysis was run 01/18/25 on database version 583.

Pham number 199870 has 533 members, 44 are drafts.

Phages represented in each track:

- Track 1 : Indlulamithi_30
- Track 2 : Turuncu_51
- Track 3 : Flapper_51
- Track 4 : GRU1_36, GTE5_38
- Track 5 : GrootJr_48, Emianna_46, Kurt_46, Tracker_46, NatB6_46, KidneyBean_46, Phomeo_45, Foxboro_47, NovumRegina_46, Jifall16_45
- Track 6 : GTE8_35
- Track 7 : Outis_48, MerCougar_48, StarStruck_48
- Track 8 : Bonum_50
- Track 9 : Kabluna_50
- Track 10 : Buggaboo_48, SuperSulley_48
- Track 11 : Commandaria_47
- Track 12 : NosilaM_50
- Track 13 : Patio_50, Skysand_49, Ennea_53, Lollipop1437_52, Float294_49
- Track 14 : RedRaider_54
- Track 15 : Yndexa_47, BiPauneto_48, Sukkupi_47
- Track 16 : IDyn_47, HubbaBubba_44, Marietta_48, WhoseManz_47
- Track 17 : NadineRae_46
- Track 18 : Scuba_54, Pleakley_54, Fury_54
- Track 19 : Diabla_34
- Track 20 : Boneham_35, CinnamonToast_36, Butterball_35, FelixAlejandro_36, BirksAndSocks_35, John316_35
- Track 21 : Jellybones_35
- Track 22 : Msay19_36, Poland_36
- Track 23 : Beaver_35
- Track 24 : Teal_32, Minos_33, Shelley_32, Harambe_32, Anamika_32, MrWormie_32, Lidong_32, Sticker17_32, Lahirium_32, Bianmat_32, Damp_32, Newt_33, Luker_33, Hail2Pitt_32, Jams_32, Hello_32, Jormungandr_32, Kaseim_33, Woes_32, Nimi13_32, Neoevie_32, Berries_32, Guillaume_32, GalacticEye_32, Charianelly_32
- Track 25 : Gsput1_27
- Track 26 : Thimann_29, Suerte_27
- Track 27 : ODay_36
- Track 28 : Getalong_33, Whitney_33, Crater_30, Budski_32
- Track 29 : Phistory_33, BearBQ_31, ShawBrad_32, Horus_32, Asapag_32, Leroy_32, Periwinkle_34, Phabuloso_31, Kuwabara_31, MortyNRick_31
- Track 30 : BENtherdunthat_33, BotCity_34

- Track 31 : LitninMcQueen_31
- Track 32 : Kamaru_32, Ecliptus_35, Holliday_32
- Track 33 : Kenna_31, Lutum_32
- Track 34 : Skog_190
- Track 35 : Pupper_128, SCentae_127, CherryTomatoes_127
- Track 36 : Heinz_29
- Track 37 : ByChance_21, BobaPhett_21, Cabrinians_21, FreddyB_21, Priscilla_21, Lizziana_21, DosHalletts_22, Mattes_21, Yorick_21, James_21, Jarcob_21, OlympiaSaint_21, Nivrat_21, ShowerHandel_21, Burwell21_21, LilMoolah_21, NormanBulbieJr_21, ShiLan_21, Gorge_21, Zizzle_21, Martik_21, Spoonbill_21
- Track 38 : Sparkdehlily_21, Philus_21, TDanisky_21, Saal_21, DRBy19_21, SwagPiggett_21
- Track 39 : Drago_22, Karhdo_21, Enby_22, Emma_21, Ruby_21, Job42_24, Tweety_22, Galactic_21, BodEinwohner17_21, Brushbloom_23, Taj_21, Rita_21, Wee_22, Donkeykong_21, Optimus_40, Ramsey_22, MisterCuddles_21, EleanorGeorge_21, VRedHorse_21, Moonbeam_22, Fruitloop_21, CaptainTrips_22, Filuzino_21, XFactor_21, MilleniumForce_22, Rockne_21, Blexus_21, LittleE_42, Firehouse51_22, LunaBlu_22, IMPilo_21, Fastidio_21, Hlubikazi_21, MinionDave_22, Whatsapiecost_21, JalFarm20_23, Ovechkin_21, QuickMath_22, Hamulus_21, Kimberlium_23, RedBird_21, Omega_41, Dante_21, Bobi_23, PhesterPhotato_21, IbOuu_21, PMC_21, BuzzLyseyear_23, SuperGrey_22, DillTech15_21, Gonephishing_37, Batiatus_21, WillSterrel_22, Mutaforma13_21, Starcevich_22, Juice456_23, Mandlovu_21, Latretium_22, Phalconet_21, KristaRAM_22, DLane_21, Hegedechwinu_22, Aubs_21, IrishSherpFalk_22, Flathead_22, Llij_21, Seagreen_22, Plumbus_22, Melissauren88_21, Strokeseat_21, Beakin_22, UncleRicky_24, DeadP_21, MulchExplorer_24, Lorde_22, Girr_21, Blarby_29, Maravista_21
- Track 40 : Chevrolet_21, ArcusAngelus_21
- Track 41 : Daenerys_21, Geralt_21, BlueCrab_21, Nimbo_21, PHappiness_21, Zerg_21, Polka14_22, Empress_22, JoeyJr_21, Quico_22, Deb65_21, Scottish_22, Pacc40_21, Doug_22, Florinda_21, Dorothy_21, OldBen_21, RockyHorror_22, Girafales_22
- Track 42 : Piper2020_22, Aloeri_22, DocMcStuffins_22, ChickenDinner_22
- Track 43 : Fancypants_21, Ardmore_21, Chuckly_21, StAnnes_21, Nitzel_22
- Track 44 : Frankie_22
- Track 45 : Marker_22, Cornucopia_22, DaWorst_23, Spartacus_22
- Track 46 : Whouxphf_21
- Track 47 : SimranZ1_22, Che8_22
- Track 48 : Sabbb_22
- Track 49 : SG4_21, Wanda_42, DotProduct_21, Wachhund_21, BAKA_39
- Track 50 : Sandalphon_22, Byougenkin_21, Minnie_22
- Track 51 : Tootsieroll_22, Bubbles123_22, Spikelee_22, Stap_22, Krakatau_22, Radiance_21
- Track 52 : Totinger_22, Vivum_21, LittleShirley_22, Rialto_23
- Track 53 : Veteran_21, Phasih_22, Boomer_22, GUmbie_21
- Track 54 : AlpineSix_21, Sebastian_21, Ochi17_21, Jinglebell_20, Modragons_21, Oksu_22, OfUltron_21, Llama_21
- Track 55 : Guppsters_22, OwisT2W_23, Gandalph_21
- Track 56 : Juniper1_21, Mahavrat_21
- Track 57 : Phatniss_22
- Track 58 : Eish_21
- Track 59 : DoRead_21
- Track 60 : Grimmer_22
- Track 61 : SassyB_21, PopTart_21, Mozy_22

- Track 62 : TootsiePop_22, Awesomesauce_22, Misha28_22
- Track 63 : Harley_21
- Track 64 : Leperchaun_21, Royals2015_21, Minerva_42
- Track 65 : Mova_22
- Track 66 : DaddyRickover_21
- Track 67 : Sassafras_21, Inventum_21
- Track 68 : Alexphander_23
- Track 69 : Leozinho_22, Mantra_21, DirtMcgirt_22, GigiOuiOui_21, SiSi_21
- Track 70 : Doomphist_21, Poenanya_21
- Track 71 : RitaG_21
- Track 72 : Hades_21
- Track 73 : Eradicator_21
- Track 74 : lbhubesi_21
- Track 75 : KingMidas_22
- Track 76 : Toron_23
- Track 77 : DrLupo_40
- Track 78 : Barnyard_38
- Track 79 : Duke13_39
- Track 80 : Mdavu_25, Enkosi_25, Nikao_25, LilPharaoh_25, Binglebops_25, Torres_25, Amelie_25, SgtBeansprout_25, Nutello_25
- Track 81 : Durfee_29, Boiii_29, Padfoot_29, Asayake_29, CaseJules_29, Piatt_29, Blizzard_29, Beezoo_29, Hyperbowlee_29, BEEST_29, ShiaSurprise_29
- Track 82 : MarkPhew_29, Chris_28
- Track 83 : Joy99_29, Adonis_29, HedwigODU_29, Sulley_29, Dalmuri_29, Inky_29, Anaya_30, BGIlluviae_29, Capricorn_29, Jeckyll_29, CallaLilly_30, MeaningOfLife_29, Veliki_29, Ramen_29, Zabiza_29, Rapunzel97_29, ActinUp_29, Pokerus_28, Megsy_29, AlishaPH_29, Belladonna_29, CheetoDust_29, Peel_29, Angelica_29, Padpat_29, Ganymede_30, MacKat_30, Twitch_29, Emerson_29, BarrelRoll_29, Adephegia_29, Deby_29, Llorens_29, Apocalypse_29, BaghaKamala_29, JAWS_29, Clipper_31, Jarvi_29, Spock_29, QuincyRose_28, CrimD_29, Slimphazie_29, Tachez_29, Topper_29, CREW_29, Jayhawk_29, Atiba_29, Homura_29, Rosmarinus_29, Lunahalos_29
- Track 84 : TingHuaYa_29
- Track 85 : Illumine_29, LaterM_29, Devera_29, Dole_29
- Track 86 : TreyKay_29, TaiwanKao_30, Murucutumbu_29, LindNT_29, Prithvi_29, Ageofdapage_29
- Track 87 : Geraldini_29
- Track 88 : Yunkel11_29, Guanica15_29, YoureAdopted_28, Efra2_29
- Track 89 : DrHayes_29, Urkel_29, TiniBug_29, SamuelLPlaqson_29
- Track 90 : Shaobing_29, McMater_29, Dartin_29, Peanam_29, Richo_29, Niklas_29
- Track 91 : Mynx_29, Zavala_29, TruffulaTree_29, Tiri_29
- Track 92 : LeMond_28, KiSi_28, Oscar_28
- Track 93 : Stinson_30
- Track 94 : Bern_31
- Track 95 : LastHope_29
- Track 96 : Bella96_29
- Track 97 : Validus_29
- Track 98 : Scarlett_28
- Track 99 : Nibb_28
- Track 100 : Findley_27
- Track 101 : Marcoliusprime_27, Milly_27, Strobilo_27, DismalStressor_27, DismalFunk_27
- Track 102 : TM4_27

- Track 103 : ZoeJ_27
- Track 104 : Mufasa_27, BoostSeason_27
- Track 105 : TBond007_29, Pixie_29, Keshu_30
- Track 106 : MacnCheese_30, Hurricane_30
- Track 107 : ShedlockHolmes_29
- Track 108 : Pharb_28
- Track 109 : TripleTrouble_28
- Track 110 : Mitti_30
- Track 111 : Wintermute_30, Malthus_31, JF1_30, Y10_30, Fionnbharth_30, Kraw_31, Y2_30
- Track 112 : Patt_30
- Track 113 : Chancellor_30, Slarp_30, Cheetobro_30, OmniCritical_30
- Track 114 : MissDaisy_30
- Track 115 : Reptar3000_30
- Track 116 : Phrank_29, Bryler_29, Cain_29
- Track 117 : Ekdilam_26, Amohniton_28, DarthP_28, Hammy_28
- Track 118 : Yuna_30
- Track 119 : Shadow1_28, Sunflower1121_28
- Track 120 : Unicorn_29, PhelpsODU_29
- Track 121 : Krueger_29
- Track 122 : Tierra_29
- Track 123 : Marshawn_30
- Track 124 : Syra333_29
- Track 125 : TClif_29
- Track 126 : Ximenita_30
- Track 127 : November_28
- Track 128 : Amgine_27
- Track 129 : SirPhilip_28
- Track 130 : Ellie_26
- Track 131 : Fefferhead_28
- Track 132 : Aminay_27
- Track 133 : FarmResident_22, Quby_22, Douge_22
- Track 134 : DyoEdafos_23, Bromden_24, Kropertea_22
- Track 135 : Chaser_22
- Track 136 : Rey_36
- Track 137 : MrMagoo_36, GardenSalsa_36, Estes_37
- Track 138 : GenevaB15_36, Aziz_36
- Track 139 : Amymech_28, Webster2_28, Giles_28, LilHazelNut_28, Forge_28, Kinbote_28, Hadrien_28, Evanesce_28, HH92_28, Wishmaker_28, Ein37_28, Daegal_29, Dewey_28, Amochick_28, Luke_28, Hail_28, Ubuntu_28, DeepSoil15_28, OBUpride_28, Luna22_28
- Track 140 : Gancho_27, Gravaillia_28
- Track 141 : Gaia_24, Nebkiss_25
- Track 142 : DS6A_28
- Track 143 : Magritte_25
- Track 144 : Magritte_26

Summary of Final Annotations (See graph section above for start numbers):

The start number called the most often in the published annotations is 60, it was called in 239 of the 489 non-draft genes in the pham.

Genes that call this "Most Annotated" start:

- ActinUp_29, Adepagia_29, Adonis_29, Ageofdapage_29, AlishaPH_29, Amelie_25, Amgine_27, Amochick_28, Amohnition_28, Amymech_28, Anamika_32, Anaya_30, Angelica_29, Apocalypse_29, Asayake_29, Atiba_29, BEEST_29, BGIlluviae_29, BaghaKamala_29, BarrelRoll_29, Beaver_35, Beezoo_29, Bella96_29, Belladonna_29, Bern_31, Berries_32, BiPauneto_48, Bianmat_32, Binglebops_25, BirksAndSocks_35, Blizzard_29, Boiiii_29, Boneham_35, Bonum_50, Bryler_29, Buggaboo_48, Butterball_35, CREW_29, Cain_29, CallaLilly_30, Capricorn_29, CaseJules_29, Chancellor_30, Charianelly_32, CheetoDust_29, Cheetobro_30, CherryTomatoes_127, Chris_28, CinnamonToast_36, Clipper_31, Commandaria_47, CrimD_29, Daegal_29, Dalmuri_29, Damp_32, DarthP_28, Dartin_29, Deby_29, DeepSoil15_28, Devera_29, Dewey_28, Diabla_34, Dole_29, DrHayes_29, Durfee_29, Efra2_29, Ein37_28, Ekdilam_26, Ellie_26, Emerson_29, Emianna_46, Enkosi_25, Ennea_53, Evanesce_28, Fefferhead_28, FelixAlejandro_36, Fionnbharth_30, Flapper_51, Float294_49, Forge_28, Foxboro_47, Fury_54, GRU1_36, GTE5_38, GTE8_35, GalacticEye_32, Gancho_27, Ganymede_30, Geraldini_29, Giles_28, Gravaillia_28, GrootJr_48, Gsput1_27, Guanica15_29, Guillaume_32, HH92_28, Hadrien_28, Hail2Pitt_32, Hail_28, Hammy_28, Harambe_32, HedwigODU_29, Hello_32, Homura_29, HubbaBubba_44, Hurricane_30, Hyperbowlee_29, IDyn_47, Illumine_29, Inky_29, JAWS_29, JF1_30, Jams_32, Jarvi_29, Jayhawk_29, Jeckyll_29, Jellybones_35, Jifall16_45, John316_35, Jormungandr_32, Joy99_29, Kabluna_50, Kaseim_33, Keshu_30, KiSi_28, KidneyBean_46, Kinbote_28, Kraw_31, Kurt_46, Lahorium_32, LastHope_29, LaterM_29, LeMond_28, Lidong_32, LilHazelnut_28, LilPharaoh_25, LindNT_29, Llorens_29, Lollipop1437_52, Luke_28, Luker_33, Luna22_28, Lunahalos_29, MacKat_30, MacnCheese_30, Malthus_31, Marietta_48, MarkPhew_29, Marshawn_30, McMater_29, Mdavu_25, MeaningOfLife_29, Megsy_29, MerCougar_48, Minos_33, MissDaisy_30, Mitti_30, MrWormie_32, Msay19_36, Murucutumbu_29, Mynx_29, NadineRae_46, NatB6_46, Neoevie_32, Newt_33, Nibb_28, Nikao_25, Niklas_29, Nimi13_32, NosilaM_50, November_28, NovumRegina_46, Nutello_25, OBUpride_28, OmniCritical_30, Oscar_28, Outis_48, Padfoot_29, Padpat_29, Patio_50, Patt_30, Peanam_29, Peel_29, Pharb_28, PhelpsODU_29, Phomeo_45, Phrank_29, Piatt_29, Pixie_29, Pleakley_54, Pokerus_28, Poland_36, Prithvi_29, Pupper_128, QuincyRose_28, Ramen_29, Rapunzel97_29, RedRaider_54, Reptar3000_30, Richo_29, Rosmarinus_29, SCentae_127, SamuelLPlaqson_29, Scarlett_28, Scuba_54, SgtBeansprout_25, Shadow1_28, Shaobing_29, ShedlockHolmes_29, Shelley_32, ShiaSurprise_29, SirPhilip_28, Skog_190, Skysand_49, Slarp_30, Slimphazie_29, Spock_29, StarStruck_48, Sticker17_32, Stinson_30, Sukkupi_47, Sulley_29, Sunflower1121_28, SuperSulley_48, Syra333_29, TBond007_29, TClif_29, Tachez_29, TaiwanKao_30, Teal_32, Tierra_29, TingHuaYa_29, TiniBug_29, Tiri_29, Topper_29, Torres_25, Tracker_46, TreyKay_29, TribbleTrouble_28, TruffulaTree_29, Turuncu_51, Twitch_29, Ubuntu_28, Unicorn_29, Urkel_29, Validus_29, Veliki_29, Webster2_28, WhoseManz_47, Wintermute_30, Wishmaker_28, Woes_32, Ximenita_30, Y10_30, Y2_30, Yndexa_47, YoureAdopted_28, Yuna_30, Yunkel11_29, Zabiza_29, Zavala_29,

Genes that have the "Most Annotated" start but do not call it:

- Krueger_29,

Genes that do not have the "Most Annotated" start:

• Alexphander_23, Aloeri_22, AlpineSix_21, Aminay_27, ArcusAngelus_21, Ardmore_21, Asapag_32, Aubs_21, Awesomesauce_22, Aziz_36, BAKA_39, BENtherdunthat_33, Barnyard_38, Batiatus_21, Beakin_22, BearBQ_31, Blarby_29, Blexus_21, BlueCrab_21, BobaPhett_21, Bobi_23, BodEinwohner17_21, Boomer_22, BoostSeason_27, BotCity_34, Bromden_24, Brushbloom_23, Bubbles123_22, Budski_32, Burwell21_21, BuzzLyseyear_23, ByChance_21, Byougenkin_21, Cabrinians_21, CaptainTrips_22, Chaser_22, Che8_22, Chevrolet_21, ChickenDinner_22, Chuckly_21, Cornucopia_22, Crater_30, DLane_21, DRBy19_21, DS6A_28, DaWorst_23, DaddyRickover_21, Daenerys_21, Dante_21, DeadP_21, Deb65_21, DillTech15_21, DirtMcgirt_22, DismalFunk_27, DismalStressor_27, DoRead_21, DocMcStuffins_22, Donkeykong_21, Doomphist_21, Dorothy_21, DosHalletts_22, DotProduct_21, Doug_22, Douge_22, DrLupo_40, Drago_22, Duke13_39, DyoEdafos_23, Ecliptus_35, Eish_21, EleanorGeorge_21, Emma_21, Empress_22, Enby_22, Eradicator_21, Estes_37, Fancypants_21, FarmResident_22, Fastidio_21, Filuzino_21, Findley_27, Firehouse51_22, Flathead_22, Florinda_21, Frankie_22, FreddyB_21, Fruitloop_21, GUmbe_21, Gaia_24, Galactic_21, Gandolph_21, GardenSalsa_36, GenevaB15_36, Geralt_21, Getalong_33, GigiOuiOui_21, Girafales_22, Girr_21, Gonephishing_37, Gorge_21, Grimmer_22, Guppsters_22, Hades_21, Hamulus_21, Harley_21, Hegedechwinu_22, Heinz_29, Hlubikazi_21, Holliday_32, Horus_32, IMpilo_21, IbOuu_21, Ibhubesi_21, Indlulamithi_30, Inventum_21, IrishSherpFalk_22, JalFarm20_23, James_21, Jarcob_21, Jinglebell_20, Job42_24, JoeyJr_21, Juice456_23, Juniper1_21, Kamaru_32, Karhdo_21, Kenna_31, Kimberlium_23, KingMidas_22, Krakatau_22, KristaRAM_22, Kropertea_22, Kuwabara_31, Latretium_22, Leozinho_22, Leperchaun_21, Leroy_32, LilMoolah_21, LitninMcQueen_31, LittleE_42, LittleShirley_22, Lizziana_21, Llama_21, Llij_21, Lorde_22, LunaBlu_22, Lutum_32, Magritte_25, Magritte_26, Mahavrat_21, Mandlovu_21, Mantra_21, Maravista_21, Marcoliusprime_27, Marker_22, Martik_21, Mattes_21, Melissauren88_21, MilleniumForce_22, Milly_27, Minerva_42, MinionDave_22, Minnie_22, Misha28_22, MisterCuddles_21, Modragons_21, Moonbeam_22, MortyNRick_31, Mova_22, Mozy_22, MrMagoo_36, Mufasa_27, MulchExplorer_24, Mutaforma13_21, Nebkiss_25, Nimbo_21, Nitzel_22, Nivrat_21, NormanBulbieJr_21, ODay_36, Ochi17_21, OfUltron_21, Oksu_22, OldBen_21, OlympiaSaint_21, Omega_41, Optimus_40, Ovechkin_21, OwlsT2W_23, PHappiness_21, PMC_21, Pacc40_21, Periwinkle_34, Phabuloso_31, Phalconet_21, Phasih_22, Phatniss_22, PhesterPhotato_21, Philus_21, Phistory_33, Piper2020_22, Plumbus_22, Poenanya_21, Polka14_22, PopTart_21, Priscilla_21, Quby_22, QuickMath_22, Quico_22, Radiance_21, Ramsey_22, RedBird_21, Rey_36, Rialto_23, RitaG_21, Rita_21, Rockne_21, RockyHorror_22, Royals2015_21, Ruby_21, SG4_21, Saal_21, Sabb_22, Sandalphon_22, Sassafras_21, SassyB_21, Scottish_22, Sebastian_21, Seagreen_22, ShawBrad_32, ShiLan_21, ShowerHandel_21, SiSi_21, SimranZ1_22, Sparkdehlily_21, Spartacus_22, Spikelee_22, Spoonbill_21, StAnnes_21, Stap_22, Starcevich_22, Strobilo_27, Strokeseat_21, Suerte_27, SuperGrey_22, SwagPiggett_21, TDanisky_21, TM4_27, Taj_21, Thimann_29, TootsiePop_22, Tootsieroll_22, Toron_23, Totinger_22, Tweety_22, UncleRicky_24, VRedHorse_21, Veteran_21, Vivum_21, Wachhund_21, Wanda_42, Wee_22, Whatsapiecost_21, Whitney_33, Whouxphf_21, WillSterrel_22, XFactor_21, Yorick_21, Zerg_21, Zizzle_21, ZoeJ_27,

Summary by start number:

Start 50:

- Found in 163 of 533 (30.6%) of genes in pham
- Manual Annotations of this start: 1 of 489
- Called 0.6% of time when present
- Phage (with cluster) where this start called: Duke13_39 (J),

Start 54:

- Found in 2 of 533 (0.4%) of genes in pham
- Manual Annotations of this start: 1 of 489
- Called 50.0% of time when present
- Phage (with cluster) where this start called: Krueger_29 (K6),

Start 58:

- Found in 1 of 533 (0.2%) of genes in pham
- No Manual Annotations of this start.
- Called 100.0% of time when present
- Phage (with cluster) where this start called: Toron_23 (F6),

Start 59:

- Found in 5 of 533 (0.9%) of genes in pham
- Manual Annotations of this start: 1 of 489
- Called 20.0% of time when present
- Phage (with cluster) where this start called: LitninMcQueen_31 (DN1),

Start 60:

- Found in 262 of 533 (49.2%) of genes in pham
- Manual Annotations of this start: 239 of 489
- Called 99.6% of time when present
- Phage (with cluster) where this start called: ActinUp_29 (K1), Adephegia_29 (K1), Adonis_29 (K1), Ageofdapage_29 (K1), AlishaPH_29 (K1), Amelie_25 (K1), Amgine_27 (K6), Amochick_28 (Q), Amohnition_28 (K6), Amymech_28 (Q), Anamika_32 (CS3), Anaya_30 (K1), Angelica_29 (K1), Apocalypse_29 (K1), Asayake_29 (K1), Atiba_29 (K1), BEEEST_29 (K1), BGIlluviae_29 (K1), BaghaKamala_29 (K1), BarrelRoll_29 (K1), Beaver_35 (CS2), Beezoo_29 (K1), Bella96_29 (K1), Belladonna_29 (K1), Bern_31 (K1), Berries_32 (CS3), BiPauneto_48 (CR4), Bianmat_32 (CS3), Binglebops_25 (K1), BirksAndSocks_35 (CS2), Blizzard_29 (K1), Boiiii_29 (K1), Boneham_35 (CS2), Bonum_50 (CR2), Bryler_29 (K6), Buggaboo_48 (CR2), Butterball_35 (CS2), CREW_29 (K1), Cain_29 (K6), CallaLilly_30 (K1), Capricorn_29 (K1), CaseJules_29 (K1), Chancellor_30 (K4), Charianelly_32 (CS3), CheetoDust_29 (K1), Cheetobro_30 (K4), CherryTomatoes_127 (DO), Chris_28 (K1), CinnamonToast_36 (CS2), Clipper_31 (K1), Commandaria_47 (CR2), CrimD_29 (K1), Daegal_29 (Q), Dalmuri_29 (K1), Damp_32 (CS3), DarthP_28 (K6), Dartin_29 (K1), Deby_29 (K1), DeepSoil15_28 (Q), Devera_29 (K1), Dewey_28 (Q), Diabla_34 (CS2), Dole_29 (K1), DrHayes_29 (K1), Durfee_29 (K1), Efra2_29 (K1), Ein37_28 (Q), Ekdilam_26 (K6), Ellie_26 (K6), Emerson_29 (K1), Emianna_46 (CR2), Enkosi_25 (K1), Ennea_53 (CR3), Evanesce_28 (Q), Fefferhead_28 (K6), FelixAlejandro_36 (CS2), Fionnbharth_30 (K4), Flapper_51 (CR1), Float294_49 (CR3), Forge_28 (Q), Foxboro_47 (CR2), Fury_54 (CR5), GRU1_36 (CR1), GTE5_38 (CR1), GTE8_35 (CR2), GalacticEye_32 (CS3), Gancho_27 (Q), Ganymede_30 (K1), Geraldini_29 (K1), Giles_28 (Q), Gravaiillia_28 (Q), GrootJr_48 (CR2), Gsput1_27 (CU2), Guanica15_29 (K1), Guillaume_32 (CS3), HH92_28 (Q), Hadrien_28 (Q), Hail2Pitt_32 (CS3), Hail_28 (Q), Hammy_28 (K6), Harambe_32 (CS3), HedwigODU_29 (K1), Hello_32 (CS3), Homura_29 (K1), HubbaBubba_44 (CR4), Hurricane_30 (K3), Hyperbowlee_29 (K1),

IDyn_47 (CR4), Illumine_29 (K1), Inky_29 (K1), JAWS_29 (K1), JF1_30 (K4), Jams_32 (CS3), Jarvi_29 (K1), Jayhawk_29 (K1), Jeckyll_29 (K1), Jellybones_35 (CS2), Jifall16_45 (CR2), John316_35 (CS2), Jormungandr_32 (CS3), Joy99_29 (K1), Kabluna_50 (CR2), Kaseim_33 (CS3), Keshu_30 (K3), KiSi_28 (K1), KidneyBean_46 (CR2), Kinbote_28 (Q), Kraw_31 (K4), Kurt_46 (CR2), Lahirium_32 (CS3), LastHope_29 (K1), LaterM_29 (K1), LeMond_28 (K1), Lidong_32 (CS3), LilHazelNut_28 (Q), LilPharaoh_25 (K1), LindNT_29 (K1), Llorens_29 (K1), Lollipop1437_52 (CR3), Luke_28 (Q), Luker_33 (CS3), Luna22_28 (Q), Lunahalos_29 (K1), MacKat_30 (K1), MacnCheese_30 (K3), Malthus_31 (K4), Marietta_48 (CR4), MarkPhew_29 (K1), Marshawn_30 (K6), McMater_29 (K1), Mdavu_25 (K1), MeaningOfLife_29 (K1), Megsy_29 (K1), MerCougar_48 (CR2), Minos_33 (CS3), MissDaisy_30 (K4), Mitti_30 (K4), MrWormie_32 (CS3), Msay19_36 (CS2), Murucutumbu_29 (K1), Mynx_29 (K1), NadineRae_46 (CR4), NatB6_46 (CR2), Neoevie_32 (CS3), Newt_33 (CS3), Nibb_28 (K1), Nikao_25 (K1), Niklas_29 (K1), Nimi13_32 (CS3), NosilaM_50 (CR2), November_28 (K6), NovumRegina_46 (CR2), Nutello_25 (K1), OBUpride_28 (Q), OmniCritical_30 (K4), Oscar_28 (K1), Outis_48 (CR2), Padfoot_29 (K1), Padpat_29 (K1), Patio_50 (CR3), Patt_30 (K4), Peanam_29 (K1), Peel_29 (K1), Pharb_28 (K3), PhelpsODU_29 (K6), Phomeo_45 (CR2), Phrank_29 (K6), Piatt_29 (K1), Pixie_29 (K3), Pleakley_54 (CR5), Pokerus_28 (K1), Poland_36 (CS2), Prithvi_29 (K1), Pupper_128 (DO), QuincyRose_28 (K1), Ramen_29 (K1), Rapunzel97_29 (K1), RedRaider_54 (CR3), Reptar3000_30 (K4), Richo_29 (K1), Rosmarinus_29 (K1), SCentae_127 (DO), SamuelLPlaqson_29 (K1), Scarlett_28 (K1), Scuba_54 (CR5), SgtBeansprout_25 (K1), Shadow1_28 (K6), Shaobing_29 (K1), ShedlockHolmes_29 (K3), Shelley_32 (CS3), ShiaSurprise_29 (K1), SirPhilip_28 (K6), Skog_190 (DO), Skysand_49 (CR3), Slarp_30 (K4), Slimphazie_29 (K1), Spock_29 (K1), StarStruck_48 (CR2), Sticker17_32 (CS3), Stinson_30 (K1), Sukkupi_47 (CR4), Sulley_29 (K1), Sunflower1121_28 (K6), SuperSulley_48 (CR2), Syra333_29 (K6), TBond007_29 (K3), TClif_29 (K6), Tachez_29 (K1), TaiwanKao_30 (K1), Teal_32 (CS3), Tierra_29 (K6), TingHuaYa_29 (K1), TiniBug_29 (K1), Tiri_29 (K1), Topper_29 (K1), Torres_25 (K1), Tracker_46 (CR2), TreyKay_29 (K1), TribbleTrouble_28 (K3), TruffulaTree_29 (K1), Turuncu_51 (CR1), Twitch_29 (K1), Ubuntu_28 (Q), Unicorn_29 (K6), Urkel_29 (K1), Validus_29 (K1), Veliki_29 (K1), Webster2_28 (Q), WhoseManz_47 (CR4), Wintermute_30 (K4), Wishmaker_28 (Q), Woes_32 (CS3), Ximenita_30 (K6), Y10_30 (K4), Y2_30 (K4), Yndexa_47 (CR4), YoureAdopted_28 (K1), Yuna_30 (K6), Yunkel11_29 (K1), Zabiza_29 (K1), Zavala_29 (K1),

Start 61:

- Found in 12 of 533 (2.3%) of genes in pham
- Manual Annotations of this start: 12 of 489
- Called 100.0% of time when present
- Phage (with cluster) where this start called: Barnyard_38 (H2), BoostSeason_27 (K2), DismalFunk_27 (K2), DismalStressor_27 (K2), DrLupo_40 (H2), Findley_27 (K2), Marcoliusprime_27 (K2), Milly_27 (K2), Mufasa_27 (K2), Strobilo_27 (K2), TM4_27 (K2), ZoeJ_27 (K2),

Start 62:

- Found in 27 of 533 (5.1%) of genes in pham
- Manual Annotations of this start: 22 of 489
- Called 96.3% of time when present
- Phage (with cluster) where this start called: Asapag_32 (DN1), BENtherdunthat_33 (DN1), BearBQ_31 (DN), BotCity_34 (DN), Budski_32 (DN), Crater_30 (DN3), Ecliptus_35 (DN), Getalong_33 (DN1), Heinz_29 (DY), Holliday_32 (DN1), Horus_32

(DN1), Kamaru_32 (DN1), Kenna_31 (DN1), Kuwabara_31 (DN4), Leroy_32 (DN1), Lutum_32 (DN1), Magritte_25 (singleton), MortyNRick_31 (DN), ODay_36 (DN), Periwinkle_34 (DN1), Phabuloso_31 (DN1), Phistory_33 (DN1), ShawBrad_32 (DN1), Suerte_27 (CZ4), Thimann_29 (CZ4), Whitney_33 (DN1),

Start 63:

- Found in 231 of 533 (43.3%) of genes in pham
- Manual Annotations of this start: 212 of 489
- Called 99.1% of time when present
- Phage (with cluster) where this start called: Alexphander_23 (F1), Aloeri_22 (F1), AlpineSix_21 (F1), Aminay_27 (K7), ArcusAngelus_21 (F1), Ardmore_21 (F1), Aubs_21 (F1), Awesomesauce_22 (F1), Aziz_36 (M2), BAKA_39 (J), Batiatus_21 (F1), Beakin_22 (F1), Blarby_29 (F), Blexus_21 (F1), BlueCrab_21 (F1), BobaPhett_21 (F1), Bobi_23 (F1), BodEinwohner17_21 (F1), Boomer_22 (F1), Bromden_24 (L4), Brushbloom_23 (F1), Bubbles123_22 (F1), Burwell21_21 (F1), BuzzLyseyear_23 (F1), ByChance_21 (F1), Byougenkin_21 (F1), Cabrinians_21 (F1), CaptainTrips_22 (F1), Chaser_22 (L4), Che8_22 (F1), Chevrolet_21 (F1), ChickenDinner_22 (F1), Chuckly_21 (F1), Cornucopia_22 (F1), DLane_21 (F1), DRBy19_21 (F1), DS6A_28 (singleton), DaWorst_23 (F1), DaddyRickover_21 (F1), Daenerys_21 (F1), Dante_21 (F1), DeadP_21 (F1), Deb65_21 (F1), DillTech15_21 (F1), DirtMcgirt_22 (F1), DoRead_21 (F1), DocMcStuffins_22 (F1), Donkeykong_21 (F1), Doomphist_21 (F1), Dorothy_21 (F1), DosHalletts_22 (F1), DotProduct_21 (F1), Doug_22 (F1), Douge_22 (L4), Drago_22 (F1), DyoEdafos_23 (L4), Eish_21 (F1), EleanorGeorge_21 (F1), Emma_21 (F1), Empress_22 (F1), Enby_22 (F1), Eradicator_21 (F1), Estes_37 (M2), Fancypants_21 (F1), FarmResident_22 (L4), Fastidio_21 (F1), Filuzino_21 (F1), Firehouse51_22 (F1), Flathead_22 (F1), Florinda_21 (F1), Frankie_22 (F1), FreddyB_21 (F1), Fruitloop_21 (F1), GUmbie_21 (F1), Gaia_24 (X), Galactic_21 (F1), Gandolph_21 (F1), GardenSalsa_36 (M2), GenevaB15_36 (M2), Geralt_21 (F1), GigiOuiOui_21 (F1), Girafales_22 (F1), Girr_21 (F1), Gonephishing_37 (J), Gorge_21 (F1), Grimmer_22 (F1), Guppsters_22 (F1), Hades_21 (F1), Hamulus_21 (F1), Harley_21 (F1), Hegedechwinu_22 (F1), Hlubikazi_21 (F1), IPpilo_21 (F1), IbOuu_21 (F1), Ibhubesi_21 (F1), Indlulamithi_30 (AC), Inventum_21 (F1), IrishSherpFalk_22 (F1), JalFarm20_23 (F1), James_21 (F1), Jarcob_21 (F1), Jinglebell_20 (F1), Job42_24 (F1), JoeyJr_21 (F1), Juice456_23 (F1), Juniper1_21 (F1), Karhdo_21 (F1), Kimberlium_23 (F1), KingMidas_22 (F1), Krakatau_22 (F1), KristaRAM_22 (F1), Kropertea_22 (L4), Latretium_22 (F1), Leozinho_22 (F1), Leperchaun_21 (F1), LilMoolah_21 (F1), LittleE_42 (J), LittleShirley_22 (F1), Lizziana_21 (F1), Llama_21 (F1), Llij_21 (F1), Lorde_22 (F1), LunaBlu_22 (F1), Mahavrat_21 (F1), Mandlovu_21 (F1), Mantra_21 (F1), Maravista_21 (F1), Marker_22 (F1), Martik_21 (F1), Mattes_21 (F1), Melissauren88_21 (F1), MilleniumForce_22 (F1), Minerva_42 (J), MinionDave_22 (F1), Minnie_22 (F1), Misha28_22 (F1), MisterCuddles_21 (F1), Modragons_21 (F1), Moonbeam_22 (F1), Mova_22 (F1), Mozy_22 (F1), MrMagoo_36 (M2), MulchExplorer_24 (F1), Mutaforma13_21 (F1), Nebkiss_25 (X), Nimbo_21 (F1), Nitzel_22 (F1), Nivrat_21 (F1), NormanBulbieJr_21 (F1), Ochi17_21 (F1), OfUltron_21 (F1), Oksu_22 (F1), OldBen_21 (F1), OlympiaSaint_21 (F1), Omega_41 (J), Optimus_40 (J), Ovechkin_21 (F1), OwlsT2W_23 (F1), PHappiness_21 (F1), PMC_21 (F1), Pacc40_21 (F1), Phalconet_21 (F1), Phasih_22 (F1), Phatniss_22 (F1), PhesterPhotato_21 (F1), Philus_21 (F1), Piper2020_22 (F1), Plumbus_22 (F1), Poenanya_21 (F1), Polka14_22 (F1), PopTart_21 (F1), Priscilla_21 (F1), Quby_22 (L4), QuickMath_22 (F1), Quico_22 (F1), Radiance_21 (F1), Ramsey_22 (F1), RedBird_21 (F1), Rey_36 (M2), Rialto_23 (F1), RitaG_21 (F1), Rita_21 (F1), Rockne_21 (F1), RockyHorror_22 (F1), Royals2015_21 (F1), Ruby_21 (F1), SG4_21

(F1), Saal_21 (F1), Sabb_22 (F1), Sandalphon_22 (F1), Sassafras_21 (F1), SassyB_21 (F1), Scottish_22 (F1), Seabastian_21 (F1), Seagreen_22 (F1), ShiLan_21 (F1), ShowerHandel_21 (F1), SiSi_21 (F1), SimranZ1_22 (F1), Sparkdehlily_21 (F1), Spartacus_22 (F1), Spikelee_22 (F1), Spoonbill_21 (F1), StAnnes_21 (F1), Stap_22 (F1), Starceвич_22 (F1), Strokeseat_21 (F1), SuperGrey_22 (F1), SwagPigglett_21 (F1), TDanisky_21 (F1), Taj_21 (F1), TootsiePop_22 (F1), Tootsieroll_22 (F1), Totinger_22 (F1), Tweety_22 (F1), UncleRicky_24 (F1), VRedHorse_21 (F1), Veteran_21 (F1), Vivum_21 (F1), Wachhund_21 (F1), Wanda_42 (J), Wee_22 (F1), Whatsapiecost_21 (F1), Whouxphf_21 (F1), WillSterrel_22 (F1), XFactor_21 (F1), Yorick_21 (F1), Zerg_21 (F1), Zizzle_21 (F1),

Start 119:

- Found in 1 of 533 (0.2%) of genes in pham
- Manual Annotations of this start: 1 of 489
- Called 100.0% of time when present
- Phage (with cluster) where this start called: Magritte_26 (singleton),

Summary by clusters:

There are 32 clusters represented in this pham: DN, DO, singleton, K4, CZ4, K3, K2, K1, K7, K6, M2, CU2, F, DN4, DN1, DN3, CS3, CS2, AC, CR3, J, Q, L4, DY, X, CR2, F1, CR1, CR4, F6, CR5, H2,

Info for manual annotations of cluster AC:

- Start number 63 was manually annotated 1 time for cluster AC.

Info for manual annotations of cluster CR1:

- Start number 60 was manually annotated 2 times for cluster CR1.

Info for manual annotations of cluster CR2:

- Start number 60 was manually annotated 18 times for cluster CR2.

Info for manual annotations of cluster CR3:

- Start number 60 was manually annotated 5 times for cluster CR3.

Info for manual annotations of cluster CR4:

- Start number 60 was manually annotated 7 times for cluster CR4.

Info for manual annotations of cluster CR5:

- Start number 60 was manually annotated 2 times for cluster CR5.

Info for manual annotations of cluster CS2:

- Start number 60 was manually annotated 10 times for cluster CS2.

Info for manual annotations of cluster CS3:

- Start number 60 was manually annotated 24 times for cluster CS3.

Info for manual annotations of cluster CZ4:

- Start number 62 was manually annotated 2 times for cluster CZ4.

Info for manual annotations of cluster DN:

- Start number 62 was manually annotated 4 times for cluster DN.

Info for manual annotations of cluster DN1:

- Start number 59 was manually annotated 1 time for cluster DN1.
- Start number 62 was manually annotated 13 times for cluster DN1.

Info for manual annotations of cluster DN3:

- Start number 62 was manually annotated 1 time for cluster DN3.

Info for manual annotations of cluster DN4:

- Start number 62 was manually annotated 1 time for cluster DN4.

Info for manual annotations of cluster DO:

- Start number 60 was manually annotated 4 times for cluster DO.

Info for manual annotations of cluster F1:

- Start number 63 was manually annotated 191 times for cluster F1.

Info for manual annotations of cluster H2:

- Start number 61 was manually annotated 2 times for cluster H2.

Info for manual annotations of cluster J:

- Start number 50 was manually annotated 1 time for cluster J.
- Start number 63 was manually annotated 6 times for cluster J.

Info for manual annotations of cluster K1:

- Start number 60 was manually annotated 102 times for cluster K1.

Info for manual annotations of cluster K2:

- Start number 61 was manually annotated 10 times for cluster K2.

Info for manual annotations of cluster K3:

- Start number 60 was manually annotated 8 times for cluster K3.

Info for manual annotations of cluster K4:

- Start number 60 was manually annotated 14 times for cluster K4.

Info for manual annotations of cluster K6:

- Start number 54 was manually annotated 1 time for cluster K6.
- Start number 60 was manually annotated 21 times for cluster K6.

Info for manual annotations of cluster K7:

- Start number 63 was manually annotated 1 time for cluster K7.

Info for manual annotations of cluster L4:

- Start number 63 was manually annotated 4 times for cluster L4.

Info for manual annotations of cluster M2:

- Start number 63 was manually annotated 6 times for cluster M2.

Info for manual annotations of cluster Q:

- Start number 60 was manually annotated 22 times for cluster Q.

Info for manual annotations of cluster X:

- Start number 63 was manually annotated 2 times for cluster X.

Gene Information:

Gene: ActinUp_29 Start: 24422, Stop: 24793, Start Num: 60

Candidate Starts for ActinUp_29:

(Start: 60 @24422 has 239 MA's), (82, 24584), (92, 24638), (96, 24656), (114, 24758),

Gene: Adephagia_29 Start: 24419, Stop: 24790, Start Num: 60

Candidate Starts for Adephagia_29:

(Start: 60 @24419 has 239 MA's), (82, 24581), (92, 24635), (96, 24653), (114, 24755),

Gene: Adonis_29 Start: 24425, Stop: 24796, Start Num: 60

Candidate Starts for Adonis_29:

(Start: 60 @24425 has 239 MA's), (82, 24587), (92, 24641), (96, 24659), (114, 24761),

Gene: Ageofdapage_29 Start: 24367, Stop: 24738, Start Num: 60

Candidate Starts for Ageofdapage_29:

(Start: 60 @24367 has 239 MA's), (82, 24529), (92, 24583), (94, 24589), (96, 24601), (101, 24622), (114, 24703),

Gene: Alexphander_23 Start: 23524, Stop: 23865, Start Num: 63

Candidate Starts for Alexphander_23:

(8, 23200), (Start: 50 @23470 has 1 MA's), (Start: 63 @23524 has 212 MA's), (75, 23593), (89, 23707), (91, 23719), (96, 23737), (107, 23809), (109, 23815), (114, 23842),

Gene: AlishaPH_29 Start: 24412, Stop: 24783, Start Num: 60

Candidate Starts for AlishaPH_29:

(Start: 60 @24412 has 239 MA's), (82, 24574), (92, 24628), (96, 24646), (114, 24748),

Gene: Aloeri_22 Start: 22871, Stop: 23212, Start Num: 63

Candidate Starts for Aloeri_22:

(20, 22673), (21, 22676), (22, 22682), (23, 22685), (27, 22709), (53, 22823), (Start: 63 @22871 has 212 MA's), (75, 22940), (89, 23054), (96, 23084), (107, 23156), (109, 23162), (114, 23189),

Gene: AlpineSix_21 Start: 23238, Stop: 23579, Start Num: 63

Candidate Starts for AlpineSix_21:

(Start: 63 @23238 has 212 MA's), (91, 23433), (96, 23451), (109, 23529),

Gene: Amelie_25 Start: 23944, Stop: 24318, Start Num: 60

Candidate Starts for Amelie_25:

(Start: 60 @23944 has 239 MA's), (67, 23980), (73, 24007), (88, 24145), (111, 24274), (114, 24283),

Gene: Amgine_27 Start: 24446, Stop: 24817, Start Num: 60

Candidate Starts for Amgine_27:

(Start: 60 @24446 has 239 MA's), (66, 24476), (69, 24491), (82, 24608), (92, 24662), (94, 24668),

Gene: Aminay_27 Start: 24925, Stop: 25269, Start Num: 63

Candidate Starts for Aminay_27:

(18, 24721), (32, 24790), (33, 24793), (35, 24796), (43, 24826), (Start: 63 @24925 has 212 MA's), (84, 25096), (99, 25153),

Gene: Amochick_28 Start: 24639, Stop: 24995, Start Num: 60

Candidate Starts for Amochick_28:

(Start: 60 @24639 has 239 MA's), (71, 24690), (75, 24708), (77, 24747), (81, 24798), (82, 24801), (87, 24819), (90, 24834), (101, 24879), (105, 24915), (107, 24927), (114, 24963),

Gene: Amohnition_28 Start: 24876, Stop: 25247, Start Num: 60

Candidate Starts for Amohnition_28:

(Start: 60 @24876 has 239 MA's), (82, 25038), (92, 25092), (94, 25098), (107, 25182),

Gene: Amymech_28 Start: 24633, Stop: 24989, Start Num: 60

Candidate Starts for Amymech_28:

(Start: 60 @24633 has 239 MA's), (71, 24684), (75, 24702), (77, 24741), (81, 24792), (82, 24795), (87, 24813), (90, 24828), (101, 24873), (105, 24909), (107, 24921), (114, 24957),

Gene: Anamika_32 Start: 39535, Stop: 39900, Start Num: 60

Candidate Starts for Anamika_32:

(Start: 60 @39535 has 239 MA's), (66, 39565), (71, 39586), (88, 39727), (90, 39739), (92, 39745), (102, 39802), (103, 39808), (114, 39874), (118, 39892),

Gene: Anaya_30 Start: 24438, Stop: 24809, Start Num: 60

Candidate Starts for Anaya_30:

(Start: 60 @24438 has 239 MA's), (82, 24600), (92, 24654), (96, 24672), (114, 24774),

Gene: Angelica_29 Start: 24387, Stop: 24758, Start Num: 60

Candidate Starts for Angelica_29:

(Start: 60 @24387 has 239 MA's), (82, 24549), (92, 24603), (96, 24621), (114, 24723),

Gene: Apocalypse_29 Start: 24390, Stop: 24761, Start Num: 60

Candidate Starts for Apocalypse_29:

(Start: 60 @24390 has 239 MA's), (82, 24552), (92, 24606), (96, 24624), (114, 24726),

Gene: ArcusAngelus_21 Start: 23039, Stop: 23380, Start Num: 63

Candidate Starts for ArcusAngelus_21:

(8, 22715), (Start: 50 @22985 has 1 MA's), (Start: 63 @23039 has 212 MA's), (91, 23234), (96, 23252), (107, 23324), (109, 23330), (114, 23357), (117, 23372),

Gene: Ardmore_21 Start: 23042, Stop: 23383, Start Num: 63

Candidate Starts for Ardmore_21:

(Start: 50 @22988 has 1 MA's), (Start: 63 @23042 has 212 MA's), (75, 23111), (91, 23237), (96, 23255), (107, 23327), (109, 23333), (114, 23360),

Gene: Asapag_32 Start: 24456, Stop: 24800, Start Num: 62

Candidate Starts for Asapag_32:

(Start: 62 @24456 has 22 MA's), (64, 24477), (77, 24567), (84, 24633), (89, 24648), (91, 24660), (95, 24675), (99, 24690), (104, 24729), (107, 24750), (113, 24774),

Gene: Asayake_29 Start: 24453, Stop: 24824, Start Num: 60

Candidate Starts for Asayake_29:

(Start: 60 @24453 has 239 MA's), (82, 24615), (92, 24669), (114, 24789),

Gene: Atiba_29 Start: 24382, Stop: 24753, Start Num: 60

Candidate Starts for Atiba_29:

(Start: 60 @24382 has 239 MA's), (82, 24544), (92, 24598), (96, 24616), (114, 24718),

Gene: Aubs_21 Start: 23158, Stop: 23499, Start Num: 63

Candidate Starts for Aubs_21:

(8, 22834), (Start: 50 @23104 has 1 MA's), (Start: 63 @23158 has 212 MA's), (75, 23227), (91, 23353), (96, 23371), (107, 23443), (109, 23449), (114, 23476),

Gene: Awesomesauce_22 Start: 22864, Stop: 23205, Start Num: 63

Candidate Starts for Awesomesauce_22:

(Start: 63 @22864 has 212 MA's), (91, 23059), (96, 23077), (107, 23149), (109, 23155), (114, 23182),

Gene: Aziz_36 Start: 28984, Stop: 29328, Start Num: 63

Candidate Starts for Aziz_36:

(Start: 63 @28984 has 212 MA's), (89, 29170),

Gene: BAKA_39 Start: 35511, Stop: 35852, Start Num: 63

Candidate Starts for BAKA_39:

(8, 35187), (Start: 50 @35457 has 1 MA's), (Start: 63 @35511 has 212 MA's), (75, 35580), (91, 35706), (96, 35724), (107, 35796), (109, 35802), (114, 35829),

Gene: BEEST_29 Start: 24453, Stop: 24824, Start Num: 60

Candidate Starts for BEEST_29:

(Start: 60 @24453 has 239 MA's), (82, 24615), (92, 24669), (114, 24789),

Gene: BENtherdunthat_33 Start: 24021, Stop: 24365, Start Num: 62

Candidate Starts for BENtherdunthat_33:

(Start: 62 @24021 has 22 MA's), (64, 24042), (77, 24132), (84, 24198), (89, 24213), (99, 24255), (104, 24294), (107, 24315), (113, 24339),

Gene: BGlluviae_29 Start: 24453, Stop: 24824, Start Num: 60

Candidate Starts for BGlluviae_29:

(Start: 60 @24453 has 239 MA's), (82, 24615), (92, 24669), (96, 24687), (114, 24789),

Gene: BaghaKamala_29 Start: 24382, Stop: 24753, Start Num: 60

Candidate Starts for BaghaKamala_29:

(Start: 60 @24382 has 239 MA's), (82, 24544), (92, 24598), (96, 24616), (114, 24718),

Gene: Barnyard_38 Start: 30926, Stop: 31300, Start Num: 61

Candidate Starts for Barnyard_38:

(Start: 61 @30926 has 12 MA's), (70, 30974), (74, 30989), (79, 31073), (87, 31124), (93, 31148), (101, 31184), (109, 31241), (114, 31268),

Gene: BarrelRoll_29 Start: 24405, Stop: 24776, Start Num: 60

Candidate Starts for BarrelRoll_29:

(Start: 60 @24405 has 239 MA's), (82, 24567), (92, 24621), (96, 24639), (114, 24741),

Gene: Batiatus_21 Start: 23049, Stop: 23390, Start Num: 63

Candidate Starts for Batiatus_21:

(8, 22725), (Start: 50 @22995 has 1 MA's), (Start: 63 @23049 has 212 MA's), (75, 23118), (91, 23244), (96, 23262), (107, 23334), (109, 23340), (114, 23367),

Gene: Beakin_22 Start: 22850, Stop: 23191, Start Num: 63

Candidate Starts for Beakin_22:

(8, 22526), (Start: 50 @22796 has 1 MA's), (Start: 63 @22850 has 212 MA's), (75, 22919), (91, 23045), (96, 23063), (107, 23135), (109, 23141), (114, 23168),

Gene: BearBQ_31 Start: 25242, Stop: 25586, Start Num: 62

Candidate Starts for BearBQ_31:

(Start: 62 @25242 has 22 MA's), (64, 25263), (77, 25353), (84, 25419), (89, 25434), (91, 25446), (95, 25461), (99, 25476), (104, 25515), (107, 25536), (113, 25560),

Gene: Beaver_35 Start: 39015, Stop: 39380, Start Num: 60

Candidate Starts for Beaver_35:

(Start: 60 @39015 has 239 MA's), (75, 39084), (87, 39204), (90, 39219),

Gene: Beezoo_29 Start: 24430, Stop: 24801, Start Num: 60

Candidate Starts for Beezoo_29:

(Start: 60 @24430 has 239 MA's), (82, 24592), (92, 24646), (114, 24766),

Gene: Bella96_29 Start: 24361, Stop: 24732, Start Num: 60

Candidate Starts for Bella96_29:

(Start: 60 @24361 has 239 MA's), (80, 24517), (82, 24523), (92, 24577), (101, 24616), (114, 24697),

Gene: Belladonna_29 Start: 24453, Stop: 24824, Start Num: 60

Candidate Starts for Belladonna_29:

(Start: 60 @24453 has 239 MA's), (82, 24615), (92, 24669), (96, 24687), (114, 24789),

Gene: Bern_31 Start: 24373, Stop: 24744, Start Num: 60

Candidate Starts for Bern_31:

(Start: 60 @24373 has 239 MA's), (82, 24535), (92, 24589), (96, 24607), (101, 24628), (105, 24667), (114, 24709),

Gene: Berries_32 Start: 39505, Stop: 39870, Start Num: 60

Candidate Starts for Berries_32:

(Start: 60 @39505 has 239 MA's), (66, 39535), (71, 39556), (88, 39697), (90, 39709), (92, 39715), (102, 39772), (103, 39778), (114, 39844), (118, 39862),

Gene: BiPauneto_48 Start: 35826, Stop: 36170, Start Num: 60

Candidate Starts for BiPauneto_48:

(3, 35349), (4, 35388), (5, 35439), (16, 35568), (29, 35679), (40, 35721), (45, 35739), (52, 35784), (Start: 60 @35826 has 239 MA's), (87, 35997), (98, 36042),

Gene: Bianmat_32 Start: 39545, Stop: 39910, Start Num: 60

Candidate Starts for Bianmat_32:

(Start: 60 @39545 has 239 MA's), (66, 39575), (71, 39596), (88, 39737), (90, 39749), (92, 39755), (102, 39812), (103, 39818), (114, 39884), (118, 39902),

Gene: Biglebops_25 Start: 23944, Stop: 24318, Start Num: 60

Candidate Starts for Biglebops_25:

(Start: 60 @23944 has 239 MA's), (67, 23980), (73, 24007), (88, 24145), (111, 24274), (114, 24283),

Gene: BirksAndSocks_35 Start: 38989, Stop: 39354, Start Num: 60
Candidate Starts for BirksAndSocks_35:
(Start: 60 @38989 has 239 MA's), (88, 39181), (90, 39193), (92, 39199),

Gene: Blarby_29 Start: 23274, Stop: 23615, Start Num: 63
Candidate Starts for Blarby_29:
(8, 22950), (Start: 50 @23220 has 1 MA's), (Start: 63 @23274 has 212 MA's), (75, 23343), (91, 23469),
(96, 23487), (107, 23559), (109, 23565), (114, 23592),

Gene: Blexus_21 Start: 23187, Stop: 23528, Start Num: 63
Candidate Starts for Blexus_21:
(8, 22863), (Start: 50 @23133 has 1 MA's), (Start: 63 @23187 has 212 MA's), (75, 23256), (91, 23382),
(96, 23400), (107, 23472), (109, 23478), (114, 23505),

Gene: Blizzard_29 Start: 24453, Stop: 24824, Start Num: 60
Candidate Starts for Blizzard_29:
(Start: 60 @24453 has 239 MA's), (82, 24615), (92, 24669), (114, 24789),

Gene: BlueCrab_21 Start: 23165, Stop: 23506, Start Num: 63
Candidate Starts for BlueCrab_21:
(Start: 63 @23165 has 212 MA's), (75, 23234), (91, 23360), (96, 23378), (107, 23450), (109, 23456),
(114, 23483),

Gene: BobaPhett_21 Start: 23034, Stop: 23375, Start Num: 63
Candidate Starts for BobaPhett_21:
(24, 22848), (Start: 50 @22974 has 1 MA's), (Start: 63 @23034 has 212 MA's), (75, 23103), (89,
23217), (103, 23289), (109, 23325), (116, 23364),

Gene: Bobi_23 Start: 23588, Stop: 23929, Start Num: 63
Candidate Starts for Bobi_23:
(8, 23264), (Start: 50 @23534 has 1 MA's), (Start: 63 @23588 has 212 MA's), (75, 23657), (91, 23783),
(96, 23801), (107, 23873), (109, 23879), (114, 23906),

Gene: BodEinwohner17_21 Start: 23170, Stop: 23511, Start Num: 63
Candidate Starts for BodEinwohner17_21:
(8, 22846), (Start: 50 @23116 has 1 MA's), (Start: 63 @23170 has 212 MA's), (75, 23239), (91, 23365),
(96, 23383), (107, 23455), (109, 23461), (114, 23488),

Gene: Boiiii_29 Start: 24455, Stop: 24826, Start Num: 60
Candidate Starts for Boiiii_29:
(Start: 60 @24455 has 239 MA's), (82, 24617), (92, 24671), (114, 24791),

Gene: Boneham_35 Start: 38988, Stop: 39353, Start Num: 60
Candidate Starts for Boneham_35:
(Start: 60 @38988 has 239 MA's), (88, 39180), (90, 39192), (92, 39198),

Gene: Bonum_50 Start: 36974, Stop: 37318, Start Num: 60
Candidate Starts for Bonum_50:
(Start: 60 @36974 has 239 MA's), (86, 37142), (88, 37148), (105, 37241),

Gene: Boomer_22 Start: 22813, Stop: 23154, Start Num: 63
Candidate Starts for Boomer_22:

(Start: 50 @22759 has 1 MA's), (Start: 63 @22813 has 212 MA's), (75, 22882), (89, 22996), (96, 23026), (107, 23098), (109, 23104), (114, 23131),

Gene: BoostSeason_27 Start: 22730, Stop: 23098, Start Num: 61

Candidate Starts for BoostSeason_27:

(57, 22694), (Start: 61 @22730 has 12 MA's), (73, 22790), (75, 22799), (79, 22871), (82, 22892), (94, 22952), (101, 22985),

Gene: BotCity_34 Start: 24022, Stop: 24366, Start Num: 62

Candidate Starts for BotCity_34:

(Start: 62 @24022 has 22 MA's), (64, 24043), (77, 24133), (84, 24199), (89, 24214), (99, 24256), (104, 24295), (107, 24316), (113, 24340),

Gene: Bromden_24 Start: 23226, Stop: 23567, Start Num: 63

Candidate Starts for Bromden_24:

(Start: 63 @23226 has 212 MA's), (89, 23409), (99, 23454), (107, 23511), (113, 23541),

Gene: Brushbloom_23 Start: 22882, Stop: 23223, Start Num: 63

Candidate Starts for Brushbloom_23:

(8, 22558), (Start: 50 @22828 has 1 MA's), (Start: 63 @22882 has 212 MA's), (75, 22951), (91, 23077), (96, 23095), (107, 23167), (109, 23173), (114, 23200),

Gene: Bryler_29 Start: 23849, Stop: 24205, Start Num: 60

Candidate Starts for Bryler_29:

(Start: 60 @23849 has 239 MA's), (73, 23909), (81, 24008), (92, 24050), (96, 24068), (101, 24089), (114, 24170),

Gene: Bubbles123_22 Start: 23713, Stop: 24054, Start Num: 63

Candidate Starts for Bubbles123_22:

(8, 23389), (Start: 50 @23659 has 1 MA's), (Start: 63 @23713 has 212 MA's), (75, 23782), (91, 23908), (96, 23926), (107, 23998), (109, 24004),

Gene: Budski_32 Start: 24537, Stop: 24881, Start Num: 62

Candidate Starts for Budski_32:

(Start: 62 @24537 has 22 MA's), (64, 24558), (77, 24648), (84, 24714), (89, 24729), (95, 24756), (99, 24771), (104, 24810), (107, 24831), (113, 24855),

Gene: Buggaboo_48 Start: 37453, Stop: 37797, Start Num: 60

Candidate Starts for Buggaboo_48:

(Start: 60 @37453 has 239 MA's), (68, 37495), (88, 37627), (90, 37639), (101, 37684), (105, 37720), (116, 37777),

Gene: Burwell21_21 Start: 23068, Stop: 23409, Start Num: 63

Candidate Starts for Burwell21_21:

(24, 22882), (Start: 50 @23008 has 1 MA's), (Start: 63 @23068 has 212 MA's), (75, 23137), (89, 23251), (103, 23323), (109, 23359), (116, 23398),

Gene: Butterball_35 Start: 38988, Stop: 39353, Start Num: 60

Candidate Starts for Butterball_35:

(Start: 60 @38988 has 239 MA's), (88, 39180), (90, 39192), (92, 39198),

Gene: BuzzLyseyear_23 Start: 23392, Stop: 23733, Start Num: 63

Candidate Starts for BuzzLyseyear_23:

(8, 23068), (Start: 50 @23338 has 1 MA's), (Start: 63 @23392 has 212 MA's), (75, 23461), (91, 23587), (96, 23605), (107, 23677), (109, 23683), (114, 23710),

Gene: ByChance_21 Start: 23045, Stop: 23386, Start Num: 63

Candidate Starts for ByChance_21:

(24, 22859), (Start: 50 @22985 has 1 MA's), (Start: 63 @23045 has 212 MA's), (75, 23114), (89, 23228), (103, 23300), (109, 23336), (116, 23375),

Gene: Byougenkin_21 Start: 23013, Stop: 23354, Start Num: 63

Candidate Starts for Byougenkin_21:

(8, 22689), (Start: 50 @22959 has 1 MA's), (Start: 63 @23013 has 212 MA's), (75, 23082), (91, 23208), (96, 23226), (107, 23298), (109, 23304), (114, 23331),

Gene: CREW_29 Start: 24453, Stop: 24824, Start Num: 60

Candidate Starts for CREW_29:

(Start: 60 @24453 has 239 MA's), (82, 24615), (92, 24669), (96, 24687), (114, 24789),

Gene: Cabrinians_21 Start: 23062, Stop: 23403, Start Num: 63

Candidate Starts for Cabrinians_21:

(24, 22876), (Start: 50 @23002 has 1 MA's), (Start: 63 @23062 has 212 MA's), (75, 23131), (89, 23245), (103, 23317), (109, 23353), (116, 23392),

Gene: Cain_29 Start: 23837, Stop: 24193, Start Num: 60

Candidate Starts for Cain_29:

(Start: 60 @23837 has 239 MA's), (73, 23897), (81, 23996), (92, 24038), (96, 24056), (101, 24077), (114, 24158),

Gene: CallaLilly_30 Start: 24376, Stop: 24747, Start Num: 60

Candidate Starts for CallaLilly_30:

(Start: 60 @24376 has 239 MA's), (82, 24538), (92, 24592), (96, 24610), (114, 24712),

Gene: Capricorn_29 Start: 24453, Stop: 24824, Start Num: 60

Candidate Starts for Capricorn_29:

(Start: 60 @24453 has 239 MA's), (82, 24615), (92, 24669), (96, 24687), (114, 24789),

Gene: CaptainTrips_22 Start: 23693, Stop: 24034, Start Num: 63

Candidate Starts for CaptainTrips_22:

(8, 23369), (Start: 50 @23639 has 1 MA's), (Start: 63 @23693 has 212 MA's), (75, 23762), (91, 23888), (96, 23906), (107, 23978), (109, 23984), (114, 24011),

Gene: CaseJules_29 Start: 24453, Stop: 24824, Start Num: 60

Candidate Starts for CaseJules_29:

(Start: 60 @24453 has 239 MA's), (82, 24615), (92, 24669), (114, 24789),

Gene: Chancellor_30 Start: 25622, Stop: 25999, Start Num: 60

Candidate Starts for Chancellor_30:

(Start: 60 @25622 has 239 MA's), (75, 25694), (82, 25787), (90, 25835), (94, 25847), (101, 25880), (103, 25904), (107, 25931), (111, 25952), (114, 25961),

Gene: Charianelly_32 Start: 39255, Stop: 39620, Start Num: 60

Candidate Starts for Charianelly_32:

(Start: 60 @39255 has 239 MA's), (66, 39285), (71, 39306), (88, 39447), (90, 39459), (92, 39465), (102, 39522), (103, 39528), (114, 39594), (118, 39612),

Gene: Chaser_22 Start: 22637, Stop: 22978, Start Num: 63
Candidate Starts for Chaser_22:
(Start: 63 @22637 has 212 MA's), (89, 22820), (99, 22865), (113, 22952),

Gene: Che8_22 Start: 23027, Stop: 23368, Start Num: 63
Candidate Starts for Che8_22:
(Start: 50 @22973 has 1 MA's), (Start: 63 @23027 has 212 MA's), (91, 23222), (96, 23240), (107, 23312), (109, 23318), (114, 23345), (117, 23360),

Gene: CheetoDust_29 Start: 24430, Stop: 24801, Start Num: 60
Candidate Starts for CheetoDust_29:
(Start: 60 @24430 has 239 MA's), (82, 24592), (92, 24646), (96, 24664), (114, 24766),

Gene: Cheetobro_30 Start: 25619, Stop: 25996, Start Num: 60
Candidate Starts for Cheetobro_30:
(Start: 60 @25619 has 239 MA's), (75, 25691), (82, 25784), (90, 25832), (94, 25844), (101, 25877), (103, 25901), (107, 25928), (111, 25949), (114, 25958),

Gene: CherryTomatoes_127 Start: 83526, Stop: 83885, Start Num: 60
Candidate Starts for CherryTomatoes_127:
(Start: 60 @83526 has 239 MA's), (90, 83730), (97, 83757), (98, 83760),

Gene: Chevrolet_21 Start: 23039, Stop: 23380, Start Num: 63
Candidate Starts for Chevrolet_21:
(8, 22715), (Start: 50 @22985 has 1 MA's), (Start: 63 @23039 has 212 MA's), (91, 23234), (96, 23252), (107, 23324), (109, 23330), (114, 23357), (117, 23372),

Gene: ChickenDinner_22 Start: 22871, Stop: 23212, Start Num: 63
Candidate Starts for ChickenDinner_22:
(20, 22673), (21, 22676), (22, 22682), (23, 22685), (27, 22709), (53, 22823), (Start: 63 @22871 has 212 MA's), (75, 22940), (89, 23054), (96, 23084), (107, 23156), (109, 23162), (114, 23189),

Gene: Chris_28 Start: 23689, Stop: 24063, Start Num: 60
Candidate Starts for Chris_28:
(Start: 60 @23689 has 239 MA's), (75, 23761), (82, 23854), (101, 23947), (117, 24043),

Gene: Chuckly_21 Start: 23164, Stop: 23505, Start Num: 63
Candidate Starts for Chuckly_21:
(Start: 50 @23110 has 1 MA's), (Start: 63 @23164 has 212 MA's), (75, 23233), (91, 23359), (96, 23377), (107, 23449), (109, 23455), (114, 23482),

Gene: CinnamonToast_36 Start: 39042, Stop: 39407, Start Num: 60
Candidate Starts for CinnamonToast_36:
(Start: 60 @39042 has 239 MA's), (88, 39234), (90, 39246), (92, 39252),

Gene: Clipper_31 Start: 24430, Stop: 24801, Start Num: 60
Candidate Starts for Clipper_31:
(Start: 60 @24430 has 239 MA's), (82, 24592), (92, 24646), (96, 24664), (114, 24766),

Gene: Commandaria_47 Start: 37436, Stop: 37780, Start Num: 60
Candidate Starts for Commandaria_47:
(Start: 60 @37436 has 239 MA's), (80, 37583), (87, 37607), (98, 37652),

Gene: Cornucopia_22 Start: 23036, Stop: 23377, Start Num: 63

Candidate Starts for Cornucopia_22:

(8, 22712), (Start: 50 @22982 has 1 MA's), (Start: 63 @23036 has 212 MA's), (75, 23105), (91, 23231), (96, 23249), (107, 23321), (109, 23327), (114, 23354), (117, 23369),

Gene: Crater_30 Start: 23990, Stop: 24334, Start Num: 62

Candidate Starts for Crater_30:

(Start: 62 @23990 has 22 MA's), (64, 24011), (77, 24101), (84, 24167), (89, 24182), (95, 24209), (99, 24224), (104, 24263), (107, 24284), (113, 24308),

Gene: CrimD_29 Start: 24389, Stop: 24760, Start Num: 60

Candidate Starts for CrimD_29:

(Start: 60 @24389 has 239 MA's), (82, 24551), (92, 24605), (96, 24623), (114, 24725),

Gene: DLane_21 Start: 22987, Stop: 23328, Start Num: 63

Candidate Starts for DLane_21:

(8, 22663), (Start: 50 @22933 has 1 MA's), (Start: 63 @22987 has 212 MA's), (75, 23056), (91, 23182), (96, 23200), (107, 23272), (109, 23278), (114, 23305),

Gene: DRBy19_21 Start: 23023, Stop: 23364, Start Num: 63

Candidate Starts for DRBy19_21:

(Start: 63 @23023 has 212 MA's), (75, 23092), (91, 23218), (96, 23236), (107, 23308), (109, 23314),

Gene: DS6A_28 Start: 24667, Stop: 25017, Start Num: 63

Candidate Starts for DS6A_28:

(Start: 63 @24667 has 212 MA's), (74, 24730), (84, 24844), (89, 24859), (91, 24871), (108, 24964), (109, 24967), (114, 24994),

Gene: DaWorst_23 Start: 23531, Stop: 23872, Start Num: 63

Candidate Starts for DaWorst_23:

(8, 23207), (Start: 50 @23477 has 1 MA's), (Start: 63 @23531 has 212 MA's), (75, 23600), (91, 23726), (96, 23744), (107, 23816), (109, 23822), (114, 23849), (117, 23864),

Gene: DaddyRickover_21 Start: 23169, Stop: 23510, Start Num: 63

Candidate Starts for DaddyRickover_21:

(8, 22845), (Start: 50 @23115 has 1 MA's), (Start: 63 @23169 has 212 MA's), (75, 23238), (91, 23364), (96, 23382), (107, 23454), (109, 23460), (114, 23487), (117, 23502),

Gene: Daegal_29 Start: 24927, Stop: 25283, Start Num: 60

Candidate Starts for Daegal_29:

(Start: 60 @24927 has 239 MA's), (71, 24978), (75, 24996), (77, 25035), (81, 25086), (82, 25089), (87, 25107), (90, 25122), (101, 25167), (105, 25203), (107, 25215), (114, 25251),

Gene: Daenerys_21 Start: 22997, Stop: 23338, Start Num: 63

Candidate Starts for Daenerys_21:

(Start: 63 @22997 has 212 MA's), (75, 23066), (91, 23192), (96, 23210), (107, 23282), (109, 23288), (114, 23315),

Gene: Dalmuri_29 Start: 24453, Stop: 24824, Start Num: 60

Candidate Starts for Dalmuri_29:

(Start: 60 @24453 has 239 MA's), (82, 24615), (92, 24669), (96, 24687), (114, 24789),

Gene: Damp_32 Start: 38419, Stop: 38784, Start Num: 60
Candidate Starts for Damp_32:
(Start: 60 @38419 has 239 MA's), (66, 38449), (71, 38470), (88, 38611), (90, 38623), (92, 38629),
(102, 38686), (103, 38692), (114, 38758), (118, 38776),

Gene: Dante_21 Start: 23017, Stop: 23358, Start Num: 63
Candidate Starts for Dante_21:
(8, 22693), (Start: 50 @22963 has 1 MA's), (Start: 63 @23017 has 212 MA's), (75, 23086), (91, 23212),
(96, 23230), (107, 23302), (109, 23308), (114, 23335),

Gene: DarthP_28 Start: 24798, Stop: 25169, Start Num: 60
Candidate Starts for DarthP_28:
(Start: 60 @24798 has 239 MA's), (82, 24960), (92, 25014), (94, 25020), (107, 25104),

Gene: Dartin_29 Start: 23775, Stop: 24149, Start Num: 60
Candidate Starts for Dartin_29:
(Start: 60 @23775 has 239 MA's), (67, 23811), (73, 23838), (94, 24000), (96, 24012), (101, 24033),
(114, 24114),

Gene: DeadP_21 Start: 23031, Stop: 23372, Start Num: 63
Candidate Starts for DeadP_21:
(8, 22707), (Start: 50 @22977 has 1 MA's), (Start: 63 @23031 has 212 MA's), (75, 23100), (91, 23226),
(96, 23244), (107, 23316), (109, 23322), (114, 23349),

Gene: Deb65_21 Start: 22994, Stop: 23335, Start Num: 63
Candidate Starts for Deb65_21:
(Start: 63 @22994 has 212 MA's), (75, 23063), (91, 23189), (96, 23207), (107, 23279), (109, 23285),
(114, 23312),

Gene: Deby_29 Start: 24387, Stop: 24758, Start Num: 60
Candidate Starts for Deby_29:
(Start: 60 @24387 has 239 MA's), (82, 24549), (92, 24603), (96, 24621), (114, 24723),

Gene: DeepSoil15_28 Start: 24633, Stop: 24989, Start Num: 60
Candidate Starts for DeepSoil15_28:
(Start: 60 @24633 has 239 MA's), (71, 24684), (75, 24702), (77, 24741), (81, 24792), (82, 24795), (87,
24813), (90, 24828), (101, 24873), (105, 24909), (107, 24921), (114, 24957),

Gene: Devera_29 Start: 24432, Stop: 24803, Start Num: 60
Candidate Starts for Devera_29:
(Start: 60 @24432 has 239 MA's), (82, 24594), (92, 24648), (94, 24654), (101, 24687), (114, 24768),

Gene: Dewey_28 Start: 24633, Stop: 24989, Start Num: 60
Candidate Starts for Dewey_28:
(Start: 60 @24633 has 239 MA's), (71, 24684), (75, 24702), (77, 24741), (81, 24792), (82, 24795), (87,
24813), (90, 24828), (101, 24873), (105, 24909), (107, 24921), (114, 24957),

Gene: Diabla_34 Start: 38845, Stop: 39210, Start Num: 60
Candidate Starts for Diabla_34:
(Start: 60 @38845 has 239 MA's), (66, 38875), (71, 38896), (88, 39037), (90, 39049), (92, 39055),
(114, 39184), (118, 39202),

Gene: DillTech15_21 Start: 23035, Stop: 23376, Start Num: 63

Candidate Starts for DillTech15_21:

(8, 22711), (Start: 50 @22981 has 1 MA's), (Start: 63 @23035 has 212 MA's), (75, 23104), (91, 23230), (96, 23248), (107, 23320), (109, 23326), (114, 23353),

Gene: DirtMcgirt_22 Start: 22822, Stop: 23163, Start Num: 63

Candidate Starts for DirtMcgirt_22:

(Start: 50 @22768 has 1 MA's), (Start: 63 @22822 has 212 MA's), (75, 22891), (89, 23005), (96, 23035), (107, 23107), (109, 23113), (114, 23140), (117, 23155),

Gene: DismalFunk_27 Start: 22685, Stop: 23053, Start Num: 61

Candidate Starts for DismalFunk_27:

(57, 22649), (Start: 61 @22685 has 12 MA's), (79, 22826), (82, 22847), (94, 22907), (96, 22919), (101, 22940),

Gene: DismalStressor_27 Start: 22685, Stop: 23053, Start Num: 61

Candidate Starts for DismalStressor_27:

(57, 22649), (Start: 61 @22685 has 12 MA's), (79, 22826), (82, 22847), (94, 22907), (96, 22919), (101, 22940),

Gene: DoRead_21 Start: 22980, Stop: 23321, Start Num: 63

Candidate Starts for DoRead_21:

(Start: 63 @22980 has 212 MA's), (75, 23049), (89, 23163), (96, 23193), (103, 23235), (109, 23271),

Gene: DocMcStuffins_22 Start: 22871, Stop: 23212, Start Num: 63

Candidate Starts for DocMcStuffins_22:

(20, 22673), (21, 22676), (22, 22682), (23, 22685), (27, 22709), (53, 22823), (Start: 63 @22871 has 212 MA's), (75, 22940), (89, 23054), (96, 23084), (107, 23156), (109, 23162), (114, 23189),

Gene: Dole_29 Start: 24434, Stop: 24805, Start Num: 60

Candidate Starts for Dole_29:

(Start: 60 @24434 has 239 MA's), (82, 24596), (92, 24650), (94, 24656), (101, 24689), (114, 24770),

Gene: Donkeykong_21 Start: 23175, Stop: 23516, Start Num: 63

Candidate Starts for Donkeykong_21:

(8, 22851), (Start: 50 @23121 has 1 MA's), (Start: 63 @23175 has 212 MA's), (75, 23244), (91, 23370), (96, 23388), (107, 23460), (109, 23466), (114, 23493),

Gene: Doomphist_21 Start: 23135, Stop: 23476, Start Num: 63

Candidate Starts for Doomphist_21:

(8, 22811), (Start: 50 @23081 has 1 MA's), (Start: 63 @23135 has 212 MA's), (75, 23204), (91, 23330), (96, 23348), (107, 23420), (109, 23426), (114, 23453),

Gene: Dorothy_21 Start: 22955, Stop: 23296, Start Num: 63

Candidate Starts for Dorothy_21:

(Start: 63 @22955 has 212 MA's), (75, 23024), (91, 23150), (96, 23168), (107, 23240), (109, 23246), (114, 23273),

Gene: DosHalletts_22 Start: 22991, Stop: 23332, Start Num: 63

Candidate Starts for DosHalletts_22:

(24, 22805), (Start: 50 @22931 has 1 MA's), (Start: 63 @22991 has 212 MA's), (75, 23060), (89, 23174), (103, 23246), (109, 23282), (116, 23321),

Gene: DotProduct_21 Start: 23003, Stop: 23344, Start Num: 63

Candidate Starts for DotProduct_21:

(8, 22679), (Start: 50 @22949 has 1 MA's), (Start: 63 @23003 has 212 MA's), (75, 23072), (91, 23198), (96, 23216), (107, 23288), (109, 23294), (114, 23321),

Gene: Doug_22 Start: 23547, Stop: 23888, Start Num: 63

Candidate Starts for Doug_22:

(Start: 63 @23547 has 212 MA's), (75, 23616), (91, 23742), (96, 23760), (107, 23832), (109, 23838), (114, 23865),

Gene: Douge_22 Start: 22575, Stop: 22916, Start Num: 63

Candidate Starts for Douge_22:

(Start: 63 @22575 has 212 MA's), (75, 22644), (83, 22740), (85, 22746), (89, 22758), (99, 22803), (107, 22860), (113, 22890),

Gene: DrHayes_29 Start: 24379, Stop: 24750, Start Num: 60

Candidate Starts for DrHayes_29:

(Start: 60 @24379 has 239 MA's), (82, 24541), (92, 24595), (101, 24634),

Gene: DrLupo_40 Start: 31314, Stop: 31688, Start Num: 61

Candidate Starts for DrLupo_40:

(Start: 61 @31314 has 12 MA's), (75, 31383), (87, 31512), (101, 31572), (105, 31611), (114, 31656),

Gene: Drago_22 Start: 22820, Stop: 23161, Start Num: 63

Candidate Starts for Drago_22:

(8, 22496), (Start: 50 @22766 has 1 MA's), (Start: 63 @22820 has 212 MA's), (75, 22889), (91, 23015), (96, 23033), (107, 23105), (109, 23111), (114, 23138),

Gene: Duke13_39 Start: 35346, Stop: 35741, Start Num: 50

Candidate Starts for Duke13_39:

(8, 35076), (Start: 50 @35346 has 1 MA's), (Start: 63 @35400 has 212 MA's), (75, 35469), (91, 35595), (96, 35613), (107, 35685), (109, 35691), (114, 35718),

Gene: Durfee_29 Start: 24453, Stop: 24824, Start Num: 60

Candidate Starts for Durfee_29:

(Start: 60 @24453 has 239 MA's), (82, 24615), (92, 24669), (114, 24789),

Gene: DyoEdafos_23 Start: 22782, Stop: 23123, Start Num: 63

Candidate Starts for DyoEdafos_23:

(Start: 63 @22782 has 212 MA's), (89, 22965), (99, 23010), (107, 23067), (113, 23097),

Gene: Ecliptus_35 Start: 25974, Stop: 26321, Start Num: 62

Candidate Starts for Ecliptus_35:

(36, 25845), (Start: 59 @25968 has 1 MA's), (Start: 62 @25974 has 22 MA's), (64, 25995), (66, 26007), (77, 26085), (83, 26148), (84, 26151), (89, 26166), (91, 26178), (95, 26193), (99, 26208), (104, 26250), (107, 26271), (113, 26295),

Gene: Efra2_29 Start: 23669, Stop: 24040, Start Num: 60

Candidate Starts for Efra2_29:

(Start: 60 @23669 has 239 MA's), (79, 23810), (82, 23831), (92, 23885), (96, 23903), (101, 23924), (114, 24005),

Gene: Ein37_28 Start: 24633, Stop: 24989, Start Num: 60

Candidate Starts for Ein37_28:

(Start: 60 @24633 has 239 MA's), (71, 24684), (75, 24702), (77, 24741), (81, 24792), (82, 24795), (87, 24813), (90, 24828), (101, 24873), (105, 24909), (107, 24921), (114, 24957),

Gene: Eish_21 Start: 23137, Stop: 23478, Start Num: 63

Candidate Starts for Eish_21:

(Start: 63 @23137 has 212 MA's), (75, 23206), (89, 23320), (96, 23350), (107, 23422), (109, 23428), (114, 23455),

Gene: Ekdilam_26 Start: 24557, Stop: 24928, Start Num: 60

Candidate Starts for Ekdilam_26:

(Start: 60 @24557 has 239 MA's), (82, 24719), (92, 24773), (94, 24779), (107, 24863),

Gene: EleanorGeorge_21 Start: 23169, Stop: 23510, Start Num: 63

Candidate Starts for EleanorGeorge_21:

(8, 22845), (Start: 50 @23115 has 1 MA's), (Start: 63 @23169 has 212 MA's), (75, 23238), (91, 23364), (96, 23382), (107, 23454), (109, 23460), (114, 23487),

Gene: Ellie_26 Start: 24559, Stop: 24930, Start Num: 60

Candidate Starts for Ellie_26:

(Start: 60 @24559 has 239 MA's), (66, 24589), (82, 24721), (92, 24775), (98, 24799), (101, 24814),

Gene: Emerson_29 Start: 24413, Stop: 24784, Start Num: 60

Candidate Starts for Emerson_29:

(Start: 60 @24413 has 239 MA's), (82, 24575), (92, 24629), (96, 24647), (114, 24749),

Gene: Emianna_46 Start: 37314, Stop: 37655, Start Num: 60

Candidate Starts for Emianna_46:

(Start: 60 @37314 has 239 MA's), (81, 37464), (88, 37488), (92, 37506), (93, 37509), (98, 37530), (101, 37545), (105, 37581), (110, 37614),

Gene: Emma_21 Start: 23049, Stop: 23390, Start Num: 63

Candidate Starts for Emma_21:

(8, 22725), (Start: 50 @22995 has 1 MA's), (Start: 63 @23049 has 212 MA's), (75, 23118), (91, 23244), (96, 23262), (107, 23334), (109, 23340), (114, 23367),

Gene: Empress_22 Start: 24346, Stop: 24687, Start Num: 63

Candidate Starts for Empress_22:

(Start: 63 @24346 has 212 MA's), (75, 24415), (91, 24541), (96, 24559), (107, 24631), (109, 24637), (114, 24664),

Gene: Enby_22 Start: 22820, Stop: 23161, Start Num: 63

Candidate Starts for Enby_22:

(8, 22496), (Start: 50 @22766 has 1 MA's), (Start: 63 @22820 has 212 MA's), (75, 22889), (91, 23015), (96, 23033), (107, 23105), (109, 23111), (114, 23138),

Gene: Enkosi_25 Start: 23944, Stop: 24318, Start Num: 60

Candidate Starts for Enkosi_25:

(Start: 60 @23944 has 239 MA's), (67, 23980), (73, 24007), (88, 24145), (111, 24274), (114, 24283),

Gene: Ennea_53 Start: 38314, Stop: 38658, Start Num: 60

Candidate Starts for Ennea_53:

(Start: 60 @38314 has 239 MA's), (68, 38356), (88, 38488), (90, 38500), (101, 38545), (105, 38581),

Gene: Eradicator_21 Start: 23027, Stop: 23368, Start Num: 63

Candidate Starts for Eradicator_21:

(24, 22841), (Start: 50 @22967 has 1 MA's), (Start: 63 @23027 has 212 MA's), (75, 23096), (89, 23210), (103, 23282), (107, 23312), (109, 23318),

Gene: Estes_37 Start: 29115, Stop: 29459, Start Num: 63

Candidate Starts for Estes_37:

(Start: 63 @29115 has 212 MA's), (78, 29253), (88, 29298), (89, 29301),

Gene: Evanesce_28 Start: 24633, Stop: 24989, Start Num: 60

Candidate Starts for Evanesce_28:

(Start: 60 @24633 has 239 MA's), (71, 24684), (75, 24702), (77, 24741), (81, 24792), (82, 24795), (87, 24813), (90, 24828), (101, 24873), (105, 24909), (107, 24921), (114, 24957),

Gene: Fancypants_21 Start: 23003, Stop: 23344, Start Num: 63

Candidate Starts for Fancypants_21:

(Start: 50 @22949 has 1 MA's), (Start: 63 @23003 has 212 MA's), (75, 23072), (91, 23198), (96, 23216), (107, 23288), (109, 23294), (114, 23321),

Gene: FarmResident_22 Start: 22619, Stop: 22960, Start Num: 63

Candidate Starts for FarmResident_22:

(Start: 63 @22619 has 212 MA's), (75, 22688), (83, 22784), (85, 22790), (89, 22802), (99, 22847), (107, 22904), (113, 22934),

Gene: Fastidio_21 Start: 22966, Stop: 23307, Start Num: 63

Candidate Starts for Fastidio_21:

(8, 22642), (Start: 50 @22912 has 1 MA's), (Start: 63 @22966 has 212 MA's), (75, 23035), (91, 23161), (96, 23179), (107, 23251), (109, 23257), (114, 23284),

Gene: Fefferhead_28 Start: 24759, Stop: 25130, Start Num: 60

Candidate Starts for Fefferhead_28:

(Start: 60 @24759 has 239 MA's), (66, 24789), (82, 24921), (92, 24975), (94, 24981),

Gene: FelixAlejandro_36 Start: 39186, Stop: 39551, Start Num: 60

Candidate Starts for FelixAlejandro_36:

(Start: 60 @39186 has 239 MA's), (88, 39378), (90, 39390), (92, 39396),

Gene: Filuzino_21 Start: 22992, Stop: 23333, Start Num: 63

Candidate Starts for Filuzino_21:

(8, 22668), (Start: 50 @22938 has 1 MA's), (Start: 63 @22992 has 212 MA's), (75, 23061), (91, 23187), (96, 23205), (107, 23277), (109, 23283), (114, 23310),

Gene: Findley_27 Start: 22704, Stop: 23072, Start Num: 61

Candidate Starts for Findley_27:

(Start: 61 @22704 has 12 MA's), (73, 22764), (75, 22773), (79, 22845), (82, 22866), (94, 22926), (96, 22938), (101, 22959),

Gene: Fionnbharth_30 Start: 25612, Stop: 25989, Start Num: 60

Candidate Starts for Fionnbharth_30:

(Start: 60 @25612 has 239 MA's), (82, 25777), (90, 25825), (94, 25837), (101, 25870), (107, 25921), (111, 25942), (114, 25951),

Gene: Firehouse51_22 Start: 23558, Stop: 23899, Start Num: 63

Candidate Starts for Firehouse51_22:

(8, 23234), (Start: 50 @23504 has 1 MA's), (Start: 63 @23558 has 212 MA's), (75, 23627), (91, 23753), (96, 23771), (107, 23843), (109, 23849), (114, 23876),

Gene: Flapper_51 Start: 38025, Stop: 38366, Start Num: 60

Candidate Starts for Flapper_51:

(Start: 60 @38025 has 239 MA's), (81, 38175), (87, 38196), (93, 38220), (98, 38241), (105, 38292),

Gene: Flathead_22 Start: 22866, Stop: 23207, Start Num: 63

Candidate Starts for Flathead_22:

(8, 22542), (Start: 50 @22812 has 1 MA's), (Start: 63 @22866 has 212 MA's), (75, 22935), (91, 23061), (96, 23079), (107, 23151), (109, 23157), (114, 23184),

Gene: Float294_49 Start: 37756, Stop: 38100, Start Num: 60

Candidate Starts for Float294_49:

(Start: 60 @37756 has 239 MA's), (68, 37798), (88, 37930), (90, 37942), (101, 37987), (105, 38023),

Gene: Florinda_21 Start: 23013, Stop: 23354, Start Num: 63

Candidate Starts for Florinda_21:

(Start: 63 @23013 has 212 MA's), (75, 23082), (91, 23208), (96, 23226), (107, 23298), (109, 23304), (114, 23331),

Gene: Forge_28 Start: 24633, Stop: 24989, Start Num: 60

Candidate Starts for Forge_28:

(Start: 60 @24633 has 239 MA's), (71, 24684), (75, 24702), (77, 24741), (81, 24792), (82, 24795), (87, 24813), (90, 24828), (101, 24873), (105, 24909), (107, 24921), (114, 24957),

Gene: Foxboro_47 Start: 37820, Stop: 38161, Start Num: 60

Candidate Starts for Foxboro_47:

(Start: 60 @37820 has 239 MA's), (81, 37970), (88, 37994), (92, 38012), (93, 38015), (98, 38036), (101, 38051), (105, 38087), (110, 38120),

Gene: Frankie_22 Start: 23112, Stop: 23453, Start Num: 63

Candidate Starts for Frankie_22:

(Start: 63 @23112 has 212 MA's), (89, 23295), (96, 23325), (107, 23397), (114, 23430),

Gene: FreddyB_21 Start: 23071, Stop: 23412, Start Num: 63

Candidate Starts for FreddyB_21:

(24, 22885), (Start: 50 @23011 has 1 MA's), (Start: 63 @23071 has 212 MA's), (75, 23140), (89, 23254), (103, 23326), (109, 23362), (116, 23401),

Gene: Fruitloop_21 Start: 23030, Stop: 23371, Start Num: 63

Candidate Starts for Fruitloop_21:

(8, 22706), (Start: 50 @22976 has 1 MA's), (Start: 63 @23030 has 212 MA's), (75, 23099), (91, 23225), (96, 23243), (107, 23315), (109, 23321), (114, 23348),

Gene: Fury_54 Start: 36492, Stop: 36836, Start Num: 60

Candidate Starts for Fury_54:

(Start: 60 @36492 has 239 MA's), (87, 36663), (90, 36678),

Gene: GRU1_36 Start: 29572, Stop: 29913, Start Num: 60

Candidate Starts for GRU1_36:

(Start: 60 @29572 has 239 MA's), (81, 29722), (98, 29788),

Gene: GTE5_38 Start: 30882, Stop: 31223, Start Num: 60
Candidate Starts for GTE5_38:
(Start: 60 @30882 has 239 MA's), (81, 31032), (98, 31098),

Gene: GTE8_35 Start: 30569, Stop: 30913, Start Num: 60
Candidate Starts for GTE8_35:
(Start: 60 @30569 has 239 MA's), (68, 30611), (88, 30743), (101, 30800), (105, 30836),

Gene: GUmbie_21 Start: 23003, Stop: 23344, Start Num: 63
Candidate Starts for GUmbie_21:
(Start: 50 @22949 has 1 MA's), (Start: 63 @23003 has 212 MA's), (75, 23072), (89, 23186), (96, 23216), (107, 23288), (109, 23294), (114, 23321),

Gene: Gaia_24 Start: 25558, Stop: 25899, Start Num: 63
Candidate Starts for Gaia_24:
(10, 25261), (11, 25264), (13, 25282), (15, 25285), (19, 25348), (28, 25396), (31, 25414), (37, 25429), (39, 25441), (Start: 63 @25558 has 212 MA's), (89, 25741), (96, 25771), (103, 25813), (117, 25891),

Gene: Galactic_21 Start: 22995, Stop: 23336, Start Num: 63
Candidate Starts for Galactic_21:
(8, 22671), (Start: 50 @22941 has 1 MA's), (Start: 63 @22995 has 212 MA's), (75, 23064), (91, 23190), (96, 23208), (107, 23280), (109, 23286), (114, 23313),

Gene: GalacticEye_32 Start: 39217, Stop: 39582, Start Num: 60
Candidate Starts for GalacticEye_32:
(Start: 60 @39217 has 239 MA's), (66, 39247), (71, 39268), (88, 39409), (90, 39421), (92, 39427), (102, 39484), (103, 39490), (114, 39556), (118, 39574),

Gene: Gancho_27 Start: 24357, Stop: 24713, Start Num: 60
Candidate Starts for Gancho_27:
(Start: 60 @24357 has 239 MA's), (71, 24408), (75, 24426), (77, 24465), (81, 24516), (82, 24519), (87, 24537), (101, 24597), (105, 24633), (107, 24645), (114, 24681),

Gene: Gandalph_21 Start: 23077, Stop: 23418, Start Num: 63
Candidate Starts for Gandalph_21:
(24, 22891), (Start: 50 @23017 has 1 MA's), (Start: 63 @23077 has 212 MA's), (75, 23146), (89, 23260), (96, 23290), (103, 23332), (109, 23368),

Gene: Ganymede_30 Start: 24433, Stop: 24804, Start Num: 60
Candidate Starts for Ganymede_30:
(Start: 60 @24433 has 239 MA's), (82, 24595), (92, 24649), (96, 24667), (114, 24769),

Gene: GardenSalsa_36 Start: 28939, Stop: 29283, Start Num: 63
Candidate Starts for GardenSalsa_36:
(Start: 63 @28939 has 212 MA's), (78, 29077), (88, 29122), (89, 29125),

Gene: GenevaB15_36 Start: 28984, Stop: 29328, Start Num: 63
Candidate Starts for GenevaB15_36:
(Start: 63 @28984 has 212 MA's), (89, 29170),

Gene: Geraldini_29 Start: 24430, Stop: 24801, Start Num: 60
Candidate Starts for Geraldini_29:

(Start: 60 @24430 has 239 MA's), (82, 24592), (92, 24646), (96, 24664), (114, 24766), (117, 24781),

Gene: Geralt_21 Start: 22993, Stop: 23334, Start Num: 63

Candidate Starts for Geralt_21:

(Start: 63 @22993 has 212 MA's), (75, 23062), (91, 23188), (96, 23206), (107, 23278), (109, 23284), (114, 23311),

Gene: Getalong_33 Start: 25232, Stop: 25576, Start Num: 62

Candidate Starts for Getalong_33:

(Start: 62 @25232 has 22 MA's), (64, 25253), (77, 25343), (84, 25409), (89, 25424), (95, 25451), (99, 25466), (104, 25505), (107, 25526), (113, 25550),

Gene: GigiOuiOui_21 Start: 23128, Stop: 23469, Start Num: 63

Candidate Starts for GigiOuiOui_21:

(Start: 50 @23074 has 1 MA's), (Start: 63 @23128 has 212 MA's), (75, 23197), (89, 23311), (96, 23341), (107, 23413), (109, 23419), (114, 23446), (117, 23461),

Gene: Giles_28 Start: 24633, Stop: 24989, Start Num: 60

Candidate Starts for Giles_28:

(Start: 60 @24633 has 239 MA's), (71, 24684), (75, 24702), (77, 24741), (81, 24792), (82, 24795), (87, 24813), (90, 24828), (101, 24873), (105, 24909), (107, 24921), (114, 24957),

Gene: Girafales_22 Start: 22821, Stop: 23162, Start Num: 63

Candidate Starts for Girafales_22:

(Start: 63 @22821 has 212 MA's), (75, 22890), (91, 23016), (96, 23034), (107, 23106), (109, 23112), (114, 23139),

Gene: Girr_21 Start: 22972, Stop: 23313, Start Num: 63

Candidate Starts for Girr_21:

(8, 22648), (Start: 50 @22918 has 1 MA's), (Start: 63 @22972 has 212 MA's), (75, 23041), (91, 23167), (96, 23185), (107, 23257), (109, 23263), (114, 23290),

Gene: Gonephishing_37 Start: 33512, Stop: 33853, Start Num: 63

Candidate Starts for Gonephishing_37:

(8, 33188), (Start: 50 @33458 has 1 MA's), (Start: 63 @33512 has 212 MA's), (75, 33581), (91, 33707), (96, 33725), (107, 33797), (109, 33803), (114, 33830),

Gene: Gorge_21 Start: 23038, Stop: 23379, Start Num: 63

Candidate Starts for Gorge_21:

(24, 22852), (Start: 50 @22978 has 1 MA's), (Start: 63 @23038 has 212 MA's), (75, 23107), (89, 23221), (103, 23293), (109, 23329), (116, 23368),

Gene: Gravaillia_28 Start: 24363, Stop: 24719, Start Num: 60

Candidate Starts for Gravaillia_28:

(Start: 60 @24363 has 239 MA's), (71, 24414), (75, 24432), (77, 24471), (81, 24522), (82, 24525), (87, 24543), (101, 24603), (105, 24639), (107, 24651), (114, 24687),

Gene: Grimmer_22 Start: 23604, Stop: 23945, Start Num: 63

Candidate Starts for Grimmer_22:

(8, 23280), (Start: 50 @23550 has 1 MA's), (Start: 63 @23604 has 212 MA's), (89, 23787), (96, 23817), (107, 23889), (109, 23895), (114, 23922),

Gene: GrootJr_48 Start: 36696, Stop: 37037, Start Num: 60

Candidate Starts for GrootJr_48:

(Start: 60 @36696 has 239 MA's), (81, 36846), (88, 36870), (92, 36888), (93, 36891), (98, 36912), (101, 36927), (105, 36963), (110, 36996),

Gene: Gspu1_27 Start: 22779, Stop: 23123, Start Num: 60

Candidate Starts for Gspu1_27:

(Start: 60 @22779 has 239 MA's), (86, 22947), (105, 23046), (109, 23064), (112, 23088), (114, 23094),

Gene: Guanica15_29 Start: 23686, Stop: 24057, Start Num: 60

Candidate Starts for Guanica15_29:

(Start: 60 @23686 has 239 MA's), (79, 23827), (82, 23848), (92, 23902), (96, 23920), (101, 23941), (114, 24022),

Gene: Guillaume_32 Start: 39267, Stop: 39632, Start Num: 60

Candidate Starts for Guillaume_32:

(Start: 60 @39267 has 239 MA's), (66, 39297), (71, 39318), (88, 39459), (90, 39471), (92, 39477), (102, 39534), (103, 39540), (114, 39606), (118, 39624),

Gene: Guppsters_22 Start: 23221, Stop: 23562, Start Num: 63

Candidate Starts for Guppsters_22:

(24, 23035), (Start: 50 @23161 has 1 MA's), (Start: 63 @23221 has 212 MA's), (75, 23290), (89, 23404), (96, 23434), (103, 23476), (109, 23512),

Gene: HH92_28 Start: 24633, Stop: 24989, Start Num: 60

Candidate Starts for HH92_28:

(Start: 60 @24633 has 239 MA's), (71, 24684), (75, 24702), (77, 24741), (81, 24792), (82, 24795), (87, 24813), (90, 24828), (101, 24873), (105, 24909), (107, 24921), (114, 24957),

Gene: Hades_21 Start: 23070, Stop: 23411, Start Num: 63

Candidate Starts for Hades_21:

(24, 22884), (Start: 50 @23010 has 1 MA's), (Start: 63 @23070 has 212 MA's), (75, 23139), (89, 23253), (91, 23265), (103, 23325), (107, 23355), (109, 23361),

Gene: Hadrien_28 Start: 24633, Stop: 24989, Start Num: 60

Candidate Starts for Hadrien_28:

(Start: 60 @24633 has 239 MA's), (71, 24684), (75, 24702), (77, 24741), (81, 24792), (82, 24795), (87, 24813), (90, 24828), (101, 24873), (105, 24909), (107, 24921), (114, 24957),

Gene: Hail_28 Start: 24633, Stop: 24989, Start Num: 60

Candidate Starts for Hail_28:

(Start: 60 @24633 has 239 MA's), (71, 24684), (75, 24702), (77, 24741), (81, 24792), (82, 24795), (87, 24813), (90, 24828), (101, 24873), (105, 24909), (107, 24921), (114, 24957),

Gene: Hail2Pitt_32 Start: 39744, Stop: 40109, Start Num: 60

Candidate Starts for Hail2Pitt_32:

(Start: 60 @39744 has 239 MA's), (66, 39774), (71, 39795), (88, 39936), (90, 39948), (92, 39954), (102, 40011), (103, 40017), (114, 40083), (118, 40101),

Gene: Hammy_28 Start: 24789, Stop: 25160, Start Num: 60

Candidate Starts for Hammy_28:

(Start: 60 @24789 has 239 MA's), (82, 24951), (92, 25005), (94, 25011), (107, 25095),

Gene: Hamulus_21 Start: 23004, Stop: 23345, Start Num: 63

Candidate Starts for Hamulus_21:

(8, 22680), (Start: 50 @22950 has 1 MA's), (Start: 63 @23004 has 212 MA's), (75, 23073), (91, 23199), (96, 23217), (107, 23289), (109, 23295), (114, 23322),

Gene: Harambe_32 Start: 39534, Stop: 39899, Start Num: 60

Candidate Starts for Harambe_32:

(Start: 60 @39534 has 239 MA's), (66, 39564), (71, 39585), (88, 39726), (90, 39738), (92, 39744), (102, 39801), (103, 39807), (114, 39873), (118, 39891),

Gene: Harley_21 Start: 22994, Stop: 23335, Start Num: 63

Candidate Starts for Harley_21:

(Start: 50 @22940 has 1 MA's), (Start: 63 @22994 has 212 MA's), (75, 23063), (91, 23189), (96, 23207), (107, 23279), (109, 23285), (114, 23312),

Gene: HedwigODU_29 Start: 24422, Stop: 24793, Start Num: 60

Candidate Starts for HedwigODU_29:

(Start: 60 @24422 has 239 MA's), (82, 24584), (92, 24638), (96, 24656), (114, 24758),

Gene: Hegedechwinu_22 Start: 22849, Stop: 23190, Start Num: 63

Candidate Starts for Hegedechwinu_22:

(8, 22525), (Start: 50 @22795 has 1 MA's), (Start: 63 @22849 has 212 MA's), (75, 22918), (91, 23044), (96, 23062), (107, 23134), (109, 23140), (114, 23167),

Gene: Heinz_29 Start: 21765, Stop: 22109, Start Num: 62

Candidate Starts for Heinz_29:

(36, 21636), (42, 21663), (Start: 62 @21765 has 22 MA's), (66, 21798), (77, 21876), (84, 21942), (89, 21957), (91, 21969), (107, 22059), (115, 22095),

Gene: Hello_32 Start: 39496, Stop: 39861, Start Num: 60

Candidate Starts for Hello_32:

(Start: 60 @39496 has 239 MA's), (66, 39526), (71, 39547), (88, 39688), (90, 39700), (92, 39706), (102, 39763), (103, 39769), (114, 39835), (118, 39853),

Gene: Hlubikazi_21 Start: 23096, Stop: 23437, Start Num: 63

Candidate Starts for Hlubikazi_21:

(8, 22772), (Start: 50 @23042 has 1 MA's), (Start: 63 @23096 has 212 MA's), (75, 23165), (91, 23291), (96, 23309), (107, 23381), (109, 23387), (114, 23414),

Gene: Holliday_32 Start: 24550, Stop: 24897, Start Num: 62

Candidate Starts for Holliday_32:

(36, 24421), (Start: 59 @24544 has 1 MA's), (Start: 62 @24550 has 22 MA's), (64, 24571), (66, 24583), (77, 24661), (83, 24724), (84, 24727), (89, 24742), (91, 24754), (95, 24769), (99, 24784), (104, 24826), (107, 24847), (113, 24871),

Gene: Homura_29 Start: 24453, Stop: 24824, Start Num: 60

Candidate Starts for Homura_29:

(Start: 60 @24453 has 239 MA's), (82, 24615), (92, 24669), (96, 24687), (114, 24789),

Gene: Horus_32 Start: 24478, Stop: 24822, Start Num: 62

Candidate Starts for Horus_32:

(Start: 62 @24478 has 22 MA's), (64, 24499), (77, 24589), (84, 24655), (89, 24670), (91, 24682), (95, 24697), (99, 24712), (104, 24751), (107, 24772), (113, 24796),

Gene: HubbaBubba_44 Start: 32844, Stop: 33188, Start Num: 60

Candidate Starts for HubbaBubba_44:

(Start: 60 @32844 has 239 MA's), (87, 33015), (98, 33060),

Gene: Hurricane_30 Start: 25339, Stop: 25695, Start Num: 60

Candidate Starts for Hurricane_30:

(Start: 60 @25339 has 239 MA's), (66, 25369), (73, 25399), (86, 25516), (92, 25540), (94, 25546), (96, 25558), (114, 25660),

Gene: Hyperbowlee_29 Start: 24453, Stop: 24824, Start Num: 60

Candidate Starts for Hyperbowlee_29:

(Start: 60 @24453 has 239 MA's), (82, 24615), (92, 24669), (114, 24789),

Gene: IDyn_47 Start: 34273, Stop: 34617, Start Num: 60

Candidate Starts for IDyn_47:

(Start: 60 @34273 has 239 MA's), (87, 34444), (98, 34489),

Gene: IMPilo_21 Start: 23031, Stop: 23372, Start Num: 63

Candidate Starts for IMPilo_21:

(8, 22707), (Start: 50 @22977 has 1 MA's), (Start: 63 @23031 has 212 MA's), (75, 23100), (91, 23226), (96, 23244), (107, 23316), (109, 23322), (114, 23349),

Gene: IbOuu_21 Start: 22998, Stop: 23339, Start Num: 63

Candidate Starts for IbOuu_21:

(8, 22674), (Start: 50 @22944 has 1 MA's), (Start: 63 @22998 has 212 MA's), (75, 23067), (91, 23193), (96, 23211), (107, 23283), (109, 23289), (114, 23316),

Gene: Ibhubesi_21 Start: 23001, Stop: 23342, Start Num: 63

Candidate Starts for Ibhubesi_21:

(Start: 63 @23001 has 212 MA's), (89, 23184), (96, 23214), (107, 23286), (109, 23292), (114, 23319),

Gene: Illumine_29 Start: 24434, Stop: 24805, Start Num: 60

Candidate Starts for Illumine_29:

(Start: 60 @24434 has 239 MA's), (82, 24596), (92, 24650), (94, 24656), (101, 24689), (114, 24770),

Gene: Indlulamithi_30 Start: 27981, Stop: 28322, Start Num: 63

Candidate Starts for Indlulamithi_30:

(Start: 63 @27981 has 212 MA's), (89, 28164), (99, 28209), (106, 28254), (113, 28296),

Gene: Inky_29 Start: 24453, Stop: 24824, Start Num: 60

Candidate Starts for Inky_29:

(Start: 60 @24453 has 239 MA's), (82, 24615), (92, 24669), (96, 24687), (114, 24789),

Gene: Inventum_21 Start: 23129, Stop: 23470, Start Num: 63

Candidate Starts for Inventum_21:

(Start: 63 @23129 has 212 MA's), (75, 23198), (91, 23324), (96, 23342), (107, 23414), (109, 23420), (114, 23447), (117, 23462),

Gene: IrishSherpFalk_22 Start: 24358, Stop: 24699, Start Num: 63

Candidate Starts for IrishSherpFalk_22:

(8, 24034), (Start: 50 @24304 has 1 MA's), (Start: 63 @24358 has 212 MA's), (75, 24427), (91, 24553), (96, 24571), (107, 24643), (109, 24649), (114, 24676),

Gene: JAWS_29 Start: 24407, Stop: 24778, Start Num: 60
Candidate Starts for JAWS_29:
(Start: 60 @24407 has 239 MA's), (82, 24569), (92, 24623), (96, 24641), (114, 24743),

Gene: JF1_30 Start: 25611, Stop: 25988, Start Num: 60
Candidate Starts for JF1_30:
(Start: 60 @25611 has 239 MA's), (82, 25776), (90, 25824), (94, 25836), (101, 25869), (107, 25920),
(111, 25941), (114, 25950),

Gene: JalFarm20_23 Start: 23368, Stop: 23709, Start Num: 63
Candidate Starts for JalFarm20_23:
(8, 23044), (Start: 50 @23314 has 1 MA's), (Start: 63 @23368 has 212 MA's), (75, 23437), (91, 23563),
(96, 23581), (107, 23653), (109, 23659), (114, 23686),

Gene: James_21 Start: 23034, Stop: 23375, Start Num: 63
Candidate Starts for James_21:
(24, 22848), (Start: 50 @22974 has 1 MA's), (Start: 63 @23034 has 212 MA's), (75, 23103), (89,
23217), (103, 23289), (109, 23325), (116, 23364),

Gene: Jams_32 Start: 38705, Stop: 39070, Start Num: 60
Candidate Starts for Jams_32:
(Start: 60 @38705 has 239 MA's), (66, 38735), (71, 38756), (88, 38897), (90, 38909), (92, 38915),
(102, 38972), (103, 38978), (114, 39044), (118, 39062),

Gene: Jacob_21 Start: 23069, Stop: 23410, Start Num: 63
Candidate Starts for Jacob_21:
(24, 22883), (Start: 50 @23009 has 1 MA's), (Start: 63 @23069 has 212 MA's), (75, 23138), (89,
23252), (103, 23324), (109, 23360), (116, 23399),

Gene: Jarvi_29 Start: 24453, Stop: 24824, Start Num: 60
Candidate Starts for Jarvi_29:
(Start: 60 @24453 has 239 MA's), (82, 24615), (92, 24669), (96, 24687), (114, 24789),

Gene: Jayhawk_29 Start: 24420, Stop: 24791, Start Num: 60
Candidate Starts for Jayhawk_29:
(Start: 60 @24420 has 239 MA's), (82, 24582), (92, 24636), (96, 24654), (114, 24756),

Gene: Jeckyll_29 Start: 24453, Stop: 24824, Start Num: 60
Candidate Starts for Jeckyll_29:
(Start: 60 @24453 has 239 MA's), (82, 24615), (92, 24669), (96, 24687), (114, 24789),

Gene: Jellybones_35 Start: 39047, Stop: 39412, Start Num: 60
Candidate Starts for Jellybones_35:
(Start: 60 @39047 has 239 MA's), (88, 39239),

Gene: Jifall16_45 Start: 36968, Stop: 37309, Start Num: 60
Candidate Starts for Jifall16_45:
(Start: 60 @36968 has 239 MA's), (81, 37118), (88, 37142), (92, 37160), (93, 37163), (98, 37184),
(101, 37199), (105, 37235), (110, 37268),

Gene: Jinglebell_20 Start: 23238, Stop: 23579, Start Num: 63
Candidate Starts for Jinglebell_20:
(Start: 63 @23238 has 212 MA's), (91, 23433), (96, 23451), (109, 23529),

Gene: Job42_24 Start: 24683, Stop: 25024, Start Num: 63

Candidate Starts for Job42_24:

(8, 24359), (Start: 50 @24629 has 1 MA's), (Start: 63 @24683 has 212 MA's), (75, 24752), (91, 24878), (96, 24896), (107, 24968), (109, 24974), (114, 25001),

Gene: JoeyJr_21 Start: 23165, Stop: 23506, Start Num: 63

Candidate Starts for JoeyJr_21:

(Start: 63 @23165 has 212 MA's), (75, 23234), (91, 23360), (96, 23378), (107, 23450), (109, 23456), (114, 23483),

Gene: John316_35 Start: 39000, Stop: 39365, Start Num: 60

Candidate Starts for John316_35:

(Start: 60 @39000 has 239 MA's), (88, 39192), (90, 39204), (92, 39210),

Gene: Jormungandr_32 Start: 39249, Stop: 39614, Start Num: 60

Candidate Starts for Jormungandr_32:

(Start: 60 @39249 has 239 MA's), (66, 39279), (71, 39300), (88, 39441), (90, 39453), (92, 39459), (102, 39516), (103, 39522), (114, 39588), (118, 39606),

Gene: Joy99_29 Start: 24382, Stop: 24753, Start Num: 60

Candidate Starts for Joy99_29:

(Start: 60 @24382 has 239 MA's), (82, 24544), (92, 24598), (96, 24616), (114, 24718),

Gene: Juice456_23 Start: 24120, Stop: 24461, Start Num: 63

Candidate Starts for Juice456_23:

(8, 23796), (Start: 50 @24066 has 1 MA's), (Start: 63 @24120 has 212 MA's), (75, 24189), (91, 24315), (96, 24333), (107, 24405), (109, 24411), (114, 24438),

Gene: Juniper1_21 Start: 22993, Stop: 23334, Start Num: 63

Candidate Starts for Juniper1_21:

(Start: 63 @22993 has 212 MA's), (89, 23176), (96, 23206), (107, 23278), (109, 23284), (114, 23311), (117, 23326),

Gene: Kabluna_50 Start: 36389, Stop: 36733, Start Num: 60

Candidate Starts for Kabluna_50:

(14, 36137), (47, 36323), (Start: 60 @36389 has 239 MA's), (86, 36557), (88, 36563), (105, 36656),

Gene: Kamaru_32 Start: 24550, Stop: 24897, Start Num: 62

Candidate Starts for Kamaru_32:

(36, 24421), (Start: 59 @24544 has 1 MA's), (Start: 62 @24550 has 22 MA's), (64, 24571), (66, 24583), (77, 24661), (83, 24724), (84, 24727), (89, 24742), (91, 24754), (95, 24769), (99, 24784), (104, 24826), (107, 24847), (113, 24871),

Gene: Karhdo_21 Start: 23129, Stop: 23470, Start Num: 63

Candidate Starts for Karhdo_21:

(8, 22805), (Start: 50 @23075 has 1 MA's), (Start: 63 @23129 has 212 MA's), (75, 23198), (91, 23324), (96, 23342), (107, 23414), (109, 23420), (114, 23447),

Gene: Kaseim_33 Start: 38690, Stop: 39055, Start Num: 60

Candidate Starts for Kaseim_33:

(Start: 60 @38690 has 239 MA's), (66, 38720), (71, 38741), (88, 38882), (90, 38894), (92, 38900), (102, 38957), (103, 38963), (114, 39029), (118, 39047),

Gene: Kenna_31 Start: 24618, Stop: 24962, Start Num: 62

Candidate Starts for Kenna_31:

(51, 24567), (Start: 62 @24618 has 22 MA's), (64, 24639), (66, 24651), (77, 24729), (84, 24795), (89, 24810), (95, 24837), (99, 24852), (104, 24891), (107, 24912), (113, 24936),

Gene: Keshu_30 Start: 25333, Stop: 25689, Start Num: 60

Candidate Starts for Keshu_30:

(Start: 60 @25333 has 239 MA's), (66, 25363), (73, 25393), (86, 25510), (92, 25534), (94, 25540), (96, 25552), (101, 25573), (114, 25654),

Gene: KiSi_28 Start: 23569, Stop: 23943, Start Num: 60

Candidate Starts for KiSi_28:

(Start: 60 @23569 has 239 MA's), (75, 23641), (76, 23662), (82, 23734), (101, 23827),

Gene: KidneyBean_46 Start: 37092, Stop: 37433, Start Num: 60

Candidate Starts for KidneyBean_46:

(Start: 60 @37092 has 239 MA's), (81, 37242), (88, 37266), (92, 37284), (93, 37287), (98, 37308), (101, 37323), (105, 37359), (110, 37392),

Gene: Kimberlium_23 Start: 24120, Stop: 24461, Start Num: 63

Candidate Starts for Kimberlium_23:

(8, 23796), (Start: 50 @24066 has 1 MA's), (Start: 63 @24120 has 212 MA's), (75, 24189), (91, 24315), (96, 24333), (107, 24405), (109, 24411), (114, 24438),

Gene: Kinbote_28 Start: 24633, Stop: 24989, Start Num: 60

Candidate Starts for Kinbote_28:

(Start: 60 @24633 has 239 MA's), (71, 24684), (75, 24702), (77, 24741), (81, 24792), (82, 24795), (87, 24813), (90, 24828), (101, 24873), (105, 24909), (107, 24921), (114, 24957),

Gene: KingMidas_22 Start: 24298, Stop: 24639, Start Num: 63

Candidate Starts for KingMidas_22:

(Start: 63 @24298 has 212 MA's), (89, 24481), (96, 24511), (107, 24583), (109, 24589), (114, 24616),

Gene: Krakatau_22 Start: 23696, Stop: 24037, Start Num: 63

Candidate Starts for Krakatau_22:

(8, 23372), (Start: 50 @23642 has 1 MA's), (Start: 63 @23696 has 212 MA's), (75, 23765), (91, 23891), (96, 23909), (107, 23981), (109, 23987),

Gene: Kraw_31 Start: 25535, Stop: 25912, Start Num: 60

Candidate Starts for Kraw_31:

(Start: 60 @25535 has 239 MA's), (82, 25700), (90, 25748), (94, 25760), (101, 25793), (107, 25844), (111, 25865), (114, 25874),

Gene: KristaRAM_22 Start: 23671, Stop: 24012, Start Num: 63

Candidate Starts for KristaRAM_22:

(8, 23347), (Start: 50 @23617 has 1 MA's), (Start: 63 @23671 has 212 MA's), (75, 23740), (91, 23866), (96, 23884), (107, 23956), (109, 23962), (114, 23989),

Gene: Kropertea_22 Start: 22589, Stop: 22930, Start Num: 63

Candidate Starts for Kropertea_22:

(Start: 63 @22589 has 212 MA's), (89, 22772), (99, 22817), (107, 22874), (113, 22904),

Gene: Krueger_29 Start: 23677, Stop: 24072, Start Num: 54

Candidate Starts for Krueger_29:

(Start: 54 @23677 has 1 MA's), (56, 23683), (Start: 60 @23716 has 239 MA's), (72, 23773), (73, 23776), (81, 23875), (92, 23917), (96, 23935), (114, 24037),

Gene: Kurt_46 Start: 37329, Stop: 37670, Start Num: 60

Candidate Starts for Kurt_46:

(Start: 60 @37329 has 239 MA's), (81, 37479), (88, 37503), (92, 37521), (93, 37524), (98, 37545), (101, 37560), (105, 37596), (110, 37629),

Gene: Kuwabara_31 Start: 23829, Stop: 24173, Start Num: 62

Candidate Starts for Kuwabara_31:

(Start: 62 @23829 has 22 MA's), (64, 23850), (77, 23940), (84, 24006), (89, 24021), (91, 24033), (95, 24048), (99, 24063), (104, 24102), (107, 24123), (113, 24147),

Gene: Lahirium_32 Start: 39771, Stop: 40136, Start Num: 60

Candidate Starts for Lahirium_32:

(Start: 60 @39771 has 239 MA's), (66, 39801), (71, 39822), (88, 39963), (90, 39975), (92, 39981), (102, 40038), (103, 40044), (114, 40110), (118, 40128),

Gene: LastHope_29 Start: 23580, Stop: 23936, Start Num: 60

Candidate Starts for LastHope_29:

(Start: 60 @23580 has 239 MA's), (92, 23781), (101, 23820), (114, 23901),

Gene: LaterM_29 Start: 24351, Stop: 24722, Start Num: 60

Candidate Starts for LaterM_29:

(Start: 60 @24351 has 239 MA's), (82, 24513), (92, 24567), (94, 24573), (101, 24606), (114, 24687),

Gene: Latretium_22 Start: 23678, Stop: 24019, Start Num: 63

Candidate Starts for Latretium_22:

(8, 23354), (Start: 50 @23624 has 1 MA's), (Start: 63 @23678 has 212 MA's), (75, 23747), (91, 23873), (96, 23891), (107, 23963), (109, 23969), (114, 23996),

Gene: LeMond_28 Start: 23640, Stop: 24014, Start Num: 60

Candidate Starts for LeMond_28:

(Start: 60 @23640 has 239 MA's), (75, 23712), (76, 23733), (82, 23805), (101, 23898),

Gene: Leozinho_22 Start: 22844, Stop: 23185, Start Num: 63

Candidate Starts for Leozinho_22:

(Start: 50 @22790 has 1 MA's), (Start: 63 @22844 has 212 MA's), (75, 22913), (89, 23027), (96, 23057), (107, 23129), (109, 23135), (114, 23162), (117, 23177),

Gene: Leperchaun_21 Start: 23051, Stop: 23392, Start Num: 63

Candidate Starts for Leperchaun_21:

(24, 22865), (Start: 50 @22991 has 1 MA's), (Start: 63 @23051 has 212 MA's), (75, 23120), (89, 23234), (103, 23306), (109, 23342),

Gene: Leroy_32 Start: 24479, Stop: 24823, Start Num: 62

Candidate Starts for Leroy_32:

(Start: 62 @24479 has 22 MA's), (64, 24500), (77, 24590), (84, 24656), (89, 24671), (91, 24683), (95, 24698), (99, 24713), (104, 24752), (107, 24773), (113, 24797),

Gene: Lidong_32 Start: 39505, Stop: 39870, Start Num: 60

Candidate Starts for Lidong_32:

(Start: 60 @39505 has 239 MA's), (66, 39535), (71, 39556), (88, 39697), (90, 39709), (92, 39715), (102, 39772), (103, 39778), (114, 39844), (118, 39862),

Gene: LilHazelnut_28 Start: 24633, Stop: 24989, Start Num: 60

Candidate Starts for LilHazelnut_28:

(Start: 60 @24633 has 239 MA's), (71, 24684), (75, 24702), (77, 24741), (81, 24792), (82, 24795), (87, 24813), (90, 24828), (101, 24873), (105, 24909), (107, 24921), (114, 24957),

Gene: LilMoolah_21 Start: 23168, Stop: 23509, Start Num: 63

Candidate Starts for LilMoolah_21:

(24, 22982), (Start: 50 @23108 has 1 MA's), (Start: 63 @23168 has 212 MA's), (75, 23237), (89, 23351), (103, 23423), (109, 23459), (116, 23498),

Gene: LilPharaoh_25 Start: 23944, Stop: 24318, Start Num: 60

Candidate Starts for LilPharaoh_25:

(Start: 60 @23944 has 239 MA's), (67, 23980), (73, 24007), (88, 24145), (111, 24274), (114, 24283),

Gene: LindNT_29 Start: 24385, Stop: 24756, Start Num: 60

Candidate Starts for LindNT_29:

(Start: 60 @24385 has 239 MA's), (82, 24547), (92, 24601), (94, 24607), (96, 24619), (101, 24640), (114, 24721),

Gene: LitninMcQueen_31 Start: 24286, Stop: 24639, Start Num: 59

Candidate Starts for LitninMcQueen_31:

(Start: 59 @24286 has 1 MA's), (Start: 62 @24292 has 22 MA's), (64, 24313), (66, 24325), (77, 24403), (83, 24466), (84, 24469), (89, 24484), (91, 24496), (95, 24511), (107, 24589), (113, 24613),

Gene: LittleE_42 Start: 36591, Stop: 36932, Start Num: 63

Candidate Starts for LittleE_42:

(8, 36267), (Start: 50 @36537 has 1 MA's), (Start: 63 @36591 has 212 MA's), (75, 36660), (91, 36786), (96, 36804), (107, 36876), (109, 36882), (114, 36909),

Gene: LittleShirley_22 Start: 22819, Stop: 23160, Start Num: 63

Candidate Starts for LittleShirley_22:

(8, 22495), (Start: 50 @22765 has 1 MA's), (Start: 63 @22819 has 212 MA's), (75, 22888), (89, 23002), (96, 23032), (107, 23104), (109, 23110), (114, 23137),

Gene: Lizziana_21 Start: 23043, Stop: 23384, Start Num: 63

Candidate Starts for Lizziana_21:

(24, 22857), (Start: 50 @22983 has 1 MA's), (Start: 63 @23043 has 212 MA's), (75, 23112), (89, 23226), (103, 23298), (109, 23334), (116, 23373),

Gene: Llama_21 Start: 23238, Stop: 23579, Start Num: 63

Candidate Starts for Llama_21:

(Start: 63 @23238 has 212 MA's), (91, 23433), (96, 23451), (109, 23529),

Gene: Llij_21 Start: 22984, Stop: 23325, Start Num: 63

Candidate Starts for Llij_21:

(8, 22660), (Start: 50 @22930 has 1 MA's), (Start: 63 @22984 has 212 MA's), (75, 23053), (91, 23179), (96, 23197), (107, 23269), (109, 23275), (114, 23302),

Gene: Llorens_29 Start: 24453, Stop: 24824, Start Num: 60

Candidate Starts for Llorens_29:

(Start: 60 @24453 has 239 MA's), (82, 24615), (92, 24669), (96, 24687), (114, 24789),

Gene: Lollipop1437_52 Start: 38302, Stop: 38646, Start Num: 60

Candidate Starts for Lollipop1437_52:

(Start: 60 @38302 has 239 MA's), (68, 38344), (88, 38476), (90, 38488), (101, 38533), (105, 38569),

Gene: Lorde_22 Start: 22820, Stop: 23161, Start Num: 63

Candidate Starts for Lorde_22:

(8, 22496), (Start: 50 @22766 has 1 MA's), (Start: 63 @22820 has 212 MA's), (75, 22889), (91, 23015), (96, 23033), (107, 23105), (109, 23111), (114, 23138),

Gene: Luke_28 Start: 24588, Stop: 24944, Start Num: 60

Candidate Starts for Luke_28:

(Start: 60 @24588 has 239 MA's), (71, 24639), (75, 24657), (77, 24696), (81, 24747), (82, 24750), (87, 24768), (90, 24783), (101, 24828), (105, 24864), (107, 24876), (114, 24912),

Gene: Luker_33 Start: 39724, Stop: 40089, Start Num: 60

Candidate Starts for Luker_33:

(Start: 60 @39724 has 239 MA's), (66, 39754), (71, 39775), (88, 39916), (90, 39928), (92, 39934), (102, 39991), (103, 39997), (114, 40063), (118, 40081),

Gene: Luna22_28 Start: 24633, Stop: 24989, Start Num: 60

Candidate Starts for Luna22_28:

(Start: 60 @24633 has 239 MA's), (71, 24684), (75, 24702), (77, 24741), (81, 24792), (82, 24795), (87, 24813), (90, 24828), (101, 24873), (105, 24909), (107, 24921), (114, 24957),

Gene: LunaBlu_22 Start: 23078, Stop: 23419, Start Num: 63

Candidate Starts for LunaBlu_22:

(8, 22754), (Start: 50 @23024 has 1 MA's), (Start: 63 @23078 has 212 MA's), (75, 23147), (91, 23273), (96, 23291), (107, 23363), (109, 23369), (114, 23396),

Gene: Lunahalos_29 Start: 24453, Stop: 24824, Start Num: 60

Candidate Starts for Lunahalos_29:

(Start: 60 @24453 has 239 MA's), (82, 24615), (92, 24669), (96, 24687), (114, 24789),

Gene: Lutum_32 Start: 24618, Stop: 24962, Start Num: 62

Candidate Starts for Lutum_32:

(51, 24567), (Start: 62 @24618 has 22 MA's), (64, 24639), (66, 24651), (77, 24729), (84, 24795), (89, 24810), (95, 24837), (99, 24852), (104, 24891), (107, 24912), (113, 24936),

Gene: MacKat_30 Start: 24430, Stop: 24801, Start Num: 60

Candidate Starts for MacKat_30:

(Start: 60 @24430 has 239 MA's), (82, 24592), (92, 24646), (96, 24664), (114, 24766),

Gene: MacnCheese_30 Start: 25401, Stop: 25757, Start Num: 60

Candidate Starts for MacnCheese_30:

(Start: 60 @25401 has 239 MA's), (66, 25431), (73, 25461), (86, 25578), (92, 25602), (94, 25608), (96, 25620), (114, 25722),

Gene: Magritte_25 Start: 23502, Stop: 23846, Start Num: 62

Candidate Starts for Magritte_25:

(Start: 62 @23502 has 22 MA's), (91, 23703), (103, 23763), (108, 23796),

Gene: Magritte_26 Start: 23861, Stop: 24211, Start Num: 119

Candidate Starts for Magritte_26:

(1, 22814), (2, 23015), (17, 23264), (34, 23372), (100, 23735), (Start: 119 @23861 has 1 MA's), (120, 24053), (121, 24065), (122, 24089),

Gene: Mahavrat_21 Start: 22990, Stop: 23331, Start Num: 63

Candidate Starts for Mahavrat_21:

(Start: 63 @22990 has 212 MA's), (89, 23173), (96, 23203), (107, 23275), (109, 23281), (114, 23308), (117, 23323),

Gene: Malthus_31 Start: 25535, Stop: 25912, Start Num: 60

Candidate Starts for Malthus_31:

(Start: 60 @25535 has 239 MA's), (82, 25700), (90, 25748), (94, 25760), (101, 25793), (107, 25844), (111, 25865), (114, 25874),

Gene: Mandlovu_21 Start: 23039, Stop: 23380, Start Num: 63

Candidate Starts for Mandlovu_21:

(8, 22715), (Start: 50 @22985 has 1 MA's), (Start: 63 @23039 has 212 MA's), (75, 23108), (91, 23234), (96, 23252), (107, 23324), (109, 23330), (114, 23357),

Gene: Mantra_21 Start: 23097, Stop: 23438, Start Num: 63

Candidate Starts for Mantra_21:

(Start: 50 @23043 has 1 MA's), (Start: 63 @23097 has 212 MA's), (75, 23166), (89, 23280), (96, 23310), (107, 23382), (109, 23388), (114, 23415), (117, 23430),

Gene: Maravista_21 Start: 22944, Stop: 23285, Start Num: 63

Candidate Starts for Maravista_21:

(8, 22620), (Start: 50 @22890 has 1 MA's), (Start: 63 @22944 has 212 MA's), (75, 23013), (91, 23139), (96, 23157), (107, 23229), (109, 23235), (114, 23262),

Gene: Marcoliusprime_27 Start: 22685, Stop: 23053, Start Num: 61

Candidate Starts for Marcoliusprime_27:

(57, 22649), (Start: 61 @22685 has 12 MA's), (79, 22826), (82, 22847), (94, 22907), (96, 22919), (101, 22940),

Gene: Marietta_48 Start: 34164, Stop: 34508, Start Num: 60

Candidate Starts for Marietta_48:

(Start: 60 @34164 has 239 MA's), (87, 34335), (98, 34380),

Gene: MarkPhew_29 Start: 23541, Stop: 23915, Start Num: 60

Candidate Starts for MarkPhew_29:

(Start: 60 @23541 has 239 MA's), (75, 23613), (82, 23706), (101, 23799), (117, 23895),

Gene: Marker_22 Start: 22847, Stop: 23188, Start Num: 63

Candidate Starts for Marker_22:

(8, 22523), (Start: 50 @22793 has 1 MA's), (Start: 63 @22847 has 212 MA's), (75, 22916), (91, 23042), (96, 23060), (107, 23132), (109, 23138), (114, 23165), (117, 23180),

Gene: Marshawn_30 Start: 24186, Stop: 24560, Start Num: 60

Candidate Starts for Marshawn_30:

(Start: 60 @24186 has 239 MA's), (67, 24222), (75, 24258), (94, 24411), (98, 24429), (111, 24516),

Gene: Martik_21 Start: 23070, Stop: 23411, Start Num: 63

Candidate Starts for Martik_21:

(24, 22884), (Start: 50 @23010 has 1 MA's), (Start: 63 @23070 has 212 MA's), (75, 23139), (89, 23253), (103, 23325), (109, 23361), (116, 23400),

Gene: Mattes_21 Start: 23034, Stop: 23375, Start Num: 63

Candidate Starts for Mattes_21:

(24, 22848), (Start: 50 @22974 has 1 MA's), (Start: 63 @23034 has 212 MA's), (75, 23103), (89, 23217), (103, 23289), (109, 23325), (116, 23364),

Gene: McMater_29 Start: 23775, Stop: 24149, Start Num: 60

Candidate Starts for McMater_29:

(Start: 60 @23775 has 239 MA's), (67, 23811), (73, 23838), (94, 24000), (96, 24012), (101, 24033), (114, 24114),

Gene: Mdavu_25 Start: 23932, Stop: 24306, Start Num: 60

Candidate Starts for Mdavu_25:

(Start: 60 @23932 has 239 MA's), (67, 23968), (73, 23995), (88, 24133), (111, 24262), (114, 24271),

Gene: MeaningOfLife_29 Start: 24389, Stop: 24760, Start Num: 60

Candidate Starts for MeaningOfLife_29:

(Start: 60 @24389 has 239 MA's), (82, 24551), (92, 24605), (96, 24623), (114, 24725),

Gene: Megsy_29 Start: 24388, Stop: 24759, Start Num: 60

Candidate Starts for Megsy_29:

(Start: 60 @24388 has 239 MA's), (82, 24550), (92, 24604), (96, 24622), (114, 24724),

Gene: Melissauren88_21 Start: 23029, Stop: 23370, Start Num: 63

Candidate Starts for Melissauren88_21:

(8, 22705), (Start: 50 @22975 has 1 MA's), (Start: 63 @23029 has 212 MA's), (75, 23098), (91, 23224), (96, 23242), (107, 23314), (109, 23320), (114, 23347),

Gene: MerCougar_48 Start: 37591, Stop: 37935, Start Num: 60

Candidate Starts for MerCougar_48:

(25, 37417), (Start: 60 @37591 has 239 MA's), (68, 37633), (72, 37648), (87, 37762), (88, 37765), (90, 37777), (101, 37822), (105, 37858),

Gene: MilleniumForce_22 Start: 23812, Stop: 24153, Start Num: 63

Candidate Starts for MilleniumForce_22:

(8, 23488), (Start: 50 @23758 has 1 MA's), (Start: 63 @23812 has 212 MA's), (75, 23881), (91, 24007), (96, 24025), (107, 24097), (109, 24103), (114, 24130),

Gene: Milly_27 Start: 22685, Stop: 23053, Start Num: 61

Candidate Starts for Milly_27:

(57, 22649), (Start: 61 @22685 has 12 MA's), (79, 22826), (82, 22847), (94, 22907), (96, 22919), (101, 22940),

Gene: Minerva_42 Start: 36876, Stop: 37217, Start Num: 63

Candidate Starts for Minerva_42:

(24, 36690), (Start: 50 @36816 has 1 MA's), (Start: 63 @36876 has 212 MA's), (75, 36945), (89, 37059), (103, 37131), (109, 37167),

Gene: MinionDave_22 Start: 23681, Stop: 24022, Start Num: 63

Candidate Starts for MinionDave_22:

(8, 23357), (Start: 50 @23627 has 1 MA's), (Start: 63 @23681 has 212 MA's), (75, 23750), (91, 23876), (96, 23894), (107, 23966), (109, 23972), (114, 23999),

Gene: Minnie_22 Start: 23541, Stop: 23882, Start Num: 63

Candidate Starts for Minnie_22:

(8, 23217), (Start: 50 @23487 has 1 MA's), (Start: 63 @23541 has 212 MA's), (75, 23610), (91, 23736), (96, 23754), (107, 23826), (109, 23832), (114, 23859),

Gene: Minos_33 Start: 39247, Stop: 39612, Start Num: 60

Candidate Starts for Minos_33:

(Start: 60 @39247 has 239 MA's), (66, 39277), (71, 39298), (88, 39439), (90, 39451), (92, 39457), (102, 39514), (103, 39520), (114, 39586), (118, 39604),

Gene: Misha28_22 Start: 22869, Stop: 23210, Start Num: 63

Candidate Starts for Misha28_22:

(Start: 63 @22869 has 212 MA's), (91, 23064), (96, 23082), (107, 23154), (109, 23160), (114, 23187),

Gene: MissDaisy_30 Start: 25378, Stop: 25755, Start Num: 60

Candidate Starts for MissDaisy_30:

(44, 25285), (46, 25300), (48, 25312), (51, 25330), (55, 25342), (Start: 60 @25378 has 239 MA's), (75, 25450), (82, 25543), (94, 25603), (101, 25636), (107, 25687), (111, 25708), (114, 25717),

Gene: MisterCuddles_21 Start: 22972, Stop: 23313, Start Num: 63

Candidate Starts for MisterCuddles_21:

(8, 22648), (Start: 50 @22918 has 1 MA's), (Start: 63 @22972 has 212 MA's), (75, 23041), (91, 23167), (96, 23185), (107, 23257), (109, 23263), (114, 23290),

Gene: Mitti_30 Start: 25536, Stop: 25913, Start Num: 60

Candidate Starts for Mitti_30:

(Start: 60 @25536 has 239 MA's), (82, 25701), (94, 25761), (101, 25794), (103, 25818), (107, 25845), (111, 25866), (114, 25875),

Gene: Modragons_21 Start: 23238, Stop: 23579, Start Num: 63

Candidate Starts for Modragons_21:

(Start: 63 @23238 has 212 MA's), (91, 23433), (96, 23451), (109, 23529),

Gene: Moonbeam_22 Start: 23490, Stop: 23831, Start Num: 63

Candidate Starts for Moonbeam_22:

(8, 23166), (Start: 50 @23436 has 1 MA's), (Start: 63 @23490 has 212 MA's), (75, 23559), (91, 23685), (96, 23703), (107, 23775), (109, 23781), (114, 23808),

Gene: MortyNRick_31 Start: 24135, Stop: 24479, Start Num: 62

Candidate Starts for MortyNRick_31:

(Start: 62 @24135 has 22 MA's), (64, 24156), (77, 24246), (84, 24312), (89, 24327), (91, 24339), (95, 24354), (99, 24369), (104, 24408), (107, 24429), (113, 24453),

Gene: Mova_22 Start: 22849, Stop: 23190, Start Num: 63

Candidate Starts for Mova_22:

(8, 22525), (Start: 50 @22795 has 1 MA's), (Start: 63 @22849 has 212 MA's), (75, 22918), (91, 23044), (96, 23062), (107, 23134), (109, 23140), (114, 23167),

Gene: Mozy_22 Start: 22899, Stop: 23240, Start Num: 63

Candidate Starts for Mozy_22:

(Start: 50 @22845 has 1 MA's), (Start: 63 @22899 has 212 MA's), (91, 23094), (96, 23112), (107, 23184), (109, 23190), (114, 23217),

Gene: MrMagoo_36 Start: 28939, Stop: 29283, Start Num: 63

Candidate Starts for MrMagoo_36:

(Start: 63 @28939 has 212 MA's), (78, 29077), (88, 29122), (89, 29125),

Gene: MrWormie_32 Start: 38408, Stop: 38773, Start Num: 60

Candidate Starts for MrWormie_32:

(Start: 60 @38408 has 239 MA's), (66, 38438), (71, 38459), (88, 38600), (90, 38612), (92, 38618), (102, 38675), (103, 38681), (114, 38747), (118, 38765),

Gene: Msay19_36 Start: 39181, Stop: 39546, Start Num: 60

Candidate Starts for Msay19_36:

(Start: 60 @39181 has 239 MA's), (75, 39250), (87, 39370), (90, 39385), (102, 39448),

Gene: Mufasa_27 Start: 22723, Stop: 23091, Start Num: 61

Candidate Starts for Mufasa_27:

(57, 22687), (Start: 61 @22723 has 12 MA's), (73, 22783), (75, 22792), (79, 22864), (82, 22885), (94, 22945), (101, 22978),

Gene: MulchExplorer_24 Start: 24120, Stop: 24461, Start Num: 63

Candidate Starts for MulchExplorer_24:

(8, 23796), (Start: 50 @24066 has 1 MA's), (Start: 63 @24120 has 212 MA's), (75, 24189), (91, 24315), (96, 24333), (107, 24405), (109, 24411), (114, 24438),

Gene: Murucutumbu_29 Start: 24370, Stop: 24741, Start Num: 60

Candidate Starts for Murucutumbu_29:

(Start: 60 @24370 has 239 MA's), (82, 24532), (92, 24586), (94, 24592), (96, 24604), (101, 24625), (114, 24706),

Gene: Mutaforma13_21 Start: 23045, Stop: 23386, Start Num: 63

Candidate Starts for Mutaforma13_21:

(8, 22721), (Start: 50 @22991 has 1 MA's), (Start: 63 @23045 has 212 MA's), (75, 23114), (91, 23240), (96, 23258), (107, 23330), (109, 23336), (114, 23363),

Gene: Mynx_29 Start: 24436, Stop: 24807, Start Num: 60

Candidate Starts for Mynx_29:

(Start: 60 @24436 has 239 MA's), (82, 24598), (92, 24652), (96, 24670), (101, 24691), (114, 24772),

Gene: NadineRae_46 Start: 33411, Stop: 33755, Start Num: 60

Candidate Starts for NadineRae_46:

(55, 33375), (Start: 60 @33411 has 239 MA's), (87, 33582), (98, 33627),

Gene: NatB6_46 Start: 36386, Stop: 36727, Start Num: 60

Candidate Starts for NatB6_46:

(Start: 60 @36386 has 239 MA's), (81, 36536), (88, 36560), (92, 36578), (93, 36581), (98, 36602), (101, 36617), (105, 36653), (110, 36686),

Gene: Nebkiss_25 Start: 25559, Stop: 25900, Start Num: 63

Candidate Starts for Nebkiss_25:

(10, 25262), (11, 25265), (13, 25283), (15, 25286), (19, 25349), (28, 25397), (31, 25415), (37, 25430), (39, 25442), (Start: 63 @25559 has 212 MA's), (89, 25742), (96, 25772), (103, 25814), (117, 25892),

Gene: Neoevie_32 Start: 39511, Stop: 39876, Start Num: 60

Candidate Starts for Neoevie_32:

(Start: 60 @39511 has 239 MA's), (66, 39541), (71, 39562), (88, 39703), (90, 39715), (92, 39721), (102, 39778), (103, 39784), (114, 39850), (118, 39868),

Gene: Newt_33 Start: 39738, Stop: 40103, Start Num: 60

Candidate Starts for Newt_33:

(Start: 60 @39738 has 239 MA's), (66, 39768), (71, 39789), (88, 39930), (90, 39942), (92, 39948), (102, 40005), (103, 40011), (114, 40077), (118, 40095),

Gene: Nibb_28 Start: 23682, Stop: 24053, Start Num: 60

Candidate Starts for Nibb_28:

(Start: 60 @23682 has 239 MA's), (75, 23754), (82, 23847), (101, 23940),

Gene: Nikao_25 Start: 23944, Stop: 24318, Start Num: 60

Candidate Starts for Nikao_25:

(Start: 60 @23944 has 239 MA's), (67, 23980), (73, 24007), (88, 24145), (111, 24274), (114, 24283),

Gene: Niklas_29 Start: 23778, Stop: 24152, Start Num: 60

Candidate Starts for Niklas_29:

(Start: 60 @23778 has 239 MA's), (67, 23814), (73, 23841), (94, 24003), (96, 24015), (101, 24036), (114, 24117),

Gene: Nimbo_21 Start: 22997, Stop: 23338, Start Num: 63

Candidate Starts for Nimbo_21:

(Start: 63 @22997 has 212 MA's), (75, 23066), (91, 23192), (96, 23210), (107, 23282), (109, 23288), (114, 23315),

Gene: Nimi13_32 Start: 39256, Stop: 39621, Start Num: 60

Candidate Starts for Nimi13_32:

(Start: 60 @39256 has 239 MA's), (66, 39286), (71, 39307), (88, 39448), (90, 39460), (92, 39466), (102, 39523), (103, 39529), (114, 39595), (118, 39613),

Gene: Nitzel_22 Start: 23731, Stop: 24072, Start Num: 63

Candidate Starts for Nitzel_22:

(Start: 50 @23677 has 1 MA's), (Start: 63 @23731 has 212 MA's), (75, 23800), (91, 23926), (96, 23944), (107, 24016), (109, 24022), (114, 24049),

Gene: Nivrat_21 Start: 23042, Stop: 23383, Start Num: 63

Candidate Starts for Nivrat_21:

(24, 22856), (Start: 50 @22982 has 1 MA's), (Start: 63 @23042 has 212 MA's), (75, 23111), (89, 23225), (103, 23297), (109, 23333), (116, 23372),

Gene: NormanBulbieJr_21 Start: 23057, Stop: 23398, Start Num: 63

Candidate Starts for NormanBulbieJr_21:

(24, 22871), (Start: 50 @22997 has 1 MA's), (Start: 63 @23057 has 212 MA's), (75, 23126), (89, 23240), (103, 23312), (109, 23348), (116, 23387),

Gene: NosilaM_50 Start: 37288, Stop: 37629, Start Num: 60

Candidate Starts for NosilaM_50:

(Start: 60 @37288 has 239 MA's), (81, 37438), (98, 37504),

Gene: November_28 Start: 24726, Stop: 25097, Start Num: 60

Candidate Starts for November_28:

(Start: 60 @24726 has 239 MA's), (82, 24888), (92, 24942), (94, 24948), (101, 24981), (107, 25032),

Gene: NovumRegina_46 Start: 36695, Stop: 37036, Start Num: 60

Candidate Starts for NovumRegina_46:

(Start: 60 @36695 has 239 MA's), (81, 36845), (88, 36869), (92, 36887), (93, 36890), (98, 36911), (101, 36926), (105, 36962), (110, 36995),

Gene: Nutello_25 Start: 23944, Stop: 24318, Start Num: 60

Candidate Starts for Nutello_25:

(Start: 60 @23944 has 239 MA's), (67, 23980), (73, 24007), (88, 24145), (111, 24274), (114, 24283),

Gene: OBUpride_28 Start: 24627, Stop: 24983, Start Num: 60

Candidate Starts for OBUpride_28:

(Start: 60 @24627 has 239 MA's), (71, 24678), (75, 24696), (77, 24735), (81, 24786), (82, 24789), (87, 24807), (90, 24822), (101, 24867), (105, 24903), (107, 24915), (114, 24951),

Gene: ODay_36 Start: 26363, Stop: 26710, Start Num: 62

Candidate Starts for ODay_36:

(Start: 59 @26357 has 1 MA's), (Start: 62 @26363 has 22 MA's), (64, 26384), (66, 26396), (77, 26474), (83, 26537), (84, 26540), (89, 26555), (91, 26567), (95, 26582), (107, 26660), (113, 26684),

Gene: Ochi17_21 Start: 23238, Stop: 23579, Start Num: 63

Candidate Starts for Ochi17_21:

(Start: 63 @23238 has 212 MA's), (91, 23433), (96, 23451), (109, 23529),

Gene: OfUltron_21 Start: 23238, Stop: 23579, Start Num: 63

Candidate Starts for OfUltron_21:

(Start: 63 @23238 has 212 MA's), (91, 23433), (96, 23451), (109, 23529),

Gene: Oksu_22 Start: 23083, Stop: 23424, Start Num: 63

Candidate Starts for Oksu_22:

(Start: 63 @23083 has 212 MA's), (91, 23278), (96, 23296), (109, 23374),

Gene: OldBen_21 Start: 22967, Stop: 23308, Start Num: 63

Candidate Starts for OldBen_21:

(Start: 63 @22967 has 212 MA's), (75, 23036), (91, 23162), (96, 23180), (107, 23252), (109, 23258), (114, 23285),

Gene: OlympiaSaint_21 Start: 23257, Stop: 23598, Start Num: 63

Candidate Starts for OlympiaSaint_21:

(24, 23071), (Start: 50 @23197 has 1 MA's), (Start: 63 @23257 has 212 MA's), (75, 23326), (89, 23440), (103, 23512), (109, 23548), (116, 23587),

Gene: Omega_41 Start: 37050, Stop: 37391, Start Num: 63

Candidate Starts for Omega_41:

(8, 36726), (Start: 50 @36996 has 1 MA's), (Start: 63 @37050 has 212 MA's), (75, 37119), (91, 37245), (96, 37263), (107, 37335), (109, 37341), (114, 37368),

Gene: OmniCritical_30 Start: 25520, Stop: 25897, Start Num: 60

Candidate Starts for OmniCritical_30:

(Start: 60 @25520 has 239 MA's), (75, 25592), (82, 25685), (90, 25733), (94, 25745), (101, 25778), (103, 25802), (107, 25829), (111, 25850), (114, 25859),

Gene: Optimus_40 Start: 36394, Stop: 36735, Start Num: 63

Candidate Starts for Optimus_40:

(8, 36070), (Start: 50 @36340 has 1 MA's), (Start: 63 @36394 has 212 MA's), (75, 36463), (91, 36589), (96, 36607), (107, 36679), (109, 36685), (114, 36712),

Gene: Oscar_28 Start: 23641, Stop: 24015, Start Num: 60

Candidate Starts for Oscar_28:

(Start: 60 @23641 has 239 MA's), (75, 23713), (76, 23734), (82, 23806), (101, 23899),

Gene: Outis_48 Start: 37285, Stop: 37629, Start Num: 60

Candidate Starts for Outis_48:

(25, 37111), (Start: 60 @37285 has 239 MA's), (68, 37327), (72, 37342), (87, 37456), (88, 37459), (90, 37471), (101, 37516), (105, 37552),

Gene: Ovechkin_21 Start: 23028, Stop: 23369, Start Num: 63

Candidate Starts for Ovechkin_21:

(8, 22704), (Start: 50 @22974 has 1 MA's), (Start: 63 @23028 has 212 MA's), (75, 23097), (91, 23223), (96, 23241), (107, 23313), (109, 23319), (114, 23346),

Gene: OwlsT2W_23 Start: 23429, Stop: 23770, Start Num: 63

Candidate Starts for OwlsT2W_23:

(24, 23243), (Start: 50 @23369 has 1 MA's), (Start: 63 @23429 has 212 MA's), (75, 23498), (89, 23612), (96, 23642), (103, 23684), (109, 23720),

Gene: PHappiness_21 Start: 22975, Stop: 23316, Start Num: 63

Candidate Starts for PHappiness_21:

(Start: 63 @22975 has 212 MA's), (75, 23044), (91, 23170), (96, 23188), (107, 23260), (109, 23266), (114, 23293),

Gene: PMC_21 Start: 22984, Stop: 23325, Start Num: 63

Candidate Starts for PMC_21:

(8, 22660), (Start: 50 @22930 has 1 MA's), (Start: 63 @22984 has 212 MA's), (75, 23053), (91, 23179), (96, 23197), (107, 23269), (109, 23275), (114, 23302),

Gene: Pacc40_21 Start: 23165, Stop: 23506, Start Num: 63

Candidate Starts for Pacc40_21:

(Start: 63 @23165 has 212 MA's), (75, 23234), (91, 23360), (96, 23378), (107, 23450), (109, 23456), (114, 23483),

Gene: Padfoot_29 Start: 24453, Stop: 24824, Start Num: 60

Candidate Starts for Padfoot_29:

(Start: 60 @24453 has 239 MA's), (82, 24615), (92, 24669), (114, 24789),

Gene: Padpat_29 Start: 24413, Stop: 24784, Start Num: 60

Candidate Starts for Padpat_29:

(Start: 60 @24413 has 239 MA's), (82, 24575), (92, 24629), (96, 24647), (114, 24749),

Gene: Patio_50 Start: 37538, Stop: 37882, Start Num: 60

Candidate Starts for Patio_50:

(Start: 60 @37538 has 239 MA's), (68, 37580), (88, 37712), (90, 37724), (101, 37769), (105, 37805),

Gene: Patt_30 Start: 25354, Stop: 25731, Start Num: 60

Candidate Starts for Patt_30:

(7, 25009), (9, 25027), (12, 25069), (26, 25192), (30, 25213), (38, 25240), (41, 25252), (47, 25282),
(Start: 60 @25354 has 239 MA's), (75, 25426), (82, 25519), (94, 25579), (101, 25612), (107, 25663),
(111, 25684), (114, 25693),

Gene: Peanam_29 Start: 23775, Stop: 24149, Start Num: 60

Candidate Starts for Peanam_29:

(Start: 60 @23775 has 239 MA's), (67, 23811), (73, 23838), (94, 24000), (96, 24012), (101, 24033),
(114, 24114),

Gene: Peel_29 Start: 24453, Stop: 24824, Start Num: 60

Candidate Starts for Peel_29:

(Start: 60 @24453 has 239 MA's), (82, 24615), (92, 24669), (96, 24687), (114, 24789),

Gene: Periwinkle_34 Start: 24923, Stop: 25267, Start Num: 62

Candidate Starts for Periwinkle_34:

(Start: 62 @24923 has 22 MA's), (64, 24944), (77, 25034), (84, 25100), (89, 25115), (91, 25127), (95,
25142), (99, 25157), (104, 25196), (107, 25217), (113, 25241),

Gene: Phabuloso_31 Start: 24186, Stop: 24530, Start Num: 62

Candidate Starts for Phabuloso_31:

(Start: 62 @24186 has 22 MA's), (64, 24207), (77, 24297), (84, 24363), (89, 24378), (91, 24390), (95,
24405), (99, 24420), (104, 24459), (107, 24480), (113, 24504),

Gene: Phalconet_21 Start: 23043, Stop: 23384, Start Num: 63

Candidate Starts for Phalconet_21:

(8, 22719), (Start: 50 @22989 has 1 MA's), (Start: 63 @23043 has 212 MA's), (75, 23112), (91, 23238),
(96, 23256), (107, 23328), (109, 23334), (114, 23361),

Gene: Pharb_28 Start: 24691, Stop: 25050, Start Num: 60

Candidate Starts for Pharb_28:

(49, 24628), (Start: 60 @24691 has 239 MA's), (73, 24754), (86, 24871), (92, 24895), (94, 24901), (96,
24913), (114, 25015),

Gene: Phasih_22 Start: 23540, Stop: 23881, Start Num: 63

Candidate Starts for Phasih_22:

(Start: 50 @23486 has 1 MA's), (Start: 63 @23540 has 212 MA's), (75, 23609), (89, 23723), (96,
23753), (107, 23825), (109, 23831), (114, 23858),

Gene: Phatniss_22 Start: 23502, Stop: 23843, Start Num: 63

Candidate Starts for Phatniss_22:

(8, 23178), (Start: 50 @23448 has 1 MA's), (Start: 63 @23502 has 212 MA's), (75, 23571), (89, 23685),
(96, 23715), (107, 23787), (109, 23793), (114, 23820), (117, 23835),

Gene: PhelpsODU_29 Start: 23875, Stop: 24231, Start Num: 60

Candidate Starts for PhelpsODU_29:

(Start: 60 @23875 has 239 MA's), (73, 23935), (81, 24034), (92, 24076), (96, 24094), (114, 24196),

Gene: PhesterPhotato_21 Start: 23020, Stop: 23361, Start Num: 63

Candidate Starts for PhesterPhotato_21:

(8, 22696), (Start: 50 @22966 has 1 MA's), (Start: 63 @23020 has 212 MA's), (75, 23089), (91, 23215), (96, 23233), (107, 23305), (109, 23311), (114, 23338),

Gene: Philus_21 Start: 22999, Stop: 23340, Start Num: 63

Candidate Starts for Philus_21:

(Start: 63 @22999 has 212 MA's), (75, 23068), (91, 23194), (96, 23212), (107, 23284), (109, 23290),

Gene: Phistory_33 Start: 25244, Stop: 25588, Start Num: 62

Candidate Starts for Phistory_33:

(Start: 62 @25244 has 22 MA's), (64, 25265), (77, 25355), (84, 25421), (89, 25436), (91, 25448), (95, 25463), (99, 25478), (104, 25517), (107, 25538), (113, 25562),

Gene: Phomeo_45 Start: 36964, Stop: 37305, Start Num: 60

Candidate Starts for Phomeo_45:

(Start: 60 @36964 has 239 MA's), (81, 37114), (88, 37138), (92, 37156), (93, 37159), (98, 37180), (101, 37195), (105, 37231), (110, 37264),

Gene: Phrank_29 Start: 23825, Stop: 24181, Start Num: 60

Candidate Starts for Phrank_29:

(Start: 60 @23825 has 239 MA's), (73, 23885), (81, 23984), (92, 24026), (96, 24044), (101, 24065), (114, 24146),

Gene: Piatt_29 Start: 24453, Stop: 24824, Start Num: 60

Candidate Starts for Piatt_29:

(Start: 60 @24453 has 239 MA's), (82, 24615), (92, 24669), (114, 24789),

Gene: Piper2020_22 Start: 22870, Stop: 23211, Start Num: 63

Candidate Starts for Piper2020_22:

(20, 22672), (21, 22675), (22, 22681), (23, 22684), (27, 22708), (53, 22822), (Start: 63 @22870 has 212 MA's), (75, 22939), (89, 23053), (96, 23083), (107, 23155), (109, 23161), (114, 23188),

Gene: Pixie_29 Start: 24881, Stop: 25237, Start Num: 60

Candidate Starts for Pixie_29:

(Start: 60 @24881 has 239 MA's), (66, 24911), (73, 24941), (86, 25058), (92, 25082), (94, 25088), (96, 25100), (101, 25121), (114, 25202),

Gene: Pleakley_54 Start: 36493, Stop: 36837, Start Num: 60

Candidate Starts for Pleakley_54:

(Start: 60 @36493 has 239 MA's), (87, 36664), (90, 36679),

Gene: Plumbus_22 Start: 22827, Stop: 23168, Start Num: 63

Candidate Starts for Plumbus_22:

(8, 22503), (Start: 50 @22773 has 1 MA's), (Start: 63 @22827 has 212 MA's), (75, 22896), (91, 23022), (96, 23040), (107, 23112), (109, 23118), (114, 23145),

Gene: Poenanya_21 Start: 23135, Stop: 23476, Start Num: 63

Candidate Starts for Poenanya_21:

(8, 22811), (Start: 50 @23081 has 1 MA's), (Start: 63 @23135 has 212 MA's), (75, 23204), (91, 23330), (96, 23348), (107, 23420), (109, 23426), (114, 23453),

Gene: Pokerus_28 Start: 24370, Stop: 24741, Start Num: 60

Candidate Starts for Pokerus_28:

(Start: 60 @24370 has 239 MA's), (82, 24532), (92, 24586), (96, 24604), (114, 24706),

Gene: Poland_36 Start: 39160, Stop: 39525, Start Num: 60

Candidate Starts for Poland_36:

(Start: 60 @39160 has 239 MA's), (75, 39229), (87, 39349), (90, 39364), (102, 39427),

Gene: Polka14_22 Start: 23537, Stop: 23878, Start Num: 63

Candidate Starts for Polka14_22:

(Start: 63 @23537 has 212 MA's), (75, 23606), (91, 23732), (96, 23750), (107, 23822), (109, 23828), (114, 23855),

Gene: PopTart_21 Start: 23046, Stop: 23387, Start Num: 63

Candidate Starts for PopTart_21:

(Start: 50 @22992 has 1 MA's), (Start: 63 @23046 has 212 MA's), (91, 23241), (96, 23259), (107, 23331), (109, 23337), (114, 23364),

Gene: Priscilla_21 Start: 23071, Stop: 23412, Start Num: 63

Candidate Starts for Priscilla_21:

(24, 22885), (Start: 50 @23011 has 1 MA's), (Start: 63 @23071 has 212 MA's), (75, 23140), (89, 23254), (103, 23326), (109, 23362), (116, 23401),

Gene: Prithvi_29 Start: 24385, Stop: 24756, Start Num: 60

Candidate Starts for Prithvi_29:

(Start: 60 @24385 has 239 MA's), (82, 24547), (92, 24601), (94, 24607), (96, 24619), (101, 24640), (114, 24721),

Gene: Pupper_128 Start: 84375, Stop: 84734, Start Num: 60

Candidate Starts for Pupper_128:

(Start: 60 @84375 has 239 MA's), (90, 84579), (97, 84606), (98, 84609),

Gene: Quby_22 Start: 22574, Stop: 22915, Start Num: 63

Candidate Starts for Quby_22:

(Start: 63 @22574 has 212 MA's), (75, 22643), (83, 22739), (85, 22745), (89, 22757), (99, 22802), (107, 22859), (113, 22889),

Gene: QuickMath_22 Start: 24344, Stop: 24685, Start Num: 63

Candidate Starts for QuickMath_22:

(8, 24020), (Start: 50 @24290 has 1 MA's), (Start: 63 @24344 has 212 MA's), (75, 24413), (91, 24539), (96, 24557), (107, 24629), (109, 24635), (114, 24662),

Gene: Quico_22 Start: 22821, Stop: 23162, Start Num: 63

Candidate Starts for Quico_22:

(Start: 63 @22821 has 212 MA's), (75, 22890), (91, 23016), (96, 23034), (107, 23106), (109, 23112), (114, 23139),

Gene: QuincyRose_28 Start: 24433, Stop: 24804, Start Num: 60

Candidate Starts for QuincyRose_28:

(Start: 60 @24433 has 239 MA's), (82, 24595), (92, 24649), (96, 24667), (114, 24769),

Gene: Radiance_21 Start: 22981, Stop: 23322, Start Num: 63

Candidate Starts for Radiance_21:

(8, 22657), (Start: 50 @22927 has 1 MA's), (Start: 63 @22981 has 212 MA's), (75, 23050), (91, 23176), (96, 23194), (107, 23266), (109, 23272),

Gene: Ramen_29 Start: 24419, Stop: 24790, Start Num: 60
Candidate Starts for Ramen_29:
(Start: 60 @24419 has 239 MA's), (82, 24581), (92, 24635), (96, 24653), (114, 24755),

Gene: Ramsey_22 Start: 23030, Stop: 23371, Start Num: 63
Candidate Starts for Ramsey_22:
(8, 22706), (Start: 50 @22976 has 1 MA's), (Start: 63 @23030 has 212 MA's), (75, 23099), (91, 23225),
(96, 23243), (107, 23315), (109, 23321), (114, 23348),

Gene: Rapunzel97_29 Start: 24420, Stop: 24791, Start Num: 60
Candidate Starts for Rapunzel97_29:
(Start: 60 @24420 has 239 MA's), (82, 24582), (92, 24636), (96, 24654), (114, 24756),

Gene: RedBird_21 Start: 22958, Stop: 23299, Start Num: 63
Candidate Starts for RedBird_21:
(8, 22634), (Start: 50 @22904 has 1 MA's), (Start: 63 @22958 has 212 MA's), (75, 23027), (91, 23153),
(96, 23171), (107, 23243), (109, 23249), (114, 23276),

Gene: RedRaider_54 Start: 39557, Stop: 39904, Start Num: 60
Candidate Starts for RedRaider_54:
(Start: 60 @39557 has 239 MA's), (110, 39860), (116, 39884),

Gene: Reptar3000_30 Start: 25347, Stop: 25724, Start Num: 60
Candidate Starts for Reptar3000_30:
(47, 25275), (Start: 60 @25347 has 239 MA's), (82, 25512), (94, 25572), (101, 25605), (107, 25656),
(111, 25677), (114, 25686),

Gene: Rey_36 Start: 29170, Stop: 29514, Start Num: 63
Candidate Starts for Rey_36:
(Start: 63 @29170 has 212 MA's), (71, 29221), (89, 29356),

Gene: Rialto_23 Start: 23510, Stop: 23851, Start Num: 63
Candidate Starts for Rialto_23:
(8, 23186), (Start: 50 @23456 has 1 MA's), (Start: 63 @23510 has 212 MA's), (75, 23579), (89, 23693),
(96, 23723), (107, 23795), (109, 23801), (114, 23828),

Gene: Richo_29 Start: 23775, Stop: 24149, Start Num: 60
Candidate Starts for Richo_29:
(Start: 60 @23775 has 239 MA's), (67, 23811), (73, 23838), (94, 24000), (96, 24012), (101, 24033),
(114, 24114),

Gene: Rita_21 Start: 23011, Stop: 23352, Start Num: 63
Candidate Starts for Rita_21:
(8, 22687), (Start: 50 @22957 has 1 MA's), (Start: 63 @23011 has 212 MA's), (75, 23080), (91, 23206),
(96, 23224), (107, 23296), (109, 23302), (114, 23329),

Gene: RitaG_21 Start: 23203, Stop: 23544, Start Num: 63
Candidate Starts for RitaG_21:
(24, 23017), (Start: 50 @23143 has 1 MA's), (Start: 63 @23203 has 212 MA's), (71, 23254), (75,
23272), (89, 23386), (96, 23416), (103, 23458), (107, 23488), (109, 23494),

Gene: Rockne_21 Start: 22984, Stop: 23325, Start Num: 63
Candidate Starts for Rockne_21:

(8, 22660), (Start: 50 @22930 has 1 MA's), (Start: 63 @22984 has 212 MA's), (75, 23053), (91, 23179), (96, 23197), (107, 23269), (109, 23275), (114, 23302),

Gene: RockyHorror_22 Start: 22855, Stop: 23196, Start Num: 63

Candidate Starts for RockyHorror_22:

(Start: 63 @22855 has 212 MA's), (75, 22924), (91, 23050), (96, 23068), (107, 23140), (109, 23146), (114, 23173),

Gene: Rosmarinus_29 Start: 24441, Stop: 24812, Start Num: 60

Candidate Starts for Rosmarinus_29:

(Start: 60 @24441 has 239 MA's), (82, 24603), (92, 24657), (96, 24675), (114, 24777),

Gene: Royals2015_21 Start: 23060, Stop: 23401, Start Num: 63

Candidate Starts for Royals2015_21:

(24, 22874), (Start: 50 @23000 has 1 MA's), (Start: 63 @23060 has 212 MA's), (75, 23129), (89, 23243), (103, 23315), (109, 23351),

Gene: Ruby_21 Start: 22972, Stop: 23313, Start Num: 63

Candidate Starts for Ruby_21:

(8, 22648), (Start: 50 @22918 has 1 MA's), (Start: 63 @22972 has 212 MA's), (75, 23041), (91, 23167), (96, 23185), (107, 23257), (109, 23263), (114, 23290),

Gene: SCentae_127 Start: 84528, Stop: 84887, Start Num: 60

Candidate Starts for SCentae_127:

(Start: 60 @84528 has 239 MA's), (90, 84732), (97, 84759), (98, 84762),

Gene: SG4_21 Start: 23149, Stop: 23490, Start Num: 63

Candidate Starts for SG4_21:

(8, 22825), (Start: 50 @23095 has 1 MA's), (Start: 63 @23149 has 212 MA's), (75, 23218), (91, 23344), (96, 23362), (107, 23434), (109, 23440), (114, 23467),

Gene: Saal_21 Start: 22977, Stop: 23318, Start Num: 63

Candidate Starts for Saal_21:

(Start: 63 @22977 has 212 MA's), (75, 23046), (91, 23172), (96, 23190), (107, 23262), (109, 23268),

Gene: Sabbb_22 Start: 23277, Stop: 23618, Start Num: 63

Candidate Starts for Sabbb_22:

(24, 23091), (Start: 50 @23217 has 1 MA's), (Start: 63 @23277 has 212 MA's), (75, 23346), (89, 23460), (96, 23490), (103, 23532), (109, 23568),

Gene: SamuelLPlaqson_29 Start: 24379, Stop: 24750, Start Num: 60

Candidate Starts for SamuelLPlaqson_29:

(Start: 60 @24379 has 239 MA's), (82, 24541), (92, 24595), (101, 24634),

Gene: Sandalphon_22 Start: 23555, Stop: 23896, Start Num: 63

Candidate Starts for Sandalphon_22:

(8, 23231), (Start: 50 @23501 has 1 MA's), (Start: 63 @23555 has 212 MA's), (75, 23624), (91, 23750), (96, 23768), (107, 23840), (109, 23846), (114, 23873),

Gene: Sassafras_21 Start: 23129, Stop: 23470, Start Num: 63

Candidate Starts for Sassafras_21:

(Start: 63 @23129 has 212 MA's), (75, 23198), (91, 23324), (96, 23342), (107, 23414), (109, 23420), (114, 23447), (117, 23462),

Gene: SassyB_21 Start: 23046, Stop: 23387, Start Num: 63

Candidate Starts for SassyB_21:

(Start: 50 @22992 has 1 MA's), (Start: 63 @23046 has 212 MA's), (91, 23241), (96, 23259), (107, 23331), (109, 23337), (114, 23364),

Gene: Scarlett_28 Start: 23642, Stop: 24016, Start Num: 60

Candidate Starts for Scarlett_28:

(Start: 60 @23642 has 239 MA's), (65, 23672), (75, 23714), (76, 23735), (82, 23807), (101, 23900),

Gene: Scottish_22 Start: 24298, Stop: 24639, Start Num: 63

Candidate Starts for Scottish_22:

(Start: 63 @24298 has 212 MA's), (75, 24367), (91, 24493), (96, 24511), (107, 24583), (109, 24589), (114, 24616),

Gene: Scuba_54 Start: 36567, Stop: 36911, Start Num: 60

Candidate Starts for Scuba_54:

(Start: 60 @36567 has 239 MA's), (87, 36738), (90, 36753),

Gene: Seabastian_21 Start: 23238, Stop: 23579, Start Num: 63

Candidate Starts for Seabastian_21:

(Start: 63 @23238 has 212 MA's), (91, 23433), (96, 23451), (109, 23529),

Gene: Seagreen_22 Start: 22842, Stop: 23183, Start Num: 63

Candidate Starts for Seagreen_22:

(8, 22518), (Start: 50 @22788 has 1 MA's), (Start: 63 @22842 has 212 MA's), (75, 22911), (91, 23037), (96, 23055), (107, 23127), (109, 23133), (114, 23160),

Gene: SgtBeansprout_25 Start: 23944, Stop: 24318, Start Num: 60

Candidate Starts for SgtBeansprout_25:

(Start: 60 @23944 has 239 MA's), (67, 23980), (73, 24007), (88, 24145), (111, 24274), (114, 24283),

Gene: Shadow1_28 Start: 23698, Stop: 24054, Start Num: 60

Candidate Starts for Shadow1_28:

(Start: 60 @23698 has 239 MA's), (73, 23758), (81, 23857), (92, 23899), (114, 24019),

Gene: Shaobing_29 Start: 23775, Stop: 24149, Start Num: 60

Candidate Starts for Shaobing_29:

(Start: 60 @23775 has 239 MA's), (67, 23811), (73, 23838), (94, 24000), (96, 24012), (101, 24033), (114, 24114),

Gene: ShawBrad_32 Start: 24466, Stop: 24810, Start Num: 62

Candidate Starts for ShawBrad_32:

(Start: 62 @24466 has 22 MA's), (64, 24487), (77, 24577), (84, 24643), (89, 24658), (91, 24670), (95, 24685), (99, 24700), (104, 24739), (107, 24760), (113, 24784),

Gene: ShedlockHolmes_29 Start: 25042, Stop: 25398, Start Num: 60

Candidate Starts for ShedlockHolmes_29:

(Start: 60 @25042 has 239 MA's), (66, 25072), (73, 25102), (92, 25243), (94, 25249), (101, 25282), (114, 25363),

Gene: Shelley_32 Start: 38732, Stop: 39097, Start Num: 60

Candidate Starts for Shelley_32:

(Start: 60 @38732 has 239 MA's), (66, 38762), (71, 38783), (88, 38924), (90, 38936), (92, 38942), (102, 38999), (103, 39005), (114, 39071), (118, 39089),

Gene: ShiLan_21 Start: 23069, Stop: 23410, Start Num: 63

Candidate Starts for ShiLan_21:

(24, 22883), (Start: 50 @23009 has 1 MA's), (Start: 63 @23069 has 212 MA's), (75, 23138), (89, 23252), (103, 23324), (109, 23360), (116, 23399),

Gene: ShiaSurprise_29 Start: 24453, Stop: 24824, Start Num: 60

Candidate Starts for ShiaSurprise_29:

(Start: 60 @24453 has 239 MA's), (82, 24615), (92, 24669), (114, 24789),

Gene: ShowerHandel_21 Start: 23070, Stop: 23411, Start Num: 63

Candidate Starts for ShowerHandel_21:

(24, 22884), (Start: 50 @23010 has 1 MA's), (Start: 63 @23070 has 212 MA's), (75, 23139), (89, 23253), (103, 23325), (109, 23361), (116, 23400),

Gene: SiSi_21 Start: 22990, Stop: 23331, Start Num: 63

Candidate Starts for SiSi_21:

(Start: 50 @22936 has 1 MA's), (Start: 63 @22990 has 212 MA's), (75, 23059), (89, 23173), (96, 23203), (107, 23275), (109, 23281), (114, 23308), (117, 23323),

Gene: SimranZ1_22 Start: 22801, Stop: 23142, Start Num: 63

Candidate Starts for SimranZ1_22:

(Start: 50 @22747 has 1 MA's), (Start: 63 @22801 has 212 MA's), (91, 22996), (96, 23014), (107, 23086), (109, 23092), (114, 23119), (117, 23134),

Gene: SirPhilip_28 Start: 23328, Stop: 23702, Start Num: 60

Candidate Starts for SirPhilip_28:

(Start: 60 @23328 has 239 MA's), (73, 23391), (75, 23400), (79, 23472), (98, 23571), (101, 23586),

Gene: Skog_190 Start: 114258, Stop: 114617, Start Num: 60

Candidate Starts for Skog_190:

(Start: 60 @114258 has 239 MA's), (90, 114462), (97, 114489), (98, 114492), (105, 114543),

Gene: Skysand_49 Start: 37758, Stop: 38102, Start Num: 60

Candidate Starts for Skysand_49:

(Start: 60 @37758 has 239 MA's), (68, 37800), (88, 37932), (90, 37944), (101, 37989), (105, 38025),

Gene: Slarp_30 Start: 25622, Stop: 25999, Start Num: 60

Candidate Starts for Slarp_30:

(Start: 60 @25622 has 239 MA's), (75, 25694), (82, 25787), (90, 25835), (94, 25847), (101, 25880), (103, 25904), (107, 25931), (111, 25952), (114, 25961),

Gene: Slimphazie_29 Start: 24420, Stop: 24791, Start Num: 60

Candidate Starts for Slimphazie_29:

(Start: 60 @24420 has 239 MA's), (82, 24582), (92, 24636), (96, 24654), (114, 24756),

Gene: Sparkdehlily_21 Start: 23023, Stop: 23364, Start Num: 63

Candidate Starts for Sparkdehlily_21:

(Start: 63 @23023 has 212 MA's), (75, 23092), (91, 23218), (96, 23236), (107, 23308), (109, 23314),

Gene: Spartacus_22 Start: 23082, Stop: 23423, Start Num: 63

Candidate Starts for Spartacus_22:

(8, 22758), (Start: 50 @23028 has 1 MA's), (Start: 63 @23082 has 212 MA's), (75, 23151), (91, 23277), (96, 23295), (107, 23367), (109, 23373), (114, 23400), (117, 23415),

Gene: Spikelee_22 Start: 22824, Stop: 23165, Start Num: 63

Candidate Starts for Spikelee_22:

(8, 22500), (Start: 50 @22770 has 1 MA's), (Start: 63 @22824 has 212 MA's), (75, 22893), (91, 23019), (96, 23037), (107, 23109), (109, 23115),

Gene: Spock_29 Start: 24453, Stop: 24824, Start Num: 60

Candidate Starts for Spock_29:

(Start: 60 @24453 has 239 MA's), (82, 24615), (92, 24669), (96, 24687), (114, 24789),

Gene: Spoonbill_21 Start: 23068, Stop: 23409, Start Num: 63

Candidate Starts for Spoonbill_21:

(24, 22882), (Start: 50 @23008 has 1 MA's), (Start: 63 @23068 has 212 MA's), (75, 23137), (89, 23251), (103, 23323), (109, 23359), (116, 23398),

Gene: StAnnes_21 Start: 23042, Stop: 23383, Start Num: 63

Candidate Starts for StAnnes_21:

(Start: 50 @22988 has 1 MA's), (Start: 63 @23042 has 212 MA's), (75, 23111), (91, 23237), (96, 23255), (107, 23327), (109, 23333), (114, 23360),

Gene: Stap_22 Start: 23031, Stop: 23372, Start Num: 63

Candidate Starts for Stap_22:

(8, 22707), (Start: 50 @22977 has 1 MA's), (Start: 63 @23031 has 212 MA's), (75, 23100), (91, 23226), (96, 23244), (107, 23316), (109, 23322),

Gene: StarStruck_48 Start: 37285, Stop: 37629, Start Num: 60

Candidate Starts for StarStruck_48:

(25, 37111), (Start: 60 @37285 has 239 MA's), (68, 37327), (72, 37342), (87, 37456), (88, 37459), (90, 37471), (101, 37516), (105, 37552),

Gene: Starcevich_22 Start: 22792, Stop: 23133, Start Num: 63

Candidate Starts for Starcevich_22:

(8, 22468), (Start: 50 @22738 has 1 MA's), (Start: 63 @22792 has 212 MA's), (75, 22861), (91, 22987), (96, 23005), (107, 23077), (109, 23083), (114, 23110),

Gene: Sticker17_32 Start: 39247, Stop: 39612, Start Num: 60

Candidate Starts for Sticker17_32:

(Start: 60 @39247 has 239 MA's), (66, 39277), (71, 39298), (88, 39439), (90, 39451), (92, 39457), (102, 39514), (103, 39520), (114, 39586), (118, 39604),

Gene: Stinson_30 Start: 24660, Stop: 25031, Start Num: 60

Candidate Starts for Stinson_30:

(Start: 60 @24660 has 239 MA's), (73, 24720), (82, 24822), (92, 24876), (94, 24882), (101, 24915), (114, 24996),

Gene: Strobilo_27 Start: 22685, Stop: 23053, Start Num: 61

Candidate Starts for Strobilo_27:

(57, 22649), (Start: 61 @22685 has 12 MA's), (79, 22826), (82, 22847), (94, 22907), (96, 22919), (101, 22940),

Gene: Strokeseat_21 Start: 23096, Stop: 23437, Start Num: 63

Candidate Starts for Strokeseat_21:

(8, 22772), (Start: 50 @23042 has 1 MA's), (Start: 63 @23096 has 212 MA's), (75, 23165), (91, 23291), (96, 23309), (107, 23381), (109, 23387), (114, 23414),

Gene: Suerte_27 Start: 23655, Stop: 23999, Start Num: 62

Candidate Starts for Suerte_27:

(6, 23298), (33, 23535), (46, 23586), (Start: 62 @23655 has 22 MA's), (64, 23676), (66, 23688), (77, 23766), (84, 23832), (89, 23847), (99, 23889),

Gene: Sukkupi_47 Start: 35717, Stop: 36061, Start Num: 60

Candidate Starts for Sukkupi_47:

(3, 35240), (4, 35279), (5, 35330), (16, 35459), (29, 35570), (40, 35612), (45, 35630), (52, 35675), (Start: 60 @35717 has 239 MA's), (87, 35888), (98, 35933),

Gene: Sulley_29 Start: 24386, Stop: 24757, Start Num: 60

Candidate Starts for Sulley_29:

(Start: 60 @24386 has 239 MA's), (82, 24548), (92, 24602), (96, 24620), (114, 24722),

Gene: Sunflower1121_28 Start: 23710, Stop: 24066, Start Num: 60

Candidate Starts for Sunflower1121_28:

(Start: 60 @23710 has 239 MA's), (73, 23770), (81, 23869), (92, 23911), (114, 24031),

Gene: SuperGrey_22 Start: 23675, Stop: 24016, Start Num: 63

Candidate Starts for SuperGrey_22:

(8, 23351), (Start: 50 @23621 has 1 MA's), (Start: 63 @23675 has 212 MA's), (75, 23744), (91, 23870), (96, 23888), (107, 23960), (109, 23966), (114, 23993),

Gene: SuperSulley_48 Start: 37453, Stop: 37797, Start Num: 60

Candidate Starts for SuperSulley_48:

(Start: 60 @37453 has 239 MA's), (68, 37495), (88, 37627), (90, 37639), (101, 37684), (105, 37720), (116, 37777),

Gene: SwagPiggett_21 Start: 23000, Stop: 23341, Start Num: 63

Candidate Starts for SwagPiggett_21:

(Start: 63 @23000 has 212 MA's), (75, 23069), (91, 23195), (96, 23213), (107, 23285), (109, 23291),

Gene: Syra333_29 Start: 23723, Stop: 24079, Start Num: 60

Candidate Starts for Syra333_29:

(56, 23690), (Start: 60 @23723 has 239 MA's), (72, 23780), (73, 23783), (80, 23879), (81, 23882), (92, 23924), (96, 23942), (114, 24044),

Gene: TBond007_29 Start: 24880, Stop: 25236, Start Num: 60

Candidate Starts for TBond007_29:

(Start: 60 @24880 has 239 MA's), (66, 24910), (73, 24940), (86, 25057), (92, 25081), (94, 25087), (96, 25099), (101, 25120), (114, 25201),

Gene: TClif_29 Start: 23824, Stop: 24186, Start Num: 60

Candidate Starts for TClif_29:

(Start: 60 @23824 has 239 MA's), (73, 23890), (92, 24031), (94, 24037), (96, 24049), (101, 24070),

Gene: TDanisky_21 Start: 23023, Stop: 23364, Start Num: 63

Candidate Starts for TDanisky_21:

(Start: 63 @23023 has 212 MA's), (75, 23092), (91, 23218), (96, 23236), (107, 23308), (109, 23314),

Gene: TM4_27 Start: 22832, Stop: 23212, Start Num: 61

Candidate Starts for TM4_27:

(Start: 61 @22832 has 12 MA's), (82, 23006), (94, 23066), (96, 23078), (101, 23099),

Gene: Tachez_29 Start: 24382, Stop: 24753, Start Num: 60

Candidate Starts for Tachez_29:

(Start: 60 @24382 has 239 MA's), (82, 24544), (92, 24598), (96, 24616), (114, 24718),

Gene: TaiwanKao_30 Start: 24391, Stop: 24762, Start Num: 60

Candidate Starts for TaiwanKao_30:

(Start: 60 @24391 has 239 MA's), (82, 24553), (92, 24607), (94, 24613), (96, 24625), (101, 24646), (114, 24727),

Gene: Taj_21 Start: 23031, Stop: 23372, Start Num: 63

Candidate Starts for Taj_21:

(8, 22707), (Start: 50 @22977 has 1 MA's), (Start: 63 @23031 has 212 MA's), (75, 23100), (91, 23226), (96, 23244), (107, 23316), (109, 23322), (114, 23349),

Gene: Teal_32 Start: 39715, Stop: 40080, Start Num: 60

Candidate Starts for Teal_32:

(Start: 60 @39715 has 239 MA's), (66, 39745), (71, 39766), (88, 39907), (90, 39919), (92, 39925), (102, 39982), (103, 39988), (114, 40054), (118, 40072),

Gene: Thimann_29 Start: 24123, Stop: 24467, Start Num: 62

Candidate Starts for Thimann_29:

(6, 23766), (33, 24003), (46, 24054), (Start: 62 @24123 has 22 MA's), (64, 24144), (66, 24156), (77, 24234), (84, 24300), (89, 24315), (99, 24357),

Gene: Tierra_29 Start: 24546, Stop: 24902, Start Num: 60

Candidate Starts for Tierra_29:

(Start: 54 @24507 has 1 MA's), (Start: 60 @24546 has 239 MA's), (73, 24606), (81, 24705), (92, 24747), (96, 24765), (114, 24867),

Gene: TingHuaYa_29 Start: 23583, Stop: 23939, Start Num: 60

Candidate Starts for TingHuaYa_29:

(Start: 60 @23583 has 239 MA's), (92, 23784), (114, 23904),

Gene: TiniBug_29 Start: 24376, Stop: 24747, Start Num: 60

Candidate Starts for TiniBug_29:

(Start: 60 @24376 has 239 MA's), (82, 24538), (92, 24592), (101, 24631),

Gene: Tiri_29 Start: 24425, Stop: 24796, Start Num: 60

Candidate Starts for Tiri_29:

(Start: 60 @24425 has 239 MA's), (82, 24587), (92, 24641), (96, 24659), (101, 24680), (114, 24761),

Gene: TootsiePop_22 Start: 22869, Stop: 23210, Start Num: 63

Candidate Starts for TootsiePop_22:

(Start: 63 @22869 has 212 MA's), (91, 23064), (96, 23082), (107, 23154), (109, 23160), (114, 23187),

Gene: Tootsieroll_22 Start: 22840, Stop: 23181, Start Num: 63

Candidate Starts for Tootsieroll_22:

(8, 22516), (Start: 50 @22786 has 1 MA's), (Start: 63 @22840 has 212 MA's), (75, 22909), (91, 23035), (96, 23053), (107, 23125), (109, 23131),

Gene: Topper_29 Start: 24453, Stop: 24824, Start Num: 60

Candidate Starts for Topper_29:

(Start: 60 @24453 has 239 MA's), (82, 24615), (92, 24669), (96, 24687), (114, 24789),

Gene: Toron_23 Start: 23377, Stop: 23730, Start Num: 58

Candidate Starts for Toron_23:

(58, 23377), (Start: 63 @23389 has 212 MA's), (71, 23440), (75, 23458), (89, 23572), (91, 23584), (96, 23602), (103, 23644), (109, 23680), (116, 23719),

Gene: Torres_25 Start: 23944, Stop: 24318, Start Num: 60

Candidate Starts for Torres_25:

(Start: 60 @23944 has 239 MA's), (67, 23980), (73, 24007), (88, 24145), (111, 24274), (114, 24283),

Gene: Totinger_22 Start: 22790, Stop: 23131, Start Num: 63

Candidate Starts for Totinger_22:

(8, 22466), (Start: 50 @22736 has 1 MA's), (Start: 63 @22790 has 212 MA's), (75, 22859), (89, 22973), (96, 23003), (107, 23075), (109, 23081), (114, 23108),

Gene: Tracker_46 Start: 36113, Stop: 36454, Start Num: 60

Candidate Starts for Tracker_46:

(Start: 60 @36113 has 239 MA's), (81, 36263), (88, 36287), (92, 36305), (93, 36308), (98, 36329), (101, 36344), (105, 36380), (110, 36413),

Gene: TreyKay_29 Start: 24385, Stop: 24756, Start Num: 60

Candidate Starts for TreyKay_29:

(Start: 60 @24385 has 239 MA's), (82, 24547), (92, 24601), (94, 24607), (96, 24619), (101, 24640), (114, 24721),

Gene: TribbleTrouble_28 Start: 24976, Stop: 25332, Start Num: 60

Candidate Starts for TribbleTrouble_28:

(Start: 60 @24976 has 239 MA's), (66, 25006), (73, 25036), (81, 25135), (86, 25153), (92, 25177), (94, 25183), (96, 25195), (114, 25297),

Gene: TruffulaTree_29 Start: 24416, Stop: 24787, Start Num: 60

Candidate Starts for TruffulaTree_29:

(Start: 60 @24416 has 239 MA's), (82, 24578), (92, 24632), (96, 24650), (101, 24671), (114, 24752),

Gene: Turuncu_51 Start: 37687, Stop: 38028, Start Num: 60

Candidate Starts for Turuncu_51:

(Start: 60 @37687 has 239 MA's), (81, 37837), (87, 37858), (90, 37873), (98, 37903),

Gene: Tweety_22 Start: 23051, Stop: 23392, Start Num: 63

Candidate Starts for Tweety_22:

(8, 22727), (Start: 50 @22997 has 1 MA's), (Start: 63 @23051 has 212 MA's), (75, 23120), (91, 23246), (96, 23264), (107, 23336), (109, 23342), (114, 23369),

Gene: Twitch_29 Start: 24453, Stop: 24824, Start Num: 60

Candidate Starts for Twitch_29:

(Start: 60 @24453 has 239 MA's), (82, 24615), (92, 24669), (96, 24687), (114, 24789),

Gene: Ubuntu_28 Start: 24633, Stop: 24989, Start Num: 60

Candidate Starts for Ubuntu_28:

(Start: 60 @24633 has 239 MA's), (71, 24684), (75, 24702), (77, 24741), (81, 24792), (82, 24795), (87, 24813), (90, 24828), (101, 24873), (105, 24909), (107, 24921), (114, 24957),

Gene: UncleRicky_24 Start: 24317, Stop: 24658, Start Num: 63

Candidate Starts for UncleRicky_24:

(8, 23993), (Start: 50 @24263 has 1 MA's), (Start: 63 @24317 has 212 MA's), (75, 24386), (91, 24512), (96, 24530), (107, 24602), (109, 24608), (114, 24635),

Gene: Unicorn_29 Start: 23875, Stop: 24231, Start Num: 60

Candidate Starts for Unicorn_29:

(Start: 60 @23875 has 239 MA's), (73, 23935), (81, 24034), (92, 24076), (96, 24094), (114, 24196),

Gene: Urkel_29 Start: 24379, Stop: 24750, Start Num: 60

Candidate Starts for Urkel_29:

(Start: 60 @24379 has 239 MA's), (82, 24541), (92, 24595), (101, 24634),

Gene: VRedHorse_21 Start: 23165, Stop: 23506, Start Num: 63

Candidate Starts for VRedHorse_21:

(8, 22841), (Start: 50 @23111 has 1 MA's), (Start: 63 @23165 has 212 MA's), (75, 23234), (91, 23360), (96, 23378), (107, 23450), (109, 23456), (114, 23483),

Gene: Validus_29 Start: 23713, Stop: 24087, Start Num: 60

Candidate Starts for Validus_29:

(Start: 60 @23713 has 239 MA's), (67, 23749), (73, 23776), (75, 23785), (94, 23938), (96, 23950), (101, 23971), (114, 24052),

Gene: Veliki_29 Start: 24456, Stop: 24827, Start Num: 60

Candidate Starts for Veliki_29:

(Start: 60 @24456 has 239 MA's), (82, 24618), (92, 24672), (96, 24690), (114, 24792),

Gene: Veteran_21 Start: 23003, Stop: 23344, Start Num: 63

Candidate Starts for Veteran_21:

(Start: 50 @22949 has 1 MA's), (Start: 63 @23003 has 212 MA's), (75, 23072), (89, 23186), (96, 23216), (107, 23288), (109, 23294), (114, 23321),

Gene: Vivum_21 Start: 22945, Stop: 23286, Start Num: 63

Candidate Starts for Vivum_21:

(8, 22621), (Start: 50 @22891 has 1 MA's), (Start: 63 @22945 has 212 MA's), (75, 23014), (89, 23128), (96, 23158), (107, 23230), (109, 23236), (114, 23263),

Gene: Wachhund_21 Start: 23023, Stop: 23364, Start Num: 63

Candidate Starts for Wachhund_21:

(8, 22699), (Start: 50 @22969 has 1 MA's), (Start: 63 @23023 has 212 MA's), (75, 23092), (91, 23218), (96, 23236), (107, 23308), (109, 23314), (114, 23341),

Gene: Wanda_42 Start: 35426, Stop: 35767, Start Num: 63

Candidate Starts for Wanda_42:

(8, 35102), (Start: 50 @35372 has 1 MA's), (Start: 63 @35426 has 212 MA's), (75, 35495), (91, 35621), (96, 35639), (107, 35711), (109, 35717), (114, 35744),

Gene: Webster2_28 Start: 24633, Stop: 24989, Start Num: 60

Candidate Starts for Webster2_28:

(Start: 60 @24633 has 239 MA's), (71, 24684), (75, 24702), (77, 24741), (81, 24792), (82, 24795), (87, 24813), (90, 24828), (101, 24873), (105, 24909), (107, 24921), (114, 24957),

Gene: Wee_22 Start: 23572, Stop: 23913, Start Num: 63

Candidate Starts for Wee_22:

(8, 23248), (Start: 50 @23518 has 1 MA's), (Start: 63 @23572 has 212 MA's), (75, 23641), (91, 23767), (96, 23785), (107, 23857), (109, 23863), (114, 23890),

Gene: Whatsapiecost_21 Start: 23048, Stop: 23389, Start Num: 63

Candidate Starts for Whatsapiecost_21:

(8, 22724), (Start: 50 @22994 has 1 MA's), (Start: 63 @23048 has 212 MA's), (75, 23117), (91, 23243), (96, 23261), (107, 23333), (109, 23339), (114, 23366),

Gene: Whitney_33 Start: 25341, Stop: 25685, Start Num: 62

Candidate Starts for Whitney_33:

(Start: 62 @25341 has 22 MA's), (64, 25362), (77, 25452), (84, 25518), (89, 25533), (95, 25560), (99, 25575), (104, 25614), (107, 25635), (113, 25659),

Gene: WhoseManz_47 Start: 33777, Stop: 34121, Start Num: 60

Candidate Starts for WhoseManz_47:

(Start: 60 @33777 has 239 MA's), (87, 33948), (98, 33993),

Gene: Whouxphf_21 Start: 23105, Stop: 23446, Start Num: 63

Candidate Starts for Whouxphf_21:

(8, 22781), (Start: 50 @23051 has 1 MA's), (Start: 63 @23105 has 212 MA's), (91, 23300), (96, 23318), (107, 23390), (109, 23396), (114, 23423),

Gene: WillSterrel_22 Start: 24391, Stop: 24732, Start Num: 63

Candidate Starts for WillSterrel_22:

(8, 24067), (Start: 50 @24337 has 1 MA's), (Start: 63 @24391 has 212 MA's), (75, 24460), (91, 24586), (96, 24604), (107, 24676), (109, 24682), (114, 24709),

Gene: Wintermute_30 Start: 25611, Stop: 25988, Start Num: 60

Candidate Starts for Wintermute_30:

(Start: 60 @25611 has 239 MA's), (82, 25776), (90, 25824), (94, 25836), (101, 25869), (107, 25920), (111, 25941), (114, 25950),

Gene: Wishmaker_28 Start: 24633, Stop: 24989, Start Num: 60

Candidate Starts for Wishmaker_28:

(Start: 60 @24633 has 239 MA's), (71, 24684), (75, 24702), (77, 24741), (81, 24792), (82, 24795), (87, 24813), (90, 24828), (101, 24873), (105, 24909), (107, 24921), (114, 24957),

Gene: Woes_32 Start: 39766, Stop: 40131, Start Num: 60

Candidate Starts for Woes_32:

(Start: 60 @39766 has 239 MA's), (66, 39796), (71, 39817), (88, 39958), (90, 39970), (92, 39976), (102, 40033), (103, 40039), (114, 40105), (118, 40123),

Gene: XFactor_21 Start: 23004, Stop: 23345, Start Num: 63

Candidate Starts for XFactor_21:

(8, 22680), (Start: 50 @22950 has 1 MA's), (Start: 63 @23004 has 212 MA's), (75, 23073), (91, 23199), (96, 23217), (107, 23289), (109, 23295), (114, 23322),

Gene: Ximenita_30 Start: 23902, Stop: 24258, Start Num: 60

Candidate Starts for Ximenita_30:

(Start: 60 @23902 has 239 MA's), (72, 23959), (73, 23962), (80, 24058), (81, 24061), (92, 24103), (96, 24121), (114, 24223),

Gene: Y10_30 Start: 25611, Stop: 25988, Start Num: 60

Candidate Starts for Y10_30:

(Start: 60 @25611 has 239 MA's), (82, 25776), (90, 25824), (94, 25836), (101, 25869), (107, 25920), (111, 25941), (114, 25950),

Gene: Y2_30 Start: 25611, Stop: 25988, Start Num: 60

Candidate Starts for Y2_30:

(Start: 60 @25611 has 239 MA's), (82, 25776), (90, 25824), (94, 25836), (101, 25869), (107, 25920), (111, 25941), (114, 25950),

Gene: Yndexa_47 Start: 35717, Stop: 36061, Start Num: 60

Candidate Starts for Yndexa_47:

(3, 35240), (4, 35279), (5, 35330), (16, 35459), (29, 35570), (40, 35612), (45, 35630), (52, 35675), (Start: 60 @35717 has 239 MA's), (87, 35888), (98, 35933),

Gene: Yorick_21 Start: 23068, Stop: 23409, Start Num: 63

Candidate Starts for Yorick_21:

(24, 22882), (Start: 50 @23008 has 1 MA's), (Start: 63 @23068 has 212 MA's), (75, 23137), (89, 23251), (103, 23323), (109, 23359), (116, 23398),

Gene: YoureAdopted_28 Start: 24389, Stop: 24760, Start Num: 60

Candidate Starts for YoureAdopted_28:

(Start: 60 @24389 has 239 MA's), (79, 24530), (82, 24551), (92, 24605), (96, 24623), (101, 24644), (114, 24725),

Gene: Yuna_30 Start: 24273, Stop: 24644, Start Num: 60

Candidate Starts for Yuna_30:

(Start: 60 @24273 has 239 MA's), (66, 24303), (82, 24435), (92, 24489), (94, 24495), (96, 24507), (107, 24579), (112, 24603), (114, 24609),

Gene: Yunkel11_29 Start: 23685, Stop: 24056, Start Num: 60

Candidate Starts for Yunkel11_29:

(Start: 60 @23685 has 239 MA's), (79, 23826), (82, 23847), (92, 23901), (96, 23919), (101, 23940), (114, 24021),

Gene: Zabiza_29 Start: 24420, Stop: 24791, Start Num: 60

Candidate Starts for Zabiza_29:

(Start: 60 @24420 has 239 MA's), (82, 24582), (92, 24636), (96, 24654), (114, 24756),

Gene: Zavala_29 Start: 24395, Stop: 24766, Start Num: 60

Candidate Starts for Zavala_29:

(Start: 60 @24395 has 239 MA's), (82, 24557), (92, 24611), (96, 24629), (101, 24650), (114, 24731),

Gene: Zerg_21 Start: 22964, Stop: 23305, Start Num: 63

Candidate Starts for Zerg_21:

(Start: 63 @22964 has 212 MA's), (75, 23033), (91, 23159), (96, 23177), (107, 23249), (109, 23255), (114, 23282),

Gene: Zizzle_21 Start: 23012, Stop: 23353, Start Num: 63

Candidate Starts for Zizzle_21:

(24, 22826), (Start: 50 @22952 has 1 MA's), (Start: 63 @23012 has 212 MA's), (75, 23081), (89, 23195), (103, 23267), (109, 23303), (116, 23342),

Gene: ZoeJ_27 Start: 22641, Stop: 23009, Start Num: 61

Candidate Starts for ZoeJ_27:

(Start: 61 @22641 has 12 MA's), (73, 22701), (82, 22803), (94, 22863), (96, 22875), (101, 22896),