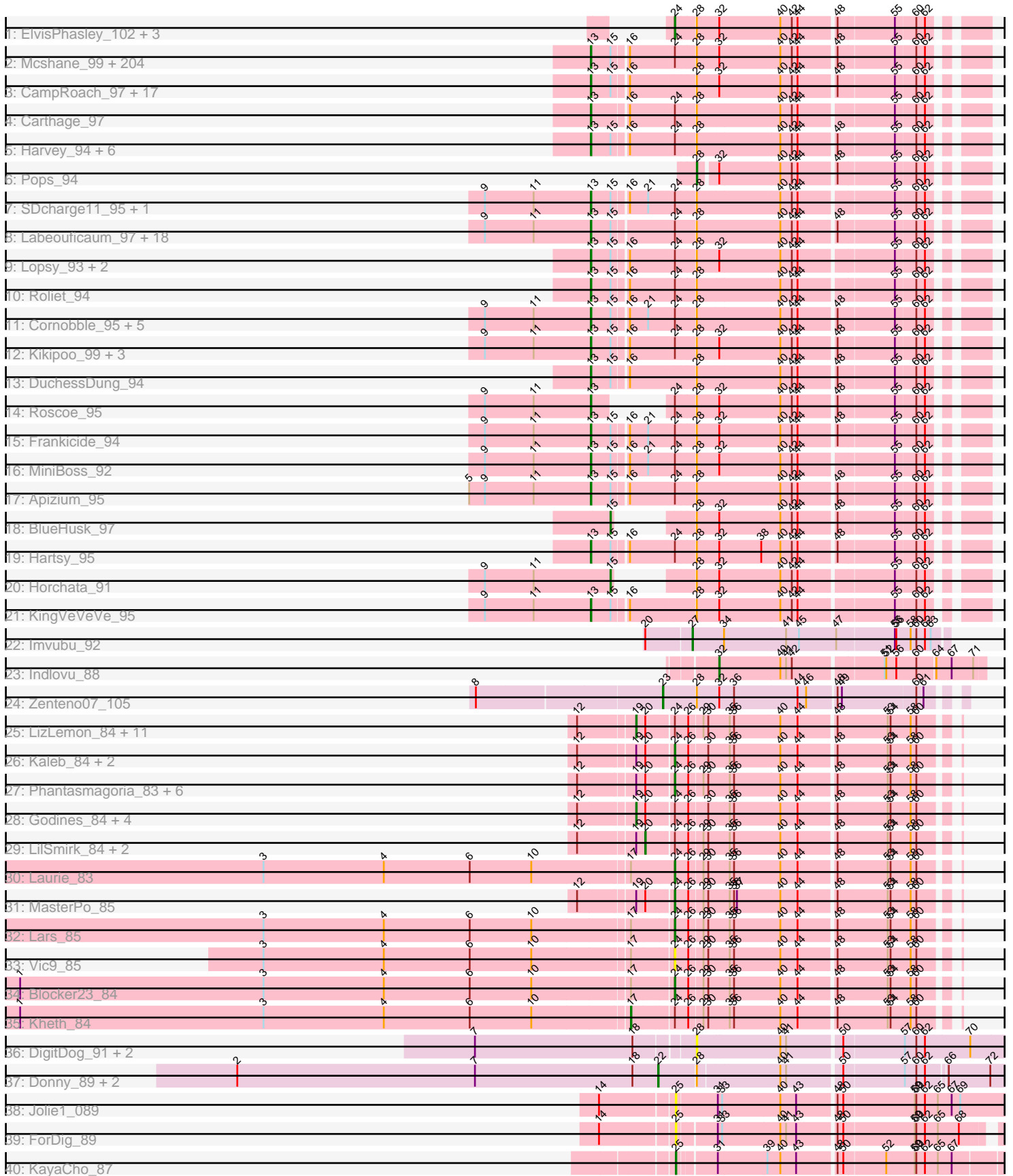


# Pham 199905



Note: Tracks are now grouped by subcluster and scaled. Switching in subcluster is indicated by changes in track color. Track scale is now set by default to display the region 30 bp upstream of start 1 to 30 bp downstream of the last possible start. If this default region is judged to be packed too tightly with annotated starts, the track will be further scaled to only show that region of the ORF with annotated starts. This action will be indicated by adding "Zoomed" to the title. For starts, yellow indicates the location of called starts comprised solely of Glimmer/GeneMark auto-annotations, green indicates the location of called starts with at least 1 manual gene annotation.

## Pham 199905 Report

This analysis was run 01/18/25 on database version 583.

Pham number 199905 has 328 members, 31 are drafts.

Phages represented in each track:

- Track 1 : ElvisPhasley\_102, Chunky\_95, HSavage\_94, Boehler\_94
- Track 2 : Mcshane\_99, Placalicious\_94, Craff\_98, UAch1\_97, Cher\_97, Puhltonio\_92, SilverBell\_98, Struggle\_97, Maru\_96, True\_98, Dati\_94, Riggan\_98, Thunderbird\_97, Phunky\_94, BlackStallion\_96, Keitherie\_100, Phipps\_94, Eugenia\_99, Mesh1\_97, Weher20\_94, Olak\_99, Mecca\_97, Oline\_96, Phergie\_97, Selr12\_101, AbsoluteMadLad\_95, Ricotta\_98, JacAttac\_97, Lego3393\_95, Inverness\_94, Anderson\_98, Simielle\_97, Andre\_101, Orfeu\_97, Gwennie1\_94, Lumine\_98, QueenBeane\_97, Bishoperium\_97, Longacauda\_97, ProfessorX\_94, Oosterbaan\_97, Kimbrough\_98, TallGrassMM\_96, Inchworm\_98, Yoshand\_98, Chah\_99, Newman\_92, Podrick\_95, Badfish\_97, Cannibal\_97, Beaglebox\_93, Slatt\_99, Etaye\_96, Kwadwo\_96, FugateOSU\_97, Hertubise\_96, Toni\_96, Manad\_96, OliverWalter\_96, GeneCoco\_96, Doddsville\_94, TomBombadil\_97, Gareth\_97, LeeLot\_95, Haimas\_94, FluffyNinja\_98, Phareon\_94, Waterdiva\_98, DirtJuice\_98, Daffy\_96, HenryJackson\_97, Nicole21\_98, DonSanchon\_92, Childish\_97, KLucky39\_94, UncleHowie\_93, Sheila\_91, Burr\_99, Swiphy\_101, Cosmolli16\_98, Colbert\_95, Mesmerelda\_98, Legolas\_98, Matalotodo\_95, Haleema\_96, KingTut\_87, Omniscient\_98, Charles1\_100, Tomlarah\_97, Olive\_93, JDog\_96, LemonSlice\_97, Nyala\_97, EmpTee\_96, Jillium\_97, Melc17\_94, Mana\_94, Fringe\_101, Piglet\_0096, Spartan300\_96, Altwerkus\_94, Hocus\_96, Samaymay\_97, Squid\_96, LuckyMarjie\_94, Buckeye\_95, Timmi\_95, CamL\_97, Crownjwl\_94, MRabcd\_97, Adriana\_97, Scoot17C\_97, Freya\_93, Thora\_95, Plmatters\_94, Jiminy\_97, Virapocalypse\_98, Chute\_97, HighStump\_99, Held\_95, Pherdinand\_98, Banjo\_93, Zaider\_98, Mulan\_96, Coletti\_99, Potter\_91, Hamish\_94, Numberten\_97, Grand2040\_94, Bluephacebaby\_96, Usavi\_97, FriarPreacher\_94, Morgushi\_94, DaddyDaniels\_100, DelRivs\_96, Suffolk\_92, Squiggle\_96, Dice\_97, Soile\_98, ABU\_95, Orion\_95, Zelda\_97, Jesabah\_97, LostAndPhound\_96, CheetO\_93, KlimbOn\_96, Serpentine\_0099, JakeO\_98, Prickles\_97, LasagnaCat\_98, Cobra\_97, Sigman\_96, Xavier\_96, Scrick\_98, Nathan\_96, Sophia\_95, Vaticameos\_94, Skippy\_97, DoesntMatter\_94, Trypo\_97, Lulwa\_94, PhenghisKhan\_97, Nacho\_0099, Emiris\_99, Katniss\_99, Telesworld\_95, LeiMonet\_99, PhatLouie\_99, PhatCats2014\_96, Brilliant\_100, Mosaic\_94, Quisquiliae\_99, Megatron\_98, Lasso\_96, SassyCat97\_95, Vortex\_95, PG1\_95, PhrodoBaggins\_99, Iridessa\_99, PhrankReynolds\_95, ShiVal\_96, Fang\_97, Mutante\_98, Pacifista\_99, Kahve\_97, Iridoclysis\_96, Giraffe\_98, MitKao\_97, Swish\_98, Duggie\_97, Serendipity\_96, ThreeOh3D2\_98, PinheadLarry\_96, Solosis\_95, Hetaeria\_96, Jiraiya\_102, Phamished\_96, Morty\_97, Gophee\_96, Orwigg\_99, Vista\_96, YouGoGlencoco\_97, Murdoc\_93, JangoPhett\_95, Dione\_95

- Track 3 : CampRoach\_97, Durga\_99, Wallhey\_98, Caspiboi\_98, Khan1\_97, Chorkpop\_98, Surely\_97, Lulumae\_92, Kwksand96\_98, Pinkman\_96, Fozzie\_93, MrPhizzler\_96, Rimu\_100, Roy17\_94, Valjean\_95, Megamind20\_99, Virgeve\_95, Zonia\_97
- Track 4 : Carthage\_97
- Track 5 : Harvey\_94, Dingo\_93, Soto\_93, Pipsqueak\_94, Mikota\_91, Basato\_95, Kloppinator\_97
- Track 6 : Pops\_94
- Track 7 : SDcharge11\_95, Daka\_98
- Track 8 : Labeouficaum\_97, Phleuron\_94, Derpp\_96, Maskar\_98, AngelCake\_93, CharlieGBrown\_95, ImtiyazSitla\_98, MelsMeow\_95, Mag7\_95, BatteryCK\_95, Ashraf\_98, MichaelPhcott\_95, Chaelin\_97, Windsor\_96, Schueller\_96, Veritas\_96, Magic8\_96, Kailash\_95, TyrionL\_97
- Track 9 : Lopsy\_93, Tooj\_94, Eremos\_94
- Track 10 : Roliet\_94
- Track 11 : Cornobble\_95, Aelin\_96, Antonia\_96, OSmaximus\_97, RedMaple\_95, Schadenfreude\_97
- Track 12 : Kikipoo\_99, Gwilliam\_97, AltPhacts\_94, IsaacEli\_99
- Track 13 : DuchessDung\_94
- Track 14 : Roscoe\_95
- Track 15 : Frankicide\_94
- Track 16 : MiniBoss\_92
- Track 17 : Apizium\_95
- Track 18 : BlueHusk\_97
- Track 19 : Hartsy\_95
- Track 20 : Horchata\_91
- Track 21 : KingVeVeVe\_95
- Track 22 : Imvubu\_92
- Track 23 : Indlovu\_88
- Track 24 : Zenteno07\_105
- Track 25 : LizLemon\_84, Rhinoforte\_84, Arbiter\_81, Qyrzula\_75, Ares\_84, Bananafish\_85, Tinciduntolum\_85, Hedgerow\_84, Brownie5\_84, Opia\_85, FrenchFry\_85, Sabella\_84
- Track 26 : Kaleb\_84, TA17A\_85, Lephleur\_84
- Track 27 : Phantasmagoria\_83, Allegro\_84, Kolhan\_85, Coffee\_83, Calamitous\_85, Faze9\_83, Boyle\_84
- Track 28 : Godines\_84, ItsyBitsy1\_81, Holeinone\_84, Glass\_86, Rosebush\_82
- Track 29 : LilSmirk\_84, West99\_84, Tres\_84
- Track 30 : Laurie\_83
- Track 31 : MasterPo\_85
- Track 32 : Lars\_85
- Track 33 : Vic9\_85
- Track 34 : Blocker23\_84
- Track 35 : Kheth\_84
- Track 36 : DigitDog\_91, Shenyu\_90, Nangang\_90
- Track 37 : Donny\_89, Acadian\_89, Suigeneris\_90
- Track 38 : Jolie1\_089
- Track 39 : ForDig\_89
- Track 40 : KayaCho\_87

***Summary of Final Annotations (See graph section above for start numbers):***

The start number called the most often in the published annotations is 13, it was called in 253 of the 297 non-draft genes in the pham.

Genes that call this "Most Annotated" start:

- ABU\_95, AbsoluteMadLad\_95, Adriana\_97, Aelin\_96, AltPhacts\_94, Altwerkus\_94, Anderson\_98, Andre\_101, AngelCake\_93, Antonia\_96, Apizium\_95, Ashraf\_98, Badfish\_97, Banjo\_93, Basato\_95, BatteryCK\_95, Beaglebox\_93, Bishoperium\_97, BlackStallion\_96, Bluephacebaby\_96, Brilliant\_100, Buckeye\_95, Burr\_99, CamL\_97, CampRoach\_97, Cannibal\_97, Carthage\_97, Caspiroi\_98, Chaelin\_97, Chah\_99, Charles1\_100, CharlieGBrown\_95, CheetO\_93, Cher\_97, Childish\_97, Chorkpop\_98, Chute\_97, Cobra\_97, Colbert\_95, Coletti\_99, Cornobble\_95, Cosmolli16\_98, Craff\_98, Crownjwl\_94, DaddyDaniels\_100, Daffy\_96, Daka\_98, Dati\_94, DelRivs\_96, Derpp\_96, Dice\_97, Dingo\_93, Dione\_95, DirtJuice\_98, Doddsville\_94, DoesntMatter\_94, DonSancho\_92, DuchessDung\_94, Duggie\_97, Durga\_99, Emiris\_99, EmpTee\_96, Eremos\_94, Etaye\_96, Eugenia\_99, Fang\_97, FluffyNinja\_98, Fozzie\_93, Frankicide\_94, Freya\_93, FriarPreacher\_94, Fringe\_101, FugateOSU\_97, Gareth\_97, GeneCoco\_96, Giraffe\_98, Gophee\_96, Grand2040\_94, Gwennie1\_94, Gwilliam\_97, Haimas\_94, Haleema\_96, Hamish\_94, Hartsy\_95, Harvey\_94, Held\_95, HenryJackson\_97, Hertubise\_96, Hetaeria\_96, HighStump\_99, Hocus\_96, ImtiyazSitla\_98, Inchworm\_98, Inverness\_94, Iridessa\_99, Iridoclysis\_96, IsaacEli\_99, JDog\_96, JacAttac\_97, JakeO\_98, JangoPhett\_95, Jesabah\_97, Jillium\_97, Jiminy\_97, Jiraiya\_102, KLucky39\_94, Kahve\_97, Kailash\_95, Katniss\_99, Keitherie\_100, Khan1\_97, Kikipoo\_99, Kimbrough\_98, KingTut\_87, KingVeVeVe\_95, KlimbOn\_96, Kloppinator\_97, Kwadwo\_96, Kwksand96\_98, Labeouficaum\_97, LasagnaCat\_98, Lasso\_96, LeeLot\_95, Lego3393\_95, Legolas\_98, LeiMonet\_99, LemonSlice\_97, Longacauda\_97, Lopsy\_93, LostAndPhound\_96, LuckyMarjie\_94, Lulumae\_92, Lulwa\_94, Lumine\_98, MRabcd\_97, Mag7\_95, Magic8\_96, Mana\_94, Manad\_96, Maru\_96, Maskar\_98, Matalotodo\_95, Mcshane\_99, Mecca\_97, Megamind20\_99, Megatron\_98, Melc17\_94, MelsMeow\_95, Mesh1\_97, Mesmerelda\_98, MichaelPhcott\_95, Mikota\_91, MiniBoss\_92, MitKao\_97, Morgushi\_94, Morty\_97, Mosaic\_94, MrPhizzler\_96, Mulan\_96, Murdoc\_93, Mutante\_98, Nacho\_0099, Nathan\_96, Newman\_92, Nicole21\_98, Numberten\_97, Nyala\_97, OSmaximus\_97, Olak\_99, Oline\_96, Olive\_93, OliverWalter\_96, Omniscient\_98, Oosterbaan\_97, Orfeu\_97, Orion\_95, Orwigg\_99, PG1\_95, Pacifista\_99, Phamished\_96, Phareon\_94, PhatCats2014\_96, PhatLouie\_99, PhenghisKhan\_97, Pherdinand\_98, Phergie\_97, Phipps\_94, Phleuron\_94, PhrankReynolds\_95, PhrodoBaggins\_99, Phunky\_94, Piglet\_0096, PinheadLarry\_96, Pinkman\_96, Pipsqueak\_94, Placalicious\_94, Plmatters\_94, Podrick\_95, Potter\_91, Prickles\_97, ProfessorX\_94, Puhltonio\_92, QueenBeane\_97, Quisquilliae\_99, RedMaple\_95, Ricotta\_98, Riggan\_98, Rimu\_100, Roliet\_94, Roscoe\_95, Roy17\_94, SDcharge11\_95, Samaymay\_97, SassyCat97\_95, Schadenfreude\_97, Schueller\_96, Scoot17C\_97, Scrick\_98, Selr12\_101, Serendipity\_96, Serpentine\_0099, Sheila\_91, ShiVal\_96, Sigman\_96, SilverBell\_98, Simielle\_97, Skippy\_97, Slatt\_99, Soile\_98, Solosis\_95, Sophia\_95, Soto\_93, Spartan300\_96, Squid\_96, Squiggle\_96, Struggle\_97, Suffolk\_92, Surely\_97, Swiphy\_101, Swish\_98, TallGrassMM\_96, Telesworld\_95, Thora\_95, ThreeOh3D2\_98, Thunderbird\_97, Timmi\_95, TomBombadil\_97, Tomlarah\_97, Toni\_96, Tooj\_94, True\_98, Trypo\_97, TyrionL\_97, UAch1\_97, UncleHowie\_93, Usavi\_97, Valjean\_95, Vaticameos\_94, Veritas\_96, Virapocalypse\_98, Virgeve\_95, Vista\_96, Vortex\_95, Wallhey\_98, Waterdiva\_98, Weher20\_94, Windsor\_96, Xavier\_96, Yoshand\_98, YouGoGlencoco\_97, Zaider\_98, Zelda\_97, Zonia\_97,

Genes that have the "Most Annotated" start but do not call it:

- 

Genes that do not have the "Most Annotated" start:

- Acadian\_89, Allegro\_84, Arbiter\_81, Ares\_84, Bananafish\_85, Blocker23\_84, BlueHusk\_97, Boehler\_94, Boyle\_84, Brownie5\_84, Calamitous\_85, Chunky\_95, Coffee\_83, DigitDog\_91, Donny\_89, ElvisPhasley\_102, Faze9\_83, ForDig\_89, FrenchFry\_85, Glass\_86, Godines\_84, HSavage\_94, Hedgerow\_84, Holeinone\_84, Horchata\_91, Imvubu\_92, Indlovu\_88, ItsyBitsy1\_81, Jolie1\_089, Kaleb\_84, KayaCho\_87, Kheth\_84, Kolhan\_85, Lars\_85, Laurie\_83, Lephleur\_84, LilSmirk\_84, LizLemon\_84, MasterPo\_85, Nangang\_90, Opia\_85, Phantasmagoria\_83, Pops\_94, Qyrzula\_75, Rhinoforte\_84, Rosebush\_82, Sabella\_84, Shenyu\_90, Suigeneris\_90, TA17A\_85, Tinciduntolum\_85, Tres\_84, Vic9\_85, West99\_84, Zenteno07\_105,

### Summary by start number:

Start 13:

- Found in 273 of 328 ( 83.2% ) of genes in pham
- Manual Annotations of this start: 253 of 297
- Called 100.0% of time when present
- Phage (with cluster) where this start called: ABU\_95 (B1), AbsoluteMadLad\_95 (B1), Adriana\_97 (B1), Aelin\_96 (B1), AltPhacts\_94 (B1), Altwerkus\_94 (B1), Anderson\_98 (B1), Andre\_101 (B1), AngelCake\_93 (B1), Antonia\_96 (B1), Apizium\_95 (B1), Ashraf\_98 (B1), Badfish\_97 (B1), Banjo\_93 (B1), Basato\_95 (B1), BatteryCK\_95 (B1), Beaglebox\_93 (B1), Bishoperium\_97 (B1), BlackStallion\_96 (B1), Bluephacebaby\_96 (B1), Brilliant\_100 (B1), Buckeye\_95 (B1), Burr\_99 (B1), CamL\_97 (B1), CampRoach\_97 (B1), Cannibal\_97 (B1), Carthage\_97 (B1), Caspiboi\_98 (B1), Chaelin\_97 (B1), Chah\_99 (B1), Charles1\_100 (B1), CharlieGBrown\_95 (B1), CheetO\_93 (B1), Cher\_97 (B1), Childish\_97 (B1), Chorkpop\_98 (B1), Chute\_97 (B1), Cobra\_97 (B1), Colbert\_95 (B1), Coletti\_99 (B1), Cornobble\_95 (B1), Cosmolli16\_98 (B1), Craff\_98 (B1), Crownjwl\_94 (B1), DaddyDaniels\_100 (B1), Daffy\_96 (B1), Daka\_98 (B1), Dati\_94 (B1), DelRivs\_96 (B1), Derpp\_96 (B1), Dice\_97 (B1), Dingo\_93 (B1), Dione\_95 (B1), DirtJuice\_98 (B1), Doddsville\_94 (B1), DoesntMatter\_94 (B1), DonSanchon\_92 (B1), DuchessDung\_94 (B1), Duggie\_97 (B1), Durga\_99 (B1), Emiris\_99 (B1), EmpTee\_96 (B1), Eremos\_94 (B1), Etaye\_96 (B1), Eugenia\_99 (B1), Fang\_97 (B1), FluffyNinja\_98 (B1), Fozzie\_93 (B1), Frankicide\_94 (B1), Freya\_93 (B1), FriarPreacher\_94 (B1), Fringe\_101 (B1), FugateOSU\_97 (B1), Gareth\_97 (B1), GeneCoco\_96 (B1), Giraffe\_98 (B1), Gophee\_96 (B1), Grand2040\_94 (B1), Gwennie1\_94 (B1), Gwilliam\_97 (B1), Haimas\_94 (B1), Haleema\_96 (B1), Hamish\_94 (B1), Hartsy\_95 (B1), Harvey\_94 (B1), Held\_95 (B1), HenryJackson\_97 (B1), Hertubise\_96 (B1), Hetaeria\_96 (B1), HighStump\_99 (B1), Hocus\_96 (B1), ImtiyazSitla\_98 (B1), Inchworm\_98 (B1), Inverness\_94 (B1), Iridessa\_99 (B1), Iridoclysis\_96 (B1), IsaacEli\_99 (B1), JDog\_96 (B1), JacAttac\_97 (B1), JakeO\_98 (B1), JangoPhett\_95 (B1), Jesabah\_97 (B1), Jillium\_97 (B1), Jiminy\_97 (B1), Jiraiya\_102 (B1), KLucky39\_94 (B1), Kahve\_97 (B1), Kailash\_95 (B1), Katniss\_99 (B1), Keitherie\_100 (B1), Khan1\_97 (B1), Kikipoo\_99 (B1), Kimbrough\_98 (B1), KingTut\_87 (B1), KingVeVeVe\_95 (B1), KlimbOn\_96 (B1), Kloppinator\_97 (B1), Kwadwo\_96 (B1), Kwksand96\_98 (B1), Labeouficaum\_97 (B1), LasagnaCat\_98 (B1), Lasso\_96 (B1), LeeLot\_95 (B1), Lego3393\_95 (B1), Legolas\_98 (B1), LeiMonet\_99 (B1), LemonSlice\_97 (B1), Longacauda\_97 (B1), Lopsy\_93 (B1), LostAndPhound\_96 (B1), LuckyMarjie\_94 (B1), Lulumae\_92 (B1), Lulwa\_94 (B1), Lumine\_98 (B1), MRabcd\_97 (B1), Mag7\_95 (B1), Magic8\_96 (B1), Mana\_94 (B1), Manad\_96 (B1), Maru\_96 (B1), Maskar\_98 (B1), Matalotodo\_95 (B1),

Mcshane\_99 (B1), Mecca\_97 (B1), Megamind20\_99 (B1), Megatron\_98 (B1), Melc17\_94 (B1), MelsMeow\_95 (B1), Mesh1\_97 (B1), Mesmerelda\_98 (B1), MichaelPhcott\_95 (B1), Mikota\_91 (B1), MiniBoss\_92 (B1), MitKao\_97 (B1), Morgushi\_94 (B1), Morty\_97 (B1), Mosaic\_94 (B1), MrPhizzler\_96 (B1), Mulan\_96 (B1), Murdoc\_93 (B1), Mutante\_98 (B1), Nacho\_0099 (B1), Nathan\_96 (B1), Newman\_92 (B1), Nicole21\_98 (B1), Numberten\_97 (B1), Nyala\_97 (B1), OSmaximus\_97 (B1), Olak\_99 (B1), Oline\_96 (B1), Olive\_93 (B1), OliverWalter\_96 (B1), Omniscient\_98 (B1), Oosterbaan\_97 (B1), Orfeu\_97 (B1), Orion\_95 (B1), Orwigg\_99 (B1), PG1\_95 (B1), Pacifista\_99 (B1), Phamished\_96 (B1), Phareon\_94 (B1), PhatCats2014\_96 (B1), PhatLouie\_99 (B1), PhenghisKhan\_97 (B1), Pherdinand\_98 (B1), Phergie\_97 (B1), Phipps\_94 (B1), Phleuron\_94 (B1), PhrankReynolds\_95 (B1), PhrodoBaggins\_99 (B1), Phunky\_94 (B1), Piglet\_0096 (B1), PinheadLarry\_96 (B1), Pinkman\_96 (B1), Pipsqueak\_94 (B1), Placalicious\_94 (B1), Plmatters\_94 (B1), Podrick\_95 (B1), Potter\_91 (B1), Prickles\_97 (B1), ProfessorX\_94 (B1), Puhltonio\_92 (B1), QueenBeane\_97 (B1), Quisquiliae\_99 (B1), RedMaple\_95 (B1), Ricotta\_98 (B1), Riggan\_98 (B1), Rimu\_100 (B1), Roliet\_94 (B1), Roscoe\_95 (B1), Roy17\_94 (B1), SDcharge11\_95 (B1), Samaymay\_97 (B1), SassyCat97\_95 (B1), Schadenfreude\_97 (B1), Schueller\_96 (B1), Scoot17C\_97 (B1), Scrick\_98 (B1), Selr12\_101 (B1), Serendipity\_96 (B1), Serpentine\_0099 (B1), Sheila\_91 (B1), ShiVal\_96 (B1), Sigman\_96 (B1), SilverBell\_98 (B1), Simielle\_97 (B1), Skippy\_97 (B1), Slatt\_99 (B1), Soile\_98 (B1), Solosis\_95 (B1), Sophia\_95 (B1), Soto\_93 (B1), Spartan300\_96 (B1), Squid\_96 (B1), Squiggle\_96 (B1), Struggle\_97 (B1), Suffolk\_92 (B1), Surely\_97 (B1), Swiphy\_101 (B1), Swish\_98 (B1), TallGrassMM\_96 (B1), Telesworld\_95 (B1), Thora\_95 (B1), ThreeOh3D2\_98 (B1), Thunderbird\_97 (B1), Timmi\_95 (B1), TomBombadil\_97 (B1), Tomlarah\_97 (B1), Toni\_96 (B1), Tooj\_94 (B1), True\_98 (B1), Trypo\_97 (B1), TyrionL\_97 (B1), UAch1\_97 (B1), UncleHowie\_93 (B1), Usavi\_97 (B1), Valjean\_95 (B1), Vaticameos\_94 (B1), Veritas\_96 (B1), Virapocalypse\_98 (B1), Virgeve\_95 (B1), Vista\_96 (B1), Vortex\_95 (B1), Wallhey\_98 (B1), Waterdiva\_98 (B1), Weher20\_94 (B1), Windsor\_96 (B1), Xavier\_96 (B1), Yoshand\_98 (B1), YouGoGlencoco\_97 (B1), Zaider\_98 (B1), Zelda\_97 (B1), Zonia\_97 (B1),

Start 15:

- Found in 273 of 328 ( 83.2% ) of genes in pham
- Manual Annotations of this start: 2 of 297
- Called 0.7% of time when present
- Phage (with cluster) where this start called: BlueHusk\_97 (B1), Horchata\_91 (B1),

Start 17:

- Found in 5 of 328 ( 1.5% ) of genes in pham
- Manual Annotations of this start: 1 of 297
- Called 20.0% of time when present
- Phage (with cluster) where this start called: Kheth\_84 (B2),

Start 19:

- Found in 31 of 328 ( 9.5% ) of genes in pham
- Manual Annotations of this start: 17 of 297
- Called 54.8% of time when present
- Phage (with cluster) where this start called: Arbiter\_81 (B2), Ares\_84 (B2), Bananafish\_85 (B2), Brownie5\_84 (B2), FrenchFry\_85 (B2), Glass\_86 (B2), Godines\_84 (B2), Hedgerow\_84 (B2), Holeinone\_84 (B2), ItsyBitsy1\_81 (B2), LizLemon\_84 (B2), Opia\_85 (B2), Qyrzula\_75 (B2), Rhinoforte\_84 (B2), Rosebush\_82 (B2), Sabella\_84 (B2), Tinciduntsolum\_85 (B2),

Start 20:

- Found in 32 of 328 ( 9.8% ) of genes in pham
- Manual Annotations of this start: 2 of 297
- Called 9.4% of time when present
- Phage (with cluster) where this start called: LilSmirk\_84 (B2), Tres\_84 (B2), West99\_84 (B2),

Start 22:

- Found in 3 of 328 ( 0.9% ) of genes in pham
- Manual Annotations of this start: 3 of 297
- Called 100.0% of time when present
- Phage (with cluster) where this start called: Acadian\_89 (B5), Donny\_89 (B5), Suigeneris\_90 (B5),

Start 23:

- Found in 1 of 328 ( 0.3% ) of genes in pham
- Manual Annotations of this start: 1 of 297
- Called 100.0% of time when present
- Phage (with cluster) where this start called: Zenteno07\_105 (B13),

Start 24:

- Found in 293 of 328 ( 89.3% ) of genes in pham
- Manual Annotations of this start: 14 of 297
- Called 6.5% of time when present
- Phage (with cluster) where this start called: Allegro\_84 (B2), Blocker23\_84 (B2), Boehler\_94 (B1), Boyle\_84 (B2), Calamitous\_85 (B2), Chunky\_95 (B1), Coffee\_83 (B2), ElvisPhasley\_102 (B1), Faze9\_83 (B2), HSavage\_94 (B1), Kaleb\_84 (B2), Kolhan\_85 (B2), Lars\_85 (B2), Laurie\_83 (B2), Lephleur\_84 (B2), MasterPo\_85 (B2), Phantasmagoria\_83 (B2), TA17A\_85 (B2), Vic9\_85 (B2),

Start 25:

- Found in 3 of 328 ( 0.9% ) of genes in pham
- Manual Annotations of this start: 1 of 297
- Called 100.0% of time when present
- Phage (with cluster) where this start called: ForDig\_89 (B6), Jolie1\_089 (B6), KayaCho\_87 (B6),

Start 27:

- Found in 1 of 328 ( 0.3% ) of genes in pham
- Manual Annotations of this start: 1 of 297
- Called 100.0% of time when present
- Phage (with cluster) where this start called: Imvubu\_92 (B10),

Start 28:

- Found in 287 of 328 ( 87.5% ) of genes in pham
- Manual Annotations of this start: 1 of 297
- Called 1.4% of time when present
- Phage (with cluster) where this start called: DigitDog\_91 (B5), Nangang\_90 (B5), Pops\_94 (B1), Shenyu\_90 (B5),

Start 32:

- Found in 244 of 328 ( 74.4% ) of genes in pham

- Manual Annotations of this start: 1 of 297
- Called 0.4% of time when present
- Phage (with cluster) where this start called: Indlovu\_88 (B11),

### **Summary by clusters:**

There are 7 clusters represented in this pham: B2, B5, B6, B1, B10, B11, B13,

Info for manual annotations of cluster B1:

- Start number 13 was manually annotated 253 times for cluster B1.
- Start number 15 was manually annotated 2 times for cluster B1.
- Start number 24 was manually annotated 3 times for cluster B1.
- Start number 28 was manually annotated 1 time for cluster B1.

Info for manual annotations of cluster B10:

- Start number 27 was manually annotated 1 time for cluster B10.

Info for manual annotations of cluster B11:

- Start number 32 was manually annotated 1 time for cluster B11.

Info for manual annotations of cluster B13:

- Start number 23 was manually annotated 1 time for cluster B13.

Info for manual annotations of cluster B2:

- Start number 17 was manually annotated 1 time for cluster B2.
- Start number 19 was manually annotated 17 times for cluster B2.
- Start number 20 was manually annotated 2 times for cluster B2.
- Start number 24 was manually annotated 11 times for cluster B2.

Info for manual annotations of cluster B5:

- Start number 22 was manually annotated 3 times for cluster B5.

Info for manual annotations of cluster B6:

- Start number 25 was manually annotated 1 time for cluster B6.

### **Gene Information:**

Gene: ABU\_95 Start: 67275, Stop: 66544, Start Num: 13

Candidate Starts for ABU\_95:

(Start: 13 @67275 has 253 MA's), (Start: 15 @67236 has 2 MA's), (16, 67209), (Start: 24 @67122 has 14 MA's), (Start: 28 @67083 has 1 MA's), (Start: 32 @67041 has 1 MA's), (40, 66915), (42, 66894), (44, 66882), (48, 66810), (55, 66696), (60, 66657), (62, 66639),

Gene: AbsoluteMadLad\_95 Start: 67228, Stop: 66497, Start Num: 13

Candidate Starts for AbsoluteMadLad\_95:

(Start: 13 @67228 has 253 MA's), (Start: 15 @67189 has 2 MA's), (16, 67162), (Start: 24 @67075 has 14 MA's), (Start: 28 @67036 has 1 MA's), (Start: 32 @66994 has 1 MA's), (40, 66868), (42, 66847), (44, 66835), (48, 66763), (55, 66649), (60, 66610), (62, 66592),

Gene: Acadian\_89 Start: 66018, Stop: 65326, Start Num: 22

Candidate Starts for Acadian\_89:



(2, 66897), (7, 66402), (18, 66072), (Start: 22 @66018 has 3 MA's), (Start: 28 @65943 has 1 MA's), (40, 65772), (41, 65763), (50, 65655), (57, 65538), (60, 65514), (62, 65496), (66, 65460), (72, 65379),

Gene: Adriana\_97 Start: 67547, Stop: 66816, Start Num: 13

Candidate Starts for Adriana\_97:

(Start: 13 @67547 has 253 MA's), (Start: 15 @67508 has 2 MA's), (16, 67481), (Start: 24 @67394 has 14 MA's), (Start: 28 @67355 has 1 MA's), (Start: 32 @67313 has 1 MA's), (40, 67187), (42, 67166), (44, 67154), (48, 67082), (55, 66968), (60, 66929), (62, 66911),

Gene: Aelin\_96 Start: 66908, Stop: 66177, Start Num: 13

Candidate Starts for Aelin\_96:

(9, 67127), (11, 67025), (Start: 13 @66908 has 253 MA's), (Start: 15 @66869 has 2 MA's), (16, 66842), (21, 66806), (Start: 24 @66755 has 14 MA's), (Start: 28 @66716 has 1 MA's), (40, 66548), (42, 66527), (44, 66515), (48, 66443), (55, 66329), (60, 66290), (62, 66272),

Gene: Allegro\_84 Start: 63711, Stop: 63181, Start Num: 24

Candidate Starts for Allegro\_84:

(12, 63888), (Start: 19 @63777 has 17 MA's), (Start: 20 @63759 has 2 MA's), (Start: 24 @63711 has 14 MA's), (26, 63684), (29, 63657), (30, 63648), (35, 63606), (36, 63597), (40, 63501), (44, 63465), (48, 63393), (53, 63297), (54, 63291), (58, 63249), (60, 63237),

Gene: AltPhacts\_94 Start: 66481, Stop: 65750, Start Num: 13

Candidate Starts for AltPhacts\_94:

(9, 66700), (11, 66598), (Start: 13 @66481 has 253 MA's), (Start: 15 @66442 has 2 MA's), (16, 66415), (Start: 24 @66328 has 14 MA's), (Start: 28 @66289 has 1 MA's), (Start: 32 @66247 has 1 MA's), (40, 66121), (42, 66100), (44, 66088), (48, 66016), (55, 65902), (60, 65863), (62, 65845),

Gene: Altwerkus\_94 Start: 66604, Stop: 65873, Start Num: 13

Candidate Starts for Altwerkus\_94:

(Start: 13 @66604 has 253 MA's), (Start: 15 @66565 has 2 MA's), (16, 66538), (Start: 24 @66451 has 14 MA's), (Start: 28 @66412 has 1 MA's), (Start: 32 @66370 has 1 MA's), (40, 66244), (42, 66223), (44, 66211), (48, 66139), (55, 66025), (60, 65986), (62, 65968),

Gene: Anderson\_98 Start: 67151, Stop: 66420, Start Num: 13

Candidate Starts for Anderson\_98:

(Start: 13 @67151 has 253 MA's), (Start: 15 @67112 has 2 MA's), (16, 67085), (Start: 24 @66998 has 14 MA's), (Start: 28 @66959 has 1 MA's), (Start: 32 @66917 has 1 MA's), (40, 66791), (42, 66770), (44, 66758), (48, 66686), (55, 66572), (60, 66533), (62, 66515),

Gene: Andre\_101 Start: 67542, Stop: 66811, Start Num: 13

Candidate Starts for Andre\_101:

(Start: 13 @67542 has 253 MA's), (Start: 15 @67503 has 2 MA's), (16, 67476), (Start: 24 @67389 has 14 MA's), (Start: 28 @67350 has 1 MA's), (Start: 32 @67308 has 1 MA's), (40, 67182), (42, 67161), (44, 67149), (48, 67077), (55, 66963), (60, 66924), (62, 66906),

Gene: AngelCake\_93 Start: 66900, Stop: 66169, Start Num: 13

Candidate Starts for AngelCake\_93:

(9, 67119), (11, 67017), (Start: 13 @66900 has 253 MA's), (Start: 15 @66861 has 2 MA's), (Start: 24 @66747 has 14 MA's), (Start: 28 @66708 has 1 MA's), (40, 66540), (42, 66519), (44, 66507), (48, 66435), (55, 66321), (60, 66282), (62, 66264),

Gene: Antonia\_96 Start: 66776, Stop: 66045, Start Num: 13

Candidate Starts for Antonia\_96:

(9, 66995), (11, 66893), (Start: 13 @66776 has 253 MA's), (Start: 15 @66737 has 2 MA's), (16, 66710), (21, 66674), (Start: 24 @66623 has 14 MA's), (Start: 28 @66584 has 1 MA's), (40, 66416), (42, 66395), (44, 66383), (48, 66311), (55, 66197), (60, 66158), (62, 66140),

Gene: Apizium\_95 Start: 66429, Stop: 65698, Start Num: 13

Candidate Starts for Apizium\_95:

(5, 66681), (9, 66648), (11, 66546), (Start: 13 @66429 has 253 MA's), (Start: 15 @66390 has 2 MA's), (16, 66363), (Start: 24 @66276 has 14 MA's), (Start: 28 @66237 has 1 MA's), (40, 66069), (42, 66048), (44, 66036), (48, 65964), (55, 65850), (60, 65811), (62, 65793),

Gene: Arbiter\_81 Start: 63817, Stop: 63221, Start Num: 19

Candidate Starts for Arbiter\_81:

(12, 63928), (Start: 19 @63817 has 17 MA's), (Start: 20 @63799 has 2 MA's), (Start: 24 @63751 has 14 MA's), (26, 63724), (29, 63697), (30, 63688), (35, 63646), (36, 63637), (40, 63541), (44, 63505), (48, 63433), (53, 63337), (54, 63331), (58, 63289), (60, 63277),

Gene: Ares\_84 Start: 63776, Stop: 63180, Start Num: 19

Candidate Starts for Ares\_84:

(12, 63887), (Start: 19 @63776 has 17 MA's), (Start: 20 @63758 has 2 MA's), (Start: 24 @63710 has 14 MA's), (26, 63683), (29, 63656), (30, 63647), (35, 63605), (36, 63596), (40, 63500), (44, 63464), (48, 63392), (53, 63296), (54, 63290), (58, 63248), (60, 63236),

Gene: Ashraf\_98 Start: 67284, Stop: 66532, Start Num: 13

Candidate Starts for Ashraf\_98:

(9, 67503), (11, 67401), (Start: 13 @67284 has 253 MA's), (Start: 15 @67245 has 2 MA's), (Start: 24 @67131 has 14 MA's), (Start: 28 @67092 has 1 MA's), (40, 66924), (42, 66903), (44, 66891), (48, 66819), (55, 66705), (60, 66666), (62, 66648),

Gene: Badfish\_97 Start: 67455, Stop: 66724, Start Num: 13

Candidate Starts for Badfish\_97:

(Start: 13 @67455 has 253 MA's), (Start: 15 @67416 has 2 MA's), (16, 67389), (Start: 24 @67302 has 14 MA's), (Start: 28 @67263 has 1 MA's), (Start: 32 @67221 has 1 MA's), (40, 67095), (42, 67074), (44, 67062), (48, 66990), (55, 66876), (60, 66837), (62, 66819),

Gene: Bananafish\_85 Start: 63713, Stop: 63117, Start Num: 19

Candidate Starts for Bananafish\_85:

(12, 63824), (Start: 19 @63713 has 17 MA's), (Start: 20 @63695 has 2 MA's), (Start: 24 @63647 has 14 MA's), (26, 63620), (29, 63593), (30, 63584), (35, 63542), (36, 63533), (40, 63437), (44, 63401), (48, 63329), (53, 63233), (54, 63227), (58, 63185), (60, 63173),

Gene: Banjo\_93 Start: 66721, Stop: 65990, Start Num: 13

Candidate Starts for Banjo\_93:

(Start: 13 @66721 has 253 MA's), (Start: 15 @66682 has 2 MA's), (16, 66655), (Start: 24 @66568 has 14 MA's), (Start: 28 @66529 has 1 MA's), (Start: 32 @66487 has 1 MA's), (40, 66361), (42, 66340), (44, 66328), (48, 66256), (55, 66142), (60, 66103), (62, 66085),

Gene: Basato\_95 Start: 66941, Stop: 66210, Start Num: 13

Candidate Starts for Basato\_95:

(Start: 13 @66941 has 253 MA's), (Start: 15 @66902 has 2 MA's), (16, 66875), (Start: 24 @66788 has 14 MA's), (Start: 28 @66749 has 1 MA's), (40, 66581), (42, 66560), (44, 66548), (48, 66476), (55, 66362), (60, 66323), (62, 66305),

Gene: BatteryCK\_95 Start: 66711, Stop: 65980, Start Num: 13

Candidate Starts for BatteryCK\_95:

(9, 66930), (11, 66828), (Start: 13 @66711 has 253 MA's), (Start: 15 @66672 has 2 MA's), (Start: 24 @66558 has 14 MA's), (Start: 28 @66519 has 1 MA's), (40, 66351), (42, 66330), (44, 66318), (48, 66246), (55, 66132), (60, 66093), (62, 66075),

Gene: Beaglebox\_93 Start: 66843, Stop: 66112, Start Num: 13

Candidate Starts for Beaglebox\_93:

(Start: 13 @66843 has 253 MA's), (Start: 15 @66804 has 2 MA's), (16, 66777), (Start: 24 @66690 has 14 MA's), (Start: 28 @66651 has 1 MA's), (Start: 32 @66609 has 1 MA's), (40, 66483), (42, 66462), (44, 66450), (48, 66378), (55, 66264), (60, 66225), (62, 66207),

Gene: Bishoperium\_97 Start: 67290, Stop: 66559, Start Num: 13

Candidate Starts for Bishoperium\_97:

(Start: 13 @67290 has 253 MA's), (Start: 15 @67251 has 2 MA's), (16, 67224), (Start: 24 @67137 has 14 MA's), (Start: 28 @67098 has 1 MA's), (Start: 32 @67056 has 1 MA's), (40, 66930), (42, 66909), (44, 66897), (48, 66825), (55, 66711), (60, 66672), (62, 66654),

Gene: BlackStallion\_96 Start: 67139, Stop: 66408, Start Num: 13

Candidate Starts for BlackStallion\_96:

(Start: 13 @67139 has 253 MA's), (Start: 15 @67100 has 2 MA's), (16, 67073), (Start: 24 @66986 has 14 MA's), (Start: 28 @66947 has 1 MA's), (Start: 32 @66905 has 1 MA's), (40, 66779), (42, 66758), (44, 66746), (48, 66674), (55, 66560), (60, 66521), (62, 66503),

Gene: Blocker23\_84 Start: 63711, Stop: 63181, Start Num: 24

Candidate Starts for Blocker23\_84:

(1, 65055), (3, 64545), (4, 64293), (6, 64113), (10, 63984), (Start: 17 @63789 has 1 MA's), (Start: 24 @63711 has 14 MA's), (26, 63684), (29, 63657), (30, 63648), (35, 63606), (36, 63597), (40, 63501), (44, 63465), (48, 63393), (53, 63297), (54, 63291), (58, 63249), (60, 63237),

Gene: BlueHusk\_97 Start: 66586, Stop: 65990, Start Num: 15

Candidate Starts for BlueHusk\_97:

(Start: 15 @66586 has 2 MA's), (Start: 28 @66529 has 1 MA's), (Start: 32 @66487 has 1 MA's), (40, 66361), (42, 66340), (44, 66328), (48, 66256), (55, 66142), (60, 66103), (62, 66085),

Gene: Bluephacebaby\_96 Start: 67324, Stop: 66593, Start Num: 13

Candidate Starts for Bluephacebaby\_96:

(Start: 13 @67324 has 253 MA's), (Start: 15 @67285 has 2 MA's), (16, 67258), (Start: 24 @67171 has 14 MA's), (Start: 28 @67132 has 1 MA's), (Start: 32 @67090 has 1 MA's), (40, 66964), (42, 66943), (44, 66931), (48, 66859), (55, 66745), (60, 66706), (62, 66688),

Gene: Boehler\_94 Start: 66718, Stop: 66140, Start Num: 24

Candidate Starts for Boehler\_94:

(Start: 24 @66718 has 14 MA's), (Start: 28 @66679 has 1 MA's), (Start: 32 @66637 has 1 MA's), (40, 66511), (42, 66490), (44, 66478), (48, 66406), (55, 66292), (60, 66253), (62, 66235),

Gene: Boyle\_84 Start: 63759, Stop: 63229, Start Num: 24

Candidate Starts for Boyle\_84:

(12, 63936), (Start: 19 @63825 has 17 MA's), (Start: 20 @63807 has 2 MA's), (Start: 24 @63759 has 14 MA's), (26, 63732), (29, 63705), (30, 63696), (35, 63654), (36, 63645), (40, 63549), (44, 63513), (48, 63441), (53, 63345), (54, 63339), (58, 63297), (60, 63285),

Gene: Brilliant\_100 Start: 67303, Stop: 66572, Start Num: 13

Candidate Starts for Brilliant\_100:

(Start: 13 @67303 has 253 MA's), (Start: 15 @67264 has 2 MA's), (16, 67237), (Start: 24 @67150 has 14 MA's), (Start: 28 @67111 has 1 MA's), (Start: 32 @67069 has 1 MA's), (40, 66943), (42, 66922), (44, 66910), (48, 66838), (55, 66724), (60, 66685), (62, 66667),

Gene: Brownie5\_84 Start: 63825, Stop: 63229, Start Num: 19

Candidate Starts for Brownie5\_84:

(12, 63936), (Start: 19 @63825 has 17 MA's), (Start: 20 @63807 has 2 MA's), (Start: 24 @63759 has 14 MA's), (26, 63732), (29, 63705), (30, 63696), (35, 63654), (36, 63645), (40, 63549), (44, 63513), (48, 63441), (53, 63345), (54, 63339), (58, 63297), (60, 63285),

Gene: Buckeye\_95 Start: 67599, Stop: 66868, Start Num: 13

Candidate Starts for Buckeye\_95:

(Start: 13 @67599 has 253 MA's), (Start: 15 @67560 has 2 MA's), (16, 67533), (Start: 24 @67446 has 14 MA's), (Start: 28 @67407 has 1 MA's), (Start: 32 @67365 has 1 MA's), (40, 67239), (42, 67218), (44, 67206), (48, 67134), (55, 67020), (60, 66981), (62, 66963),

Gene: Burr\_99 Start: 67145, Stop: 66414, Start Num: 13

Candidate Starts for Burr\_99:

(Start: 13 @67145 has 253 MA's), (Start: 15 @67106 has 2 MA's), (16, 67079), (Start: 24 @66992 has 14 MA's), (Start: 28 @66953 has 1 MA's), (Start: 32 @66911 has 1 MA's), (40, 66785), (42, 66764), (44, 66752), (48, 66680), (55, 66566), (60, 66527), (62, 66509),

Gene: Calamitous\_85 Start: 63642, Stop: 63112, Start Num: 24

Candidate Starts for Calamitous\_85:

(12, 63819), (Start: 19 @63708 has 17 MA's), (Start: 20 @63690 has 2 MA's), (Start: 24 @63642 has 14 MA's), (26, 63615), (29, 63588), (30, 63579), (35, 63537), (36, 63528), (40, 63432), (44, 63396), (48, 63324), (53, 63228), (54, 63222), (58, 63180), (60, 63168),

Gene: CamL\_97 Start: 67075, Stop: 66344, Start Num: 13

Candidate Starts for CamL\_97:

(Start: 13 @67075 has 253 MA's), (Start: 15 @67036 has 2 MA's), (16, 67009), (Start: 24 @66922 has 14 MA's), (Start: 28 @66883 has 1 MA's), (Start: 32 @66841 has 1 MA's), (40, 66715), (42, 66694), (44, 66682), (48, 66610), (55, 66496), (60, 66457), (62, 66439),

Gene: CampRoach\_97 Start: 67171, Stop: 66440, Start Num: 13

Candidate Starts for CampRoach\_97:

(Start: 13 @67171 has 253 MA's), (Start: 15 @67132 has 2 MA's), (16, 67105), (Start: 28 @66979 has 1 MA's), (Start: 32 @66937 has 1 MA's), (40, 66811), (42, 66790), (44, 66778), (48, 66706), (55, 66592), (60, 66553), (62, 66535),

Gene: Cannibal\_97 Start: 67178, Stop: 66447, Start Num: 13

Candidate Starts for Cannibal\_97:

(Start: 13 @67178 has 253 MA's), (Start: 15 @67139 has 2 MA's), (16, 67112), (Start: 24 @67025 has 14 MA's), (Start: 28 @66986 has 1 MA's), (Start: 32 @66944 has 1 MA's), (40, 66818), (42, 66797), (44, 66785), (48, 66713), (55, 66599), (60, 66560), (62, 66542),

Gene: Carthage\_97 Start: 66633, Stop: 65902, Start Num: 13

Candidate Starts for Carthage\_97:

(Start: 13 @66633 has 253 MA's), (16, 66567), (Start: 24 @66480 has 14 MA's), (Start: 28 @66441 has 1 MA's), (40, 66273), (42, 66252), (44, 66240), (55, 66054), (60, 66015), (62, 65997),

Gene: Caspiboi\_98 Start: 67009, Stop: 66278, Start Num: 13

Candidate Starts for Caspiboi\_98:

(Start: 13 @67009 has 253 MA's), (Start: 15 @66970 has 2 MA's), (16, 66943), (Start: 28 @66817 has 1 MA's), (Start: 32 @66775 has 1 MA's), (40, 66649), (42, 66628), (44, 66616), (48, 66544), (55, 66430), (60, 66391), (62, 66373),

Gene: Chaelin\_97 Start: 67047, Stop: 66295, Start Num: 13

Candidate Starts for Chaelin\_97:

(9, 67266), (11, 67164), (Start: 13 @67047 has 253 MA's), (Start: 15 @67008 has 2 MA's), (Start: 24 @66894 has 14 MA's), (Start: 28 @66855 has 1 MA's), (40, 66687), (42, 66666), (44, 66654), (48, 66582), (55, 66468), (60, 66429), (62, 66411),

Gene: Chah\_99 Start: 66875, Stop: 66144, Start Num: 13

Candidate Starts for Chah\_99:

(Start: 13 @66875 has 253 MA's), (Start: 15 @66836 has 2 MA's), (16, 66809), (Start: 24 @66722 has 14 MA's), (Start: 28 @66683 has 1 MA's), (Start: 32 @66641 has 1 MA's), (40, 66515), (42, 66494), (44, 66482), (48, 66410), (55, 66296), (60, 66257), (62, 66239),

Gene: Charles1\_100 Start: 67453, Stop: 66722, Start Num: 13

Candidate Starts for Charles1\_100:

(Start: 13 @67453 has 253 MA's), (Start: 15 @67414 has 2 MA's), (16, 67387), (Start: 24 @67300 has 14 MA's), (Start: 28 @67261 has 1 MA's), (Start: 32 @67219 has 1 MA's), (40, 67093), (42, 67072), (44, 67060), (48, 66988), (55, 66874), (60, 66835), (62, 66817),

Gene: CharlieGBrown\_95 Start: 66806, Stop: 66075, Start Num: 13

Candidate Starts for CharlieGBrown\_95:

(9, 67025), (11, 66923), (Start: 13 @66806 has 253 MA's), (Start: 15 @66767 has 2 MA's), (Start: 24 @66653 has 14 MA's), (Start: 28 @66614 has 1 MA's), (40, 66446), (42, 66425), (44, 66413), (48, 66341), (55, 66227), (60, 66188), (62, 66170),

Gene: CheetO\_93 Start: 66925, Stop: 66194, Start Num: 13

Candidate Starts for CheetO\_93:

(Start: 13 @66925 has 253 MA's), (Start: 15 @66886 has 2 MA's), (16, 66859), (Start: 24 @66772 has 14 MA's), (Start: 28 @66733 has 1 MA's), (Start: 32 @66691 has 1 MA's), (40, 66565), (42, 66544), (44, 66532), (48, 66460), (55, 66346), (60, 66307), (62, 66289),

Gene: Cher\_97 Start: 67279, Stop: 66548, Start Num: 13

Candidate Starts for Cher\_97:

(Start: 13 @67279 has 253 MA's), (Start: 15 @67240 has 2 MA's), (16, 67213), (Start: 24 @67126 has 14 MA's), (Start: 28 @67087 has 1 MA's), (Start: 32 @67045 has 1 MA's), (40, 66919), (42, 66898), (44, 66886), (48, 66814), (55, 66700), (60, 66661), (62, 66643),

Gene: Childish\_97 Start: 67469, Stop: 66738, Start Num: 13

Candidate Starts for Childish\_97:

(Start: 13 @67469 has 253 MA's), (Start: 15 @67430 has 2 MA's), (16, 67403), (Start: 24 @67316 has 14 MA's), (Start: 28 @67277 has 1 MA's), (Start: 32 @67235 has 1 MA's), (40, 67109), (42, 67088), (44, 67076), (48, 67004), (55, 66890), (60, 66851), (62, 66833),

Gene: Chorkpop\_98 Start: 66931, Stop: 66200, Start Num: 13

Candidate Starts for Chorkpop\_98:

(Start: 13 @66931 has 253 MA's), (Start: 15 @66892 has 2 MA's), (16, 66865), (Start: 28 @66739 has 1 MA's), (Start: 32 @66697 has 1 MA's), (40, 66571), (42, 66550), (44, 66538), (48, 66466), (55, 66352), (60, 66313), (62, 66295),

Gene: Chunky\_95 Start: 66380, Stop: 65802, Start Num: 24

Candidate Starts for Chunky\_95:

(Start: 24 @66380 has 14 MA's), (Start: 28 @66341 has 1 MA's), (Start: 32 @66299 has 1 MA's), (40, 66173), (42, 66152), (44, 66140), (48, 66068), (55, 65954), (60, 65915), (62, 65897),

Gene: Chute\_97 Start: 67470, Stop: 66739, Start Num: 13

Candidate Starts for Chute\_97:

(Start: 13 @67470 has 253 MA's), (Start: 15 @67431 has 2 MA's), (16, 67404), (Start: 24 @67317 has 14 MA's), (Start: 28 @67278 has 1 MA's), (Start: 32 @67236 has 1 MA's), (40, 67110), (42, 67089), (44, 67077), (48, 67005), (55, 66891), (60, 66852), (62, 66834),

Gene: Cobra\_97 Start: 67300, Stop: 66569, Start Num: 13

Candidate Starts for Cobra\_97:

(Start: 13 @67300 has 253 MA's), (Start: 15 @67261 has 2 MA's), (16, 67234), (Start: 24 @67147 has 14 MA's), (Start: 28 @67108 has 1 MA's), (Start: 32 @67066 has 1 MA's), (40, 66940), (42, 66919), (44, 66907), (48, 66835), (55, 66721), (60, 66682), (62, 66664),

Gene: Coffee\_83 Start: 63752, Stop: 63222, Start Num: 24

Candidate Starts for Coffee\_83:

(12, 63929), (Start: 19 @63818 has 17 MA's), (Start: 20 @63800 has 2 MA's), (Start: 24 @63752 has 14 MA's), (26, 63725), (29, 63698), (30, 63689), (35, 63647), (36, 63638), (40, 63542), (44, 63506), (48, 63434), (53, 63338), (54, 63332), (58, 63290), (60, 63278),

Gene: Colbert\_95 Start: 66199, Stop: 65468, Start Num: 13

Candidate Starts for Colbert\_95:

(Start: 13 @66199 has 253 MA's), (Start: 15 @66160 has 2 MA's), (16, 66133), (Start: 24 @66046 has 14 MA's), (Start: 28 @66007 has 1 MA's), (Start: 32 @65965 has 1 MA's), (40, 65839), (42, 65818), (44, 65806), (48, 65734), (55, 65620), (60, 65581), (62, 65563),

Gene: Coletti\_99 Start: 67826, Stop: 67095, Start Num: 13

Candidate Starts for Coletti\_99:

(Start: 13 @67826 has 253 MA's), (Start: 15 @67787 has 2 MA's), (16, 67760), (Start: 24 @67673 has 14 MA's), (Start: 28 @67634 has 1 MA's), (Start: 32 @67592 has 1 MA's), (40, 67466), (42, 67445), (44, 67433), (48, 67361), (55, 67247), (60, 67208), (62, 67190),

Gene: Cornobble\_95 Start: 66927, Stop: 66196, Start Num: 13

Candidate Starts for Cornobble\_95:

(9, 67146), (11, 67044), (Start: 13 @66927 has 253 MA's), (Start: 15 @66888 has 2 MA's), (16, 66861), (21, 66825), (Start: 24 @66774 has 14 MA's), (Start: 28 @66735 has 1 MA's), (40, 66567), (42, 66546), (44, 66534), (48, 66462), (55, 66348), (60, 66309), (62, 66291),

Gene: Cosmolli16\_98 Start: 67403, Stop: 66672, Start Num: 13

Candidate Starts for Cosmolli16\_98:

(Start: 13 @67403 has 253 MA's), (Start: 15 @67364 has 2 MA's), (16, 67337), (Start: 24 @67250 has 14 MA's), (Start: 28 @67211 has 1 MA's), (Start: 32 @67169 has 1 MA's), (40, 67043), (42, 67022), (44, 67010), (48, 66938), (55, 66824), (60, 66785), (62, 66767),

Gene: Craff\_98 Start: 67688, Stop: 66957, Start Num: 13

Candidate Starts for Craff\_98:

(Start: 13 @67688 has 253 MA's), (Start: 15 @67649 has 2 MA's), (16, 67622), (Start: 24 @67535 has 14 MA's), (Start: 28 @67496 has 1 MA's), (Start: 32 @67454 has 1 MA's), (40, 67328), (42, 67307), (44, 67295), (48, 67223), (55, 67109), (60, 67070), (62, 67052),

Gene: Crownjwl\_94 Start: 66943, Stop: 66212, Start Num: 13

Candidate Starts for Crownjwl\_94:

(Start: 13 @66943 has 253 MA's), (Start: 15 @66904 has 2 MA's), (16, 66877), (Start: 24 @66790 has 14 MA's), (Start: 28 @66751 has 1 MA's), (Start: 32 @66709 has 1 MA's), (40, 66583), (42, 66562), (44, 66550), (48, 66478), (55, 66364), (60, 66325), (62, 66307),

Gene: DaddyDaniels\_100 Start: 67422, Stop: 66691, Start Num: 13

Candidate Starts for DaddyDaniels\_100:

(Start: 13 @67422 has 253 MA's), (Start: 15 @67383 has 2 MA's), (16, 67356), (Start: 24 @67269 has 14 MA's), (Start: 28 @67230 has 1 MA's), (Start: 32 @67188 has 1 MA's), (40, 67062), (42, 67041), (44, 67029), (48, 66957), (55, 66843), (60, 66804), (62, 66786),

Gene: Daffy\_96 Start: 66916, Stop: 66185, Start Num: 13

Candidate Starts for Daffy\_96:

(Start: 13 @66916 has 253 MA's), (Start: 15 @66877 has 2 MA's), (16, 66850), (Start: 24 @66763 has 14 MA's), (Start: 28 @66724 has 1 MA's), (Start: 32 @66682 has 1 MA's), (40, 66556), (42, 66535), (44, 66523), (48, 66451), (55, 66337), (60, 66298), (62, 66280),

Gene: Daka\_98 Start: 66879, Stop: 66148, Start Num: 13

Candidate Starts for Daka\_98:

(9, 67098), (11, 66996), (Start: 13 @66879 has 253 MA's), (Start: 15 @66840 has 2 MA's), (16, 66813), (21, 66777), (Start: 24 @66726 has 14 MA's), (Start: 28 @66687 has 1 MA's), (40, 66519), (42, 66498), (44, 66486), (55, 66300), (60, 66261), (62, 66243),

Gene: Dati\_94 Start: 67101, Stop: 66370, Start Num: 13

Candidate Starts for Dati\_94:

(Start: 13 @67101 has 253 MA's), (Start: 15 @67062 has 2 MA's), (16, 67035), (Start: 24 @66948 has 14 MA's), (Start: 28 @66909 has 1 MA's), (Start: 32 @66867 has 1 MA's), (40, 66741), (42, 66720), (44, 66708), (48, 66636), (55, 66522), (60, 66483), (62, 66465),

Gene: DelRivs\_96 Start: 66730, Stop: 65999, Start Num: 13

Candidate Starts for DelRivs\_96:

(Start: 13 @66730 has 253 MA's), (Start: 15 @66691 has 2 MA's), (16, 66664), (Start: 24 @66577 has 14 MA's), (Start: 28 @66538 has 1 MA's), (Start: 32 @66496 has 1 MA's), (40, 66370), (42, 66349), (44, 66337), (48, 66265), (55, 66151), (60, 66112), (62, 66094),

Gene: Derpp\_96 Start: 66839, Stop: 66108, Start Num: 13

Candidate Starts for Derpp\_96:

(9, 67058), (11, 66956), (Start: 13 @66839 has 253 MA's), (Start: 15 @66800 has 2 MA's), (Start: 24 @66686 has 14 MA's), (Start: 28 @66647 has 1 MA's), (40, 66479), (42, 66458), (44, 66446), (48, 66374), (55, 66260), (60, 66221), (62, 66203),

Gene: Dice\_97 Start: 66762, Stop: 66031, Start Num: 13

Candidate Starts for Dice\_97:

(Start: 13 @66762 has 253 MA's), (Start: 15 @66723 has 2 MA's), (16, 66696), (Start: 24 @66609 has 14 MA's), (Start: 28 @66570 has 1 MA's), (Start: 32 @66528 has 1 MA's), (40, 66402), (42, 66381), (44, 66369), (48, 66297), (55, 66183), (60, 66144), (62, 66126),

Gene: DigitDog\_91 Start: 66458, Stop: 65841, Start Num: 28

Candidate Starts for DigitDog\_91:

(7, 66893), (18, 66563), (Start: 28 @66458 has 1 MA's), (40, 66290), (41, 66281), (50, 66173), (57, 66056), (60, 66032), (62, 66014), (70, 65921),

Gene: Dingo\_93 Start: 66204, Stop: 65473, Start Num: 13

Candidate Starts for Dingo\_93:

(Start: 13 @66204 has 253 MA's), (Start: 15 @66165 has 2 MA's), (16, 66138), (Start: 24 @66051 has 14 MA's), (Start: 28 @66012 has 1 MA's), (40, 65844), (42, 65823), (44, 65811), (48, 65739), (55, 65625), (60, 65586), (62, 65568),

Gene: Dione\_95 Start: 66482, Stop: 65751, Start Num: 13

Candidate Starts for Dione\_95:

(Start: 13 @66482 has 253 MA's), (Start: 15 @66443 has 2 MA's), (16, 66416), (Start: 24 @66329 has 14 MA's), (Start: 28 @66290 has 1 MA's), (Start: 32 @66248 has 1 MA's), (40, 66122), (42, 66101), (44, 66089), (48, 66017), (55, 65903), (60, 65864), (62, 65846),

Gene: DirtJuice\_98 Start: 67591, Stop: 66860, Start Num: 13

Candidate Starts for DirtJuice\_98:

(Start: 13 @67591 has 253 MA's), (Start: 15 @67552 has 2 MA's), (16, 67525), (Start: 24 @67438 has 14 MA's), (Start: 28 @67399 has 1 MA's), (Start: 32 @67357 has 1 MA's), (40, 67231), (42, 67210), (44, 67198), (48, 67126), (55, 67012), (60, 66973), (62, 66955),

Gene: Doddsville\_94 Start: 66922, Stop: 66191, Start Num: 13

Candidate Starts for Doddsville\_94:

(Start: 13 @66922 has 253 MA's), (Start: 15 @66883 has 2 MA's), (16, 66856), (Start: 24 @66769 has 14 MA's), (Start: 28 @66730 has 1 MA's), (Start: 32 @66688 has 1 MA's), (40, 66562), (42, 66541), (44, 66529), (48, 66457), (55, 66343), (60, 66304), (62, 66286),

Gene: DoesntMatter\_94 Start: 66756, Stop: 66025, Start Num: 13

Candidate Starts for DoesntMatter\_94:

(Start: 13 @66756 has 253 MA's), (Start: 15 @66717 has 2 MA's), (16, 66690), (Start: 24 @66603 has 14 MA's), (Start: 28 @66564 has 1 MA's), (Start: 32 @66522 has 1 MA's), (40, 66396), (42, 66375), (44, 66363), (48, 66291), (55, 66177), (60, 66138), (62, 66120),

Gene: DonSanchon\_92 Start: 66440, Stop: 65709, Start Num: 13

Candidate Starts for DonSanchon\_92:

(Start: 13 @66440 has 253 MA's), (Start: 15 @66401 has 2 MA's), (16, 66374), (Start: 24 @66287 has 14 MA's), (Start: 28 @66248 has 1 MA's), (Start: 32 @66206 has 1 MA's), (40, 66080), (42, 66059), (44, 66047), (48, 65975), (55, 65861), (60, 65822), (62, 65804),

Gene: Donny\_89 Start: 65845, Stop: 65159, Start Num: 22

Candidate Starts for Donny\_89:

(2, 66724), (7, 66229), (18, 65899), (Start: 22 @65845 has 3 MA's), (Start: 28 @65770 has 1 MA's), (40, 65605), (41, 65596), (50, 65488), (57, 65371), (60, 65347), (62, 65329), (66, 65293), (72, 65212),

Gene: DuchessDung\_94 Start: 66437, Stop: 65706, Start Num: 13

Candidate Starts for DuchessDung\_94:

(Start: 13 @66437 has 253 MA's), (Start: 15 @66398 has 2 MA's), (16, 66371), (Start: 28 @66245 has 1 MA's), (40, 66077), (42, 66056), (44, 66044), (48, 65972), (55, 65858), (60, 65819), (62, 65801),

Gene: Duggie\_97 Start: 67064, Stop: 66333, Start Num: 13

Candidate Starts for Duggie\_97:

(Start: 13 @67064 has 253 MA's), (Start: 15 @67025 has 2 MA's), (16, 66998), (Start: 24 @66911 has 14 MA's), (Start: 28 @66872 has 1 MA's), (Start: 32 @66830 has 1 MA's), (40, 66704), (42, 66683), (44, 66671), (48, 66599), (55, 66485), (60, 66446), (62, 66428),

Gene: Durga\_99 Start: 67545, Stop: 66814, Start Num: 13

Candidate Starts for Durga\_99:



(Start: 13 @67545 has 253 MA's), (Start: 15 @67506 has 2 MA's), (16, 67479), (Start: 28 @67353 has 1 MA's), (Start: 32 @67311 has 1 MA's), (40, 67185), (42, 67164), (44, 67152), (48, 67080), (55, 66966), (60, 66927), (62, 66909),

Gene: ElvisPhasley\_102 Start: 67655, Stop: 67077, Start Num: 24

Candidate Starts for ElvisPhasley\_102:

(Start: 24 @67655 has 14 MA's), (Start: 28 @67616 has 1 MA's), (Start: 32 @67574 has 1 MA's), (40, 67448), (42, 67427), (44, 67415), (48, 67343), (55, 67229), (60, 67190), (62, 67172),

Gene: Emiris\_99 Start: 67452, Stop: 66721, Start Num: 13

Candidate Starts for Emiris\_99:

(Start: 13 @67452 has 253 MA's), (Start: 15 @67413 has 2 MA's), (16, 67386), (Start: 24 @67299 has 14 MA's), (Start: 28 @67260 has 1 MA's), (Start: 32 @67218 has 1 MA's), (40, 67092), (42, 67071), (44, 67059), (48, 66987), (55, 66873), (60, 66834), (62, 66816),

Gene: EmpTee\_96 Start: 66853, Stop: 66122, Start Num: 13

Candidate Starts for EmpTee\_96:

(Start: 13 @66853 has 253 MA's), (Start: 15 @66814 has 2 MA's), (16, 66787), (Start: 24 @66700 has 14 MA's), (Start: 28 @66661 has 1 MA's), (Start: 32 @66619 has 1 MA's), (40, 66493), (42, 66472), (44, 66460), (48, 66388), (55, 66274), (60, 66235), (62, 66217),

Gene: Eremos\_94 Start: 66900, Stop: 66169, Start Num: 13

Candidate Starts for Eremos\_94:

(Start: 13 @66900 has 253 MA's), (Start: 15 @66861 has 2 MA's), (16, 66834), (Start: 24 @66747 has 14 MA's), (Start: 28 @66708 has 1 MA's), (Start: 32 @66666 has 1 MA's), (40, 66540), (42, 66519), (44, 66507), (55, 66321), (60, 66282), (62, 66264),

Gene: Etaye\_96 Start: 67629, Stop: 66898, Start Num: 13

Candidate Starts for Etaye\_96:

(Start: 13 @67629 has 253 MA's), (Start: 15 @67590 has 2 MA's), (16, 67563), (Start: 24 @67476 has 14 MA's), (Start: 28 @67437 has 1 MA's), (Start: 32 @67395 has 1 MA's), (40, 67269), (42, 67248), (44, 67236), (48, 67164), (55, 67050), (60, 67011), (62, 66993),

Gene: Eugenia\_99 Start: 67564, Stop: 66833, Start Num: 13

Candidate Starts for Eugenia\_99:

(Start: 13 @67564 has 253 MA's), (Start: 15 @67525 has 2 MA's), (16, 67498), (Start: 24 @67411 has 14 MA's), (Start: 28 @67372 has 1 MA's), (Start: 32 @67330 has 1 MA's), (40, 67204), (42, 67183), (44, 67171), (48, 67099), (55, 66985), (60, 66946), (62, 66928),

Gene: Fang\_97 Start: 66994, Stop: 66263, Start Num: 13

Candidate Starts for Fang\_97:

(Start: 13 @66994 has 253 MA's), (Start: 15 @66955 has 2 MA's), (16, 66928), (Start: 24 @66841 has 14 MA's), (Start: 28 @66802 has 1 MA's), (Start: 32 @66760 has 1 MA's), (40, 66634), (42, 66613), (44, 66601), (48, 66529), (55, 66415), (60, 66376), (62, 66358),

Gene: Faze9\_83 Start: 63774, Stop: 63244, Start Num: 24

Candidate Starts for Faze9\_83:

(12, 63951), (Start: 19 @63840 has 17 MA's), (Start: 20 @63822 has 2 MA's), (Start: 24 @63774 has 14 MA's), (26, 63747), (29, 63720), (30, 63711), (35, 63669), (36, 63660), (40, 63564), (44, 63528), (48, 63456), (53, 63360), (54, 63354), (58, 63312), (60, 63300),

Gene: FluffyNinja\_98 Start: 67141, Stop: 66410, Start Num: 13

Candidate Starts for FluffyNinja\_98:

(Start: 13 @67141 has 253 MA's), (Start: 15 @67102 has 2 MA's), (16, 67075), (Start: 24 @66988 has 14 MA's), (Start: 28 @66949 has 1 MA's), (Start: 32 @66907 has 1 MA's), (40, 66781), (42, 66760), (44, 66748), (48, 66676), (55, 66562), (60, 66523), (62, 66505),

Gene: ForDig\_89 Start: 66193, Stop: 65561, Start Num: 25

Candidate Starts for ForDig\_89:

(14, 66334), (Start: 25 @66193 has 1 MA's), (31, 66124), (33, 66115), (40, 65995), (41, 65986), (43, 65965), (48, 65893), (50, 65881), (59, 65740), (60, 65737), (62, 65719), (65, 65692), (68, 65650),

Gene: Fozzie\_93 Start: 67190, Stop: 66459, Start Num: 13

Candidate Starts for Fozzie\_93:

(Start: 13 @67190 has 253 MA's), (Start: 15 @67151 has 2 MA's), (16, 67124), (Start: 28 @66998 has 1 MA's), (Start: 32 @66956 has 1 MA's), (40, 66830), (42, 66809), (44, 66797), (48, 66725), (55, 66611), (60, 66572), (62, 66554),

Gene: Frankicide\_94 Start: 66690, Stop: 65959, Start Num: 13

Candidate Starts for Frankicide\_94:

(9, 66909), (11, 66807), (Start: 13 @66690 has 253 MA's), (Start: 15 @66651 has 2 MA's), (16, 66624), (21, 66588), (Start: 24 @66537 has 14 MA's), (Start: 28 @66498 has 1 MA's), (Start: 32 @66456 has 1 MA's), (40, 66330), (42, 66309), (44, 66297), (48, 66225), (55, 66111), (60, 66072), (62, 66054),

Gene: FrenchFry\_85 Start: 63827, Stop: 63231, Start Num: 19

Candidate Starts for FrenchFry\_85:

(12, 63938), (Start: 19 @63827 has 17 MA's), (Start: 20 @63809 has 2 MA's), (Start: 24 @63761 has 14 MA's), (26, 63734), (29, 63707), (30, 63698), (35, 63656), (36, 63647), (40, 63551), (44, 63515), (48, 63443), (53, 63347), (54, 63341), (58, 63299), (60, 63287),

Gene: Freya\_93 Start: 66460, Stop: 65729, Start Num: 13

Candidate Starts for Freya\_93:

(Start: 13 @66460 has 253 MA's), (Start: 15 @66421 has 2 MA's), (16, 66394), (Start: 24 @66307 has 14 MA's), (Start: 28 @66268 has 1 MA's), (Start: 32 @66226 has 1 MA's), (40, 66100), (42, 66079), (44, 66067), (48, 65995), (55, 65881), (60, 65842), (62, 65824),

Gene: FriarPreacher\_94 Start: 66839, Stop: 66108, Start Num: 13

Candidate Starts for FriarPreacher\_94:

(Start: 13 @66839 has 253 MA's), (Start: 15 @66800 has 2 MA's), (16, 66773), (Start: 24 @66686 has 14 MA's), (Start: 28 @66647 has 1 MA's), (Start: 32 @66605 has 1 MA's), (40, 66479), (42, 66458), (44, 66446), (48, 66374), (55, 66260), (60, 66221), (62, 66203),

Gene: Fringe\_101 Start: 67616, Stop: 66885, Start Num: 13

Candidate Starts for Fringe\_101:

(Start: 13 @67616 has 253 MA's), (Start: 15 @67577 has 2 MA's), (16, 67550), (Start: 24 @67463 has 14 MA's), (Start: 28 @67424 has 1 MA's), (Start: 32 @67382 has 1 MA's), (40, 67256), (42, 67235), (44, 67223), (48, 67151), (55, 67037), (60, 66998), (62, 66980),

Gene: FugateOSU\_97 Start: 67901, Stop: 67170, Start Num: 13

Candidate Starts for FugateOSU\_97:

(Start: 13 @67901 has 253 MA's), (Start: 15 @67862 has 2 MA's), (16, 67835), (Start: 24 @67748 has 14 MA's), (Start: 28 @67709 has 1 MA's), (Start: 32 @67667 has 1 MA's), (40, 67541), (42, 67520), (44, 67508), (48, 67436), (55, 67322), (60, 67283), (62, 67265),

Gene: Gareth\_97 Start: 67290, Stop: 66559, Start Num: 13

Candidate Starts for Gareth\_97:

(Start: 13 @67290 has 253 MA's), (Start: 15 @67251 has 2 MA's), (16, 67224), (Start: 24 @67137 has 14 MA's), (Start: 28 @67098 has 1 MA's), (Start: 32 @67056 has 1 MA's), (40, 66930), (42, 66909), (44, 66897), (48, 66825), (55, 66711), (60, 66672), (62, 66654),

Gene: GeneCoco\_96 Start: 67226, Stop: 66495, Start Num: 13

Candidate Starts for GeneCoco\_96:

(Start: 13 @67226 has 253 MA's), (Start: 15 @67187 has 2 MA's), (16, 67160), (Start: 24 @67073 has 14 MA's), (Start: 28 @67034 has 1 MA's), (Start: 32 @66992 has 1 MA's), (40, 66866), (42, 66845), (44, 66833), (48, 66761), (55, 66647), (60, 66608), (62, 66590),

Gene: Giraffe\_98 Start: 67294, Stop: 66563, Start Num: 13

Candidate Starts for Giraffe\_98:

(Start: 13 @67294 has 253 MA's), (Start: 15 @67255 has 2 MA's), (16, 67228), (Start: 24 @67141 has 14 MA's), (Start: 28 @67102 has 1 MA's), (Start: 32 @67060 has 1 MA's), (40, 66934), (42, 66913), (44, 66901), (48, 66829), (55, 66715), (60, 66676), (62, 66658),

Gene: Glass\_86 Start: 63834, Stop: 63238, Start Num: 19

Candidate Starts for Glass\_86:

(12, 63945), (Start: 19 @63834 has 17 MA's), (Start: 20 @63816 has 2 MA's), (Start: 24 @63768 has 14 MA's), (26, 63741), (30, 63705), (35, 63663), (36, 63654), (40, 63558), (44, 63522), (48, 63450), (53, 63354), (54, 63348), (58, 63306), (60, 63294),

Gene: Godines\_84 Start: 63740, Stop: 63144, Start Num: 19

Candidate Starts for Godines\_84:

(12, 63851), (Start: 19 @63740 has 17 MA's), (Start: 20 @63722 has 2 MA's), (Start: 24 @63674 has 14 MA's), (26, 63647), (30, 63611), (35, 63569), (36, 63560), (40, 63464), (44, 63428), (48, 63356), (53, 63260), (54, 63254), (58, 63212), (60, 63200),

Gene: Gophee\_96 Start: 67281, Stop: 66550, Start Num: 13

Candidate Starts for Gophee\_96:

(Start: 13 @67281 has 253 MA's), (Start: 15 @67242 has 2 MA's), (16, 67215), (Start: 24 @67128 has 14 MA's), (Start: 28 @67089 has 1 MA's), (Start: 32 @67047 has 1 MA's), (40, 66921), (42, 66900), (44, 66888), (48, 66816), (55, 66702), (60, 66663), (62, 66645),

Gene: Grand2040\_94 Start: 67016, Stop: 66285, Start Num: 13

Candidate Starts for Grand2040\_94:

(Start: 13 @67016 has 253 MA's), (Start: 15 @66977 has 2 MA's), (16, 66950), (Start: 24 @66863 has 14 MA's), (Start: 28 @66824 has 1 MA's), (Start: 32 @66782 has 1 MA's), (40, 66656), (42, 66635), (44, 66623), (48, 66551), (55, 66437), (60, 66398), (62, 66380),

Gene: Gwennie1\_94 Start: 67105, Stop: 66374, Start Num: 13

Candidate Starts for Gwennie1\_94:

(Start: 13 @67105 has 253 MA's), (Start: 15 @67066 has 2 MA's), (16, 67039), (Start: 24 @66952 has 14 MA's), (Start: 28 @66913 has 1 MA's), (Start: 32 @66871 has 1 MA's), (40, 66745), (42, 66724), (44, 66712), (48, 66640), (55, 66526), (60, 66487), (62, 66469),

Gene: Gwilliam\_97 Start: 67824, Stop: 67093, Start Num: 13

Candidate Starts for Gwilliam\_97:

(9, 68043), (11, 67941), (Start: 13 @67824 has 253 MA's), (Start: 15 @67785 has 2 MA's), (16, 67758), (Start: 24 @67671 has 14 MA's), (Start: 28 @67632 has 1 MA's), (Start: 32 @67590 has 1 MA's), (40, 67464), (42, 67443), (44, 67431), (48, 67359), (55, 67245), (60, 67206), (62, 67188),

Gene: HSavage\_94 Start: 66365, Stop: 65787, Start Num: 24

Candidate Starts for HSavage\_94:

(Start: 24 @66365 has 14 MA's), (Start: 28 @66326 has 1 MA's), (Start: 32 @66284 has 1 MA's), (40, 66158), (42, 66137), (44, 66125), (48, 66053), (55, 65939), (60, 65900), (62, 65882),

Gene: Haimas\_94 Start: 66721, Stop: 65990, Start Num: 13

Candidate Starts for Haimas\_94:

(Start: 13 @66721 has 253 MA's), (Start: 15 @66682 has 2 MA's), (16, 66655), (Start: 24 @66568 has 14 MA's), (Start: 28 @66529 has 1 MA's), (Start: 32 @66487 has 1 MA's), (40, 66361), (42, 66340), (44, 66328), (48, 66256), (55, 66142), (60, 66103), (62, 66085),

Gene: Haleema\_96 Start: 66840, Stop: 66109, Start Num: 13

Candidate Starts for Haleema\_96:

(Start: 13 @66840 has 253 MA's), (Start: 15 @66801 has 2 MA's), (16, 66774), (Start: 24 @66687 has 14 MA's), (Start: 28 @66648 has 1 MA's), (Start: 32 @66606 has 1 MA's), (40, 66480), (42, 66459), (44, 66447), (48, 66375), (55, 66261), (60, 66222), (62, 66204),

Gene: Hamish\_94 Start: 67009, Stop: 66278, Start Num: 13

Candidate Starts for Hamish\_94:

(Start: 13 @67009 has 253 MA's), (Start: 15 @66970 has 2 MA's), (16, 66943), (Start: 24 @66856 has 14 MA's), (Start: 28 @66817 has 1 MA's), (Start: 32 @66775 has 1 MA's), (40, 66649), (42, 66628), (44, 66616), (48, 66544), (55, 66430), (60, 66391), (62, 66373),

Gene: Hartsy\_95 Start: 66958, Stop: 66227, Start Num: 13

Candidate Starts for Hartsy\_95:

(Start: 13 @66958 has 253 MA's), (Start: 15 @66919 has 2 MA's), (16, 66892), (Start: 24 @66805 has 14 MA's), (Start: 28 @66766 has 1 MA's), (Start: 32 @66724 has 1 MA's), (38, 66637), (40, 66598), (42, 66577), (44, 66565), (48, 66493), (55, 66379), (60, 66340), (62, 66322),

Gene: Harvey\_94 Start: 66617, Stop: 65886, Start Num: 13

Candidate Starts for Harvey\_94:

(Start: 13 @66617 has 253 MA's), (Start: 15 @66578 has 2 MA's), (16, 66551), (Start: 24 @66464 has 14 MA's), (Start: 28 @66425 has 1 MA's), (40, 66257), (42, 66236), (44, 66224), (48, 66152), (55, 66038), (60, 65999), (62, 65981),

Gene: Hedgerow\_84 Start: 63791, Stop: 63195, Start Num: 19

Candidate Starts for Hedgerow\_84:

(12, 63902), (Start: 19 @63791 has 17 MA's), (Start: 20 @63773 has 2 MA's), (Start: 24 @63725 has 14 MA's), (26, 63698), (29, 63671), (30, 63662), (35, 63620), (36, 63611), (40, 63515), (44, 63479), (48, 63407), (53, 63311), (54, 63305), (58, 63263), (60, 63251),

Gene: Held\_95 Start: 66738, Stop: 66007, Start Num: 13

Candidate Starts for Held\_95:

(Start: 13 @66738 has 253 MA's), (Start: 15 @66699 has 2 MA's), (16, 66672), (Start: 24 @66585 has 14 MA's), (Start: 28 @66546 has 1 MA's), (Start: 32 @66504 has 1 MA's), (40, 66378), (42, 66357), (44, 66345), (48, 66273), (55, 66159), (60, 66120), (62, 66102),

Gene: HenryJackson\_97 Start: 67458, Stop: 66727, Start Num: 13

Candidate Starts for HenryJackson\_97:

(Start: 13 @67458 has 253 MA's), (Start: 15 @67419 has 2 MA's), (16, 67392), (Start: 24 @67305 has 14 MA's), (Start: 28 @67266 has 1 MA's), (Start: 32 @67224 has 1 MA's), (40, 67098), (42, 67077), (44, 67065), (48, 66993), (55, 66879), (60, 66840), (62, 66822),

Gene: Hertubise\_96 Start: 67100, Stop: 66369, Start Num: 13

Candidate Starts for Hertubise\_96:

(Start: 13 @67100 has 253 MA's), (Start: 15 @67061 has 2 MA's), (16, 67034), (Start: 24 @66947 has 14 MA's), (Start: 28 @66908 has 1 MA's), (Start: 32 @66866 has 1 MA's), (40, 66740), (42, 66719), (44, 66707), (48, 66635), (55, 66521), (60, 66482), (62, 66464),

Gene: Hetaeria\_96 Start: 66830, Stop: 66099, Start Num: 13

Candidate Starts for Hetaeria\_96:

(Start: 13 @66830 has 253 MA's), (Start: 15 @66791 has 2 MA's), (16, 66764), (Start: 24 @66677 has 14 MA's), (Start: 28 @66638 has 1 MA's), (Start: 32 @66596 has 1 MA's), (40, 66470), (42, 66449), (44, 66437), (48, 66365), (55, 66251), (60, 66212), (62, 66194),

Gene: HighStump\_99 Start: 67245, Stop: 66514, Start Num: 13

Candidate Starts for HighStump\_99:

(Start: 13 @67245 has 253 MA's), (Start: 15 @67206 has 2 MA's), (16, 67179), (Start: 24 @67092 has 14 MA's), (Start: 28 @67053 has 1 MA's), (Start: 32 @67011 has 1 MA's), (40, 66885), (42, 66864), (44, 66852), (48, 66780), (55, 66666), (60, 66627), (62, 66609),

Gene: Hocus\_96 Start: 66759, Stop: 66028, Start Num: 13

Candidate Starts for Hocus\_96:

(Start: 13 @66759 has 253 MA's), (Start: 15 @66720 has 2 MA's), (16, 66693), (Start: 24 @66606 has 14 MA's), (Start: 28 @66567 has 1 MA's), (Start: 32 @66525 has 1 MA's), (40, 66399), (42, 66378), (44, 66366), (48, 66294), (55, 66180), (60, 66141), (62, 66123),

Gene: Holeinone\_84 Start: 63681, Stop: 63085, Start Num: 19

Candidate Starts for Holeinone\_84:

(12, 63792), (Start: 19 @63681 has 17 MA's), (Start: 20 @63663 has 2 MA's), (Start: 24 @63615 has 14 MA's), (26, 63588), (30, 63552), (35, 63510), (36, 63501), (40, 63405), (44, 63369), (48, 63297), (53, 63201), (54, 63195), (58, 63153), (60, 63141),

Gene: Horchata\_91 Start: 66558, Stop: 65962, Start Num: 15

Candidate Starts for Horchata\_91:

(9, 66816), (11, 66714), (Start: 15 @66558 has 2 MA's), (Start: 28 @66501 has 1 MA's), (Start: 32 @66459 has 1 MA's), (40, 66333), (42, 66312), (44, 66300), (55, 66114), (60, 66075), (62, 66057),

Gene: ImtiyazSitla\_98 Start: 67284, Stop: 66532, Start Num: 13

Candidate Starts for ImtiyazSitla\_98:

(9, 67503), (11, 67401), (Start: 13 @67284 has 253 MA's), (Start: 15 @67245 has 2 MA's), (Start: 24 @67131 has 14 MA's), (Start: 28 @67092 has 1 MA's), (40, 66924), (42, 66903), (44, 66891), (48, 66819), (55, 66705), (60, 66666), (62, 66648),

Gene: Imvubu\_92 Start: 66340, Stop: 65831, Start Num: 27

Candidate Starts for Imvubu\_92:

(Start: 20 @66430 has 2 MA's), (Start: 27 @66340 has 1 MA's), (34, 66280), (41, 66154), (45, 66127), (47, 66049), (55, 65932), (56, 65929), (58, 65905), (60, 65893), (62, 65875), (63, 65863),

Gene: Inchworm\_98 Start: 67132, Stop: 66401, Start Num: 13

Candidate Starts for Inchworm\_98:

(Start: 13 @67132 has 253 MA's), (Start: 15 @67093 has 2 MA's), (16, 67066), (Start: 24 @66979 has 14 MA's), (Start: 28 @66940 has 1 MA's), (Start: 32 @66898 has 1 MA's), (40, 66772), (42, 66751), (44, 66739), (48, 66667), (55, 66553), (60, 66514), (62, 66496),

Gene: Indlovu\_88 Start: 67222, Stop: 66713, Start Num: 32

Candidate Starts for Indlovu\_88:

(Start: 32 @67222 has 1 MA's), (40, 67096), (41, 67087), (42, 67075), (51, 66898), (52, 66895), (56, 66874), (60, 66838), (64, 66802), (67, 66775), (71, 66736),

Gene: Inverness\_94 Start: 66689, Stop: 65958, Start Num: 13

Candidate Starts for Inverness\_94:

(Start: 13 @66689 has 253 MA's), (Start: 15 @66650 has 2 MA's), (16, 66623), (Start: 24 @66536 has 14 MA's), (Start: 28 @66497 has 1 MA's), (Start: 32 @66455 has 1 MA's), (40, 66329), (42, 66308), (44, 66296), (48, 66224), (55, 66110), (60, 66071), (62, 66053),

Gene: Iridessa\_99 Start: 66857, Stop: 66126, Start Num: 13

Candidate Starts for Iridessa\_99:

(Start: 13 @66857 has 253 MA's), (Start: 15 @66818 has 2 MA's), (16, 66791), (Start: 24 @66704 has 14 MA's), (Start: 28 @66665 has 1 MA's), (Start: 32 @66623 has 1 MA's), (40, 66497), (42, 66476), (44, 66464), (48, 66392), (55, 66278), (60, 66239), (62, 66221),

Gene: Iridoclysis\_96 Start: 67022, Stop: 66291, Start Num: 13

Candidate Starts for Iridoclysis\_96:

(Start: 13 @67022 has 253 MA's), (Start: 15 @66983 has 2 MA's), (16, 66956), (Start: 24 @66869 has 14 MA's), (Start: 28 @66830 has 1 MA's), (Start: 32 @66788 has 1 MA's), (40, 66662), (42, 66641), (44, 66629), (48, 66557), (55, 66443), (60, 66404), (62, 66386),

Gene: IsaacEli\_99 Start: 67263, Stop: 66532, Start Num: 13

Candidate Starts for IsaacEli\_99:

(9, 67482), (11, 67380), (Start: 13 @67263 has 253 MA's), (Start: 15 @67224 has 2 MA's), (16, 67197), (Start: 24 @67110 has 14 MA's), (Start: 28 @67071 has 1 MA's), (Start: 32 @67029 has 1 MA's), (40, 66903), (42, 66882), (44, 66870), (48, 66798), (55, 66684), (60, 66645), (62, 66627),

Gene: ItsyBitsy1\_81 Start: 63908, Stop: 63312, Start Num: 19

Candidate Starts for ItsyBitsy1\_81:

(12, 64019), (Start: 19 @63908 has 17 MA's), (Start: 20 @63890 has 2 MA's), (Start: 24 @63842 has 14 MA's), (26, 63815), (30, 63779), (35, 63737), (36, 63728), (40, 63632), (44, 63596), (48, 63524), (53, 63428), (54, 63422), (58, 63380), (60, 63368),

Gene: JDog\_96 Start: 67292, Stop: 66561, Start Num: 13

Candidate Starts for JDog\_96:

(Start: 13 @67292 has 253 MA's), (Start: 15 @67253 has 2 MA's), (16, 67226), (Start: 24 @67139 has 14 MA's), (Start: 28 @67100 has 1 MA's), (Start: 32 @67058 has 1 MA's), (40, 66932), (42, 66911), (44, 66899), (48, 66827), (55, 66713), (60, 66674), (62, 66656),

Gene: JacAttac\_97 Start: 66736, Stop: 66005, Start Num: 13

Candidate Starts for JacAttac\_97:

(Start: 13 @66736 has 253 MA's), (Start: 15 @66697 has 2 MA's), (16, 66670), (Start: 24 @66583 has 14 MA's), (Start: 28 @66544 has 1 MA's), (Start: 32 @66502 has 1 MA's), (40, 66376), (42, 66355), (44, 66343), (48, 66271), (55, 66157), (60, 66118), (62, 66100),

Gene: JakeO\_98 Start: 67020, Stop: 66289, Start Num: 13

Candidate Starts for JakeO\_98:

(Start: 13 @67020 has 253 MA's), (Start: 15 @66981 has 2 MA's), (16, 66954), (Start: 24 @66867 has 14 MA's), (Start: 28 @66828 has 1 MA's), (Start: 32 @66786 has 1 MA's), (40, 66660), (42, 66639), (44, 66627), (48, 66555), (55, 66441), (60, 66402), (62, 66384),

Gene: JangoPhett\_95 Start: 67098, Stop: 66367, Start Num: 13

Candidate Starts for JangoPhett\_95:

(Start: 13 @67098 has 253 MA's), (Start: 15 @67059 has 2 MA's), (16, 67032), (Start: 24 @66945 has 14 MA's), (Start: 28 @66906 has 1 MA's), (Start: 32 @66864 has 1 MA's), (40, 66738), (42, 66717), (44, 66705), (48, 66633), (55, 66519), (60, 66480), (62, 66462),

Gene: Jesabah\_97 Start: 67861, Stop: 67130, Start Num: 13

Candidate Starts for Jesabah\_97:

(Start: 13 @67861 has 253 MA's), (Start: 15 @67822 has 2 MA's), (16, 67795), (Start: 24 @67708 has 14 MA's), (Start: 28 @67669 has 1 MA's), (Start: 32 @67627 has 1 MA's), (40, 67501), (42, 67480), (44, 67468), (48, 67396), (55, 67282), (60, 67243), (62, 67225),

Gene: Jillium\_97 Start: 67175, Stop: 66444, Start Num: 13

Candidate Starts for Jillium\_97:

(Start: 13 @67175 has 253 MA's), (Start: 15 @67136 has 2 MA's), (16, 67109), (Start: 24 @67022 has 14 MA's), (Start: 28 @66983 has 1 MA's), (Start: 32 @66941 has 1 MA's), (40, 66815), (42, 66794), (44, 66782), (48, 66710), (55, 66596), (60, 66557), (62, 66539),

Gene: Jiminy\_97 Start: 66956, Stop: 66225, Start Num: 13

Candidate Starts for Jiminy\_97:

(Start: 13 @66956 has 253 MA's), (Start: 15 @66917 has 2 MA's), (16, 66890), (Start: 24 @66803 has 14 MA's), (Start: 28 @66764 has 1 MA's), (Start: 32 @66722 has 1 MA's), (40, 66596), (42, 66575), (44, 66563), (48, 66491), (55, 66377), (60, 66338), (62, 66320),

Gene: Jiraiya\_102 Start: 67040, Stop: 66309, Start Num: 13

Candidate Starts for Jiraiya\_102:

(Start: 13 @67040 has 253 MA's), (Start: 15 @67001 has 2 MA's), (16, 66974), (Start: 24 @66887 has 14 MA's), (Start: 28 @66848 has 1 MA's), (Start: 32 @66806 has 1 MA's), (40, 66680), (42, 66659), (44, 66647), (48, 66575), (55, 66461), (60, 66422), (62, 66404),

Gene: Jolie1\_089 Start: 66284, Stop: 65610, Start Num: 25

Candidate Starts for Jolie1\_089:

(14, 66428), (Start: 25 @66284 has 1 MA's), (31, 66203), (33, 66194), (40, 66074), (43, 66044), (48, 65972), (50, 65960), (59, 65819), (60, 65816), (62, 65798), (65, 65771), (67, 65747), (69, 65732),

Gene: KLucky39\_94 Start: 66560, Stop: 65829, Start Num: 13

Candidate Starts for KLucky39\_94:

(Start: 13 @66560 has 253 MA's), (Start: 15 @66521 has 2 MA's), (16, 66494), (Start: 24 @66407 has 14 MA's), (Start: 28 @66368 has 1 MA's), (Start: 32 @66326 has 1 MA's), (40, 66200), (42, 66179), (44, 66167), (48, 66095), (55, 65981), (60, 65942), (62, 65924),

Gene: Kahve\_97 Start: 67456, Stop: 66725, Start Num: 13

Candidate Starts for Kahve\_97:

(Start: 13 @67456 has 253 MA's), (Start: 15 @67417 has 2 MA's), (16, 67390), (Start: 24 @67303 has 14 MA's), (Start: 28 @67264 has 1 MA's), (Start: 32 @67222 has 1 MA's), (40, 67096), (42, 67075), (44, 67063), (48, 66991), (55, 66877), (60, 66838), (62, 66820),

Gene: Kailash\_95 Start: 67155, Stop: 66424, Start Num: 13

Candidate Starts for Kailash\_95:

(9, 67374), (11, 67272), (Start: 13 @67155 has 253 MA's), (Start: 15 @67116 has 2 MA's), (Start: 24 @67002 has 14 MA's), (Start: 28 @66963 has 1 MA's), (40, 66795), (42, 66774), (44, 66762), (48, 66690), (55, 66576), (60, 66537), (62, 66519),

Gene: Kaleb\_84 Start: 63771, Stop: 63241, Start Num: 24

Candidate Starts for Kaleb\_84:

(12, 63948), (Start: 19 @63837 has 17 MA's), (Start: 20 @63819 has 2 MA's), (Start: 24 @63771 has 14 MA's), (26, 63744), (30, 63708), (35, 63666), (36, 63657), (40, 63561), (44, 63525), (48, 63453), (53, 63357), (54, 63351), (58, 63309), (60, 63297),

Gene: Katniss\_99 Start: 66872, Stop: 66141, Start Num: 13

Candidate Starts for Katniss\_99:

(Start: 13 @66872 has 253 MA's), (Start: 15 @66833 has 2 MA's), (16, 66806), (Start: 24 @66719 has 14 MA's), (Start: 28 @66680 has 1 MA's), (Start: 32 @66638 has 1 MA's), (40, 66512), (42, 66491), (44, 66479), (48, 66407), (55, 66293), (60, 66254), (62, 66236),

Gene: KayaCho\_87 Start: 66154, Stop: 65498, Start Num: 25

Candidate Starts for KayaCho\_87:

(Start: 25 @66154 has 1 MA's), (31, 66085), (39, 65983), (40, 65956), (43, 65926), (48, 65851), (50, 65839), (52, 65755), (59, 65698), (60, 65695), (62, 65677), (65, 65650), (67, 65623),

Gene: Keitherie\_100 Start: 67514, Stop: 66783, Start Num: 13

Candidate Starts for Keitherie\_100:

(Start: 13 @67514 has 253 MA's), (Start: 15 @67475 has 2 MA's), (16, 67448), (Start: 24 @67361 has 14 MA's), (Start: 28 @67322 has 1 MA's), (Start: 32 @67280 has 1 MA's), (40, 67154), (42, 67133), (44, 67121), (48, 67049), (55, 66935), (60, 66896), (62, 66878),

Gene: Khan1\_97 Start: 67235, Stop: 66504, Start Num: 13

Candidate Starts for Khan1\_97:

(Start: 13 @67235 has 253 MA's), (Start: 15 @67196 has 2 MA's), (16, 67169), (Start: 28 @67043 has 1 MA's), (Start: 32 @67001 has 1 MA's), (40, 66875), (42, 66854), (44, 66842), (48, 66770), (55, 66656), (60, 66617), (62, 66599),

Gene: Kheth\_84 Start: 63754, Stop: 63146, Start Num: 17

Candidate Starts for Kheth\_84:

(1, 65020), (3, 64510), (4, 64258), (6, 64078), (10, 63949), (Start: 17 @63754 has 1 MA's), (Start: 24 @63676 has 14 MA's), (26, 63649), (29, 63622), (30, 63613), (35, 63571), (36, 63562), (40, 63466), (44, 63430), (48, 63358), (53, 63262), (54, 63256), (58, 63214), (60, 63202),

Gene: Kikipoo\_99 Start: 67263, Stop: 66532, Start Num: 13

Candidate Starts for Kikipoo\_99:

(9, 67482), (11, 67380), (Start: 13 @67263 has 253 MA's), (Start: 15 @67224 has 2 MA's), (16, 67197), (Start: 24 @67110 has 14 MA's), (Start: 28 @67071 has 1 MA's), (Start: 32 @67029 has 1 MA's), (40, 66903), (42, 66882), (44, 66870), (48, 66798), (55, 66684), (60, 66645), (62, 66627),

Gene: Kimbrough\_98 Start: 67335, Stop: 66604, Start Num: 13

Candidate Starts for Kimbrough\_98:

(Start: 13 @67335 has 253 MA's), (Start: 15 @67296 has 2 MA's), (16, 67269), (Start: 24 @67182 has 14 MA's), (Start: 28 @67143 has 1 MA's), (Start: 32 @67101 has 1 MA's), (40, 66975), (42, 66954), (44, 66942), (48, 66870), (55, 66756), (60, 66717), (62, 66699),

Gene: KingTut\_87 Start: 63252, Stop: 62521, Start Num: 13

Candidate Starts for KingTut\_87:

(Start: 13 @63252 has 253 MA's), (Start: 15 @63213 has 2 MA's), (16, 63186), (Start: 24 @63099 has 14 MA's), (Start: 28 @63060 has 1 MA's), (Start: 32 @63018 has 1 MA's), (40, 62892), (42, 62871), (44, 62859), (48, 62787), (55, 62673), (60, 62634), (62, 62616),

Gene: KingVeVeVe\_95 Start: 66468, Stop: 65737, Start Num: 13

Candidate Starts for KingVeVeVe\_95:



(9, 66687), (11, 66585), (Start: 13 @66468 has 253 MA's), (Start: 15 @66429 has 2 MA's), (16, 66402), (Start: 28 @66276 has 1 MA's), (Start: 32 @66234 has 1 MA's), (40, 66108), (42, 66087), (44, 66075), (55, 65889), (60, 65850), (62, 65832),

Gene: KlimbOn\_96 Start: 66775, Stop: 66044, Start Num: 13

Candidate Starts for KlimbOn\_96:

(Start: 13 @66775 has 253 MA's), (Start: 15 @66736 has 2 MA's), (16, 66709), (Start: 24 @66622 has 14 MA's), (Start: 28 @66583 has 1 MA's), (Start: 32 @66541 has 1 MA's), (40, 66415), (42, 66394), (44, 66382), (48, 66310), (55, 66196), (60, 66157), (62, 66139),

Gene: Kloppinator\_97 Start: 66905, Stop: 66174, Start Num: 13

Candidate Starts for Kloppinator\_97:

(Start: 13 @66905 has 253 MA's), (Start: 15 @66866 has 2 MA's), (16, 66839), (Start: 24 @66752 has 14 MA's), (Start: 28 @66713 has 1 MA's), (40, 66545), (42, 66524), (44, 66512), (48, 66440), (55, 66326), (60, 66287), (62, 66269),

Gene: Kolhan\_85 Start: 63664, Stop: 63134, Start Num: 24

Candidate Starts for Kolhan\_85:

(12, 63841), (Start: 19 @63730 has 17 MA's), (Start: 20 @63712 has 2 MA's), (Start: 24 @63664 has 14 MA's), (26, 63637), (29, 63610), (30, 63601), (35, 63559), (36, 63550), (40, 63454), (44, 63418), (48, 63346), (53, 63250), (54, 63244), (58, 63202), (60, 63190),

Gene: Kwadwo\_96 Start: 66759, Stop: 66028, Start Num: 13

Candidate Starts for Kwadwo\_96:

(Start: 13 @66759 has 253 MA's), (Start: 15 @66720 has 2 MA's), (16, 66693), (Start: 24 @66606 has 14 MA's), (Start: 28 @66567 has 1 MA's), (Start: 32 @66525 has 1 MA's), (40, 66399), (42, 66378), (44, 66366), (48, 66294), (55, 66180), (60, 66141), (62, 66123),

Gene: Kwksand96\_98 Start: 67025, Stop: 66294, Start Num: 13

Candidate Starts for Kwksand96\_98:

(Start: 13 @67025 has 253 MA's), (Start: 15 @66986 has 2 MA's), (16, 66959), (Start: 28 @66833 has 1 MA's), (Start: 32 @66791 has 1 MA's), (40, 66665), (42, 66644), (44, 66632), (48, 66560), (55, 66446), (60, 66407), (62, 66389),

Gene: Labeouficaum\_97 Start: 66839, Stop: 66108, Start Num: 13

Candidate Starts for Labeouficaum\_97:

(9, 67058), (11, 66956), (Start: 13 @66839 has 253 MA's), (Start: 15 @66800 has 2 MA's), (Start: 24 @66686 has 14 MA's), (Start: 28 @66647 has 1 MA's), (40, 66479), (42, 66458), (44, 66446), (48, 66374), (55, 66260), (60, 66221), (62, 66203),

Gene: Lars\_85 Start: 63740, Stop: 63210, Start Num: 24

Candidate Starts for Lars\_85:

(3, 64574), (4, 64322), (6, 64142), (10, 64013), (Start: 17 @63818 has 1 MA's), (Start: 24 @63740 has 14 MA's), (26, 63713), (29, 63686), (30, 63677), (35, 63635), (36, 63626), (40, 63530), (44, 63494), (48, 63422), (53, 63326), (54, 63320), (58, 63278), (60, 63266),

Gene: LasagnaCat\_98 Start: 67141, Stop: 66410, Start Num: 13

Candidate Starts for LasagnaCat\_98:

(Start: 13 @67141 has 253 MA's), (Start: 15 @67102 has 2 MA's), (16, 67075), (Start: 24 @66988 has 14 MA's), (Start: 28 @66949 has 1 MA's), (Start: 32 @66907 has 1 MA's), (40, 66781), (42, 66760), (44, 66748), (48, 66676), (55, 66562), (60, 66523), (62, 66505),

Gene: Lasso\_96 Start: 67001, Stop: 66270, Start Num: 13

Candidate Starts for Lasso\_96:

(Start: 13 @67001 has 253 MA's), (Start: 15 @66962 has 2 MA's), (16, 66935), (Start: 24 @66848 has 14 MA's), (Start: 28 @66809 has 1 MA's), (Start: 32 @66767 has 1 MA's), (40, 66641), (42, 66620), (44, 66608), (48, 66536), (55, 66422), (60, 66383), (62, 66365),

Gene: Laurie\_83 Start: 63078, Stop: 62548, Start Num: 24

Candidate Starts for Laurie\_83:

(3, 63918), (4, 63666), (6, 63486), (10, 63357), (Start: 17 @63162 has 1 MA's), (Start: 24 @63078 has 14 MA's), (26, 63051), (29, 63024), (30, 63015), (35, 62973), (36, 62964), (40, 62868), (44, 62832), (48, 62760), (53, 62664), (54, 62658), (58, 62616), (60, 62604),

Gene: LeeLot\_95 Start: 67346, Stop: 66615, Start Num: 13

Candidate Starts for LeeLot\_95:

(Start: 13 @67346 has 253 MA's), (Start: 15 @67307 has 2 MA's), (16, 67280), (Start: 24 @67193 has 14 MA's), (Start: 28 @67154 has 1 MA's), (Start: 32 @67112 has 1 MA's), (40, 66986), (42, 66965), (44, 66953), (48, 66881), (55, 66767), (60, 66728), (62, 66710),

Gene: Lego3393\_95 Start: 67462, Stop: 66731, Start Num: 13

Candidate Starts for Lego3393\_95:

(Start: 13 @67462 has 253 MA's), (Start: 15 @67423 has 2 MA's), (16, 67396), (Start: 24 @67309 has 14 MA's), (Start: 28 @67270 has 1 MA's), (Start: 32 @67228 has 1 MA's), (40, 67102), (42, 67081), (44, 67069), (48, 66997), (55, 66883), (60, 66844), (62, 66826),

Gene: Legolas\_98 Start: 67089, Stop: 66358, Start Num: 13

Candidate Starts for Legolas\_98:

(Start: 13 @67089 has 253 MA's), (Start: 15 @67050 has 2 MA's), (16, 67023), (Start: 24 @66936 has 14 MA's), (Start: 28 @66897 has 1 MA's), (Start: 32 @66855 has 1 MA's), (40, 66729), (42, 66708), (44, 66696), (48, 66624), (55, 66510), (60, 66471), (62, 66453),

Gene: LeiMonet\_99 Start: 67222, Stop: 66491, Start Num: 13

Candidate Starts for LeiMonet\_99:

(Start: 13 @67222 has 253 MA's), (Start: 15 @67183 has 2 MA's), (16, 67156), (Start: 24 @67069 has 14 MA's), (Start: 28 @67030 has 1 MA's), (Start: 32 @66988 has 1 MA's), (40, 66862), (42, 66841), (44, 66829), (48, 66757), (55, 66643), (60, 66604), (62, 66586),

Gene: LemonSlice\_97 Start: 66748, Stop: 66017, Start Num: 13

Candidate Starts for LemonSlice\_97:

(Start: 13 @66748 has 253 MA's), (Start: 15 @66709 has 2 MA's), (16, 66682), (Start: 24 @66595 has 14 MA's), (Start: 28 @66556 has 1 MA's), (Start: 32 @66514 has 1 MA's), (40, 66388), (42, 66367), (44, 66355), (48, 66283), (55, 66169), (60, 66130), (62, 66112),

Gene: Lephleur\_84 Start: 63596, Stop: 63066, Start Num: 24

Candidate Starts for Lephleur\_84:

(12, 63773), (Start: 19 @63662 has 17 MA's), (Start: 20 @63644 has 2 MA's), (Start: 24 @63596 has 14 MA's), (26, 63569), (30, 63533), (35, 63491), (36, 63482), (40, 63386), (44, 63350), (48, 63278), (53, 63182), (54, 63176), (58, 63134), (60, 63122),

Gene: LilSmirk\_84 Start: 63683, Stop: 63105, Start Num: 20

Candidate Starts for LilSmirk\_84:

(12, 63812), (Start: 19 @63701 has 17 MA's), (Start: 20 @63683 has 2 MA's), (Start: 24 @63635 has 14 MA's), (26, 63608), (29, 63581), (30, 63572), (35, 63530), (36, 63521), (40, 63425), (44, 63389), (48, 63317), (53, 63221), (54, 63215), (58, 63173), (60, 63161),

Gene: LizLemon\_84 Start: 63833, Stop: 63237, Start Num: 19

Candidate Starts for LizLemon\_84:

(12, 63944), (Start: 19 @63833 has 17 MA's), (Start: 20 @63815 has 2 MA's), (Start: 24 @63767 has 14 MA's), (26, 63740), (29, 63713), (30, 63704), (35, 63662), (36, 63653), (40, 63557), (44, 63521), (48, 63449), (53, 63353), (54, 63347), (58, 63305), (60, 63293),

Gene: Longacauda\_97 Start: 66983, Stop: 66231, Start Num: 13

Candidate Starts for Longacauda\_97:

(Start: 13 @66983 has 253 MA's), (Start: 15 @66944 has 2 MA's), (16, 66917), (Start: 24 @66830 has 14 MA's), (Start: 28 @66791 has 1 MA's), (Start: 32 @66749 has 1 MA's), (40, 66623), (42, 66602), (44, 66590), (48, 66518), (55, 66404), (60, 66365), (62, 66347),

Gene: Lopsy\_93 Start: 66654, Stop: 65923, Start Num: 13

Candidate Starts for Lopsy\_93:

(Start: 13 @66654 has 253 MA's), (Start: 15 @66615 has 2 MA's), (16, 66588), (Start: 24 @66501 has 14 MA's), (Start: 28 @66462 has 1 MA's), (Start: 32 @66420 has 1 MA's), (40, 66294), (42, 66273), (44, 66261), (55, 66075), (60, 66036), (62, 66018),

Gene: LostAndPhound\_96 Start: 67290, Stop: 66559, Start Num: 13

Candidate Starts for LostAndPhound\_96:

(Start: 13 @67290 has 253 MA's), (Start: 15 @67251 has 2 MA's), (16, 67224), (Start: 24 @67137 has 14 MA's), (Start: 28 @67098 has 1 MA's), (Start: 32 @67056 has 1 MA's), (40, 66930), (42, 66909), (44, 66897), (48, 66825), (55, 66711), (60, 66672), (62, 66654),

Gene: LuckyMarjie\_94 Start: 66500, Stop: 65769, Start Num: 13

Candidate Starts for LuckyMarjie\_94:

(Start: 13 @66500 has 253 MA's), (Start: 15 @66461 has 2 MA's), (16, 66434), (Start: 24 @66347 has 14 MA's), (Start: 28 @66308 has 1 MA's), (Start: 32 @66266 has 1 MA's), (40, 66140), (42, 66119), (44, 66107), (48, 66035), (55, 65921), (60, 65882), (62, 65864),

Gene: Lulumae\_92 Start: 66481, Stop: 65750, Start Num: 13

Candidate Starts for Lulumae\_92:

(Start: 13 @66481 has 253 MA's), (Start: 15 @66442 has 2 MA's), (16, 66415), (Start: 28 @66289 has 1 MA's), (Start: 32 @66247 has 1 MA's), (40, 66121), (42, 66100), (44, 66088), (48, 66016), (55, 65902), (60, 65863), (62, 65845),

Gene: Lulwa\_94 Start: 66114, Stop: 65383, Start Num: 13

Candidate Starts for Lulwa\_94:

(Start: 13 @66114 has 253 MA's), (Start: 15 @66075 has 2 MA's), (16, 66048), (Start: 24 @65961 has 14 MA's), (Start: 28 @65922 has 1 MA's), (Start: 32 @65880 has 1 MA's), (40, 65754), (42, 65733), (44, 65721), (48, 65649), (55, 65535), (60, 65496), (62, 65478),

Gene: Lumine\_98 Start: 66938, Stop: 66207, Start Num: 13

Candidate Starts for Lumine\_98:

(Start: 13 @66938 has 253 MA's), (Start: 15 @66899 has 2 MA's), (16, 66872), (Start: 24 @66785 has 14 MA's), (Start: 28 @66746 has 1 MA's), (Start: 32 @66704 has 1 MA's), (40, 66578), (42, 66557), (44, 66545), (48, 66473), (55, 66359), (60, 66320), (62, 66302),

Gene: MRabcd\_97 Start: 67216, Stop: 66485, Start Num: 13

Candidate Starts for MRabcd\_97:

(Start: 13 @67216 has 253 MA's), (Start: 15 @67177 has 2 MA's), (16, 67150), (Start: 24 @67063 has 14 MA's), (Start: 28 @67024 has 1 MA's), (Start: 32 @66982 has 1 MA's), (40, 66856), (42, 66835), (44, 66823), (48, 66751), (55, 66637), (60, 66598), (62, 66580),

Gene: Mag7\_95 Start: 66699, Stop: 65968, Start Num: 13

Candidate Starts for Mag7\_95:

(9, 66918), (11, 66816), (Start: 13 @66699 has 253 MA's), (Start: 15 @66660 has 2 MA's), (Start: 24 @66546 has 14 MA's), (Start: 28 @66507 has 1 MA's), (40, 66339), (42, 66318), (44, 66306), (48, 66234), (55, 66120), (60, 66081), (62, 66063),

Gene: Magic8\_96 Start: 67067, Stop: 66336, Start Num: 13

Candidate Starts for Magic8\_96:

(9, 67286), (11, 67184), (Start: 13 @67067 has 253 MA's), (Start: 15 @67028 has 2 MA's), (Start: 24 @66914 has 14 MA's), (Start: 28 @66875 has 1 MA's), (40, 66707), (42, 66686), (44, 66674), (48, 66602), (55, 66488), (60, 66449), (62, 66431),

Gene: Mana\_94 Start: 66904, Stop: 66173, Start Num: 13

Candidate Starts for Mana\_94:

(Start: 13 @66904 has 253 MA's), (Start: 15 @66865 has 2 MA's), (16, 66838), (Start: 24 @66751 has 14 MA's), (Start: 28 @66712 has 1 MA's), (Start: 32 @66670 has 1 MA's), (40, 66544), (42, 66523), (44, 66511), (48, 66439), (55, 66325), (60, 66286), (62, 66268),

Gene: Manad\_96 Start: 67013, Stop: 66282, Start Num: 13

Candidate Starts for Manad\_96:

(Start: 13 @67013 has 253 MA's), (Start: 15 @66974 has 2 MA's), (16, 66947), (Start: 24 @66860 has 14 MA's), (Start: 28 @66821 has 1 MA's), (Start: 32 @66779 has 1 MA's), (40, 66653), (42, 66632), (44, 66620), (48, 66548), (55, 66434), (60, 66395), (62, 66377),

Gene: Maru\_96 Start: 67109, Stop: 66378, Start Num: 13

Candidate Starts for Maru\_96:

(Start: 13 @67109 has 253 MA's), (Start: 15 @67070 has 2 MA's), (16, 67043), (Start: 24 @66956 has 14 MA's), (Start: 28 @66917 has 1 MA's), (Start: 32 @66875 has 1 MA's), (40, 66749), (42, 66728), (44, 66716), (48, 66644), (55, 66530), (60, 66491), (62, 66473),

Gene: Maskar\_98 Start: 67284, Stop: 66532, Start Num: 13

Candidate Starts for Maskar\_98:

(9, 67503), (11, 67401), (Start: 13 @67284 has 253 MA's), (Start: 15 @67245 has 2 MA's), (Start: 24 @67131 has 14 MA's), (Start: 28 @67092 has 1 MA's), (40, 66924), (42, 66903), (44, 66891), (48, 66819), (55, 66705), (60, 66666), (62, 66648),

Gene: MasterPo\_85 Start: 63636, Stop: 63106, Start Num: 24

Candidate Starts for MasterPo\_85:

(12, 63813), (Start: 19 @63702 has 17 MA's), (Start: 20 @63684 has 2 MA's), (Start: 24 @63636 has 14 MA's), (26, 63609), (29, 63582), (30, 63573), (35, 63531), (36, 63522), (37, 63516), (40, 63426), (44, 63390), (48, 63318), (53, 63222), (54, 63216), (58, 63174), (60, 63162),

Gene: Matalotodo\_95 Start: 67748, Stop: 67017, Start Num: 13

Candidate Starts for Matalotodo\_95:

(Start: 13 @67748 has 253 MA's), (Start: 15 @67709 has 2 MA's), (16, 67682), (Start: 24 @67595 has 14 MA's), (Start: 28 @67556 has 1 MA's), (Start: 32 @67514 has 1 MA's), (40, 67388), (42, 67367), (44, 67355), (48, 67283), (55, 67169), (60, 67130), (62, 67112),

Gene: Mcshane\_99 Start: 67131, Stop: 66400, Start Num: 13

Candidate Starts for Mcshane\_99:

(Start: 13 @67131 has 253 MA's), (Start: 15 @67092 has 2 MA's), (16, 67065), (Start: 24 @66978 has 14 MA's), (Start: 28 @66939 has 1 MA's), (Start: 32 @66897 has 1 MA's), (40, 66771), (42, 66750),

(44, 66738), (48, 66666), (55, 66552), (60, 66513), (62, 66495),

Gene: Mecca\_97 Start: 67315, Stop: 66584, Start Num: 13

Candidate Starts for Mecca\_97:

(Start: 13 @67315 has 253 MA's), (Start: 15 @67276 has 2 MA's), (16, 67249), (Start: 24 @67162 has 14 MA's), (Start: 28 @67123 has 1 MA's), (Start: 32 @67081 has 1 MA's), (40, 66955), (42, 66934), (44, 66922), (48, 66850), (55, 66736), (60, 66697), (62, 66679),

Gene: Megamind20\_99 Start: 67095, Stop: 66364, Start Num: 13

Candidate Starts for Megamind20\_99:

(Start: 13 @67095 has 253 MA's), (Start: 15 @67056 has 2 MA's), (16, 67029), (Start: 28 @66903 has 1 MA's), (Start: 32 @66861 has 1 MA's), (40, 66735), (42, 66714), (44, 66702), (48, 66630), (55, 66516), (60, 66477), (62, 66459),

Gene: Megatron\_98 Start: 67434, Stop: 66703, Start Num: 13

Candidate Starts for Megatron\_98:

(Start: 13 @67434 has 253 MA's), (Start: 15 @67395 has 2 MA's), (16, 67368), (Start: 24 @67281 has 14 MA's), (Start: 28 @67242 has 1 MA's), (Start: 32 @67200 has 1 MA's), (40, 67074), (42, 67053), (44, 67041), (48, 66969), (55, 66855), (60, 66816), (62, 66798),

Gene: Melc17\_94 Start: 67384, Stop: 66653, Start Num: 13

Candidate Starts for Melc17\_94:

(Start: 13 @67384 has 253 MA's), (Start: 15 @67345 has 2 MA's), (16, 67318), (Start: 24 @67231 has 14 MA's), (Start: 28 @67192 has 1 MA's), (Start: 32 @67150 has 1 MA's), (40, 67024), (42, 67003), (44, 66991), (48, 66919), (55, 66805), (60, 66766), (62, 66748),

Gene: MelsMeow\_95 Start: 66765, Stop: 66013, Start Num: 13

Candidate Starts for MelsMeow\_95:

(9, 66984), (11, 66882), (Start: 13 @66765 has 253 MA's), (Start: 15 @66726 has 2 MA's), (Start: 24 @66612 has 14 MA's), (Start: 28 @66573 has 1 MA's), (40, 66405), (42, 66384), (44, 66372), (48, 66300), (55, 66186), (60, 66147), (62, 66129),

Gene: Mesh1\_97 Start: 67199, Stop: 66468, Start Num: 13

Candidate Starts for Mesh1\_97:

(Start: 13 @67199 has 253 MA's), (Start: 15 @67160 has 2 MA's), (16, 67133), (Start: 24 @67046 has 14 MA's), (Start: 28 @67007 has 1 MA's), (Start: 32 @66965 has 1 MA's), (40, 66839), (42, 66818), (44, 66806), (48, 66734), (55, 66620), (60, 66581), (62, 66563),

Gene: Mesmerelda\_98 Start: 67315, Stop: 66584, Start Num: 13

Candidate Starts for Mesmerelda\_98:

(Start: 13 @67315 has 253 MA's), (Start: 15 @67276 has 2 MA's), (16, 67249), (Start: 24 @67162 has 14 MA's), (Start: 28 @67123 has 1 MA's), (Start: 32 @67081 has 1 MA's), (40, 66955), (42, 66934), (44, 66922), (48, 66850), (55, 66736), (60, 66697), (62, 66679),

Gene: MichaelPhcott\_95 Start: 66696, Stop: 65965, Start Num: 13

Candidate Starts for MichaelPhcott\_95:

(9, 66915), (11, 66813), (Start: 13 @66696 has 253 MA's), (Start: 15 @66657 has 2 MA's), (Start: 24 @66543 has 14 MA's), (Start: 28 @66504 has 1 MA's), (40, 66336), (42, 66315), (44, 66303), (48, 66231), (55, 66117), (60, 66078), (62, 66060),

Gene: Mikota\_91 Start: 66191, Stop: 65460, Start Num: 13

Candidate Starts for Mikota\_91:

(Start: 13 @66191 has 253 MA's), (Start: 15 @66152 has 2 MA's), (16, 66125), (Start: 24 @66038 has 14 MA's), (Start: 28 @65999 has 1 MA's), (40, 65831), (42, 65810), (44, 65798), (48, 65726), (55, 65612), (60, 65573), (62, 65555),

Gene: MiniBoss\_92 Start: 65812, Stop: 65081, Start Num: 13

Candidate Starts for MiniBoss\_92:

(9, 66031), (11, 65929), (Start: 13 @65812 has 253 MA's), (Start: 15 @65773 has 2 MA's), (16, 65746), (21, 65710), (Start: 24 @65659 has 14 MA's), (Start: 28 @65620 has 1 MA's), (Start: 32 @65578 has 1 MA's), (40, 65452), (42, 65431), (44, 65419), (55, 65233), (60, 65194), (62, 65176),

Gene: MitKao\_97 Start: 66917, Stop: 66186, Start Num: 13

Candidate Starts for MitKao\_97:

(Start: 13 @66917 has 253 MA's), (Start: 15 @66878 has 2 MA's), (16, 66851), (Start: 24 @66764 has 14 MA's), (Start: 28 @66725 has 1 MA's), (Start: 32 @66683 has 1 MA's), (40, 66557), (42, 66536), (44, 66524), (48, 66452), (55, 66338), (60, 66299), (62, 66281),

Gene: Morgushi\_94 Start: 66732, Stop: 66001, Start Num: 13

Candidate Starts for Morgushi\_94:

(Start: 13 @66732 has 253 MA's), (Start: 15 @66693 has 2 MA's), (16, 66666), (Start: 24 @66579 has 14 MA's), (Start: 28 @66540 has 1 MA's), (Start: 32 @66498 has 1 MA's), (40, 66372), (42, 66351), (44, 66339), (48, 66267), (55, 66153), (60, 66114), (62, 66096),

Gene: Morty\_97 Start: 67302, Stop: 66571, Start Num: 13

Candidate Starts for Morty\_97:

(Start: 13 @67302 has 253 MA's), (Start: 15 @67263 has 2 MA's), (16, 67236), (Start: 24 @67149 has 14 MA's), (Start: 28 @67110 has 1 MA's), (Start: 32 @67068 has 1 MA's), (40, 66942), (42, 66921), (44, 66909), (48, 66837), (55, 66723), (60, 66684), (62, 66666),

Gene: Mosaic\_94 Start: 66913, Stop: 66182, Start Num: 13

Candidate Starts for Mosaic\_94:

(Start: 13 @66913 has 253 MA's), (Start: 15 @66874 has 2 MA's), (16, 66847), (Start: 24 @66760 has 14 MA's), (Start: 28 @66721 has 1 MA's), (Start: 32 @66679 has 1 MA's), (40, 66553), (42, 66532), (44, 66520), (48, 66448), (55, 66334), (60, 66295), (62, 66277),

Gene: MrPhizzler\_96 Start: 67212, Stop: 66481, Start Num: 13

Candidate Starts for MrPhizzler\_96:

(Start: 13 @67212 has 253 MA's), (Start: 15 @67173 has 2 MA's), (16, 67146), (Start: 28 @67020 has 1 MA's), (Start: 32 @66978 has 1 MA's), (40, 66852), (42, 66831), (44, 66819), (48, 66747), (55, 66633), (60, 66594), (62, 66576),

Gene: Mulan\_96 Start: 66946, Stop: 66215, Start Num: 13

Candidate Starts for Mulan\_96:

(Start: 13 @66946 has 253 MA's), (Start: 15 @66907 has 2 MA's), (16, 66880), (Start: 24 @66793 has 14 MA's), (Start: 28 @66754 has 1 MA's), (Start: 32 @66712 has 1 MA's), (40, 66586), (42, 66565), (44, 66553), (48, 66481), (55, 66367), (60, 66328), (62, 66310),

Gene: Murdoc\_93 Start: 67025, Stop: 66294, Start Num: 13

Candidate Starts for Murdoc\_93:

(Start: 13 @67025 has 253 MA's), (Start: 15 @66986 has 2 MA's), (16, 66959), (Start: 24 @66872 has 14 MA's), (Start: 28 @66833 has 1 MA's), (Start: 32 @66791 has 1 MA's), (40, 66665), (42, 66644), (44, 66632), (48, 66560), (55, 66446), (60, 66407), (62, 66389),

Gene: Mutante\_98 Start: 66919, Stop: 66188, Start Num: 13

Candidate Starts for Mutante\_98:

(Start: 13 @66919 has 253 MA's), (Start: 15 @66880 has 2 MA's), (16, 66853), (Start: 24 @66766 has 14 MA's), (Start: 28 @66727 has 1 MA's), (Start: 32 @66685 has 1 MA's), (40, 66559), (42, 66538), (44, 66526), (48, 66454), (55, 66340), (60, 66301), (62, 66283),

Gene: Nacho\_0099 Start: 67746, Stop: 67015, Start Num: 13

Candidate Starts for Nacho\_0099:

(Start: 13 @67746 has 253 MA's), (Start: 15 @67707 has 2 MA's), (16, 67680), (Start: 24 @67593 has 14 MA's), (Start: 28 @67554 has 1 MA's), (Start: 32 @67512 has 1 MA's), (40, 67386), (42, 67365), (44, 67353), (48, 67281), (55, 67167), (60, 67128), (62, 67110),

Gene: Nangang\_90 Start: 66354, Stop: 65737, Start Num: 28

Candidate Starts for Nangang\_90:

(7, 66789), (18, 66459), (Start: 28 @66354 has 1 MA's), (40, 66186), (41, 66177), (50, 66069), (57, 65952), (60, 65928), (62, 65910), (70, 65817),

Gene: Nathan\_96 Start: 67167, Stop: 66436, Start Num: 13

Candidate Starts for Nathan\_96:

(Start: 13 @67167 has 253 MA's), (Start: 15 @67128 has 2 MA's), (16, 67101), (Start: 24 @67014 has 14 MA's), (Start: 28 @66975 has 1 MA's), (Start: 32 @66933 has 1 MA's), (40, 66807), (42, 66786), (44, 66774), (48, 66702), (55, 66588), (60, 66549), (62, 66531),

Gene: Newman\_92 Start: 67023, Stop: 66292, Start Num: 13

Candidate Starts for Newman\_92:

(Start: 13 @67023 has 253 MA's), (Start: 15 @66984 has 2 MA's), (16, 66957), (Start: 24 @66870 has 14 MA's), (Start: 28 @66831 has 1 MA's), (Start: 32 @66789 has 1 MA's), (40, 66663), (42, 66642), (44, 66630), (48, 66558), (55, 66444), (60, 66405), (62, 66387),

Gene: Nicole21\_98 Start: 67053, Stop: 66322, Start Num: 13

Candidate Starts for Nicole21\_98:

(Start: 13 @67053 has 253 MA's), (Start: 15 @67014 has 2 MA's), (16, 66987), (Start: 24 @66900 has 14 MA's), (Start: 28 @66861 has 1 MA's), (Start: 32 @66819 has 1 MA's), (40, 66693), (42, 66672), (44, 66660), (48, 66588), (55, 66474), (60, 66435), (62, 66417),

Gene: Numberten\_97 Start: 67032, Stop: 66301, Start Num: 13

Candidate Starts for Numberten\_97:

(Start: 13 @67032 has 253 MA's), (Start: 15 @66993 has 2 MA's), (16, 66966), (Start: 24 @66879 has 14 MA's), (Start: 28 @66840 has 1 MA's), (Start: 32 @66798 has 1 MA's), (40, 66672), (42, 66651), (44, 66639), (48, 66567), (55, 66453), (60, 66414), (62, 66396),

Gene: Nyala\_97 Start: 66768, Stop: 66037, Start Num: 13

Candidate Starts for Nyala\_97:

(Start: 13 @66768 has 253 MA's), (Start: 15 @66729 has 2 MA's), (16, 66702), (Start: 24 @66615 has 14 MA's), (Start: 28 @66576 has 1 MA's), (Start: 32 @66534 has 1 MA's), (40, 66408), (42, 66387), (44, 66375), (48, 66303), (55, 66189), (60, 66150), (62, 66132),

Gene: OSmaximus\_97 Start: 67321, Stop: 66590, Start Num: 13

Candidate Starts for OSmaximus\_97:

(9, 67540), (11, 67438), (Start: 13 @67321 has 253 MA's), (Start: 15 @67282 has 2 MA's), (16, 67255), (21, 67219), (Start: 24 @67168 has 14 MA's), (Start: 28 @67129 has 1 MA's), (40, 66961), (42, 66940), (44, 66928), (48, 66856), (55, 66742), (60, 66703), (62, 66685),

Gene: Olak\_99 Start: 67301, Stop: 66570, Start Num: 13

Candidate Starts for Olak\_99:

(Start: 13 @67301 has 253 MA's), (Start: 15 @67262 has 2 MA's), (16, 67235), (Start: 24 @67148 has 14 MA's), (Start: 28 @67109 has 1 MA's), (Start: 32 @67067 has 1 MA's), (40, 66941), (42, 66920), (44, 66908), (48, 66836), (55, 66722), (60, 66683), (62, 66665),

Gene: Oline\_96 Start: 66923, Stop: 66192, Start Num: 13

Candidate Starts for Oline\_96:

(Start: 13 @66923 has 253 MA's), (Start: 15 @66884 has 2 MA's), (16, 66857), (Start: 24 @66770 has 14 MA's), (Start: 28 @66731 has 1 MA's), (Start: 32 @66689 has 1 MA's), (40, 66563), (42, 66542), (44, 66530), (48, 66458), (55, 66344), (60, 66305), (62, 66287),

Gene: Olive\_93 Start: 67165, Stop: 66434, Start Num: 13

Candidate Starts for Olive\_93:

(Start: 13 @67165 has 253 MA's), (Start: 15 @67126 has 2 MA's), (16, 67099), (Start: 24 @67012 has 14 MA's), (Start: 28 @66973 has 1 MA's), (Start: 32 @66931 has 1 MA's), (40, 66805), (42, 66784), (44, 66772), (48, 66700), (55, 66586), (60, 66547), (62, 66529),

Gene: OliverWalter\_96 Start: 67217, Stop: 66486, Start Num: 13

Candidate Starts for OliverWalter\_96:

(Start: 13 @67217 has 253 MA's), (Start: 15 @67178 has 2 MA's), (16, 67151), (Start: 24 @67064 has 14 MA's), (Start: 28 @67025 has 1 MA's), (Start: 32 @66983 has 1 MA's), (40, 66857), (42, 66836), (44, 66824), (48, 66752), (55, 66638), (60, 66599), (62, 66581),

Gene: Omniscient\_98 Start: 67622, Stop: 66891, Start Num: 13

Candidate Starts for Omniscient\_98:

(Start: 13 @67622 has 253 MA's), (Start: 15 @67583 has 2 MA's), (16, 67556), (Start: 24 @67469 has 14 MA's), (Start: 28 @67430 has 1 MA's), (Start: 32 @67388 has 1 MA's), (40, 67262), (42, 67241), (44, 67229), (48, 67157), (55, 67043), (60, 67004), (62, 66986),

Gene: Oosterbaan\_97 Start: 67160, Stop: 66429, Start Num: 13

Candidate Starts for Oosterbaan\_97:

(Start: 13 @67160 has 253 MA's), (Start: 15 @67121 has 2 MA's), (16, 67094), (Start: 24 @67007 has 14 MA's), (Start: 28 @66968 has 1 MA's), (Start: 32 @66926 has 1 MA's), (40, 66800), (42, 66779), (44, 66767), (48, 66695), (55, 66581), (60, 66542), (62, 66524),

Gene: Opia\_85 Start: 63726, Stop: 63130, Start Num: 19

Candidate Starts for Opia\_85:

(12, 63837), (Start: 19 @63726 has 17 MA's), (Start: 20 @63708 has 2 MA's), (Start: 24 @63660 has 14 MA's), (26, 63633), (29, 63606), (30, 63597), (35, 63555), (36, 63546), (40, 63450), (44, 63414), (48, 63342), (53, 63246), (54, 63240), (58, 63198), (60, 63186),

Gene: Orfeu\_97 Start: 67281, Stop: 66550, Start Num: 13

Candidate Starts for Orfeu\_97:

(Start: 13 @67281 has 253 MA's), (Start: 15 @67242 has 2 MA's), (16, 67215), (Start: 24 @67128 has 14 MA's), (Start: 28 @67089 has 1 MA's), (Start: 32 @67047 has 1 MA's), (40, 66921), (42, 66900), (44, 66888), (48, 66816), (55, 66702), (60, 66663), (62, 66645),

Gene: Orion\_95 Start: 66852, Stop: 66121, Start Num: 13

Candidate Starts for Orion\_95:

(Start: 13 @66852 has 253 MA's), (Start: 15 @66813 has 2 MA's), (16, 66786), (Start: 24 @66699 has 14 MA's), (Start: 28 @66660 has 1 MA's), (Start: 32 @66618 has 1 MA's), (40, 66492), (42, 66471), (44, 66459), (48, 66387), (55, 66273), (60, 66234), (62, 66216),



Gene: Orwigg\_99 Start: 67057, Stop: 66326, Start Num: 13

Candidate Starts for Orwigg\_99:

(Start: 13 @67057 has 253 MA's), (Start: 15 @67018 has 2 MA's), (16, 66991), (Start: 24 @66904 has 14 MA's), (Start: 28 @66865 has 1 MA's), (Start: 32 @66823 has 1 MA's), (40, 66697), (42, 66676), (44, 66664), (48, 66592), (55, 66478), (60, 66439), (62, 66421),

Gene: PG1\_95 Start: 67424, Stop: 66693, Start Num: 13

Candidate Starts for PG1\_95:

(Start: 13 @67424 has 253 MA's), (Start: 15 @67385 has 2 MA's), (16, 67358), (Start: 24 @67271 has 14 MA's), (Start: 28 @67232 has 1 MA's), (Start: 32 @67190 has 1 MA's), (40, 67064), (42, 67043), (44, 67031), (48, 66959), (55, 66845), (60, 66806), (62, 66788),

Gene: Pacifista\_99 Start: 67142, Stop: 66411, Start Num: 13

Candidate Starts for Pacifista\_99:

(Start: 13 @67142 has 253 MA's), (Start: 15 @67103 has 2 MA's), (16, 67076), (Start: 24 @66989 has 14 MA's), (Start: 28 @66950 has 1 MA's), (Start: 32 @66908 has 1 MA's), (40, 66782), (42, 66761), (44, 66749), (48, 66677), (55, 66563), (60, 66524), (62, 66506),

Gene: Phamished\_96 Start: 66940, Stop: 66209, Start Num: 13

Candidate Starts for Phamished\_96:

(Start: 13 @66940 has 253 MA's), (Start: 15 @66901 has 2 MA's), (16, 66874), (Start: 24 @66787 has 14 MA's), (Start: 28 @66748 has 1 MA's), (Start: 32 @66706 has 1 MA's), (40, 66580), (42, 66559), (44, 66547), (48, 66475), (55, 66361), (60, 66322), (62, 66304),

Gene: Phantasmagoria\_83 Start: 63643, Stop: 63113, Start Num: 24

Candidate Starts for Phantasmagoria\_83:

(12, 63820), (Start: 19 @63709 has 17 MA's), (Start: 20 @63691 has 2 MA's), (Start: 24 @63643 has 14 MA's), (26, 63616), (29, 63589), (30, 63580), (35, 63538), (36, 63529), (40, 63433), (44, 63397), (48, 63325), (53, 63229), (54, 63223), (58, 63181), (60, 63169),

Gene: Phareon\_94 Start: 66465, Stop: 65734, Start Num: 13

Candidate Starts for Phareon\_94:

(Start: 13 @66465 has 253 MA's), (Start: 15 @66426 has 2 MA's), (16, 66399), (Start: 24 @66312 has 14 MA's), (Start: 28 @66273 has 1 MA's), (Start: 32 @66231 has 1 MA's), (40, 66105), (42, 66084), (44, 66072), (48, 66000), (55, 65886), (60, 65847), (62, 65829),

Gene: PhatCats2014\_96 Start: 67425, Stop: 66694, Start Num: 13

Candidate Starts for PhatCats2014\_96:

(Start: 13 @67425 has 253 MA's), (Start: 15 @67386 has 2 MA's), (16, 67359), (Start: 24 @67272 has 14 MA's), (Start: 28 @67233 has 1 MA's), (Start: 32 @67191 has 1 MA's), (40, 67065), (42, 67044), (44, 67032), (48, 66960), (55, 66846), (60, 66807), (62, 66789),

Gene: PhatLouie\_99 Start: 67298, Stop: 66567, Start Num: 13

Candidate Starts for PhatLouie\_99:

(Start: 13 @67298 has 253 MA's), (Start: 15 @67259 has 2 MA's), (16, 67232), (Start: 24 @67145 has 14 MA's), (Start: 28 @67106 has 1 MA's), (Start: 32 @67064 has 1 MA's), (40, 66938), (42, 66917), (44, 66905), (48, 66833), (55, 66719), (60, 66680), (62, 66662),

Gene: PhenghisKhan\_97 Start: 66929, Stop: 66198, Start Num: 13

Candidate Starts for PhenghisKhan\_97:

(Start: 13 @66929 has 253 MA's), (Start: 15 @66890 has 2 MA's), (16, 66863), (Start: 24 @66776 has 14 MA's), (Start: 28 @66737 has 1 MA's), (Start: 32 @66695 has 1 MA's), (40, 66569), (42, 66548), (44, 66536), (48, 66464), (55, 66350), (60, 66311), (62, 66293),

Gene: Pherdinand\_98 Start: 67144, Stop: 66413, Start Num: 13

Candidate Starts for Pherdinand\_98:

(Start: 13 @67144 has 253 MA's), (Start: 15 @67105 has 2 MA's), (16, 67078), (Start: 24 @66991 has 14 MA's), (Start: 28 @66952 has 1 MA's), (Start: 32 @66910 has 1 MA's), (40, 66784), (42, 66763), (44, 66751), (48, 66679), (55, 66565), (60, 66526), (62, 66508),

Gene: Phergie\_97 Start: 66918, Stop: 66187, Start Num: 13

Candidate Starts for Phergie\_97:

(Start: 13 @66918 has 253 MA's), (Start: 15 @66879 has 2 MA's), (16, 66852), (Start: 24 @66765 has 14 MA's), (Start: 28 @66726 has 1 MA's), (Start: 32 @66684 has 1 MA's), (40, 66558), (42, 66537), (44, 66525), (48, 66453), (55, 66339), (60, 66300), (62, 66282),

Gene: Phipps\_94 Start: 66718, Stop: 65987, Start Num: 13

Candidate Starts for Phipps\_94:

(Start: 13 @66718 has 253 MA's), (Start: 15 @66679 has 2 MA's), (16, 66652), (Start: 24 @66565 has 14 MA's), (Start: 28 @66526 has 1 MA's), (Start: 32 @66484 has 1 MA's), (40, 66358), (42, 66337), (44, 66325), (48, 66253), (55, 66139), (60, 66100), (62, 66082),

Gene: Phleuron\_94 Start: 66729, Stop: 65998, Start Num: 13

Candidate Starts for Phleuron\_94:

(9, 66948), (11, 66846), (Start: 13 @66729 has 253 MA's), (Start: 15 @66690 has 2 MA's), (Start: 24 @66576 has 14 MA's), (Start: 28 @66537 has 1 MA's), (40, 66369), (42, 66348), (44, 66336), (48, 66264), (55, 66150), (60, 66111), (62, 66093),

Gene: PhrankReynolds\_95 Start: 66923, Stop: 66192, Start Num: 13

Candidate Starts for PhrankReynolds\_95:

(Start: 13 @66923 has 253 MA's), (Start: 15 @66884 has 2 MA's), (16, 66857), (Start: 24 @66770 has 14 MA's), (Start: 28 @66731 has 1 MA's), (Start: 32 @66689 has 1 MA's), (40, 66563), (42, 66542), (44, 66530), (48, 66458), (55, 66344), (60, 66305), (62, 66287),

Gene: PhrodoBaggins\_99 Start: 67298, Stop: 66567, Start Num: 13

Candidate Starts for PhrodoBaggins\_99:

(Start: 13 @67298 has 253 MA's), (Start: 15 @67259 has 2 MA's), (16, 67232), (Start: 24 @67145 has 14 MA's), (Start: 28 @67106 has 1 MA's), (Start: 32 @67064 has 1 MA's), (40, 66938), (42, 66917), (44, 66905), (48, 66833), (55, 66719), (60, 66680), (62, 66662),

Gene: Phunky\_94 Start: 66800, Stop: 66069, Start Num: 13

Candidate Starts for Phunky\_94:

(Start: 13 @66800 has 253 MA's), (Start: 15 @66761 has 2 MA's), (16, 66734), (Start: 24 @66647 has 14 MA's), (Start: 28 @66608 has 1 MA's), (Start: 32 @66566 has 1 MA's), (40, 66440), (42, 66419), (44, 66407), (48, 66335), (55, 66221), (60, 66182), (62, 66164),

Gene: Piglet\_0096 Start: 67417, Stop: 66686, Start Num: 13

Candidate Starts for Piglet\_0096:

(Start: 13 @67417 has 253 MA's), (Start: 15 @67378 has 2 MA's), (16, 67351), (Start: 24 @67264 has 14 MA's), (Start: 28 @67225 has 1 MA's), (Start: 32 @67183 has 1 MA's), (40, 67057), (42, 67036), (44, 67024), (48, 66952), (55, 66838), (60, 66799), (62, 66781),

Gene: PinheadLarry\_96 Start: 67069, Stop: 66338, Start Num: 13

Candidate Starts for PinheadLarry\_96:

(Start: 13 @67069 has 253 MA's), (Start: 15 @67030 has 2 MA's), (16, 67003), (Start: 24 @66916 has 14 MA's), (Start: 28 @66877 has 1 MA's), (Start: 32 @66835 has 1 MA's), (40, 66709), (42, 66688),

(44, 66676), (48, 66604), (55, 66490), (60, 66451), (62, 66433),

Gene: Pinkman\_96 Start: 67141, Stop: 66410, Start Num: 13

Candidate Starts for Pinkman\_96:

(Start: 13 @67141 has 253 MA's), (Start: 15 @67102 has 2 MA's), (16, 67075), (Start: 28 @66949 has 1 MA's), (Start: 32 @66907 has 1 MA's), (40, 66781), (42, 66760), (44, 66748), (48, 66676), (55, 66562), (60, 66523), (62, 66505),

Gene: Pipsqueak\_94 Start: 66752, Stop: 66021, Start Num: 13

Candidate Starts for Pipsqueak\_94:

(Start: 13 @66752 has 253 MA's), (Start: 15 @66713 has 2 MA's), (16, 66686), (Start: 24 @66599 has 14 MA's), (Start: 28 @66560 has 1 MA's), (40, 66392), (42, 66371), (44, 66359), (48, 66287), (55, 66173), (60, 66134), (62, 66116),

Gene: Placalicious\_94 Start: 67510, Stop: 66779, Start Num: 13

Candidate Starts for Placalicious\_94:

(Start: 13 @67510 has 253 MA's), (Start: 15 @67471 has 2 MA's), (16, 67444), (Start: 24 @67357 has 14 MA's), (Start: 28 @67318 has 1 MA's), (Start: 32 @67276 has 1 MA's), (40, 67150), (42, 67129), (44, 67117), (48, 67045), (55, 66931), (60, 66892), (62, 66874),

Gene: Plmatters\_94 Start: 66743, Stop: 66012, Start Num: 13

Candidate Starts for Plmatters\_94:

(Start: 13 @66743 has 253 MA's), (Start: 15 @66704 has 2 MA's), (16, 66677), (Start: 24 @66590 has 14 MA's), (Start: 28 @66551 has 1 MA's), (Start: 32 @66509 has 1 MA's), (40, 66383), (42, 66362), (44, 66350), (48, 66278), (55, 66164), (60, 66125), (62, 66107),

Gene: Podrick\_95 Start: 66831, Stop: 66100, Start Num: 13

Candidate Starts for Podrick\_95:

(Start: 13 @66831 has 253 MA's), (Start: 15 @66792 has 2 MA's), (16, 66765), (Start: 24 @66678 has 14 MA's), (Start: 28 @66639 has 1 MA's), (Start: 32 @66597 has 1 MA's), (40, 66471), (42, 66450), (44, 66438), (48, 66366), (55, 66252), (60, 66213), (62, 66195),

Gene: Pops\_94 Start: 66731, Stop: 66201, Start Num: 28

Candidate Starts for Pops\_94:

(Start: 28 @66731 has 1 MA's), (Start: 32 @66698 has 1 MA's), (40, 66572), (42, 66551), (44, 66539), (48, 66467), (55, 66353), (60, 66314), (62, 66296),

Gene: Potter\_91 Start: 66752, Stop: 66021, Start Num: 13

Candidate Starts for Potter\_91:

(Start: 13 @66752 has 253 MA's), (Start: 15 @66713 has 2 MA's), (16, 66686), (Start: 24 @66599 has 14 MA's), (Start: 28 @66560 has 1 MA's), (Start: 32 @66518 has 1 MA's), (40, 66392), (42, 66371), (44, 66359), (48, 66287), (55, 66173), (60, 66134), (62, 66116),

Gene: Prickles\_97 Start: 66878, Stop: 66147, Start Num: 13

Candidate Starts for Prickles\_97:

(Start: 13 @66878 has 253 MA's), (Start: 15 @66839 has 2 MA's), (16, 66812), (Start: 24 @66725 has 14 MA's), (Start: 28 @66686 has 1 MA's), (Start: 32 @66644 has 1 MA's), (40, 66518), (42, 66497), (44, 66485), (48, 66413), (55, 66299), (60, 66260), (62, 66242),

Gene: ProfessorX\_94 Start: 66511, Stop: 65780, Start Num: 13

Candidate Starts for ProfessorX\_94:

(Start: 13 @66511 has 253 MA's), (Start: 15 @66472 has 2 MA's), (16, 66445), (Start: 24 @66358 has 14 MA's), (Start: 28 @66319 has 1 MA's), (Start: 32 @66277 has 1 MA's), (40, 66151), (42, 66130),

(44, 66118), (48, 66046), (55, 65932), (60, 65893), (62, 65875),

Gene: Puhltonio\_92 Start: 66748, Stop: 66017, Start Num: 13

Candidate Starts for Puhltonio\_92:

(Start: 13 @66748 has 253 MA's), (Start: 15 @66709 has 2 MA's), (16, 66682), (Start: 24 @66595 has 14 MA's), (Start: 28 @66556 has 1 MA's), (Start: 32 @66514 has 1 MA's), (40, 66388), (42, 66367), (44, 66355), (48, 66283), (55, 66169), (60, 66130), (62, 66112),

Gene: QueenBeane\_97 Start: 67075, Stop: 66344, Start Num: 13

Candidate Starts for QueenBeane\_97:

(Start: 13 @67075 has 253 MA's), (Start: 15 @67036 has 2 MA's), (16, 67009), (Start: 24 @66922 has 14 MA's), (Start: 28 @66883 has 1 MA's), (Start: 32 @66841 has 1 MA's), (40, 66715), (42, 66694), (44, 66682), (48, 66610), (55, 66496), (60, 66457), (62, 66439),

Gene: Quisquilliae\_99 Start: 67086, Stop: 66355, Start Num: 13

Candidate Starts for Quisquilliae\_99:

(Start: 13 @67086 has 253 MA's), (Start: 15 @67047 has 2 MA's), (16, 67020), (Start: 24 @66933 has 14 MA's), (Start: 28 @66894 has 1 MA's), (Start: 32 @66852 has 1 MA's), (40, 66726), (42, 66705), (44, 66693), (48, 66621), (55, 66507), (60, 66468), (62, 66450),

Gene: Qyrzula\_75 Start: 63848, Stop: 63252, Start Num: 19

Candidate Starts for Qyrzula\_75:

(12, 63959), (Start: 19 @63848 has 17 MA's), (Start: 20 @63830 has 2 MA's), (Start: 24 @63782 has 14 MA's), (26, 63755), (29, 63728), (30, 63719), (35, 63677), (36, 63668), (40, 63572), (44, 63536), (48, 63464), (53, 63368), (54, 63362), (58, 63320), (60, 63308),

Gene: RedMaple\_95 Start: 67409, Stop: 66678, Start Num: 13

Candidate Starts for RedMaple\_95:

(9, 67628), (11, 67526), (Start: 13 @67409 has 253 MA's), (Start: 15 @67370 has 2 MA's), (16, 67343), (21, 67307), (Start: 24 @67256 has 14 MA's), (Start: 28 @67217 has 1 MA's), (40, 67049), (42, 67028), (44, 67016), (48, 66944), (55, 66830), (60, 66791), (62, 66773),

Gene: Rhinoforte\_84 Start: 63745, Stop: 63149, Start Num: 19

Candidate Starts for Rhinoforte\_84:

(12, 63856), (Start: 19 @63745 has 17 MA's), (Start: 20 @63727 has 2 MA's), (Start: 24 @63679 has 14 MA's), (26, 63652), (29, 63625), (30, 63616), (35, 63574), (36, 63565), (40, 63469), (44, 63433), (48, 63361), (53, 63265), (54, 63259), (58, 63217), (60, 63205),

Gene: Ricotta\_98 Start: 66771, Stop: 66040, Start Num: 13

Candidate Starts for Ricotta\_98:

(Start: 13 @66771 has 253 MA's), (Start: 15 @66732 has 2 MA's), (16, 66705), (Start: 24 @66618 has 14 MA's), (Start: 28 @66579 has 1 MA's), (Start: 32 @66537 has 1 MA's), (40, 66411), (42, 66390), (44, 66378), (48, 66306), (55, 66192), (60, 66153), (62, 66135),

Gene: Riggan\_98 Start: 67256, Stop: 66525, Start Num: 13

Candidate Starts for Riggan\_98:

(Start: 13 @67256 has 253 MA's), (Start: 15 @67217 has 2 MA's), (16, 67190), (Start: 24 @67103 has 14 MA's), (Start: 28 @67064 has 1 MA's), (Start: 32 @67022 has 1 MA's), (40, 66896), (42, 66875), (44, 66863), (48, 66791), (55, 66677), (60, 66638), (62, 66620),

Gene: Rimu\_100 Start: 67235, Stop: 66504, Start Num: 13

Candidate Starts for Rimu\_100:

(Start: 13 @67235 has 253 MA's), (Start: 15 @67196 has 2 MA's), (16, 67169), (Start: 28 @67043 has 1 MA's), (Start: 32 @67001 has 1 MA's), (40, 66875), (42, 66854), (44, 66842), (48, 66770), (55, 66656), (60, 66617), (62, 66599),

Gene: Roliet\_94 Start: 66115, Stop: 65384, Start Num: 13

Candidate Starts for Roliet\_94:

(Start: 13 @66115 has 253 MA's), (Start: 15 @66076 has 2 MA's), (16, 66049), (Start: 24 @65962 has 14 MA's), (Start: 28 @65923 has 1 MA's), (40, 65755), (42, 65734), (44, 65722), (55, 65536), (60, 65497), (62, 65479),

Gene: Roscoe\_95 Start: 67027, Stop: 66401, Start Num: 13

Candidate Starts for Roscoe\_95:

(9, 67246), (11, 67144), (Start: 13 @67027 has 253 MA's), (Start: 24 @66979 has 14 MA's), (Start: 28 @66940 has 1 MA's), (Start: 32 @66898 has 1 MA's), (40, 66772), (42, 66751), (44, 66739), (48, 66667), (55, 66553), (60, 66514), (62, 66496),

Gene: Rosebush\_82 Start: 63817, Stop: 63221, Start Num: 19

Candidate Starts for Rosebush\_82:

(12, 63928), (Start: 19 @63817 has 17 MA's), (Start: 20 @63799 has 2 MA's), (Start: 24 @63751 has 14 MA's), (26, 63724), (30, 63688), (35, 63646), (36, 63637), (40, 63541), (44, 63505), (48, 63433), (53, 63337), (54, 63331), (58, 63289), (60, 63277),

Gene: Roy17\_94 Start: 66481, Stop: 65750, Start Num: 13

Candidate Starts for Roy17\_94:

(Start: 13 @66481 has 253 MA's), (Start: 15 @66442 has 2 MA's), (16, 66415), (Start: 28 @66289 has 1 MA's), (Start: 32 @66247 has 1 MA's), (40, 66121), (42, 66100), (44, 66088), (48, 66016), (55, 65902), (60, 65863), (62, 65845),

Gene: SDcharge11\_95 Start: 66131, Stop: 65400, Start Num: 13

Candidate Starts for SDcharge11\_95:

(9, 66350), (11, 66248), (Start: 13 @66131 has 253 MA's), (Start: 15 @66092 has 2 MA's), (16, 66065), (21, 66029), (Start: 24 @65978 has 14 MA's), (Start: 28 @65939 has 1 MA's), (40, 65771), (42, 65750), (44, 65738), (55, 65552), (60, 65513), (62, 65495),

Gene: Sabella\_84 Start: 63653, Stop: 63057, Start Num: 19

Candidate Starts for Sabella\_84:

(12, 63764), (Start: 19 @63653 has 17 MA's), (Start: 20 @63635 has 2 MA's), (Start: 24 @63587 has 14 MA's), (26, 63560), (29, 63533), (30, 63524), (35, 63482), (36, 63473), (40, 63377), (44, 63341), (48, 63269), (53, 63173), (54, 63167), (58, 63125), (60, 63113),

Gene: Samaymay\_97 Start: 67075, Stop: 66344, Start Num: 13

Candidate Starts for Samaymay\_97:

(Start: 13 @67075 has 253 MA's), (Start: 15 @67036 has 2 MA's), (16, 67009), (Start: 24 @66922 has 14 MA's), (Start: 28 @66883 has 1 MA's), (Start: 32 @66841 has 1 MA's), (40, 66715), (42, 66694), (44, 66682), (48, 66610), (55, 66496), (60, 66457), (62, 66439),

Gene: SassyCat97\_95 Start: 66743, Stop: 66012, Start Num: 13

Candidate Starts for SassyCat97\_95:

(Start: 13 @66743 has 253 MA's), (Start: 15 @66704 has 2 MA's), (16, 66677), (Start: 24 @66590 has 14 MA's), (Start: 28 @66551 has 1 MA's), (Start: 32 @66509 has 1 MA's), (40, 66383), (42, 66362), (44, 66350), (48, 66278), (55, 66164), (60, 66125), (62, 66107),

Gene: Schadenfreude\_97 Start: 66792, Stop: 66061, Start Num: 13

Candidate Starts for Schadenfreude\_97:

(9, 67011), (11, 66909), (Start: 13 @66792 has 253 MA's), (Start: 15 @66753 has 2 MA's), (16, 66726), (21, 66690), (Start: 24 @66639 has 14 MA's), (Start: 28 @66600 has 1 MA's), (40, 66432), (42, 66411), (44, 66399), (48, 66327), (55, 66213), (60, 66174), (62, 66156),

Gene: Schueller\_96 Start: 67016, Stop: 66285, Start Num: 13

Candidate Starts for Schueller\_96:

(9, 67235), (11, 67133), (Start: 13 @67016 has 253 MA's), (Start: 15 @66977 has 2 MA's), (Start: 24 @66863 has 14 MA's), (Start: 28 @66824 has 1 MA's), (40, 66656), (42, 66635), (44, 66623), (48, 66551), (55, 66437), (60, 66398), (62, 66380),

Gene: Scoot17C\_97 Start: 66857, Stop: 66126, Start Num: 13

Candidate Starts for Scoot17C\_97:

(Start: 13 @66857 has 253 MA's), (Start: 15 @66818 has 2 MA's), (16, 66791), (Start: 24 @66704 has 14 MA's), (Start: 28 @66665 has 1 MA's), (Start: 32 @66623 has 1 MA's), (40, 66497), (42, 66476), (44, 66464), (48, 66392), (55, 66278), (60, 66239), (62, 66221),

Gene: Scrick\_98 Start: 67126, Stop: 66395, Start Num: 13

Candidate Starts for Scrick\_98:

(Start: 13 @67126 has 253 MA's), (Start: 15 @67087 has 2 MA's), (16, 67060), (Start: 24 @66973 has 14 MA's), (Start: 28 @66934 has 1 MA's), (Start: 32 @66892 has 1 MA's), (40, 66766), (42, 66745), (44, 66733), (48, 66661), (55, 66547), (60, 66508), (62, 66490),

Gene: Selr12\_101 Start: 67167, Stop: 66436, Start Num: 13

Candidate Starts for Selr12\_101:

(Start: 13 @67167 has 253 MA's), (Start: 15 @67128 has 2 MA's), (16, 67101), (Start: 24 @67014 has 14 MA's), (Start: 28 @66975 has 1 MA's), (Start: 32 @66933 has 1 MA's), (40, 66807), (42, 66786), (44, 66774), (48, 66702), (55, 66588), (60, 66549), (62, 66531),

Gene: Serendipity\_96 Start: 67229, Stop: 66498, Start Num: 13

Candidate Starts for Serendipity\_96:

(Start: 13 @67229 has 253 MA's), (Start: 15 @67190 has 2 MA's), (16, 67163), (Start: 24 @67076 has 14 MA's), (Start: 28 @67037 has 1 MA's), (Start: 32 @66995 has 1 MA's), (40, 66869), (42, 66848), (44, 66836), (48, 66764), (55, 66650), (60, 66611), (62, 66593),

Gene: Serpentine\_0099 Start: 67309, Stop: 66578, Start Num: 13

Candidate Starts for Serpentine\_0099:

(Start: 13 @67309 has 253 MA's), (Start: 15 @67270 has 2 MA's), (16, 67243), (Start: 24 @67156 has 14 MA's), (Start: 28 @67117 has 1 MA's), (Start: 32 @67075 has 1 MA's), (40, 66949), (42, 66928), (44, 66916), (48, 66844), (55, 66730), (60, 66691), (62, 66673),

Gene: Sheila\_91 Start: 66309, Stop: 65578, Start Num: 13

Candidate Starts for Sheila\_91:

(Start: 13 @66309 has 253 MA's), (Start: 15 @66270 has 2 MA's), (16, 66243), (Start: 24 @66156 has 14 MA's), (Start: 28 @66117 has 1 MA's), (Start: 32 @66075 has 1 MA's), (40, 65949), (42, 65928), (44, 65916), (48, 65844), (55, 65730), (60, 65691), (62, 65673),

Gene: Shenyu\_90 Start: 66352, Stop: 65735, Start Num: 28

Candidate Starts for Shenyu\_90:

(7, 66787), (18, 66457), (Start: 28 @66352 has 1 MA's), (40, 66184), (41, 66175), (50, 66067), (57, 65950), (60, 65926), (62, 65908), (70, 65815),

Gene: ShiVal\_96 Start: 66780, Stop: 66049, Start Num: 13

Candidate Starts for ShiVal\_96:

(Start: 13 @66780 has 253 MA's), (Start: 15 @66741 has 2 MA's), (16, 66714), (Start: 24 @66627 has 14 MA's), (Start: 28 @66588 has 1 MA's), (Start: 32 @66546 has 1 MA's), (40, 66420), (42, 66399), (44, 66387), (48, 66315), (55, 66201), (60, 66162), (62, 66144),

Gene: Sigman\_96 Start: 66736, Stop: 66005, Start Num: 13

Candidate Starts for Sigman\_96:

(Start: 13 @66736 has 253 MA's), (Start: 15 @66697 has 2 MA's), (16, 66670), (Start: 24 @66583 has 14 MA's), (Start: 28 @66544 has 1 MA's), (Start: 32 @66502 has 1 MA's), (40, 66376), (42, 66355), (44, 66343), (48, 66271), (55, 66157), (60, 66118), (62, 66100),

Gene: SilverBell\_98 Start: 67190, Stop: 66459, Start Num: 13

Candidate Starts for SilverBell\_98:

(Start: 13 @67190 has 253 MA's), (Start: 15 @67151 has 2 MA's), (16, 67124), (Start: 24 @67037 has 14 MA's), (Start: 28 @66998 has 1 MA's), (Start: 32 @66956 has 1 MA's), (40, 66830), (42, 66809), (44, 66797), (48, 66725), (55, 66611), (60, 66572), (62, 66554),

Gene: Simielle\_97 Start: 66722, Stop: 65991, Start Num: 13

Candidate Starts for Simielle\_97:

(Start: 13 @66722 has 253 MA's), (Start: 15 @66683 has 2 MA's), (16, 66656), (Start: 24 @66569 has 14 MA's), (Start: 28 @66530 has 1 MA's), (Start: 32 @66488 has 1 MA's), (40, 66362), (42, 66341), (44, 66329), (48, 66257), (55, 66143), (60, 66104), (62, 66086),

Gene: Skippy\_97 Start: 67151, Stop: 66420, Start Num: 13

Candidate Starts for Skippy\_97:

(Start: 13 @67151 has 253 MA's), (Start: 15 @67112 has 2 MA's), (16, 67085), (Start: 24 @66998 has 14 MA's), (Start: 28 @66959 has 1 MA's), (Start: 32 @66917 has 1 MA's), (40, 66791), (42, 66770), (44, 66758), (48, 66686), (55, 66572), (60, 66533), (62, 66515),

Gene: Slatt\_99 Start: 67407, Stop: 66676, Start Num: 13

Candidate Starts for Slatt\_99:

(Start: 13 @67407 has 253 MA's), (Start: 15 @67368 has 2 MA's), (16, 67341), (Start: 24 @67254 has 14 MA's), (Start: 28 @67215 has 1 MA's), (Start: 32 @67173 has 1 MA's), (40, 67047), (42, 67026), (44, 67014), (48, 66942), (55, 66828), (60, 66789), (62, 66771),

Gene: Soile\_98 Start: 67276, Stop: 66545, Start Num: 13

Candidate Starts for Soile\_98:

(Start: 13 @67276 has 253 MA's), (Start: 15 @67237 has 2 MA's), (16, 67210), (Start: 24 @67123 has 14 MA's), (Start: 28 @67084 has 1 MA's), (Start: 32 @67042 has 1 MA's), (40, 66916), (42, 66895), (44, 66883), (48, 66811), (55, 66697), (60, 66658), (62, 66640),

Gene: Solosis\_95 Start: 66744, Stop: 66013, Start Num: 13

Candidate Starts for Solosis\_95:

(Start: 13 @66744 has 253 MA's), (Start: 15 @66705 has 2 MA's), (16, 66678), (Start: 24 @66591 has 14 MA's), (Start: 28 @66552 has 1 MA's), (Start: 32 @66510 has 1 MA's), (40, 66384), (42, 66363), (44, 66351), (48, 66279), (55, 66165), (60, 66126), (62, 66108),

Gene: Sophia\_95 Start: 66731, Stop: 66000, Start Num: 13

Candidate Starts for Sophia\_95:

(Start: 13 @66731 has 253 MA's), (Start: 15 @66692 has 2 MA's), (16, 66665), (Start: 24 @66578 has 14 MA's), (Start: 28 @66539 has 1 MA's), (Start: 32 @66497 has 1 MA's), (40, 66371), (42, 66350), (44, 66338), (48, 66266), (55, 66152), (60, 66113), (62, 66095),

Gene: Soto\_93 Start: 66172, Stop: 65441, Start Num: 13

Candidate Starts for Soto\_93:

(Start: 13 @66172 has 253 MA's), (Start: 15 @66133 has 2 MA's), (16, 66106), (Start: 24 @66019 has 14 MA's), (Start: 28 @65980 has 1 MA's), (40, 65812), (42, 65791), (44, 65779), (48, 65707), (55, 65593), (60, 65554), (62, 65536),

Gene: Spartan300\_96 Start: 66993, Stop: 66262, Start Num: 13

Candidate Starts for Spartan300\_96:

(Start: 13 @66993 has 253 MA's), (Start: 15 @66954 has 2 MA's), (16, 66927), (Start: 24 @66840 has 14 MA's), (Start: 28 @66801 has 1 MA's), (Start: 32 @66759 has 1 MA's), (40, 66633), (42, 66612), (44, 66600), (48, 66528), (55, 66414), (60, 66375), (62, 66357),

Gene: Squid\_96 Start: 67021, Stop: 66290, Start Num: 13

Candidate Starts for Squid\_96:

(Start: 13 @67021 has 253 MA's), (Start: 15 @66982 has 2 MA's), (16, 66955), (Start: 24 @66868 has 14 MA's), (Start: 28 @66829 has 1 MA's), (Start: 32 @66787 has 1 MA's), (40, 66661), (42, 66640), (44, 66628), (48, 66556), (55, 66442), (60, 66403), (62, 66385),

Gene: Squiggle\_96 Start: 66750, Stop: 66019, Start Num: 13

Candidate Starts for Squiggle\_96:

(Start: 13 @66750 has 253 MA's), (Start: 15 @66711 has 2 MA's), (16, 66684), (Start: 24 @66597 has 14 MA's), (Start: 28 @66558 has 1 MA's), (Start: 32 @66516 has 1 MA's), (40, 66390), (42, 66369), (44, 66357), (48, 66285), (55, 66171), (60, 66132), (62, 66114),

Gene: Struggle\_97 Start: 66848, Stop: 66117, Start Num: 13

Candidate Starts for Struggle\_97:

(Start: 13 @66848 has 253 MA's), (Start: 15 @66809 has 2 MA's), (16, 66782), (Start: 24 @66695 has 14 MA's), (Start: 28 @66656 has 1 MA's), (Start: 32 @66614 has 1 MA's), (40, 66488), (42, 66467), (44, 66455), (48, 66383), (55, 66269), (60, 66230), (62, 66212),

Gene: Suffolk\_92 Start: 66677, Stop: 65946, Start Num: 13

Candidate Starts for Suffolk\_92:

(Start: 13 @66677 has 253 MA's), (Start: 15 @66638 has 2 MA's), (16, 66611), (Start: 24 @66524 has 14 MA's), (Start: 28 @66485 has 1 MA's), (Start: 32 @66443 has 1 MA's), (40, 66317), (42, 66296), (44, 66284), (48, 66212), (55, 66098), (60, 66059), (62, 66041),

Gene: Suigeneris\_90 Start: 66233, Stop: 65547, Start Num: 22

Candidate Starts for Suigeneris\_90:

(2, 67112), (7, 66617), (18, 66287), (Start: 22 @66233 has 3 MA's), (Start: 28 @66158 has 1 MA's), (40, 65993), (41, 65984), (50, 65876), (57, 65759), (60, 65735), (62, 65717), (66, 65681), (72, 65600),

Gene: Surely\_97 Start: 67313, Stop: 66582, Start Num: 13

Candidate Starts for Surely\_97:

(Start: 13 @67313 has 253 MA's), (Start: 15 @67274 has 2 MA's), (16, 67247), (Start: 28 @67121 has 1 MA's), (Start: 32 @67079 has 1 MA's), (40, 66953), (42, 66932), (44, 66920), (48, 66848), (55, 66734), (60, 66695), (62, 66677),

Gene: Swiphy\_101 Start: 67298, Stop: 66567, Start Num: 13

Candidate Starts for Swiphy\_101:

(Start: 13 @67298 has 253 MA's), (Start: 15 @67259 has 2 MA's), (16, 67232), (Start: 24 @67145 has 14 MA's), (Start: 28 @67106 has 1 MA's), (Start: 32 @67064 has 1 MA's), (40, 66938), (42, 66917), (44, 66905), (48, 66833), (55, 66719), (60, 66680), (62, 66662),



Gene: Swish\_98 Start: 67160, Stop: 66429, Start Num: 13

Candidate Starts for Swish\_98:

(Start: 13 @67160 has 253 MA's), (Start: 15 @67121 has 2 MA's), (16, 67094), (Start: 24 @67007 has 14 MA's), (Start: 28 @66968 has 1 MA's), (Start: 32 @66926 has 1 MA's), (40, 66800), (42, 66779), (44, 66767), (48, 66695), (55, 66581), (60, 66542), (62, 66524),

Gene: TA17A\_85 Start: 63594, Stop: 63064, Start Num: 24

Candidate Starts for TA17A\_85:

(12, 63771), (Start: 19 @63660 has 17 MA's), (Start: 20 @63642 has 2 MA's), (Start: 24 @63594 has 14 MA's), (26, 63567), (30, 63531), (35, 63489), (36, 63480), (40, 63384), (44, 63348), (48, 63276), (53, 63180), (54, 63174), (58, 63132), (60, 63120),

Gene: TallGrassMM\_96 Start: 66809, Stop: 66078, Start Num: 13

Candidate Starts for TallGrassMM\_96:

(Start: 13 @66809 has 253 MA's), (Start: 15 @66770 has 2 MA's), (16, 66743), (Start: 24 @66656 has 14 MA's), (Start: 28 @66617 has 1 MA's), (Start: 32 @66575 has 1 MA's), (40, 66449), (42, 66428), (44, 66416), (48, 66344), (55, 66230), (60, 66191), (62, 66173),

Gene: Telesworld\_95 Start: 66883, Stop: 66152, Start Num: 13

Candidate Starts for Telesworld\_95:

(Start: 13 @66883 has 253 MA's), (Start: 15 @66844 has 2 MA's), (16, 66817), (Start: 24 @66730 has 14 MA's), (Start: 28 @66691 has 1 MA's), (Start: 32 @66649 has 1 MA's), (40, 66523), (42, 66502), (44, 66490), (48, 66418), (55, 66304), (60, 66265), (62, 66247),

Gene: Thora\_95 Start: 67264, Stop: 66533, Start Num: 13

Candidate Starts for Thora\_95:

(Start: 13 @67264 has 253 MA's), (Start: 15 @67225 has 2 MA's), (16, 67198), (Start: 24 @67111 has 14 MA's), (Start: 28 @67072 has 1 MA's), (Start: 32 @67030 has 1 MA's), (40, 66904), (42, 66883), (44, 66871), (48, 66799), (55, 66685), (60, 66646), (62, 66628),

Gene: ThreeOh3D2\_98 Start: 67417, Stop: 66686, Start Num: 13

Candidate Starts for ThreeOh3D2\_98:

(Start: 13 @67417 has 253 MA's), (Start: 15 @67378 has 2 MA's), (16, 67351), (Start: 24 @67264 has 14 MA's), (Start: 28 @67225 has 1 MA's), (Start: 32 @67183 has 1 MA's), (40, 67057), (42, 67036), (44, 67024), (48, 66952), (55, 66838), (60, 66799), (62, 66781),

Gene: Thunderbird\_97 Start: 67005, Stop: 66274, Start Num: 13

Candidate Starts for Thunderbird\_97:

(Start: 13 @67005 has 253 MA's), (Start: 15 @66966 has 2 MA's), (16, 66939), (Start: 24 @66852 has 14 MA's), (Start: 28 @66813 has 1 MA's), (Start: 32 @66771 has 1 MA's), (40, 66645), (42, 66624), (44, 66612), (48, 66540), (55, 66426), (60, 66387), (62, 66369),

Gene: Timmi\_95 Start: 66780, Stop: 66049, Start Num: 13

Candidate Starts for Timmi\_95:

(Start: 13 @66780 has 253 MA's), (Start: 15 @66741 has 2 MA's), (16, 66714), (Start: 24 @66627 has 14 MA's), (Start: 28 @66588 has 1 MA's), (Start: 32 @66546 has 1 MA's), (40, 66420), (42, 66399), (44, 66387), (48, 66315), (55, 66201), (60, 66162), (62, 66144),

Gene: Tinciduntolum\_85 Start: 63824, Stop: 63228, Start Num: 19

Candidate Starts for Tinciduntolum\_85:

(12, 63935), (Start: 19 @63824 has 17 MA's), (Start: 20 @63806 has 2 MA's), (Start: 24 @63758 has 14 MA's), (26, 63731), (29, 63704), (30, 63695), (35, 63653), (36, 63644), (40, 63548), (44, 63512), (48, 63440), (53, 63344), (54, 63338), (58, 63296), (60, 63284),

Gene: TomBombadil\_97 Start: 67305, Stop: 66574, Start Num: 13

Candidate Starts for TomBombadil\_97:

(Start: 13 @67305 has 253 MA's), (Start: 15 @67266 has 2 MA's), (16, 67239), (Start: 24 @67152 has 14 MA's), (Start: 28 @67113 has 1 MA's), (Start: 32 @67071 has 1 MA's), (40, 66945), (42, 66924), (44, 66912), (48, 66840), (55, 66726), (60, 66687), (62, 66669),

Gene: Tomlarah\_97 Start: 67613, Stop: 66882, Start Num: 13

Candidate Starts for Tomlarah\_97:

(Start: 13 @67613 has 253 MA's), (Start: 15 @67574 has 2 MA's), (16, 67547), (Start: 24 @67460 has 14 MA's), (Start: 28 @67421 has 1 MA's), (Start: 32 @67379 has 1 MA's), (40, 67253), (42, 67232), (44, 67220), (48, 67148), (55, 67034), (60, 66995), (62, 66977),

Gene: Toni\_96 Start: 67209, Stop: 66478, Start Num: 13

Candidate Starts for Toni\_96:

(Start: 13 @67209 has 253 MA's), (Start: 15 @67170 has 2 MA's), (16, 67143), (Start: 24 @67056 has 14 MA's), (Start: 28 @67017 has 1 MA's), (Start: 32 @66975 has 1 MA's), (40, 66849), (42, 66828), (44, 66816), (48, 66744), (55, 66630), (60, 66591), (62, 66573),

Gene: Tooj\_94 Start: 66423, Stop: 65692, Start Num: 13

Candidate Starts for Tooj\_94:

(Start: 13 @66423 has 253 MA's), (Start: 15 @66384 has 2 MA's), (16, 66357), (Start: 24 @66270 has 14 MA's), (Start: 28 @66231 has 1 MA's), (Start: 32 @66189 has 1 MA's), (40, 66063), (42, 66042), (44, 66030), (55, 65844), (60, 65805), (62, 65787),

Gene: Tres\_84 Start: 63660, Stop: 63079, Start Num: 20

Candidate Starts for Tres\_84:

(12, 63789), (Start: 19 @63678 has 17 MA's), (Start: 20 @63660 has 2 MA's), (Start: 24 @63609 has 14 MA's), (26, 63582), (29, 63555), (30, 63546), (35, 63504), (36, 63495), (40, 63399), (44, 63363), (48, 63291), (53, 63195), (54, 63189), (58, 63147), (60, 63135),

Gene: True\_98 Start: 67125, Stop: 66394, Start Num: 13

Candidate Starts for True\_98:

(Start: 13 @67125 has 253 MA's), (Start: 15 @67086 has 2 MA's), (16, 67059), (Start: 24 @66972 has 14 MA's), (Start: 28 @66933 has 1 MA's), (Start: 32 @66891 has 1 MA's), (40, 66765), (42, 66744), (44, 66732), (48, 66660), (55, 66546), (60, 66507), (62, 66489),

Gene: Trypo\_97 Start: 67477, Stop: 66746, Start Num: 13

Candidate Starts for Trypo\_97:

(Start: 13 @67477 has 253 MA's), (Start: 15 @67438 has 2 MA's), (16, 67411), (Start: 24 @67324 has 14 MA's), (Start: 28 @67285 has 1 MA's), (Start: 32 @67243 has 1 MA's), (40, 67117), (42, 67096), (44, 67084), (48, 67012), (55, 66898), (60, 66859), (62, 66841),

Gene: TyrionL\_97 Start: 66839, Stop: 66108, Start Num: 13

Candidate Starts for TyrionL\_97:

(9, 67058), (11, 66956), (Start: 13 @66839 has 253 MA's), (Start: 15 @66800 has 2 MA's), (Start: 24 @66686 has 14 MA's), (Start: 28 @66647 has 1 MA's), (40, 66479), (42, 66458), (44, 66446), (48, 66374), (55, 66260), (60, 66221), (62, 66203),

Gene: UAch1\_97 Start: 66830, Stop: 66099, Start Num: 13

Candidate Starts for UAch1\_97:

(Start: 13 @66830 has 253 MA's), (Start: 15 @66791 has 2 MA's), (16, 66764), (Start: 24 @66677 has 14 MA's), (Start: 28 @66638 has 1 MA's), (Start: 32 @66596 has 1 MA's), (40, 66470), (42, 66449),

(44, 66437), (48, 66365), (55, 66251), (60, 66212), (62, 66194),

Gene: UncleHowie\_93 Start: 66441, Stop: 65710, Start Num: 13

Candidate Starts for UncleHowie\_93:

(Start: 13 @66441 has 253 MA's), (Start: 15 @66402 has 2 MA's), (16, 66375), (Start: 24 @66288 has 14 MA's), (Start: 28 @66249 has 1 MA's), (Start: 32 @66207 has 1 MA's), (40, 66081), (42, 66060), (44, 66048), (48, 65976), (55, 65862), (60, 65823), (62, 65805),

Gene: Usavi\_97 Start: 67603, Stop: 66872, Start Num: 13

Candidate Starts for Usavi\_97:

(Start: 13 @67603 has 253 MA's), (Start: 15 @67564 has 2 MA's), (16, 67537), (Start: 24 @67450 has 14 MA's), (Start: 28 @67411 has 1 MA's), (Start: 32 @67369 has 1 MA's), (40, 67243), (42, 67222), (44, 67210), (48, 67138), (55, 67024), (60, 66985), (62, 66967),

Gene: Valjean\_95 Start: 66985, Stop: 66254, Start Num: 13

Candidate Starts for Valjean\_95:

(Start: 13 @66985 has 253 MA's), (Start: 15 @66946 has 2 MA's), (16, 66919), (Start: 28 @66793 has 1 MA's), (Start: 32 @66751 has 1 MA's), (40, 66625), (42, 66604), (44, 66592), (48, 66520), (55, 66406), (60, 66367), (62, 66349),

Gene: Vaticameos\_94 Start: 65312, Stop: 64581, Start Num: 13

Candidate Starts for Vaticameos\_94:

(Start: 13 @65312 has 253 MA's), (Start: 15 @65273 has 2 MA's), (16, 65246), (Start: 24 @65159 has 14 MA's), (Start: 28 @65120 has 1 MA's), (Start: 32 @65078 has 1 MA's), (40, 64952), (42, 64931), (44, 64919), (48, 64847), (55, 64733), (60, 64694), (62, 64676),

Gene: Veritas\_96 Start: 66920, Stop: 66189, Start Num: 13

Candidate Starts for Veritas\_96:

(9, 67139), (11, 67037), (Start: 13 @66920 has 253 MA's), (Start: 15 @66881 has 2 MA's), (Start: 24 @66767 has 14 MA's), (Start: 28 @66728 has 1 MA's), (40, 66560), (42, 66539), (44, 66527), (48, 66455), (55, 66341), (60, 66302), (62, 66284),

Gene: Vic9\_85 Start: 64144, Stop: 63614, Start Num: 24

Candidate Starts for Vic9\_85:

(3, 64978), (4, 64726), (6, 64546), (10, 64417), (Start: 17 @64222 has 1 MA's), (Start: 24 @64144 has 14 MA's), (26, 64117), (29, 64090), (30, 64081), (35, 64039), (36, 64030), (40, 63934), (44, 63898), (48, 63826), (53, 63730), (54, 63724), (58, 63682), (60, 63670),

Gene: Virapocalypse\_98 Start: 67107, Stop: 66376, Start Num: 13

Candidate Starts for Virapocalypse\_98:

(Start: 13 @67107 has 253 MA's), (Start: 15 @67068 has 2 MA's), (16, 67041), (Start: 24 @66954 has 14 MA's), (Start: 28 @66915 has 1 MA's), (Start: 32 @66873 has 1 MA's), (40, 66747), (42, 66726), (44, 66714), (48, 66642), (55, 66528), (60, 66489), (62, 66471),

Gene: Virgeve\_95 Start: 66725, Stop: 65994, Start Num: 13

Candidate Starts for Virgeve\_95:

(Start: 13 @66725 has 253 MA's), (Start: 15 @66686 has 2 MA's), (16, 66659), (Start: 28 @66533 has 1 MA's), (Start: 32 @66491 has 1 MA's), (40, 66365), (42, 66344), (44, 66332), (48, 66260), (55, 66146), (60, 66107), (62, 66089),

Gene: Vista\_96 Start: 66919, Stop: 66188, Start Num: 13

Candidate Starts for Vista\_96:

(Start: 13 @66919 has 253 MA's), (Start: 15 @66880 has 2 MA's), (16, 66853), (Start: 24 @66766 has 14 MA's), (Start: 28 @66727 has 1 MA's), (Start: 32 @66685 has 1 MA's), (40, 66559), (42, 66538), (44, 66526), (48, 66454), (55, 66340), (60, 66301), (62, 66283),

Gene: Vortex\_95 Start: 67025, Stop: 66294, Start Num: 13

Candidate Starts for Vortex\_95:

(Start: 13 @67025 has 253 MA's), (Start: 15 @66986 has 2 MA's), (16, 66959), (Start: 24 @66872 has 14 MA's), (Start: 28 @66833 has 1 MA's), (Start: 32 @66791 has 1 MA's), (40, 66665), (42, 66644), (44, 66632), (48, 66560), (55, 66446), (60, 66407), (62, 66389),

Gene: Wallhey\_98 Start: 67024, Stop: 66293, Start Num: 13

Candidate Starts for Wallhey\_98:

(Start: 13 @67024 has 253 MA's), (Start: 15 @66985 has 2 MA's), (16, 66958), (Start: 28 @66832 has 1 MA's), (Start: 32 @66790 has 1 MA's), (40, 66664), (42, 66643), (44, 66631), (48, 66559), (55, 66445), (60, 66406), (62, 66388),

Gene: Waterdiva\_98 Start: 67291, Stop: 66560, Start Num: 13

Candidate Starts for Waterdiva\_98:

(Start: 13 @67291 has 253 MA's), (Start: 15 @67252 has 2 MA's), (16, 67225), (Start: 24 @67138 has 14 MA's), (Start: 28 @67099 has 1 MA's), (Start: 32 @67057 has 1 MA's), (40, 66931), (42, 66910), (44, 66898), (48, 66826), (55, 66712), (60, 66673), (62, 66655),

Gene: Weher20\_94 Start: 67363, Stop: 66632, Start Num: 13

Candidate Starts for Weher20\_94:

(Start: 13 @67363 has 253 MA's), (Start: 15 @67324 has 2 MA's), (16, 67297), (Start: 24 @67210 has 14 MA's), (Start: 28 @67171 has 1 MA's), (Start: 32 @67129 has 1 MA's), (40, 67003), (42, 66982), (44, 66970), (48, 66898), (55, 66784), (60, 66745), (62, 66727),

Gene: West99\_84 Start: 63829, Stop: 63251, Start Num: 20

Candidate Starts for West99\_84:

(12, 63958), (Start: 19 @63847 has 17 MA's), (Start: 20 @63829 has 2 MA's), (Start: 24 @63781 has 14 MA's), (26, 63754), (29, 63727), (30, 63718), (35, 63676), (36, 63667), (40, 63571), (44, 63535), (48, 63463), (53, 63367), (54, 63361), (58, 63319), (60, 63307),

Gene: Windsor\_96 Start: 67050, Stop: 66298, Start Num: 13

Candidate Starts for Windsor\_96:

(9, 67269), (11, 67167), (Start: 13 @67050 has 253 MA's), (Start: 15 @67011 has 2 MA's), (Start: 24 @66897 has 14 MA's), (Start: 28 @66858 has 1 MA's), (40, 66690), (42, 66669), (44, 66657), (48, 66585), (55, 66471), (60, 66432), (62, 66414),

Gene: Xavier\_96 Start: 66918, Stop: 66187, Start Num: 13

Candidate Starts for Xavier\_96:

(Start: 13 @66918 has 253 MA's), (Start: 15 @66879 has 2 MA's), (16, 66852), (Start: 24 @66765 has 14 MA's), (Start: 28 @66726 has 1 MA's), (Start: 32 @66684 has 1 MA's), (40, 66558), (42, 66537), (44, 66525), (48, 66453), (55, 66339), (60, 66300), (62, 66282),

Gene: Yoshand\_98 Start: 67143, Stop: 66412, Start Num: 13

Candidate Starts for Yoshand\_98:

(Start: 13 @67143 has 253 MA's), (Start: 15 @67104 has 2 MA's), (16, 67077), (Start: 24 @66990 has 14 MA's), (Start: 28 @66951 has 1 MA's), (Start: 32 @66909 has 1 MA's), (40, 66783), (42, 66762), (44, 66750), (48, 66678), (55, 66564), (60, 66525), (62, 66507),

Gene: YouGoGlencoco\_97 Start: 67033, Stop: 66302, Start Num: 13

Candidate Starts for YouGoGlencoco\_97:

(Start: 13 @67033 has 253 MA's), (Start: 15 @66994 has 2 MA's), (16, 66967), (Start: 24 @66880 has 14 MA's), (Start: 28 @66841 has 1 MA's), (Start: 32 @66799 has 1 MA's), (40, 66673), (42, 66652), (44, 66640), (48, 66568), (55, 66454), (60, 66415), (62, 66397),

Gene: Zaider\_98 Start: 67408, Stop: 66677, Start Num: 13

Candidate Starts for Zaider\_98:

(Start: 13 @67408 has 253 MA's), (Start: 15 @67369 has 2 MA's), (16, 67342), (Start: 24 @67255 has 14 MA's), (Start: 28 @67216 has 1 MA's), (Start: 32 @67174 has 1 MA's), (40, 67048), (42, 67027), (44, 67015), (48, 66943), (55, 66829), (60, 66790), (62, 66772),

Gene: Zelda\_97 Start: 67364, Stop: 66633, Start Num: 13

Candidate Starts for Zelda\_97:

(Start: 13 @67364 has 253 MA's), (Start: 15 @67325 has 2 MA's), (16, 67298), (Start: 24 @67211 has 14 MA's), (Start: 28 @67172 has 1 MA's), (Start: 32 @67130 has 1 MA's), (40, 67004), (42, 66983), (44, 66971), (48, 66899), (55, 66785), (60, 66746), (62, 66728),

Gene: Zenteno07\_105 Start: 69900, Stop: 69328, Start Num: 23

Candidate Starts for Zenteno07\_105:

(8, 70275), (Start: 23 @69900 has 1 MA's), (Start: 28 @69834 has 1 MA's), (Start: 32 @69792 has 1 MA's), (36, 69762), (44, 69633), (46, 69615), (48, 69558), (49, 69549), (60, 69399), (61, 69384),

Gene: Zonia\_97 Start: 67474, Stop: 66743, Start Num: 13

Candidate Starts for Zonia\_97:

(Start: 13 @67474 has 253 MA's), (Start: 15 @67435 has 2 MA's), (16, 67408), (Start: 28 @67282 has 1 MA's), (Start: 32 @67240 has 1 MA's), (40, 67114), (42, 67093), (44, 67081), (48, 67009), (55, 66895), (60, 66856), (62, 66838),