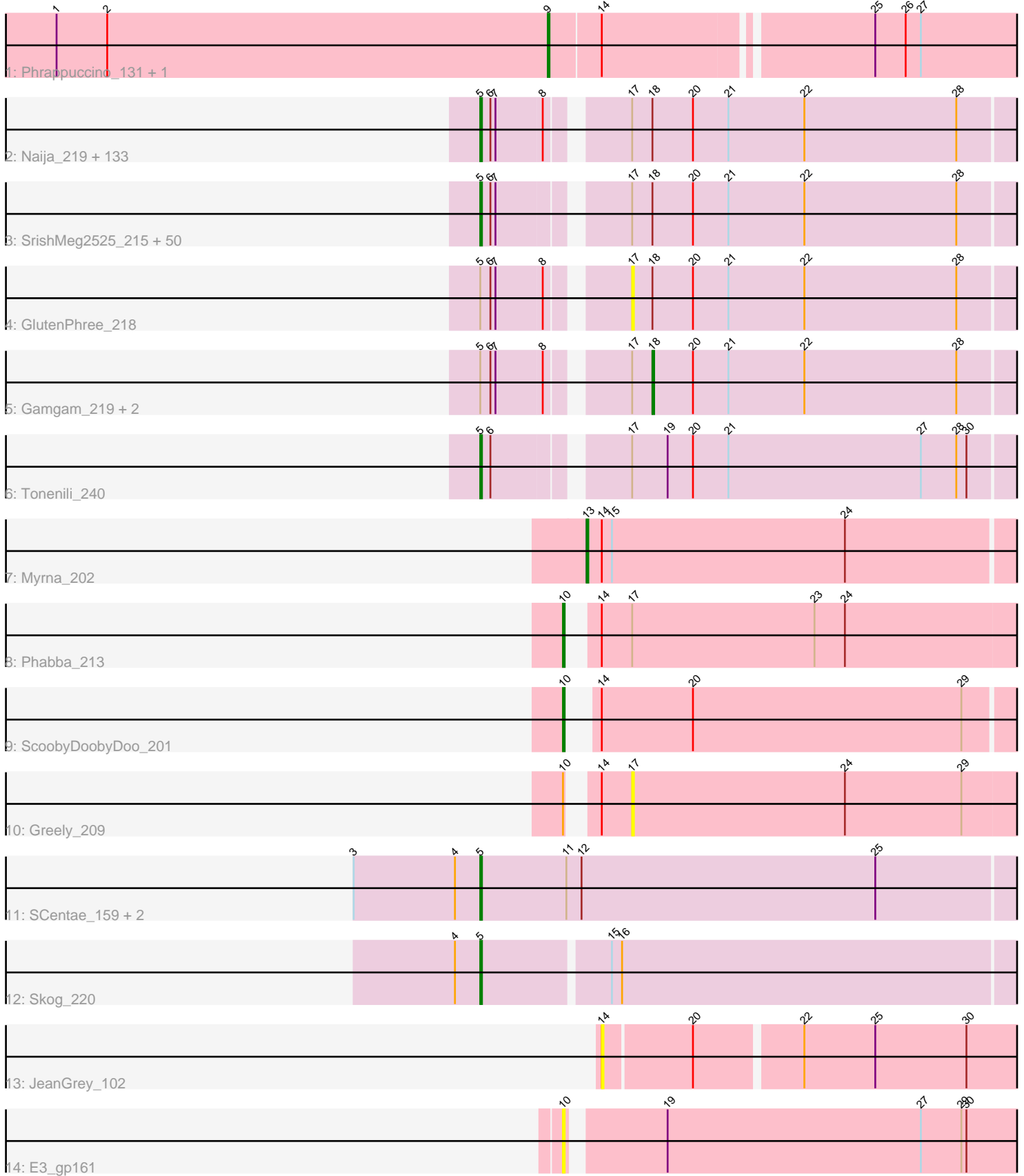


Pham 200004



Note: Tracks are now grouped by subcluster and scaled. Switching in subcluster is indicated by changes in track color. Track scale is now set by default to display the region 30 bp upstream of start 1 to 30 bp downstream of the last possible start. If this default region is judged to be packed too tightly with annotated starts, the track will be further scaled to only show that region of the ORF with annotated starts. This action will be indicated by adding "Zoomed" to the title. For starts, yellow indicates the location of called starts comprised solely of Glimmer/GeneMark auto-annotations, green indicates the location of called starts with at least 1 manual gene annotation.

Pham 200004 Report

This analysis was run 01/18/25 on database version 583.

Pham number 200004 has 202 members, 23 are drafts.

Phages represented in each track:

- Track 1 : Phrappuccino_131, Settecandela_131
- Track 2 : Naija_219, IkeLoa_210, Rizal_210, Drazdys_216, Ghost_218, Tainan_219, Pio_226, I3_228, Essence_215, YemiJoy2021_219, Spec_213, LordLeafolot_220, ShiaLabeouf_215, ValleyTerrace_219, Ngannou_215, Koguma_217, CharlieB_212, Grasshills_226, Catera_210, ErnieJ_211, ArcherS7_218, CindyLou_219, Iota_213, Delylah_220, BadAgartude_212, DTDevon_220, Pivoine_219, Domi_212, Patter_219, Blackdragon_213, BeanWater_210, EasyJones_221, Cali_211, LolaVinca_216, Basquiat_215, Capablanca_223, Bigswole_223, Erdmann_219, Gizmo_224, Issimir_211, Melpomini_213, Delilah_216, Latch_218, Lukilu_209, Maby2021_218, Amataga_219, McGee_217, Momo_219, Grungle_202, Dietrick_207, ChickenPhender_214, Mangeria_219, Shnickers_216, Ading_219, Burrough_220, Derek_215, EggyFarm_227, Zeenon_220, Astraea_212, Quasimodo_220, Sprinklers_216, TinyTim_216, SmallFry_218, Phusco_216, Ronan_214, Fludd_218, Jaygup_214, Concombre_223, FrayBell_221, Jedediah_218, Shaqnato_209, Bread_213, Atlantean_218, BananaFence_215, Specks_222, QBert_210, Colt_209, Trinitium_214, LifeSavor_217, Rahel_219, ET08_206, Phlegm_222, Sauce_214, ScottMcG_212, Napoleon13_215, Chargie21_215, Nappy_219, Demodog_224, Blackbrain_215, Teardrop_215, Bangla1971_218, Blubba_207, JPickles_214, Kboogie_222, LRRHood_211, Lethe_220, Phox_219, JulietS_211, Morizzled23_215, Jemmno_217, DirtMonster_211, InigoMontoya_221, Turret_211, Cane17_209, Dandelion_226, Shrimp_220, EmmaElysia_222, Pleione_222, Bxz1_208, Wally_216, Breeniome_217, Babyland_221, RoMag_213, Yassified_215, Adlitam_217, Nidhogg_219, Guwapp_213, Janiyra_221, Yucca_218, StubbySaigey_223, Gabriel_221, Halldule_211, Norm_218, Littleton_221, SilverDipper_222, Darko_217, JigglyPuff_225, Tortoise16_216, Cactojaque_213, Audrick_220, InterFolia_221, Tyke_216, BigCity_227, Spud_212
- Track 3 : SrishMeg2525_215, Khaleesi_217, Loanshark_215, Stubby_202, SVoro_215, Bipolarisk_216, HyRo_206, Jessibeth14_218, Jezreel_215, ChaylaJr_216, Sebata_219, Bonray_220, Ava3_217, Ewok_217, Shelob_219, MoMoMixon_216, Mikro_214, Roots515_220, Pinkcreek_202, ZygoTaiga_215, Rabinovish_211, BackyardAgain_214, Shifa_195, Alice_205, JayJay_216, JustHall_212, Pier_219, YoungMoneyMata_217, DrPhinkDaddy_215, ParkTD_217, Flabslab_213, MikeLiesIn_220, Megamind_215, PurduePete_218, Willis_219, Izajani_216, Lee7_218, NuevoMundo_221, Asterius_214, Zalkecks_217, Salacia_218, Kamryn_217, LinStu_217, Caravan_209, Daffodil_223, NoodleTree_224, McWolfish_215, FudgeTart_213, FoxtrotP1_216, NedWong_217, EmToTheThree_218

- Track 4 : GlutenPhree_218
- Track 5 : Gamgam_219, StephanieG_214, Chomp_218
- Track 6 : Tonenili_240
- Track 7 : Myrna_202
- Track 8 : Phabba_213
- Track 9 : ScoobyDoobyDoo_201
- Track 10 : Greely_209
- Track 11 : SCentae_159, Pupper_160, CherryTomatoes_161
- Track 12 : Skog_220
- Track 13 : JeanGrey_102
- Track 14 : E3_gp161

Summary of Final Annotations (See graph section above for start numbers):

The start number called the most often in the published annotations is 5, it was called in 171 of the 179 non-draft genes in the pham.

Genes that call this "Most Annotated" start:

- Ading_219, Adlitam_217, Alice_205, Amataga_219, ArcherS7_218, Asterius_214, Astraea_212, Atlantean_218, Audrick_220, Ava3_217, Babyland_221, BackyardAgain_214, BadAgartude_212, BananaFence_215, Bangla1971_218, Basquiat_215, BeanWater_210, BigCity_227, Bigswole_223, Bipolarisk_216, Blackbrain_215, Blackdragon_213, Blubba_207, Bonray_220, Bread_213, Breeniome_217, Burrough_220, Bxz1_208, Cactojaque_213, Cali_211, Cane17_209, Capablanca_223, Caravan_209, Catera_210, Chargie21_215, CharlieB_212, ChaylaJr_216, CherryTomatoes_161, ChickenPhender_214, CindyLou_219, Colt_209, Concombre_223, DTDevon_220, Daffodil_223, Dandelion_226, Darko_217, Delilah_216, Delylah_220, Demodog_224, Derek_215, Dietrick_207, DirtMonster_211, Domi_212, DrPhinkDaddy_215, Drazdys_216, ET08_206, EasyJones_221, EggyFarm_227, EmToTheThree_218, EmmaElysia_222, Erdmann_219, ErnieJ_211, Essence_215, Ewok_217, Flabslab_213, Fludd_218, FoxtrotP1_216, FrayBell_221, FudgeTart_213, Gabriel_221, Ghost_218, Gizmo_224, Grasshills_226, Grungle_202, Guwapp_213, Halldule_211, HyRo_206, I3_228, IkeLoa_210, InigoMontoya_221, InterFolia_221, Iota_213, Issimir_211, Izajani_216, JPickles_214, Janiyra_221, JayJay_216, Jaygup_214, Jedediah_218, Jemmno_217, Jessibeth14_218, Jezreel_215, JigglyPuff_225, JulietS_211, JustHall_212, Kamryn_217, Kboogie_222, Khaleesi_217, Koguma_217, LRRHood_211, Latch_218, Lee7_218, Lethe_220, LifeSavor_217, LinStu_217, Littleton_221, Loanshark_215, LolaVinca_216, LordLeafolot_220, Lukilu_209, Maby2021_218, Mangeria_219, McGee_217, McWolfish_215, Megamind_215, Melpomini_213, MikeLiesIn_220, Mikro_214, MoMoMixon_216, Momo_219, Morizzled23_215, Naija_219, Napoleon13_215, Nappy_219, NedWong_217, Ngannou_215, Nidhogg_219, NoodleTree_224, Norm_218, NuevoMundo_221, ParkTD_217, Patter_219, Phlegm_222, Phox_219, Phusco_216, Pier_219, Pinkcreek_202, Pio_226, Pivoine_219, Pleione_222, Pupper_160, PurduePete_218, QBert_210, Quasimodo_220, Rabinovish_211, Rahel_219, Rizal_210, RoMag_213, Ronan_214, Roots515_220, SCentae_159, SVoro_215, Salacia_218, Sauce_214, ScottMcG_212, Sebata_219, Shaqnato_209, Shelob_219, ShiaLabeouf_215, Shifa_195, Shnickers_216, Shrimp_220, SilverDipper_222, Skog_220, SmallFry_218, Spec_213, Specks_222, Sprinklers_216, Spud_212, SrishMeg2525_215, StubbySaigey_223,

Stubby_202, Tainan_219, Teardrop_215, TinyTim_216, Tonenili_240, Tortoise16_216, Trinitium_214, Turret_211, Tyke_216, ValleyTerrace_219, Wally_216, Willis_219, Yassified_215, YemiJoy2021_219, YoungMoneyMata_217, Yucca_218, Zalkecks_217, Zeenon_220, ZygoTaiga_215,

Genes that have the "Most Annotated" start but do not call it:

- Chomp_218, Gamgam_219, GlutenPhree_218, StephanieG_214,

Genes that do not have the "Most Annotated" start:

- E3_gp161, Greely_209, JeanGrey_102, Myrna_202, Phabba_213, Phrappuccino_131, ScoobyDoobyDoo_201, Settecandela_131,

Summary by start number:

Start 5:

- Found in 194 of 202 (96.0%) of genes in pham
- Manual Annotations of this start: 171 of 179
- Called 97.9% of time when present
- Phage (with cluster) where this start called: Ading_219 (C1), Adlitam_217 (C1), Alice_205 (C1), Amataga_219 (C1), ArcherS7_218 (C1), Asterius_214 (C1), Astraea_212 (C1), Atlantean_218 (C1), Audrick_220 (C1), Ava3_217 (C1), Babyland_221 (C1), BackyardAgain_214 (C1), BadAgartude_212 (C1), BananaFence_215 (C1), Bangla1971_218 (C1), Basquiat_215 (C1), BeanWater_210 (C1), BigCity_227 (C1), Bigswole_223 (C1), Bipolarisk_216 (C1), Blackbrain_215 (C1), Blackdragon_213 (C1), Blubba_207 (C1), Bonray_220 (C1), Bread_213 (C1), Breeniome_217 (C1), Burrough_220 (C1), Bxz1_208 (C1), Cactojaque_213 (C1), Cali_211 (C1), Cane17_209 (C1), Capablanca_223 (C1), Caravan_209 (C1), Catera_210 (C1), Chargie21_215 (C1), CharlieB_212 (C1), ChaylaJr_216 (C1), CherryTomatoes_161 (DO), ChickenPhender_214 (C1), CindyLou_219 (C1), Colt_209 (C1), Concombre_223 (C1), DTDevon_220 (C1), Daffodil_223 (C1), Dandelion_226 (C1), Darko_217 (C1), Delilah_216 (C1), Delylah_220 (C1), Demodog_224 (C1), Derek_215 (C1), Dietrick_207 (C1), DirtMonster_211 (C1), Domi_212 (C1), DrPhinkDaddy_215 (C1), Drazdys_216 (C1), ET08_206 (C1), EasyJones_221 (C1), EggyFarm_227 (C1), EmToTheThree_218 (C1), EmmaElysia_222 (C1), Erdmann_219 (C1), ErnieJ_211 (C1), Essence_215 (C1), Ewok_217 (C1), Flabslab_213 (C1), Fludd_218 (C1), FoxtrotP1_216 (C1), FrayBell_221 (C1), FudgeTart_213 (C1), Gabriel_221 (C1), Ghost_218 (C1), Gizmo_224 (C1), Grasshills_226 (C1), Grungle_202 (C1), Guwapp_213 (C1), Halldule_211 (C1), HyRo_206 (C1), I3_228 (C1), IkeLoa_210 (C1), InigoMontoya_221 (C1), InterFolia_221 (C1), Iota_213 (C1), Issimir_211 (C1), Izajani_216 (C1), JPickles_214 (C1), Janiyra_221 (C1), JayJay_216 (C1), Jaygup_214 (C1), Jedediah_218 (C1), Jemmno_217 (C1), Jessibeth14_218 (C1), Jezreel_215 (C1), JigglyPuff_225 (C1), JulietS_211 (C1), JustHall_212 (C1), Kamryn_217 (C1), Kboogie_222 (C1), Khaleesi_217 (C1), Koguma_217 (C1), LRRHood_211 (C1), Latch_218 (C1), Lee7_218 (C1), Lethe_220 (C1), LifeSavor_217 (C1), LinStu_217 (C1), Littleton_221 (C1), Loanshark_215 (C1), LolaVinca_216 (C1), LordLeafolot_220 (C1), Lukilu_209 (C1), Maby2021_218 (C1), Mangeria_219 (C1), McGee_217 (C1), McWolfish_215 (C1), Megamind_215 (C1), Melpomini_213 (C1), MikeLiesIn_220 (C1), Mikro_214 (C1), MoMoMixon_216 (C1), Momo_219 (C1), Morizzled23_215 (C1), Naija_219 (C1), Napoleon13_215 (C1), Nappy_219 (C1), NedWong_217 (C1), Ngannou_215 (C1), Nidhogg_219 (C1), NoodleTree_224 (C1), Norm_218 (C1), NuevoMundo_221 (C1), ParkTD_217 (C1), Patter_219 (C1), Phlegm_222 (C1), Phox_219 (C1), Phusco_216 (C1), Pier_219 (C1), Pinkcreek_202

(C1), Pio_226 (C1), Pivoine_219 (C1), Pleione_222 (C1), Pupper_160 (DO), PurduePete_218 (C1), QBert_210 (C1), Quasimodo_220 (C1), Rabinovich_211 (C1), Rahel_219 (C1), Rizal_210 (C1), RoMag_213 (C1), Ronan_214 (C1), Roots515_220 (C1), SCentae_159 (DO), SVoro_215 (C1), Salacia_218 (C1), Sauce_214 (C1), ScottMcG_212 (C1), Sebata_219 (C1), Shaqnato_209 (C1), Shelob_219 (C1), ShiaLabeouf_215 (C1), Shifa_195 (C1), Shnickers_216 (C1), Shrimp_220 (C1), SilverDipper_222 (C1), Skog_220 (DO), SmallFry_218 (C1), Spec_213 (C1), Specks_222 (C1), Sprinklers_216 (C1), Spud_212 (C1), SrishMeg2525_215 (C1), StubbySaigey_223 (C1), Stubby_202 (C1), Tainan_219 (C1), Teardrop_215 (C1), TinyTim_216 (C1), Tonerili_240 (C1), Tortoise16_216 (C1), Trinitium_214 (C1), Turret_211 (C1), Tyke_216 (C1), ValleyTerrace_219 (C1), Wally_216 (C1), Willis_219 (C1), Yassified_215 (C1), YemiJoy2021_219 (C1), YoungMoneyMata_217 (C1), Yucca_218 (C1), Zalkecks_217 (C1), Zeenon_220 (C1), ZygoTaiga_215 (C1),

Start 9:

- Found in 2 of 202 (1.0%) of genes in pham
- Manual Annotations of this start: 2 of 179
- Called 100.0% of time when present
- Phage (with cluster) where this start called: Phrappuccino_131 (AA), Settecandela_131 (AA),

Start 10:

- Found in 4 of 202 (2.0%) of genes in pham
- Manual Annotations of this start: 2 of 179
- Called 75.0% of time when present
- Phage (with cluster) where this start called: E3_gp161 (singleton), Phabba_213 (C2), ScoobyDoobyDoo_201 (C2),

Start 13:

- Found in 1 of 202 (0.5%) of genes in pham
- Manual Annotations of this start: 1 of 179
- Called 100.0% of time when present
- Phage (with cluster) where this start called: Myrna_202 (C2),

Start 14:

- Found in 7 of 202 (3.5%) of genes in pham
- No Manual Annotations of this start.
- Called 14.3% of time when present
- Phage (with cluster) where this start called: JeanGrey_102 (singleton),

Start 17:

- Found in 192 of 202 (95.0%) of genes in pham
- No Manual Annotations of this start.
- Called 1.0% of time when present
- Phage (with cluster) where this start called: GlutenPhree_218 (C1), Greely_209 (C2),

Start 18:

- Found in 189 of 202 (93.6%) of genes in pham
- Manual Annotations of this start: 3 of 179
- Called 1.6% of time when present
- Phage (with cluster) where this start called: Chomp_218 (C1), Gamgam_219 (C1), StephanieG_214 (C1),

Summary by clusters:

There are 5 clusters represented in this pham: AA, C2, C1, singleton, DO,

Info for manual annotations of cluster AA:

- Start number 9 was manually annotated 2 times for cluster AA.

Info for manual annotations of cluster C1:

- Start number 5 was manually annotated 167 times for cluster C1.
- Start number 18 was manually annotated 3 times for cluster C1.

Info for manual annotations of cluster C2:

- Start number 10 was manually annotated 2 times for cluster C2.
- Start number 13 was manually annotated 1 time for cluster C2.

Info for manual annotations of cluster DO:

- Start number 5 was manually annotated 4 times for cluster DO.

Gene Information:

Gene: Ading_219 Start: 123192, Stop: 123506, Start Num: 5

Candidate Starts for Ading_219:

(Start: 5 @123192 has 171 MA's), (6, 123198), (7, 123201), (8, 123228), (17, 123267), (Start: 18 @123279 has 3 MA's), (20, 123303), (21, 123324), (22, 123369), (28, 123459),

Gene: Adlitam_217 Start: 121796, Stop: 122110, Start Num: 5

Candidate Starts for Adlitam_217:

(Start: 5 @121796 has 171 MA's), (6, 121802), (7, 121805), (8, 121832), (17, 121871), (Start: 18 @121883 has 3 MA's), (20, 121907), (21, 121928), (22, 121973), (28, 122063),

Gene: Alice_205 Start: 120771, Stop: 121085, Start Num: 5

Candidate Starts for Alice_205:

(Start: 5 @120771 has 171 MA's), (6, 120777), (7, 120780), (17, 120846), (Start: 18 @120858 has 3 MA's), (20, 120882), (21, 120903), (22, 120948), (28, 121038),

Gene: Amataga_219 Start: 121608, Stop: 121922, Start Num: 5

Candidate Starts for Amataga_219:

(Start: 5 @121608 has 171 MA's), (6, 121614), (7, 121617), (8, 121644), (17, 121683), (Start: 18 @121695 has 3 MA's), (20, 121719), (21, 121740), (22, 121785), (28, 121875),

Gene: ArcherS7_218 Start: 122650, Stop: 122964, Start Num: 5

Candidate Starts for ArcherS7_218:

(Start: 5 @122650 has 171 MA's), (6, 122656), (7, 122659), (8, 122686), (17, 122725), (Start: 18 @122737 has 3 MA's), (20, 122761), (21, 122782), (22, 122827), (28, 122917),

Gene: Asterius_214 Start: 122017, Stop: 122331, Start Num: 5

Candidate Starts for Asterius_214:

(Start: 5 @122017 has 171 MA's), (6, 122023), (7, 122026), (17, 122092), (Start: 18 @122104 has 3 MA's), (20, 122128), (21, 122149), (22, 122194), (28, 122284),

Gene: Astraea_212 Start: 121212, Stop: 121526, Start Num: 5

Candidate Starts for Astraea_212:

(Start: 5 @121212 has 171 MA's), (6, 121218), (7, 121221), (8, 121248), (17, 121287), (Start: 18 @121299 has 3 MA's), (20, 121323), (21, 121344), (22, 121389), (28, 121479),

Gene: Atlantean_218 Start: 121608, Stop: 121922, Start Num: 5

Candidate Starts for Atlantean_218:

(Start: 5 @121608 has 171 MA's), (6, 121614), (7, 121617), (8, 121644), (17, 121683), (Start: 18 @121695 has 3 MA's), (20, 121719), (21, 121740), (22, 121785), (28, 121875),

Gene: Audrick_220 Start: 121498, Stop: 121812, Start Num: 5

Candidate Starts for Audrick_220:

(Start: 5 @121498 has 171 MA's), (6, 121504), (7, 121507), (8, 121534), (17, 121573), (Start: 18 @121585 has 3 MA's), (20, 121609), (21, 121630), (22, 121675), (28, 121765),

Gene: Ava3_217 Start: 122042, Stop: 122356, Start Num: 5

Candidate Starts for Ava3_217:

(Start: 5 @122042 has 171 MA's), (6, 122048), (7, 122051), (17, 122117), (Start: 18 @122129 has 3 MA's), (20, 122153), (21, 122174), (22, 122219), (28, 122309),

Gene: Babyland_221 Start: 122385, Stop: 122699, Start Num: 5

Candidate Starts for Babyland_221:

(Start: 5 @122385 has 171 MA's), (6, 122391), (7, 122394), (8, 122421), (17, 122460), (Start: 18 @122472 has 3 MA's), (20, 122496), (21, 122517), (22, 122562), (28, 122652),

Gene: BackyardAgain_214 Start: 119573, Stop: 119887, Start Num: 5

Candidate Starts for BackyardAgain_214:

(Start: 5 @119573 has 171 MA's), (6, 119579), (7, 119582), (17, 119648), (Start: 18 @119660 has 3 MA's), (20, 119684), (21, 119705), (22, 119750), (28, 119840),

Gene: BadAgartude_212 Start: 121710, Stop: 122024, Start Num: 5

Candidate Starts for BadAgartude_212:

(Start: 5 @121710 has 171 MA's), (6, 121716), (7, 121719), (8, 121746), (17, 121785), (Start: 18 @121797 has 3 MA's), (20, 121821), (21, 121842), (22, 121887), (28, 121977),

Gene: BananaFence_215 Start: 121841, Stop: 122155, Start Num: 5

Candidate Starts for BananaFence_215:

(Start: 5 @121841 has 171 MA's), (6, 121847), (7, 121850), (8, 121877), (17, 121916), (Start: 18 @121928 has 3 MA's), (20, 121952), (21, 121973), (22, 122018), (28, 122108),

Gene: Bangla1971_218 Start: 121614, Stop: 121928, Start Num: 5

Candidate Starts for Bangla1971_218:

(Start: 5 @121614 has 171 MA's), (6, 121620), (7, 121623), (8, 121650), (17, 121689), (Start: 18 @121701 has 3 MA's), (20, 121725), (21, 121746), (22, 121791), (28, 121881),

Gene: Basquiat_215 Start: 120127, Stop: 120441, Start Num: 5

Candidate Starts for Basquiat_215:

(Start: 5 @120127 has 171 MA's), (6, 120133), (7, 120136), (8, 120163), (17, 120202), (Start: 18 @120214 has 3 MA's), (20, 120238), (21, 120259), (22, 120304), (28, 120394),

Gene: BeanWater_210 Start: 120653, Stop: 120967, Start Num: 5

Candidate Starts for BeanWater_210:

(Start: 5 @120653 has 171 MA's), (6, 120659), (7, 120662), (8, 120689), (17, 120728), (Start: 18 @120740 has 3 MA's), (20, 120764), (21, 120785), (22, 120830), (28, 120920),

Gene: BigCity_227 Start: 124224, Stop: 124538, Start Num: 5

Candidate Starts for BigCity_227:

(Start: 5 @124224 has 171 MA's), (6, 124230), (7, 124233), (8, 124260), (17, 124299), (Start: 18 @124311 has 3 MA's), (20, 124335), (21, 124356), (22, 124401), (28, 124491),

Gene: Bigswole_223 Start: 124078, Stop: 124392, Start Num: 5

Candidate Starts for Bigswole_223:

(Start: 5 @124078 has 171 MA's), (6, 124084), (7, 124087), (8, 124114), (17, 124153), (Start: 18 @124165 has 3 MA's), (20, 124189), (21, 124210), (22, 124255), (28, 124345),

Gene: Bipolarisk_216 Start: 122311, Stop: 122625, Start Num: 5

Candidate Starts for Bipolarisk_216:

(Start: 5 @122311 has 171 MA's), (6, 122317), (7, 122320), (17, 122386), (Start: 18 @122398 has 3 MA's), (20, 122422), (21, 122443), (22, 122488), (28, 122578),

Gene: Blackbrain_215 Start: 121212, Stop: 121526, Start Num: 5

Candidate Starts for Blackbrain_215:

(Start: 5 @121212 has 171 MA's), (6, 121218), (7, 121221), (8, 121248), (17, 121287), (Start: 18 @121299 has 3 MA's), (20, 121323), (21, 121344), (22, 121389), (28, 121479),

Gene: Blackdragon_213 Start: 121944, Stop: 122258, Start Num: 5

Candidate Starts for Blackdragon_213:

(Start: 5 @121944 has 171 MA's), (6, 121950), (7, 121953), (8, 121980), (17, 122019), (Start: 18 @122031 has 3 MA's), (20, 122055), (21, 122076), (22, 122121), (28, 122211),

Gene: Blubba_207 Start: 125293, Stop: 125607, Start Num: 5

Candidate Starts for Blubba_207:

(Start: 5 @125293 has 171 MA's), (6, 125299), (7, 125302), (8, 125329), (17, 125368), (Start: 18 @125380 has 3 MA's), (20, 125404), (21, 125425), (22, 125470), (28, 125560),

Gene: Bonray_220 Start: 123713, Stop: 124027, Start Num: 5

Candidate Starts for Bonray_220:

(Start: 5 @123713 has 171 MA's), (6, 123719), (7, 123722), (17, 123788), (Start: 18 @123800 has 3 MA's), (20, 123824), (21, 123845), (22, 123890), (28, 123980),

Gene: Bread_213 Start: 121711, Stop: 122025, Start Num: 5

Candidate Starts for Bread_213:

(Start: 5 @121711 has 171 MA's), (6, 121717), (7, 121720), (8, 121747), (17, 121786), (Start: 18 @121798 has 3 MA's), (20, 121822), (21, 121843), (22, 121888), (28, 121978),

Gene: Breeniome_217 Start: 121165, Stop: 121479, Start Num: 5

Candidate Starts for Breeniome_217:

(Start: 5 @121165 has 171 MA's), (6, 121171), (7, 121174), (8, 121201), (17, 121240), (Start: 18 @121252 has 3 MA's), (20, 121276), (21, 121297), (22, 121342), (28, 121432),

Gene: Burrough_220 Start: 123481, Stop: 123795, Start Num: 5

Candidate Starts for Burrough_220:

(Start: 5 @123481 has 171 MA's), (6, 123487), (7, 123490), (8, 123517), (17, 123556), (Start: 18 @123568 has 3 MA's), (20, 123592), (21, 123613), (22, 123658), (28, 123748),

Gene: Bxz1_208 Start: 123687, Stop: 124001, Start Num: 5

Candidate Starts for Bxz1_208:

(Start: 5 @123687 has 171 MA's), (6, 123693), (7, 123696), (8, 123723), (17, 123762), (Start: 18 @123774 has 3 MA's), (20, 123798), (21, 123819), (22, 123864), (28, 123954),

Gene: Cactojaque_213 Start: 120147, Stop: 120461, Start Num: 5

Candidate Starts for Cactojaque_213:

(Start: 5 @120147 has 171 MA's), (6, 120153), (7, 120156), (8, 120183), (17, 120222), (Start: 18 @120234 has 3 MA's), (20, 120258), (21, 120279), (22, 120324), (28, 120414),

Gene: Cali_211 Start: 122094, Stop: 122408, Start Num: 5

Candidate Starts for Cali_211:

(Start: 5 @122094 has 171 MA's), (6, 122100), (7, 122103), (8, 122130), (17, 122169), (Start: 18 @122181 has 3 MA's), (20, 122205), (21, 122226), (22, 122271), (28, 122361),

Gene: Cane17_209 Start: 125702, Stop: 126016, Start Num: 5

Candidate Starts for Cane17_209:

(Start: 5 @125702 has 171 MA's), (6, 125708), (7, 125711), (8, 125738), (17, 125777), (Start: 18 @125789 has 3 MA's), (20, 125813), (21, 125834), (22, 125879), (28, 125969),

Gene: Capablanca_223 Start: 124308, Stop: 124622, Start Num: 5

Candidate Starts for Capablanca_223:

(Start: 5 @124308 has 171 MA's), (6, 124314), (7, 124317), (8, 124344), (17, 124383), (Start: 18 @124395 has 3 MA's), (20, 124419), (21, 124440), (22, 124485), (28, 124575),

Gene: Caravan_209 Start: 122428, Stop: 122742, Start Num: 5

Candidate Starts for Caravan_209:

(Start: 5 @122428 has 171 MA's), (6, 122434), (7, 122437), (17, 122503), (Start: 18 @122515 has 3 MA's), (20, 122539), (21, 122560), (22, 122605), (28, 122695),

Gene: Catera_210 Start: 120821, Stop: 121135, Start Num: 5

Candidate Starts for Catera_210:

(Start: 5 @120821 has 171 MA's), (6, 120827), (7, 120830), (8, 120857), (17, 120896), (Start: 18 @120908 has 3 MA's), (20, 120932), (21, 120953), (22, 120998), (28, 121088),

Gene: Chargie21_215 Start: 120127, Stop: 120441, Start Num: 5

Candidate Starts for Chargie21_215:

(Start: 5 @120127 has 171 MA's), (6, 120133), (7, 120136), (8, 120163), (17, 120202), (Start: 18 @120214 has 3 MA's), (20, 120238), (21, 120259), (22, 120304), (28, 120394),

Gene: CharlieB_212 Start: 121848, Stop: 122162, Start Num: 5

Candidate Starts for CharlieB_212:

(Start: 5 @121848 has 171 MA's), (6, 121854), (7, 121857), (8, 121884), (17, 121923), (Start: 18 @121935 has 3 MA's), (20, 121959), (21, 121980), (22, 122025), (28, 122115),

Gene: ChaylaJr_216 Start: 120827, Stop: 121141, Start Num: 5

Candidate Starts for ChaylaJr_216:

(Start: 5 @120827 has 171 MA's), (6, 120833), (7, 120836), (17, 120902), (Start: 18 @120914 has 3 MA's), (20, 120938), (21, 120959), (22, 121004), (28, 121094),

Gene: CherryTomatoes_161 Start: 113558, Stop: 113884, Start Num: 5

Candidate Starts for CherryTomatoes_161:

(3, 113483), (4, 113543), (Start: 5 @113558 has 171 MA's), (11, 113609), (12, 113618), (25, 113792),

Gene: ChickenPhender_214 Start: 120274, Stop: 120588, Start Num: 5

Candidate Starts for ChickenPhender_214:

(Start: 5 @120274 has 171 MA's), (6, 120280), (7, 120283), (8, 120310), (17, 120349), (Start: 18 @120361 has 3 MA's), (20, 120385), (21, 120406), (22, 120451), (28, 120541),

Gene: Chomp_218 Start: 122984, Stop: 123211, Start Num: 18

Candidate Starts for Chomp_218:

(Start: 5 @122897 has 171 MA's), (6, 122903), (7, 122906), (8, 122933), (17, 122972), (Start: 18 @122984 has 3 MA's), (20, 123008), (21, 123029), (22, 123074), (28, 123164),

Gene: CindyLou_219 Start: 123157, Stop: 123471, Start Num: 5

Candidate Starts for CindyLou_219:

(Start: 5 @123157 has 171 MA's), (6, 123163), (7, 123166), (8, 123193), (17, 123232), (Start: 18 @123244 has 3 MA's), (20, 123268), (21, 123289), (22, 123334), (28, 123424),

Gene: Colt_209 Start: 124933, Stop: 125247, Start Num: 5

Candidate Starts for Colt_209:

(Start: 5 @124933 has 171 MA's), (6, 124939), (7, 124942), (8, 124969), (17, 125008), (Start: 18 @125020 has 3 MA's), (20, 125044), (21, 125065), (22, 125110), (28, 125200),

Gene: Concombre_223 Start: 123767, Stop: 124081, Start Num: 5

Candidate Starts for Concombre_223:

(Start: 5 @123767 has 171 MA's), (6, 123773), (7, 123776), (8, 123803), (17, 123842), (Start: 18 @123854 has 3 MA's), (20, 123878), (21, 123899), (22, 123944), (28, 124034),

Gene: DTDevon_220 Start: 123646, Stop: 123960, Start Num: 5

Candidate Starts for DTDevon_220:

(Start: 5 @123646 has 171 MA's), (6, 123652), (7, 123655), (8, 123682), (17, 123721), (Start: 18 @123733 has 3 MA's), (20, 123757), (21, 123778), (22, 123823), (28, 123913),

Gene: Daffodil_223 Start: 122611, Stop: 122925, Start Num: 5

Candidate Starts for Daffodil_223:

(Start: 5 @122611 has 171 MA's), (6, 122617), (7, 122620), (17, 122686), (Start: 18 @122698 has 3 MA's), (20, 122722), (21, 122743), (22, 122788), (28, 122878),

Gene: Dandelion_226 Start: 125251, Stop: 125565, Start Num: 5

Candidate Starts for Dandelion_226:

(Start: 5 @125251 has 171 MA's), (6, 125257), (7, 125260), (8, 125287), (17, 125326), (Start: 18 @125338 has 3 MA's), (20, 125362), (21, 125383), (22, 125428), (28, 125518),

Gene: Darko_217 Start: 121845, Stop: 122159, Start Num: 5

Candidate Starts for Darko_217:

(Start: 5 @121845 has 171 MA's), (6, 121851), (7, 121854), (8, 121881), (17, 121920), (Start: 18 @121932 has 3 MA's), (20, 121956), (21, 121977), (22, 122022), (28, 122112),

Gene: Delilah_216 Start: 122729, Stop: 123043, Start Num: 5

Candidate Starts for Delilah_216:

(Start: 5 @122729 has 171 MA's), (6, 122735), (7, 122738), (8, 122765), (17, 122804), (Start: 18 @122816 has 3 MA's), (20, 122840), (21, 122861), (22, 122906), (28, 122996),

Gene: Delylah_220 Start: 123018, Stop: 123332, Start Num: 5

Candidate Starts for Delylah_220:

(Start: 5 @123018 has 171 MA's), (6, 123024), (7, 123027), (8, 123054), (17, 123093), (Start: 18 @123105 has 3 MA's), (20, 123129), (21, 123150), (22, 123195), (28, 123285),

Gene: Demodog_224 Start: 123777, Stop: 124091, Start Num: 5

Candidate Starts for Demodog_224:

(Start: 5 @123777 has 171 MA's), (6, 123783), (7, 123786), (8, 123813), (17, 123852), (Start: 18 @123864 has 3 MA's), (20, 123888), (21, 123909), (22, 123954), (28, 124044),

Gene: Derek_215 Start: 122174, Stop: 122488, Start Num: 5

Candidate Starts for Derek_215:

(Start: 5 @122174 has 171 MA's), (6, 122180), (7, 122183), (8, 122210), (17, 122249), (Start: 18 @122261 has 3 MA's), (20, 122285), (21, 122306), (22, 122351), (28, 122441),

Gene: Dietrick_207 Start: 120850, Stop: 121164, Start Num: 5

Candidate Starts for Dietrick_207:

(Start: 5 @120850 has 171 MA's), (6, 120856), (7, 120859), (8, 120886), (17, 120925), (Start: 18 @120937 has 3 MA's), (20, 120961), (21, 120982), (22, 121027), (28, 121117),

Gene: DirtMonster_211 Start: 122090, Stop: 122404, Start Num: 5

Candidate Starts for DirtMonster_211:

(Start: 5 @122090 has 171 MA's), (6, 122096), (7, 122099), (8, 122126), (17, 122165), (Start: 18 @122177 has 3 MA's), (20, 122201), (21, 122222), (22, 122267), (28, 122357),

Gene: Domi_212 Start: 122201, Stop: 122515, Start Num: 5

Candidate Starts for Domi_212:

(Start: 5 @122201 has 171 MA's), (6, 122207), (7, 122210), (8, 122237), (17, 122276), (Start: 18 @122288 has 3 MA's), (20, 122312), (21, 122333), (22, 122378), (28, 122468),

Gene: DrPhinkDaddy_215 Start: 123389, Stop: 123703, Start Num: 5

Candidate Starts for DrPhinkDaddy_215:

(Start: 5 @123389 has 171 MA's), (6, 123395), (7, 123398), (17, 123464), (Start: 18 @123476 has 3 MA's), (20, 123500), (21, 123521), (22, 123566), (28, 123656),

Gene: Drazdys_216 Start: 122291, Stop: 122605, Start Num: 5

Candidate Starts for Drazdys_216:

(Start: 5 @122291 has 171 MA's), (6, 122297), (7, 122300), (8, 122327), (17, 122366), (Start: 18 @122378 has 3 MA's), (20, 122402), (21, 122423), (22, 122468), (28, 122558),

Gene: E3_gp161 Start: 111246, Stop: 111515, Start Num: 10

Candidate Starts for E3_gp161:

(Start: 10 @111246 has 2 MA's), (19, 111297), (27, 111447), (29, 111471), (30, 111474),

Gene: ET08_206 Start: 121882, Stop: 122196, Start Num: 5

Candidate Starts for ET08_206:

(Start: 5 @121882 has 171 MA's), (6, 121888), (7, 121891), (8, 121918), (17, 121957), (Start: 18 @121969 has 3 MA's), (20, 121993), (21, 122014), (22, 122059), (28, 122149),

Gene: EasyJones_221 Start: 121370, Stop: 121684, Start Num: 5

Candidate Starts for EasyJones_221:

(Start: 5 @121370 has 171 MA's), (6, 121376), (7, 121379), (8, 121406), (17, 121445), (Start: 18 @121457 has 3 MA's), (20, 121481), (21, 121502), (22, 121547), (28, 121637),

Gene: EggyFarm_227 Start: 124225, Stop: 124539, Start Num: 5

Candidate Starts for EggyFarm_227:

(Start: 5 @124225 has 171 MA's), (6, 124231), (7, 124234), (8, 124261), (17, 124300), (Start: 18 @124312 has 3 MA's), (20, 124336), (21, 124357), (22, 124402), (28, 124492),

Gene: EmToTheThree_218 Start: 122762, Stop: 123076, Start Num: 5

Candidate Starts for EmToTheThree_218:

(Start: 5 @122762 has 171 MA's), (6, 122768), (7, 122771), (17, 122837), (Start: 18 @122849 has 3 MA's), (20, 122873), (21, 122894), (22, 122939), (28, 123029),

Gene: EmmaElysia_222 Start: 123053, Stop: 123367, Start Num: 5

Candidate Starts for EmmaElysia_222:

(Start: 5 @123053 has 171 MA's), (6, 123059), (7, 123062), (8, 123089), (17, 123128), (Start: 18 @123140 has 3 MA's), (20, 123164), (21, 123185), (22, 123230), (28, 123320),

Gene: Erdmann_219 Start: 122721, Stop: 123035, Start Num: 5

Candidate Starts for Erdmann_219:

(Start: 5 @122721 has 171 MA's), (6, 122727), (7, 122730), (8, 122757), (17, 122796), (Start: 18 @122808 has 3 MA's), (20, 122832), (21, 122853), (22, 122898), (28, 122988),

Gene: ErnieJ_211 Start: 119549, Stop: 119863, Start Num: 5

Candidate Starts for ErnieJ_211:

(Start: 5 @119549 has 171 MA's), (6, 119555), (7, 119558), (8, 119585), (17, 119624), (Start: 18 @119636 has 3 MA's), (20, 119660), (21, 119681), (22, 119726), (28, 119816),

Gene: Essence_215 Start: 121503, Stop: 121817, Start Num: 5

Candidate Starts for Essence_215:

(Start: 5 @121503 has 171 MA's), (6, 121509), (7, 121512), (8, 121539), (17, 121578), (Start: 18 @121590 has 3 MA's), (20, 121614), (21, 121635), (22, 121680), (28, 121770),

Gene: Ewok_217 Start: 122639, Stop: 122953, Start Num: 5

Candidate Starts for Ewok_217:

(Start: 5 @122639 has 171 MA's), (6, 122645), (7, 122648), (17, 122714), (Start: 18 @122726 has 3 MA's), (20, 122750), (21, 122771), (22, 122816), (28, 122906),

Gene: Flabslab_213 Start: 119691, Stop: 120005, Start Num: 5

Candidate Starts for Flabslab_213:

(Start: 5 @119691 has 171 MA's), (6, 119697), (7, 119700), (17, 119766), (Start: 18 @119778 has 3 MA's), (20, 119802), (21, 119823), (22, 119868), (28, 119958),

Gene: Fludd_218 Start: 121082, Stop: 121396, Start Num: 5

Candidate Starts for Fludd_218:

(Start: 5 @121082 has 171 MA's), (6, 121088), (7, 121091), (8, 121118), (17, 121157), (Start: 18 @121169 has 3 MA's), (20, 121193), (21, 121214), (22, 121259), (28, 121349),

Gene: FoxtrotP1_216 Start: 123319, Stop: 123633, Start Num: 5

Candidate Starts for FoxtrotP1_216:

(Start: 5 @123319 has 171 MA's), (6, 123325), (7, 123328), (17, 123394), (Start: 18 @123406 has 3 MA's), (20, 123430), (21, 123451), (22, 123496), (28, 123586),

Gene: FrayBell_221 Start: 121172, Stop: 121486, Start Num: 5

Candidate Starts for FrayBell_221:

(Start: 5 @121172 has 171 MA's), (6, 121178), (7, 121181), (8, 121208), (17, 121247), (Start: 18 @121259 has 3 MA's), (20, 121283), (21, 121304), (22, 121349), (28, 121439),

Gene: FudgeTart_213 Start: 121786, Stop: 122100, Start Num: 5
Candidate Starts for FudgeTart_213:
(Start: 5 @121786 has 171 MA's), (6, 121792), (7, 121795), (17, 121861), (Start: 18 @121873 has 3 MA's), (20, 121897), (21, 121918), (22, 121963), (28, 122053),

Gene: Gabriel_221 Start: 121241, Stop: 121555, Start Num: 5
Candidate Starts for Gabriel_221:
(Start: 5 @121241 has 171 MA's), (6, 121247), (7, 121250), (8, 121277), (17, 121316), (Start: 18 @121328 has 3 MA's), (20, 121352), (21, 121373), (22, 121418), (28, 121508),

Gene: Gamgam_219 Start: 121685, Stop: 121912, Start Num: 18
Candidate Starts for Gamgam_219:
(Start: 5 @121598 has 171 MA's), (6, 121604), (7, 121607), (8, 121634), (17, 121673), (Start: 18 @121685 has 3 MA's), (20, 121709), (21, 121730), (22, 121775), (28, 121865),

Gene: Ghost_218 Start: 121519, Stop: 121833, Start Num: 5
Candidate Starts for Ghost_218:
(Start: 5 @121519 has 171 MA's), (6, 121525), (7, 121528), (8, 121555), (17, 121594), (Start: 18 @121606 has 3 MA's), (20, 121630), (21, 121651), (22, 121696), (28, 121786),

Gene: Gizmo_224 Start: 124637, Stop: 124951, Start Num: 5
Candidate Starts for Gizmo_224:
(Start: 5 @124637 has 171 MA's), (6, 124643), (7, 124646), (8, 124673), (17, 124712), (Start: 18 @124724 has 3 MA's), (20, 124748), (21, 124769), (22, 124814), (28, 124904),

Gene: GlutenPhree_218 Start: 121684, Stop: 121923, Start Num: 17
Candidate Starts for GlutenPhree_218:
(Start: 5 @121609 has 171 MA's), (6, 121615), (7, 121618), (8, 121645), (17, 121684), (Start: 18 @121696 has 3 MA's), (20, 121720), (21, 121741), (22, 121786), (28, 121876),

Gene: Grasshills_226 Start: 124224, Stop: 124538, Start Num: 5
Candidate Starts for Grasshills_226:
(Start: 5 @124224 has 171 MA's), (6, 124230), (7, 124233), (8, 124260), (17, 124299), (Start: 18 @124311 has 3 MA's), (20, 124335), (21, 124356), (22, 124401), (28, 124491),

Gene: Greely_209 Start: 118922, Stop: 119173, Start Num: 17
Candidate Starts for Greely_209:
(Start: 10 @118895 has 2 MA's), (14, 118904), (17, 118922), (24, 119048), (29, 119117),

Gene: Grungle_202 Start: 119556, Stop: 119870, Start Num: 5
Candidate Starts for Grungle_202:
(Start: 5 @119556 has 171 MA's), (6, 119562), (7, 119565), (8, 119592), (17, 119631), (Start: 18 @119643 has 3 MA's), (20, 119667), (21, 119688), (22, 119733), (28, 119823),

Gene: Guwapp_213 Start: 120353, Stop: 120667, Start Num: 5
Candidate Starts for Guwapp_213:
(Start: 5 @120353 has 171 MA's), (6, 120359), (7, 120362), (8, 120389), (17, 120428), (Start: 18 @120440 has 3 MA's), (20, 120464), (21, 120485), (22, 120530), (28, 120620),

Gene: Halldule_211 Start: 120738, Stop: 121052, Start Num: 5
Candidate Starts for Halldule_211:

(Start: 5 @120738 has 171 MA's), (6, 120744), (7, 120747), (8, 120774), (17, 120813), (Start: 18 @120825 has 3 MA's), (20, 120849), (21, 120870), (22, 120915), (28, 121005),

Gene: HyRo_206 Start: 120869, Stop: 121183, Start Num: 5

Candidate Starts for HyRo_206:

(Start: 5 @120869 has 171 MA's), (6, 120875), (7, 120878), (17, 120944), (Start: 18 @120956 has 3 MA's), (20, 120980), (21, 121001), (22, 121046), (28, 121136),

Gene: I3_228 Start: 123314, Stop: 123628, Start Num: 5

Candidate Starts for I3_228:

(Start: 5 @123314 has 171 MA's), (6, 123320), (7, 123323), (8, 123350), (17, 123389), (Start: 18 @123401 has 3 MA's), (20, 123425), (21, 123446), (22, 123491), (28, 123581),

Gene: IkeLoa_210 Start: 121263, Stop: 121577, Start Num: 5

Candidate Starts for IkeLoa_210:

(Start: 5 @121263 has 171 MA's), (6, 121269), (7, 121272), (8, 121299), (17, 121338), (Start: 18 @121350 has 3 MA's), (20, 121374), (21, 121395), (22, 121440), (28, 121530),

Gene: InigoMontoya_221 Start: 122272, Stop: 122586, Start Num: 5

Candidate Starts for InigoMontoya_221:

(Start: 5 @122272 has 171 MA's), (6, 122278), (7, 122281), (8, 122308), (17, 122347), (Start: 18 @122359 has 3 MA's), (20, 122383), (21, 122404), (22, 122449), (28, 122539),

Gene: InterFolia_221 Start: 122977, Stop: 123291, Start Num: 5

Candidate Starts for InterFolia_221:

(Start: 5 @122977 has 171 MA's), (6, 122983), (7, 122986), (8, 123013), (17, 123052), (Start: 18 @123064 has 3 MA's), (20, 123088), (21, 123109), (22, 123154), (28, 123244),

Gene: Iota_213 Start: 121957, Stop: 122271, Start Num: 5

Candidate Starts for Iota_213:

(Start: 5 @121957 has 171 MA's), (6, 121963), (7, 121966), (8, 121993), (17, 122032), (Start: 18 @122044 has 3 MA's), (20, 122068), (21, 122089), (22, 122134), (28, 122224),

Gene: Issimir_211 Start: 121910, Stop: 122224, Start Num: 5

Candidate Starts for Issimir_211:

(Start: 5 @121910 has 171 MA's), (6, 121916), (7, 121919), (8, 121946), (17, 121985), (Start: 18 @121997 has 3 MA's), (20, 122021), (21, 122042), (22, 122087), (28, 122177),

Gene: Izajani_216 Start: 122779, Stop: 123093, Start Num: 5

Candidate Starts for Izajani_216:

(Start: 5 @122779 has 171 MA's), (6, 122785), (7, 122788), (17, 122854), (Start: 18 @122866 has 3 MA's), (20, 122890), (21, 122911), (22, 122956), (28, 123046),

Gene: JPickles_214 Start: 120257, Stop: 120571, Start Num: 5

Candidate Starts for JPickles_214:

(Start: 5 @120257 has 171 MA's), (6, 120263), (7, 120266), (8, 120293), (17, 120332), (Start: 18 @120344 has 3 MA's), (20, 120368), (21, 120389), (22, 120434), (28, 120524),

Gene: Janiyra_221 Start: 122497, Stop: 122811, Start Num: 5

Candidate Starts for Janiyra_221:

(Start: 5 @122497 has 171 MA's), (6, 122503), (7, 122506), (8, 122533), (17, 122572), (Start: 18 @122584 has 3 MA's), (20, 122608), (21, 122629), (22, 122674), (28, 122764),

Gene: JayJay_216 Start: 122201, Stop: 122515, Start Num: 5
Candidate Starts for JayJay_216:
(Start: 5 @122201 has 171 MA's), (6, 122207), (7, 122210), (17, 122276), (Start: 18 @122288 has 3 MA's), (20, 122312), (21, 122333), (22, 122378), (28, 122468),

Gene: Jaygup_214 Start: 121318, Stop: 121632, Start Num: 5
Candidate Starts for Jaygup_214:
(Start: 5 @121318 has 171 MA's), (6, 121324), (7, 121327), (8, 121354), (17, 121393), (Start: 18 @121405 has 3 MA's), (20, 121429), (21, 121450), (22, 121495), (28, 121585),

Gene: JeanGrey_102 Start: 82324, Stop: 82566, Start Num: 14
Candidate Starts for JeanGrey_102:
(14, 82324), (20, 82375), (22, 82435), (25, 82477), (30, 82531),

Gene: Jedediah_218 Start: 122371, Stop: 122685, Start Num: 5
Candidate Starts for Jedediah_218:
(Start: 5 @122371 has 171 MA's), (6, 122377), (7, 122380), (8, 122407), (17, 122446), (Start: 18 @122458 has 3 MA's), (20, 122482), (21, 122503), (22, 122548), (28, 122638),

Gene: Jemmno_217 Start: 121200, Stop: 121514, Start Num: 5
Candidate Starts for Jemmno_217:
(Start: 5 @121200 has 171 MA's), (6, 121206), (7, 121209), (8, 121236), (17, 121275), (Start: 18 @121287 has 3 MA's), (20, 121311), (21, 121332), (22, 121377), (28, 121467),

Gene: Jessibeth14_218 Start: 123388, Stop: 123702, Start Num: 5
Candidate Starts for Jessibeth14_218:
(Start: 5 @123388 has 171 MA's), (6, 123394), (7, 123397), (17, 123463), (Start: 18 @123475 has 3 MA's), (20, 123499), (21, 123520), (22, 123565), (28, 123655),

Gene: Jezreel_215 Start: 122458, Stop: 122772, Start Num: 5
Candidate Starts for Jezreel_215:
(Start: 5 @122458 has 171 MA's), (6, 122464), (7, 122467), (17, 122533), (Start: 18 @122545 has 3 MA's), (20, 122569), (21, 122590), (22, 122635), (28, 122725),

Gene: JigglyPuff_225 Start: 123775, Stop: 124089, Start Num: 5
Candidate Starts for JigglyPuff_225:
(Start: 5 @123775 has 171 MA's), (6, 123781), (7, 123784), (8, 123811), (17, 123850), (Start: 18 @123862 has 3 MA's), (20, 123886), (21, 123907), (22, 123952), (28, 124042),

Gene: JulietS_211 Start: 119498, Stop: 119812, Start Num: 5
Candidate Starts for JulietS_211:
(Start: 5 @119498 has 171 MA's), (6, 119504), (7, 119507), (8, 119534), (17, 119573), (Start: 18 @119585 has 3 MA's), (20, 119609), (21, 119630), (22, 119675), (28, 119765),

Gene: JustHall_212 Start: 121404, Stop: 121718, Start Num: 5
Candidate Starts for JustHall_212:
(Start: 5 @121404 has 171 MA's), (6, 121410), (7, 121413), (17, 121479), (Start: 18 @121491 has 3 MA's), (20, 121515), (21, 121536), (22, 121581), (28, 121671),

Gene: Kamryn_217 Start: 123034, Stop: 123348, Start Num: 5
Candidate Starts for Kamryn_217:
(Start: 5 @123034 has 171 MA's), (6, 123040), (7, 123043), (17, 123109), (Start: 18 @123121 has 3 MA's), (20, 123145), (21, 123166), (22, 123211), (28, 123301),

Gene: Kboogie_222 Start: 122062, Stop: 122376, Start Num: 5

Candidate Starts for Kboogie_222:

(Start: 5 @122062 has 171 MA's), (6, 122068), (7, 122071), (8, 122098), (17, 122137), (Start: 18 @122149 has 3 MA's), (20, 122173), (21, 122194), (22, 122239), (28, 122329),

Gene: Khaleesi_217 Start: 122855, Stop: 123169, Start Num: 5

Candidate Starts for Khaleesi_217:

(Start: 5 @122855 has 171 MA's), (6, 122861), (7, 122864), (17, 122930), (Start: 18 @122942 has 3 MA's), (20, 122966), (21, 122987), (22, 123032), (28, 123122),

Gene: Koguma_217 Start: 121715, Stop: 122029, Start Num: 5

Candidate Starts for Koguma_217:

(Start: 5 @121715 has 171 MA's), (6, 121721), (7, 121724), (8, 121751), (17, 121790), (Start: 18 @121802 has 3 MA's), (20, 121826), (21, 121847), (22, 121892), (28, 121982),

Gene: LRRHood_211 Start: 121067, Stop: 121381, Start Num: 5

Candidate Starts for LRRHood_211:

(Start: 5 @121067 has 171 MA's), (6, 121073), (7, 121076), (8, 121103), (17, 121142), (Start: 18 @121154 has 3 MA's), (20, 121178), (21, 121199), (22, 121244), (28, 121334),

Gene: Latch_218 Start: 121608, Stop: 121922, Start Num: 5

Candidate Starts for Latch_218:

(Start: 5 @121608 has 171 MA's), (6, 121614), (7, 121617), (8, 121644), (17, 121683), (Start: 18 @121695 has 3 MA's), (20, 121719), (21, 121740), (22, 121785), (28, 121875),

Gene: Lee7_218 Start: 124235, Stop: 124549, Start Num: 5

Candidate Starts for Lee7_218:

(Start: 5 @124235 has 171 MA's), (6, 124241), (7, 124244), (17, 124310), (Start: 18 @124322 has 3 MA's), (20, 124346), (21, 124367), (22, 124412), (28, 124502),

Gene: Lethe_220 Start: 123498, Stop: 123812, Start Num: 5

Candidate Starts for Lethe_220:

(Start: 5 @123498 has 171 MA's), (6, 123504), (7, 123507), (8, 123534), (17, 123573), (Start: 18 @123585 has 3 MA's), (20, 123609), (21, 123630), (22, 123675), (28, 123765),

Gene: LifeSavor_217 Start: 122133, Stop: 122447, Start Num: 5

Candidate Starts for LifeSavor_217:

(Start: 5 @122133 has 171 MA's), (6, 122139), (7, 122142), (8, 122169), (17, 122208), (Start: 18 @122220 has 3 MA's), (20, 122244), (21, 122265), (22, 122310), (28, 122400),

Gene: LinStu_217 Start: 121354, Stop: 121668, Start Num: 5

Candidate Starts for LinStu_217:

(Start: 5 @121354 has 171 MA's), (6, 121360), (7, 121363), (17, 121429), (Start: 18 @121441 has 3 MA's), (20, 121465), (21, 121486), (22, 121531), (28, 121621),

Gene: Littleton_221 Start: 122845, Stop: 123159, Start Num: 5

Candidate Starts for Littleton_221:

(Start: 5 @122845 has 171 MA's), (6, 122851), (7, 122854), (8, 122881), (17, 122920), (Start: 18 @122932 has 3 MA's), (20, 122956), (21, 122977), (22, 123022), (28, 123112),

Gene: Loanshark_215 Start: 122170, Stop: 122484, Start Num: 5

Candidate Starts for Loanshark_215:

(Start: 5 @122170 has 171 MA's), (6, 122176), (7, 122179), (17, 122245), (Start: 18 @122257 has 3 MA's), (20, 122281), (21, 122302), (22, 122347), (28, 122437),

Gene: LolaVinca_216 Start: 122407, Stop: 122721, Start Num: 5

Candidate Starts for LolaVinca_216:

(Start: 5 @122407 has 171 MA's), (6, 122413), (7, 122416), (8, 122443), (17, 122482), (Start: 18 @122494 has 3 MA's), (20, 122518), (21, 122539), (22, 122584), (28, 122674),

Gene: LordLeafolot_220 Start: 122020, Stop: 122334, Start Num: 5

Candidate Starts for LordLeafolot_220:

(Start: 5 @122020 has 171 MA's), (6, 122026), (7, 122029), (8, 122056), (17, 122095), (Start: 18 @122107 has 3 MA's), (20, 122131), (21, 122152), (22, 122197), (28, 122287),

Gene: Lukilu_209 Start: 123070, Stop: 123384, Start Num: 5

Candidate Starts for Lukilu_209:

(Start: 5 @123070 has 171 MA's), (6, 123076), (7, 123079), (8, 123106), (17, 123145), (Start: 18 @123157 has 3 MA's), (20, 123181), (21, 123202), (22, 123247), (28, 123337),

Gene: Maby2021_218 Start: 123299, Stop: 123613, Start Num: 5

Candidate Starts for Maby2021_218:

(Start: 5 @123299 has 171 MA's), (6, 123305), (7, 123308), (8, 123335), (17, 123374), (Start: 18 @123386 has 3 MA's), (20, 123410), (21, 123431), (22, 123476), (28, 123566),

Gene: Mangeria_219 Start: 123401, Stop: 123715, Start Num: 5

Candidate Starts for Mangeria_219:

(Start: 5 @123401 has 171 MA's), (6, 123407), (7, 123410), (8, 123437), (17, 123476), (Start: 18 @123488 has 3 MA's), (20, 123512), (21, 123533), (22, 123578), (28, 123668),

Gene: McGee_217 Start: 121244, Stop: 121558, Start Num: 5

Candidate Starts for McGee_217:

(Start: 5 @121244 has 171 MA's), (6, 121250), (7, 121253), (8, 121280), (17, 121319), (Start: 18 @121331 has 3 MA's), (20, 121355), (21, 121376), (22, 121421), (28, 121511),

Gene: McWolfish_215 Start: 122066, Stop: 122380, Start Num: 5

Candidate Starts for McWolfish_215:

(Start: 5 @122066 has 171 MA's), (6, 122072), (7, 122075), (17, 122141), (Start: 18 @122153 has 3 MA's), (20, 122177), (21, 122198), (22, 122243), (28, 122333),

Gene: Megamind_215 Start: 122357, Stop: 122671, Start Num: 5

Candidate Starts for Megamind_215:

(Start: 5 @122357 has 171 MA's), (6, 122363), (7, 122366), (17, 122432), (Start: 18 @122444 has 3 MA's), (20, 122468), (21, 122489), (22, 122534), (28, 122624),

Gene: Melpomini_213 Start: 121142, Stop: 121456, Start Num: 5

Candidate Starts for Melpomini_213:

(Start: 5 @121142 has 171 MA's), (6, 121148), (7, 121151), (8, 121178), (17, 121217), (Start: 18 @121229 has 3 MA's), (20, 121253), (21, 121274), (22, 121319), (28, 121409),

Gene: MikeLiesIn_220 Start: 123493, Stop: 123807, Start Num: 5

Candidate Starts for MikeLiesIn_220:

(Start: 5 @123493 has 171 MA's), (6, 123499), (7, 123502), (17, 123568), (Start: 18 @123580 has 3 MA's), (20, 123604), (21, 123625), (22, 123670), (28, 123760),

Gene: Mikro_214 Start: 124042, Stop: 124356, Start Num: 5
Candidate Starts for Mikro_214:
(Start: 5 @124042 has 171 MA's), (6, 124048), (7, 124051), (17, 124117), (Start: 18 @124129 has 3 MA's), (20, 124153), (21, 124174), (22, 124219), (28, 124309),

Gene: MoMoMixon_216 Start: 122532, Stop: 122846, Start Num: 5
Candidate Starts for MoMoMixon_216:
(Start: 5 @122532 has 171 MA's), (6, 122538), (7, 122541), (17, 122607), (Start: 18 @122619 has 3 MA's), (20, 122643), (21, 122664), (22, 122709), (28, 122799),

Gene: Momo_219 Start: 121608, Stop: 121922, Start Num: 5
Candidate Starts for Momo_219:
(Start: 5 @121608 has 171 MA's), (6, 121614), (7, 121617), (8, 121644), (17, 121683), (Start: 18 @121695 has 3 MA's), (20, 121719), (21, 121740), (22, 121785), (28, 121875),

Gene: Morizzled23_215 Start: 120975, Stop: 121289, Start Num: 5
Candidate Starts for Morizzled23_215:
(Start: 5 @120975 has 171 MA's), (6, 120981), (7, 120984), (8, 121011), (17, 121050), (Start: 18 @121062 has 3 MA's), (20, 121086), (21, 121107), (22, 121152), (28, 121242),

Gene: Myrna_202 Start: 118284, Stop: 118550, Start Num: 13
Candidate Starts for Myrna_202:
(Start: 13 @118284 has 1 MA's), (14, 118293), (15, 118299), (24, 118437),

Gene: Naija_219 Start: 122311, Stop: 122625, Start Num: 5
Candidate Starts for Naija_219:
(Start: 5 @122311 has 171 MA's), (6, 122317), (7, 122320), (8, 122347), (17, 122386), (Start: 18 @122398 has 3 MA's), (20, 122422), (21, 122443), (22, 122488), (28, 122578),

Gene: Napoleon13_215 Start: 121339, Stop: 121653, Start Num: 5
Candidate Starts for Napoleon13_215:
(Start: 5 @121339 has 171 MA's), (6, 121345), (7, 121348), (8, 121375), (17, 121414), (Start: 18 @121426 has 3 MA's), (20, 121450), (21, 121471), (22, 121516), (28, 121606),

Gene: Nappy_219 Start: 123012, Stop: 123326, Start Num: 5
Candidate Starts for Nappy_219:
(Start: 5 @123012 has 171 MA's), (6, 123018), (7, 123021), (8, 123048), (17, 123087), (Start: 18 @123099 has 3 MA's), (20, 123123), (21, 123144), (22, 123189), (28, 123279),

Gene: NedWong_217 Start: 122744, Stop: 123058, Start Num: 5
Candidate Starts for NedWong_217:
(Start: 5 @122744 has 171 MA's), (6, 122750), (7, 122753), (17, 122819), (Start: 18 @122831 has 3 MA's), (20, 122855), (21, 122876), (22, 122921), (28, 123011),

Gene: Ngannou_215 Start: 120590, Stop: 120904, Start Num: 5
Candidate Starts for Ngannou_215:
(Start: 5 @120590 has 171 MA's), (6, 120596), (7, 120599), (8, 120626), (17, 120665), (Start: 18 @120677 has 3 MA's), (20, 120701), (21, 120722), (22, 120767), (28, 120857),

Gene: Nidhogg_219 Start: 123137, Stop: 123451, Start Num: 5
Candidate Starts for Nidhogg_219:
(Start: 5 @123137 has 171 MA's), (6, 123143), (7, 123146), (8, 123173), (17, 123212), (Start: 18 @123224 has 3 MA's), (20, 123248), (21, 123269), (22, 123314), (28, 123404),

Gene: NoodleTree_224 Start: 123044, Stop: 123358, Start Num: 5
Candidate Starts for NoodleTree_224:
(Start: 5 @123044 has 171 MA's), (6, 123050), (7, 123053), (17, 123119), (Start: 18 @123131 has 3 MA's), (20, 123155), (21, 123176), (22, 123221), (28, 123311),

Gene: Norm_218 Start: 123046, Stop: 123360, Start Num: 5
Candidate Starts for Norm_218:
(Start: 5 @123046 has 171 MA's), (6, 123052), (7, 123055), (8, 123082), (17, 123121), (Start: 18 @123133 has 3 MA's), (20, 123157), (21, 123178), (22, 123223), (28, 123313),

Gene: NuevoMundo_221 Start: 123605, Stop: 123919, Start Num: 5
Candidate Starts for NuevoMundo_221:
(Start: 5 @123605 has 171 MA's), (6, 123611), (7, 123614), (17, 123680), (Start: 18 @123692 has 3 MA's), (20, 123716), (21, 123737), (22, 123782), (28, 123872),

Gene: ParkTD_217 Start: 122608, Stop: 122922, Start Num: 5
Candidate Starts for ParkTD_217:
(Start: 5 @122608 has 171 MA's), (6, 122614), (7, 122617), (17, 122683), (Start: 18 @122695 has 3 MA's), (20, 122719), (21, 122740), (22, 122785), (28, 122875),

Gene: Patter_219 Start: 121622, Stop: 121936, Start Num: 5
Candidate Starts for Patter_219:
(Start: 5 @121622 has 171 MA's), (6, 121628), (7, 121631), (8, 121658), (17, 121697), (Start: 18 @121709 has 3 MA's), (20, 121733), (21, 121754), (22, 121799), (28, 121889),

Gene: Phabba_213 Start: 118243, Stop: 118521, Start Num: 10
Candidate Starts for Phabba_213:
(Start: 10 @118243 has 2 MA's), (14, 118252), (17, 118270), (23, 118378), (24, 118396),

Gene: Phlegm_222 Start: 122311, Stop: 122625, Start Num: 5
Candidate Starts for Phlegm_222:
(Start: 5 @122311 has 171 MA's), (6, 122317), (7, 122320), (8, 122347), (17, 122386), (Start: 18 @122398 has 3 MA's), (20, 122422), (21, 122443), (22, 122488), (28, 122578),

Gene: Phox_219 Start: 122273, Stop: 122587, Start Num: 5
Candidate Starts for Phox_219:
(Start: 5 @122273 has 171 MA's), (6, 122279), (7, 122282), (8, 122309), (17, 122348), (Start: 18 @122360 has 3 MA's), (20, 122384), (21, 122405), (22, 122450), (28, 122540),

Gene: Phrappuccino_131 Start: 94973, Stop: 95254, Start Num: 9
Candidate Starts for Phrappuccino_131:
(1, 94682), (2, 94712), (Start: 9 @94973 has 2 MA's), (14, 95003), (25, 95153), (26, 95171), (27, 95180),

Gene: Phusco_216 Start: 121143, Stop: 121457, Start Num: 5
Candidate Starts for Phusco_216:
(Start: 5 @121143 has 171 MA's), (6, 121149), (7, 121152), (8, 121179), (17, 121218), (Start: 18 @121230 has 3 MA's), (20, 121254), (21, 121275), (22, 121320), (28, 121410),

Gene: Pier_219 Start: 123150, Stop: 123464, Start Num: 5
Candidate Starts for Pier_219:

(Start: 5 @123150 has 171 MA's), (6, 123156), (7, 123159), (17, 123225), (Start: 18 @123237 has 3 MA's), (20, 123261), (21, 123282), (22, 123327), (28, 123417),

Gene: Pinkcreek_202 Start: 120526, Stop: 120840, Start Num: 5

Candidate Starts for Pinkcreek_202:

(Start: 5 @120526 has 171 MA's), (6, 120532), (7, 120535), (17, 120601), (Start: 18 @120613 has 3 MA's), (20, 120637), (21, 120658), (22, 120703), (28, 120793),

Gene: Pio_226 Start: 124342, Stop: 124656, Start Num: 5

Candidate Starts for Pio_226:

(Start: 5 @124342 has 171 MA's), (6, 124348), (7, 124351), (8, 124378), (17, 124417), (Start: 18 @124429 has 3 MA's), (20, 124453), (21, 124474), (22, 124519), (28, 124609),

Gene: Pivoine_219 Start: 122311, Stop: 122625, Start Num: 5

Candidate Starts for Pivoine_219:

(Start: 5 @122311 has 171 MA's), (6, 122317), (7, 122320), (8, 122347), (17, 122386), (Start: 18 @122398 has 3 MA's), (20, 122422), (21, 122443), (22, 122488), (28, 122578),

Gene: Pleione_222 Start: 123086, Stop: 123400, Start Num: 5

Candidate Starts for Pleione_222:

(Start: 5 @123086 has 171 MA's), (6, 123092), (7, 123095), (8, 123122), (17, 123161), (Start: 18 @123173 has 3 MA's), (20, 123197), (21, 123218), (22, 123263), (28, 123353),

Gene: Pupper_160 Start: 113798, Stop: 114124, Start Num: 5

Candidate Starts for Pupper_160:

(3, 113723), (4, 113783), (Start: 5 @113798 has 171 MA's), (11, 113849), (12, 113858), (25, 114032),

Gene: PurduePete_218 Start: 123314, Stop: 123628, Start Num: 5

Candidate Starts for PurduePete_218:

(Start: 5 @123314 has 171 MA's), (6, 123320), (7, 123323), (17, 123389), (Start: 18 @123401 has 3 MA's), (20, 123425), (21, 123446), (22, 123491), (28, 123581),

Gene: QBert_210 Start: 120674, Stop: 120988, Start Num: 5

Candidate Starts for QBert_210:

(Start: 5 @120674 has 171 MA's), (6, 120680), (7, 120683), (8, 120710), (17, 120749), (Start: 18 @120761 has 3 MA's), (20, 120785), (21, 120806), (22, 120851), (28, 120941),

Gene: Quasimodo_220 Start: 121944, Stop: 122258, Start Num: 5

Candidate Starts for Quasimodo_220:

(Start: 5 @121944 has 171 MA's), (6, 121950), (7, 121953), (8, 121980), (17, 122019), (Start: 18 @122031 has 3 MA's), (20, 122055), (21, 122076), (22, 122121), (28, 122211),

Gene: Rabinovish_211 Start: 122219, Stop: 122533, Start Num: 5

Candidate Starts for Rabinovish_211:

(Start: 5 @122219 has 171 MA's), (6, 122225), (7, 122228), (17, 122294), (Start: 18 @122306 has 3 MA's), (20, 122330), (21, 122351), (22, 122396), (28, 122486),

Gene: Rahel_219 Start: 122046, Stop: 122360, Start Num: 5

Candidate Starts for Rahel_219:

(Start: 5 @122046 has 171 MA's), (6, 122052), (7, 122055), (8, 122082), (17, 122121), (Start: 18 @122133 has 3 MA's), (20, 122157), (21, 122178), (22, 122223), (28, 122313),

Gene: Rizal_210 Start: 120564, Stop: 120878, Start Num: 5

Candidate Starts for Rizal_210:

(Start: 5 @120564 has 171 MA's), (6, 120570), (7, 120573), (8, 120600), (17, 120639), (Start: 18 @120651 has 3 MA's), (20, 120675), (21, 120696), (22, 120741), (28, 120831),

Gene: RoMag_213 Start: 122357, Stop: 122671, Start Num: 5

Candidate Starts for RoMag_213:

(Start: 5 @122357 has 171 MA's), (6, 122363), (7, 122366), (8, 122393), (17, 122432), (Start: 18 @122444 has 3 MA's), (20, 122468), (21, 122489), (22, 122534), (28, 122624),

Gene: Ronan_214 Start: 120749, Stop: 121063, Start Num: 5

Candidate Starts for Ronan_214:

(Start: 5 @120749 has 171 MA's), (6, 120755), (7, 120758), (8, 120785), (17, 120824), (Start: 18 @120836 has 3 MA's), (20, 120860), (21, 120881), (22, 120926), (28, 121016),

Gene: Roots515_220 Start: 123865, Stop: 124179, Start Num: 5

Candidate Starts for Roots515_220:

(Start: 5 @123865 has 171 MA's), (6, 123871), (7, 123874), (17, 123940), (Start: 18 @123952 has 3 MA's), (20, 123976), (21, 123997), (22, 124042), (28, 124132),

Gene: SCentae_159 Start: 113952, Stop: 114278, Start Num: 5

Candidate Starts for SCentae_159:

(3, 113877), (4, 113937), (Start: 5 @113952 has 171 MA's), (11, 114003), (12, 114012), (25, 114186),

Gene: SVoro_215 Start: 122659, Stop: 122973, Start Num: 5

Candidate Starts for SVoro_215:

(Start: 5 @122659 has 171 MA's), (6, 122665), (7, 122668), (17, 122734), (Start: 18 @122746 has 3 MA's), (20, 122770), (21, 122791), (22, 122836), (28, 122926),

Gene: Salacia_218 Start: 122449, Stop: 122763, Start Num: 5

Candidate Starts for Salacia_218:

(Start: 5 @122449 has 171 MA's), (6, 122455), (7, 122458), (17, 122524), (Start: 18 @122536 has 3 MA's), (20, 122560), (21, 122581), (22, 122626), (28, 122716),

Gene: Sauce_214 Start: 121272, Stop: 121586, Start Num: 5

Candidate Starts for Sauce_214:

(Start: 5 @121272 has 171 MA's), (6, 121278), (7, 121281), (8, 121308), (17, 121347), (Start: 18 @121359 has 3 MA's), (20, 121383), (21, 121404), (22, 121449), (28, 121539),

Gene: ScoobyDoobyDoo_201 Start: 116467, Stop: 116730, Start Num: 10

Candidate Starts for ScoobyDoobyDoo_201:

(Start: 10 @116467 has 2 MA's), (14, 116473), (20, 116527), (29, 116686),

Gene: ScottMcG_212 Start: 121342, Stop: 121656, Start Num: 5

Candidate Starts for ScottMcG_212:

(Start: 5 @121342 has 171 MA's), (6, 121348), (7, 121351), (8, 121378), (17, 121417), (Start: 18 @121429 has 3 MA's), (20, 121453), (21, 121474), (22, 121519), (28, 121609),

Gene: Sebata_219 Start: 122779, Stop: 123093, Start Num: 5

Candidate Starts for Sebata_219:

(Start: 5 @122779 has 171 MA's), (6, 122785), (7, 122788), (17, 122854), (Start: 18 @122866 has 3 MA's), (20, 122890), (21, 122911), (22, 122956), (28, 123046),

Gene: Settecandela_131 Start: 94973, Stop: 95254, Start Num: 9

Candidate Starts for Settecandela_131:

(1, 94682), (2, 94712), (Start: 9 @94973 has 2 MA's), (14, 95003), (25, 95153), (26, 95171), (27, 95180),

Gene: Shaqnato_209 Start: 121480, Stop: 121794, Start Num: 5

Candidate Starts for Shaqnato_209:

(Start: 5 @121480 has 171 MA's), (6, 121486), (7, 121489), (8, 121516), (17, 121555), (Start: 18 @121567 has 3 MA's), (20, 121591), (21, 121612), (22, 121657), (28, 121747),

Gene: Shelob_219 Start: 124220, Stop: 124534, Start Num: 5

Candidate Starts for Shelob_219:

(Start: 5 @124220 has 171 MA's), (6, 124226), (7, 124229), (17, 124295), (Start: 18 @124307 has 3 MA's), (20, 124331), (21, 124352), (22, 124397), (28, 124487),

Gene: ShiaLabeouf_215 Start: 121254, Stop: 121568, Start Num: 5

Candidate Starts for ShiaLabeouf_215:

(Start: 5 @121254 has 171 MA's), (6, 121260), (7, 121263), (8, 121290), (17, 121329), (Start: 18 @121341 has 3 MA's), (20, 121365), (21, 121386), (22, 121431), (28, 121521),

Gene: Shifa_195 Start: 120838, Stop: 121152, Start Num: 5

Candidate Starts for Shifa_195:

(Start: 5 @120838 has 171 MA's), (6, 120844), (7, 120847), (17, 120913), (Start: 18 @120925 has 3 MA's), (20, 120949), (21, 120970), (22, 121015), (28, 121105),

Gene: Shnickers_216 Start: 121318, Stop: 121632, Start Num: 5

Candidate Starts for Shnickers_216:

(Start: 5 @121318 has 171 MA's), (6, 121324), (7, 121327), (8, 121354), (17, 121393), (Start: 18 @121405 has 3 MA's), (20, 121429), (21, 121450), (22, 121495), (28, 121585),

Gene: Shrimp_220 Start: 123375, Stop: 123689, Start Num: 5

Candidate Starts for Shrimp_220:

(Start: 5 @123375 has 171 MA's), (6, 123381), (7, 123384), (8, 123411), (17, 123450), (Start: 18 @123462 has 3 MA's), (20, 123486), (21, 123507), (22, 123552), (28, 123642),

Gene: SilverDipper_222 Start: 122867, Stop: 123181, Start Num: 5

Candidate Starts for SilverDipper_222:

(Start: 5 @122867 has 171 MA's), (6, 122873), (7, 122876), (8, 122903), (17, 122942), (Start: 18 @122954 has 3 MA's), (20, 122978), (21, 122999), (22, 123044), (28, 123134),

Gene: Skog_220 Start: 143421, Stop: 143741, Start Num: 5

Candidate Starts for Skog_220:

(4, 143406), (Start: 5 @143421 has 171 MA's), (15, 143493), (16, 143499),

Gene: SmallFry_218 Start: 121412, Stop: 121726, Start Num: 5

Candidate Starts for SmallFry_218:

(Start: 5 @121412 has 171 MA's), (6, 121418), (7, 121421), (8, 121448), (17, 121487), (Start: 18 @121499 has 3 MA's), (20, 121523), (21, 121544), (22, 121589), (28, 121679),

Gene: Spec_213 Start: 121603, Stop: 121917, Start Num: 5

Candidate Starts for Spec_213:

(Start: 5 @121603 has 171 MA's), (6, 121609), (7, 121612), (8, 121639), (17, 121678), (Start: 18 @121690 has 3 MA's), (20, 121714), (21, 121735), (22, 121780), (28, 121870),

Gene: Specks_222 Start: 122728, Stop: 123042, Start Num: 5

Candidate Starts for Specks_222:

(Start: 5 @122728 has 171 MA's), (6, 122734), (7, 122737), (8, 122764), (17, 122803), (Start: 18 @122815 has 3 MA's), (20, 122839), (21, 122860), (22, 122905), (28, 122995),

Gene: Sprinklers_216 Start: 121970, Stop: 122284, Start Num: 5

Candidate Starts for Sprinklers_216:

(Start: 5 @121970 has 171 MA's), (6, 121976), (7, 121979), (8, 122006), (17, 122045), (Start: 18 @122057 has 3 MA's), (20, 122081), (21, 122102), (22, 122147), (28, 122237),

Gene: Spud_212 Start: 121682, Stop: 121996, Start Num: 5

Candidate Starts for Spud_212:

(Start: 5 @121682 has 171 MA's), (6, 121688), (7, 121691), (8, 121718), (17, 121757), (Start: 18 @121769 has 3 MA's), (20, 121793), (21, 121814), (22, 121859), (28, 121949),

Gene: SrishMeg2525_215 Start: 122846, Stop: 123160, Start Num: 5

Candidate Starts for SrishMeg2525_215:

(Start: 5 @122846 has 171 MA's), (6, 122852), (7, 122855), (17, 122921), (Start: 18 @122933 has 3 MA's), (20, 122957), (21, 122978), (22, 123023), (28, 123113),

Gene: StephanieG_214 Start: 122967, Stop: 123194, Start Num: 18

Candidate Starts for StephanieG_214:

(Start: 5 @122880 has 171 MA's), (6, 122886), (7, 122889), (8, 122916), (17, 122955), (Start: 18 @122967 has 3 MA's), (20, 122991), (21, 123012), (22, 123057), (28, 123147),

Gene: Stubby_202 Start: 120729, Stop: 121043, Start Num: 5

Candidate Starts for Stubby_202:

(Start: 5 @120729 has 171 MA's), (6, 120735), (7, 120738), (17, 120804), (Start: 18 @120816 has 3 MA's), (20, 120840), (21, 120861), (22, 120906), (28, 120996),

Gene: StubbySaigey_223 Start: 122401, Stop: 122715, Start Num: 5

Candidate Starts for StubbySaigey_223:

(Start: 5 @122401 has 171 MA's), (6, 122407), (7, 122410), (8, 122437), (17, 122476), (Start: 18 @122488 has 3 MA's), (20, 122512), (21, 122533), (22, 122578), (28, 122668),

Gene: Tainan_219 Start: 121747, Stop: 122061, Start Num: 5

Candidate Starts for Tainan_219:

(Start: 5 @121747 has 171 MA's), (6, 121753), (7, 121756), (8, 121783), (17, 121822), (Start: 18 @121834 has 3 MA's), (20, 121858), (21, 121879), (22, 121924), (28, 122014),

Gene: Teardrop_215 Start: 120914, Stop: 121228, Start Num: 5

Candidate Starts for Teardrop_215:

(Start: 5 @120914 has 171 MA's), (6, 120920), (7, 120923), (8, 120950), (17, 120989), (Start: 18 @121001 has 3 MA's), (20, 121025), (21, 121046), (22, 121091), (28, 121181),

Gene: TinyTim_216 Start: 121695, Stop: 122009, Start Num: 5

Candidate Starts for TinyTim_216:

(Start: 5 @121695 has 171 MA's), (6, 121701), (7, 121704), (8, 121731), (17, 121770), (Start: 18 @121782 has 3 MA's), (20, 121806), (21, 121827), (22, 121872), (28, 121962),

Gene: Tonenili_240 Start: 127525, Stop: 127839, Start Num: 5

Candidate Starts for Tonenili_240:

(Start: 5 @127525 has 171 MA's), (6, 127531), (17, 127600), (19, 127621), (20, 127636), (21, 127657), (27, 127771), (28, 127792), (30, 127798),

Gene: Tortoise16_216 Start: 122157, Stop: 122471, Start Num: 5

Candidate Starts for Tortoise16_216:

(Start: 5 @122157 has 171 MA's), (6, 122163), (7, 122166), (8, 122193), (17, 122232), (Start: 18 @122244 has 3 MA's), (20, 122268), (21, 122289), (22, 122334), (28, 122424),

Gene: Trinitium_214 Start: 120449, Stop: 120763, Start Num: 5

Candidate Starts for Trinitium_214:

(Start: 5 @120449 has 171 MA's), (6, 120455), (7, 120458), (8, 120485), (17, 120524), (Start: 18 @120536 has 3 MA's), (20, 120560), (21, 120581), (22, 120626), (28, 120716),

Gene: Turret_211 Start: 120031, Stop: 120345, Start Num: 5

Candidate Starts for Turret_211:

(Start: 5 @120031 has 171 MA's), (6, 120037), (7, 120040), (8, 120067), (17, 120106), (Start: 18 @120118 has 3 MA's), (20, 120142), (21, 120163), (22, 120208), (28, 120298),

Gene: Tyke_216 Start: 123524, Stop: 123838, Start Num: 5

Candidate Starts for Tyke_216:

(Start: 5 @123524 has 171 MA's), (6, 123530), (7, 123533), (8, 123560), (17, 123599), (Start: 18 @123611 has 3 MA's), (20, 123635), (21, 123656), (22, 123701), (28, 123791),

Gene: ValleyTerrace_219 Start: 121608, Stop: 121922, Start Num: 5

Candidate Starts for ValleyTerrace_219:

(Start: 5 @121608 has 171 MA's), (6, 121614), (7, 121617), (8, 121644), (17, 121683), (Start: 18 @121695 has 3 MA's), (20, 121719), (21, 121740), (22, 121785), (28, 121875),

Gene: Wally_216 Start: 121592, Stop: 121906, Start Num: 5

Candidate Starts for Wally_216:

(Start: 5 @121592 has 171 MA's), (6, 121598), (7, 121601), (8, 121628), (17, 121667), (Start: 18 @121679 has 3 MA's), (20, 121703), (21, 121724), (22, 121769), (28, 121859),

Gene: Willis_219 Start: 122506, Stop: 122820, Start Num: 5

Candidate Starts for Willis_219:

(Start: 5 @122506 has 171 MA's), (6, 122512), (7, 122515), (17, 122581), (Start: 18 @122593 has 3 MA's), (20, 122617), (21, 122638), (22, 122683), (28, 122773),

Gene: Yassified_215 Start: 121956, Stop: 122270, Start Num: 5

Candidate Starts for Yassified_215:

(Start: 5 @121956 has 171 MA's), (6, 121962), (7, 121965), (8, 121992), (17, 122031), (Start: 18 @122043 has 3 MA's), (20, 122067), (21, 122088), (22, 122133), (28, 122223),

Gene: YemiJoy2021_219 Start: 123262, Stop: 123576, Start Num: 5

Candidate Starts for YemiJoy2021_219:

(Start: 5 @123262 has 171 MA's), (6, 123268), (7, 123271), (8, 123298), (17, 123337), (Start: 18 @123349 has 3 MA's), (20, 123373), (21, 123394), (22, 123439), (28, 123529),

Gene: YoungMoneyMata_217 Start: 122076, Stop: 122390, Start Num: 5

Candidate Starts for YoungMoneyMata_217:

(Start: 5 @122076 has 171 MA's), (6, 122082), (7, 122085), (17, 122151), (Start: 18 @122163 has 3 MA's), (20, 122187), (21, 122208), (22, 122253), (28, 122343),

Gene: Yucca_218 Start: 123254, Stop: 123568, Start Num: 5

Candidate Starts for Yucca_218:

(Start: 5 @123254 has 171 MA's), (6, 123260), (7, 123263), (8, 123290), (17, 123329), (Start: 18 @123341 has 3 MA's), (20, 123365), (21, 123386), (22, 123431), (28, 123521),

Gene: Zalkecks_217 Start: 122335, Stop: 122649, Start Num: 5

Candidate Starts for Zalkecks_217:

(Start: 5 @122335 has 171 MA's), (6, 122341), (7, 122344), (17, 122410), (Start: 18 @122422 has 3 MA's), (20, 122446), (21, 122467), (22, 122512), (28, 122602),

Gene: Zeenon_220 Start: 122906, Stop: 123220, Start Num: 5

Candidate Starts for Zeenon_220:

(Start: 5 @122906 has 171 MA's), (6, 122912), (7, 122915), (8, 122942), (17, 122981), (Start: 18 @122993 has 3 MA's), (20, 123017), (21, 123038), (22, 123083), (28, 123173),

Gene: ZygoTaiga_215 Start: 123526, Stop: 123840, Start Num: 5

Candidate Starts for ZygoTaiga_215:

(Start: 5 @123526 has 171 MA's), (6, 123532), (7, 123535), (17, 123601), (Start: 18 @123613 has 3 MA's), (20, 123637), (21, 123658), (22, 123703), (28, 123793),