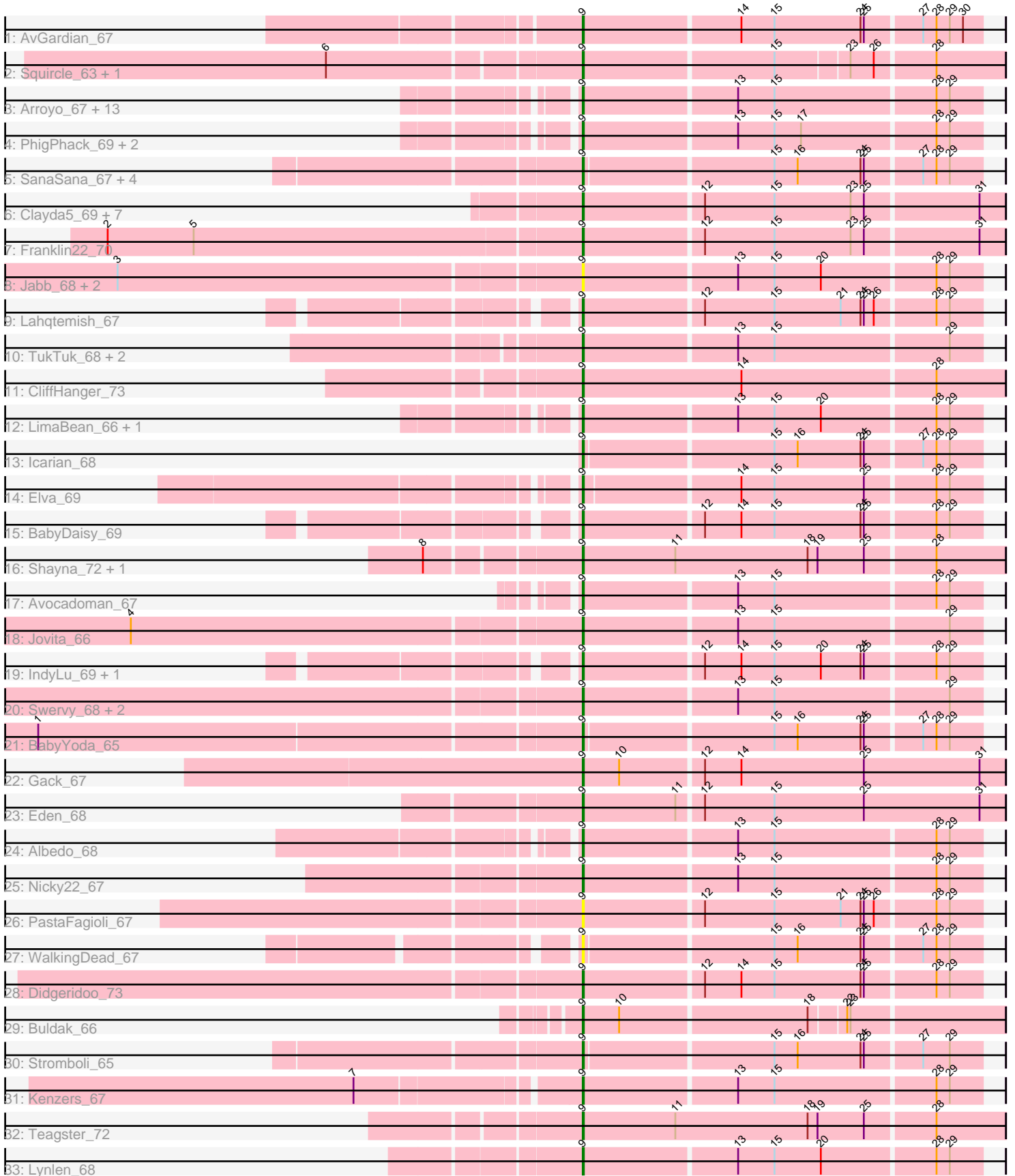


Pham 200199



Note: Tracks are now grouped by subcluster and scaled. Switching in subcluster is indicated by changes in track color. Track scale is now set by default to display the region 30 bp upstream of start 1 to 30 bp downstream of the last possible start. If this default region is judged to be packed too tightly with annotated starts, the track will be further scaled to only show that region of the ORF with annotated starts. This action will be indicated by adding "Zoomed" to the title. For starts, yellow indicates the location of called starts comprised solely of Glimmer/GeneMark auto-annotations, green indicates the location of called starts with at least 1 manual gene annotation.

Pham 200199 Report

This analysis was run 01/18/25 on database version 583.

Pham number 200199 has 69 members, 12 are drafts.

Phages represented in each track:

- Track 1 : AvGardian_67
- Track 2 : Squirrel_63, Olliecat_63
- Track 3 : Arroyo_67, DickRichards_65, Doobus_65, BubbaBear_66, Softsoap_68, Johnathan_66, Burritobowl_68, BelmontSKP_66, AnnaLie_66, SansAfet_68, QMacho_68, Abigail_66, Albright_66, Bengal_69
- Track 4 : PhigPhack_69, Phisb_68, Cashington_66
- Track 5 : SanaSana_67, Loviatar_111, Stoor_65, Akino08_111, DirtyBubble_65
- Track 6 : Clayda5_69, Bernstein_67, Rollins_67, Armstrong_67, Coltrane_67, Brahms_67, Skylord_67, Vitas_67
- Track 7 : Franklin22_70
- Track 8 : Jabb_68, CupcakePrincess_68, MsUbiquitous_68
- Track 9 : Lahqtemish_67
- Track 10 : TukTuk_68, Finalfrontier_67, Slay_68
- Track 11 : CliffHanger_73
- Track 12 : LimaBean_66, CroZenni_67
- Track 13 : Icarian_68
- Track 14 : Elva_69
- Track 15 : BabyDaisy_69
- Track 16 : Shayna_72, SunnyD_72
- Track 17 : Avocadoman_67
- Track 18 : Jovita_66
- Track 19 : IndyLu_69, Kate33_69
- Track 20 : Swervy_68, Eula_67, SarBear_68
- Track 21 : BabyYoda_65
- Track 22 : Gack_67
- Track 23 : Eden_68
- Track 24 : Albedo_68
- Track 25 : Nicky22_67
- Track 26 : PastaFagioli_67
- Track 27 : WalkingDead_67
- Track 28 : Didgeridoo_73
- Track 29 : Buldak_66
- Track 30 : Stromboli_65
- Track 31 : Kenzers_67
- Track 32 : Teagster_72
- Track 33 : Lynlen_68

Summary of Final Annotations (See graph section above for start numbers):

The start number called the most often in the published annotations is 9, it was called in 57 of the 57 non-draft genes in the pham.

Genes that call this "Most Annotated" start:

- Abigail_66, Akino08_111, Albedo_68, Albright_66, AnnaLie_66, Armstrong_67, Arroyo_67, AvGardian_67, Avocadoman_67, BabyDaisy_69, BabyYoda_65, BelmontSKP_66, Bengal_69, Bernstein_67, Brahms_67, BubbaBear_66, Buldak_66, Burritobowl_68, Cashington_66, Clayda5_69, CliffHanger_73, Coltrane_67, CroZenni_67, CupcakePrincess_68, DickRichards_65, Didgeridoo_73, DirtyBubble_65, Doobus_65, Eden_68, Elva_69, Eula_67, Finalfrontier_67, Franklin22_70, Gack_67, Icarian_68, IndyLu_69, Jabb_68, Johnathan_66, Jovita_66, Kate33_69, Kenzers_67, Lahqtemish_67, LimaBean_66, Loviatar_111, Lynlen_68, MsUbiquitous_68, Nicky22_67, Olliecat_63, PastaFagioli_67, PhigPhack_69, Phisb_68, QMacho_68, Rollins_67, SanaSana_67, SansAfet_68, SarBear_68, Shayna_72, Skylord_67, Slay_68, Softsoap_68, Squircle_63, Stoor_65, Stromboli_65, SunnyD_72, Swervy_68, Teagster_72, TukTuk_68, Vitas_67, WalkingDead_67,

Genes that have the "Most Annotated" start but do not call it:

-

Genes that do not have the "Most Annotated" start:

-

Summary by start number:

Start 9:

- Found in 69 of 69 (100.0%) of genes in pham
- Manual Annotations of this start: 57 of 57
- Called 100.0% of time when present
- Phage (with cluster) where this start called: Abigail_66 (EB), Akino08_111 (EB), Albedo_68 (EB), Albright_66 (EB), AnnaLie_66 (EB), Armstrong_67 (EB), Arroyo_67 (EB), AvGardian_67 (EB), Avocadoman_67 (EB), BabyDaisy_69 (EB), BabyYoda_65 (EB), BelmontSKP_66 (EB), Bengal_69 (EB), Bernstein_67 (EB), Brahms_67 (EB), BubbaBear_66 (EB), Buldak_66 (EB), Burritobowl_68 (EB), Cashington_66 (EB), Clayda5_69 (EB), CliffHanger_73 (EB), Coltrane_67 (EB), CroZenni_67 (EB), CupcakePrincess_68 (EB), DickRichards_65 (EB), Didgeridoo_73 (EB), DirtyBubble_65 (EB), Doobus_65 (EB), Eden_68 (EB), Elva_69 (EB), Eula_67 (EB), Finalfrontier_67 (EB), Franklin22_70 (EB), Gack_67 (EB), Icarian_68 (EB), IndyLu_69 (EB), Jabb_68 (EB), Johnathan_66 (EB), Jovita_66 (EB), Kate33_69 (EB), Kenzers_67 (EB), Lahqtemish_67 (EB), LimaBean_66 (EB), Loviatar_111 (EB), Lynlen_68 (EB), MsUbiquitous_68 (EB), Nicky22_67 (EB), Olliecat_63 (EB), PastaFagioli_67 (EB), PhigPhack_69 (EB), Phisb_68 (EB), QMacho_68 (EB), Rollins_67 (EB), SanaSana_67 (EB), SansAfet_68 (EB), SarBear_68 (EB), Shayna_72 (EB), Skylord_67 (EB), Slay_68 (EB), Softsoap_68 (EB), Squircle_63 (EB), Stoor_65 (EB), Stromboli_65 (EB), SunnyD_72 (EB), Swervy_68 (EB), Teagster_72 (EB), TukTuk_68 (EB), Vitas_67 (EB), WalkingDead_67 (EB),

Summary by clusters:

There is one cluster represented in this pham: EB

Info for manual annotations of cluster EB:

•Start number 9 was manually annotated 57 times for cluster EB.

Gene Information:

Gene: Abigail_66 Start: 39740, Stop: 40090, Start Num: 9

Candidate Starts for Abigail_66:

(Start: 9 @39740 has 57 MA's), (13, 39875), (15, 39908), (28, 40049), (29, 40061),

Gene: Akino08_111 Start: 41520, Stop: 41867, Start Num: 9

Candidate Starts for Akino08_111:

(Start: 9 @41520 has 57 MA's), (15, 41685), (16, 41706), (24, 41763), (25, 41766), (27, 41814), (28, 41826), (29, 41838),

Gene: Albedo_68 Start: 40661, Stop: 41011, Start Num: 9

Candidate Starts for Albedo_68:

(Start: 9 @40661 has 57 MA's), (13, 40796), (15, 40829), (28, 40970), (29, 40982),

Gene: Albright_66 Start: 39722, Stop: 40072, Start Num: 9

Candidate Starts for Albright_66:

(Start: 9 @39722 has 57 MA's), (13, 39857), (15, 39890), (28, 40031), (29, 40043),

Gene: AnnaLie_66 Start: 40401, Stop: 40751, Start Num: 9

Candidate Starts for AnnaLie_66:

(Start: 9 @40401 has 57 MA's), (13, 40536), (15, 40569), (28, 40710), (29, 40722),

Gene: Armstrong_67 Start: 38820, Stop: 39191, Start Num: 9

Candidate Starts for Armstrong_67:

(Start: 9 @38820 has 57 MA's), (12, 38925), (15, 38988), (23, 39057), (25, 39069), (31, 39168),

Gene: Arroyo_67 Start: 40865, Stop: 41215, Start Num: 9

Candidate Starts for Arroyo_67:

(Start: 9 @40865 has 57 MA's), (13, 41000), (15, 41033), (28, 41174), (29, 41186),

Gene: AvGardian_67 Start: 40487, Stop: 40837, Start Num: 9

Candidate Starts for AvGardian_67:

(Start: 9 @40487 has 57 MA's), (14, 40625), (15, 40655), (24, 40733), (25, 40736), (27, 40784), (28, 40796), (29, 40808), (30, 40820),

Gene: Avocadoman_67 Start: 40039, Stop: 40389, Start Num: 9

Candidate Starts for Avocadoman_67:

(Start: 9 @40039 has 57 MA's), (13, 40174), (15, 40207), (28, 40348), (29, 40360),

Gene: BabyDaisy_69 Start: 41209, Stop: 41559, Start Num: 9

Candidate Starts for BabyDaisy_69:

(Start: 9 @41209 has 57 MA's), (12, 41314), (14, 41347), (15, 41377), (24, 41455), (25, 41458), (28, 41518), (29, 41530),

Gene: BabyYoda_65 Start: 40429, Stop: 40776, Start Num: 9

Candidate Starts for BabyYoda_65:

(1, 39952), (Start: 9 @40429 has 57 MA's), (15, 40594), (16, 40615), (24, 40672), (25, 40675), (27, 40723), (28, 40735), (29, 40747),

Gene: BelmontSKP_66 Start: 40401, Stop: 40751, Start Num: 9

Candidate Starts for BelmontSKP_66:

(Start: 9 @40401 has 57 MA's), (13, 40536), (15, 40569), (28, 40710), (29, 40722),

Gene: Bengal_69 Start: 40632, Stop: 40982, Start Num: 9

Candidate Starts for Bengal_69:

(Start: 9 @40632 has 57 MA's), (13, 40767), (15, 40800), (28, 40941), (29, 40953),

Gene: Bernstein_67 Start: 38818, Stop: 39189, Start Num: 9

Candidate Starts for Bernstein_67:

(Start: 9 @38818 has 57 MA's), (12, 38923), (15, 38986), (23, 39055), (25, 39067), (31, 39166),

Gene: Brahms_67 Start: 38720, Stop: 39091, Start Num: 9

Candidate Starts for Brahms_67:

(Start: 9 @38720 has 57 MA's), (12, 38825), (15, 38888), (23, 38957), (25, 38969), (31, 39068),

Gene: BubbaBear_66 Start: 40653, Stop: 41003, Start Num: 9

Candidate Starts for BubbaBear_66:

(Start: 9 @40653 has 57 MA's), (13, 40788), (15, 40821), (28, 40962), (29, 40974),

Gene: Buldak_66 Start: 38230, Stop: 38595, Start Num: 9

Candidate Starts for Buldak_66:

(Start: 9 @38230 has 57 MA's), (10, 38263), (18, 38428), (22, 38458), (23, 38461),

Gene: Burritobowl_68 Start: 40223, Stop: 40573, Start Num: 9

Candidate Starts for Burritobowl_68:

(Start: 9 @40223 has 57 MA's), (13, 40358), (15, 40391), (28, 40532), (29, 40544),

Gene: Cashington_66 Start: 39964, Stop: 40314, Start Num: 9

Candidate Starts for Cashington_66:

(Start: 9 @39964 has 57 MA's), (13, 40099), (15, 40132), (17, 40156), (28, 40273), (29, 40285),

Gene: Clayda5_69 Start: 38786, Stop: 39157, Start Num: 9

Candidate Starts for Clayda5_69:

(Start: 9 @38786 has 57 MA's), (12, 38891), (15, 38954), (23, 39023), (25, 39035), (31, 39134),

Gene: CliffHanger_73 Start: 39507, Stop: 39884, Start Num: 9

Candidate Starts for CliffHanger_73:

(Start: 9 @39507 has 57 MA's), (14, 39651), (28, 39822),

Gene: Coltrane_67 Start: 38720, Stop: 39091, Start Num: 9

Candidate Starts for Coltrane_67:

(Start: 9 @38720 has 57 MA's), (12, 38825), (15, 38888), (23, 38957), (25, 38969), (31, 39068),

Gene: CroZenni_67 Start: 40208, Stop: 40558, Start Num: 9

Candidate Starts for CroZenni_67:

(Start: 9 @40208 has 57 MA's), (13, 40343), (15, 40376), (20, 40418), (28, 40517), (29, 40529),

Gene: CupcakePrincess_68 Start: 40528, Stop: 40878, Start Num: 9
Candidate Starts for CupcakePrincess_68:
(3, 40120), (Start: 9 @40528 has 57 MA's), (13, 40663), (15, 40696), (20, 40738), (28, 40837), (29, 40849),

Gene: DickRichards_65 Start: 40179, Stop: 40529, Start Num: 9
Candidate Starts for DickRichards_65:
(Start: 9 @40179 has 57 MA's), (13, 40314), (15, 40347), (28, 40488), (29, 40500),

Gene: Didgeridoo_73 Start: 41636, Stop: 41986, Start Num: 9
Candidate Starts for Didgeridoo_73:
(Start: 9 @41636 has 57 MA's), (12, 41741), (14, 41774), (15, 41804), (24, 41882), (25, 41885), (28, 41945), (29, 41957),

Gene: DirtyBubble_65 Start: 40468, Stop: 40815, Start Num: 9
Candidate Starts for DirtyBubble_65:
(Start: 9 @40468 has 57 MA's), (15, 40633), (16, 40654), (24, 40711), (25, 40714), (27, 40762), (28, 40774), (29, 40786),

Gene: Doobus_65 Start: 40034, Stop: 40384, Start Num: 9
Candidate Starts for Doobus_65:
(Start: 9 @40034 has 57 MA's), (13, 40169), (15, 40202), (28, 40343), (29, 40355),

Gene: Eden_68 Start: 39619, Stop: 39996, Start Num: 9
Candidate Starts for Eden_68:
(Start: 9 @39619 has 57 MA's), (11, 39703), (12, 39724), (15, 39787), (25, 39868), (31, 39973),

Gene: Elva_69 Start: 40991, Stop: 41338, Start Num: 9
Candidate Starts for Elva_69:
(Start: 9 @40991 has 57 MA's), (14, 41126), (15, 41156), (25, 41237), (28, 41297), (29, 41309),

Gene: Eula_67 Start: 40261, Stop: 40611, Start Num: 9
Candidate Starts for Eula_67:
(Start: 9 @40261 has 57 MA's), (13, 40396), (15, 40429), (29, 40582),

Gene: Finalfrontier_67 Start: 40928, Stop: 41278, Start Num: 9
Candidate Starts for Finalfrontier_67:
(Start: 9 @40928 has 57 MA's), (13, 41063), (15, 41096), (29, 41249),

Gene: Franklin22_70 Start: 39362, Stop: 39733, Start Num: 9
Candidate Starts for Franklin22_70:
(2, 38942), (5, 39020), (Start: 9 @39362 has 57 MA's), (12, 39467), (15, 39530), (23, 39599), (25, 39611), (31, 39710),

Gene: Gack_67 Start: 39302, Stop: 39679, Start Num: 9
Candidate Starts for Gack_67:
(Start: 9 @39302 has 57 MA's), (10, 39335), (12, 39407), (14, 39440), (25, 39551), (31, 39656),

Gene: Icarian_68 Start: 41170, Stop: 41517, Start Num: 9
Candidate Starts for Icarian_68:
(Start: 9 @41170 has 57 MA's), (15, 41335), (16, 41356), (24, 41413), (25, 41416), (27, 41464), (28, 41476), (29, 41488),

Gene: IndyLu_69 Start: 40940, Stop: 41290, Start Num: 9
Candidate Starts for IndyLu_69:
(Start: 9 @40940 has 57 MA's), (12, 41045), (14, 41078), (15, 41108), (20, 41150), (24, 41186), (25, 41189), (28, 41249), (29, 41261),

Gene: Jabb_68 Start: 40528, Stop: 40878, Start Num: 9
Candidate Starts for Jabb_68:
(3, 40120), (Start: 9 @40528 has 57 MA's), (13, 40663), (15, 40696), (20, 40738), (28, 40837), (29, 40849),

Gene: Johnathan_66 Start: 39723, Stop: 40073, Start Num: 9
Candidate Starts for Johnathan_66:
(Start: 9 @39723 has 57 MA's), (13, 39858), (15, 39891), (28, 40032), (29, 40044),

Gene: Jovita_66 Start: 40029, Stop: 40379, Start Num: 9
Candidate Starts for Jovita_66:
(4, 39633), (Start: 9 @40029 has 57 MA's), (13, 40164), (15, 40197), (29, 40350),

Gene: Kate33_69 Start: 40670, Stop: 41020, Start Num: 9
Candidate Starts for Kate33_69:
(Start: 9 @40670 has 57 MA's), (12, 40775), (14, 40808), (15, 40838), (20, 40880), (24, 40916), (25, 40919), (28, 40979), (29, 40991),

Gene: Kenzers_67 Start: 40109, Stop: 40459, Start Num: 9
Candidate Starts for Kenzers_67:
(7, 39932), (Start: 9 @40109 has 57 MA's), (13, 40244), (15, 40277), (28, 40418), (29, 40430),

Gene: Lahqtemish_67 Start: 41142, Stop: 41492, Start Num: 9
Candidate Starts for Lahqtemish_67:
(Start: 9 @41142 has 57 MA's), (12, 41247), (15, 41310), (21, 41370), (24, 41388), (25, 41391), (26, 41400), (28, 41451), (29, 41463),

Gene: LimaBean_66 Start: 39617, Stop: 39967, Start Num: 9
Candidate Starts for LimaBean_66:
(Start: 9 @39617 has 57 MA's), (13, 39752), (15, 39785), (20, 39827), (28, 39926), (29, 39938),

Gene: Loviatar_111 Start: 41536, Stop: 41883, Start Num: 9
Candidate Starts for Loviatar_111:
(Start: 9 @41536 has 57 MA's), (15, 41701), (16, 41722), (24, 41779), (25, 41782), (27, 41830), (28, 41842), (29, 41854),

Gene: Lynlen_68 Start: 40262, Stop: 40612, Start Num: 9
Candidate Starts for Lynlen_68:
(Start: 9 @40262 has 57 MA's), (13, 40397), (15, 40430), (20, 40472), (28, 40571), (29, 40583),

Gene: MsUbiquitous_68 Start: 40528, Stop: 40878, Start Num: 9
Candidate Starts for MsUbiquitous_68:
(3, 40120), (Start: 9 @40528 has 57 MA's), (13, 40663), (15, 40696), (20, 40738), (28, 40837), (29, 40849),

Gene: Nicky22_67 Start: 40704, Stop: 41054, Start Num: 9
Candidate Starts for Nicky22_67:

(Start: 9 @40704 has 57 MA's), (13, 40839), (15, 40872), (28, 41013), (29, 41025),

Gene: Olliecat_63 Start: 37835, Stop: 38200, Start Num: 9

Candidate Starts for Olliecat_63:

(6, 37619), (Start: 9 @37835 has 57 MA's), (15, 38003), (23, 38066), (26, 38087), (28, 38138),

Gene: PastaFagioli_67 Start: 41210, Stop: 41560, Start Num: 9

Candidate Starts for PastaFagioli_67:

(Start: 9 @41210 has 57 MA's), (12, 41315), (15, 41378), (21, 41438), (24, 41456), (25, 41459), (26, 41468), (28, 41519), (29, 41531),

Gene: PhigPhack_69 Start: 40319, Stop: 40669, Start Num: 9

Candidate Starts for PhigPhack_69:

(Start: 9 @40319 has 57 MA's), (13, 40454), (15, 40487), (17, 40511), (28, 40628), (29, 40640),

Gene: Phisb_68 Start: 40292, Stop: 40642, Start Num: 9

Candidate Starts for Phisb_68:

(Start: 9 @40292 has 57 MA's), (13, 40427), (15, 40460), (17, 40484), (28, 40601), (29, 40613),

Gene: QMacho_68 Start: 40423, Stop: 40773, Start Num: 9

Candidate Starts for QMacho_68:

(Start: 9 @40423 has 57 MA's), (13, 40558), (15, 40591), (28, 40732), (29, 40744),

Gene: Rollins_67 Start: 38818, Stop: 39189, Start Num: 9

Candidate Starts for Rollins_67:

(Start: 9 @38818 has 57 MA's), (12, 38923), (15, 38986), (23, 39055), (25, 39067), (31, 39166),

Gene: SanaSana_67 Start: 40879, Stop: 41226, Start Num: 9

Candidate Starts for SanaSana_67:

(Start: 9 @40879 has 57 MA's), (15, 41044), (16, 41065), (24, 41122), (25, 41125), (27, 41173), (28, 41185), (29, 41197),

Gene: SansAfet_68 Start: 40268, Stop: 40618, Start Num: 9

Candidate Starts for SansAfet_68:

(Start: 9 @40268 has 57 MA's), (13, 40403), (15, 40436), (28, 40577), (29, 40589),

Gene: SarBear_68 Start: 40354, Stop: 40704, Start Num: 9

Candidate Starts for SarBear_68:

(Start: 9 @40354 has 57 MA's), (13, 40489), (15, 40522), (29, 40675),

Gene: Shayna_72 Start: 40114, Stop: 40491, Start Num: 9

Candidate Starts for Shayna_72:

(8, 39985), (Start: 9 @40114 has 57 MA's), (11, 40198), (18, 40318), (19, 40327), (25, 40369), (28, 40429),

Gene: Skylord_67 Start: 38735, Stop: 39106, Start Num: 9

Candidate Starts for Skylord_67:

(Start: 9 @38735 has 57 MA's), (12, 38840), (15, 38903), (23, 38972), (25, 38984), (31, 39083),

Gene: Slay_68 Start: 40803, Stop: 41153, Start Num: 9

Candidate Starts for Slay_68:

(Start: 9 @40803 has 57 MA's), (13, 40938), (15, 40971), (29, 41124),

Gene: Softsoap_68 Start: 40491, Stop: 40841, Start Num: 9

Candidate Starts for Softsoap_68:

(Start: 9 @40491 has 57 MA's), (13, 40626), (15, 40659), (28, 40800), (29, 40812),

Gene: Squiracle_63 Start: 37834, Stop: 38199, Start Num: 9

Candidate Starts for Squiracle_63:

(6, 37618), (Start: 9 @37834 has 57 MA's), (15, 38002), (23, 38065), (26, 38086), (28, 38137),

Gene: Stoor_65 Start: 40666, Stop: 41013, Start Num: 9

Candidate Starts for Stoor_65:

(Start: 9 @40666 has 57 MA's), (15, 40831), (16, 40852), (24, 40909), (25, 40912), (27, 40960), (28, 40972), (29, 40984),

Gene: Stromboli_65 Start: 40467, Stop: 40814, Start Num: 9

Candidate Starts for Stromboli_65:

(Start: 9 @40467 has 57 MA's), (15, 40632), (16, 40653), (24, 40710), (25, 40713), (27, 40761), (29, 40785),

Gene: SunnyD_72 Start: 40114, Stop: 40491, Start Num: 9

Candidate Starts for SunnyD_72:

(8, 39985), (Start: 9 @40114 has 57 MA's), (11, 40198), (18, 40318), (19, 40327), (25, 40369), (28, 40429),

Gene: Swervy_68 Start: 40391, Stop: 40741, Start Num: 9

Candidate Starts for Swervy_68:

(Start: 9 @40391 has 57 MA's), (13, 40526), (15, 40559), (29, 40712),

Gene: Teagster_72 Start: 40532, Stop: 40909, Start Num: 9

Candidate Starts for Teagster_72:

(Start: 9 @40532 has 57 MA's), (11, 40616), (18, 40736), (19, 40745), (25, 40787), (28, 40847),

Gene: TukTuk_68 Start: 40582, Stop: 40932, Start Num: 9

Candidate Starts for TukTuk_68:

(Start: 9 @40582 has 57 MA's), (13, 40717), (15, 40750), (29, 40903),

Gene: Vitas_67 Start: 38791, Stop: 39162, Start Num: 9

Candidate Starts for Vitas_67:

(Start: 9 @38791 has 57 MA's), (12, 38896), (15, 38959), (23, 39028), (25, 39040), (31, 39139),

Gene: WalkingDead_67 Start: 41328, Stop: 41675, Start Num: 9

Candidate Starts for WalkingDead_67:

(Start: 9 @41328 has 57 MA's), (15, 41493), (16, 41514), (24, 41571), (25, 41574), (27, 41622), (28, 41634), (29, 41646),