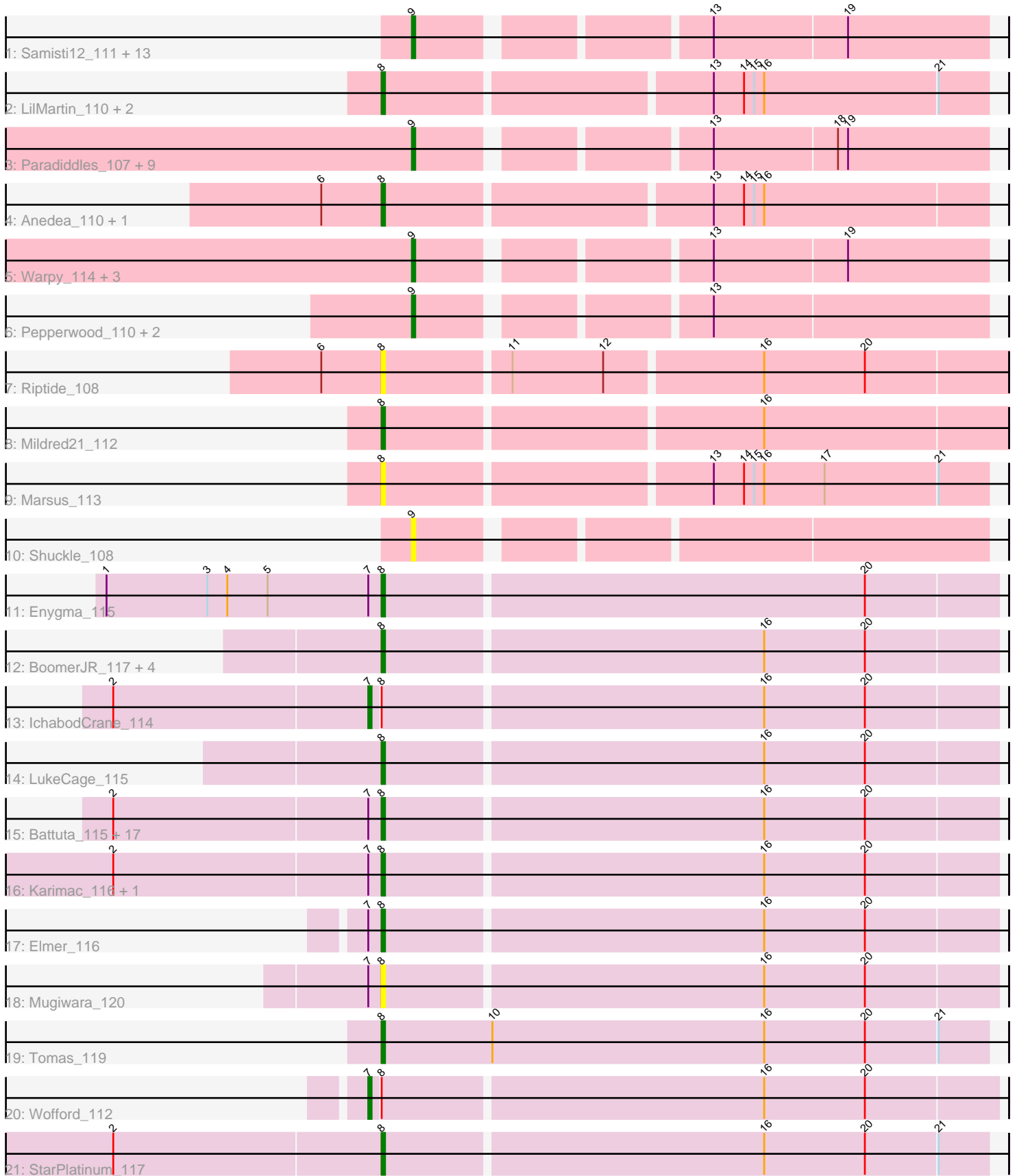


Pham 200230



Note: Tracks are now grouped by subcluster and scaled. Switching in subcluster is indicated by changes in track color. Track scale is now set by default to display the region 30 bp upstream of start 1 to 30 bp downstream of the last possible start. If this default region is judged to be packed too tightly with annotated starts, the track will be further scaled to only show that region of the ORF with annotated starts. This action will be indicated by adding "Zoomed" to the title. For starts, yellow indicates the location of called starts comprised solely of Glimmer/GeneMark auto-annotations, green indicates the location of called starts with at least 1 manual gene annotation.

Pham 200230 Report

This analysis was run 01/18/25 on database version 583.

Pham number 200230 has 73 members, 8 are drafts.

Phages represented in each track:

- Track 1 : Samisti12_111, BlueOtter_110, Watermoore_109, Cursive_108, HangryHippo_110, Teutsch_110, PacManQ_109, Leo04_111, Scheme_112, Cross_110, Peebs_109, Larnav_110, Lululemon_109, EGole_113
- Track 2 : LilMartin_110, Angela_110, MulchMansion_110
- Track 3 : Paradiddles_107, Navo_109, Braelyn_113, Liandry_111, Persimmon_111, WhereRU_109, PinkiePie_110, NootNoot_108, Squillium_112, Bartholomune_111
- Track 4 : Anedea_110, Bmoc_111
- Track 5 : Warpy_114, Targaryen_111, Evy_110, Jay2Jay_115
- Track 6 : Pepperwood_110, Tribute_109, Sushi23_110
- Track 7 : Riptide_108
- Track 8 : Mildred21_112
- Track 9 : Marsus_113
- Track 10 : Shuckle_108
- Track 11 : Enygma_115
- Track 12 : BoomerJR_117, Genie2_117, Yaboi_117, Stanimal_116, Sollertia_116
- Track 13 : IchabodCrane_114
- Track 14 : LukeCage_115
- Track 15 : Battuta_115, Wipeout_114, Rikishi_120, KentuckyRacer_118, Jollison_116, MindFlayer_114, Bordeaux_115, Starbow_115, PumpkinSpice_117, Amabiko_117, Spelly_117, Quarant19_116, TomSawyer_117, Birchlyn_114, JimJam_118, Gibbi_122, CeilingFan_121, SaltySpittoon_116
- Track 16 : Karimac_116, Spilled_118
- Track 17 : Elmer_116
- Track 18 : Mugiwara_120
- Track 19 : Tomas_119
- Track 20 : Wofford_112
- Track 21 : StarPlatinum_117

Summary of Final Annotations (See graph section above for start numbers):

The start number called the most often in the published annotations is 8, it was called in 33 of the 65 non-draft genes in the pham.

Genes that call this "Most Annotated" start:

- Amabiko_117, Anedea_110, Angela_110, Battuta_115, Birchlyn_114, Bmoc_111, BoomerJR_117, Bordeaux_115, CeilingFan_121, Elmer_116, Enygma_115, Genie2_117, Gibbi_122, JimJam_118, Jollison_116, Karimac_116, KentuckyRacer_118, LilMartin_110, LukeCage_115, Marsus_113, Mildred21_112, MindFlayer_114, Mugiwara_120, MulchMansion_110, PumpkinSpice_117, Quaran19_116, Rikishi_120, Riptide_108, SaltySpitooon_116, Sollertia_116, Spelly_117, Spilled_118, Stanimal_116, StarPlatinum_117, Starbow_115, TomSawyer_117, Tomas_119, Wipeout_114, Yaboi_117,

Genes that have the "Most Annotated" start but do not call it:

- IchabodCrane_114, Wofford_112,

Genes that do not have the "Most Annotated" start:

- Bartholomune_111, BlueOtter_110, Braelyn_113, Cross_110, Cursive_108, EGole_113, Evy_110, HangryHippo_110, Jay2Jay_115, Larnav_110, Leo04_111, Liandry_111, Lululemon_109, Navo_109, NootNoot_108, PacManQ_109, Paradiddles_107, Peebs_109, Pepperwood_110, Persimmon_111, PinkiePie_110, Samisti12_111, Scheme_112, Shuckle_108, Squillium_112, Sushi23_110, Targaryen_111, Teutsch_110, Tribute_109, Warpy_114, Watermoore_109, WhereRU_109,

Summary by start number:

Start 7:

- Found in 25 of 73 (34.2%) of genes in pham
- Manual Annotations of this start: 2 of 65
- Called 8.0% of time when present
- Phage (with cluster) where this start called: IchabodCrane_114 (BE2), Wofford_112 (BE2),

Start 8:

- Found in 41 of 73 (56.2%) of genes in pham
- Manual Annotations of this start: 33 of 65
- Called 95.1% of time when present
- Phage (with cluster) where this start called: Amabiko_117 (BE2), Anedea_110 (BE1), Angela_110 (BE1), Battuta_115 (BE2), Birchlyn_114 (BE2), Bmoc_111 (BE1), BoomerJR_117 (BE2), Bordeaux_115 (BE2), CeilingFan_121 (BE2), Elmer_116 (BE2), Enygma_115 (BE2), Genie2_117 (BE2), Gibbi_122 (BE2), JimJam_118 (BE2), Jollison_116 (BE2), Karimac_116 (BE2), KentuckyRacer_118 (BE2), LilMartin_110 (BE1), LukeCage_115 (BE2), Marsus_113 (BE1), Mildred21_112 (BE1), MindFlayer_114 (BE2), Mugiwara_120 (BE2), MulchMansion_110 (BE1), PumpkinSpice_117 (BE2), Quaran19_116 (BE2), Rikishi_120 (BE2), Riptide_108 (BE1), SaltySpitooon_116 (BE2), Sollertia_116 (BE2), Spelly_117 (BE2), Spilled_118 (BE2), Stanimal_116 (BE2), StarPlatinum_117 (BE2), Starbow_115 (BE2), TomSawyer_117 (BE2), Tomas_119 (BE2), Wipeout_114 (BE2), Yaboi_117 (BE2),

Start 9:

- Found in 32 of 73 (43.8%) of genes in pham
- Manual Annotations of this start: 30 of 65
- Called 100.0% of time when present
- Phage (with cluster) where this start called: Bartholomune_111 (BE1), BlueOtter_110 (BE1), Braelyn_113 (BE1), Cross_110 (BE1), Cursive_108 (BE1), EGole_113 (BE1), Evy_110 (BE1), HangryHippo_110 (BE1), Jay2Jay_115 (BE1),

Larnav_110 (BE1), Leo04_111 (BE1), Liandry_111 (BE1), Lululemon_109 (BE1), Navo_109 (BE1), NootNoot_108 (BE1), PacManQ_109 (BE1), Paradiddles_107 (BE1), Peebs_109 (BE1), Pepperwood_110 (BE1), Persimmon_111 (BE1), PinkiePie_110 (BE1), Samisti12_111 (BE1), Scheme_112 (BE1), Shuckle_108 (BE1), Squillium_112 (BE1), Sushi23_110 (BE1), Targaryen_111 (BE1), Teutsch_110 (BE1), Tribute_109 (BE1), Warpy_114 (BE1), Watermoore_109 (BE1), WhereRU_109 (BE1),

Summary by clusters:

There are 2 clusters represented in this pham: BE2, BE1,

Info for manual annotations of cluster BE1:

- Start number 8 was manually annotated 6 times for cluster BE1.
- Start number 9 was manually annotated 30 times for cluster BE1.

Info for manual annotations of cluster BE2:

- Start number 7 was manually annotated 2 times for cluster BE2.
- Start number 8 was manually annotated 27 times for cluster BE2.

Gene Information:

Gene: Amabiko_117 Start: 77265, Stop: 77444, Start Num: 8

Candidate Starts for Amabiko_117:

(2, 77187), (Start: 7 @77262 has 2 MA's), (Start: 8 @77265 has 33 MA's), (16, 77376), (20, 77406),

Gene: Anedea_110 Start: 75835, Stop: 76008, Start Num: 8

Candidate Starts for Anedea_110:

(6, 75817), (Start: 8 @75835 has 33 MA's), (13, 75928), (14, 75937), (15, 75940), (16, 75943),

Gene: Angela_110 Start: 76178, Stop: 76351, Start Num: 8

Candidate Starts for Angela_110:

(Start: 8 @76178 has 33 MA's), (13, 76271), (14, 76280), (15, 76283), (16, 76286), (21, 76337),

Gene: Bartholomune_111 Start: 76652, Stop: 76810, Start Num: 9

Candidate Starts for Bartholomune_111:

(Start: 9 @76652 has 30 MA's), (13, 76730), (18, 76766), (19, 76769),

Gene: Battuta_115 Start: 77239, Stop: 77418, Start Num: 8

Candidate Starts for Battuta_115:

(2, 77161), (Start: 7 @77236 has 2 MA's), (Start: 8 @77239 has 33 MA's), (16, 77350), (20, 77380),

Gene: Birchlyn_114 Start: 75125, Stop: 75304, Start Num: 8

Candidate Starts for Birchlyn_114:

(2, 75047), (Start: 7 @75122 has 2 MA's), (Start: 8 @75125 has 33 MA's), (16, 75236), (20, 75266),

Gene: BlueOtter_110 Start: 77063, Stop: 77221, Start Num: 9

Candidate Starts for BlueOtter_110:

(Start: 9 @77063 has 30 MA's), (13, 77141), (19, 77180),

Gene: Bmoc_111 Start: 76263, Stop: 76436, Start Num: 8

Candidate Starts for Bmoc_111:

(6, 76245), (Start: 8 @76263 has 33 MA's), (13, 76356), (14, 76365), (15, 76368), (16, 76371),

Gene: BoomerJR_117 Start: 77305, Stop: 77484, Start Num: 8

Candidate Starts for BoomerJR_117:

(Start: 8 @77305 has 33 MA's), (16, 77416), (20, 77446),

Gene: Bordeaux_115 Start: 77394, Stop: 77573, Start Num: 8

Candidate Starts for Bordeaux_115:

(2, 77316), (Start: 7 @77391 has 2 MA's), (Start: 8 @77394 has 33 MA's), (16, 77505), (20, 77535),

Gene: Braelyn_113 Start: 77537, Stop: 77695, Start Num: 9

Candidate Starts for Braelyn_113:

(Start: 9 @77537 has 30 MA's), (13, 77615), (18, 77651), (19, 77654),

Gene: CeilingFan_121 Start: 77157, Stop: 77336, Start Num: 8

Candidate Starts for CeilingFan_121:

(2, 77079), (Start: 7 @77154 has 2 MA's), (Start: 8 @77157 has 33 MA's), (16, 77268), (20, 77298),

Gene: Cross_110 Start: 77064, Stop: 77222, Start Num: 9

Candidate Starts for Cross_110:

(Start: 9 @77064 has 30 MA's), (13, 77142), (19, 77181),

Gene: Cursive_108 Start: 76589, Stop: 76747, Start Num: 9

Candidate Starts for Cursive_108:

(Start: 9 @76589 has 30 MA's), (13, 76667), (19, 76706),

Gene: EGole_113 Start: 77908, Stop: 78066, Start Num: 9

Candidate Starts for EGole_113:

(Start: 9 @77908 has 30 MA's), (13, 77986), (19, 78025),

Gene: Elmer_116 Start: 78466, Stop: 78645, Start Num: 8

Candidate Starts for Elmer_116:

(Start: 7 @78463 has 2 MA's), (Start: 8 @78466 has 33 MA's), (16, 78577), (20, 78607),

Gene: Enygma_115 Start: 78780, Stop: 78959, Start Num: 8

Candidate Starts for Enygma_115:

(1, 78699), (3, 78729), (4, 78735), (5, 78747), (Start: 7 @78777 has 2 MA's), (Start: 8 @78780 has 33 MA's), (20, 78921),

Gene: Evy_110 Start: 76919, Stop: 77077, Start Num: 9

Candidate Starts for Evy_110:

(Start: 9 @76919 has 30 MA's), (13, 76997), (19, 77036),

Gene: Genie2_117 Start: 77419, Stop: 77598, Start Num: 8

Candidate Starts for Genie2_117:

(Start: 8 @77419 has 33 MA's), (16, 77530), (20, 77560),

Gene: Gibbi_122 Start: 77377, Stop: 77556, Start Num: 8

Candidate Starts for Gibbi_122:

(2, 77299), (Start: 7 @77374 has 2 MA's), (Start: 8 @77377 has 33 MA's), (16, 77488), (20, 77518),

Gene: HangryHippo_110 Start: 77063, Stop: 77221, Start Num: 9

Candidate Starts for HangryHippo_110:

(Start: 9 @77063 has 30 MA's), (13, 77141), (19, 77180),

Gene: IchabodCrane_114 Start: 76963, Stop: 77145, Start Num: 7

Candidate Starts for IchabodCrane_114:

(2, 76888), (Start: 7 @76963 has 2 MA's), (Start: 8 @76966 has 33 MA's), (16, 77077), (20, 77107),

Gene: Jay2Jay_115 Start: 77860, Stop: 78018, Start Num: 9

Candidate Starts for Jay2Jay_115:

(Start: 9 @77860 has 30 MA's), (13, 77938), (19, 77977),

Gene: JimJam_118 Start: 77788, Stop: 77967, Start Num: 8

Candidate Starts for JimJam_118:

(2, 77710), (Start: 7 @77785 has 2 MA's), (Start: 8 @77788 has 33 MA's), (16, 77899), (20, 77929),

Gene: Jollison_116 Start: 77222, Stop: 77401, Start Num: 8

Candidate Starts for Jollison_116:

(2, 77144), (Start: 7 @77219 has 2 MA's), (Start: 8 @77222 has 33 MA's), (16, 77333), (20, 77363),

Gene: Karimac_116 Start: 77503, Stop: 77682, Start Num: 8

Candidate Starts for Karimac_116:

(2, 77425), (Start: 7 @77500 has 2 MA's), (Start: 8 @77503 has 33 MA's), (16, 77614), (20, 77644),

Gene: KentuckyRacer_118 Start: 77652, Stop: 77831, Start Num: 8

Candidate Starts for KentuckyRacer_118:

(2, 77574), (Start: 7 @77649 has 2 MA's), (Start: 8 @77652 has 33 MA's), (16, 77763), (20, 77793),

Gene: Larnav_110 Start: 77048, Stop: 77206, Start Num: 9

Candidate Starts for Larnav_110:

(Start: 9 @77048 has 30 MA's), (13, 77126), (19, 77165),

Gene: Leo04_111 Start: 77563, Stop: 77721, Start Num: 9

Candidate Starts for Leo04_111:

(Start: 9 @77563 has 30 MA's), (13, 77641), (19, 77680),

Gene: Liandry_111 Start: 77401, Stop: 77559, Start Num: 9

Candidate Starts for Liandry_111:

(Start: 9 @77401 has 30 MA's), (13, 77479), (18, 77515), (19, 77518),

Gene: LilMartin_110 Start: 76126, Stop: 76299, Start Num: 8

Candidate Starts for LilMartin_110:

(Start: 8 @76126 has 33 MA's), (13, 76219), (14, 76228), (15, 76231), (16, 76234), (21, 76285),

Gene: LukeCage_115 Start: 77173, Stop: 77352, Start Num: 8

Candidate Starts for LukeCage_115:

(Start: 8 @77173 has 33 MA's), (16, 77284), (20, 77314),

Gene: Lululemon_109 Start: 76444, Stop: 76602, Start Num: 9

Candidate Starts for Lululemon_109:

(Start: 9 @76444 has 30 MA's), (13, 76522), (19, 76561),

Gene: Marsus_113 Start: 76597, Stop: 76770, Start Num: 8

Candidate Starts for Marsus_113:

(Start: 8 @76597 has 33 MA's), (13, 76690), (14, 76699), (15, 76702), (16, 76705), (17, 76723), (21, 76756),

Gene: Mildred21_112 Start: 76359, Stop: 76538, Start Num: 8

Candidate Starts for Mildred21_112:

(Start: 8 @76359 has 33 MA's), (16, 76467),

Gene: MindFlayer_114 Start: 76873, Stop: 77052, Start Num: 8

Candidate Starts for MindFlayer_114:

(2, 76795), (Start: 7 @76870 has 2 MA's), (Start: 8 @76873 has 33 MA's), (16, 76984), (20, 77014),

Gene: Mugiwara_120 Start: 77757, Stop: 77936, Start Num: 8

Candidate Starts for Mugiwara_120:

(Start: 7 @77754 has 2 MA's), (Start: 8 @77757 has 33 MA's), (16, 77868), (20, 77898),

Gene: MulchMansion_110 Start: 76126, Stop: 76299, Start Num: 8

Candidate Starts for MulchMansion_110:

(Start: 8 @76126 has 33 MA's), (13, 76219), (14, 76228), (15, 76231), (16, 76234), (21, 76285),

Gene: Navo_109 Start: 77199, Stop: 77357, Start Num: 9

Candidate Starts for Navo_109:

(Start: 9 @77199 has 30 MA's), (13, 77277), (18, 77313), (19, 77316),

Gene: NootNoot_108 Start: 76315, Stop: 76473, Start Num: 9

Candidate Starts for NootNoot_108:

(Start: 9 @76315 has 30 MA's), (13, 76393), (18, 76429), (19, 76432),

Gene: PacManQ_109 Start: 76444, Stop: 76602, Start Num: 9

Candidate Starts for PacManQ_109:

(Start: 9 @76444 has 30 MA's), (13, 76522), (19, 76561),

Gene: Paradiddles_107 Start: 76464, Stop: 76622, Start Num: 9

Candidate Starts for Paradiddles_107:

(Start: 9 @76464 has 30 MA's), (13, 76542), (18, 76578), (19, 76581),

Gene: Peebs_109 Start: 76861, Stop: 77019, Start Num: 9

Candidate Starts for Peebs_109:

(Start: 9 @76861 has 30 MA's), (13, 76939), (19, 76978),

Gene: Pepperwood_110 Start: 76992, Stop: 77150, Start Num: 9

Candidate Starts for Pepperwood_110:

(Start: 9 @76992 has 30 MA's), (13, 77070),

Gene: Persimmon_111 Start: 76249, Stop: 76407, Start Num: 9

Candidate Starts for Persimmon_111:

(Start: 9 @76249 has 30 MA's), (13, 76327), (18, 76363), (19, 76366),

Gene: PinkiePie_110 Start: 77401, Stop: 77559, Start Num: 9

Candidate Starts for PinkiePie_110:

(Start: 9 @77401 has 30 MA's), (13, 77479), (18, 77515), (19, 77518),

Gene: PumpkinSpice_117 Start: 77831, Stop: 78010, Start Num: 8

Candidate Starts for PumpkinSpice_117:

(2, 77753), (Start: 7 @77828 has 2 MA's), (Start: 8 @77831 has 33 MA's), (16, 77942), (20, 77972),

Gene: Quaran19_116 Start: 77256, Stop: 77435, Start Num: 8

Candidate Starts for Quaran19_116:

(2, 77178), (Start: 7 @77253 has 2 MA's), (Start: 8 @77256 has 33 MA's), (16, 77367), (20, 77397),

Gene: Rikishi_120 Start: 77171, Stop: 77350, Start Num: 8

Candidate Starts for Rikishi_120:

(2, 77093), (Start: 7 @77168 has 2 MA's), (Start: 8 @77171 has 33 MA's), (16, 77282), (20, 77312),

Gene: Riptide_108 Start: 75108, Stop: 75287, Start Num: 8

Candidate Starts for Riptide_108:

(6, 75090), (Start: 8 @75108 has 33 MA's), (11, 75144), (12, 75171), (16, 75216), (20, 75246),

Gene: SaltySpittoon_116 Start: 77268, Stop: 77447, Start Num: 8

Candidate Starts for SaltySpittoon_116:

(2, 77190), (Start: 7 @77265 has 2 MA's), (Start: 8 @77268 has 33 MA's), (16, 77379), (20, 77409),

Gene: Samisti12_111 Start: 78240, Stop: 78398, Start Num: 9

Candidate Starts for Samisti12_111:

(Start: 9 @78240 has 30 MA's), (13, 78318), (19, 78357),

Gene: Scheme_112 Start: 77645, Stop: 77803, Start Num: 9

Candidate Starts for Scheme_112:

(Start: 9 @77645 has 30 MA's), (13, 77723), (19, 77762),

Gene: Shuckle_108 Start: 77370, Stop: 77528, Start Num: 9

Candidate Starts for Shuckle_108:

(Start: 9 @77370 has 30 MA's),

Gene: Sollertia_116 Start: 77419, Stop: 77598, Start Num: 8

Candidate Starts for Sollertia_116:

(Start: 8 @77419 has 33 MA's), (16, 77530), (20, 77560),

Gene: Spelly_117 Start: 77220, Stop: 77399, Start Num: 8

Candidate Starts for Spelly_117:

(2, 77142), (Start: 7 @77217 has 2 MA's), (Start: 8 @77220 has 33 MA's), (16, 77331), (20, 77361),

Gene: Spilled_118 Start: 77337, Stop: 77516, Start Num: 8

Candidate Starts for Spilled_118:

(2, 77259), (Start: 7 @77334 has 2 MA's), (Start: 8 @77337 has 33 MA's), (16, 77448), (20, 77478),

Gene: Squillium_112 Start: 77402, Stop: 77560, Start Num: 9

Candidate Starts for Squillium_112:

(Start: 9 @77402 has 30 MA's), (13, 77480), (18, 77516), (19, 77519),

Gene: Stanimal_116 Start: 77308, Stop: 77487, Start Num: 8

Candidate Starts for Stanimal_116:

(Start: 8 @77308 has 33 MA's), (16, 77419), (20, 77449),

Gene: StarPlatinum_117 Start: 78051, Stop: 78227, Start Num: 8

Candidate Starts for StarPlatinum_117:

(2, 77973), (Start: 8 @78051 has 33 MA's), (16, 78162), (20, 78192), (21, 78213),

Gene: Starbow_115 Start: 77241, Stop: 77420, Start Num: 8
Candidate Starts for Starbow_115:
(2, 77163), (Start: 7 @77238 has 2 MA's), (Start: 8 @77241 has 33 MA's), (16, 77352), (20, 77382),

Gene: Sushi23_110 Start: 77217, Stop: 77375, Start Num: 9
Candidate Starts for Sushi23_110:
(Start: 9 @77217 has 30 MA's), (13, 77295),

Gene: Targaryen_111 Start: 77906, Stop: 78064, Start Num: 9
Candidate Starts for Targaryen_111:
(Start: 9 @77906 has 30 MA's), (13, 77984), (19, 78023),

Gene: Teutsch_110 Start: 77419, Stop: 77577, Start Num: 9
Candidate Starts for Teutsch_110:
(Start: 9 @77419 has 30 MA's), (13, 77497), (19, 77536),

Gene: TomSawyer_117 Start: 77286, Stop: 77465, Start Num: 8
Candidate Starts for TomSawyer_117:
(2, 77208), (Start: 7 @77283 has 2 MA's), (Start: 8 @77286 has 33 MA's), (16, 77397), (20, 77427),

Gene: Tomas_119 Start: 79170, Stop: 79349, Start Num: 8
Candidate Starts for Tomas_119:
(Start: 8 @79170 has 33 MA's), (10, 79203), (16, 79284), (20, 79314), (21, 79335),

Gene: Tribute_109 Start: 77104, Stop: 77262, Start Num: 9
Candidate Starts for Tribute_109:
(Start: 9 @77104 has 30 MA's), (13, 77182),

Gene: Warpy_114 Start: 77369, Stop: 77527, Start Num: 9
Candidate Starts for Warpy_114:
(Start: 9 @77369 has 30 MA's), (13, 77447), (19, 77486),

Gene: Watermoore_109 Start: 77635, Stop: 77793, Start Num: 9
Candidate Starts for Watermoore_109:
(Start: 9 @77635 has 30 MA's), (13, 77713), (19, 77752),

Gene: WhereRU_109 Start: 76994, Stop: 77152, Start Num: 9
Candidate Starts for WhereRU_109:
(Start: 9 @76994 has 30 MA's), (13, 77072), (18, 77108), (19, 77111),

Gene: Wipeout_114 Start: 77610, Stop: 77789, Start Num: 8
Candidate Starts for Wipeout_114:
(2, 77532), (Start: 7 @77607 has 2 MA's), (Start: 8 @77610 has 33 MA's), (16, 77721), (20, 77751),

Gene: Wofford_112 Start: 78427, Stop: 78609, Start Num: 7
Candidate Starts for Wofford_112:
(Start: 7 @78427 has 2 MA's), (Start: 8 @78430 has 33 MA's), (16, 78541), (20, 78571),

Gene: Yaboi_117 Start: 77396, Stop: 77575, Start Num: 8
Candidate Starts for Yaboi_117:
(Start: 8 @77396 has 33 MA's), (16, 77507), (20, 77537),