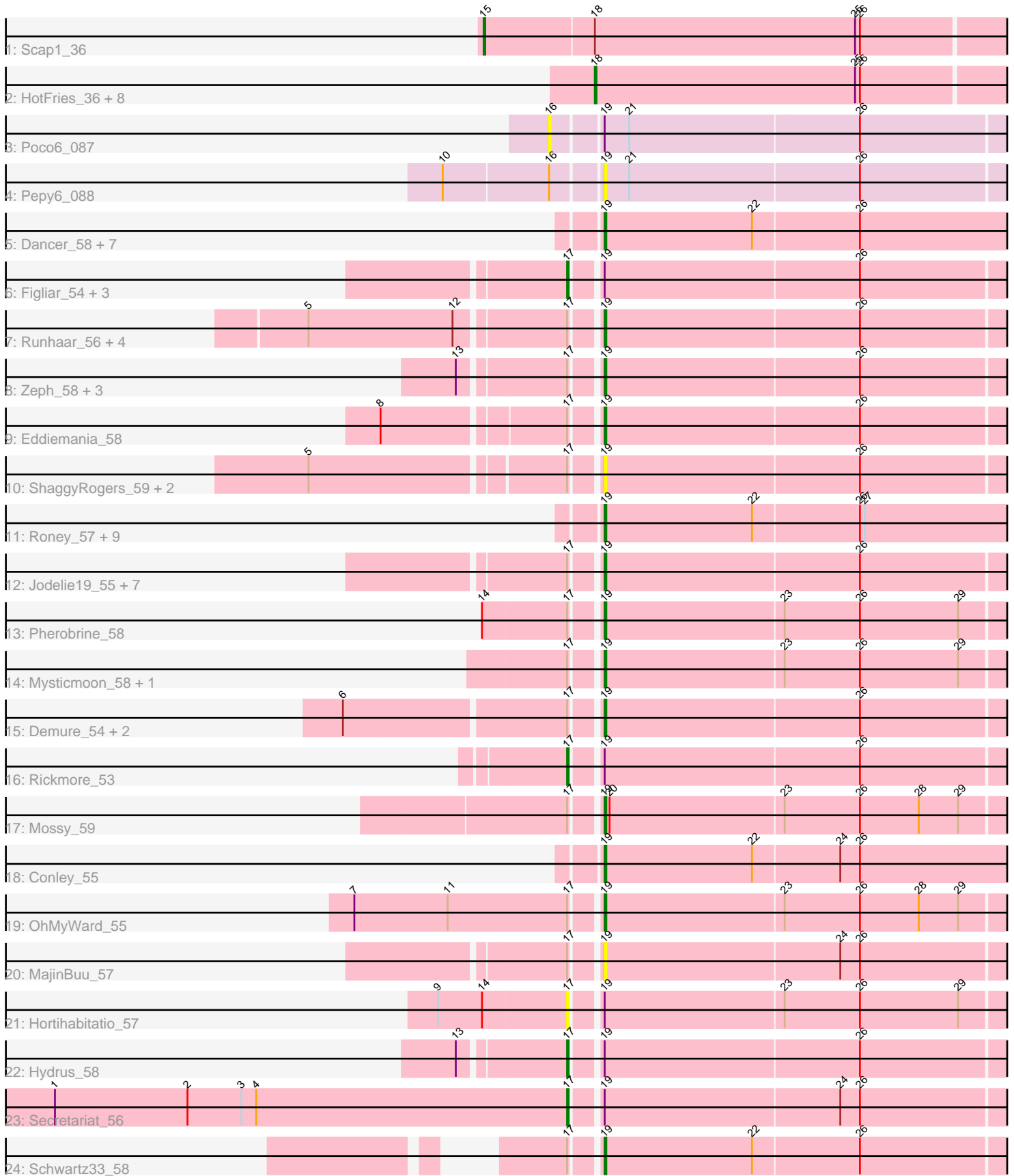


Pham 200239



Note: Tracks are now grouped by subcluster and scaled. Switching in subcluster is indicated by changes in track color. Track scale is now set by default to display the region 30 bp upstream of start 1 to 30 bp downstream of the last possible start. If this default region is judged to be packed too tightly with annotated starts, the track will be further scaled to only show that region of the ORF with annotated starts. This action will be indicated by adding "Zoomed" to the title. For starts, yellow indicates the location of called starts comprised solely of Glimmer/GeneMark auto-annotations, green indicates the location of called starts with at least 1 manual gene annotation.

Pham 200239 Report

This analysis was run 01/18/25 on database version 583.

Pham number 200239 has 70 members, 16 are drafts.

Phages represented in each track:

- Track 1 : Scap1_36
- Track 2 : HotFries_36, SheRa_37, PherryCruz_36, Doxi13_37, Annihilus_37, Bilo_35, GoblinVoyage_37, RavenPuff_36, Moozy_36
- Track 3 : Poco6_087
- Track 4 : Pepy6_088
- Track 5 : Dancer_58, JulesRay_59, FortCran_57, Avazak_58, Artorias_57, Talon44_59, Perkunas_58, Petite_58
- Track 6 : Figliar_54, TenaciousP_56, EndAve_57, Citrus_56
- Track 7 : Runhaar_56, Vardy_55, Burley_56, Crocheter_56, Nadmeg_57
- Track 8 : Zeph_58, Madvan_56, Phepper_57, Kenosha_55
- Track 9 : Eddiemania_58
- Track 10 : ShaggyRogers_59, BetterYeti_58, Gusicorn_58
- Track 11 : Roney_57, Kerry_56, Gill_57, Tanis_57, Captrips_56, Capybara_57, Gravy_56, Odesza_56, NoPickles_56, Magel_58
- Track 12 : Jodelie19_55, OlgasClover_57, Duffington_54, Chikenjars_54, Nithya_56, AlainaMarie_55, Aflac_55, BluerMoon_57
- Track 13 : Pherobrine_58
- Track 14 : Mysticmoon_58, Fazel_57
- Track 15 : Demure_54, Untouchable_58, Arataki_53
- Track 16 : Rickmore_53
- Track 17 : Mossy_59
- Track 18 : Conley_55
- Track 19 : OhMyWard_55
- Track 20 : MajinBuu_57
- Track 21 : Hortihabitatio_57
- Track 22 : Hydrus_58
- Track 23 : Secretariat_56
- Track 24 : Schwartz33_58

Summary of Final Annotations (See graph section above for start numbers):

The start number called the most often in the published annotations is 19, it was called in 38 of the 54 non-draft genes in the pham.

Genes that call this "Most Annotated" start:

- Aflac_55, AlainaMarie_55, Arataki_53, Artorias_57, Avazak_58, BetterYeti_58, BluerMoon_57, Burley_56, Captrips_56, Capybara_57, Chikenjars_54, Conley_55, Crocheter_56, Dancer_58, Demure_54, Duffington_54, Eddiemania_58, Fazel_57, FortCran_57, Gill_57, Gravy_56, Gusicorn_58, Jodelie19_55, JulesRay_59, Kenosha_55, Kerry_56, Madvan_56, Magel_58, MajinBuu_57, Mossy_59, Mysticmoon_58, Nadmeg_57, Nithya_56, NoPickles_56, Odesza_56, OhMyWard_55, OlgasClover_57, Pepy6_088, Perkunas_58, Petite_58, Phepper_57, Pherobrine_58, Roney_57, Runhaar_56, Schwartz33_58, ShaggyRogers_59, Talon44_59, Tanis_57, Untouchable_58, Vardy_55, Zeph_58,

Genes that have the "Most Annotated" start but do not call it:

- Citrus_56, EndAve_57, Figliar_54, Hortihabitatio_57, Hydrus_58, Poco6_087, Rickmore_53, Secretariat_56, TenaciousP_56,

Genes that do not have the "Most Annotated" start:

- Annihilus_37, Bilo_35, Doxi13_37, GoblinVoyage_37, HotFries_36, Moozy_36, PherryCruz_36, RavenPuff_36, Scap1_36, SheRa_37,

Summary by start number:

Start 15:

- Found in 1 of 70 (1.4%) of genes in pham
- Manual Annotations of this start: 1 of 54
- Called 100.0% of time when present
- Phage (with cluster) where this start called: Scap1_36 (BI2),

Start 16:

- Found in 2 of 70 (2.9%) of genes in pham
- No Manual Annotations of this start.
- Called 50.0% of time when present
- Phage (with cluster) where this start called: Poco6_087 (CC),

Start 17:

- Found in 39 of 70 (55.7%) of genes in pham
- Manual Annotations of this start: 6 of 54
- Called 20.5% of time when present
- Phage (with cluster) where this start called: Citrus_56 (DJ), EndAve_57 (DJ), Figliar_54 (DJ), Hortihabitatio_57 (DJ), Hydrus_58 (DJ), Rickmore_53 (DJ), Secretariat_56 (DJ), TenaciousP_56 (DJ),

Start 18:

- Found in 10 of 70 (14.3%) of genes in pham
- Manual Annotations of this start: 9 of 54
- Called 90.0% of time when present
- Phage (with cluster) where this start called: Annihilus_37 (BI2), Bilo_35 (BI2), Doxi13_37 (BI2), GoblinVoyage_37 (BI2), HotFries_36 (BI2), Moozy_36 (BI2), PherryCruz_36 (BI2), RavenPuff_36 (BI2), SheRa_37 (BI2),

Start 19:

- Found in 60 of 70 (85.7%) of genes in pham
- Manual Annotations of this start: 38 of 54
- Called 85.0% of time when present

- Phage (with cluster) where this start called: Aflac_55 (DJ), AlainaMarie_55 (DJ), Arataki_53 (DJ), Artorias_57 (DJ), Avazak_58 (DJ), BetterYeti_58 (DJ), BluerMoon_57 (DJ), Burley_56 (DJ), Captrips_56 (DJ), Capybara_57 (DJ), Chickenjars_54 (DJ), Conley_55 (DJ), Crocheter_56 (DJ), Dancer_58 (DJ), Demure_54 (DJ), Duffington_54 (DJ), Eddiemania_58 (DJ), Fazel_57 (DJ), FortCran_57 (DJ), Gill_57 (DJ), Gravy_56 (DJ), Gusicorn_58 (DJ), Jodelie19_55 (DJ), JulesRay_59 (DJ), Kenosha_55 (DJ), Kerry_56 (DJ), Madvan_56 (DJ), Magel_58 (DJ), MajinBuu_57 (DJ), Mossy_59 (DJ), Mysticmoon_58 (DJ), Nadmeg_57 (DJ), Nithya_56 (DJ), NoPickles_56 (DJ), Odesza_56 (DJ), OhMyWard_55 (DJ), OlgasClover_57 (DJ), Pepy6_088 (CC), Perkunas_58 (DJ), Petite_58 (DJ), Phepper_57 (DJ), Pherobrine_58 (DJ), Roney_57 (DJ), Runhaar_56 (DJ), Schwartz33_58 (DJ), ShaggyRogers_59 (DJ), Talon44_59 (DJ), Tanis_57 (DJ), Untouchable_58 (DJ), Vardy_55 (DJ), Zeph_58 (DJ),

Summary by clusters:

There are 3 clusters represented in this pham: CC, BI2, DJ,

Info for manual annotations of cluster BI2:

- Start number 15 was manually annotated 1 time for cluster BI2.
- Start number 18 was manually annotated 9 times for cluster BI2.

Info for manual annotations of cluster DJ:

- Start number 17 was manually annotated 6 times for cluster DJ.
- Start number 19 was manually annotated 38 times for cluster DJ.

Gene Information:

Gene: Aflac_55 Start: 38455, Stop: 38703, Start Num: 19

Candidate Starts for Aflac_55:

(Start: 17 @38440 has 6 MA's), (Start: 19 @38455 has 38 MA's), (26, 38608),

Gene: AlainaMarie_55 Start: 38440, Stop: 38688, Start Num: 19

Candidate Starts for AlainaMarie_55:

(Start: 17 @38425 has 6 MA's), (Start: 19 @38440 has 38 MA's), (26, 38593),

Gene: Annihilus_37 Start: 27049, Stop: 27300, Start Num: 18

Candidate Starts for Annihilus_37:

(Start: 18 @27049 has 9 MA's), (25, 27208), (26, 27211),

Gene: Arataki_53 Start: 38135, Stop: 38383, Start Num: 19

Candidate Starts for Arataki_53:

(6, 37991), (Start: 17 @38120 has 6 MA's), (Start: 19 @38135 has 38 MA's), (26, 38288),

Gene: Artorias_57 Start: 38633, Stop: 38884, Start Num: 19

Candidate Starts for Artorias_57:

(Start: 19 @38633 has 38 MA's), (22, 38723), (26, 38786),

Gene: Avazak_58 Start: 38960, Stop: 39211, Start Num: 19

Candidate Starts for Avazak_58:

(Start: 19 @38960 has 38 MA's), (22, 39050), (26, 39113),

Gene: BetterYeti_58 Start: 38537, Stop: 38785, Start Num: 19

Candidate Starts for BetterYeti_58:

(5, 38375), (Start: 17 @38522 has 6 MA's), (Start: 19 @38537 has 38 MA's), (26, 38690),

Gene: Bilo_35 Start: 27161, Stop: 27412, Start Num: 18

Candidate Starts for Bilo_35:

(Start: 18 @27161 has 9 MA's), (25, 27320), (26, 27323),

Gene: BluerMoon_57 Start: 38484, Stop: 38732, Start Num: 19

Candidate Starts for BluerMoon_57:

(Start: 17 @38469 has 6 MA's), (Start: 19 @38484 has 38 MA's), (26, 38637),

Gene: Burley_56 Start: 38225, Stop: 38473, Start Num: 19

Candidate Starts for Burley_56:

(5, 38060), (12, 38147), (Start: 17 @38210 has 6 MA's), (Start: 19 @38225 has 38 MA's), (26, 38378),

Gene: Captrips_56 Start: 38108, Stop: 38359, Start Num: 19

Candidate Starts for Captrips_56:

(Start: 19 @38108 has 38 MA's), (22, 38198), (26, 38261), (27, 38264),

Gene: Capybara_57 Start: 38439, Stop: 38690, Start Num: 19

Candidate Starts for Capybara_57:

(Start: 19 @38439 has 38 MA's), (22, 38529), (26, 38592), (27, 38595),

Gene: Chikenjars_54 Start: 38453, Stop: 38701, Start Num: 19

Candidate Starts for Chikenjars_54:

(Start: 17 @38438 has 6 MA's), (Start: 19 @38453 has 38 MA's), (26, 38606),

Gene: Citrus_56 Start: 38715, Stop: 38978, Start Num: 17

Candidate Starts for Citrus_56:

(Start: 17 @38715 has 6 MA's), (Start: 19 @38730 has 38 MA's), (26, 38883),

Gene: Conley_55 Start: 39080, Stop: 39331, Start Num: 19

Candidate Starts for Conley_55:

(Start: 19 @39080 has 38 MA's), (22, 39170), (24, 39221), (26, 39233),

Gene: Crocheter_56 Start: 38621, Stop: 38869, Start Num: 19

Candidate Starts for Crocheter_56:

(5, 38456), (12, 38543), (Start: 17 @38606 has 6 MA's), (Start: 19 @38621 has 38 MA's), (26, 38774),

Gene: Dancer_58 Start: 38368, Stop: 38619, Start Num: 19

Candidate Starts for Dancer_58:

(Start: 19 @38368 has 38 MA's), (22, 38458), (26, 38521),

Gene: Demure_54 Start: 38135, Stop: 38383, Start Num: 19

Candidate Starts for Demure_54:

(6, 37991), (Start: 17 @38120 has 6 MA's), (Start: 19 @38135 has 38 MA's), (26, 38288),

Gene: Doxi13_37 Start: 27023, Stop: 27274, Start Num: 18

Candidate Starts for Doxi13_37:

(Start: 18 @27023 has 9 MA's), (25, 27182), (26, 27185),

Gene: Duffington_54 Start: 38148, Stop: 38396, Start Num: 19
Candidate Starts for Duffington_54:
(Start: 17 @38133 has 6 MA's), (Start: 19 @38148 has 38 MA's), (26, 38301),

Gene: Eddiemania_58 Start: 39366, Stop: 39614, Start Num: 19
Candidate Starts for Eddiemania_58:
(8, 39246), (Start: 17 @39351 has 6 MA's), (Start: 19 @39366 has 38 MA's), (26, 39519),

Gene: EndAve_57 Start: 38606, Stop: 38869, Start Num: 17
Candidate Starts for EndAve_57:
(Start: 17 @38606 has 6 MA's), (Start: 19 @38621 has 38 MA's), (26, 38774),

Gene: Fazel_57 Start: 38400, Stop: 38648, Start Num: 19
Candidate Starts for Fazel_57:
(Start: 17 @38385 has 6 MA's), (Start: 19 @38400 has 38 MA's), (23, 38508), (26, 38553), (29, 38613),

Gene: Figliar_54 Start: 38508, Stop: 38771, Start Num: 17
Candidate Starts for Figliar_54:
(Start: 17 @38508 has 6 MA's), (Start: 19 @38523 has 38 MA's), (26, 38676),

Gene: FortCran_57 Start: 38633, Stop: 38884, Start Num: 19
Candidate Starts for FortCran_57:
(Start: 19 @38633 has 38 MA's), (22, 38723), (26, 38786),

Gene: Gill_57 Start: 38456, Stop: 38707, Start Num: 19
Candidate Starts for Gill_57:
(Start: 19 @38456 has 38 MA's), (22, 38546), (26, 38609), (27, 38612),

Gene: GoblinVoyage_37 Start: 27023, Stop: 27274, Start Num: 18
Candidate Starts for GoblinVoyage_37:
(Start: 18 @27023 has 9 MA's), (25, 27182), (26, 27185),

Gene: Gravy_56 Start: 38129, Stop: 38380, Start Num: 19
Candidate Starts for Gravy_56:
(Start: 19 @38129 has 38 MA's), (22, 38219), (26, 38282), (27, 38285),

Gene: Gusicorn_58 Start: 38538, Stop: 38786, Start Num: 19
Candidate Starts for Gusicorn_58:
(5, 38376), (Start: 17 @38523 has 6 MA's), (Start: 19 @38538 has 38 MA's), (26, 38691),

Gene: Hortihabitatio_57 Start: 39213, Stop: 39476, Start Num: 17
Candidate Starts for Hortihabitatio_57:
(9, 39135), (14, 39162), (Start: 17 @39213 has 6 MA's), (Start: 19 @39228 has 38 MA's), (23, 39336), (26, 39381), (29, 39441),

Gene: HotFries_36 Start: 27067, Stop: 27318, Start Num: 18
Candidate Starts for HotFries_36:
(Start: 18 @27067 has 9 MA's), (25, 27226), (26, 27229),

Gene: Hydrus_58 Start: 39377, Stop: 39640, Start Num: 17
Candidate Starts for Hydrus_58:
(13, 39317), (Start: 17 @39377 has 6 MA's), (Start: 19 @39392 has 38 MA's), (26, 39545),

Gene: Jodelie19_55 Start: 39927, Stop: 40175, Start Num: 19
Candidate Starts for Jodelie19_55:
(Start: 17 @39912 has 6 MA's), (Start: 19 @39927 has 38 MA's), (26, 40080),

Gene: JulesRay_59 Start: 38629, Stop: 38880, Start Num: 19
Candidate Starts for JulesRay_59:
(Start: 19 @38629 has 38 MA's), (22, 38719), (26, 38782),

Gene: Kenosha_55 Start: 38852, Stop: 39100, Start Num: 19
Candidate Starts for Kenosha_55:
(13, 38777), (Start: 17 @38837 has 6 MA's), (Start: 19 @38852 has 38 MA's), (26, 39005),

Gene: Kerry_56 Start: 38129, Stop: 38380, Start Num: 19
Candidate Starts for Kerry_56:
(Start: 19 @38129 has 38 MA's), (22, 38219), (26, 38282), (27, 38285),

Gene: Madvan_56 Start: 38261, Stop: 38509, Start Num: 19
Candidate Starts for Madvan_56:
(13, 38186), (Start: 17 @38246 has 6 MA's), (Start: 19 @38261 has 38 MA's), (26, 38414),

Gene: Magel_58 Start: 38372, Stop: 38623, Start Num: 19
Candidate Starts for Magel_58:
(Start: 19 @38372 has 38 MA's), (22, 38462), (26, 38525), (27, 38528),

Gene: MajinBuu_57 Start: 38905, Stop: 39153, Start Num: 19
Candidate Starts for MajinBuu_57:
(Start: 17 @38890 has 6 MA's), (Start: 19 @38905 has 38 MA's), (24, 39046), (26, 39058),

Gene: Moozy_36 Start: 27024, Stop: 27275, Start Num: 18
Candidate Starts for Moozy_36:
(Start: 18 @27024 has 9 MA's), (25, 27183), (26, 27186),

Gene: Mossy_59 Start: 40273, Stop: 40521, Start Num: 19
Candidate Starts for Mossy_59:
(Start: 17 @40258 has 6 MA's), (Start: 19 @40273 has 38 MA's), (20, 40276), (23, 40381), (26, 40426),
(28, 40462), (29, 40486),

Gene: Mysticmoon_58 Start: 39697, Stop: 39945, Start Num: 19
Candidate Starts for Mysticmoon_58:
(Start: 17 @39682 has 6 MA's), (Start: 19 @39697 has 38 MA's), (23, 39805), (26, 39850), (29, 39910),

Gene: Nadmeg_57 Start: 39508, Stop: 39756, Start Num: 19
Candidate Starts for Nadmeg_57:
(5, 39343), (12, 39430), (Start: 17 @39493 has 6 MA's), (Start: 19 @39508 has 38 MA's), (26, 39661),

Gene: Nithya_56 Start: 38364, Stop: 38612, Start Num: 19
Candidate Starts for Nithya_56:
(Start: 17 @38349 has 6 MA's), (Start: 19 @38364 has 38 MA's), (26, 38517),

Gene: NoPickles_56 Start: 37794, Stop: 38045, Start Num: 19
Candidate Starts for NoPickles_56:
(Start: 19 @37794 has 38 MA's), (22, 37884), (26, 37947), (27, 37950),

Gene: Odesza_56 Start: 38316, Stop: 38567, Start Num: 19
Candidate Starts for Odesza_56:
(Start: 19 @38316 has 38 MA's), (22, 38406), (26, 38469), (27, 38472),

Gene: OhMyWard_55 Start: 40027, Stop: 40275, Start Num: 19
Candidate Starts for OhMyWard_55:
(7, 39883), (11, 39940), (Start: 17 @40012 has 6 MA's), (Start: 19 @40027 has 38 MA's), (23, 40135),
(26, 40180), (28, 40216), (29, 40240),

Gene: OlgasClover_57 Start: 39508, Stop: 39756, Start Num: 19
Candidate Starts for OlgasClover_57:
(Start: 17 @39493 has 6 MA's), (Start: 19 @39508 has 38 MA's), (26, 39661),

Gene: Pepy6_088 Start: 48806, Stop: 49051, Start Num: 19
Candidate Starts for Pepy6_088:
(10, 48716), (16, 48779), (Start: 19 @48806 has 38 MA's), (21, 48821), (26, 48959),

Gene: Perkunas_58 Start: 38597, Stop: 38848, Start Num: 19
Candidate Starts for Perkunas_58:
(Start: 19 @38597 has 38 MA's), (22, 38687), (26, 38750),

Gene: Petite_58 Start: 39754, Stop: 40005, Start Num: 19
Candidate Starts for Petite_58:
(Start: 19 @39754 has 38 MA's), (22, 39844), (26, 39907),

Gene: Phepper_57 Start: 38523, Stop: 38771, Start Num: 19
Candidate Starts for Phepper_57:
(13, 38448), (Start: 17 @38508 has 6 MA's), (Start: 19 @38523 has 38 MA's), (26, 38676),

Gene: Pherobrine_58 Start: 40107, Stop: 40355, Start Num: 19
Candidate Starts for Pherobrine_58:
(14, 40041), (Start: 17 @40092 has 6 MA's), (Start: 19 @40107 has 38 MA's), (23, 40215), (26, 40260),
(29, 40320),

Gene: PherryCruz_36 Start: 27019, Stop: 27270, Start Num: 18
Candidate Starts for PherryCruz_36:
(Start: 18 @27019 has 9 MA's), (25, 27178), (26, 27181),

Gene: Poco6_087 Start: 50294, Stop: 50566, Start Num: 16
Candidate Starts for Poco6_087:
(16, 50294), (Start: 19 @50321 has 38 MA's), (21, 50336), (26, 50474),

Gene: RavenPuff_36 Start: 27019, Stop: 27270, Start Num: 18
Candidate Starts for RavenPuff_36:
(Start: 18 @27019 has 9 MA's), (25, 27178), (26, 27181),

Gene: Rickmore_53 Start: 36852, Stop: 37115, Start Num: 17
Candidate Starts for Rickmore_53:
(Start: 17 @36852 has 6 MA's), (Start: 19 @36867 has 38 MA's), (26, 37020),

Gene: Roney_57 Start: 38482, Stop: 38733, Start Num: 19
Candidate Starts for Roney_57:

(Start: 19 @38482 has 38 MA's), (22, 38572), (26, 38635), (27, 38638),

Gene: Runhaar_56 Start: 38324, Stop: 38572, Start Num: 19

Candidate Starts for Runhaar_56:

(5, 38159), (12, 38246), (Start: 17 @38309 has 6 MA's), (Start: 19 @38324 has 38 MA's), (26, 38477),

Gene: Scap1_36 Start: 26822, Stop: 27139, Start Num: 15

Candidate Starts for Scap1_36:

(Start: 15 @26822 has 1 MA's), (Start: 18 @26888 has 9 MA's), (25, 27047), (26, 27050),

Gene: Schwartz33_58 Start: 38741, Stop: 38989, Start Num: 19

Candidate Starts for Schwartz33_58:

(Start: 17 @38726 has 6 MA's), (Start: 19 @38741 has 38 MA's), (22, 38831), (26, 38894),

Gene: Secretariat_56 Start: 37693, Stop: 37956, Start Num: 17

Candidate Starts for Secretariat_56:

(1, 37381), (2, 37462), (3, 37495), (4, 37504), (Start: 17 @37693 has 6 MA's), (Start: 19 @37708 has 38 MA's), (24, 37849), (26, 37861),

Gene: ShaggyRogers_59 Start: 38274, Stop: 38522, Start Num: 19

Candidate Starts for ShaggyRogers_59:

(5, 38112), (Start: 17 @38259 has 6 MA's), (Start: 19 @38274 has 38 MA's), (26, 38427),

Gene: SheRa_37 Start: 27065, Stop: 27316, Start Num: 18

Candidate Starts for SheRa_37:

(Start: 18 @27065 has 9 MA's), (25, 27224), (26, 27227),

Gene: Talon44_59 Start: 38631, Stop: 38882, Start Num: 19

Candidate Starts for Talon44_59:

(Start: 19 @38631 has 38 MA's), (22, 38721), (26, 38784),

Gene: Tanis_57 Start: 38302, Stop: 38553, Start Num: 19

Candidate Starts for Tanis_57:

(Start: 19 @38302 has 38 MA's), (22, 38392), (26, 38455), (27, 38458),

Gene: TenaciousP_56 Start: 39874, Stop: 40137, Start Num: 17

Candidate Starts for TenaciousP_56:

(Start: 17 @39874 has 6 MA's), (Start: 19 @39889 has 38 MA's), (26, 40042),

Gene: Untouchable_58 Start: 39434, Stop: 39682, Start Num: 19

Candidate Starts for Untouchable_58:

(6, 39290), (Start: 17 @39419 has 6 MA's), (Start: 19 @39434 has 38 MA's), (26, 39587),

Gene: Vardy_55 Start: 38214, Stop: 38462, Start Num: 19

Candidate Starts for Vardy_55:

(5, 38049), (12, 38136), (Start: 17 @38199 has 6 MA's), (Start: 19 @38214 has 38 MA's), (26, 38367),

Gene: Zeph_58 Start: 39362, Stop: 39610, Start Num: 19

Candidate Starts for Zeph_58:

(13, 39287), (Start: 17 @39347 has 6 MA's), (Start: 19 @39362 has 38 MA's), (26, 39515),