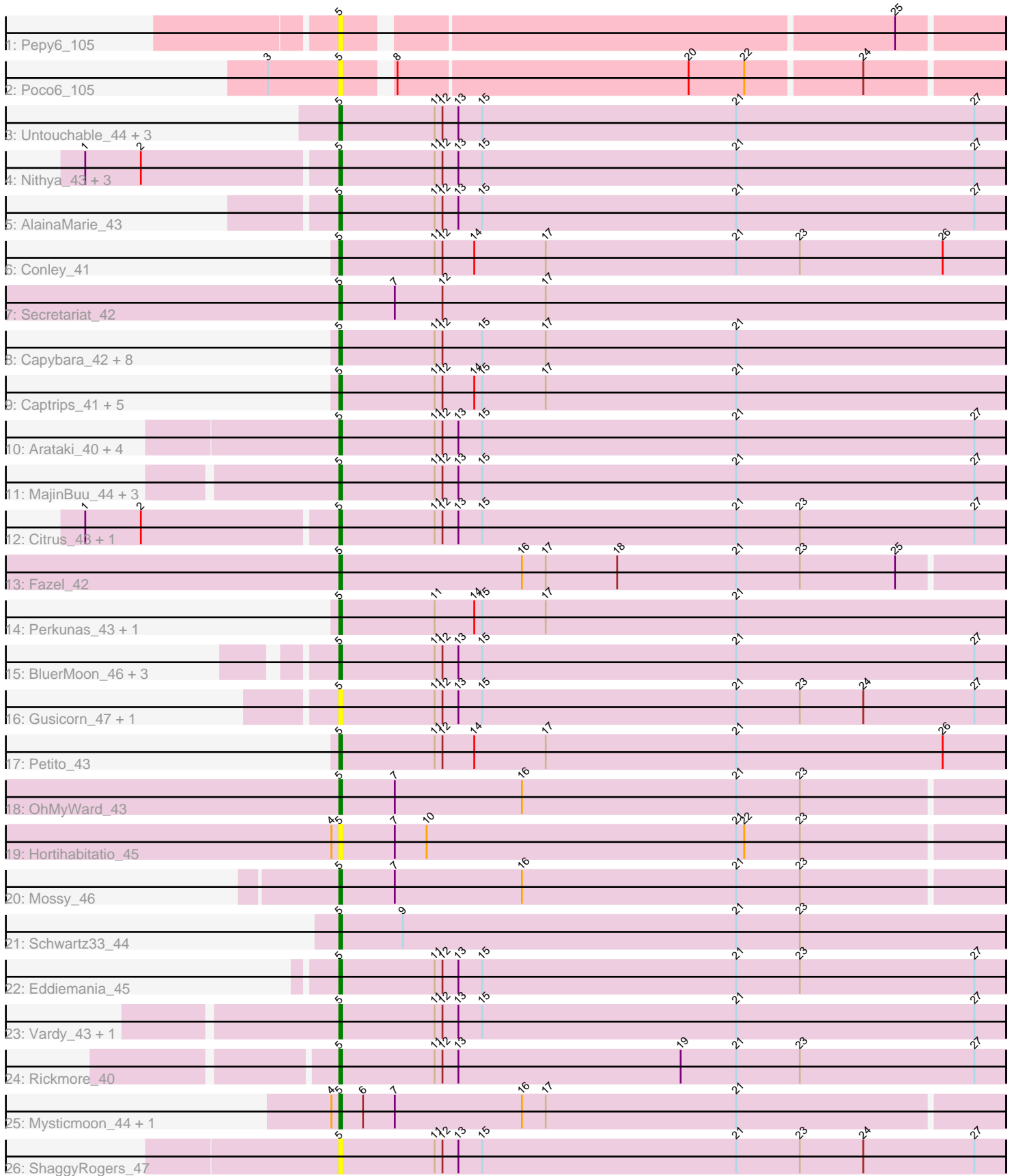


Pham 200285



Note: Tracks are now grouped by subcluster and scaled. Switching in subcluster is indicated by changes in track color. Track scale is now set by default to display the region 30 bp upstream of start 1 to 30 bp downstream of the last possible start. If this default region is judged to be packed too tightly with annotated starts, the track will be further scaled to only show that region of the ORF with annotated starts. This action will be indicated by adding "Zoomed" to the title. For starts, yellow indicates the location of called starts comprised solely of Glimmer/GeneMark auto-annotations, green indicates the location of called starts with at least 1 manual gene annotation.

Pham 200285 Report

This analysis was run 01/18/25 on database version 583.

Pham number 200285 has 60 members, 16 are drafts.

Phages represented in each track:

- Track 1 : Pepy6_105
- Track 2 : Poco6_105
- Track 3 : Untouchable_44, Phepper_44, Hydrus_45, Zeph_45
- Track 4 : Nithya_43, Duffington_42, Chikenjars_43, EndAve_44
- Track 5 : AlainaMarie_43
- Track 6 : Conley_41
- Track 7 : Secretariat_42
- Track 8 : Capybara_42, Gravy_41, Gill_42, NoPickles_41, Magel_43, Odesza_41, Roney_42, Tanis_42, Kerry_41
- Track 9 : Captrips_41, Avazak_42, Artorias_41, FortCran_41, Dancer_43, JulesRay_43
- Track 10 : Arataki_40, Nadmeg_44, Demure_41, Crocheter_43, Madvan_43
- Track 11 : MajinBuu_44, Kenosha_43, Figliar_43, Jodelie19_44
- Track 12 : Citrus_43, Runhaar_44
- Track 13 : Fazel_42
- Track 14 : Perkunas_43, Talon44_44
- Track 15 : BluerMoon_46, Aflac_43, OlgasClover_44, TenaciousP_44
- Track 16 : Gusicorn_47, BetterYeti_46
- Track 17 : Petite_43
- Track 18 : OhMyWard_43
- Track 19 : Hortihabitatio_45
- Track 20 : Mossy_46
- Track 21 : Schwartz33_44
- Track 22 : Eddiemia_45
- Track 23 : Vardy_43, Burley_43
- Track 24 : Rickmore_40
- Track 25 : Mysticmoon_44, Pherobrine_44
- Track 26 : ShaggyRogers_47

Summary of Final Annotations (See graph section above for start numbers):

The start number called the most often in the published annotations is 5, it was called in 44 of the 44 non-draft genes in the pham.

Genes that call this "Most Annotated" start:

- Aflac_43, AlainaMarie_43, Arataki_40, Artorias_41, Avazak_42, BetterYeti_46, BluerMoon_46, Burley_43, Captrips_41, Capybara_42, Chikenjars_43, Citrus_43, Conley_41, Crocheter_43, Dancer_43, Demure_41, Duffington_42, Eddiemania_45, EndAve_44, Fazel_42, Figliar_43, FortCran_41, Gill_42, Gravy_41, Gusicorn_47, Hortihabitatio_45, Hydrus_45, Jodelie19_44, JulesRay_43, Kenosha_43, Kerry_41, Madvan_43, Magel_43, MajinBuu_44, Mossy_46, Mysticmoon_44, Nadmeg_44, Nithya_43, NoPickles_41, Odesza_41, OhMyWard_43, OlgasClover_44, Pepy6_105, Perkunas_43, Petite_43, Phepper_44, Pherobrine_44, Poco6_105, Rickmore_40, Roney_42, Runhaar_44, Schwartz33_44, Secretariat_42, ShaggyRogers_47, Talon44_44, Tanis_42, TenaciousP_44, Untouchable_44, Vardy_43, Zeph_45,

Genes that have the "Most Annotated" start but do not call it:

-

Genes that do not have the "Most Annotated" start:

-

Summary by start number:

Start 5:

- Found in 60 of 60 (100.0%) of genes in pham
- Manual Annotations of this start: 44 of 44
- Called 100.0% of time when present
- Phage (with cluster) where this start called: Aflac_43 (DJ), AlainaMarie_43 (DJ), Arataki_40 (DJ), Artorias_41 (DJ), Avazak_42 (DJ), BetterYeti_46 (DJ), BluerMoon_46 (DJ), Burley_43 (DJ), Captrips_41 (DJ), Capybara_42 (DJ), Chikenjars_43 (DJ), Citrus_43 (DJ), Conley_41 (DJ), Crocheter_43 (DJ), Dancer_43 (DJ), Demure_41 (DJ), Duffington_42 (DJ), Eddiemania_45 (DJ), EndAve_44 (DJ), Fazel_42 (DJ), Figliar_43 (DJ), FortCran_41 (DJ), Gill_42 (DJ), Gravy_41 (DJ), Gusicorn_47 (DJ), Hortihabitatio_45 (DJ), Hydrus_45 (DJ), Jodelie19_44 (DJ), JulesRay_43 (DJ), Kenosha_43 (DJ), Kerry_41 (DJ), Madvan_43 (DJ), Magel_43 (DJ), MajinBuu_44 (DJ), Mossy_46 (DJ), Mysticmoon_44 (DJ), Nadmeg_44 (DJ), Nithya_43 (DJ), NoPickles_41 (DJ), Odesza_41 (DJ), OhMyWard_43 (DJ), OlgasClover_44 (DJ), Pepy6_105 (CC), Perkunas_43 (DJ), Petite_43 (DJ), Phepper_44 (DJ), Pherobrine_44 (DJ), Poco6_105 (CC), Rickmore_40 (DJ), Roney_42 (DJ), Runhaar_44 (DJ), Schwartz33_44 (DJ), Secretariat_42 (DJ), ShaggyRogers_47 (DJ), Talon44_44 (DJ), Tanis_42 (DJ), TenaciousP_44 (DJ), Untouchable_44 (DJ), Vardy_43 (DJ), Zeph_45 (DJ),

Summary by clusters:

There are 2 clusters represented in this pham: CC, DJ,

Info for manual annotations of cluster DJ:

- Start number 5 was manually annotated 44 times for cluster DJ.

Gene Information:

Gene: Aflac_43 Start: 33707, Stop: 33958, Start Num: 5

Candidate Starts for Aflac_43:

(Start: 5 @33707 has 44 MA's), (11, 33743), (12, 33746), (13, 33752), (15, 33761), (21, 33857), (27, 33947),

Gene: AlainaMarie_43 Start: 33692, Stop: 33943, Start Num: 5

Candidate Starts for AlainaMarie_43:

(Start: 5 @33692 has 44 MA's), (11, 33728), (12, 33731), (13, 33737), (15, 33746), (21, 33842), (27, 33932),

Gene: Arataki_40 Start: 32810, Stop: 33061, Start Num: 5

Candidate Starts for Arataki_40:

(Start: 5 @32810 has 44 MA's), (11, 32846), (12, 32849), (13, 32855), (15, 32864), (21, 32960), (27, 33050),

Gene: Artorias_41 Start: 31178, Stop: 31429, Start Num: 5

Candidate Starts for Artorias_41:

(Start: 5 @31178 has 44 MA's), (11, 31214), (12, 31217), (14, 31229), (15, 31232), (17, 31256), (21, 31328),

Gene: Avazak_42 Start: 31543, Stop: 31794, Start Num: 5

Candidate Starts for Avazak_42:

(Start: 5 @31543 has 44 MA's), (11, 31579), (12, 31582), (14, 31594), (15, 31597), (17, 31621), (21, 31693),

Gene: BetterYeti_46 Start: 33760, Stop: 34011, Start Num: 5

Candidate Starts for BetterYeti_46:

(Start: 5 @33760 has 44 MA's), (11, 33796), (12, 33799), (13, 33805), (15, 33814), (21, 33910), (23, 33934), (24, 33958), (27, 34000),

Gene: BluerMoon_46 Start: 33703, Stop: 33954, Start Num: 5

Candidate Starts for BluerMoon_46:

(Start: 5 @33703 has 44 MA's), (11, 33739), (12, 33742), (13, 33748), (15, 33757), (21, 33853), (27, 33943),

Gene: Burley_43 Start: 33465, Stop: 33716, Start Num: 5

Candidate Starts for Burley_43:

(Start: 5 @33465 has 44 MA's), (11, 33501), (12, 33504), (13, 33510), (15, 33519), (21, 33615), (27, 33705),

Gene: Captrips_41 Start: 31216, Stop: 31467, Start Num: 5

Candidate Starts for Captrips_41:

(Start: 5 @31216 has 44 MA's), (11, 31252), (12, 31255), (14, 31267), (15, 31270), (17, 31294), (21, 31366),

Gene: Capybara_42 Start: 31605, Stop: 31856, Start Num: 5

Candidate Starts for Capybara_42:

(Start: 5 @31605 has 44 MA's), (11, 31641), (12, 31644), (15, 31659), (17, 31683), (21, 31755),

Gene: Chikenjars_43 Start: 33703, Stop: 33954, Start Num: 5

Candidate Starts for Chikenjars_43:

(1, 33610), (2, 33631), (Start: 5 @33703 has 44 MA's), (11, 33739), (12, 33742), (13, 33748), (15, 33757), (21, 33853), (27, 33943),

Gene: Citrus_43 Start: 33982, Stop: 34233, Start Num: 5

Candidate Starts for Citrus_43:

(1, 33889), (2, 33910), (Start: 5 @33982 has 44 MA's), (11, 34018), (12, 34021), (13, 34027), (15, 34036), (21, 34132), (23, 34156), (27, 34222),

Gene: Conley_41 Start: 32155, Stop: 32406, Start Num: 5

Candidate Starts for Conley_41:

(Start: 5 @32155 has 44 MA's), (11, 32191), (12, 32194), (14, 32206), (17, 32233), (21, 32305), (23, 32329), (26, 32383),

Gene: Crocheter_43 Start: 33868, Stop: 34119, Start Num: 5

Candidate Starts for Crocheter_43:

(Start: 5 @33868 has 44 MA's), (11, 33904), (12, 33907), (13, 33913), (15, 33922), (21, 34018), (27, 34108),

Gene: Dancer_43 Start: 30916, Stop: 31167, Start Num: 5

Candidate Starts for Dancer_43:

(Start: 5 @30916 has 44 MA's), (11, 30952), (12, 30955), (14, 30967), (15, 30970), (17, 30994), (21, 31066),

Gene: Demure_41 Start: 32810, Stop: 33061, Start Num: 5

Candidate Starts for Demure_41:

(Start: 5 @32810 has 44 MA's), (11, 32846), (12, 32849), (13, 32855), (15, 32864), (21, 32960), (27, 33050),

Gene: Duffington_42 Start: 33365, Stop: 33616, Start Num: 5

Candidate Starts for Duffington_42:

(1, 33272), (2, 33293), (Start: 5 @33365 has 44 MA's), (11, 33401), (12, 33404), (13, 33410), (15, 33419), (21, 33515), (27, 33605),

Gene: Eddiemania_45 Start: 34627, Stop: 34878, Start Num: 5

Candidate Starts for Eddiemania_45:

(Start: 5 @34627 has 44 MA's), (11, 34663), (12, 34666), (13, 34672), (15, 34681), (21, 34777), (23, 34801), (27, 34867),

Gene: EndAve_44 Start: 33872, Stop: 34123, Start Num: 5

Candidate Starts for EndAve_44:

(1, 33779), (2, 33800), (Start: 5 @33872 has 44 MA's), (11, 33908), (12, 33911), (13, 33917), (15, 33926), (21, 34022), (27, 34112),

Gene: Fazel_42 Start: 33160, Stop: 33408, Start Num: 5

Candidate Starts for Fazel_42:

(Start: 5 @33160 has 44 MA's), (16, 33229), (17, 33238), (18, 33265), (21, 33310), (23, 33334), (25, 33370),

Gene: Figliar_43 Start: 33767, Stop: 34018, Start Num: 5

Candidate Starts for Figliar_43:

(Start: 5 @33767 has 44 MA's), (11, 33803), (12, 33806), (13, 33812), (15, 33821), (21, 33917), (27, 34007),

Gene: FortCran_41 Start: 31178, Stop: 31429, Start Num: 5

Candidate Starts for FortCran_41:

(Start: 5 @31178 has 44 MA's), (11, 31214), (12, 31217), (14, 31229), (15, 31232), (17, 31256), (21, 31328),

Gene: Gill_42 Start: 31622, Stop: 31873, Start Num: 5

Candidate Starts for Gill_42:

(Start: 5 @31622 has 44 MA's), (11, 31658), (12, 31661), (15, 31676), (17, 31700), (21, 31772),

Gene: Gravy_41 Start: 31295, Stop: 31546, Start Num: 5

Candidate Starts for Gravy_41:

(Start: 5 @31295 has 44 MA's), (11, 31331), (12, 31334), (15, 31349), (17, 31373), (21, 31445),

Gene: Gusicorn_47 Start: 33761, Stop: 34012, Start Num: 5

Candidate Starts for Gusicorn_47:

(Start: 5 @33761 has 44 MA's), (11, 33797), (12, 33800), (13, 33806), (15, 33815), (21, 33911), (23, 33935), (24, 33959), (27, 34001),

Gene: Hortihabitatio_45 Start: 33607, Stop: 33855, Start Num: 5

Candidate Starts for Hortihabitatio_45:

(4, 33604), (Start: 5 @33607 has 44 MA's), (7, 33628), (10, 33640), (21, 33757), (22, 33760), (23, 33781),

Gene: Hydrus_45 Start: 34640, Stop: 34891, Start Num: 5

Candidate Starts for Hydrus_45:

(Start: 5 @34640 has 44 MA's), (11, 34676), (12, 34679), (13, 34685), (15, 34694), (21, 34790), (27, 34880),

Gene: Jodelie19_44 Start: 35222, Stop: 35473, Start Num: 5

Candidate Starts for Jodelie19_44:

(Start: 5 @35222 has 44 MA's), (11, 35258), (12, 35261), (13, 35267), (15, 35276), (21, 35372), (27, 35462),

Gene: JulesRay_43 Start: 31210, Stop: 31461, Start Num: 5

Candidate Starts for JulesRay_43:

(Start: 5 @31210 has 44 MA's), (11, 31246), (12, 31249), (14, 31261), (15, 31264), (17, 31288), (21, 31360),

Gene: Kenosha_43 Start: 34275, Stop: 34526, Start Num: 5

Candidate Starts for Kenosha_43:

(Start: 5 @34275 has 44 MA's), (11, 34311), (12, 34314), (13, 34320), (15, 34329), (21, 34425), (27, 34515),

Gene: Kerry_41 Start: 31295, Stop: 31546, Start Num: 5

Candidate Starts for Kerry_41:

(Start: 5 @31295 has 44 MA's), (11, 31331), (12, 31334), (15, 31349), (17, 31373), (21, 31445),

Gene: Madvan_43 Start: 33509, Stop: 33760, Start Num: 5

Candidate Starts for Madvan_43:

(Start: 5 @33509 has 44 MA's), (11, 33545), (12, 33548), (13, 33554), (15, 33563), (21, 33659), (27, 33749),

Gene: Magel_43 Start: 31526, Stop: 31777, Start Num: 5

Candidate Starts for Magel_43:

(Start: 5 @31526 has 44 MA's), (11, 31562), (12, 31565), (15, 31580), (17, 31604), (21, 31676),

Gene: MajinBuu_44 Start: 33794, Stop: 34045, Start Num: 5

Candidate Starts for MajinBuu_44:

(Start: 5 @33794 has 44 MA's), (11, 33830), (12, 33833), (13, 33839), (15, 33848), (21, 33944), (27, 34034),

Gene: Mossy_46 Start: 35625, Stop: 35873, Start Num: 5

Candidate Starts for Mossy_46:

(Start: 5 @35625 has 44 MA's), (7, 35646), (16, 35694), (21, 35775), (23, 35799),

Gene: Mysticmoon_44 Start: 33900, Stop: 34148, Start Num: 5

Candidate Starts for Mysticmoon_44:

(4, 33897), (Start: 5 @33900 has 44 MA's), (6, 33909), (7, 33921), (16, 33969), (17, 33978), (21, 34050),

Gene: Nadmeg_44 Start: 34941, Stop: 35192, Start Num: 5

Candidate Starts for Nadmeg_44:

(Start: 5 @34941 has 44 MA's), (11, 34977), (12, 34980), (13, 34986), (15, 34995), (21, 35091), (27, 35181),

Gene: Nithya_43 Start: 33693, Stop: 33944, Start Num: 5

Candidate Starts for Nithya_43:

(1, 33600), (2, 33621), (Start: 5 @33693 has 44 MA's), (11, 33729), (12, 33732), (13, 33738), (15, 33747), (21, 33843), (27, 33933),

Gene: NoPickles_41 Start: 30927, Stop: 31178, Start Num: 5

Candidate Starts for NoPickles_41:

(Start: 5 @30927 has 44 MA's), (11, 30963), (12, 30966), (15, 30981), (17, 31005), (21, 31077),

Gene: Odesza_41 Start: 31296, Stop: 31547, Start Num: 5

Candidate Starts for Odesza_41:

(Start: 5 @31296 has 44 MA's), (11, 31332), (12, 31335), (15, 31350), (17, 31374), (21, 31446),

Gene: OhMyWard_43 Start: 34719, Stop: 34967, Start Num: 5

Candidate Starts for OhMyWard_43:

(Start: 5 @34719 has 44 MA's), (7, 34740), (16, 34788), (21, 34869), (23, 34893),

Gene: OlgasClover_44 Start: 34751, Stop: 35002, Start Num: 5

Candidate Starts for OlgasClover_44:

(Start: 5 @34751 has 44 MA's), (11, 34787), (12, 34790), (13, 34796), (15, 34805), (21, 34901), (27, 34991),

Gene: Pepy6_105 Start: 42303, Stop: 42539, Start Num: 5

Candidate Starts for Pepy6_105:

(Start: 5 @42303 has 44 MA's), (25, 42501),

Gene: Perkunas_43 Start: 31586, Stop: 31837, Start Num: 5

Candidate Starts for Perkunas_43:

(Start: 5 @31586 has 44 MA's), (11, 31622), (14, 31637), (15, 31640), (17, 31664), (21, 31736),

Gene: Petite_43 Start: 32690, Stop: 32941, Start Num: 5

Candidate Starts for Petite_43:

(Start: 5 @32690 has 44 MA's), (11, 32726), (12, 32729), (14, 32741), (17, 32768), (21, 32840), (26, 32918),

Gene: Phepper_44 Start: 33762, Stop: 34013, Start Num: 5

Candidate Starts for Phepper_44:

(Start: 5 @33762 has 44 MA's), (11, 33798), (12, 33801), (13, 33807), (15, 33816), (21, 33912), (27, 34002),

Gene: Pherobrine_44 Start: 34201, Stop: 34449, Start Num: 5

Candidate Starts for Pherobrine_44:

(4, 34198), (Start: 5 @34201 has 44 MA's), (6, 34210), (7, 34222), (16, 34270), (17, 34279), (21, 34351),

Gene: Poco6_105 Start: 44097, Stop: 44333, Start Num: 5

Candidate Starts for Poco6_105:

(3, 44070), (Start: 5 @44097 has 44 MA's), (8, 44112), (20, 44220), (22, 44241), (24, 44283),

Gene: Rickmore_40 Start: 31557, Stop: 31808, Start Num: 5

Candidate Starts for Rickmore_40:

(Start: 5 @31557 has 44 MA's), (11, 31593), (12, 31596), (13, 31602), (19, 31686), (21, 31707), (23, 31731), (27, 31797),

Gene: Roney_42 Start: 31617, Stop: 31868, Start Num: 5

Candidate Starts for Roney_42:

(Start: 5 @31617 has 44 MA's), (11, 31653), (12, 31656), (15, 31671), (17, 31695), (21, 31767),

Gene: Runhaar_44 Start: 33756, Stop: 34007, Start Num: 5

Candidate Starts for Runhaar_44:

(1, 33663), (2, 33684), (Start: 5 @33756 has 44 MA's), (11, 33792), (12, 33795), (13, 33801), (15, 33810), (21, 33906), (23, 33930), (27, 33996),

Gene: Schwartz33_44 Start: 34023, Stop: 34274, Start Num: 5

Candidate Starts for Schwartz33_44:

(Start: 5 @34023 has 44 MA's), (9, 34047), (21, 34173), (23, 34197),

Gene: Secretariat_42 Start: 32934, Stop: 33185, Start Num: 5

Candidate Starts for Secretariat_42:

(Start: 5 @32934 has 44 MA's), (7, 32955), (12, 32973), (17, 33012),

Gene: ShaggyRogers_47 Start: 33511, Stop: 33762, Start Num: 5

Candidate Starts for ShaggyRogers_47:

(Start: 5 @33511 has 44 MA's), (11, 33547), (12, 33550), (13, 33556), (15, 33565), (21, 33661), (23, 33685), (24, 33709), (27, 33751),

Gene: Talon44_44 Start: 31601, Stop: 31852, Start Num: 5

Candidate Starts for Talon44_44:

(Start: 5 @31601 has 44 MA's), (11, 31637), (14, 31652), (15, 31655), (17, 31679), (21, 31751),

Gene: Tanis_42 Start: 31468, Stop: 31719, Start Num: 5

Candidate Starts for Tanis_42:

(Start: 5 @31468 has 44 MA's), (11, 31504), (12, 31507), (15, 31522), (17, 31546), (21, 31618),

Gene: TenaciousP_44 Start: 35132, Stop: 35383, Start Num: 5

Candidate Starts for TenaciousP_44:

(Start: 5 @35132 has 44 MA's), (11, 35168), (12, 35171), (13, 35177), (15, 35186), (21, 35282), (27, 35372),

Gene: Untouchable_44 Start: 34122, Stop: 34373, Start Num: 5

Candidate Starts for Untouchable_44:

(Start: 5 @34122 has 44 MA's), (11, 34158), (12, 34161), (13, 34167), (15, 34176), (21, 34272), (27, 34362),

Gene: Vardy_43 Start: 33466, Stop: 33717, Start Num: 5

Candidate Starts for Vardy_43:

(Start: 5 @33466 has 44 MA's), (11, 33502), (12, 33505), (13, 33511), (15, 33520), (21, 33616), (27, 33706),

Gene: Zeph_45 Start: 34620, Stop: 34871, Start Num: 5

Candidate Starts for Zeph_45:

(Start: 5 @34620 has 44 MA's), (11, 34656), (12, 34659), (13, 34665), (15, 34674), (21, 34770), (27, 34860),