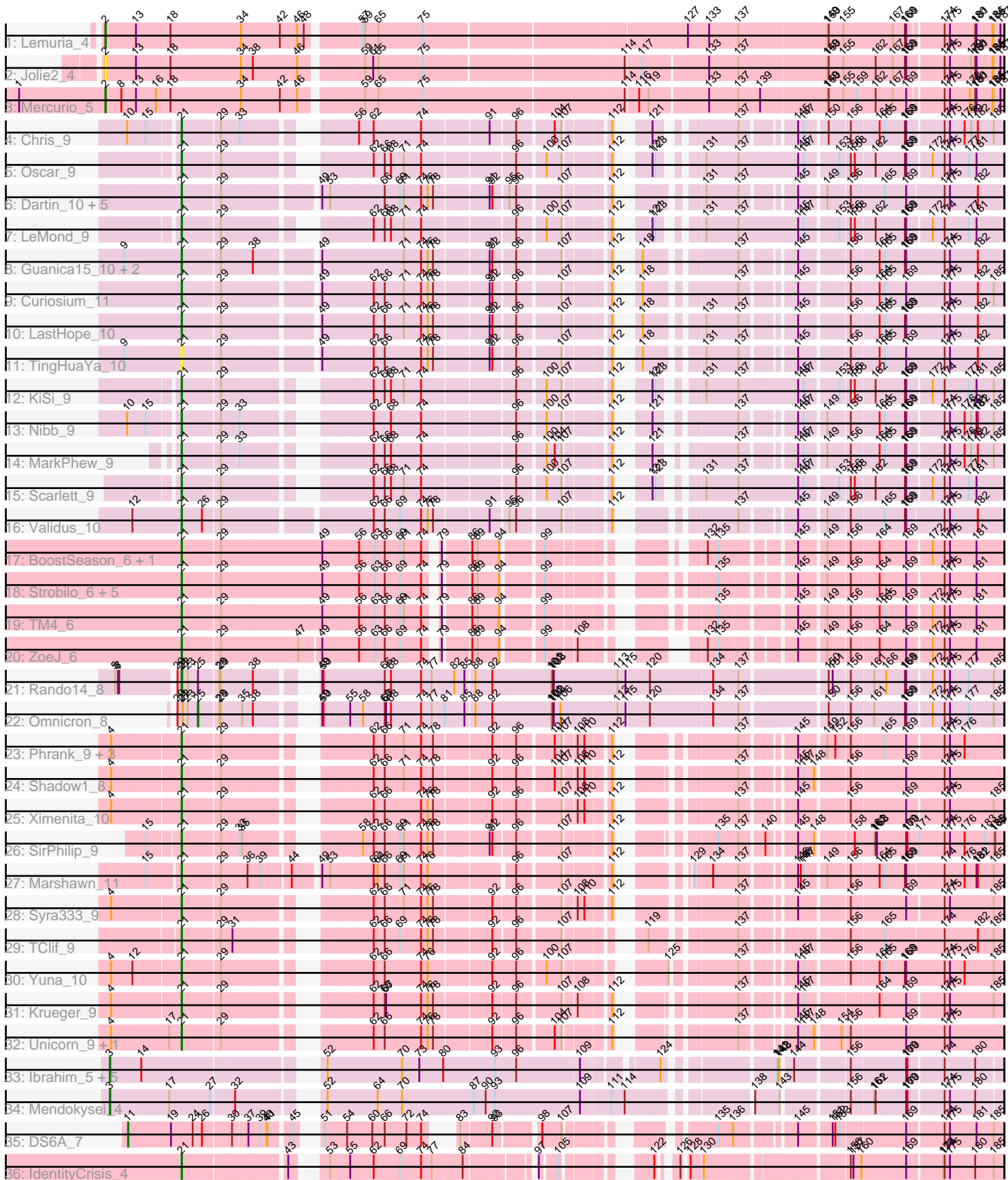


Pham 200289



Note: Tracks are now grouped by subcluster and scaled. Switching in subcluster is indicated by changes in track color. Track scale is now set by default to display the region 30 bp upstream of start 1 to 30 bp downstream of the last possible start. If this default region is judged to be packed too tightly with annotated starts, the track will be further scaled to only show that region of the ORF with annotated starts. This action will be indicated by adding "Zoomed" to the title. For starts, yellow indicates the location of called starts comprised solely of Glimmer/GeneMark auto-annotations, green indicates the location of called starts with at least 1 manual gene annotation.

Pham 200289 Report

This analysis was run 01/18/25 on database version 583.

Pham number 200289 has 58 members, 5 are drafts.

Phages represented in each track:

- Track 1 : Lemuria_4
- Track 2 : Jolie2_4
- Track 3 : Mercurio_5
- Track 4 : Chris_9
- Track 5 : Oscar_9
- Track 6 : Dartin_10, Niklas_10, Shaobing_10, Peanam_10, Richo_10, McMater_10
- Track 7 : LeMond_9
- Track 8 : Guanica15_10, Yunkel11_10, Efra2_10
- Track 9 : Curiosium_11
- Track 10 : LastHope_10
- Track 11 : TingHuaYa_10
- Track 12 : KiSi_9
- Track 13 : Nibb_9
- Track 14 : MarkPhew_9
- Track 15 : Scarlett_9
- Track 16 : Validus_10
- Track 17 : BoostSeason_6, Mufasa_6
- Track 18 : Strobilo_6, Milly_6, DismalFunk_6, Marcoliusprime_6, DismalStressor_6, Findley_6
- Track 19 : TM4_6
- Track 20 : ZoeJ_6
- Track 21 : Rando14_8
- Track 22 : Omnicron_8
- Track 23 : Phrank_9, Sunflower1121_8, Bryler_9, Cain_9
- Track 24 : Shadow1_8
- Track 25 : Ximenita_10
- Track 26 : SirPhilip_9
- Track 27 : Marshawn_11
- Track 28 : Syra333_9
- Track 29 : TClif_9
- Track 30 : Yuna_10
- Track 31 : Krueger_9
- Track 32 : Unicorn_9, PhelpsODU_9
- Track 33 : Ibrahim_5, ZenTime222_5, RonRayGun_5, Bernal13_5, Whitty_5, Nairb_5
- Track 34 : Mendokysei_4
- Track 35 : DS6A_7

- Track 36 : IdentityCrisis_4

Summary of Final Annotations (See graph section above for start numbers):

The start number called the most often in the published annotations is 21, it was called in 42 of the 53 non-draft genes in the pham.

Genes that call this "Most Annotated" start:

- BoostSeason_6, Bryler_9, Cain_9, Chris_9, Curiosium_11, Dartin_10, DismalFunk_6, DismalStressor_6, Efra2_10, Findley_6, Guanica15_10, IdentityCrisis_4, KiSi_9, Krueger_9, LastHope_10, LeMond_9, Marcoliusprime_6, MarkPhew_9, Marshawn_11, McMater_10, Milly_6, Mufasa_6, Nibb_9, Niklas_10, Oscar_9, Peanam_10, PhelpsODU_9, Phrank_9, Rando14_8, Richo_10, Scarlett_9, Shadow1_8, Shaobing_10, SirPhilip_9, Strobilo_6, Sunflower1121_8, Syra333_9, TClif_9, TM4_6, TingHuaYa_10, Unicorn_9, Validus_10, Ximenita_10, Yuna_10, Yunkel11_10, ZoeJ_6,

Genes that have the "Most Annotated" start but do not call it:

- Omnicron_8,

Genes that do not have the "Most Annotated" start:

- Bernal13_5, DS6A_7, Ibrahim_5, Jolie2_4, Lemuria_4, Mendokysei_4, Mercurio_5, Nairb_5, RonRayGun_5, Whitty_5, ZenTime222_5,

Summary by start number:

Start 2:

- Found in 3 of 58 (5.2%) of genes in pham
- Manual Annotations of this start: 2 of 53
- Called 100.0% of time when present
- Phage (with cluster) where this start called: Jolie2_4 (G4), Lemuria_4 (G4), Mercurio_5 (G4),

Start 3:

- Found in 7 of 58 (12.1%) of genes in pham
- Manual Annotations of this start: 7 of 53
- Called 100.0% of time when present
- Phage (with cluster) where this start called: Bernal13_5 (T), Ibrahim_5 (T), Mendokysei_4 (T), Nairb_5 (T), RonRayGun_5 (T), Whitty_5 (T), ZenTime222_5 (T),

Start 11:

- Found in 1 of 58 (1.7%) of genes in pham
- Manual Annotations of this start: 1 of 53
- Called 100.0% of time when present
- Phage (with cluster) where this start called: DS6A_7 (singleton),

Start 21:

- Found in 47 of 58 (81.0%) of genes in pham
- Manual Annotations of this start: 42 of 53
- Called 97.9% of time when present

- Phage (with cluster) where this start called: BoostSeason_6 (K2), Bryler_9 (K6), Cain_9 (K6), Chris_9 (K1), Curiosium_11 (K1), Dartin_10 (K1), DismalFunk_6 (K2), DismalStressor_6 (K2), Efra2_10 (K1), Findley_6 (K2), Guanica15_10 (K1), IdentityCrisis_4 (singleton), KiSi_9 (K1), Krueger_9 (K6), LastHope_10 (K1), LeMond_9 (K1), Marcoliusprime_6 (K2), MarkPhew_9 (K1), Marshawn_11 (K6), McMater_10 (K1), Milly_6 (K2), Mufasa_6 (K2), Nibb_9 (K1), Niklas_10 (K1), Oscar_9 (K1), Peanam_10 (K1), PhelpsODU_9 (K6), Phrank_9 (K6), Rando14_8 (K5), Richo_10 (K1), Scarlett_9 (K1), Shadow1_8 (K6), Shaobing_10 (K1), SirPhilip_9 (K6), Strobilo_6 (K2), Sunflower1121_8 (K6), Syra333_9 (K6), TClif_9 (K6), TM4_6 (K2), TingHuaYa_10 (K1), Unicorn_9 (K6), Validus_10 (K1), Ximenita_10 (K6), Yuna_10 (K6), Yunkel11_10 (K1), ZoeJ_6 (K2),

Start 25:

- Found in 2 of 58 (3.4%) of genes in pham
- Manual Annotations of this start: 1 of 53
- Called 50.0% of time when present
- Phage (with cluster) where this start called: Omnicron_8 (K5),

Summary by clusters:

There are 7 clusters represented in this pham: singleton, G4, K2, K1, T, K5, K6,

Info for manual annotations of cluster G4:

- Start number 2 was manually annotated 2 times for cluster G4.

Info for manual annotations of cluster K1:

- Start number 21 was manually annotated 16 times for cluster K1.

Info for manual annotations of cluster K2:

- Start number 21 was manually annotated 10 times for cluster K2.

Info for manual annotations of cluster K5:

- Start number 21 was manually annotated 1 time for cluster K5.
- Start number 25 was manually annotated 1 time for cluster K5.

Info for manual annotations of cluster K6:

- Start number 21 was manually annotated 14 times for cluster K6.

Info for manual annotations of cluster T:

- Start number 3 was manually annotated 7 times for cluster T.

Gene Information:

Gene: Bernal13_5 Start: 4170, Stop: 5918, Start Num: 3

Candidate Starts for Bernal13_5:

(Start: 3 @4170 has 7 MA's), (14, 4239), (52, 4575), (70, 4737), (73, 4773), (80, 4827), (93, 4944), (96, 4992), (109, 5127), (124, 5265), (141, 5469), (142, 5472), (143, 5475), (144, 5493), (156, 5598), (169, 5718), (170, 5721), (174, 5796), (180, 5862),

Gene: BoostSeason_6 Start: 3571, Stop: 5079, Start Num: 21

Candidate Starts for BoostSeason_6:

(Start: 21 @3571 has 42 MA's), (29, 3649), (49, 3871), (56, 3949), (63, 3985), (66, 4006), (69, 4033), (71, 4042), (74, 4081), (79, 4102), (86, 4147), (89, 4159), (94, 4198), (99, 4273), (132, 4498), (135, 4522), (145, 4663), (149, 4714), (156, 4756), (164, 4816), (169, 4876), (172, 4927), (174, 4954), (175, 4966), (181, 5023),

Gene: Bryler_9 Start: 4458, Stop: 5957, Start Num: 21

Candidate Starts for Bryler_9:

(4, 4317), (Start: 21 @4458 has 42 MA's), (29, 4536), (62, 4794), (66, 4818), (71, 4854), (74, 4893), (78, 4917), (92, 5022), (96, 5067), (104, 5136), (107, 5151), (108, 5175), (110, 5190), (112, 5232), (137, 5445), (145, 5541), (149, 5592), (152, 5607), (156, 5634), (165, 5706), (169, 5754), (174, 5832), (175, 5844), (176, 5874),

Gene: Cain_9 Start: 4458, Stop: 5945, Start Num: 21

Candidate Starts for Cain_9:

(4, 4317), (Start: 21 @4458 has 42 MA's), (29, 4536), (62, 4794), (66, 4818), (71, 4854), (74, 4893), (78, 4917), (92, 5022), (96, 5067), (104, 5136), (107, 5151), (108, 5175), (110, 5190), (112, 5232), (137, 5433), (145, 5529), (149, 5580), (152, 5595), (156, 5622), (165, 5694), (169, 5742), (174, 5820), (175, 5832), (176, 5862),

Gene: Chris_9 Start: 4465, Stop: 5928, Start Num: 21

Candidate Starts for Chris_9:

(10, 4372), (15, 4408), (Start: 21 @4465 has 42 MA's), (29, 4543), (33, 4579), (56, 4768), (62, 4801), (74, 4900), (91, 5026), (96, 5074), (104, 5143), (107, 5158), (112, 5239), (121, 5278), (137, 5416), (145, 5512), (147, 5524), (150, 5566), (156, 5605), (164, 5665), (165, 5677), (168, 5722), (169, 5725), (174, 5803), (175, 5815), (176, 5845), (179, 5860), (182, 5875), (185, 5905),

Gene: Curiosium_11 Start: 4917, Stop: 6440, Start Num: 21

Candidate Starts for Curiosium_11:

(Start: 21 @4917 has 42 MA's), (29, 4995), (49, 5184), (62, 5295), (66, 5319), (71, 5355), (74, 5394), (76, 5409), (78, 5418), (91, 5520), (92, 5526), (96, 5568), (107, 5652), (112, 5733), (118, 5751), (137, 5919), (145, 6015), (156, 6108), (164, 6168), (165, 6180), (169, 6228), (174, 6315), (175, 6327), (182, 6387), (185, 6417),

Gene: DS6A_7 Start: 5169, Stop: 6722, Start Num: 11

Candidate Starts for DS6A_7:

(Start: 11 @5169 has 1 MA's), (19, 5262), (24, 5310), (26, 5331), (30, 5391), (37, 5418), (39, 5442), (40, 5457), (41, 5460), (45, 5502), (51, 5523), (54, 5571), (60, 5628), (66, 5655), (72, 5697), (74, 5730), (83, 5751), (92, 5808), (93, 5814), (98, 5892), (107, 5934), (135, 6165), (136, 6198), (145, 6306), (151, 6366), (152, 6372), (153, 6381), (169, 6519), (174, 6597), (175, 6609), (181, 6666), (185, 6699),

Gene: Dartin_10 Start: 4612, Stop: 6129, Start Num: 21

Candidate Starts for Dartin_10:

(Start: 21 @4612 has 42 MA's), (29, 4690), (49, 4879), (53, 4897), (66, 5014), (69, 5041), (71, 5050), (74, 5089), (76, 5104), (78, 5113), (91, 5215), (92, 5221), (95, 5251), (96, 5263), (107, 5347), (112, 5428), (131, 5545), (137, 5617), (145, 5713), (149, 5764), (156, 5806), (165, 5878), (169, 5926), (174, 6004), (175, 6016), (182, 6076),

Gene: DismalFunk_6 Start: 3574, Stop: 5094, Start Num: 21

Candidate Starts for DismalFunk_6:

(Start: 21 @3574 has 42 MA's), (29, 3652), (49, 3874), (56, 3952), (63, 3988), (66, 4009), (69, 4036), (74, 4084), (79, 4105), (86, 4150), (89, 4162), (94, 4201), (99, 4276), (135, 4537), (145, 4678), (149, 4729), (156, 4771), (164, 4831), (169, 4891), (174, 4969), (175, 4981), (181, 5038),

Gene: DismalStressor_6 Start: 3574, Stop: 5094, Start Num: 21

Candidate Starts for DismalStressor_6:

(Start: 21 @3574 has 42 MA's), (29, 3652), (49, 3874), (56, 3952), (63, 3988), (66, 4009), (69, 4036), (74, 4084), (79, 4105), (86, 4150), (89, 4162), (94, 4201), (99, 4276), (135, 4537), (145, 4678), (149, 4729), (156, 4771), (164, 4831), (169, 4891), (174, 4969), (175, 4981), (181, 5038),

Gene: Efra2_10 Start: 4520, Stop: 6043, Start Num: 21

Candidate Starts for Efra2_10:

(9, 4400), (Start: 21 @4520 has 42 MA's), (29, 4598), (38, 4664), (49, 4787), (71, 4958), (74, 4997), (76, 5012), (78, 5021), (91, 5123), (92, 5129), (96, 5171), (107, 5255), (112, 5336), (118, 5354), (137, 5522), (145, 5618), (156, 5711), (164, 5771), (165, 5783), (168, 5828), (169, 5831), (174, 5918), (175, 5930), (182, 5990),

Gene: Findley_6 Start: 3574, Stop: 5094, Start Num: 21

Candidate Starts for Findley_6:

(Start: 21 @3574 has 42 MA's), (29, 3652), (49, 3874), (56, 3952), (63, 3988), (66, 4009), (69, 4036), (74, 4084), (79, 4105), (86, 4150), (89, 4162), (94, 4201), (99, 4276), (135, 4537), (145, 4678), (149, 4729), (156, 4771), (164, 4831), (169, 4891), (174, 4969), (175, 4981), (181, 5038),

Gene: Guanica15_10 Start: 4536, Stop: 6059, Start Num: 21

Candidate Starts for Guanica15_10:

(9, 4416), (Start: 21 @4536 has 42 MA's), (29, 4614), (38, 4680), (49, 4803), (71, 4974), (74, 5013), (76, 5028), (78, 5037), (91, 5139), (92, 5145), (96, 5187), (107, 5271), (112, 5352), (118, 5370), (137, 5538), (145, 5634), (156, 5727), (164, 5787), (165, 5799), (168, 5844), (169, 5847), (174, 5934), (175, 5946), (182, 6006),

Gene: Ibrahim_5 Start: 4170, Stop: 5918, Start Num: 3

Candidate Starts for Ibrahim_5:

(Start: 3 @4170 has 7 MA's), (14, 4239), (52, 4575), (70, 4737), (73, 4773), (80, 4827), (93, 4944), (96, 4992), (109, 5127), (124, 5265), (141, 5469), (142, 5472), (143, 5475), (144, 5493), (156, 5598), (169, 5718), (170, 5721), (174, 5796), (180, 5862),

Gene: IdentityCrisis_4 Start: 3597, Stop: 5054, Start Num: 21

Candidate Starts for IdentityCrisis_4:

(Start: 21 @3597 has 42 MA's), (43, 3804), (53, 3846), (55, 3888), (62, 3939), (69, 3990), (74, 4038), (77, 4059), (84, 4116), (97, 4230), (105, 4260), (122, 4386), (126, 4410), (128, 4419), (130, 4443), (156, 4722), (157, 4728), (160, 4746), (169, 4842), (173, 4917), (174, 4920), (175, 4932), (180, 4989), (185, 5031),

Gene: Jolie2_4 Start: 3415, Stop: 5349, Start Num: 2

Candidate Starts for Jolie2_4:

(Start: 2 @3415 has 2 MA's), (13, 3484), (18, 3562), (34, 3721), (38, 3748), (46, 3847), (59, 3976), (61, 3994), (65, 4006), (75, 4102), (114, 4528), (117, 4561), (133, 4702), (137, 4768), (149, 4963), (150, 4966), (155, 4999), (162, 5071), (167, 5110), (168, 5137), (169, 5140), (174, 5218), (175, 5230), (179, 5278), (180, 5287), (181, 5290), (184, 5323), (185, 5326), (187, 5341),

Gene: KiSi_9 Start: 4421, Stop: 5917, Start Num: 21

Candidate Starts for KiSi_9:

(Start: 21 @4421 has 42 MA's), (29, 4499), (62, 4757), (66, 4781), (68, 4793), (71, 4817), (74, 4856), (96, 5030), (100, 5081), (107, 5114), (112, 5195), (121, 5234), (123, 5240), (131, 5300), (137, 5372), (145, 5501), (147, 5513), (153, 5576), (156, 5594), (158, 5603), (162, 5645), (168, 5711), (169, 5714), (172, 5765), (174, 5792), (177, 5843), (181, 5861), (185, 5894),

Gene: Krueger_9 Start: 4465, Stop: 5934, Start Num: 21

Candidate Starts for Krueger_9:

(4, 4324), (Start: 21 @4465 has 42 MA's), (29, 4543), (62, 4801), (66, 4825), (67, 4828), (74, 4900), (76, 4915), (78, 4924), (92, 5029), (96, 5074), (107, 5158), (108, 5182), (112, 5239), (137, 5422), (145, 5518), (147, 5530), (164, 5671), (169, 5731), (174, 5809), (175, 5821), (185, 5911),

Gene: LastHope_10 Start: 4563, Stop: 6086, Start Num: 21

Candidate Starts for LastHope_10:

(Start: 21 @4563 has 42 MA's), (29, 4641), (49, 4830), (62, 4941), (66, 4965), (71, 5001), (74, 5040), (76, 5055), (78, 5064), (91, 5166), (92, 5172), (96, 5214), (107, 5298), (112, 5379), (118, 5397), (131, 5493), (137, 5565), (145, 5661), (156, 5754), (164, 5814), (165, 5826), (168, 5871), (169, 5874), (174, 5961), (175, 5973), (182, 6033),

Gene: LeMond_9 Start: 4421, Stop: 5917, Start Num: 21

Candidate Starts for LeMond_9:

(Start: 21 @4421 has 42 MA's), (29, 4499), (62, 4757), (66, 4781), (68, 4793), (71, 4817), (74, 4856), (96, 5030), (100, 5081), (107, 5114), (112, 5195), (121, 5234), (123, 5240), (131, 5300), (137, 5372), (145, 5501), (147, 5513), (153, 5576), (156, 5594), (158, 5603), (162, 5645), (168, 5711), (169, 5714), (172, 5765), (174, 5792), (177, 5843), (181, 5861),

Gene: Lemuria_4 Start: 3443, Stop: 5377, Start Num: 2

Candidate Starts for Lemuria_4:

(Start: 2 @3443 has 2 MA's), (13, 3512), (18, 3590), (34, 3749), (42, 3836), (46, 3875), (48, 3890), (57, 3998), (59, 4004), (65, 4034), (75, 4130), (127, 4691), (133, 4739), (137, 4805), (149, 5000), (150, 5003), (155, 5036), (167, 5147), (168, 5174), (169, 5177), (174, 5249), (175, 5261), (180, 5315), (181, 5318), (184, 5351), (185, 5354), (187, 5369),

Gene: Marcoliusprime_6 Start: 3574, Stop: 5094, Start Num: 21

Candidate Starts for Marcoliusprime_6:

(Start: 21 @3574 has 42 MA's), (29, 3652), (49, 3874), (56, 3952), (63, 3988), (66, 4009), (69, 4036), (74, 4084), (79, 4105), (86, 4150), (89, 4162), (94, 4201), (99, 4276), (135, 4537), (145, 4678), (149, 4729), (156, 4771), (164, 4831), (169, 4891), (174, 4969), (175, 4981), (181, 5038),

Gene: MarkPhew_9 Start: 4375, Stop: 5835, Start Num: 21

Candidate Starts for MarkPhew_9:

(Start: 21 @4375 has 42 MA's), (29, 4453), (33, 4489), (62, 4711), (66, 4735), (68, 4747), (74, 4810), (96, 4984), (100, 5035), (104, 5053), (107, 5068), (112, 5149), (121, 5188), (137, 5323), (145, 5419), (147, 5431), (149, 5470), (156, 5512), (164, 5572), (165, 5584), (168, 5629), (169, 5632), (174, 5710), (175, 5722), (176, 5752), (179, 5767), (182, 5782), (185, 5812),

Gene: Marshawn_11 Start: 4973, Stop: 6472, Start Num: 21

Candidate Starts for Marshawn_11:

(15, 4910), (Start: 21 @4973 has 42 MA's), (29, 5051), (36, 5105), (39, 5132), (44, 5195), (49, 5246), (53, 5264), (62, 5357), (64, 5366), (66, 5381), (69, 5408), (71, 5417), (74, 5456), (76, 5471), (96, 5621), (107, 5705), (112, 5786), (129, 5870), (134, 5903), (137, 5960), (145, 6056), (146, 6062), (147, 6068), (149, 6107), (156, 6149), (164, 6209), (165, 6221), (168, 6266), (169, 6269), (174, 6347), (176, 6389), (181, 6416), (182, 6419), (185, 6449),

Gene: McMater_10 Start: 4612, Stop: 6129, Start Num: 21

Candidate Starts for McMater_10:

(Start: 21 @4612 has 42 MA's), (29, 4690), (49, 4879), (53, 4897), (66, 5014), (69, 5041), (71, 5050), (74, 5089), (76, 5104), (78, 5113), (91, 5215), (92, 5221), (95, 5251), (96, 5263), (107, 5347), (112, 5428), (131, 5545), (137, 5617), (145, 5713), (149, 5764), (156, 5806), (165, 5878), (169, 5926), (174,

6004), (175, 6016), (182, 6076),

Gene: Mendokysej_4 Start: 4077, Stop: 5855, Start Num: 3

Candidate Starts for Mendokysej_4:

(Start: 3 @4077 has 7 MA's), (17, 4209), (27, 4296), (32, 4344), (52, 4482), (64, 4590), (70, 4644), (87, 4803), (90, 4830), (93, 4851), (109, 5034), (111, 5091), (114, 5121), (138, 5358), (143, 5412), (156, 5535), (161, 5583), (162, 5586), (169, 5655), (170, 5658), (174, 5733), (175, 5745), (180, 5799),

Gene: Mercurio_5 Start: 4089, Stop: 6023, Start Num: 2

Candidate Starts for Mercurio_5:

(1, 3894), (Start: 2 @4089 has 2 MA's), (8, 4125), (13, 4158), (16, 4203), (18, 4236), (34, 4395), (42, 4482), (46, 4521), (59, 4650), (65, 4680), (75, 4776), (114, 5211), (116, 5238), (119, 5259), (133, 5385), (137, 5451), (139, 5499), (149, 5646), (150, 5649), (155, 5682), (159, 5712), (162, 5754), (167, 5793), (169, 5823), (174, 5895), (175, 5907), (178, 5949), (180, 5961), (181, 5964), (184, 5997), (185, 6000), (187, 6015),

Gene: Milly_6 Start: 3574, Stop: 5094, Start Num: 21

Candidate Starts for Milly_6:

(Start: 21 @3574 has 42 MA's), (29, 3652), (49, 3874), (56, 3952), (63, 3988), (66, 4009), (69, 4036), (74, 4084), (79, 4105), (86, 4150), (89, 4162), (94, 4201), (99, 4276), (135, 4537), (145, 4678), (149, 4729), (156, 4771), (164, 4831), (169, 4891), (174, 4969), (175, 4981), (181, 5038),

Gene: Mufasa_6 Start: 3571, Stop: 5079, Start Num: 21

Candidate Starts for Mufasa_6:

(Start: 21 @3571 has 42 MA's), (29, 3649), (49, 3871), (56, 3949), (63, 3985), (66, 4006), (69, 4033), (71, 4042), (74, 4081), (79, 4102), (86, 4147), (89, 4159), (94, 4198), (99, 4273), (132, 4498), (135, 4522), (145, 4663), (149, 4714), (156, 4756), (164, 4816), (169, 4876), (172, 4927), (174, 4954), (175, 4966), (181, 5023),

Gene: Nairb_5 Start: 4170, Stop: 5918, Start Num: 3

Candidate Starts for Nairb_5:

(Start: 3 @4170 has 7 MA's), (14, 4239), (52, 4575), (70, 4737), (73, 4773), (80, 4827), (93, 4944), (96, 4992), (109, 5127), (124, 5265), (141, 5469), (142, 5472), (143, 5475), (144, 5493), (156, 5598), (169, 5718), (170, 5721), (174, 5796), (180, 5862),

Gene: Nibb_9 Start: 4506, Stop: 5972, Start Num: 21

Candidate Starts for Nibb_9:

(10, 4416), (15, 4452), (Start: 21 @4506 has 42 MA's), (29, 4584), (33, 4620), (62, 4842), (68, 4878), (74, 4941), (96, 5115), (100, 5166), (107, 5199), (112, 5280), (121, 5319), (137, 5460), (145, 5556), (147, 5568), (149, 5607), (156, 5649), (164, 5709), (165, 5721), (168, 5766), (169, 5769), (174, 5847), (175, 5859), (176, 5889), (179, 5904), (181, 5916), (182, 5919), (185, 5949),

Gene: Niklas_10 Start: 4612, Stop: 6129, Start Num: 21

Candidate Starts for Niklas_10:

(Start: 21 @4612 has 42 MA's), (29, 4690), (49, 4879), (53, 4897), (66, 5014), (69, 5041), (71, 5050), (74, 5089), (76, 5104), (78, 5113), (91, 5215), (92, 5221), (95, 5251), (96, 5263), (107, 5347), (112, 5428), (131, 5545), (137, 5617), (145, 5713), (149, 5764), (156, 5806), (165, 5878), (169, 5926), (174, 6004), (175, 6016), (182, 6076),

Gene: Omnicron_8 Start: 4366, Stop: 5994, Start Num: 25

Candidate Starts for Omnicron_8:

(20, 4324), (Start: 21 @4333 has 42 MA's), (22, 4336), (23, 4345), (Start: 25 @4366 has 1 MA's), (28, 4408), (29, 4411), (35, 4453), (38, 4477), (49, 4564), (50, 4567), (55, 4624), (58, 4651), (66, 4699), (67,

4702), (68, 4711), (74, 4777), (77, 4798), (81, 4828), (85, 4870), (88, 4888), (92, 4921), (101, 5050), (102, 5053), (103, 5056), (106, 5071), (113, 5200), (115, 5218), (120, 5266), (134, 5404), (137, 5461), (150, 5632), (156, 5671), (161, 5719), (168, 5788), (169, 5791), (172, 5842), (174, 5869), (175, 5881), (177, 5920), (185, 5971),

Gene: Oscar_9 Start: 4422, Stop: 5918, Start Num: 21

Candidate Starts for Oscar_9:

(Start: 21 @4422 has 42 MA's), (29, 4500), (62, 4758), (66, 4782), (68, 4794), (71, 4818), (74, 4857), (96, 5031), (100, 5082), (107, 5115), (112, 5196), (121, 5235), (123, 5241), (131, 5301), (137, 5373), (145, 5502), (147, 5514), (153, 5577), (156, 5595), (158, 5604), (162, 5646), (168, 5712), (169, 5715), (172, 5766), (174, 5793), (175, 5805), (177, 5844), (181, 5862),

Gene: Peanam_10 Start: 4612, Stop: 6129, Start Num: 21

Candidate Starts for Peanam_10:

(Start: 21 @4612 has 42 MA's), (29, 4690), (49, 4879), (53, 4897), (66, 5014), (69, 5041), (71, 5050), (74, 5089), (76, 5104), (78, 5113), (91, 5215), (92, 5221), (95, 5251), (96, 5263), (107, 5347), (112, 5428), (131, 5545), (137, 5617), (145, 5713), (149, 5764), (156, 5806), (165, 5878), (169, 5926), (174, 6004), (175, 6016), (182, 6076),

Gene: PhelpsODU_9 Start: 4501, Stop: 5985, Start Num: 21

Candidate Starts for PhelpsODU_9:

(4, 4357), (17, 4480), (Start: 21 @4501 has 42 MA's), (29, 4579), (62, 4837), (66, 4861), (74, 4936), (76, 4951), (78, 4960), (92, 5065), (96, 5110), (104, 5179), (107, 5194), (112, 5275), (137, 5464), (145, 5560), (147, 5572), (148, 5593), (154, 5638), (156, 5653), (169, 5773), (174, 5860), (175, 5872),

Gene: Phrank_9 Start: 4464, Stop: 5945, Start Num: 21

Candidate Starts for Phrank_9:

(4, 4323), (Start: 21 @4464 has 42 MA's), (29, 4542), (62, 4800), (66, 4824), (71, 4860), (74, 4899), (78, 4923), (92, 5028), (96, 5073), (104, 5142), (107, 5157), (108, 5181), (110, 5196), (112, 5238), (137, 5433), (145, 5529), (149, 5580), (152, 5595), (156, 5622), (165, 5694), (169, 5742), (174, 5820), (175, 5832), (176, 5862),

Gene: Rando14_8 Start: 4362, Stop: 6023, Start Num: 21

Candidate Starts for Rando14_8:

(5, 4236), (6, 4242), (7, 4245), (20, 4353), (Start: 21 @4362 has 42 MA's), (22, 4365), (23, 4374), (Start: 25 @4395 has 1 MA's), (28, 4437), (29, 4440), (38, 4506), (49, 4593), (50, 4596), (66, 4728), (68, 4740), (74, 4806), (77, 4827), (82, 4878), (85, 4899), (88, 4917), (92, 4950), (101, 5079), (102, 5082), (103, 5085), (113, 5229), (115, 5247), (120, 5295), (134, 5433), (137, 5490), (150, 5661), (151, 5667), (156, 5700), (161, 5748), (166, 5775), (168, 5817), (169, 5820), (172, 5871), (174, 5898), (175, 5910), (177, 5949), (185, 6000),

Gene: Richo_10 Start: 4612, Stop: 6129, Start Num: 21

Candidate Starts for Richo_10:

(Start: 21 @4612 has 42 MA's), (29, 4690), (49, 4879), (53, 4897), (66, 5014), (69, 5041), (71, 5050), (74, 5089), (76, 5104), (78, 5113), (91, 5215), (92, 5221), (95, 5251), (96, 5263), (107, 5347), (112, 5428), (131, 5545), (137, 5617), (145, 5713), (149, 5764), (156, 5806), (165, 5878), (169, 5926), (174, 6004), (175, 6016), (182, 6076),

Gene: RonRayGun_5 Start: 4170, Stop: 5918, Start Num: 3

Candidate Starts for RonRayGun_5:

(Start: 3 @4170 has 7 MA's), (14, 4239), (52, 4575), (70, 4737), (73, 4773), (80, 4827), (93, 4944), (96, 4992), (109, 5127), (124, 5265), (141, 5469), (142, 5472), (143, 5475), (144, 5493), (156, 5598), (169, 5718), (170, 5721), (174, 5796), (180, 5862),

Gene: Scarlett_9 Start: 4421, Stop: 5917, Start Num: 21

Candidate Starts for Scarlett_9:

(Start: 21 @4421 has 42 MA's), (29, 4499), (62, 4757), (66, 4781), (68, 4793), (71, 4817), (74, 4856), (96, 5030), (100, 5081), (107, 5114), (112, 5195), (121, 5234), (123, 5240), (131, 5300), (137, 5372), (145, 5501), (147, 5513), (153, 5576), (156, 5594), (158, 5603), (162, 5645), (168, 5711), (169, 5714), (172, 5765), (174, 5792), (175, 5804), (177, 5843), (181, 5861),

Gene: Shadow1_8 Start: 4372, Stop: 5856, Start Num: 21

Candidate Starts for Shadow1_8:

(4, 4231), (Start: 21 @4372 has 42 MA's), (29, 4450), (62, 4708), (66, 4732), (71, 4768), (74, 4807), (78, 4831), (92, 4936), (96, 4981), (104, 5050), (107, 5065), (108, 5089), (110, 5104), (112, 5146), (137, 5335), (145, 5431), (147, 5443), (148, 5464), (156, 5524), (169, 5644), (174, 5731), (175, 5743),

Gene: Shaobing_10 Start: 4612, Stop: 6129, Start Num: 21

Candidate Starts for Shaobing_10:

(Start: 21 @4612 has 42 MA's), (29, 4690), (49, 4879), (53, 4897), (66, 5014), (69, 5041), (71, 5050), (74, 5089), (76, 5104), (78, 5113), (91, 5215), (92, 5221), (95, 5251), (96, 5263), (107, 5347), (112, 5428), (131, 5545), (137, 5617), (145, 5713), (149, 5764), (156, 5806), (165, 5878), (169, 5926), (174, 6004), (175, 6016), (182, 6076),

Gene: SirPhilip_9 Start: 4316, Stop: 5803, Start Num: 21

Candidate Starts for SirPhilip_9:

(15, 4253), (Start: 21 @4316 has 42 MA's), (29, 4394), (33, 4430), (35, 4436), (58, 4628), (62, 4652), (66, 4676), (69, 4703), (71, 4712), (74, 4751), (76, 4766), (78, 4775), (91, 4877), (92, 4883), (96, 4925), (107, 5009), (112, 5090), (135, 5228), (137, 5273), (140, 5321), (145, 5369), (148, 5405), (158, 5474), (161, 5513), (162, 5516), (163, 5519), (169, 5585), (170, 5588), (171, 5615), (174, 5672), (175, 5684), (176, 5714), (183, 5759), (185, 5780), (186, 5783),

Gene: Strobilo_6 Start: 3574, Stop: 5094, Start Num: 21

Candidate Starts for Strobilo_6:

(Start: 21 @3574 has 42 MA's), (29, 3652), (49, 3874), (56, 3952), (63, 3988), (66, 4009), (69, 4036), (74, 4084), (79, 4105), (86, 4150), (89, 4162), (94, 4201), (99, 4276), (135, 4537), (145, 4678), (149, 4729), (156, 4771), (164, 4831), (169, 4891), (174, 4969), (175, 4981), (181, 5038),

Gene: Sunflower1121_8 Start: 4371, Stop: 5858, Start Num: 21

Candidate Starts for Sunflower1121_8:

(4, 4230), (Start: 21 @4371 has 42 MA's), (29, 4449), (62, 4707), (66, 4731), (71, 4767), (74, 4806), (78, 4830), (92, 4935), (96, 4980), (104, 5049), (107, 5064), (108, 5088), (110, 5103), (112, 5145), (137, 5346), (145, 5442), (149, 5493), (152, 5508), (156, 5535), (165, 5607), (169, 5655), (174, 5733), (175, 5745), (176, 5775),

Gene: Syra333_9 Start: 4473, Stop: 5954, Start Num: 21

Candidate Starts for Syra333_9:

(4, 4332), (Start: 21 @4473 has 42 MA's), (29, 4551), (62, 4809), (66, 4833), (71, 4869), (74, 4908), (76, 4923), (78, 4932), (92, 5037), (96, 5082), (107, 5166), (108, 5190), (110, 5205), (112, 5247), (137, 5442), (145, 5538), (156, 5631), (169, 5751), (174, 5829), (175, 5841), (185, 5931),

Gene: TClif_9 Start: 4411, Stop: 5886, Start Num: 21

Candidate Starts for TClif_9:

(Start: 21 @4411 has 42 MA's), (29, 4489), (31, 4513), (62, 4747), (66, 4771), (69, 4798), (74, 4846), (76, 4861), (78, 4870), (92, 4978), (96, 5020), (107, 5104), (119, 5215), (137, 5374), (156, 5563), (165, 5635), (174, 5761), (182, 5833), (185, 5863),

Gene: TM4_6 Start: 3587, Stop: 5116, Start Num: 21

Candidate Starts for TM4_6:

(Start: 21 @3587 has 42 MA's), (29, 3665), (49, 3887), (56, 3965), (63, 4001), (66, 4022), (69, 4049), (71, 4058), (74, 4097), (79, 4118), (86, 4163), (89, 4175), (94, 4214), (99, 4289), (135, 4550), (145, 4700), (149, 4751), (156, 4793), (164, 4853), (165, 4865), (169, 4913), (172, 4964), (174, 4991), (175, 5003), (181, 5060),

Gene: TingHuaYa_10 Start: 4567, Stop: 6090, Start Num: 21

Candidate Starts for TingHuaYa_10:

(9, 4450), (Start: 21 @4567 has 42 MA's), (29, 4645), (49, 4834), (62, 4945), (66, 4969), (74, 5044), (76, 5059), (78, 5068), (91, 5170), (92, 5176), (96, 5218), (107, 5302), (112, 5383), (118, 5401), (131, 5497), (137, 5569), (145, 5665), (156, 5758), (164, 5818), (165, 5830), (169, 5878), (174, 5965), (175, 5977), (182, 6037),

Gene: Unicorn_9 Start: 4501, Stop: 5985, Start Num: 21

Candidate Starts for Unicorn_9:

(4, 4357), (17, 4480), (Start: 21 @4501 has 42 MA's), (29, 4579), (62, 4837), (66, 4861), (74, 4936), (76, 4951), (78, 4960), (92, 5065), (96, 5110), (104, 5179), (107, 5194), (112, 5275), (137, 5464), (145, 5560), (147, 5572), (148, 5593), (154, 5638), (156, 5653), (169, 5773), (174, 5860), (175, 5872),

Gene: Validus_10 Start: 4528, Stop: 6045, Start Num: 21

Candidate Starts for Validus_10:

(12, 4426), (Start: 21 @4528 has 42 MA's), (26, 4570), (29, 4606), (62, 4906), (66, 4930), (69, 4957), (74, 5005), (76, 5020), (78, 5029), (91, 5131), (95, 5167), (96, 5179), (107, 5263), (112, 5344), (137, 5533), (145, 5629), (149, 5680), (156, 5722), (165, 5794), (168, 5839), (169, 5842), (174, 5920), (175, 5932), (182, 5992),

Gene: Whitty_5 Start: 4170, Stop: 5918, Start Num: 3

Candidate Starts for Whitty_5:

(Start: 3 @4170 has 7 MA's), (14, 4239), (52, 4575), (70, 4737), (73, 4773), (80, 4827), (93, 4944), (96, 4992), (109, 5127), (124, 5265), (141, 5469), (142, 5472), (143, 5475), (144, 5493), (156, 5598), (169, 5718), (170, 5721), (174, 5796), (180, 5862),

Gene: Ximenita_10 Start: 4640, Stop: 6121, Start Num: 21

Candidate Starts for Ximenita_10:

(4, 4499), (Start: 21 @4640 has 42 MA's), (29, 4718), (62, 4976), (66, 5000), (74, 5075), (76, 5090), (78, 5099), (92, 5204), (96, 5249), (107, 5333), (108, 5357), (110, 5372), (112, 5414), (137, 5609), (145, 5705), (156, 5798), (169, 5918), (174, 5996), (175, 6008), (185, 6098),

Gene: Yuna_10 Start: 4624, Stop: 6123, Start Num: 21

Candidate Starts for Yuna_10:

(4, 4480), (12, 4525), (Start: 21 @4624 has 42 MA's), (29, 4702), (62, 4960), (66, 4984), (74, 5059), (76, 5074), (92, 5188), (96, 5236), (100, 5287), (107, 5320), (125, 5476), (137, 5602), (145, 5698), (147, 5710), (156, 5791), (164, 5851), (165, 5863), (168, 5908), (169, 5911), (174, 5998), (175, 6010), (176, 6040), (185, 6100),

Gene: Yunkel11_10 Start: 4536, Stop: 6059, Start Num: 21

Candidate Starts for Yunkel11_10:

(9, 4416), (Start: 21 @4536 has 42 MA's), (29, 4614), (38, 4680), (49, 4803), (71, 4974), (74, 5013), (76, 5028), (78, 5037), (91, 5139), (92, 5145), (96, 5187), (107, 5271), (112, 5352), (118, 5370), (137, 5538), (145, 5634), (156, 5727), (164, 5787), (165, 5799), (168, 5844), (169, 5847), (174, 5934), (175, 5946), (182, 6006),

Gene: ZenTime222_5 Start: 4170, Stop: 5918, Start Num: 3

Candidate Starts for ZenTime222_5:

(Start: 3 @4170 has 7 MA's), (14, 4239), (52, 4575), (70, 4737), (73, 4773), (80, 4827), (93, 4944), (96, 4992), (109, 5127), (124, 5265), (141, 5469), (142, 5472), (143, 5475), (144, 5493), (156, 5598), (169, 5718), (170, 5721), (174, 5796), (180, 5862),

Gene: ZoeJ_6 Start: 3565, Stop: 5052, Start Num: 21

Candidate Starts for ZoeJ_6:

(Start: 21 @3565 has 42 MA's), (29, 3643), (47, 3808), (49, 3853), (56, 3931), (63, 3967), (66, 3988), (69, 4015), (74, 4063), (79, 4084), (86, 4129), (89, 4141), (94, 4180), (99, 4255), (108, 4312), (132, 4471), (135, 4495), (145, 4636), (149, 4687), (156, 4729), (164, 4789), (169, 4849), (172, 4900), (174, 4927), (175, 4939), (181, 4996),