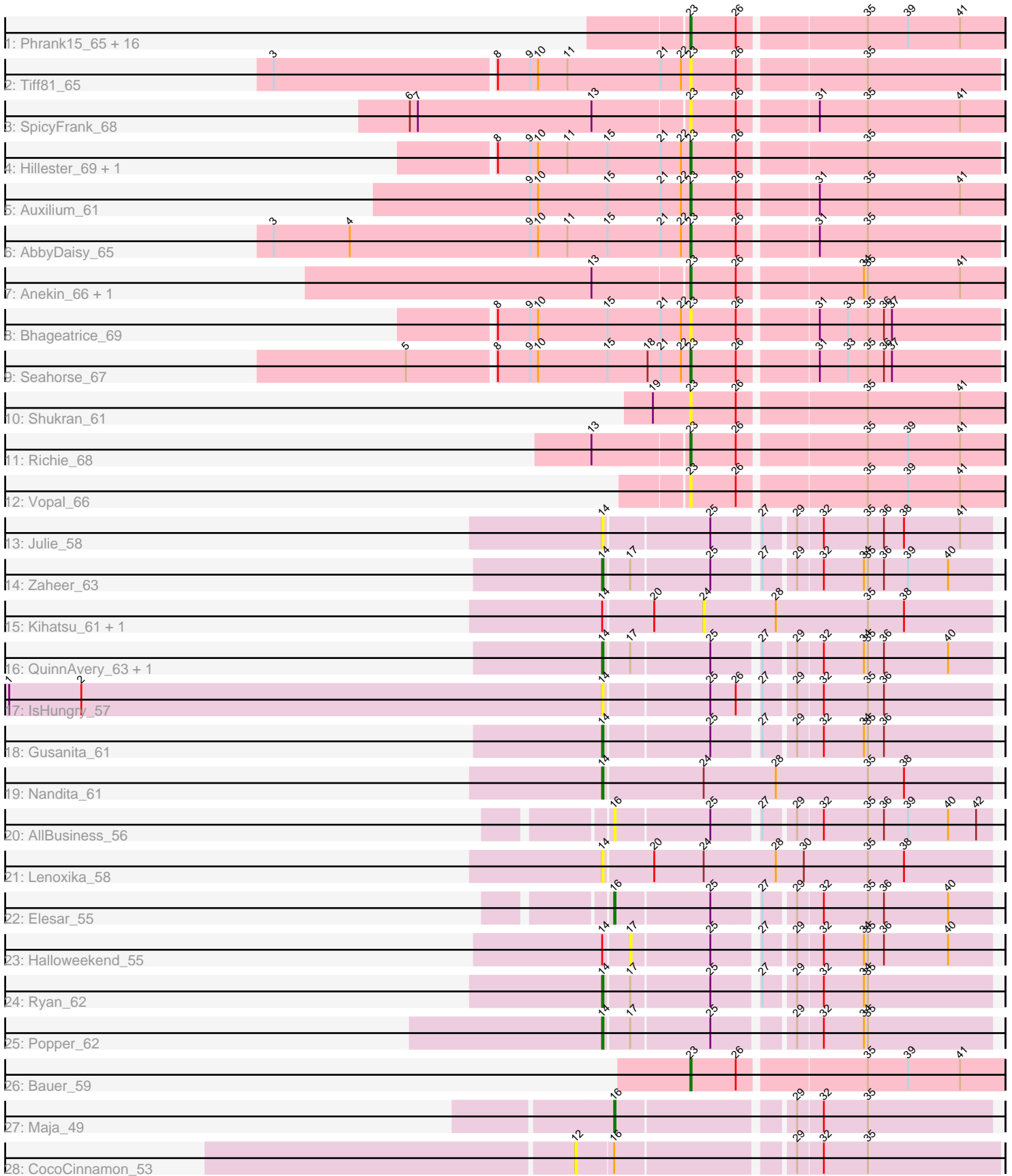


Pham 200376



Note: Tracks are now grouped by subcluster and scaled. Switching in subcluster is indicated by changes in track color. Track scale is now set by default to display the region 30 bp upstream of start 1 to 30 bp downstream of the last possible start. If this default region is judged to be packed too tightly with annotated starts, the track will be further scaled to only show that region of the ORF with annotated starts. This action will be indicated by adding "Zoomed" to the title. For starts, yellow indicates the location of called starts comprised solely of Glimmer/GeneMark auto-annotations, green indicates the location of called starts with at least 1 manual gene annotation.

Pham 200376 Report

This analysis was run 01/18/25 on database version 583.

Pham number 200376 has 48 members, 23 are drafts.

Phages represented in each track:

- Track 1 : Phrank15_65, Faja_64, Lawnathon_65, CookieBear_64, MidnightRain_68, BlueShadow_66, Gorpy_64, YoungHarleezy_64, Isolde_63, Aikyam_63, AdaS_62, MaterMagnus_65, Windest_67, Raphaella_63, BenchScraper_63, BillyTP_66, Sakai_63
- Track 2 : Tiff81_65
- Track 3 : SpicyFrank_68
- Track 4 : Hillester_69, RadFad_69
- Track 5 : Auxilium_61
- Track 6 : AbbyDaisy_65
- Track 7 : Anekin_66, BlackSpider_52
- Track 8 : Bhageatrice_69
- Track 9 : Seahorse_67
- Track 10 : Shukran_61
- Track 11 : Richie_68
- Track 12 : Vopal_66
- Track 13 : Julie_58
- Track 14 : Zaheer_63
- Track 15 : Kihatsu_61, Ichiang_57
- Track 16 : QuinnAvery_63, Cole_57
- Track 17 : IsHungry_57
- Track 18 : Gusanita_61
- Track 19 : Nandita_61
- Track 20 : AllBusiness_56
- Track 21 : Lenoxika_58
- Track 22 : Elesar_55
- Track 23 : Halloweekend_55
- Track 24 : Ryan_62
- Track 25 : Popper_62
- Track 26 : Bauer_59
- Track 27 : Maja_49
- Track 28 : CocoCinnamon_53

Summary of Final Annotations (See graph section above for start numbers):

The start number called the most often in the published annotations is 23, it was called in 16 of the 25 non-draft genes in the pham.

Genes that call this "Most Annotated" start:

- AbbyDaisy_65, AdaS_62, Aikyam_63, Anekin_66, Auxilium_61, Bauer_59, BenchScraper_63, Bhageatrice_69, BillyTP_66, BlackSpider_52, BlueShadow_66, CookieBear_64, Faja_64, Gorpy_64, Hillester_69, Isolde_63, Lawnathon_65, MaterMagnus_65, MidnightRain_68, Phrank15_65, RadFad_69, Raphaella_63, Richie_68, Sakai_63, Seahorse_67, Shukran_61, SpicyFrank_68, Tiff81_65, Vopal_66, Windest_67, YoungHarleezy_64,

Genes that have the "Most Annotated" start but do not call it:

-

Genes that do not have the "Most Annotated" start:

- AllBusiness_56, CocoCinnamon_53, Cole_57, Elesar_55, Gusanita_61, Halloweekend_55, Ichiang_57, IsHungry_57, Julie_58, Kihatsu_61, Lenoxika_58, Maja_49, Nandita_61, Popper_62, QuinnAvery_63, Ryan_62, Zaheer_63,

Summary by start number:

Start 12:

- Found in 1 of 48 (2.1%) of genes in pham
- No Manual Annotations of this start.
- Called 100.0% of time when present
- Phage (with cluster) where this start called: CocoCinnamon_53 (FO),

Start 14:

- Found in 13 of 48 (27.1%) of genes in pham
- Manual Annotations of this start: 7 of 25
- Called 76.9% of time when present
- Phage (with cluster) where this start called: Cole_57 (FF), Gusanita_61 (FF), IsHungry_57 (FF), Julie_58 (FF), Lenoxika_58 (FF), Nandita_61 (FF), Popper_62 (FF), QuinnAvery_63 (FF), Ryan_62 (FF), Zaheer_63 (FF),

Start 16:

- Found in 4 of 48 (8.3%) of genes in pham
- Manual Annotations of this start: 2 of 25
- Called 75.0% of time when present
- Phage (with cluster) where this start called: AllBusiness_56 (FF), Elesar_55 (FF), Maja_49 (FO),

Start 17:

- Found in 6 of 48 (12.5%) of genes in pham
- No Manual Annotations of this start.
- Called 16.7% of time when present
- Phage (with cluster) where this start called: Halloweekend_55 (FF),

Start 23:

- Found in 31 of 48 (64.6%) of genes in pham
- Manual Annotations of this start: 16 of 25
- Called 100.0% of time when present

- Phage (with cluster) where this start called: AbbyDaisy_65 (AY), AdaS_62 (AY), Aikyam_63 (AY), Anekin_66 (AY), Auxilium_61 (AY), Bauer_59 (FN), BenchScraper_63 (AY), Bhageatrice_69 (AY), BillyTP_66 (AY), BlackSpider_52 (FN), BlueShadow_66 (AY), CookieBear_64 (AY), Faja_64 (AY), Gorpy_64 (AY), Hillester_69 (AY), Isolde_63 (AY), Lawnathon_65 (AY), MaterMagnus_65 (AY), MidnightRain_68 (AY), Phrank15_65 (AY), RadFad_69 (AY), Raphaella_63 (AY), Richie_68 (AY), Sakai_63 (AY), Seahorse_67 (AY), Shukran_61 (AY), SpicyFrank_68 (AY), Tiff81_65 (AY), Vopal_66 (AY), Windest_67 (AY), YoungHarleezy_64 (AY),

Start 24:

- Found in 4 of 48 (8.3%) of genes in pham
- No Manual Annotations of this start.
- Called 50.0% of time when present
- Phage (with cluster) where this start called: Ichiang_57 (FF), Kihatsu_61 (FF),

Summary by clusters:

There are 4 clusters represented in this pham: AY, FN, FF, FO,

Info for manual annotations of cluster AY:

- Start number 23 was manually annotated 15 times for cluster AY.

Info for manual annotations of cluster FF:

- Start number 14 was manually annotated 7 times for cluster FF.
- Start number 16 was manually annotated 1 time for cluster FF.

Info for manual annotations of cluster FN:

- Start number 23 was manually annotated 1 time for cluster FN.

Info for manual annotations of cluster FO:

- Start number 16 was manually annotated 1 time for cluster FO.

Gene Information:

Gene: AbbyDaisy_65 Start: 35452, Stop: 35673, Start Num: 23

Candidate Starts for AbbyDaisy_65:

(3, 35143), (4, 35200), (9, 35335), (10, 35341), (11, 35362), (15, 35392), (21, 35431), (22, 35446), (Start: 23 @35452 has 16 MA's), (26, 35485), (31, 35539), (35, 35575),

Gene: AdaS_62 Start: 32812, Stop: 33036, Start Num: 23

Candidate Starts for AdaS_62:

(Start: 23 @32812 has 16 MA's), (26, 32845), (35, 32935), (39, 32965), (41, 33004),

Gene: Aikyam_63 Start: 33131, Stop: 33355, Start Num: 23

Candidate Starts for Aikyam_63:

(Start: 23 @33131 has 16 MA's), (26, 33164), (35, 33254), (39, 33284), (41, 33323),

Gene: AllBusiness_56 Start: 38932, Stop: 39195, Start Num: 16

Candidate Starts for AllBusiness_56:

(Start: 16 @38932 has 2 MA's), (25, 39001), (27, 39031), (29, 39052), (32, 39070), (35, 39103), (36, 39115), (39, 39133), (40, 39163), (42, 39184),

Gene: Anekin_66 Start: 35586, Stop: 35810, Start Num: 23

Candidate Starts for Anekin_66:

(13, 35517), (Start: 23 @35586 has 16 MA's), (26, 35619), (34, 35706), (35, 35709), (41, 35778),

Gene: Auxilium_61 Start: 32424, Stop: 32648, Start Num: 23

Candidate Starts for Auxilium_61:

(9, 32307), (10, 32313), (15, 32364), (21, 32403), (22, 32418), (Start: 23 @32424 has 16 MA's), (26, 32457), (31, 32511), (35, 32547), (41, 32616),

Gene: Bauer_59 Start: 33224, Stop: 33448, Start Num: 23

Candidate Starts for Bauer_59:

(Start: 23 @33224 has 16 MA's), (26, 33257), (35, 33347), (39, 33377), (41, 33416),

Gene: BenchScraper_63 Start: 34323, Stop: 34547, Start Num: 23

Candidate Starts for BenchScraper_63:

(Start: 23 @34323 has 16 MA's), (26, 34356), (35, 34446), (39, 34476), (41, 34515),

Gene: Bhageatrice_69 Start: 37265, Stop: 37486, Start Num: 23

Candidate Starts for Bhageatrice_69:

(8, 37124), (9, 37148), (10, 37154), (15, 37205), (21, 37244), (22, 37259), (Start: 23 @37265 has 16 MA's), (26, 37298), (31, 37352), (33, 37373), (35, 37388), (36, 37400), (37, 37406),

Gene: BillyTP_66 Start: 36178, Stop: 36402, Start Num: 23

Candidate Starts for BillyTP_66:

(Start: 23 @36178 has 16 MA's), (26, 36211), (35, 36301), (39, 36331), (41, 36370),

Gene: BlackSpider_52 Start: 31839, Stop: 32063, Start Num: 23

Candidate Starts for BlackSpider_52:

(13, 31770), (Start: 23 @31839 has 16 MA's), (26, 31872), (34, 31959), (35, 31962), (41, 32031),

Gene: BlueShadow_66 Start: 34968, Stop: 35192, Start Num: 23

Candidate Starts for BlueShadow_66:

(Start: 23 @34968 has 16 MA's), (26, 35001), (35, 35091), (39, 35121), (41, 35160),

Gene: CocoCinnamon_53 Start: 32576, Stop: 32872, Start Num: 12

Candidate Starts for CocoCinnamon_53:

(12, 32576), (Start: 16 @32603 has 2 MA's), (29, 32723), (32, 32741), (35, 32774),

Gene: Cole_57 Start: 37556, Stop: 37825, Start Num: 14

Candidate Starts for Cole_57:

(Start: 14 @37556 has 7 MA's), (17, 37574), (25, 37631), (27, 37661), (29, 37682), (32, 37700), (34, 37730), (35, 37733), (36, 37745), (40, 37793),

Gene: CookieBear_64 Start: 34562, Stop: 34786, Start Num: 23

Candidate Starts for CookieBear_64:

(Start: 23 @34562 has 16 MA's), (26, 34595), (35, 34685), (39, 34715), (41, 34754),

Gene: Elesar_55 Start: 38817, Stop: 39080, Start Num: 16

Candidate Starts for Elesar_55:

(Start: 16 @38817 has 2 MA's), (25, 38886), (27, 38916), (29, 38937), (32, 38955), (35, 38988), (36, 39000), (40, 39048),

Gene: Faja_64 Start: 35937, Stop: 36161, Start Num: 23
Candidate Starts for Faja_64:
(Start: 23 @35937 has 16 MA's), (26, 35970), (35, 36060), (39, 36090), (41, 36129),

Gene: Gorpy_64 Start: 35554, Stop: 35778, Start Num: 23
Candidate Starts for Gorpy_64:
(Start: 23 @35554 has 16 MA's), (26, 35587), (35, 35677), (39, 35707), (41, 35746),

Gene: Gusanita_61 Start: 38513, Stop: 38782, Start Num: 14
Candidate Starts for Gusanita_61:
(Start: 14 @38513 has 7 MA's), (25, 38588), (27, 38618), (29, 38639), (32, 38657), (34, 38687), (35, 38690), (36, 38702),

Gene: Halloweekend_55 Start: 37657, Stop: 37908, Start Num: 17
Candidate Starts for Halloweekend_55:
(Start: 14 @37639 has 7 MA's), (17, 37657), (25, 37714), (27, 37744), (29, 37765), (32, 37783), (34, 37813), (35, 37816), (36, 37828), (40, 37876),

Gene: Hillester_69 Start: 36029, Stop: 36250, Start Num: 23
Candidate Starts for Hillester_69:
(8, 35888), (9, 35912), (10, 35918), (11, 35939), (15, 35969), (21, 36008), (22, 36023), (Start: 23 @36029 has 16 MA's), (26, 36062), (35, 36152),

Gene: Ichiang_57 Start: 37884, Stop: 38099, Start Num: 24
Candidate Starts for Ichiang_57:
(Start: 14 @37812 has 7 MA's), (20, 37848), (24, 37884), (28, 37938), (35, 38007), (38, 38034),

Gene: IsHungry_57 Start: 36577, Stop: 36846, Start Num: 14
Candidate Starts for IsHungry_57:
(1, 36133), (2, 36187), (Start: 14 @36577 has 7 MA's), (25, 36652), (26, 36670), (27, 36682), (29, 36703), (32, 36721), (35, 36754), (36, 36766),

Gene: Isolde_63 Start: 34231, Stop: 34455, Start Num: 23
Candidate Starts for Isolde_63:
(Start: 23 @34231 has 16 MA's), (26, 34264), (35, 34354), (39, 34384), (41, 34423),

Gene: Julie_58 Start: 38233, Stop: 38502, Start Num: 14
Candidate Starts for Julie_58:
(Start: 14 @38233 has 7 MA's), (25, 38308), (27, 38338), (29, 38359), (32, 38377), (35, 38410), (36, 38422), (38, 38437), (41, 38479),

Gene: Kihatsu_61 Start: 39432, Stop: 39647, Start Num: 24
Candidate Starts for Kihatsu_61:
(Start: 14 @39360 has 7 MA's), (20, 39396), (24, 39432), (28, 39486), (35, 39555), (38, 39582),

Gene: Lawnathon_65 Start: 34723, Stop: 34947, Start Num: 23
Candidate Starts for Lawnathon_65:
(Start: 23 @34723 has 16 MA's), (26, 34756), (35, 34846), (39, 34876), (41, 34915),

Gene: Lenoxika_58 Start: 37687, Stop: 37974, Start Num: 14
Candidate Starts for Lenoxika_58:
(Start: 14 @37687 has 7 MA's), (20, 37723), (24, 37759), (28, 37813), (30, 37834), (35, 37882), (38, 37909),

Gene: Maja_49 Start: 33108, Stop: 33371, Start Num: 16
Candidate Starts for Maja_49:
(Start: 16 @33108 has 2 MA's), (29, 33228), (32, 33246), (35, 33279),

Gene: MaterMagnus_65 Start: 35303, Stop: 35527, Start Num: 23
Candidate Starts for MaterMagnus_65:
(Start: 23 @35303 has 16 MA's), (26, 35336), (35, 35426), (39, 35456), (41, 35495),

Gene: MidnightRain_68 Start: 36072, Stop: 36296, Start Num: 23
Candidate Starts for MidnightRain_68:
(Start: 23 @36072 has 16 MA's), (26, 36105), (35, 36195), (39, 36225), (41, 36264),

Gene: Nandita_61 Start: 38374, Stop: 38661, Start Num: 14
Candidate Starts for Nandita_61:
(Start: 14 @38374 has 7 MA's), (24, 38446), (28, 38500), (35, 38569), (38, 38596),

Gene: Phrank15_65 Start: 34854, Stop: 35078, Start Num: 23
Candidate Starts for Phrank15_65:
(Start: 23 @34854 has 16 MA's), (26, 34887), (35, 34977), (39, 35007), (41, 35046),

Gene: Popper_62 Start: 37772, Stop: 38041, Start Num: 14
Candidate Starts for Popper_62:
(Start: 14 @37772 has 7 MA's), (17, 37790), (25, 37847), (29, 37898), (32, 37916), (34, 37946), (35, 37949),

Gene: QuinnAvery_63 Start: 39177, Stop: 39446, Start Num: 14
Candidate Starts for QuinnAvery_63:
(Start: 14 @39177 has 7 MA's), (17, 39195), (25, 39252), (27, 39282), (29, 39303), (32, 39321), (34, 39351), (35, 39354), (36, 39366), (40, 39414),

Gene: RadFad_69 Start: 36029, Stop: 36250, Start Num: 23
Candidate Starts for RadFad_69:
(8, 35888), (9, 35912), (10, 35918), (11, 35939), (15, 35969), (21, 36008), (22, 36023), (Start: 23 @36029 has 16 MA's), (26, 36062), (35, 36152),

Gene: Raphaella_63 Start: 34421, Stop: 34645, Start Num: 23
Candidate Starts for Raphaella_63:
(Start: 23 @34421 has 16 MA's), (26, 34454), (35, 34544), (39, 34574), (41, 34613),

Gene: Richie_68 Start: 36226, Stop: 36450, Start Num: 23
Candidate Starts for Richie_68:
(13, 36157), (Start: 23 @36226 has 16 MA's), (26, 36259), (35, 36349), (39, 36379), (41, 36418),

Gene: Ryan_62 Start: 38945, Stop: 39214, Start Num: 14
Candidate Starts for Ryan_62:
(Start: 14 @38945 has 7 MA's), (17, 38963), (25, 39020), (27, 39050), (29, 39071), (32, 39089), (34, 39119), (35, 39122),

Gene: Sakai_63 Start: 34265, Stop: 34489, Start Num: 23
Candidate Starts for Sakai_63:
(Start: 23 @34265 has 16 MA's), (26, 34298), (35, 34388), (39, 34418), (41, 34457),

Gene: Seahorse_67 Start: 36536, Stop: 36757, Start Num: 23

Candidate Starts for Seahorse_67:

(5, 36332), (8, 36395), (9, 36419), (10, 36425), (15, 36476), (18, 36506), (21, 36515), (22, 36530), (Start: 23 @36536 has 16 MA's), (26, 36569), (31, 36623), (33, 36644), (35, 36659), (36, 36671), (37, 36677),

Gene: Shukran_61 Start: 33238, Stop: 33462, Start Num: 23

Candidate Starts for Shukran_61:

(19, 33211), (Start: 23 @33238 has 16 MA's), (26, 33271), (35, 33361), (41, 33430),

Gene: SpicyFrank_68 Start: 35824, Stop: 36048, Start Num: 23

Candidate Starts for SpicyFrank_68:

(6, 35620), (7, 35626), (13, 35755), (Start: 23 @35824 has 16 MA's), (26, 35857), (31, 35911), (35, 35947), (41, 36016),

Gene: Tiff81_65 Start: 32949, Stop: 33170, Start Num: 23

Candidate Starts for Tiff81_65:

(3, 32646), (8, 32808), (9, 32832), (10, 32838), (11, 32859), (21, 32928), (22, 32943), (Start: 23 @32949 has 16 MA's), (26, 32982), (35, 33072),

Gene: Vopal_66 Start: 37754, Stop: 37978, Start Num: 23

Candidate Starts for Vopal_66:

(Start: 23 @37754 has 16 MA's), (26, 37787), (35, 37877), (39, 37907), (41, 37946),

Gene: Windest_67 Start: 33781, Stop: 34005, Start Num: 23

Candidate Starts for Windest_67:

(Start: 23 @33781 has 16 MA's), (26, 33814), (35, 33904), (39, 33934), (41, 33973),

Gene: YoungHarleezy_64 Start: 34960, Stop: 35184, Start Num: 23

Candidate Starts for YoungHarleezy_64:

(Start: 23 @34960 has 16 MA's), (26, 34993), (35, 35083), (39, 35113), (41, 35152),

Gene: Zaheer_63 Start: 39067, Stop: 39336, Start Num: 14

Candidate Starts for Zaheer_63:

(Start: 14 @39067 has 7 MA's), (17, 39085), (25, 39142), (27, 39172), (29, 39193), (32, 39211), (34, 39241), (35, 39244), (36, 39256), (39, 39274), (40, 39304),