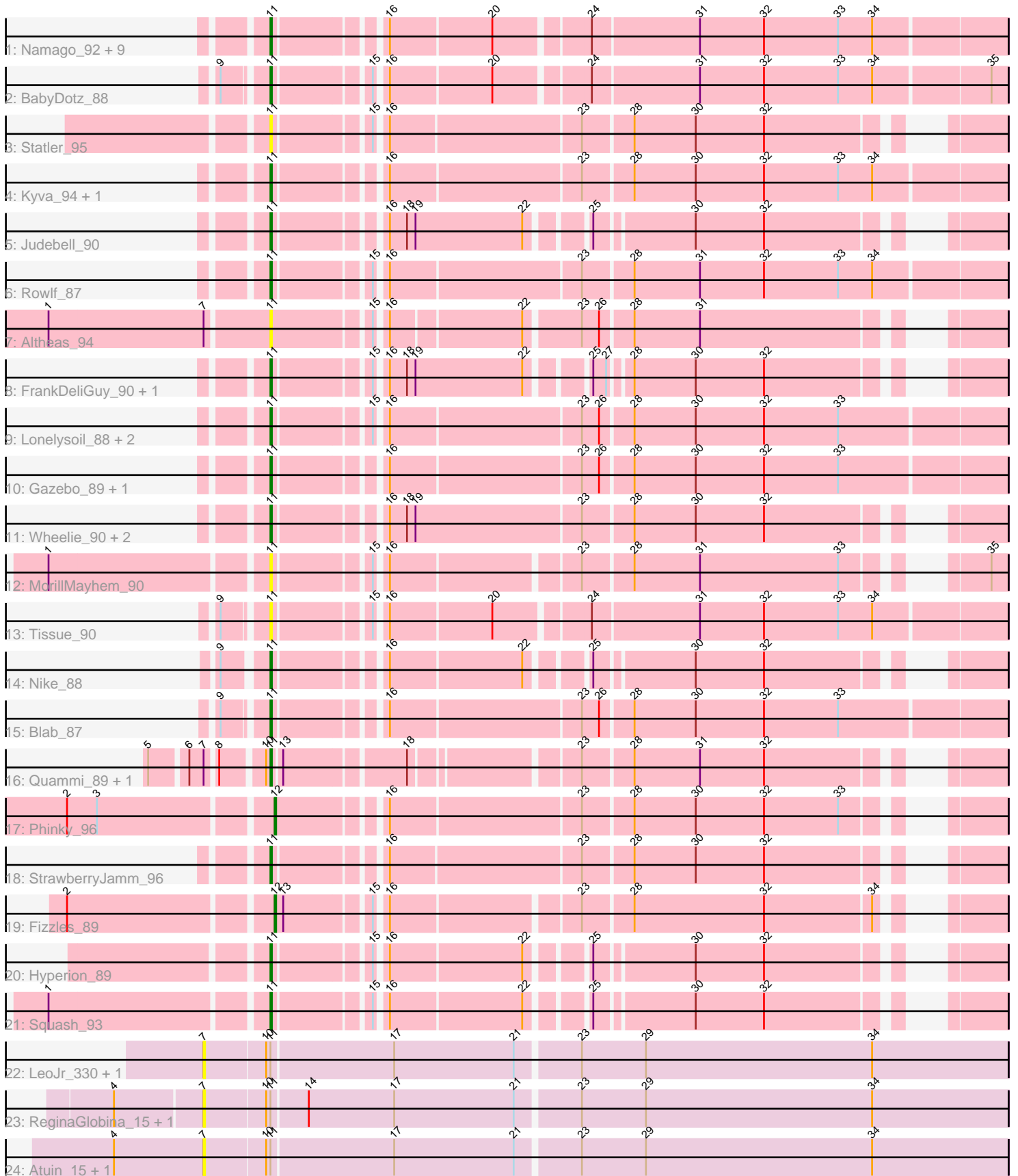


Pham 200377



Note: Tracks are now grouped by subcluster and scaled. Switching in subcluster is indicated by changes in track color. Track scale is now set by default to display the region 30 bp upstream of start 1 to 30 bp downstream of the last possible start. If this default region is judged to be packed too tightly with annotated starts, the track will be further scaled to only show that region of the ORF with annotated starts. This action will be indicated by adding "Zoomed" to the title. For starts, yellow indicates the location of called starts comprised solely of Glimmer/GeneMark auto-annotations, green indicates the location of called starts with at least 1 manual gene annotation.

Pham 200377 Report

This analysis was run 01/18/25 on database version 583.

Pham number 200377 has 44 members, 17 are drafts.

Phages represented in each track:

- Track 1 : Namago_92, EverythinBagel_90, DonaldDuck_92, Zagie_92, SallyK_92, Zhafia_96, Teehee_91, Sillytadpoles_93, Jehoshaphat_92, Llemily_92
- Track 2 : BabyDotz_88
- Track 3 : Statler_95
- Track 4 : Kyva_94, Grassboy_95
- Track 5 : Judebell_90
- Track 6 : Rowlf_87
- Track 7 : Altheas_94
- Track 8 : FrankDeliGuy_90, Casend_91
- Track 9 : Lonelysoil_88, Rudy_88, Mashley_89
- Track 10 : Gazebo_89, AluminumJesus_87
- Track 11 : Wheelie_90, Phabia_90, Wayne3_92
- Track 12 : MorillMayhem_90
- Track 13 : Tissue_90
- Track 14 : Nike_88
- Track 15 : Blab_87
- Track 16 : Quammi_89, Viceroy_88
- Track 17 : Phinky_96
- Track 18 : StrawberryJamm_96
- Track 19 : Fizzles_89
- Track 20 : Hyperion_89
- Track 21 : Squash_93
- Track 22 : LeoJr_330, LeoJr_17
- Track 23 : ReginaGlobina_15, ReginaGlobina_326
- Track 24 : Atuin_15, Atuin_322

Summary of Final Annotations (See graph section above for start numbers):

The start number called the most often in the published annotations is 11, it was called in 25 of the 27 non-draft genes in the pham.

Genes that call this "Most Annotated" start:

- Altheas_94, AluminumJesus_87, BabyDotz_88, Blab_87, Casend_91, DonaldDuck_92, EverythinBagel_90, FrankDeliGuy_90, Gazebo_89, Grassboy_95,

Hyperion_89, Jehoshaphat_92, Judebell_90, Kyva_94, Llemily_92, Lonelysoil_88, Mashley_89, MorillMayhem_90, Namago_92, Nike_88, Phabia_90, Quammi_89, Rowlf_87, Rudy_88, SallyK_92, Sillytadpoles_93, Squash_93, Statler_95, StrawberryJamm_96, Teehee_91, Tissue_90, Viceroy_88, Wayne3_92, Wheelie_90, Zagie_92, Zhafia_96,

Genes that have the "Most Annotated" start but do not call it:

- Atuin_15, Atuin_322, LeoJr_17, LeoJr_330, ReginaGlobina_15, ReginaGlobina_326,

Genes that do not have the "Most Annotated" start:

- Fizzles_89, Phinky_96,

Summary by start number:

Start 7:

- Found in 9 of 44 (20.5%) of genes in pham
- No Manual Annotations of this start.
- Called 66.7% of time when present
- Phage (with cluster) where this start called: Atuin_15 (FC), Atuin_322 (FC), LeoJr_17 (FC), LeoJr_330 (FC), ReginaGlobina_15 (FC), ReginaGlobina_326 (FC),

Start 11:

- Found in 42 of 44 (95.5%) of genes in pham
- Manual Annotations of this start: 25 of 27
- Called 85.7% of time when present
- Phage (with cluster) where this start called: Altheas_94 (EG), AluminumJesus_87 (EG), BabyDotz_88 (EG), Blab_87 (EG), Casend_91 (EG), DonaldDuck_92 (EG), EverythinBagel_90 (EG), FrankDeliGuy_90 (EG), Gazebo_89 (EG), Grassboy_95 (EG), Hyperion_89 (EG), Jehoshaphat_92 (EG), Judebell_90 (EG), Kyva_94 (EG), Llemily_92 (EG), Lonelysoil_88 (EG), Mashley_89 (EG), MorillMayhem_90 (EG), Namago_92 (EG), Nike_88 (EG), Phabia_90 (EG), Quammi_89 (EG), Rowlf_87 (EG), Rudy_88 (EG), SallyK_92 (EG), Sillytadpoles_93 (EG), Squash_93 (EG), Statler_95 (EG), StrawberryJamm_96 (EG), Teehee_91 (EG), Tissue_90 (EG), Viceroy_88 (EG), Wayne3_92 (EG), Wheelie_90 (EG), Zagie_92 (EG), Zhafia_96 (EG),

Start 12:

- Found in 2 of 44 (4.5%) of genes in pham
- Manual Annotations of this start: 2 of 27
- Called 100.0% of time when present
- Phage (with cluster) where this start called: Fizzles_89 (EG), Phinky_96 (EG),

Summary by clusters:

There are 2 clusters represented in this pham: EG, FC,

Info for manual annotations of cluster EG:

- Start number 11 was manually annotated 25 times for cluster EG.
- Start number 12 was manually annotated 2 times for cluster EG.

Gene Information:

Gene: Altheas_94 Start: 57562, Stop: 57122, Start Num: 11

Candidate Starts for Altheas_94:

(1, 57712), (7, 57604), (Start: 11 @57562 has 25 MA's), (15, 57499), (16, 57493), (22, 57406), (23, 57370), (26, 57358), (28, 57337), (31, 57292),

Gene: AluminumJesus_87 Start: 55760, Stop: 55278, Start Num: 11

Candidate Starts for AluminumJesus_87:

(Start: 11 @55760 has 25 MA's), (16, 55694), (23, 55565), (26, 55553), (28, 55532), (30, 55490), (32, 55442), (33, 55391),

Gene: Atuin_15 Start: 7507, Stop: 8061, Start Num: 7

Candidate Starts for Atuin_15:

(4, 7444), (7, 7507), (10, 7549), (Start: 11 @7552 has 25 MA's), (17, 7636), (21, 7720), (23, 7762), (29, 7807), (34, 7966),

Gene: Atuin_322 Start: 184395, Stop: 184949, Start Num: 7

Candidate Starts for Atuin_322:

(4, 184332), (7, 184395), (10, 184437), (Start: 11 @184440 has 25 MA's), (17, 184524), (21, 184608), (23, 184650), (29, 184695), (34, 184854),

Gene: BabyDotz_88 Start: 57483, Stop: 57007, Start Num: 11

Candidate Starts for BabyDotz_88:

(9, 57510), (Start: 11 @57483 has 25 MA's), (15, 57423), (16, 57417), (20, 57348), (24, 57288), (31, 57216), (32, 57171), (33, 57120), (34, 57096), (35, 57018),

Gene: Blab_87 Start: 56414, Stop: 55932, Start Num: 11

Candidate Starts for Blab_87:

(9, 56441), (Start: 11 @56414 has 25 MA's), (16, 56348), (23, 56219), (26, 56207), (28, 56186), (30, 56144), (32, 56096), (33, 56045),

Gene: Casend_91 Start: 56962, Stop: 56534, Start Num: 11

Candidate Starts for Casend_91:

(Start: 11 @56962 has 25 MA's), (15, 56902), (16, 56896), (18, 56884), (19, 56878), (22, 56803), (25, 56770), (27, 56761), (28, 56749), (30, 56707), (32, 56659),

Gene: DonaldDuck_92 Start: 56362, Stop: 55886, Start Num: 11

Candidate Starts for DonaldDuck_92:

(Start: 11 @56362 has 25 MA's), (16, 56296), (20, 56227), (24, 56167), (31, 56095), (32, 56050), (33, 55999), (34, 55975),

Gene: EverythinBagel_90 Start: 56157, Stop: 55681, Start Num: 11

Candidate Starts for EverythinBagel_90:

(Start: 11 @56157 has 25 MA's), (16, 56091), (20, 56022), (24, 55962), (31, 55890), (32, 55845), (33, 55794), (34, 55770),

Gene: Fizzles_89 Start: 56470, Stop: 56033, Start Num: 12

Candidate Starts for Fizzles_89:

(2, 56605), (Start: 12 @56470 has 2 MA's), (13, 56464), (15, 56410), (16, 56404), (23, 56281), (28, 56248), (32, 56158), (34, 56086),

Gene: FrankDeliGuy_90 Start: 56640, Stop: 56212, Start Num: 11

Candidate Starts for FrankDeliGuy_90:

(Start: 11 @56640 has 25 MA's), (15, 56580), (16, 56574), (18, 56562), (19, 56556), (22, 56481), (25, 56448), (27, 56439), (28, 56427), (30, 56385), (32, 56337),

Gene: Gazebo_89 Start: 56338, Stop: 55856, Start Num: 11

Candidate Starts for Gazebo_89:

(Start: 11 @56338 has 25 MA's), (16, 56272), (23, 56143), (26, 56131), (28, 56110), (30, 56068), (32, 56020), (33, 55969),

Gene: Grassboy_95 Start: 57263, Stop: 56781, Start Num: 11

Candidate Starts for Grassboy_95:

(Start: 11 @57263 has 25 MA's), (16, 57197), (23, 57068), (28, 57035), (30, 56993), (32, 56945), (33, 56894), (34, 56870),

Gene: Hyperion_89 Start: 56400, Stop: 55975, Start Num: 11

Candidate Starts for Hyperion_89:

(Start: 11 @56400 has 25 MA's), (15, 56340), (16, 56334), (22, 56244), (25, 56211), (30, 56148), (32, 56100),

Gene: Jehoshaphat_92 Start: 56996, Stop: 56520, Start Num: 11

Candidate Starts for Jehoshaphat_92:

(Start: 11 @56996 has 25 MA's), (16, 56930), (20, 56861), (24, 56801), (31, 56729), (32, 56684), (33, 56633), (34, 56609),

Gene: Judebell_90 Start: 56394, Stop: 55966, Start Num: 11

Candidate Starts for Judebell_90:

(Start: 11 @56394 has 25 MA's), (16, 56328), (18, 56316), (19, 56310), (22, 56235), (25, 56202), (30, 56139), (32, 56091),

Gene: Kyva_94 Start: 57287, Stop: 56805, Start Num: 11

Candidate Starts for Kyva_94:

(Start: 11 @57287 has 25 MA's), (16, 57221), (23, 57092), (28, 57059), (30, 57017), (32, 56969), (33, 56918), (34, 56894),

Gene: LeoJr_330 Start: 185111, Stop: 185665, Start Num: 7

Candidate Starts for LeoJr_330:

(7, 185111), (10, 185153), (Start: 11 @185156 has 25 MA's), (17, 185240), (21, 185324), (23, 185366), (29, 185411), (34, 185570),

Gene: LeoJr_17 Start: 7808, Stop: 8362, Start Num: 7

Candidate Starts for LeoJr_17:

(7, 7808), (10, 7850), (Start: 11 @7853 has 25 MA's), (17, 7937), (21, 8021), (23, 8063), (29, 8108), (34, 8267),

Gene: Llemily_92 Start: 56057, Stop: 55581, Start Num: 11

Candidate Starts for Llemily_92:

(Start: 11 @56057 has 25 MA's), (16, 55991), (20, 55922), (24, 55862), (31, 55790), (32, 55745), (33, 55694), (34, 55670),

Gene: Lonelysoil_88 Start: 55817, Stop: 55335, Start Num: 11

Candidate Starts for Lonelysoil_88:

(Start: 11 @55817 has 25 MA's), (15, 55757), (16, 55751), (23, 55622), (26, 55610), (28, 55589), (30, 55547), (32, 55499), (33, 55448),

Gene: Mashley_89 Start: 56489, Stop: 56007, Start Num: 11

Candidate Starts for Mashley_89:

(Start: 11 @56489 has 25 MA's), (15, 56429), (16, 56423), (23, 56294), (26, 56282), (28, 56261), (30, 56219), (32, 56171), (33, 56120),

Gene: MorillMayhem_90 Start: 56858, Stop: 56421, Start Num: 11

Candidate Starts for MorillMayhem_90:

(1, 57002), (Start: 11 @56858 has 25 MA's), (15, 56798), (16, 56792), (23, 56669), (28, 56636), (31, 56591), (33, 56495), (35, 56432),

Gene: Namago_92 Start: 56543, Stop: 56067, Start Num: 11

Candidate Starts for Namago_92:

(Start: 11 @56543 has 25 MA's), (16, 56477), (20, 56408), (24, 56348), (31, 56276), (32, 56231), (33, 56180), (34, 56156),

Gene: Nike_88 Start: 56615, Stop: 56190, Start Num: 11

Candidate Starts for Nike_88:

(9, 56642), (Start: 11 @56615 has 25 MA's), (16, 56549), (22, 56459), (25, 56426), (30, 56363), (32, 56315),

Gene: Phabia_90 Start: 56394, Stop: 55948, Start Num: 11

Candidate Starts for Phabia_90:

(Start: 11 @56394 has 25 MA's), (16, 56328), (18, 56316), (19, 56310), (23, 56196), (28, 56163), (30, 56121), (32, 56073),

Gene: Phinky_96 Start: 58273, Stop: 57830, Start Num: 12

Candidate Starts for Phinky_96:

(2, 58408), (3, 58387), (Start: 12 @58273 has 2 MA's), (16, 58207), (23, 58078), (28, 58045), (30, 58003), (32, 57955), (33, 57904),

Gene: Quammi_89 Start: 56124, Stop: 55687, Start Num: 11

Candidate Starts for Quammi_89:

(5, 56193), (6, 56169), (7, 56160), (8, 56154), (10, 56127), (Start: 11 @56124 has 25 MA's), (13, 56118), (18, 56040), (23, 55935), (28, 55902), (31, 55857), (32, 55812),

Gene: ReginaGlobina_15 Start: 7658, Stop: 8212, Start Num: 7

Candidate Starts for ReginaGlobina_15:

(4, 7598), (7, 7658), (10, 7700), (Start: 11 @7703 has 25 MA's), (14, 7727), (17, 7787), (21, 7871), (23, 7913), (29, 7958), (34, 8117),

Gene: ReginaGlobina_326 Start: 185105, Stop: 185659, Start Num: 7

Candidate Starts for ReginaGlobina_326:

(4, 185045), (7, 185105), (10, 185147), (Start: 11 @185150 has 25 MA's), (14, 185174), (17, 185234), (21, 185318), (23, 185360), (29, 185405), (34, 185564),

Gene: Rowlf_87 Start: 56210, Stop: 55728, Start Num: 11

Candidate Starts for Rowlf_87:

(Start: 11 @56210 has 25 MA's), (15, 56150), (16, 56144), (23, 56015), (28, 55982), (31, 55937), (32, 55892), (33, 55841), (34, 55817),

Gene: Rudy_88 Start: 56208, Stop: 55726, Start Num: 11

Candidate Starts for Rudy_88:

(Start: 11 @56208 has 25 MA's), (15, 56148), (16, 56142), (23, 56013), (26, 56001), (28, 55980), (30, 55938), (32, 55890), (33, 55839),

Gene: SallyK_92 Start: 57360, Stop: 56884, Start Num: 11

Candidate Starts for SallyK_92:

(Start: 11 @57360 has 25 MA's), (16, 57294), (20, 57225), (24, 57165), (31, 57093), (32, 57048), (33, 56997), (34, 56973),

Gene: Sillytadpoles_93 Start: 56045, Stop: 55569, Start Num: 11

Candidate Starts for Sillytadpoles_93:

(Start: 11 @56045 has 25 MA's), (16, 55979), (20, 55910), (24, 55850), (31, 55778), (32, 55733), (33, 55682), (34, 55658),

Gene: Squash_93 Start: 57002, Stop: 56577, Start Num: 11

Candidate Starts for Squash_93:

(1, 57146), (Start: 11 @57002 has 25 MA's), (15, 56942), (16, 56936), (22, 56846), (25, 56813), (30, 56750), (32, 56702),

Gene: Statler_95 Start: 56779, Stop: 56336, Start Num: 11

Candidate Starts for Statler_95:

(Start: 11 @56779 has 25 MA's), (15, 56719), (16, 56713), (23, 56584), (28, 56551), (30, 56509), (32, 56461),

Gene: StrawberryJamm_96 Start: 56314, Stop: 55871, Start Num: 11

Candidate Starts for StrawberryJamm_96:

(Start: 11 @56314 has 25 MA's), (16, 56248), (23, 56119), (28, 56086), (30, 56044), (32, 55996),

Gene: Teehee_91 Start: 56993, Stop: 56517, Start Num: 11

Candidate Starts for Teehee_91:

(Start: 11 @56993 has 25 MA's), (16, 56927), (20, 56858), (24, 56798), (31, 56726), (32, 56681), (33, 56630), (34, 56606),

Gene: Tissue_90 Start: 56701, Stop: 56225, Start Num: 11

Candidate Starts for Tissue_90:

(9, 56728), (Start: 11 @56701 has 25 MA's), (15, 56641), (16, 56635), (20, 56566), (24, 56506), (31, 56434), (32, 56389), (33, 56338), (34, 56314),

Gene: Viceroy_88 Start: 55945, Stop: 55508, Start Num: 11

Candidate Starts for Viceroy_88:

(5, 56014), (6, 55990), (7, 55981), (8, 55975), (10, 55948), (Start: 11 @55945 has 25 MA's), (13, 55939), (18, 55861), (23, 55756), (28, 55723), (31, 55678), (32, 55633),

Gene: Wayne3_92 Start: 56963, Stop: 56517, Start Num: 11

Candidate Starts for Wayne3_92:

(Start: 11 @56963 has 25 MA's), (16, 56897), (18, 56885), (19, 56879), (23, 56765), (28, 56732), (30, 56690), (32, 56642),

Gene: Wheelie_90 Start: 56284, Stop: 55838, Start Num: 11

Candidate Starts for Wheelie_90:

(Start: 11 @56284 has 25 MA's), (16, 56218), (18, 56206), (19, 56200), (23, 56086), (28, 56053), (30, 56011), (32, 55963),

Gene: Zagie_92 Start: 56805, Stop: 56329, Start Num: 11

Candidate Starts for Zagie_92:

(Start: 11 @56805 has 25 MA's), (16, 56739), (20, 56670), (24, 56610), (31, 56538), (32, 56493), (33, 56442), (34, 56418),

Gene: Zhafia_96 Start: 56839, Stop: 56363, Start Num: 11

Candidate Starts for Zhafia_96:

(Start: 11 @56839 has 25 MA's), (16, 56773), (20, 56704), (24, 56644), (31, 56572), (32, 56527), (33, 56476), (34, 56452),