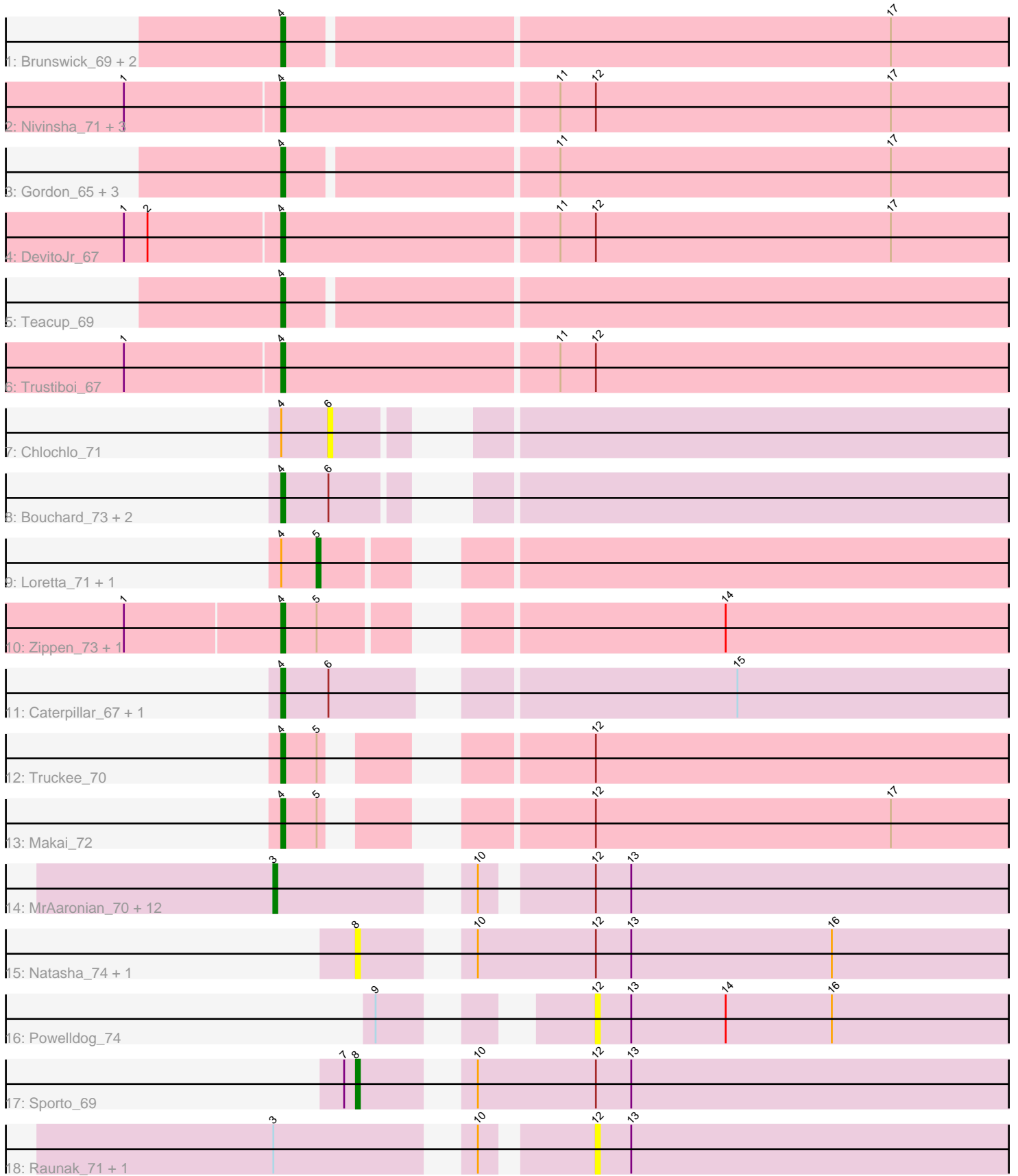


Pham 200392



Note: Tracks are now grouped by subcluster and scaled. Switching in subcluster is indicated by changes in track color. Track scale is now set by default to display the region 30 bp upstream of start 1 to 30 bp downstream of the last possible start. If this default region is judged to be packed too tightly with annotated starts, the track will be further scaled to only show that region of the ORF with annotated starts. This action will be indicated by adding "Zoomed" to the title. For starts, yellow indicates the location of called starts comprised solely of Glimmer/GeneMark auto-annotations, green indicates the location of called starts with at least 1 manual gene annotation.

Pham 200392 Report

This analysis was run 01/18/25 on database version 583.

Pham number 200392 has 45 members, 10 are drafts.

Phages represented in each track:

- Track 1 : Brunswick_69, Niktson_68, ElephantMan_68
- Track 2 : Nivinsha_71, AreFloNak_72, Nightmare_69, CastorTray_71
- Track 3 : Gordon_65, Tenno_68, CapnMurica_65, MiniBagel_67
- Track 4 : DevitoJr_67
- Track 5 : Teacup_69
- Track 6 : Trustiboi_67
- Track 7 : Chlochlo_71
- Track 8 : Bouchard_73, Phaby_73, Tokki_77
- Track 9 : Loretta_71, Ingrid_74
- Track 10 : Zippen_73, Inked_73
- Track 11 : Caterpillar_67, MediumFry_68
- Track 12 : Truckee_70
- Track 13 : Makai_72
- Track 14 : MrAaronian_70, Sloopyjoe_70, Shiba_69, Salk_70, Egad_70, Stayer_70, BronxBay_70, StarLord_70, Djungelskog_69, ProfFrink_70, Michelle_70, Linda_70, DoctorPepper_69
- Track 15 : Natasha_74, RustyBoy_74
- Track 16 : Powelldog_74
- Track 17 : Sporto_69
- Track 18 : Raunak_71, Boog_70

Summary of Final Annotations (See graph section above for start numbers):

The start number called the most often in the published annotations is 4, it was called in 19 of the 35 non-draft genes in the pham.

Genes that call this "Most Annotated" start:

- AreFloNak_72, Bouchard_73, Brunswick_69, CapnMurica_65, CastorTray_71, Caterpillar_67, DevitoJr_67, ElephantMan_68, Gordon_65, Inked_73, Makai_72, MediumFry_68, MiniBagel_67, Nightmare_69, Niktson_68, Nivinsha_71, Phaby_73, Teacup_69, Tenno_68, Tokki_77, Truckee_70, Trustiboi_67, Zippen_73,

Genes that have the "Most Annotated" start but do not call it:

- Chlochlo_71, Ingrid_74, Loretta_71,

Genes that do not have the "Most Annotated" start:

- Boog_70, BronxBay_70, Djungelskog_69, DoctorPepper_69, Egad_70, Linda_70, Michelle_70, MrAaronian_70, Natasha_74, PowellDog_74, ProfFrink_70, Raunak_71, RustyBoy_74, Salk_70, Shiba_69, Sloopyjoe_70, Sporto_69, StarLord_70, Stayer_70,

Summary by start number:

Start 3:

- Found in 15 of 45 (33.3%) of genes in pham
- Manual Annotations of this start: 13 of 35
- Called 86.7% of time when present
- Phage (with cluster) where this start called: BronxBay_70 (AW), Djungelskog_69 (AW), DoctorPepper_69 (AW), Egad_70 (AW), Linda_70 (AW), Michelle_70 (AW), MrAaronian_70 (AW), ProfFrink_70 (AW), Salk_70 (AW), Shiba_69 (AW), Sloopyjoe_70 (AW), StarLord_70 (AW), Stayer_70 (AW),

Start 4:

- Found in 26 of 45 (57.8%) of genes in pham
- Manual Annotations of this start: 19 of 35
- Called 88.5% of time when present
- Phage (with cluster) where this start called: AreFloNak_72 (AU1), Bouchard_73 (AU2), Brunswick_69 (AU1), CapnMurica_65 (AU1), CastorTray_71 (AU1), Caterpillar_67 (AU4), DevitoJr_67 (AU1), ElephantMan_68 (AU1), Gordon_65 (AU1), Inked_73 (AU), Makai_72 (AU5), MediumFry_68 (AU4), MiniBagel_67 (AU1), Nightmare_69 (AU1), Niktson_68 (AU1), Nivinsha_71 (AU1), Phaby_73 (AU2), Teacup_69 (AU1), Tenno_68 (AU1), Tokki_77 (AU2), Truckee_70 (AU5), Trustiboi_67 (AU1), Zippen_73 (AU3),

Start 5:

- Found in 6 of 45 (13.3%) of genes in pham
- Manual Annotations of this start: 2 of 35
- Called 33.3% of time when present
- Phage (with cluster) where this start called: Ingrid_74 (AU3), Loretta_71 (AU3),

Start 6:

- Found in 6 of 45 (13.3%) of genes in pham
- No Manual Annotations of this start.
- Called 16.7% of time when present
- Phage (with cluster) where this start called: Chlochlo_71 (AU2),

Start 8:

- Found in 3 of 45 (6.7%) of genes in pham
- Manual Annotations of this start: 1 of 35
- Called 100.0% of time when present
- Phage (with cluster) where this start called: Natasha_74 (AW), RustyBoy_74 (AW), Sporto_69 (AW),

Start 12:

- Found in 27 of 45 (60.0%) of genes in pham
- No Manual Annotations of this start.
- Called 11.1% of time when present

- Phage (with cluster) where this start called: Boog_70 (AW), Powelldog_74 (AW), Raunak_71 (AW),

Summary by clusters:

There are 7 clusters represented in this pham: AU1, AU3, AU2, AU5, AU4, AW, AU,

Info for manual annotations of cluster AU:

- Start number 4 was manually annotated 1 time for cluster AU.

Info for manual annotations of cluster AU1:

- Start number 4 was manually annotated 12 times for cluster AU1.

Info for manual annotations of cluster AU2:

- Start number 4 was manually annotated 2 times for cluster AU2.

Info for manual annotations of cluster AU3:

- Start number 5 was manually annotated 2 times for cluster AU3.

Info for manual annotations of cluster AU4:

- Start number 4 was manually annotated 2 times for cluster AU4.

Info for manual annotations of cluster AU5:

- Start number 4 was manually annotated 2 times for cluster AU5.

Info for manual annotations of cluster AW:

- Start number 3 was manually annotated 13 times for cluster AW.
- Start number 8 was manually annotated 1 time for cluster AW.

Gene Information:

Gene: AreFloNak_72 Start: 46382, Stop: 46585, Start Num: 4

Candidate Starts for AreFloNak_72:

(1, 46343), (Start: 4 @46382 has 19 MA's), (11, 46451), (12, 46460), (17, 46535),

Gene: Boog_70 Start: 44390, Stop: 44518, Start Num: 12

Candidate Starts for Boog_70:

(Start: 3 @44324 has 13 MA's), (10, 44366), (12, 44390), (13, 44399),

Gene: Bouchard_73 Start: 46989, Stop: 47174, Start Num: 4

Candidate Starts for Bouchard_73:

(Start: 4 @46989 has 19 MA's), (6, 47001),

Gene: BronxBay_70 Start: 44596, Stop: 44790, Start Num: 3

Candidate Starts for BronxBay_70:

(Start: 3 @44596 has 13 MA's), (10, 44638), (12, 44662), (13, 44671),

Gene: Brunswick_69 Start: 46217, Stop: 46417, Start Num: 4

Candidate Starts for Brunswick_69:

(Start: 4 @46217 has 19 MA's), (17, 46367),

Gene: CapnMurica_65 Start: 46955, Stop: 47140, Start Num: 4

Candidate Starts for CapnMurica_65:

(Start: 4 @46955 has 19 MA's), (11, 47006), (17, 47090),

Gene: CastorTray_71 Start: 46964, Stop: 47170, Start Num: 4

Candidate Starts for CastorTray_71:

(1, 46925), (Start: 4 @46964 has 19 MA's), (11, 47033), (12, 47042), (17, 47117),

Gene: Caterpillar_67 Start: 45815, Stop: 46006, Start Num: 4

Candidate Starts for Caterpillar_67:

(Start: 4 @45815 has 19 MA's), (6, 45827), (15, 45917),

Gene: Chlochlo_71 Start: 46528, Stop: 46701, Start Num: 6

Candidate Starts for Chlochlo_71:

(Start: 4 @46516 has 19 MA's), (6, 46528),

Gene: DevitoJr_67 Start: 46345, Stop: 46548, Start Num: 4

Candidate Starts for DevitoJr_67:

(1, 46306), (2, 46312), (Start: 4 @46345 has 19 MA's), (11, 46414), (12, 46423), (17, 46498),

Gene: Djungelskog_69 Start: 44598, Stop: 44792, Start Num: 3

Candidate Starts for Djungelskog_69:

(Start: 3 @44598 has 13 MA's), (10, 44640), (12, 44664), (13, 44673),

Gene: DoctorPepper_69 Start: 44300, Stop: 44494, Start Num: 3

Candidate Starts for DoctorPepper_69:

(Start: 3 @44300 has 13 MA's), (10, 44342), (12, 44366), (13, 44375),

Gene: Egad_70 Start: 44574, Stop: 44768, Start Num: 3

Candidate Starts for Egad_70:

(Start: 3 @44574 has 13 MA's), (10, 44616), (12, 44640), (13, 44649),

Gene: ElephantMan_68 Start: 46847, Stop: 47047, Start Num: 4

Candidate Starts for ElephantMan_68:

(Start: 4 @46847 has 19 MA's), (17, 46997),

Gene: Gordon_65 Start: 46838, Stop: 47038, Start Num: 4

Candidate Starts for Gordon_65:

(Start: 4 @46838 has 19 MA's), (11, 46904), (17, 46988),

Gene: Ingrid_74 Start: 46820, Stop: 46999, Start Num: 5

Candidate Starts for Ingrid_74:

(Start: 4 @46811 has 19 MA's), (Start: 5 @46820 has 2 MA's),

Gene: Inked_73 Start: 47436, Stop: 47624, Start Num: 4

Candidate Starts for Inked_73:

(1, 47397), (Start: 4 @47436 has 19 MA's), (Start: 5 @47445 has 2 MA's), (14, 47532),

Gene: Linda_70 Start: 44593, Stop: 44787, Start Num: 3

Candidate Starts for Linda_70:

(Start: 3 @44593 has 13 MA's), (10, 44635), (12, 44659), (13, 44668),

Gene: Loretta_71 Start: 46820, Stop: 46999, Start Num: 5

Candidate Starts for Loretta_71:

(Start: 4 @46811 has 19 MA's), (Start: 5 @46820 has 2 MA's),

Gene: Makai_72 Start: 46941, Stop: 47126, Start Num: 4

Candidate Starts for Makai_72:

(Start: 4 @46941 has 19 MA's), (Start: 5 @46950 has 2 MA's), (12, 46998), (17, 47073),

Gene: MediumFry_68 Start: 46153, Stop: 46344, Start Num: 4

Candidate Starts for MediumFry_68:

(Start: 4 @46153 has 19 MA's), (6, 46165), (15, 46255),

Gene: Michelle_70 Start: 44595, Stop: 44789, Start Num: 3

Candidate Starts for Michelle_70:

(Start: 3 @44595 has 13 MA's), (10, 44637), (12, 44661), (13, 44670),

Gene: MiniBagel_67 Start: 46944, Stop: 47144, Start Num: 4

Candidate Starts for MiniBagel_67:

(Start: 4 @46944 has 19 MA's), (11, 47010), (17, 47094),

Gene: MrAaronian_70 Start: 44595, Stop: 44789, Start Num: 3

Candidate Starts for MrAaronian_70:

(Start: 3 @44595 has 13 MA's), (10, 44637), (12, 44661), (13, 44670),

Gene: Natasha_74 Start: 44917, Stop: 45096, Start Num: 8

Candidate Starts for Natasha_74:

(Start: 8 @44917 has 1 MA's), (10, 44938), (12, 44968), (13, 44977), (16, 45028),

Gene: Nightmare_69 Start: 47250, Stop: 47453, Start Num: 4

Candidate Starts for Nightmare_69:

(1, 47211), (Start: 4 @47250 has 19 MA's), (11, 47319), (12, 47328), (17, 47403),

Gene: Niktson_68 Start: 46847, Stop: 47047, Start Num: 4

Candidate Starts for Niktson_68:

(Start: 4 @46847 has 19 MA's), (17, 46997),

Gene: Nivinsha_71 Start: 46382, Stop: 46585, Start Num: 4

Candidate Starts for Nivinsha_71:

(1, 46343), (Start: 4 @46382 has 19 MA's), (11, 46451), (12, 46460), (17, 46535),

Gene: Phaby_73 Start: 47173, Stop: 47358, Start Num: 4

Candidate Starts for Phaby_73:

(Start: 4 @47173 has 19 MA's), (6, 47185),

Gene: Powelldog_74 Start: 45365, Stop: 45493, Start Num: 12

Candidate Starts for Powelldog_74:

(9, 45329), (12, 45365), (13, 45374), (14, 45398), (16, 45425),

Gene: ProfFrink_70 Start: 44573, Stop: 44767, Start Num: 3

Candidate Starts for ProfFrink_70:

(Start: 3 @44573 has 13 MA's), (10, 44615), (12, 44639), (13, 44648),

Gene: Raunak_71 Start: 44301, Stop: 44429, Start Num: 12

Candidate Starts for Raunak_71:

(Start: 3 @44235 has 13 MA's), (10, 44277), (12, 44301), (13, 44310),

Gene: RustyBoy_74 Start: 45116, Stop: 45295, Start Num: 8

Candidate Starts for RustyBoy_74:

(Start: 8 @45116 has 1 MA's), (10, 45137), (12, 45167), (13, 45176), (16, 45227),

Gene: Salk_70 Start: 44593, Stop: 44787, Start Num: 3

Candidate Starts for Salk_70:

(Start: 3 @44593 has 13 MA's), (10, 44635), (12, 44659), (13, 44668),

Gene: Shiba_69 Start: 44251, Stop: 44445, Start Num: 3

Candidate Starts for Shiba_69:

(Start: 3 @44251 has 13 MA's), (10, 44293), (12, 44317), (13, 44326),

Gene: Sloopyjoe_70 Start: 44597, Stop: 44791, Start Num: 3

Candidate Starts for Sloopyjoe_70:

(Start: 3 @44597 has 13 MA's), (10, 44639), (12, 44663), (13, 44672),

Gene: Sporto_69 Start: 45691, Stop: 45870, Start Num: 8

Candidate Starts for Sporto_69:

(7, 45688), (Start: 8 @45691 has 1 MA's), (10, 45712), (12, 45742), (13, 45751),

Gene: StarLord_70 Start: 44590, Stop: 44784, Start Num: 3

Candidate Starts for StarLord_70:

(Start: 3 @44590 has 13 MA's), (10, 44632), (12, 44656), (13, 44665),

Gene: Stayer_70 Start: 44593, Stop: 44787, Start Num: 3

Candidate Starts for Stayer_70:

(Start: 3 @44593 has 13 MA's), (10, 44635), (12, 44659), (13, 44668),

Gene: Teacup_69 Start: 46890, Stop: 47090, Start Num: 4

Candidate Starts for Teacup_69:

(Start: 4 @46890 has 19 MA's),

Gene: Tenno_68 Start: 46992, Stop: 47177, Start Num: 4

Candidate Starts for Tenno_68:

(Start: 4 @46992 has 19 MA's), (11, 47043), (17, 47127),

Gene: Tokki_77 Start: 47041, Stop: 47226, Start Num: 4

Candidate Starts for Tokki_77:

(Start: 4 @47041 has 19 MA's), (6, 47053),

Gene: Truckee_70 Start: 46719, Stop: 46904, Start Num: 4

Candidate Starts for Truckee_70:

(Start: 4 @46719 has 19 MA's), (Start: 5 @46728 has 2 MA's), (12, 46776),

Gene: Trustiboi_67 Start: 46567, Stop: 46773, Start Num: 4

Candidate Starts for Trustiboi_67:

(1, 46528), (Start: 4 @46567 has 19 MA's), (11, 46636), (12, 46645),

Gene: Zippen_73 Start: 47301, Stop: 47489, Start Num: 4

Candidate Starts for Zippen_73:

(1, 47262), (Start: 4 @47301 has 19 MA's), (Start: 5 @47310 has 2 MA's), (14, 47397),

