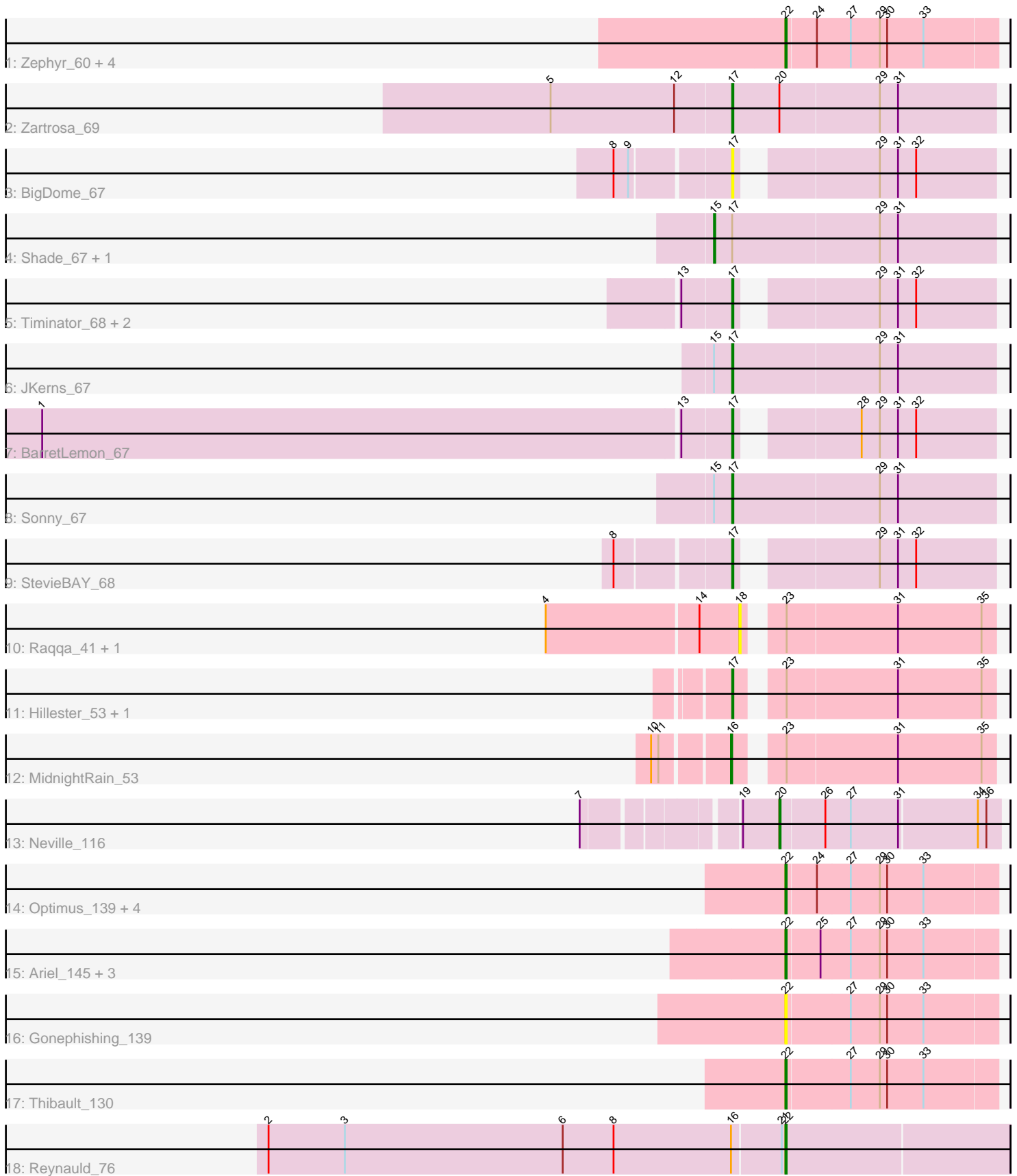


Pham 200452



Note: Tracks are now grouped by subcluster and scaled. Switching in subcluster is indicated by changes in track color. Track scale is now set by default to display the region 30 bp upstream of start 1 to 30 bp downstream of the last possible start. If this default region is judged to be packed too tightly with annotated starts, the track will be further scaled to only show that region of the ORF with annotated starts. This action will be indicated by adding "Zoomed" to the title. For starts, yellow indicates the location of called starts comprised solely of Glimmer/GeneMark auto-annotations, green indicates the location of called starts with at least 1 manual gene annotation.

Pham 200452 Report

This analysis was run 01/18/25 on database version 583.

Pham number 200452 has 34 members, 6 are drafts.

Phages represented in each track:

- Track 1 : Zephyr_60, Sibs6_61, MPlant7149_58, PinkPlastic_59, Magnito_58
- Track 2 : Zartrosa_69
- Track 3 : BigDome_67
- Track 4 : Shade_67, Jordan_68
- Track 5 : Timinator_68, LeeroyJ_68, GravityBall_67
- Track 6 : JKerns_67
- Track 7 : BarretLemon_67
- Track 8 : Sonny_67
- Track 9 : StevieBAY_68
- Track 10 : Raqqa_41, Windest_52
- Track 11 : Hillester_53, RadFad_53
- Track 12 : MidnightRain_53
- Track 13 : Neville_116
- Track 14 : Optimus_139, Bagrid_149, BAKA_148, EricMillard_140, Duke13_144
- Track 15 : Ariel_145, Courthouse_141, Hannaconda_139, Superphikiman_143
- Track 16 : Gonephishing_139
- Track 17 : Thibault_130
- Track 18 : Reynauld_76

Summary of Final Annotations (See graph section above for start numbers):

The start number called the most often in the published annotations is 22, it was called in 15 of the 28 non-draft genes in the pham.

Genes that call this "Most Annotated" start:

- Ariel_145, BAKA_148, Bagrid_149, Courthouse_141, Duke13_144, EricMillard_140, Gonephishing_139, Hannaconda_139, MPlant7149_58, Magnito_58, Optimus_139, PinkPlastic_59, Reynauld_76, Sibs6_61, Superphikiman_143, Thibault_130, Zephyr_60,

Genes that have the "Most Annotated" start but do not call it:

-

Genes that do not have the "Most Annotated" start:

- BarretLemon_67, BigDome_67, GravityBall_67, Hillester_53, JKerns_67, Jordan_68, LeeroyJ_68, MidnightRain_53, Neville_116, RadFad_53, Raqqa_41, Shade_67, Sonny_67, StevieBAY_68, Timinator_68, Windest_52, Zartrosa_69,

Summary by start number:

Start 15:

- Found in 4 of 34 (11.8%) of genes in pham
- Manual Annotations of this start: 2 of 28
- Called 50.0% of time when present
- Phage (with cluster) where this start called: Jordan_68 (AO2), Shade_67 (AO2),

Start 16:

- Found in 2 of 34 (5.9%) of genes in pham
- Manual Annotations of this start: 1 of 28
- Called 50.0% of time when present
- Phage (with cluster) where this start called: MidnightRain_53 (AY),

Start 17:

- Found in 13 of 34 (38.2%) of genes in pham
- Manual Annotations of this start: 9 of 28
- Called 84.6% of time when present
- Phage (with cluster) where this start called: BarretLemon_67 (AO2), BigDome_67 (AO2), GravityBall_67 (AO2), Hillester_53 (AY), JKerns_67 (AO2), LeeroyJ_68 (AO2), RadFad_53 (AY), Sonny_67 (AO2), StevieBAY_68 (AO2), Timinator_68 (AO2), Zartrosa_69 (AO2),

Start 18:

- Found in 2 of 34 (5.9%) of genes in pham
- No Manual Annotations of this start.
- Called 100.0% of time when present
- Phage (with cluster) where this start called: Raqqa_41 (AY), Windest_52 (AY),

Start 20:

- Found in 2 of 34 (5.9%) of genes in pham
- Manual Annotations of this start: 1 of 28
- Called 50.0% of time when present
- Phage (with cluster) where this start called: Neville_116 (DU2),

Start 22:

- Found in 17 of 34 (50.0%) of genes in pham
- Manual Annotations of this start: 15 of 28
- Called 100.0% of time when present
- Phage (with cluster) where this start called: Ariel_145 (J), BAKA_148 (J), Bagrid_149 (J), Courthouse_141 (J), Duke13_144 (J), EricMillard_140 (J), Gonephishing_139 (J), Hannaconda_139 (J), MPlant7149_58 (A1), Magnito_58 (A1), Optimus_139 (J), PinkPlastic_59 (A1), Reynauld_76 (singleton), Sibs6_61 (A1), Superphikiman_143 (J), Thibault_130 (J), Zephyr_60 (A1),

Summary by clusters:

There are 6 clusters represented in this pham: singleton, J, A1, AO2, AY, DU2,

Info for manual annotations of cluster A1:

- Start number 22 was manually annotated 5 times for cluster A1.

Info for manual annotations of cluster AO2:

- Start number 15 was manually annotated 2 times for cluster AO2.
- Start number 17 was manually annotated 8 times for cluster AO2.

Info for manual annotations of cluster AY:

- Start number 16 was manually annotated 1 time for cluster AY.
- Start number 17 was manually annotated 1 time for cluster AY.

Info for manual annotations of cluster DU2:

- Start number 20 was manually annotated 1 time for cluster DU2.

Info for manual annotations of cluster J:

- Start number 22 was manually annotated 9 times for cluster J.

Gene Information:

Gene: Ariel_145 Start: 73854, Stop: 74024, Start Num: 22

Candidate Starts for Ariel_145:

(Start: 22 @73854 has 15 MA's), (25, 73881), (27, 73905), (29, 73929), (30, 73935), (33, 73965),

Gene: BAKA_148 Start: 77184, Stop: 77354, Start Num: 22

Candidate Starts for BAKA_148:

(Start: 22 @77184 has 15 MA's), (24, 77208), (27, 77235), (29, 77259), (30, 77265), (33, 77295),

Gene: Bagrid_149 Start: 77879, Stop: 78049, Start Num: 22

Candidate Starts for Bagrid_149:

(Start: 22 @77879 has 15 MA's), (24, 77903), (27, 77930), (29, 77954), (30, 77960), (33, 77990),

Gene: BarretLemon_67 Start: 43635, Stop: 43826, Start Num: 17

Candidate Starts for BarretLemon_67:

(1, 43074), (13, 43596), (Start: 17 @43635 has 9 MA's), (28, 43716), (29, 43731), (31, 43746), (32, 43761),

Gene: BigDome_67 Start: 43919, Stop: 44110, Start Num: 17

Candidate Starts for BigDome_67:

(8, 43832), (9, 43844), (Start: 17 @43919 has 9 MA's), (29, 44015), (31, 44030), (32, 44045),

Gene: Courthouse_141 Start: 73712, Stop: 73882, Start Num: 22

Candidate Starts for Courthouse_141:

(Start: 22 @73712 has 15 MA's), (25, 73739), (27, 73763), (29, 73787), (30, 73793), (33, 73823),

Gene: Duke13_144 Start: 75469, Stop: 75639, Start Num: 22

Candidate Starts for Duke13_144:

(Start: 22 @75469 has 15 MA's), (24, 75493), (27, 75520), (29, 75544), (30, 75550), (33, 75580),

Gene: EricMillard_140 Start: 76821, Stop: 76991, Start Num: 22

Candidate Starts for EricMillard_140:

(Start: 22 @76821 has 15 MA's), (24, 76845), (27, 76872), (29, 76896), (30, 76902), (33, 76932),

Gene: Gonephishing_139 Start: 73945, Stop: 74115, Start Num: 22
Candidate Starts for Gonephishing_139:
(Start: 22 @73945 has 15 MA's), (27, 73996), (29, 74020), (30, 74026), (33, 74056),

Gene: GravityBall_67 Start: 43935, Stop: 44126, Start Num: 17
Candidate Starts for GravityBall_67:
(13, 43896), (Start: 17 @43935 has 9 MA's), (29, 44031), (31, 44046), (32, 44061),

Gene: Hannaconda_139 Start: 74461, Stop: 74631, Start Num: 22
Candidate Starts for Hannaconda_139:
(Start: 22 @74461 has 15 MA's), (25, 74488), (27, 74512), (29, 74536), (30, 74542), (33, 74572),

Gene: Hillester_53 Start: 31772, Stop: 31969, Start Num: 17
Candidate Starts for Hillester_53:
(Start: 17 @31772 has 9 MA's), (23, 31799), (31, 31889), (35, 31958),

Gene: JKerns_67 Start: 44127, Stop: 44342, Start Num: 17
Candidate Starts for JKerns_67:
(Start: 15 @44112 has 2 MA's), (Start: 17 @44127 has 9 MA's), (29, 44247), (31, 44262),

Gene: Jordan_68 Start: 44237, Stop: 44467, Start Num: 15
Candidate Starts for Jordan_68:
(Start: 15 @44237 has 2 MA's), (Start: 17 @44252 has 9 MA's), (29, 44372), (31, 44387),

Gene: LeeroyJ_68 Start: 43864, Stop: 44055, Start Num: 17
Candidate Starts for LeeroyJ_68:
(13, 43825), (Start: 17 @43864 has 9 MA's), (29, 43960), (31, 43975), (32, 43990),

Gene: MPlant7149_58 Start: 38800, Stop: 38630, Start Num: 22
Candidate Starts for MPlant7149_58:
(Start: 22 @38800 has 15 MA's), (24, 38776), (27, 38749), (29, 38725), (30, 38719), (33, 38689),

Gene: Magnito_58 Start: 39967, Stop: 39797, Start Num: 22
Candidate Starts for Magnito_58:
(Start: 22 @39967 has 15 MA's), (24, 39943), (27, 39916), (29, 39892), (30, 39886), (33, 39856),

Gene: MidnightRain_53 Start: 31954, Stop: 32151, Start Num: 16
Candidate Starts for MidnightRain_53:
(10, 31897), (11, 31903), (Start: 16 @31954 has 1 MA's), (23, 31981), (31, 32071), (35, 32140),

Gene: Neville_116 Start: 66352, Stop: 66528, Start Num: 20
Candidate Starts for Neville_116:
(7, 66211), (19, 66322), (Start: 20 @66352 has 1 MA's), (26, 66388), (27, 66409), (31, 66448), (34, 66511), (36, 66517),

Gene: Optimus_139 Start: 75143, Stop: 75313, Start Num: 22
Candidate Starts for Optimus_139:
(Start: 22 @75143 has 15 MA's), (24, 75167), (27, 75194), (29, 75218), (30, 75224), (33, 75254),

Gene: PinkPlastic_59 Start: 39832, Stop: 39662, Start Num: 22
Candidate Starts for PinkPlastic_59:
(Start: 22 @39832 has 15 MA's), (24, 39808), (27, 39781), (29, 39757), (30, 39751), (33, 39721),

Gene: RadFad_53 Start: 31772, Stop: 31969, Start Num: 17
Candidate Starts for RadFad_53:
(Start: 17 @31772 has 9 MA's), (23, 31799), (31, 31889), (35, 31958),

Gene: Raqqa_41 Start: 27644, Stop: 27835, Start Num: 18
Candidate Starts for Raqqa_41:
(4, 27488), (14, 27611), (18, 27644), (23, 27665), (31, 27755), (35, 27824),

Gene: Reynauld_76 Start: 62933, Stop: 62751, Start Num: 22
Candidate Starts for Reynauld_76:
(2, 63356), (3, 63293), (6, 63113), (8, 63071), (Start: 16 @62975 has 1 MA's), (21, 62936), (Start: 22 @62933 has 15 MA's),

Gene: Shade_67 Start: 43875, Stop: 44105, Start Num: 15
Candidate Starts for Shade_67:
(Start: 15 @43875 has 2 MA's), (Start: 17 @43890 has 9 MA's), (29, 44010), (31, 44025),

Gene: Sibs6_61 Start: 38862, Stop: 38692, Start Num: 22
Candidate Starts for Sibs6_61:
(Start: 22 @38862 has 15 MA's), (24, 38838), (27, 38811), (29, 38787), (30, 38781), (33, 38751),

Gene: Sonny_67 Start: 43813, Stop: 44028, Start Num: 17
Candidate Starts for Sonny_67:
(Start: 15 @43798 has 2 MA's), (Start: 17 @43813 has 9 MA's), (29, 43933), (31, 43948),

Gene: StevieBAY_68 Start: 44157, Stop: 44348, Start Num: 17
Candidate Starts for StevieBAY_68:
(8, 44070), (Start: 17 @44157 has 9 MA's), (29, 44253), (31, 44268), (32, 44283),

Gene: Superphikiman_143 Start: 73994, Stop: 74164, Start Num: 22
Candidate Starts for Superphikiman_143:
(Start: 22 @73994 has 15 MA's), (25, 74021), (27, 74045), (29, 74069), (30, 74075), (33, 74105),

Gene: Thibault_130 Start: 74570, Stop: 74740, Start Num: 22
Candidate Starts for Thibault_130:
(Start: 22 @74570 has 15 MA's), (27, 74621), (29, 74645), (30, 74651), (33, 74681),

Gene: Timinator_68 Start: 43977, Stop: 44168, Start Num: 17
Candidate Starts for Timinator_68:
(13, 43938), (Start: 17 @43977 has 9 MA's), (29, 44073), (31, 44088), (32, 44103),

Gene: Windest_52 Start: 29708, Stop: 29899, Start Num: 18
Candidate Starts for Windest_52:
(4, 29552), (14, 29675), (18, 29708), (23, 29729), (31, 29819), (35, 29888),

Gene: Zartrosa_69 Start: 44139, Stop: 44354, Start Num: 17
Candidate Starts for Zartrosa_69:
(5, 43992), (12, 44094), (Start: 17 @44139 has 9 MA's), (Start: 20 @44178 has 1 MA's), (29, 44259), (31, 44274),

Gene: Zephyr_60 Start: 39858, Stop: 39688, Start Num: 22
Candidate Starts for Zephyr_60:

(Start: 22 @39858 has 15 MA's), (24, 39834), (27, 39807), (29, 39783), (30, 39777), (33, 39747),