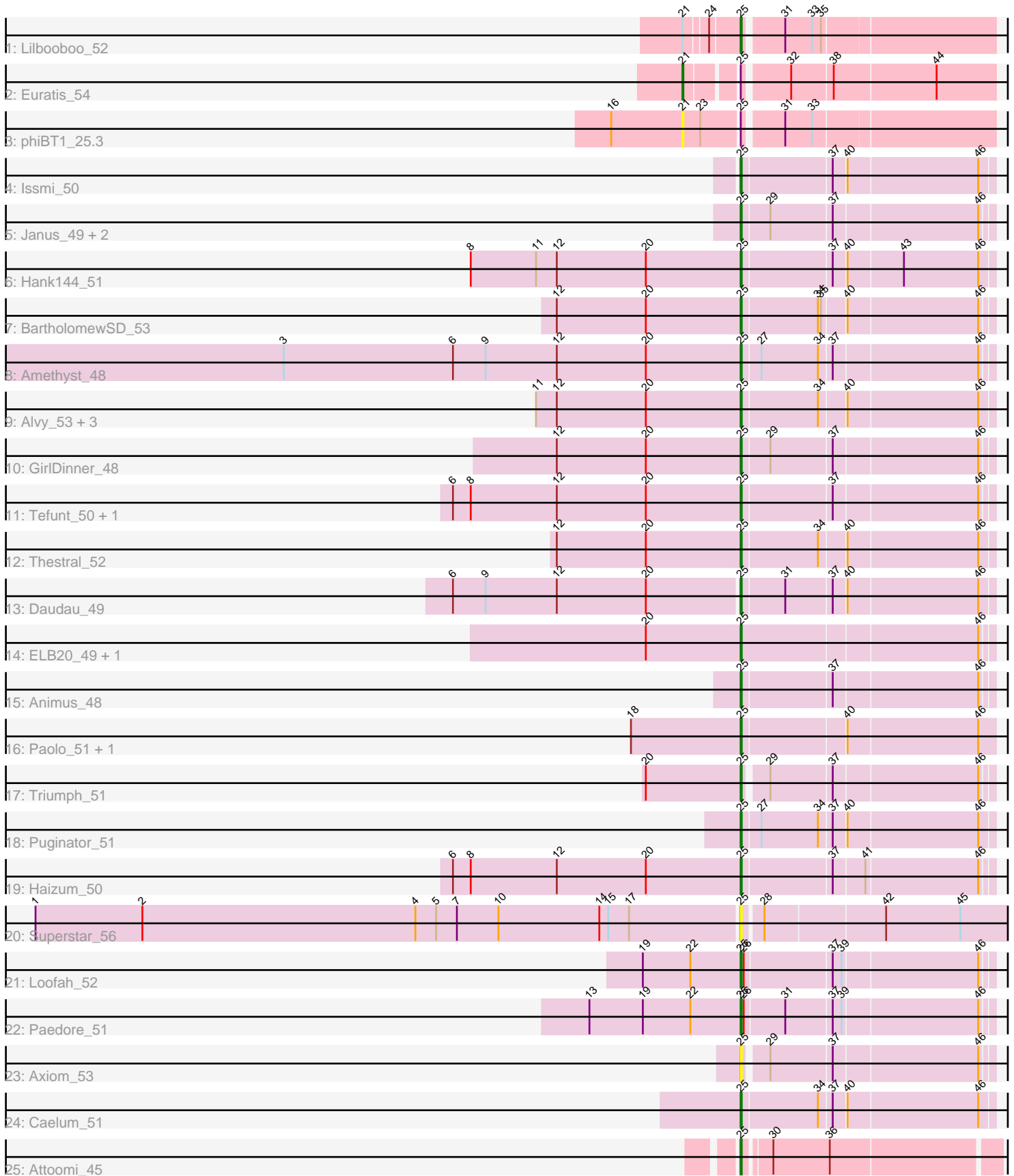


# Pham 200471



Note: Tracks are now grouped by subcluster and scaled. Switching in subcluster is indicated by changes in track color. Track scale is now set by default to display the region 30 bp upstream of start 1 to 30 bp downstream of the last possible start. If this default region is judged to be packed too tightly with annotated starts, the track will be further scaled to only show that region of the ORF with annotated starts. This action will be indicated by adding "Zoomed" to the title. For starts, yellow indicates the location of called starts comprised solely of Glimmer/GeneMark auto-annotations, green indicates the location of called starts with at least 1 manual gene annotation.

## Pham 200471 Report

This analysis was run 01/18/25 on database version 583.

Pham number 200471 has 33 members, 3 are drafts.

Phages represented in each track:

- Track 1 : Lilbooboo\_52
- Track 2 : Euratis\_54
- Track 3 : phiBT1\_25.3
- Track 4 : Issmi\_50
- Track 5 : Janus\_49, Pablito\_49, SqueakyClean\_48
- Track 6 : Hank144\_51
- Track 7 : BartholomewSD\_53
- Track 8 : Amethyst\_48
- Track 9 : Alvy\_53, Bowden\_50, TrvxScott\_49, TinaBelcher\_50
- Track 10 : GirlDinner\_48
- Track 11 : Tefunt\_50, Nishikigoi\_50
- Track 12 : Thestral\_52
- Track 13 : Daudau\_49
- Track 14 : ELB20\_49, R4\_50
- Track 15 : Animus\_48
- Track 16 : Paolo\_51, Zainub\_51
- Track 17 : Triumph\_51
- Track 18 : Puginator\_51
- Track 19 : Haizum\_50
- Track 20 : Superstar\_56
- Track 21 : Loofah\_52
- Track 22 : Paedore\_51
- Track 23 : Axiom\_53
- Track 24 : Caelum\_51
- Track 25 : Attoomi\_45

### ***Summary of Final Annotations (See graph section above for start numbers):***

The start number called the most often in the published annotations is 25, it was called in 29 of the 30 non-draft genes in the pham.

Genes that call this "Most Annotated" start:

- Alvy\_53, Amethyst\_48, Animus\_48, Attoomi\_45, Axiom\_53, BartholomewSD\_53, Bowden\_50, Caelum\_51, Daudau\_49, ELB20\_49, GirlDinner\_48, Haizum\_50,

Hank144\_51, Issmi\_50, Janus\_49, Lilbooboo\_52, Loofah\_52, Nishikigoi\_50, Pablito\_49, Paedore\_51, Paolo\_51, Puginator\_51, R4\_50, SqueakyClean\_48, Superstar\_56, Tefunt\_50, Thestral\_52, TinaBelcher\_50, Triumph\_51, TrvxScott\_49, Zainub\_51,

Genes that have the "Most Annotated" start but do not call it:

- Euratis\_54, phiBT1\_25.3,

Genes that do not have the "Most Annotated" start:

- 

### **Summary by start number:**

Start 21:

- Found in 3 of 33 ( 9.1% ) of genes in pham
- Manual Annotations of this start: 1 of 30
- Called 66.7% of time when present
- Phage (with cluster) where this start called: Euratis\_54 (BB1), phiBT1\_25.3 (BB1),

Start 25:

- Found in 33 of 33 ( 100.0% ) of genes in pham
- Manual Annotations of this start: 29 of 30
- Called 93.9% of time when present
- Phage (with cluster) where this start called: Alvy\_53 (BD2), Amethyst\_48 (BD2), Animus\_48 (BD2), Attoomi\_45 (singleton), Axiom\_53 (BD2), BartholomewSD\_53 (BD2), Bowden\_50 (BD2), Caelum\_51 (BD2), Daudau\_49 (BD2), ELB20\_49 (BD2), GirlDinner\_48 (BD2), Haizum\_50 (BD2), Hank144\_51 (BD2), Issmi\_50 (BD2), Janus\_49 (BD2), Lilbooboo\_52 (BB1), Loofah\_52 (BD2), Nishikigoi\_50 (BD2), Pablito\_49 (BD2), Paedore\_51 (BD2), Paolo\_51 (BD2), Puginator\_51 (BD2), R4\_50 (BD2), SqueakyClean\_48 (BD2), Superstar\_56 (BD2), Tefunt\_50 (BD2), Thestral\_52 (BD2), TinaBelcher\_50 (BD2), Triumph\_51 (BD2), TrvxScott\_49 (BD2), Zainub\_51 (BD2),

### **Summary by clusters:**

There are 3 clusters represented in this pham: singleton, BB1, BD2,

Info for manual annotations of cluster BB1:

- Start number 21 was manually annotated 1 time for cluster BB1.
- Start number 25 was manually annotated 1 time for cluster BB1.

Info for manual annotations of cluster BD2:

- Start number 25 was manually annotated 27 times for cluster BD2.

### **Gene Information:**

Gene: Alvy\_53 Start: 36951, Stop: 36709, Start Num: 25

Candidate Starts for Alvy\_53:

(11, 37152), (12, 37131), (20, 37041), (Start: 25 @36951 has 29 MA's), (34, 36876), (40, 36852), (46, 36723),

Gene: Amethyst\_48 Start: 35181, Stop: 34942, Start Num: 25

Candidate Starts for Amethyst\_48:

(3, 35637), (6, 35466), (9, 35433), (12, 35361), (20, 35271), (Start: 25 @35181 has 29 MA's), (27, 35163), (34, 35106), (37, 35094), (46, 34953),

Gene: Animus\_48 Start: 35500, Stop: 35261, Start Num: 25

Candidate Starts for Animus\_48:

(Start: 25 @35500 has 29 MA's), (37, 35413), (46, 35272),

Gene: Attoomi\_45 Start: 35025, Stop: 35270, Start Num: 25

Candidate Starts for Attoomi\_45:

(Start: 25 @35025 has 29 MA's), (30, 35049), (36, 35106),

Gene: Axiom\_53 Start: 35461, Stop: 35228, Start Num: 25

Candidate Starts for Axiom\_53:

(Start: 25 @35461 has 29 MA's), (29, 35440), (37, 35380), (46, 35239),

Gene: BartholomewSD\_53 Start: 36070, Stop: 35831, Start Num: 25

Candidate Starts for BartholomewSD\_53:

(12, 36250), (20, 36160), (Start: 25 @36070 has 29 MA's), (34, 35995), (35, 35992), (40, 35971), (46, 35842),

Gene: Bowden\_50 Start: 36865, Stop: 36623, Start Num: 25

Candidate Starts for Bowden\_50:

(11, 37066), (12, 37045), (20, 36955), (Start: 25 @36865 has 29 MA's), (34, 36790), (40, 36766), (46, 36637),

Gene: Caelum\_51 Start: 35396, Stop: 35154, Start Num: 25

Candidate Starts for Caelum\_51:

(Start: 25 @35396 has 29 MA's), (34, 35321), (37, 35309), (40, 35297), (46, 35168),

Gene: Daudau\_49 Start: 35343, Stop: 35101, Start Num: 25

Candidate Starts for Daudau\_49:

(6, 35628), (9, 35595), (12, 35523), (20, 35433), (Start: 25 @35343 has 29 MA's), (31, 35301), (37, 35256), (40, 35244), (46, 35115),

Gene: ELB20\_49 Start: 35943, Stop: 35701, Start Num: 25

Candidate Starts for ELB20\_49:

(20, 36033), (Start: 25 @35943 has 29 MA's), (46, 35712),

Gene: Euratis\_54 Start: 37615, Stop: 37899, Start Num: 21

Candidate Starts for Euratis\_54:

(Start: 21 @37615 has 1 MA's), (Start: 25 @37660 has 29 MA's), (32, 37702), (38, 37741), (44, 37840),

Gene: GirlDinner\_48 Start: 35001, Stop: 34762, Start Num: 25

Candidate Starts for GirlDinner\_48:

(12, 35181), (20, 35091), (Start: 25 @35001 has 29 MA's), (29, 34974), (37, 34914), (46, 34773),

Gene: Haizum\_50 Start: 35451, Stop: 35212, Start Num: 25

Candidate Starts for Haizum\_50:

(6, 35736), (8, 35718), (12, 35631), (20, 35541), (Start: 25 @35451 has 29 MA's), (37, 35364), (41, 35334), (46, 35223),

Gene: Hank144\_51 Start: 35538, Stop: 35296, Start Num: 25

Candidate Starts for Hank144\_51:

(8, 35805), (11, 35739), (12, 35718), (20, 35628), (Start: 25 @35538 has 29 MA's), (37, 35451), (40, 35439), (43, 35385), (46, 35310),

Gene: Issmi\_50 Start: 35883, Stop: 35641, Start Num: 25

Candidate Starts for Issmi\_50:

(Start: 25 @35883 has 29 MA's), (37, 35796), (40, 35784), (46, 35655),

Gene: Janus\_49 Start: 35341, Stop: 35102, Start Num: 25

Candidate Starts for Janus\_49:

(Start: 25 @35341 has 29 MA's), (29, 35314), (37, 35254), (46, 35113),

Gene: Lilbooboo\_52 Start: 37440, Stop: 37679, Start Num: 25

Candidate Starts for Lilbooboo\_52:

(Start: 21 @37395 has 1 MA's), (24, 37416), (Start: 25 @37440 has 29 MA's), (31, 37476), (33, 37503), (35, 37512),

Gene: Loofah\_52 Start: 36087, Stop: 35848, Start Num: 25

Candidate Starts for Loofah\_52:

(19, 36186), (22, 36138), (Start: 25 @36087 has 29 MA's), (26, 36084), (37, 36000), (39, 35991), (46, 35859),

Gene: Nishikigoi\_50 Start: 35451, Stop: 35212, Start Num: 25

Candidate Starts for Nishikigoi\_50:

(6, 35736), (8, 35718), (12, 35631), (20, 35541), (Start: 25 @35451 has 29 MA's), (37, 35364), (46, 35223),

Gene: Pablito\_49 Start: 35116, Stop: 34880, Start Num: 25

Candidate Starts for Pablito\_49:

(Start: 25 @35116 has 29 MA's), (29, 35089), (37, 35029), (46, 34888),

Gene: Paedore\_51 Start: 36072, Stop: 35833, Start Num: 25

Candidate Starts for Paedore\_51:

(13, 36225), (19, 36171), (22, 36123), (Start: 25 @36072 has 29 MA's), (26, 36069), (31, 36030), (37, 35985), (39, 35976), (46, 35844),

Gene: Paolo\_51 Start: 35897, Stop: 35652, Start Num: 25

Candidate Starts for Paolo\_51:

(18, 36008), (Start: 25 @35897 has 29 MA's), (40, 35798), (46, 35669),

Gene: Puginator\_51 Start: 35933, Stop: 35691, Start Num: 25

Candidate Starts for Puginator\_51:

(Start: 25 @35933 has 29 MA's), (27, 35915), (34, 35858), (37, 35846), (40, 35834), (46, 35705),

Gene: R4\_50 Start: 35959, Stop: 35717, Start Num: 25

Candidate Starts for R4\_50:

(20, 36049), (Start: 25 @35959 has 29 MA's), (46, 35728),

Gene: SqueakyClean\_48 Start: 35431, Stop: 35192, Start Num: 25

Candidate Starts for SqueakyClean\_48:

(Start: 25 @35431 has 29 MA's), (29, 35404), (37, 35344), (46, 35203),

Gene: Superstar\_56 Start: 37270, Stop: 36956, Start Num: 25

Candidate Starts for Superstar\_56:

(1, 37978), (2, 37870), (4, 37594), (5, 37573), (7, 37552), (10, 37510), (14, 37408), (15, 37399), (17, 37378), (Start: 25 @37270 has 29 MA's), (28, 37252), (42, 37135), (45, 37060),

Gene: Tefunt\_50 Start: 35453, Stop: 35214, Start Num: 25

Candidate Starts for Tefunt\_50:

(6, 35738), (8, 35720), (12, 35633), (20, 35543), (Start: 25 @35453 has 29 MA's), (37, 35366), (46, 35225),

Gene: Thestral\_52 Start: 36856, Stop: 36614, Start Num: 25

Candidate Starts for Thestral\_52:

(12, 37036), (20, 36946), (Start: 25 @36856 has 29 MA's), (34, 36781), (40, 36757), (46, 36628),

Gene: TinaBelcher\_50 Start: 36804, Stop: 36562, Start Num: 25

Candidate Starts for TinaBelcher\_50:

(11, 37005), (12, 36984), (20, 36894), (Start: 25 @36804 has 29 MA's), (34, 36729), (40, 36705), (46, 36576),

Gene: Triumph\_51 Start: 35479, Stop: 35246, Start Num: 25

Candidate Starts for Triumph\_51:

(20, 35569), (Start: 25 @35479 has 29 MA's), (29, 35458), (37, 35398), (46, 35257),

Gene: TrvxScott\_49 Start: 36850, Stop: 36608, Start Num: 25

Candidate Starts for TrvxScott\_49:

(11, 37051), (12, 37030), (20, 36940), (Start: 25 @36850 has 29 MA's), (34, 36775), (40, 36751), (46, 36622),

Gene: Zainub\_51 Start: 35872, Stop: 35630, Start Num: 25

Candidate Starts for Zainub\_51:

(18, 35983), (Start: 25 @35872 has 29 MA's), (40, 35773), (46, 35644),

Gene: phiBT1\_25.3 Start: 38224, Stop: 38517, Start Num: 21

Candidate Starts for phiBT1\_25.3:

(16, 38152), (Start: 21 @38224 has 1 MA's), (23, 38242), (Start: 25 @38278 has 29 MA's), (31, 38314), (33, 38341),