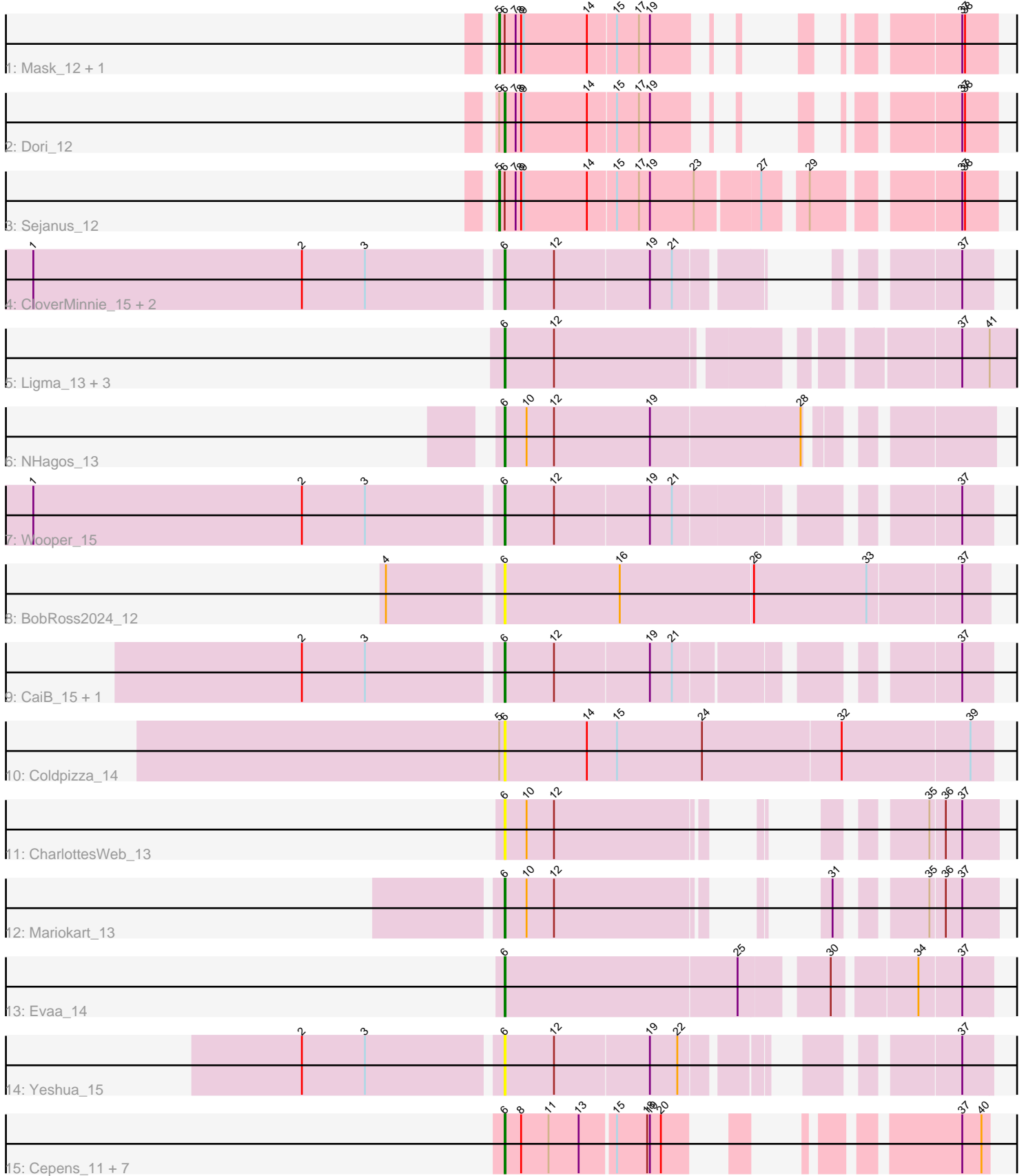


# Pham 200507



Note: Tracks are now grouped by subcluster and scaled. Switching in subcluster is indicated by changes in track color. Track scale is now set by default to display the region 30 bp upstream of start 1 to 30 bp downstream of the last possible start. If this default region is judged to be packed too tightly with annotated starts, the track will be further scaled to only show that region of the ORF with annotated starts. This action will be indicated by adding "Zoomed" to the title. For starts, yellow indicates the location of called starts comprised solely of Glimmer/GeneMark auto-annotations, green indicates the location of called starts with at least 1 manual gene annotation.

## Pham 200507 Report

This analysis was run 01/18/25 on database version 583.

Pham number 200507 has 29 members, 4 are drafts.

Phages represented in each track:

- Track 1 : Mask\_12, Mao1\_11
- Track 2 : Dori\_12
- Track 3 : Sejanus\_12
- Track 4 : CloverMinnie\_15, MossRose\_15, MakoManhole\_15
- Track 5 : Ligma\_13, Fresco\_13, Axumite\_13, Shatter\_13
- Track 6 : NHagos\_13
- Track 7 : Wooper\_15
- Track 8 : BobRoss2024\_12
- Track 9 : CaiB\_15, AnarQue\_15
- Track 10 : Coldpizza\_14
- Track 11 : CharlottesWeb\_13
- Track 12 : Mariokart\_13
- Track 13 : Evaa\_14
- Track 14 : Yeshua\_15
- Track 15 : Cepens\_11, PR\_11, D12\_11, Megabear\_11, Jeon\_11, GodPhather\_12, Argie\_12, Taptic\_11

### ***Summary of Final Annotations (See graph section above for start numbers):***

The start number called the most often in the published annotations is 6, it was called in 22 of the 25 non-draft genes in the pham.

Genes that call this "Most Annotated" start:

- AnarQue\_15, Argie\_12, Axumite\_13, BobRoss2024\_12, CaiB\_15, Cepens\_11, CharlottesWeb\_13, CloverMinnie\_15, Coldpizza\_14, D12\_11, Dori\_12, Evaa\_14, Fresco\_13, GodPhather\_12, Jeon\_11, Ligma\_13, MakoManhole\_15, Mariokart\_13, Megabear\_11, MossRose\_15, NHagos\_13, PR\_11, Shatter\_13, Taptic\_11, Wooper\_15, Yeshua\_15,

Genes that have the "Most Annotated" start but do not call it:

- Mao1\_11, Mask\_12, Sejanus\_12,

Genes that do not have the "Most Annotated" start:

-

## Summary by start number:

### Start 5:

- Found in 5 of 29 ( 17.2% ) of genes in pham
- Manual Annotations of this start: 3 of 25
- Called 60.0% of time when present
- Phage (with cluster) where this start called: Mao1\_11 (AD), Mask\_12 (AD), Sejanus\_12 (AD),

### Start 6:

- Found in 29 of 29 ( 100.0% ) of genes in pham
- Manual Annotations of this start: 22 of 25
- Called 89.7% of time when present
- Phage (with cluster) where this start called: AnarQue\_15 (DR), Argie\_12 (W), Axumite\_13 (DR), BobRoss2024\_12 (DR), CaiB\_15 (DR), Cepens\_11 (W), CharlottesWeb\_13 (DR), CloverMinnie\_15 (DR), Coldpizza\_14 (DR), D12\_11 (W), Dori\_12 (AD), E\_vaa\_14 (DR), Fresco\_13 (DR), GodPhather\_12 (W), Jeon\_11 (W), Ligma\_13 (DR), MakoManhole\_15 (DR), Mariokart\_13 (DR), Megabear\_11 (W), MossRose\_15 (DR), NHagos\_13 (DR), PR\_11 (W), Shatter\_13 (DR), Taptic\_11 (W), Wooper\_15 (DR), Yeshua\_15 (DR),

## Summary by clusters:

There are 3 clusters represented in this pham: DR, AD, W,

### Info for manual annotations of cluster AD:

- Start number 5 was manually annotated 3 times for cluster AD.
- Start number 6 was manually annotated 1 time for cluster AD.

### Info for manual annotations of cluster DR:

- Start number 6 was manually annotated 13 times for cluster DR.

### Info for manual annotations of cluster W:

- Start number 6 was manually annotated 8 times for cluster W.

## Gene Information:

Gene: AnarQue\_15 Start: 13914, Stop: 14381, Start Num: 6

Candidate Starts for AnarQue\_15:

(2, 13704), (3, 13773), (Start: 6 @13914 has 22 MA's), (12, 13968), (19, 14070), (21, 14094), (37, 14349),

Gene: Argie\_12 Start: 13780, Stop: 14178, Start Num: 6

Candidate Starts for Argie\_12:

(Start: 6 @13780 has 22 MA's), (8, 13798), (11, 13828), (13, 13861), (15, 13897), (18, 13930), (19, 13933), (20, 13945), (37, 14149), (40, 14170),

Gene: Axumite\_13 Start: 12434, Stop: 12952, Start Num: 6

Candidate Starts for Axumite\_13:

(Start: 6 @12434 has 22 MA's), (12, 12488), (37, 12869), (41, 12899),

Gene: BobRoss2024\_12 Start: 12263, Stop: 12784, Start Num: 6  
Candidate Starts for BobRoss2024\_12:  
(4, 12149), (Start: 6 @12263 has 22 MA's), (16, 12389), (26, 12533), (33, 12656), (37, 12755),

Gene: CaiB\_15 Start: 13902, Stop: 14366, Start Num: 6  
Candidate Starts for CaiB\_15:  
(2, 13692), (3, 13761), (Start: 6 @13902 has 22 MA's), (12, 13956), (19, 14058), (21, 14082), (37, 14334),

Gene: Cepens\_11 Start: 13519, Stop: 13902, Start Num: 6  
Candidate Starts for Cepens\_11:  
(Start: 6 @13519 has 22 MA's), (8, 13537), (11, 13567), (13, 13600), (15, 13636), (18, 13669), (19, 13672), (20, 13684), (37, 13873), (40, 13894),

Gene: CharlottesWeb\_13 Start: 12479, Stop: 12856, Start Num: 6  
Candidate Starts for CharlottesWeb\_13:  
(Start: 6 @12479 has 22 MA's), (10, 12503), (12, 12533), (35, 12785), (36, 12800), (37, 12818),

Gene: CloverMinnie\_15 Start: 13902, Stop: 14306, Start Num: 6  
Candidate Starts for CloverMinnie\_15:  
(1, 13398), (2, 13692), (3, 13761), (Start: 6 @13902 has 22 MA's), (12, 13956), (19, 14058), (21, 14082), (37, 14274),

Gene: Coldpizza\_14 Start: 14404, Stop: 14931, Start Num: 6  
Candidate Starts for Coldpizza\_14:  
(Start: 5 @14398 has 3 MA's), (Start: 6 @14404 has 22 MA's), (14, 14494), (15, 14527), (24, 14620), (32, 14770), (39, 14908),

Gene: D12\_11 Start: 13497, Stop: 13895, Start Num: 6  
Candidate Starts for D12\_11:  
(Start: 6 @13497 has 22 MA's), (8, 13515), (11, 13545), (13, 13578), (15, 13614), (18, 13647), (19, 13650), (20, 13662), (37, 13866), (40, 13887),

Gene: Dori\_12 Start: 11226, Stop: 11591, Start Num: 6  
Candidate Starts for Dori\_12:  
(Start: 5 @11220 has 3 MA's), (Start: 6 @11226 has 22 MA's), (7, 11238), (8, 11244), (9, 11247), (14, 11316), (15, 11346), (17, 11370), (19, 11382), (37, 11553), (38, 11556),

Gene: Evaa\_14 Start: 13757, Stop: 14248, Start Num: 6  
Candidate Starts for Evaa\_14:  
(Start: 6 @13757 has 22 MA's), (25, 14009), (30, 14090), (34, 14171), (37, 14216),

Gene: Fresco\_13 Start: 12434, Stop: 12952, Start Num: 6  
Candidate Starts for Fresco\_13:  
(Start: 6 @12434 has 22 MA's), (12, 12488), (37, 12869), (41, 12899),

Gene: GodPhather\_12 Start: 13777, Stop: 14160, Start Num: 6  
Candidate Starts for GodPhather\_12:  
(Start: 6 @13777 has 22 MA's), (8, 13795), (11, 13825), (13, 13858), (15, 13894), (18, 13927), (19, 13930), (20, 13942), (37, 14131), (40, 14152),

Gene: Jeon\_11 Start: 13507, Stop: 13902, Start Num: 6

Candidate Starts for Jeon\_11:

(Start: 6 @13507 has 22 MA's), (8, 13525), (11, 13555), (13, 13588), (15, 13624), (18, 13657), (19, 13660), (20, 13672), (37, 13873), (40, 13894),

Gene: Ligma\_13 Start: 12434, Stop: 12952, Start Num: 6

Candidate Starts for Ligma\_13:

(Start: 6 @12434 has 22 MA's), (12, 12488), (37, 12869), (41, 12899),

Gene: MakoManhole\_15 Start: 13902, Stop: 14384, Start Num: 6

Candidate Starts for MakoManhole\_15:

(1, 13398), (2, 13692), (3, 13761), (Start: 6 @13902 has 22 MA's), (12, 13956), (19, 14058), (21, 14082), (37, 14352),

Gene: Mao1\_11 Start: 11616, Stop: 11987, Start Num: 5

Candidate Starts for Mao1\_11:

(Start: 5 @11616 has 3 MA's), (Start: 6 @11622 has 22 MA's), (7, 11634), (8, 11640), (9, 11643), (14, 11712), (15, 11742), (17, 11766), (19, 11778), (37, 11949), (38, 11952),

Gene: Mariokart\_13 Start: 12478, Stop: 12855, Start Num: 6

Candidate Starts for Mariokart\_13:

(Start: 6 @12478 has 22 MA's), (10, 12502), (12, 12532), (31, 12712), (35, 12784), (36, 12799), (37, 12817),

Gene: Mask\_12 Start: 11617, Stop: 11988, Start Num: 5

Candidate Starts for Mask\_12:

(Start: 5 @11617 has 3 MA's), (Start: 6 @11623 has 22 MA's), (7, 11635), (8, 11641), (9, 11644), (14, 11713), (15, 11743), (17, 11767), (19, 11779), (37, 11950), (38, 11953),

Gene: Megabear\_11 Start: 13462, Stop: 13845, Start Num: 6

Candidate Starts for Megabear\_11:

(Start: 6 @13462 has 22 MA's), (8, 13480), (11, 13510), (13, 13543), (15, 13579), (18, 13612), (19, 13615), (20, 13627), (37, 13816), (40, 13837),

Gene: MossRose\_15 Start: 13902, Stop: 14363, Start Num: 6

Candidate Starts for MossRose\_15:

(1, 13398), (2, 13692), (3, 13761), (Start: 6 @13902 has 22 MA's), (12, 13956), (19, 14058), (21, 14082), (37, 14331),

Gene: NHagos\_13 Start: 12375, Stop: 12854, Start Num: 6

Candidate Starts for NHagos\_13:

(Start: 6 @12375 has 22 MA's), (10, 12399), (12, 12429), (19, 12534), (28, 12693),

Gene: PR\_11 Start: 13474, Stop: 13872, Start Num: 6

Candidate Starts for PR\_11:

(Start: 6 @13474 has 22 MA's), (8, 13492), (11, 13522), (13, 13555), (15, 13591), (18, 13624), (19, 13627), (20, 13639), (37, 13843), (40, 13864),

Gene: Sejanus\_12 Start: 12433, Stop: 12921, Start Num: 5

Candidate Starts for Sejanus\_12:

(Start: 5 @12433 has 3 MA's), (Start: 6 @12439 has 22 MA's), (7, 12451), (8, 12457), (9, 12460), (14, 12529), (15, 12559), (17, 12583), (19, 12595), (23, 12643), (27, 12709), (29, 12745), (37, 12883), (38, 12886),

Gene: Shatter\_13 Start: 12434, Stop: 12952, Start Num: 6  
Candidate Starts for Shatter\_13:  
(Start: 6 @12434 has 22 MA's), (12, 12488), (37, 12869), (41, 12899),

Gene: Taptic\_11 Start: 13462, Stop: 13845, Start Num: 6  
Candidate Starts for Taptic\_11:  
(Start: 6 @13462 has 22 MA's), (8, 13480), (11, 13510), (13, 13543), (15, 13579), (18, 13612), (19, 13615), (20, 13627), (37, 13816), (40, 13837),

Gene: Wooper\_15 Start: 13905, Stop: 14372, Start Num: 6  
Candidate Starts for Wooper\_15:  
(1, 13401), (2, 13695), (3, 13764), (Start: 6 @13905 has 22 MA's), (12, 13959), (19, 14061), (21, 14085), (37, 14340),

Gene: Yeshua\_15 Start: 13912, Stop: 14349, Start Num: 6  
Candidate Starts for Yeshua\_15:  
(2, 13702), (3, 13771), (Start: 6 @13912 has 22 MA's), (12, 13966), (19, 14068), (22, 14098), (37, 14317),