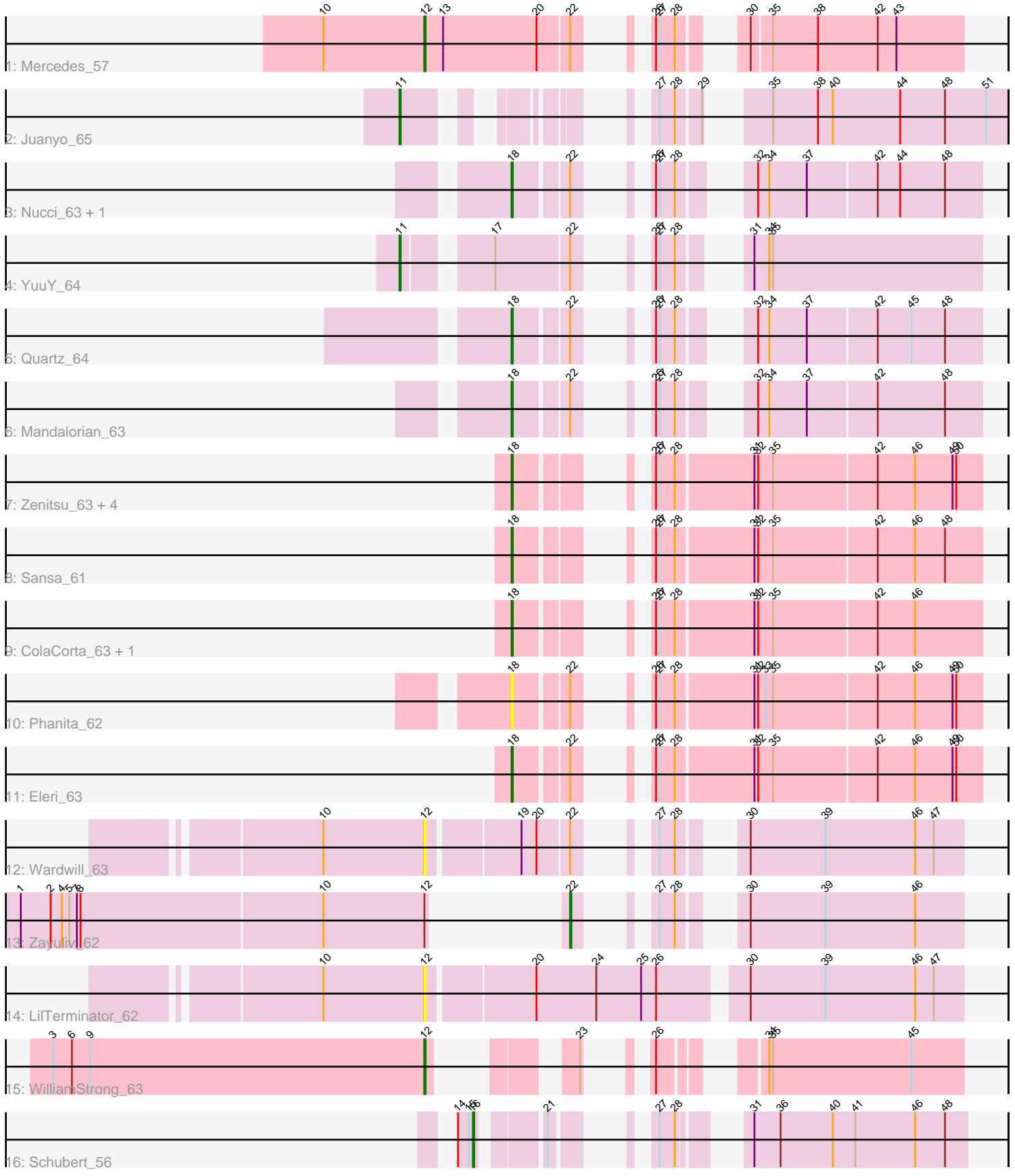


Pham 200591



Note: Tracks are now grouped by subcluster and scaled. Switching in subcluster is indicated by changes in track color. Track scale is now set by default to display the region 30 bp upstream of start 1 to 30 bp downstream of the last possible start. If this default region is judged to be packed too tightly with annotated starts, the track will be further scaled to only show that region of the ORF with annotated starts. This action will be indicated by adding "Zoomed" to the title. For starts, yellow indicates the location of called starts comprised solely of Glimmer/GeneMark auto-annotations, green indicates the location of called starts with at least 1 manual gene annotation.

Pham 200591 Report

This analysis was run 01/18/25 on database version 583.

Pham number 200591 has 22 members, 3 are drafts.

Phages represented in each track:

- Track 1 : Mercedes_57
- Track 2 : Juanyo_65
- Track 3 : Nucci_63, Carostasia_63
- Track 4 : YuuY_64
- Track 5 : Quartz_64
- Track 6 : Mandalorian_63
- Track 7 : Zenitsu_63, MCubed_63, Saratos_63, Shamu_63, Glamour_62
- Track 8 : Sansa_61
- Track 9 : ColaCorta_63, Andromedas_63
- Track 10 : Phanita_62
- Track 11 : Eleri_63
- Track 12 : Wardwill_63
- Track 13 : Zayuliv_62
- Track 14 : LilTerminator_62
- Track 15 : WilliamStrong_63
- Track 16 : Schubert_56

Summary of Final Annotations (See graph section above for start numbers):

The start number called the most often in the published annotations is 18, it was called in 13 of the 19 non-draft genes in the pham.

Genes that call this "Most Annotated" start:

- Andromedas_63, Carostasia_63, ColaCorta_63, Eleri_63, Glamour_62, MCubed_63, Mandalorian_63, Nucci_63, Phanita_62, Quartz_64, Sansa_61, Saratos_63, Shamu_63, Zenitsu_63,

Genes that have the "Most Annotated" start but do not call it:

-

Genes that do not have the "Most Annotated" start:

- Juanyo_65, LilTerminator_62, Mercedes_57, Schubert_56, Wardwill_63, WilliamStrong_63, YuuY_64, Zayuliv_62,

Summary by start number:

Start 11:

- Found in 2 of 22 (9.1%) of genes in pham
- Manual Annotations of this start: 2 of 19
- Called 100.0% of time when present
- Phage (with cluster) where this start called: Juanyo_65 (EA10), YuuY_64 (EA10),

Start 12:

- Found in 5 of 22 (22.7%) of genes in pham
- Manual Annotations of this start: 2 of 19
- Called 80.0% of time when present
- Phage (with cluster) where this start called: LilTerminator_62 (EA5), Mercedes_57 (EA), Wardwill_63 (EA5), WilliamStrong_63 (EA6),

Start 16:

- Found in 1 of 22 (4.5%) of genes in pham
- Manual Annotations of this start: 1 of 19
- Called 100.0% of time when present
- Phage (with cluster) where this start called: Schubert_56 (EA8),

Start 18:

- Found in 14 of 22 (63.6%) of genes in pham
- Manual Annotations of this start: 13 of 19
- Called 100.0% of time when present
- Phage (with cluster) where this start called: Andromedas_63 (EA2), Carostasia_63 (EA10), ColaCorta_63 (EA2), Eleri_63 (EA2), Glamour_62 (EA2), MCubed_63 (EA2), Mandalorian_63 (EA10), Nucci_63 (EA10), Phanita_62 (EA2), Quartz_64 (EA10), Sansa_61 (EA2), Saratos_63 (EA2), Shamu_63 (EA2), Zenitsu_63 (EA2),

Start 22:

- Found in 10 of 22 (45.5%) of genes in pham
- Manual Annotations of this start: 1 of 19
- Called 10.0% of time when present
- Phage (with cluster) where this start called: Zayuliv_62 (EA5),

Summary by clusters:

There are 6 clusters represented in this pham: EA10, EA, EA8, EA2, EA5, EA6,

Info for manual annotations of cluster EA:

- Start number 12 was manually annotated 1 time for cluster EA.

Info for manual annotations of cluster EA10:

- Start number 11 was manually annotated 2 times for cluster EA10.
- Start number 18 was manually annotated 4 times for cluster EA10.

Info for manual annotations of cluster EA2:

- Start number 18 was manually annotated 9 times for cluster EA2.

Info for manual annotations of cluster EA5:

- Start number 22 was manually annotated 1 time for cluster EA5.

Info for manual annotations of cluster EA6:

- Start number 12 was manually annotated 1 time for cluster EA6.

Info for manual annotations of cluster EA8:

- Start number 16 was manually annotated 1 time for cluster EA8.

Gene Information:

Gene: Andromedas_63 Start: 39976, Stop: 40287, Start Num: 18

Candidate Starts for Andromedas_63:

(Start: 18 @39976 has 13 MA's), (26, 40033), (27, 40036), (28, 40048), (31, 40108), (32, 40111), (35, 40123), (42, 40204), (46, 40234),

Gene: Carostasia_63 Start: 40023, Stop: 40301, Start Num: 18

Candidate Starts for Carostasia_63:

(Start: 18 @40023 has 13 MA's), (Start: 22 @40062 has 1 MA's), (26, 40080), (27, 40083), (28, 40095), (32, 40125), (34, 40134), (37, 40164), (42, 40218), (44, 40236), (48, 40272),

Gene: ColaCorta_63 Start: 39976, Stop: 40287, Start Num: 18

Candidate Starts for ColaCorta_63:

(Start: 18 @39976 has 13 MA's), (26, 40033), (27, 40036), (28, 40048), (31, 40108), (32, 40111), (35, 40123), (42, 40204), (46, 40234),

Gene: Eleri_63 Start: 39848, Stop: 40159, Start Num: 18

Candidate Starts for Eleri_63:

(Start: 18 @39848 has 13 MA's), (Start: 22 @39887 has 1 MA's), (26, 39905), (27, 39908), (28, 39920), (31, 39980), (32, 39983), (35, 39995), (42, 40076), (46, 40106), (49, 40136), (50, 40139),

Gene: Glamour_62 Start: 39706, Stop: 40017, Start Num: 18

Candidate Starts for Glamour_62:

(Start: 18 @39706 has 13 MA's), (26, 39763), (27, 39766), (28, 39778), (31, 39838), (32, 39841), (35, 39853), (42, 39934), (46, 39964), (49, 39994), (50, 39997),

Gene: Juanyo_65 Start: 40605, Stop: 40952, Start Num: 11

Candidate Starts for Juanyo_65:

(Start: 11 @40605 has 2 MA's), (27, 40710), (28, 40722), (29, 40740), (35, 40764), (38, 40800), (40, 40812), (44, 40866), (48, 40902), (51, 40935),

Gene: LilTerminator_62 Start: 39240, Stop: 39647, Start Num: 12

Candidate Starts for LilTerminator_62:

(10, 39159), (Start: 12 @39240 has 2 MA's), (20, 39321), (24, 39369), (25, 39405), (26, 39417), (30, 39477), (39, 39537), (46, 39609), (47, 39624),

Gene: MCubed_63 Start: 39863, Stop: 40174, Start Num: 18

Candidate Starts for MCubed_63:

(Start: 18 @39863 has 13 MA's), (26, 39920), (27, 39923), (28, 39935), (31, 39995), (32, 39998), (35, 40010), (42, 40091), (46, 40121), (49, 40151), (50, 40154),

Gene: Mandalorian_63 Start: 40034, Stop: 40312, Start Num: 18

Candidate Starts for Mandalorian_63:

(Start: 18 @40034 has 13 MA's), (Start: 22 @40073 has 1 MA's), (26, 40091), (27, 40094), (28, 40106), (32, 40136), (34, 40145), (37, 40175), (42, 40229), (48, 40283),

Gene: Mercedes_57 Start: 39485, Stop: 39826, Start Num: 12
Candidate Starts for Mercedes_57:

(10, 39404), (Start: 12 @39485 has 2 MA's), (13, 39500), (20, 39575), (Start: 22 @39599 has 1 MA's), (26, 39617), (27, 39620), (28, 39632), (30, 39659), (35, 39674), (38, 39710), (42, 39758), (43, 39773),

Gene: Nucci_63 Start: 40003, Stop: 40281, Start Num: 18
Candidate Starts for Nucci_63:

(Start: 18 @40003 has 13 MA's), (Start: 22 @40042 has 1 MA's), (26, 40060), (27, 40063), (28, 40075), (32, 40105), (34, 40114), (37, 40144), (42, 40198), (44, 40216), (48, 40252),

Gene: Phanita_62 Start: 39773, Stop: 40084, Start Num: 18
Candidate Starts for Phanita_62:

(Start: 18 @39773 has 13 MA's), (Start: 22 @39812 has 1 MA's), (26, 39830), (27, 39833), (28, 39845), (31, 39905), (32, 39908), (33, 39914), (35, 39920), (42, 40001), (46, 40031), (49, 40061), (50, 40064),

Gene: Quartz_64 Start: 40147, Stop: 40425, Start Num: 18
Candidate Starts for Quartz_64:

(Start: 18 @40147 has 13 MA's), (Start: 22 @40186 has 1 MA's), (26, 40204), (27, 40207), (28, 40219), (32, 40249), (34, 40258), (37, 40288), (42, 40342), (45, 40369), (48, 40396),

Gene: Sansa_61 Start: 39788, Stop: 40099, Start Num: 18
Candidate Starts for Sansa_61:

(Start: 18 @39788 has 13 MA's), (26, 39845), (27, 39848), (28, 39860), (31, 39920), (32, 39923), (35, 39935), (42, 40016), (46, 40046), (48, 40070),

Gene: Saratos_63 Start: 39832, Stop: 40143, Start Num: 18
Candidate Starts for Saratos_63:

(Start: 18 @39832 has 13 MA's), (26, 39889), (27, 39892), (28, 39904), (31, 39964), (32, 39967), (35, 39979), (42, 40060), (46, 40090), (49, 40120), (50, 40123),

Gene: Schubert_56 Start: 38451, Stop: 38738, Start Num: 16
Candidate Starts for Schubert_56:

(14, 38439), (15, 38448), (Start: 16 @38451 has 1 MA's), (21, 38493), (27, 38526), (28, 38538), (31, 38568), (36, 38589), (40, 38631), (41, 38649), (46, 38697), (48, 38721),

Gene: Shamu_63 Start: 39721, Stop: 40032, Start Num: 18
Candidate Starts for Shamu_63:

(Start: 18 @39721 has 13 MA's), (26, 39778), (27, 39781), (28, 39793), (31, 39853), (32, 39856), (35, 39868), (42, 39949), (46, 39979), (49, 40009), (50, 40012),

Gene: Wardwill_63 Start: 39387, Stop: 39722, Start Num: 12
Candidate Starts for Wardwill_63:

(10, 39306), (Start: 12 @39387 has 2 MA's), (19, 39456), (20, 39468), (Start: 22 @39492 has 1 MA's), (27, 39513), (28, 39525), (30, 39552), (39, 39612), (46, 39684), (47, 39699),

Gene: WilliamStrong_63 Start: 40172, Stop: 40447, Start Num: 12
Candidate Starts for WilliamStrong_63:

(3, 39875), (6, 39890), (9, 39905), (Start: 12 @40172 has 2 MA's), (23, 40229), (26, 40241), (34, 40292), (35, 40295), (45, 40406),

Gene: YuuY_64 Start: 40548, Stop: 40904, Start Num: 11

Candidate Starts for YuuY_64:

(Start: 11 @40548 has 2 MA's), (17, 40605), (Start: 22 @40662 has 1 MA's), (26, 40680), (27, 40683), (28, 40695), (31, 40722), (34, 40734), (35, 40737),

Gene: Zayuliv_62 Start: 39911, Stop: 40141, Start Num: 22

Candidate Starts for Zayuliv_62:

(1, 39584), (2, 39608), (4, 39617), (5, 39623), (7, 39629), (8, 39632), (10, 39821), (Start: 12 @39902 has 2 MA's), (Start: 22 @39911 has 1 MA's), (27, 39932), (28, 39944), (30, 39971), (39, 40031), (46, 40103),

Gene: Zenitsu_63 Start: 39868, Stop: 40179, Start Num: 18

Candidate Starts for Zenitsu_63:

(Start: 18 @39868 has 13 MA's), (26, 39925), (27, 39928), (28, 39940), (31, 40000), (32, 40003), (35, 40015), (42, 40096), (46, 40126), (49, 40156), (50, 40159),