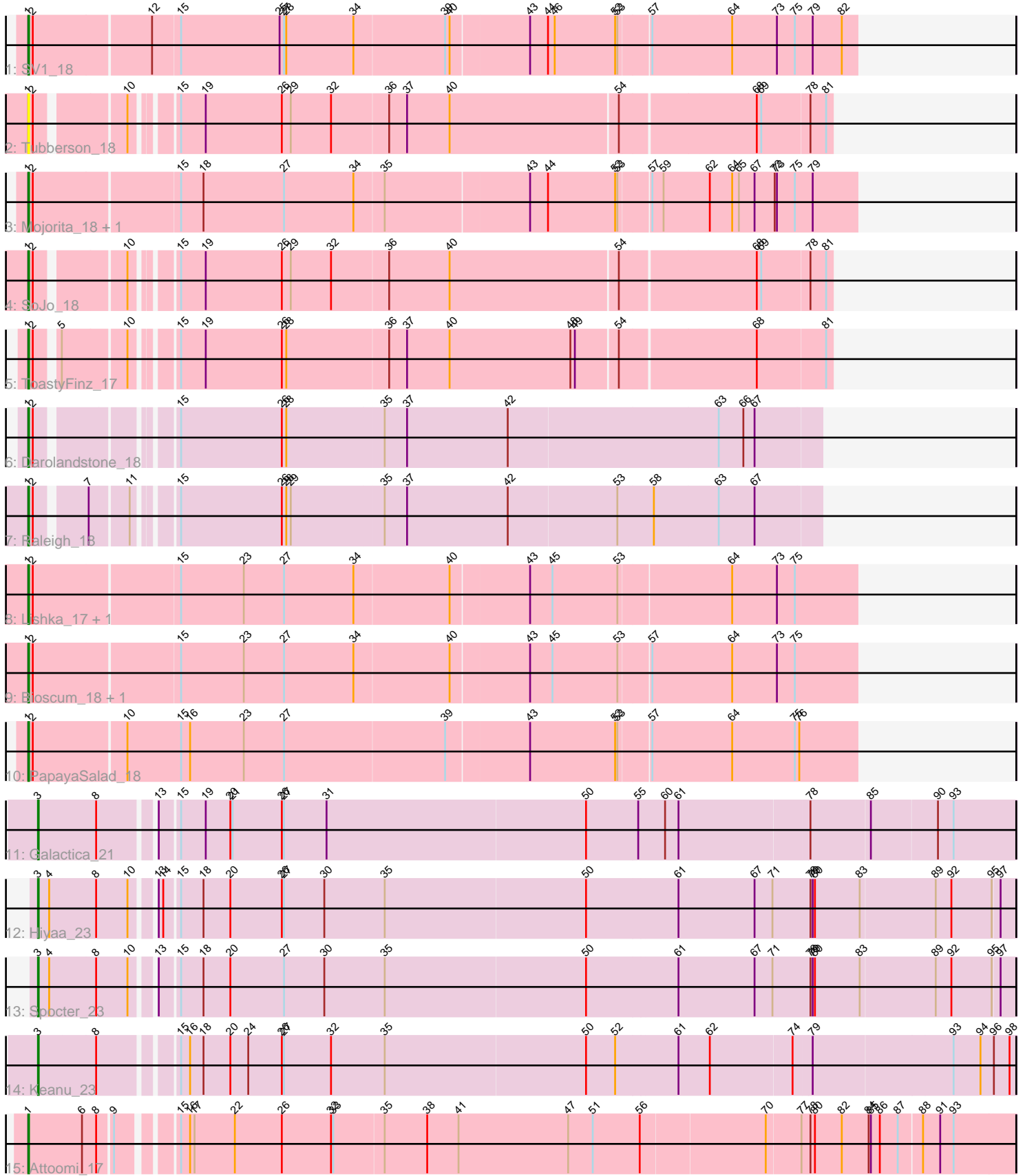


Pham 200644



Note: Tracks are now grouped by subcluster and scaled. Switching in subcluster is indicated by changes in track color. Track scale is now set by default to display the region 30 bp upstream of start 1 to 30 bp downstream of the last possible start. If this default region is judged to be packed too tightly with annotated starts, the track will be further scaled to only show that region of the ORF with annotated starts. This action will be indicated by adding "Zoomed" to the title. For starts, yellow indicates the location of called starts comprised solely of Glimmer/GeneMark auto-annotations, green indicates the location of called starts with at least 1 manual gene annotation.

Pham 200644 Report

This analysis was run 01/18/25 on database version 583.

WARNING: Pham size does not match number of genes in report. Either unphamerated genes have been added (by you) or starterator has removed genes due to invalid start codon.

Pham number 200644 has 18 members, 2 are drafts.

Phages represented in each track:

- Track 1 : SV1_18
- Track 2 : Tubberson_18
- Track 3 : Mojorita_18, Picard_18
- Track 4 : SoJo_18
- Track 5 : ToastyFinz_17
- Track 6 : Darolandstone_18
- Track 7 : Raleigh_18
- Track 8 : Lishka_17, Austintatious_18
- Track 9 : Bioscum_18, Ididsumtinwong_18
- Track 10 : PapayaSalad_18
- Track 11 : Galactica_21
- Track 12 : Hiyaa_23
- Track 13 : Spocter_23
- Track 14 : Keanu_23
- Track 15 : Attoomi_17

Summary of Final Annotations (See graph section above for start numbers):

The start number called the most often in the published annotations is 1, it was called in 12 of the 16 non-draft genes in the pham.

Genes that call this "Most Annotated" start:

- Attoomi_17, Austintatious_18, Bioscum_18, Darolandstone_18, Ididsumtinwong_18, Lishka_17, Mojorita_18, PapayaSalad_18, Picard_18, Raleigh_18, SV1_18, SoJo_18, ToastyFinz_17, Tubberson_18,

Genes that have the "Most Annotated" start but do not call it:

-

Genes that do not have the "Most Annotated" start:

- Galactica_21, Hiyaa_23, Keanu_23, Spocter_23,

Summary by start number:

Start 1:

- Found in 14 of 18 (77.8%) of genes in pham
- Manual Annotations of this start: 12 of 16
- Called 100.0% of time when present
- Phage (with cluster) where this start called: Attoomi_17 (singleton), Austintatious_18 (BC3), Bioscum_18 (BC3), Darolandstone_18 (BC2), Ididsumtinwong_18 (BC3), Lishka_17 (BC3), Mojorita_18 (BC1), PapayaSalad_18 (BC3), Picard_18 (BC1), Raleigh_18 (BC2), SV1_18 (BC1), SoJo_18 (BC1), ToastyFinz_17 (BC1), Tubberson_18 (BC1),

Start 3:

- Found in 4 of 18 (22.2%) of genes in pham
- Manual Annotations of this start: 4 of 16
- Called 100.0% of time when present
- Phage (with cluster) where this start called: Galactica_21 (BQ), Hiyaa_23 (BQ), Keanu_23 (BQ), Spocter_23 (BQ),

Summary by clusters:

There are 5 clusters represented in this pham: singleton, BC3, BQ, BC2, BC1,

Info for manual annotations of cluster BC1:

- Start number 1 was manually annotated 5 times for cluster BC1.

Info for manual annotations of cluster BC2:

- Start number 1 was manually annotated 2 times for cluster BC2.

Info for manual annotations of cluster BC3:

- Start number 1 was manually annotated 4 times for cluster BC3.

Info for manual annotations of cluster BQ:

- Start number 3 was manually annotated 4 times for cluster BQ.

Gene Information:

Gene: Attoomi_17 Start: 14186, Stop: 15451, Start Num: 1

Candidate Starts for Attoomi_17:

(Start: 1 @14186 has 12 MA's), (6, 14258), (8, 14276), (9, 14294), (15, 14357), (16, 14369), (17, 14375), (22, 14429), (26, 14492), (32, 14558), (33, 14561), (35, 14627), (38, 14684), (41, 14726), (47, 14873), (51, 14906), (56, 14969), (70, 15128), (77, 15173), (78, 15185), (80, 15191), (82, 15227), (84, 15263), (85, 15266), (86, 15278), (87, 15302), (88, 15332), (91, 15353), (93, 15371),

Gene: Austintatious_18 Start: 13110, Stop: 14192, Start Num: 1

Candidate Starts for Austintatious_18:

(Start: 1 @13110 has 12 MA's), (2, 13116), (15, 13305), (23, 13389), (27, 13443), (34, 13536), (40, 13662), (43, 13764), (45, 13794), (53, 13881), (64, 14025), (73, 14085), (75, 14109),

Gene: Bioscum_18 Start: 13146, Stop: 14228, Start Num: 1

Candidate Starts for Bioscum_18:

(Start: 1 @13146 has 12 MA's), (2, 13152), (15, 13341), (23, 13425), (27, 13479), (34, 13572), (40, 13698), (43, 13800), (45, 13830), (53, 13917), (57, 13956), (64, 14061), (73, 14121), (75, 14145),

Gene: Darolandstone_18 Start: 13797, Stop: 14798, Start Num: 1

Candidate Starts for Darolandstone_18:

(Start: 1 @13797 has 12 MA's), (2, 13803), (15, 13953), (26, 14088), (28, 14094), (35, 14223), (37, 14253), (42, 14388), (63, 14664), (66, 14697), (67, 14712),

Gene: Galactica_21 Start: 18569, Stop: 19837, Start Num: 3

Candidate Starts for Galactica_21:

(Start: 3 @18569 has 4 MA's), (8, 18644), (13, 18710), (15, 18734), (19, 18767), (20, 18800), (21, 18803), (26, 18869), (27, 18872), (31, 18929), (50, 19274), (55, 19343), (60, 19379), (61, 19397), (78, 19568), (85, 19646), (90, 19733), (93, 19754),

Gene: Hiyaa_23 Start: 19604, Stop: 20875, Start Num: 3

Candidate Starts for Hiyaa_23:

(Start: 3 @19604 has 4 MA's), (4, 19619), (8, 19679), (10, 19721), (13, 19745), (14, 19751), (15, 19769), (18, 19799), (20, 19835), (26, 19904), (27, 19907), (30, 19961), (35, 20042), (50, 20309), (61, 20429), (67, 20531), (71, 20555), (78, 20606), (79, 20609), (80, 20612), (83, 20672), (89, 20771), (92, 20792), (95, 20846), (97, 20855),

Gene: Ididsumtinwong_18 Start: 13146, Stop: 14228, Start Num: 1

Candidate Starts for Ididsumtinwong_18:

(Start: 1 @13146 has 12 MA's), (2, 13152), (15, 13341), (23, 13425), (27, 13479), (34, 13572), (40, 13698), (43, 13800), (45, 13830), (53, 13917), (57, 13956), (64, 14061), (73, 14121), (75, 14145),

Gene: Keanu_23 Start: 19646, Stop: 20911, Start Num: 3

Candidate Starts for Keanu_23:

(Start: 3 @19646 has 4 MA's), (8, 19721), (15, 19811), (16, 19823), (18, 19841), (20, 19877), (24, 19901), (26, 19946), (27, 19949), (32, 20012), (35, 20084), (50, 20351), (52, 20390), (61, 20471), (62, 20513), (74, 20621), (79, 20645), (93, 20828), (94, 20864), (96, 20882), (98, 20903),

Gene: Lishka_17 Start: 13110, Stop: 14192, Start Num: 1

Candidate Starts for Lishka_17:

(Start: 1 @13110 has 12 MA's), (2, 13116), (15, 13305), (23, 13389), (27, 13443), (34, 13536), (40, 13662), (43, 13764), (45, 13794), (53, 13881), (64, 14025), (73, 14085), (75, 14109),

Gene: Mojerita_18 Start: 13248, Stop: 14330, Start Num: 1

Candidate Starts for Mojerita_18:

(Start: 1 @13248 has 12 MA's), (2, 13254), (15, 13443), (18, 13473), (27, 13581), (34, 13674), (35, 13713), (43, 13902), (44, 13926), (52, 14016), (53, 14019), (57, 14058), (59, 14073), (62, 14133), (64, 14163), (65, 14172), (67, 14193), (72, 14220), (73, 14223), (75, 14247), (79, 14271),

Gene: PapayaSalad_18 Start: 13118, Stop: 14203, Start Num: 1

Candidate Starts for PapayaSalad_18:

(Start: 1 @13118 has 12 MA's), (2, 13124), (10, 13244), (15, 13316), (16, 13328), (23, 13400), (27, 13454), (39, 13667), (43, 13775), (52, 13889), (53, 13892), (57, 13931), (64, 14036), (75, 14120), (76, 14126),

Gene: Picard_18 Start: 13242, Stop: 14324, Start Num: 1

Candidate Starts for Picard_18:

(Start: 1 @13242 has 12 MA's), (2, 13248), (15, 13437), (18, 13467), (27, 13575), (34, 13668), (35, 13707), (43, 13896), (44, 13920), (52, 14010), (53, 14013), (57, 14052), (59, 14067), (62, 14127), (64, 14157), (65, 14166), (67, 14187), (72, 14214), (73, 14217), (75, 14241), (79, 14265),

Gene: Raleigh_18 Start: 13982, Stop: 14983, Start Num: 1

Candidate Starts for Raleigh_18:

(Start: 1 @13982 has 12 MA's), (2, 13988), (7, 14048), (11, 14096), (15, 14138), (26, 14273), (28, 14279), (29, 14285), (35, 14408), (37, 14438), (42, 14573), (53, 14717), (58, 14765), (63, 14849), (67, 14897),

Gene: SV1_18 Start: 13354, Stop: 14436, Start Num: 1

Candidate Starts for SV1_18:

(Start: 1 @13354 has 12 MA's), (2, 13360), (12, 13513), (15, 13549), (25, 13681), (27, 13687), (28, 13690), (34, 13780), (39, 13900), (40, 13906), (43, 14008), (44, 14032), (46, 14041), (52, 14122), (53, 14125), (57, 14164), (64, 14269), (73, 14329), (75, 14353), (79, 14377), (82, 14416),

Gene: SoJo_18 Start: 13632, Stop: 14639, Start Num: 1

Candidate Starts for SoJo_18:

(Start: 1 @13632 has 12 MA's), (2, 13638), (10, 13743), (15, 13788), (19, 13821), (26, 13923), (29, 13935), (32, 13989), (36, 14064), (40, 14145), (54, 14367), (68, 14541), (69, 14547), (78, 14610), (81, 14631),

Gene: Spocter_23 Start: 19592, Stop: 20863, Start Num: 3

Candidate Starts for Spocter_23:

(Start: 3 @19592 has 4 MA's), (4, 19607), (8, 19667), (10, 19709), (13, 19733), (15, 19757), (18, 19787), (20, 19823), (27, 19895), (30, 19949), (35, 20030), (50, 20297), (61, 20417), (67, 20519), (71, 20543), (78, 20594), (79, 20597), (80, 20600), (83, 20660), (89, 20759), (92, 20780), (95, 20834), (97, 20843),

Gene: ToastyFinz_17 Start: 13310, Stop: 14317, Start Num: 1

Candidate Starts for ToastyFinz_17:

(Start: 1 @13310 has 12 MA's), (2, 13316), (5, 13340), (10, 13421), (15, 13466), (19, 13499), (26, 13601), (28, 13607), (36, 13742), (37, 13766), (40, 13823), (48, 13985), (49, 13991), (54, 14045), (68, 14219), (81, 14309),

Gene: Tubberson_18 Start: 13632, Stop: 14639, Start Num: 1

Candidate Starts for Tubberson_18:

(Start: 1 @13632 has 12 MA's), (2, 13638), (10, 13743), (15, 13788), (19, 13821), (26, 13923), (29, 13935), (32, 13989), (36, 14064), (37, 14088), (40, 14145), (54, 14367), (68, 14541), (69, 14547), (78, 14610), (81, 14631),