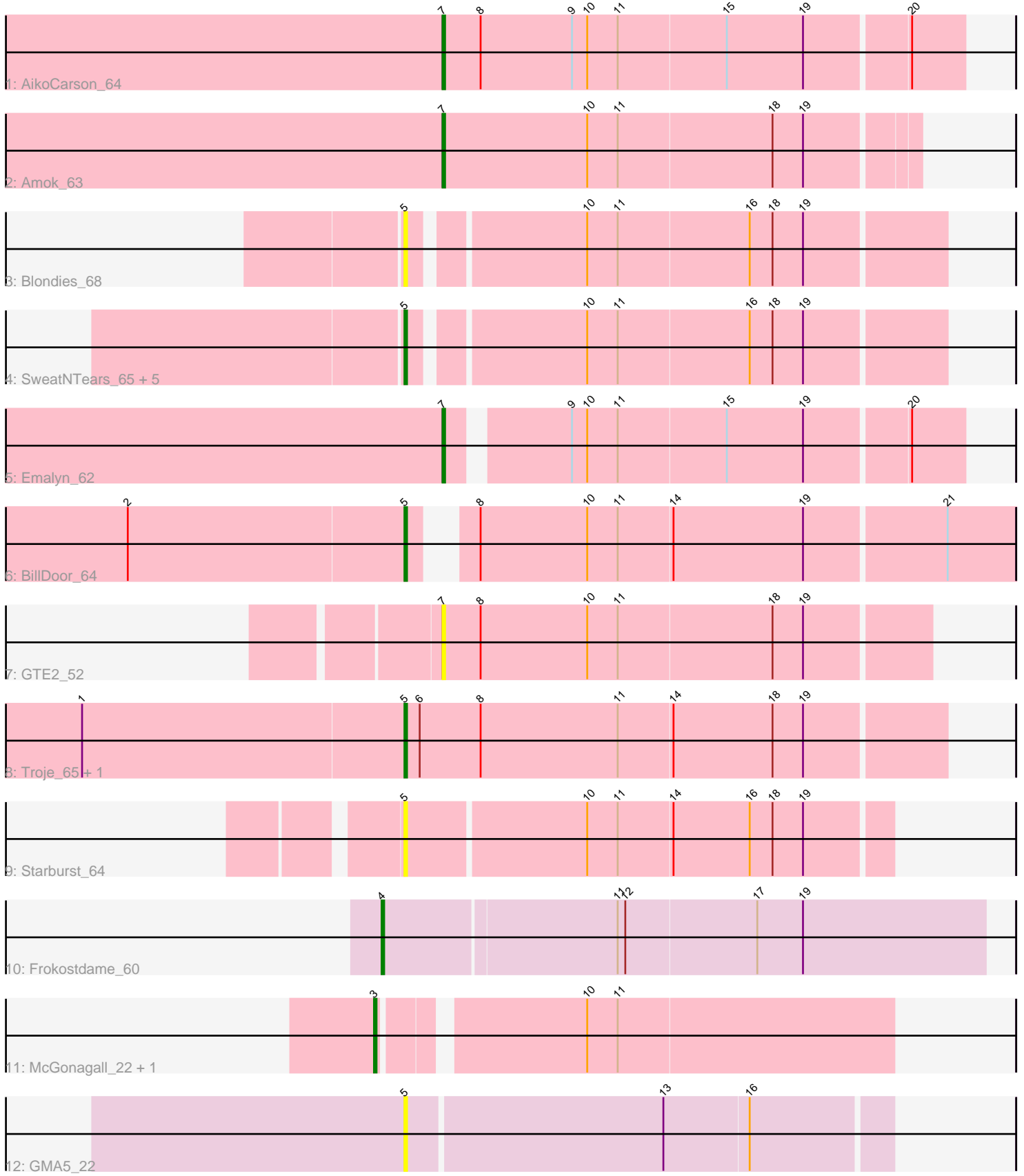


Pham 200653



Note: Tracks are now grouped by subcluster and scaled. Switching in subcluster is indicated by changes in track color. Track scale is now set by default to display the region 30 bp upstream of start 1 to 30 bp downstream of the last possible start. If this default region is judged to be packed too tightly with annotated starts, the track will be further scaled to only show that region of the ORF with annotated starts. This action will be indicated by adding "Zoomed" to the title. For starts, yellow indicates the location of called starts comprised solely of Glimmer/GeneMark auto-annotations, green indicates the location of called starts with at least 1 manual gene annotation.

Pham 200653 Report

This analysis was run 01/18/25 on database version 583.

Pham number 200653 has 19 members, 4 are drafts.

Phages represented in each track:

- Track 1 : AikoCarson_64
- Track 2 : Amok_63
- Track 3 : Blondies_68
- Track 4 : SweatNTears_65, Yummy_65, Horseradish_65, Buttrmlkdreams_65, SketchMex_63, Biskit_65
- Track 5 : Emalyn_62
- Track 6 : BillDoor_64
- Track 7 : GTE2_52
- Track 8 : Troje_65, MScarn_67
- Track 9 : Starburst_64
- Track 10 : Frokostdame_60
- Track 11 : McGonagall_22, Jeanie_22
- Track 12 : GMA5_22

Summary of Final Annotations (See graph section above for start numbers):

The start number called the most often in the published annotations is 5, it was called in 9 of the 15 non-draft genes in the pham.

Genes that call this "Most Annotated" start:

- BillDoor_64, Biskit_65, Blondies_68, Buttrmlkdreams_65, GMA5_22, Horseradish_65, MScarn_67, SketchMex_63, Starburst_64, SweatNTears_65, Troje_65, Yummy_65,

Genes that have the "Most Annotated" start but do not call it:

-

Genes that do not have the "Most Annotated" start:

- AikoCarson_64, Amok_63, Emalyn_62, Frokostdame_60, GTE2_52, Jeanie_22, McGonagall_22,

Summary by start number:

Start 3:

- Found in 2 of 19 (10.5%) of genes in pham
- Manual Annotations of this start: 2 of 15
- Called 100.0% of time when present
- Phage (with cluster) where this start called: Jeanie_22 (CW1), McGonagall_22 (CW1),

Start 4:

- Found in 1 of 19 (5.3%) of genes in pham
- Manual Annotations of this start: 1 of 15
- Called 100.0% of time when present
- Phage (with cluster) where this start called: Frokostdame_60 (CV),

Start 5:

- Found in 12 of 19 (63.2%) of genes in pham
- Manual Annotations of this start: 9 of 15
- Called 100.0% of time when present
- Phage (with cluster) where this start called: BillDoor_64 (CT), Biskit_65 (CT), Blondies_68 (CT), Buttrmlkdreams_65 (CT), GMA5_22 (CW2), Horseradish_65 (CT), MScarn_67 (CT), SketchMex_63 (CT), Starburst_64 (CT), SweatNTears_65 (CT), Troje_65 (CT), Yummy_65 (CT),

Start 7:

- Found in 4 of 19 (21.1%) of genes in pham
- Manual Annotations of this start: 3 of 15
- Called 100.0% of time when present
- Phage (with cluster) where this start called: AikoCarson_64 (CT), Amok_63 (CT), Emalyn_62 (CT), GTE2_52 (CT),

Summary by clusters:

There are 4 clusters represented in this pham: CW1, CW2, CV, CT,

Info for manual annotations of cluster CT:

- Start number 5 was manually annotated 9 times for cluster CT.
- Start number 7 was manually annotated 3 times for cluster CT.

Info for manual annotations of cluster CV:

- Start number 4 was manually annotated 1 time for cluster CV.

Info for manual annotations of cluster CW1:

- Start number 3 was manually annotated 2 times for cluster CW1.

Gene Information:

Gene: AikoCarson_64 Start: 43232, Stop: 43432, Start Num: 7

Candidate Starts for AikoCarson_64:

(Start: 7 @43232 has 3 MA's), (8, 43247), (9, 43283), (10, 43289), (11, 43301), (15, 43343), (19, 43373), (20, 43412),

Gene: Amok_63 Start: 43138, Stop: 43320, Start Num: 7

Candidate Starts for Amok_63:

(Start: 7 @43138 has 3 MA's), (10, 43195), (11, 43207), (18, 43267), (19, 43279),

Gene: BillDoor_64 Start: 42496, Stop: 42717, Start Num: 5

Candidate Starts for BillDoor_64:

(2, 42388), (Start: 5 @42496 has 9 MA's), (8, 42511), (10, 42553), (11, 42565), (14, 42586), (19, 42637), (21, 42691),

Gene: Biskit_65 Start: 43416, Stop: 43616, Start Num: 5

Candidate Starts for Biskit_65:

(Start: 5 @43416 has 9 MA's), (10, 43479), (11, 43491), (16, 43542), (18, 43551), (19, 43563),

Gene: Blondies_68 Start: 43735, Stop: 43935, Start Num: 5

Candidate Starts for Blondies_68:

(Start: 5 @43735 has 9 MA's), (10, 43798), (11, 43810), (16, 43861), (18, 43870), (19, 43882),

Gene: Buttrmlkdreams_65 Start: 43594, Stop: 43794, Start Num: 5

Candidate Starts for Buttrmlkdreams_65:

(Start: 5 @43594 has 9 MA's), (10, 43657), (11, 43669), (16, 43720), (18, 43729), (19, 43741),

Gene: Emalyn_62 Start: 41970, Stop: 42161, Start Num: 7

Candidate Starts for Emalyn_62:

(Start: 7 @41970 has 3 MA's), (9, 42012), (10, 42018), (11, 42030), (15, 42072), (19, 42102), (20, 42141),

Gene: Frokostdame_60 Start: 40539, Stop: 40772, Start Num: 4

Candidate Starts for Frokostdame_60:

(Start: 4 @40539 has 1 MA's), (11, 40629), (12, 40632), (17, 40683), (19, 40701),

Gene: GMA5_22 Start: 15142, Stop: 15327, Start Num: 5

Candidate Starts for GMA5_22:

(Start: 5 @15142 has 9 MA's), (13, 15241), (16, 15274),

Gene: GTE2_52 Start: 43208, Stop: 43396, Start Num: 7

Candidate Starts for GTE2_52:

(Start: 7 @43208 has 3 MA's), (8, 43223), (10, 43265), (11, 43277), (18, 43337), (19, 43349),

Gene: Horseradish_65 Start: 43349, Stop: 43549, Start Num: 5

Candidate Starts for Horseradish_65:

(Start: 5 @43349 has 9 MA's), (10, 43412), (11, 43424), (16, 43475), (18, 43484), (19, 43496),

Gene: Jeanie_22 Start: 14650, Stop: 14841, Start Num: 3

Candidate Starts for Jeanie_22:

(Start: 3 @14650 has 2 MA's), (10, 14722), (11, 14734),

Gene: MScarn_67 Start: 43263, Stop: 43472, Start Num: 5

Candidate Starts for MScarn_67:

(1, 43137), (Start: 5 @43263 has 9 MA's), (6, 43269), (8, 43293), (11, 43347), (14, 43368), (18, 43407), (19, 43419),

Gene: McGonagall_22 Start: 14651, Stop: 14842, Start Num: 3

Candidate Starts for McGonagall_22:

(Start: 3 @14651 has 2 MA's), (10, 14723), (11, 14735),

Gene: SketchMex_63 Start: 43416, Stop: 43616, Start Num: 5

Candidate Starts for SketchMex_63:

(Start: 5 @43416 has 9 MA's), (10, 43479), (11, 43491), (16, 43542), (18, 43551), (19, 43563),

Gene: Starburst_64 Start: 43650, Stop: 43835, Start Num: 5

Candidate Starts for Starburst_64:

(Start: 5 @43650 has 9 MA's), (10, 43719), (11, 43731), (14, 43752), (16, 43782), (18, 43791), (19, 43803),

Gene: SweatNTears_65 Start: 43520, Stop: 43720, Start Num: 5

Candidate Starts for SweatNTears_65:

(Start: 5 @43520 has 9 MA's), (10, 43583), (11, 43595), (16, 43646), (18, 43655), (19, 43667),

Gene: Troje_65 Start: 43486, Stop: 43695, Start Num: 5

Candidate Starts for Troje_65:

(1, 43360), (Start: 5 @43486 has 9 MA's), (6, 43492), (8, 43516), (11, 43570), (14, 43591), (18, 43630), (19, 43642),

Gene: Yummy_65 Start: 43463, Stop: 43663, Start Num: 5

Candidate Starts for Yummy_65:

(Start: 5 @43463 has 9 MA's), (10, 43526), (11, 43538), (16, 43589), (18, 43598), (19, 43610),