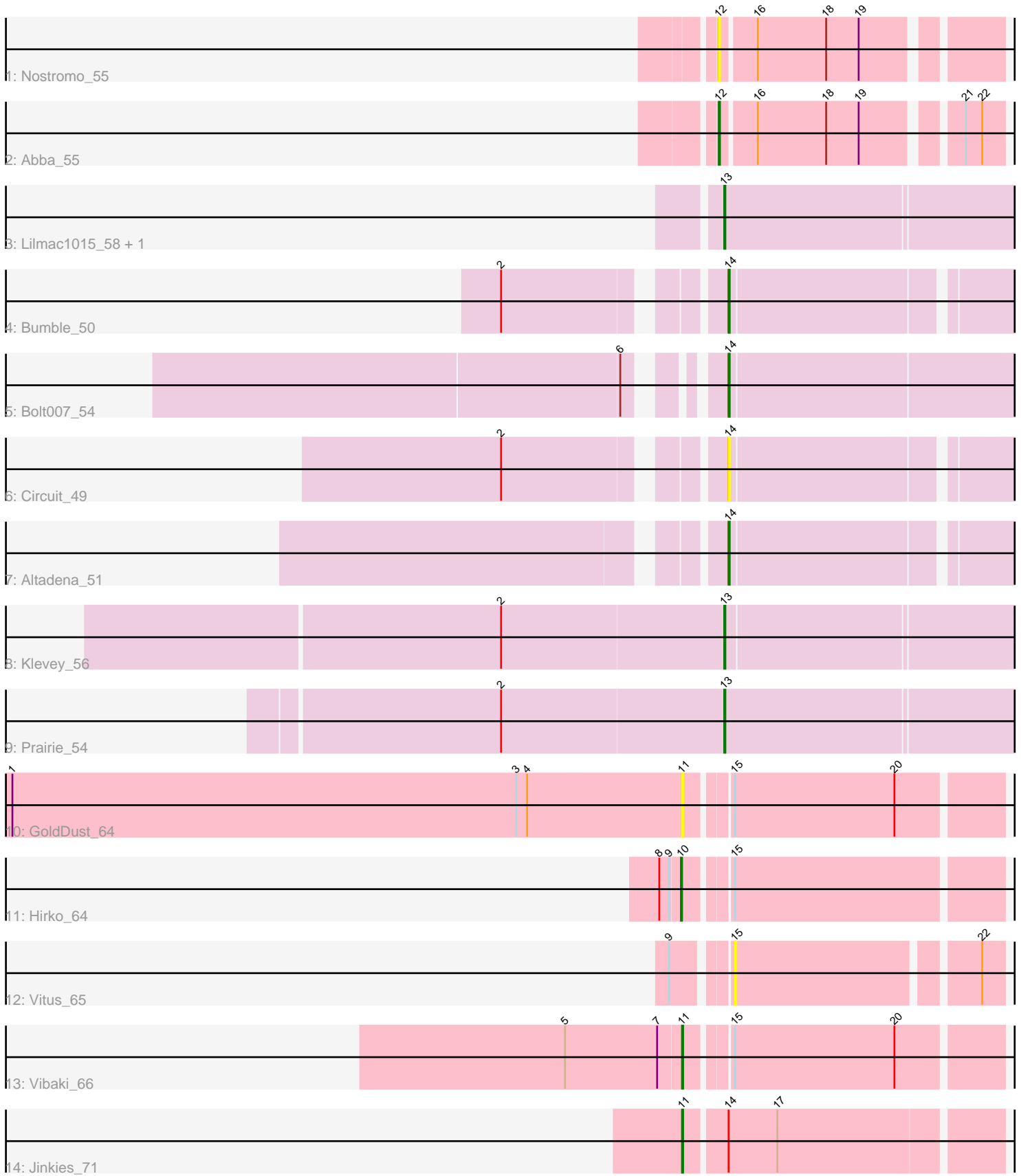


Pham 200703



Note: Tracks are now grouped by subcluster and scaled. Switching in subcluster is indicated by changes in track color. Track scale is now set by default to display the region 30 bp upstream of start 1 to 30 bp downstream of the last possible start. If this default region is judged to be packed too tightly with annotated starts, the track will be further scaled to only show that region of the ORF with annotated starts. This action will be indicated by adding "Zoomed" to the title. For starts, yellow indicates the location of called starts comprised solely of Glimmer/GeneMark auto-annotations, green indicates the location of called starts with at least 1 manual gene annotation.

Pham 200703 Report

This analysis was run 01/18/25 on database version 583.

Pham number 200703 has 15 members, 5 are drafts.

Phages represented in each track:

- Track 1 : Nostromo_55
- Track 2 : Abba_55
- Track 3 : Lilmac1015_58, CalWood4100_58
- Track 4 : Bumble_50
- Track 5 : Bolt007_54
- Track 6 : Circuit_49
- Track 7 : Altadena_51
- Track 8 : Klevey_56
- Track 9 : Prairie_54
- Track 10 : GoldDust_64
- Track 11 : Hirko_64
- Track 12 : Vitus_65
- Track 13 : Vibaki_66
- Track 14 : Jinkies_71

Summary of Final Annotations (See graph section above for start numbers):

The start number called the most often in the published annotations is 14, it was called in 3 of the 10 non-draft genes in the pham.

Genes that call this "Most Annotated" start:

- Altadena_51, Bolt007_54, Bumble_50, Circuit_49,

Genes that have the "Most Annotated" start but do not call it:

- Jinkies_71,

Genes that do not have the "Most Annotated" start:

- Abba_55, CalWood4100_58, GoldDust_64, Hirko_64, Klevey_56, Lilmac1015_58, Nostromo_55, Prairie_54, Vibaki_66, Vitus_65,

Summary by start number:

Start 10:

- Found in 1 of 15 (6.7%) of genes in pham

- Manual Annotations of this start: 1 of 10
- Called 100.0% of time when present
- Phage (with cluster) where this start called: Hirko_64 (FL),

Start 11:

- Found in 3 of 15 (20.0%) of genes in pham
- Manual Annotations of this start: 2 of 10
- Called 100.0% of time when present
- Phage (with cluster) where this start called: GoldDust_64 (FL), Jinkies_71 (FL), Vibaki_66 (FL),

Start 12:

- Found in 2 of 15 (13.3%) of genes in pham
- Manual Annotations of this start: 1 of 10
- Called 100.0% of time when present
- Phage (with cluster) where this start called: Abba_55 (AO3), Nostromo_55 (AO3),

Start 13:

- Found in 4 of 15 (26.7%) of genes in pham
- Manual Annotations of this start: 3 of 10
- Called 100.0% of time when present
- Phage (with cluster) where this start called: CalWood4100_58 (FH), Klevey_56 (FH), Lilmac1015_58 (FH), Prairie_54 (FH),

Start 14:

- Found in 5 of 15 (33.3%) of genes in pham
- Manual Annotations of this start: 3 of 10
- Called 80.0% of time when present
- Phage (with cluster) where this start called: Altadena_51 (FH), Bolt007_54 (FH), Bumble_50 (FH), Circuit_49 (FH),

Start 15:

- Found in 4 of 15 (26.7%) of genes in pham
- No Manual Annotations of this start.
- Called 25.0% of time when present
- Phage (with cluster) where this start called: Vitus_65 (FL),

Summary by clusters:

There are 3 clusters represented in this pham: FH, FL, AO3,

Info for manual annotations of cluster AO3:

- Start number 12 was manually annotated 1 time for cluster AO3.

Info for manual annotations of cluster FH:

- Start number 13 was manually annotated 3 times for cluster FH.
- Start number 14 was manually annotated 3 times for cluster FH.

Info for manual annotations of cluster FL:

- Start number 10 was manually annotated 1 time for cluster FL.
- Start number 11 was manually annotated 2 times for cluster FL.

Gene Information:

Gene: Abba_55 Start: 37377, Stop: 37613, Start Num: 12

Candidate Starts for Abba_55:

(Start: 12 @37377 has 1 MA's), (16, 37407), (18, 37470), (19, 37500), (21, 37578), (22, 37593),

Gene: Altadena_51 Start: 35364, Stop: 35657, Start Num: 14

Candidate Starts for Altadena_51:

(Start: 14 @35364 has 3 MA's),

Gene: Bolt007_54 Start: 38369, Stop: 38677, Start Num: 14

Candidate Starts for Bolt007_54:

(6, 38312), (Start: 14 @38369 has 3 MA's),

Gene: Bumble_50 Start: 36095, Stop: 36391, Start Num: 14

Candidate Starts for Bumble_50:

(2, 35921), (Start: 14 @36095 has 3 MA's),

Gene: CalWood4100_58 Start: 38403, Stop: 38720, Start Num: 13

Candidate Starts for CalWood4100_58:

(Start: 13 @38403 has 3 MA's),

Gene: Circuit_49 Start: 36728, Stop: 37021, Start Num: 14

Candidate Starts for Circuit_49:

(2, 36554), (Start: 14 @36728 has 3 MA's),

Gene: GoldDust_64 Start: 43081, Stop: 43356, Start Num: 11

Candidate Starts for GoldDust_64:

(1, 42469), (3, 42934), (4, 42943), (Start: 11 @43081 has 2 MA's), (15, 43117), (20, 43264),

Gene: Hirko_64 Start: 42841, Stop: 43116, Start Num: 10

Candidate Starts for Hirko_64:

(8, 42823), (9, 42832), (Start: 10 @42841 has 1 MA's), (15, 42877),

Gene: Jinkies_71 Start: 43799, Stop: 44077, Start Num: 11

Candidate Starts for Jinkies_71:

(Start: 11 @43799 has 2 MA's), (Start: 14 @43835 has 3 MA's), (17, 43880),

Gene: Klevey_56 Start: 37948, Stop: 38259, Start Num: 13

Candidate Starts for Klevey_56:

(2, 37744), (Start: 13 @37948 has 3 MA's),

Gene: Lilmac1015_58 Start: 38403, Stop: 38720, Start Num: 13

Candidate Starts for Lilmac1015_58:

(Start: 13 @38403 has 3 MA's),

Gene: Nostromo_55 Start: 38405, Stop: 38641, Start Num: 12

Candidate Starts for Nostromo_55:

(Start: 12 @38405 has 1 MA's), (16, 38435), (18, 38498), (19, 38528),

Gene: Prairie_54 Start: 37307, Stop: 37621, Start Num: 13

Candidate Starts for Prairie_54:

(2, 37103), (Start: 13 @37307 has 3 MA's),

Gene: Vibaki_66 Start: 42903, Stop: 43178, Start Num: 11

Candidate Starts for Vibaki_66:

(5, 42798), (7, 42882), (Start: 11 @42903 has 2 MA's), (15, 42939), (20, 43086),

Gene: Vitus_65 Start: 42301, Stop: 42531, Start Num: 15

Candidate Starts for Vitus_65:

(9, 42256), (15, 42301), (22, 42511),