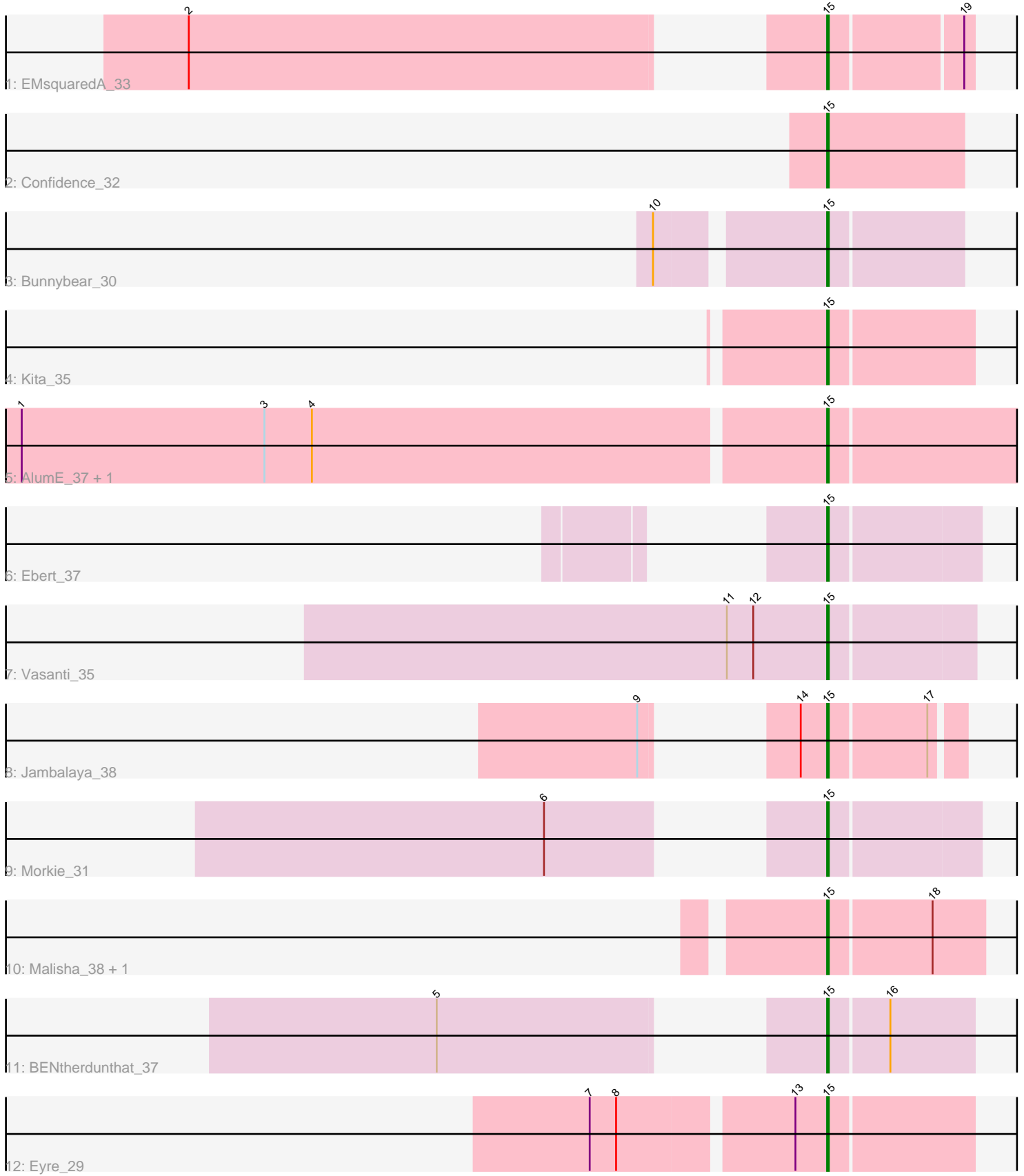


Pham 200736



Note: Tracks are now grouped by subcluster and scaled. Switching in subcluster is indicated by changes in track color. Track scale is now set by default to display the region 30 bp upstream of start 1 to 30 bp downstream of the last possible start. If this default region is judged to be packed too tightly with annotated starts, the track will be further scaled to only show that region of the ORF with annotated starts. This action will be indicated by adding "Zoomed" to the title. For starts, yellow indicates the location of called starts comprised solely of Glimmer/GeneMark auto-annotations, green indicates the location of called starts with at least 1 manual gene annotation.

Pham 200736 Report

This analysis was run 01/18/25 on database version 583.

Pham number 200736 has 14 members, 0 are drafts.

Phages represented in each track:

- Track 1 : EMsquaredA_33
- Track 2 : Confidence_32
- Track 3 : Bunnybear_30
- Track 4 : Kita_35
- Track 5 : AlumE_37, BoyNamedSue_37
- Track 6 : Ebert_37
- Track 7 : Vasanti_35
- Track 8 : Jambalaya_38
- Track 9 : Morkie_31
- Track 10 : Malisha_38, Spooky_37
- Track 11 : BENtherdunthat_37
- Track 12 : Eyre_29

Summary of Final Annotations (See graph section above for start numbers):

The start number called the most often in the published annotations is 15, it was called in 14 of the 14 non-draft genes in the pham.

Genes that call this "Most Annotated" start:

- AlumE_37, BENtherdunthat_37, BoyNamedSue_37, Bunnybear_30, Confidence_32, EMsquaredA_33, Ebert_37, Eyre_29, Jambalaya_38, Kita_35, Malisha_38, Morkie_31, Spooky_37, Vasanti_35,

Genes that have the "Most Annotated" start but do not call it:

-

Genes that do not have the "Most Annotated" start:

-

Summary by start number:

Start 15:

- Found in 14 of 14 (100.0%) of genes in pham
- Manual Annotations of this start: 14 of 14

- Called 100.0% of time when present
- Phage (with cluster) where this start called: AlumE_37 (CZ1), BENtherdunthat_37 (DN1), BoyNamedSue_37 (CZ1), Bunnybear_30 (CZ), Confidence_32 (CY1), EMSquaredA_33 (CY1), Ebert_37 (CZ2), Eyre_29 (singleton), Jambalaya_38 (DC1), Kita_35 (CZ1), Malisha_38 (DN), Morkie_31 (DH), Spooky_37 (DN2), Vasanti_35 (CZ2),

Summary by clusters:

There are 10 clusters represented in this pham: DN, singleton, DH, CZ2, CZ1, CY1, CZ, DN1, DN2, DC1,

Info for manual annotations of cluster CY1:

- Start number 15 was manually annotated 2 times for cluster CY1.

Info for manual annotations of cluster CZ:

- Start number 15 was manually annotated 1 time for cluster CZ.

Info for manual annotations of cluster CZ1:

- Start number 15 was manually annotated 3 times for cluster CZ1.

Info for manual annotations of cluster CZ2:

- Start number 15 was manually annotated 2 times for cluster CZ2.

Info for manual annotations of cluster DC1:

- Start number 15 was manually annotated 1 time for cluster DC1.

Info for manual annotations of cluster DH:

- Start number 15 was manually annotated 1 time for cluster DH.

Info for manual annotations of cluster DN:

- Start number 15 was manually annotated 1 time for cluster DN.

Info for manual annotations of cluster DN1:

- Start number 15 was manually annotated 1 time for cluster DN1.

Info for manual annotations of cluster DN2:

- Start number 15 was manually annotated 1 time for cluster DN2.

Gene Information:

Gene: AlumE_37 Start: 30336, Stop: 30443, Start Num: 15

Candidate Starts for AlumE_37:

(1, 29886), (3, 30024), (4, 30051), (Start: 15 @30336 has 14 MA's),

Gene: BENtherdunthat_37 Start: 28409, Stop: 28489, Start Num: 15

Candidate Starts for BENtherdunthat_37:

(5, 28253), (Start: 15 @28409 has 14 MA's), (16, 28442),

Gene: BoyNamedSue_37 Start: 30336, Stop: 30443, Start Num: 15

Candidate Starts for BoyNamedSue_37:

(1, 29886), (3, 30024), (4, 30051), (Start: 15 @30336 has 14 MA's),

Gene: Bunnybear_30 Start: 27670, Stop: 27744, Start Num: 15
Candidate Starts for Bunnybear_30:
(10, 27583), (Start: 15 @27670 has 14 MA's),

Gene: Confidence_32 Start: 27302, Stop: 27379, Start Num: 15
Candidate Starts for Confidence_32:
(Start: 15 @27302 has 14 MA's),

Gene: EMSquaredA_33 Start: 27066, Stop: 27143, Start Num: 15
Candidate Starts for EMSquaredA_33:
(2, 26769), (Start: 15 @27066 has 14 MA's), (19, 27138),

Gene: Ebert_37 Start: 26814, Stop: 26897, Start Num: 15
Candidate Starts for Ebert_37:
(Start: 15 @26814 has 14 MA's),

Gene: Eyre_29 Start: 24447, Stop: 24527, Start Num: 15
Candidate Starts for Eyre_29:
(7, 24321), (8, 24336), (13, 24429), (Start: 15 @24447 has 14 MA's),

Gene: Jambalaya_38 Start: 33394, Stop: 33465, Start Num: 15
Candidate Starts for Jambalaya_38:
(9, 33352), (14, 33379), (Start: 15 @33394 has 14 MA's), (17, 33448),

Gene: Kita_35 Start: 29024, Stop: 29104, Start Num: 15
Candidate Starts for Kita_35:
(Start: 15 @29024 has 14 MA's),

Gene: Malisha_38 Start: 29395, Stop: 29481, Start Num: 15
Candidate Starts for Malisha_38:
(Start: 15 @29395 has 14 MA's), (18, 29452),

Gene: Morkie_31 Start: 25259, Stop: 25342, Start Num: 15
Candidate Starts for Morkie_31:
(6, 25163), (Start: 15 @25259 has 14 MA's),

Gene: Spooky_37 Start: 29041, Stop: 29127, Start Num: 15
Candidate Starts for Spooky_37:
(Start: 15 @29041 has 14 MA's), (18, 29098),

Gene: Vasanti_35 Start: 26978, Stop: 27058, Start Num: 15
Candidate Starts for Vasanti_35:
(11, 26921), (12, 26936), (Start: 15 @26978 has 14 MA's),