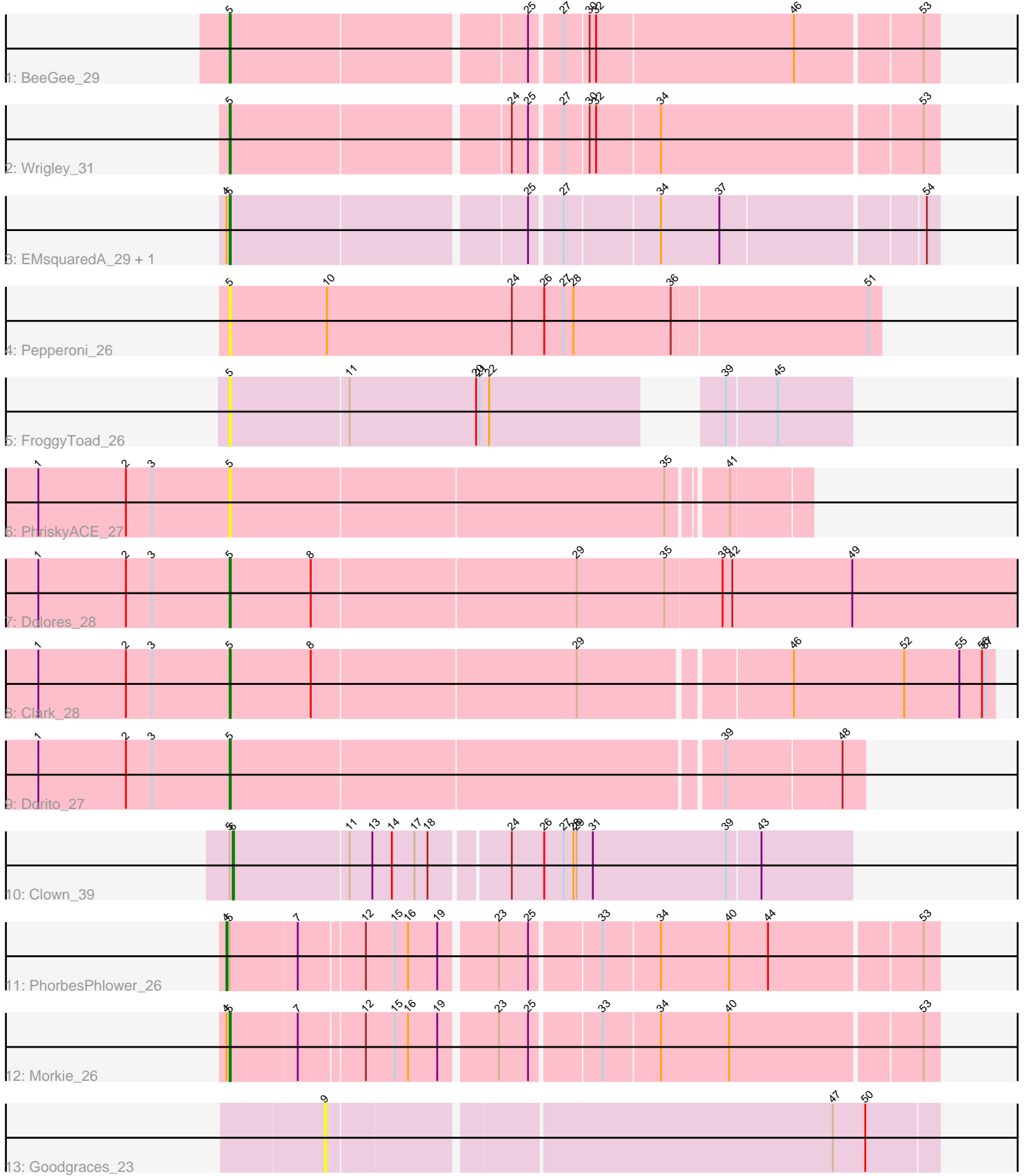


Pham 200752



Note: Tracks are now grouped by subcluster and scaled. Switching in subcluster is indicated by changes in track color. Track scale is now set by default to display the region 30 bp upstream of start 1 to 30 bp downstream of the last possible start. If this default region is judged to be packed too tightly with annotated starts, the track will be further scaled to only show that region of the ORF with annotated starts. This action will be indicated by adding "Zoomed" to the title. For starts, yellow indicates the location of called starts comprised solely of Glimmer/GeneMark auto-annotations, green indicates the location of called starts with at least 1 manual gene annotation.

Pham 200752 Report

This analysis was run 01/18/25 on database version 583.

Pham number 200752 has 14 members, 4 are drafts.

Phages represented in each track:

- Track 1 : BeeGee_29
- Track 2 : Wrigley_31
- Track 3 : EMsquaredA_29, Marteena_29
- Track 4 : Pepperoni_26
- Track 5 : FroggyToad_26
- Track 6 : PhriskyACE_27
- Track 7 : Dolores_28
- Track 8 : Clark_28
- Track 9 : Dorito_27
- Track 10 : Clown_39
- Track 11 : PhorbesPhlower_26
- Track 12 : Morkie_26
- Track 13 : Goodgraces_23

Summary of Final Annotations (See graph section above for start numbers):

The start number called the most often in the published annotations is 5, it was called in 8 of the 10 non-draft genes in the pham.

Genes that call this "Most Annotated" start:

- BeeGee_29, Clark_28, Dolores_28, Dorito_27, EMsquaredA_29, FroggyToad_26, Marteena_29, Morkie_26, Pepperoni_26, PhriskyACE_27, Wrigley_31,

Genes that have the "Most Annotated" start but do not call it:

- Clown_39, PhorbesPhlower_26,

Genes that do not have the "Most Annotated" start:

- Goodgraces_23,

Summary by start number:

Start 4:

- Found in 4 of 14 (28.6%) of genes in pham
- Manual Annotations of this start: 1 of 10

- Called 25.0% of time when present
- Phage (with cluster) where this start called: PhorbesPhlower_26 (DH),

Start 5:

- Found in 13 of 14 (92.9%) of genes in pham
- Manual Annotations of this start: 8 of 10
- Called 84.6% of time when present
- Phage (with cluster) where this start called: BeeGee_29 (CY), Clark_28 (CZ4), Dolores_28 (CZ4), Dorito_27 (CZ4), EMSquaredA_29 (CY1), FroggyToad_26 (CZ2), Marteena_29 (CY1), Morkie_26 (DH), Pepperoni_26 (CZ), PhriskyACE_27 (CZ4), Wrigley_31 (CY),

Start 6:

- Found in 1 of 14 (7.1%) of genes in pham
- Manual Annotations of this start: 1 of 10
- Called 100.0% of time when present
- Phage (with cluster) where this start called: Clown_39 (DC2),

Start 9:

- Found in 1 of 14 (7.1%) of genes in pham
- No Manual Annotations of this start.
- Called 100.0% of time when present
- Phage (with cluster) where this start called: Goodgraces_23 (FD),

Summary by clusters:

There are 8 clusters represented in this pham: CY1, DH, CZ2, CZ4, CZ, CY, FD, DC2,

Info for manual annotations of cluster CY:

- Start number 5 was manually annotated 2 times for cluster CY.

Info for manual annotations of cluster CY1:

- Start number 5 was manually annotated 2 times for cluster CY1.

Info for manual annotations of cluster CZ4:

- Start number 5 was manually annotated 3 times for cluster CZ4.

Info for manual annotations of cluster DC2:

- Start number 6 was manually annotated 1 time for cluster DC2.

Info for manual annotations of cluster DH:

- Start number 4 was manually annotated 1 time for cluster DH.
- Start number 5 was manually annotated 1 time for cluster DH.

Gene Information:

Gene: BeeGee_29 Start: 24605, Stop: 25225, Start Num: 5

Candidate Starts for BeeGee_29:

(Start: 5 @24605 has 8 MA's), (25, 24866), (27, 24893), (30, 24914), (32, 24920), (46, 25100), (53, 25211),

Gene: Clark_28 Start: 23304, Stop: 23987, Start Num: 5

Candidate Starts for Clark_28:

(1, 23127), (2, 23208), (3, 23232), (Start: 5 @23304 has 8 MA's), (8, 23379), (29, 23619), (46, 23802), (52, 23904), (55, 23955), (56, 23976), (57, 23979),

Gene: Clown_39 Start: 32425, Stop: 32979, Start Num: 6

Candidate Starts for Clown_39:

(Start: 5 @32422 has 8 MA's), (Start: 6 @32425 has 1 MA's), (11, 32530), (13, 32551), (14, 32569), (17, 32590), (18, 32602), (24, 32668), (26, 32698), (27, 32716), (28, 32725), (29, 32728), (31, 32743), (39, 32866), (43, 32896),

Gene: Dolores_28 Start: 23280, Stop: 24047, Start Num: 5

Candidate Starts for Dolores_28:

(1, 23103), (2, 23184), (3, 23208), (Start: 5 @23280 has 8 MA's), (8, 23355), (29, 23595), (35, 23676), (38, 23727), (42, 23736), (49, 23847),

Gene: Dorito_27 Start: 22746, Stop: 23312, Start Num: 5

Candidate Starts for Dorito_27:

(1, 22569), (2, 22650), (3, 22674), (Start: 5 @22746 has 8 MA's), (39, 23187), (48, 23292),

Gene: EMSquaredA_29 Start: 24575, Stop: 25189, Start Num: 5

Candidate Starts for EMSquaredA_29:

(Start: 4 @24572 has 1 MA's), (Start: 5 @24575 has 8 MA's), (25, 24836), (27, 24863), (34, 24947), (37, 25001), (54, 25178),

Gene: FroggyToad_26 Start: 22192, Stop: 22704, Start Num: 5

Candidate Starts for FroggyToad_26:

(Start: 5 @22192 has 8 MA's), (11, 22300), (20, 22417), (21, 22420), (22, 22429), (39, 22591), (45, 22636),

Gene: Goodgraces_23 Start: 16580, Stop: 17119, Start Num: 9

Candidate Starts for Goodgraces_23:

(9, 16580), (47, 17024), (50, 17054),

Gene: Marteena_29 Start: 24575, Stop: 25189, Start Num: 5

Candidate Starts for Marteena_29:

(Start: 4 @24572 has 1 MA's), (Start: 5 @24575 has 8 MA's), (25, 24836), (27, 24863), (34, 24947), (37, 25001), (54, 25178),

Gene: Morkie_26 Start: 21978, Stop: 22595, Start Num: 5

Candidate Starts for Morkie_26:

(Start: 4 @21975 has 1 MA's), (Start: 5 @21978 has 8 MA's), (7, 22038), (12, 22095), (15, 22122), (16, 22134), (19, 22161), (23, 22209), (25, 22236), (33, 22296), (34, 22347), (40, 22410), (53, 22581),

Gene: Pepperoni_26 Start: 21851, Stop: 22447, Start Num: 5

Candidate Starts for Pepperoni_26:

(Start: 5 @21851 has 8 MA's), (10, 21941), (24, 22112), (26, 22142), (27, 22160), (28, 22169), (36, 22259), (51, 22436),

Gene: PhorbesPhlower_26 Start: 21975, Stop: 22595, Start Num: 4

Candidate Starts for PhorbesPhlower_26:

(Start: 4 @21975 has 1 MA's), (Start: 5 @21978 has 8 MA's), (7, 22038), (12, 22095), (15, 22122), (16, 22134), (19, 22161), (23, 22209), (25, 22236), (33, 22296), (34, 22347), (40, 22410), (44, 22446), (53, 22581),

Gene: PhriskyACE_27 Start: 22746, Stop: 23258, Start Num: 5

Candidate Starts for PhriskyACE_27:

(1, 22569), (2, 22650), (3, 22674), (Start: 5 @22746 has 8 MA's), (35, 23142), (41, 23187),

Gene: Wrigley_31 Start: 25497, Stop: 26117, Start Num: 5

Candidate Starts for Wrigley_31:

(Start: 5 @25497 has 8 MA's), (24, 25743), (25, 25758), (27, 25785), (30, 25806), (32, 25812), (34, 25869), (53, 26103),