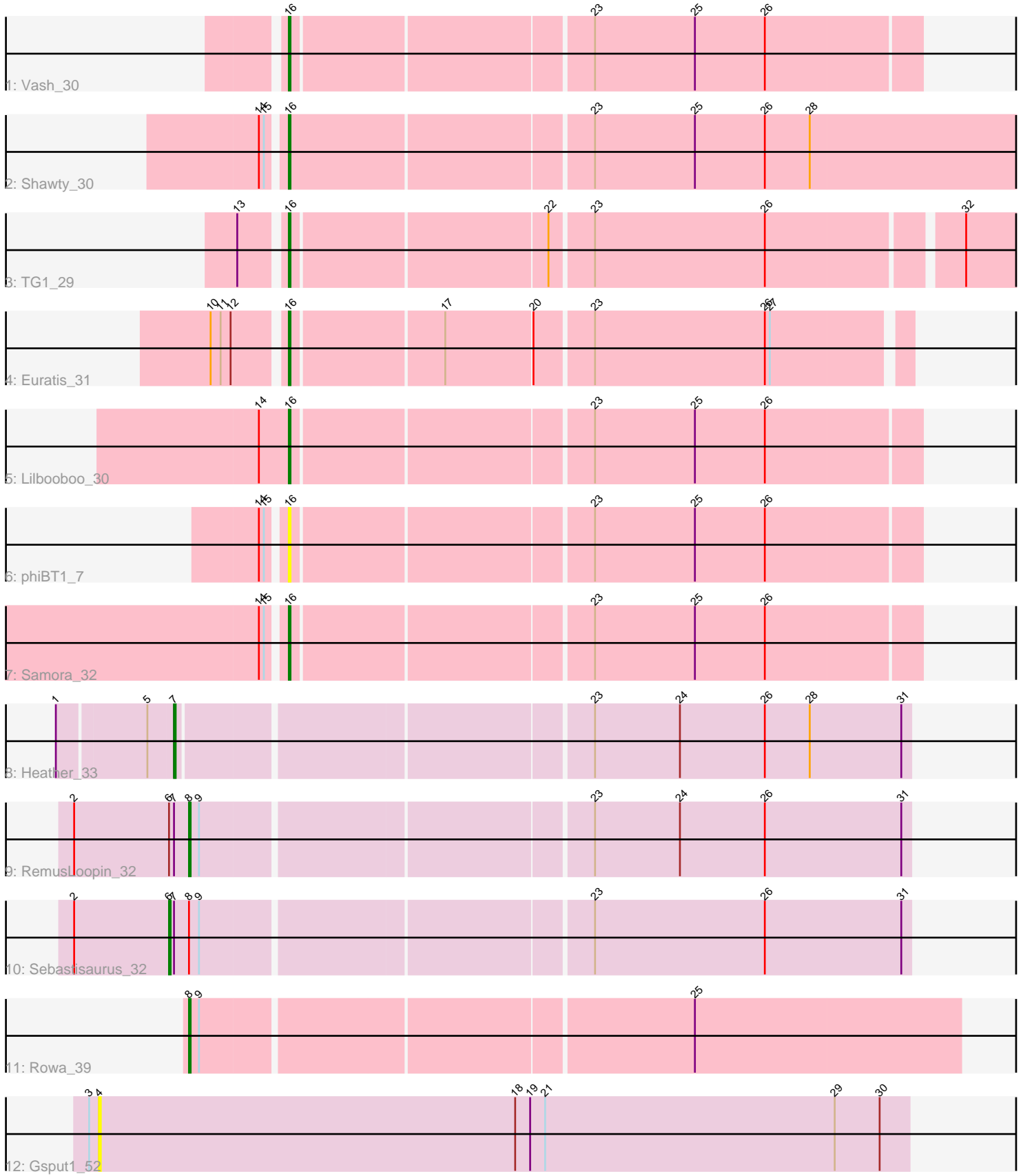


Pham 200762



Note: Tracks are now grouped by subcluster and scaled. Switching in subcluster is indicated by changes in track color. Track scale is now set by default to display the region 30 bp upstream of start 1 to 30 bp downstream of the last possible start. If this default region is judged to be packed too tightly with annotated starts, the track will be further scaled to only show that region of the ORF with annotated starts. This action will be indicated by adding "Zoomed" to the title. For starts, yellow indicates the location of called starts comprised solely of Glimmer/GeneMark auto-annotations, green indicates the location of called starts with at least 1 manual gene annotation.

Pham 200762 Report

This analysis was run 01/18/25 on database version 583.

WARNING: Pham size does not match number of genes in report. Either unphamerated genes have been added (by you) or starterator has removed genes due to invalid start codon.

Pham number 200762 has 12 members, 2 are drafts.

Phages represented in each track:

- Track 1 : Vash_30
- Track 2 : Shawty_30
- Track 3 : TG1_29
- Track 4 : Euratis_31
- Track 5 : Lilbooboo_30
- Track 6 : phiBT1_7
- Track 7 : Samora_32
- Track 8 : Heather_33
- Track 9 : RemusLoopin_32
- Track 10 : Sebastisaurus_32
- Track 11 : Rowa_39
- Track 12 : Gspu1_52

Summary of Final Annotations (See graph section above for start numbers):

The start number called the most often in the published annotations is 16, it was called in 6 of the 10 non-draft genes in the pham.

Genes that call this "Most Annotated" start:

- Euratis_31, Lilbooboo_30, Samora_32, Shawty_30, TG1_29, Vash_30, phiBT1_7,

Genes that have the "Most Annotated" start but do not call it:

-

Genes that do not have the "Most Annotated" start:

- Gspu1_52, Heather_33, RemusLoopin_32, Rowa_39, Sebastisaurus_32,

Summary by start number:

Start 4:

- Found in 1 of 12 (8.3%) of genes in pham
- No Manual Annotations of this start.
- Called 100.0% of time when present
- Phage (with cluster) where this start called: Gsput1_52 (CU2),

Start 6:

- Found in 2 of 12 (16.7%) of genes in pham
- Manual Annotations of this start: 1 of 10
- Called 50.0% of time when present
- Phage (with cluster) where this start called: Sebastisaurus_32 (BB2),

Start 7:

- Found in 3 of 12 (25.0%) of genes in pham
- Manual Annotations of this start: 1 of 10
- Called 33.3% of time when present
- Phage (with cluster) where this start called: Heather_33 (BB2),

Start 8:

- Found in 3 of 12 (25.0%) of genes in pham
- Manual Annotations of this start: 2 of 10
- Called 66.7% of time when present
- Phage (with cluster) where this start called: RemusLoopin_32 (BB2), Rowa_39 (BL),

Start 16:

- Found in 7 of 12 (58.3%) of genes in pham
- Manual Annotations of this start: 6 of 10
- Called 100.0% of time when present
- Phage (with cluster) where this start called: Euratis_31 (BB1), Lilbooboo_30 (BB1), Samora_32 (BB1), Shawty_30 (BB1), TG1_29 (BB1), Vash_30 (BB1), phiBT1_7 (BB1),

Summary by clusters:

There are 4 clusters represented in this pham: BL, BB2, BB1, CU2,

Info for manual annotations of cluster BB1:

- Start number 16 was manually annotated 6 times for cluster BB1.

Info for manual annotations of cluster BB2:

- Start number 6 was manually annotated 1 time for cluster BB2.
- Start number 7 was manually annotated 1 time for cluster BB2.
- Start number 8 was manually annotated 1 time for cluster BB2.

Info for manual annotations of cluster BL:

- Start number 8 was manually annotated 1 time for cluster BL.

Gene Information:

Gene: Euratis_31 Start: 22823, Stop: 23176, Start Num: 16

Candidate Starts for Euratis_31:

(10, 22784), (11, 22790), (12, 22796), (Start: 16 @22823 has 6 MA's), (17, 22910), (20, 22961), (23, 22994), (26, 23096), (27, 23099),

Gene: Gspu1_52 Start: 36371, Stop: 36856, Start Num: 4

Candidate Starts for Gspu1_52:

(3, 36365), (4, 36371), (18, 36620), (19, 36629), (21, 36638), (29, 36812), (30, 36839),

Gene: Heather_33 Start: 23706, Stop: 24128, Start Num: 7

Candidate Starts for Heather_33:

(1, 23640), (5, 23691), (Start: 7 @23706 has 1 MA's), (23, 23940), (24, 23991), (26, 24042), (28, 24069), (31, 24123),

Gene: Lilbooboo_30 Start: 22871, Stop: 23233, Start Num: 16

Candidate Starts for Lilbooboo_30:

(14, 22853), (Start: 16 @22871 has 6 MA's), (23, 23042), (25, 23102), (26, 23144),

Gene: RemusLoopin_32 Start: 23906, Stop: 24322, Start Num: 8

Candidate Starts for RemusLoopin_32:

(2, 23837), (Start: 6 @23894 has 1 MA's), (Start: 7 @23897 has 1 MA's), (Start: 8 @23906 has 2 MA's), (9, 23912), (23, 24134), (24, 24185), (26, 24236), (31, 24317),

Gene: Rowa_39 Start: 26669, Stop: 27115, Start Num: 8

Candidate Starts for Rowa_39:

(Start: 8 @26669 has 2 MA's), (9, 26675), (25, 26957),

Gene: Samora_32 Start: 23469, Stop: 23831, Start Num: 16

Candidate Starts for Samora_32:

(14, 23457), (15, 23460), (Start: 16 @23469 has 6 MA's), (23, 23640), (25, 23700), (26, 23742),

Gene: Sebastisaurus_32 Start: 23688, Stop: 24116, Start Num: 6

Candidate Starts for Sebastisaurus_32:

(2, 23631), (Start: 6 @23688 has 1 MA's), (Start: 7 @23691 has 1 MA's), (Start: 8 @23700 has 2 MA's), (9, 23706), (23, 23928), (26, 24030), (31, 24111),

Gene: Shawty_30 Start: 23340, Stop: 23774, Start Num: 16

Candidate Starts for Shawty_30:

(14, 23328), (15, 23331), (Start: 16 @23340 has 6 MA's), (23, 23514), (25, 23574), (26, 23616), (28, 23643),

Gene: TG1_29 Start: 22916, Stop: 23344, Start Num: 16

Candidate Starts for TG1_29:

(13, 22892), (Start: 16 @22916 has 6 MA's), (22, 23063), (23, 23087), (26, 23189), (32, 23297),

Gene: Vash_30 Start: 22721, Stop: 23083, Start Num: 16

Candidate Starts for Vash_30:

(Start: 16 @22721 has 6 MA's), (23, 22892), (25, 22952), (26, 22994),

Gene: phiBT1_7 Start: 24178, Stop: 24540, Start Num: 16

Candidate Starts for phiBT1_7:

(14, 24166), (15, 24169), (Start: 16 @24178 has 6 MA's), (23, 24349), (25, 24409), (26, 24451),