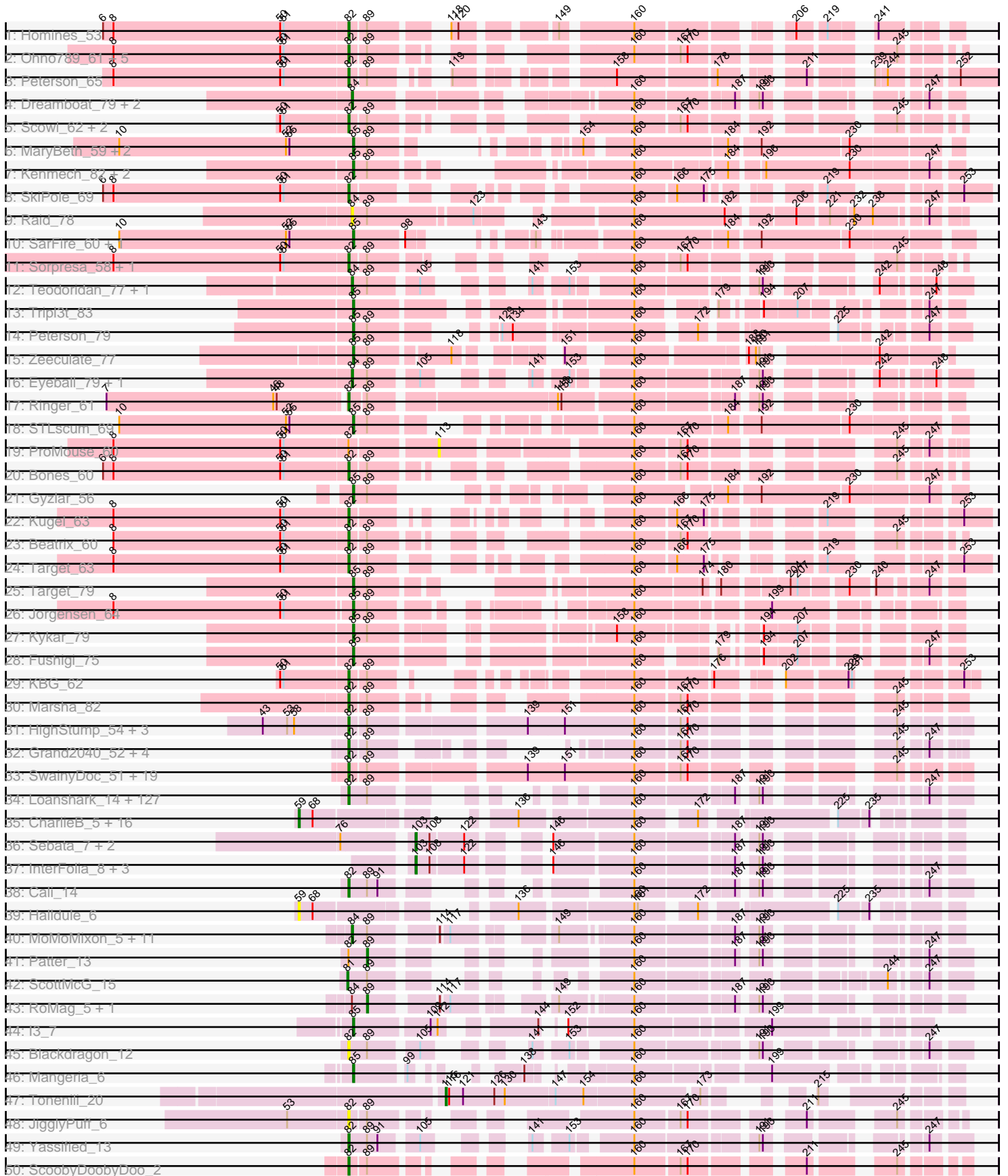
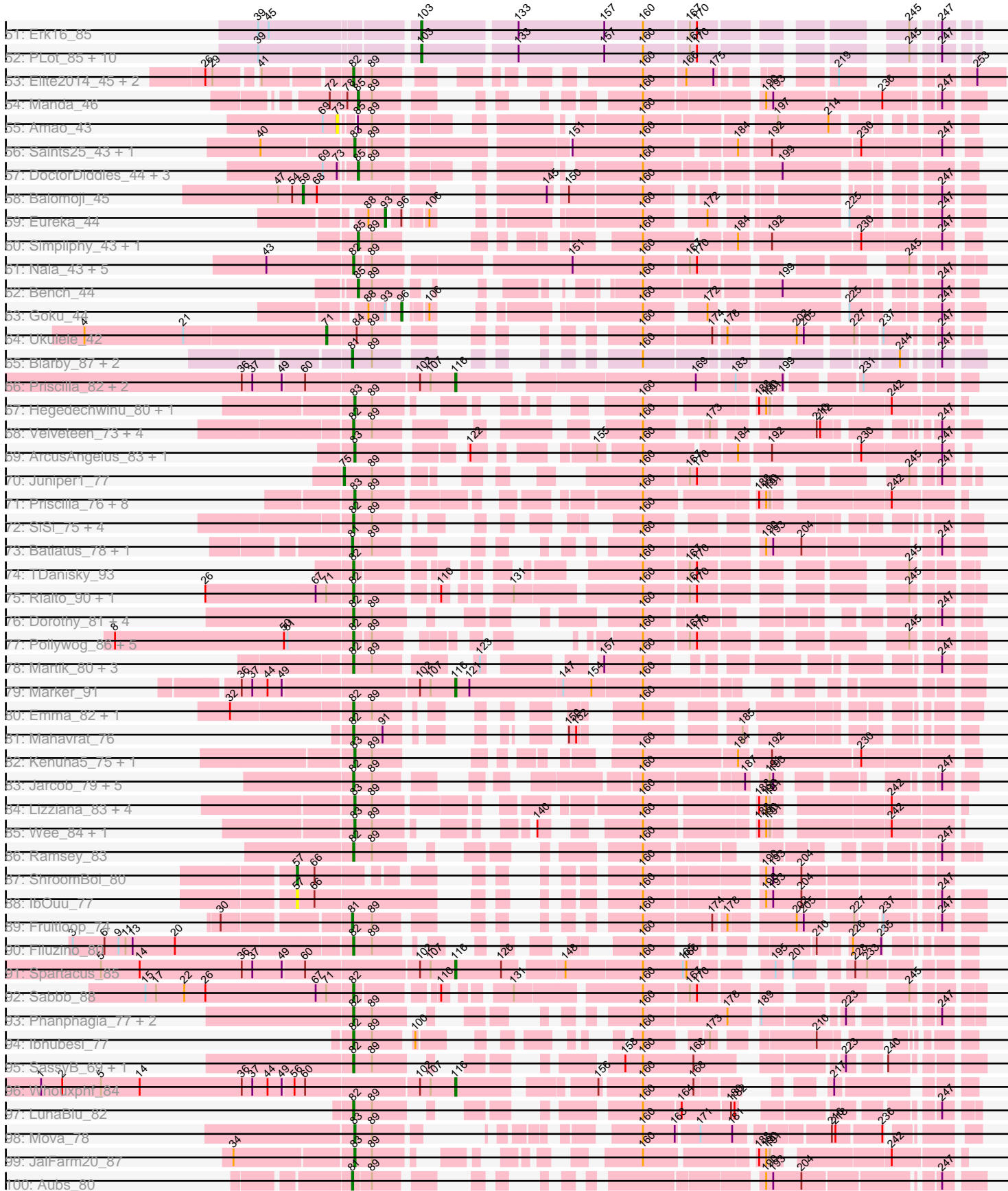


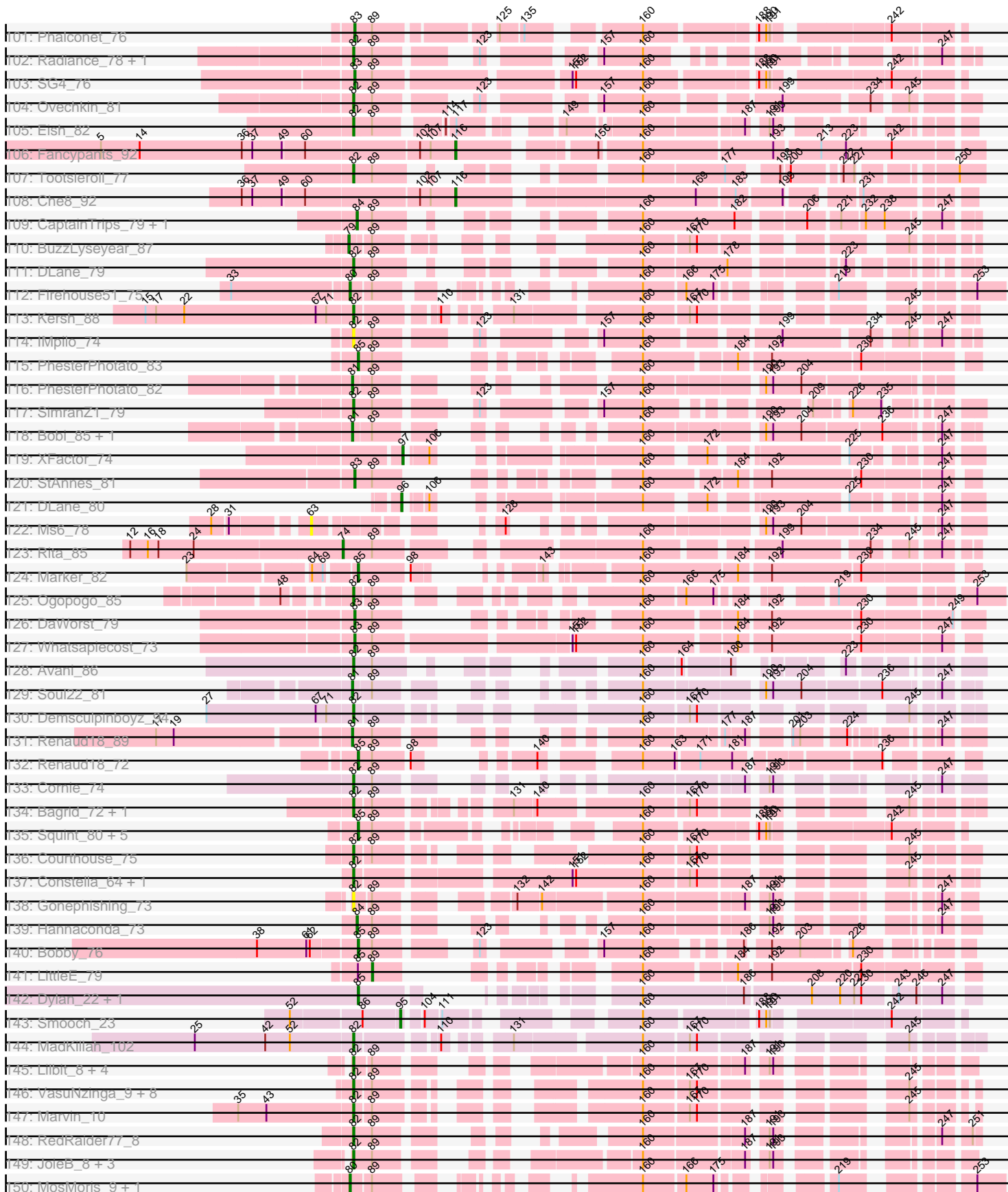
Pham 202570



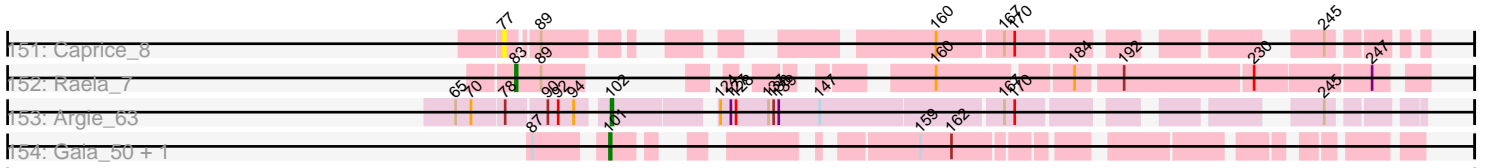
Pham 202570



Pham 202570



Pham 202570



Note: Tracks are now grouped by subcluster and scaled. Switching in subcluster is indicated by changes in track color. Track scale is now set by default to display the region 30 bp upstream of start 1 to 30 bp downstream of the last possible start. If this default region is judged to be packed too tightly with annotated starts, the track will be further scaled to only show that region of the ORF with annotated starts. This action will be indicated by adding "Zoomed" to the title. For starts, yellow indicates the location of called starts comprised solely of Glimmer/GeneMark auto-annotations, green indicates the location of called starts with at least 1 manual gene annotation.

Pham 202570 Report

This analysis was run 01/18/25 on database version 583.

Pham number 202570 has 458 members, 34 are drafts.

Phages represented in each track:

- Track 1 : Homines_53
- Track 2 : Ohno789_61, Dreamboat_62, PherrisBueller_60, Graduation_65, Jasper_61, Cueyllyss_61
- Track 3 : Peterson_65
- Track 4 : Dreamboat_79, Jasper_78, PherrisBueller_78
- Track 5 : Scowl_62, StrongArm_59, Bexan_58
- Track 6 : MaryBeth_59, Corvo_62, MetalQZJ_58
- Track 7 : Kenmech_82, Abbysshoes_80, Dussy_79
- Track 8 : SkiPole_69
- Track 9 : Raid_78
- Track 10 : SarFire_60, Thor_60
- Track 11 : Sorpresa_58, Sandaddy_57
- Track 12 : Teodoridan_77, Ajay_76
- Track 13 : Tripl3t_83
- Track 14 : Peterson_79
- Track 15 : Zeeculate_77
- Track 16 : Eyeball_79, KSSJEB_78
- Track 17 : Ringer_61
- Track 18 : STLscum_69
- Track 19 : ProMouse_60
- Track 20 : Bones_60
- Track 21 : Gyzlar_56
- Track 22 : Kugel_63
- Track 23 : Beatrix_60
- Track 24 : Target_63
- Track 25 : Target_79
- Track 26 : Jorgensen_64
- Track 27 : Kykar_79
- Track 28 : Fushigi_75
- Track 29 : KBG_62
- Track 30 : Marsha_82
- Track 31 : HighStump_54, Iridessa_54, Longacauda_53, Legolas_54
- Track 32 : Grand2040_52, LeiMonet_54, Cosmolli16_53, Maru_52, Giraffe_53
- Track 33 : SwainyDoc_51, Chentzyk_51, Kronus_50, Childish_52, Phayeta_52, Soile_53, SlippinJimmy_52, Gervas_51, Ben11_50, Kahve_52, DaddyDaniels_54, Mortcellus_50, Casbah_50, Craff_55, TinyTerror_51, Rita1961_51, MmasiCarm_51, Obutu_51, Brilliant_54, HenryJackson_52

- Track 34 : Loanshark_14, Pinkcreek_9, Teardrop_13, StubbySaigey_13, BananaFence_14, YemiJoy2021_14, SVoro_14, Essence_13, LifeSavor_14, Belieber_12, Ewok_14, Kboogie_13, Pleione_15, Bonray_14, Dietrick_12, Ablatia_12, Jessibeth14_14, NedWong_14, Trinitium_13, Phlegm_14, ZygoTaiga_15, Delilah_14, Janiyra_13, InigoMontoya_14, Gizmo_15, Gamgam_13, Pivoine_13, McWolfish_14, Capablanca_14, ChickenPhender_13, Adlitam_13, ErnieJ_17, PurduePete_14, Rizal_13, Naija_13, FoxtrotP1_15, Khaleesi_14, Derek_14, Caravan_16, ValleyTerrace_13, Shifa_10, Shelob_17, Bipolarisk_14, Morizzled23_13, Amataga_13, DrPhinkDaddy_14, Sprinklers_13, Turret_13, Zalkecks_15, Darko_13, Wally_13, Bread_14, Ava3_15, Jaygup_13, Alice_12, Latch_13, Tortoise16_12, Rahel_13, Basquiat_13, Matsumoto_12, Phusco_13, CindyLou_13, SilverDipper_13, Shnickers_13, JPickles_13, BackyardAgain_12, CharlieB_15, TinyTim_14, Megamind_14, Atlantean_13, Napoleon13_13, ET08_12, ArcherS7_13, ChaylaJr_13, EmToTheThree_17, Rabinovish_12, Jedediah_13, Erdmann_14, LRRHood_14, EmmaElysia_13, HyRo_11, Quasimodo_13, SrishMeg2525_14, Ghost_14, Norm_14, Chomp_13, Littleton_14, Zeenon_16, Maby2021_14, Daffodil_15, Guwapp_13, FudgeTart_14, Breeniome_14, Phox_14, EasyJones_13, Ngannou_13, Babyland_13, Roots515_14, Chargie21_13, Momo_13, Delylah_16, ParkTD_14, Catera_13, MikeLiesIn_15, Audrick_14, Blackbrain_13, JustHall_13, Melpomini_13, Willis_14, Stubby_14, Jemmno_12, BadAgartude_14, Fludd_13, SmallFry_13, McGee_13, Izajani_14, Burrough_14, Yucca_13, Issimir_14, Shrimp_14, YoungMoneyMata_13, Salacia_15, Gabriel_14, ShiaLabeouf_13, Bangla1971_13, Flabslab_13, Cactojaque_12, Ading_13
- Track 35 : CharlieB_5, Yassified_6, Ronan_6, Blackdragon_5, Shaqnato_6, LRRHood_6, Koguma_6, Grungle_6, Bigswole_5, Cali_6, Phox_6, Lethe_6, Sprinklers_6, Lukilu_6, IkeLoa_6, ET08_5, BeanWater_5
- Track 36 : Sebata_7, JayJay_6, LinStu_7
- Track 37 : InterFolia_8, DTDevon_8, Tyke_8, Drazdys_8
- Track 38 : Cali_14
- Track 39 : Halldule_6
- Track 40 : MoMoMixon_5, ScottMcG_5, Nidhogg_5, Pio_6, Mikro_6, Astraea_6, Bxz1_6, NoodleTree_6, Spud_6, QBert_6, Sauce_5, DirtMonster_6
- Track 41 : Patter_13
- Track 42 : ScottMcG_15
- Track 43 : RoMag_5, Kamryn_6
- Track 44 : l3_7
- Track 45 : Blackdragon_12
- Track 46 : Mangeria_6
- Track 47 : Tonenili_20
- Track 48 : JigglyPuff_6
- Track 49 : Yassified_13
- Track 50 : ScoobyDoobyDoo_2
- Track 51 : Erk16_85
- Track 52 : PLOT_85, Mopey_86, Prager_84, Penelope2018_84, Visconti_85, WaldoWhy_85, Chill_85, Bitterscotch_82, Giuseppe_86, Adjutor_82, Thoth_84
- Track 53 : Elite2014_45, Lilpickle_45, ChosenOne_46
- Track 54 : Manda_46
- Track 55 : Amao_43
- Track 56 : Saints25_43, Highbury_43
- Track 57 : DoctorDiddles_44, ChotaBhai_44, Pat3_42, BaboJay_42
- Track 58 : Balomoji_45
- Track 59 : Eureka_44
- Track 60 : Simliphy_43, Petruccio_60

- Track 61 : Nala_43, Rimmer_43, Youngblood_44, MPhalcon_42, Buck_43, MISSy_42
- Track 62 : Bench_44
- Track 63 : Goku_44
- Track 64 : Ukulele_42
- Track 65 : Blarby_87, Zapner_87, Jabbawokkie_88
- Track 66 : Priscilla_82, Koella_74, NormanBulbieJr_80
- Track 67 : Hegedechwinu_80, Crumble_76
- Track 68 : Velveteen_73, Sarma624_77, BigPhil_72, Cerasum_72, Coco12_75
- Track 69 : ArcusAngelus_83, Chevrolet_86
- Track 70 : Juniper1_77
- Track 71 : Priscilla_76, NormanBulbieJr_75, Cabrinians_78, SwagPiggett_82, FreddyB_88, Koella_70, Brocalys_71, LastJedi_70, BobaPhett_81
- Track 72 : SiSi_75, Girr_75, Ruby_73, MisterCuddles_76, Veteran_71
- Track 73 : Batiatus_78, Tweety_79
- Track 74 : TDanisky_93
- Track 75 : Rialto_90, Moonbeam_87
- Track 76 : Dorothy_81, RedBird_81, Sassafras_81, Inventum_78, SuperGrey_79
- Track 77 : Pollywog_86, GageAP_62, Makemake_63, NEHalo_58, AFIS_57, SpikeBT_59
- Track 78 : Martik_80, Pippy_75, Blexus_75, Leozinho_78
- Track 79 : Marker_91
- Track 80 : Emma_82, Mantra_76
- Track 81 : Mahavrat_76
- Track 82 : Kenuha5_75, Gandalph_77
- Track 83 : Jarcob_79, Clifton_72, Philus_82, James_80, DRBy19_83, OlympiaSaint_79
- Track 84 : Lizziana_83, Saal_78, Gorge_80, Flathead_78, Donkeykong_83
- Track 85 : Wee_84, Taj_85
- Track 86 : Ramsey_83
- Track 87 : ShroomBoi_80
- Track 88 : IbOuu_77
- Track 89 : Fruitloop_74
- Track 90 : Filuzino_80
- Track 91 : Spartacus_85
- Track 92 : Sabbb_88
- Track 93 : Phanphagia_77, Shauna1_78, Kingsley_82
- Track 94 : lbhubesi_77
- Track 95 : SassyB_69, PopTart_69
- Track 96 : Whouxphf_84
- Track 97 : LunaBlu_82
- Track 98 : Mova_78
- Track 99 : JalFarm20_87
- Track 100 : Aubs_80
- Track 101 : Phalconet_76
- Track 102 : Radiance_78, Dante_78
- Track 103 : SG4_76
- Track 104 : Ovechkin_81
- Track 105 : Eish_82
- Track 106 : Fancypants_92
- Track 107 : Tootsieroll_77
- Track 108 : Che8_92
- Track 109 : CaptainTrips_79, MinionDave_75

- Track 110 : BuzzLyseyear_87
- Track 111 : DLane_79
- Track 112 : Firehouse51_75
- Track 113 : Kersh_88
- Track 114 : IMpilo_74
- Track 115 : PhesterPhotato_83
- Track 116 : PhesterPhotato_82
- Track 117 : SimranZ1_79
- Track 118 : Bobi_85, Krakatau_74
- Track 119 : XFactor_74
- Track 120 : StAnnes_81
- Track 121 : DLane_80
- Track 122 : Ms6_78
- Track 123 : Rita_85
- Track 124 : Marker_82
- Track 125 : Ogopogo_85
- Track 126 : DaWorst_79
- Track 127 : Whatsapiecost_73
- Track 128 : Avani_86
- Track 129 : Soul22_81
- Track 130 : Demsculpinboyz_94
- Track 131 : Renaud18_89
- Track 132 : Renaud18_72
- Track 133 : Cornie_74
- Track 134 : Bagrid_72, EricMillard_72
- Track 135 : Squint_80, Lucky2013_77, Porcelain_79, MiaZeal_80, Superphikiman_77, Ariel_79
- Track 136 : Courthouse_75
- Track 137 : Constella_64, Thibault_65
- Track 138 : Gonephishing_73
- Track 139 : Hannaconda_73
- Track 140 : Bobby_76
- Track 141 : LittleE_79
- Track 142 : Dylan_22, Zakhe101_23
- Track 143 : Smooch_23
- Track 144 : MadKillah_102
- Track 145 : Lilbit_8, FeliMaine_8, Pringar_7, Beelzebub_9, Clarkson_8
- Track 146 : VasuNzinga_9, Khan1_53, Fringe_56, MrPhizzler_53, Rimu_56, Latretium_78, RedRaider77_10, Lumine_53, Gwilliam_54
- Track 147 : Marvin_10
- Track 148 : RedRaider77_8
- Track 149 : JoieB_8, Huphlepuuff_7, LittleLaf_7, Corazon_7
- Track 150 : MosMoris_9, Gattaca_9
- Track 151 : Caprice_8
- Track 152 : Raela_7
- Track 153 : Argie_63
- Track 154 : Gaia_50, Nebkiss_54

Summary of Final Annotations (See graph section above for start numbers):

The start number called the most often in the published annotations is 82, it was called in 257 of the 424 non-draft genes in the pham.

Genes that call this "Most Annotated" start:

- AFIS_57, Ablatia_12, Ading_13, Adlitam_13, Alice_12, Amataga_13, ArcherS7_13, Atlantean_13, Audrick_14, Ava3_15, Avani_86, Babyland_13, BackyardAgain_12, BadAgartude_14, Bagrid_72, BananaFence_14, Bangla1971_13, Basquiat_13, Beatrix_60, Beelzebub_9, Belieber_12, Ben11_50, Bexan_58, BigPhil_72, Bipolarisk_14, Blackbrain_13, Blackdragon_12, Blexus_75, Bones_60, Bonray_14, Bread_14, Breeniome_14, Brilliant_54, Buck_43, Burrough_14, Cactojaque_12, Cali_14, Capablanca_14, Caravan_16, Casbah_50, Catera_13, Cerasum_72, Chargie21_13, CharlieB_15, ChaylaJr_13, Chentzyk_51, ChickenPhender_13, Childish_52, Chomp_13, ChosenOne_46, CindyLou_13, Clarkson_8, Clifton_72, Coco12_75, Constella_64, Corazon_7, Cornie_74, Cosmolli16_53, Courthouse_75, Craff_55, Cueylyss_61, DLane_79, DRBy19_83, DaddyDaniels_54, Daffodil_15, Dante_78, Darko_13, Delilah_14, Delylah_16, Demsculpinboyz_94, Derek_14, Dietrick_12, Dorothy_81, DrPhinkDaddy_14, Dreamboat_62, ET08_12, EasyJones_13, Eish_82, Elite2014_45, EmToTheThree_17, EmmaElysia_13, Emma_82, Erdmann_14, EricMillard_72, ErnieJ_17, Essence_13, Ewok_14, FeliMaine_8, Filuzino_80, Flabslab_13, Fludd_13, FoxtrotP1_15, Fringe_56, FudgeTart_14, Gabriel_14, GageAP_62, Gamgam_13, Gervas_51, Ghost_14, Giraffe_53, Girr_75, Gizmo_15, Gonephishing_73, Graduation_65, Grand2040_52, Guwapp_13, Gwilliam_54, HenryJackson_52, HighStump_54, Homines_53, Huphlepuuff_7, HyRo_11, IMpilo_74, Ibhubesi_77, InigoMontoya_14, Inventum_78, Iridessa_54, Issimir_14, Izajani_14, JPickles_13, James_80, Janiyra_13, Jarcob_79, Jasper_61, Jaygup_13, Jedediah_13, Jemmno_12, Jessibeth14_14, JigglyPuff_6, JoieB_8, JustHall_13, KBG_62, Kahve_52, Kboogie_13, Kersh_88, Khaleesi_14, Khan1_53, Kingsley_82, Kronus_50, Kugel_63, LRRHood_14, Latch_13, Latretium_78, Legolas_54, LeiMonet_54, Leozinho_78, LifeSavor_14, Lilbit_8, Lilpickle_45, LittleLaf_7, Littleton_14, Loanshark_14, Longacauda_53, Lumine_53, LunaBlu_82, MISSy_42, MPhalcon_42, Maby2021_14, MadKillah_102, Mahavrat_76, Makemake_63, Mantra_76, Marsha_82, Martik_80, Maru_52, Marvin_10, Matsumoto_12, McGee_13, McWolfish_14, Megamind_14, Melpomini_13, MikeLiesIn_15, MisterCuddles_76, MmasiCarm_51, Momo_13, Moonbeam_87, Morizzled23_13, Mortcellus_50, MrPhizzler_53, NEHalo_58, Naija_13, Nala_43, Napoleon13_13, NedWong_14, Ngannou_13, Norm_14, Obutu_51, Ogoopogo_85, Ohno789_61, OlympiaSaint_79, Ovechkin_81, ParkTD_14, Peterson_65, Phanphagia_77, Phayeta_52, PherrisBueller_60, Philus_82, Phlegm_14, Phox_14, Phusco_13, Pinkcreek_9, Pippy_75, Pivoine_13, Pleione_15, Pollywog_86, PopTart_69, Pringar_7, PurduePete_14, Quasimodo_13, Rabinovich_12, Radiance_78, Rahel_13, Ramsey_83, RedBird_81, RedRaider77_10, RedRaider77_8, Rialto_90, Rimmer_43, Rimu_56, Ringer_61, Rita1961_51, Rizal_13, Roots515_14, Ruby_73, SVoro_14, Sabbb_88, Salacia_15, Sandaddy_57, Sarma624_77, Sassafras_81, SassyB_69, ScoobyDoobyDoo_2, Scowl_62, Shauna1_78, Shelob_17, ShiaLabeouf_13, Shifa_10, Shnickers_13, Shrimp_14, SiSi_75, SilverDipper_13, SimranZ1_79, SkiPole_69, SlippinJimmy_52, SmallFry_13, Soile_53, Sorpresa_58, SpikeBT_59, Sprinklers_13, SrishMeg2525_14, StrongArm_59, StubbySaigey_13, Stubby_14, SuperGrey_79, SwainyDoc_51, TDanisky_93, Target_63, Teardrop_13, Thibault_65, TinyTerror_51, TinyTim_14, Tootsieroll_77, Tortoise16_12, Trinitium_13, Turret_13, ValleyTerrace_13, VasuNzinga_9, Velveteen_73, Veteran_71, Wally_13, Willis_14, Yassified_13, YemiJoy2021_14, YoungMoneyMata_13, Youngblood_44, Yucca_13, Zalkecks_15, Zeenon_16, ZygoTaiga_15,

Genes that have the "Most Annotated" start but do not call it:

- Patter_13, ProMouse_60,

Genes that do not have the "Most Annotated" start:

- Abbyshoes_80, Adjutor_82, Ajay_76, Amao_43, ArcusAngelus_83, Argie_63, Ariel_79, Astraea_6, Aubs_80, BaboJay_42, Balomoji_45, Batiatus_78, BeanWater_5, Bench_44, Bigswole_5, Blackdragon_5, Blarby_87, BobaPhett_81, Bobby_76, Bobi_85, Brocalys_71, Butterscotch_82, BuzzLyseyear_87, Bxz1_6, Cabrinians_78, Cali_6, Caprice_8, CaptainTrips_79, CharlieB_5, Che8_92, Chevrolet_86, Chill_85, ChotaBhai_44, Corvo_62, Crumble_76, DLane_80, DTDevon_8, DaWorst_79, DirtMonster_6, DoctorDiddles_44, Donkeykong_83, Drazdys_8, Dreamboat_79, Dussy_79, Dylan_22, ET08_5, Erk16_85, Eureka_44, Eyeball_79, Fancypants_92, Firehouse51_75, Flathead_78, FreddyB_88, Fruitloop_74, Fushigi_75, Gaia_50, Gandolph_77, Gattaca_9, Giuseppe_86, Goku_44, Gorge_80, Grungle_6, Gyzlar_56, Halldule_6, Hannaconda_73, Hegedechwinu_80, Highbury_43, I3_7, IbOuu_77, IkeLoa_6, InterFolia_8, Jabbawokkie_88, JalFarm20_87, Jasper_78, JayJay_6, Jorgensen_64, Juniper1_77, KSSJEB_78, Kamryn_6, Kenmech_82, Kenuha5_75, Koella_70, Koella_74, Koguma_6, Krakatau_74, Kykar_79, LRRHood_6, LastJedi_70, Lethe_6, LinStu_7, LittleE_79, Lizziana_83, Lucky2013_77, Lukilu_6, Manda_46, Mangeria_6, Marker_82, Marker_91, MaryBeth_59, MetalQZJ_58, MiaZeal_80, Mikro_6, MinionDave_75, MoMoMixon_5, Mopey_86, MosMoris_9, Mova_78, Ms6_78, Nebkiss_54, Nidhogg_5, NoodleTree_6, NormanBulbieJr_75, NormanBulbieJr_80, PLOT_85, Pat3_42, Penelope2018_84, Peterson_79, Petruccio_60, Phalconet_76, PherrisBueller_78, PhesterPhotato_82, PhesterPhotato_83, Phox_6, Pio_6, Porcelain_79, Prager_84, Priscilla_76, Priscilla_82, QBert_6, Raela_7, Raid_78, Renaud18_72, Renaud18_89, Rita_85, RoMag_5, Ronan_6, SG4_76, STLscum_69, Saal_78, Saints25_43, SarFire_60, Sauce_5, ScottMcG_15, ScottMcG_5, Sebata_7, Shaqnato_6, ShroomBoi_80, Simpliphy_43, Smooch_23, Soul22_81, Spartacus_85, Sprinklers_6, Spud_6, Squint_80, StAnnes_81, Superphikiman_77, SwagPigglett_82, Taj_85, Target_79, Teodoridan_77, Thor_60, Thoth_84, Tonenili_20, Tripl3t_83, Tweety_79, Tyke_8, Ukulele_42, Visconti_85, WaldoWhy_85, Wee_84, Whatsapiecost_73, Whouxphf_84, XFactor_74, Yassified_6, Zakhe101_23, Zapner_87, Zeeculate_77,

Summary by start number:

Start 57:

- Found in 2 of 458 (0.4%) of genes in pham
- Manual Annotations of this start: 1 of 424
- Called 100.0% of time when present
- Phage (with cluster) where this start called: IbOuu_77 (F1), ShroomBoi_80 (F1),

Start 59:

- Found in 19 of 458 (4.1%) of genes in pham
- Manual Annotations of this start: 16 of 424
- Called 100.0% of time when present
- Phage (with cluster) where this start called: Balomoji_45 (E), BeanWater_5 (C1), Bigswole_5 (C1), Blackdragon_5 (C1), Cali_6 (C1), CharlieB_5 (C1), ET08_5 (C1), Grungle_6 (C1), Halldule_6 (C1), IkeLoa_6 (C1), Koguma_6 (C1), LRRHood_6 (C1), Lethe_6 (C1), Lukilu_6 (C1), Phox_6 (C1), Ronan_6 (C1), Shaqnato_6 (C1), Sprinklers_6 (C1), Yassified_6 (C1),

Start 63:

- Found in 1 of 458 (0.2%) of genes in pham
- No Manual Annotations of this start.
- Called 100.0% of time when present
- Phage (with cluster) where this start called: Ms6_78 (F1),

Start 71:

- Found in 6 of 458 (1.3%) of genes in pham
- Manual Annotations of this start: 1 of 424
- Called 16.7% of time when present
- Phage (with cluster) where this start called: Ukulele_42 (E),

Start 73:

- Found in 5 of 458 (1.1%) of genes in pham
- No Manual Annotations of this start.
- Called 20.0% of time when present
- Phage (with cluster) where this start called: Amao_43 (E),

Start 74:

- Found in 1 of 458 (0.2%) of genes in pham
- Manual Annotations of this start: 1 of 424
- Called 100.0% of time when present
- Phage (with cluster) where this start called: Rita_85 (F1),

Start 75:

- Found in 1 of 458 (0.2%) of genes in pham
- Manual Annotations of this start: 1 of 424
- Called 100.0% of time when present
- Phage (with cluster) where this start called: Juniper1_77 (F1),

Start 77:

- Found in 1 of 458 (0.2%) of genes in pham
- No Manual Annotations of this start.
- Called 100.0% of time when present
- Phage (with cluster) where this start called: Caprice_8 (S),

Start 79:

- Found in 1 of 458 (0.2%) of genes in pham
- Manual Annotations of this start: 1 of 424
- Called 100.0% of time when present
- Phage (with cluster) where this start called: BuzzLyseyear_87 (F1),

Start 80:

- Found in 3 of 458 (0.7%) of genes in pham
- Manual Annotations of this start: 3 of 424
- Called 100.0% of time when present
- Phage (with cluster) where this start called: Firehouse51_75 (F1), Gattaca_9 (S), MosMoris_9 (S),

Start 81:

- Found in 13 of 458 (2.8%) of genes in pham
- Manual Annotations of this start: 12 of 424

- Called 100.0% of time when present
- Phage (with cluster) where this start called: Aubs_80 (F1), Batiatus_78 (F1), Blarby_87 (F), Bobi_85 (F1), Fruitloop_74 (F1), Jabbawokkie_88 (F2), Krakatau_74 (F1), PhesterPotato_82 (F1), Renaud18_89 (F4), ScottMcG_15 (C1), Soul22_81 (F2), Tweety_79 (F1), Zapner_87 (F2),

Start 82:

- Found in 281 of 458 (61.4%) of genes in pham
- Manual Annotations of this start: 257 of 424
- Called 99.3% of time when present
- Phage (with cluster) where this start called: AFIS_57 (A1), Ablatia_12 (C1), Ading_13 (C1), Adlitam_13 (C1), Alice_12 (C1), Amataga_13 (C1), ArcherS7_13 (C1), Atlantean_13 (C1), Audrick_14 (C1), Ava3_15 (C1), Avani_86 (F2), Babyland_13 (C1), BackyardAgain_12 (C1), BadAgartude_14 (C1), Bagrid_72 (J), BananaFence_14 (C1), Bangla1971_13 (C1), Basquiat_13 (C1), Beatrix_60 (A1), Beelzebub_9 (S), Belieber_12 (C1), Ben11_50 (B3), Bexan_58 (A1), BigPhil_72 (F1), Bipolarisk_14 (C1), Blackbrain_13 (C1), Blackdragon_12 (C1), Blexus_75 (F1), Bones_60 (A1), Bonray_14 (C1), Bread_14 (C1), Breeniome_14 (C1), Brilliant_54 (B1), Buck_43 (E), Burrough_14 (C1), Cactojaque_12 (C1), Cali_14 (C1), Capablanca_14 (C1), Caravan_16 (C1), Casbah_50 (B3), Catera_13 (C1), Cerasum_72 (F1), Chargie21_13 (C1), CharlieB_15 (C1), ChaylaJr_13 (C1), Chentzyk_51 (B3), ChickenPhender_13 (C1), Childish_52 (B1), Chomp_13 (C1), ChosenOne_46 (E), CindyLou_13 (C1), Clarkson_8 (S), Clifton_72 (F1), Coco12_75 (F1), Constella_64 (J), Corazon_7 (S), Cornie_74 (F5), Cosmolli16_53 (B1), Courthouse_75 (J), Craff_55 (B1), Cueylyss_61 (A1), DLane_79 (F1), DRBy19_83 (F1), DaddyDaniels_54 (B1), Daffodil_15 (C1), Dante_78 (F1), Darko_13 (C1), Delilah_14 (C1), Delylah_16 (C1), Demsculpinboyz_94 (F2), Derek_14 (C1), Dietrick_12 (C1), Dorothy_81 (F1), DrPhinkDaddy_14 (C1), Dreamboat_62 (A1), ET08_12 (C1), EasyJones_13 (C1), Eish_82 (F1), Elite2014_45 (E), EmToTheThree_17 (C1), EmmaElysia_13 (C1), Emma_82 (F1), Erdmann_14 (C1), EricMillard_72 (J), ErnieJ_17 (C1), Essence_13 (C1), Ewok_14 (C1), FeliMaine_8 (S), Filuzino_80 (F1), Flabslab_13 (C1), Fludd_13 (C1), FoxtrotP1_15 (C1), Fringe_56 (B1), FudgeTart_14 (C1), Gabriel_14 (C1), GageAP_62 (A1), Gamgam_13 (C1), Gervas_51 (B3), Ghost_14 (C1), Giraffe_53 (B1), Girr_75 (F1), Gizmo_15 (C1), Gonephishing_73 (J), Graduation_65 (A1), Grand2040_52 (B1), Guwapp_13 (C1), Gwilliam_54 (B1), HenryJackson_52 (B1), HighStump_54 (B1), Homines_53 (A1), Huphlepuuff_7 (S), HyRo_11 (C1), IMpilo_74 (F1), Ibhubesi_77 (F1), InigoMontoya_14 (C1), Inventum_78 (F1), Iridessa_54 (B1), Issimir_14 (C1), Izajani_14 (C1), JPickles_13 (C1), James_80 (F1), Janiyra_13 (C1), Jarcob_79 (F1), Jasper_61 (A1), Jaygup_13 (C1), Jediah_13 (C1), Jemmno_12 (C1), Jessibeth14_14 (C1), JigglyPuff_6 (C1), JoieB_8 (S), JustHall_13 (C1), KBG_62 (A1), Kahve_52 (B1), Kboogie_13 (C1), Kersh_88 (F1), Khaleesi_14 (C1), Khan1_53 (B1), Kingsley_82 (F1), Kronus_50 (B3), Kugel_63 (A1), LRRHood_14 (C1), Latch_13 (C1), Latretium_78 (F1), Legolas_54 (B1), LeiMonet_54 (B1), Leozinho_78 (F1), LifeSavor_14 (C1), Lilbit_8 (S), Lilpickle_45 (E), LittleLaf_7 (S), Littleton_14 (C1), Loanshark_14 (C1), Longacauda_53 (B1), Lumine_53 (B1), LunaBlu_82 (F1), MISSy_42 (E), MPhalcon_42 (E), Maby2021_14 (C1), MadKillah_102 (O), Mahavrat_76 (F1), Makemake_63 (A1), Mantra_76 (F1), Marsha_82 (A1), Martik_80 (F1), Maru_52 (B1), Marvin_10 (S), Matsumoto_12 (C1), McGee_13 (C1), McWolfish_14 (C1), Megamind_14 (C1), Melpomini_13 (C1), MikeLiesIn_15 (C1), MisterCuddles_76 (F1), MmasiCarm_51 (B3), Momo_13 (C1), Moonbeam_87 (F1), Morizzled23_13 (C1), Mortcellus_50 (B3), MrPhizzler_53 (B1), NEHalo_58 (A1), Naija_13 (C1), Nala_43 (E), Napoleon13_13 (C1), NedWong_14 (C1), Ngannou_13

(C1), Norm_14 (C1), Obutu_51 (B3), Ogopogo_85 (F1), Ohno789_61 (A1), OlympiaSaint_79 (F1), Ovechkin_81 (F1), ParkTD_14 (C1), Peterson_65 (A1), Phanphagia_77 (F1), Phayeta_52 (B3), PherrisBueller_60 (A1), Philus_82 (F1), Phlegm_14 (C1), Phox_14 (C1), Phusco_13 (C1), Pinkcreek_9 (C1), Pippy_75 (F1), Pivoine_13 (C1), Pleione_15 (C1), Pollywog_86 (F1), PopTart_69 (F1), Pringar_7 (S), PurduePete_14 (C1), Quasimodo_13 (C1), Rabinovich_12 (C1), Radiance_78 (F1), Rahel_13 (C1), Ramsey_83 (F1), RedBird_81 (F1), RedRaider77_10 (S), RedRaider77_8 (S), Rialto_90 (F1), Rimmer_43 (E), Rimu_56 (B1), Ringer_61 (A1), Rita1961_51 (B3), Rizal_13 (C1), Roots515_14 (C1), Ruby_73 (F1), SVoro_14 (C1), Sabbb_88 (F1), Salacia_15 (C1), Sandaddy_57 (A1), Sarma624_77 (F1), Sassafras_81 (F1), SassyB_69 (F1), ScoobyDoobyDoo_2 (C2), Scowl_62 (A1), Shauna1_78 (F1), Shelob_17 (C1), ShiaLabeouf_13 (C1), Shifa_10 (C1), Shnickers_13 (C1), Shrimp_14 (C1), SiSi_75 (F1), SilverDipper_13 (C1), SimranZ1_79 (F1), SkiPole_69 (A1), SlippinJimmy_52 (B3), SmallFry_13 (C1), Soile_53 (B1), Sorpresa_58 (A1), SpikeBT_59 (A1), Sprinklers_13 (C1), SrishMeg2525_14 (C1), StrongArm_59 (A1), StubbySaigey_13 (C1), Stubby_14 (C1), SuperGrey_79 (F1), SwainyDoc_51 (B3), TDanisky_93 (F1), Target_63 (A1), Teardrop_13 (C1), Thibault_65 (J), TinyTerror_51 (B3), TinyTim_14 (C1), Tootsieroll_77 (F1), Tortoise16_12 (C1), Trinitium_13 (C1), Turret_13 (C1), ValleyTerrace_13 (C1), VasuNzinga_9 (S), Velveteen_73 (F1), Veteran_71 (F1), Wally_13 (C1), Willis_14 (C1), Yassified_13 (C1), YemiJoy2021_14 (C1), YoungMoneyMata_13 (C1), Youngblood_44 (E), Yucca_13 (C1), Zalkecks_15 (C1), Zeenon_16 (C1), ZygoTaiga_15 (C1),

Start 83:

- Found in 32 of 458 (7.0%) of genes in pham
- Manual Annotations of this start: 32 of 424
- Called 100.0% of time when present
- Phage (with cluster) where this start called: ArcusAngelus_83 (F1), BobaPhett_81 (F1), Brocalys_71 (F1), Cabrinians_78 (F1), Chevrolet_86 (F1), Crumble_76 (F1), DaWorst_79 (F1), Donkeykong_83 (F1), Flathead_78 (F1), FreddyB_88 (F1), Gandolph_77 (F1), Gorge_80 (F1), Hegedechwinu_80 (F1), Highbury_43 (E), JalFarm20_87 (F1), Kenuha5_75 (F1), Koella_70 (F1), LastJedi_70 (F1), Lizziana_83 (F1), Mova_78 (F1), NormanBulbieJr_75 (F1), Phalconet_76 (F1), Priscilla_76 (F1), Raela_7 (S), SG4_76 (F1), Saal_78 (F1), Saints25_43 (E), StAnnes_81 (F1), SwagPigglett_82 (F1), Taj_85 (F1), Wee_84 (F1), Whatsapiecost_73 (F1),

Start 84:

- Found in 26 of 458 (5.7%) of genes in pham
- Manual Annotations of this start: 21 of 424
- Called 88.5% of time when present
- Phage (with cluster) where this start called: Ajay_76 (A1), Astraea_6 (C1), Bxz1_6 (C1), CaptainTrips_79 (F1), DirtMonster_6 (C1), Dreamboat_79 (A1), Eyeball_79 (A1), Hannaconda_73 (J), Jasper_78 (A1), KSSJEB_78 (A1), Mikro_6 (C1), MinionDave_75 (F1), MoMoMixon_5 (C1), Nidhogg_5 (C1), NoodleTree_6 (C1), PherrisBueller_78 (A1), Pio_6 (C1), QBert_6 (C1), Raid_78 (A1), Sauce_5 (C1), ScottMcG_5 (C1), Spud_6 (C1), Teodoridan_77 (A1),

Start 85:

- Found in 41 of 458 (9.0%) of genes in pham
- Manual Annotations of this start: 39 of 424
- Called 95.1% of time when present

- Phage (with cluster) where this start called: Abbysshoes_80 (A1), Ariel_79 (J), BaboJay_42 (E), Bench_44 (E), Bobby_76 (J), ChotaBhai_44 (E), Corvo_62 (A1), DoctorDiddles_44 (E), Dussy_79 (A1), Dylan_22 (O), Fushigi_75 (A1), Gyzlar_56 (A1), I3_7 (C1), Jorgensen_64 (A1), Kenmech_82 (A1), Kykar_79 (A1), Lucky2013_77 (J), Manda_46 (E), Mangeria_6 (C1), Marker_82 (F1), MaryBeth_59 (A1), MetalQZJ_58 (A1), MiaZeal_80 (J), Pat3_42 (E), Peterson_79 (A1), Petruccio_60 (A1), PhesterPhotato_83 (F1), Porcelain_79 (J), Renaud18_72 (F4), STLscum_69 (A1), SarFire_60 (A1), Simpliphy_43 (E), Squint_80 (J), Superphikiman_77 (J), Target_79 (A1), Thor_60 (A1), Tripl3t_83 (A1), Zakhe101_23 (O), Zeeculate_77 (A1),

Start 89:

- Found in 373 of 458 (81.4%) of genes in pham
- Manual Annotations of this start: 4 of 424
- Called 1.1% of time when present
- Phage (with cluster) where this start called: Kamryn_6 (C1), LittleE_79 (J), Patter_13 (C1), RoMag_5 (C1),

Start 93:

- Found in 2 of 458 (0.4%) of genes in pham
- Manual Annotations of this start: 1 of 424
- Called 50.0% of time when present
- Phage (with cluster) where this start called: Eureka_44 (E),

Start 95:

- Found in 1 of 458 (0.2%) of genes in pham
- Manual Annotations of this start: 1 of 424
- Called 100.0% of time when present
- Phage (with cluster) where this start called: Smooch_23 (O),

Start 96:

- Found in 3 of 458 (0.7%) of genes in pham
- Manual Annotations of this start: 2 of 424
- Called 66.7% of time when present
- Phage (with cluster) where this start called: DLane_80 (F1), Goku_44 (E),

Start 97:

- Found in 1 of 458 (0.2%) of genes in pham
- Manual Annotations of this start: 1 of 424
- Called 100.0% of time when present
- Phage (with cluster) where this start called: XFactor_74 (F1),

Start 101:

- Found in 2 of 458 (0.4%) of genes in pham
- Manual Annotations of this start: 2 of 424
- Called 100.0% of time when present
- Phage (with cluster) where this start called: Gaia_50 (X), Nebkiss_54 (X),

Start 102:

- Found in 9 of 458 (2.0%) of genes in pham
- Manual Annotations of this start: 1 of 424
- Called 11.1% of time when present
- Phage (with cluster) where this start called: Argie_63 (W),

Start 103:

- Found in 19 of 458 (4.1%) of genes in pham
- Manual Annotations of this start: 18 of 424
- Called 100.0% of time when present
- Phage (with cluster) where this start called: Adjutor_82 (D1), Butterscotch_82 (D1), Chill_85 (D1), DTDevon_8 (C1), Drazdys_8 (C1), Erk16_85 (D1), Giuseppe_86 (D1), InterFolia_8 (C1), JayJay_6 (C1), LinStu_7 (C1), Mopey_86 (D1), PLOT_85 (D1), Penelope2018_84 (D1), Prager_84 (D1), Sebata_7 (C1), Thoth_84 (D1), Tyke_8 (C1), Visconti_85 (D1), WaldoWhy_85 (D1),

Start 113:

- Found in 1 of 458 (0.2%) of genes in pham
- No Manual Annotations of this start.
- Called 100.0% of time when present
- Phage (with cluster) where this start called: ProMouse_60 (A1),

Start 115:

- Found in 1 of 458 (0.2%) of genes in pham
- Manual Annotations of this start: 1 of 424
- Called 100.0% of time when present
- Phage (with cluster) where this start called: Tonenili_20 (C1),

Start 116:

- Found in 9 of 458 (2.0%) of genes in pham
- Manual Annotations of this start: 8 of 424
- Called 88.9% of time when present
- Phage (with cluster) where this start called: Che8_92 (F1), Fancypants_92 (F1), Koella_74 (F1), Marker_91 (F1), NormanBulbieJr_80 (F1), Priscilla_82 (F1), Spartacus_85 (F1), Whouxphf_84 (F1),

Summary by clusters:

There are 17 clusters represented in this pham: F1, F2, E, F5, F, F4, J, O, A1, S, B1, W, B3, X, C1, C2, D1,

Info for manual annotations of cluster A1:

- Start number 82 was manually annotated 25 times for cluster A1.
- Start number 84 was manually annotated 6 times for cluster A1.
- Start number 85 was manually annotated 18 times for cluster A1.

Info for manual annotations of cluster B1:

- Start number 82 was manually annotated 16 times for cluster B1.

Info for manual annotations of cluster B3:

- Start number 82 was manually annotated 8 times for cluster B3.

Info for manual annotations of cluster C1:

- Start number 59 was manually annotated 15 times for cluster C1.
- Start number 81 was manually annotated 1 time for cluster C1.
- Start number 82 was manually annotated 126 times for cluster C1.
- Start number 84 was manually annotated 12 times for cluster C1.
- Start number 85 was manually annotated 2 times for cluster C1.

- Start number 89 was manually annotated 3 times for cluster C1.
- Start number 103 was manually annotated 6 times for cluster C1.
- Start number 115 was manually annotated 1 time for cluster C1.

Info for manual annotations of cluster C2:

- Start number 82 was manually annotated 1 time for cluster C2.

Info for manual annotations of cluster D1:

- Start number 103 was manually annotated 12 times for cluster D1.

Info for manual annotations of cluster E:

- Start number 59 was manually annotated 1 time for cluster E.
- Start number 71 was manually annotated 1 time for cluster E.
- Start number 82 was manually annotated 9 times for cluster E.
- Start number 83 was manually annotated 2 times for cluster E.
- Start number 85 was manually annotated 7 times for cluster E.
- Start number 93 was manually annotated 1 time for cluster E.
- Start number 96 was manually annotated 1 time for cluster E.

Info for manual annotations of cluster F1:

- Start number 57 was manually annotated 1 time for cluster F1.
- Start number 74 was manually annotated 1 time for cluster F1.
- Start number 75 was manually annotated 1 time for cluster F1.
- Start number 79 was manually annotated 1 time for cluster F1.
- Start number 80 was manually annotated 1 time for cluster F1.
- Start number 81 was manually annotated 7 times for cluster F1.
- Start number 82 was manually annotated 52 times for cluster F1.
- Start number 83 was manually annotated 29 times for cluster F1.
- Start number 84 was manually annotated 2 times for cluster F1.
- Start number 85 was manually annotated 2 times for cluster F1.
- Start number 96 was manually annotated 1 time for cluster F1.
- Start number 97 was manually annotated 1 time for cluster F1.
- Start number 116 was manually annotated 8 times for cluster F1.

Info for manual annotations of cluster F2:

- Start number 81 was manually annotated 3 times for cluster F2.
- Start number 82 was manually annotated 2 times for cluster F2.

Info for manual annotations of cluster F4:

- Start number 81 was manually annotated 1 time for cluster F4.
- Start number 85 was manually annotated 1 time for cluster F4.

Info for manual annotations of cluster F5:

- Start number 82 was manually annotated 1 time for cluster F5.

Info for manual annotations of cluster J:

- Start number 82 was manually annotated 4 times for cluster J.
- Start number 84 was manually annotated 1 time for cluster J.
- Start number 85 was manually annotated 7 times for cluster J.
- Start number 89 was manually annotated 1 time for cluster J.

Info for manual annotations of cluster O:

- Start number 82 was manually annotated 1 time for cluster O.
- Start number 85 was manually annotated 2 times for cluster O.
- Start number 95 was manually annotated 1 time for cluster O.

Info for manual annotations of cluster S:

- Start number 80 was manually annotated 2 times for cluster S.
- Start number 82 was manually annotated 12 times for cluster S.
- Start number 83 was manually annotated 1 time for cluster S.

Info for manual annotations of cluster W:

- Start number 102 was manually annotated 1 time for cluster W.

Info for manual annotations of cluster X:

- Start number 101 was manually annotated 2 times for cluster X.

Gene Information:

Gene: AFIS_57 Start: 39716, Stop: 39357, Start Num: 82

Candidate Starts for AFIS_57:

(8, 39917), (50, 39773), (51, 39770), (Start: 82 @39716 has 257 MA's), (Start: 89 @39704 has 4 MA's), (160, 39569), (167, 39533), (170, 39527), (245, 39395),

Gene: Abbysshoes_80 Start: 47965, Stop: 47543, Start Num: 85

Candidate Starts for Abbysshoes_80:

(Start: 85 @47965 has 39 MA's), (Start: 89 @47953 has 4 MA's), (160, 47797), (184, 47725), (196, 47701), (230, 47629), (247, 47566),

Gene: Ablatia_12 Start: 3972, Stop: 4337, Start Num: 82

Candidate Starts for Ablatia_12:

(Start: 82 @3972 has 257 MA's), (Start: 89 @3987 has 4 MA's), (160, 4122), (187, 4200), (191, 4212), (193, 4215), (247, 4308),

Gene: Ading_13 Start: 3949, Stop: 4314, Start Num: 82

Candidate Starts for Ading_13:

(Start: 82 @3949 has 257 MA's), (Start: 89 @3964 has 4 MA's), (160, 4099), (187, 4177), (191, 4189), (193, 4192), (247, 4285),

Gene: Adjutor_82 Start: 59655, Stop: 60050, Start Num: 103

Candidate Starts for Adjutor_82:

(39, 59532), (Start: 103 @59655 has 18 MA's), (133, 59730), (157, 59802), (160, 59835), (167, 59871), (170, 59877), (245, 60009), (247, 60027),

Gene: Adlitam_13 Start: 3966, Stop: 4331, Start Num: 82

Candidate Starts for Adlitam_13:

(Start: 82 @3966 has 257 MA's), (Start: 89 @3981 has 4 MA's), (160, 4116), (187, 4194), (191, 4206), (193, 4209), (247, 4302),

Gene: Ajay_76 Start: 46873, Stop: 46502, Start Num: 84

Candidate Starts for Ajay_76:

(Start: 84 @46873 has 21 MA's), (Start: 89 @46861 has 4 MA's), (105, 46825), (141, 46783), (153, 46759), (160, 46717), (191, 46627), (193, 46624), (242, 46561), (248, 46525),

Gene: Alice_12 Start: 4384, Stop: 4734, Start Num: 82

Candidate Starts for Alice_12:

(Start: 82 @4384 has 257 MA's), (Start: 89 @4399 has 4 MA's), (160, 4519), (187, 4597), (191, 4609), (193, 4612), (247, 4705),

Gene: Amao_43 Start: 35234, Stop: 34809, Start Num: 73

Candidate Starts for Amao_43:

(69, 35246), (73, 35234), (Start: 85 @35225 has 39 MA's), (Start: 89 @35213 has 4 MA's), (160, 35039), (197, 34937), (214, 34895),

Gene: Amataga_13 Start: 3970, Stop: 4335, Start Num: 82

Candidate Starts for Amataga_13:

(Start: 82 @3970 has 257 MA's), (Start: 89 @3985 has 4 MA's), (160, 4120), (187, 4198), (191, 4210), (193, 4213), (247, 4306),

Gene: ArcherS7_13 Start: 3966, Stop: 4331, Start Num: 82

Candidate Starts for ArcherS7_13:

(Start: 82 @3966 has 257 MA's), (Start: 89 @3981 has 4 MA's), (160, 4116), (187, 4194), (191, 4206), (193, 4209), (247, 4302),

Gene: ArcusAngelus_83 Start: 49676, Stop: 50101, Start Num: 83

Candidate Starts for ArcusAngelus_83:

(Start: 83 @49676 has 32 MA's), (122, 49751), (155, 49823), (160, 49856), (184, 49928), (192, 49952), (230, 50024), (247, 50087),

Gene: Argie_63 Start: 48115, Stop: 48504, Start Num: 102

Candidate Starts for Argie_63:

(65, 48037), (70, 48046), (78, 48064), (90, 48085), (92, 48091), (94, 48100), (Start: 102 @48115 has 1 MA's), (124, 48166), (127, 48172), (128, 48175), (137, 48193), (138, 48196), (139, 48199), (147, 48223), (167, 48325), (170, 48331), (245, 48463),

Gene: Ariel_79 Start: 48566, Stop: 48168, Start Num: 85

Candidate Starts for Ariel_79:

(Start: 85 @48566 has 39 MA's), (Start: 89 @48554 has 4 MA's), (160, 48398), (188, 48314), (190, 48308), (191, 48305), (242, 48221),

Gene: Astraea_6 Start: 1759, Stop: 2151, Start Num: 84

Candidate Starts for Astraea_6:

(Start: 84 @1759 has 21 MA's), (Start: 89 @1771 has 4 MA's), (114, 1819), (117, 1825), (149, 1888), (160, 1942), (187, 2020), (191, 2032), (193, 2035),

Gene: Atlantean_13 Start: 3970, Stop: 4335, Start Num: 82

Candidate Starts for Atlantean_13:

(Start: 82 @3970 has 257 MA's), (Start: 89 @3985 has 4 MA's), (160, 4120), (187, 4198), (191, 4210), (193, 4213), (247, 4306),

Gene: Aubs_80 Start: 49176, Stop: 49556, Start Num: 81

Candidate Starts for Aubs_80:

(Start: 81 @49176 has 12 MA's), (Start: 89 @49191 has 4 MA's), (190, 49398), (193, 49404), (204, 49428), (247, 49527),

Gene: Audrick_14 Start: 3949, Stop: 4314, Start Num: 82

Candidate Starts for Audrick_14:

(Start: 82 @3949 has 257 MA's), (Start: 89 @3964 has 4 MA's), (160, 4099), (187, 4177), (191, 4189), (193, 4192), (247, 4285),

Gene: Ava3_15 Start: 5050, Stop: 5400, Start Num: 82

Candidate Starts for Ava3_15:

(Start: 82 @5050 has 257 MA's), (Start: 89 @5065 has 4 MA's), (160, 5185), (187, 5263), (191, 5275), (193, 5278), (247, 5371),

Gene: Avani_86 Start: 46087, Stop: 46437, Start Num: 82

Candidate Starts for Avani_86:

(Start: 82 @46087 has 257 MA's), (Start: 89 @46102 has 4 MA's), (160, 46237), (164, 46267), (180, 46303), (223, 46354),

Gene: BaboJay_42 Start: 35493, Stop: 35068, Start Num: 85

Candidate Starts for BaboJay_42:

(69, 35514), (73, 35502), (Start: 85 @35493 has 39 MA's), (Start: 89 @35481 has 4 MA's), (160, 35307), (199, 35205),

Gene: Babyland_13 Start: 3970, Stop: 4335, Start Num: 82

Candidate Starts for Babyland_13:

(Start: 82 @3970 has 257 MA's), (Start: 89 @3985 has 4 MA's), (160, 4120), (187, 4198), (191, 4210), (193, 4213), (247, 4306),

Gene: BackyardAgain_12 Start: 3966, Stop: 4331, Start Num: 82

Candidate Starts for BackyardAgain_12:

(Start: 82 @3966 has 257 MA's), (Start: 89 @3981 has 4 MA's), (160, 4116), (187, 4194), (191, 4206), (193, 4209), (247, 4302),

Gene: BadAgartude_14 Start: 4738, Stop: 5088, Start Num: 82

Candidate Starts for BadAgartude_14:

(Start: 82 @4738 has 257 MA's), (Start: 89 @4753 has 4 MA's), (160, 4873), (187, 4951), (191, 4963), (193, 4966), (247, 5059),

Gene: Bagrid_72 Start: 50124, Stop: 49711, Start Num: 82

Candidate Starts for Bagrid_72:

(Start: 82 @50124 has 257 MA's), (Start: 89 @50112 has 4 MA's), (131, 50028), (140, 50010), (160, 49932), (167, 49896), (170, 49890), (245, 49758),

Gene: Balomoji_45 Start: 36485, Stop: 36057, Start Num: 59

Candidate Starts for Balomoji_45:

(47, 36506), (54, 36494), (Start: 59 @36485 has 16 MA's), (68, 36473), (145, 36335), (150, 36323), (160, 36263), (247, 36086),

Gene: BananaFence_14 Start: 4971, Stop: 5336, Start Num: 82

Candidate Starts for BananaFence_14:

(Start: 82 @4971 has 257 MA's), (Start: 89 @4986 has 4 MA's), (160, 5121), (187, 5199), (191, 5211), (193, 5214), (247, 5307),

Gene: Bangla1971_13 Start: 3966, Stop: 4331, Start Num: 82

Candidate Starts for Bangla1971_13:

(Start: 82 @3966 has 257 MA's), (Start: 89 @3981 has 4 MA's), (160, 4116), (187, 4194), (191, 4206), (193, 4209), (247, 4302),

Gene: Basquiat_13 Start: 3951, Stop: 4316, Start Num: 82

Candidate Starts for Basquiat_13:

(Start: 82 @3951 has 257 MA's), (Start: 89 @3966 has 4 MA's), (160, 4101), (187, 4179), (191, 4191), (193, 4194), (247, 4287),

Gene: Batiatus_78 Start: 48266, Stop: 48646, Start Num: 81

Candidate Starts for Batiatus_78:

(Start: 81 @48266 has 12 MA's), (Start: 89 @48281 has 4 MA's), (160, 48401), (190, 48488), (193, 48494), (204, 48518), (247, 48617),

Gene: BeanWater_5 Start: 2594, Stop: 3034, Start Num: 59

Candidate Starts for BeanWater_5:

(Start: 59 @2594 has 16 MA's), (68, 2606), (136, 2726), (160, 2816), (172, 2858), (225, 2954), (235, 2978),

Gene: Beatrix_60 Start: 41870, Stop: 41490, Start Num: 82

Candidate Starts for Beatrix_60:

(8, 42071), (50, 41927), (51, 41924), (Start: 82 @41870 has 257 MA's), (Start: 89 @41858 has 4 MA's), (160, 41702), (167, 41666), (170, 41660), (245, 41528),

Gene: Beelzebub_9 Start: 2804, Stop: 3181, Start Num: 82

Candidate Starts for Beelzebub_9:

(Start: 82 @2804 has 257 MA's), (Start: 89 @2816 has 4 MA's), (160, 2972), (187, 3050), (191, 3062), (193, 3065),

Gene: Belieber_12 Start: 3970, Stop: 4335, Start Num: 82

Candidate Starts for Belieber_12:

(Start: 82 @3970 has 257 MA's), (Start: 89 @3985 has 4 MA's), (160, 4120), (187, 4198), (191, 4210), (193, 4213), (247, 4306),

Gene: Ben11_50 Start: 45429, Stop: 44986, Start Num: 82

Candidate Starts for Ben11_50:

(Start: 82 @45429 has 257 MA's), (Start: 89 @45417 has 4 MA's), (139, 45297), (151, 45267), (160, 45207), (167, 45171), (170, 45165), (245, 45033),

Gene: Bench_44 Start: 35114, Stop: 34752, Start Num: 85

Candidate Starts for Bench_44:

(Start: 85 @35114 has 39 MA's), (Start: 89 @35102 has 4 MA's), (160, 34982), (199, 34880), (247, 34775),

Gene: Bexan_58 Start: 41649, Stop: 41269, Start Num: 82

Candidate Starts for Bexan_58:

(50, 41706), (51, 41703), (Start: 82 @41649 has 257 MA's), (Start: 89 @41637 has 4 MA's), (160, 41481), (167, 41445), (170, 41439), (245, 41307),

Gene: BigPhil_72 Start: 44249, Stop: 44626, Start Num: 82

Candidate Starts for BigPhil_72:

(Start: 82 @44249 has 257 MA's), (Start: 89 @44264 has 4 MA's), (160, 44420), (173, 44462), (210, 44528), (212, 44531), (247, 44600),

Gene: Bigswole_5 Start: 1613, Stop: 2053, Start Num: 59

Candidate Starts for Bigswole_5:

(Start: 59 @1613 has 16 MA's), (68, 1625), (136, 1745), (160, 1835), (172, 1877), (225, 1973), (235, 1997),

Gene: Bipolarisk_14 Start: 5050, Stop: 5400, Start Num: 82

Candidate Starts for Bipolarisk_14:

(Start: 82 @5050 has 257 MA's), (Start: 89 @5065 has 4 MA's), (160, 5185), (187, 5263), (191, 5275), (193, 5278), (247, 5371),

Gene: Blackbrain_13 Start: 3966, Stop: 4331, Start Num: 82

Candidate Starts for Blackbrain_13:

(Start: 82 @3966 has 257 MA's), (Start: 89 @3981 has 4 MA's), (160, 4116), (187, 4194), (191, 4206), (193, 4209), (247, 4302),

Gene: Blackdragon_5 Start: 1616, Stop: 2056, Start Num: 59

Candidate Starts for Blackdragon_5:

(Start: 59 @1616 has 16 MA's), (68, 1628), (136, 1748), (160, 1838), (172, 1880), (225, 1976), (235, 2000),

Gene: Blackdragon_12 Start: 4007, Stop: 4381, Start Num: 82

Candidate Starts for Blackdragon_12:

(Start: 82 @4007 has 257 MA's), (Start: 89 @4022 has 4 MA's), (105, 4058), (141, 4100), (153, 4124), (160, 4166), (191, 4256), (193, 4259), (247, 4352),

Gene: Blarby_87 Start: 46989, Stop: 47345, Start Num: 81

Candidate Starts for Blarby_87:

(Start: 81 @46989 has 12 MA's), (Start: 89 @47004 has 4 MA's), (160, 47124), (244, 47295), (247, 47316),

Gene: Blexus_75 Start: 48431, Stop: 48811, Start Num: 82

Candidate Starts for Blexus_75:

(Start: 82 @48431 has 257 MA's), (Start: 89 @48446 has 4 MA's), (123, 48506), (157, 48578), (160, 48611), (247, 48788),

Gene: BobaPhett_81 Start: 50730, Stop: 51155, Start Num: 83

Candidate Starts for BobaPhett_81:

(Start: 83 @50730 has 32 MA's), (Start: 89 @50745 has 4 MA's), (160, 50925), (188, 51009), (190, 51015), (191, 51018), (242, 51102),

Gene: Bobby_76 Start: 51549, Stop: 51166, Start Num: 85

Candidate Starts for Bobby_76:

(38, 51630), (61, 51588), (62, 51585), (Start: 85 @51549 has 39 MA's), (Start: 89 @51537 has 4 MA's), (123, 51477), (157, 51405), (160, 51372), (186, 51312), (192, 51297), (203, 51273), (226, 51240),

Gene: Bobi_85 Start: 50553, Stop: 50930, Start Num: 81

Candidate Starts for Bobi_85:

(Start: 81 @50553 has 12 MA's), (Start: 89 @50568 has 4 MA's), (160, 50688), (190, 50775), (193, 50781), (204, 50805), (236, 50868), (247, 50907),

Gene: Bones_60 Start: 41965, Stop: 41585, Start Num: 82

Candidate Starts for Bones_60:

(6, 42175), (8, 42166), (50, 42022), (51, 42019), (Start: 82 @41965 has 257 MA's), (Start: 89 @41953 has 4 MA's), (160, 41797), (167, 41761), (170, 41755), (245, 41623),

Gene: Bonray_14 Start: 5044, Stop: 5394, Start Num: 82

Candidate Starts for Bonray_14:

(Start: 82 @5044 has 257 MA's), (Start: 89 @5059 has 4 MA's), (160, 5179), (187, 5257), (191, 5269), (193, 5272), (247, 5365),

Gene: Bread_14 Start: 5050, Stop: 5400, Start Num: 82

Candidate Starts for Bread_14:

(Start: 82 @5050 has 257 MA's), (Start: 89 @5065 has 4 MA's), (160, 5185), (187, 5263), (191, 5275), (193, 5278), (247, 5371),

Gene: Breeniome_14 Start: 3966, Stop: 4331, Start Num: 82

Candidate Starts for Breeniome_14:

(Start: 82 @3966 has 257 MA's), (Start: 89 @3981 has 4 MA's), (160, 4116), (187, 4194), (191, 4206), (193, 4209), (247, 4302),

Gene: Brilliant_54 Start: 47338, Stop: 46895, Start Num: 82

Candidate Starts for Brilliant_54:

(Start: 82 @47338 has 257 MA's), (Start: 89 @47326 has 4 MA's), (139, 47206), (151, 47176), (160, 47116), (167, 47080), (170, 47074), (245, 46942),

Gene: Brocalys_71 Start: 46210, Stop: 46635, Start Num: 83

Candidate Starts for Brocalys_71:

(Start: 83 @46210 has 32 MA's), (Start: 89 @46225 has 4 MA's), (160, 46405), (188, 46489), (190, 46495), (191, 46498), (242, 46582),

Gene: Buck_43 Start: 35755, Stop: 35318, Start Num: 82

Candidate Starts for Buck_43:

(43, 35827), (Start: 82 @35755 has 257 MA's), (Start: 89 @35743 has 4 MA's), (151, 35593), (160, 35533), (167, 35497), (170, 35491), (245, 35359),

Gene: Burrough_14 Start: 5050, Stop: 5400, Start Num: 82

Candidate Starts for Burrough_14:

(Start: 82 @5050 has 257 MA's), (Start: 89 @5065 has 4 MA's), (160, 5185), (187, 5263), (191, 5275), (193, 5278), (247, 5371),

Gene: Butterscotch_82 Start: 59706, Stop: 60101, Start Num: 103

Candidate Starts for Butterscotch_82:

(39, 59583), (Start: 103 @59706 has 18 MA's), (133, 59781), (157, 59853), (160, 59886), (167, 59922), (170, 59928), (245, 60060), (247, 60078),

Gene: BuzzLyseyear_87 Start: 51492, Stop: 51857, Start Num: 79

Candidate Starts for BuzzLyseyear_87:

(Start: 79 @51492 has 1 MA's), (Start: 89 @51507 has 4 MA's), (160, 51642), (167, 51678), (170, 51684), (245, 51816),

Gene: Bxz1_6 Start: 1759, Stop: 2151, Start Num: 84

Candidate Starts for Bxz1_6:

(Start: 84 @1759 has 21 MA's), (Start: 89 @1771 has 4 MA's), (114, 1819), (117, 1825), (149, 1888), (160, 1942), (187, 2020), (191, 2032), (193, 2035),

Gene: Cabrinians_78 Start: 48130, Stop: 48555, Start Num: 83

Candidate Starts for Cabrinians_78:

(Start: 83 @48130 has 32 MA's), (Start: 89 @48145 has 4 MA's), (160, 48325), (188, 48409), (190, 48415), (191, 48418), (242, 48502),

Gene: Cactojaque_12 Start: 3900, Stop: 4265, Start Num: 82

Candidate Starts for Cactojaque_12:

(Start: 82 @3900 has 257 MA's), (Start: 89 @3915 has 4 MA's), (160, 4050), (187, 4128), (191, 4140), (193, 4143), (247, 4236),

Gene: Cali_14 Start: 5699, Stop: 6064, Start Num: 82

Candidate Starts for Cali_14:

(Start: 82 @5699 has 257 MA's), (Start: 89 @5714 has 4 MA's), (91, 5723), (160, 5849), (187, 5927), (191, 5939), (193, 5942), (247, 6035),

Gene: Cali_6 Start: 2751, Stop: 3191, Start Num: 59

Candidate Starts for Cali_6:

(Start: 59 @2751 has 16 MA's), (68, 2763), (136, 2883), (160, 2973), (172, 3015), (225, 3111), (235, 3135),

Gene: Capablanca_14 Start: 5050, Stop: 5415, Start Num: 82

Candidate Starts for Capablanca_14:

(Start: 82 @5050 has 257 MA's), (Start: 89 @5065 has 4 MA's), (160, 5200), (187, 5278), (191, 5290), (193, 5293), (247, 5386),

Gene: Caprice_8 Start: 2539, Stop: 2922, Start Num: 77

Candidate Starts for Caprice_8:

(77, 2539), (Start: 89 @2554 has 4 MA's), (160, 2710), (167, 2746), (170, 2752), (245, 2884),

Gene: CaptainTrips_79 Start: 47890, Stop: 48285, Start Num: 84

Candidate Starts for CaptainTrips_79:

(Start: 84 @47890 has 21 MA's), (Start: 89 @47902 has 4 MA's), (160, 48037), (182, 48115), (206, 48166), (221, 48190), (232, 48208), (238, 48223), (247, 48262),

Gene: Caravan_16 Start: 5077, Stop: 5427, Start Num: 82

Candidate Starts for Caravan_16:

(Start: 82 @5077 has 257 MA's), (Start: 89 @5092 has 4 MA's), (160, 5212), (187, 5290), (191, 5302), (193, 5305), (247, 5398),

Gene: Casbah_50 Start: 45459, Stop: 45016, Start Num: 82

Candidate Starts for Casbah_50:

(Start: 82 @45459 has 257 MA's), (Start: 89 @45447 has 4 MA's), (139, 45327), (151, 45297), (160, 45237), (167, 45201), (170, 45195), (245, 45063),

Gene: Catera_13 Start: 3970, Stop: 4335, Start Num: 82

Candidate Starts for Catera_13:

(Start: 82 @3970 has 257 MA's), (Start: 89 @3985 has 4 MA's), (160, 4120), (187, 4198), (191, 4210), (193, 4213), (247, 4306),

Gene: Cerasum_72 Start: 44267, Stop: 44644, Start Num: 82

Candidate Starts for Cerasum_72:

(Start: 82 @44267 has 257 MA's), (Start: 89 @44282 has 4 MA's), (160, 44438), (173, 44480), (210, 44546), (212, 44549), (247, 44618),

Gene: Charge21_13 Start: 3951, Stop: 4316, Start Num: 82

Candidate Starts for Chargie21_13:

(Start: 82 @3951 has 257 MA's), (Start: 89 @3966 has 4 MA's), (160, 4101), (187, 4179), (191, 4191), (193, 4194), (247, 4287),

Gene: CharlieB_5 Start: 1612, Stop: 2052, Start Num: 59

Candidate Starts for CharlieB_5:

(Start: 59 @1612 has 16 MA's), (68, 1624), (136, 1744), (160, 1834), (172, 1876), (225, 1972), (235, 1996),

Gene: CharlieB_15 Start: 4563, Stop: 4913, Start Num: 82

Candidate Starts for CharlieB_15:

(Start: 82 @4563 has 257 MA's), (Start: 89 @4578 has 4 MA's), (160, 4698), (187, 4776), (191, 4788), (193, 4791), (247, 4884),

Gene: ChaylaJr_13 Start: 3993, Stop: 4358, Start Num: 82

Candidate Starts for ChaylaJr_13:

(Start: 82 @3993 has 257 MA's), (Start: 89 @4008 has 4 MA's), (160, 4143), (187, 4221), (191, 4233), (193, 4236), (247, 4329),

Gene: Che8_92 Start: 51445, Stop: 51828, Start Num: 116

Candidate Starts for Che8_92:

(36, 51271), (37, 51280), (49, 51304), (60, 51322), (Start: 102 @51415 has 1 MA's), (107, 51424), (Start: 116 @51445 has 8 MA's), (169, 51631), (183, 51661), (199, 51697), (231, 51748),

Gene: Chentzyk_51 Start: 45971, Stop: 45528, Start Num: 82

Candidate Starts for Chentzyk_51:

(Start: 82 @45971 has 257 MA's), (Start: 89 @45959 has 4 MA's), (139, 45839), (151, 45809), (160, 45749), (167, 45713), (170, 45707), (245, 45575),

Gene: Chevrolet_86 Start: 49677, Stop: 50102, Start Num: 83

Candidate Starts for Chevrolet_86:

(Start: 83 @49677 has 32 MA's), (122, 49752), (155, 49824), (160, 49857), (184, 49929), (192, 49953), (230, 50025), (247, 50088),

Gene: ChickenPhender_13 Start: 3951, Stop: 4316, Start Num: 82

Candidate Starts for ChickenPhender_13:

(Start: 82 @3951 has 257 MA's), (Start: 89 @3966 has 4 MA's), (160, 4101), (187, 4179), (191, 4191), (193, 4194), (247, 4287),

Gene: Childish_52 Start: 47365, Stop: 46922, Start Num: 82

Candidate Starts for Childish_52:

(Start: 82 @47365 has 257 MA's), (Start: 89 @47353 has 4 MA's), (139, 47233), (151, 47203), (160, 47143), (167, 47107), (170, 47101), (245, 46969),

Gene: Chill_85 Start: 59683, Stop: 60078, Start Num: 103

Candidate Starts for Chill_85:

(39, 59560), (Start: 103 @59683 has 18 MA's), (133, 59758), (157, 59830), (160, 59863), (167, 59899), (170, 59905), (245, 60037), (247, 60055),

Gene: Chomp_13 Start: 3970, Stop: 4335, Start Num: 82

Candidate Starts for Chomp_13:

(Start: 82 @3970 has 257 MA's), (Start: 89 @3985 has 4 MA's), (160, 4120), (187, 4198), (191, 4210), (193, 4213), (247, 4306),

Gene: ChosenOne_46 Start: 35277, Stop: 34882, Start Num: 82
Candidate Starts for ChosenOne_46:
(26, 35379), (29, 35373), (41, 35343), (Start: 82 @35277 has 257 MA's), (Start: 89 @35265 has 4 MA's), (160, 35109), (166, 35076), (175, 35055), (219, 34989), (253, 34905),

Gene: ChotaBhai_44 Start: 35156, Stop: 34737, Start Num: 85
Candidate Starts for ChotaBhai_44:
(69, 35177), (73, 35165), (Start: 85 @35156 has 39 MA's), (Start: 89 @35144 has 4 MA's), (160, 34970), (199, 34868),

Gene: CindyLou_13 Start: 3970, Stop: 4335, Start Num: 82
Candidate Starts for CindyLou_13:
(Start: 82 @3970 has 257 MA's), (Start: 89 @3985 has 4 MA's), (160, 4120), (187, 4198), (191, 4210), (193, 4213), (247, 4306),

Gene: Clarkson_8 Start: 2580, Stop: 2957, Start Num: 82
Candidate Starts for Clarkson_8:
(Start: 82 @2580 has 257 MA's), (Start: 89 @2592 has 4 MA's), (160, 2748), (187, 2826), (191, 2838), (193, 2841),

Gene: Clifton_72 Start: 46816, Stop: 47196, Start Num: 82
Candidate Starts for Clifton_72:
(Start: 82 @46816 has 257 MA's), (Start: 89 @46831 has 4 MA's), (160, 46987), (187, 47065), (191, 47077), (193, 47080), (247, 47173),

Gene: Coco12_75 Start: 48324, Stop: 48701, Start Num: 82
Candidate Starts for Coco12_75:
(Start: 82 @48324 has 257 MA's), (Start: 89 @48339 has 4 MA's), (160, 48495), (173, 48537), (210, 48603), (212, 48606), (247, 48675),

Gene: Constella_64 Start: 46367, Stop: 45930, Start Num: 82
Candidate Starts for Constella_64:
(Start: 82 @46367 has 257 MA's), (151, 46205), (152, 46202), (160, 46145), (167, 46109), (170, 46103), (245, 45971),

Gene: Corazon_7 Start: 2530, Stop: 2910, Start Num: 82
Candidate Starts for Corazon_7:
(Start: 82 @2530 has 257 MA's), (Start: 89 @2545 has 4 MA's), (160, 2701), (187, 2779), (191, 2791), (193, 2794),

Gene: Cornie_74 Start: 46648, Stop: 46998, Start Num: 82
Candidate Starts for Cornie_74:
(Start: 82 @46648 has 257 MA's), (Start: 89 @46663 has 4 MA's), (187, 46861), (191, 46873), (193, 46876), (247, 46969),

Gene: Corvo_62 Start: 41848, Stop: 41459, Start Num: 85
Candidate Starts for Corvo_62:
(10, 42049), (52, 41905), (55, 41902), (Start: 85 @41848 has 39 MA's), (Start: 89 @41836 has 4 MA's), (154, 41749), (160, 41716), (184, 41638), (192, 41614), (230, 41542),

Gene: Cosmolli16_53 Start: 47545, Stop: 47198, Start Num: 82
Candidate Starts for Cosmolli16_53:

(Start: 82 @47545 has 257 MA's), (Start: 89 @47533 has 4 MA's), (160, 47413), (167, 47377), (170, 47371), (245, 47239), (247, 47221),

Gene: Courthouse_75 Start: 48166, Stop: 47780, Start Num: 82

Candidate Starts for Courthouse_75:

(Start: 82 @48166 has 257 MA's), (Start: 89 @48154 has 4 MA's), (160, 47998), (167, 47962), (170, 47956), (245, 47824),

Gene: Craff_55 Start: 47790, Stop: 47347, Start Num: 82

Candidate Starts for Craff_55:

(Start: 82 @47790 has 257 MA's), (Start: 89 @47778 has 4 MA's), (139, 47658), (151, 47628), (160, 47568), (167, 47532), (170, 47526), (245, 47394),

Gene: Crumble_76 Start: 44855, Stop: 45280, Start Num: 83

Candidate Starts for Crumble_76:

(Start: 83 @44855 has 32 MA's), (Start: 89 @44870 has 4 MA's), (160, 45050), (188, 45134), (190, 45140), (191, 45143), (242, 45227),

Gene: Cueyllyss_61 Start: 42165, Stop: 41785, Start Num: 82

Candidate Starts for Cueyllyss_61:

(8, 42366), (50, 42222), (51, 42219), (Start: 82 @42165 has 257 MA's), (Start: 89 @42153 has 4 MA's), (160, 41997), (167, 41961), (170, 41955), (245, 41823),

Gene: DLane_79 Start: 49141, Stop: 49515, Start Num: 82

Candidate Starts for DLane_79:

(Start: 82 @49141 has 257 MA's), (Start: 89 @49156 has 4 MA's), (160, 49291), (178, 49360), (223, 49441),

Gene: DLane_80 Start: 49512, Stop: 49868, Start Num: 96

Candidate Starts for DLane_80:

(Start: 96 @49512 has 2 MA's), (106, 49524), (160, 49644), (172, 49686), (225, 49782), (247, 49839),

Gene: DRBy19_83 Start: 50545, Stop: 50925, Start Num: 82

Candidate Starts for DRBy19_83:

(Start: 82 @50545 has 257 MA's), (Start: 89 @50560 has 4 MA's), (160, 50716), (187, 50794), (191, 50806), (193, 50809), (247, 50902),

Gene: DTDevon_8 Start: 2464, Stop: 2820, Start Num: 103

Candidate Starts for DTDevon_8:

(Start: 103 @2464 has 18 MA's), (108, 2476), (122, 2503), (146, 2548), (160, 2611), (187, 2689), (191, 2701), (193, 2704),

Gene: DaWorst_79 Start: 47793, Stop: 48188, Start Num: 83

Candidate Starts for DaWorst_79:

(Start: 83 @47793 has 32 MA's), (Start: 89 @47808 has 4 MA's), (160, 47928), (184, 48000), (192, 48024), (230, 48096), (249, 48168),

Gene: DaddyDaniels_54 Start: 47322, Stop: 46879, Start Num: 82

Candidate Starts for DaddyDaniels_54:

(Start: 82 @47322 has 257 MA's), (Start: 89 @47310 has 4 MA's), (139, 47190), (151, 47160), (160, 47100), (167, 47064), (170, 47058), (245, 46926),

Gene: Daffodil_15 Start: 5050, Stop: 5400, Start Num: 82

Candidate Starts for Daffodil_15:

(Start: 82 @5050 has 257 MA's), (Start: 89 @5065 has 4 MA's), (160, 5185), (187, 5263), (191, 5275), (193, 5278), (247, 5371),

Gene: Dante_78 Start: 50103, Stop: 50483, Start Num: 82

Candidate Starts for Dante_78:

(Start: 82 @50103 has 257 MA's), (Start: 89 @50118 has 4 MA's), (123, 50178), (157, 50250), (160, 50283), (247, 50460),

Gene: Darko_13 Start: 4940, Stop: 5305, Start Num: 82

Candidate Starts for Darko_13:

(Start: 82 @4940 has 257 MA's), (Start: 89 @4955 has 4 MA's), (160, 5090), (187, 5168), (191, 5180), (193, 5183), (247, 5276),

Gene: Delilah_14 Start: 5050, Stop: 5400, Start Num: 82

Candidate Starts for Delilah_14:

(Start: 82 @5050 has 257 MA's), (Start: 89 @5065 has 4 MA's), (160, 5185), (187, 5263), (191, 5275), (193, 5278), (247, 5371),

Gene: Delylah_16 Start: 5077, Stop: 5427, Start Num: 82

Candidate Starts for Delylah_16:

(Start: 82 @5077 has 257 MA's), (Start: 89 @5092 has 4 MA's), (160, 5212), (187, 5290), (191, 5302), (193, 5305), (247, 5398),

Gene: Demsculpinboyz_94 Start: 48157, Stop: 48546, Start Num: 82

Candidate Starts for Demsculpinboyz_94:

(27, 48034), (67, 48127), (Start: 71 @48136 has 1 MA's), (Start: 82 @48157 has 257 MA's), (160, 48325), (167, 48361), (170, 48367), (245, 48499),

Gene: Derek_14 Start: 3966, Stop: 4331, Start Num: 82

Candidate Starts for Derek_14:

(Start: 82 @3966 has 257 MA's), (Start: 89 @3981 has 4 MA's), (160, 4116), (187, 4194), (191, 4206), (193, 4209), (247, 4302),

Gene: Dietrick_12 Start: 3968, Stop: 4333, Start Num: 82

Candidate Starts for Dietrick_12:

(Start: 82 @3968 has 257 MA's), (Start: 89 @3983 has 4 MA's), (160, 4118), (187, 4196), (191, 4208), (193, 4211), (247, 4304),

Gene: DirtMonster_6 Start: 2758, Stop: 3150, Start Num: 84

Candidate Starts for DirtMonster_6:

(Start: 84 @2758 has 21 MA's), (Start: 89 @2770 has 4 MA's), (114, 2818), (117, 2824), (149, 2887), (160, 2941), (187, 3019), (191, 3031), (193, 3034),

Gene: DoctorDiddles_44 Start: 35192, Stop: 34773, Start Num: 85

Candidate Starts for DoctorDiddles_44:

(69, 35213), (73, 35201), (Start: 85 @35192 has 39 MA's), (Start: 89 @35180 has 4 MA's), (160, 35006), (199, 34904),

Gene: Donkeykong_83 Start: 49734, Stop: 50111, Start Num: 83

Candidate Starts for Donkeykong_83:

(Start: 83 @49734 has 32 MA's), (Start: 89 @49749 has 4 MA's), (160, 49884), (188, 49968), (190, 49974), (191, 49977), (242, 50061),

Gene: Dorothy_81 Start: 50224, Stop: 50574, Start Num: 82
Candidate Starts for Dorothy_81:
(Start: 82 @50224 has 257 MA's), (Start: 89 @50239 has 4 MA's), (160, 50374), (247, 50551),

Gene: DrPhinkDaddy_14 Start: 5050, Stop: 5400, Start Num: 82
Candidate Starts for DrPhinkDaddy_14:
(Start: 82 @5050 has 257 MA's), (Start: 89 @5065 has 4 MA's), (160, 5185), (187, 5263), (191, 5275),
(193, 5278), (247, 5371),

Gene: Drazdys_8 Start: 2464, Stop: 2820, Start Num: 103
Candidate Starts for Drazdys_8:
(Start: 103 @2464 has 18 MA's), (108, 2476), (122, 2503), (146, 2548), (160, 2611), (187, 2689), (191,
2701), (193, 2704),

Gene: Dreamboat_79 Start: 46273, Stop: 45872, Start Num: 84
Candidate Starts for Dreamboat_79:
(Start: 84 @46273 has 21 MA's), (160, 46081), (187, 46003), (191, 45991), (193, 45988), (247, 45895),

Gene: Dreamboat_62 Start: 40065, Stop: 39685, Start Num: 82
Candidate Starts for Dreamboat_62:
(8, 40266), (50, 40122), (51, 40119), (Start: 82 @40065 has 257 MA's), (Start: 89 @40053 has 4 MA's),
(160, 39897), (167, 39861), (170, 39855), (245, 39723),

Gene: Dussy_79 Start: 47985, Stop: 47563, Start Num: 85
Candidate Starts for Dussy_79:
(Start: 85 @47985 has 39 MA's), (Start: 89 @47973 has 4 MA's), (160, 47817), (184, 47745), (196,
47721), (230, 47649), (247, 47586),

Gene: Dylan_22 Start: 10677, Stop: 11069, Start Num: 85
Candidate Starts for Dylan_22:
(Start: 85 @10677 has 39 MA's), (160, 10809), (186, 10893), (208, 10947), (220, 10971), (227, 10983),
(230, 10989), (243, 11013), (246, 11028), (247, 11046),

Gene: ET08_12 Start: 4991, Stop: 5341, Start Num: 82
Candidate Starts for ET08_12:
(Start: 82 @4991 has 257 MA's), (Start: 89 @5006 has 4 MA's), (160, 5126), (187, 5204), (191, 5216),
(193, 5219), (247, 5312),

Gene: ET08_5 Start: 2600, Stop: 3040, Start Num: 59
Candidate Starts for ET08_5:
(Start: 59 @2600 has 16 MA's), (68, 2612), (136, 2732), (160, 2822), (172, 2864), (225, 2960), (235,
2984),

Gene: EasyJones_13 Start: 3951, Stop: 4316, Start Num: 82
Candidate Starts for EasyJones_13:
(Start: 82 @3951 has 257 MA's), (Start: 89 @3966 has 4 MA's), (160, 4101), (187, 4179), (191, 4191),
(193, 4194), (247, 4287),

Gene: Eish_82 Start: 49234, Stop: 49629, Start Num: 82
Candidate Starts for Eish_82:
(Start: 82 @49234 has 257 MA's), (Start: 89 @49249 has 4 MA's), (114, 49297), (117, 49303), (149,
49366), (160, 49420), (187, 49498), (191, 49510), (193, 49513),

Gene: Elite2014_45 Start: 35276, Stop: 34881, Start Num: 82

Candidate Starts for Elite2014_45:

(26, 35378), (29, 35372), (41, 35342), (Start: 82 @35276 has 257 MA's), (Start: 89 @35264 has 4 MA's), (160, 35108), (166, 35075), (175, 35054), (219, 34988), (253, 34904),

Gene: EmToTheThree_17 Start: 6464, Stop: 6814, Start Num: 82

Candidate Starts for EmToTheThree_17:

(Start: 82 @6464 has 257 MA's), (Start: 89 @6479 has 4 MA's), (160, 6599), (187, 6677), (191, 6689), (193, 6692), (247, 6785),

Gene: Emma_82 Start: 47609, Stop: 47959, Start Num: 82

Candidate Starts for Emma_82:

(32, 47513), (Start: 82 @47609 has 257 MA's), (Start: 89 @47624 has 4 MA's), (160, 47744),

Gene: EmmaElysia_13 Start: 3966, Stop: 4331, Start Num: 82

Candidate Starts for EmmaElysia_13:

(Start: 82 @3966 has 257 MA's), (Start: 89 @3981 has 4 MA's), (160, 4116), (187, 4194), (191, 4206), (193, 4209), (247, 4302),

Gene: Erdmann_14 Start: 5050, Stop: 5400, Start Num: 82

Candidate Starts for Erdmann_14:

(Start: 82 @5050 has 257 MA's), (Start: 89 @5065 has 4 MA's), (160, 5185), (187, 5263), (191, 5275), (193, 5278), (247, 5371),

Gene: EricMillard_72 Start: 50977, Stop: 50564, Start Num: 82

Candidate Starts for EricMillard_72:

(Start: 82 @50977 has 257 MA's), (Start: 89 @50965 has 4 MA's), (131, 50881), (140, 50863), (160, 50785), (167, 50749), (170, 50743), (245, 50611),

Gene: Erk16_85 Start: 60039, Stop: 60434, Start Num: 103

Candidate Starts for Erk16_85:

(39, 59916), (45, 59925), (Start: 103 @60039 has 18 MA's), (133, 60114), (157, 60186), (160, 60219), (167, 60255), (170, 60261), (245, 60393), (247, 60411),

Gene: ErnieJ_17 Start: 5141, Stop: 5506, Start Num: 82

Candidate Starts for ErnieJ_17:

(Start: 82 @5141 has 257 MA's), (Start: 89 @5156 has 4 MA's), (160, 5291), (187, 5369), (191, 5381), (193, 5384), (247, 5477),

Gene: Essence_13 Start: 3966, Stop: 4331, Start Num: 82

Candidate Starts for Essence_13:

(Start: 82 @3966 has 257 MA's), (Start: 89 @3981 has 4 MA's), (160, 4116), (187, 4194), (191, 4206), (193, 4209), (247, 4302),

Gene: Eureka_44 Start: 36100, Stop: 35735, Start Num: 93

Candidate Starts for Eureka_44:

(88, 36112), (Start: 93 @36100 has 1 MA's), (Start: 96 @36091 has 2 MA's), (106, 36079), (160, 35959), (172, 35917), (225, 35821), (247, 35764),

Gene: Ewok_14 Start: 5050, Stop: 5400, Start Num: 82

Candidate Starts for Ewok_14:

(Start: 82 @5050 has 257 MA's), (Start: 89 @5065 has 4 MA's), (160, 5185), (187, 5263), (191, 5275), (193, 5278), (247, 5371),

Gene: Eyeball_79 Start: 47899, Stop: 47528, Start Num: 84

Candidate Starts for Eyeball_79:

(Start: 84 @47899 has 21 MA's), (Start: 89 @47887 has 4 MA's), (105, 47851), (141, 47809), (153, 47785), (160, 47743), (191, 47653), (193, 47650), (242, 47587), (248, 47551),

Gene: Fancypants_92 Start: 52024, Stop: 52425, Start Num: 116

Candidate Starts for Fancypants_92:

(5, 51730), (14, 51763), (36, 51850), (37, 51859), (49, 51883), (60, 51901), (Start: 102 @51994 has 1 MA's), (107, 52003), (Start: 116 @52024 has 8 MA's), (156, 52123), (160, 52156), (193, 52261), (213, 52297), (223, 52318), (242, 52357),

Gene: FeliMaine_8 Start: 2581, Stop: 2958, Start Num: 82

Candidate Starts for FeliMaine_8:

(Start: 82 @2581 has 257 MA's), (Start: 89 @2593 has 4 MA's), (160, 2749), (187, 2827), (191, 2839), (193, 2842),

Gene: Filuzino_80 Start: 50124, Stop: 50459, Start Num: 82

Candidate Starts for Filuzino_80:

(3, 49893), (6, 49920), (9, 49932), (11, 49938), (13, 49944), (20, 49980), (Start: 82 @50124 has 257 MA's), (Start: 89 @50139 has 4 MA's), (160, 50259), (210, 50361), (226, 50382), (235, 50406),

Gene: Firehouse51_75 Start: 49196, Stop: 49573, Start Num: 80

Candidate Starts for Firehouse51_75:

(33, 49100), (Start: 80 @49196 has 3 MA's), (Start: 89 @49211 has 4 MA's), (160, 49346), (166, 49379), (175, 49400), (219, 49466), (253, 49550),

Gene: Flabslab_13 Start: 3966, Stop: 4331, Start Num: 82

Candidate Starts for Flabslab_13:

(Start: 82 @3966 has 257 MA's), (Start: 89 @3981 has 4 MA's), (160, 4116), (187, 4194), (191, 4206), (193, 4209), (247, 4302),

Gene: Flathead_78 Start: 47777, Stop: 48157, Start Num: 83

Candidate Starts for Flathead_78:

(Start: 83 @47777 has 32 MA's), (Start: 89 @47792 has 4 MA's), (160, 47927), (188, 48011), (190, 48017), (191, 48020), (242, 48104),

Gene: Fludd_13 Start: 3952, Stop: 4317, Start Num: 82

Candidate Starts for Fludd_13:

(Start: 82 @3952 has 257 MA's), (Start: 89 @3967 has 4 MA's), (160, 4102), (187, 4180), (191, 4192), (193, 4195), (247, 4288),

Gene: FoxtrotP1_15 Start: 5609, Stop: 5959, Start Num: 82

Candidate Starts for FoxtrotP1_15:

(Start: 82 @5609 has 257 MA's), (Start: 89 @5624 has 4 MA's), (160, 5744), (187, 5822), (191, 5834), (193, 5837), (247, 5930),

Gene: FreddyB_88 Start: 49777, Stop: 50202, Start Num: 83

Candidate Starts for FreddyB_88:

(Start: 83 @49777 has 32 MA's), (Start: 89 @49792 has 4 MA's), (160, 49972), (188, 50056), (190, 50062), (191, 50065), (242, 50149),

Gene: Fringe_56 Start: 48267, Stop: 47878, Start Num: 82

Candidate Starts for Fringe_56:

(Start: 82 @48267 has 257 MA's), (Start: 89 @48255 has 4 MA's), (160, 48099), (167, 48063), (170, 48057), (245, 47925),

Gene: Fruitloop_74 Start: 47706, Stop: 48077, Start Num: 81

Candidate Starts for Fruitloop_74:

(30, 47610), (Start: 81 @47706 has 12 MA's), (Start: 89 @47721 has 4 MA's), (160, 47841), (174, 47895), (178, 47904), (202, 47952), (205, 47958), (227, 47994), (237, 48012), (247, 48048),

Gene: FudgeTart_14 Start: 5050, Stop: 5400, Start Num: 82

Candidate Starts for FudgeTart_14:

(Start: 82 @5050 has 257 MA's), (Start: 89 @5065 has 4 MA's), (160, 5185), (187, 5263), (191, 5275), (193, 5278), (247, 5371),

Gene: Fushigi_75 Start: 45357, Stop: 44953, Start Num: 85

Candidate Starts for Fushigi_75:

(Start: 85 @45357 has 39 MA's), (160, 45159), (179, 45108), (194, 45084), (207, 45057), (247, 44976),

Gene: Gabriel_14 Start: 3966, Stop: 4331, Start Num: 82

Candidate Starts for Gabriel_14:

(Start: 82 @3966 has 257 MA's), (Start: 89 @3981 has 4 MA's), (160, 4116), (187, 4194), (191, 4206), (193, 4209), (247, 4302),

Gene: GageAP_62 Start: 41383, Stop: 41024, Start Num: 82

Candidate Starts for GageAP_62:

(8, 41584), (50, 41440), (51, 41437), (Start: 82 @41383 has 257 MA's), (Start: 89 @41371 has 4 MA's), (160, 41236), (167, 41200), (170, 41194), (245, 41062),

Gene: Gaia_50 Start: 37260, Stop: 36913, Start Num: 101

Candidate Starts for Gaia_50:

(87, 37293), (Start: 101 @37260 has 2 MA's), (159, 37140), (162, 37122),

Gene: Gamgam_13 Start: 3970, Stop: 4335, Start Num: 82

Candidate Starts for Gamgam_13:

(Start: 82 @3970 has 257 MA's), (Start: 89 @3985 has 4 MA's), (160, 4120), (187, 4198), (191, 4210), (193, 4213), (247, 4306),

Gene: Gandalph_77 Start: 45404, Stop: 45799, Start Num: 83

Candidate Starts for Gandalph_77:

(Start: 83 @45404 has 32 MA's), (Start: 89 @45419 has 4 MA's), (160, 45539), (184, 45617), (192, 45641), (230, 45713),

Gene: Gattaca_9 Start: 2524, Stop: 2901, Start Num: 80

Candidate Starts for Gattaca_9:

(Start: 80 @2524 has 3 MA's), (Start: 89 @2539 has 4 MA's), (160, 2674), (166, 2707), (175, 2728), (219, 2794), (253, 2878),

Gene: Gervas_51 Start: 45588, Stop: 45145, Start Num: 82

Candidate Starts for Gervas_51:

(Start: 82 @45588 has 257 MA's), (Start: 89 @45576 has 4 MA's), (139, 45456), (151, 45426), (160, 45366), (167, 45330), (170, 45324), (245, 45192),

Gene: Ghost_14 Start: 3970, Stop: 4335, Start Num: 82

Candidate Starts for Ghost_14:

(Start: 82 @3970 has 257 MA's), (Start: 89 @3985 has 4 MA's), (160, 4120), (187, 4198), (191, 4210), (193, 4213), (247, 4306),

Gene: Giraffe_53 Start: 47326, Stop: 46979, Start Num: 82

Candidate Starts for Giraffe_53:

(Start: 82 @47326 has 257 MA's), (Start: 89 @47314 has 4 MA's), (160, 47194), (167, 47158), (170, 47152), (245, 47020), (247, 47002),

Gene: Girr_75 Start: 48247, Stop: 48597, Start Num: 82

Candidate Starts for Girr_75:

(Start: 82 @48247 has 257 MA's), (Start: 89 @48262 has 4 MA's), (160, 48382),

Gene: Giuseppe_86 Start: 59752, Stop: 60147, Start Num: 103

Candidate Starts for Giuseppe_86:

(39, 59629), (Start: 103 @59752 has 18 MA's), (133, 59827), (157, 59899), (160, 59932), (167, 59968), (170, 59974), (245, 60106), (247, 60124),

Gene: Gizmo_15 Start: 5050, Stop: 5400, Start Num: 82

Candidate Starts for Gizmo_15:

(Start: 82 @5050 has 257 MA's), (Start: 89 @5065 has 4 MA's), (160, 5185), (187, 5263), (191, 5275), (193, 5278), (247, 5371),

Gene: Goku_44 Start: 35820, Stop: 35464, Start Num: 96

Candidate Starts for Goku_44:

(88, 35841), (Start: 93 @35829 has 1 MA's), (Start: 96 @35820 has 2 MA's), (106, 35808), (160, 35688), (172, 35646), (225, 35550), (247, 35493),

Gene: Gonephishing_73 Start: 48084, Stop: 47683, Start Num: 82

Candidate Starts for Gonephishing_73:

(Start: 82 @48084 has 257 MA's), (Start: 89 @48072 has 4 MA's), (132, 47988), (142, 47970), (160, 47892), (187, 47814), (191, 47802), (193, 47799), (247, 47706),

Gene: Gorge_80 Start: 49405, Stop: 49830, Start Num: 83

Candidate Starts for Gorge_80:

(Start: 83 @49405 has 32 MA's), (Start: 89 @49420 has 4 MA's), (160, 49600), (188, 49684), (190, 49690), (191, 49693), (242, 49777),

Gene: Graduation_65 Start: 42237, Stop: 41857, Start Num: 82

Candidate Starts for Graduation_65:

(8, 42438), (50, 42294), (51, 42291), (Start: 82 @42237 has 257 MA's), (Start: 89 @42225 has 4 MA's), (160, 42069), (167, 42033), (170, 42027), (245, 41895),

Gene: Grand2040_52 Start: 47320, Stop: 46973, Start Num: 82

Candidate Starts for Grand2040_52:

(Start: 82 @47320 has 257 MA's), (Start: 89 @47308 has 4 MA's), (160, 47188), (167, 47152), (170, 47146), (245, 47014), (247, 46996),

Gene: Grungle_6 Start: 1770, Stop: 2210, Start Num: 59

Candidate Starts for Grungle_6:

(Start: 59 @1770 has 16 MA's), (68, 1782), (136, 1902), (160, 1992), (172, 2034), (225, 2130), (235, 2154),

Gene: Guwapp_13 Start: 3966, Stop: 4331, Start Num: 82

Candidate Starts for Guwapp_13:

(Start: 82 @3966 has 257 MA's), (Start: 89 @3981 has 4 MA's), (160, 4116), (187, 4194), (191, 4206), (193, 4209), (247, 4302),

Gene: Gwilliam_54 Start: 47683, Stop: 47303, Start Num: 82

Candidate Starts for Gwilliam_54:

(Start: 82 @47683 has 257 MA's), (Start: 89 @47671 has 4 MA's), (160, 47515), (167, 47479), (170, 47473), (245, 47341),

Gene: Gyzlar_56 Start: 38713, Stop: 38327, Start Num: 85

Candidate Starts for Gyzlar_56:

(Start: 85 @38713 has 39 MA's), (Start: 89 @38701 has 4 MA's), (160, 38581), (184, 38509), (192, 38485), (230, 38413), (247, 38350),

Gene: Halldule_6 Start: 1766, Stop: 2206, Start Num: 59

Candidate Starts for Halldule_6:

(Start: 59 @1766 has 16 MA's), (68, 1778), (136, 1898), (160, 1988), (161, 1991), (172, 2030), (225, 2126), (235, 2150),

Gene: Hannaconda_73 Start: 46951, Stop: 46607, Start Num: 84

Candidate Starts for Hannaconda_73:

(Start: 84 @46951 has 21 MA's), (Start: 89 @46939 has 4 MA's), (160, 46819), (191, 46729), (193, 46726), (247, 46633),

Gene: Hegedechwinu_80 Start: 46978, Stop: 47358, Start Num: 83

Candidate Starts for Hegedechwinu_80:

(Start: 83 @46978 has 32 MA's), (Start: 89 @46993 has 4 MA's), (160, 47128), (188, 47212), (190, 47218), (191, 47221), (242, 47305),

Gene: HenryJackson_52 Start: 47354, Stop: 46911, Start Num: 82

Candidate Starts for HenryJackson_52:

(Start: 82 @47354 has 257 MA's), (Start: 89 @47342 has 4 MA's), (139, 47222), (151, 47192), (160, 47132), (167, 47096), (170, 47090), (245, 46958),

Gene: HighStump_54 Start: 47890, Stop: 47447, Start Num: 82

Candidate Starts for HighStump_54:

(43, 47962), (53, 47941), (58, 47935), (Start: 82 @47890 has 257 MA's), (Start: 89 @47878 has 4 MA's), (139, 47758), (151, 47728), (160, 47668), (167, 47632), (170, 47626), (245, 47494),

Gene: Highbury_43 Start: 34897, Stop: 34421, Start Num: 83

Candidate Starts for Highbury_43:

(40, 34969), (Start: 83 @34897 has 32 MA's), (Start: 89 @34885 has 4 MA's), (151, 34735), (160, 34675), (184, 34603), (192, 34579), (230, 34507), (247, 34444),

Gene: Homines_53 Start: 37028, Stop: 36645, Start Num: 82

Candidate Starts for Homines_53:

(6, 37238), (8, 37229), (50, 37085), (51, 37082), (Start: 82 @37028 has 257 MA's), (Start: 89 @37016 has 4 MA's), (118, 36968), (120, 36962), (149, 36899), (160, 36845), (206, 36743), (219, 36722), (241, 36698),

Gene: Huphlepuuff_7 Start: 2307, Stop: 2687, Start Num: 82

Candidate Starts for Huphlepuuff_7:

(Start: 82 @2307 has 257 MA's), (Start: 89 @2322 has 4 MA's), (160, 2478), (187, 2556), (191, 2568), (193, 2571),

Gene: HyRo_11 Start: 4892, Stop: 5257, Start Num: 82

Candidate Starts for HyRo_11:

(Start: 82 @4892 has 257 MA's), (Start: 89 @4907 has 4 MA's), (160, 5042), (187, 5120), (191, 5132), (193, 5135), (247, 5228),

Gene: I3_7 Start: 2438, Stop: 2830, Start Num: 85

Candidate Starts for I3_7:

(Start: 85 @2438 has 39 MA's), (109, 2498), (112, 2504), (144, 2564), (152, 2567), (160, 2621), (199, 2723),

Gene: IMpilo_74 Start: 45725, Stop: 46135, Start Num: 82

Candidate Starts for IMpilo_74:

(Start: 82 @45725 has 257 MA's), (Start: 89 @45740 has 4 MA's), (123, 45800), (157, 45872), (160, 45905), (199, 46001), (234, 46067), (245, 46091), (247, 46112),

Gene: IbOuu_77 Start: 46622, Stop: 47065, Start Num: 57

Candidate Starts for IbOuu_77:

(Start: 57 @46622 has 1 MA's), (66, 46637), (160, 46817), (190, 46904), (193, 46910), (204, 46934), (247, 47036),

Gene: Ibhubesi_77 Start: 46004, Stop: 46342, Start Num: 82

Candidate Starts for Ibhubesi_77:

(Start: 82 @46004 has 257 MA's), (Start: 89 @46019 has 4 MA's), (100, 46046), (160, 46139), (173, 46181), (210, 46247),

Gene: IkeLoa_6 Start: 2612, Stop: 3052, Start Num: 59

Candidate Starts for IkeLoa_6:

(Start: 59 @2612 has 16 MA's), (68, 2624), (136, 2744), (160, 2834), (172, 2876), (225, 2972), (235, 2996),

Gene: InigoMontoya_14 Start: 3970, Stop: 4335, Start Num: 82

Candidate Starts for InigoMontoya_14:

(Start: 82 @3970 has 257 MA's), (Start: 89 @3985 has 4 MA's), (160, 4120), (187, 4198), (191, 4210), (193, 4213), (247, 4306),

Gene: InterFolia_8 Start: 2464, Stop: 2820, Start Num: 103

Candidate Starts for InterFolia_8:

(Start: 103 @2464 has 18 MA's), (108, 2476), (122, 2503), (146, 2548), (160, 2611), (187, 2689), (191, 2701), (193, 2704),

Gene: Inventum_78 Start: 48409, Stop: 48759, Start Num: 82

Candidate Starts for Inventum_78:

(Start: 82 @48409 has 257 MA's), (Start: 89 @48424 has 4 MA's), (160, 48559), (247, 48736),

Gene: Iridessa_54 Start: 47334, Stop: 46891, Start Num: 82

Candidate Starts for Iridessa_54:

(43, 47406), (53, 47385), (58, 47379), (Start: 82 @47334 has 257 MA's), (Start: 89 @47322 has 4 MA's), (139, 47202), (151, 47172), (160, 47112), (167, 47076), (170, 47070), (245, 46938),

Gene: Issimir_14 Start: 5044, Stop: 5394, Start Num: 82

Candidate Starts for Issimir_14:

(Start: 82 @5044 has 257 MA's), (Start: 89 @5059 has 4 MA's), (160, 5179), (187, 5257), (191, 5269), (193, 5272), (247, 5365),

Gene: Izajani_14 Start: 5050, Stop: 5400, Start Num: 82

Candidate Starts for Izajani_14:

(Start: 82 @5050 has 257 MA's), (Start: 89 @5065 has 4 MA's), (160, 5185), (187, 5263), (191, 5275), (193, 5278), (247, 5371),

Gene: JPickles_13 Start: 3970, Stop: 4335, Start Num: 82

Candidate Starts for JPickles_13:

(Start: 82 @3970 has 257 MA's), (Start: 89 @3985 has 4 MA's), (160, 4120), (187, 4198), (191, 4210), (193, 4213), (247, 4306),

Gene: Jabbawokkie_88 Start: 46909, Stop: 47265, Start Num: 81

Candidate Starts for Jabbawokkie_88:

(Start: 81 @46909 has 12 MA's), (Start: 89 @46924 has 4 MA's), (160, 47044), (244, 47215), (247, 47236),

Gene: JalFarm20_87 Start: 48995, Stop: 49375, Start Num: 83

Candidate Starts for JalFarm20_87:

(34, 48899), (Start: 83 @48995 has 32 MA's), (Start: 89 @49010 has 4 MA's), (160, 49145), (188, 49229), (190, 49235), (191, 49238), (242, 49322),

Gene: James_80 Start: 49880, Stop: 50260, Start Num: 82

Candidate Starts for James_80:

(Start: 82 @49880 has 257 MA's), (Start: 89 @49895 has 4 MA's), (160, 50051), (187, 50129), (191, 50141), (193, 50144), (247, 50237),

Gene: Janiyra_13 Start: 3949, Stop: 4314, Start Num: 82

Candidate Starts for Janiyra_13:

(Start: 82 @3949 has 257 MA's), (Start: 89 @3964 has 4 MA's), (160, 4099), (187, 4177), (191, 4189), (193, 4192), (247, 4285),

Gene: Jacob_79 Start: 49477, Stop: 49857, Start Num: 82

Candidate Starts for Jacob_79:

(Start: 82 @49477 has 257 MA's), (Start: 89 @49492 has 4 MA's), (160, 49648), (187, 49726), (191, 49738), (193, 49741), (247, 49834),

Gene: Jasper_78 Start: 46159, Stop: 45758, Start Num: 84

Candidate Starts for Jasper_78:

(Start: 84 @46159 has 21 MA's), (160, 45967), (187, 45889), (191, 45877), (193, 45874), (247, 45781),

Gene: Jasper_61 Start: 39951, Stop: 39571, Start Num: 82

Candidate Starts for Jasper_61:

(8, 40152), (50, 40008), (51, 40005), (Start: 82 @39951 has 257 MA's), (Start: 89 @39939 has 4 MA's), (160, 39783), (167, 39747), (170, 39741), (245, 39609),

Gene: JayJay_6 Start: 1993, Stop: 2349, Start Num: 103

Candidate Starts for JayJay_6:

(76, 1942), (Start: 103 @1993 has 18 MA's), (108, 2005), (122, 2032), (146, 2077), (160, 2140), (187, 2218), (191, 2230), (193, 2233),

Gene: Jaygup_13 Start: 3966, Stop: 4331, Start Num: 82

Candidate Starts for Jaygup_13:

(Start: 82 @3966 has 257 MA's), (Start: 89 @3981 has 4 MA's), (160, 4116), (187, 4194), (191, 4206), (193, 4209), (247, 4302),

Gene: Jedediah_13 Start: 3970, Stop: 4335, Start Num: 82

Candidate Starts for Jedediah_13:

(Start: 82 @3970 has 257 MA's), (Start: 89 @3985 has 4 MA's), (160, 4120), (187, 4198), (191, 4210), (193, 4213), (247, 4306),

Gene: Jemmno_12 Start: 3970, Stop: 4335, Start Num: 82

Candidate Starts for Jemmno_12:

(Start: 82 @3970 has 257 MA's), (Start: 89 @3985 has 4 MA's), (160, 4120), (187, 4198), (191, 4210), (193, 4213), (247, 4306),

Gene: Jessibeth14_14 Start: 5050, Stop: 5400, Start Num: 82

Candidate Starts for Jessibeth14_14:

(Start: 82 @5050 has 257 MA's), (Start: 89 @5065 has 4 MA's), (160, 5185), (187, 5263), (191, 5275), (193, 5278), (247, 5371),

Gene: JigglyPuff_6 Start: 1982, Stop: 2365, Start Num: 82

Candidate Starts for JigglyPuff_6:

(53, 1931), (Start: 82 @1982 has 257 MA's), (Start: 89 @1994 has 4 MA's), (160, 2150), (167, 2186), (170, 2192), (211, 2270), (245, 2324),

Gene: JoieB_8 Start: 2529, Stop: 2909, Start Num: 82

Candidate Starts for JoieB_8:

(Start: 82 @2529 has 257 MA's), (Start: 89 @2544 has 4 MA's), (160, 2700), (187, 2778), (191, 2790), (193, 2793),

Gene: Jorgensen_64 Start: 41112, Stop: 40717, Start Num: 85

Candidate Starts for Jorgensen_64:

(8, 41313), (50, 41169), (51, 41166), (Start: 85 @41112 has 39 MA's), (Start: 89 @41100 has 4 MA's), (160, 40944), (199, 40842),

Gene: Juniper1_77 Start: 47775, Stop: 48149, Start Num: 75

Candidate Starts for Juniper1_77:

(Start: 75 @47775 has 1 MA's), (Start: 89 @47799 has 4 MA's), (160, 47934), (167, 47970), (170, 47976), (245, 48108), (247, 48126),

Gene: JustHall_13 Start: 4965, Stop: 5330, Start Num: 82

Candidate Starts for JustHall_13:

(Start: 82 @4965 has 257 MA's), (Start: 89 @4980 has 4 MA's), (160, 5115), (187, 5193), (191, 5205), (193, 5208), (247, 5301),

Gene: KBG_62 Start: 42879, Stop: 42511, Start Num: 82

Candidate Starts for KBG_62:

(50, 42936), (51, 42933), (Start: 82 @42879 has 257 MA's), (Start: 89 @42867 has 4 MA's), (160, 42732), (176, 42672), (202, 42636), (229, 42588), (231, 42585), (253, 42522),

Gene: KSSJEB_78 Start: 46842, Stop: 46471, Start Num: 84

Candidate Starts for KSSJEB_78:

(Start: 84 @46842 has 21 MA's), (Start: 89 @46830 has 4 MA's), (105, 46794), (141, 46752), (153, 46728), (160, 46686), (191, 46596), (193, 46593), (242, 46530), (248, 46494),

Gene: Kahve_52 Start: 47351, Stop: 46908, Start Num: 82

Candidate Starts for Kahve_52:

(Start: 82 @47351 has 257 MA's), (Start: 89 @47339 has 4 MA's), (139, 47219), (151, 47189), (160, 47129), (167, 47093), (170, 47087), (245, 46955),

Gene: Kamryn_6 Start: 1771, Stop: 2151, Start Num: 89

Candidate Starts for Kamryn_6:

(Start: 84 @1759 has 21 MA's), (Start: 89 @1771 has 4 MA's), (114, 1819), (117, 1825), (149, 1888), (160, 1942), (187, 2020), (191, 2032), (193, 2035),

Gene: Kboogie_13 Start: 3968, Stop: 4333, Start Num: 82

Candidate Starts for Kboogie_13:

(Start: 82 @3968 has 257 MA's), (Start: 89 @3983 has 4 MA's), (160, 4118), (187, 4196), (191, 4208), (193, 4211), (247, 4304),

Gene: Kenmech_82 Start: 49111, Stop: 48689, Start Num: 85

Candidate Starts for Kenmech_82:

(Start: 85 @49111 has 39 MA's), (Start: 89 @49099 has 4 MA's), (160, 48943), (184, 48871), (196, 48847), (230, 48775), (247, 48712),

Gene: Kenuha5_75 Start: 48762, Stop: 49157, Start Num: 83

Candidate Starts for Kenuha5_75:

(Start: 83 @48762 has 32 MA's), (Start: 89 @48777 has 4 MA's), (160, 48897), (184, 48975), (192, 48999), (230, 49071),

Gene: Kersh_88 Start: 52115, Stop: 52522, Start Num: 82

Candidate Starts for Kersh_88:

(15, 51941), (17, 51950), (22, 51974), (67, 52085), (Start: 71 @52094 has 1 MA's), (Start: 82 @52115 has 257 MA's), (110, 52172), (131, 52211), (160, 52307), (167, 52343), (170, 52349), (245, 52481),

Gene: Khaleesi_14 Start: 5050, Stop: 5400, Start Num: 82

Candidate Starts for Khaleesi_14:

(Start: 82 @5050 has 257 MA's), (Start: 89 @5065 has 4 MA's), (160, 5185), (187, 5263), (191, 5275), (193, 5278), (247, 5371),

Gene: Khan1_53 Start: 47307, Stop: 46918, Start Num: 82

Candidate Starts for Khan1_53:

(Start: 82 @47307 has 257 MA's), (Start: 89 @47295 has 4 MA's), (160, 47139), (167, 47103), (170, 47097), (245, 46965),

Gene: Kingsley_82 Start: 50469, Stop: 50837, Start Num: 82

Candidate Starts for Kingsley_82:

(Start: 82 @50469 has 257 MA's), (Start: 89 @50484 has 4 MA's), (160, 50604), (178, 50673), (189, 50694), (223, 50754), (247, 50811),

Gene: Koella_70 Start: 44029, Stop: 44454, Start Num: 83

Candidate Starts for Koella_70:

(Start: 83 @44029 has 32 MA's), (Start: 89 @44044 has 4 MA's), (160, 44224), (188, 44308), (190, 44314), (191, 44317), (242, 44401),

Gene: Koella_74 Start: 45585, Stop: 45968, Start Num: 116

Candidate Starts for Koella_74:

(36, 45411), (37, 45420), (49, 45444), (60, 45462), (Start: 102 @45555 has 1 MA's), (107, 45564), (Start: 116 @45585 has 8 MA's), (169, 45771), (183, 45801), (199, 45837), (231, 45888),

Gene: Koguma_6 Start: 1766, Stop: 2206, Start Num: 59

Candidate Starts for Koguma_6:

(Start: 59 @1766 has 16 MA's), (68, 1778), (136, 1898), (160, 1988), (172, 2030), (225, 2126), (235, 2150),

Gene: Krakatau_74 Start: 44687, Stop: 45067, Start Num: 81

Candidate Starts for Krakatau_74:

(Start: 81 @44687 has 12 MA's), (Start: 89 @44702 has 4 MA's), (160, 44822), (190, 44909), (193, 44915), (204, 44939), (236, 45002), (247, 45038),

Gene: Kronus_50 Start: 46191, Stop: 45748, Start Num: 82

Candidate Starts for Kronus_50:

(Start: 82 @46191 has 257 MA's), (Start: 89 @46179 has 4 MA's), (139, 46059), (151, 46029), (160, 45969), (167, 45933), (170, 45927), (245, 45795),

Gene: Kugel_63 Start: 41957, Stop: 41598, Start Num: 82

Candidate Starts for Kugel_63:

(8, 42158), (50, 42014), (51, 42011), (Start: 82 @41957 has 257 MA's), (160, 41825), (166, 41792), (175, 41771), (219, 41705), (253, 41621),

Gene: Kykar_79 Start: 47679, Stop: 47278, Start Num: 85

Candidate Starts for Kykar_79:

(Start: 85 @47679 has 39 MA's), (Start: 89 @47667 has 4 MA's), (158, 47508), (160, 47493), (194, 47412), (207, 47385),

Gene: LRRHood_6 Start: 2751, Stop: 3191, Start Num: 59

Candidate Starts for LRRHood_6:

(Start: 59 @2751 has 16 MA's), (68, 2763), (136, 2883), (160, 2973), (172, 3015), (225, 3111), (235, 3135),

Gene: LRRHood_14 Start: 5702, Stop: 6052, Start Num: 82

Candidate Starts for LRRHood_14:

(Start: 82 @5702 has 257 MA's), (Start: 89 @5717 has 4 MA's), (160, 5837), (187, 5915), (191, 5927), (193, 5930), (247, 6023),

Gene: LastJedi_70 Start: 46604, Stop: 47029, Start Num: 83

Candidate Starts for LastJedi_70:

(Start: 83 @46604 has 32 MA's), (Start: 89 @46619 has 4 MA's), (160, 46799), (188, 46883), (190, 46889), (191, 46892), (242, 46976),

Gene: Latch_13 Start: 3970, Stop: 4335, Start Num: 82

Candidate Starts for Latch_13:

(Start: 82 @3970 has 257 MA's), (Start: 89 @3985 has 4 MA's), (160, 4120), (187, 4198), (191, 4210), (193, 4213), (247, 4306),

Gene: Latretium_78 Start: 47174, Stop: 47560, Start Num: 82
Candidate Starts for Latretium_78:
(Start: 82 @47174 has 257 MA's), (Start: 89 @47186 has 4 MA's), (160, 47342), (167, 47378), (170, 47384), (245, 47516),

Gene: Legolas_54 Start: 47787, Stop: 47344, Start Num: 82
Candidate Starts for Legolas_54:
(43, 47859), (53, 47838), (58, 47832), (Start: 82 @47787 has 257 MA's), (Start: 89 @47775 has 4 MA's), (139, 47655), (151, 47625), (160, 47565), (167, 47529), (170, 47523), (245, 47391),

Gene: LeiMonet_54 Start: 47306, Stop: 46959, Start Num: 82
Candidate Starts for LeiMonet_54:
(Start: 82 @47306 has 257 MA's), (Start: 89 @47294 has 4 MA's), (160, 47174), (167, 47138), (170, 47132), (245, 47000), (247, 46982),

Gene: Leozinho_78 Start: 46065, Stop: 46445, Start Num: 82
Candidate Starts for Leozinho_78:
(Start: 82 @46065 has 257 MA's), (Start: 89 @46080 has 4 MA's), (123, 46140), (157, 46212), (160, 46245), (247, 46422),

Gene: Lethe_6 Start: 1613, Stop: 2053, Start Num: 59
Candidate Starts for Lethe_6:
(Start: 59 @1613 has 16 MA's), (68, 1625), (136, 1745), (160, 1835), (172, 1877), (225, 1973), (235, 1997),

Gene: LifeSavor_14 Start: 3966, Stop: 4331, Start Num: 82
Candidate Starts for LifeSavor_14:
(Start: 82 @3966 has 257 MA's), (Start: 89 @3981 has 4 MA's), (160, 4116), (187, 4194), (191, 4206), (193, 4209), (247, 4302),

Gene: Lilbit_8 Start: 2581, Stop: 2958, Start Num: 82
Candidate Starts for Lilbit_8:
(Start: 82 @2581 has 257 MA's), (Start: 89 @2593 has 4 MA's), (160, 2749), (187, 2827), (191, 2839), (193, 2842),

Gene: Lilpickle_45 Start: 35276, Stop: 34881, Start Num: 82
Candidate Starts for Lilpickle_45:
(26, 35378), (29, 35372), (41, 35342), (Start: 82 @35276 has 257 MA's), (Start: 89 @35264 has 4 MA's), (160, 35108), (166, 35075), (175, 35054), (219, 34988), (253, 34904),

Gene: LinStu_7 Start: 2992, Stop: 3348, Start Num: 103
Candidate Starts for LinStu_7:
(76, 2941), (Start: 103 @2992 has 18 MA's), (108, 3004), (122, 3031), (146, 3076), (160, 3139), (187, 3217), (191, 3229), (193, 3232),

Gene: LittleE_79 Start: 51011, Stop: 50637, Start Num: 89
Candidate Starts for LittleE_79:
(Start: 85 @51023 has 39 MA's), (Start: 89 @51011 has 4 MA's), (160, 50891), (184, 50819), (192, 50795), (230, 50723),

Gene: LittleLaf_7 Start: 2307, Stop: 2687, Start Num: 82
Candidate Starts for LittleLaf_7:

(Start: 82 @2307 has 257 MA's), (Start: 89 @2322 has 4 MA's), (160, 2478), (187, 2556), (191, 2568), (193, 2571),

Gene: Littleton_14 Start: 3970, Stop: 4335, Start Num: 82

Candidate Starts for Littleton_14:

(Start: 82 @3970 has 257 MA's), (Start: 89 @3985 has 4 MA's), (160, 4120), (187, 4198), (191, 4210), (193, 4213), (247, 4306),

Gene: Lizziana_83 Start: 49853, Stop: 50278, Start Num: 83

Candidate Starts for Lizziana_83:

(Start: 83 @49853 has 32 MA's), (Start: 89 @49868 has 4 MA's), (160, 50048), (188, 50132), (190, 50138), (191, 50141), (242, 50225),

Gene: Loanshark_14 Start: 5050, Stop: 5400, Start Num: 82

Candidate Starts for Loanshark_14:

(Start: 82 @5050 has 257 MA's), (Start: 89 @5065 has 4 MA's), (160, 5185), (187, 5263), (191, 5275), (193, 5278), (247, 5371),

Gene: Longacauda_53 Start: 47750, Stop: 47307, Start Num: 82

Candidate Starts for Longacauda_53:

(43, 47822), (53, 47801), (58, 47795), (Start: 82 @47750 has 257 MA's), (Start: 89 @47738 has 4 MA's), (139, 47618), (151, 47588), (160, 47528), (167, 47492), (170, 47486), (245, 47354),

Gene: Lucky2013_77 Start: 48582, Stop: 48184, Start Num: 85

Candidate Starts for Lucky2013_77:

(Start: 85 @48582 has 39 MA's), (Start: 89 @48570 has 4 MA's), (160, 48414), (188, 48330), (190, 48324), (191, 48321), (242, 48237),

Gene: Lukilu_6 Start: 2765, Stop: 3205, Start Num: 59

Candidate Starts for Lukilu_6:

(Start: 59 @2765 has 16 MA's), (68, 2777), (136, 2897), (160, 2987), (172, 3029), (225, 3125), (235, 3149),

Gene: Lumine_53 Start: 47538, Stop: 47155, Start Num: 82

Candidate Starts for Lumine_53:

(Start: 82 @47538 has 257 MA's), (Start: 89 @47526 has 4 MA's), (160, 47370), (167, 47334), (170, 47328), (245, 47196),

Gene: LunaBlu_82 Start: 48900, Stop: 49268, Start Num: 82

Candidate Starts for LunaBlu_82:

(Start: 82 @48900 has 257 MA's), (Start: 89 @48915 has 4 MA's), (160, 49050), (164, 49080), (180, 49119), (182, 49122), (247, 49245),

Gene: MISSy_42 Start: 35034, Stop: 34591, Start Num: 82

Candidate Starts for MISSy_42:

(43, 35106), (Start: 82 @35034 has 257 MA's), (Start: 89 @35022 has 4 MA's), (151, 34872), (160, 34812), (167, 34776), (170, 34770), (245, 34638),

Gene: MPhalcon_42 Start: 35027, Stop: 34584, Start Num: 82

Candidate Starts for MPhalcon_42:

(43, 35099), (Start: 82 @35027 has 257 MA's), (Start: 89 @35015 has 4 MA's), (151, 34865), (160, 34805), (167, 34769), (170, 34763), (245, 34631),

Gene: Maby2021_14 Start: 5050, Stop: 5400, Start Num: 82
Candidate Starts for Maby2021_14:
(Start: 82 @5050 has 257 MA's), (Start: 89 @5065 has 4 MA's), (160, 5185), (187, 5263), (191, 5275),
(193, 5278), (247, 5371),

Gene: MadKillah_102 Start: 61818, Stop: 61405, Start Num: 82
Candidate Starts for MadKillah_102:
(25, 61950), (42, 61890), (52, 61869), (Start: 82 @61818 has 257 MA's), (110, 61761), (131, 61722),
(160, 61626), (167, 61590), (170, 61584), (245, 61452),

Gene: Mahavrat_76 Start: 46252, Stop: 46590, Start Num: 82
Candidate Starts for Mahavrat_76:
(Start: 82 @46252 has 257 MA's), (91, 46273), (150, 46342), (152, 46348), (185, 46444),

Gene: Makemake_63 Start: 42339, Stop: 41959, Start Num: 82
Candidate Starts for Makemake_63:
(8, 42540), (50, 42396), (51, 42393), (Start: 82 @42339 has 257 MA's), (Start: 89 @42327 has 4 MA's),
(160, 42171), (167, 42135), (170, 42129), (245, 41997),

Gene: Manda_46 Start: 36625, Stop: 36245, Start Num: 85
Candidate Starts for Manda_46:
(72, 36646), (78, 36634), (Start: 85 @36625 has 39 MA's), (Start: 89 @36613 has 4 MA's), (160,
36493), (190, 36406), (193, 36400), (236, 36313), (247, 36274),

Gene: Mangeria_6 Start: 1759, Stop: 2133, Start Num: 85
Candidate Starts for Mangeria_6:
(Start: 85 @1759 has 39 MA's), (99, 1798), (138, 1843), (160, 1906), (199, 2008),

Gene: Mantra_76 Start: 47820, Stop: 48170, Start Num: 82
Candidate Starts for Mantra_76:
(32, 47724), (Start: 82 @47820 has 257 MA's), (Start: 89 @47835 has 4 MA's), (160, 47955),

Gene: Marker_91 Start: 50605, Stop: 50967, Start Num: 116
Candidate Starts for Marker_91:
(36, 50431), (37, 50440), (44, 50452), (49, 50464), (Start: 102 @50575 has 1 MA's), (107, 50584),
(Start: 116 @50605 has 8 MA's), (121, 50617), (147, 50695), (154, 50719), (160, 50761),

Gene: Marker_82 Start: 48016, Stop: 48423, Start Num: 85
Candidate Starts for Marker_82:
(23, 47893), (64, 47986), (69, 47995), (Start: 85 @48016 has 39 MA's), (98, 48055), (143, 48100),
(160, 48163), (184, 48241), (192, 48265), (230, 48337),

Gene: Marsha_82 Start: 50494, Stop: 50108, Start Num: 82
Candidate Starts for Marsha_82:
(Start: 82 @50494 has 257 MA's), (Start: 89 @50482 has 4 MA's), (160, 50326), (167, 50290), (170,
50284), (245, 50152),

Gene: Martik_80 Start: 50276, Stop: 50662, Start Num: 82
Candidate Starts for Martik_80:
(Start: 82 @50276 has 257 MA's), (Start: 89 @50291 has 4 MA's), (123, 50351), (157, 50423), (160,
50456), (247, 50633),

Gene: Maru_52 Start: 47257, Stop: 46910, Start Num: 82

Candidate Starts for Maru_52:

(Start: 82 @47257 has 257 MA's), (Start: 89 @47245 has 4 MA's), (160, 47125), (167, 47089), (170, 47083), (245, 46951), (247, 46933),

Gene: Marvin_10 Start: 3597, Stop: 3977, Start Num: 82

Candidate Starts for Marvin_10:

(35, 3501), (43, 3525), (Start: 82 @3597 has 257 MA's), (Start: 89 @3609 has 4 MA's), (160, 3765), (167, 3801), (170, 3807), (245, 3939),

Gene: MaryBeth_59 Start: 41225, Stop: 40836, Start Num: 85

Candidate Starts for MaryBeth_59:

(10, 41426), (52, 41282), (55, 41279), (Start: 85 @41225 has 39 MA's), (Start: 89 @41213 has 4 MA's), (154, 41126), (160, 41093), (184, 41015), (192, 40991), (230, 40919),

Gene: Matsumoto_12 Start: 3970, Stop: 4335, Start Num: 82

Candidate Starts for Matsumoto_12:

(Start: 82 @3970 has 257 MA's), (Start: 89 @3985 has 4 MA's), (160, 4120), (187, 4198), (191, 4210), (193, 4213), (247, 4306),

Gene: McGee_13 Start: 3968, Stop: 4333, Start Num: 82

Candidate Starts for McGee_13:

(Start: 82 @3968 has 257 MA's), (Start: 89 @3983 has 4 MA's), (160, 4118), (187, 4196), (191, 4208), (193, 4211), (247, 4304),

Gene: McWolfish_14 Start: 5050, Stop: 5400, Start Num: 82

Candidate Starts for McWolfish_14:

(Start: 82 @5050 has 257 MA's), (Start: 89 @5065 has 4 MA's), (160, 5185), (187, 5263), (191, 5275), (193, 5278), (247, 5371),

Gene: Megamind_14 Start: 5050, Stop: 5400, Start Num: 82

Candidate Starts for Megamind_14:

(Start: 82 @5050 has 257 MA's), (Start: 89 @5065 has 4 MA's), (160, 5185), (187, 5263), (191, 5275), (193, 5278), (247, 5371),

Gene: Melpomini_13 Start: 3949, Stop: 4314, Start Num: 82

Candidate Starts for Melpomini_13:

(Start: 82 @3949 has 257 MA's), (Start: 89 @3964 has 4 MA's), (160, 4099), (187, 4177), (191, 4189), (193, 4192), (247, 4285),

Gene: MetalQZJ_58 Start: 41225, Stop: 40836, Start Num: 85

Candidate Starts for MetalQZJ_58:

(10, 41426), (52, 41282), (55, 41279), (Start: 85 @41225 has 39 MA's), (Start: 89 @41213 has 4 MA's), (154, 41126), (160, 41093), (184, 41015), (192, 40991), (230, 40919),

Gene: MiaZeal_80 Start: 49238, Stop: 48840, Start Num: 85

Candidate Starts for MiaZeal_80:

(Start: 85 @49238 has 39 MA's), (Start: 89 @49226 has 4 MA's), (160, 49070), (188, 48986), (190, 48980), (191, 48977), (242, 48893),

Gene: MikeLiesIn_15 Start: 5050, Stop: 5400, Start Num: 82

Candidate Starts for MikeLiesIn_15:

(Start: 82 @5050 has 257 MA's), (Start: 89 @5065 has 4 MA's), (160, 5185), (187, 5263), (191, 5275), (193, 5278), (247, 5371),

Gene: Mikro_6 Start: 2758, Stop: 3150, Start Num: 84

Candidate Starts for Mikro_6:

(Start: 84 @2758 has 21 MA's), (Start: 89 @2770 has 4 MA's), (114, 2818), (117, 2824), (149, 2887), (160, 2941), (187, 3019), (191, 3031), (193, 3034),

Gene: MinionDave_75 Start: 47890, Stop: 48285, Start Num: 84

Candidate Starts for MinionDave_75:

(Start: 84 @47890 has 21 MA's), (Start: 89 @47902 has 4 MA's), (160, 48037), (182, 48115), (206, 48166), (221, 48190), (232, 48208), (238, 48223), (247, 48262),

Gene: MisterCuddles_76 Start: 48247, Stop: 48597, Start Num: 82

Candidate Starts for MisterCuddles_76:

(Start: 82 @48247 has 257 MA's), (Start: 89 @48262 has 4 MA's), (160, 48382),

Gene: MmasiCarm_51 Start: 45638, Stop: 45195, Start Num: 82

Candidate Starts for MmasiCarm_51:

(Start: 82 @45638 has 257 MA's), (Start: 89 @45626 has 4 MA's), (139, 45506), (151, 45476), (160, 45416), (167, 45380), (170, 45374), (245, 45242),

Gene: MoMoMixon_5 Start: 1605, Stop: 1997, Start Num: 84

Candidate Starts for MoMoMixon_5:

(Start: 84 @1605 has 21 MA's), (Start: 89 @1617 has 4 MA's), (114, 1665), (117, 1671), (149, 1734), (160, 1788), (187, 1866), (191, 1878), (193, 1881),

Gene: Momo_13 Start: 3970, Stop: 4335, Start Num: 82

Candidate Starts for Momo_13:

(Start: 82 @3970 has 257 MA's), (Start: 89 @3985 has 4 MA's), (160, 4120), (187, 4198), (191, 4210), (193, 4213), (247, 4306),

Gene: Moonbeam_87 Start: 50558, Stop: 50971, Start Num: 82

Candidate Starts for Moonbeam_87:

(26, 50435), (67, 50528), (Start: 71 @50537 has 1 MA's), (Start: 82 @50558 has 257 MA's), (110, 50615), (131, 50654), (160, 50750), (167, 50786), (170, 50792), (245, 50924),

Gene: Mopey_86 Start: 59779, Stop: 60174, Start Num: 103

Candidate Starts for Mopey_86:

(39, 59656), (Start: 103 @59779 has 18 MA's), (133, 59854), (157, 59926), (160, 59959), (167, 59995), (170, 60001), (245, 60133), (247, 60151),

Gene: Morizzled23_13 Start: 3949, Stop: 4314, Start Num: 82

Candidate Starts for Morizzled23_13:

(Start: 82 @3949 has 257 MA's), (Start: 89 @3964 has 4 MA's), (160, 4099), (187, 4177), (191, 4189), (193, 4192), (247, 4285),

Gene: Mortcellus_50 Start: 46245, Stop: 45802, Start Num: 82

Candidate Starts for Mortcellus_50:

(Start: 82 @46245 has 257 MA's), (Start: 89 @46233 has 4 MA's), (139, 46113), (151, 46083), (160, 46023), (167, 45987), (170, 45981), (245, 45849),

Gene: MosMoris_9 Start: 2524, Stop: 2901, Start Num: 80

Candidate Starts for MosMoris_9:

(Start: 80 @2524 has 3 MA's), (Start: 89 @2539 has 4 MA's), (160, 2674), (166, 2707), (175, 2728), (219, 2794), (253, 2878),

Gene: Mova_78 Start: 47116, Stop: 47487, Start Num: 83

Candidate Starts for Mova_78:

(Start: 83 @47116 has 32 MA's), (Start: 89 @47131 has 4 MA's), (160, 47251), (163, 47278), (171, 47296), (181, 47323), (216, 47392), (218, 47395), (236, 47431),

Gene: MrPhizzler_53 Start: 47284, Stop: 46895, Start Num: 82

Candidate Starts for MrPhizzler_53:

(Start: 82 @47284 has 257 MA's), (Start: 89 @47272 has 4 MA's), (160, 47116), (167, 47080), (170, 47074), (245, 46942),

Gene: Ms6_78 Start: 44647, Stop: 45045, Start Num: 63

Candidate Starts for Ms6_78:

(28, 44581), (31, 44593), (63, 44647), (128, 44740), (190, 44887), (193, 44893), (204, 44917), (247, 45016),

Gene: NEHalo_58 Start: 40784, Stop: 40425, Start Num: 82

Candidate Starts for NEHalo_58:

(8, 40985), (50, 40841), (51, 40838), (Start: 82 @40784 has 257 MA's), (Start: 89 @40772 has 4 MA's), (160, 40637), (167, 40601), (170, 40595), (245, 40463),

Gene: Naija_13 Start: 3970, Stop: 4335, Start Num: 82

Candidate Starts for Naija_13:

(Start: 82 @3970 has 257 MA's), (Start: 89 @3985 has 4 MA's), (160, 4120), (187, 4198), (191, 4210), (193, 4213), (247, 4306),

Gene: Nala_43 Start: 35539, Stop: 35096, Start Num: 82

Candidate Starts for Nala_43:

(43, 35611), (Start: 82 @35539 has 257 MA's), (Start: 89 @35527 has 4 MA's), (151, 35377), (160, 35317), (167, 35281), (170, 35275), (245, 35143),

Gene: Napoleon13_13 Start: 3968, Stop: 4333, Start Num: 82

Candidate Starts for Napoleon13_13:

(Start: 82 @3968 has 257 MA's), (Start: 89 @3983 has 4 MA's), (160, 4118), (187, 4196), (191, 4208), (193, 4211), (247, 4304),

Gene: Nebkiss_54 Start: 36961, Stop: 36614, Start Num: 101

Candidate Starts for Nebkiss_54:

(87, 36994), (Start: 101 @36961 has 2 MA's), (159, 36841), (162, 36823),

Gene: NedWong_14 Start: 5050, Stop: 5400, Start Num: 82

Candidate Starts for NedWong_14:

(Start: 82 @5050 has 257 MA's), (Start: 89 @5065 has 4 MA's), (160, 5185), (187, 5263), (191, 5275), (193, 5278), (247, 5371),

Gene: Ngannou_13 Start: 3949, Stop: 4314, Start Num: 82

Candidate Starts for Ngannou_13:

(Start: 82 @3949 has 257 MA's), (Start: 89 @3964 has 4 MA's), (160, 4099), (187, 4177), (191, 4189), (193, 4192), (247, 4285),

Gene: Nidhogg_5 Start: 1605, Stop: 1997, Start Num: 84

Candidate Starts for Nidhogg_5:

(Start: 84 @1605 has 21 MA's), (Start: 89 @1617 has 4 MA's), (114, 1665), (117, 1671), (149, 1734), (160, 1788), (187, 1866), (191, 1878), (193, 1881),

Gene: NoodleTree_6 Start: 1759, Stop: 2151, Start Num: 84

Candidate Starts for NoodleTree_6:

(Start: 84 @1759 has 21 MA's), (Start: 89 @1771 has 4 MA's), (114, 1819), (117, 1825), (149, 1888), (160, 1942), (187, 2020), (191, 2032), (193, 2035),

Gene: Norm_14 Start: 5050, Stop: 5400, Start Num: 82

Candidate Starts for Norm_14:

(Start: 82 @5050 has 257 MA's), (Start: 89 @5065 has 4 MA's), (160, 5185), (187, 5263), (191, 5275), (193, 5278), (247, 5371),

Gene: NormanBulbieJr_75 Start: 48043, Stop: 48468, Start Num: 83

Candidate Starts for NormanBulbieJr_75:

(Start: 83 @48043 has 32 MA's), (Start: 89 @48058 has 4 MA's), (160, 48238), (188, 48322), (190, 48328), (191, 48331), (242, 48415),

Gene: NormanBulbieJr_80 Start: 49599, Stop: 49982, Start Num: 116

Candidate Starts for NormanBulbieJr_80:

(36, 49425), (37, 49434), (49, 49458), (60, 49476), (Start: 102 @49569 has 1 MA's), (107, 49578), (Start: 116 @49599 has 8 MA's), (169, 49785), (183, 49815), (199, 49851), (231, 49902),

Gene: Obutu_51 Start: 45593, Stop: 45150, Start Num: 82

Candidate Starts for Obutu_51:

(Start: 82 @45593 has 257 MA's), (Start: 89 @45581 has 4 MA's), (139, 45461), (151, 45431), (160, 45371), (167, 45335), (170, 45329), (245, 45197),

Gene: Ogopogo_85 Start: 48076, Stop: 48471, Start Num: 82

Candidate Starts for Ogopogo_85:

(48, 48034), (Start: 82 @48076 has 257 MA's), (Start: 89 @48088 has 4 MA's), (160, 48244), (166, 48277), (175, 48298), (219, 48364), (253, 48448),

Gene: Ohno789_61 Start: 41528, Stop: 41148, Start Num: 82

Candidate Starts for Ohno789_61:

(8, 41729), (50, 41585), (51, 41582), (Start: 82 @41528 has 257 MA's), (Start: 89 @41516 has 4 MA's), (160, 41360), (167, 41324), (170, 41318), (245, 41186),

Gene: OlympiaSaint_79 Start: 48822, Stop: 49202, Start Num: 82

Candidate Starts for OlympiaSaint_79:

(Start: 82 @48822 has 257 MA's), (Start: 89 @48837 has 4 MA's), (160, 48993), (187, 49071), (191, 49083), (193, 49086), (247, 49179),

Gene: Ovechkin_81 Start: 48812, Stop: 49225, Start Num: 82

Candidate Starts for Ovechkin_81:

(Start: 82 @48812 has 257 MA's), (Start: 89 @48827 has 4 MA's), (123, 48887), (157, 48959), (160, 48992), (199, 49088), (234, 49154), (245, 49178),

Gene: PLOT_85 Start: 59930, Stop: 60325, Start Num: 103

Candidate Starts for PLOT_85:

(39, 59807), (Start: 103 @59930 has 18 MA's), (133, 60005), (157, 60077), (160, 60110), (167, 60146), (170, 60152), (245, 60284), (247, 60302),

Gene: ParkTD_14 Start: 5050, Stop: 5400, Start Num: 82

Candidate Starts for ParkTD_14:

(Start: 82 @5050 has 257 MA's), (Start: 89 @5065 has 4 MA's), (160, 5185), (187, 5263), (191, 5275), (193, 5278), (247, 5371),

Gene: Pat3_42 Start: 34357, Stop: 33938, Start Num: 85

Candidate Starts for Pat3_42:

(69, 34378), (73, 34366), (Start: 85 @34357 has 39 MA's), (Start: 89 @34345 has 4 MA's), (160, 34171), (199, 34069),

Gene: Patter_13 Start: 4002, Stop: 4352, Start Num: 89

Candidate Starts for Patter_13:

(Start: 82 @3987 has 257 MA's), (Start: 89 @4002 has 4 MA's), (160, 4137), (187, 4215), (191, 4227), (193, 4230), (247, 4323),

Gene: Penelope2018_84 Start: 59705, Stop: 60100, Start Num: 103

Candidate Starts for Penelope2018_84:

(39, 59582), (Start: 103 @59705 has 18 MA's), (133, 59780), (157, 59852), (160, 59885), (167, 59921), (170, 59927), (245, 60059), (247, 60077),

Gene: Peterson_65 Start: 43369, Stop: 42962, Start Num: 82

Candidate Starts for Peterson_65:

(8, 43570), (50, 43426), (51, 43423), (Start: 82 @43369 has 257 MA's), (Start: 89 @43357 has 4 MA's), (119, 43318), (158, 43216), (178, 43138), (211, 43084), (239, 43051), (244, 43042), (252, 42994),

Gene: Peterson_79 Start: 49024, Stop: 48623, Start Num: 85

Candidate Starts for Peterson_79:

(Start: 85 @49024 has 39 MA's), (Start: 89 @49012 has 4 MA's), (129, 48949), (134, 48940), (160, 48847), (172, 48805), (225, 48709), (247, 48652),

Gene: Petruccio_60 Start: 40166, Stop: 39780, Start Num: 85

Candidate Starts for Petruccio_60:

(Start: 85 @40166 has 39 MA's), (Start: 89 @40154 has 4 MA's), (160, 40034), (184, 39962), (192, 39938), (230, 39866), (247, 39803),

Gene: Phalconet_76 Start: 47337, Stop: 47762, Start Num: 83

Candidate Starts for Phalconet_76:

(Start: 83 @47337 has 32 MA's), (Start: 89 @47352 has 4 MA's), (125, 47436), (135, 47454), (160, 47532), (188, 47616), (190, 47622), (191, 47625), (242, 47709),

Gene: Phanphagia_77 Start: 48265, Stop: 48633, Start Num: 82

Candidate Starts for Phanphagia_77:

(Start: 82 @48265 has 257 MA's), (Start: 89 @48280 has 4 MA's), (160, 48400), (178, 48469), (189, 48490), (223, 48550), (247, 48607),

Gene: Phayeta_52 Start: 45475, Stop: 45032, Start Num: 82

Candidate Starts for Phayeta_52:

(Start: 82 @45475 has 257 MA's), (Start: 89 @45463 has 4 MA's), (139, 45343), (151, 45313), (160, 45253), (167, 45217), (170, 45211), (245, 45079),

Gene: PherrisBueller_60 Start: 39602, Stop: 39222, Start Num: 82

Candidate Starts for PherrisBueller_60:

(8, 39803), (50, 39659), (51, 39656), (Start: 82 @39602 has 257 MA's), (Start: 89 @39590 has 4 MA's), (160, 39434), (167, 39398), (170, 39392), (245, 39260),

Gene: PherrisBueller_78 Start: 45810, Stop: 45409, Start Num: 84

Candidate Starts for PherrisBueller_78:

(Start: 84 @45810 has 21 MA's), (160, 45618), (187, 45540), (191, 45528), (193, 45525), (247, 45432),

Gene: PhesterPhotato_83 Start: 48607, Stop: 48993, Start Num: 85

Candidate Starts for PhesterPhotato_83:

(Start: 85 @48607 has 39 MA's), (Start: 89 @48619 has 4 MA's), (160, 48739), (184, 48811), (192, 48835), (230, 48907),

Gene: PhesterPhotato_82 Start: 48233, Stop: 48610, Start Num: 81

Candidate Starts for PhesterPhotato_82:

(Start: 81 @48233 has 12 MA's), (Start: 89 @48248 has 4 MA's), (160, 48383), (190, 48470), (193, 48476), (204, 48500),

Gene: Philus_82 Start: 50521, Stop: 50901, Start Num: 82

Candidate Starts for Philus_82:

(Start: 82 @50521 has 257 MA's), (Start: 89 @50536 has 4 MA's), (160, 50692), (187, 50770), (191, 50782), (193, 50785), (247, 50878),

Gene: Phlegm_14 Start: 3970, Stop: 4335, Start Num: 82

Candidate Starts for Phlegm_14:

(Start: 82 @3970 has 257 MA's), (Start: 89 @3985 has 4 MA's), (160, 4120), (187, 4198), (191, 4210), (193, 4213), (247, 4306),

Gene: Phox_6 Start: 2748, Stop: 3188, Start Num: 59

Candidate Starts for Phox_6:

(Start: 59 @2748 has 16 MA's), (68, 2760), (136, 2880), (160, 2970), (172, 3012), (225, 3108), (235, 3132),

Gene: Phox_14 Start: 5699, Stop: 6049, Start Num: 82

Candidate Starts for Phox_14:

(Start: 82 @5699 has 257 MA's), (Start: 89 @5714 has 4 MA's), (160, 5834), (187, 5912), (191, 5924), (193, 5927), (247, 6020),

Gene: Phusco_13 Start: 3966, Stop: 4331, Start Num: 82

Candidate Starts for Phusco_13:

(Start: 82 @3966 has 257 MA's), (Start: 89 @3981 has 4 MA's), (160, 4116), (187, 4194), (191, 4206), (193, 4209), (247, 4302),

Gene: Pinkcreek_9 Start: 4088, Stop: 4453, Start Num: 82

Candidate Starts for Pinkcreek_9:

(Start: 82 @4088 has 257 MA's), (Start: 89 @4103 has 4 MA's), (160, 4238), (187, 4316), (191, 4328), (193, 4331), (247, 4424),

Gene: Pio_6 Start: 1759, Stop: 2151, Start Num: 84

Candidate Starts for Pio_6:

(Start: 84 @1759 has 21 MA's), (Start: 89 @1771 has 4 MA's), (114, 1819), (117, 1825), (149, 1888), (160, 1942), (187, 2020), (191, 2032), (193, 2035),

Gene: Pippy_75 Start: 47171, Stop: 47551, Start Num: 82

Candidate Starts for Pippy_75:

(Start: 82 @47171 has 257 MA's), (Start: 89 @47186 has 4 MA's), (123, 47246), (157, 47318), (160, 47351), (247, 47528),

Gene: Pivoine_13 Start: 3970, Stop: 4335, Start Num: 82

Candidate Starts for Pivoine_13:

(Start: 82 @3970 has 257 MA's), (Start: 89 @3985 has 4 MA's), (160, 4120), (187, 4198), (191, 4210), (193, 4213), (247, 4306),

Gene: Pleione_15 Start: 5050, Stop: 5400, Start Num: 82

Candidate Starts for Pleione_15:

(Start: 82 @5050 has 257 MA's), (Start: 89 @5065 has 4 MA's), (160, 5185), (187, 5263), (191, 5275), (193, 5278), (247, 5371),

Gene: Pollywog_86 Start: 51074, Stop: 51427, Start Num: 82

Candidate Starts for Pollywog_86:

(8, 50873), (50, 51017), (51, 51020), (Start: 82 @51074 has 257 MA's), (Start: 89 @51086 has 4 MA's), (160, 51206), (167, 51242), (170, 51248), (245, 51380),

Gene: PopTart_69 Start: 45137, Stop: 45511, Start Num: 82

Candidate Starts for PopTart_69:

(Start: 82 @45137 has 257 MA's), (Start: 89 @45152 has 4 MA's), (158, 45272), (160, 45287), (168, 45329), (223, 45425), (240, 45449),

Gene: Porcelain_79 Start: 49238, Stop: 48840, Start Num: 85

Candidate Starts for Porcelain_79:

(Start: 85 @49238 has 39 MA's), (Start: 89 @49226 has 4 MA's), (160, 49070), (188, 48986), (190, 48980), (191, 48977), (242, 48893),

Gene: Prager_84 Start: 59610, Stop: 60005, Start Num: 103

Candidate Starts for Prager_84:

(39, 59487), (Start: 103 @59610 has 18 MA's), (133, 59685), (157, 59757), (160, 59790), (167, 59826), (170, 59832), (245, 59964), (247, 59982),

Gene: Pringar_7 Start: 2135, Stop: 2512, Start Num: 82

Candidate Starts for Pringar_7:

(Start: 82 @2135 has 257 MA's), (Start: 89 @2147 has 4 MA's), (160, 2303), (187, 2381), (191, 2393), (193, 2396),

Gene: Priscilla_82 Start: 49697, Stop: 50080, Start Num: 116

Candidate Starts for Priscilla_82:

(36, 49523), (37, 49532), (49, 49556), (60, 49574), (Start: 102 @49667 has 1 MA's), (107, 49676), (Start: 116 @49697 has 8 MA's), (169, 49883), (183, 49913), (199, 49949), (231, 50000),

Gene: Priscilla_76 Start: 48141, Stop: 48566, Start Num: 83

Candidate Starts for Priscilla_76:

(Start: 83 @48141 has 32 MA's), (Start: 89 @48156 has 4 MA's), (160, 48336), (188, 48420), (190, 48426), (191, 48429), (242, 48513),

Gene: ProMouse_60 Start: 41014, Stop: 40655, Start Num: 113

Candidate Starts for ProMouse_60:

(8, 41281), (50, 41137), (51, 41134), (Start: 82 @41080 has 257 MA's), (113, 41014), (160, 40870), (167, 40834), (170, 40828), (245, 40696), (247, 40678),

Gene: PurduePete_14 Start: 5050, Stop: 5400, Start Num: 82

Candidate Starts for PurduePete_14:

(Start: 82 @5050 has 257 MA's), (Start: 89 @5065 has 4 MA's), (160, 5185), (187, 5263), (191, 5275), (193, 5278), (247, 5371),

Gene: QBert_6 Start: 2762, Stop: 3154, Start Num: 84

Candidate Starts for QBert_6:

(Start: 84 @2762 has 21 MA's), (Start: 89 @2774 has 4 MA's), (114, 2822), (117, 2828), (149, 2891), (160, 2945), (187, 3023), (191, 3035), (193, 3038),

Gene: Quasimodo_13 Start: 4969, Stop: 5334, Start Num: 82

Candidate Starts for Quasimodo_13:

(Start: 82 @4969 has 257 MA's), (Start: 89 @4984 has 4 MA's), (160, 5119), (187, 5197), (191, 5209), (193, 5212), (247, 5305),

Gene: Rabinovish_12 Start: 4755, Stop: 5105, Start Num: 82

Candidate Starts for Rabinovish_12:

(Start: 82 @4755 has 257 MA's), (Start: 89 @4770 has 4 MA's), (160, 4890), (187, 4968), (191, 4980), (193, 4983), (247, 5076),

Gene: Radiance_78 Start: 48851, Stop: 49231, Start Num: 82

Candidate Starts for Radiance_78:

(Start: 82 @48851 has 257 MA's), (Start: 89 @48866 has 4 MA's), (123, 48926), (157, 48998), (160, 49031), (247, 49208),

Gene: Raela_7 Start: 2533, Stop: 2922, Start Num: 83

Candidate Starts for Raela_7:

(Start: 83 @2533 has 32 MA's), (Start: 89 @2548 has 4 MA's), (160, 2668), (184, 2740), (192, 2764), (230, 2836), (247, 2899),

Gene: Rahel_13 Start: 3966, Stop: 4331, Start Num: 82

Candidate Starts for Rahel_13:

(Start: 82 @3966 has 257 MA's), (Start: 89 @3981 has 4 MA's), (160, 4116), (187, 4194), (191, 4206), (193, 4209), (247, 4302),

Gene: Raid_78 Start: 47398, Stop: 46961, Start Num: 84

Candidate Starts for Raid_78:

(Start: 84 @47398 has 21 MA's), (Start: 89 @47386 has 4 MA's), (123, 47302), (160, 47206), (182, 47128), (206, 47077), (221, 47053), (232, 47035), (238, 47020), (247, 46984),

Gene: Ramsey_83 Start: 50333, Stop: 50683, Start Num: 82

Candidate Starts for Ramsey_83:

(Start: 82 @50333 has 257 MA's), (Start: 89 @50348 has 4 MA's), (160, 50483), (247, 50660),

Gene: RedBird_81 Start: 50091, Stop: 50441, Start Num: 82

Candidate Starts for RedBird_81:

(Start: 82 @50091 has 257 MA's), (Start: 89 @50106 has 4 MA's), (160, 50241), (247, 50418),

Gene: RedRaider77_8 Start: 2530, Stop: 2889, Start Num: 82

Candidate Starts for RedRaider77_8:

(Start: 82 @2530 has 257 MA's), (Start: 89 @2545 has 4 MA's), (160, 2680), (187, 2758), (191, 2770), (193, 2773), (247, 2866), (251, 2884),

Gene: RedRaider77_10 Start: 3149, Stop: 3538, Start Num: 82

Candidate Starts for RedRaider77_10:

(Start: 82 @3149 has 257 MA's), (Start: 89 @3161 has 4 MA's), (160, 3317), (167, 3353), (170, 3359), (245, 3491),

Gene: Renaud18_89 Start: 49475, Stop: 49831, Start Num: 81

Candidate Starts for Renaud18_89:

(17, 49322), (19, 49337), (Start: 81 @49475 has 12 MA's), (Start: 89 @49490 has 4 MA's), (160, 49610), (177, 49670), (187, 49685), (201, 49709), (203, 49715), (224, 49748), (247, 49802),

Gene: Renaud18_72 Start: 42500, Stop: 42886, Start Num: 85

Candidate Starts for Renaud18_72:

(Start: 85 @42500 has 39 MA's), (Start: 89 @42512 has 4 MA's), (98, 42539), (140, 42584), (160, 42647), (163, 42674), (171, 42692), (181, 42719), (236, 42827),

Gene: Rialto_90 Start: 50654, Stop: 51067, Start Num: 82

Candidate Starts for Rialto_90:

(26, 50531), (67, 50624), (Start: 71 @50633 has 1 MA's), (Start: 82 @50654 has 257 MA's), (110, 50711), (131, 50750), (160, 50846), (167, 50882), (170, 50888), (245, 51020),

Gene: Rimmer_43 Start: 35365, Stop: 34928, Start Num: 82

Candidate Starts for Rimmer_43:

(43, 35437), (Start: 82 @35365 has 257 MA's), (Start: 89 @35353 has 4 MA's), (151, 35203), (160, 35143), (167, 35107), (170, 35101), (245, 34969),

Gene: Rimu_56 Start: 47304, Stop: 46915, Start Num: 82

Candidate Starts for Rimu_56:

(Start: 82 @47304 has 257 MA's), (Start: 89 @47292 has 4 MA's), (160, 47136), (167, 47100), (170, 47094), (245, 46962),

Gene: Ringer_61 Start: 42004, Stop: 41573, Start Num: 82

Candidate Starts for Ringer_61:

(7, 42205), (46, 42061), (48, 42058), (Start: 82 @42004 has 257 MA's), (Start: 89 @41992 has 4 MA's), (148, 41842), (150, 41839), (160, 41782), (187, 41704), (191, 41692), (193, 41689),

Gene: Rita_85 Start: 50514, Stop: 50948, Start Num: 74

Candidate Starts for Rita_85:

(12, 50340), (16, 50355), (18, 50364), (24, 50394), (Start: 74 @50514 has 1 MA's), (Start: 89 @50538 has 4 MA's), (160, 50718), (199, 50814), (234, 50880), (245, 50904), (247, 50925),

Gene: Rita1961_51 Start: 45594, Stop: 45151, Start Num: 82

Candidate Starts for Rita1961_51:

(Start: 82 @45594 has 257 MA's), (Start: 89 @45582 has 4 MA's), (139, 45462), (151, 45432), (160, 45372), (167, 45336), (170, 45330), (245, 45198),

Gene: Rizal_13 Start: 3965, Stop: 4330, Start Num: 82

Candidate Starts for Rizal_13:

(Start: 82 @3965 has 257 MA's), (Start: 89 @3980 has 4 MA's), (160, 4115), (187, 4193), (191, 4205), (193, 4208), (247, 4301),

Gene: RoMag_5 Start: 2623, Stop: 3003, Start Num: 89

Candidate Starts for RoMag_5:

(Start: 84 @2611 has 21 MA's), (Start: 89 @2623 has 4 MA's), (114, 2671), (117, 2677), (149, 2740), (160, 2794), (187, 2872), (191, 2884), (193, 2887),

Gene: Ronan_6 Start: 1749, Stop: 2189, Start Num: 59

Candidate Starts for Ronan_6:

(Start: 59 @1749 has 16 MA's), (68, 1761), (136, 1881), (160, 1971), (172, 2013), (225, 2109), (235, 2133),

Gene: Roots515_14 Start: 5049, Stop: 5399, Start Num: 82

Candidate Starts for Roots515_14:

(Start: 82 @5049 has 257 MA's), (Start: 89 @5064 has 4 MA's), (160, 5184), (187, 5262), (191, 5274), (193, 5277), (247, 5370),

Gene: Ruby_73 Start: 48248, Stop: 48598, Start Num: 82

Candidate Starts for Ruby_73:

(Start: 82 @48248 has 257 MA's), (Start: 89 @48263 has 4 MA's), (160, 48383),

Gene: SG4_76 Start: 47114, Stop: 47569, Start Num: 83

Candidate Starts for SG4_76:

(Start: 83 @47114 has 32 MA's), (Start: 89 @47129 has 4 MA's), (151, 47279), (152, 47282), (160, 47339), (188, 47423), (190, 47429), (191, 47432), (242, 47516),

Gene: STLscum_69 Start: 42972, Stop: 42544, Start Num: 85

Candidate Starts for STLscum_69:

(10, 43173), (52, 43029), (55, 43026), (Start: 85 @42972 has 39 MA's), (Start: 89 @42960 has 4 MA's), (160, 42804), (184, 42726), (192, 42702), (230, 42630),

Gene: SVoro_14 Start: 5044, Stop: 5394, Start Num: 82

Candidate Starts for SVoro_14:

(Start: 82 @5044 has 257 MA's), (Start: 89 @5059 has 4 MA's), (160, 5179), (187, 5257), (191, 5269), (193, 5272), (247, 5365),

Gene: Saal_78 Start: 49224, Stop: 49649, Start Num: 83

Candidate Starts for Saal_78:

(Start: 83 @49224 has 32 MA's), (Start: 89 @49239 has 4 MA's), (160, 49419), (188, 49503), (190, 49509), (191, 49512), (242, 49596),

Gene: Sabbb_88 Start: 48209, Stop: 48622, Start Num: 82

Candidate Starts for Sabbb_88:

(15, 48035), (17, 48044), (22, 48068), (26, 48086), (67, 48179), (Start: 71 @48188 has 1 MA's), (Start: 82 @48209 has 257 MA's), (110, 48266), (131, 48305), (160, 48401), (167, 48437), (170, 48443), (245, 48575),

Gene: Saints25_43 Start: 34897, Stop: 34421, Start Num: 83

Candidate Starts for Saints25_43:

(40, 34969), (Start: 83 @34897 has 32 MA's), (Start: 89 @34885 has 4 MA's), (151, 34735), (160, 34675), (184, 34603), (192, 34579), (230, 34507), (247, 34444),

Gene: Salacia_15 Start: 5050, Stop: 5400, Start Num: 82

Candidate Starts for Salacia_15:

(Start: 82 @5050 has 257 MA's), (Start: 89 @5065 has 4 MA's), (160, 5185), (187, 5263), (191, 5275), (193, 5278), (247, 5371),

Gene: Sandaddy_57 Start: 40445, Stop: 40086, Start Num: 82

Candidate Starts for Sandaddy_57:

(8, 40646), (50, 40502), (51, 40499), (Start: 82 @40445 has 257 MA's), (Start: 89 @40433 has 4 MA's), (160, 40298), (167, 40262), (170, 40256), (245, 40124),

Gene: SarFire_60 Start: 40901, Stop: 40488, Start Num: 85

Candidate Starts for SarFire_60:

(10, 41102), (52, 40958), (55, 40955), (Start: 85 @40901 has 39 MA's), (98, 40862), (143, 40817), (160, 40754), (184, 40676), (192, 40652), (230, 40580),

Gene: Sarma624_77 Start: 44943, Stop: 45320, Start Num: 82

Candidate Starts for Sarma624_77:

(Start: 82 @44943 has 257 MA's), (Start: 89 @44958 has 4 MA's), (160, 45114), (173, 45156), (210, 45222), (212, 45225), (247, 45294),

Gene: Sassafras_81 Start: 48408, Stop: 48758, Start Num: 82

Candidate Starts for Sassafras_81:

(Start: 82 @48408 has 257 MA's), (Start: 89 @48423 has 4 MA's), (160, 48558), (247, 48735),

Gene: SassyB_69 Start: 45137, Stop: 45511, Start Num: 82

Candidate Starts for SassyB_69:

(Start: 82 @45137 has 257 MA's), (Start: 89 @45152 has 4 MA's), (158, 45272), (160, 45287), (168, 45329), (223, 45425), (240, 45449),

Gene: Sauce_5 Start: 1609, Stop: 2001, Start Num: 84

Candidate Starts for Sauce_5:

(Start: 84 @1609 has 21 MA's), (Start: 89 @1621 has 4 MA's), (114, 1669), (117, 1675), (149, 1738), (160, 1792), (187, 1870), (191, 1882), (193, 1885),

Gene: ScoobyDoobyDoo_2 Start: 227, Stop: 613, Start Num: 82

Candidate Starts for ScoobyDoobyDoo_2:

(Start: 82 @227 has 257 MA's), (Start: 89 @239 has 4 MA's), (160, 395), (167, 431), (170, 437), (211, 515), (245, 569),

Gene: ScottMcG_15 Start: 5206, Stop: 5562, Start Num: 81

Candidate Starts for ScottMcG_15:

(Start: 81 @5206 has 12 MA's), (Start: 89 @5221 has 4 MA's), (160, 5341), (244, 5512), (247, 5533),

Gene: ScottMcG_5 Start: 1605, Stop: 1997, Start Num: 84

Candidate Starts for ScottMcG_5:

(Start: 84 @1605 has 21 MA's), (Start: 89 @1617 has 4 MA's), (114, 1665), (117, 1671), (149, 1734), (160, 1788), (187, 1866), (191, 1878), (193, 1881),

Gene: Scowl_62 Start: 40833, Stop: 40453, Start Num: 82

Candidate Starts for Scowl_62:

(50, 40890), (51, 40887), (Start: 82 @40833 has 257 MA's), (Start: 89 @40821 has 4 MA's), (160, 40665), (167, 40629), (170, 40623), (245, 40491),

Gene: Sebata_7 Start: 2992, Stop: 3348, Start Num: 103

Candidate Starts for Sebata_7:

(76, 2941), (Start: 103 @2992 has 18 MA's), (108, 3004), (122, 3031), (146, 3076), (160, 3139), (187, 3217), (191, 3229), (193, 3232),

Gene: Shaqnato_6 Start: 1766, Stop: 2206, Start Num: 59

Candidate Starts for Shaqnato_6:

(Start: 59 @1766 has 16 MA's), (68, 1778), (136, 1898), (160, 1988), (172, 2030), (225, 2126), (235, 2150),

Gene: Shauna1_78 Start: 48515, Stop: 48883, Start Num: 82

Candidate Starts for Shauna1_78:

(Start: 82 @48515 has 257 MA's), (Start: 89 @48530 has 4 MA's), (160, 48650), (178, 48719), (189, 48740), (223, 48800), (247, 48857),

Gene: Shelob_17 Start: 6224, Stop: 6574, Start Num: 82

Candidate Starts for Shelob_17:

(Start: 82 @6224 has 257 MA's), (Start: 89 @6239 has 4 MA's), (160, 6359), (187, 6437), (191, 6449), (193, 6452), (247, 6545),

Gene: ShiaLabeouf_13 Start: 3966, Stop: 4331, Start Num: 82

Candidate Starts for ShiaLabeouf_13:

(Start: 82 @3966 has 257 MA's), (Start: 89 @3981 has 4 MA's), (160, 4116), (187, 4194), (191, 4206), (193, 4209), (247, 4302),

Gene: Shifa_10 Start: 4323, Stop: 4688, Start Num: 82

Candidate Starts for Shifa_10:

(Start: 82 @4323 has 257 MA's), (Start: 89 @4338 has 4 MA's), (160, 4473), (187, 4551), (191, 4563), (193, 4566), (247, 4659),

Gene: Shnickers_13 Start: 3966, Stop: 4331, Start Num: 82

Candidate Starts for Shnickers_13:

(Start: 82 @3966 has 257 MA's), (Start: 89 @3981 has 4 MA's), (160, 4116), (187, 4194), (191, 4206), (193, 4209), (247, 4302),

Gene: Shrimp_14 Start: 5054, Stop: 5404, Start Num: 82

Candidate Starts for Shrimp_14:

(Start: 82 @5054 has 257 MA's), (Start: 89 @5069 has 4 MA's), (160, 5189), (187, 5267), (191, 5279), (193, 5282), (247, 5375),

Gene: ShroomBoi_80 Start: 48740, Stop: 49138, Start Num: 57

Candidate Starts for ShroomBoi_80:

(Start: 57 @48740 has 1 MA's), (66, 48755), (160, 48911), (190, 48998), (193, 49004), (204, 49028),

Gene: SiSi_75 Start: 47345, Stop: 47695, Start Num: 82

Candidate Starts for SiSi_75:

(Start: 82 @47345 has 257 MA's), (Start: 89 @47360 has 4 MA's), (160, 47480),

Gene: SilverDipper_13 Start: 3970, Stop: 4335, Start Num: 82

Candidate Starts for SilverDipper_13:

(Start: 82 @3970 has 257 MA's), (Start: 89 @3985 has 4 MA's), (160, 4120), (187, 4198), (191, 4210), (193, 4213), (247, 4306),

Gene: Simpliphy_43 Start: 34882, Stop: 34496, Start Num: 85

Candidate Starts for Simpliphy_43:

(Start: 85 @34882 has 39 MA's), (Start: 89 @34870 has 4 MA's), (160, 34750), (184, 34678), (192, 34654), (230, 34582), (247, 34519),

Gene: SimranZ1_79 Start: 47570, Stop: 47956, Start Num: 82

Candidate Starts for SimranZ1_79:

(Start: 82 @47570 has 257 MA's), (Start: 89 @47585 has 4 MA's), (123, 47645), (157, 47717), (160, 47750), (209, 47852), (226, 47873), (235, 47897),

Gene: SkiPole_69 Start: 42424, Stop: 42029, Start Num: 82

Candidate Starts for SkiPole_69:

(6, 42634), (8, 42625), (50, 42481), (51, 42478), (Start: 82 @42424 has 257 MA's), (160, 42256), (166, 42223), (175, 42202), (219, 42136), (253, 42052),

Gene: SlippinJimmy_52 Start: 46376, Stop: 45933, Start Num: 82

Candidate Starts for SlippinJimmy_52:

(Start: 82 @46376 has 257 MA's), (Start: 89 @46364 has 4 MA's), (139, 46244), (151, 46214), (160, 46154), (167, 46118), (170, 46112), (245, 45980),

Gene: SmallFry_13 Start: 3966, Stop: 4331, Start Num: 82

Candidate Starts for SmallFry_13:

(Start: 82 @3966 has 257 MA's), (Start: 89 @3981 has 4 MA's), (160, 4116), (187, 4194), (191, 4206), (193, 4209), (247, 4302),

Gene: Smooch_23 Start: 10621, Stop: 10995, Start Num: 95

Candidate Starts for Smooch_23:

(52, 10534), (86, 10591), (Start: 95 @10621 has 1 MA's), (104, 10633), (111, 10645), (160, 10765), (188, 10849), (190, 10855), (191, 10858), (242, 10942),

Gene: Soile_53 Start: 47351, Stop: 46908, Start Num: 82

Candidate Starts for Soile_53:

(Start: 82 @47351 has 257 MA's), (Start: 89 @47339 has 4 MA's), (139, 47219), (151, 47189), (160, 47129), (167, 47093), (170, 47087), (245, 46955),

Gene: Sorpresa_58 Start: 40447, Stop: 40088, Start Num: 82

Candidate Starts for Sorpresa_58:

(8, 40648), (50, 40504), (51, 40501), (Start: 82 @40447 has 257 MA's), (Start: 89 @40435 has 4 MA's), (160, 40300), (167, 40264), (170, 40258), (245, 40126),

Gene: Soul22_81 Start: 46673, Stop: 47050, Start Num: 81

Candidate Starts for Soul22_81:

(Start: 81 @46673 has 12 MA's), (Start: 89 @46688 has 4 MA's), (160, 46808), (190, 46895), (193, 46901), (204, 46925), (236, 46988), (247, 47027),

Gene: Spartacus_85 Start: 51000, Stop: 51356, Start Num: 116

Candidate Starts for Spartacus_85:

(5, 50706), (14, 50739), (36, 50826), (37, 50835), (49, 50859), (60, 50877), (Start: 102 @50970 has 1 MA's), (107, 50979), (Start: 116 @51000 has 8 MA's), (126, 51039), (148, 51084), (160, 51147), (165, 51180), (166, 51183), (195, 51234), (201, 51240), (228, 51276), (233, 51285),

Gene: SpikeBT_59 Start: 40641, Stop: 40282, Start Num: 82

Candidate Starts for SpikeBT_59:

(8, 40842), (50, 40698), (51, 40695), (Start: 82 @40641 has 257 MA's), (Start: 89 @40629 has 4 MA's), (160, 40494), (167, 40458), (170, 40452), (245, 40320),

Gene: Sprinklers_13 Start: 4140, Stop: 4490, Start Num: 82

Candidate Starts for Sprinklers_13:

(Start: 82 @4140 has 257 MA's), (Start: 89 @4155 has 4 MA's), (160, 4275), (187, 4353), (191, 4365), (193, 4368), (247, 4461),

Gene: Sprinklers_6 Start: 1749, Stop: 2189, Start Num: 59

Candidate Starts for Sprinklers_6:

(Start: 59 @1749 has 16 MA's), (68, 1761), (136, 1881), (160, 1971), (172, 2013), (225, 2109), (235, 2133),

Gene: Spud_6 Start: 1759, Stop: 2151, Start Num: 84

Candidate Starts for Spud_6:

(Start: 84 @1759 has 21 MA's), (Start: 89 @1771 has 4 MA's), (114, 1819), (117, 1825), (149, 1888), (160, 1942), (187, 2020), (191, 2032), (193, 2035),

Gene: Squint_80 Start: 49357, Stop: 48959, Start Num: 85

Candidate Starts for Squint_80:

(Start: 85 @49357 has 39 MA's), (Start: 89 @49345 has 4 MA's), (160, 49189), (188, 49105), (190, 49099), (191, 49096), (242, 49012),

Gene: SrishMeg2525_14 Start: 5050, Stop: 5400, Start Num: 82

Candidate Starts for SrishMeg2525_14:

(Start: 82 @5050 has 257 MA's), (Start: 89 @5065 has 4 MA's), (160, 5185), (187, 5263), (191, 5275), (193, 5278), (247, 5371),

Gene: StAnnes_81 Start: 49578, Stop: 49967, Start Num: 83

Candidate Starts for StAnnes_81:

(Start: 83 @49578 has 32 MA's), (Start: 89 @49593 has 4 MA's), (160, 49713), (184, 49785), (192, 49809), (230, 49881), (247, 49944),

Gene: StrongArm_59 Start: 41777, Stop: 41397, Start Num: 82

Candidate Starts for StrongArm_59:

(50, 41834), (51, 41831), (Start: 82 @41777 has 257 MA's), (Start: 89 @41765 has 4 MA's), (160, 41609), (167, 41573), (170, 41567), (245, 41435),

Gene: Stubby_14 Start: 5456, Stop: 5821, Start Num: 82

Candidate Starts for Stubby_14:

(Start: 82 @5456 has 257 MA's), (Start: 89 @5471 has 4 MA's), (160, 5606), (187, 5684), (191, 5696), (193, 5699), (247, 5792),

Gene: StubbySaigey_13 Start: 3970, Stop: 4335, Start Num: 82

Candidate Starts for StubbySaigey_13:

(Start: 82 @3970 has 257 MA's), (Start: 89 @3985 has 4 MA's), (160, 4120), (187, 4198), (191, 4210), (193, 4213), (247, 4306),

Gene: SuperGrey_79 Start: 50245, Stop: 50601, Start Num: 82

Candidate Starts for SuperGrey_79:

(Start: 82 @50245 has 257 MA's), (Start: 89 @50260 has 4 MA's), (160, 50395), (247, 50572),

Gene: Superphikiman_77 Start: 48448, Stop: 48050, Start Num: 85

Candidate Starts for Superphikiman_77:

(Start: 85 @48448 has 39 MA's), (Start: 89 @48436 has 4 MA's), (160, 48280), (188, 48196), (190, 48190), (191, 48187), (242, 48103),

Gene: SwagPiggett_82 Start: 50360, Stop: 50785, Start Num: 83

Candidate Starts for SwagPiggett_82:

(Start: 83 @50360 has 32 MA's), (Start: 89 @50375 has 4 MA's), (160, 50555), (188, 50639), (190, 50645), (191, 50648), (242, 50732),

Gene: SwainyDoc_51 Start: 45606, Stop: 45163, Start Num: 82

Candidate Starts for SwainyDoc_51:

(Start: 82 @45606 has 257 MA's), (Start: 89 @45594 has 4 MA's), (139, 45474), (151, 45444), (160, 45384), (167, 45348), (170, 45342), (245, 45210),

Gene: TDanisky_93 Start: 48927, Stop: 49307, Start Num: 82

Candidate Starts for TDanisky_93:

(Start: 82 @48927 has 257 MA's), (160, 49092), (167, 49128), (170, 49134), (245, 49266),

Gene: Taj_85 Start: 49957, Stop: 50334, Start Num: 83

Candidate Starts for Taj_85:

(Start: 83 @49957 has 32 MA's), (Start: 89 @49972 has 4 MA's), (140, 50050), (160, 50107), (188, 50191), (190, 50197), (191, 50200), (242, 50284),

Gene: Target_63 Start: 40851, Stop: 40456, Start Num: 82

Candidate Starts for Target_63:

(8, 41052), (50, 40908), (51, 40905), (Start: 82 @40851 has 257 MA's), (Start: 89 @40839 has 4 MA's), (160, 40683), (166, 40650), (175, 40629), (219, 40563), (253, 40479),

Gene: Target_79 Start: 46689, Stop: 46291, Start Num: 85

Candidate Starts for Target_79:

(Start: 85 @46689 has 39 MA's), (Start: 89 @46677 has 4 MA's), (160, 46521), (174, 46467), (180, 46458), (204, 46410), (207, 46404), (230, 46368), (240, 46350), (247, 46314),

Gene: Teardrop_13 Start: 3966, Stop: 4331, Start Num: 82

Candidate Starts for Teardrop_13:

(Start: 82 @3966 has 257 MA's), (Start: 89 @3981 has 4 MA's), (160, 4116), (187, 4194), (191, 4206), (193, 4209), (247, 4302),

Gene: Teodoridan_77 Start: 45969, Stop: 45598, Start Num: 84

Candidate Starts for Teodoridan_77:

(Start: 84 @45969 has 21 MA's), (Start: 89 @45957 has 4 MA's), (105, 45921), (141, 45879), (153, 45855), (160, 45813), (191, 45723), (193, 45720), (242, 45657), (248, 45621),

Gene: Thibault_65 Start: 47312, Stop: 46869, Start Num: 82

Candidate Starts for Thibault_65:

(Start: 82 @47312 has 257 MA's), (151, 47150), (152, 47147), (160, 47090), (167, 47054), (170, 47048), (245, 46916),

Gene: Thor_60 Start: 40259, Stop: 39846, Start Num: 85

Candidate Starts for Thor_60:

(10, 40460), (52, 40316), (55, 40313), (Start: 85 @40259 has 39 MA's), (98, 40220), (143, 40175), (160, 40112), (184, 40034), (192, 40010), (230, 39938),

Gene: Thoth_84 Start: 59759, Stop: 60154, Start Num: 103

Candidate Starts for Thoth_84:

(39, 59636), (Start: 103 @59759 has 18 MA's), (133, 59834), (157, 59906), (160, 59939), (167, 59975), (170, 59981), (245, 60113), (247, 60131),

Gene: TinyTerror_51 Start: 45641, Stop: 45198, Start Num: 82

Candidate Starts for TinyTerror_51:

(Start: 82 @45641 has 257 MA's), (Start: 89 @45629 has 4 MA's), (139, 45509), (151, 45479), (160, 45419), (167, 45383), (170, 45377), (245, 45245),

Gene: TinyTim_14 Start: 5050, Stop: 5400, Start Num: 82

Candidate Starts for TinyTim_14:

(Start: 82 @5050 has 257 MA's), (Start: 89 @5065 has 4 MA's), (160, 5185), (187, 5263), (191, 5275), (193, 5278), (247, 5371),

Gene: Tonenili_20 Start: 6077, Stop: 6418, Start Num: 115

Candidate Starts for Tonenili_20:

(Start: 115 @6077 has 1 MA's), (Start: 116 @6080 has 8 MA's), (121, 6092), (126, 6119), (130, 6128), (147, 6170), (154, 6194), (160, 6236), (173, 6287), (215, 6329),

Gene: Tootsieroll_77 Start: 49368, Stop: 49754, Start Num: 82

Candidate Starts for Tootsieroll_77:

(Start: 82 @49368 has 257 MA's), (Start: 89 @49383 has 4 MA's), (160, 49518), (177, 49584), (198, 49617), (200, 49623), (222, 49659), (227, 49668), (250, 49734),

Gene: Tortoise16_12 Start: 3966, Stop: 4331, Start Num: 82

Candidate Starts for Tortoise16_12:

(Start: 82 @3966 has 257 MA's), (Start: 89 @3981 has 4 MA's), (160, 4116), (187, 4194), (191, 4206), (193, 4209), (247, 4302),

Gene: Trinitium_13 Start: 3966, Stop: 4331, Start Num: 82

Candidate Starts for Trinitium_13:

(Start: 82 @3966 has 257 MA's), (Start: 89 @3981 has 4 MA's), (160, 4116), (187, 4194), (191, 4206), (193, 4209), (247, 4302),

Gene: Tripl3t_83 Start: 50856, Stop: 50458, Start Num: 85

Candidate Starts for Tripl3t_83:

(Start: 85 @50856 has 39 MA's), (160, 50664), (179, 50613), (194, 50589), (207, 50562), (247, 50481),

Gene: Turret_13 Start: 3949, Stop: 4314, Start Num: 82

Candidate Starts for Turret_13:

(Start: 82 @3949 has 257 MA's), (Start: 89 @3964 has 4 MA's), (160, 4099), (187, 4177), (191, 4189), (193, 4192), (247, 4285),

Gene: Tweety_79 Start: 48958, Stop: 49341, Start Num: 81

Candidate Starts for Tweety_79:

(Start: 81 @48958 has 12 MA's), (Start: 89 @48973 has 4 MA's), (160, 49093), (190, 49180), (193, 49186), (204, 49210), (247, 49312),

Gene: Tyke_8 Start: 2464, Stop: 2820, Start Num: 103

Candidate Starts for Tyke_8:

(Start: 103 @2464 has 18 MA's), (108, 2476), (122, 2503), (146, 2548), (160, 2611), (187, 2689), (191, 2701), (193, 2704),

Gene: Ukulele_42 Start: 35251, Stop: 34865, Start Num: 71

Candidate Starts for Ukulele_42:

(4, 35455), (21, 35371), (Start: 71 @35251 has 1 MA's), (Start: 84 @35227 has 21 MA's), (Start: 89 @35215 has 4 MA's), (160, 35095), (174, 35041), (178, 35032), (202, 34984), (205, 34978), (227,

34942), (237, 34924), (247, 34888),

Gene: ValleyTerrace_13 Start: 3970, Stop: 4335, Start Num: 82

Candidate Starts for ValleyTerrace_13:

(Start: 82 @3970 has 257 MA's), (Start: 89 @3985 has 4 MA's), (160, 4120), (187, 4198), (191, 4210), (193, 4213), (247, 4306),

Gene: VasuNzinga_9 Start: 2804, Stop: 3184, Start Num: 82

Candidate Starts for VasuNzinga_9:

(Start: 82 @2804 has 257 MA's), (Start: 89 @2816 has 4 MA's), (160, 2972), (167, 3008), (170, 3014), (245, 3146),

Gene: Velveteen_73 Start: 44943, Stop: 45320, Start Num: 82

Candidate Starts for Velveteen_73:

(Start: 82 @44943 has 257 MA's), (Start: 89 @44958 has 4 MA's), (160, 45114), (173, 45156), (210, 45222), (212, 45225), (247, 45294),

Gene: Veteran_71 Start: 47213, Stop: 47563, Start Num: 82

Candidate Starts for Veteran_71:

(Start: 82 @47213 has 257 MA's), (Start: 89 @47228 has 4 MA's), (160, 47348),

Gene: Visconti_85 Start: 59720, Stop: 60115, Start Num: 103

Candidate Starts for Visconti_85:

(39, 59597), (Start: 103 @59720 has 18 MA's), (133, 59795), (157, 59867), (160, 59900), (167, 59936), (170, 59942), (245, 60074), (247, 60092),

Gene: WaldoWhy_85 Start: 59683, Stop: 60078, Start Num: 103

Candidate Starts for WaldoWhy_85:

(39, 59560), (Start: 103 @59683 has 18 MA's), (133, 59758), (157, 59830), (160, 59863), (167, 59899), (170, 59905), (245, 60037), (247, 60055),

Gene: Wally_13 Start: 3970, Stop: 4335, Start Num: 82

Candidate Starts for Wally_13:

(Start: 82 @3970 has 257 MA's), (Start: 89 @3985 has 4 MA's), (160, 4120), (187, 4198), (191, 4210), (193, 4213), (247, 4306),

Gene: Wee_84 Start: 50033, Stop: 50410, Start Num: 83

Candidate Starts for Wee_84:

(Start: 83 @50033 has 32 MA's), (Start: 89 @50048 has 4 MA's), (140, 50126), (160, 50183), (188, 50267), (190, 50273), (191, 50276), (242, 50360),

Gene: Whatsapiecost_73 Start: 43853, Stop: 44332, Start Num: 83

Candidate Starts for Whatsapiecost_73:

(Start: 83 @43853 has 32 MA's), (Start: 89 @43868 has 4 MA's), (151, 44018), (152, 44021), (160, 44078), (184, 44150), (192, 44174), (230, 44246), (247, 44309),

Gene: Whouxphf_84 Start: 50087, Stop: 50422, Start Num: 116

Candidate Starts for Whouxphf_84:

(1, 49742), (2, 49760), (5, 49793), (14, 49826), (36, 49913), (37, 49922), (44, 49934), (49, 49946), (56, 49955), (60, 49964), (Start: 102 @50057 has 1 MA's), (107, 50066), (Start: 116 @50087 has 8 MA's), (156, 50186), (160, 50219), (168, 50261), (217, 50327),

Gene: Willis_14 Start: 4975, Stop: 5340, Start Num: 82

Candidate Starts for Willis_14:

(Start: 82 @4975 has 257 MA's), (Start: 89 @4990 has 4 MA's), (160, 5125), (187, 5203), (191, 5215), (193, 5218), (247, 5311),

Gene: XFactor_74 Start: 47423, Stop: 47782, Start Num: 97

Candidate Starts for XFactor_74:

(Start: 97 @47423 has 1 MA's), (106, 47438), (160, 47558), (172, 47600), (225, 47696), (247, 47753),

Gene: Yassified_6 Start: 1770, Stop: 2210, Start Num: 59

Candidate Starts for Yassified_6:

(Start: 59 @1770 has 16 MA's), (68, 1782), (136, 1902), (160, 1992), (172, 2034), (225, 2130), (235, 2154),

Gene: Yassified_13 Start: 4163, Stop: 4537, Start Num: 82

Candidate Starts for Yassified_13:

(Start: 82 @4163 has 257 MA's), (Start: 89 @4178 has 4 MA's), (91, 4187), (105, 4214), (141, 4256), (153, 4280), (160, 4322), (191, 4412), (193, 4415), (247, 4508),

Gene: YemiJoy2021_14 Start: 5050, Stop: 5400, Start Num: 82

Candidate Starts for YemiJoy2021_14:

(Start: 82 @5050 has 257 MA's), (Start: 89 @5065 has 4 MA's), (160, 5185), (187, 5263), (191, 5275), (193, 5278), (247, 5371),

Gene: YoungMoneyMata_13 Start: 3968, Stop: 4333, Start Num: 82

Candidate Starts for YoungMoneyMata_13:

(Start: 82 @3968 has 257 MA's), (Start: 89 @3983 has 4 MA's), (160, 4118), (187, 4196), (191, 4208), (193, 4211), (247, 4304),

Gene: Youngblood_44 Start: 35976, Stop: 35539, Start Num: 82

Candidate Starts for Youngblood_44:

(43, 36048), (Start: 82 @35976 has 257 MA's), (Start: 89 @35964 has 4 MA's), (151, 35814), (160, 35754), (167, 35718), (170, 35712), (245, 35580),

Gene: Yucca_13 Start: 4972, Stop: 5322, Start Num: 82

Candidate Starts for Yucca_13:

(Start: 82 @4972 has 257 MA's), (Start: 89 @4987 has 4 MA's), (160, 5107), (187, 5185), (191, 5197), (193, 5200), (247, 5293),

Gene: Zakhe101_23 Start: 10681, Stop: 11073, Start Num: 85

Candidate Starts for Zakhe101_23:

(Start: 85 @10681 has 39 MA's), (160, 10813), (186, 10897), (208, 10951), (220, 10975), (227, 10987), (230, 10993), (243, 11017), (246, 11032), (247, 11050),

Gene: Zalkecks_15 Start: 5050, Stop: 5400, Start Num: 82

Candidate Starts for Zalkecks_15:

(Start: 82 @5050 has 257 MA's), (Start: 89 @5065 has 4 MA's), (160, 5185), (187, 5263), (191, 5275), (193, 5278), (247, 5371),

Gene: Zapner_87 Start: 47003, Stop: 47359, Start Num: 81

Candidate Starts for Zapner_87:

(Start: 81 @47003 has 12 MA's), (Start: 89 @47018 has 4 MA's), (160, 47138), (244, 47309), (247, 47330),

Gene: Zeeculate_77 Start: 48542, Stop: 48138, Start Num: 85

Candidate Starts for Zeeculate_77:

(Start: 85 @48542 has 39 MA's), (Start: 89 @48530 has 4 MA's), (118, 48467), (151, 48410), (160, 48368), (188, 48284), (190, 48278), (191, 48275), (242, 48191),

Gene: Zeenon_16 Start: 5051, Stop: 5401, Start Num: 82

Candidate Starts for Zeenon_16:

(Start: 82 @5051 has 257 MA's), (Start: 89 @5066 has 4 MA's), (160, 5186), (187, 5264), (191, 5276), (193, 5279), (247, 5372),

Gene: ZygoTaiga_15 Start: 5050, Stop: 5400, Start Num: 82

Candidate Starts for ZygoTaiga_15:

(Start: 82 @5050 has 257 MA's), (Start: 89 @5065 has 4 MA's), (160, 5185), (187, 5263), (191, 5275), (193, 5278), (247, 5371),