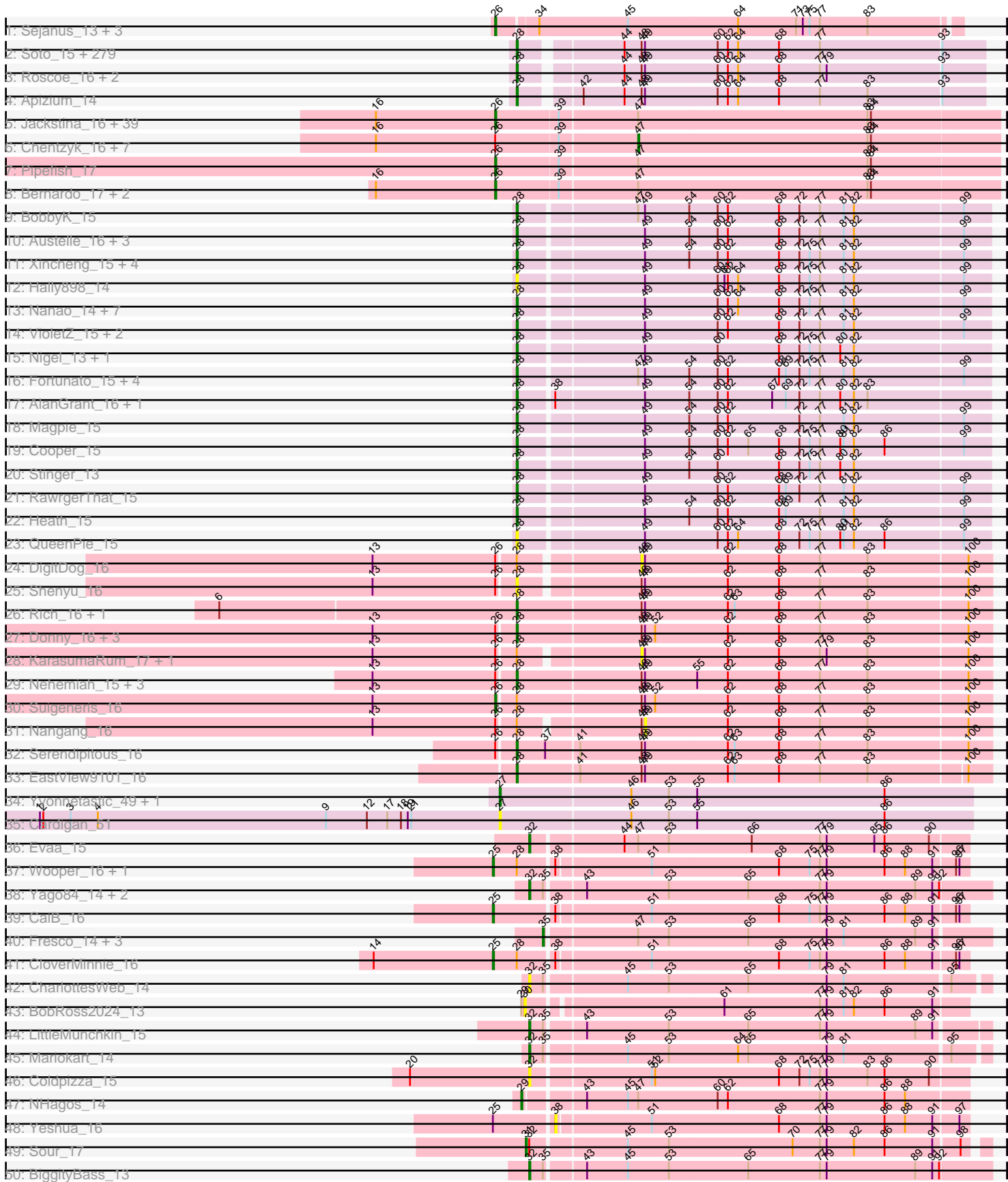
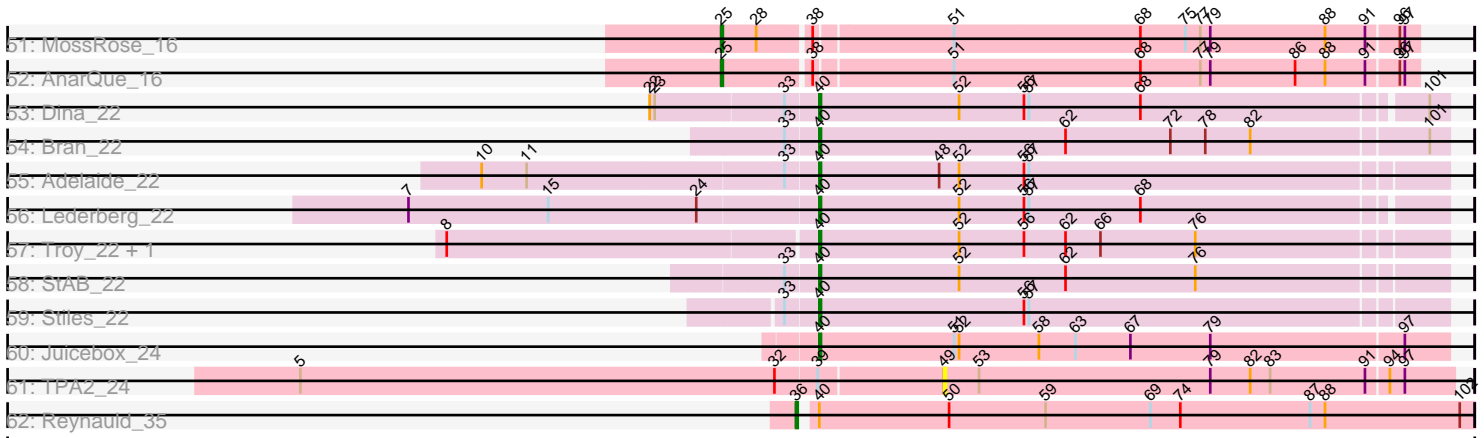


Pham 202576



Pham 202576



Note: Tracks are now grouped by subcluster and scaled. Switching in subcluster is indicated by changes in track color. Track scale is now set by default to display the region 30 bp upstream of start 1 to 30 bp downstream of the last possible start. If this default region is judged to be packed too tightly with annotated starts, the track will be further scaled to only show that region of the ORF with annotated starts. This action will be indicated by adding "Zoomed" to the title. For starts, yellow indicates the location of called starts comprised solely of Glimmer/GeneMark auto-annotations, green indicates the location of called starts with at least 1 manual gene annotation.

Pham 202576 Report

This analysis was run 01/18/25 on database version 583.

Pham number 202576 has 432 members, 55 are drafts.

Phages represented in each track:

- Track 1 : Sejanus_13, Mao1_12, Dori_13, Mask_13
- Track 2 : Soto_15, TallGrassMM_15, HSavage_15, Zaider_16, Simielle_14, Puhltonio_15, HenryJackson_14, Gyarad_0015, Struggle_14, Cornobble_14, Fringe_15, Vaishali24_14, Numberten_15, JacAttac_15, Orfeu_14, Carthage_14, Phamished_15, OliverWalter_15, Andre_15, Doddsville_15, OSmaximus_15, Mesmerelda_15, Dione_14, Gwilliam_15, Phergie_14, Yoshand_15, Etaye_15, Virgeve_14, Toni_14, Vivaldi_15, Plmatters_15, Melc17_15, Mcshane_14, Hocus_14, Khan1_15, Nacho_0015, Hartsy_15, CheetO_15, JakeO_14, Piglet_0014, Spartan300_15, Daffy_15, CamL_15, Morty_15, Antonia_14, DelRivs_14, Mosaic_14, Serpentine_0015, ABU_15, BlueHusk_15, Vista_15, KlimbOn_15, Hamish_15, Suffolk_15, Mikota_15, PhenghisKhan_14, Rimu_14, ThreeOh3D2_15, Grand2040_14, Sophia_14, FugateOSU_14, ImtiyazSitla_14, PhatLouie_15, Kikipoo_15, Jesabah_15, Solosis_14, Vortex_15, Mutante_14, Keitherie_15, PhrankReynolds_14, Crownjwl_15, Roy17_15, Serendipity_15, Aelin_14, Maskar_14, Inchworm_15, Labeouficaum_14, CharlieGBrown_14, Placalicious_14, MrPhizzler_14, BatteryCK_14, Swish_15, Dati_15, Haimas_15, Gwennie1_15, DirtJuice_15, Oline_14, Jiraiya_15, DuchessDung_14, Jillium_14, Nicole21_15, Surely_15, Hetaeria_15, Chorkpop_15, Slatt_15, Phleuron_14, Derpp_14, Pinkman_14, KLucky39_15, Burr_14, Selr12_15, DaddyDaniels_15, Valjean_15, Frankicide_15, Pipsqueak_15, Virapocalypse_15, UncleHowie_15, Childish_14, Basato_16, MiniBoss_15, Ricotta_14, Soile_15, Mulan_14, Prickles_15, Duggie_14, MichaelPhcott_14, Gophee_15, Schueller_14, AngelCake_14, Kailash_15, Iridessa_14, Horchata_15, Magic8_15, Mana_14, Morgushi_15, True_14, Zonia_15, MitKao_15, Timmi_14, Maru_14, Olak_14, Thunderbird_14, JangoPhett_15, PinheadLarry_15, DoesntMatter_15, Sigman_15, Durga_15, BlackStallion_15, SDcharge11_15, MelsMeow_14, Riggan_15, Bishoperium_14, Mecca_14, Mesh1_15, UAch1_15, AbsoluteMadLad_14, Fang_15, Iridoclysis_15, Quisquilliae_15, TomBombadil_15, Wallhey_14, Cher_14, Craff_15, Phipps_15, Kwadwo_14, Waterdiva_15, Manad_14, Weher20_15, PhrodoBaggins_14, Gareth_14, Kwksand96_14, Chute_14, JDog_14, Mag7_14, Robyn_14, Bluephacebaby_14, FriarPreacher_15, Cannibal_15, Scoot17C_15, Lasso_15, Sheila_15, Ashraf_14, Lopsy_14, LostAndPhound_14, Tooj_15, Schadenfreude_14, Freya_14, Haleema_14, Scrick_14, ProfessorX_15, Pacifista_14, Dingo_15, Lulumae_14, Chaelin_14, AltPhacts_15, Newman_15, Orion_15, Olive_15, Lulwa_15, Beaglebox_14, Charles1_15, Emiris_15, Podrick_15, PG1_15, Megatron_15, Cobra_15, QueenBeane_15, Telesworld_14, Giraffe_15, LeeLot_15, Omniscient_15, Murdoc_15, KingTut_14, Vaticameos_15, IsaacEli_15, ElvisPhasley_15, Potter_14,

Chunky_15, Pops_15, Held_15, Longacauda_14, Lego3393_15, CampRoach_15, Kimbrough_15, Lumine_14, Oosterbaan_15, Roliet_15, Anderson_15, Harvey_15, Tomlarah_15, Legolas_14, Nyala_14, Matalotodo_15, GeneCoco_15, LemonSlice_15, TyrionL_14, Phareon_15, Pherdinand_15, Chah_15, SilverBell_15, Inverness_15, Caspiroi_16, RedMaple_14, Hertubise_15, Jiminy_14, Squid_15, Fozzie_14, Banjo_14, Samaymay_15, Zelda_15, EmpTee_15, Badfish_15, DonSancho_14, MRabcd_14, Adriana_15, HighStump_14, Thora_15, Windsor_14, LasagnaCat_15, Altwerkus_14, Eremos_15, LuckyMarjie_14, Daka_15, Katniss_15, Orwigg_15, Dice_14, FluffyNinja_15, Buckeye_15, Colbert_15, Trypo_15, Xavier_14, Brilliant_15, Veritas_14, Skippy_15, Coletti_14, Usavi_15, Kahve_14, LeiMonet_15, Swiphy_15, Phunky_15, Squiggle_15, YouGoGlencoco_15, Eugenia_15, Cosmolli16_14, ShiVal_15, KingVeVeVe_15, Megamind20_15, Kloppinator_15, PhatCats2014_15, Nathan_16

- Track 3 : Roscoe_16, Boehler_15, SassyCat97_14
- Track 4 : Apizium_14
- Track 5 : Jackstina_16, SynergyX_17, GlenHope_18, RagingRooster_17, Audrey_17, Compostia_18, Yinz_17, Neos5_17, Chalmers_17, Corofin_17, Briakila_17, Heathcliff_17, Baloo_17, Kronus_16, Halfpint_16, Daisy_17, Athena_18, RomaT_17, Nozo_17, ChaChing_17, Gervas_17, Philly_16, Rita1961_17, Morty007_17, Mortcellus_16, Casbah_16, Kamiyu_17, Marley1013_17, OrangeOswald_17, Phlyer_17, Tydolla_17, LestyG_17, Chandler_17, Abinghost_17, Gadget_18, Deenasa_17, Devonte_17, Obutu_17, MmasiCarm_17, Phayeta_17
- Track 6 : Chentzyk_16, HarveySr_17, Ben11_16, SwainyDoc_17, Phaedrus_16, Glubnar_17, SlippinJimmy_17, TinyTerror_17
- Track 7 : Pipefish_17
- Track 8 : Bernardo_17, Yahalom_17, Akoma_17
- Track 9 : BobbyK_15
- Track 10 : Austelle_16, Hydro_15, Fanaw_15, Hangman_15
- Track 11 : Xincheng_15, JaguarMi_16, Mithril_15, Lolalove_15, BrownCNA_16
- Track 12 : Hally898_14
- Track 13 : Nanao_14, GinPorsche_14, Lambano_14, ChrisnMich_14, Epah_14, Poster_14, Antihero_14, Ahwei_14
- Track 14 : VioletZ_15, Waleliano_15, Zemanar_16
- Track 15 : Nigel_13, JAMaL_15
- Track 16 : Fortunato_15, Apex_15, Mudslide_15, Frederick_15, Prince_15
- Track 17 : AlanGrant_16, Vincenzo_16
- Track 18 : Magpie_15
- Track 19 : Cooper_15
- Track 20 : Stinger_13
- Track 21 : RawrgerThat_15
- Track 22 : Heath_15
- Track 23 : QueenPie_15
- Track 24 : DigitDog_16
- Track 25 : Shenyu_16
- Track 26 : Rich_16, Bae_16
- Track 27 : Donny_16, SirJeffery_16, Acadian_16, Rita130_16
- Track 28 : KarasumaRum_17, StinkyVeggy_17
- Track 29 : Nehemiah_15, Phelemich_16, Mysterious_16, Reprobate_16
- Track 30 : Suigeneris_16
- Track 31 : Nangang_16
- Track 32 : Serendipitous_16
- Track 33 : EastView9101_16
- Track 34 : Yvonnetastic_49, JonJames_51

- Track 35 : Cardigan_51
- Track 36 : Evaa_15
- Track 37 : Wooper_16, MakoManhole_16
- Track 38 : Yago84_14, Sisko_14, AnClar_14
- Track 39 : CaiB_16
- Track 40 : Fresco_14, Ligma_14, Axumite_14, Shatter_14
- Track 41 : CloverMinnie_16
- Track 42 : CharlottesWeb_14
- Track 43 : BobRoss2024_13
- Track 44 : LittleMunchkin_15
- Track 45 : Mariokart_14
- Track 46 : Coldpizza_15
- Track 47 : NHagos_14
- Track 48 : Yeshua_16
- Track 49 : Sour_17
- Track 50 : BiggityBass_13
- Track 51 : MossRose_16
- Track 52 : AnarQue_16
- Track 53 : Dina_22
- Track 54 : Bran_22
- Track 55 : Adelaide_22
- Track 56 : Lederberg_22
- Track 57 : Troy_22, SamW_22
- Track 58 : StAB_22
- Track 59 : Stiles_22
- Track 60 : Juicebox_24
- Track 61 : TPA2_24
- Track 62 : Reynauld_35

Summary of Final Annotations (See graph section above for start numbers):

The start number called the most often in the published annotations is 28, it was called in 296 of the 377 non-draft genes in the pham.

Genes that call this "Most Annotated" start:

• ABU_15, AbsoluteMadLad_14, Acadian_16, Adriana_15, Aelin_14, Ahwei_14, AlanGrant_16, AltPhacts_15, Altwerkus_14, Anderson_15, Andre_15, AngelCake_14, Antihero_14, Antonia_14, Apex_15, Apizium_14, Ashraf_14, Austelle_16, Badfish_15, Bae_16, Banjo_14, Basato_16, BatteryCK_14, Beaglebox_14, Bishoperium_14, BlackStallion_15, BlueHusk_15, Bluephacebaby_14, BobbyK_15, Boehler_15, Brilliant_15, BrownCNA_16, Buckeye_15, Burr_14, CamL_15, CampRoach_15, Cannibal_15, Carthage_14, Caspiboi_16, Chaelin_14, Chah_15, Charles1_15, CharlieGBrown_14, CheetO_15, Cher_14, Childish_14, Chorkpop_15, ChrisnMich_14, Chunky_15, Chute_14, Cobra_15, Colbert_15, Coletti_14, Cooper_15, Cornobble_14, Cosmolli16_14, Craff_15, Crownjwl_15, DaddyDaniels_15, Daffy_15, Daka_15, Dati_15, DelRivs_14, Derpp_14, Dice_14, Dingo_15, Dione_14, DirtJuice_15, Doddsville_15, DoesntMatter_15, DonSanchon_14, Donny_16, DuchessDung_14, Duggie_14, Durga_15, EastView9101_16, ElvisPhasley_15, Emiris_15, EmpTee_15, Epah_14, Eremos_15, Etaye_15, Eugenia_15, Fanaw_15, Fang_15, FluffyNinja_15, Fortunato_15,

Fozzie_14, Frankicide_15, Frederick_15, Freya_14, FriarPreacher_15, Fringe_15, FugateOSU_14, Gareth_14, GeneCoco_15, GinPorsche_14, Giraffe_15, Gophee_15, Grand2040_14, Gwennie1_15, Gwilliam_15, Gyarad_0015, HSavage_15, Haimas_15, Haleema_14, Hally898_14, Hamish_15, Hangman_15, Hartsy_15, Harvey_15, Heath_15, Held_15, HenryJackson_14, Hertubise_15, Hetaeria_15, HighStump_14, Hocus_14, Horchata_15, Hydro_15, ImtiyazSitla_14, Inchworm_15, Inverness_15, Iridessa_14, Iridoclysis_15, IsaacEli_15, JAMaL_15, JDog_14, JacAttac_15, JaguarMi_16, JakeO_14, JangoPhett_15, Jesabah_15, Jillium_14, Jiminy_14, Jiraiya_15, KLucky39_15, Kahve_14, Kailash_15, Katniss_15, Keitherie_15, Khan1_15, Kikipoo_15, Kimbrough_15, KingTut_14, KingVeVeVe_15, KlimbOn_15, Kloppinator_15, Kwadwo_14, Kwksand96_14, Labeouficaum_14, Lambano_14, LasagnaCat_15, Lasso_15, LeeLot_15, Lego3393_15, Legolas_14, LeiMonet_15, LemonSlice_15, Lolalove_15, Longacauda_14, Lopsy_14, LostAndPhound_14, LuckyMarjie_14, Lulumae_14, Lulwa_15, Lumine_14, MRabcd_14, Mag7_14, Magic8_15, Maggie_15, Mana_14, Manad_14, Maru_14, Maskar_14, Matalotodo_15, Mcshane_14, Mecca_14, Megamind20_15, Megatron_15, Melc17_15, MelsMeow_14, Mesh1_15, Mesmerelda_15, MichaelPhcott_14, Mikota_15, MiniBoss_15, MitKao_15, Mithril_15, Morgushi_15, Morty_15, Mosaic_14, MrPhizzler_14, Mudslide_15, Mulan_14, Murdoc_15, Mutante_14, Mysterious_16, Nacho_0015, Nanao_14, Nathan_16, Nehemiah_15, Newman_15, Nicole21_15, Nigel_13, Numberben_15, Nyala_14, OSmaximus_15, Olak_14, Oline_14, Olive_15, OliverWalter_15, Omniscient_15, Oosterbaan_15, Orfeu_14, Orion_15, Orwigg_15, PG1_15, Pacifista_14, Phamished_15, Phareon_15, PhatCats2014_15, PhatLouie_15, Phelemich_16, PhenghisKhan_14, Pherdinand_15, Phergie_14, Phipps_15, Phleuron_14, PhrankReynolds_14, PhrodoBaggins_14, Phunky_15, Piglet_0014, PinheadLarry_15, Pinkman_14, Pipsqueak_15, Placalicious_14, Plmatters_15, Podrick_15, Pops_15, Poster_14, Potter_14, Prickles_15, Prince_15, ProfessorX_15, Puhltonio_15, QueenBeane_15, QueenPie_15, Quisquilliae_15, RawrgerThat_15, RedMaple_14, Reprobate_16, Rich_16, Ricotta_14, Riggan_15, Rimu_14, Rita130_16, Robyn_14, Roliet_15, Roscoe_16, Roy17_15, SDcharge11_15, Samaymay_15, SassyCat97_14, Schadenfreude_14, Schueller_14, Scoot17C_15, Scrick_14, Selr12_15, Serendipitous_16, Serendipity_15, Serpentine_0015, Sheila_15, Shenyu_16, ShiVal_15, Sigman_15, SilverBell_15, Simielle_14, SirJeffery_16, Skippy_15, Slatt_15, Soile_15, Solosis_14, Sophia_14, Soto_15, Spartan300_15, Squid_15, Squiggle_15, Stinger_13, Struggle_14, Suffolk_15, Surely_15, Swiphy_15, Swish_15, TallGrassMM_15, Telesworld_14, Thora_15, ThreeOh3D2_15, Thunderbird_14, Timmi_14, TomBombadil_15, Tomlarah_15, Toni_14, Tooj_15, True_14, Trypo_15, TyrionL_14, UAch1_15, UncleHowie_15, Usavi_15, Vaishali24_14, Valjean_15, Vaticameos_15, Veritas_14, Vincenzo_16, VioletZ_15, Virapocalypse_15, Virgeve_14, Vista_15, Vivaldi_15, Vortex_15, Waleliano_15, Wallhey_14, Waterdiva_15, Weher20_15, Windsor_14, Xavier_14, Xincheng_15, Yoshand_15, YouGoGlencoco_15, Zaider_16, Zelda_15, Zemanar_16, Zonia_15,

Genes that have the "Most Annotated" start but do not call it:

- CloverMinnie_16, DigitDog_16, KarasumaRum_17, MakoManhole_16, MossRose_16, Nangang_16, StinkyVeggy_17, Suigeneris_16, Wooper_16,

Genes that do not have the "Most Annotated" start:

- Abinghost_17, Adelaide_22, Akoma_17, AnClar_14, AnarQue_16, Athena_18, Audrey_17, Axumite_14, Baloo_17, Ben11_16, Bernardo_17, BiggityBass_13, BobRoss2024_13, Bran_22, Briakila_17, CaiB_16, Cardigan_51, Casbah_16, ChaChing_17, Chalmers_17, Chandler_17, CharlottesWeb_14, Chentzyk_16,

Coldpizza_15, Compostia_18, Corofin_17, Daisy_17, Deenasa_17, Devonte_17, Dina_22, Dori_13, Evaa_15, Fresco_14, Gadget_18, Gervas_17, GlenHope_18, Glubnar_17, Halfpint_16, HarveySr_17, Heathcliff_17, Jackstina_16, JonJames_51, Juicebox_24, Kamiyu_17, Kronus_16, Lederberg_22, LestyG_17, Ligma_14, LittleMunchkin_15, Mao1_12, Mariokart_14, Marley1013_17, Mask_13, MmasiCarm_17, Mortcellus_16, Morty007_17, NHagos_14, Neos5_17, Nozo_17, Obutu_17, OrangeOswald_17, Phaedrus_16, Phayeta_17, Philly_16, Phlyer_17, Pipefish_17, RagingRooster_17, Reynauld_35, Rita1961_17, RomaT_17, SamW_22, Sejanus_13, Shatter_14, Sisko_14, SlippinJimmy_17, Sour_17, StAB_22, Stiles_22, SwainyDoc_17, SynergyX_17, TPA2_24, TinyTerror_17, Troy_22, Tydolla_17, Yago84_14, Yahalom_17, Yeshua_16, Yinz_17, Yvonnetastic_49,

Summary by start number:

Start 25:

- Found in 7 of 432 (1.6%) of genes in pham
- Manual Annotations of this start: 6 of 377
- Called 85.7% of time when present
- Phage (with cluster) where this start called: AnarQue_16 (DR), CaiB_16 (DR), CloverMinnie_16 (DR), MakoManhole_16 (DR), MossRose_16 (DR), Wooper_16 (DR),

Start 26:

- Found in 71 of 432 (16.4%) of genes in pham
- Manual Annotations of this start: 48 of 377
- Called 69.0% of time when present
- Phage (with cluster) where this start called: Abinghost_17 (B3), Akoma_17 (B3), Athena_18 (B3), Audrey_17 (B3), Baloo_17 (B3), Bernardo_17 (B3), Briakila_17 (B3), Casbah_16 (B3), ChaChing_17 (B3), Chalmers_17 (B3), Chandler_17 (B3), Compostia_18 (B3), Corofin_17 (B3), Daisy_17 (B3), Deenasa_17 (B3), Devonte_17 (B3), Dori_13 (AD), Gadget_18 (B3), Gervas_17 (B3), GlenHope_18 (B3), Halfpint_16 (B3), Heathcliff_17 (B3), Jackstina_16 (B3), Kamiyu_17 (B3), Kronus_16 (B3), LestyG_17 (B3), Mao1_12 (AD), Marley1013_17 (B3), Mask_13 (AD), MmasiCarm_17 (B3), Mortcellus_16 (B3), Morty007_17 (B3), Neos5_17 (B3), Nozo_17 (B3), Obutu_17 (B3), OrangeOswald_17 (B3), Phayeta_17 (B3), Philly_16 (B3), Phlyer_17 (B3), Pipefish_17 (B3), RagingRooster_17 (B3), Rita1961_17 (B3), RomaT_17 (B3), Sejanus_13 (AD), Suigeneris_16 (B5), SynergyX_17 (B3), Tydolla_17 (B3), Yahalom_17 (B3), Yinz_17 (B3),

Start 27:

- Found in 3 of 432 (0.7%) of genes in pham
- Manual Annotations of this start: 2 of 377
- Called 100.0% of time when present
- Phage (with cluster) where this start called: Cardigan_51 (DD), JonJames_51 (DD), Yvonnetastic_49 (DD),

Start 28:

- Found in 343 of 432 (79.4%) of genes in pham
- Manual Annotations of this start: 296 of 377
- Called 97.4% of time when present
- Phage (with cluster) where this start called: ABU_15 (B1), AbsoluteMadLad_14 (B1), Acadian_16 (B5), Adriana_15 (B1), Aelin_14 (B1), Ahwei_14 (B4), AlanGrant_16 (B4), AltPhacts_15 (B1), Altwerkus_14 (B1), Anderson_15 (B1), Andre_15 (B1),

AngelCake_14 (B1), Antihero_14 (B4), Antonia_14 (B1), Apex_15 (B4), Apizium_14 (B1), Ashraf_14 (B1), Austelle_16 (B4), Badfish_15 (B1), Bae_16 (B5), Banjo_14 (B1), Basato_16 (B1), BatteryCK_14 (B1), Beaglebox_14 (B1), Bishoperium_14 (B1), BlackStallion_15 (B1), BlueHusk_15 (B1), Bluephacebaby_14 (B1), BobbyK_15 (B4), Boehler_15 (B1), Brilliant_15 (B1), BrownCNA_16 (B4), Buckeye_15 (B1), Burr_14 (B1), CamL_15 (B1), CampRoach_15 (B1), Cannibal_15 (B1), Carthage_14 (B1), Caspiboi_16 (B1), Chaelin_14 (B1), Chah_15 (B1), Charles1_15 (B1), CharlieGBrown_14 (B1), CheetO_15 (B1), Cher_14 (B1), Childish_14 (B1), Chorkpop_15 (B1), ChrisnMich_14 (B4), Chunky_15 (B1), Chute_14 (B1), Cobra_15 (B1), Colbert_15 (B1), Coletti_14 (B1), Cooper_15 (B4), Cornobble_14 (B1), Cosmolli16_14 (B1), Craff_15 (B1), Crownjwl_15 (B1), DaddyDaniels_15 (B1), Daffy_15 (B1), Daka_15 (B1), Dati_15 (B1), DelRivs_14 (B1), Derpp_14 (B1), Dice_14 (B1), Dingo_15 (B1), Dione_14 (B1), DirtJuice_15 (B1), Doddsville_15 (B1), DoesntMatter_15 (B1), DonSanchon_14 (B1), Donny_16 (B5), DuchessDung_14 (B1), Duggie_14 (B1), Durga_15 (B1), EastView9101_16 (B5), ElvisPhasley_15 (B1), Emiris_15 (B1), EmpTee_15 (B1), Epah_14 (B4), Eremos_15 (B1), Etaye_15 (B1), Eugenia_15 (B1), Fanaw_15 (B4), Fang_15 (B1), FluffyNinja_15 (B1), Fortunato_15 (B4), Fozzie_14 (B1), Frankicide_15 (B1), Frederick_15 (B4), Freya_14 (B1), FriarPreacher_15 (B1), Fringe_15 (B1), FugateOSU_14 (B1), Gareth_14 (B1), GeneCoco_15 (B1), GinPorsche_14 (B4), Giraffe_15 (B1), Gophee_15 (B1), Grand2040_14 (B1), Gwennie1_15 (B1), Gwilliam_15 (B1), Gyarad_0015 (B1), HSavage_15 (B1), Haimas_15 (B1), Haleema_14 (B1), Hally898_14 (B4), Hamish_15 (B1), Hangman_15 (B4), Hartsy_15 (B1), Harvey_15 (B1), Heath_15 (B4), Held_15 (B1), HenryJackson_14 (B1), Hertubise_15 (B1), Hetaeria_15 (B1), HighStump_14 (B1), Hocus_14 (B1), Horchata_15 (B1), Hydro_15 (B4), ImtiyazSitla_14 (B1), Inchworm_15 (B1), Inverness_15 (B1), Iridessa_14 (B1), Iridoclysis_15 (B1), IsaacEli_15 (B1), JAMaL_15 (B4), JDog_14 (B1), JacAttac_15 (B1), JaguarMi_16 (B4), JakeO_14 (B1), JangoPhett_15 (B1), Jesabah_15 (B1), Jillium_14 (B1), Jiminy_14 (B1), Jiraiya_15 (B1), KLucky39_15 (B1), Kahve_14 (B1), Kailash_15 (B1), Katniss_15 (B1), Keitherie_15 (B1), Khan1_15 (B1), Kikipoo_15 (B1), Kimbrough_15 (B1), KingTut_14 (B1), KingVeVeVe_15 (B1), KlimbOn_15 (B1), Kloppinator_15 (B1), Kwadwo_14 (B1), Kwksand96_14 (B1), Labeouficaum_14 (B1), Lambano_14 (B4), LasagnaCat_15 (B1), Lasso_15 (B1), LeeLot_15 (B1), Lego3393_15 (B1), Legolas_14 (B1), LeiMonet_15 (B1), LemonSlice_15 (B1), Lolalove_15 (B4), Longacauda_14 (B1), Lopsy_14 (B1), LostAndPhound_14 (B1), LuckyMarjie_14 (B1), Lulumae_14 (B1), Lulwa_15 (B1), Lumine_14 (B1), MRabcd_14 (B1), Mag7_14 (B1), Magic8_15 (B1), Magpie_15 (B4), Mana_14 (B1), Manad_14 (B1), Maru_14 (B1), Maskar_14 (B1), Matalotodo_15 (B1), Mcshane_14 (B1), Mecca_14 (B1), Megamind20_15 (B1), Megatron_15 (B1), Melc17_15 (B1), MelsMeow_14 (B1), Mesh1_15 (B1), Mesmerelda_15 (B1), MichaelPhcott_14 (B1), Mikota_15 (B1), MiniBoss_15 (B1), MitKao_15 (B1), Mithril_15 (B4), Morgushi_15 (B1), Morty_15 (B1), Mosaic_14 (B1), MrPhizzler_14 (B1), Mudslide_15 (B4), Mulan_14 (B1), Murdoc_15 (B1), Mutante_14 (B1), Mysterious_16 (B5), Nacho_0015 (B1), Nanao_14 (B4), Nathan_16 (B1), Nehemiah_15 (B5), Newman_15 (B1), Nicole21_15 (B1), Nigel_13 (B4), Numberten_15 (B1), Nyala_14 (B1), OSmaximus_15 (B1), Olak_14 (B1), Oline_14 (B1), Olive_15 (B1), OliverWalter_15 (B1), Omniscient_15 (B1), Oosterbaan_15 (B1), Orfeu_14 (B1), Orion_15 (B1), Orwigg_15 (B1), PG1_15 (B1), Pacifista_14 (B1), Phamished_15 (B1), Phareon_15 (B1), PhatCats2014_15 (B1), PhatLouie_15 (B1), Phelemich_16 (B5), PhenghisKhan_14 (B1), Pherdinand_15 (B1), Phergie_14 (B1), Phipps_15 (B1), Phleuron_14 (B1), PhrankReynolds_14 (B1), PhrodoBaggins_14 (B1), Phunky_15 (B1), Piglet_0014 (B1), PinheadLarry_15 (B1), Pinkman_14 (B1), Pipsqueak_15 (B1), Placalicious_14 (B1), Plmatters_15 (B1), Podrick_15 (B1), Pops_15 (B1), Poster_14 (B4), Potter_14 (B1), Prickles_15 (B1),

Prince_15 (B4), ProfessorX_15 (B1), Puhltonio_15 (B1), QueenBeane_15 (B1), QueenPie_15 (B4), Quisquilliae_15 (B1), RawrgerThat_15 (B4), RedMaple_14 (B1), Reprobate_16 (B5), Rich_16 (B5), Ricotta_14 (B1), Riggan_15 (B1), Rimu_14 (B1), Rita130_16 (B5), Robyn_14 (B1), Roliet_15 (B1), Roscoe_16 (B1), Roy17_15 (B1), SDcharge11_15 (B1), Samaymay_15 (B1), SassyCat97_14 (B1), Schadenfreude_14 (B1), Schueller_14 (B1), Scoot17C_15 (B1), Scrick_14 (B1), Selr12_15 (B1), Serendipitous_16 (B5), Serendipity_15 (B1), Serpentine_0015 (B1), Sheila_15 (B1), Shenyu_16 (B5), ShiVal_15 (B1), Sigman_15 (B1), SilverBell_15 (B1), Simielle_14 (B1), SirJeffery_16 (B5), Skippy_15 (B1), Slatt_15 (B1), Soile_15 (B1), Solosis_14 (B1), Sophia_14 (B1), Soto_15 (B1), Spartan300_15 (B1), Squid_15 (B1), Squiggle_15 (B1), Stinger_13 (B4), Struggle_14 (B1), Suffolk_15 (B1), Surely_15 (B1), Swiphy_15 (B1), Swish_15 (B1), TallGrassMM_15 (B1), Telesworld_14 (B1), Thora_15 (B1), ThreeOh3D2_15 (B1), Thunderbird_14 (B1), Timmi_14 (B1), TomBombadil_15 (B1), Tomlarah_15 (B1), Toni_14 (B1), Tooj_15 (B1), True_14 (B1), Trypo_15 (B1), TyrionL_14 (B1), UAch1_15 (B1), UncleHowie_15 (B1), Usavi_15 (B1), Vaishali24_14 (B1), Valjean_15 (B1), Vaticameos_15 (B1), Veritas_14 (B1), Vincenzo_16 (B4), VioletZ_15 (B4), Virapocalypse_15 (B1), Virgeve_14 (B1), Vista_15 (B1), Vivaldi_15 (B1), Vortex_15 (B1), Waleliano_15 (B4), Wallhey_14 (B1), Waterdiva_15 (B1), Weher20_15 (B1), Windsor_14 (B1), Xavier_14 (B1), Xincheng_15 (B4), Yoshand_15 (B1), YouGoGlencoco_15 (B1), Zaider_16 (B1), Zelda_15 (B1), Zemanar_16 (B4), Zonia_15 (B1),

Start 29:

- Found in 2 of 432 (0.5%) of genes in pham
- Manual Annotations of this start: 1 of 377
- Called 50.0% of time when present
- Phage (with cluster) where this start called: NHagos_14 (DR),

Start 30:

- Found in 1 of 432 (0.2%) of genes in pham
- No Manual Annotations of this start.
- Called 100.0% of time when present
- Phage (with cluster) where this start called: BobRoss2024_13 (DR),

Start 31:

- Found in 1 of 432 (0.2%) of genes in pham
- Manual Annotations of this start: 1 of 377
- Called 100.0% of time when present
- Phage (with cluster) where this start called: Sour_17 (DR),

Start 32:

- Found in 11 of 432 (2.5%) of genes in pham
- Manual Annotations of this start: 7 of 377
- Called 81.8% of time when present
- Phage (with cluster) where this start called: AnClar_14 (DR), BiggityBass_13 (DR), CharlottesWeb_14 (DR), Coldpizza_15 (DR), Evaa_15 (DR), LittleMunchkin_15 (DR), Mariokart_14 (DR), Sisko_14 (DR), Yago84_14 (DR),

Start 35:

- Found in 11 of 432 (2.5%) of genes in pham
- Manual Annotations of this start: 4 of 377
- Called 36.4% of time when present

- Phage (with cluster) where this start called: Axumite_14 (DR), Fresco_14 (DR), Ligma_14 (DR), Shatter_14 (DR),

Start 36:

- Found in 1 of 432 (0.2%) of genes in pham
- Manual Annotations of this start: 1 of 377
- Called 100.0% of time when present
- Phage (with cluster) where this start called: Reynauld_35 (singleton),

Start 38:

- Found in 9 of 432 (2.1%) of genes in pham
- No Manual Annotations of this start.
- Called 11.1% of time when present
- Phage (with cluster) where this start called: Yeshua_16 (DR),

Start 40:

- Found in 10 of 432 (2.3%) of genes in pham
- Manual Annotations of this start: 9 of 377
- Called 90.0% of time when present
- Phage (with cluster) where this start called: Adelaide_22 (EP), Bran_22 (EP), Dina_22 (EP), Juicebox_24 (singleton), Lederberg_22 (EP), SamW_22 (EP), StAB_22 (EP), Stiles_22 (EP), Troy_22 (EP),

Start 47:

- Found in 64 of 432 (14.8%) of genes in pham
- Manual Annotations of this start: 2 of 377
- Called 12.5% of time when present
- Phage (with cluster) where this start called: Ben11_16 (B3), Chentzyk_16 (B3), Glubnar_17 (B3), HarveySr_17 (B3), Phaedrus_16 (B3), SlippinJimmy_17 (B3), SwainyDoc_17 (B3), TinyTerror_17 (B3),

Start 48:

- Found in 303 of 432 (70.1%) of genes in pham
- No Manual Annotations of this start.
- Called 1.0% of time when present
- Phage (with cluster) where this start called: DigitDog_16 (B5), KarasumaRum_17 (B5), StinkyVeggy_17 (B5),

Start 49:

- Found in 340 of 432 (78.7%) of genes in pham
- No Manual Annotations of this start.
- Called 0.6% of time when present
- Phage (with cluster) where this start called: Nangang_16 (B5), TPA2_24 (singleton),

Summary by clusters:

There are 9 clusters represented in this pham: singleton, AD, DD, B4, B5, B1, B3, DR, EP,

Info for manual annotations of cluster AD:

- Start number 26 was manually annotated 4 times for cluster AD.

Info for manual annotations of cluster B1:

- Start number 28 was manually annotated 263 times for cluster B1.

Info for manual annotations of cluster B3:

- Start number 26 was manually annotated 43 times for cluster B3.
- Start number 47 was manually annotated 2 times for cluster B3.

Info for manual annotations of cluster B4:

- Start number 28 was manually annotated 25 times for cluster B4.

Info for manual annotations of cluster B5:

- Start number 26 was manually annotated 1 time for cluster B5.
- Start number 28 was manually annotated 8 times for cluster B5.

Info for manual annotations of cluster DD:

- Start number 27 was manually annotated 2 times for cluster DD.

Info for manual annotations of cluster DR:

- Start number 25 was manually annotated 6 times for cluster DR.
- Start number 29 was manually annotated 1 time for cluster DR.
- Start number 31 was manually annotated 1 time for cluster DR.
- Start number 32 was manually annotated 7 times for cluster DR.
- Start number 35 was manually annotated 4 times for cluster DR.

Info for manual annotations of cluster EP:

- Start number 40 was manually annotated 8 times for cluster EP.

Gene Information:

Gene: ABU_15 Start: 13245, Stop: 13634, Start Num: 28

Candidate Starts for ABU_15:

(Start: 28 @13245 has 296 MA's), (44, 13323), (48, 13338), (49, 13341), (60, 13404), (62, 13413), (64, 13422), (68, 13458), (77, 13494), (93, 13599),

Gene: Abinghost_17 Start: 14566, Stop: 15000, Start Num: 26

Candidate Starts for Abinghost_17:

(16, 14461), (Start: 26 @14566 has 48 MA's), (39, 14620), (Start: 47 @14686 has 2 MA's), (83, 14887), (84, 14890),

Gene: AbsoluteMadLad_14 Start: 13249, Stop: 13638, Start Num: 28

Candidate Starts for AbsoluteMadLad_14:

(Start: 28 @13249 has 296 MA's), (44, 13327), (48, 13342), (49, 13345), (60, 13408), (62, 13417), (64, 13426), (68, 13462), (77, 13498), (93, 13603),

Gene: Acadian_16 Start: 14844, Stop: 15251, Start Num: 28

Candidate Starts for Acadian_16:

(13, 14721), (Start: 26 @14829 has 48 MA's), (Start: 28 @14844 has 296 MA's), (48, 14949), (49, 14952), (52, 14961), (62, 15024), (68, 15069), (77, 15105), (83, 15147), (100, 15231),

Gene: Adelaide_22 Start: 21613, Stop: 21981, Start Num: 40

Candidate Starts for Adelaide_22:

(10, 21418), (11, 21445), (33, 21595), (Start: 40 @21613 has 9 MA's), (48, 21685), (52, 21697), (56, 21736), (57, 21739),

Gene: Adriana_15 Start: 13247, Stop: 13636, Start Num: 28

Candidate Starts for Adriana_15:

(Start: 28 @13247 has 296 MA's), (44, 13325), (48, 13340), (49, 13343), (60, 13406), (62, 13415), (64, 13424), (68, 13460), (77, 13496), (93, 13601),

Gene: Aelin_14 Start: 12812, Stop: 13201, Start Num: 28

Candidate Starts for Aelin_14:

(Start: 28 @12812 has 296 MA's), (44, 12890), (48, 12905), (49, 12908), (60, 12971), (62, 12980), (64, 12989), (68, 13025), (77, 13061), (93, 13166),

Gene: Ahwei_14 Start: 13912, Stop: 14313, Start Num: 28

Candidate Starts for Ahwei_14:

(Start: 28 @13912 has 296 MA's), (49, 14014), (60, 14077), (62, 14086), (64, 14095), (68, 14131), (72, 14149), (75, 14158), (77, 14167), (81, 14188), (82, 14197), (99, 14290),

Gene: Akoma_17 Start: 14566, Stop: 15000, Start Num: 26

Candidate Starts for Akoma_17:

(16, 14461), (Start: 26 @14566 has 48 MA's), (39, 14620), (Start: 47 @14686 has 2 MA's), (83, 14887), (84, 14890),

Gene: AlanGrant_16 Start: 15755, Stop: 16156, Start Num: 28

Candidate Starts for AlanGrant_16:

(Start: 28 @15755 has 296 MA's), (38, 15782), (49, 15857), (54, 15896), (60, 15920), (62, 15929), (67, 15968), (69, 15980), (72, 15992), (77, 16010), (80, 16028), (82, 16040), (83, 16052),

Gene: AltPhacts_15 Start: 13242, Stop: 13631, Start Num: 28

Candidate Starts for AltPhacts_15:

(Start: 28 @13242 has 296 MA's), (44, 13320), (48, 13335), (49, 13338), (60, 13401), (62, 13410), (64, 13419), (68, 13455), (77, 13491), (93, 13596),

Gene: Altwerkus_14 Start: 12942, Stop: 13331, Start Num: 28

Candidate Starts for Altwerkus_14:

(Start: 28 @12942 has 296 MA's), (44, 13020), (48, 13035), (49, 13038), (60, 13101), (62, 13110), (64, 13119), (68, 13155), (77, 13191), (93, 13296),

Gene: AnClar_14 Start: 13769, Stop: 14164, Start Num: 32

Candidate Starts for AnClar_14:

(Start: 32 @13769 has 7 MA's), (Start: 35 @13781 has 4 MA's), (43, 13811), (53, 13883), (65, 13952), (77, 14015), (79, 14021), (89, 14099), (91, 14114), (92, 14120),

Gene: AnarQue_16 Start: 14378, Stop: 14779, Start Num: 25

Candidate Starts for AnarQue_16:

(Start: 25 @14378 has 6 MA's), (38, 14426), (51, 14504), (68, 14615), (77, 14651), (79, 14657), (86, 14708), (88, 14726), (91, 14750), (96, 14768), (97, 14771),

Gene: Anderson_15 Start: 13238, Stop: 13627, Start Num: 28

Candidate Starts for Anderson_15:

(Start: 28 @13238 has 296 MA's), (44, 13316), (48, 13331), (49, 13334), (60, 13397), (62, 13406), (64, 13415), (68, 13451), (77, 13487), (93, 13592),

Gene: Andre_15 Start: 13236, Stop: 13625, Start Num: 28

Candidate Starts for Andre_15:

(Start: 28 @13236 has 296 MA's), (44, 13314), (48, 13329), (49, 13332), (60, 13395), (62, 13404), (64, 13413), (68, 13449), (77, 13485), (93, 13590),

Gene: AngelCake_14 Start: 13250, Stop: 13639, Start Num: 28

Candidate Starts for AngelCake_14:

(Start: 28 @13250 has 296 MA's), (44, 13328), (48, 13343), (49, 13346), (60, 13409), (62, 13418), (64, 13427), (68, 13463), (77, 13499), (93, 13604),

Gene: Antihero_14 Start: 13912, Stop: 14313, Start Num: 28

Candidate Starts for Antihero_14:

(Start: 28 @13912 has 296 MA's), (49, 14014), (60, 14077), (62, 14086), (64, 14095), (68, 14131), (72, 14149), (75, 14158), (77, 14167), (81, 14188), (82, 14197), (99, 14290),

Gene: Antonia_14 Start: 12812, Stop: 13201, Start Num: 28

Candidate Starts for Antonia_14:

(Start: 28 @12812 has 296 MA's), (44, 12890), (48, 12905), (49, 12908), (60, 12971), (62, 12980), (64, 12989), (68, 13025), (77, 13061), (93, 13166),

Gene: Apex_15 Start: 15157, Stop: 15558, Start Num: 28

Candidate Starts for Apex_15:

(Start: 28 @15157 has 296 MA's), (Start: 47 @15253 has 2 MA's), (49, 15259), (54, 15298), (60, 15322), (62, 15331), (68, 15376), (69, 15382), (72, 15394), (75, 15403), (77, 15412), (81, 15433), (82, 15442), (99, 15535),

Gene: Apizium_14 Start: 12982, Stop: 13371, Start Num: 28

Candidate Starts for Apizium_14:

(Start: 28 @12982 has 296 MA's), (42, 13024), (44, 13060), (48, 13075), (49, 13078), (60, 13141), (62, 13150), (64, 13159), (68, 13195), (77, 13231), (83, 13273), (93, 13336),

Gene: Ashraf_14 Start: 12800, Stop: 13189, Start Num: 28

Candidate Starts for Ashraf_14:

(Start: 28 @12800 has 296 MA's), (44, 12878), (48, 12893), (49, 12896), (60, 12959), (62, 12968), (64, 12977), (68, 13013), (77, 13049), (93, 13154),

Gene: Athena_18 Start: 15329, Stop: 15763, Start Num: 26

Candidate Starts for Athena_18:

(16, 15224), (Start: 26 @15329 has 48 MA's), (39, 15383), (Start: 47 @15449 has 2 MA's), (83, 15650), (84, 15653),

Gene: Audrey_17 Start: 14566, Stop: 15000, Start Num: 26

Candidate Starts for Audrey_17:

(16, 14461), (Start: 26 @14566 has 48 MA's), (39, 14620), (Start: 47 @14686 has 2 MA's), (83, 14887), (84, 14890),

Gene: Austelle_16 Start: 15613, Stop: 16014, Start Num: 28

Candidate Starts for Austelle_16:

(Start: 28 @15613 has 296 MA's), (49, 15715), (54, 15754), (60, 15778), (62, 15787), (68, 15832), (72, 15850), (77, 15868), (81, 15889), (82, 15898), (99, 15991),

Gene: Axumite_14 Start: 12949, Stop: 13329, Start Num: 35

Candidate Starts for Axumite_14:

(Start: 35 @12949 has 4 MA's), (Start: 47 @13024 has 2 MA's), (53, 13051), (65, 13120), (79, 13189), (81, 13204), (89, 13267), (91, 13282),

Gene: Badfish_15 Start: 13271, Stop: 13660, Start Num: 28

Candidate Starts for Badfish_15:

(Start: 28 @13271 has 296 MA's), (44, 13349), (48, 13364), (49, 13367), (60, 13430), (62, 13439), (64, 13448), (68, 13484), (77, 13520), (93, 13625),

Gene: Bae_16 Start: 14990, Stop: 15397, Start Num: 28

Candidate Starts for Bae_16:

(6, 14732), (Start: 28 @14990 has 296 MA's), (48, 15095), (49, 15098), (62, 15170), (63, 15176), (68, 15215), (77, 15251), (83, 15293), (100, 15377),

Gene: Baloo_17 Start: 14566, Stop: 14997, Start Num: 26

Candidate Starts for Baloo_17:

(16, 14461), (Start: 26 @14566 has 48 MA's), (39, 14620), (Start: 47 @14686 has 2 MA's), (83, 14887), (84, 14890),

Gene: Banjo_14 Start: 12949, Stop: 13338, Start Num: 28

Candidate Starts for Banjo_14:

(Start: 28 @12949 has 296 MA's), (44, 13027), (48, 13042), (49, 13045), (60, 13108), (62, 13117), (64, 13126), (68, 13162), (77, 13198), (93, 13303),

Gene: Basato_16 Start: 13475, Stop: 13864, Start Num: 28

Candidate Starts for Basato_16:

(Start: 28 @13475 has 296 MA's), (44, 13553), (48, 13568), (49, 13571), (60, 13634), (62, 13643), (64, 13652), (68, 13688), (77, 13724), (93, 13829),

Gene: BatteryCK_14 Start: 12806, Stop: 13195, Start Num: 28

Candidate Starts for BatteryCK_14:

(Start: 28 @12806 has 296 MA's), (44, 12884), (48, 12899), (49, 12902), (60, 12965), (62, 12974), (64, 12983), (68, 13019), (77, 13055), (93, 13160),

Gene: Beaglebox_14 Start: 12966, Stop: 13355, Start Num: 28

Candidate Starts for Beaglebox_14:

(Start: 28 @12966 has 296 MA's), (44, 13044), (48, 13059), (49, 13062), (60, 13125), (62, 13134), (64, 13143), (68, 13179), (77, 13215), (93, 13320),

Gene: Ben11_16 Start: 14510, Stop: 14824, Start Num: 47

Candidate Starts for Ben11_16:

(16, 14285), (Start: 26 @14390 has 48 MA's), (39, 14444), (Start: 47 @14510 has 2 MA's), (83, 14711), (84, 14714),

Gene: Bernardo_17 Start: 14565, Stop: 14999, Start Num: 26

Candidate Starts for Bernardo_17:

(16, 14460), (Start: 26 @14565 has 48 MA's), (39, 14619), (Start: 47 @14685 has 2 MA's), (83, 14886), (84, 14889),

Gene: BiggityBass_13 Start: 12863, Stop: 13258, Start Num: 32

Candidate Starts for BiggityBass_13:

(Start: 32 @12863 has 7 MA's), (Start: 35 @12875 has 4 MA's), (43, 12905), (45, 12941), (53, 12977), (65, 13046), (77, 13109), (79, 13115), (89, 13193), (91, 13208), (92, 13214),

Gene: Bishoperium_14 Start: 12955, Stop: 13344, Start Num: 28

Candidate Starts for Bishoperium_14:

(Start: 28 @12955 has 296 MA's), (44, 13033), (48, 13048), (49, 13051), (60, 13114), (62, 13123), (64, 13132), (68, 13168), (77, 13204), (93, 13309),

Gene: BlackStallion_15 Start: 13257, Stop: 13646, Start Num: 28

Candidate Starts for BlackStallion_15:

(Start: 28 @13257 has 296 MA's), (44, 13335), (48, 13350), (49, 13353), (60, 13416), (62, 13425), (64, 13434), (68, 13470), (77, 13506), (93, 13611),

Gene: BlueHusk_15 Start: 13238, Stop: 13627, Start Num: 28

Candidate Starts for BlueHusk_15:

(Start: 28 @13238 has 296 MA's), (44, 13316), (48, 13331), (49, 13334), (60, 13397), (62, 13406), (64, 13415), (68, 13451), (77, 13487), (93, 13592),

Gene: Bluephacebaby_14 Start: 12955, Stop: 13344, Start Num: 28

Candidate Starts for Bluephacebaby_14:

(Start: 28 @12955 has 296 MA's), (44, 13033), (48, 13048), (49, 13051), (60, 13114), (62, 13123), (64, 13132), (68, 13168), (77, 13204), (93, 13309),

Gene: BobRoss2024_13 Start: 12784, Stop: 13155, Start Num: 30

Candidate Starts for BobRoss2024_13:

(Start: 29 @12781 has 1 MA's), (30, 12784), (61, 12943), (77, 13027), (79, 13033), (81, 13048), (82, 13057), (86, 13084), (91, 13126),

Gene: BobbyK_15 Start: 14976, Stop: 15377, Start Num: 28

Candidate Starts for BobbyK_15:

(Start: 28 @14976 has 296 MA's), (Start: 47 @15072 has 2 MA's), (49, 15078), (54, 15117), (60, 15141), (62, 15150), (68, 15195), (72, 15213), (77, 15231), (81, 15252), (82, 15261), (99, 15354),

Gene: Boehler_15 Start: 13265, Stop: 13654, Start Num: 28

Candidate Starts for Boehler_15:

(Start: 28 @13265 has 296 MA's), (44, 13343), (48, 13358), (49, 13361), (60, 13424), (62, 13433), (64, 13442), (68, 13478), (77, 13514), (79, 13520), (93, 13619),

Gene: Bran_22 Start: 21277, Stop: 21648, Start Num: 40

Candidate Starts for Bran_22:

(33, 21259), (Start: 40 @21277 has 9 MA's), (62, 21424), (72, 21487), (78, 21508), (82, 21535), (101, 21637),

Gene: Briakila_17 Start: 15331, Stop: 15765, Start Num: 26

Candidate Starts for Briakila_17:

(16, 15226), (Start: 26 @15331 has 48 MA's), (39, 15385), (Start: 47 @15451 has 2 MA's), (83, 15652), (84, 15655),

Gene: Brilliant_15 Start: 12959, Stop: 13348, Start Num: 28

Candidate Starts for Brilliant_15:

(Start: 28 @12959 has 296 MA's), (44, 13037), (48, 13052), (49, 13055), (60, 13118), (62, 13127), (64, 13136), (68, 13172), (77, 13208), (93, 13313),

Gene: BrownCNA_16 Start: 15230, Stop: 15631, Start Num: 28

Candidate Starts for BrownCNA_16:

(Start: 28 @15230 has 296 MA's), (49, 15332), (54, 15371), (60, 15395), (62, 15404), (68, 15449), (72, 15467), (75, 15476), (77, 15485), (81, 15506), (82, 15515), (99, 15608),

Gene: Buckeye_15 Start: 13273, Stop: 13662, Start Num: 28

Candidate Starts for Buckeye_15:

(Start: 28 @13273 has 296 MA's), (44, 13351), (48, 13366), (49, 13369), (60, 13432), (62, 13441), (64, 13450), (68, 13486), (77, 13522), (93, 13627),

Gene: Burr_14 Start: 12955, Stop: 13344, Start Num: 28

Candidate Starts for Burr_14:

(Start: 28 @12955 has 296 MA's), (44, 13033), (48, 13048), (49, 13051), (60, 13114), (62, 13123), (64, 13132), (68, 13168), (77, 13204), (93, 13309),

Gene: CaiB_16 Start: 14363, Stop: 14764, Start Num: 25

Candidate Starts for CaiB_16:

(Start: 25 @14363 has 6 MA's), (38, 14411), (51, 14489), (68, 14600), (75, 14627), (77, 14636), (79, 14642), (86, 14693), (88, 14711), (91, 14735), (96, 14753), (97, 14756),

Gene: CamL_15 Start: 13253, Stop: 13642, Start Num: 28

Candidate Starts for CamL_15:

(Start: 28 @13253 has 296 MA's), (44, 13331), (48, 13346), (49, 13349), (60, 13412), (62, 13421), (64, 13430), (68, 13466), (77, 13502), (93, 13607),

Gene: CampRoach_15 Start: 13244, Stop: 13633, Start Num: 28

Candidate Starts for CampRoach_15:

(Start: 28 @13244 has 296 MA's), (44, 13322), (48, 13337), (49, 13340), (60, 13403), (62, 13412), (64, 13421), (68, 13457), (77, 13493), (93, 13598),

Gene: Cannibal_15 Start: 13238, Stop: 13627, Start Num: 28

Candidate Starts for Cannibal_15:

(Start: 28 @13238 has 296 MA's), (44, 13316), (48, 13331), (49, 13334), (60, 13397), (62, 13406), (64, 13415), (68, 13451), (77, 13487), (93, 13592),

Gene: Cardigan_51 Start: 36197, Stop: 36607, Start Num: 27

Candidate Starts for Cardigan_51:

(1, 35792), (2, 35795), (3, 35819), (4, 35843), (9, 36044), (12, 36080), (17, 36098), (18, 36110), (19, 36116), (21, 36119), (Start: 27 @36197 has 2 MA's), (46, 36308), (53, 36341), (55, 36365), (86, 36530),

Gene: Carthage_14 Start: 12916, Stop: 13305, Start Num: 28

Candidate Starts for Carthage_14:

(Start: 28 @12916 has 296 MA's), (44, 12994), (48, 13009), (49, 13012), (60, 13075), (62, 13084), (64, 13093), (68, 13129), (77, 13165), (93, 13270),

Gene: Casbah_16 Start: 14418, Stop: 14852, Start Num: 26

Candidate Starts for Casbah_16:

(16, 14313), (Start: 26 @14418 has 48 MA's), (39, 14472), (Start: 47 @14538 has 2 MA's), (83, 14739), (84, 14742),

Gene: Caspiboi_16 Start: 12960, Stop: 13349, Start Num: 28

Candidate Starts for Caspiboi_16:

(Start: 28 @12960 has 296 MA's), (44, 13038), (48, 13053), (49, 13056), (60, 13119), (62, 13128), (64, 13137), (68, 13173), (77, 13209), (93, 13314),

Gene: ChaChing_17 Start: 14581, Stop: 14964, Start Num: 26

Candidate Starts for ChaChing_17:

(16, 14476), (Start: 26 @14581 has 48 MA's), (39, 14635), (Start: 47 @14701 has 2 MA's), (83, 14902), (84, 14905),

Gene: Chaelin_14 Start: 12920, Stop: 13309, Start Num: 28

Candidate Starts for Chaelin_14:

(Start: 28 @12920 has 296 MA's), (44, 12998), (48, 13013), (49, 13016), (60, 13079), (62, 13088), (64, 13097), (68, 13133), (77, 13169), (93, 13274),

Gene: Chah_15 Start: 13272, Stop: 13661, Start Num: 28

Candidate Starts for Chah_15:

(Start: 28 @13272 has 296 MA's), (44, 13350), (48, 13365), (49, 13368), (60, 13431), (62, 13440), (64, 13449), (68, 13485), (77, 13521), (93, 13626),

Gene: Chalmers_17 Start: 15374, Stop: 15808, Start Num: 26

Candidate Starts for Chalmers_17:

(16, 15269), (Start: 26 @15374 has 48 MA's), (39, 15428), (Start: 47 @15494 has 2 MA's), (83, 15695), (84, 15698),

Gene: Chandler_17 Start: 15340, Stop: 15774, Start Num: 26

Candidate Starts for Chandler_17:

(16, 15235), (Start: 26 @15340 has 48 MA's), (39, 15394), (Start: 47 @15460 has 2 MA's), (83, 15661), (84, 15664),

Gene: Charles1_15 Start: 13235, Stop: 13624, Start Num: 28

Candidate Starts for Charles1_15:

(Start: 28 @13235 has 296 MA's), (44, 13313), (48, 13328), (49, 13331), (60, 13394), (62, 13403), (64, 13412), (68, 13448), (77, 13484), (93, 13589),

Gene: CharlieGBrown_14 Start: 12824, Stop: 13213, Start Num: 28

Candidate Starts for CharlieGBrown_14:

(Start: 28 @12824 has 296 MA's), (44, 12902), (48, 12917), (49, 12920), (60, 12983), (62, 12992), (64, 13001), (68, 13037), (77, 13073), (93, 13178),

Gene: CharlottesWeb_14 Start: 12853, Stop: 13239, Start Num: 32

Candidate Starts for CharlottesWeb_14:

(Start: 32 @12853 has 7 MA's), (Start: 35 @12865 has 4 MA's), (45, 12931), (53, 12967), (65, 13036), (79, 13105), (81, 13120), (95, 13210),

Gene: CheetO_15 Start: 13253, Stop: 13642, Start Num: 28

Candidate Starts for CheetO_15:

(Start: 28 @13253 has 296 MA's), (44, 13331), (48, 13346), (49, 13349), (60, 13412), (62, 13421), (64, 13430), (68, 13466), (77, 13502), (93, 13607),

Gene: Chentzyk_16 Start: 14556, Stop: 14870, Start Num: 47

Candidate Starts for Chentzyk_16:

(16, 14331), (Start: 26 @14436 has 48 MA's), (39, 14490), (Start: 47 @14556 has 2 MA's), (83, 14757), (84, 14760),

Gene: Cher_14 Start: 12978, Stop: 13367, Start Num: 28

Candidate Starts for Cher_14:

(Start: 28 @12978 has 296 MA's), (44, 13056), (48, 13071), (49, 13074), (60, 13137), (62, 13146), (64, 13155), (68, 13191), (77, 13227), (93, 13332),

Gene: Childish_14 Start: 12966, Stop: 13355, Start Num: 28

Candidate Starts for Childish_14:

(Start: 28 @12966 has 296 MA's), (44, 13044), (48, 13059), (49, 13062), (60, 13125), (62, 13134), (64, 13143), (68, 13179), (77, 13215), (93, 13320),

Gene: Chorkpop_15 Start: 12978, Stop: 13367, Start Num: 28

Candidate Starts for Chorkpop_15:

(Start: 28 @12978 has 296 MA's), (44, 13056), (48, 13071), (49, 13074), (60, 13137), (62, 13146), (64, 13155), (68, 13191), (77, 13227), (93, 13332),

Gene: ChrisnMich_14 Start: 13912, Stop: 14313, Start Num: 28

Candidate Starts for ChrisnMich_14:

(Start: 28 @13912 has 296 MA's), (49, 14014), (60, 14077), (62, 14086), (64, 14095), (68, 14131), (72, 14149), (75, 14158), (77, 14167), (81, 14188), (82, 14197), (99, 14290),

Gene: Chunky_15 Start: 13265, Stop: 13654, Start Num: 28

Candidate Starts for Chunky_15:

(Start: 28 @13265 has 296 MA's), (44, 13343), (48, 13358), (49, 13361), (60, 13424), (62, 13433), (64, 13442), (68, 13478), (77, 13514), (93, 13619),

Gene: Chute_14 Start: 13268, Stop: 13657, Start Num: 28

Candidate Starts for Chute_14:

(Start: 28 @13268 has 296 MA's), (44, 13346), (48, 13361), (49, 13364), (60, 13427), (62, 13436), (64, 13445), (68, 13481), (77, 13517), (93, 13622),

Gene: CloverMinnie_16 Start: 14303, Stop: 14704, Start Num: 25

Candidate Starts for CloverMinnie_16:

(14, 14198), (Start: 25 @14303 has 6 MA's), (Start: 28 @14324 has 296 MA's), (38, 14351), (51, 14429), (68, 14540), (75, 14567), (77, 14576), (79, 14582), (86, 14633), (88, 14651), (91, 14675), (96, 14693), (97, 14696),

Gene: Cobra_15 Start: 13256, Stop: 13645, Start Num: 28

Candidate Starts for Cobra_15:

(Start: 28 @13256 has 296 MA's), (44, 13334), (48, 13349), (49, 13352), (60, 13415), (62, 13424), (64, 13433), (68, 13469), (77, 13505), (93, 13610),

Gene: Colbert_15 Start: 13256, Stop: 13645, Start Num: 28

Candidate Starts for Colbert_15:

(Start: 28 @13256 has 296 MA's), (44, 13334), (48, 13349), (49, 13352), (60, 13415), (62, 13424), (64, 13433), (68, 13469), (77, 13505), (93, 13610),

Gene: Coldpizza_15 Start: 14928, Stop: 15302, Start Num: 32

Candidate Starts for Coldpizza_15:

(20, 14823), (Start: 32 @14928 has 7 MA's), (51, 15027), (52, 15030), (68, 15138), (72, 15156), (75, 15165), (77, 15174), (79, 15180), (83, 15216), (86, 15231), (90, 15270),

Gene: Coletti_14 Start: 13268, Stop: 13657, Start Num: 28

Candidate Starts for Coletti_14:

(Start: 28 @13268 has 296 MA's), (44, 13346), (48, 13361), (49, 13364), (60, 13427), (62, 13436), (64, 13445), (68, 13481), (77, 13517), (93, 13622),

Gene: Compostia_18 Start: 14999, Stop: 15433, Start Num: 26

Candidate Starts for Compostia_18:

(16, 14894), (Start: 26 @14999 has 48 MA's), (39, 15053), (Start: 47 @15119 has 2 MA's), (83, 15320), (84, 15323),

Gene: Cooper_15 Start: 14020, Stop: 14421, Start Num: 28

Candidate Starts for Cooper_15:

(Start: 28 @14020 has 296 MA's), (49, 14122), (54, 14161), (60, 14185), (62, 14194), (65, 14212), (68, 14239), (72, 14257), (75, 14266), (77, 14275), (80, 14293), (81, 14296), (82, 14305), (86, 14332), (99, 14398),

Gene: Cornobble_14 Start: 12813, Stop: 13202, Start Num: 28

Candidate Starts for Cornobble_14:

(Start: 28 @12813 has 296 MA's), (44, 12891), (48, 12906), (49, 12909), (60, 12972), (62, 12981), (64, 12990), (68, 13026), (77, 13062), (93, 13167),

Gene: Corofin_17 Start: 14591, Stop: 15025, Start Num: 26

Candidate Starts for Corofin_17:

(16, 14486), (Start: 26 @14591 has 48 MA's), (39, 14645), (Start: 47 @14711 has 2 MA's), (83, 14912), (84, 14915),

Gene: Cosmolli16_14 Start: 12970, Stop: 13359, Start Num: 28

Candidate Starts for Cosmolli16_14:

(Start: 28 @12970 has 296 MA's), (44, 13048), (48, 13063), (49, 13066), (60, 13129), (62, 13138), (64, 13147), (68, 13183), (77, 13219), (93, 13324),

Gene: Craff_15 Start: 13259, Stop: 13648, Start Num: 28

Candidate Starts for Craff_15:

(Start: 28 @13259 has 296 MA's), (44, 13337), (48, 13352), (49, 13355), (60, 13418), (62, 13427), (64, 13436), (68, 13472), (77, 13508), (93, 13613),

Gene: Crownjwl_15 Start: 13026, Stop: 13415, Start Num: 28

Candidate Starts for Crownjwl_15:

(Start: 28 @13026 has 296 MA's), (44, 13104), (48, 13119), (49, 13122), (60, 13185), (62, 13194), (64, 13203), (68, 13239), (77, 13275), (93, 13380),

Gene: DaddyDaniels_15 Start: 12962, Stop: 13351, Start Num: 28

Candidate Starts for DaddyDaniels_15:

(Start: 28 @12962 has 296 MA's), (44, 13040), (48, 13055), (49, 13058), (60, 13121), (62, 13130), (64, 13139), (68, 13175), (77, 13211), (93, 13316),

Gene: Daffy_15 Start: 12978, Stop: 13367, Start Num: 28

Candidate Starts for Daffy_15:

(Start: 28 @12978 has 296 MA's), (44, 13056), (48, 13071), (49, 13074), (60, 13137), (62, 13146), (64, 13155), (68, 13191), (77, 13227), (93, 13332),

Gene: Daisy_17 Start: 14587, Stop: 15021, Start Num: 26

Candidate Starts for Daisy_17:

(16, 14482), (Start: 26 @14587 has 48 MA's), (39, 14641), (Start: 47 @14707 has 2 MA's), (83, 14908), (84, 14911),

Gene: Daka_15 Start: 13256, Stop: 13645, Start Num: 28

Candidate Starts for Daka_15:

(Start: 28 @13256 has 296 MA's), (44, 13334), (48, 13349), (49, 13352), (60, 13415), (62, 13424), (64, 13433), (68, 13469), (77, 13505), (93, 13610),

Gene: Dati_15 Start: 12966, Stop: 13355, Start Num: 28

Candidate Starts for Dati_15:

(Start: 28 @12966 has 296 MA's), (44, 13044), (48, 13059), (49, 13062), (60, 13125), (62, 13134), (64, 13143), (68, 13179), (77, 13215), (93, 13320),

Gene: Deenasa_17 Start: 15329, Stop: 15763, Start Num: 26

Candidate Starts for Deenasa_17:

(16, 15224), (Start: 26 @15329 has 48 MA's), (39, 15383), (Start: 47 @15449 has 2 MA's), (83, 15650), (84, 15653),

Gene: DelRivs_14 Start: 12965, Stop: 13354, Start Num: 28

Candidate Starts for DelRivs_14:

(Start: 28 @12965 has 296 MA's), (44, 13043), (48, 13058), (49, 13061), (60, 13124), (62, 13133), (64, 13142), (68, 13178), (77, 13214), (93, 13319),

Gene: Derpp_14 Start: 12812, Stop: 13201, Start Num: 28

Candidate Starts for Derpp_14:

(Start: 28 @12812 has 296 MA's), (44, 12890), (48, 12905), (49, 12908), (60, 12971), (62, 12980), (64, 12989), (68, 13025), (77, 13061), (93, 13166),

Gene: Devonte_17 Start: 14566, Stop: 15000, Start Num: 26

Candidate Starts for Devonte_17:

(16, 14461), (Start: 26 @14566 has 48 MA's), (39, 14620), (Start: 47 @14686 has 2 MA's), (83, 14887), (84, 14890),

Gene: Dice_14 Start: 12953, Stop: 13342, Start Num: 28

Candidate Starts for Dice_14:

(Start: 28 @12953 has 296 MA's), (44, 13031), (48, 13046), (49, 13049), (60, 13112), (62, 13121), (64, 13130), (68, 13166), (77, 13202), (93, 13307),

Gene: DigitDog_16 Start: 14925, Stop: 15227, Start Num: 48

Candidate Starts for DigitDog_16:

(13, 14706), (Start: 26 @14814 has 48 MA's), (Start: 28 @14829 has 296 MA's), (48, 14925), (49, 14928), (62, 15000), (68, 15045), (77, 15081), (83, 15123), (100, 15207),

Gene: Dina_22 Start: 21114, Stop: 21479, Start Num: 40

Candidate Starts for Dina_22:

(22, 21018), (23, 21021), (33, 21096), (Start: 40 @21114 has 9 MA's), (52, 21198), (56, 21237), (57, 21240), (68, 21306), (101, 21468),

Gene: Dingo_15 Start: 13238, Stop: 13627, Start Num: 28

Candidate Starts for Dingo_15:

(Start: 28 @13238 has 296 MA's), (44, 13316), (48, 13331), (49, 13334), (60, 13397), (62, 13406), (64, 13415), (68, 13451), (77, 13487), (93, 13592),

Gene: Dione_14 Start: 12954, Stop: 13343, Start Num: 28

Candidate Starts for Dione_14:

(Start: 28 @12954 has 296 MA's), (44, 13032), (48, 13047), (49, 13050), (60, 13113), (62, 13122), (64, 13131), (68, 13167), (77, 13203), (93, 13308),

Gene: DirtJuice_15 Start: 13241, Stop: 13630, Start Num: 28

Candidate Starts for DirtJuice_15:

(Start: 28 @13241 has 296 MA's), (44, 13319), (48, 13334), (49, 13337), (60, 13400), (62, 13409), (64, 13418), (68, 13454), (77, 13490), (93, 13595),

Gene: Doddsville_15 Start: 12966, Stop: 13355, Start Num: 28

Candidate Starts for Doddsville_15:

(Start: 28 @12966 has 296 MA's), (44, 13044), (48, 13059), (49, 13062), (60, 13125), (62, 13134), (64, 13143), (68, 13179), (77, 13215), (93, 13320),

Gene: DoesntMatter_15 Start: 13235, Stop: 13624, Start Num: 28

Candidate Starts for DoesntMatter_15:

(Start: 28 @13235 has 296 MA's), (44, 13313), (48, 13328), (49, 13331), (60, 13394), (62, 13403), (64, 13412), (68, 13448), (77, 13484), (93, 13589),

Gene: DonSanchon_14 Start: 12954, Stop: 13343, Start Num: 28

Candidate Starts for DonSanchon_14:

(Start: 28 @12954 has 296 MA's), (44, 13032), (48, 13047), (49, 13050), (60, 13113), (62, 13122), (64, 13131), (68, 13167), (77, 13203), (93, 13308),

Gene: Donny_16 Start: 14846, Stop: 15253, Start Num: 28

Candidate Starts for Donny_16:

(13, 14723), (Start: 26 @14831 has 48 MA's), (Start: 28 @14846 has 296 MA's), (48, 14951), (49, 14954), (52, 14963), (62, 15026), (68, 15071), (77, 15107), (83, 15149), (100, 15233),

Gene: Dori_13 Start: 11588, Stop: 11983, Start Num: 26

Candidate Starts for Dori_13:

(Start: 26 @11588 has 48 MA's), (34, 11621), (45, 11699), (64, 11795), (71, 11846), (73, 11852), (75, 11858), (77, 11867), (83, 11909),

Gene: DuchessDung_14 Start: 12806, Stop: 13195, Start Num: 28

Candidate Starts for DuchessDung_14:

(Start: 28 @12806 has 296 MA's), (44, 12884), (48, 12899), (49, 12902), (60, 12965), (62, 12974), (64, 12983), (68, 13019), (77, 13055), (93, 13160),

Gene: Duggie_14 Start: 12968, Stop: 13357, Start Num: 28

Candidate Starts for Duggie_14:

(Start: 28 @12968 has 296 MA's), (44, 13046), (48, 13061), (49, 13064), (60, 13127), (62, 13136), (64, 13145), (68, 13181), (77, 13217), (93, 13322),

Gene: Durga_15 Start: 13267, Stop: 13656, Start Num: 28

Candidate Starts for Durga_15:

(Start: 28 @13267 has 296 MA's), (44, 13345), (48, 13360), (49, 13363), (60, 13426), (62, 13435), (64, 13444), (68, 13480), (77, 13516), (93, 13621),

Gene: EastView9101_16 Start: 14852, Stop: 15256, Start Num: 28

Candidate Starts for EastView9101_16:

(Start: 28 @14852 has 296 MA's), (41, 14903), (48, 14957), (49, 14960), (62, 15032), (63, 15038), (68, 15077), (77, 15113), (83, 15155), (100, 15236),

Gene: ElvisPhasley_15 Start: 13266, Stop: 13655, Start Num: 28

Candidate Starts for ElvisPhasley_15:

(Start: 28 @13266 has 296 MA's), (44, 13344), (48, 13359), (49, 13362), (60, 13425), (62, 13434), (64, 13443), (68, 13479), (77, 13515), (93, 13620),

Gene: Emiris_15 Start: 13248, Stop: 13637, Start Num: 28

Candidate Starts for Emiris_15:

(Start: 28 @13248 has 296 MA's), (44, 13326), (48, 13341), (49, 13344), (60, 13407), (62, 13416), (64, 13425), (68, 13461), (77, 13497), (93, 13602),

Gene: EmpTee_15 Start: 13254, Stop: 13643, Start Num: 28

Candidate Starts for EmpTee_15:

(Start: 28 @13254 has 296 MA's), (44, 13332), (48, 13347), (49, 13350), (60, 13413), (62, 13422), (64, 13431), (68, 13467), (77, 13503), (93, 13608),

Gene: Epah_14 Start: 13912, Stop: 14313, Start Num: 28

Candidate Starts for Epah_14:

(Start: 28 @13912 has 296 MA's), (49, 14014), (60, 14077), (62, 14086), (64, 14095), (68, 14131), (72, 14149), (75, 14158), (77, 14167), (81, 14188), (82, 14197), (99, 14290),

Gene: Eremos_15 Start: 13253, Stop: 13642, Start Num: 28

Candidate Starts for Eremos_15:

(Start: 28 @13253 has 296 MA's), (44, 13331), (48, 13346), (49, 13349), (60, 13412), (62, 13421), (64, 13430), (68, 13466), (77, 13502), (93, 13607),

Gene: Etaye_15 Start: 13238, Stop: 13627, Start Num: 28

Candidate Starts for Etaye_15:

(Start: 28 @13238 has 296 MA's), (44, 13316), (48, 13331), (49, 13334), (60, 13397), (62, 13406), (64, 13415), (68, 13451), (77, 13487), (93, 13592),

Gene: Eugenia_15 Start: 13266, Stop: 13655, Start Num: 28

Candidate Starts for Eugenia_15:

(Start: 28 @13266 has 296 MA's), (44, 13344), (48, 13359), (49, 13362), (60, 13425), (62, 13434), (64, 13443), (68, 13479), (77, 13515), (93, 13620),

Gene: Evaa_15 Start: 14245, Stop: 14619, Start Num: 32

Candidate Starts for Evaa_15:

(Start: 32 @14245 has 7 MA's), (44, 14320), (Start: 47 @14332 has 2 MA's), (53, 14359), (66, 14431), (77, 14491), (79, 14497), (85, 14539), (86, 14548), (90, 14587),

Gene: Fanaw_15 Start: 15006, Stop: 15407, Start Num: 28

Candidate Starts for Fanaw_15:

(Start: 28 @15006 has 296 MA's), (49, 15108), (54, 15147), (60, 15171), (62, 15180), (68, 15225), (72, 15243), (77, 15261), (81, 15282), (82, 15291), (99, 15384),

Gene: Fang_15 Start: 13269, Stop: 13658, Start Num: 28

Candidate Starts for Fang_15:

(Start: 28 @13269 has 296 MA's), (44, 13347), (48, 13362), (49, 13365), (60, 13428), (62, 13437), (64, 13446), (68, 13482), (77, 13518), (93, 13623),

Gene: FluffyNinja_15 Start: 13257, Stop: 13646, Start Num: 28

Candidate Starts for FluffyNinja_15:

(Start: 28 @13257 has 296 MA's), (44, 13335), (48, 13350), (49, 13353), (60, 13416), (62, 13425), (64, 13434), (68, 13470), (77, 13506), (93, 13611),

Gene: Fortunato_15 Start: 14970, Stop: 15371, Start Num: 28

Candidate Starts for Fortunato_15:

(Start: 28 @14970 has 296 MA's), (Start: 47 @15066 has 2 MA's), (49, 15072), (54, 15111), (60, 15135), (62, 15144), (68, 15189), (69, 15195), (72, 15207), (75, 15216), (77, 15225), (81, 15246), (82, 15255), (99, 15348),

Gene: Fozzie_14 Start: 13263, Stop: 13652, Start Num: 28

Candidate Starts for Fozzie_14:

(Start: 28 @13263 has 296 MA's), (44, 13341), (48, 13356), (49, 13359), (60, 13422), (62, 13431), (64, 13440), (68, 13476), (77, 13512), (93, 13617),

Gene: Frankicide_15 Start: 13255, Stop: 13644, Start Num: 28

Candidate Starts for Frankicide_15:

(Start: 28 @13255 has 296 MA's), (44, 13333), (48, 13348), (49, 13351), (60, 13414), (62, 13423), (64, 13432), (68, 13468), (77, 13504), (93, 13609),

Gene: Frederick_15 Start: 14979, Stop: 15380, Start Num: 28

Candidate Starts for Frederick_15:

(Start: 28 @14979 has 296 MA's), (Start: 47 @15075 has 2 MA's), (49, 15081), (54, 15120), (60, 15144), (62, 15153), (68, 15198), (69, 15204), (72, 15216), (75, 15225), (77, 15234), (81, 15255), (82, 15264), (99, 15357),

Gene: Fresco_14 Start: 12949, Stop: 13329, Start Num: 35

Candidate Starts for Fresco_14:

(Start: 35 @12949 has 4 MA's), (Start: 47 @13024 has 2 MA's), (53, 13051), (65, 13120), (79, 13189), (81, 13204), (89, 13267), (91, 13282),

Gene: Freya_14 Start: 12949, Stop: 13338, Start Num: 28

Candidate Starts for Freya_14:

(Start: 28 @12949 has 296 MA's), (44, 13027), (48, 13042), (49, 13045), (60, 13108), (62, 13117), (64, 13126), (68, 13162), (77, 13198), (93, 13303),

Gene: FriarPreacher_15 Start: 13274, Stop: 13663, Start Num: 28

Candidate Starts for FriarPreacher_15:

(Start: 28 @13274 has 296 MA's), (44, 13352), (48, 13367), (49, 13370), (60, 13433), (62, 13442), (64, 13451), (68, 13487), (77, 13523), (93, 13628),

Gene: Fringe_15 Start: 13236, Stop: 13625, Start Num: 28

Candidate Starts for Fringe_15:

(Start: 28 @13236 has 296 MA's), (44, 13314), (48, 13329), (49, 13332), (60, 13395), (62, 13404), (64, 13413), (68, 13449), (77, 13485), (93, 13590),

Gene: FugateOSU_14 Start: 12960, Stop: 13349, Start Num: 28

Candidate Starts for FugateOSU_14:

(Start: 28 @12960 has 296 MA's), (44, 13038), (48, 13053), (49, 13056), (60, 13119), (62, 13128), (64, 13137), (68, 13173), (77, 13209), (93, 13314),

Gene: Gadget_18 Start: 14570, Stop: 15004, Start Num: 26

Candidate Starts for Gadget_18:

(16, 14465), (Start: 26 @14570 has 48 MA's), (39, 14624), (Start: 47 @14690 has 2 MA's), (83, 14891), (84, 14894),

Gene: Gareth_14 Start: 12957, Stop: 13346, Start Num: 28

Candidate Starts for Gareth_14:

(Start: 28 @12957 has 296 MA's), (44, 13035), (48, 13050), (49, 13053), (60, 13116), (62, 13125), (64, 13134), (68, 13170), (77, 13206), (93, 13311),

Gene: GeneCoco_15 Start: 13259, Stop: 13648, Start Num: 28

Candidate Starts for GeneCoco_15:

(Start: 28 @13259 has 296 MA's), (44, 13337), (48, 13352), (49, 13355), (60, 13418), (62, 13427), (64, 13436), (68, 13472), (77, 13508), (93, 13613),

Gene: Gervas_17 Start: 14549, Stop: 14983, Start Num: 26

Candidate Starts for Gervas_17:

(16, 14444), (Start: 26 @14549 has 48 MA's), (39, 14603), (Start: 47 @14669 has 2 MA's), (83, 14870), (84, 14873),

Gene: GinPorsche_14 Start: 13912, Stop: 14313, Start Num: 28

Candidate Starts for GinPorsche_14:

(Start: 28 @13912 has 296 MA's), (49, 14014), (60, 14077), (62, 14086), (64, 14095), (68, 14131), (72, 14149), (75, 14158), (77, 14167), (81, 14188), (82, 14197), (99, 14290),

Gene: Giraffe_15 Start: 12961, Stop: 13350, Start Num: 28

Candidate Starts for Giraffe_15:

(Start: 28 @12961 has 296 MA's), (44, 13039), (48, 13054), (49, 13057), (60, 13120), (62, 13129), (64, 13138), (68, 13174), (77, 13210), (93, 13315),

Gene: GlenHope_18 Start: 14556, Stop: 14990, Start Num: 26

Candidate Starts for GlenHope_18:

(16, 14451), (Start: 26 @14556 has 48 MA's), (39, 14610), (Start: 47 @14676 has 2 MA's), (83, 14877), (84, 14880),

Gene: Glubnar_17 Start: 14690, Stop: 15004, Start Num: 47

Candidate Starts for Glubnar_17:

(16, 14465), (Start: 26 @14570 has 48 MA's), (39, 14624), (Start: 47 @14690 has 2 MA's), (83, 14891), (84, 14894),

Gene: Gophee_15 Start: 13238, Stop: 13627, Start Num: 28

Candidate Starts for Gophee_15:

(Start: 28 @13238 has 296 MA's), (44, 13316), (48, 13331), (49, 13334), (60, 13397), (62, 13406), (64, 13415), (68, 13451), (77, 13487), (93, 13592),

Gene: Grand2040_14 Start: 12976, Stop: 13365, Start Num: 28

Candidate Starts for Grand2040_14:

(Start: 28 @12976 has 296 MA's), (44, 13054), (48, 13069), (49, 13072), (60, 13135), (62, 13144), (64, 13153), (68, 13189), (77, 13225), (93, 13330),

Gene: Gwennie1_15 Start: 13277, Stop: 13666, Start Num: 28

Candidate Starts for Gwennie1_15:

(Start: 28 @13277 has 296 MA's), (44, 13355), (48, 13370), (49, 13373), (60, 13436), (62, 13445), (64, 13454), (68, 13490), (77, 13526), (93, 13631),

Gene: Gwilliam_15 Start: 13250, Stop: 13639, Start Num: 28

Candidate Starts for Gwilliam_15:

(Start: 28 @13250 has 296 MA's), (44, 13328), (48, 13343), (49, 13346), (60, 13409), (62, 13418), (64, 13427), (68, 13463), (77, 13499), (93, 13604),

Gene: Gyarad_0015 Start: 13253, Stop: 13642, Start Num: 28

Candidate Starts for Gyarad_0015:

(Start: 28 @13253 has 296 MA's), (44, 13331), (48, 13346), (49, 13349), (60, 13412), (62, 13421), (64, 13430), (68, 13466), (77, 13502), (93, 13607),

Gene: HSavage_15 Start: 13261, Stop: 13650, Start Num: 28

Candidate Starts for HSavage_15:

(Start: 28 @13261 has 296 MA's), (44, 13339), (48, 13354), (49, 13357), (60, 13420), (62, 13429), (64, 13438), (68, 13474), (77, 13510), (93, 13615),

Gene: Haimas_15 Start: 13253, Stop: 13642, Start Num: 28

Candidate Starts for Haimas_15:

(Start: 28 @13253 has 296 MA's), (44, 13331), (48, 13346), (49, 13349), (60, 13412), (62, 13421), (64, 13430), (68, 13466), (77, 13502), (93, 13607),

Gene: Haleema_14 Start: 12978, Stop: 13367, Start Num: 28

Candidate Starts for Haleema_14:

(Start: 28 @12978 has 296 MA's), (44, 13056), (48, 13071), (49, 13074), (60, 13137), (62, 13146), (64, 13155), (68, 13191), (77, 13227), (93, 13332),

Gene: Halfpint_16 Start: 14391, Stop: 14825, Start Num: 26

Candidate Starts for Halfpint_16:

(16, 14286), (Start: 26 @14391 has 48 MA's), (39, 14445), (Start: 47 @14511 has 2 MA's), (83, 14712), (84, 14715),

Gene: Hally898_14 Start: 13912, Stop: 14313, Start Num: 28

Candidate Starts for Hally898_14:

(Start: 28 @13912 has 296 MA's), (49, 14014), (60, 14077), (61, 14083), (62, 14086), (64, 14095), (68, 14131), (72, 14149), (75, 14158), (77, 14167), (81, 14188), (82, 14197), (99, 14290),

Gene: Hamish_15 Start: 13247, Stop: 13636, Start Num: 28

Candidate Starts for Hamish_15:

(Start: 28 @13247 has 296 MA's), (44, 13325), (48, 13340), (49, 13343), (60, 13406), (62, 13415), (64, 13424), (68, 13460), (77, 13496), (93, 13601),

Gene: Hangman_15 Start: 14979, Stop: 15380, Start Num: 28

Candidate Starts for Hangman_15:

(Start: 28 @14979 has 296 MA's), (49, 15081), (54, 15120), (60, 15144), (62, 15153), (68, 15198), (72, 15216), (77, 15234), (81, 15255), (82, 15264), (99, 15357),

Gene: Hartsy_15 Start: 13250, Stop: 13639, Start Num: 28

Candidate Starts for Hartsy_15:

(Start: 28 @13250 has 296 MA's), (44, 13328), (48, 13343), (49, 13346), (60, 13409), (62, 13418), (64, 13427), (68, 13463), (77, 13499), (93, 13604),

Gene: Harvey_15 Start: 13275, Stop: 13664, Start Num: 28

Candidate Starts for Harvey_15:

(Start: 28 @13275 has 296 MA's), (44, 13353), (48, 13368), (49, 13371), (60, 13434), (62, 13443), (64, 13452), (68, 13488), (77, 13524), (93, 13629),

Gene: HarveySr_17 Start: 14663, Stop: 14977, Start Num: 47

Candidate Starts for HarveySr_17:

(16, 14438), (Start: 26 @14543 has 48 MA's), (39, 14597), (Start: 47 @14663 has 2 MA's), (83, 14864), (84, 14867),

Gene: Heath_15 Start: 14976, Stop: 15377, Start Num: 28

Candidate Starts for Heath_15:

(Start: 28 @14976 has 296 MA's), (49, 15078), (54, 15117), (60, 15141), (62, 15150), (68, 15195), (69, 15201), (77, 15231), (81, 15252), (82, 15261), (99, 15354),

Gene: Heathcliff_17 Start: 14528, Stop: 14962, Start Num: 26

Candidate Starts for Heathcliff_17:

(16, 14423), (Start: 26 @14528 has 48 MA's), (39, 14582), (Start: 47 @14648 has 2 MA's), (83, 14849), (84, 14852),

Gene: Held_15 Start: 12961, Stop: 13350, Start Num: 28

Candidate Starts for Held_15:

(Start: 28 @12961 has 296 MA's), (44, 13039), (48, 13054), (49, 13057), (60, 13120), (62, 13129), (64, 13138), (68, 13174), (77, 13210), (93, 13315),

Gene: HenryJackson_14 Start: 12975, Stop: 13364, Start Num: 28

Candidate Starts for HenryJackson_14:

(Start: 28 @12975 has 296 MA's), (44, 13053), (48, 13068), (49, 13071), (60, 13134), (62, 13143), (64, 13152), (68, 13188), (77, 13224), (93, 13329),

Gene: Hertubise_15 Start: 13268, Stop: 13657, Start Num: 28

Candidate Starts for Hertubise_15:

(Start: 28 @13268 has 296 MA's), (44, 13346), (48, 13361), (49, 13364), (60, 13427), (62, 13436), (64, 13445), (68, 13481), (77, 13517), (93, 13622),

Gene: Hetaeria_15 Start: 13271, Stop: 13660, Start Num: 28

Candidate Starts for Hetaeria_15:

(Start: 28 @13271 has 296 MA's), (44, 13349), (48, 13364), (49, 13367), (60, 13430), (62, 13439), (64, 13448), (68, 13484), (77, 13520), (93, 13625),

Gene: HighStump_14 Start: 12960, Stop: 13349, Start Num: 28

Candidate Starts for HighStump_14:

(Start: 28 @12960 has 296 MA's), (44, 13038), (48, 13053), (49, 13056), (60, 13119), (62, 13128), (64, 13137), (68, 13173), (77, 13209), (93, 13314),

Gene: Hocus_14 Start: 12960, Stop: 13349, Start Num: 28

Candidate Starts for Hocus_14:

(Start: 28 @12960 has 296 MA's), (44, 13038), (48, 13053), (49, 13056), (60, 13119), (62, 13128), (64, 13137), (68, 13173), (77, 13209), (93, 13314),

Gene: Horchata_15 Start: 13240, Stop: 13629, Start Num: 28

Candidate Starts for Horchata_15:

(Start: 28 @13240 has 296 MA's), (44, 13318), (48, 13333), (49, 13336), (60, 13399), (62, 13408), (64, 13417), (68, 13453), (77, 13489), (93, 13594),

Gene: Hydro_15 Start: 14976, Stop: 15377, Start Num: 28

Candidate Starts for Hydro_15:

(Start: 28 @14976 has 296 MA's), (49, 15078), (54, 15117), (60, 15141), (62, 15150), (68, 15195), (72, 15213), (77, 15231), (81, 15252), (82, 15261), (99, 15354),

Gene: ImtiyazSitla_14 Start: 12800, Stop: 13189, Start Num: 28

Candidate Starts for ImtiyazSitla_14:

(Start: 28 @12800 has 296 MA's), (44, 12878), (48, 12893), (49, 12896), (60, 12959), (62, 12968), (64, 12977), (68, 13013), (77, 13049), (93, 13154),

Gene: Inchworm_15 Start: 13244, Stop: 13633, Start Num: 28

Candidate Starts for Inchworm_15:

(Start: 28 @13244 has 296 MA's), (44, 13322), (48, 13337), (49, 13340), (60, 13403), (62, 13412), (64, 13421), (68, 13457), (77, 13493), (93, 13598),

Gene: Inverness_15 Start: 13261, Stop: 13650, Start Num: 28

Candidate Starts for Inverness_15:

(Start: 28 @13261 has 296 MA's), (44, 13339), (48, 13354), (49, 13357), (60, 13420), (62, 13429), (64, 13438), (68, 13474), (77, 13510), (93, 13615),

Gene: Iridessa_14 Start: 12929, Stop: 13318, Start Num: 28

Candidate Starts for Iridessa_14:

(Start: 28 @12929 has 296 MA's), (44, 13007), (48, 13022), (49, 13025), (60, 13088), (62, 13097), (64, 13106), (68, 13142), (77, 13178), (93, 13283),

Gene: Iridoclysis_15 Start: 13233, Stop: 13622, Start Num: 28

Candidate Starts for Iridoclysis_15:

(Start: 28 @13233 has 296 MA's), (44, 13311), (48, 13326), (49, 13329), (60, 13392), (62, 13401), (64, 13410), (68, 13446), (77, 13482), (93, 13587),

Gene: IsaacEli_15 Start: 13265, Stop: 13654, Start Num: 28

Candidate Starts for IsaacEli_15:

(Start: 28 @13265 has 296 MA's), (44, 13343), (48, 13358), (49, 13361), (60, 13424), (62, 13433), (64, 13442), (68, 13478), (77, 13514), (93, 13619),

Gene: JAMaL_15 Start: 15160, Stop: 15561, Start Num: 28

Candidate Starts for JAMaL_15:

(Start: 28 @15160 has 296 MA's), (49, 15262), (60, 15325), (68, 15379), (72, 15397), (75, 15406), (77, 15415), (80, 15433), (82, 15445),

Gene: JDog_14 Start: 12968, Stop: 13357, Start Num: 28

Candidate Starts for JDog_14:

(Start: 28 @12968 has 296 MA's), (44, 13046), (48, 13061), (49, 13064), (60, 13127), (62, 13136), (64, 13145), (68, 13181), (77, 13217), (93, 13322),

Gene: JacAttac_15 Start: 13244, Stop: 13633, Start Num: 28

Candidate Starts for JacAttac_15:

(Start: 28 @13244 has 296 MA's), (44, 13322), (48, 13337), (49, 13340), (60, 13403), (62, 13412), (64, 13421), (68, 13457), (77, 13493), (93, 13598),

Gene: Jackstina_16 Start: 14492, Stop: 14926, Start Num: 26

Candidate Starts for Jackstina_16:

(16, 14387), (Start: 26 @14492 has 48 MA's), (39, 14546), (Start: 47 @14612 has 2 MA's), (83, 14813), (84, 14816),

Gene: JaguarMi_16 Start: 14806, Stop: 15207, Start Num: 28

Candidate Starts for JaguarMi_16:

(Start: 28 @14806 has 296 MA's), (49, 14908), (54, 14947), (60, 14971), (62, 14980), (68, 15025), (72, 15043), (75, 15052), (77, 15061), (81, 15082), (82, 15091), (99, 15184),

Gene: JakeO_14 Start: 12968, Stop: 13357, Start Num: 28

Candidate Starts for JakeO_14:

(Start: 28 @12968 has 296 MA's), (44, 13046), (48, 13061), (49, 13064), (60, 13127), (62, 13136), (64, 13145), (68, 13181), (77, 13217), (93, 13322),

Gene: JangoPhett_15 Start: 13245, Stop: 13634, Start Num: 28

Candidate Starts for JangoPhett_15:

(Start: 28 @13245 has 296 MA's), (44, 13323), (48, 13338), (49, 13341), (60, 13404), (62, 13413), (64, 13422), (68, 13458), (77, 13494), (93, 13599),

Gene: Jesabah_15 Start: 12973, Stop: 13362, Start Num: 28

Candidate Starts for Jesabah_15:

(Start: 28 @12973 has 296 MA's), (44, 13051), (48, 13066), (49, 13069), (60, 13132), (62, 13141), (64, 13150), (68, 13186), (77, 13222), (93, 13327),

Gene: Jillium_14 Start: 12966, Stop: 13355, Start Num: 28

Candidate Starts for Jillium_14:

(Start: 28 @12966 has 296 MA's), (44, 13044), (48, 13059), (49, 13062), (60, 13125), (62, 13134), (64, 13143), (68, 13179), (77, 13215), (93, 13320),

Gene: Jiminy_14 Start: 12808, Stop: 13197, Start Num: 28

Candidate Starts for Jiminy_14:

(Start: 28 @12808 has 296 MA's), (44, 12886), (48, 12901), (49, 12904), (60, 12967), (62, 12976), (64, 12985), (68, 13021), (77, 13057), (93, 13162),

Gene: Jiraiya_15 Start: 12968, Stop: 13357, Start Num: 28

Candidate Starts for Jiraiya_15:

(Start: 28 @12968 has 296 MA's), (44, 13046), (48, 13061), (49, 13064), (60, 13127), (62, 13136), (64, 13145), (68, 13181), (77, 13217), (93, 13322),

Gene: JonJames_51 Start: 37099, Stop: 37509, Start Num: 27

Candidate Starts for JonJames_51:

(Start: 27 @37099 has 2 MA's), (46, 37210), (53, 37243), (55, 37267), (86, 37432),

Gene: Juicebox_24 Start: 22590, Stop: 22964, Start Num: 40

Candidate Starts for Juicebox_24:

(Start: 40 @22590 has 9 MA's), (51, 22671), (52, 22674), (58, 22722), (63, 22743), (67, 22776), (79, 22824), (97, 22938),

Gene: KLucky39_15 Start: 13253, Stop: 13642, Start Num: 28

Candidate Starts for KLucky39_15:

(Start: 28 @13253 has 296 MA's), (44, 13331), (48, 13346), (49, 13349), (60, 13412), (62, 13421), (64, 13430), (68, 13466), (77, 13502), (93, 13607),

Gene: Kahve_14 Start: 12975, Stop: 13364, Start Num: 28

Candidate Starts for Kahve_14:

(Start: 28 @12975 has 296 MA's), (44, 13053), (48, 13068), (49, 13071), (60, 13134), (62, 13143), (64, 13152), (68, 13188), (77, 13224), (93, 13329),

Gene: Kailash_15 Start: 13262, Stop: 13651, Start Num: 28

Candidate Starts for Kailash_15:

(Start: 28 @13262 has 296 MA's), (44, 13340), (48, 13355), (49, 13358), (60, 13421), (62, 13430), (64, 13439), (68, 13475), (77, 13511), (93, 13616),

Gene: Kamiyu_17 Start: 14537, Stop: 14971, Start Num: 26

Candidate Starts for Kamiyu_17:

(16, 14432), (Start: 26 @14537 has 48 MA's), (39, 14591), (Start: 47 @14657 has 2 MA's), (83, 14858), (84, 14861),

Gene: KarasumaRum_17 Start: 15081, Stop: 15383, Start Num: 48

Candidate Starts for KarasumaRum_17:

(13, 14862), (Start: 26 @14970 has 48 MA's), (Start: 28 @14985 has 296 MA's), (48, 15081), (49, 15084), (62, 15156), (68, 15201), (77, 15237), (79, 15243), (83, 15279), (100, 15363),

Gene: Katniss_15 Start: 13272, Stop: 13661, Start Num: 28

Candidate Starts for Katniss_15:

(Start: 28 @13272 has 296 MA's), (44, 13350), (48, 13365), (49, 13368), (60, 13431), (62, 13440), (64, 13449), (68, 13485), (77, 13521), (93, 13626),

Gene: Keitherie_15 Start: 13273, Stop: 13662, Start Num: 28

Candidate Starts for Keitherie_15:

(Start: 28 @13273 has 296 MA's), (44, 13351), (48, 13366), (49, 13369), (60, 13432), (62, 13441), (64, 13450), (68, 13486), (77, 13522), (93, 13627),

Gene: Khan1_15 Start: 12968, Stop: 13357, Start Num: 28

Candidate Starts for Khan1_15:

(Start: 28 @12968 has 296 MA's), (44, 13046), (48, 13061), (49, 13064), (60, 13127), (62, 13136), (64, 13145), (68, 13181), (77, 13217), (93, 13322),

Gene: Kikipoo_15 Start: 13265, Stop: 13654, Start Num: 28

Candidate Starts for Kikipoo_15:

(Start: 28 @13265 has 296 MA's), (44, 13343), (48, 13358), (49, 13361), (60, 13424), (62, 13433), (64, 13442), (68, 13478), (77, 13514), (93, 13619),

Gene: Kimbrough_15 Start: 12963, Stop: 13352, Start Num: 28

Candidate Starts for Kimbrough_15:

(Start: 28 @12963 has 296 MA's), (44, 13041), (48, 13056), (49, 13059), (60, 13122), (62, 13131), (64, 13140), (68, 13176), (77, 13212), (93, 13317),

Gene: KingTut_14 Start: 12955, Stop: 13344, Start Num: 28

Candidate Starts for KingTut_14:

(Start: 28 @12955 has 296 MA's), (44, 13033), (48, 13048), (49, 13051), (60, 13114), (62, 13123), (64, 13132), (68, 13168), (77, 13204), (93, 13309),

Gene: KingVeVeVe_15 Start: 13242, Stop: 13631, Start Num: 28

Candidate Starts for KingVeVeVe_15:

(Start: 28 @13242 has 296 MA's), (44, 13320), (48, 13335), (49, 13338), (60, 13401), (62, 13410), (64, 13419), (68, 13455), (77, 13491), (93, 13596),

Gene: KlimbOn_15 Start: 13253, Stop: 13642, Start Num: 28

Candidate Starts for KlimbOn_15:

(Start: 28 @13253 has 296 MA's), (44, 13331), (48, 13346), (49, 13349), (60, 13412), (62, 13421), (64, 13430), (68, 13466), (77, 13502), (93, 13607),

Gene: Kloppinator_15 Start: 13269, Stop: 13658, Start Num: 28

Candidate Starts for Kloppinator_15:

(Start: 28 @13269 has 296 MA's), (44, 13347), (48, 13362), (49, 13365), (60, 13428), (62, 13437), (64, 13446), (68, 13482), (77, 13518), (93, 13623),

Gene: Kronus_16 Start: 15149, Stop: 15583, Start Num: 26

Candidate Starts for Kronus_16:

(16, 15044), (Start: 26 @15149 has 48 MA's), (39, 15203), (Start: 47 @15269 has 2 MA's), (83, 15470), (84, 15473),

Gene: Kwadwo_14 Start: 12954, Stop: 13343, Start Num: 28

Candidate Starts for Kwadwo_14:

(Start: 28 @12954 has 296 MA's), (44, 13032), (48, 13047), (49, 13050), (60, 13113), (62, 13122), (64, 13131), (68, 13167), (77, 13203), (93, 13308),

Gene: Kwksand96_14 Start: 12818, Stop: 13207, Start Num: 28

Candidate Starts for Kwksand96_14:

(Start: 28 @12818 has 296 MA's), (44, 12896), (48, 12911), (49, 12914), (60, 12977), (62, 12986), (64, 12995), (68, 13031), (77, 13067), (93, 13172),

Gene: Labeouficaum_14 Start: 12812, Stop: 13201, Start Num: 28

Candidate Starts for Labeouficaum_14:

(Start: 28 @12812 has 296 MA's), (44, 12890), (48, 12905), (49, 12908), (60, 12971), (62, 12980), (64, 12989), (68, 13025), (77, 13061), (93, 13166),

Gene: Lambano_14 Start: 13912, Stop: 14313, Start Num: 28

Candidate Starts for Lambano_14:

(Start: 28 @13912 has 296 MA's), (49, 14014), (60, 14077), (62, 14086), (64, 14095), (68, 14131), (72, 14149), (75, 14158), (77, 14167), (81, 14188), (82, 14197), (99, 14290),

Gene: LasagnaCat_15 Start: 13256, Stop: 13645, Start Num: 28

Candidate Starts for LasagnaCat_15:

(Start: 28 @13256 has 296 MA's), (44, 13334), (48, 13349), (49, 13352), (60, 13415), (62, 13424), (64, 13433), (68, 13469), (77, 13505), (93, 13610),

Gene: Lasso_15 Start: 13232, Stop: 13621, Start Num: 28

Candidate Starts for Lasso_15:

(Start: 28 @13232 has 296 MA's), (44, 13310), (48, 13325), (49, 13328), (60, 13391), (62, 13400), (64, 13409), (68, 13445), (77, 13481), (93, 13586),

Gene: Lederberg_22 Start: 21495, Stop: 21860, Start Num: 40

Candidate Starts for Lederberg_22:

(7, 21255), (15, 21339), (24, 21426), (Start: 40 @21495 has 9 MA's), (52, 21579), (56, 21618), (57, 21621), (68, 21687),

Gene: LeeLot_15 Start: 13253, Stop: 13642, Start Num: 28

Candidate Starts for LeeLot_15:

(Start: 28 @13253 has 296 MA's), (44, 13331), (48, 13346), (49, 13349), (60, 13412), (62, 13421), (64, 13430), (68, 13466), (77, 13502), (93, 13607),

Gene: Lego3393_15 Start: 13269, Stop: 13658, Start Num: 28

Candidate Starts for Lego3393_15:

(Start: 28 @13269 has 296 MA's), (44, 13347), (48, 13362), (49, 13365), (60, 13428), (62, 13437), (64, 13446), (68, 13482), (77, 13518), (93, 13623),

Gene: Legolas_14 Start: 12970, Stop: 13359, Start Num: 28

Candidate Starts for Legolas_14:

(Start: 28 @12970 has 296 MA's), (44, 13048), (48, 13063), (49, 13066), (60, 13129), (62, 13138), (64, 13147), (68, 13183), (77, 13219), (93, 13324),

Gene: LeiMonet_15 Start: 12962, Stop: 13351, Start Num: 28

Candidate Starts for LeiMonet_15:

(Start: 28 @12962 has 296 MA's), (44, 13040), (48, 13055), (49, 13058), (60, 13121), (62, 13130), (64, 13139), (68, 13175), (77, 13211), (93, 13316),

Gene: LemonSlice_15 Start: 12964, Stop: 13353, Start Num: 28

Candidate Starts for LemonSlice_15:

(Start: 28 @12964 has 296 MA's), (44, 13042), (48, 13057), (49, 13060), (60, 13123), (62, 13132), (64, 13141), (68, 13177), (77, 13213), (93, 13318),

Gene: LestyG_17 Start: 14570, Stop: 15004, Start Num: 26

Candidate Starts for LestyG_17:

(16, 14465), (Start: 26 @14570 has 48 MA's), (39, 14624), (Start: 47 @14690 has 2 MA's), (83, 14891), (84, 14894),

Gene: Ligma_14 Start: 12949, Stop: 13329, Start Num: 35

Candidate Starts for Ligma_14:

(Start: 35 @12949 has 4 MA's), (Start: 47 @13024 has 2 MA's), (53, 13051), (65, 13120), (79, 13189), (81, 13204), (89, 13267), (91, 13282),

Gene: LittleMunchkin_15 Start: 14381, Stop: 14770, Start Num: 32

Candidate Starts for LittleMunchkin_15:

(Start: 32 @14381 has 7 MA's), (Start: 35 @14393 has 4 MA's), (43, 14423), (53, 14495), (65, 14564), (77, 14627), (79, 14633), (89, 14711), (91, 14726),

Gene: Lolalove_15 Start: 14976, Stop: 15377, Start Num: 28

Candidate Starts for Lolalove_15:

(Start: 28 @14976 has 296 MA's), (49, 15078), (54, 15117), (60, 15141), (62, 15150), (68, 15195), (72, 15213), (75, 15222), (77, 15231), (81, 15252), (82, 15261), (99, 15354),

Gene: Longacauda_14 Start: 12956, Stop: 13345, Start Num: 28

Candidate Starts for Longacauda_14:

(Start: 28 @12956 has 296 MA's), (44, 13034), (48, 13049), (49, 13052), (60, 13115), (62, 13124), (64, 13133), (68, 13169), (77, 13205), (93, 13310),

Gene: Lopsy_14 Start: 12812, Stop: 13201, Start Num: 28

Candidate Starts for Lopsy_14:

(Start: 28 @12812 has 296 MA's), (44, 12890), (48, 12905), (49, 12908), (60, 12971), (62, 12980), (64, 12989), (68, 13025), (77, 13061), (93, 13166),

Gene: LostAndPhound_14 Start: 12966, Stop: 13355, Start Num: 28

Candidate Starts for LostAndPhound_14:

(Start: 28 @12966 has 296 MA's), (44, 13044), (48, 13059), (49, 13062), (60, 13125), (62, 13134), (64, 13143), (68, 13179), (77, 13215), (93, 13320),

Gene: LuckyMarjie_14 Start: 12978, Stop: 13367, Start Num: 28

Candidate Starts for LuckyMarjie_14:

(Start: 28 @12978 has 296 MA's), (44, 13056), (48, 13071), (49, 13074), (60, 13137), (62, 13146), (64, 13155), (68, 13191), (77, 13227), (93, 13332),

Gene: Lulumae_14 Start: 12955, Stop: 13344, Start Num: 28

Candidate Starts for Lulumae_14:

(Start: 28 @12955 has 296 MA's), (44, 13033), (48, 13048), (49, 13051), (60, 13114), (62, 13123), (64, 13132), (68, 13168), (77, 13204), (93, 13309),

Gene: Lulwa_15 Start: 13244, Stop: 13633, Start Num: 28

Candidate Starts for Lulwa_15:

(Start: 28 @13244 has 296 MA's), (44, 13322), (48, 13337), (49, 13340), (60, 13403), (62, 13412), (64, 13421), (68, 13457), (77, 13493), (93, 13598),

Gene: Lumine_14 Start: 12948, Stop: 13337, Start Num: 28

Candidate Starts for Lumine_14:

(Start: 28 @12948 has 296 MA's), (44, 13026), (48, 13041), (49, 13044), (60, 13107), (62, 13116), (64, 13125), (68, 13161), (77, 13197), (93, 13302),

Gene: MRabcd_14 Start: 12957, Stop: 13346, Start Num: 28

Candidate Starts for MRabcd_14:

(Start: 28 @12957 has 296 MA's), (44, 13035), (48, 13050), (49, 13053), (60, 13116), (62, 13125), (64, 13134), (68, 13170), (77, 13206), (93, 13311),

Gene: Mag7_14 Start: 12812, Stop: 13201, Start Num: 28

Candidate Starts for Mag7_14:

(Start: 28 @12812 has 296 MA's), (44, 12890), (48, 12905), (49, 12908), (60, 12971), (62, 12980), (64, 12989), (68, 13025), (77, 13061), (93, 13166),

Gene: Magic8_15 Start: 13250, Stop: 13639, Start Num: 28

Candidate Starts for Magic8_15:

(Start: 28 @13250 has 296 MA's), (44, 13328), (48, 13343), (49, 13346), (60, 13409), (62, 13418), (64, 13427), (68, 13463), (77, 13499), (93, 13604),

Gene: Magpie_15 Start: 15161, Stop: 15562, Start Num: 28

Candidate Starts for Magpie_15:

(Start: 28 @15161 has 296 MA's), (49, 15263), (54, 15302), (60, 15326), (62, 15335), (72, 15398), (77, 15416), (81, 15437), (82, 15446), (99, 15539),

Gene: MakoManhole_16 Start: 14381, Stop: 14782, Start Num: 25

Candidate Starts for MakoManhole_16:

(Start: 25 @14381 has 6 MA's), (Start: 28 @14402 has 296 MA's), (38, 14429), (51, 14507), (68, 14618), (75, 14645), (77, 14654), (79, 14660), (86, 14711), (88, 14729), (91, 14753), (96, 14771), (97, 14774),

Gene: Mana_14 Start: 12960, Stop: 13349, Start Num: 28

Candidate Starts for Mana_14:

(Start: 28 @12960 has 296 MA's), (44, 13038), (48, 13053), (49, 13056), (60, 13119), (62, 13128), (64, 13137), (68, 13173), (77, 13209), (93, 13314),

Gene: Manad_14 Start: 12810, Stop: 13199, Start Num: 28

Candidate Starts for Manad_14:

(Start: 28 @12810 has 296 MA's), (44, 12888), (48, 12903), (49, 12906), (60, 12969), (62, 12978), (64, 12987), (68, 13023), (77, 13059), (93, 13164),

Gene: Mao1_12 Start: 11984, Stop: 12379, Start Num: 26

Candidate Starts for Mao1_12:

(Start: 26 @11984 has 48 MA's), (34, 12017), (45, 12095), (64, 12191), (71, 12242), (73, 12248), (75, 12254), (77, 12263), (83, 12305),

Gene: Mariokart_14 Start: 12852, Stop: 13238, Start Num: 32

Candidate Starts for Mariokart_14:

(Start: 32 @12852 has 7 MA's), (Start: 35 @12864 has 4 MA's), (45, 12930), (53, 12966), (64, 13026), (65, 13035), (79, 13104), (81, 13119), (95, 13209),

Gene: Marley1013_17 Start: 15350, Stop: 15784, Start Num: 26

Candidate Starts for Marley1013_17:

(16, 15245), (Start: 26 @15350 has 48 MA's), (39, 15404), (Start: 47 @15470 has 2 MA's), (83, 15671), (84, 15674),

Gene: Maru_14 Start: 12958, Stop: 13347, Start Num: 28

Candidate Starts for Maru_14:

(Start: 28 @12958 has 296 MA's), (44, 13036), (48, 13051), (49, 13054), (60, 13117), (62, 13126), (64, 13135), (68, 13171), (77, 13207), (93, 13312),

Gene: Mask_13 Start: 11985, Stop: 12380, Start Num: 26

Candidate Starts for Mask_13:

(Start: 26 @11985 has 48 MA's), (34, 12018), (45, 12096), (64, 12192), (71, 12243), (73, 12249), (75, 12255), (77, 12264), (83, 12306),

Gene: Maskar_14 Start: 12800, Stop: 13189, Start Num: 28

Candidate Starts for Maskar_14:

(Start: 28 @12800 has 296 MA's), (44, 12878), (48, 12893), (49, 12896), (60, 12959), (62, 12968), (64, 12977), (68, 13013), (77, 13049), (93, 13154),

Gene: Matalotodo_15 Start: 13248, Stop: 13637, Start Num: 28

Candidate Starts for Matalotodo_15:

(Start: 28 @13248 has 296 MA's), (44, 13326), (48, 13341), (49, 13344), (60, 13407), (62, 13416), (64, 13425), (68, 13461), (77, 13497), (93, 13602),

Gene: Mcshane_14 Start: 12954, Stop: 13343, Start Num: 28

Candidate Starts for Mcshane_14:

(Start: 28 @12954 has 296 MA's), (44, 13032), (48, 13047), (49, 13050), (60, 13113), (62, 13122), (64, 13131), (68, 13167), (77, 13203), (93, 13308),

Gene: Mecca_14 Start: 12951, Stop: 13340, Start Num: 28

Candidate Starts for Mecca_14:

(Start: 28 @12951 has 296 MA's), (44, 13029), (48, 13044), (49, 13047), (60, 13110), (62, 13119), (64, 13128), (68, 13164), (77, 13200), (93, 13305),

Gene: Megamind20_15 Start: 12973, Stop: 13362, Start Num: 28

Candidate Starts for Megamind20_15:

(Start: 28 @12973 has 296 MA's), (44, 13051), (48, 13066), (49, 13069), (60, 13132), (62, 13141), (64, 13150), (68, 13186), (77, 13222), (93, 13327),

Gene: Megatron_15 Start: 13253, Stop: 13642, Start Num: 28

Candidate Starts for Megatron_15:

(Start: 28 @13253 has 296 MA's), (44, 13331), (48, 13346), (49, 13349), (60, 13412), (62, 13421), (64, 13430), (68, 13466), (77, 13502), (93, 13607),

Gene: Melc17_15 Start: 13244, Stop: 13633, Start Num: 28

Candidate Starts for Melc17_15:

(Start: 28 @13244 has 296 MA's), (44, 13322), (48, 13337), (49, 13340), (60, 13403), (62, 13412), (64, 13421), (68, 13457), (77, 13493), (93, 13598),

Gene: MelsMeow_14 Start: 12812, Stop: 13201, Start Num: 28

Candidate Starts for MelsMeow_14:

(Start: 28 @12812 has 296 MA's), (44, 12890), (48, 12905), (49, 12908), (60, 12971), (62, 12980), (64, 12989), (68, 13025), (77, 13061), (93, 13166),

Gene: Mesh1_15 Start: 13262, Stop: 13651, Start Num: 28

Candidate Starts for Mesh1_15:

(Start: 28 @13262 has 296 MA's), (44, 13340), (48, 13355), (49, 13358), (60, 13421), (62, 13430), (64, 13439), (68, 13475), (77, 13511), (93, 13616),

Gene: Mesmerelda_15 Start: 12954, Stop: 13343, Start Num: 28

Candidate Starts for Mesmerelda_15:

(Start: 28 @12954 has 296 MA's), (44, 13032), (48, 13047), (49, 13050), (60, 13113), (62, 13122), (64, 13131), (68, 13167), (77, 13203), (93, 13308),

Gene: MichaelPhcott_14 Start: 12812, Stop: 13201, Start Num: 28

Candidate Starts for MichaelPhcott_14:

(Start: 28 @12812 has 296 MA's), (44, 12890), (48, 12905), (49, 12908), (60, 12971), (62, 12980), (64, 12989), (68, 13025), (77, 13061), (93, 13166),

Gene: Mikota_15 Start: 13239, Stop: 13628, Start Num: 28

Candidate Starts for Mikota_15:

(Start: 28 @13239 has 296 MA's), (44, 13317), (48, 13332), (49, 13335), (60, 13398), (62, 13407), (64, 13416), (68, 13452), (77, 13488), (93, 13593),

Gene: MiniBoss_15 Start: 13241, Stop: 13630, Start Num: 28

Candidate Starts for MiniBoss_15:

(Start: 28 @13241 has 296 MA's), (44, 13319), (48, 13334), (49, 13337), (60, 13400), (62, 13409), (64, 13418), (68, 13454), (77, 13490), (93, 13595),

Gene: MitKao_15 Start: 12960, Stop: 13349, Start Num: 28

Candidate Starts for MitKao_15:

(Start: 28 @12960 has 296 MA's), (44, 13038), (48, 13053), (49, 13056), (60, 13119), (62, 13128), (64, 13137), (68, 13173), (77, 13209), (93, 13314),

Gene: Mithril_15 Start: 14979, Stop: 15380, Start Num: 28

Candidate Starts for Mithril_15:

(Start: 28 @14979 has 296 MA's), (49, 15081), (54, 15120), (60, 15144), (62, 15153), (68, 15198), (72, 15216), (75, 15225), (77, 15234), (81, 15255), (82, 15264), (99, 15357),

Gene: MmasiCarm_17 Start: 14563, Stop: 14997, Start Num: 26

Candidate Starts for MmasiCarm_17:

(16, 14458), (Start: 26 @14563 has 48 MA's), (39, 14617), (Start: 47 @14683 has 2 MA's), (83, 14884), (84, 14887),

Gene: Morgushi_15 Start: 12964, Stop: 13353, Start Num: 28

Candidate Starts for Morgushi_15:

(Start: 28 @12964 has 296 MA's), (44, 13042), (48, 13057), (49, 13060), (60, 13123), (62, 13132), (64, 13141), (68, 13177), (77, 13213), (93, 13318),

Gene: Mortcellus_16 Start: 15204, Stop: 15638, Start Num: 26

Candidate Starts for Mortcellus_16:

(16, 15099), (Start: 26 @15204 has 48 MA's), (39, 15258), (Start: 47 @15324 has 2 MA's), (83, 15525), (84, 15528),

Gene: Morty_15 Start: 13262, Stop: 13651, Start Num: 28

Candidate Starts for Morty_15:

(Start: 28 @13262 has 296 MA's), (44, 13340), (48, 13355), (49, 13358), (60, 13421), (62, 13430), (64, 13439), (68, 13475), (77, 13511), (93, 13616),

Gene: Morty007_17 Start: 15350, Stop: 15784, Start Num: 26

Candidate Starts for Morty007_17:

(16, 15245), (Start: 26 @15350 has 48 MA's), (39, 15404), (Start: 47 @15470 has 2 MA's), (83, 15671), (84, 15674),

Gene: Mosaic_14 Start: 12967, Stop: 13356, Start Num: 28

Candidate Starts for Mosaic_14:

(Start: 28 @12967 has 296 MA's), (44, 13045), (48, 13060), (49, 13063), (60, 13126), (62, 13135), (64, 13144), (68, 13180), (77, 13216), (93, 13321),

Gene: MossRose_16 Start: 14360, Stop: 14761, Start Num: 25

Candidate Starts for MossRose_16:

(Start: 25 @14360 has 6 MA's), (Start: 28 @14381 has 296 MA's), (38, 14408), (51, 14486), (68, 14597), (75, 14624), (77, 14633), (79, 14639), (88, 14708), (91, 14732), (96, 14750), (97, 14753),

Gene: MrPhizzler_14 Start: 12965, Stop: 13354, Start Num: 28

Candidate Starts for MrPhizzler_14:

(Start: 28 @12965 has 296 MA's), (44, 13043), (48, 13058), (49, 13061), (60, 13124), (62, 13133), (64, 13142), (68, 13178), (77, 13214), (93, 13319),

Gene: Mudslide_15 Start: 15224, Stop: 15625, Start Num: 28

Candidate Starts for Mudslide_15:

(Start: 28 @15224 has 296 MA's), (Start: 47 @15320 has 2 MA's), (49, 15326), (54, 15365), (60, 15389), (62, 15398), (68, 15443), (69, 15449), (72, 15461), (75, 15470), (77, 15479), (81, 15500), (82, 15509), (99, 15602),

Gene: Mulan_14 Start: 12960, Stop: 13349, Start Num: 28

Candidate Starts for Mulan_14:

(Start: 28 @12960 has 296 MA's), (44, 13038), (48, 13053), (49, 13056), (60, 13119), (62, 13128), (64, 13137), (68, 13173), (77, 13209), (93, 13314),

Gene: Murdoc_15 Start: 13253, Stop: 13642, Start Num: 28

Candidate Starts for Murdoc_15:

(Start: 28 @13253 has 296 MA's), (44, 13331), (48, 13346), (49, 13349), (60, 13412), (62, 13421), (64, 13430), (68, 13466), (77, 13502), (93, 13607),

Gene: Mutante_14 Start: 12963, Stop: 13352, Start Num: 28

Candidate Starts for Mutante_14:

(Start: 28 @12963 has 296 MA's), (44, 13041), (48, 13056), (49, 13059), (60, 13122), (62, 13131), (64, 13140), (68, 13176), (77, 13212), (93, 13317),

Gene: Mysterious_16 Start: 15087, Stop: 15494, Start Num: 28

Candidate Starts for Mysterious_16:

(13, 14964), (Start: 26 @15072 has 48 MA's), (Start: 28 @15087 has 296 MA's), (48, 15192), (49, 15195), (55, 15240), (62, 15267), (68, 15312), (77, 15348), (83, 15390), (100, 15474),

Gene: NHagos_14 Start: 12851, Stop: 13228, Start Num: 29

Candidate Starts for NHagos_14:

(Start: 29 @12851 has 1 MA's), (43, 12896), (45, 12932), (Start: 47 @12941 has 2 MA's), (60, 13010), (62, 13019), (77, 13100), (79, 13106), (86, 13157), (88, 13175),

Gene: Nacho_0015 Start: 13253, Stop: 13642, Start Num: 28

Candidate Starts for Nacho_0015:

(Start: 28 @13253 has 296 MA's), (44, 13331), (48, 13346), (49, 13349), (60, 13412), (62, 13421), (64, 13430), (68, 13466), (77, 13502), (93, 13607),

Gene: Nanao_14 Start: 13912, Stop: 14313, Start Num: 28

Candidate Starts for Nanao_14:

(Start: 28 @13912 has 296 MA's), (49, 14014), (60, 14077), (62, 14086), (64, 14095), (68, 14131), (72, 14149), (75, 14158), (77, 14167), (81, 14188), (82, 14197), (99, 14290),

Gene: Nangang_16 Start: 14928, Stop: 15227, Start Num: 49

Candidate Starts for Nangang_16:

(13, 14706), (Start: 26 @14814 has 48 MA's), (Start: 28 @14829 has 296 MA's), (48, 14925), (49, 14928), (62, 15000), (68, 15045), (77, 15081), (83, 15123), (100, 15207),

Gene: Nathan_16 Start: 13263, Stop: 13652, Start Num: 28

Candidate Starts for Nathan_16:

(Start: 28 @13263 has 296 MA's), (44, 13341), (48, 13356), (49, 13359), (60, 13422), (62, 13431), (64, 13440), (68, 13476), (77, 13512), (93, 13617),

Gene: Nehemiah_15 Start: 15087, Stop: 15494, Start Num: 28

Candidate Starts for Nehemiah_15:

(13, 14964), (Start: 26 @15072 has 48 MA's), (Start: 28 @15087 has 296 MA's), (48, 15192), (49, 15195), (55, 15240), (62, 15267), (68, 15312), (77, 15348), (83, 15390), (100, 15474),

Gene: Neos5_17 Start: 15356, Stop: 15790, Start Num: 26

Candidate Starts for Neos5_17:

(16, 15251), (Start: 26 @15356 has 48 MA's), (39, 15410), (Start: 47 @15476 has 2 MA's), (83, 15677), (84, 15680),

Gene: Newman_15 Start: 13253, Stop: 13642, Start Num: 28

Candidate Starts for Newman_15:

(Start: 28 @13253 has 296 MA's), (44, 13331), (48, 13346), (49, 13349), (60, 13412), (62, 13421), (64, 13430), (68, 13466), (77, 13502), (93, 13607),

Gene: Nicole21_15 Start: 13245, Stop: 13634, Start Num: 28

Candidate Starts for Nicole21_15:

(Start: 28 @13245 has 296 MA's), (44, 13323), (48, 13338), (49, 13341), (60, 13404), (62, 13413), (64, 13422), (68, 13458), (77, 13494), (93, 13599),

Gene: Nigel_13 Start: 13828, Stop: 14229, Start Num: 28

Candidate Starts for Nigel_13:

(Start: 28 @13828 has 296 MA's), (49, 13930), (60, 13993), (68, 14047), (72, 14065), (75, 14074), (77, 14083), (80, 14101), (82, 14113),

Gene: Nozo_17 Start: 15331, Stop: 15762, Start Num: 26

Candidate Starts for Nozo_17:

(16, 15226), (Start: 26 @15331 has 48 MA's), (39, 15385), (Start: 47 @15451 has 2 MA's), (83, 15652), (84, 15655),

Gene: Numberten_15 Start: 13256, Stop: 13645, Start Num: 28

Candidate Starts for Numberten_15:

(Start: 28 @13256 has 296 MA's), (44, 13334), (48, 13349), (49, 13352), (60, 13415), (62, 13424), (64, 13433), (68, 13469), (77, 13505), (93, 13610),

Gene: Nyala_14 Start: 12955, Stop: 13344, Start Num: 28

Candidate Starts for Nyala_14:

(Start: 28 @12955 has 296 MA's), (44, 13033), (48, 13048), (49, 13051), (60, 13114), (62, 13123), (64, 13132), (68, 13168), (77, 13204), (93, 13309),

Gene: OSmaximus_15 Start: 13263, Stop: 13652, Start Num: 28

Candidate Starts for OSmaximus_15:

(Start: 28 @13263 has 296 MA's), (44, 13341), (48, 13356), (49, 13359), (60, 13422), (62, 13431), (64, 13440), (68, 13476), (77, 13512), (93, 13617),

Gene: Obutu_17 Start: 14561, Stop: 14995, Start Num: 26

Candidate Starts for Obutu_17:

(16, 14456), (Start: 26 @14561 has 48 MA's), (39, 14615), (Start: 47 @14681 has 2 MA's), (83, 14882), (84, 14885),

Gene: Olak_14 Start: 12952, Stop: 13341, Start Num: 28

Candidate Starts for Olak_14:

(Start: 28 @12952 has 296 MA's), (44, 13030), (48, 13045), (49, 13048), (60, 13111), (62, 13120), (64, 13129), (68, 13165), (77, 13201), (93, 13306),

Gene: Oline_14 Start: 12812, Stop: 13201, Start Num: 28

Candidate Starts for Oline_14:

(Start: 28 @12812 has 296 MA's), (44, 12890), (48, 12905), (49, 12908), (60, 12971), (62, 12980), (64, 12989), (68, 13025), (77, 13061), (93, 13166),

Gene: Olive_15 Start: 13244, Stop: 13633, Start Num: 28

Candidate Starts for Olive_15:

(Start: 28 @13244 has 296 MA's), (44, 13322), (48, 13337), (49, 13340), (60, 13403), (62, 13412), (64, 13421), (68, 13457), (77, 13493), (93, 13598),

Gene: OliverWalter_15 Start: 13261, Stop: 13650, Start Num: 28

Candidate Starts for OliverWalter_15:

(Start: 28 @13261 has 296 MA's), (44, 13339), (48, 13354), (49, 13357), (60, 13420), (62, 13429), (64, 13438), (68, 13474), (77, 13510), (93, 13615),

Gene: Omniscient_15 Start: 13262, Stop: 13651, Start Num: 28

Candidate Starts for Omniscient_15:

(Start: 28 @13262 has 296 MA's), (44, 13340), (48, 13355), (49, 13358), (60, 13421), (62, 13430), (64, 13439), (68, 13475), (77, 13511), (93, 13616),

Gene: Oosterbaan_15 Start: 13254, Stop: 13643, Start Num: 28

Candidate Starts for Oosterbaan_15:

(Start: 28 @13254 has 296 MA's), (44, 13332), (48, 13347), (49, 13350), (60, 13413), (62, 13422), (64, 13431), (68, 13467), (77, 13503), (93, 13608),

Gene: OrangeOswald_17 Start: 14566, Stop: 15000, Start Num: 26

Candidate Starts for OrangeOswald_17:

(16, 14461), (Start: 26 @14566 has 48 MA's), (39, 14620), (Start: 47 @14686 has 2 MA's), (83, 14887), (84, 14890),

Gene: Orfeu_14 Start: 12953, Stop: 13342, Start Num: 28

Candidate Starts for Orfeu_14:

(Start: 28 @12953 has 296 MA's), (44, 13031), (48, 13046), (49, 13049), (60, 13112), (62, 13121), (64, 13130), (68, 13166), (77, 13202), (93, 13307),

Gene: Orion_15 Start: 13254, Stop: 13643, Start Num: 28

Candidate Starts for Orion_15:

(Start: 28 @13254 has 296 MA's), (44, 13332), (48, 13347), (49, 13350), (60, 13413), (62, 13422), (64, 13431), (68, 13467), (77, 13503), (93, 13608),

Gene: Orwigg_15 Start: 12946, Stop: 13335, Start Num: 28

Candidate Starts for Orwigg_15:

(Start: 28 @12946 has 296 MA's), (44, 13024), (48, 13039), (49, 13042), (60, 13105), (62, 13114), (64, 13123), (68, 13159), (77, 13195), (93, 13300),

Gene: PG1_15 Start: 13266, Stop: 13655, Start Num: 28

Candidate Starts for PG1_15:

(Start: 28 @13266 has 296 MA's), (44, 13344), (48, 13359), (49, 13362), (60, 13425), (62, 13434), (64, 13443), (68, 13479), (77, 13515), (93, 13620),

Gene: Pacifista_14 Start: 12957, Stop: 13346, Start Num: 28

Candidate Starts for Pacifista_14:

(Start: 28 @12957 has 296 MA's), (44, 13035), (48, 13050), (49, 13053), (60, 13116), (62, 13125), (64, 13134), (68, 13170), (77, 13206), (93, 13311),

Gene: Phaedrus_16 Start: 14604, Stop: 14918, Start Num: 47

Candidate Starts for Phaedrus_16:

(16, 14379), (Start: 26 @14484 has 48 MA's), (39, 14538), (Start: 47 @14604 has 2 MA's), (83, 14805), (84, 14808),

Gene: Phamished_15 Start: 13259, Stop: 13648, Start Num: 28

Candidate Starts for Phamished_15:

(Start: 28 @13259 has 296 MA's), (44, 13337), (48, 13352), (49, 13355), (60, 13418), (62, 13427), (64, 13436), (68, 13472), (77, 13508), (93, 13613),

Gene: Phareon_15 Start: 12960, Stop: 13349, Start Num: 28

Candidate Starts for Phareon_15:

(Start: 28 @12960 has 296 MA's), (44, 13038), (48, 13053), (49, 13056), (60, 13119), (62, 13128), (64, 13137), (68, 13173), (77, 13209), (93, 13314),

Gene: PhatCats2014_15 Start: 13269, Stop: 13658, Start Num: 28

Candidate Starts for PhatCats2014_15:

(Start: 28 @13269 has 296 MA's), (44, 13347), (48, 13362), (49, 13365), (60, 13428), (62, 13437), (64, 13446), (68, 13482), (77, 13518), (93, 13623),

Gene: PhatLouie_15 Start: 13253, Stop: 13642, Start Num: 28

Candidate Starts for PhatLouie_15:

(Start: 28 @13253 has 296 MA's), (44, 13331), (48, 13346), (49, 13349), (60, 13412), (62, 13421), (64, 13430), (68, 13466), (77, 13502), (93, 13607),

Gene: Phayeta_17 Start: 14442, Stop: 14876, Start Num: 26

Candidate Starts for Phayeta_17:

(16, 14337), (Start: 26 @14442 has 48 MA's), (39, 14496), (Start: 47 @14562 has 2 MA's), (83, 14763), (84, 14766),

Gene: Phelemich_16 Start: 15091, Stop: 15498, Start Num: 28

Candidate Starts for Phelemich_16:

(13, 14968), (Start: 26 @15076 has 48 MA's), (Start: 28 @15091 has 296 MA's), (48, 15196), (49, 15199), (55, 15244), (62, 15271), (68, 15316), (77, 15352), (83, 15394), (100, 15478),

Gene: PhenghisKhan_14 Start: 12812, Stop: 13201, Start Num: 28

Candidate Starts for PhenghisKhan_14:

(Start: 28 @12812 has 296 MA's), (44, 12890), (48, 12905), (49, 12908), (60, 12971), (62, 12980), (64, 12989), (68, 13025), (77, 13061), (93, 13166),

Gene: Pherdinand_15 Start: 13257, Stop: 13646, Start Num: 28

Candidate Starts for Pherdinand_15:

(Start: 28 @13257 has 296 MA's), (44, 13335), (48, 13350), (49, 13353), (60, 13416), (62, 13425), (64, 13434), (68, 13470), (77, 13506), (93, 13611),

Gene: Phergie_14 Start: 12806, Stop: 13195, Start Num: 28

Candidate Starts for Phergie_14:

(Start: 28 @12806 has 296 MA's), (44, 12884), (48, 12899), (49, 12902), (60, 12965), (62, 12974), (64, 12983), (68, 13019), (77, 13055), (93, 13160),

Gene: Philly_16 Start: 14432, Stop: 14866, Start Num: 26

Candidate Starts for Philly_16:

(16, 14327), (Start: 26 @14432 has 48 MA's), (39, 14486), (Start: 47 @14552 has 2 MA's), (83, 14753), (84, 14756),

Gene: Phipps_15 Start: 13232, Stop: 13621, Start Num: 28

Candidate Starts for Phipps_15:

(Start: 28 @13232 has 296 MA's), (44, 13310), (48, 13325), (49, 13328), (60, 13391), (62, 13400), (64, 13409), (68, 13445), (77, 13481), (93, 13586),

Gene: Phleuron_14 Start: 12812, Stop: 13201, Start Num: 28

Candidate Starts for Phleuron_14:

(Start: 28 @12812 has 296 MA's), (44, 12890), (48, 12905), (49, 12908), (60, 12971), (62, 12980), (64, 12989), (68, 13025), (77, 13061), (93, 13166),

Gene: Phlyer_17 Start: 15300, Stop: 15734, Start Num: 26

Candidate Starts for Phlyer_17:

(16, 15195), (Start: 26 @15300 has 48 MA's), (39, 15354), (Start: 47 @15420 has 2 MA's), (83, 15621), (84, 15624),

Gene: PhrankReynolds_14 Start: 12812, Stop: 13201, Start Num: 28

Candidate Starts for PhrankReynolds_14:

(Start: 28 @12812 has 296 MA's), (44, 12890), (48, 12905), (49, 12908), (60, 12971), (62, 12980), (64, 12989), (68, 13025), (77, 13061), (93, 13166),

Gene: PhrodoBaggins_14 Start: 13247, Stop: 13636, Start Num: 28

Candidate Starts for PhrodoBaggins_14:

(Start: 28 @13247 has 296 MA's), (44, 13325), (48, 13340), (49, 13343), (60, 13406), (62, 13415), (64, 13424), (68, 13460), (77, 13496), (93, 13601),

Gene: Phunky_15 Start: 13253, Stop: 13642, Start Num: 28

Candidate Starts for Phunky_15:

(Start: 28 @13253 has 296 MA's), (44, 13331), (48, 13346), (49, 13349), (60, 13412), (62, 13421), (64, 13430), (68, 13466), (77, 13502), (93, 13607),

Gene: Piglet_0014 Start: 13256, Stop: 13645, Start Num: 28

Candidate Starts for Piglet_0014:

(Start: 28 @13256 has 296 MA's), (44, 13334), (48, 13349), (49, 13352), (60, 13415), (62, 13424), (64, 13433), (68, 13469), (77, 13505), (93, 13610),

Gene: PinheadLarry_15 Start: 12972, Stop: 13361, Start Num: 28

Candidate Starts for PinheadLarry_15:

(Start: 28 @12972 has 296 MA's), (44, 13050), (48, 13065), (49, 13068), (60, 13131), (62, 13140), (64, 13149), (68, 13185), (77, 13221), (93, 13326),

Gene: Pinkman_14 Start: 12812, Stop: 13201, Start Num: 28

Candidate Starts for Pinkman_14:

(Start: 28 @12812 has 296 MA's), (44, 12890), (48, 12905), (49, 12908), (60, 12971), (62, 12980), (64, 12989), (68, 13025), (77, 13061), (93, 13166),

Gene: Pipefish_17 Start: 15450, Stop: 15884, Start Num: 26

Candidate Starts for Pipefish_17:

(Start: 26 @15450 has 48 MA's), (39, 15504), (Start: 47 @15570 has 2 MA's), (83, 15771), (84, 15774),

Gene: Pipsqueak_15 Start: 13259, Stop: 13648, Start Num: 28

Candidate Starts for Pipsqueak_15:

(Start: 28 @13259 has 296 MA's), (44, 13337), (48, 13352), (49, 13355), (60, 13418), (62, 13427), (64, 13436), (68, 13472), (77, 13508), (93, 13613),

Gene: Placalicious_14 Start: 12954, Stop: 13343, Start Num: 28

Candidate Starts for Placalicious_14:

(Start: 28 @12954 has 296 MA's), (44, 13032), (48, 13047), (49, 13050), (60, 13113), (62, 13122), (64, 13131), (68, 13167), (77, 13203), (93, 13308),

Gene: Plmatters_15 Start: 13253, Stop: 13642, Start Num: 28

Candidate Starts for Plmatters_15:

(Start: 28 @13253 has 296 MA's), (44, 13331), (48, 13346), (49, 13349), (60, 13412), (62, 13421), (64, 13430), (68, 13466), (77, 13502), (93, 13607),

Gene: Podrick_15 Start: 13244, Stop: 13633, Start Num: 28

Candidate Starts for Podrick_15:

(Start: 28 @13244 has 296 MA's), (44, 13322), (48, 13337), (49, 13340), (60, 13403), (62, 13412), (64, 13421), (68, 13457), (77, 13493), (93, 13598),

Gene: Pops_15 Start: 13256, Stop: 13645, Start Num: 28

Candidate Starts for Pops_15:

(Start: 28 @13256 has 296 MA's), (44, 13334), (48, 13349), (49, 13352), (60, 13415), (62, 13424), (64, 13433), (68, 13469), (77, 13505), (93, 13610),

Gene: Poster_14 Start: 13912, Stop: 14313, Start Num: 28

Candidate Starts for Poster_14:

(Start: 28 @13912 has 296 MA's), (49, 14014), (60, 14077), (62, 14086), (64, 14095), (68, 14131), (72, 14149), (75, 14158), (77, 14167), (81, 14188), (82, 14197), (99, 14290),

Gene: Potter_14 Start: 12967, Stop: 13356, Start Num: 28

Candidate Starts for Potter_14:

(Start: 28 @12967 has 296 MA's), (44, 13045), (48, 13060), (49, 13063), (60, 13126), (62, 13135), (64, 13144), (68, 13180), (77, 13216), (93, 13321),

Gene: Prickles_15 Start: 13247, Stop: 13636, Start Num: 28

Candidate Starts for Prickles_15:

(Start: 28 @13247 has 296 MA's), (44, 13325), (48, 13340), (49, 13343), (60, 13406), (62, 13415), (64, 13424), (68, 13460), (77, 13496), (93, 13601),

Gene: Prince_15 Start: 15136, Stop: 15537, Start Num: 28

Candidate Starts for Prince_15:

(Start: 28 @15136 has 296 MA's), (Start: 47 @15232 has 2 MA's), (49, 15238), (54, 15277), (60, 15301), (62, 15310), (68, 15355), (69, 15361), (72, 15373), (75, 15382), (77, 15391), (81, 15412), (82, 15421), (99, 15514),

Gene: ProfessorX_15 Start: 13245, Stop: 13634, Start Num: 28

Candidate Starts for ProfessorX_15:

(Start: 28 @13245 has 296 MA's), (44, 13323), (48, 13338), (49, 13341), (60, 13404), (62, 13413), (64, 13422), (68, 13458), (77, 13494), (93, 13599),

Gene: Puhltonio_15 Start: 13262, Stop: 13651, Start Num: 28

Candidate Starts for Puhltonio_15:

(Start: 28 @13262 has 296 MA's), (44, 13340), (48, 13355), (49, 13358), (60, 13421), (62, 13430), (64, 13439), (68, 13475), (77, 13511), (93, 13616),

Gene: QueenBeane_15 Start: 13253, Stop: 13642, Start Num: 28

Candidate Starts for QueenBeane_15:

(Start: 28 @13253 has 296 MA's), (44, 13331), (48, 13346), (49, 13349), (60, 13412), (62, 13421), (64, 13430), (68, 13466), (77, 13502), (93, 13607),

Gene: QueenPie_15 Start: 15510, Stop: 15911, Start Num: 28

Candidate Starts for QueenPie_15:

(Start: 28 @15510 has 296 MA's), (49, 15612), (60, 15675), (62, 15684), (64, 15693), (68, 15729), (72, 15747), (75, 15756), (77, 15765), (80, 15783), (81, 15786), (82, 15795), (86, 15822), (99, 15888),

Gene: Quisquiliae_15 Start: 13268, Stop: 13657, Start Num: 28

Candidate Starts for Quisquilliae_15:

(Start: 28 @13268 has 296 MA's), (44, 13346), (48, 13361), (49, 13364), (60, 13427), (62, 13436), (64, 13445), (68, 13481), (77, 13517), (93, 13622),

Gene: RagingRooster_17 Start: 14567, Stop: 15001, Start Num: 26

Candidate Starts for RagingRooster_17:

(16, 14462), (Start: 26 @14567 has 48 MA's), (39, 14621), (Start: 47 @14687 has 2 MA's), (83, 14888), (84, 14891),

Gene: RawrgerThat_15 Start: 14973, Stop: 15374, Start Num: 28

Candidate Starts for RawrgerThat_15:

(Start: 28 @14973 has 296 MA's), (49, 15075), (60, 15138), (62, 15147), (68, 15192), (69, 15198), (72, 15210), (77, 15228), (81, 15249), (82, 15258), (99, 15351),

Gene: RedMaple_14 Start: 13265, Stop: 13654, Start Num: 28

Candidate Starts for RedMaple_14:

(Start: 28 @13265 has 296 MA's), (44, 13343), (48, 13358), (49, 13361), (60, 13424), (62, 13433), (64, 13442), (68, 13478), (77, 13514), (93, 13619),

Gene: Reprobate_16 Start: 15088, Stop: 15495, Start Num: 28

Candidate Starts for Reprobate_16:

(13, 14965), (Start: 26 @15073 has 48 MA's), (Start: 28 @15088 has 296 MA's), (48, 15193), (49, 15196), (55, 15241), (62, 15268), (68, 15313), (77, 15349), (83, 15391), (100, 15475),

Gene: Reynauld_35 Start: 36999, Stop: 37397, Start Num: 36

Candidate Starts for Reynauld_35:

(Start: 36 @36999 has 1 MA's), (Start: 40 @37005 has 9 MA's), (50, 37083), (59, 37140), (69, 37203), (74, 37221), (87, 37299), (88, 37308), (102, 37389),

Gene: Rich_16 Start: 14987, Stop: 15394, Start Num: 28

Candidate Starts for Rich_16:

(6, 14729), (Start: 28 @14987 has 296 MA's), (48, 15092), (49, 15095), (62, 15167), (63, 15173), (68, 15212), (77, 15248), (83, 15290), (100, 15374),

Gene: Ricotta_14 Start: 12977, Stop: 13366, Start Num: 28

Candidate Starts for Ricotta_14:

(Start: 28 @12977 has 296 MA's), (44, 13055), (48, 13070), (49, 13073), (60, 13136), (62, 13145), (64, 13154), (68, 13190), (77, 13226), (93, 13331),

Gene: Riggan_15 Start: 13233, Stop: 13622, Start Num: 28

Candidate Starts for Riggan_15:

(Start: 28 @13233 has 296 MA's), (44, 13311), (48, 13326), (49, 13329), (60, 13392), (62, 13401), (64, 13410), (68, 13446), (77, 13482), (93, 13587),

Gene: Rimu_14 Start: 12965, Stop: 13354, Start Num: 28

Candidate Starts for Rimu_14:

(Start: 28 @12965 has 296 MA's), (44, 13043), (48, 13058), (49, 13061), (60, 13124), (62, 13133), (64, 13142), (68, 13178), (77, 13214), (93, 13319),

Gene: Rita130_16 Start: 14845, Stop: 15252, Start Num: 28

Candidate Starts for Rita130_16:

(13, 14722), (Start: 26 @14830 has 48 MA's), (Start: 28 @14845 has 296 MA's), (48, 14950), (49, 14953), (52, 14962), (62, 15025), (68, 15070), (77, 15106), (83, 15148), (100, 15232),

Gene: Rita1961_17 Start: 14562, Stop: 14996, Start Num: 26

Candidate Starts for Rita1961_17:

(16, 14457), (Start: 26 @14562 has 48 MA's), (39, 14616), (Start: 47 @14682 has 2 MA's), (83, 14883), (84, 14886),

Gene: Robyn_14 Start: 12826, Stop: 13215, Start Num: 28

Candidate Starts for Robyn_14:

(Start: 28 @12826 has 296 MA's), (44, 12904), (48, 12919), (49, 12922), (60, 12985), (62, 12994), (64, 13003), (68, 13039), (77, 13075), (93, 13180),

Gene: Roliet_15 Start: 13253, Stop: 13642, Start Num: 28

Candidate Starts for Roliet_15:

(Start: 28 @13253 has 296 MA's), (44, 13331), (48, 13346), (49, 13349), (60, 13412), (62, 13421), (64, 13430), (68, 13466), (77, 13502), (93, 13607),

Gene: RomaT_17 Start: 15347, Stop: 15781, Start Num: 26

Candidate Starts for RomaT_17:

(16, 15242), (Start: 26 @15347 has 48 MA's), (39, 15401), (Start: 47 @15467 has 2 MA's), (83, 15668), (84, 15671),

Gene: Roscoe_16 Start: 13494, Stop: 13883, Start Num: 28

Candidate Starts for Roscoe_16:

(Start: 28 @13494 has 296 MA's), (44, 13572), (48, 13587), (49, 13590), (60, 13653), (62, 13662), (64, 13671), (68, 13707), (77, 13743), (79, 13749), (93, 13848),

Gene: Roy17_15 Start: 12955, Stop: 13344, Start Num: 28

Candidate Starts for Roy17_15:

(Start: 28 @12955 has 296 MA's), (44, 13033), (48, 13048), (49, 13051), (60, 13114), (62, 13123), (64, 13132), (68, 13168), (77, 13204), (93, 13309),

Gene: SDcharge11_15 Start: 13234, Stop: 13623, Start Num: 28

Candidate Starts for SDcharge11_15:

(Start: 28 @13234 has 296 MA's), (44, 13312), (48, 13327), (49, 13330), (60, 13393), (62, 13402), (64, 13411), (68, 13447), (77, 13483), (93, 13588),

Gene: SamW_22 Start: 21107, Stop: 21475, Start Num: 40

Candidate Starts for SamW_22:

(8, 20891), (Start: 40 @21107 has 9 MA's), (52, 21191), (56, 21230), (62, 21254), (66, 21275), (76, 21332),

Gene: Samaymay_15 Start: 13253, Stop: 13642, Start Num: 28

Candidate Starts for Samaymay_15:

(Start: 28 @13253 has 296 MA's), (44, 13331), (48, 13346), (49, 13349), (60, 13412), (62, 13421), (64, 13430), (68, 13466), (77, 13502), (93, 13607),

Gene: SassyCat97_14 Start: 12960, Stop: 13349, Start Num: 28

Candidate Starts for SassyCat97_14:

(Start: 28 @12960 has 296 MA's), (44, 13038), (48, 13053), (49, 13056), (60, 13119), (62, 13128), (64, 13137), (68, 13173), (77, 13209), (79, 13215), (93, 13314),

Gene: Schadenfreude_14 Start: 12810, Stop: 13199, Start Num: 28

Candidate Starts for Schadenfreude_14:

(Start: 28 @12810 has 296 MA's), (44, 12888), (48, 12903), (49, 12906), (60, 12969), (62, 12978), (64, 12987), (68, 13023), (77, 13059), (93, 13164),

Gene: Schueller_14 Start: 12951, Stop: 13340, Start Num: 28

Candidate Starts for Schueller_14:

(Start: 28 @12951 has 296 MA's), (44, 13029), (48, 13044), (49, 13047), (60, 13110), (62, 13119), (64, 13128), (68, 13164), (77, 13200), (93, 13305),

Gene: Scoot17C_15 Start: 13254, Stop: 13643, Start Num: 28

Candidate Starts for Scoot17C_15:

(Start: 28 @13254 has 296 MA's), (44, 13332), (48, 13347), (49, 13350), (60, 13413), (62, 13422), (64, 13431), (68, 13467), (77, 13503), (93, 13608),

Gene: Scrick_14 Start: 12973, Stop: 13362, Start Num: 28

Candidate Starts for Scrick_14:

(Start: 28 @12973 has 296 MA's), (44, 13051), (48, 13066), (49, 13069), (60, 13132), (62, 13141), (64, 13150), (68, 13186), (77, 13222), (93, 13327),

Gene: Sejanus_13 Start: 12918, Stop: 13313, Start Num: 26

Candidate Starts for Sejanus_13:

(Start: 26 @12918 has 48 MA's), (34, 12951), (45, 13029), (64, 13125), (71, 13176), (73, 13182), (75, 13188), (77, 13197), (83, 13239),

Gene: Selr12_15 Start: 12978, Stop: 13367, Start Num: 28

Candidate Starts for Selr12_15:

(Start: 28 @12978 has 296 MA's), (44, 13056), (48, 13071), (49, 13074), (60, 13137), (62, 13146), (64, 13155), (68, 13191), (77, 13227), (93, 13332),

Gene: Serendipitous_16 Start: 15034, Stop: 15441, Start Num: 28

Candidate Starts for Serendipitous_16:

(Start: 26 @15019 has 48 MA's), (Start: 28 @15034 has 296 MA's), (37, 15058), (41, 15085), (48, 15139), (49, 15142), (62, 15214), (63, 15220), (68, 15259), (77, 15295), (83, 15337), (100, 15421),

Gene: Serendipity_15 Start: 13274, Stop: 13663, Start Num: 28

Candidate Starts for Serendipity_15:

(Start: 28 @13274 has 296 MA's), (44, 13352), (48, 13367), (49, 13370), (60, 13433), (62, 13442), (64, 13451), (68, 13487), (77, 13523), (93, 13628),

Gene: Serpentine_0015 Start: 13256, Stop: 13645, Start Num: 28

Candidate Starts for Serpentine_0015:

(Start: 28 @13256 has 296 MA's), (44, 13334), (48, 13349), (49, 13352), (60, 13415), (62, 13424), (64, 13433), (68, 13469), (77, 13505), (93, 13610),

Gene: Shatter_14 Start: 12949, Stop: 13329, Start Num: 35

Candidate Starts for Shatter_14:

(Start: 35 @12949 has 4 MA's), (Start: 47 @13024 has 2 MA's), (53, 13051), (65, 13120), (79, 13189), (81, 13204), (89, 13267), (91, 13282),

Gene: Sheila_15 Start: 13245, Stop: 13634, Start Num: 28

Candidate Starts for Sheila_15:

(Start: 28 @13245 has 296 MA's), (44, 13323), (48, 13338), (49, 13341), (60, 13404), (62, 13413), (64, 13422), (68, 13458), (77, 13494), (93, 13599),

Gene: Shenyu_16 Start: 14829, Stop: 15227, Start Num: 28

Candidate Starts for Shenyu_16:

(13, 14706), (Start: 26 @14814 has 48 MA's), (Start: 28 @14829 has 296 MA's), (48, 14925), (49, 14928), (62, 15000), (68, 15045), (77, 15081), (83, 15123), (100, 15207),

Gene: ShiVal_15 Start: 13247, Stop: 13636, Start Num: 28

Candidate Starts for ShiVal_15:

(Start: 28 @13247 has 296 MA's), (44, 13325), (48, 13340), (49, 13343), (60, 13406), (62, 13415), (64, 13424), (68, 13460), (77, 13496), (93, 13601),

Gene: Sigman_15 Start: 13244, Stop: 13633, Start Num: 28

Candidate Starts for Sigman_15:

(Start: 28 @13244 has 296 MA's), (44, 13322), (48, 13337), (49, 13340), (60, 13403), (62, 13412), (64, 13421), (68, 13457), (77, 13493), (93, 13598),

Gene: SilverBell_15 Start: 13259, Stop: 13648, Start Num: 28

Candidate Starts for SilverBell_15:

(Start: 28 @13259 has 296 MA's), (44, 13337), (48, 13352), (49, 13355), (60, 13418), (62, 13427), (64, 13436), (68, 13472), (77, 13508), (93, 13613),

Gene: Simielle_14 Start: 12945, Stop: 13334, Start Num: 28

Candidate Starts for Simielle_14:

(Start: 28 @12945 has 296 MA's), (44, 13023), (48, 13038), (49, 13041), (60, 13104), (62, 13113), (64, 13122), (68, 13158), (77, 13194), (93, 13299),

Gene: SirJeffery_16 Start: 14846, Stop: 15253, Start Num: 28

Candidate Starts for SirJeffery_16:

(13, 14723), (Start: 26 @14831 has 48 MA's), (Start: 28 @14846 has 296 MA's), (48, 14951), (49, 14954), (52, 14963), (62, 15026), (68, 15071), (77, 15107), (83, 15149), (100, 15233),

Gene: Sisko_14 Start: 13277, Stop: 13672, Start Num: 32

Candidate Starts for Sisko_14:

(Start: 32 @13277 has 7 MA's), (Start: 35 @13289 has 4 MA's), (43, 13319), (53, 13391), (65, 13460), (77, 13523), (79, 13529), (89, 13607), (91, 13622), (92, 13628),

Gene: Skippy_15 Start: 13238, Stop: 13627, Start Num: 28

Candidate Starts for Skippy_15:

(Start: 28 @13238 has 296 MA's), (44, 13316), (48, 13331), (49, 13334), (60, 13397), (62, 13406), (64, 13415), (68, 13451), (77, 13487), (93, 13592),

Gene: Slatt_15 Start: 13270, Stop: 13659, Start Num: 28

Candidate Starts for Slatt_15:

(Start: 28 @13270 has 296 MA's), (44, 13348), (48, 13363), (49, 13366), (60, 13429), (62, 13438), (64, 13447), (68, 13483), (77, 13519), (93, 13624),

Gene: SlippinJimmy_17 Start: 15451, Stop: 15765, Start Num: 47

Candidate Starts for SlippinJimmy_17:

(16, 15226), (Start: 26 @15331 has 48 MA's), (39, 15385), (Start: 47 @15451 has 2 MA's), (83, 15652), (84, 15655),

Gene: Soile_15 Start: 12965, Stop: 13354, Start Num: 28

Candidate Starts for Soile_15:

(Start: 28 @12965 has 296 MA's), (44, 13043), (48, 13058), (49, 13061), (60, 13124), (62, 13133), (64, 13142), (68, 13178), (77, 13214), (93, 13319),

Gene: Solosis_14 Start: 12972, Stop: 13361, Start Num: 28

Candidate Starts for Solosis_14:

(Start: 28 @12972 has 296 MA's), (44, 13050), (48, 13065), (49, 13068), (60, 13131), (62, 13140), (64, 13149), (68, 13185), (77, 13221), (93, 13326),

Gene: Sophia_14 Start: 12960, Stop: 13349, Start Num: 28

Candidate Starts for Sophia_14:

(Start: 28 @12960 has 296 MA's), (44, 13038), (48, 13053), (49, 13056), (60, 13119), (62, 13128), (64, 13137), (68, 13173), (77, 13209), (93, 13314),

Gene: Soto_15 Start: 13250, Stop: 13639, Start Num: 28

Candidate Starts for Soto_15:

(Start: 28 @13250 has 296 MA's), (44, 13328), (48, 13343), (49, 13346), (60, 13409), (62, 13418), (64, 13427), (68, 13463), (77, 13499), (93, 13604),

Gene: Sour_17 Start: 14711, Stop: 15097, Start Num: 31

Candidate Starts for Sour_17:

(Start: 31 @14711 has 1 MA's), (Start: 32 @14714 has 7 MA's), (45, 14792), (53, 14828), (70, 14936), (77, 14960), (79, 14966), (82, 14990), (86, 15017), (91, 15059), (98, 15080),

Gene: Spartan300_15 Start: 13250, Stop: 13639, Start Num: 28

Candidate Starts for Spartan300_15:

(Start: 28 @13250 has 296 MA's), (44, 13328), (48, 13343), (49, 13346), (60, 13409), (62, 13418), (64, 13427), (68, 13463), (77, 13499), (93, 13604),

Gene: Squid_15 Start: 12960, Stop: 13349, Start Num: 28

Candidate Starts for Squid_15:

(Start: 28 @12960 has 296 MA's), (44, 13038), (48, 13053), (49, 13056), (60, 13119), (62, 13128), (64, 13137), (68, 13173), (77, 13209), (93, 13314),

Gene: Squiggle_15 Start: 12960, Stop: 13349, Start Num: 28

Candidate Starts for Squiggle_15:

(Start: 28 @12960 has 296 MA's), (44, 13038), (48, 13053), (49, 13056), (60, 13119), (62, 13128), (64, 13137), (68, 13173), (77, 13209), (93, 13314),

Gene: StAB_22 Start: 21542, Stop: 21910, Start Num: 40

Candidate Starts for StAB_22:

(33, 21524), (Start: 40 @21542 has 9 MA's), (52, 21626), (62, 21689), (76, 21767),

Gene: Stiles_22 Start: 21096, Stop: 21464, Start Num: 40

Candidate Starts for Stiles_22:

(33, 21078), (Start: 40 @21096 has 9 MA's), (56, 21219), (57, 21222),

Gene: Stinger_13 Start: 13475, Stop: 13876, Start Num: 28

Candidate Starts for Stinger_13:

(Start: 28 @13475 has 296 MA's), (49, 13577), (54, 13616), (60, 13640), (68, 13694), (72, 13712), (75, 13721), (77, 13730), (80, 13748), (82, 13760),

Gene: StinkyVeggy_17 Start: 15081, Stop: 15383, Start Num: 48

Candidate Starts for StinkyVeggy_17:

(13, 14862), (Start: 26 @14970 has 48 MA's), (Start: 28 @14985 has 296 MA's), (48, 15081), (49, 15084), (62, 15156), (68, 15201), (77, 15237), (79, 15243), (83, 15279), (100, 15363),

Gene: Struggle_14 Start: 12806, Stop: 13195, Start Num: 28

Candidate Starts for Struggle_14:

(Start: 28 @12806 has 296 MA's), (44, 12884), (48, 12899), (49, 12902), (60, 12965), (62, 12974), (64, 12983), (68, 13019), (77, 13055), (93, 13160),

Gene: Suffolk_15 Start: 13252, Stop: 13641, Start Num: 28

Candidate Starts for Suffolk_15:

(Start: 28 @13252 has 296 MA's), (44, 13330), (48, 13345), (49, 13348), (60, 13411), (62, 13420), (64, 13429), (68, 13465), (77, 13501), (93, 13606),

Gene: Suigeneris_16 Start: 14831, Stop: 15253, Start Num: 26

Candidate Starts for Suigeneris_16:

(13, 14723), (Start: 26 @14831 has 48 MA's), (Start: 28 @14846 has 296 MA's), (48, 14951), (49, 14954), (52, 14963), (62, 15026), (68, 15071), (77, 15107), (83, 15149), (100, 15233),

Gene: Surely_15 Start: 13262, Stop: 13651, Start Num: 28

Candidate Starts for Surely_15:

(Start: 28 @13262 has 296 MA's), (44, 13340), (48, 13355), (49, 13358), (60, 13421), (62, 13430), (64, 13439), (68, 13475), (77, 13511), (93, 13616),

Gene: SwainyDoc_17 Start: 14684, Stop: 14998, Start Num: 47

Candidate Starts for SwainyDoc_17:

(16, 14459), (Start: 26 @14564 has 48 MA's), (39, 14618), (Start: 47 @14684 has 2 MA's), (83, 14885), (84, 14888),

Gene: Swiphy_15 Start: 13253, Stop: 13642, Start Num: 28

Candidate Starts for Swiphy_15:

(Start: 28 @13253 has 296 MA's), (44, 13331), (48, 13346), (49, 13349), (60, 13412), (62, 13421), (64, 13430), (68, 13466), (77, 13502), (93, 13607),

Gene: Swish_15 Start: 13248, Stop: 13637, Start Num: 28

Candidate Starts for Swish_15:

(Start: 28 @13248 has 296 MA's), (44, 13326), (48, 13341), (49, 13344), (60, 13407), (62, 13416), (64, 13425), (68, 13461), (77, 13497), (93, 13602),

Gene: SynergyX_17 Start: 14567, Stop: 15001, Start Num: 26

Candidate Starts for SynergyX_17:

(16, 14462), (Start: 26 @14567 has 48 MA's), (39, 14621), (Start: 47 @14687 has 2 MA's), (83, 14888), (84, 14891),

Gene: TPA2_24 Start: 15808, Stop: 16110, Start Num: 49

Candidate Starts for TPA2_24:

(5, 15427), (Start: 32 @15712 has 7 MA's), (39, 15736), (49, 15808), (53, 15829), (79, 15967), (82, 15991), (83, 16003), (91, 16060), (94, 16072), (97, 16081),

Gene: TallGrassMM_15 Start: 12978, Stop: 13367, Start Num: 28

Candidate Starts for TallGrassMM_15:

(Start: 28 @12978 has 296 MA's), (44, 13056), (48, 13071), (49, 13074), (60, 13137), (62, 13146), (64, 13155), (68, 13191), (77, 13227), (93, 13332),

Gene: Telesworld_14 Start: 12960, Stop: 13349, Start Num: 28

Candidate Starts for Telesworld_14:

(Start: 28 @12960 has 296 MA's), (44, 13038), (48, 13053), (49, 13056), (60, 13119), (62, 13128), (64, 13137), (68, 13173), (77, 13209), (93, 13314),

Gene: Thora_15 Start: 13262, Stop: 13651, Start Num: 28

Candidate Starts for Thora_15:

(Start: 28 @13262 has 296 MA's), (44, 13340), (48, 13355), (49, 13358), (60, 13421), (62, 13430), (64, 13439), (68, 13475), (77, 13511), (93, 13616),

Gene: ThreeOh3D2_15 Start: 13263, Stop: 13652, Start Num: 28

Candidate Starts for ThreeOh3D2_15:

(Start: 28 @13263 has 296 MA's), (44, 13341), (48, 13356), (49, 13359), (60, 13422), (62, 13431), (64, 13440), (68, 13476), (77, 13512), (93, 13617),

Gene: Thunderbird_14 Start: 12962, Stop: 13351, Start Num: 28

Candidate Starts for Thunderbird_14:

(Start: 28 @12962 has 296 MA's), (44, 13040), (48, 13055), (49, 13058), (60, 13121), (62, 13130), (64, 13139), (68, 13175), (77, 13211), (93, 13316),

Gene: Timmi_14 Start: 12972, Stop: 13361, Start Num: 28

Candidate Starts for Timmi_14:

(Start: 28 @12972 has 296 MA's), (44, 13050), (48, 13065), (49, 13068), (60, 13131), (62, 13140), (64, 13149), (68, 13185), (77, 13221), (93, 13326),

Gene: TinyTerror_17 Start: 14686, Stop: 15000, Start Num: 47

Candidate Starts for TinyTerror_17:

(16, 14461), (Start: 26 @14566 has 48 MA's), (39, 14620), (Start: 47 @14686 has 2 MA's), (83, 14887), (84, 14890),

Gene: TomBombadil_15 Start: 13256, Stop: 13645, Start Num: 28

Candidate Starts for TomBombadil_15:

(Start: 28 @13256 has 296 MA's), (44, 13334), (48, 13349), (49, 13352), (60, 13415), (62, 13424), (64, 13433), (68, 13469), (77, 13505), (93, 13610),

Gene: Tomlarah_15 Start: 13247, Stop: 13636, Start Num: 28

Candidate Starts for Tomlarah_15:

(Start: 28 @13247 has 296 MA's), (44, 13325), (48, 13340), (49, 13343), (60, 13406), (62, 13415), (64, 13424), (68, 13460), (77, 13496), (93, 13601),

Gene: Toni_14 Start: 12958, Stop: 13347, Start Num: 28

Candidate Starts for Toni_14:

(Start: 28 @12958 has 296 MA's), (44, 13036), (48, 13051), (49, 13054), (60, 13117), (62, 13126), (64, 13135), (68, 13171), (77, 13207), (93, 13312),

Gene: Tooj_15 Start: 13260, Stop: 13649, Start Num: 28

Candidate Starts for Tooj_15:

(Start: 28 @13260 has 296 MA's), (44, 13338), (48, 13353), (49, 13356), (60, 13419), (62, 13428), (64, 13437), (68, 13473), (77, 13509), (93, 13614),

Gene: Troy_22 Start: 21107, Stop: 21475, Start Num: 40

Candidate Starts for Troy_22:

(8, 20891), (Start: 40 @21107 has 9 MA's), (52, 21191), (56, 21230), (62, 21254), (66, 21275), (76, 21332),

Gene: True_14 Start: 12961, Stop: 13350, Start Num: 28

Candidate Starts for True_14:

(Start: 28 @12961 has 296 MA's), (44, 13039), (48, 13054), (49, 13057), (60, 13120), (62, 13129), (64, 13138), (68, 13174), (77, 13210), (93, 13315),

Gene: Trypo_15 Start: 13250, Stop: 13639, Start Num: 28

Candidate Starts for Trypo_15:

(Start: 28 @13250 has 296 MA's), (44, 13328), (48, 13343), (49, 13346), (60, 13409), (62, 13418), (64, 13427), (68, 13463), (77, 13499), (93, 13604),

Gene: Tydolla_17 Start: 15304, Stop: 15738, Start Num: 26

Candidate Starts for Tydolla_17:

(16, 15199), (Start: 26 @15304 has 48 MA's), (39, 15358), (Start: 47 @15424 has 2 MA's), (83, 15625), (84, 15628),

Gene: TyrionL_14 Start: 12812, Stop: 13201, Start Num: 28

Candidate Starts for TyrionL_14:

(Start: 28 @12812 has 296 MA's), (44, 12890), (48, 12905), (49, 12908), (60, 12971), (62, 12980), (64, 12989), (68, 13025), (77, 13061), (93, 13166),

Gene: UAch1_15 Start: 13271, Stop: 13660, Start Num: 28

Candidate Starts for UAch1_15:

(Start: 28 @13271 has 296 MA's), (44, 13349), (48, 13364), (49, 13367), (60, 13430), (62, 13439), (64, 13448), (68, 13484), (77, 13520), (93, 13625),

Gene: UncleHowie_15 Start: 12960, Stop: 13349, Start Num: 28

Candidate Starts for UncleHowie_15:

(Start: 28 @12960 has 296 MA's), (44, 13038), (48, 13053), (49, 13056), (60, 13119), (62, 13128), (64, 13137), (68, 13173), (77, 13209), (93, 13314),

Gene: Usavi_15 Start: 13262, Stop: 13651, Start Num: 28

Candidate Starts for Usavi_15:

(Start: 28 @13262 has 296 MA's), (44, 13340), (48, 13355), (49, 13358), (60, 13421), (62, 13430), (64, 13439), (68, 13475), (77, 13511), (93, 13616),

Gene: Vaishali24_14 Start: 12913, Stop: 13302, Start Num: 28

Candidate Starts for Vaishali24_14:

(Start: 28 @12913 has 296 MA's), (44, 12991), (48, 13006), (49, 13009), (60, 13072), (62, 13081), (64, 13090), (68, 13126), (77, 13162), (93, 13267),

Gene: Valjean_15 Start: 13253, Stop: 13642, Start Num: 28

Candidate Starts for Valjean_15:

(Start: 28 @13253 has 296 MA's), (44, 13331), (48, 13346), (49, 13349), (60, 13412), (62, 13421), (64, 13430), (68, 13466), (77, 13502), (93, 13607),

Gene: Vaticameos_15 Start: 12951, Stop: 13340, Start Num: 28

Candidate Starts for Vaticameos_15:

(Start: 28 @12951 has 296 MA's), (44, 13029), (48, 13044), (49, 13047), (60, 13110), (62, 13119), (64, 13128), (68, 13164), (77, 13200), (93, 13305),

Gene: Veritas_14 Start: 12800, Stop: 13189, Start Num: 28

Candidate Starts for Veritas_14:

(Start: 28 @12800 has 296 MA's), (44, 12878), (48, 12893), (49, 12896), (60, 12959), (62, 12968), (64, 12977), (68, 13013), (77, 13049), (93, 13154),

Gene: Vincenzo_16 Start: 15755, Stop: 16156, Start Num: 28

Candidate Starts for Vincenzo_16:

(Start: 28 @15755 has 296 MA's), (38, 15782), (49, 15857), (54, 15896), (60, 15920), (62, 15929), (67, 15968), (69, 15980), (72, 15992), (77, 16010), (80, 16028), (82, 16040), (83, 16052),

Gene: VioletZ_15 Start: 15009, Stop: 15410, Start Num: 28

Candidate Starts for VioletZ_15:

(Start: 28 @15009 has 296 MA's), (49, 15111), (60, 15174), (62, 15183), (68, 15228), (72, 15246), (77, 15264), (81, 15285), (82, 15294), (99, 15387),

Gene: Virapocalypse_15 Start: 13245, Stop: 13634, Start Num: 28

Candidate Starts for Virapocalypse_15:

(Start: 28 @13245 has 296 MA's), (44, 13323), (48, 13338), (49, 13341), (60, 13404), (62, 13413), (64, 13422), (68, 13458), (77, 13494), (93, 13599),

Gene: Virgeve_14 Start: 12966, Stop: 13355, Start Num: 28

Candidate Starts for Virgeve_14:

(Start: 28 @12966 has 296 MA's), (44, 13044), (48, 13059), (49, 13062), (60, 13125), (62, 13134), (64, 13143), (68, 13179), (77, 13215), (93, 13320),

Gene: Vista_15 Start: 13256, Stop: 13645, Start Num: 28

Candidate Starts for Vista_15:

(Start: 28 @13256 has 296 MA's), (44, 13334), (48, 13349), (49, 13352), (60, 13415), (62, 13424), (64, 13433), (68, 13469), (77, 13505), (93, 13610),

Gene: Vivaldi_15 Start: 13287, Stop: 13676, Start Num: 28

Candidate Starts for Vivaldi_15:

(Start: 28 @13287 has 296 MA's), (44, 13365), (48, 13380), (49, 13383), (60, 13446), (62, 13455), (64, 13464), (68, 13500), (77, 13536), (93, 13641),

Gene: Vortex_15 Start: 12967, Stop: 13356, Start Num: 28

Candidate Starts for Vortex_15:

(Start: 28 @12967 has 296 MA's), (44, 13045), (48, 13060), (49, 13063), (60, 13126), (62, 13135), (64, 13144), (68, 13180), (77, 13216), (93, 13321),

Gene: Waleliano_15 Start: 14979, Stop: 15380, Start Num: 28

Candidate Starts for Waleliano_15:

(Start: 28 @14979 has 296 MA's), (49, 15081), (60, 15144), (62, 15153), (68, 15198), (72, 15216), (77, 15234), (81, 15255), (82, 15264), (99, 15357),

Gene: Wallhey_14 Start: 12818, Stop: 13207, Start Num: 28

Candidate Starts for Wallhey_14:

(Start: 28 @12818 has 296 MA's), (44, 12896), (48, 12911), (49, 12914), (60, 12977), (62, 12986), (64, 12995), (68, 13031), (77, 13067), (93, 13172),

Gene: Waterdiva_15 Start: 13254, Stop: 13643, Start Num: 28

Candidate Starts for Waterdiva_15:

(Start: 28 @13254 has 296 MA's), (44, 13332), (48, 13347), (49, 13350), (60, 13413), (62, 13422), (64, 13431), (68, 13467), (77, 13503), (93, 13608),

Gene: Weher20_15 Start: 13244, Stop: 13633, Start Num: 28

Candidate Starts for Weher20_15:

(Start: 28 @13244 has 296 MA's), (44, 13322), (48, 13337), (49, 13340), (60, 13403), (62, 13412), (64, 13421), (68, 13457), (77, 13493), (93, 13598),

Gene: Windsor_14 Start: 12920, Stop: 13309, Start Num: 28

Candidate Starts for Windsor_14:

(Start: 28 @12920 has 296 MA's), (44, 12998), (48, 13013), (49, 13016), (60, 13079), (62, 13088), (64, 13097), (68, 13133), (77, 13169), (93, 13274),

Gene: Wooper_16 Start: 14369, Stop: 14770, Start Num: 25

Candidate Starts for Wooper_16:

(Start: 25 @14369 has 6 MA's), (Start: 28 @14390 has 296 MA's), (38, 14417), (51, 14495), (68, 14606), (75, 14633), (77, 14642), (79, 14648), (86, 14699), (88, 14717), (91, 14741), (96, 14759), (97, 14762),

Gene: Xavier_14 Start: 12972, Stop: 13361, Start Num: 28

Candidate Starts for Xavier_14:

(Start: 28 @12972 has 296 MA's), (44, 13050), (48, 13065), (49, 13068), (60, 13131), (62, 13140), (64, 13149), (68, 13185), (77, 13221), (93, 13326),

Gene: Xincheng_15 Start: 14800, Stop: 15201, Start Num: 28

Candidate Starts for Xincheng_15:

(Start: 28 @14800 has 296 MA's), (49, 14902), (54, 14941), (60, 14965), (62, 14974), (68, 15019), (72, 15037), (75, 15046), (77, 15055), (81, 15076), (82, 15085), (99, 15178),

Gene: Yago84_14 Start: 13286, Stop: 13681, Start Num: 32

Candidate Starts for Yago84_14:

(Start: 32 @13286 has 7 MA's), (Start: 35 @13298 has 4 MA's), (43, 13328), (53, 13400), (65, 13469), (77, 13532), (79, 13538), (89, 13616), (91, 13631), (92, 13637),

Gene: Yahalom_17 Start: 14578, Stop: 15012, Start Num: 26

Candidate Starts for Yahalom_17:

(16, 14473), (Start: 26 @14578 has 48 MA's), (39, 14632), (Start: 47 @14698 has 2 MA's), (83, 14899), (84, 14902),

Gene: Yeshua_16 Start: 14394, Stop: 14747, Start Num: 38

Candidate Starts for Yeshua_16:

(Start: 25 @14346 has 6 MA's), (38, 14394), (51, 14472), (68, 14583), (77, 14619), (79, 14625), (86, 14676), (88, 14694), (91, 14718), (97, 14739),

Gene: Yinz_17 Start: 14605, Stop: 15039, Start Num: 26

Candidate Starts for Yinz_17:

(16, 14500), (Start: 26 @14605 has 48 MA's), (39, 14659), (Start: 47 @14725 has 2 MA's), (83, 14926), (84, 14929),

Gene: Yoshand_15 Start: 13257, Stop: 13646, Start Num: 28

Candidate Starts for Yoshand_15:

(Start: 28 @13257 has 296 MA's), (44, 13335), (48, 13350), (49, 13353), (60, 13416), (62, 13425), (64, 13434), (68, 13470), (77, 13506), (93, 13611),

Gene: YouGoGlencoco_15 Start: 13250, Stop: 13639, Start Num: 28

Candidate Starts for YouGoGlencoco_15:

(Start: 28 @13250 has 296 MA's), (44, 13328), (48, 13343), (49, 13346), (60, 13409), (62, 13418), (64, 13427), (68, 13463), (77, 13499), (93, 13604),

Gene: Yvonnetastic_49 Start: 34634, Stop: 35044, Start Num: 27

Candidate Starts for Yvonnetastic_49:

(Start: 27 @34634 has 2 MA's), (46, 34745), (53, 34778), (55, 34802), (86, 34967),

Gene: Zaider_16 Start: 13483, Stop: 13872, Start Num: 28

Candidate Starts for Zaider_16:

(Start: 28 @13483 has 296 MA's), (44, 13561), (48, 13576), (49, 13579), (60, 13642), (62, 13651), (64, 13660), (68, 13696), (77, 13732), (93, 13837),

Gene: Zelda_15 Start: 13253, Stop: 13642, Start Num: 28

Candidate Starts for Zelda_15:

(Start: 28 @13253 has 296 MA's), (44, 13331), (48, 13346), (49, 13349), (60, 13412), (62, 13421), (64, 13430), (68, 13466), (77, 13502), (93, 13607),

Gene: Zemanar_16 Start: 14979, Stop: 15380, Start Num: 28

Candidate Starts for Zemanar_16:

(Start: 28 @14979 has 296 MA's), (49, 15081), (60, 15144), (62, 15153), (68, 15198), (72, 15216), (77, 15234), (81, 15255), (82, 15264), (99, 15357),

Gene: Zonia_15 Start: 13267, Stop: 13656, Start Num: 28

Candidate Starts for Zonia_15:

(Start: 28 @13267 has 296 MA's), (44, 13345), (48, 13360), (49, 13363), (60, 13426), (62, 13435), (64, 13444), (68, 13480), (77, 13516), (93, 13621),