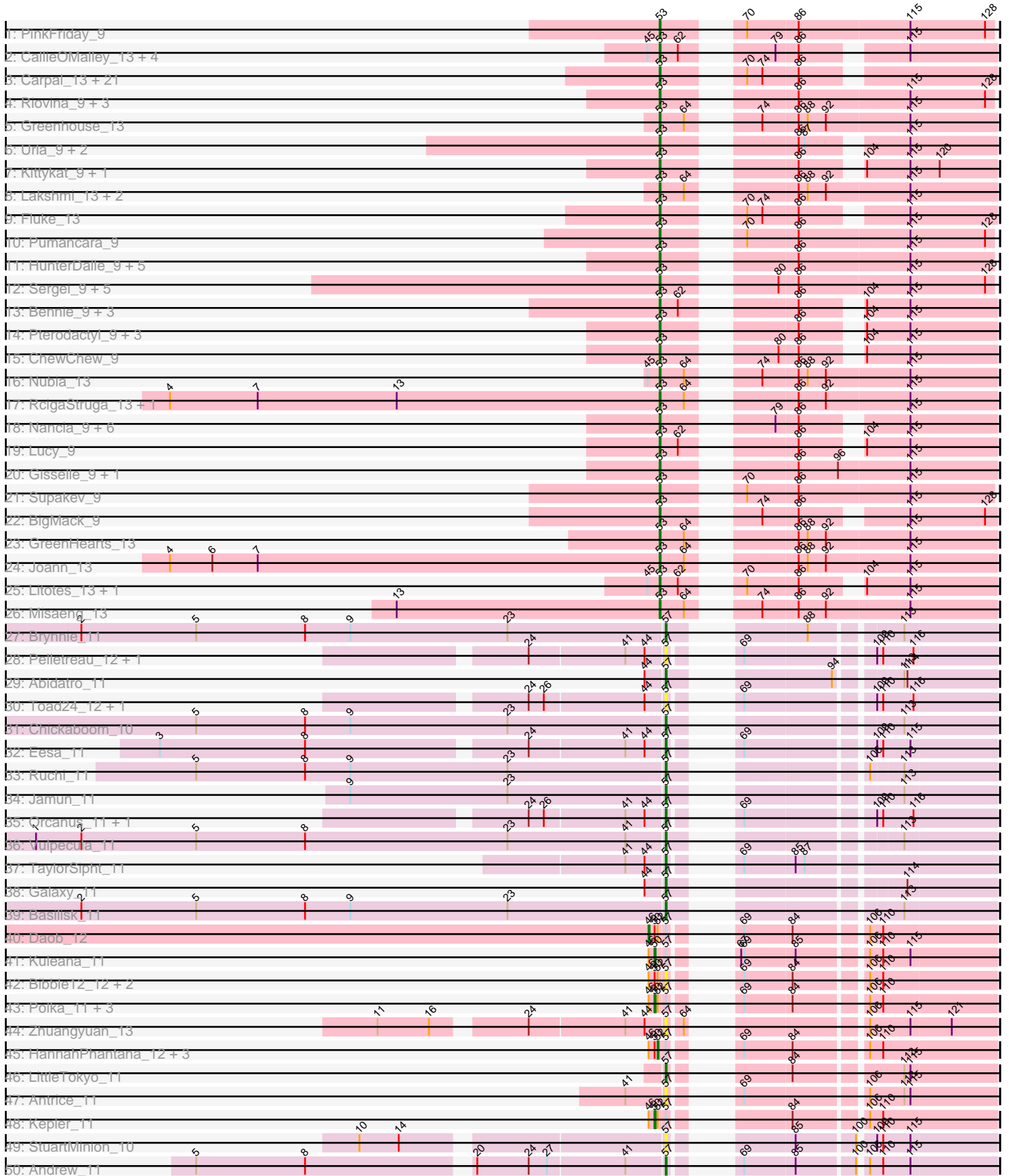
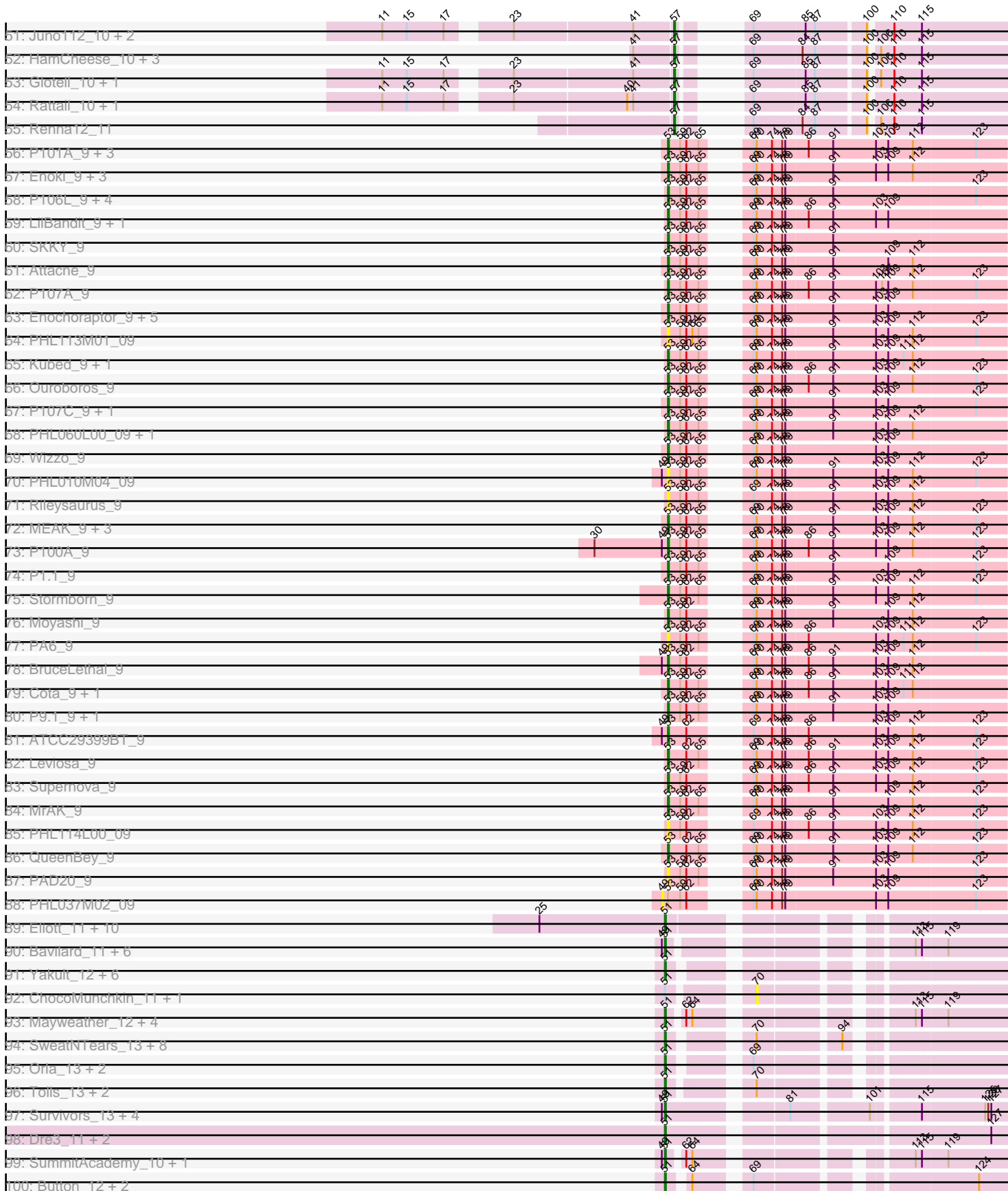


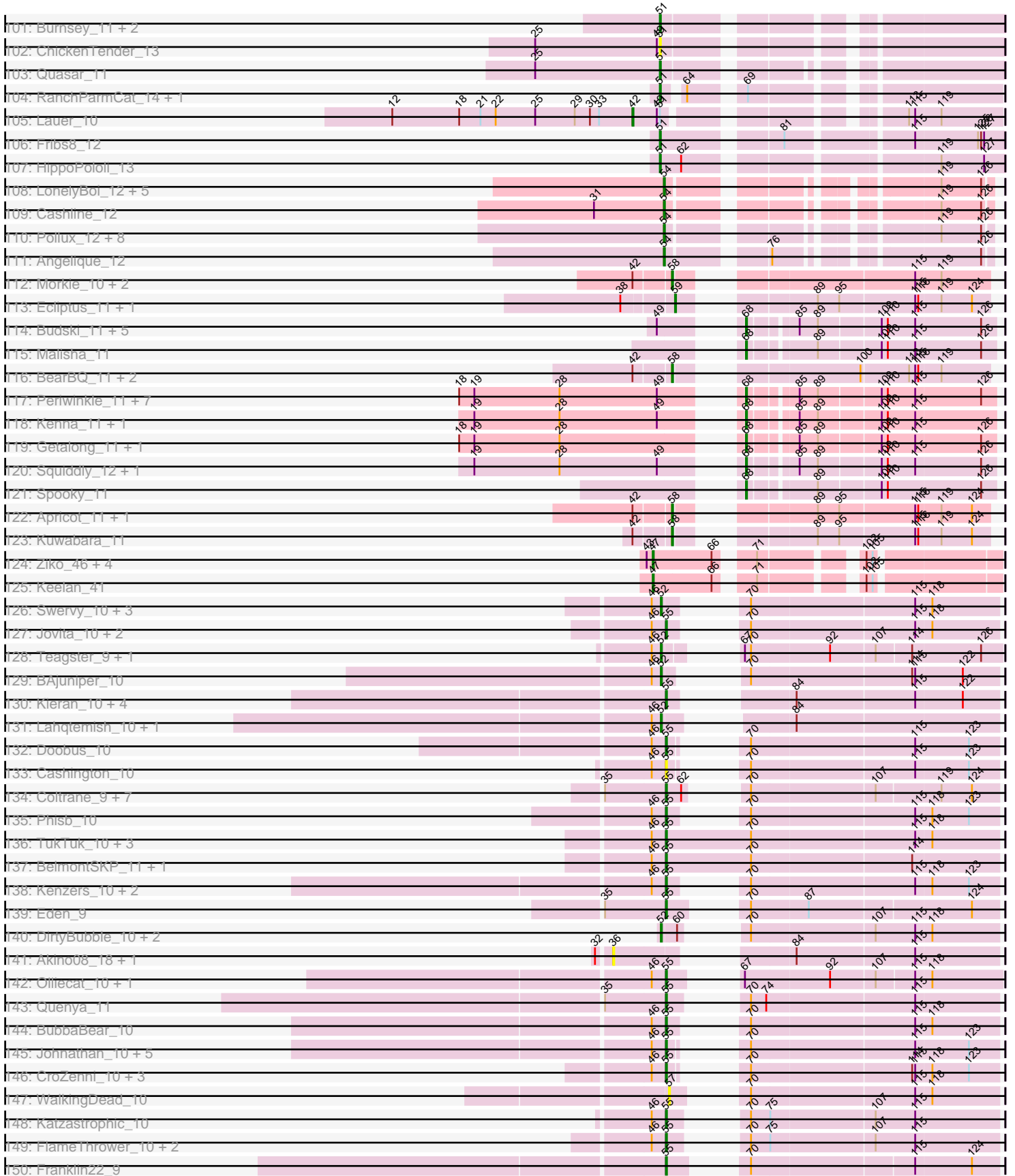
Pham 202578



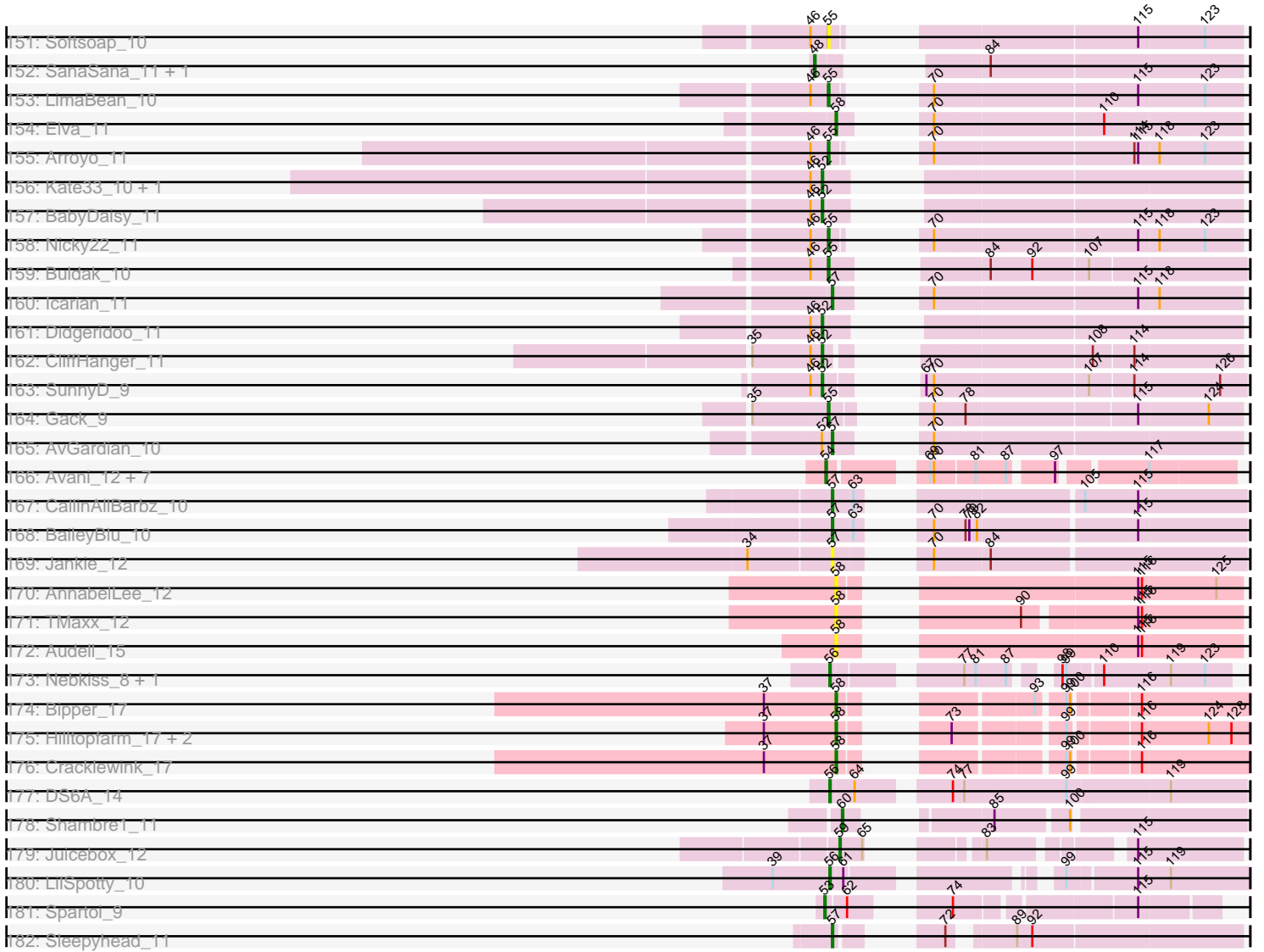
Pham 202578



Pham 202578



Pham 202578



Note: Tracks are now grouped by subcluster and scaled. Switching in subcluster is indicated by changes in track color. Track scale is now set by default to display the region 30 bp upstream of start 1 to 30 bp downstream of the last possible start. If this default region is judged to be packed too tightly with annotated starts, the track will be further scaled to only show that region of the ORF with annotated starts. This action will be indicated by adding "Zoomed" to the title. For starts, yellow indicates the location of called starts comprised solely of Glimmer/GeneMark auto-annotations, green indicates the location of called starts with at least 1 manual gene annotation.

Pham 202578 Report

This analysis was run 01/18/25 on database version 583.

Pham number 202578 has 421 members, 71 are drafts.

Phages represented in each track:

- Track 1 : PinkFriday_9
- Track 2 : CallieOMalley_13, AppleCider_13, Wayne_13, Suppi_13, Canowicakte_13
- Track 3 : Carpal_13, Dino_13, Cholula_13, Korra_13, Glenn_13, Kalizoi_13, Vallejo_13, Wawa_13, TattModd_13, BrotherBLo_13, Zorro_13, RAP15_13, Jumboset_13, Rozby_13, MrGloopy_13, Riverdale_13, MeganNoll_13, Scuttle_13, Potatoes_13, Savage2526_13, Immaculata_13, Beethoven_13
- Track 4 : Riovina_9, Eunoia_9, Aledel_9, OMalley_9
- Track 5 : Greenhouse_13
- Track 6 : Urla_9, EstebanJulior_9, MamaPearl_9
- Track 7 : Kittykat_9, Preamble_9
- Track 8 : Lakshmi_13, Oxynfrius_13, Albanese_13
- Track 9 : Fluke_13
- Track 10 : Pumancara_9
- Track 11 : HunterDalle_9, AustinPowers_9, DrRobert_9, Vulture_9, WonderBoy_9, Chridison_9
- Track 12 : Sergei_9, Maria1952_9, Temper16_9, Daiboju_9, KingBob_9, Herb_9
- Track 13 : Bennie_9, Moki_9, Huckleberry_9, HeadNerd_9
- Track 14 : Pterodactyl_9, Lennox_9, PitaDog_9, Makoto_9
- Track 15 : ChewChew_9
- Track 16 : Nubia_13
- Track 17 : RcigaStruga_13, Huntingdon_13
- Track 18 : Nancia_9, Bodacious_9, Lasagna_9, OurGirlNessie_9, Christian_9, CristinaYang_9, LilStuart_9
- Track 19 : Lucy_9
- Track 20 : Gisselle_9, DreamTeam_9
- Track 21 : Supakev_9
- Track 22 : BigMack_9
- Track 23 : GreenHearts_13
- Track 24 : Joann_13
- Track 25 : Litotes_13, PartyCup_13
- Track 26 : Misaeng_13
- Track 27 : Brynnie_11
- Track 28 : Pelletreau_12, Gravel_12
- Track 29 : Abidatro_11
- Track 30 : Toad24_12, KendraB23_12
- Track 31 : Chickaboom_10
- Track 32 : Eesa_11

- Track 33 : Ruchi_11
- Track 34 : Jamun_11
- Track 35 : Orcanus_11, Westrich_12
- Track 36 : Vulpecula_11
- Track 37 : TaylorSipht_11
- Track 38 : Galaxy_11
- Track 39 : Basilisk_11
- Track 40 : Daob_12
- Track 41 : Kuleana_11
- Track 42 : Bible12_12, Jerole_12, Colusalem_11
- Track 43 : Polka_11, Coral_11, Melons_12, Cote_12
- Track 44 : Zhuangyuan_13
- Track 45 : HannahPhantana_12, Bedetta_12, Amelia_12, Lunar_12
- Track 46 : LittleTokyo_11
- Track 47 : Antrice_11
- Track 48 : Kepler_11
- Track 49 : StuartMinion_10
- Track 50 : Andrew_11
- Track 51 : Juno112_10, Atlantica_10, AmiCi24_10
- Track 52 : HamCheese_10, PhluffyCoco_10, RedFox_10, Camara_10
- Track 53 : Glotell_10, KHumphrey_10
- Track 54 : Rattail_10, Leona_10
- Track 55 : Renna12_11
- Track 56 : P101A_9, DrParker_9, P100.1_9, P105_9
- Track 57 : Enoki_9, PAS50_9, P100D_9, PHL067M10_09
- Track 58 : P106L_9, P106I_9, P106C_9, P106M_9, P106A_9
- Track 59 : LilBandit_9, P104B_9
- Track 60 : SKKY_9
- Track 61 : Attacne_9
- Track 62 : P107A_9
- Track 63 : Enochoraptor_9, PHL071N05_09, Pirate_9, P14.4_9, P108C_9, Aquarius_9
- Track 64 : PHL113M01_09
- Track 65 : Kubed_9, PHL112N00_09
- Track 66 : Ouroboros_9
- Track 67 : P107C_9, ATCC29399BC_9
- Track 68 : PHL060L00_09, Lauchelly_9
- Track 69 : Wizzo_9
- Track 70 : PHL010M04_09
- Track 71 : Rileysaurus_9
- Track 72 : MEAK_9, Procrass1_9, Solid_9, P104A_9
- Track 73 : P100A_9
- Track 74 : P1.1_9
- Track 75 : Stormborn_9
- Track 76 : Moyashi_9
- Track 77 : PA6_9
- Track 78 : BruceLethal_9
- Track 79 : Cota_9, Keiki_9
- Track 80 : P9.1_9, PHL111M01_09
- Track 81 : ATCC29399BT_9
- Track 82 : Leviosa_9
- Track 83 : Supernova_9
- Track 84 : MrAK_9

- Track 85 : PHL114L00_09
- Track 86 : QueenBey_9
- Track 87 : PAD20_9
- Track 88 : PHL037M02_09
- Track 89 : Elliott_11, Nina_12, Starburst_12, RedBaron_12, Cozz_11, PsychoKiller_11, MunkgeeRoachy_11, Typhonomachy_12, Carsonalex_12, Sopespian_11, Axym_11
- Track 90 : Bavidard_11, Feastonyeet_10, Yucky_13, KayGee_11, BigChungus_10, Elinal_12, Vine_12
- Track 91 : Yakult_12, Amok_10, AndPeggy_10, AikoCarson_10, Yarn_10, Emalyn_10, BillDoor_13
- Track 92 : ChocoMunchkin_11, CanesSauce_11
- Track 93 : Mayweather_12, SheckWes_10, MAnor_11, CherryonLim_12, Pons_11
- Track 94 : SweatNTears_13, MScarn_13, SketchMex_10, Troje_11, Blondies_11, Horseradish_12, Yummy_12, Biskit_12, Buttrmlkdreams_11
- Track 95 : Orla_13, Nodigi_13, Hexbug_13
- Track 96 : Tolls_13, SteamedHams_13, GTE2_09
- Track 97 : Survivors_13, MaVan_13, Zareef_15, Azira_13, Nibbles_13
- Track 98 : Dre3_11, Cleo_11, Gibbous_11
- Track 99 : SummitAcademy_10, PotPie_11
- Track 100 : Button_12, Jamzy_14, GiKK_14
- Track 101 : Burnsey_11, Agatha_11, GoldHunter_12
- Track 102 : ChickenTender_13
- Track 103 : Quasar_11
- Track 104 : RanchParmCat_14, Margaret_14
- Track 105 : Lauer_10
- Track 106 : Fribs8_12
- Track 107 : HippoPololi_13
- Track 108 : LonelyBoi_12, Posh_12, BeeGee_12, Wrigley_12, Jablanski_12, Pytheas_12
- Track 109 : Cashline_12
- Track 110 : Pollux_12, BritBrat_12, EMSquaredA_12, Lilas_12, Bradissa_12, Floral_12, EnalisNailo_12, Confidence_12, Marteena_12
- Track 111 : Angelique_12
- Track 112 : Morkie_10, PhorbesPhlower_10, Lucky10_10
- Track 113 : Ecliptus_11, ODay_11
- Track 114 : Budski_11, Phabuloso_11, Kamaru_11, CheeseTouch_11, LitninMcQueen_11, Holliday_11
- Track 115 : Malisha_11
- Track 116 : BearBQ_11, MortyNRick_11, Birdsong_11
- Track 117 : Periwinkle_11, BotCity_11, Horus_11, BENtherdunthat_11, ShawBrad_11, Frickyeah_11, Leroy_11, Asapag_11
- Track 118 : Kenna_11, Lutum_11
- Track 119 : Getalong_11, Whitney_11
- Track 120 : Squiddly_12, Phistory_11
- Track 121 : Spooky_11
- Track 122 : Apricot_11, Crater_11
- Track 123 : Kuwabara_11
- Track 124 : Ziko_46, Guey18_48, Volt_45, Fryberger_43, Ronaldo_46
- Track 125 : Keelan_41
- Track 126 : Swervy_10, Slay_10, Finalfrontier_11, SarBear_10
- Track 127 : Jovita_10, Eula_10, QMacho_11
- Track 128 : Teagster_9, Shayna_9

- Track 129 : BAjuniper_10
- Track 130 : Kieran_10, Rona_10, Sharkboy_10, ChiliPepper_10, Dismas_10
- Track 131 : Lahqtemish_10, PastaFagioli_10
- Track 132 : Doobus_10
- Track 133 : Cashington_10
- Track 134 : Coltrane_9, Skylord_9, Clayda5_9, Rollins_9, Vitas_9, Brahms_9, Armstrong_9, Bernstein_9
- Track 135 : Phisb_10
- Track 136 : TukTuk_10, CupcakePrincess_10, Jabb_10, MsUbiquitous_10
- Track 137 : BelmontSKP_11, AnnaLie_11
- Track 138 : Kenzers_10, Lynlen_10, Albedo_10
- Track 139 : Eden_9
- Track 140 : DirtyBubble_10, Stromboli_10, BabyYoda_10
- Track 141 : Akino08_18, Loviatar_18
- Track 142 : Olliecat_10, Squircl_10
- Track 143 : Quenya_11
- Track 144 : BubbaBear_10
- Track 145 : Johnathan_10, Bengal_10, Avocadoman_10, Albright_10, Abigail_10, Burritobowl_10
- Track 146 : CroZenni_10, SansAfet_10, DickRichards_10, PhigPhack_10
- Track 147 : WalkingDead_10
- Track 148 : Katzastrophic_10
- Track 149 : FlameThrower_10, Celaena_10, Bachaco_10
- Track 150 : Franklin22_9
- Track 151 : Softsoap_10
- Track 152 : SanaSana_11, Stoor_10
- Track 153 : LimaBean_10
- Track 154 : Elva_11
- Track 155 : Arroyo_11
- Track 156 : Kate33_10, IndyLu_10
- Track 157 : BabyDaisy_11
- Track 158 : Nicky22_11
- Track 159 : Buldak_10
- Track 160 : Icarian_11
- Track 161 : Didgeridoo_11
- Track 162 : CliffHanger_11
- Track 163 : SunnyD_9
- Track 164 : Gack_9
- Track 165 : AvGardian_10
- Track 166 : Avani_12, Soul22_12, Che9d_12, Zapner_13, Blarby_13, Jabbawokkie_13, Demsculpinboyz_12, Yoshi_12
- Track 167 : CallinAllBarbz_10
- Track 168 : BaileyBlu_10
- Track 169 : Jankie_12
- Track 170 : AnnabelLee_12
- Track 171 : TMaxx_12
- Track 172 : Audell_15
- Track 173 : Nebkiss_8, Gaia_8
- Track 174 : Bipper_17
- Track 175 : Hilltopfarm_17, Typha_17, AuntGwenStacy_17
- Track 176 : Cracklewink_17
- Track 177 : DS6A_14
- Track 178 : Shambre1_11

- Track 179 : Juicebox_12
- Track 180 : LilSpotty_10
- Track 181 : Spartoi_9
- Track 182 : Sleepyhead_11

Summary of Final Annotations (See graph section above for start numbers):

The start number called the most often in the published annotations is 53, it was called in 127 of the 350 non-draft genes in the pham.

Genes that call this "Most Annotated" start:

- ATCC29399BC_9, ATCC29399BT_9, Albanese_13, Aledel_9, AppleCider_13, Aquarius_9, Attacne_9, AustinPowers_9, Beethoven_13, Bennie_9, BigMack_9, Bodacious_9, BrotherBLo_13, BruceLethal_9, CallieOMalley_13, Canowicakte_13, Carpal_13, ChewChew_9, Cholula_13, Chridison_9, Christian_9, Cota_9, CristinaYang_9, Daiboju_9, Dino_13, DrParker_9, DrRobert_9, DreamTeam_9, Enochoraptor_9, Enoki_9, EstebanJulior_9, Eunoia_9, Fluke_13, Gisselle_9, Glenn_13, GreenHearts_13, Greenhouse_13, HeadNerd_9, Herb_9, Huckleberry_9, HunterDalle_9, Huntingdon_13, Immaculata_13, Joann_13, Jumboset_13, Kalizoi_13, Keiki_9, KingBob_9, Kittykat_9, Korra_13, Kubed_9, Lakshmi_13, Lasagna_9, Lauchelly_9, Lennox_9, Leviosa_9, LilBandit_9, LilStuart_9, Litotes_13, Lucy_9, MEAK_9, Makoto_9, MamaPearl_9, Maria1952_9, MeganNoll_13, Misaeng_13, Moki_9, Moyashi_9, MrAK_9, MrGloopy_13, Nancia_9, Nubia_13, OMalley_9, OurGirlNessie_9, Ouroboros_9, Oxynfrius_13, P1.1_9, P100.1_9, P100A_9, P100D_9, P101A_9, P104A_9, P104B_9, P105_9, P106A_9, P106C_9, P106I_9, P106L_9, P106M_9, P107A_9, P107C_9, P108C_9, P14.4_9, P9.1_9, PA6_9, PAD20_9, PAS50_9, PHL010M04_09, PHL060L00_09, PHL067M10_09, PHL071N05_09, PHL111M01_09, PHL112N00_09, PHL113M01_09, PHL114L00_09, PartyCup_13, PinkFriday_9, Pirate_9, PitaDog_9, Potatoes_13, Preamble_9, Procrass1_9, Pterodactyl_9, Pumancara_9, QueenBey_9, RAP15_13, RcigaStruga_13, Rileysaurus_9, Riovina_9, Riverdale_13, Rozby_13, SKKY_9, Savage2526_13, Scuttle_13, Sergei_9, Solid_9, Spartoi_9, Stormborn_9, Supakev_9, Supernova_9, Suppi_13, TattModd_13, Temper16_9, Urla_9, Vallejo_13, Vulture_9, Wawa_13, Wayne_13, Wizzo_9, WonderBoy_9, Zorro_13,

Genes that have the "Most Annotated" start but do not call it:

- PHL037M02_09,

Genes that do not have the "Most Annotated" start:

- Abidatro_11, Abigail_10, Agatha_11, AikoCarson_10, Akino08_18, Albedo_10, Albright_10, Amelia_12, AmiCi24_10, Amok_10, AndPeggy_10, Andrew_11, Angelique_12, AnnaLie_11, AnnabelLee_12, Antrice_11, Apricot_11, Armstrong_9, Arroyo_11, Asapag_11, Atlantica_10, Audell_15, AuntGwenStacy_17, AvGuardian_10, Avani_12, Avocadoman_10, Axym_11, Azira_13, BAjuniper_10, BENtherdunthat_11, BabyDaisy_11, BabyYoda_10, Bachaco_10, BaileyBlu_10, Basilisk_11, Bavillard_11, BearBQ_11, Bedetta_12, BeeGee_12, BelmontSKP_11, Bengal_10, Bernstein_9, Bibble12_12, BigChungus_10, BillDoor_13, Bipper_17, Birdsong_11, Biskit_12, Blarby_13, Blondies_11, BotCity_11, Bradissa_12, Brahms_9, BritBrat_12, Brynnie_11, BubbaBear_10, Budski_11, Buldak_10, Burnsey_11, Burritobowl_10, Button_12, Buttrmlkdreams_11, CallinAllBarbz_10, Camara_10, CanesSauce_11,

Carsonalex_12, Cashington_10, Cashline_12, Celaena_10, Che9d_12, CheeseTouch_11, CherryonLim_12, Chickaboom_10, ChickenTender_13, ChiliPepper_10, ChocoMunchkin_11, Clayda5_9, Cleo_11, CliffHanger_11, Coltrane_9, Colusalem_11, Confidence_12, Coral_11, Cote_12, Cozz_11, Cracklewink_17, Crater_11, CroZenni_10, CupcakePrincess_10, DS6A_14, Daob_12, Demsculpinboyz_12, DickRichards_10, Didgeridoo_11, DirtyBubble_10, Dismas_10, Doobus_10, Dre3_11, EMSquaredA_12, Ecliptus_11, Eden_9, Eesa_11, Elinal_12, Elliott_11, Elva_11, Emalyn_10, EnalisNailo_12, Eula_10, Feastonyeet_10, Finalfrontier_11, FlameThrower_10, Floral_12, Franklin22_9, Fribs8_12, Frickyeah_11, Fryberger_43, GTE2_09, Gack_9, Gaia_8, Galaxy_11, Getalong_11, GiKK_14, Gibbous_11, Glotell_10, GoldHunter_12, Gravel_12, Guey18_48, HamCheese_10, HannahPhantana_12, Hexbug_13, Hilltopfarm_17, HippoPololi_13, Holliday_11, Horseradish_12, Horus_11, Icarian_11, IndyLu_10, Jabb_10, Jabbawokkie_13, Jablanski_12, Jamun_11, Jamzy_14, Jankie_12, Jerole_12, Johnathan_10, Jovita_10, Juicebox_12, Juno112_10, KHumphrey_10, Kamaru_11, Kate33_10, Katzastrophic_10, KayGee_11, Keelan_41, KendraB23_12, Kenna_11, Kenzers_10, Kepler_11, Kieran_10, Kuleana_11, Kuwabara_11, Lahqtemish_10, Lauer_10, Leona_10, Leroy_11, LilSpotty_10, Lilas_12, LimaBean_10, LitninMcQueen_11, LittleTokyo_11, LonelyBoi_12, Loviatar_18, Lucky10_10, Lunar_12, Lutum_11, Lynlen_10, MAnor_11, MScarn_13, MaVan_13, Malisha_11, Margaret_14, Marteena_12, Mayweather_12, Melons_12, Morkie_10, MortyNRick_11, MsUbiquitous_10, MunkgeeRoachy_11, Nebkiss_8, Nibbles_13, Nicky22_11, Nina_12, Nodigi_13, ODay_11, Olliecat_10, Orcanus_11, Orla_13, PastaFagioli_10, Pelletreau_12, Periwinkle_11, Phabuloso_11, PhigPhack_10, Phisb_10, Phistory_11, PhluffyCoco_10, PhorbPhlower_10, Polka_11, Pollux_12, Pons_11, Posh_12, PotPie_11, PsychoKiller_11, Pytheas_12, QMacho_11, Quasar_11, Quenya_11, RanchParmCat_14, Rattail_10, RedBaron_12, RedFox_10, Renna12_11, Rollins_9, Rona_10, Ronaldo_46, Ruchi_11, SanaSana_11, SansAfet_10, SarBear_10, Shambre1_11, Sharkboy_10, ShawBrad_11, Shayna_9, SheckWes_10, SketchMex_10, Skylord_9, Slay_10, Sleepyhead_11, Softsoap_10, Sopespian_11, Soul22_12, Spooky_11, Squiddly_12, Squirrel_10, Starburst_12, SteamedHams_13, Stoor_10, Stromboli_10, StuartMinion_10, SummitAcademy_10, SunnyD_9, Survivors_13, SweatNTears_13, Swervy_10, TMaxx_12, TaylorSipht_11, Teagster_9, Toad24_12, Tolls_13, Troje_11, TukTuk_10, Typha_17, Typhonomachy_12, Vine_12, Vitas_9, Volt_45, Vulpecula_11, WalkingDead_10, Westrich_12, Whitney_11, Wrigley_12, Yakult_12, Yarn_10, Yoshi_12, Yucky_13, Yummy_12, Zapner_13, Zareef_15, Zhuangyuan_13, Ziko_46,

Summary by start number:

Start 36:

- Found in 2 of 421 (0.5%) of genes in pham
- No Manual Annotations of this start.
- Called 100.0% of time when present
- Phage (with cluster) where this start called: Akino08_18 (EB), Loviatar_18 (EB),

Start 42:

- Found in 10 of 421 (2.4%) of genes in pham
- Manual Annotations of this start: 1 of 350
- Called 10.0% of time when present
- Phage (with cluster) where this start called: Lauer_10 (CT),

Start 46:

- Found in 66 of 421 (15.7%) of genes in pham
- Manual Annotations of this start: 1 of 350
- Called 1.5% of time when present
- Phage (with cluster) where this start called: Daob_12 (AS2),

Start 47:

- Found in 6 of 421 (1.4%) of genes in pham
- Manual Annotations of this start: 6 of 350
- Called 100.0% of time when present
- Phage (with cluster) where this start called: Fryberger_43 (DP), Guey18_48 (DP), Keelan_41 (DP), Ronaldo_46 (DP), Volt_45 (DP), Ziko_46 (DP),

Start 48:

- Found in 2 of 421 (0.5%) of genes in pham
- Manual Annotations of this start: 2 of 350
- Called 100.0% of time when present
- Phage (with cluster) where this start called: SanaSana_11 (EB), Stoor_10 (EB),

Start 49:

- Found in 39 of 421 (9.3%) of genes in pham
- No Manual Annotations of this start.
- Called 2.6% of time when present
- Phage (with cluster) where this start called: PHL037M02_09 (BU),

Start 50:

- Found in 14 of 421 (3.3%) of genes in pham
- Manual Annotations of this start: 6 of 350
- Called 42.9% of time when present
- Phage (with cluster) where this start called: Coral_11 (AS2), Cote_12 (AS2), Kepler_11 (AS2), Kuleana_11 (AS2), Melons_12 (AS2), Polka_11 (AS2),

Start 51:

- Found in 70 of 421 (16.6%) of genes in pham
- Manual Annotations of this start: 53 of 350
- Called 95.7% of time when present
- Phage (with cluster) where this start called: Agatha_11 (CT), AikoCarson_10 (CT), Amok_10 (CT), AndPeggy_10 (CT), Axym_11 (CT), Azira_13 (CT), Bavilard_11 (CT), BigChungus_10 (CT), BillDoor_13 (CT), Biskit_12 (CT), Blondies_11 (CT), Burnsey_11 (CT), Button_12 (CT), Buttrmlkdreams_11 (CT), Carsonalex_12 (CT), CherryonLim_12 (CT), ChickenTender_13 (CT), Cleo_11 (CT), Cozz_11 (CT), Dre3_11 (CT), Elinal_12 (CT), Elliott_11 (CT), Emalyn_10 (CT), Feastonyeet_10 (CT), Fribs8_12 (CT), GTE2_09 (CT), GiKK_14 (CT), Gibbous_11 (CT), GoldHunter_12 (CT), Hexbug_13 (CT), HippoPololi_13 (CT), Horseradish_12 (CT), Jamzy_14 (CT), KayGee_11 (CT), MAnor_11 (CT), MScarn_13 (CT), MaVan_13 (CT), Margaret_14 (CT), Mayweather_12 (CT), MunkgeeRoachy_11 (CT), Nibbles_13 (CT), Nina_12 (CT), Nodigi_13 (CT), Orla_13 (CT), Pons_11 (CT), PotPie_11 (CT), PsychoKiller_11 (CT), Quasar_11 (CT), RanchParmCat_14 (CT), RedBaron_12 (CT), SheckWes_10 (CT), SketchMex_10 (CT), Sopespian_11 (CT), Starburst_12 (CT), SteamedHams_13 (CT), SummitAcademy_10 (CT), Survivors_13 (CT), SweatNTears_13 (CT), Tolls_13 (CT), Troje_11 (CT), Typhonmarchy_12 (CT), Vine_12 (CT), Yakult_12 (CT), Yarn_10 (CT), Yucky_13 (CT), Yummy_12 (CT), Zareef_15 (CT),

Start 52:

- Found in 32 of 421 (7.6%) of genes in pham
- Manual Annotations of this start: 19 of 350
- Called 68.8% of time when present
- Phage (with cluster) where this start called: Amelia_12 (AS2), BAjuniper_10 (EB), BabyDaisy_11 (EB), BabyYoda_10 (EB), Bedetta_12 (AS2), CliffHanger_11 (EB), Didgeridoo_11 (EB), DirtyBubble_10 (EB), Finalfrontier_11 (EB), HannahPhantana_12 (AS2), IndyLu_10 (EB), Kate33_10 (EB), Lahqtemish_10 (EB), Lunar_12 (AS2), PastaFagioli_10 (EB), SarBear_10 (EB), Shayna_9 (EB), Slay_10 (EB), Stromboli_10 (EB), SunnyD_9 (EB), Swervy_10 (EB), Teagster_9 (EB),

Start 53:

- Found in 142 of 421 (33.7%) of genes in pham
- Manual Annotations of this start: 127 of 350
- Called 99.3% of time when present
- Phage (with cluster) where this start called: ATCC29399BC_9 (BU), ATCC29399BT_9 (BU), Albanese_13 (AK), Aledel_9 (AK), AppleCider_13 (AK), Aquarius_9 (BU), Attacne_9 (BU), AustinPowers_9 (AK), Beethoven_13 (AK), Bennie_9 (AK), BigMack_9 (AK), Bodacious_9 (AK), BrotherBLo_13 (AK), BruceLethal_9 (BU), CallieOMalley_13 (AK), Canowicakte_13 (AK), Carpal_13 (AK), ChewChew_9 (AK), Cholula_13 (AK), Chridison_9 (AK), Christian_9 (AK), Cota_9 (BU), CristinaYang_9 (AK), Daiboju_9 (AK), Dino_13 (AK), DrParker_9 (BU), DrRobert_9 (AK), DreamTeam_9 (AK), Enochoraptor_9 (BU), Enoki_9 (BU), EstebanJulior_9 (AK), Eunoia_9 (AK), Fluke_13 (AK), Gisselle_9 (AK), Glenn_13 (AK), GreenHearts_13 (AK), Greenhouse_13 (AK), HeadNerd_9 (AK), Herb_9 (AK), Huckleberry_9 (AK), HunterDalle_9 (AK), Huntingdon_13 (AK), Immaculata_13 (AK), Joann_13 (AK), Jumboset_13 (AK), Kalizoi_13 (AK), Keiki_9 (BU), KingBob_9 (AK), Kittykat_9 (AK), Korra_13 (AK), Kubed_9 (BU), Lakshmi_13 (AK), Lasagna_9 (AK), Lauchelly_9 (BU), Lennox_9 (AK), Leviosa_9 (BU), LilBandit_9 (BU), LilStuart_9 (AK), Litotes_13 (AK), Lucy_9 (AK), MEAK_9 (BU), Makoto_9 (AK), MamaPearl_9 (AK), Maria1952_9 (AK), MeganNoll_13 (AK), Misaeng_13 (AK), Moki_9 (AK), Moyashi_9 (BU), MrAK_9 (BU), MrGloopy_13 (AK), Nancia_9 (AK), Nubia_13 (AK), OMalley_9 (AK), OurGirlNessie_9 (AK), Ouroboros_9 (BU), Oxyntrius_13 (AK), P1.1_9 (BU), P100.1_9 (BU), P100A_9 (BU), P100D_9 (BU), P101A_9 (BU), P104A_9 (BU), P104B_9 (BU), P105_9 (BU), P106A_9 (BU), P106C_9 (BU), P106I_9 (BU), P106L_9 (BU), P106M_9 (BU), P107A_9 (BU), P107C_9 (BU), P108C_9 (BU), P14.4_9 (BU), P9.1_9 (BU), PA6_9 (BU), PAD20_9 (BU), PAS50_9 (BU), PHL010M04_09 (BU), PHL060L00_09 (BU), PHL067M10_09 (BU), PHL071N05_09 (BU), PHL111M01_09 (BU), PHL112N00_09 (BU), PHL113M01_09 (BU), PHL114L00_09 (BU), PartyCup_13 (AK), PinkFriday_9 (AK), Pirate_9 (BU), PitaDog_9 (AK), Potatoes_13 (AK), Preamble_9 (AK), Procrass1_9 (BU), Pterodactyl_9 (AK), Pumancara_9 (AK), QueenBey_9 (BU), RAP15_13 (AK), RcigaStruga_13 (AK), Rileysaurus_9 (BU), Riovina_9 (AK), Riverdale_13 (AK), Rozby_13 (AK), SKKY_9 (BU), Savage2526_13 (AK), Scuttle_13 (AK), Sergei_9 (AK), Solid_9 (BU), Spartoi_9 (singleton), Stormborn_9 (BU), Supakev_9 (AK), Supernova_9 (BU), Suppi_13 (AK), TattModd_13 (AK), Temper16_9 (AK), Urla_9 (AK), Vallejo_13 (AK), Vulture_9 (AK), Wawa_13 (AK), Wayne_13 (AK), Wizzo_9 (BU), WonderBoy_9 (AK), Zorro_13 (AK),

Start 54:

- Found in 25 of 421 (5.9%) of genes in pham
- Manual Annotations of this start: 24 of 350
- Called 100.0% of time when present
- Phage (with cluster) where this start called: Angelique_12 (CY1), Avani_12 (F2), BeeGee_12 (CY), Blarby_13 (F), Bradissa_12 (CY1), BritBrat_12 (CY2), Cashline_12

(CY), Che9d_12 (F2), Confidence_12 (CY1), Demsculpinboyz_12 (F2), EMSquaredA_12 (CY1), EnalisNailo_12 (CY1), Floral_12 (CY1), Jabbawokkie_13 (F2), Jablanski_12 (CY), Lilas_12 (CY1), LonelyBoi_12 (CY), Marteena_12 (CY1), Pollux_12 (CY1), Posh_12 (CY), Pytheas_12 (CY), Soul22_12 (F2), Wrigley_12 (CY), Yoshi_12 (F2), Zapner_13 (F2),

Start 55:

- Found in 54 of 421 (12.8%) of genes in pham
- Manual Annotations of this start: 47 of 350
- Called 100.0% of time when present
- Phage (with cluster) where this start called: Abigail_10 (EB), Albedo_10 (EB), Albright_10 (EB), AnnaLie_11 (EB), Armstrong_9 (EB), Arroyo_11 (EB), Avocadoman_10 (EB), Bachaco_10 (EB), BelmontSKP_11 (EB), Bengal_10 (EB), Bernstein_9 (EB), Brahms_9 (EB), BubbaBear_10 (EB), Buldak_10 (EB), Burritobowl_10 (EB), Cashington_10 (EB), Celaena_10 (EB), ChiliPepper_10 (EB), Clayda5_9 (EB), Coltrane_9 (EB), CroZenni_10 (EB), CupcakePrincess_10 (EB), DickRichards_10 (EB), Dismas_10 (EB), Doobus_10 (EB), Eden_9 (EB), Eula_10 (EB), FlameThrower_10 (EB), Franklin22_9 (EB), Gack_9 (EB), Jabb_10 (EB), Johnathan_10 (EB), Jovita_10 (EB), Katzastrophic_10 (EB), Kenzers_10 (EB), Kieran_10 (EB), LimaBean_10 (EB), Lynlen_10 (EB), MsUbiquitous_10 (EB), Nicky22_11 (EB), Olliecat_10 (EB), PhigPhack_10 (EB), Phisb_10 (EB), QMacho_11 (EB), Quenya_11 (EB), Rollins_9 (EB), Rona_10 (EB), SansAfet_10 (EB), Sharkboy_10 (EB), Skylord_9 (EB), Softsoap_10 (EB), Squircle_10 (EB), TukTuk_10 (EB), Vitas_9 (EB),

Start 56:

- Found in 4 of 421 (1.0%) of genes in pham
- Manual Annotations of this start: 4 of 350
- Called 100.0% of time when present
- Phage (with cluster) where this start called: DS6A_14 (singleton), Gaia_8 (X), LilSpotty_10 (singleton), Nebkiss_8 (X),

Start 57:

- Found in 54 of 421 (12.8%) of genes in pham
- Manual Annotations of this start: 24 of 350
- Called 79.6% of time when present
- Phage (with cluster) where this start called: Abidatro_11 (AS1), AmiCi24_10 (AS3), Andrew_11 (AS3), Antrice_11 (AS2), Atlantica_10 (AS3), AvGardian_10 (EB), BaileyBlu_10 (FP), Basilisk_11 (AS1), Bibble12_12 (AS2), Brynnie_11 (AS1), CallinAllBarbz_10 (FP), Camara_10 (AS3), Chickaboom_10 (AS1), Colusalem_11 (AS2), Eesa_11 (AS1), Galaxy_11 (AS1), Glotell_10 (AS3), Gravel_12 (AS1), HamCheese_10 (AS3), Icarian_11 (EB), Jamun_11 (AS1), Jankie_12 (FP), Jerole_12 (AS2), Juno112_10 (AS3), KHumphrey_10 (AS3), KendraB23_12 (AS1), Leona_10 (AS3), LittleTokyo_11 (AS2), Orcanus_11 (AS1), Pelletreau_12 (AS1), PhluffyCoco_10 (AS3), Rattail_10 (AS3), RedFox_10 (AS3), Renna12_11 (AS3), Ruchi_11 (AS1), Sleepyhead_11 (singleton), StuartMinion_10 (AS3), TaylorSipht_11 (AS1), Toad24_12 (AS1), Vulpecula_11 (AS1), WalkingDead_10 (EB), Westrich_12 (AS1), Zhuangyuan_13 (AS2),

Start 58:

- Found in 18 of 421 (4.3%) of genes in pham
- Manual Annotations of this start: 13 of 350
- Called 100.0% of time when present

- Phage (with cluster) where this start called: AnnabelLee_12 (FR), Apricot_11 (DN3), Audell_15 (FR), AuntGwenStacy_17 (Y), BearBQ_11 (DN), Bipper_17 (Y), Birdsong_11 (DN), Cracklewink_17 (Y), Crater_11 (DN3), Elva_11 (EB), Hilltopfarm_17 (Y), Kuwabara_11 (DN4), Lucky10_10 (DH), Morkie_10 (DH), MortyNRick_11 (DN), PhorbesPhlower_10 (DH), TMaxx_12 (FR), Typha_17 (Y),

Start 59:

- Found in 57 of 421 (13.5%) of genes in pham
- Manual Annotations of this start: 3 of 350
- Called 5.3% of time when present
- Phage (with cluster) where this start called: Ecliptus_11 (DN), Juicebox_12 (singleton), ODay_11 (DN),

Start 60:

- Found in 4 of 421 (1.0%) of genes in pham
- Manual Annotations of this start: 1 of 350
- Called 25.0% of time when present
- Phage (with cluster) where this start called: Shambre1_11 (singleton),

Start 68:

- Found in 22 of 421 (5.2%) of genes in pham
- Manual Annotations of this start: 19 of 350
- Called 100.0% of time when present
- Phage (with cluster) where this start called: Asapag_11 (DN1), BENtherdunthat_11 (DN1), BotCity_11 (DN), Budski_11 (DN), CheeseTouch_11 (DN1), Frickyeah_11 (DN1), Getalong_11 (DN1), Holliday_11 (DN1), Horus_11 (DN1), Kamaru_11 (DN1), Kenna_11 (DN1), Leroy_11 (DN1), LitninMcQueen_11 (DN1), Lutum_11 (DN1), Malisha_11 (DN), Periwinkle_11 (DN1), Phabuloso_11 (DN1), Phistory_11 (DN1), ShawBrad_11 (DN1), Spooky_11 (DN2), Squiddly_12 (DN2), Whitney_11 (DN1),

Start 70:

- Found in 166 of 421 (39.4%) of genes in pham
- No Manual Annotations of this start.
- Called 1.2% of time when present
- Phage (with cluster) where this start called: CanesSauce_11 (CT), ChocoMunchkin_11 (CT),

Summary by clusters:

There are 24 clusters represented in this pham: DN, FP, FR, DH, AS2, CY1, BU, DP, DN4, DN1, DN3, DN2, AS3, CY2, AS1, F, AK, EB, CY, Y, X, singleton, CT, F2,

Info for manual annotations of cluster AK:

- Start number 53 was manually annotated 83 times for cluster AK.

Info for manual annotations of cluster AS1:

- Start number 57 was manually annotated 11 times for cluster AS1.

Info for manual annotations of cluster AS2:

- Start number 46 was manually annotated 1 time for cluster AS2.
- Start number 50 was manually annotated 6 times for cluster AS2.
- Start number 52 was manually annotated 3 times for cluster AS2.
- Start number 57 was manually annotated 1 time for cluster AS2.

Info for manual annotations of cluster AS3:

- Start number 57 was manually annotated 7 times for cluster AS3.

Info for manual annotations of cluster BU:

- Start number 53 was manually annotated 43 times for cluster BU.

Info for manual annotations of cluster CT:

- Start number 42 was manually annotated 1 time for cluster CT.
- Start number 51 was manually annotated 53 times for cluster CT.

Info for manual annotations of cluster CY:

- Start number 54 was manually annotated 7 times for cluster CY.

Info for manual annotations of cluster CY1:

- Start number 54 was manually annotated 9 times for cluster CY1.

Info for manual annotations of cluster CY2:

- Start number 54 was manually annotated 1 time for cluster CY2.

Info for manual annotations of cluster DH:

- Start number 58 was manually annotated 3 times for cluster DH.

Info for manual annotations of cluster DN:

- Start number 58 was manually annotated 2 times for cluster DN.
- Start number 59 was manually annotated 2 times for cluster DN.
- Start number 68 was manually annotated 2 times for cluster DN.

Info for manual annotations of cluster DN1:

- Start number 68 was manually annotated 15 times for cluster DN1.

Info for manual annotations of cluster DN2:

- Start number 68 was manually annotated 2 times for cluster DN2.

Info for manual annotations of cluster DN3:

- Start number 58 was manually annotated 2 times for cluster DN3.

Info for manual annotations of cluster DN4:

- Start number 58 was manually annotated 1 time for cluster DN4.

Info for manual annotations of cluster DP:

- Start number 47 was manually annotated 6 times for cluster DP.

Info for manual annotations of cluster EB:

- Start number 48 was manually annotated 2 times for cluster EB.
- Start number 52 was manually annotated 16 times for cluster EB.
- Start number 55 was manually annotated 47 times for cluster EB.
- Start number 57 was manually annotated 2 times for cluster EB.
- Start number 58 was manually annotated 1 time for cluster EB.

Info for manual annotations of cluster F2:

- Start number 54 was manually annotated 7 times for cluster F2.

Info for manual annotations of cluster FP:

- Start number 57 was manually annotated 2 times for cluster FP.

Info for manual annotations of cluster X:

- Start number 56 was manually annotated 2 times for cluster X.

Info for manual annotations of cluster Y:

- Start number 58 was manually annotated 4 times for cluster Y.

Gene Information:

Gene: ATCC29399BC_9 Start: 6452, Stop: 6742, Start Num: 53

Candidate Starts for ATCC29399BC_9:

(Start: 53 @6452 has 127 MA's), (Start: 59 @6464 has 3 MA's), (62, 6470), (65, 6482), (69, 6500), (70, 6503), (74, 6518), (78, 6527), (79, 6530), (91, 6575), (103, 6617), (109, 6629), (123, 6713),

Gene: ATCC29399BT_9 Start: 6448, Stop: 6738, Start Num: 53

Candidate Starts for ATCC29399BT_9:

(49, 6442), (Start: 53 @6448 has 127 MA's), (62, 6466), (69, 6496), (74, 6514), (78, 6523), (79, 6526), (86, 6547), (103, 6613), (109, 6625), (112, 6649), (123, 6709),

Gene: Abidatro_11 Start: 8071, Stop: 8328, Start Num: 57

Candidate Starts for Abidatro_11:

(44, 8053), (Start: 57 @8071 has 24 MA's), (94, 8185), (113, 8239), (114, 8242),

Gene: Abigail_10 Start: 7773, Stop: 8030, Start Num: 55

Candidate Starts for Abigail_10:

(Start: 46 @7761 has 1 MA's), (Start: 55 @7773 has 47 MA's), (70, 7794), (115, 7950), (123, 8001),

Gene: Agatha_11 Start: 7257, Stop: 7538, Start Num: 51

Candidate Starts for Agatha_11:

(Start: 51 @7257 has 53 MA's),

Gene: AikoCarson_10 Start: 6987, Stop: 7256, Start Num: 51

Candidate Starts for AikoCarson_10:

(Start: 51 @6987 has 53 MA's),

Gene: Akino08_18 Start: 7908, Stop: 8216, Start Num: 36

Candidate Starts for Akino08_18:

(32, 7896), (36, 7908), (84, 8022), (115, 8136),

Gene: Albanese_13 Start: 10184, Stop: 10474, Start Num: 53

Candidate Starts for Albanese_13:

(Start: 53 @10184 has 127 MA's), (64, 10208), (86, 10283), (88, 10292), (92, 10310), (115, 10391),

Gene: Albedo_10 Start: 7645, Stop: 7905, Start Num: 55

Candidate Starts for Albedo_10:

(Start: 46 @7633 has 1 MA's), (Start: 55 @7645 has 47 MA's), (70, 7669), (115, 7825), (118, 7840), (123, 7876),

Gene: Albright_10 Start: 7654, Stop: 7911, Start Num: 55

Candidate Starts for Albright_10:

(Start: 46 @7642 has 1 MA's), (Start: 55 @7654 has 47 MA's), (70, 7675), (115, 7831), (123, 7882),

Gene: Aledel_9 Start: 7261, Stop: 7548, Start Num: 53

Candidate Starts for Aledel_9:

(Start: 53 @7261 has 127 MA's), (86, 7360), (115, 7468), (128, 7540),

Gene: Amelia_12 Start: 8244, Stop: 8504, Start Num: 52

Candidate Starts for Amelia_12:

(Start: 46 @8235 has 1 MA's), (Start: 50 @8241 has 6 MA's), (Start: 52 @8244 has 19 MA's), (Start: 57 @8250 has 24 MA's), (69, 8274), (84, 8319), (106, 8382), (110, 8394),

Gene: AmiCi24_10 Start: 7655, Stop: 7909, Start Num: 57

Candidate Starts for AmiCi24_10:

(11, 7397), (15, 7421), (17, 7457), (23, 7505), (41, 7619), (Start: 57 @7655 has 24 MA's), (69, 7679), (85, 7727), (87, 7736), (100, 7781), (110, 7799), (115, 7826),

Gene: Amok_10 Start: 6987, Stop: 7256, Start Num: 51

Candidate Starts for Amok_10:

(Start: 51 @6987 has 53 MA's),

Gene: AndPeggy_10 Start: 7275, Stop: 7547, Start Num: 51

Candidate Starts for AndPeggy_10:

(Start: 51 @7275 has 53 MA's),

Gene: Andrew_11 Start: 8034, Stop: 8288, Start Num: 57

Candidate Starts for Andrew_11:

(5, 7596), (8, 7704), (20, 7854), (24, 7905), (27, 7923), (41, 7998), (Start: 57 @8034 has 24 MA's), (69, 8058), (85, 8106), (100, 8160), (106, 8166), (110, 8178), (115, 8205),

Gene: Angelique_12 Start: 8007, Stop: 8264, Start Num: 54

Candidate Starts for Angelique_12:

(Start: 54 @8007 has 24 MA's), (76, 8088), (126, 8256),

Gene: AnnaLie_11 Start: 8000, Stop: 8320, Start Num: 55

Candidate Starts for AnnaLie_11:

(Start: 46 @7988 has 1 MA's), (Start: 55 @8000 has 47 MA's), (70, 8084), (114, 8237),

Gene: AnnabelLee_12 Start: 7464, Stop: 7730, Start Num: 58

Candidate Starts for AnnabelLee_12:

(Start: 58 @7464 has 13 MA's), (115, 7650), (116, 7653), (125, 7710),

Gene: Antrice_11 Start: 7990, Stop: 8244, Start Num: 57

Candidate Starts for Antrice_11:

(41, 7954), (Start: 57 @7990 has 24 MA's), (69, 8014), (106, 8122), (113, 8155), (115, 8161),

Gene: AppleCider_13 Start: 10140, Stop: 10409, Start Num: 53

Candidate Starts for AppleCider_13:

(45, 10128), (Start: 53 @10140 has 127 MA's), (62, 10158), (79, 10218), (86, 10239), (115, 10326),

Gene: Apricot_11 Start: 7129, Stop: 7386, Start Num: 58

Candidate Starts for Apricot_11:

(Start: 42 @7096 has 1 MA's), (Start: 58 @7129 has 13 MA's), (89, 7222), (95, 7243), (115, 7315), (116, 7318), (119, 7339), (124, 7369),

Gene: Aquarius_9 Start: 6442, Stop: 6732, Start Num: 53

Candidate Starts for Aquarius_9:

(Start: 53 @6442 has 127 MA's), (Start: 59 @6454 has 3 MA's), (62, 6460), (65, 6472), (69, 6490), (70, 6493), (74, 6508), (78, 6517), (79, 6520), (91, 6565), (103, 6607), (109, 6619),

Gene: Armstrong_9 Start: 7425, Stop: 7688, Start Num: 55

Candidate Starts for Armstrong_9:

(35, 7368), (Start: 55 @7425 has 47 MA's), (62, 7440), (70, 7455), (107, 7572), (119, 7632), (124, 7662),

Gene: Arroyo_11 Start: 8124, Stop: 8381, Start Num: 55

Candidate Starts for Arroyo_11:

(Start: 46 @8112 has 1 MA's), (Start: 55 @8124 has 47 MA's), (70, 8145), (114, 8298), (115, 8301), (118, 8316), (123, 8352),

Gene: Asapag_11 Start: 6824, Stop: 7048, Start Num: 68

Candidate Starts for Asapag_11:

(18, 6587), (19, 6602), (28, 6686), (49, 6782), (Start: 68 @6824 has 19 MA's), (85, 6863), (89, 6881), (109, 6938), (110, 6944), (115, 6971), (126, 7034),

Gene: Atlantica_10 Start: 7655, Stop: 7909, Start Num: 57

Candidate Starts for Atlantica_10:

(11, 7397), (15, 7421), (17, 7457), (23, 7505), (41, 7619), (Start: 57 @7655 has 24 MA's), (69, 7679), (85, 7727), (87, 7736), (100, 7781), (110, 7799), (115, 7826),

Gene: Attacne_9 Start: 6453, Stop: 6743, Start Num: 53

Candidate Starts for Attacne_9:

(Start: 53 @6453 has 127 MA's), (Start: 59 @6465 has 3 MA's), (62, 6471), (65, 6483), (69, 6501), (70, 6504), (74, 6519), (78, 6528), (79, 6531), (91, 6576), (109, 6630), (112, 6654),

Gene: Audell_15 Start: 10801, Stop: 11070, Start Num: 58

Candidate Starts for Audell_15:

(Start: 58 @10801 has 13 MA's), (115, 10990), (116, 10993),

Gene: AuntGwenStacy_17 Start: 11749, Stop: 11997, Start Num: 58

Candidate Starts for AuntGwenStacy_17:

(37, 11692), (Start: 58 @11749 has 13 MA's), (73, 11791), (99, 11866), (116, 11914), (124, 11965), (128, 11983),

Gene: AustinPowers_9 Start: 7262, Stop: 7549, Start Num: 53

Candidate Starts for AustinPowers_9:

(Start: 53 @7262 has 127 MA's), (86, 7361), (115, 7469),

Gene: AvGardian_10 Start: 7705, Stop: 7968, Start Num: 57

Candidate Starts for AvGardian_10:

(Start: 52 @7699 has 19 MA's), (Start: 57 @7705 has 24 MA's), (70, 7732),

Gene: Avani_12 Start: 6948, Stop: 7220, Start Num: 54

Candidate Starts for Avani_12:

(Start: 54 @6948 has 24 MA's), (69, 7008), (70, 7011), (81, 7041), (87, 7065), (97, 7095), (117, 7155),

Gene: Avocadoman_10 Start: 7712, Stop: 7969, Start Num: 55

Candidate Starts for Avocadoman_10:

(Start: 46 @7700 has 1 MA's), (Start: 55 @7712 has 47 MA's), (70, 7733), (115, 7889), (123, 7940),

Gene: Axym_11 Start: 7257, Stop: 7538, Start Num: 51

Candidate Starts for Axym_11:

(25, 7134), (Start: 51 @7257 has 53 MA's),

Gene: Azira_13 Start: 8163, Stop: 8462, Start Num: 51

Candidate Starts for Azira_13:

(49, 8160), (Start: 51 @8163 has 53 MA's), (81, 8265), (101, 8334), (115, 8376), (125, 8436), (126, 8439), (127, 8442),

Gene: BAjuniper_10 Start: 7595, Stop: 7852, Start Num: 52

Candidate Starts for BAjuniper_10:

(Start: 46 @7586 has 1 MA's), (Start: 52 @7595 has 19 MA's), (70, 7616), (114, 7769), (115, 7772), (122, 7817),

Gene: BENtherdunthat_11 Start: 6824, Stop: 7048, Start Num: 68

Candidate Starts for BENtherdunthat_11:

(18, 6587), (19, 6602), (28, 6686), (49, 6782), (Start: 68 @6824 has 19 MA's), (85, 6863), (89, 6881), (109, 6938), (110, 6944), (115, 6971), (126, 7034),

Gene: BabyDaisy_11 Start: 7870, Stop: 8133, Start Num: 52

Candidate Starts for BabyDaisy_11:

(Start: 46 @7861 has 1 MA's), (Start: 52 @7870 has 19 MA's),

Gene: BabyYoda_10 Start: 7899, Stop: 8162, Start Num: 52

Candidate Starts for BabyYoda_10:

(Start: 52 @7899 has 19 MA's), (Start: 60 @7911 has 1 MA's), (70, 7926), (107, 8043), (115, 8082), (118, 8097),

Gene: Bachaco_10 Start: 7786, Stop: 8049, Start Num: 55

Candidate Starts for Bachaco_10:

(Start: 46 @7774 has 1 MA's), (Start: 55 @7786 has 47 MA's), (70, 7813), (75, 7831), (107, 7930), (115, 7969),

Gene: BaileyBlu_10 Start: 6510, Stop: 6782, Start Num: 57

Candidate Starts for BaileyBlu_10:

(Start: 57 @6510 has 24 MA's), (63, 6525), (70, 6546), (78, 6570), (79, 6573), (82, 6579), (115, 6699),

Gene: Basilisk_11 Start: 8395, Stop: 8652, Start Num: 57

Candidate Starts for Basilisk_11:

(2, 7819), (5, 7933), (8, 8041), (9, 8086), (23, 8242), (Start: 57 @8395 has 24 MA's), (113, 8563),

Gene: Bavilard_11 Start: 7809, Stop: 8081, Start Num: 51

Candidate Starts for Bavilard_11:

(49, 7806), (Start: 51 @7809 has 53 MA's), (113, 7992), (115, 7998), (119, 8022),

Gene: BearBQ_11 Start: 7129, Stop: 7386, Start Num: 58

Candidate Starts for BearBQ_11:

(Start: 42 @7096 has 1 MA's), (Start: 58 @7129 has 13 MA's), (100, 7264), (113, 7309), (115, 7315), (116, 7318), (119, 7339),

Gene: Bedetta_12 Start: 8244, Stop: 8504, Start Num: 52

Candidate Starts for Bedetta_12:

(Start: 46 @8235 has 1 MA's), (Start: 50 @8241 has 6 MA's), (Start: 52 @8244 has 19 MA's), (Start: 57 @8250 has 24 MA's), (69, 8274), (84, 8319), (106, 8382), (110, 8394),

Gene: BeeGee_12 Start: 8009, Stop: 8266, Start Num: 54

Candidate Starts for BeeGee_12:

(Start: 54 @8009 has 24 MA's), (119, 8219), (126, 8258),

Gene: Beethoven_13 Start: 10100, Stop: 10369, Start Num: 53

Candidate Starts for Beethoven_13:

(Start: 53 @10100 has 127 MA's), (70, 10151), (74, 10166), (86, 10199),

Gene: BelmontSKP_11 Start: 8000, Stop: 8320, Start Num: 55

Candidate Starts for BelmontSKP_11:

(Start: 46 @7988 has 1 MA's), (Start: 55 @8000 has 47 MA's), (70, 8084), (114, 8237),

Gene: Bengal_10 Start: 7654, Stop: 7911, Start Num: 55

Candidate Starts for Bengal_10:

(Start: 46 @7642 has 1 MA's), (Start: 55 @7654 has 47 MA's), (70, 7675), (115, 7831), (123, 7882),

Gene: Bennie_9 Start: 7245, Stop: 7514, Start Num: 53

Candidate Starts for Bennie_9:

(Start: 53 @7245 has 127 MA's), (62, 7263), (86, 7344), (104, 7389), (115, 7431),

Gene: Bernstein_9 Start: 7485, Stop: 7748, Start Num: 55

Candidate Starts for Bernstein_9:

(35, 7428), (Start: 55 @7485 has 47 MA's), (62, 7500), (70, 7515), (107, 7632), (119, 7692), (124, 7722),

Gene: Bible12_12 Start: 8253, Stop: 8507, Start Num: 57

Candidate Starts for Bible12_12:

(Start: 46 @8238 has 1 MA's), (Start: 50 @8244 has 6 MA's), (Start: 52 @8247 has 19 MA's), (Start: 57 @8253 has 24 MA's), (69, 8277), (84, 8322), (106, 8385), (110, 8397),

Gene: BigChungus_10 Start: 7054, Stop: 7326, Start Num: 51

Candidate Starts for BigChungus_10:

(49, 7051), (Start: 51 @7054 has 53 MA's), (113, 7237), (115, 7243), (119, 7267),

Gene: BigMack_9 Start: 7245, Stop: 7514, Start Num: 53

Candidate Starts for BigMack_9:

(Start: 53 @7245 has 127 MA's), (74, 7311), (86, 7344), (115, 7431), (128, 7503),

Gene: BillDoor_13 Start: 7240, Stop: 7512, Start Num: 51

Candidate Starts for BillDoor_13:

(Start: 51 @7240 has 53 MA's),

Gene: Bipper_17 Start: 11835, Stop: 12083, Start Num: 58

Candidate Starts for Bipper_17:

(37, 11778), (Start: 58 @11835 has 13 MA's), (93, 11934), (99, 11952), (100, 11955), (116, 12000),

Gene: Birdsong_11 Start: 7129, Stop: 7386, Start Num: 58

Candidate Starts for Birdsong_11:

(Start: 42 @7096 has 1 MA's), (Start: 58 @7129 has 13 MA's), (100, 7264), (113, 7309), (115, 7315), (116, 7318), (119, 7339),

Gene: Biskit_12 Start: 7241, Stop: 7519, Start Num: 51

Candidate Starts for Biskit_12:

(Start: 51 @7241 has 53 MA's), (70, 7310), (94, 7382),

Gene: Blarby_13 Start: 7472, Stop: 7744, Start Num: 54

Candidate Starts for Blarby_13:

(Start: 54 @7472 has 24 MA's), (69, 7532), (70, 7535), (81, 7565), (87, 7589), (97, 7619), (117, 7679),

Gene: Blondies_11 Start: 7236, Stop: 7505, Start Num: 51

Candidate Starts for Blondies_11:

(Start: 51 @7236 has 53 MA's), (70, 7296), (94, 7368),

Gene: Bodacious_9 Start: 7243, Stop: 7512, Start Num: 53

Candidate Starts for Bodacious_9:

(Start: 53 @7243 has 127 MA's), (79, 7321), (86, 7342), (115, 7429),

Gene: BotCity_11 Start: 6822, Stop: 7046, Start Num: 68

Candidate Starts for BotCity_11:

(18, 6585), (19, 6600), (28, 6684), (49, 6780), (Start: 68 @6822 has 19 MA's), (85, 6861), (89, 6879), (109, 6936), (110, 6942), (115, 6969), (126, 7032),

Gene: Bradissa_12 Start: 8013, Stop: 8270, Start Num: 54

Candidate Starts for Bradissa_12:

(Start: 54 @8013 has 24 MA's), (119, 8223), (126, 8262),

Gene: Brahms_9 Start: 7425, Stop: 7688, Start Num: 55

Candidate Starts for Brahms_9:

(35, 7368), (Start: 55 @7425 has 47 MA's), (62, 7440), (70, 7455), (107, 7572), (119, 7632), (124, 7662),

Gene: BritBrat_12 Start: 8015, Stop: 8272, Start Num: 54

Candidate Starts for BritBrat_12:

(Start: 54 @8015 has 24 MA's), (119, 8225), (126, 8264),

Gene: BrotherBLo_13 Start: 10107, Stop: 10376, Start Num: 53

Candidate Starts for BrotherBLo_13:

(Start: 53 @10107 has 127 MA's), (70, 10158), (74, 10173), (86, 10206),

Gene: BruceLethal_9 Start: 6441, Stop: 6731, Start Num: 53

Candidate Starts for BruceLethal_9:

(49, 6435), (Start: 53 @6441 has 127 MA's), (Start: 59 @6453 has 3 MA's), (62, 6459), (69, 6489), (70, 6492), (74, 6507), (78, 6516), (79, 6519), (86, 6540), (91, 6564), (103, 6606), (109, 6618), (112, 6642),

Gene: Brynnie_11 Start: 8207, Stop: 8464, Start Num: 57

Candidate Starts for Brynnie_11:

(2, 7631), (5, 7745), (8, 7853), (9, 7898), (23, 8054), (Start: 57 @8207 has 24 MA's), (88, 8297), (113, 8375),

Gene: BubbaBear_10 Start: 7645, Stop: 7905, Start Num: 55
Candidate Starts for BubbaBear_10:
(Start: 46 @7633 has 1 MA's), (Start: 55 @7645 has 47 MA's), (70, 7669), (115, 7825), (118, 7840),

Gene: Budski_11 Start: 6829, Stop: 7053, Start Num: 68
Candidate Starts for Budski_11:
(49, 6787), (Start: 68 @6829 has 19 MA's), (85, 6868), (89, 6886), (109, 6943), (110, 6949), (115, 6976), (126, 7039),

Gene: Buldak_10 Start: 7930, Stop: 8196, Start Num: 55
Candidate Starts for Buldak_10:
(Start: 46 @7918 has 1 MA's), (Start: 55 @7930 has 47 MA's), (84, 8002), (92, 8035), (107, 8077),

Gene: Burnsey_11 Start: 7258, Stop: 7539, Start Num: 51
Candidate Starts for Burnsey_11:
(Start: 51 @7258 has 53 MA's),

Gene: Burritobowl_10 Start: 7681, Stop: 7938, Start Num: 55
Candidate Starts for Burritobowl_10:
(Start: 46 @7669 has 1 MA's), (Start: 55 @7681 has 47 MA's), (70, 7702), (115, 7858), (123, 7909),

Gene: Button_12 Start: 7274, Stop: 7543, Start Num: 51
Candidate Starts for Button_12:
(Start: 51 @7274 has 53 MA's), (64, 7289), (69, 7331), (124, 7514),

Gene: Buttrmlkdreams_11 Start: 7235, Stop: 7504, Start Num: 51
Candidate Starts for Buttrmlkdreams_11:
(Start: 51 @7235 has 53 MA's), (70, 7295), (94, 7367),

Gene: CallieOMalley_13 Start: 10140, Stop: 10409, Start Num: 53
Candidate Starts for CallieOMalley_13:
(45, 10128), (Start: 53 @10140 has 127 MA's), (62, 10158), (79, 10218), (86, 10239), (115, 10326),

Gene: CallinAllBarbz_10 Start: 6520, Stop: 6792, Start Num: 57
Candidate Starts for CallinAllBarbz_10:
(Start: 57 @6520 has 24 MA's), (63, 6535), (105, 6667), (115, 6709),

Gene: Camara_10 Start: 7656, Stop: 7910, Start Num: 57
Candidate Starts for Camara_10:
(41, 7620), (Start: 57 @7656 has 24 MA's), (69, 7680), (84, 7725), (87, 7737), (100, 7782), (106, 7788), (110, 7800), (115, 7827),

Gene: CanesSauce_11 Start: 7339, Stop: 7548, Start Num: 70
Candidate Starts for CanesSauce_11:
(Start: 51 @7276 has 53 MA's), (70, 7339),

Gene: Canowicakte_13 Start: 10175, Stop: 10444, Start Num: 53
Candidate Starts for Canowicakte_13:
(45, 10163), (Start: 53 @10175 has 127 MA's), (62, 10193), (79, 10253), (86, 10274), (115, 10361),

Gene: Carpal_13 Start: 10107, Stop: 10376, Start Num: 53
Candidate Starts for Carpal_13:

(Start: 53 @10107 has 127 MA's), (70, 10158), (74, 10173), (86, 10206),

Gene: Carsonalex_12 Start: 7314, Stop: 7595, Start Num: 51

Candidate Starts for Carsonalex_12:

(25, 7191), (Start: 51 @7314 has 53 MA's),

Gene: Cashington_10 Start: 7671, Stop: 7928, Start Num: 55

Candidate Starts for Cashington_10:

(Start: 46 @7659 has 1 MA's), (Start: 55 @7671 has 47 MA's), (70, 7692), (115, 7848), (123, 7899),

Gene: Cashline_12 Start: 7862, Stop: 8119, Start Num: 54

Candidate Starts for Cashline_12:

(31, 7793), (Start: 54 @7862 has 24 MA's), (119, 8072), (126, 8111),

Gene: Celaena_10 Start: 7723, Stop: 7986, Start Num: 55

Candidate Starts for Celaena_10:

(Start: 46 @7711 has 1 MA's), (Start: 55 @7723 has 47 MA's), (70, 7750), (75, 7768), (107, 7867), (115, 7906),

Gene: Che9d_12 Start: 6957, Stop: 7229, Start Num: 54

Candidate Starts for Che9d_12:

(Start: 54 @6957 has 24 MA's), (69, 7017), (70, 7020), (81, 7050), (87, 7074), (97, 7104), (117, 7164),

Gene: CheeseTouch_11 Start: 6829, Stop: 7053, Start Num: 68

Candidate Starts for CheeseTouch_11:

(49, 6787), (Start: 68 @6829 has 19 MA's), (85, 6868), (89, 6886), (109, 6943), (110, 6949), (115, 6976), (126, 7039),

Gene: CherryonLim_12 Start: 7780, Stop: 8052, Start Num: 51

Candidate Starts for CherryonLim_12:

(Start: 51 @7780 has 53 MA's), (62, 7792), (64, 7798), (113, 7963), (115, 7969), (119, 7993),

Gene: ChewChew_9 Start: 7242, Stop: 7511, Start Num: 53

Candidate Starts for ChewChew_9:

(Start: 53 @7242 has 127 MA's), (80, 7323), (86, 7341), (104, 7386), (115, 7428),

Gene: Chickaboom_10 Start: 7752, Stop: 8009, Start Num: 57

Candidate Starts for Chickaboom_10:

(5, 7290), (8, 7398), (9, 7443), (23, 7599), (Start: 57 @7752 has 24 MA's), (113, 7920),

Gene: ChickenTender_13 Start: 7300, Stop: 7581, Start Num: 51

Candidate Starts for ChickenTender_13:

(25, 7177), (49, 7297), (Start: 51 @7300 has 53 MA's),

Gene: ChiliPepper_10 Start: 7882, Stop: 8139, Start Num: 55

Candidate Starts for ChiliPepper_10:

(Start: 55 @7882 has 47 MA's), (84, 7945), (115, 8059), (122, 8104),

Gene: ChocoMunchkin_11 Start: 7339, Stop: 7548, Start Num: 70

Candidate Starts for ChocoMunchkin_11:

(Start: 51 @7276 has 53 MA's), (70, 7339),

Gene: Cholula_13 Start: 10152, Stop: 10421, Start Num: 53

Candidate Starts for Cholula_13:
(Start: 53 @10152 has 127 MA's), (70, 10203), (74, 10218), (86, 10251),

Gene: Chridison_9 Start: 7262, Stop: 7549, Start Num: 53
Candidate Starts for Chridison_9:
(Start: 53 @7262 has 127 MA's), (86, 7361), (115, 7469),

Gene: Christian_9 Start: 7243, Stop: 7512, Start Num: 53
Candidate Starts for Christian_9:
(Start: 53 @7243 has 127 MA's), (79, 7321), (86, 7342), (115, 7429),

Gene: Clayda5_9 Start: 7425, Stop: 7688, Start Num: 55
Candidate Starts for Clayda5_9:
(35, 7368), (Start: 55 @7425 has 47 MA's), (62, 7440), (70, 7455), (107, 7572), (119, 7632), (124, 7662),

Gene: Cleo_11 Start: 7463, Stop: 7762, Start Num: 51
Candidate Starts for Cleo_11:
(Start: 51 @7463 has 53 MA's), (127, 7742),

Gene: CliffHanger_11 Start: 7626, Stop: 7886, Start Num: 52
Candidate Starts for CliffHanger_11:
(35, 7572), (Start: 46 @7617 has 1 MA's), (Start: 52 @7626 has 19 MA's), (108, 7773), (114, 7803),

Gene: Coltrane_9 Start: 7425, Stop: 7688, Start Num: 55
Candidate Starts for Coltrane_9:
(35, 7368), (Start: 55 @7425 has 47 MA's), (62, 7440), (70, 7455), (107, 7572), (119, 7632), (124, 7662),

Gene: Colusalem_11 Start: 8089, Stop: 8343, Start Num: 57
Candidate Starts for Colusalem_11:
(Start: 46 @8074 has 1 MA's), (Start: 50 @8080 has 6 MA's), (Start: 52 @8083 has 19 MA's), (Start: 57 @8089 has 24 MA's), (69, 8113), (84, 8158), (106, 8221), (110, 8233),

Gene: Confidence_12 Start: 8009, Stop: 8266, Start Num: 54
Candidate Starts for Confidence_12:
(Start: 54 @8009 has 24 MA's), (119, 8219), (126, 8258),

Gene: Coral_11 Start: 8080, Stop: 8343, Start Num: 50
Candidate Starts for Coral_11:
(Start: 46 @8074 has 1 MA's), (Start: 50 @8080 has 6 MA's), (Start: 52 @8083 has 19 MA's), (Start: 57 @8089 has 24 MA's), (69, 8113), (84, 8158), (106, 8221), (110, 8233),

Gene: Cota_9 Start: 6460, Stop: 6750, Start Num: 53
Candidate Starts for Cota_9:
(Start: 53 @6460 has 127 MA's), (Start: 59 @6472 has 3 MA's), (62, 6478), (65, 6490), (69, 6508), (70, 6511), (74, 6526), (78, 6535), (79, 6538), (86, 6559), (91, 6583), (103, 6625), (109, 6637), (111, 6652), (112, 6661),

Gene: Cote_12 Start: 8241, Stop: 8504, Start Num: 50
Candidate Starts for Cote_12:
(Start: 46 @8235 has 1 MA's), (Start: 50 @8241 has 6 MA's), (Start: 52 @8244 has 19 MA's), (Start: 57 @8250 has 24 MA's), (69, 8274), (84, 8319), (106, 8382), (110, 8394),

Gene: Cozz_11 Start: 7258, Stop: 7539, Start Num: 51

Candidate Starts for Cozz_11:

(25, 7135), (Start: 51 @7258 has 53 MA's),

Gene: Cracklewink_17 Start: 11835, Stop: 12083, Start Num: 58

Candidate Starts for Cracklewink_17:

(37, 11778), (Start: 58 @11835 has 13 MA's), (99, 11952), (100, 11955), (116, 12000),

Gene: Crater_11 Start: 7129, Stop: 7386, Start Num: 58

Candidate Starts for Crater_11:

(Start: 42 @7096 has 1 MA's), (Start: 58 @7129 has 13 MA's), (89, 7222), (95, 7243), (115, 7315), (116, 7318), (119, 7339), (124, 7369),

Gene: CristinaYang_9 Start: 7243, Stop: 7512, Start Num: 53

Candidate Starts for CristinaYang_9:

(Start: 53 @7243 has 127 MA's), (79, 7321), (86, 7342), (115, 7429),

Gene: CroZenni_10 Start: 7654, Stop: 7911, Start Num: 55

Candidate Starts for CroZenni_10:

(Start: 46 @7642 has 1 MA's), (Start: 55 @7654 has 47 MA's), (70, 7675), (114, 7828), (115, 7831), (118, 7846), (123, 7882),

Gene: CupcakePrincess_10 Start: 7631, Stop: 7951, Start Num: 55

Candidate Starts for CupcakePrincess_10:

(Start: 46 @7619 has 1 MA's), (Start: 55 @7631 has 47 MA's), (70, 7715), (115, 7871), (118, 7886),

Gene: DS6A_14 Start: 10056, Stop: 10361, Start Num: 56

Candidate Starts for DS6A_14:

(Start: 56 @10056 has 4 MA's), (64, 10074), (74, 10134), (77, 10143), (99, 10224), (119, 10302),

Gene: Daiboju_9 Start: 7263, Stop: 7550, Start Num: 53

Candidate Starts for Daiboju_9:

(Start: 53 @7263 has 127 MA's), (80, 7344), (86, 7362), (115, 7470), (128, 7542),

Gene: Daob_12 Start: 8238, Stop: 8507, Start Num: 46

Candidate Starts for Daob_12:

(Start: 46 @8238 has 1 MA's), (Start: 50 @8244 has 6 MA's), (Start: 52 @8247 has 19 MA's), (Start: 57 @8253 has 24 MA's), (69, 8277), (84, 8322), (106, 8385), (110, 8397),

Gene: Demsculpinboyz_12 Start: 6948, Stop: 7220, Start Num: 54

Candidate Starts for Demsculpinboyz_12:

(Start: 54 @6948 has 24 MA's), (69, 7008), (70, 7011), (81, 7041), (87, 7065), (97, 7095), (117, 7155),

Gene: DickRichards_10 Start: 8148, Stop: 8405, Start Num: 55

Candidate Starts for DickRichards_10:

(Start: 46 @8136 has 1 MA's), (Start: 55 @8148 has 47 MA's), (70, 8169), (114, 8322), (115, 8325), (118, 8340), (123, 8376),

Gene: Didgeridoo_11 Start: 7870, Stop: 8133, Start Num: 52

Candidate Starts for Didgeridoo_11:

(Start: 46 @7861 has 1 MA's), (Start: 52 @7870 has 19 MA's),

Gene: Dino_13 Start: 10106, Stop: 10375, Start Num: 53
Candidate Starts for Dino_13:
(Start: 53 @10106 has 127 MA's), (70, 10157), (74, 10172), (86, 10205),

Gene: DirtyBubble_10 Start: 7907, Stop: 8170, Start Num: 52
Candidate Starts for DirtyBubble_10:
(Start: 52 @7907 has 19 MA's), (Start: 60 @7919 has 1 MA's), (70, 7934), (107, 8051), (115, 8090),
(118, 8105),

Gene: Dismas_10 Start: 7882, Stop: 8139, Start Num: 55
Candidate Starts for Dismas_10:
(Start: 55 @7882 has 47 MA's), (84, 7945), (115, 8059), (122, 8104),

Gene: Doobus_10 Start: 7885, Stop: 8142, Start Num: 55
Candidate Starts for Doobus_10:
(Start: 46 @7873 has 1 MA's), (Start: 55 @7885 has 47 MA's), (70, 7906), (115, 8062), (123, 8113),

Gene: DrParker_9 Start: 6467, Stop: 6757, Start Num: 53
Candidate Starts for DrParker_9:
(Start: 53 @6467 has 127 MA's), (Start: 59 @6479 has 3 MA's), (62, 6485), (65, 6497), (69, 6515), (70,
6518), (74, 6533), (78, 6542), (79, 6545), (86, 6566), (91, 6590), (103, 6632), (109, 6644), (112, 6668),
(123, 6728),

Gene: DrRobert_9 Start: 7243, Stop: 7512, Start Num: 53
Candidate Starts for DrRobert_9:
(Start: 53 @7243 has 127 MA's), (86, 7342), (115, 7429),

Gene: Dre3_11 Start: 7410, Stop: 7709, Start Num: 51
Candidate Starts for Dre3_11:
(Start: 51 @7410 has 53 MA's), (127, 7689),

Gene: DreamTeam_9 Start: 7289, Stop: 7579, Start Num: 53
Candidate Starts for DreamTeam_9:
(Start: 53 @7289 has 127 MA's), (86, 7388), (96, 7427), (115, 7496),

Gene: EMSquaredA_12 Start: 8015, Stop: 8272, Start Num: 54
Candidate Starts for EMSquaredA_12:
(Start: 54 @8015 has 24 MA's), (119, 8225), (126, 8264),

Gene: Ecliptus_11 Start: 6857, Stop: 7114, Start Num: 59
Candidate Starts for Ecliptus_11:
(38, 6812), (Start: 59 @6857 has 3 MA's), (89, 6950), (95, 6971), (115, 7043), (116, 7046), (119, 7067),
(124, 7097),

Gene: Eden_9 Start: 7514, Stop: 7780, Start Num: 55
Candidate Starts for Eden_9:
(35, 7457), (Start: 55 @7514 has 47 MA's), (70, 7547), (87, 7601), (124, 7754),

Gene: Eesa_11 Start: 8248, Stop: 8502, Start Num: 57
Candidate Starts for Eesa_11:
(3, 7771), (8, 7915), (24, 8119), (41, 8212), (44, 8230), (Start: 57 @8248 has 24 MA's), (69, 8272),
(109, 8386), (110, 8392), (115, 8419),

Gene: Elinal_12 Start: 7035, Stop: 7307, Start Num: 51
Candidate Starts for Elinal_12:
(49, 7032), (Start: 51 @7035 has 53 MA's), (113, 7218), (115, 7224), (119, 7248),

Gene: Elliott_11 Start: 7257, Stop: 7538, Start Num: 51
Candidate Starts for Elliott_11:
(25, 7134), (Start: 51 @7257 has 53 MA's),

Gene: Elva_11 Start: 7965, Stop: 8225, Start Num: 58
Candidate Starts for Elva_11:
(Start: 58 @7965 has 13 MA's), (70, 7989), (110, 8118),

Gene: Emalyn_10 Start: 6986, Stop: 7255, Start Num: 51
Candidate Starts for Emalyn_10:
(Start: 51 @6986 has 53 MA's),

Gene: EnalisNailo_12 Start: 8015, Stop: 8272, Start Num: 54
Candidate Starts for EnalisNailo_12:
(Start: 54 @8015 has 24 MA's), (119, 8225), (126, 8264),

Gene: Enochoraptor_9 Start: 6463, Stop: 6753, Start Num: 53
Candidate Starts for Enochoraptor_9:
(Start: 53 @6463 has 127 MA's), (Start: 59 @6475 has 3 MA's), (62, 6481), (65, 6493), (69, 6511), (70, 6514), (74, 6529), (78, 6538), (79, 6541), (91, 6586), (103, 6628), (109, 6640),

Gene: Enoki_9 Start: 6448, Stop: 6738, Start Num: 53
Candidate Starts for Enoki_9:
(Start: 53 @6448 has 127 MA's), (Start: 59 @6460 has 3 MA's), (62, 6466), (65, 6478), (69, 6496), (70, 6499), (74, 6514), (78, 6523), (79, 6526), (91, 6571), (103, 6613), (109, 6625), (112, 6649),

Gene: EstebanJulior_9 Start: 7287, Stop: 7556, Start Num: 53
Candidate Starts for EstebanJulior_9:
(Start: 53 @7287 has 127 MA's), (86, 7386), (87, 7392), (115, 7473),

Gene: Eula_10 Start: 7652, Stop: 7912, Start Num: 55
Candidate Starts for Eula_10:
(Start: 46 @7640 has 1 MA's), (Start: 55 @7652 has 47 MA's), (70, 7676), (115, 7832), (118, 7847),

Gene: Eunoia_9 Start: 7261, Stop: 7548, Start Num: 53
Candidate Starts for Eunoia_9:
(Start: 53 @7261 has 127 MA's), (86, 7360), (115, 7468), (128, 7540),

Gene: Feastonyeet_10 Start: 7054, Stop: 7326, Start Num: 51
Candidate Starts for Feastonyeet_10:
(49, 7051), (Start: 51 @7054 has 53 MA's), (113, 7237), (115, 7243), (119, 7267),

Gene: Finalfrontier_11 Start: 8160, Stop: 8423, Start Num: 52
Candidate Starts for Finalfrontier_11:
(Start: 46 @8151 has 1 MA's), (Start: 52 @8160 has 19 MA's), (70, 8187), (115, 8343), (118, 8358),

Gene: FlameThrower_10 Start: 7611, Stop: 7874, Start Num: 55
Candidate Starts for FlameThrower_10:

(Start: 46 @7599 has 1 MA's), (Start: 55 @7611 has 47 MA's), (70, 7638), (75, 7656), (107, 7755), (115, 7794),

Gene: Floral_12 Start: 8015, Stop: 8272, Start Num: 54
Candidate Starts for Floral_12:
(Start: 54 @8015 has 24 MA's), (119, 8225), (126, 8264),

Gene: Fluke_13 Start: 10148, Stop: 10417, Start Num: 53
Candidate Starts for Fluke_13:
(Start: 53 @10148 has 127 MA's), (70, 10199), (74, 10214), (86, 10247), (115, 10334),

Gene: Franklin22_9 Start: 7495, Stop: 7761, Start Num: 55
Candidate Starts for Franklin22_9:
(Start: 55 @7495 has 47 MA's), (70, 7528), (115, 7681), (124, 7735),

Gene: Fribs8_12 Start: 7976, Stop: 8275, Start Num: 51
Candidate Starts for Fribs8_12:
(Start: 51 @7976 has 53 MA's), (81, 8078), (115, 8189), (125, 8249), (126, 8252), (127, 8255),

Gene: Frickyeah_11 Start: 6824, Stop: 7048, Start Num: 68
Candidate Starts for Frickyeah_11:
(18, 6587), (19, 6602), (28, 6686), (49, 6782), (Start: 68 @6824 has 19 MA's), (85, 6863), (89, 6881), (109, 6938), (110, 6944), (115, 6971), (126, 7034),

Gene: Fryberger_43 Start: 16293, Stop: 16577, Start Num: 47
Candidate Starts for Fryberger_43:
(43, 16287), (Start: 47 @16293 has 6 MA's), (66, 16350), (71, 16377), (102, 16458), (105, 16464),

Gene: GTE2_09 Start: 6936, Stop: 7208, Start Num: 51
Candidate Starts for GTE2_09:
(Start: 51 @6936 has 53 MA's), (70, 6999),

Gene: Gack_9 Start: 7565, Stop: 7828, Start Num: 55
Candidate Starts for Gack_9:
(35, 7508), (Start: 55 @7565 has 47 MA's), (70, 7595), (78, 7619), (115, 7748), (124, 7802),

Gene: Gaia_8 Start: 7366, Stop: 7629, Start Num: 56
Candidate Starts for Gaia_8:
(Start: 56 @7366 has 4 MA's), (77, 7450), (81, 7459), (87, 7483), (98, 7504), (99, 7507), (110, 7531), (119, 7582), (123, 7609),

Gene: Galaxy_11 Start: 8078, Stop: 8335, Start Num: 57
Candidate Starts for Galaxy_11:
(44, 8060), (Start: 57 @8078 has 24 MA's), (114, 8249),

Gene: Getalong_11 Start: 6824, Stop: 7048, Start Num: 68
Candidate Starts for Getalong_11:
(18, 6587), (19, 6602), (28, 6686), (Start: 68 @6824 has 19 MA's), (85, 6863), (89, 6881), (109, 6938), (110, 6944), (115, 6971), (126, 7034),

Gene: GiKK_14 Start: 7577, Stop: 7846, Start Num: 51
Candidate Starts for GiKK_14:
(Start: 51 @7577 has 53 MA's), (64, 7592), (69, 7634), (124, 7817),

Gene: Gibbous_11 Start: 7410, Stop: 7709, Start Num: 51

Candidate Starts for Gibbous_11:

(Start: 51 @7410 has 53 MA's), (127, 7689),

Gene: Gisselle_9 Start: 7289, Stop: 7579, Start Num: 53

Candidate Starts for Gisselle_9:

(Start: 53 @7289 has 127 MA's), (86, 7388), (96, 7427), (115, 7496),

Gene: Glenn_13 Start: 10158, Stop: 10427, Start Num: 53

Candidate Starts for Glenn_13:

(Start: 53 @10158 has 127 MA's), (70, 10209), (74, 10224), (86, 10257),

Gene: Glotell_10 Start: 7655, Stop: 7909, Start Num: 57

Candidate Starts for Glotell_10:

(11, 7397), (15, 7421), (17, 7457), (23, 7505), (41, 7619), (Start: 57 @7655 has 24 MA's), (69, 7679), (85, 7727), (87, 7736), (100, 7781), (106, 7787), (110, 7799), (115, 7826),

Gene: GoldHunter_12 Start: 7258, Stop: 7539, Start Num: 51

Candidate Starts for GoldHunter_12:

(Start: 51 @7258 has 53 MA's),

Gene: Gravel_12 Start: 8244, Stop: 8498, Start Num: 57

Candidate Starts for Gravel_12:

(24, 8115), (41, 8208), (44, 8226), (Start: 57 @8244 has 24 MA's), (69, 8268), (109, 8382), (110, 8388), (116, 8418),

Gene: GreenHearts_13 Start: 10230, Stop: 10520, Start Num: 53

Candidate Starts for GreenHearts_13:

(Start: 53 @10230 has 127 MA's), (64, 10254), (86, 10329), (88, 10338), (92, 10356), (115, 10437),

Gene: Greenhouse_13 Start: 10155, Stop: 10445, Start Num: 53

Candidate Starts for Greenhouse_13:

(Start: 53 @10155 has 127 MA's), (64, 10179), (74, 10221), (86, 10254), (88, 10263), (92, 10281), (115, 10362),

Gene: Guey18_48 Start: 17486, Stop: 17770, Start Num: 47

Candidate Starts for Guey18_48:

(43, 17480), (Start: 47 @17486 has 6 MA's), (66, 17543), (71, 17570), (102, 17651), (105, 17657),

Gene: HamCheese_10 Start: 7655, Stop: 7909, Start Num: 57

Candidate Starts for HamCheese_10:

(41, 7619), (Start: 57 @7655 has 24 MA's), (69, 7679), (84, 7724), (87, 7736), (100, 7781), (106, 7787), (110, 7799), (115, 7826),

Gene: HannahPhantana_12 Start: 8247, Stop: 8507, Start Num: 52

Candidate Starts for HannahPhantana_12:

(Start: 46 @8238 has 1 MA's), (Start: 50 @8244 has 6 MA's), (Start: 52 @8247 has 19 MA's), (Start: 57 @8253 has 24 MA's), (69, 8277), (84, 8322), (106, 8385), (110, 8397),

Gene: HeadNerd_9 Start: 7245, Stop: 7514, Start Num: 53

Candidate Starts for HeadNerd_9:

(Start: 53 @7245 has 127 MA's), (62, 7263), (86, 7344), (104, 7389), (115, 7431),

Gene: Herb_9 Start: 7263, Stop: 7550, Start Num: 53
Candidate Starts for Herb_9:
(Start: 53 @7263 has 127 MA's), (80, 7344), (86, 7362), (115, 7470), (128, 7542),

Gene: Hexbug_13 Start: 8263, Stop: 8532, Start Num: 51
Candidate Starts for Hexbug_13:
(Start: 51 @8263 has 53 MA's), (69, 8320),

Gene: Hilltopfarm_17 Start: 11779, Stop: 12027, Start Num: 58
Candidate Starts for Hilltopfarm_17:
(37, 11722), (Start: 58 @11779 has 13 MA's), (73, 11821), (99, 11896), (116, 11944), (124, 11995),
(128, 12013),

Gene: HippoPololi_13 Start: 8062, Stop: 8361, Start Num: 51
Candidate Starts for HippoPololi_13:
(Start: 51 @8062 has 53 MA's), (62, 8083), (119, 8299), (127, 8341),

Gene: Holliday_11 Start: 6829, Stop: 7053, Start Num: 68
Candidate Starts for Holliday_11:
(49, 6787), (Start: 68 @6829 has 19 MA's), (85, 6868), (89, 6886), (109, 6943), (110, 6949), (115,
6976), (126, 7039),

Gene: Horseradish_12 Start: 7139, Stop: 7417, Start Num: 51
Candidate Starts for Horseradish_12:
(Start: 51 @7139 has 53 MA's), (70, 7208), (94, 7280),

Gene: Horus_11 Start: 6824, Stop: 7048, Start Num: 68
Candidate Starts for Horus_11:
(18, 6587), (19, 6602), (28, 6686), (49, 6782), (Start: 68 @6824 has 19 MA's), (85, 6863), (89, 6881),
(109, 6938), (110, 6944), (115, 6971), (126, 7034),

Gene: Huckleberry_9 Start: 7245, Stop: 7514, Start Num: 53
Candidate Starts for Huckleberry_9:
(Start: 53 @7245 has 127 MA's), (62, 7263), (86, 7344), (104, 7389), (115, 7431),

Gene: HunterDalle_9 Start: 7261, Stop: 7548, Start Num: 53
Candidate Starts for HunterDalle_9:
(Start: 53 @7261 has 127 MA's), (86, 7360), (115, 7468),

Gene: Huntingdon_13 Start: 10141, Stop: 10431, Start Num: 53
Candidate Starts for Huntingdon_13:
(4, 9655), (7, 9742), (13, 9880), (Start: 53 @10141 has 127 MA's), (64, 10165), (86, 10240), (92,
10267), (115, 10348),

Gene: Icarian_11 Start: 7889, Stop: 8152, Start Num: 57
Candidate Starts for Icarian_11:
(Start: 57 @7889 has 24 MA's), (70, 7916), (115, 8072), (118, 8087),

Gene: Immaculata_13 Start: 10152, Stop: 10421, Start Num: 53
Candidate Starts for Immaculata_13:
(Start: 53 @10152 has 127 MA's), (70, 10203), (74, 10218), (86, 10251),

Gene: IndyLu_10 Start: 7694, Stop: 7957, Start Num: 52

Candidate Starts for IndyLu_10:

(Start: 46 @7685 has 1 MA's), (Start: 52 @7694 has 19 MA's),

Gene: Jabb_10 Start: 7631, Stop: 7951, Start Num: 55

Candidate Starts for Jabb_10:

(Start: 46 @7619 has 1 MA's), (Start: 55 @7631 has 47 MA's), (70, 7715), (115, 7871), (118, 7886),

Gene: Jabbawokkie_13 Start: 7471, Stop: 7743, Start Num: 54

Candidate Starts for Jabbawokkie_13:

(Start: 54 @7471 has 24 MA's), (69, 7531), (70, 7534), (81, 7564), (87, 7588), (97, 7618), (117, 7678),

Gene: Jablanski_12 Start: 7862, Stop: 8119, Start Num: 54

Candidate Starts for Jablanski_12:

(Start: 54 @7862 has 24 MA's), (119, 8072), (126, 8111),

Gene: Jamun_11 Start: 8419, Stop: 8676, Start Num: 57

Candidate Starts for Jamun_11:

(9, 8110), (23, 8266), (Start: 57 @8419 has 24 MA's), (113, 8587),

Gene: Jamzy_14 Start: 7587, Stop: 7856, Start Num: 51

Candidate Starts for Jamzy_14:

(Start: 51 @7587 has 53 MA's), (64, 7602), (69, 7644), (124, 7827),

Gene: Jankie_12 Start: 6521, Stop: 6793, Start Num: 57

Candidate Starts for Jankie_12:

(34, 6458), (Start: 57 @6521 has 24 MA's), (70, 6557), (84, 6599),

Gene: Jerole_12 Start: 8250, Stop: 8504, Start Num: 57

Candidate Starts for Jerole_12:

(Start: 46 @8235 has 1 MA's), (Start: 50 @8241 has 6 MA's), (Start: 52 @8244 has 19 MA's), (Start: 57 @8250 has 24 MA's), (69, 8274), (84, 8319), (106, 8382), (110, 8394),

Gene: Joann_13 Start: 10133, Stop: 10423, Start Num: 53

Candidate Starts for Joann_13:

(4, 9647), (6, 9689), (7, 9734), (Start: 53 @10133 has 127 MA's), (64, 10157), (86, 10232), (88, 10241), (92, 10259), (115, 10340),

Gene: Johnathan_10 Start: 7654, Stop: 7911, Start Num: 55

Candidate Starts for Johnathan_10:

(Start: 46 @7642 has 1 MA's), (Start: 55 @7654 has 47 MA's), (70, 7675), (115, 7831), (123, 7882),

Gene: Jovita_10 Start: 7753, Stop: 8013, Start Num: 55

Candidate Starts for Jovita_10:

(Start: 46 @7741 has 1 MA's), (Start: 55 @7753 has 47 MA's), (70, 7777), (115, 7933), (118, 7948),

Gene: Juicebox_12 Start: 8597, Stop: 8833, Start Num: 59

Candidate Starts for Juicebox_12:

(Start: 59 @8597 has 3 MA's), (65, 8615), (83, 8660), (115, 8753),

Gene: Jumboset_13 Start: 10101, Stop: 10370, Start Num: 53

Candidate Starts for Jumboset_13:

(Start: 53 @10101 has 127 MA's), (70, 10152), (74, 10167), (86, 10200),

Gene: Juno112_10 Start: 7656, Stop: 7910, Start Num: 57

Candidate Starts for Juno112_10:

(11, 7398), (15, 7422), (17, 7458), (23, 7506), (41, 7620), (Start: 57 @7656 has 24 MA's), (69, 7680), (85, 7728), (87, 7737), (100, 7782), (110, 7800), (115, 7827),

Gene: KHumphrey_10 Start: 7655, Stop: 7909, Start Num: 57

Candidate Starts for KHumphrey_10:

(11, 7397), (15, 7421), (17, 7457), (23, 7505), (41, 7619), (Start: 57 @7655 has 24 MA's), (69, 7679), (85, 7727), (87, 7736), (100, 7781), (106, 7787), (110, 7799), (115, 7826),

Gene: Kalizoi_13 Start: 10100, Stop: 10369, Start Num: 53

Candidate Starts for Kalizoi_13:

(Start: 53 @10100 has 127 MA's), (70, 10151), (74, 10166), (86, 10199),

Gene: Kamaru_11 Start: 6829, Stop: 7053, Start Num: 68

Candidate Starts for Kamaru_11:

(49, 6787), (Start: 68 @6829 has 19 MA's), (85, 6868), (89, 6886), (109, 6943), (110, 6949), (115, 6976), (126, 7039),

Gene: Kate33_10 Start: 7693, Stop: 7956, Start Num: 52

Candidate Starts for Kate33_10:

(Start: 46 @7684 has 1 MA's), (Start: 52 @7693 has 19 MA's),

Gene: Katzastrophic_10 Start: 7786, Stop: 8049, Start Num: 55

Candidate Starts for Katzastrophic_10:

(Start: 46 @7774 has 1 MA's), (Start: 55 @7786 has 47 MA's), (70, 7813), (75, 7831), (107, 7930), (115, 7969),

Gene: KayGee_11 Start: 7035, Stop: 7307, Start Num: 51

Candidate Starts for KayGee_11:

(49, 7032), (Start: 51 @7035 has 53 MA's), (113, 7218), (115, 7224), (119, 7248),

Gene: Keelan_41 Start: 16268, Stop: 16552, Start Num: 47

Candidate Starts for Keelan_41:

(Start: 47 @16268 has 6 MA's), (66, 16325), (71, 16352), (102, 16433), (105, 16439),

Gene: Keiki_9 Start: 6460, Stop: 6750, Start Num: 53

Candidate Starts for Keiki_9:

(Start: 53 @6460 has 127 MA's), (Start: 59 @6472 has 3 MA's), (62, 6478), (65, 6490), (69, 6508), (70, 6511), (74, 6526), (78, 6535), (79, 6538), (86, 6559), (91, 6583), (103, 6625), (109, 6637), (111, 6652), (112, 6661),

Gene: KendraB23_12 Start: 8245, Stop: 8499, Start Num: 57

Candidate Starts for KendraB23_12:

(24, 8116), (26, 8131), (44, 8227), (Start: 57 @8245 has 24 MA's), (69, 8269), (109, 8383), (110, 8389), (116, 8419),

Gene: Kenna_11 Start: 6824, Stop: 7048, Start Num: 68

Candidate Starts for Kenna_11:

(19, 6602), (28, 6686), (49, 6782), (Start: 68 @6824 has 19 MA's), (85, 6863), (89, 6881), (109, 6938), (110, 6944), (115, 6971),

Gene: Kenzers_10 Start: 7668, Stop: 7928, Start Num: 55
Candidate Starts for Kenzers_10:
(Start: 46 @7656 has 1 MA's), (Start: 55 @7668 has 47 MA's), (70, 7692), (115, 7848), (118, 7863),
(123, 7899),

Gene: Kepler_11 Start: 8079, Stop: 8342, Start Num: 50
Candidate Starts for Kepler_11:
(Start: 46 @8073 has 1 MA's), (Start: 50 @8079 has 6 MA's), (Start: 52 @8082 has 19 MA's), (Start: 57
@8088 has 24 MA's), (84, 8157), (106, 8220), (110, 8232),

Gene: Kieran_10 Start: 7885, Stop: 8142, Start Num: 55
Candidate Starts for Kieran_10:
(Start: 55 @7885 has 47 MA's), (84, 7948), (115, 8062), (122, 8107),

Gene: KingBob_9 Start: 7263, Stop: 7550, Start Num: 53
Candidate Starts for KingBob_9:
(Start: 53 @7263 has 127 MA's), (80, 7344), (86, 7362), (115, 7470), (128, 7542),

Gene: Kittykat_9 Start: 7286, Stop: 7555, Start Num: 53
Candidate Starts for Kittykat_9:
(Start: 53 @7286 has 127 MA's), (86, 7385), (104, 7430), (115, 7472), (120, 7499),

Gene: Korra_13 Start: 10106, Stop: 10375, Start Num: 53
Candidate Starts for Korra_13:
(Start: 53 @10106 has 127 MA's), (70, 10157), (74, 10172), (86, 10205),

Gene: Kubed_9 Start: 6450, Stop: 6740, Start Num: 53
Candidate Starts for Kubed_9:
(Start: 53 @6450 has 127 MA's), (Start: 59 @6462 has 3 MA's), (62, 6468), (65, 6480), (69, 6498), (70,
6501), (74, 6516), (78, 6525), (79, 6528), (91, 6573), (103, 6615), (109, 6627), (111, 6642), (112,
6651),

Gene: Kuleana_11 Start: 8039, Stop: 8302, Start Num: 50
Candidate Starts for Kuleana_11:
(Start: 46 @8033 has 1 MA's), (Start: 50 @8039 has 6 MA's), (Start: 57 @8048 has 24 MA's), (67,
8069), (69, 8072), (85, 8120), (106, 8180), (110, 8192), (115, 8219),

Gene: Kuwabara_11 Start: 7129, Stop: 7386, Start Num: 58
Candidate Starts for Kuwabara_11:
(Start: 42 @7096 has 1 MA's), (Start: 58 @7129 has 13 MA's), (89, 7222), (95, 7243), (115, 7315),
(116, 7318), (119, 7339), (124, 7369),

Gene: Lahqtemish_10 Start: 7738, Stop: 8001, Start Num: 52
Candidate Starts for Lahqtemish_10:
(Start: 46 @7729 has 1 MA's), (Start: 52 @7738 has 19 MA's), (84, 7807),

Gene: Lakshmi_13 Start: 10160, Stop: 10450, Start Num: 53
Candidate Starts for Lakshmi_13:
(Start: 53 @10160 has 127 MA's), (64, 10184), (86, 10259), (88, 10268), (92, 10286), (115, 10367),

Gene: Lasagna_9 Start: 7243, Stop: 7512, Start Num: 53
Candidate Starts for Lasagna_9:
(Start: 53 @7243 has 127 MA's), (79, 7321), (86, 7342), (115, 7429),

Gene: Lauchelly_9 Start: 6445, Stop: 6735, Start Num: 53

Candidate Starts for Lauchelly_9:

(Start: 53 @6445 has 127 MA's), (Start: 59 @6457 has 3 MA's), (62, 6463), (65, 6475), (69, 6493), (70, 6496), (74, 6511), (78, 6520), (79, 6523), (91, 6568), (103, 6610), (109, 6622), (112, 6646),

Gene: Lauer_10 Start: 7057, Stop: 7356, Start Num: 42

Candidate Starts for Lauer_10:

(12, 6820), (18, 6886), (21, 6907), (22, 6922), (25, 6961), (29, 7000), (30, 7015), (33, 7024), (Start: 42 @7057 has 1 MA's), (49, 7081), (Start: 51 @7084 has 53 MA's), (113, 7267), (115, 7273), (119, 7297),

Gene: Lennox_9 Start: 7243, Stop: 7512, Start Num: 53

Candidate Starts for Lennox_9:

(Start: 53 @7243 has 127 MA's), (86, 7342), (104, 7387), (115, 7429),

Gene: Leona_10 Start: 7706, Stop: 7960, Start Num: 57

Candidate Starts for Leona_10:

(11, 7448), (15, 7472), (17, 7508), (23, 7556), (40, 7664), (41, 7670), (Start: 57 @7706 has 24 MA's), (69, 7730), (85, 7778), (87, 7787), (100, 7832), (110, 7850), (115, 7877),

Gene: Leroy_11 Start: 6825, Stop: 7049, Start Num: 68

Candidate Starts for Leroy_11:

(18, 6588), (19, 6603), (28, 6687), (49, 6783), (Start: 68 @6825 has 19 MA's), (85, 6864), (89, 6882), (109, 6939), (110, 6945), (115, 6972), (126, 7035),

Gene: Leviosa_9 Start: 6466, Stop: 6756, Start Num: 53

Candidate Starts for Leviosa_9:

(Start: 53 @6466 has 127 MA's), (62, 6484), (65, 6496), (69, 6514), (70, 6517), (74, 6532), (78, 6541), (79, 6544), (86, 6565), (91, 6589), (103, 6631), (109, 6643), (112, 6667), (123, 6727),

Gene: LilBandit_9 Start: 6450, Stop: 6740, Start Num: 53

Candidate Starts for LilBandit_9:

(Start: 53 @6450 has 127 MA's), (Start: 59 @6462 has 3 MA's), (62, 6468), (65, 6480), (69, 6498), (70, 6501), (74, 6516), (78, 6525), (79, 6528), (86, 6549), (91, 6573), (103, 6615), (109, 6627),

Gene: LilSpotty_10 Start: 6830, Stop: 7105, Start Num: 56

Candidate Starts for LilSpotty_10:

(39, 6785), (Start: 56 @6830 has 4 MA's), (61, 6839), (99, 6968), (115, 7019), (119, 7043),

Gene: LilStuart_9 Start: 7243, Stop: 7512, Start Num: 53

Candidate Starts for LilStuart_9:

(Start: 53 @7243 has 127 MA's), (79, 7321), (86, 7342), (115, 7429),

Gene: Lilas_12 Start: 8015, Stop: 8272, Start Num: 54

Candidate Starts for Lilas_12:

(Start: 54 @8015 has 24 MA's), (119, 8225), (126, 8264),

Gene: LimaBean_10 Start: 7654, Stop: 7911, Start Num: 55

Candidate Starts for LimaBean_10:

(Start: 46 @7642 has 1 MA's), (Start: 55 @7654 has 47 MA's), (70, 7675), (115, 7831), (123, 7882),

Gene: LitninMcQueen_11 Start: 6829, Stop: 7053, Start Num: 68

Candidate Starts for LitninMcQueen_11:

(49, 6787), (Start: 68 @6829 has 19 MA's), (85, 6868), (89, 6886), (109, 6943), (110, 6949), (115, 6976), (126, 7039),

Gene: Litotes_13 Start: 10128, Stop: 10397, Start Num: 53

Candidate Starts for Litotes_13:

(45, 10116), (Start: 53 @10128 has 127 MA's), (62, 10146), (70, 10179), (86, 10227), (104, 10272), (115, 10314),

Gene: LittleTokyo_11 Start: 7988, Stop: 8242, Start Num: 57

Candidate Starts for LittleTokyo_11:

(Start: 57 @7988 has 24 MA's), (84, 8057), (113, 8153), (115, 8159),

Gene: LonelyBoi_12 Start: 7862, Stop: 8119, Start Num: 54

Candidate Starts for LonelyBoi_12:

(Start: 54 @7862 has 24 MA's), (119, 8072), (126, 8111),

Gene: Loviatar_18 Start: 7923, Stop: 8231, Start Num: 36

Candidate Starts for Loviatar_18:

(32, 7911), (36, 7923), (84, 8037), (115, 8151),

Gene: Lucky10_10 Start: 6338, Stop: 6595, Start Num: 58

Candidate Starts for Lucky10_10:

(Start: 42 @6305 has 1 MA's), (Start: 58 @6338 has 13 MA's), (115, 6524), (119, 6548),

Gene: Lucy_9 Start: 7234, Stop: 7503, Start Num: 53

Candidate Starts for Lucy_9:

(Start: 53 @7234 has 127 MA's), (62, 7252), (86, 7333), (104, 7378), (115, 7420),

Gene: Lunar_12 Start: 8244, Stop: 8504, Start Num: 52

Candidate Starts for Lunar_12:

(Start: 46 @8235 has 1 MA's), (Start: 50 @8241 has 6 MA's), (Start: 52 @8244 has 19 MA's), (Start: 57 @8250 has 24 MA's), (69, 8274), (84, 8319), (106, 8382), (110, 8394),

Gene: Lutum_11 Start: 6824, Stop: 7048, Start Num: 68

Candidate Starts for Lutum_11:

(19, 6602), (28, 6686), (49, 6782), (Start: 68 @6824 has 19 MA's), (85, 6863), (89, 6881), (109, 6938), (110, 6944), (115, 6971),

Gene: Lynlen_10 Start: 7668, Stop: 7928, Start Num: 55

Candidate Starts for Lynlen_10:

(Start: 46 @7656 has 1 MA's), (Start: 55 @7668 has 47 MA's), (70, 7692), (115, 7848), (118, 7863), (123, 7899),

Gene: MAnor_11 Start: 7025, Stop: 7297, Start Num: 51

Candidate Starts for MAnor_11:

(Start: 51 @7025 has 53 MA's), (62, 7037), (64, 7043), (113, 7208), (115, 7214), (119, 7238),

Gene: MEAK_9 Start: 6452, Stop: 6742, Start Num: 53

Candidate Starts for MEAK_9:

(Start: 53 @6452 has 127 MA's), (Start: 59 @6464 has 3 MA's), (62, 6470), (65, 6482), (69, 6500), (70, 6503), (74, 6518), (78, 6527), (79, 6530), (91, 6575), (103, 6617), (109, 6629), (112, 6653), (123, 6713),

Gene: MScarn_13 Start: 7235, Stop: 7504, Start Num: 51

Candidate Starts for MScarn_13:

(Start: 51 @7235 has 53 MA's), (70, 7295), (94, 7367),

Gene: MaVan_13 Start: 8163, Stop: 8462, Start Num: 51

Candidate Starts for MaVan_13:

(49, 8160), (Start: 51 @8163 has 53 MA's), (81, 8265), (101, 8334), (115, 8376), (125, 8436), (126, 8439), (127, 8442),

Gene: Makoto_9 Start: 7243, Stop: 7512, Start Num: 53

Candidate Starts for Makoto_9:

(Start: 53 @7243 has 127 MA's), (86, 7342), (104, 7387), (115, 7429),

Gene: Malisha_11 Start: 7874, Stop: 8098, Start Num: 68

Candidate Starts for Malisha_11:

(Start: 68 @7874 has 19 MA's), (89, 7931), (109, 7988), (110, 7994), (115, 8021), (126, 8084),

Gene: MamaPearl_9 Start: 7287, Stop: 7556, Start Num: 53

Candidate Starts for MamaPearl_9:

(Start: 53 @7287 has 127 MA's), (86, 7386), (87, 7392), (115, 7473),

Gene: Margaret_14 Start: 7972, Stop: 8241, Start Num: 51

Candidate Starts for Margaret_14:

(Start: 51 @7972 has 53 MA's), (64, 7987), (69, 8029),

Gene: Maria1952_9 Start: 7263, Stop: 7550, Start Num: 53

Candidate Starts for Maria1952_9:

(Start: 53 @7263 has 127 MA's), (80, 7344), (86, 7362), (115, 7470), (128, 7542),

Gene: Marteena_12 Start: 8015, Stop: 8272, Start Num: 54

Candidate Starts for Marteena_12:

(Start: 54 @8015 has 24 MA's), (119, 8225), (126, 8264),

Gene: Mayweather_12 Start: 7658, Stop: 7930, Start Num: 51

Candidate Starts for Mayweather_12:

(Start: 51 @7658 has 53 MA's), (62, 7670), (64, 7676), (113, 7841), (115, 7847), (119, 7871),

Gene: MeganNoll_13 Start: 10158, Stop: 10427, Start Num: 53

Candidate Starts for MeganNoll_13:

(Start: 53 @10158 has 127 MA's), (70, 10209), (74, 10224), (86, 10257),

Gene: Melons_12 Start: 8241, Stop: 8504, Start Num: 50

Candidate Starts for Melons_12:

(Start: 46 @8235 has 1 MA's), (Start: 50 @8241 has 6 MA's), (Start: 52 @8244 has 19 MA's), (Start: 57 @8250 has 24 MA's), (69, 8274), (84, 8319), (106, 8382), (110, 8394),

Gene: Misaeng_13 Start: 10206, Stop: 10496, Start Num: 53

Candidate Starts for Misaeng_13:

(13, 9945), (Start: 53 @10206 has 127 MA's), (64, 10230), (74, 10272), (86, 10305), (92, 10332), (115, 10413),

Gene: Moki_9 Start: 7245, Stop: 7514, Start Num: 53

Candidate Starts for Moki_9:

(Start: 53 @7245 has 127 MA's), (62, 7263), (86, 7344), (104, 7389), (115, 7431),

Gene: Morkie_10 Start: 6300, Stop: 6557, Start Num: 58

Candidate Starts for Morkie_10:

(Start: 42 @6267 has 1 MA's), (Start: 58 @6300 has 13 MA's), (115, 6486), (119, 6510),

Gene: MortyNRick_11 Start: 7129, Stop: 7386, Start Num: 58

Candidate Starts for MortyNRick_11:

(Start: 42 @7096 has 1 MA's), (Start: 58 @7129 has 13 MA's), (100, 7264), (113, 7309), (115, 7315), (116, 7318), (119, 7339),

Gene: Moyashi_9 Start: 6470, Stop: 6760, Start Num: 53

Candidate Starts for Moyashi_9:

(Start: 53 @6470 has 127 MA's), (Start: 59 @6482 has 3 MA's), (62, 6488), (69, 6518), (70, 6521), (74, 6536), (78, 6545), (79, 6548), (91, 6593), (109, 6647), (112, 6671),

Gene: MrAK_9 Start: 6479, Stop: 6769, Start Num: 53

Candidate Starts for MrAK_9:

(Start: 53 @6479 has 127 MA's), (Start: 59 @6491 has 3 MA's), (62, 6497), (65, 6509), (69, 6527), (70, 6530), (74, 6545), (78, 6554), (79, 6557), (91, 6602), (109, 6656), (112, 6680), (123, 6740),

Gene: MrGloopy_13 Start: 10091, Stop: 10360, Start Num: 53

Candidate Starts for MrGloopy_13:

(Start: 53 @10091 has 127 MA's), (70, 10142), (74, 10157), (86, 10190),

Gene: MsUbiquitous_10 Start: 7631, Stop: 7951, Start Num: 55

Candidate Starts for MsUbiquitous_10:

(Start: 46 @7619 has 1 MA's), (Start: 55 @7631 has 47 MA's), (70, 7715), (115, 7871), (118, 7886),

Gene: MunkgeeRoachy_11 Start: 7305, Stop: 7586, Start Num: 51

Candidate Starts for MunkgeeRoachy_11:

(25, 7182), (Start: 51 @7305 has 53 MA's),

Gene: Nancia_9 Start: 7243, Stop: 7512, Start Num: 53

Candidate Starts for Nancia_9:

(Start: 53 @7243 has 127 MA's), (79, 7321), (86, 7342), (115, 7429),

Gene: Nebkiss_8 Start: 7367, Stop: 7630, Start Num: 56

Candidate Starts for Nebkiss_8:

(Start: 56 @7367 has 4 MA's), (77, 7451), (81, 7460), (87, 7484), (98, 7505), (99, 7508), (110, 7532), (119, 7583), (123, 7610),

Gene: Nibbles_13 Start: 8163, Stop: 8462, Start Num: 51

Candidate Starts for Nibbles_13:

(49, 8160), (Start: 51 @8163 has 53 MA's), (81, 8265), (101, 8334), (115, 8376), (125, 8436), (126, 8439), (127, 8442),

Gene: Nicky22_11 Start: 8102, Stop: 8359, Start Num: 55

Candidate Starts for Nicky22_11:

(Start: 46 @8090 has 1 MA's), (Start: 55 @8102 has 47 MA's), (70, 8123), (115, 8279), (118, 8294), (123, 8330),

Gene: Nina_12 Start: 8291, Stop: 8572, Start Num: 51

Candidate Starts for Nina_12:
(25, 8168), (Start: 51 @8291 has 53 MA's),

Gene: Nodigi_13 Start: 8256, Stop: 8525, Start Num: 51
Candidate Starts for Nodigi_13:
(Start: 51 @8256 has 53 MA's), (69, 8313),

Gene: Nubia_13 Start: 10120, Stop: 10410, Start Num: 53
Candidate Starts for Nubia_13:
(45, 10108), (Start: 53 @10120 has 127 MA's), (64, 10144), (74, 10186), (86, 10219), (88, 10228), (92, 10246), (115, 10327),

Gene: ODay_11 Start: 6855, Stop: 7112, Start Num: 59
Candidate Starts for ODay_11:
(38, 6810), (Start: 59 @6855 has 3 MA's), (89, 6948), (95, 6969), (115, 7041), (116, 7044), (119, 7065), (124, 7095),

Gene: OMalley_9 Start: 7261, Stop: 7548, Start Num: 53
Candidate Starts for OMalley_9:
(Start: 53 @7261 has 127 MA's), (86, 7360), (115, 7468), (128, 7540),

Gene: Olliecat_10 Start: 7885, Stop: 8151, Start Num: 55
Candidate Starts for Olliecat_10:
(Start: 46 @7873 has 1 MA's), (Start: 55 @7885 has 47 MA's), (67, 7909), (92, 7990), (107, 8032), (115, 8068), (118, 8083),

Gene: Orcanus_11 Start: 8038, Stop: 8292, Start Num: 57
Candidate Starts for Orcanus_11:
(24, 7909), (26, 7924), (41, 8002), (44, 8020), (Start: 57 @8038 has 24 MA's), (69, 8062), (109, 8176), (110, 8182), (116, 8212),

Gene: Orla_13 Start: 8260, Stop: 8529, Start Num: 51
Candidate Starts for Orla_13:
(Start: 51 @8260 has 53 MA's), (69, 8317),

Gene: OurGirlNessie_9 Start: 7234, Stop: 7503, Start Num: 53
Candidate Starts for OurGirlNessie_9:
(Start: 53 @7234 has 127 MA's), (79, 7312), (86, 7333), (115, 7420),

Gene: Ouroboros_9 Start: 6453, Stop: 6743, Start Num: 53
Candidate Starts for Ouroboros_9:
(Start: 53 @6453 has 127 MA's), (Start: 59 @6465 has 3 MA's), (62, 6471), (65, 6483), (69, 6501), (70, 6504), (74, 6519), (78, 6528), (79, 6531), (86, 6552), (91, 6576), (103, 6618), (109, 6630), (112, 6654), (123, 6714),

Gene: Oxynfrius_13 Start: 10133, Stop: 10423, Start Num: 53
Candidate Starts for Oxynfrius_13:
(Start: 53 @10133 has 127 MA's), (64, 10157), (86, 10232), (88, 10241), (92, 10259), (115, 10340),

Gene: P1.1_9 Start: 6453, Stop: 6743, Start Num: 53
Candidate Starts for P1.1_9:
(Start: 53 @6453 has 127 MA's), (Start: 59 @6465 has 3 MA's), (62, 6471), (65, 6483), (69, 6501), (70, 6504), (74, 6519), (78, 6528), (79, 6531), (91, 6576), (109, 6630), (123, 6714),

Gene: P100.1_9 Start: 6443, Stop: 6733, Start Num: 53

Candidate Starts for P100.1_9:

(Start: 53 @6443 has 127 MA's), (Start: 59 @6455 has 3 MA's), (62, 6461), (65, 6473), (69, 6491), (70, 6494), (74, 6509), (78, 6518), (79, 6521), (86, 6542), (91, 6566), (103, 6608), (109, 6620), (112, 6644), (123, 6704),

Gene: P100A_9 Start: 6464, Stop: 6754, Start Num: 53

Candidate Starts for P100A_9:

(30, 6392), (49, 6458), (Start: 53 @6464 has 127 MA's), (Start: 59 @6476 has 3 MA's), (62, 6482), (65, 6494), (69, 6512), (70, 6515), (74, 6530), (78, 6539), (79, 6542), (86, 6563), (91, 6587), (103, 6629), (109, 6641), (112, 6665), (123, 6725),

Gene: P100D_9 Start: 6447, Stop: 6737, Start Num: 53

Candidate Starts for P100D_9:

(Start: 53 @6447 has 127 MA's), (Start: 59 @6459 has 3 MA's), (62, 6465), (65, 6477), (69, 6495), (70, 6498), (74, 6513), (78, 6522), (79, 6525), (91, 6570), (103, 6612), (109, 6624), (112, 6648),

Gene: P101A_9 Start: 6446, Stop: 6736, Start Num: 53

Candidate Starts for P101A_9:

(Start: 53 @6446 has 127 MA's), (Start: 59 @6458 has 3 MA's), (62, 6464), (65, 6476), (69, 6494), (70, 6497), (74, 6512), (78, 6521), (79, 6524), (86, 6545), (91, 6569), (103, 6611), (109, 6623), (112, 6647), (123, 6707),

Gene: P104A_9 Start: 6448, Stop: 6738, Start Num: 53

Candidate Starts for P104A_9:

(Start: 53 @6448 has 127 MA's), (Start: 59 @6460 has 3 MA's), (62, 6466), (65, 6478), (69, 6496), (70, 6499), (74, 6514), (78, 6523), (79, 6526), (91, 6571), (103, 6613), (109, 6625), (112, 6649), (123, 6709),

Gene: P104B_9 Start: 6452, Stop: 6742, Start Num: 53

Candidate Starts for P104B_9:

(Start: 53 @6452 has 127 MA's), (Start: 59 @6464 has 3 MA's), (62, 6470), (65, 6482), (69, 6500), (70, 6503), (74, 6518), (78, 6527), (79, 6530), (86, 6551), (91, 6575), (103, 6617), (109, 6629),

Gene: P105_9 Start: 6442, Stop: 6732, Start Num: 53

Candidate Starts for P105_9:

(Start: 53 @6442 has 127 MA's), (Start: 59 @6454 has 3 MA's), (62, 6460), (65, 6472), (69, 6490), (70, 6493), (74, 6508), (78, 6517), (79, 6520), (86, 6541), (91, 6565), (103, 6607), (109, 6619), (112, 6643), (123, 6703),

Gene: P106A_9 Start: 6470, Stop: 6760, Start Num: 53

Candidate Starts for P106A_9:

(Start: 53 @6470 has 127 MA's), (Start: 59 @6482 has 3 MA's), (62, 6488), (65, 6500), (69, 6518), (70, 6521), (74, 6536), (78, 6545), (79, 6548), (91, 6593), (123, 6731),

Gene: P106C_9 Start: 6470, Stop: 6760, Start Num: 53

Candidate Starts for P106C_9:

(Start: 53 @6470 has 127 MA's), (Start: 59 @6482 has 3 MA's), (62, 6488), (65, 6500), (69, 6518), (70, 6521), (74, 6536), (78, 6545), (79, 6548), (91, 6593), (123, 6731),

Gene: P106I_9 Start: 6470, Stop: 6760, Start Num: 53

Candidate Starts for P106I_9:

(Start: 53 @6470 has 127 MA's), (Start: 59 @6482 has 3 MA's), (62, 6488), (65, 6500), (69, 6518), (70, 6521), (74, 6536), (78, 6545), (79, 6548), (91, 6593), (123, 6731),

Gene: P106L_9 Start: 6470, Stop: 6760, Start Num: 53

Candidate Starts for P106L_9:

(Start: 53 @6470 has 127 MA's), (Start: 59 @6482 has 3 MA's), (62, 6488), (65, 6500), (69, 6518), (70, 6521), (74, 6536), (78, 6545), (79, 6548), (91, 6593), (123, 6731),

Gene: P106M_9 Start: 6470, Stop: 6760, Start Num: 53

Candidate Starts for P106M_9:

(Start: 53 @6470 has 127 MA's), (Start: 59 @6482 has 3 MA's), (62, 6488), (65, 6500), (69, 6518), (70, 6521), (74, 6536), (78, 6545), (79, 6548), (91, 6593), (123, 6731),

Gene: P107A_9 Start: 6456, Stop: 6746, Start Num: 53

Candidate Starts for P107A_9:

(Start: 53 @6456 has 127 MA's), (Start: 59 @6468 has 3 MA's), (62, 6474), (65, 6486), (69, 6504), (70, 6507), (74, 6522), (78, 6531), (79, 6534), (86, 6555), (91, 6579), (103, 6621), (107, 6627), (109, 6633), (112, 6657), (123, 6717),

Gene: P107C_9 Start: 6452, Stop: 6742, Start Num: 53

Candidate Starts for P107C_9:

(Start: 53 @6452 has 127 MA's), (Start: 59 @6464 has 3 MA's), (62, 6470), (65, 6482), (69, 6500), (70, 6503), (74, 6518), (78, 6527), (79, 6530), (91, 6575), (103, 6617), (109, 6629), (123, 6713),

Gene: P108C_9 Start: 6456, Stop: 6746, Start Num: 53

Candidate Starts for P108C_9:

(Start: 53 @6456 has 127 MA's), (Start: 59 @6468 has 3 MA's), (62, 6474), (65, 6486), (69, 6504), (70, 6507), (74, 6522), (78, 6531), (79, 6534), (91, 6579), (103, 6621), (109, 6633),

Gene: P14.4_9 Start: 6447, Stop: 6737, Start Num: 53

Candidate Starts for P14.4_9:

(Start: 53 @6447 has 127 MA's), (Start: 59 @6459 has 3 MA's), (62, 6465), (65, 6477), (69, 6495), (70, 6498), (74, 6513), (78, 6522), (79, 6525), (91, 6570), (103, 6612), (109, 6624),

Gene: P9.1_9 Start: 6445, Stop: 6735, Start Num: 53

Candidate Starts for P9.1_9:

(Start: 53 @6445 has 127 MA's), (Start: 59 @6457 has 3 MA's), (62, 6463), (65, 6475), (69, 6493), (70, 6496), (74, 6511), (78, 6520), (79, 6523), (91, 6568), (103, 6610), (109, 6622),

Gene: PA6_9 Start: 6455, Stop: 6745, Start Num: 53

Candidate Starts for PA6_9:

(Start: 53 @6455 has 127 MA's), (Start: 59 @6467 has 3 MA's), (62, 6473), (65, 6485), (69, 6503), (70, 6506), (74, 6521), (78, 6530), (79, 6533), (86, 6554), (103, 6620), (109, 6632), (111, 6647), (112, 6656), (123, 6716),

Gene: PAD20_9 Start: 6453, Stop: 6743, Start Num: 53

Candidate Starts for PAD20_9:

(Start: 53 @6453 has 127 MA's), (Start: 59 @6465 has 3 MA's), (62, 6471), (65, 6483), (69, 6501), (70, 6504), (74, 6519), (78, 6528), (79, 6531), (91, 6576), (103, 6618), (109, 6630), (123, 6714),

Gene: PAS50_9 Start: 6450, Stop: 6740, Start Num: 53

Candidate Starts for PAS50_9:

(Start: 53 @6450 has 127 MA's), (Start: 59 @6462 has 3 MA's), (62, 6468), (65, 6480), (69, 6498), (70, 6501), (74, 6516), (78, 6525), (79, 6528), (91, 6573), (103, 6615), (109, 6627), (112, 6651),

Gene: PHL010M04_09 Start: 6444, Stop: 6734, Start Num: 53

Candidate Starts for PHL010M04_09:

(49, 6438), (Start: 53 @6444 has 127 MA's), (Start: 59 @6456 has 3 MA's), (62, 6462), (65, 6474), (69, 6492), (70, 6495), (74, 6510), (78, 6519), (79, 6522), (91, 6567), (103, 6609), (109, 6621), (112, 6645), (123, 6705),

Gene: PHL037M02_09 Start: 6444, Stop: 6740, Start Num: 49

Candidate Starts for PHL037M02_09:

(49, 6444), (Start: 53 @6450 has 127 MA's), (Start: 59 @6462 has 3 MA's), (62, 6468), (69, 6498), (70, 6501), (74, 6516), (78, 6525), (79, 6528), (103, 6615), (109, 6627), (123, 6711),

Gene: PHL060L00_09 Start: 6443, Stop: 6733, Start Num: 53

Candidate Starts for PHL060L00_09:

(Start: 53 @6443 has 127 MA's), (Start: 59 @6455 has 3 MA's), (62, 6461), (65, 6473), (69, 6491), (70, 6494), (74, 6509), (78, 6518), (79, 6521), (91, 6566), (103, 6608), (109, 6620), (112, 6644),

Gene: PHL067M10_09 Start: 6447, Stop: 6737, Start Num: 53

Candidate Starts for PHL067M10_09:

(Start: 53 @6447 has 127 MA's), (Start: 59 @6459 has 3 MA's), (62, 6465), (65, 6477), (69, 6495), (70, 6498), (74, 6513), (78, 6522), (79, 6525), (91, 6570), (103, 6612), (109, 6624), (112, 6648),

Gene: PHL071N05_09 Start: 6449, Stop: 6739, Start Num: 53

Candidate Starts for PHL071N05_09:

(Start: 53 @6449 has 127 MA's), (Start: 59 @6461 has 3 MA's), (62, 6467), (65, 6479), (69, 6497), (70, 6500), (74, 6515), (78, 6524), (79, 6527), (91, 6572), (103, 6614), (109, 6626),

Gene: PHL111M01_09 Start: 6453, Stop: 6743, Start Num: 53

Candidate Starts for PHL111M01_09:

(Start: 53 @6453 has 127 MA's), (Start: 59 @6465 has 3 MA's), (62, 6471), (65, 6483), (69, 6501), (70, 6504), (74, 6519), (78, 6528), (79, 6531), (91, 6576), (103, 6618), (109, 6630),

Gene: PHL112N00_09 Start: 6453, Stop: 6743, Start Num: 53

Candidate Starts for PHL112N00_09:

(Start: 53 @6453 has 127 MA's), (Start: 59 @6465 has 3 MA's), (62, 6471), (65, 6483), (69, 6501), (70, 6504), (74, 6519), (78, 6528), (79, 6531), (91, 6576), (103, 6618), (109, 6630), (111, 6645), (112, 6654),

Gene: PHL113M01_09 Start: 6453, Stop: 6743, Start Num: 53

Candidate Starts for PHL113M01_09:

(Start: 53 @6453 has 127 MA's), (Start: 59 @6465 has 3 MA's), (62, 6471), (64, 6477), (65, 6483), (69, 6501), (70, 6504), (74, 6519), (78, 6528), (79, 6531), (91, 6576), (103, 6618), (109, 6630), (112, 6654), (123, 6714),

Gene: PHL114L00_09 Start: 6452, Stop: 6742, Start Num: 53

Candidate Starts for PHL114L00_09:

(Start: 53 @6452 has 127 MA's), (Start: 59 @6464 has 3 MA's), (62, 6470), (69, 6500), (74, 6518), (78, 6527), (79, 6530), (86, 6551), (91, 6575), (103, 6617), (109, 6629), (112, 6653), (123, 6713),

Gene: PartyCup_13 Start: 10175, Stop: 10444, Start Num: 53

Candidate Starts for PartyCup_13:

(45, 10163), (Start: 53 @10175 has 127 MA's), (62, 10193), (70, 10226), (86, 10274), (104, 10319), (115, 10361),

Gene: PastaFagioli_10 Start: 7726, Stop: 7989, Start Num: 52

Candidate Starts for PastaFagioli_10:

(Start: 46 @7717 has 1 MA's), (Start: 52 @7726 has 19 MA's), (84, 7795),

Gene: Pelletreau_12 Start: 8244, Stop: 8498, Start Num: 57

Candidate Starts for Pelletreau_12:

(24, 8115), (41, 8208), (44, 8226), (Start: 57 @8244 has 24 MA's), (69, 8268), (109, 8382), (110, 8388), (116, 8418),

Gene: Periwinkle_11 Start: 6824, Stop: 7048, Start Num: 68

Candidate Starts for Periwinkle_11:

(18, 6587), (19, 6602), (28, 6686), (49, 6782), (Start: 68 @6824 has 19 MA's), (85, 6863), (89, 6881), (109, 6938), (110, 6944), (115, 6971), (126, 7034),

Gene: Phabuloso_11 Start: 6829, Stop: 7053, Start Num: 68

Candidate Starts for Phabuloso_11:

(49, 6787), (Start: 68 @6829 has 19 MA's), (85, 6868), (89, 6886), (109, 6943), (110, 6949), (115, 6976), (126, 7039),

Gene: PhigPhack_10 Start: 7683, Stop: 7940, Start Num: 55

Candidate Starts for PhigPhack_10:

(Start: 46 @7671 has 1 MA's), (Start: 55 @7683 has 47 MA's), (70, 7704), (114, 7857), (115, 7860), (118, 7875), (123, 7911),

Gene: Phisb_10 Start: 7645, Stop: 7905, Start Num: 55

Candidate Starts for Phisb_10:

(Start: 46 @7633 has 1 MA's), (Start: 55 @7645 has 47 MA's), (70, 7669), (115, 7825), (118, 7840), (123, 7876),

Gene: Phistory_11 Start: 6813, Stop: 7037, Start Num: 68

Candidate Starts for Phistory_11:

(19, 6591), (28, 6675), (49, 6771), (Start: 68 @6813 has 19 MA's), (85, 6852), (89, 6870), (109, 6927), (110, 6933), (115, 6960), (126, 7023),

Gene: PhluffyCoco_10 Start: 7655, Stop: 7909, Start Num: 57

Candidate Starts for PhluffyCoco_10:

(41, 7619), (Start: 57 @7655 has 24 MA's), (69, 7679), (84, 7724), (87, 7736), (100, 7781), (106, 7787), (110, 7799), (115, 7826),

Gene: PhorbesPhlower_10 Start: 6300, Stop: 6557, Start Num: 58

Candidate Starts for PhorbesPhlower_10:

(Start: 42 @6267 has 1 MA's), (Start: 58 @6300 has 13 MA's), (115, 6486), (119, 6510),

Gene: PinkFriday_9 Start: 7264, Stop: 7551, Start Num: 53

Candidate Starts for PinkFriday_9:

(Start: 53 @7264 has 127 MA's), (70, 7315), (86, 7363), (115, 7471), (128, 7543),

Gene: Pirate_9 Start: 6445, Stop: 6735, Start Num: 53

Candidate Starts for Pirate_9:

(Start: 53 @6445 has 127 MA's), (Start: 59 @6457 has 3 MA's), (62, 6463), (65, 6475), (69, 6493), (70, 6496), (74, 6511), (78, 6520), (79, 6523), (91, 6568), (103, 6610), (109, 6622),

Gene: PitaDog_9 Start: 7234, Stop: 7503, Start Num: 53

Candidate Starts for PitaDog_9:

(Start: 53 @7234 has 127 MA's), (86, 7333), (104, 7378), (115, 7420),

Gene: Polka_11 Start: 8080, Stop: 8343, Start Num: 50

Candidate Starts for Polka_11:

(Start: 46 @8074 has 1 MA's), (Start: 50 @8080 has 6 MA's), (Start: 52 @8083 has 19 MA's), (Start: 57 @8089 has 24 MA's), (69, 8113), (84, 8158), (106, 8221), (110, 8233),

Gene: Pollux_12 Start: 8015, Stop: 8272, Start Num: 54

Candidate Starts for Pollux_12:

(Start: 54 @8015 has 24 MA's), (119, 8225), (126, 8264),

Gene: Pons_11 Start: 7037, Stop: 7309, Start Num: 51

Candidate Starts for Pons_11:

(Start: 51 @7037 has 53 MA's), (62, 7049), (64, 7055), (113, 7220), (115, 7226), (119, 7250),

Gene: Posh_12 Start: 8009, Stop: 8266, Start Num: 54

Candidate Starts for Posh_12:

(Start: 54 @8009 has 24 MA's), (119, 8219), (126, 8258),

Gene: PotPie_11 Start: 7888, Stop: 8160, Start Num: 51

Candidate Starts for PotPie_11:

(49, 7885), (Start: 51 @7888 has 53 MA's), (62, 7900), (64, 7906), (113, 8071), (115, 8077), (119, 8101),

Gene: Potatoes_13 Start: 10152, Stop: 10421, Start Num: 53

Candidate Starts for Potatoes_13:

(Start: 53 @10152 has 127 MA's), (70, 10203), (74, 10218), (86, 10251),

Gene: Preamble_9 Start: 7244, Stop: 7513, Start Num: 53

Candidate Starts for Preamble_9:

(Start: 53 @7244 has 127 MA's), (86, 7343), (104, 7388), (115, 7430), (120, 7457),

Gene: Procrass1_9 Start: 6452, Stop: 6742, Start Num: 53

Candidate Starts for Procrass1_9:

(Start: 53 @6452 has 127 MA's), (Start: 59 @6464 has 3 MA's), (62, 6470), (65, 6482), (69, 6500), (70, 6503), (74, 6518), (78, 6527), (79, 6530), (91, 6575), (103, 6617), (109, 6629), (112, 6653), (123, 6713),

Gene: PsychoKiller_11 Start: 7257, Stop: 7538, Start Num: 51

Candidate Starts for PsychoKiller_11:

(25, 7134), (Start: 51 @7257 has 53 MA's),

Gene: Pterodactyl_9 Start: 7235, Stop: 7504, Start Num: 53

Candidate Starts for Pterodactyl_9:

(Start: 53 @7235 has 127 MA's), (86, 7334), (104, 7379), (115, 7421),

Gene: Pumancara_9 Start: 7263, Stop: 7550, Start Num: 53

Candidate Starts for Pumancara_9:

(Start: 53 @7263 has 127 MA's), (70, 7314), (86, 7362), (115, 7470), (128, 7542),

Gene: Pytheas_12 Start: 7862, Stop: 8119, Start Num: 54

Candidate Starts for Pytheas_12:

(Start: 54 @7862 has 24 MA's), (119, 8072), (126, 8111),

Gene: QMacho_11 Start: 8135, Stop: 8395, Start Num: 55

Candidate Starts for QMacho_11:

(Start: 46 @8123 has 1 MA's), (Start: 55 @8135 has 47 MA's), (70, 8159), (115, 8315), (118, 8330),

Gene: Quasar_11 Start: 7872, Stop: 8147, Start Num: 51

Candidate Starts for Quasar_11:

(25, 7749), (Start: 51 @7872 has 53 MA's),

Gene: QueenBey_9 Start: 6446, Stop: 6736, Start Num: 53

Candidate Starts for QueenBey_9:

(Start: 53 @6446 has 127 MA's), (62, 6464), (65, 6476), (69, 6494), (70, 6497), (74, 6512), (78, 6521), (79, 6524), (91, 6569), (103, 6611), (109, 6623), (112, 6647), (123, 6707),

Gene: Quenya_11 Start: 7781, Stop: 8044, Start Num: 55

Candidate Starts for Quenya_11:

(35, 7724), (Start: 55 @7781 has 47 MA's), (70, 7808), (74, 7823), (115, 7964),

Gene: RAP15_13 Start: 10158, Stop: 10427, Start Num: 53

Candidate Starts for RAP15_13:

(Start: 53 @10158 has 127 MA's), (70, 10209), (74, 10224), (86, 10257),

Gene: RanchParmCat_14 Start: 7972, Stop: 8241, Start Num: 51

Candidate Starts for RanchParmCat_14:

(Start: 51 @7972 has 53 MA's), (64, 7987), (69, 8029),

Gene: Rattail_10 Start: 7706, Stop: 7960, Start Num: 57

Candidate Starts for Rattail_10:

(11, 7448), (15, 7472), (17, 7508), (23, 7556), (40, 7664), (41, 7670), (Start: 57 @7706 has 24 MA's), (69, 7730), (85, 7778), (87, 7787), (100, 7832), (110, 7850), (115, 7877),

Gene: RcigaStruga_13 Start: 10141, Stop: 10431, Start Num: 53

Candidate Starts for RcigaStruga_13:

(4, 9655), (7, 9742), (13, 9880), (Start: 53 @10141 has 127 MA's), (64, 10165), (86, 10240), (92, 10267), (115, 10348),

Gene: RedBaron_12 Start: 7302, Stop: 7583, Start Num: 51

Candidate Starts for RedBaron_12:

(25, 7179), (Start: 51 @7302 has 53 MA's),

Gene: RedFox_10 Start: 7655, Stop: 7909, Start Num: 57

Candidate Starts for RedFox_10:

(41, 7619), (Start: 57 @7655 has 24 MA's), (69, 7679), (84, 7724), (87, 7736), (100, 7781), (106, 7787), (110, 7799), (115, 7826),

Gene: Renna12_11 Start: 7855, Stop: 8109, Start Num: 57

Candidate Starts for Renna12_11:

(Start: 57 @7855 has 24 MA's), (69, 7879), (84, 7924), (87, 7936), (100, 7981), (106, 7987), (110, 7999), (115, 8026),

Gene: Rileysaurus_9 Start: 6441, Stop: 6731, Start Num: 53

Candidate Starts for Rileysaurus_9:

(Start: 53 @6441 has 127 MA's), (Start: 59 @6453 has 3 MA's), (62, 6459), (65, 6471), (69, 6489), (74, 6507), (78, 6516), (79, 6519), (91, 6564), (103, 6606), (109, 6618), (112, 6642),

Gene: Riovina_9 Start: 7261, Stop: 7548, Start Num: 53

Candidate Starts for Riovina_9:

(Start: 53 @7261 has 127 MA's), (86, 7360), (115, 7468), (128, 7540),

Gene: Riverdale_13 Start: 10089, Stop: 10358, Start Num: 53

Candidate Starts for Riverdale_13:

(Start: 53 @10089 has 127 MA's), (70, 10140), (74, 10155), (86, 10188),

Gene: Rollins_9 Start: 7485, Stop: 7748, Start Num: 55

Candidate Starts for Rollins_9:

(35, 7428), (Start: 55 @7485 has 47 MA's), (62, 7500), (70, 7515), (107, 7632), (119, 7692), (124, 7722),

Gene: Rona_10 Start: 7882, Stop: 8139, Start Num: 55

Candidate Starts for Rona_10:

(Start: 55 @7882 has 47 MA's), (84, 7945), (115, 8059), (122, 8104),

Gene: Ronaldo_46 Start: 17223, Stop: 17507, Start Num: 47

Candidate Starts for Ronaldo_46:

(43, 17217), (Start: 47 @17223 has 6 MA's), (66, 17280), (71, 17307), (102, 17388), (105, 17394),

Gene: Rozby_13 Start: 10089, Stop: 10358, Start Num: 53

Candidate Starts for Rozby_13:

(Start: 53 @10089 has 127 MA's), (70, 10140), (74, 10155), (86, 10188),

Gene: Ruchi_11 Start: 8341, Stop: 8598, Start Num: 57

Candidate Starts for Ruchi_11:

(5, 7879), (8, 7987), (9, 8032), (23, 8188), (Start: 57 @8341 has 24 MA's), (106, 8479), (113, 8509),

Gene: SKKY_9 Start: 6477, Stop: 6767, Start Num: 53

Candidate Starts for SKKY_9:

(Start: 53 @6477 has 127 MA's), (Start: 59 @6489 has 3 MA's), (62, 6495), (65, 6507), (69, 6525), (70, 6528), (74, 6543), (78, 6552), (79, 6555), (91, 6600),

Gene: SanaSana_11 Start: 7900, Stop: 8160, Start Num: 48

Candidate Starts for SanaSana_11:

(Start: 48 @7900 has 2 MA's), (84, 7966),

Gene: SansAfet_10 Start: 7665, Stop: 7922, Start Num: 55

Candidate Starts for SansAfet_10:

(Start: 46 @7653 has 1 MA's), (Start: 55 @7665 has 47 MA's), (70, 7686), (114, 7839), (115, 7842), (118, 7857), (123, 7893),

Gene: SarBear_10 Start: 7625, Stop: 7888, Start Num: 52

Candidate Starts for SarBear_10:

(Start: 46 @7616 has 1 MA's), (Start: 52 @7625 has 19 MA's), (70, 7652), (115, 7808), (118, 7823),

Gene: Savage2526_13 Start: 10152, Stop: 10421, Start Num: 53

Candidate Starts for Savage2526_13:

(Start: 53 @10152 has 127 MA's), (70, 10203), (74, 10218), (86, 10251),

Gene: Scuttle_13 Start: 10158, Stop: 10427, Start Num: 53

Candidate Starts for Scuttle_13:

(Start: 53 @10158 has 127 MA's), (70, 10209), (74, 10224), (86, 10257),

Gene: Sergei_9 Start: 7263, Stop: 7550, Start Num: 53

Candidate Starts for Sergei_9:

(Start: 53 @7263 has 127 MA's), (80, 7344), (86, 7362), (115, 7470), (128, 7542),

Gene: Shambre1_11 Start: 8534, Stop: 8782, Start Num: 60

Candidate Starts for Shambre1_11:

(Start: 60 @8534 has 1 MA's), (85, 8600), (100, 8654),

Gene: Sharkboy_10 Start: 7881, Stop: 8138, Start Num: 55

Candidate Starts for Sharkboy_10:

(Start: 55 @7881 has 47 MA's), (84, 7944), (115, 8058), (122, 8103),

Gene: ShawBrad_11 Start: 6829, Stop: 7053, Start Num: 68

Candidate Starts for ShawBrad_11:

(18, 6592), (19, 6607), (28, 6691), (49, 6787), (Start: 68 @6829 has 19 MA's), (85, 6868), (89, 6886), (109, 6943), (110, 6949), (115, 6976), (126, 7039),

Gene: Shayna_9 Start: 7487, Stop: 7753, Start Num: 52

Candidate Starts for Shayna_9:

(Start: 46 @7478 has 1 MA's), (Start: 52 @7487 has 19 MA's), (67, 7511), (70, 7517), (92, 7592), (107, 7634), (114, 7667), (126, 7733),

Gene: SheckWes_10 Start: 7025, Stop: 7297, Start Num: 51

Candidate Starts for SheckWes_10:

(Start: 51 @7025 has 53 MA's), (62, 7037), (64, 7043), (113, 7208), (115, 7214), (119, 7238),

Gene: SketchMex_10 Start: 7241, Stop: 7519, Start Num: 51

Candidate Starts for SketchMex_10:

(Start: 51 @7241 has 53 MA's), (70, 7310), (94, 7382),

Gene: Skylord_9 Start: 7425, Stop: 7688, Start Num: 55

Candidate Starts for Skylord_9:

(35, 7368), (Start: 55 @7425 has 47 MA's), (62, 7440), (70, 7455), (107, 7572), (119, 7632), (124, 7662),

Gene: Slay_10 Start: 8101, Stop: 8364, Start Num: 52

Candidate Starts for Slay_10:

(Start: 46 @8092 has 1 MA's), (Start: 52 @8101 has 19 MA's), (70, 8128), (115, 8284), (118, 8299),

Gene: Sleepyhead_11 Start: 7625, Stop: 7879, Start Num: 57

Candidate Starts for Sleepyhead_11:

(Start: 57 @7625 has 24 MA's), (72, 7667), (89, 7706), (92, 7718),

Gene: Softsoap_10 Start: 7654, Stop: 7911, Start Num: 55
Candidate Starts for Softsoap_10:
(Start: 46 @7642 has 1 MA's), (Start: 55 @7654 has 47 MA's), (115, 7831), (123, 7882),

Gene: Solid_9 Start: 6453, Stop: 6743, Start Num: 53
Candidate Starts for Solid_9:
(Start: 53 @6453 has 127 MA's), (Start: 59 @6465 has 3 MA's), (62, 6471), (65, 6483), (69, 6501), (70, 6504), (74, 6519), (78, 6528), (79, 6531), (91, 6576), (103, 6618), (109, 6630), (112, 6654), (123, 6714),

Gene: Sopespian_11 Start: 7257, Stop: 7538, Start Num: 51
Candidate Starts for Sopespian_11:
(25, 7134), (Start: 51 @7257 has 53 MA's),

Gene: Soul22_12 Start: 6947, Stop: 7219, Start Num: 54
Candidate Starts for Soul22_12:
(Start: 54 @6947 has 24 MA's), (69, 7007), (70, 7010), (81, 7040), (87, 7064), (97, 7094), (117, 7154),

Gene: Spartoi_9 Start: 6351, Stop: 6599, Start Num: 53
Candidate Starts for Spartoi_9:
(Start: 53 @6351 has 127 MA's), (62, 6366), (74, 6414), (115, 6540),

Gene: Spooky_11 Start: 6822, Stop: 7046, Start Num: 68
Candidate Starts for Spooky_11:
(Start: 68 @6822 has 19 MA's), (89, 6879), (109, 6936), (110, 6942), (126, 7032),

Gene: Squiddly_12 Start: 7509, Stop: 7733, Start Num: 68
Candidate Starts for Squiddly_12:
(19, 7287), (28, 7371), (49, 7467), (Start: 68 @7509 has 19 MA's), (85, 7548), (89, 7566), (109, 7623), (110, 7629), (115, 7656), (126, 7719),

Gene: Squircle_10 Start: 7884, Stop: 8150, Start Num: 55
Candidate Starts for Squircle_10:
(Start: 46 @7872 has 1 MA's), (Start: 55 @7884 has 47 MA's), (67, 7908), (92, 7989), (107, 8031), (115, 8067), (118, 8082),

Gene: Starburst_12 Start: 7257, Stop: 7538, Start Num: 51
Candidate Starts for Starburst_12:
(25, 7134), (Start: 51 @7257 has 53 MA's),

Gene: SteamedHams_13 Start: 7276, Stop: 7548, Start Num: 51
Candidate Starts for SteamedHams_13:
(Start: 51 @7276 has 53 MA's), (70, 7339),

Gene: Stoor_10 Start: 7897, Stop: 8157, Start Num: 48
Candidate Starts for Stoor_10:
(Start: 48 @7897 has 2 MA's), (84, 7963),

Gene: Stormborn_9 Start: 6448, Stop: 6738, Start Num: 53
Candidate Starts for Stormborn_9:
(Start: 53 @6448 has 127 MA's), (Start: 59 @6460 has 3 MA's), (62, 6466), (65, 6478), (69, 6496), (70, 6499), (74, 6514), (78, 6523), (79, 6526), (91, 6571), (103, 6613), (109, 6625), (112, 6649), (123, 6709),

Gene: Stromboli_10 Start: 7898, Stop: 8161, Start Num: 52

Candidate Starts for Stromboli_10:

(Start: 52 @7898 has 19 MA's), (Start: 60 @7910 has 1 MA's), (70, 7925), (107, 8042), (115, 8081), (118, 8096),

Gene: StuartMinion_10 Start: 7681, Stop: 7935, Start Num: 57

Candidate Starts for StuartMinion_10:

(10, 7405), (14, 7444), (Start: 57 @7681 has 24 MA's), (85, 7753), (100, 7807), (109, 7819), (110, 7825), (115, 7852),

Gene: SummitAcademy_10 Start: 7103, Stop: 7375, Start Num: 51

Candidate Starts for SummitAcademy_10:

(49, 7100), (Start: 51 @7103 has 53 MA's), (62, 7115), (64, 7121), (113, 7286), (115, 7292), (119, 7316),

Gene: SunnyD_9 Start: 7487, Stop: 7753, Start Num: 52

Candidate Starts for SunnyD_9:

(Start: 46 @7478 has 1 MA's), (Start: 52 @7487 has 19 MA's), (67, 7511), (70, 7517), (107, 7634), (114, 7667), (126, 7733),

Gene: Supakev_9 Start: 7263, Stop: 7550, Start Num: 53

Candidate Starts for Supakev_9:

(Start: 53 @7263 has 127 MA's), (70, 7314), (86, 7362), (115, 7470),

Gene: Supernova_9 Start: 6445, Stop: 6735, Start Num: 53

Candidate Starts for Supernova_9:

(Start: 53 @6445 has 127 MA's), (Start: 59 @6457 has 3 MA's), (62, 6463), (69, 6493), (70, 6496), (74, 6511), (78, 6520), (79, 6523), (86, 6544), (91, 6568), (103, 6610), (109, 6622), (112, 6646), (123, 6706),

Gene: Suppi_13 Start: 10175, Stop: 10444, Start Num: 53

Candidate Starts for Suppi_13:

(45, 10163), (Start: 53 @10175 has 127 MA's), (62, 10193), (79, 10253), (86, 10274), (115, 10361),

Gene: Survivors_13 Start: 8017, Stop: 8316, Start Num: 51

Candidate Starts for Survivors_13:

(49, 8014), (Start: 51 @8017 has 53 MA's), (81, 8119), (101, 8188), (115, 8230), (125, 8290), (126, 8293), (127, 8296),

Gene: SweatNTears_13 Start: 7761, Stop: 8030, Start Num: 51

Candidate Starts for SweatNTears_13:

(Start: 51 @7761 has 53 MA's), (70, 7821), (94, 7893),

Gene: Swervy_10 Start: 7625, Stop: 7888, Start Num: 52

Candidate Starts for Swervy_10:

(Start: 46 @7616 has 1 MA's), (Start: 52 @7625 has 19 MA's), (70, 7652), (115, 7808), (118, 7823),

Gene: TMaxx_12 Start: 7340, Stop: 7600, Start Num: 58

Candidate Starts for TMaxx_12:

(Start: 58 @7340 has 13 MA's), (90, 7439), (115, 7520), (116, 7523),

Gene: TattModd_13 Start: 10152, Stop: 10421, Start Num: 53

Candidate Starts for TattModd_13:

(Start: 53 @10152 has 127 MA's), (70, 10203), (74, 10218), (86, 10251),

Gene: TaylorSipht_11 Start: 8123, Stop: 8377, Start Num: 57

Candidate Starts for TaylorSipht_11:

(41, 8087), (44, 8105), (Start: 57 @8123 has 24 MA's), (69, 8147), (85, 8195), (87, 8204),

Gene: Teagster_9 Start: 7487, Stop: 7753, Start Num: 52

Candidate Starts for Teagster_9:

(Start: 46 @7478 has 1 MA's), (Start: 52 @7487 has 19 MA's), (67, 7511), (70, 7517), (92, 7592), (107, 7634), (114, 7667), (126, 7733),

Gene: Temper16_9 Start: 7263, Stop: 7550, Start Num: 53

Candidate Starts for Temper16_9:

(Start: 53 @7263 has 127 MA's), (80, 7344), (86, 7362), (115, 7470), (128, 7542),

Gene: Toad24_12 Start: 8245, Stop: 8499, Start Num: 57

Candidate Starts for Toad24_12:

(24, 8116), (26, 8131), (44, 8227), (Start: 57 @8245 has 24 MA's), (69, 8269), (109, 8383), (110, 8389), (116, 8419),

Gene: Tolls_13 Start: 7279, Stop: 7551, Start Num: 51

Candidate Starts for Tolls_13:

(Start: 51 @7279 has 53 MA's), (70, 7342),

Gene: Troje_11 Start: 7235, Stop: 7504, Start Num: 51

Candidate Starts for Troje_11:

(Start: 51 @7235 has 53 MA's), (70, 7295), (94, 7367),

Gene: TukTuk_10 Start: 7628, Stop: 7948, Start Num: 55

Candidate Starts for TukTuk_10:

(Start: 46 @7616 has 1 MA's), (Start: 55 @7628 has 47 MA's), (70, 7712), (115, 7868), (118, 7883),

Gene: Typha_17 Start: 11749, Stop: 11997, Start Num: 58

Candidate Starts for Typha_17:

(37, 11692), (Start: 58 @11749 has 13 MA's), (73, 11791), (99, 11866), (116, 11914), (124, 11965), (128, 11983),

Gene: Typhonomachy_12 Start: 7257, Stop: 7538, Start Num: 51

Candidate Starts for Typhonomachy_12:

(25, 7134), (Start: 51 @7257 has 53 MA's),

Gene: Urla_9 Start: 7290, Stop: 7559, Start Num: 53

Candidate Starts for Urla_9:

(Start: 53 @7290 has 127 MA's), (86, 7389), (87, 7395), (115, 7476),

Gene: Vallejo_13 Start: 10090, Stop: 10359, Start Num: 53

Candidate Starts for Vallejo_13:

(Start: 53 @10090 has 127 MA's), (70, 10141), (74, 10156), (86, 10189),

Gene: Vine_12 Start: 8032, Stop: 8304, Start Num: 51

Candidate Starts for Vine_12:

(49, 8029), (Start: 51 @8032 has 53 MA's), (113, 8215), (115, 8221), (119, 8245),

Gene: Vitas_9 Start: 7425, Stop: 7688, Start Num: 55

Candidate Starts for Vitas_9:

(35, 7368), (Start: 55 @7425 has 47 MA's), (62, 7440), (70, 7455), (107, 7572), (119, 7632), (124, 7662),

Gene: Volt_45 Start: 17223, Stop: 17507, Start Num: 47

Candidate Starts for Volt_45:

(43, 17217), (Start: 47 @17223 has 6 MA's), (66, 17280), (71, 17307), (102, 17388), (105, 17394),

Gene: Vulpecula_11 Start: 8417, Stop: 8674, Start Num: 57

Candidate Starts for Vulpecula_11:

(1, 7796), (2, 7841), (5, 7955), (8, 8063), (23, 8264), (41, 8381), (Start: 57 @8417 has 24 MA's), (113, 8585),

Gene: Vulture_9 Start: 7261, Stop: 7548, Start Num: 53

Candidate Starts for Vulture_9:

(Start: 53 @7261 has 127 MA's), (86, 7360), (115, 7468),

Gene: WalkingDead_10 Start: 7885, Stop: 8148, Start Num: 57

Candidate Starts for WalkingDead_10:

(Start: 57 @7885 has 24 MA's), (70, 7912), (115, 8068), (118, 8083),

Gene: Wawa_13 Start: 10127, Stop: 10396, Start Num: 53

Candidate Starts for Wawa_13:

(Start: 53 @10127 has 127 MA's), (70, 10178), (74, 10193), (86, 10226),

Gene: Wayne_13 Start: 10221, Stop: 10490, Start Num: 53

Candidate Starts for Wayne_13:

(45, 10209), (Start: 53 @10221 has 127 MA's), (62, 10239), (79, 10299), (86, 10320), (115, 10407),

Gene: Westrich_12 Start: 8233, Stop: 8487, Start Num: 57

Candidate Starts for Westrich_12:

(24, 8104), (26, 8119), (41, 8197), (44, 8215), (Start: 57 @8233 has 24 MA's), (69, 8257), (109, 8371), (110, 8377), (116, 8407),

Gene: Whitney_11 Start: 6824, Stop: 7048, Start Num: 68

Candidate Starts for Whitney_11:

(18, 6587), (19, 6602), (28, 6686), (Start: 68 @6824 has 19 MA's), (85, 6863), (89, 6881), (109, 6938), (110, 6944), (115, 6971), (126, 7034),

Gene: Wizzo_9 Start: 6457, Stop: 6747, Start Num: 53

Candidate Starts for Wizzo_9:

(Start: 53 @6457 has 127 MA's), (Start: 59 @6469 has 3 MA's), (62, 6475), (65, 6487), (69, 6505), (70, 6508), (74, 6523), (78, 6532), (79, 6535), (103, 6622), (109, 6634),

Gene: WonderBoy_9 Start: 7243, Stop: 7512, Start Num: 53

Candidate Starts for WonderBoy_9:

(Start: 53 @7243 has 127 MA's), (86, 7342), (115, 7429),

Gene: Wrigley_12 Start: 7859, Stop: 8116, Start Num: 54

Candidate Starts for Wrigley_12:

(Start: 54 @7859 has 24 MA's), (119, 8069), (126, 8108),

Gene: Yakult_12 Start: 7168, Stop: 7437, Start Num: 51

Candidate Starts for Yakult_12:

(Start: 51 @7168 has 53 MA's),

Gene: Yarn_10 Start: 7269, Stop: 7541, Start Num: 51

Candidate Starts for Yarn_10:

(Start: 51 @7269 has 53 MA's),

Gene: Yoshi_12 Start: 6947, Stop: 7219, Start Num: 54

Candidate Starts for Yoshi_12:

(Start: 54 @6947 has 24 MA's), (69, 7007), (70, 7010), (81, 7040), (87, 7064), (97, 7094), (117, 7154),

Gene: Yucky_13 Start: 7892, Stop: 8164, Start Num: 51

Candidate Starts for Yucky_13:

(49, 7889), (Start: 51 @7892 has 53 MA's), (113, 8075), (115, 8081), (119, 8105),

Gene: Yummy_12 Start: 7139, Stop: 7417, Start Num: 51

Candidate Starts for Yummy_12:

(Start: 51 @7139 has 53 MA's), (70, 7208), (94, 7280),

Gene: Zapner_13 Start: 7472, Stop: 7744, Start Num: 54

Candidate Starts for Zapner_13:

(Start: 54 @7472 has 24 MA's), (69, 7532), (70, 7535), (81, 7565), (87, 7589), (97, 7619), (117, 7679),

Gene: Zareef_15 Start: 8164, Stop: 8463, Start Num: 51

Candidate Starts for Zareef_15:

(49, 8161), (Start: 51 @8164 has 53 MA's), (81, 8266), (101, 8335), (115, 8377), (125, 8437), (126, 8440), (127, 8443),

Gene: Zhuangyuan_13 Start: 8412, Stop: 8666, Start Num: 57

Candidate Starts for Zhuangyuan_13:

(11, 8154), (16, 8205), (24, 8283), (41, 8376), (44, 8394), (Start: 57 @8412 has 24 MA's), (64, 8424), (106, 8544), (115, 8583), (121, 8622),

Gene: Ziko_46 Start: 17163, Stop: 17447, Start Num: 47

Candidate Starts for Ziko_46:

(43, 17157), (Start: 47 @17163 has 6 MA's), (66, 17220), (71, 17247), (102, 17328), (105, 17334),

Gene: Zorro_13 Start: 10106, Stop: 10375, Start Num: 53

Candidate Starts for Zorro_13:

(Start: 53 @10106 has 127 MA's), (70, 10157), (74, 10172), (86, 10205),