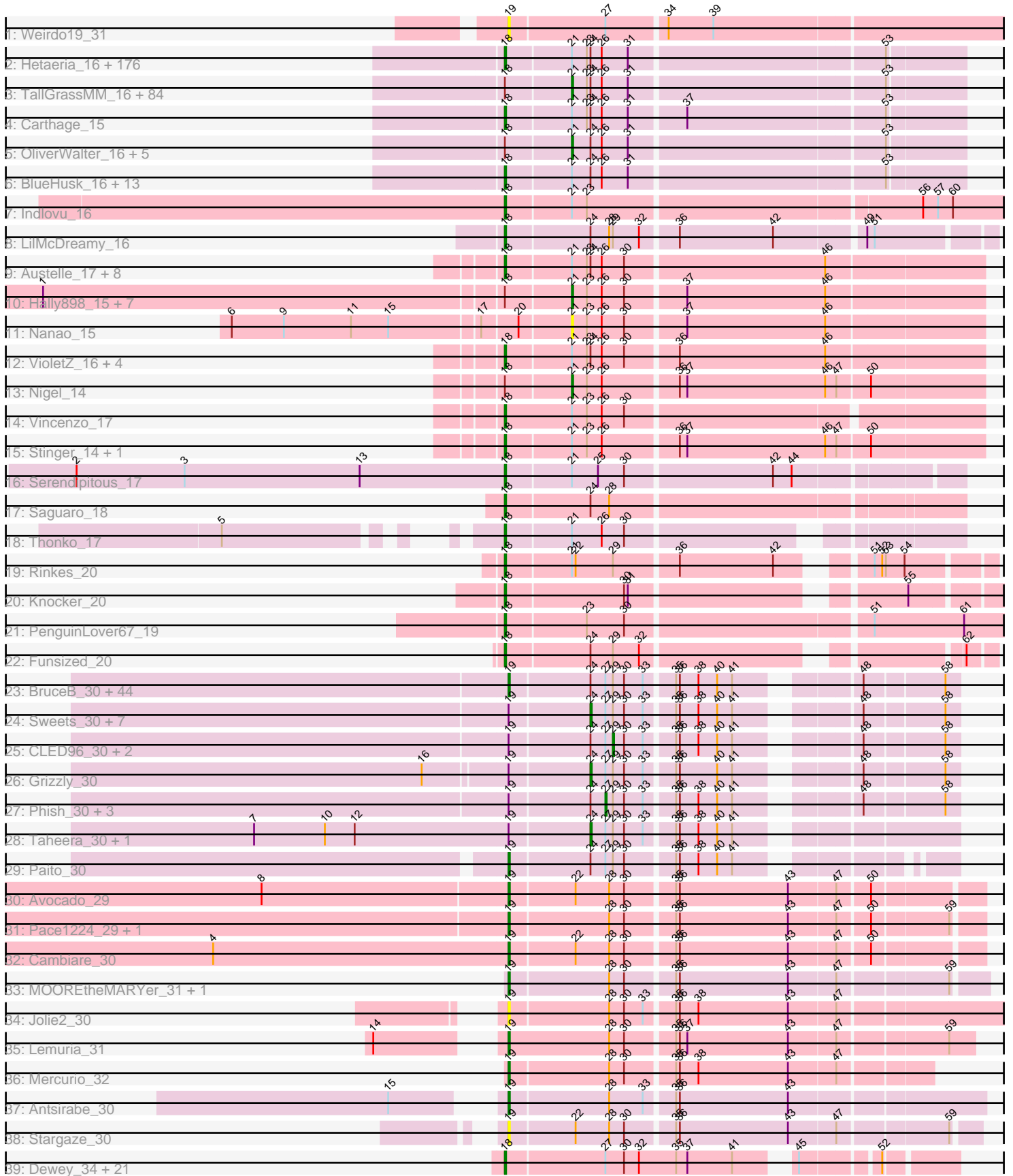


Pham 202580



Note: Tracks are now grouped by subcluster and scaled. Switching in subcluster is indicated by changes in track color. Track scale is now set by default to display the region 30 bp upstream of start 1 to 30 bp downstream of the last possible start. If this default region is judged to be packed too tightly with annotated starts, the track will be further scaled to only show that region of the ORF with annotated starts. This action will be indicated by adding "Zoomed" to the title. For starts, yellow indicates the location of called starts comprised solely of Glimmer/GeneMark auto-annotations, green indicates the location of called starts with at least 1 manual gene annotation.

Pham 202580 Report

This analysis was run 01/18/25 on database version 583.

Pham number 202580 has 417 members, 37 are drafts.

Phages represented in each track:

- Track 1 : Weirido19_31
- Track 2 : Hetaeria_16, Soto_16, HSavage_16, Phergie_15, Zaider_17, Simielle_15, HenryJackson_15, Gyarad_0016, Cornobble_15, FugateOSU_15, Fringe_16, JacAttac_16, Orfeu_15, Phamished_16, Dione_15, Toni_15, Vivaldi_16, Mecca_15, Plmatters_16, Melc17_16, Mcshane_15, Hocus_15, Nacho_0016, CheetO_16, Hartsy_16, JakeO_15, Piglet_0015, Spartan300_16, Squid_16, Morty_16, CamL_16, Roscoe_17, Antonia_15, Mosaic_15, Weher20_16, Serpentine_0016, Struggle_15, KlimbOn_16, PhenghisKhan_15, Vista_16, Grand2040_15, Sophia_15, Solosis_15, Mutante_15, Keitherie_16, PhrankReynolds_15, Maru_15, Roy17_16, Aelin_15, Inchworm_16, Labeouficaum_15, CharlieGBrown_15, Placalicious_15, Adriana_16, Dati_16, Haimas_16, HighStump_15, Oline_15, Pherdinand_16, Jillium_15, Nicole21_16, Chorkpop_16, Phleuron_15, Slatt_16, Derpp_15, Burr_15, Selr12_16, DaddyDaniels_16, Valjean_16, Pipsqueak_16, Kwadwo_15, Virapocalypse_16, Childish_15, Ricotta_15, Soile_16, Mulan_15, Duggie_15, MichaelPhcott_15, Kailash_16, Magic8_16, Zonia_16, True_15, TyrionL_15, Timmi_15, MitKao_16, Boehler_16, Olak_15, JangoPhett_16, Durga_16, BlackStallion_16, Riggan_16, Bishoperium_15, Mesh1_16, UAch1_16, AbsoluteMadLad_15, Quisquillae_16, TomBombadil_16, Wallhey_15, Craff_16, Waterdiva_16, PhrodoBaggins_15, Gareth_15, Kwksand96_15, Beaglebox_15, Mag7_15, Cannibal_16, FriarPreacher_16, Sheila_16, Samaymay_16, LostAndPhound_15, Tooj_16, Schadenfreude_15, Freya_15, Haleema_15, Scrick_15, RedMaple_15, ProfessorX_16, Pacifista_15, Lulumae_15, Chaelin_15, AltPhacts_16, Xavier_15, SassyCat97_15, Charles1_16, Emiris_16, Cobra_16, QueenBeane_16, Telesworld_15, LeeLot_16, Giraffe_16, Omniscient_16, Bluephacebaby_15, KingTut_15, Vaticameos_16, PinheadLarry_16, Held_16, Lego3393_16, Kimbrough_16, CampRoach_16, Kahve_15, Lumine_15, Tomlarah_16, Legolas_15, Matalotodo_16, Roliet_16, GeneCoco_16, LemonSlice_16, Phareon_16, Hertubise_16, Jiminy_15, Fozzie_15, Zelda_16, EmpTee_16, DonSanchon_15, Windsor_15, MRabcd_15, LasagnaCat_16, Altwerkus_15, Frankicide_16, LuckyMarjie_15, Daka_16, Dice_15, Cher_15, DoesntMatter_16, Buckeye_16, Trypo_16, Brilliant_16, Veritas_15, Skippy_16, Phunky_16, YouGoGlencoco_16, Squiggle_16, Cosmolli16_15, ShiVal_16, Surely_16, Kloppinator_16, PhatCats2014_16
- Track 3 : TallGrassMM_16, Puhltonio_16, Vaishali24_15, Numberten_16, Andre_16, Doddsville_16, OSmaximus_16, Gwilliam_16, Yoshand_16, Virgeve_15, Etaye_16, Newman_16, Khan1_16, Daffy_16, DelRivs_15, ABU_16, Hamish_16, Suffolk_16, Rimu_15, ThreeOh3D2_16, Badfish_16, ImtiyazSitla_15, PhatLouie_16, Kikipoo_16,

Jesabah_16, Serendipity_16, Maskar_15, Megatron_16, BatteryCK_15, Swish_16, Gwennie1_16, DuchessDung_15, Orwigg_16, Pinkman_15, KLucky39_16, MrPhizzler_15, UncleHowie_16, FluffyNinja_16, Gophee_16, Mesmerelda_16, Schueller_15, AngelCake_15, Iridessa_15, Mana_15, Morgushi_16, Sigman_16, MelsMeow_15, Fang_16, Phipps_16, Chute_15, JDog_15, Scoot17C_16, Lasso_16, Ashraf_15, Lopsy_15, Orion_16, Vortex_16, PG1_16, Murdoc_16, IsaacEli_16, ElvisPhasley_16, Potter_15, Pops_16, Longacauda_15, Oosterbaan_16, Anderson_16, Harvey_16, Nyala_15, Chah_16, SilverBell_16, Inverness_16, Caspiboi_17, Iridoclysis_16, Banjo_15, Thora_16, Eremos_16, Apizium_15, Katniss_16, Colbert_16, Coletti_15, Swiphy_16, LeiMonet_16, Eugenia_16, Megamind20_16, Nathan_17

• Track 4 : Carthage_15

• Track 5 : OliverWalter_16, Jiraiya_16, Prickles_16, Thunderbird_15, Manad_15, Basato_17

• Track 6 : BlueHusk_16, Mikota_16, Crownjwl_16, DirtJuice_16, MiniBoss_16, Horchata_16, SDcharge11_16, Podrick_16, Robyn_15, Lulwa_16, Chunky_16, Dingo_16, Usavi_16, KingVeVeVe_16

• Track 7 : Indlovu_16

• Track 8 : LilMcDreamy_16

• Track 9 : Austelle_17, Magpie_16, Mudslide_16, Frederick_16, Mithril_16, Lolalove_16, Prince_16, Fortunato_16, BrownCNA_17

• Track 10 : Hally898_15, Lambano_15, ChrisnMich_15, Epah_15, Poster_15, GinPorsche_15, Antihero_15, Ahwei_15

• Track 11 : Nanao_15

• Track 12 : VioletZ_16, Hydro_16, Heath_16, Hangman_16, Waleliano_16

• Track 13 : Nigel_14

• Track 14 : Vincenzo_17

• Track 15 : Stinger_14, JAMaL_16

• Track 16 : Serendipitous_17

• Track 17 : Saguaro_18

• Track 18 : Thonko_17

• Track 19 : Rinkes_20

• Track 20 : Knocker_20

• Track 21 : PenguinLover67_19

• Track 22 : Funsized_20

• Track 23 : BruceB_30, Halo_30, Kareem_30, Frosty24_30, Rabbs_30, Aroostook_30, Zombie_30, Darionha_30, JorRay_30, Phreak_30, Annihilator_30, Cherrybomb426_30, Sneeze_30, Remy19_30, Jane_30, PinkYoshi_30, Jolene_30, CassieYates_30, Angel_30, GoldenAsh_30, Hope_30, TomBrady_30, ECartman_30, Marmie_30, Renaissance_30, Gideon_30, Periodt_30, Avrafan_30, ZoMa_30, Schiebel_30, Sizemore_30, Jonghyun_30, BQuat_30, Coleslaw_30, BPs_30, LouisV14_30, Plagueis_30, Peeb_30, Mowgli_30, Chance64_30, DMoney_30, ShaboiShabazz_30, OctaviousRex_30, Liefie_30, Gomashi_30

• Track 24 : Sweets_30, Kasen3_30, Olga_30, Hotshotbaby7_30, Barkley26_30, DNAllI_0030, Cedasite_30, Camri_30

• Track 25 : CLED96_30, Wendigo_30, TinaBug_30

• Track 26 : Grizzly_30

• Track 27 : Phish_30, Crespo_30, AzulaCat_30, Maliketh_30

• Track 28 : Taheera_30, Terror_30

• Track 29 : Paito_30

• Track 30 : Avocado_29

• Track 31 : Pace1224_29, FlagStaff_29

• Track 32 : Cambiare_30

- Track 33 : MOOREtheMARYer_31, Pinnie_31
- Track 34 : Jolie2_30
- Track 35 : Lemuria_31
- Track 36 : Mercurio_32
- Track 37 : Antsirabe_30
- Track 38 : Stargaze_30
- Track 39 : Dewey_34, Forge_34, Hail_34, OBUpride_35, Luna22_34, Hadrien_35, HH92_34, Wishmaker_34, Amymech_35, Gancho_34, Webster2_35, Luke_35, Amochick_35, Giles_34, LilHazelNut_35, Ubuntu_35, DeepSoil15_35, Kinbote_35, Gravaillia_34, Evanesce_34, Ein37_35, Daegal_36

Summary of Final Annotations (See graph section above for start numbers):

The start number called the most often in the published annotations is 18, it was called in 240 of the 380 non-draft genes in the pham.

Genes that call this "Most Annotated" start:

- AbsoluteMadLad_15, Adriana_16, Aelin_15, AltPhacts_16, Altwerkus_15, Amochick_35, Amymech_35, Antonia_15, Austelle_17, Beaglebox_15, Bishoperium_15, BlackStallion_16, BlueHusk_16, Bluephacebaby_15, Boehler_16, Brilliant_16, BrownCNA_17, Buckeye_16, Burr_15, CamL_16, CampRoach_16, Cannibal_16, Carthage_15, Chaelin_15, Charles1_16, CharlieGBrown_15, CheetO_16, Cher_15, Childish_15, Chorkpop_16, Chunky_16, Cobra_16, Cornobble_15, Cosmolli16_15, Craff_16, Crownjwl_16, DaddyDaniels_16, Daegal_36, Daka_16, Dati_16, DeepSoil15_35, Derpp_15, Dewey_34, Dice_15, Dingo_16, Dione_15, DirtJuice_16, DoesntMatter_16, DonSanchon_15, Duggie_15, Durga_16, Ein37_35, Emiris_16, EmpTee_16, Evanesce_34, Forge_34, Fortunato_16, Fozzie_15, Frankicide_16, Frederick_16, Freya_15, FriarPreacher_16, Fringe_16, FugateOSU_15, Funsized_20, Gancho_34, Gareth_15, GeneCoco_16, Giles_34, Giraffe_16, Grand2040_15, Gravaillia_34, Gyarad_0016, HH92_34, HSavage_16, Hadrien_35, Hail_34, Haimas_16, Haleema_15, Hangman_16, Hartsy_16, Heath_16, Held_16, HenryJackson_15, Hertubise_16, Hetaeria_16, HighStump_15, Hocus_15, Horchata_16, Hydro_16, Inchworm_16, Indlovu_16, JAMaL_16, JacAttac_16, JakeO_15, JangoPhett_16, Jillium_15, Jiminy_15, Kahve_15, Kailash_16, Keitherie_16, Kimbrough_16, Kinbote_35, KingTut_15, KingVeVeVe_16, KlimbOn_16, Kloppinator_16, Knocker_20, Kwadwo_15, Kwksand96_15, Labeouficaum_15, LasagnaCat_16, LeeLot_16, Lego3393_16, Legolas_15, LemonSlice_16, LilHazelNut_35, LilMcDreamy_16, Lolalove_16, LostAndPhound_15, LuckyMarjie_15, Luke_35, Lulumae_15, Lulwa_16, Lumine_15, Luna22_34, MRabcd_15, Mag7_15, Magic8_16, Magpie_16, Maru_15, Matalotodo_16, Mcshane_15, Mecca_15, Melc17_16, Mesh1_16, MichaelPhcott_15, Mikota_16, MiniBoss_16, MitKao_16, Mithril_16, Morty_16, Mosaic_15, Mudslide_16, Mulan_15, Mutante_15, Nacho_0016, Nicole21_16, OBUpride_35, Olak_15, Oline_15, Omniscient_16, Orfeu_15, Pacifista_15, PenguinLover67_19, Phamished_16, Phareon_16, PhatCats2014_16, PhenghisKhan_15, Pherdinand_16, Phergie_15, Phleuron_15, PhrankReynolds_15, PhrodoBaggins_15, Phunky_16, Piglet_0015, PinheadLarry_16, Pipsqueak_16, Placalicious_15, Plmatters_16, Podrick_16, Prince_16, ProfessorX_16, QueenBeane_16, Quisquillae_16, RedMaple_15, Ricotta_15, Riggan_16, Rinkes_20, Robyn_15, Roliet_16, Roscoe_17, Roy17_16, SDcharge11_16, Saguaro_18, Samaymay_16, SassyCat97_15,

Schadenfreude_15, Scrick_15, Selr12_16, Serendipitous_17, Serpentine_0016, Sheila_16, ShiVal_16, Simielle_15, Skippy_16, Slatt_16, Soile_16, Solosis_15, Sophia_15, Soto_16, Spartan300_16, Squid_16, Squiggle_16, Stinger_14, Struggle_15, Surely_16, Telesworld_15, Thonko_17, Timmi_15, TomBombadil_16, Tomlarah_16, Toni_15, Tooj_16, True_15, Trypo_16, TyrionL_15, UAch1_16, Ubuntu_35, Usavi_16, Valjean_16, Vaticameos_16, Veritas_15, Vincenzo_17, VioletZ_16, Virapocalypse_16, Vista_16, Vivaldi_16, Waleliano_16, Wallhey_15, Waterdiva_16, Webster2_35, Weher20_16, Windsor_15, Wishmaker_34, Xavier_15, YouGoGlencoco_16, Zaider_17, Zelda_16, Zonia_16,

Genes that have the "Most Annotated" start but do not call it:

- ABU_16, Ahwei_15, Anderson_16, Andre_16, AngelCake_15, Antihero_15, Apizium_15, Ashraf_15, Badfish_16, Banjo_15, Basato_17, BatteryCK_15, Caspiboi_17, Chah_16, ChrisnMich_15, Chute_15, Colbert_16, Coletti_15, Daffy_16, DelRivs_15, Doddsville_16, DuchessDung_15, ElvisPhasley_16, Epah_15, Eremos_16, Etaye_16, Eugenia_16, Fang_16, FluffyNinja_16, GinPorsche_15, Gophee_16, Gwennie1_16, Gwilliam_16, Hally898_15, Hamish_16, Harvey_16, ImtiyazSitla_15, Inverness_16, Iridessa_15, Iridoclysis_16, IsaacEli_16, JDog_15, Jesabah_16, Jiraiya_16, KLucky39_16, Katniss_16, Khan1_16, Kikipoo_16, Lambano_15, Lasso_16, LeiMonet_16, Longacauda_15, Lopsy_15, Mana_15, Manad_15, Maskar_15, Megamind20_16, Megatron_16, MelsMeow_15, Mesmerelda_16, Morgushi_16, MrPhizzler_15, Murdoc_16, Nathan_17, Newman_16, Nigel_14, Numberten_16, Nyala_15, OSmaximus_16, OliverWalter_16, Oosterbaan_16, Orion_16, Orwigg_16, PG1_16, PhatLouie_16, Phipps_16, Pinkman_15, Pops_16, Poster_15, Potter_15, Prickles_16, Puhltonio_16, Rimu_15, Schueller_15, Scoot17C_16, Serendipity_16, Sigman_16, SilverBell_16, Suffolk_16, Swiphy_16, Swish_16, TallGrassMM_16, Thora_16, ThreeOh3D2_16, Thunderbird_15, UncleHowie_16, Vaishali24_15, Virgeve_15, Vortex_16, Yoshand_16,

Genes that do not have the "Most Annotated" start:

- Angel_30, Annihilator_30, Antsirabe_30, Aroostook_30, Avocado_29, Avrafan_30, AzulaCat_30, BPs_30, BQuat_30, Barkley26_30, BruceB_30, CLED96_30, Cambiare_30, Camri_30, CassieYates_30, Cedasite_30, Chance64_30, Cherrybomb426_30, Coleslaw_30, Crespo_30, DMoney_30, DNAllI_0030, Darionha_30, ECartman_30, FlagStaff_29, Frosty24_30, Gideon_30, GoldenAsh_30, Gomashi_30, Grizzly_30, Halo_30, Hope_30, Hotshotbaby7_30, Jane_30, Jolene_30, Jolie2_30, Jonghyun_30, JorRay_30, Kareem_30, Kasen3_30, Lemuria_31, Liefie_30, LouisV14_30, MOOREtheMARYer_31, Maliketh_30, Marmie_30, Mercurio_32, Mowgli_30, Nanao_15, OctaviousRex_30, Olga_30, Pace1224_29, Paito_30, Peeb_30, Periodt_30, Phish_30, Phreak_30, PinkYoshi_30, Pinnie_31, Plagueis_30, Rabbs_30, Remy19_30, Renaissance_30, Schiebel_30, ShaboiShabazz_30, Sizemore_30, Sneeze_30, Stargaze_30, Sweets_30, Taheera_30, Terror_30, TinaBug_30, TomBrady_30, Weirido19_31, Wendigo_30, ZoMa_30, Zombie_30,

Summary by start number:

Start 18:

- Found in 340 of 417 (81.5%) of genes in pham
- Manual Annotations of this start: 240 of 380
- Called 70.6% of time when present

• Phage (with cluster) where this start called: AbsoluteMadLad_15 (B1), Adriana_16 (B1), Aelin_15 (B1), AltPhacts_16 (B1), Altwerkus_15 (B1), Amochick_35 (Q), Amymech_35 (Q), Antonia_15 (B1), Austelle_17 (B4), Beaglebox_15 (B1), Bishoperium_15 (B1), BlackStallion_16 (B1), BlueHusk_16 (B1), Bluephacebaby_15 (B1), Boehler_16 (B1), Brilliant_16 (B1), BrownCNA_17 (B4), Buckeye_16 (B1), Burr_15 (B1), CamL_16 (B1), CampRoach_16 (B1), Cannibal_16 (B1), Carthage_15 (B1), Chaelin_15 (B1), Charles1_16 (B1), CharlieGBrown_15 (B1), CheetO_16 (B1), Cher_15 (B1), Childish_15 (B1), Chorkpop_16 (B1), Chunky_16 (B1), Cobra_16 (B1), Cornobble_15 (B1), Cosmolli16_15 (B1), Craff_16 (B1), Crownjwl_16 (B1), DaddyDaniels_16 (B1), Daegal_36 (Q), Daka_16 (B1), Dati_16 (B1), DeepSoil15_35 (Q), Derpp_15 (B1), Dewey_34 (Q), Dice_15 (B1), Dingo_16 (B1), Dione_15 (B1), DirtJuice_16 (B1), DoesntMatter_16 (B1), DonSanchon_15 (B1), Duggie_15 (B1), Durga_16 (B1), Ein37_35 (Q), Emiris_16 (B1), EmpTee_16 (B1), Evanesce_34 (Q), Forge_34 (Q), Fortunato_16 (B4), Fozzie_15 (B1), Frankicide_16 (B1), Frederick_16 (B4), Freya_15 (B1), FriarPreacher_16 (B1), Fringe_16 (B1), FugateOSU_15 (B1), Funsized_20 (B9), Gancho_34 (Q), Gareth_15 (B1), GeneCoco_16 (B1), Giles_34 (Q), Giraffe_16 (B1), Grand2040_15 (B1), Gravallia_34 (Q), Gyarad_0016 (B1), HH92_34 (Q), HSavage_16 (B1), Hadrien_35 (Q), Hail_34 (Q), Haimas_16 (B1), Haleema_15 (B1), Hangman_16 (B4), Hartsy_16 (B1), Heath_16 (B4), Held_16 (B1), HenryJackson_15 (B1), Hertubise_16 (B1), Hetaeria_16 (B1), HighStump_15 (B1), Hocus_15 (B1), Horchata_16 (B1), Hydro_16 (B4), Inchworm_16 (B1), Indlovu_16 (B11), JAMaL_16 (B4), JacAttac_16 (B1), JakeO_15 (B1), JangoPhett_16 (B1), Jillium_15 (B1), Jiminy_15 (B1), Kahve_15 (B1), Kailash_16 (B1), Keitherie_16 (B1), Kimbrough_16 (B1), Kinbote_35 (Q), KingTut_15 (B1), KingVeVeVe_16 (B1), KlimbOn_16 (B1), Kloppinator_16 (B1), Knocker_20 (B9), Kwadwo_15 (B1), Kwksand96_15 (B1), Labeouficaum_15 (B1), LasagnaCat_16 (B1), LeeLot_16 (B1), Lego3393_16 (B1), Legolas_15 (B1), LemonSlice_16 (B1), LilHazelNut_35 (Q), LilMcDreamy_16 (B12), Lolalove_16 (B4), LostAndPhound_15 (B1), LuckyMarjie_15 (B1), Luke_35 (Q), Lulumae_15 (B1), Lulwa_16 (B1), Lumine_15 (B1), Luna22_34 (Q), MRabcd_15 (B1), Mag7_15 (B1), Magic8_16 (B1), Magpie_16 (B4), Maru_15 (B1), Matalotodo_16 (B1), Mcshane_15 (B1), Mecca_15 (B1), Melc17_16 (B1), Mesh1_16 (B1), MichaelPhcott_15 (B1), Mikota_16 (B1), MiniBoss_16 (B1), MitKao_16 (B1), Mithril_16 (B4), Morty_16 (B1), Mosaic_15 (B1), Mudslide_16 (B4), Mulan_15 (B1), Mutante_15 (B1), Nacho_0016 (B1), Nicole21_16 (B1), OBUpride_35 (Q), Olak_15 (B1), Oline_15 (B1), Omniscient_16 (B1), Orfeu_15 (B1), Pacifista_15 (B1), PenguinLover67_19 (B9), Phamished_16 (B1), Phareon_16 (B1), PhatCats2014_16 (B1), PhenghisKhan_15 (B1), Pherdinand_16 (B1), Phergie_15 (B1), Phleuron_15 (B1), PhrankReynolds_15 (B1), PhrodoBaggins_15 (B1), Phunky_16 (B1), Piglet_0015 (B1), PinheadLarry_16 (B1), Pipsqueak_16 (B1), Placalicious_15 (B1), Plmatters_16 (B1), Podrick_16 (B1), Prince_16 (B4), ProfessorX_16 (B1), QueenBeane_16 (B1), Quisquiliae_16 (B1), RedMaple_15 (B1), Ricotta_15 (B1), Riggan_16 (B1), Rinkes_20 (B9), Robyn_15 (B1), Roliet_16 (B1), Roscoe_17 (B1), Roy17_16 (B1), SDcharge11_16 (B1), Saguaro_18 (B7), Samaymay_16 (B1), SassyCat97_15 (B1), Schadenfreude_15 (B1), Scrick_15 (B1), Selr12_16 (B1), Serendipitous_17 (B5), Serpentine_0016 (B1), Sheila_16 (B1), ShiVal_16 (B1), Simielle_15 (B1), Skippy_16 (B1), Slatt_16 (B1), Soile_16 (B1), Solosis_15 (B1), Sophia_15 (B1), Soto_16 (B1), Spartan300_16 (B1), Squid_16 (B1), Squiggle_16 (B1), Stinger_14 (B4), Struggle_15 (B1), Surely_16 (B1), Telesworld_15 (B1), Thonko_17 (B8), Timmi_15 (B1), TomBombadil_16 (B1), Tomlarah_16 (B1), Toni_15 (B1), Tooj_16 (B1), True_15 (B1), Trypo_16 (B1), TyrionL_15 (B1), UAch1_16 (B1), Ubuntu_35 (Q), Usavi_16 (B1), Valjean_16 (B1), Vaticameos_16 (B1), Veritas_15 (B1), Vincenzo_17 (B4), VioletZ_16 (B4), Virapocalypse_16 (B1), Vista_16 (B1), Vivaldi_16 (B1), Waleliano_16 (B4), Wallhey_15 (B1), Waterdiva_16

(B1), Webster2_35 (Q), Weher20_16 (B1), Windsor_15 (B1), Wishmaker_34 (Q), Xavier_15 (B1), YouGoGlencoco_16 (B1), Zaider_17 (B1), Zelda_16 (B1), Zonia_16 (B1),

Start 19:

- Found in 76 of 417 (18.2%) of genes in pham
- Manual Annotations of this start: 54 of 380
- Called 76.3% of time when present
- Phage (with cluster) where this start called: Angel_30 (G1), Annihilator_30 (G1), Antsirabe_30 (G5), Aroostook_30 (G1), Avocado_29 (G2), Avrafan_30 (G1), BPs_30 (G1), BQuat_30 (G1), BruceB_30 (G1), Cambiare_30 (G2), CassieYates_30 (G1), Chance64_30 (G1), Cherrybomb426_30 (G1), Coleslaw_30 (G1), DMoney_30 (G1), Darionha_30 (G1), ECartman_30 (G1), FlagStaff_29 (G2), Frosty24_30 (G1), Gideon_30 (G1), GoldenAsh_30 (G1), Gomashi_30 (G1), Halo_30 (G1), Hope_30 (G1), Jane_30 (G1), Jolene_30 (G1), Jolie2_30 (G4), Jonghyun_30 (G1), JorRay_30 (G1), Kareem_30 (G1), Lemuria_31 (G4), Liefie_30 (G1), LouisV14_30 (G1), MOOREtheMARYer_31 (G3), Marmie_30 (G1), Mercurio_32 (G4), Mowgli_30 (G1), OctaviousRex_30 (G1), Pace1224_29 (G2), Paito_30 (G1), Peeb_30 (G1), Periodt_30 (G1), Phreak_30 (G1), PinkYoshi_30 (G1), Pinnie_31 (G3), Plagueis_30 (G1), Rabbs_30 (G1), Remy19_30 (G1), Renaissance_30 (G1), Schibel_30 (G1), ShaboiShabazz_30 (G1), Sizemore_30 (G1), Sneeze_30 (G1), Stargaze_30 (G5), TomBrady_30 (G1), Weirdo19_31 (AH), ZoMa_30 (G1), Zombie_30 (G1),

Start 21:

- Found in 314 of 417 (75.3%) of genes in pham
- Manual Annotations of this start: 72 of 380
- Called 32.2% of time when present
- Phage (with cluster) where this start called: ABU_16 (B1), Ahwei_15 (B4), Anderson_16 (B1), Andre_16 (B1), AngelCake_15 (B1), Antihero_15 (B4), Apizium_15 (B1), Ashraf_15 (B1), Badfish_16 (B1), Banjo_15 (B1), Basato_17 (B1), BatteryCK_15 (B1), Caspiboi_17 (B1), Chah_16 (B1), ChrisnMich_15 (B4), Chute_15 (B1), Colbert_16 (B1), Coletti_15 (B1), Daffy_16 (B1), DelRivs_15 (B1), Doddsville_16 (B1), DuchessDung_15 (B1), ElvisPhasley_16 (B1), Epah_15 (B4), Eremos_16 (B1), Etaye_16 (B1), Eugenia_16 (B1), Fang_16 (B1), FluffyNinja_16 (B1), GinPorsche_15 (B4), Gophee_16 (B1), Gwennie1_16 (B1), Gwilliam_16 (B1), Hally898_15 (B4), Hamish_16 (B1), Harvey_16 (B1), ImtiyazSitla_15 (B1), Inverness_16 (B1), Iridessa_15 (B1), Iridoclysis_16 (B1), IsaacEli_16 (B1), JDog_15 (B1), Jesabah_16 (B1), Jiraiya_16 (B1), KLucky39_16 (B1), Katniss_16 (B1), Khan1_16 (B1), Kikipoo_16 (B1), Lambano_15 (B4), Lasso_16 (B1), LeiMonet_16 (B1), Longacauda_15 (B1), Lopsy_15 (B1), Mana_15 (B1), Manad_15 (B1), Maskar_15 (B1), Megamind20_16 (B1), Megatron_16 (B1), MelsMeow_15 (B1), Mesmerelda_16 (B1), Morgushi_16 (B1), MrPhizzler_15 (B1), Murdoc_16 (B1), Nanao_15 (B4), Nathan_17 (B1), Newman_16 (B1), Nigel_14 (B4), Numberten_16 (B1), Nyala_15 (B1), OSmaximus_16 (B1), OliverWalter_16 (B1), Oosterbaan_16 (B1), Orion_16 (B1), Orwigg_16 (B1), PG1_16 (B1), PhatLouie_16 (B1), Phipps_16 (B1), Pinkman_15 (B1), Pops_16 (B1), Poster_15 (B4), Potter_15 (B1), Prickles_16 (B1), Puhltonio_16 (B1), Rimu_15 (B1), Schueller_15 (B1), Scoot17C_16 (B1), Serendipity_16 (B1), Sigman_16 (B1), SilverBell_16 (B1), Suffolk_16 (B1), Swiphy_16 (B1), Swish_16 (B1), TallGrassMM_16 (B1), Thora_16 (B1), ThreeOh3D2_16 (B1), Thunderbird_15 (B1), UncleHowie_16 (B1), Vaishali24_15 (B1), Virgeve_15 (B1), Vortex_16 (B1), Yoshand_16 (B1),

Start 24:

- Found in 364 of 417 (87.3%) of genes in pham
- Manual Annotations of this start: 11 of 380
- Called 3.0% of time when present
- Phage (with cluster) where this start called: Barkley26_30 (G1), Camri_30 (G1), Cedasite_30 (G1), DNAIII_0030 (G1), Grizzly_30 (G1), Hotshotbaby7_30 (G1), Kasen3_30 (G1), Olga_30 (G1), Sweets_30 (G1), Taheera_30 (G1), Terror_30 (G1),

Start 27:

- Found in 87 of 417 (20.9%) of genes in pham
- Manual Annotations of this start: 2 of 380
- Called 4.6% of time when present
- Phage (with cluster) where this start called: AzulaCat_30 (G1), Crespo_30 (G1), Maliketh_30 (G1), Phish_30 (G1),

Start 29:

- Found in 67 of 417 (16.1%) of genes in pham
- Manual Annotations of this start: 1 of 380
- Called 4.5% of time when present
- Phage (with cluster) where this start called: CLED96_30 (G1), TinaBug_30 (G1), Wendigo_30 (G1),

Summary by clusters:

There are 15 clusters represented in this pham: B4, G5, G4, G3, G2, G1, AH, Q, B5, B7, B12, B1, B11, B8, B9,

Info for manual annotations of cluster B1:

- Start number 18 was manually annotated 192 times for cluster B1.
- Start number 21 was manually annotated 70 times for cluster B1.

Info for manual annotations of cluster B11:

- Start number 18 was manually annotated 1 time for cluster B11.

Info for manual annotations of cluster B12:

- Start number 18 was manually annotated 1 time for cluster B12.

Info for manual annotations of cluster B4:

- Start number 18 was manually annotated 17 times for cluster B4.
- Start number 21 was manually annotated 2 times for cluster B4.

Info for manual annotations of cluster B5:

- Start number 18 was manually annotated 1 time for cluster B5.

Info for manual annotations of cluster B7:

- Start number 18 was manually annotated 1 time for cluster B7.

Info for manual annotations of cluster B8:

- Start number 18 was manually annotated 1 time for cluster B8.

Info for manual annotations of cluster B9:

- Start number 18 was manually annotated 4 times for cluster B9.

Info for manual annotations of cluster G1:

- Start number 19 was manually annotated 46 times for cluster G1.
- Start number 24 was manually annotated 11 times for cluster G1.
- Start number 27 was manually annotated 2 times for cluster G1.
- Start number 29 was manually annotated 1 time for cluster G1.

Info for manual annotations of cluster G2:

- Start number 19 was manually annotated 3 times for cluster G2.

Info for manual annotations of cluster G3:

- Start number 19 was manually annotated 2 times for cluster G3.

Info for manual annotations of cluster G4:

- Start number 19 was manually annotated 2 times for cluster G4.

Info for manual annotations of cluster G5:

- Start number 19 was manually annotated 1 time for cluster G5.

Info for manual annotations of cluster Q:

- Start number 18 was manually annotated 22 times for cluster Q.

Gene Information:

Gene: ABU_16 Start: 13693, Stop: 13992, Start Num: 21

Candidate Starts for ABU_16:

(Start: 18 @13642 has 240 MA's), (Start: 21 @13693 has 72 MA's), (23, 13705), (Start: 24 @13708 has 11 MA's), (26, 13717), (31, 13738), (53, 13933),

Gene: AbsoluteMadLad_15 Start: 13646, Stop: 13996, Start Num: 18

Candidate Starts for AbsoluteMadLad_15:

(Start: 18 @13646 has 240 MA's), (Start: 21 @13697 has 72 MA's), (23, 13709), (Start: 24 @13712 has 11 MA's), (26, 13721), (31, 13742), (53, 13937),

Gene: Adriana_16 Start: 13644, Stop: 13994, Start Num: 18

Candidate Starts for Adriana_16:

(Start: 18 @13644 has 240 MA's), (Start: 21 @13695 has 72 MA's), (23, 13707), (Start: 24 @13710 has 11 MA's), (26, 13719), (31, 13740), (53, 13935),

Gene: Aelin_15 Start: 13209, Stop: 13559, Start Num: 18

Candidate Starts for Aelin_15:

(Start: 18 @13209 has 240 MA's), (Start: 21 @13260 has 72 MA's), (23, 13272), (Start: 24 @13275 has 11 MA's), (26, 13284), (31, 13305), (53, 13500),

Gene: Ahwei_15 Start: 14361, Stop: 14681, Start Num: 21

Candidate Starts for Ahwei_15:

(1, 13947), (Start: 18 @14310 has 240 MA's), (Start: 21 @14361 has 72 MA's), (23, 14373), (26, 14385), (30, 14403), (37, 14448), (46, 14559),

Gene: AltPhacts_16 Start: 13639, Stop: 13989, Start Num: 18

Candidate Starts for AltPhacts_16:

(Start: 18 @13639 has 240 MA's), (Start: 21 @13690 has 72 MA's), (23, 13702), (Start: 24 @13705 has 11 MA's), (26, 13714), (31, 13735), (53, 13930),

Gene: Altwerkus_15 Start: 13339, Stop: 13689, Start Num: 18

Candidate Starts for Altwerkus_15:

(Start: 18 @13339 has 240 MA's), (Start: 21 @13390 has 72 MA's), (23, 13402), (Start: 24 @13405 has 11 MA's), (26, 13414), (31, 13435), (53, 13630),

Gene: Amochick_35 Start: 30022, Stop: 30342, Start Num: 18

Candidate Starts for Amochick_35:

(Start: 18 @30022 has 240 MA's), (Start: 27 @30100 has 2 MA's), (30, 30115), (32, 30127), (35, 30157), (37, 30166), (41, 30202), (45, 30235), (52, 30289),

Gene: Amymech_35 Start: 30016, Stop: 30336, Start Num: 18

Candidate Starts for Amymech_35:

(Start: 18 @30016 has 240 MA's), (Start: 27 @30094 has 2 MA's), (30, 30109), (32, 30121), (35, 30151), (37, 30160), (41, 30196), (45, 30229), (52, 30283),

Gene: Anderson_16 Start: 13686, Stop: 13985, Start Num: 21

Candidate Starts for Anderson_16:

(Start: 18 @13635 has 240 MA's), (Start: 21 @13686 has 72 MA's), (23, 13698), (Start: 24 @13701 has 11 MA's), (26, 13710), (31, 13731), (53, 13926),

Gene: Andre_16 Start: 13684, Stop: 13983, Start Num: 21

Candidate Starts for Andre_16:

(Start: 18 @13633 has 240 MA's), (Start: 21 @13684 has 72 MA's), (23, 13696), (Start: 24 @13699 has 11 MA's), (26, 13708), (31, 13729), (53, 13924),

Gene: Angel_30 Start: 26790, Stop: 27110, Start Num: 19

Candidate Starts for Angel_30:

(Start: 19 @26790 has 54 MA's), (Start: 24 @26853 has 11 MA's), (Start: 27 @26865 has 2 MA's), (Start: 29 @26871 has 1 MA's), (30, 26880), (33, 26895), (35, 26916), (36, 26919), (38, 26934), (40, 26949), (41, 26961), (48, 27039), (58, 27099),

Gene: AngelCake_15 Start: 13698, Stop: 13997, Start Num: 21

Candidate Starts for AngelCake_15:

(Start: 18 @13647 has 240 MA's), (Start: 21 @13698 has 72 MA's), (23, 13710), (Start: 24 @13713 has 11 MA's), (26, 13722), (31, 13743), (53, 13938),

Gene: Annihilator_30 Start: 26781, Stop: 27101, Start Num: 19

Candidate Starts for Annihilator_30:

(Start: 19 @26781 has 54 MA's), (Start: 24 @26844 has 11 MA's), (Start: 27 @26856 has 2 MA's), (Start: 29 @26862 has 1 MA's), (30, 26871), (33, 26886), (35, 26907), (36, 26910), (38, 26925), (40, 26940), (41, 26952), (48, 27030), (58, 27090),

Gene: Antihero_15 Start: 14361, Stop: 14681, Start Num: 21

Candidate Starts for Antihero_15:

(1, 13947), (Start: 18 @14310 has 240 MA's), (Start: 21 @14361 has 72 MA's), (23, 14373), (26, 14385), (30, 14403), (37, 14448), (46, 14559),

Gene: Antonia_15 Start: 13209, Stop: 13559, Start Num: 18

Candidate Starts for Antonia_15:

(Start: 18 @13209 has 240 MA's), (Start: 21 @13260 has 72 MA's), (23, 13272), (Start: 24 @13275 has 11 MA's), (26, 13284), (31, 13305), (53, 13500),

Gene: Antsirabe_30 Start: 28475, Stop: 28837, Start Num: 19

Candidate Starts for Antsirabe_30:

(15, 28415), (Start: 19 @28475 has 54 MA's), (28, 28553), (33, 28580), (35, 28601), (36, 28604), (43, 28691),

Gene: Apizium_15 Start: 13430, Stop: 13729, Start Num: 21

Candidate Starts for Apizium_15:

(Start: 18 @13379 has 240 MA's), (Start: 21 @13430 has 72 MA's), (23, 13442), (Start: 24 @13445 has 11 MA's), (26, 13454), (31, 13475), (53, 13670),

Gene: Aroostook_30 Start: 26790, Stop: 27110, Start Num: 19

Candidate Starts for Aroostook_30:

(Start: 19 @26790 has 54 MA's), (Start: 24 @26853 has 11 MA's), (Start: 27 @26865 has 2 MA's), (Start: 29 @26871 has 1 MA's), (30, 26880), (33, 26895), (35, 26916), (36, 26919), (38, 26934), (40, 26949), (41, 26961), (48, 27039), (58, 27099),

Gene: Ashraf_15 Start: 13248, Stop: 13547, Start Num: 21

Candidate Starts for Ashraf_15:

(Start: 18 @13197 has 240 MA's), (Start: 21 @13248 has 72 MA's), (23, 13260), (Start: 24 @13263 has 11 MA's), (26, 13272), (31, 13293), (53, 13488),

Gene: Austelle_17 Start: 16011, Stop: 16382, Start Num: 18

Candidate Starts for Austelle_17:

(Start: 18 @16011 has 240 MA's), (Start: 21 @16062 has 72 MA's), (23, 16074), (Start: 24 @16077 has 11 MA's), (26, 16086), (30, 16104), (46, 16260),

Gene: Avocado_29 Start: 28477, Stop: 28833, Start Num: 19

Candidate Starts for Avocado_29:

(8, 28282), (Start: 19 @28477 has 54 MA's), (22, 28528), (28, 28555), (30, 28567), (35, 28603), (36, 28606), (43, 28693), (47, 28729), (50, 28753),

Gene: Avrafan_30 Start: 26790, Stop: 27110, Start Num: 19

Candidate Starts for Avrafan_30:

(Start: 19 @26790 has 54 MA's), (Start: 24 @26853 has 11 MA's), (Start: 27 @26865 has 2 MA's), (Start: 29 @26871 has 1 MA's), (30, 26880), (33, 26895), (35, 26916), (36, 26919), (38, 26934), (40, 26949), (41, 26961), (48, 27039), (58, 27099),

Gene: AzulaCat_30 Start: 26865, Stop: 27110, Start Num: 27

Candidate Starts for AzulaCat_30:

(Start: 19 @26790 has 54 MA's), (Start: 24 @26853 has 11 MA's), (Start: 27 @26865 has 2 MA's), (Start: 29 @26871 has 1 MA's), (30, 26880), (33, 26895), (35, 26916), (36, 26919), (38, 26934), (40, 26949), (41, 26961), (48, 27039), (58, 27099),

Gene: BPs_30 Start: 26790, Stop: 27110, Start Num: 19

Candidate Starts for BPs_30:

(Start: 19 @26790 has 54 MA's), (Start: 24 @26853 has 11 MA's), (Start: 27 @26865 has 2 MA's), (Start: 29 @26871 has 1 MA's), (30, 26880), (33, 26895), (35, 26916), (36, 26919), (38, 26934), (40, 26949), (41, 26961), (48, 27039), (58, 27099),

Gene: BQuat_30 Start: 26781, Stop: 27101, Start Num: 19

Candidate Starts for BQuat_30:

(Start: 19 @26781 has 54 MA's), (Start: 24 @26844 has 11 MA's), (Start: 27 @26856 has 2 MA's), (Start: 29 @26862 has 1 MA's), (30, 26871), (33, 26886), (35, 26907), (36, 26910), (38, 26925), (40, 26940), (41, 26952), (48, 27030), (58, 27090),

Gene: Badfish_16 Start: 13719, Stop: 14018, Start Num: 21

Candidate Starts for Badfish_16:

(Start: 18 @13668 has 240 MA's), (Start: 21 @13719 has 72 MA's), (23, 13731), (Start: 24 @13734 has 11 MA's), (26, 13743), (31, 13764), (53, 13959),

Gene: Banjo_15 Start: 13397, Stop: 13696, Start Num: 21

Candidate Starts for Banjo_15:

(Start: 18 @13346 has 240 MA's), (Start: 21 @13397 has 72 MA's), (23, 13409), (Start: 24 @13412 has 11 MA's), (26, 13421), (31, 13442), (53, 13637),

Gene: Barkley26_30 Start: 26875, Stop: 27132, Start Num: 24

Candidate Starts for Barkley26_30:

(Start: 19 @26812 has 54 MA's), (Start: 24 @26875 has 11 MA's), (Start: 27 @26887 has 2 MA's), (Start: 29 @26893 has 1 MA's), (30, 26902), (33, 26917), (35, 26938), (36, 26941), (38, 26956), (40, 26971), (41, 26983), (48, 27061), (58, 27121),

Gene: Basato_17 Start: 13923, Stop: 14222, Start Num: 21

Candidate Starts for Basato_17:

(Start: 18 @13872 has 240 MA's), (Start: 21 @13923 has 72 MA's), (Start: 24 @13938 has 11 MA's), (26, 13947), (31, 13968), (53, 14163),

Gene: BatteryCK_15 Start: 13254, Stop: 13553, Start Num: 21

Candidate Starts for BatteryCK_15:

(Start: 18 @13203 has 240 MA's), (Start: 21 @13254 has 72 MA's), (23, 13266), (Start: 24 @13269 has 11 MA's), (26, 13278), (31, 13299), (53, 13494),

Gene: Beaglebox_15 Start: 13363, Stop: 13713, Start Num: 18

Candidate Starts for Beaglebox_15:

(Start: 18 @13363 has 240 MA's), (Start: 21 @13414 has 72 MA's), (23, 13426), (Start: 24 @13429 has 11 MA's), (26, 13438), (31, 13459), (53, 13654),

Gene: Bishoperium_15 Start: 13352, Stop: 13702, Start Num: 18

Candidate Starts for Bishoperium_15:

(Start: 18 @13352 has 240 MA's), (Start: 21 @13403 has 72 MA's), (23, 13415), (Start: 24 @13418 has 11 MA's), (26, 13427), (31, 13448), (53, 13643),

Gene: BlackStallion_16 Start: 13654, Stop: 14004, Start Num: 18

Candidate Starts for BlackStallion_16:

(Start: 18 @13654 has 240 MA's), (Start: 21 @13705 has 72 MA's), (23, 13717), (Start: 24 @13720 has 11 MA's), (26, 13729), (31, 13750), (53, 13945),

Gene: BlueHusk_16 Start: 13635, Stop: 13985, Start Num: 18

Candidate Starts for BlueHusk_16:

(Start: 18 @13635 has 240 MA's), (Start: 21 @13686 has 72 MA's), (Start: 24 @13701 has 11 MA's), (26, 13710), (31, 13731), (53, 13926),

Gene: Bluephacebaby_15 Start: 13352, Stop: 13702, Start Num: 18

Candidate Starts for Bluephacebaby_15:

(Start: 18 @13352 has 240 MA's), (Start: 21 @13403 has 72 MA's), (23, 13415), (Start: 24 @13418 has 11 MA's), (26, 13427), (31, 13448), (53, 13643),

Gene: Boehler_16 Start: 13662, Stop: 14012, Start Num: 18

Candidate Starts for Boehler_16:

(Start: 18 @13662 has 240 MA's), (Start: 21 @13713 has 72 MA's), (23, 13725), (Start: 24 @13728 has 11 MA's), (26, 13737), (31, 13758), (53, 13953),

Gene: Brilliant_16 Start: 13356, Stop: 13706, Start Num: 18

Candidate Starts for Brilliant_16:

(Start: 18 @13356 has 240 MA's), (Start: 21 @13407 has 72 MA's), (23, 13419), (Start: 24 @13422 has 11 MA's), (26, 13431), (31, 13452), (53, 13647),

Gene: BrownCNA_17 Start: 15628, Stop: 15999, Start Num: 18

Candidate Starts for BrownCNA_17:

(Start: 18 @15628 has 240 MA's), (Start: 21 @15679 has 72 MA's), (23, 15691), (Start: 24 @15694 has 11 MA's), (26, 15703), (30, 15721), (46, 15877),

Gene: BruceB_30 Start: 26790, Stop: 27110, Start Num: 19

Candidate Starts for BruceB_30:

(Start: 19 @26790 has 54 MA's), (Start: 24 @26853 has 11 MA's), (Start: 27 @26865 has 2 MA's), (Start: 29 @26871 has 1 MA's), (30, 26880), (33, 26895), (35, 26916), (36, 26919), (38, 26934), (40, 26949), (41, 26961), (48, 27039), (58, 27099),

Gene: Buckeye_16 Start: 13670, Stop: 14020, Start Num: 18

Candidate Starts for Buckeye_16:

(Start: 18 @13670 has 240 MA's), (Start: 21 @13721 has 72 MA's), (23, 13733), (Start: 24 @13736 has 11 MA's), (26, 13745), (31, 13766), (53, 13961),

Gene: Burr_15 Start: 13352, Stop: 13702, Start Num: 18

Candidate Starts for Burr_15:

(Start: 18 @13352 has 240 MA's), (Start: 21 @13403 has 72 MA's), (23, 13415), (Start: 24 @13418 has 11 MA's), (26, 13427), (31, 13448), (53, 13643),

Gene: CLED96_30 Start: 26871, Stop: 27110, Start Num: 29

Candidate Starts for CLED96_30:

(Start: 19 @26790 has 54 MA's), (Start: 24 @26853 has 11 MA's), (Start: 27 @26865 has 2 MA's), (Start: 29 @26871 has 1 MA's), (30, 26880), (33, 26895), (35, 26916), (36, 26919), (38, 26934), (40, 26949), (41, 26961), (48, 27039), (58, 27099),

Gene: CamL_16 Start: 13650, Stop: 14000, Start Num: 18

Candidate Starts for CamL_16:

(Start: 18 @13650 has 240 MA's), (Start: 21 @13701 has 72 MA's), (23, 13713), (Start: 24 @13716 has 11 MA's), (26, 13725), (31, 13746), (53, 13941),

Gene: Cambiare_30 Start: 28945, Stop: 29301, Start Num: 19

Candidate Starts for Cambiare_30:

(4, 28708), (Start: 19 @28945 has 54 MA's), (22, 28996), (28, 29023), (30, 29035), (35, 29071), (36, 29074), (43, 29161), (47, 29197), (50, 29221),

Gene: CampRoach_16 Start: 13641, Stop: 13991, Start Num: 18

Candidate Starts for CampRoach_16:

(Start: 18 @13641 has 240 MA's), (Start: 21 @13692 has 72 MA's), (23, 13704), (Start: 24 @13707 has 11 MA's), (26, 13716), (31, 13737), (53, 13932),

Gene: Camri_30 Start: 26853, Stop: 27110, Start Num: 24

Candidate Starts for Camri_30:

(Start: 19 @26790 has 54 MA's), (Start: 24 @26853 has 11 MA's), (Start: 27 @26865 has 2 MA's), (Start: 29 @26871 has 1 MA's), (30, 26880), (33, 26895), (35, 26916), (36, 26919), (38, 26934), (40, 26949), (41, 26961), (48, 27039), (58, 27099),

Gene: Cannibal_16 Start: 13635, Stop: 13985, Start Num: 18

Candidate Starts for Cannibal_16:

(Start: 18 @13635 has 240 MA's), (Start: 21 @13686 has 72 MA's), (23, 13698), (Start: 24 @13701 has 11 MA's), (26, 13710), (31, 13731), (53, 13926),

Gene: Carthage_15 Start: 13313, Stop: 13663, Start Num: 18

Candidate Starts for Carthage_15:

(Start: 18 @13313 has 240 MA's), (Start: 21 @13364 has 72 MA's), (23, 13376), (Start: 24 @13379 has 11 MA's), (26, 13388), (31, 13409), (37, 13451), (53, 13604),

Gene: Caspiboi_17 Start: 13408, Stop: 13707, Start Num: 21

Candidate Starts for Caspiboi_17:

(Start: 18 @13357 has 240 MA's), (Start: 21 @13408 has 72 MA's), (23, 13420), (Start: 24 @13423 has 11 MA's), (26, 13432), (31, 13453), (53, 13648),

Gene: CassieYates_30 Start: 26790, Stop: 27110, Start Num: 19

Candidate Starts for CassieYates_30:

(Start: 19 @26790 has 54 MA's), (Start: 24 @26853 has 11 MA's), (Start: 27 @26865 has 2 MA's), (Start: 29 @26871 has 1 MA's), (30, 26880), (33, 26895), (35, 26916), (36, 26919), (38, 26934), (40, 26949), (41, 26961), (48, 27039), (58, 27099),

Gene: Cedasite_30 Start: 26853, Stop: 27110, Start Num: 24

Candidate Starts for Cedasite_30:

(Start: 19 @26790 has 54 MA's), (Start: 24 @26853 has 11 MA's), (Start: 27 @26865 has 2 MA's), (Start: 29 @26871 has 1 MA's), (30, 26880), (33, 26895), (35, 26916), (36, 26919), (38, 26934), (40, 26949), (41, 26961), (48, 27039), (58, 27099),

Gene: Chaelin_15 Start: 13317, Stop: 13667, Start Num: 18

Candidate Starts for Chaelin_15:

(Start: 18 @13317 has 240 MA's), (Start: 21 @13368 has 72 MA's), (23, 13380), (Start: 24 @13383 has 11 MA's), (26, 13392), (31, 13413), (53, 13608),

Gene: Chah_16 Start: 13720, Stop: 14019, Start Num: 21

Candidate Starts for Chah_16:

(Start: 18 @13669 has 240 MA's), (Start: 21 @13720 has 72 MA's), (23, 13732), (Start: 24 @13735 has 11 MA's), (26, 13744), (31, 13765), (53, 13960),

Gene: Chance64_30 Start: 26790, Stop: 27110, Start Num: 19

Candidate Starts for Chance64_30:

(Start: 19 @26790 has 54 MA's), (Start: 24 @26853 has 11 MA's), (Start: 27 @26865 has 2 MA's), (Start: 29 @26871 has 1 MA's), (30, 26880), (33, 26895), (35, 26916), (36, 26919), (38, 26934), (40, 26949), (41, 26961), (48, 27039), (58, 27099),

Gene: Charles1_16 Start: 13632, Stop: 13982, Start Num: 18

Candidate Starts for Charles1_16:

(Start: 18 @13632 has 240 MA's), (Start: 21 @13683 has 72 MA's), (23, 13695), (Start: 24 @13698 has 11 MA's), (26, 13707), (31, 13728), (53, 13923),

Gene: CharlieGBrown_15 Start: 13221, Stop: 13571, Start Num: 18

Candidate Starts for CharlieGBrown_15:

(Start: 18 @13221 has 240 MA's), (Start: 21 @13272 has 72 MA's), (23, 13284), (Start: 24 @13287 has 11 MA's), (26, 13296), (31, 13317), (53, 13512),

Gene: CheetO_16 Start: 13650, Stop: 14000, Start Num: 18

Candidate Starts for CheetO_16:

(Start: 18 @13650 has 240 MA's), (Start: 21 @13701 has 72 MA's), (23, 13713), (Start: 24 @13716 has 11 MA's), (26, 13725), (31, 13746), (53, 13941),

Gene: Cher_15 Start: 13375, Stop: 13725, Start Num: 18

Candidate Starts for Cher_15:

(Start: 18 @13375 has 240 MA's), (Start: 21 @13426 has 72 MA's), (23, 13438), (Start: 24 @13441 has 11 MA's), (26, 13450), (31, 13471), (53, 13666),

Gene: Cherrybomb426_30 Start: 26790, Stop: 27110, Start Num: 19

Candidate Starts for Cherrybomb426_30:

(Start: 19 @26790 has 54 MA's), (Start: 24 @26853 has 11 MA's), (Start: 27 @26865 has 2 MA's), (Start: 29 @26871 has 1 MA's), (30, 26880), (33, 26895), (35, 26916), (36, 26919), (38, 26934), (40, 26949), (41, 26961), (48, 27039), (58, 27099),

Gene: Childish_15 Start: 13363, Stop: 13713, Start Num: 18

Candidate Starts for Childish_15:

(Start: 18 @13363 has 240 MA's), (Start: 21 @13414 has 72 MA's), (23, 13426), (Start: 24 @13429 has 11 MA's), (26, 13438), (31, 13459), (53, 13654),

Gene: Chorkpop_16 Start: 13375, Stop: 13725, Start Num: 18

Candidate Starts for Chorkpop_16:

(Start: 18 @13375 has 240 MA's), (Start: 21 @13426 has 72 MA's), (23, 13438), (Start: 24 @13441 has 11 MA's), (26, 13450), (31, 13471), (53, 13666),

Gene: ChrisnMich_15 Start: 14361, Stop: 14681, Start Num: 21

Candidate Starts for ChrisnMich_15:

(1, 13947), (Start: 18 @14310 has 240 MA's), (Start: 21 @14361 has 72 MA's), (23, 14373), (26, 14385), (30, 14403), (37, 14448), (46, 14559),

Gene: Chunky_16 Start: 13662, Stop: 14012, Start Num: 18

Candidate Starts for Chunky_16:

(Start: 18 @13662 has 240 MA's), (Start: 21 @13713 has 72 MA's), (Start: 24 @13728 has 11 MA's), (26, 13737), (31, 13758), (53, 13953),

Gene: Chute_15 Start: 13716, Stop: 14015, Start Num: 21

Candidate Starts for Chute_15:

(Start: 18 @13665 has 240 MA's), (Start: 21 @13716 has 72 MA's), (23, 13728), (Start: 24 @13731 has 11 MA's), (26, 13740), (31, 13761), (53, 13956),

Gene: Cobra_16 Start: 13653, Stop: 14003, Start Num: 18

Candidate Starts for Cobra_16:

(Start: 18 @13653 has 240 MA's), (Start: 21 @13704 has 72 MA's), (23, 13716), (Start: 24 @13719 has 11 MA's), (26, 13728), (31, 13749), (53, 13944),

Gene: Colbert_16 Start: 13704, Stop: 14003, Start Num: 21

Candidate Starts for Colbert_16:

(Start: 18 @13653 has 240 MA's), (Start: 21 @13704 has 72 MA's), (23, 13716), (Start: 24 @13719 has 11 MA's), (26, 13728), (31, 13749), (53, 13944),

Gene: Coleslaw_30 Start: 26781, Stop: 27101, Start Num: 19

Candidate Starts for Coleslaw_30:

(Start: 19 @26781 has 54 MA's), (Start: 24 @26844 has 11 MA's), (Start: 27 @26856 has 2 MA's), (Start: 29 @26862 has 1 MA's), (30, 26871), (33, 26886), (35, 26907), (36, 26910), (38, 26925), (40, 26940), (41, 26952), (48, 27030), (58, 27090),

Gene: Coletti_15 Start: 13716, Stop: 14015, Start Num: 21

Candidate Starts for Coletti_15:

(Start: 18 @13665 has 240 MA's), (Start: 21 @13716 has 72 MA's), (23, 13728), (Start: 24 @13731 has 11 MA's), (26, 13740), (31, 13761), (53, 13956),

Gene: Cornobble_15 Start: 13210, Stop: 13560, Start Num: 18

Candidate Starts for Cornobble_15:

(Start: 18 @13210 has 240 MA's), (Start: 21 @13261 has 72 MA's), (23, 13273), (Start: 24 @13276 has 11 MA's), (26, 13285), (31, 13306), (53, 13501),

Gene: Cosmolli16_15 Start: 13367, Stop: 13717, Start Num: 18

Candidate Starts for Cosmolli16_15:

(Start: 18 @13367 has 240 MA's), (Start: 21 @13418 has 72 MA's), (23, 13430), (Start: 24 @13433 has 11 MA's), (26, 13442), (31, 13463), (53, 13658),

Gene: Craff_16 Start: 13656, Stop: 14006, Start Num: 18

Candidate Starts for Craff_16:

(Start: 18 @13656 has 240 MA's), (Start: 21 @13707 has 72 MA's), (23, 13719), (Start: 24 @13722 has 11 MA's), (26, 13731), (31, 13752), (53, 13947),

Gene: Crespo_30 Start: 26866, Stop: 27111, Start Num: 27

Candidate Starts for Crespo_30:

(Start: 19 @26791 has 54 MA's), (Start: 24 @26854 has 11 MA's), (Start: 27 @26866 has 2 MA's), (Start: 29 @26872 has 1 MA's), (30, 26881), (33, 26896), (35, 26917), (36, 26920), (38, 26935), (40, 26950), (41, 26962), (48, 27040), (58, 27100),

Gene: Crownjwl_16 Start: 13423, Stop: 13773, Start Num: 18

Candidate Starts for Crownjwl_16:

(Start: 18 @13423 has 240 MA's), (Start: 21 @13474 has 72 MA's), (Start: 24 @13489 has 11 MA's), (26, 13498), (31, 13519), (53, 13714),

Gene: DMoney_30 Start: 26790, Stop: 27110, Start Num: 19

Candidate Starts for DMoney_30:

(Start: 19 @26790 has 54 MA's), (Start: 24 @26853 has 11 MA's), (Start: 27 @26865 has 2 MA's), (Start: 29 @26871 has 1 MA's), (30, 26880), (33, 26895), (35, 26916), (36, 26919), (38, 26934), (40, 26949), (41, 26961), (48, 27039), (58, 27099),

Gene: DNAIII_0030 Start: 26604, Stop: 26861, Start Num: 24

Candidate Starts for DNAIII_0030:

(Start: 19 @26541 has 54 MA's), (Start: 24 @26604 has 11 MA's), (Start: 27 @26616 has 2 MA's), (Start: 29 @26622 has 1 MA's), (30, 26631), (33, 26646), (35, 26667), (36, 26670), (38, 26685), (40, 26700), (41, 26712), (48, 26790), (58, 26850),

Gene: DaddyDaniels_16 Start: 13359, Stop: 13709, Start Num: 18

Candidate Starts for DaddyDaniels_16:

(Start: 18 @13359 has 240 MA's), (Start: 21 @13410 has 72 MA's), (23, 13422), (Start: 24 @13425 has 11 MA's), (26, 13434), (31, 13455), (53, 13650),

Gene: Daegal_36 Start: 30310, Stop: 30630, Start Num: 18

Candidate Starts for Daegal_36:

(Start: 18 @30310 has 240 MA's), (Start: 27 @30388 has 2 MA's), (30, 30403), (32, 30415), (35, 30445), (37, 30454), (41, 30490), (45, 30523), (52, 30577),

Gene: Daffy_16 Start: 13426, Stop: 13725, Start Num: 21

Candidate Starts for Daffy_16:

(Start: 18 @13375 has 240 MA's), (Start: 21 @13426 has 72 MA's), (23, 13438), (Start: 24 @13441 has 11 MA's), (26, 13450), (31, 13471), (53, 13666),

Gene: Daka_16 Start: 13653, Stop: 14003, Start Num: 18

Candidate Starts for Daka_16:

(Start: 18 @13653 has 240 MA's), (Start: 21 @13704 has 72 MA's), (23, 13716), (Start: 24 @13719 has 11 MA's), (26, 13728), (31, 13749), (53, 13944),

Gene: Darionha_30 Start: 26790, Stop: 27110, Start Num: 19

Candidate Starts for Darionha_30:

(Start: 19 @26790 has 54 MA's), (Start: 24 @26853 has 11 MA's), (Start: 27 @26865 has 2 MA's), (Start: 29 @26871 has 1 MA's), (30, 26880), (33, 26895), (35, 26916), (36, 26919), (38, 26934), (40, 26949), (41, 26961), (48, 27039), (58, 27099),

Gene: Dati_16 Start: 13363, Stop: 13713, Start Num: 18

Candidate Starts for Dati_16:

(Start: 18 @13363 has 240 MA's), (Start: 21 @13414 has 72 MA's), (23, 13426), (Start: 24 @13429 has 11 MA's), (26, 13438), (31, 13459), (53, 13654),

Gene: DeepSoil15_35 Start: 30016, Stop: 30336, Start Num: 18

Candidate Starts for DeepSoil15_35:

(Start: 18 @30016 has 240 MA's), (Start: 27 @30094 has 2 MA's), (30, 30109), (32, 30121), (35, 30151), (37, 30160), (41, 30196), (45, 30229), (52, 30283),

Gene: DelRivs_15 Start: 13413, Stop: 13712, Start Num: 21

Candidate Starts for DelRivs_15:

(Start: 18 @13362 has 240 MA's), (Start: 21 @13413 has 72 MA's), (23, 13425), (Start: 24 @13428 has 11 MA's), (26, 13437), (31, 13458), (53, 13653),

Gene: Derpp_15 Start: 13209, Stop: 13559, Start Num: 18

Candidate Starts for Derpp_15:

(Start: 18 @13209 has 240 MA's), (Start: 21 @13260 has 72 MA's), (23, 13272), (Start: 24 @13275 has 11 MA's), (26, 13284), (31, 13305), (53, 13500),

Gene: Dewey_34 Start: 30016, Stop: 30336, Start Num: 18

Candidate Starts for Dewey_34:

(Start: 18 @30016 has 240 MA's), (Start: 27 @30094 has 2 MA's), (30, 30109), (32, 30121), (35, 30151), (37, 30160), (41, 30196), (45, 30229), (52, 30283),

Gene: Dice_15 Start: 13350, Stop: 13700, Start Num: 18

Candidate Starts for Dice_15:

(Start: 18 @13350 has 240 MA's), (Start: 21 @13401 has 72 MA's), (23, 13413), (Start: 24 @13416 has 11 MA's), (26, 13425), (31, 13446), (53, 13641),

Gene: Dingo_16 Start: 13635, Stop: 13985, Start Num: 18

Candidate Starts for Dingo_16:

(Start: 18 @13635 has 240 MA's), (Start: 21 @13686 has 72 MA's), (Start: 24 @13701 has 11 MA's), (26, 13710), (31, 13731), (53, 13926),

Gene: Dione_15 Start: 13351, Stop: 13701, Start Num: 18

Candidate Starts for Dione_15:

(Start: 18 @13351 has 240 MA's), (Start: 21 @13402 has 72 MA's), (23, 13414), (Start: 24 @13417 has 11 MA's), (26, 13426), (31, 13447), (53, 13642),

Gene: DirtJuice_16 Start: 13638, Stop: 13988, Start Num: 18

Candidate Starts for DirtJuice_16:

(Start: 18 @13638 has 240 MA's), (Start: 21 @13689 has 72 MA's), (Start: 24 @13704 has 11 MA's), (26, 13713), (31, 13734), (53, 13929),

Gene: Doddsville_16 Start: 13414, Stop: 13713, Start Num: 21

Candidate Starts for Doddsville_16:

(Start: 18 @13363 has 240 MA's), (Start: 21 @13414 has 72 MA's), (23, 13426), (Start: 24 @13429 has 11 MA's), (26, 13438), (31, 13459), (53, 13654),

Gene: DoesntMatter_16 Start: 13632, Stop: 13982, Start Num: 18

Candidate Starts for DoesntMatter_16:

(Start: 18 @13632 has 240 MA's), (Start: 21 @13683 has 72 MA's), (23, 13695), (Start: 24 @13698 has 11 MA's), (26, 13707), (31, 13728), (53, 13923),

Gene: DonSanchon_15 Start: 13351, Stop: 13701, Start Num: 18

Candidate Starts for DonSanchon_15:

(Start: 18 @13351 has 240 MA's), (Start: 21 @13402 has 72 MA's), (23, 13414), (Start: 24 @13417 has 11 MA's), (26, 13426), (31, 13447), (53, 13642),

Gene: DuchessDung_15 Start: 13254, Stop: 13553, Start Num: 21

Candidate Starts for DuchessDung_15:

(Start: 18 @13203 has 240 MA's), (Start: 21 @13254 has 72 MA's), (23, 13266), (Start: 24 @13269 has 11 MA's), (26, 13278), (31, 13299), (53, 13494),

Gene: Duggie_15 Start: 13365, Stop: 13715, Start Num: 18

Candidate Starts for Duggie_15:

(Start: 18 @13365 has 240 MA's), (Start: 21 @13416 has 72 MA's), (23, 13428), (Start: 24 @13431 has 11 MA's), (26, 13440), (31, 13461), (53, 13656),

Gene: Durga_16 Start: 13664, Stop: 14014, Start Num: 18

Candidate Starts for Durga_16:

(Start: 18 @13664 has 240 MA's), (Start: 21 @13715 has 72 MA's), (23, 13727), (Start: 24 @13730 has 11 MA's), (26, 13739), (31, 13760), (53, 13955),

Gene: ECartman_30 Start: 26790, Stop: 27110, Start Num: 19

Candidate Starts for ECartman_30:

(Start: 19 @26790 has 54 MA's), (Start: 24 @26853 has 11 MA's), (Start: 27 @26865 has 2 MA's), (Start: 29 @26871 has 1 MA's), (30, 26880), (33, 26895), (35, 26916), (36, 26919), (38, 26934), (40, 26949), (41, 26961), (48, 27039), (58, 27099),

Gene: Ein37_35 Start: 30016, Stop: 30336, Start Num: 18

Candidate Starts for Ein37_35:

(Start: 18 @30016 has 240 MA's), (Start: 27 @30094 has 2 MA's), (30, 30109), (32, 30121), (35, 30151), (37, 30160), (41, 30196), (45, 30229), (52, 30283),

Gene: ElvisPhasley_16 Start: 13714, Stop: 14013, Start Num: 21

Candidate Starts for ElvisPhasley_16:

(Start: 18 @13663 has 240 MA's), (Start: 21 @13714 has 72 MA's), (23, 13726), (Start: 24 @13729 has 11 MA's), (26, 13738), (31, 13759), (53, 13954),

Gene: Emiris_16 Start: 13645, Stop: 13995, Start Num: 18

Candidate Starts for Emiris_16:

(Start: 18 @13645 has 240 MA's), (Start: 21 @13696 has 72 MA's), (23, 13708), (Start: 24 @13711 has 11 MA's), (26, 13720), (31, 13741), (53, 13936),

Gene: EmpTee_16 Start: 13651, Stop: 14001, Start Num: 18

Candidate Starts for EmpTee_16:

(Start: 18 @13651 has 240 MA's), (Start: 21 @13702 has 72 MA's), (23, 13714), (Start: 24 @13717 has 11 MA's), (26, 13726), (31, 13747), (53, 13942),

Gene: Epah_15 Start: 14361, Stop: 14681, Start Num: 21

Candidate Starts for Epah_15:

(1, 13947), (Start: 18 @14310 has 240 MA's), (Start: 21 @14361 has 72 MA's), (23, 14373), (26, 14385), (30, 14403), (37, 14448), (46, 14559),

Gene: Eremos_16 Start: 13701, Stop: 14000, Start Num: 21

Candidate Starts for Eremos_16:

(Start: 18 @13650 has 240 MA's), (Start: 21 @13701 has 72 MA's), (23, 13713), (Start: 24 @13716 has 11 MA's), (26, 13725), (31, 13746), (53, 13941),

Gene: Etaye_16 Start: 13686, Stop: 13985, Start Num: 21

Candidate Starts for Etaye_16:

(Start: 18 @13635 has 240 MA's), (Start: 21 @13686 has 72 MA's), (23, 13698), (Start: 24 @13701 has 11 MA's), (26, 13710), (31, 13731), (53, 13926),

Gene: Eugenia_16 Start: 13714, Stop: 14013, Start Num: 21

Candidate Starts for Eugenia_16:

(Start: 18 @13663 has 240 MA's), (Start: 21 @13714 has 72 MA's), (23, 13726), (Start: 24 @13729 has 11 MA's), (26, 13738), (31, 13759), (53, 13954),

Gene: Evanesce_34 Start: 30016, Stop: 30336, Start Num: 18

Candidate Starts for Evanesce_34:

(Start: 18 @30016 has 240 MA's), (Start: 27 @30094 has 2 MA's), (30, 30109), (32, 30121), (35, 30151), (37, 30160), (41, 30196), (45, 30229), (52, 30283),

Gene: Fang_16 Start: 13717, Stop: 14016, Start Num: 21

Candidate Starts for Fang_16:

(Start: 18 @13666 has 240 MA's), (Start: 21 @13717 has 72 MA's), (23, 13729), (Start: 24 @13732 has 11 MA's), (26, 13741), (31, 13762), (53, 13957),

Gene: FlagStaff_29 Start: 28264, Stop: 28620, Start Num: 19

Candidate Starts for FlagStaff_29:

(Start: 19 @28264 has 54 MA's), (28, 28342), (30, 28354), (35, 28390), (36, 28393), (43, 28480), (47, 28516), (50, 28540), (59, 28597),

Gene: FluffyNinja_16 Start: 13705, Stop: 14004, Start Num: 21

Candidate Starts for FluffyNinja_16:

(Start: 18 @13654 has 240 MA's), (Start: 21 @13705 has 72 MA's), (23, 13717), (Start: 24 @13720 has 11 MA's), (26, 13729), (31, 13750), (53, 13945),

Gene: Forge_34 Start: 30016, Stop: 30336, Start Num: 18

Candidate Starts for Forge_34:

(Start: 18 @30016 has 240 MA's), (Start: 27 @30094 has 2 MA's), (30, 30109), (32, 30121), (35, 30151), (37, 30160), (41, 30196), (45, 30229), (52, 30283),

Gene: Fortunato_16 Start: 15368, Stop: 15739, Start Num: 18

Candidate Starts for Fortunato_16:

(Start: 18 @15368 has 240 MA's), (Start: 21 @15419 has 72 MA's), (23, 15431), (Start: 24 @15434 has 11 MA's), (26, 15443), (30, 15461), (46, 15617),

Gene: Fozzie_15 Start: 13660, Stop: 14010, Start Num: 18

Candidate Starts for Fozzie_15:

(Start: 18 @13660 has 240 MA's), (Start: 21 @13711 has 72 MA's), (23, 13723), (Start: 24 @13726 has 11 MA's), (26, 13735), (31, 13756), (53, 13951),

Gene: Frankicide_16 Start: 13652, Stop: 14002, Start Num: 18

Candidate Starts for Frankicide_16:

(Start: 18 @13652 has 240 MA's), (Start: 21 @13703 has 72 MA's), (23, 13715), (Start: 24 @13718 has 11 MA's), (26, 13727), (31, 13748), (53, 13943),

Gene: Frederick_16 Start: 15377, Stop: 15748, Start Num: 18

Candidate Starts for Frederick_16:

(Start: 18 @15377 has 240 MA's), (Start: 21 @15428 has 72 MA's), (23, 15440), (Start: 24 @15443 has 11 MA's), (26, 15452), (30, 15470), (46, 15626),

Gene: Freya_15 Start: 13346, Stop: 13696, Start Num: 18

Candidate Starts for Freya_15:

(Start: 18 @13346 has 240 MA's), (Start: 21 @13397 has 72 MA's), (23, 13409), (Start: 24 @13412 has 11 MA's), (26, 13421), (31, 13442), (53, 13637),

Gene: FriarPreacher_16 Start: 13671, Stop: 14021, Start Num: 18

Candidate Starts for FriarPreacher_16:

(Start: 18 @13671 has 240 MA's), (Start: 21 @13722 has 72 MA's), (23, 13734), (Start: 24 @13737 has 11 MA's), (26, 13746), (31, 13767), (53, 13962),

Gene: Fringe_16 Start: 13633, Stop: 13983, Start Num: 18

Candidate Starts for Fringe_16:

(Start: 18 @13633 has 240 MA's), (Start: 21 @13684 has 72 MA's), (23, 13696), (Start: 24 @13699 has 11 MA's), (26, 13708), (31, 13729), (53, 13924),

Gene: Frosty24_30 Start: 26790, Stop: 27110, Start Num: 19

Candidate Starts for Frosty24_30:

(Start: 19 @26790 has 54 MA's), (Start: 24 @26853 has 11 MA's), (Start: 27 @26865 has 2 MA's), (Start: 29 @26871 has 1 MA's), (30, 26880), (33, 26895), (35, 26916), (36, 26919), (38, 26934), (40, 26949), (41, 26961), (48, 27039), (58, 27099),

Gene: FugateOSU_15 Start: 13357, Stop: 13707, Start Num: 18

Candidate Starts for FugateOSU_15:

(Start: 18 @13357 has 240 MA's), (Start: 21 @13408 has 72 MA's), (23, 13420), (Start: 24 @13423 has 11 MA's), (26, 13432), (31, 13453), (53, 13648),

Gene: Funsized_20 Start: 17389, Stop: 17733, Start Num: 18

Candidate Starts for Funsized_20:

(Start: 18 @17389 has 240 MA's), (Start: 24 @17455 has 11 MA's), (Start: 29 @17473 has 1 MA's), (32, 17494), (62, 17713),

Gene: Gancho_34 Start: 29739, Stop: 30059, Start Num: 18

Candidate Starts for Gancho_34:

(Start: 18 @29739 has 240 MA's), (Start: 27 @29817 has 2 MA's), (30, 29832), (32, 29844), (35, 29874), (37, 29883), (41, 29919), (45, 29952), (52, 30006),

Gene: Gareth_15 Start: 13354, Stop: 13704, Start Num: 18

Candidate Starts for Gareth_15:

(Start: 18 @13354 has 240 MA's), (Start: 21 @13405 has 72 MA's), (23, 13417), (Start: 24 @13420 has 11 MA's), (26, 13429), (31, 13450), (53, 13645),

Gene: GeneCoco_16 Start: 13656, Stop: 14006, Start Num: 18

Candidate Starts for GeneCoco_16:

(Start: 18 @13656 has 240 MA's), (Start: 21 @13707 has 72 MA's), (23, 13719), (Start: 24 @13722 has 11 MA's), (26, 13731), (31, 13752), (53, 13947),

Gene: Gideon_30 Start: 26790, Stop: 27110, Start Num: 19

Candidate Starts for Gideon_30:

(Start: 19 @26790 has 54 MA's), (Start: 24 @26853 has 11 MA's), (Start: 27 @26865 has 2 MA's), (Start: 29 @26871 has 1 MA's), (30, 26880), (33, 26895), (35, 26916), (36, 26919), (38, 26934), (40, 26949), (41, 26961), (48, 27039), (58, 27099),

Gene: Giles_34 Start: 30016, Stop: 30336, Start Num: 18

Candidate Starts for Giles_34:

(Start: 18 @30016 has 240 MA's), (Start: 27 @30094 has 2 MA's), (30, 30109), (32, 30121), (35, 30151), (37, 30160), (41, 30196), (45, 30229), (52, 30283),

Gene: GinPorsche_15 Start: 14361, Stop: 14681, Start Num: 21

Candidate Starts for GinPorsche_15:

(1, 13947), (Start: 18 @14310 has 240 MA's), (Start: 21 @14361 has 72 MA's), (23, 14373), (26, 14385), (30, 14403), (37, 14448), (46, 14559),

Gene: Giraffe_16 Start: 13358, Stop: 13708, Start Num: 18

Candidate Starts for Giraffe_16:

(Start: 18 @13358 has 240 MA's), (Start: 21 @13409 has 72 MA's), (23, 13421), (Start: 24 @13424 has 11 MA's), (26, 13433), (31, 13454), (53, 13649),

Gene: GoldenAsh_30 Start: 26790, Stop: 27110, Start Num: 19

Candidate Starts for GoldenAsh_30:

(Start: 19 @26790 has 54 MA's), (Start: 24 @26853 has 11 MA's), (Start: 27 @26865 has 2 MA's), (Start: 29 @26871 has 1 MA's), (30, 26880), (33, 26895), (35, 26916), (36, 26919), (38, 26934), (40, 26949), (41, 26961), (48, 27039), (58, 27099),

Gene: Gomashi_30 Start: 26791, Stop: 27111, Start Num: 19

Candidate Starts for Gomashi_30:

(Start: 19 @26791 has 54 MA's), (Start: 24 @26854 has 11 MA's), (Start: 27 @26866 has 2 MA's), (Start: 29 @26872 has 1 MA's), (30, 26881), (33, 26896), (35, 26917), (36, 26920), (38, 26935), (40, 26950), (41, 26962), (48, 27040), (58, 27100),

Gene: Gophee_16 Start: 13686, Stop: 13985, Start Num: 21

Candidate Starts for Gophee_16:

(Start: 18 @13635 has 240 MA's), (Start: 21 @13686 has 72 MA's), (23, 13698), (Start: 24 @13701 has 11 MA's), (26, 13710), (31, 13731), (53, 13926),

Gene: Grand2040_15 Start: 13373, Stop: 13723, Start Num: 18

Candidate Starts for Grand2040_15:

(Start: 18 @13373 has 240 MA's), (Start: 21 @13424 has 72 MA's), (23, 13436), (Start: 24 @13439 has 11 MA's), (26, 13448), (31, 13469), (53, 13664),

Gene: Gravaillia_34 Start: 29745, Stop: 30065, Start Num: 18

Candidate Starts for Gravaillia_34:

(Start: 18 @29745 has 240 MA's), (Start: 27 @29823 has 2 MA's), (30, 29838), (32, 29850), (35, 29880), (37, 29889), (41, 29925), (45, 29958), (52, 30012),

Gene: Grizzly_30 Start: 26853, Stop: 27110, Start Num: 24

Candidate Starts for Grizzly_30:

(16, 26727), (Start: 19 @26790 has 54 MA's), (Start: 24 @26853 has 11 MA's), (Start: 27 @26865 has 2 MA's), (Start: 29 @26871 has 1 MA's), (30, 26880), (33, 26895), (35, 26916), (36, 26919), (40, 26949), (41, 26961), (48, 27039), (58, 27099),

Gene: Gwennie1_16 Start: 13725, Stop: 14024, Start Num: 21

Candidate Starts for Gwennie1_16:

(Start: 18 @13674 has 240 MA's), (Start: 21 @13725 has 72 MA's), (23, 13737), (Start: 24 @13740 has 11 MA's), (26, 13749), (31, 13770), (53, 13965),

Gene: Gwilliam_16 Start: 13698, Stop: 13997, Start Num: 21

Candidate Starts for Gwilliam_16:

(Start: 18 @13647 has 240 MA's), (Start: 21 @13698 has 72 MA's), (23, 13710), (Start: 24 @13713 has 11 MA's), (26, 13722), (31, 13743), (53, 13938),

Gene: Gyarad_0016 Start: 13650, Stop: 14000, Start Num: 18

Candidate Starts for Gyarad_0016:

(Start: 18 @13650 has 240 MA's), (Start: 21 @13701 has 72 MA's), (23, 13713), (Start: 24 @13716 has 11 MA's), (26, 13725), (31, 13746), (53, 13941),

Gene: HH92_34 Start: 30016, Stop: 30336, Start Num: 18

Candidate Starts for HH92_34:

(Start: 18 @30016 has 240 MA's), (Start: 27 @30094 has 2 MA's), (30, 30109), (32, 30121), (35, 30151), (37, 30160), (41, 30196), (45, 30229), (52, 30283),

Gene: HSavage_16 Start: 13658, Stop: 14008, Start Num: 18

Candidate Starts for HSavage_16:

(Start: 18 @13658 has 240 MA's), (Start: 21 @13709 has 72 MA's), (23, 13721), (Start: 24 @13724 has 11 MA's), (26, 13733), (31, 13754), (53, 13949),

Gene: Hadrien_35 Start: 30016, Stop: 30336, Start Num: 18

Candidate Starts for Hadrien_35:

(Start: 18 @30016 has 240 MA's), (Start: 27 @30094 has 2 MA's), (30, 30109), (32, 30121), (35, 30151), (37, 30160), (41, 30196), (45, 30229), (52, 30283),

Gene: Hail_34 Start: 30016, Stop: 30336, Start Num: 18

Candidate Starts for Hail_34:

(Start: 18 @30016 has 240 MA's), (Start: 27 @30094 has 2 MA's), (30, 30109), (32, 30121), (35, 30151), (37, 30160), (41, 30196), (45, 30229), (52, 30283),

Gene: Haimas_16 Start: 13650, Stop: 14000, Start Num: 18

Candidate Starts for Haimas_16:

(Start: 18 @13650 has 240 MA's), (Start: 21 @13701 has 72 MA's), (23, 13713), (Start: 24 @13716 has 11 MA's), (26, 13725), (31, 13746), (53, 13941),

Gene: Haleema_15 Start: 13375, Stop: 13725, Start Num: 18

Candidate Starts for Haleema_15:

(Start: 18 @13375 has 240 MA's), (Start: 21 @13426 has 72 MA's), (23, 13438), (Start: 24 @13441 has 11 MA's), (26, 13450), (31, 13471), (53, 13666),

Gene: Hally898_15 Start: 14361, Stop: 14681, Start Num: 21

Candidate Starts for Hally898_15:

(1, 13947), (Start: 18 @14310 has 240 MA's), (Start: 21 @14361 has 72 MA's), (23, 14373), (26, 14385), (30, 14403), (37, 14448), (46, 14559),

Gene: Halo_30 Start: 26785, Stop: 27105, Start Num: 19

Candidate Starts for Halo_30:

(Start: 19 @26785 has 54 MA's), (Start: 24 @26848 has 11 MA's), (Start: 27 @26860 has 2 MA's), (Start: 29 @26866 has 1 MA's), (30, 26875), (33, 26890), (35, 26911), (36, 26914), (38, 26929), (40, 26944), (41, 26956), (48, 27034), (58, 27094),

Gene: Hamish_16 Start: 13695, Stop: 13994, Start Num: 21

Candidate Starts for Hamish_16:

(Start: 18 @13644 has 240 MA's), (Start: 21 @13695 has 72 MA's), (23, 13707), (Start: 24 @13710 has 11 MA's), (26, 13719), (31, 13740), (53, 13935),

Gene: Hangman_16 Start: 15377, Stop: 15748, Start Num: 18

Candidate Starts for Hangman_16:

(Start: 18 @15377 has 240 MA's), (Start: 21 @15428 has 72 MA's), (23, 15440), (Start: 24 @15443 has 11 MA's), (26, 15452), (30, 15470), (36, 15509), (46, 15626),

Gene: Hartsy_16 Start: 13647, Stop: 13997, Start Num: 18

Candidate Starts for Hartsy_16:

(Start: 18 @13647 has 240 MA's), (Start: 21 @13698 has 72 MA's), (23, 13710), (Start: 24 @13713 has 11 MA's), (26, 13722), (31, 13743), (53, 13938),

Gene: Harvey_16 Start: 13723, Stop: 14022, Start Num: 21

Candidate Starts for Harvey_16:

(Start: 18 @13672 has 240 MA's), (Start: 21 @13723 has 72 MA's), (23, 13735), (Start: 24 @13738 has 11 MA's), (26, 13747), (31, 13768), (53, 13963),

Gene: Heath_16 Start: 15374, Stop: 15745, Start Num: 18

Candidate Starts for Heath_16:

(Start: 18 @15374 has 240 MA's), (Start: 21 @15425 has 72 MA's), (23, 15437), (Start: 24 @15440 has 11 MA's), (26, 15449), (30, 15467), (36, 15506), (46, 15623),

Gene: Held_16 Start: 13358, Stop: 13708, Start Num: 18

Candidate Starts for Held_16:

(Start: 18 @13358 has 240 MA's), (Start: 21 @13409 has 72 MA's), (23, 13421), (Start: 24 @13424 has 11 MA's), (26, 13433), (31, 13454), (53, 13649),

Gene: HenryJackson_15 Start: 13372, Stop: 13722, Start Num: 18

Candidate Starts for HenryJackson_15:

(Start: 18 @13372 has 240 MA's), (Start: 21 @13423 has 72 MA's), (23, 13435), (Start: 24 @13438 has 11 MA's), (26, 13447), (31, 13468), (53, 13663),

Gene: Hertubise_16 Start: 13665, Stop: 14015, Start Num: 18

Candidate Starts for Hertubise_16:

(Start: 18 @13665 has 240 MA's), (Start: 21 @13716 has 72 MA's), (23, 13728), (Start: 24 @13731 has 11 MA's), (26, 13740), (31, 13761), (53, 13956),

Gene: Hetaeria_16 Start: 13668, Stop: 14018, Start Num: 18

Candidate Starts for Hetaeria_16:

(Start: 18 @13668 has 240 MA's), (Start: 21 @13719 has 72 MA's), (23, 13731), (Start: 24 @13734 has 11 MA's), (26, 13743), (31, 13764), (53, 13959),

Gene: HighStump_15 Start: 13357, Stop: 13707, Start Num: 18

Candidate Starts for HighStump_15:

(Start: 18 @13357 has 240 MA's), (Start: 21 @13408 has 72 MA's), (23, 13420), (Start: 24 @13423 has 11 MA's), (26, 13432), (31, 13453), (53, 13648),

Gene: Hocus_15 Start: 13357, Stop: 13707, Start Num: 18

Candidate Starts for Hocus_15:

(Start: 18 @13357 has 240 MA's), (Start: 21 @13408 has 72 MA's), (23, 13420), (Start: 24 @13423 has 11 MA's), (26, 13432), (31, 13453), (53, 13648),

Gene: Hope_30 Start: 26790, Stop: 27110, Start Num: 19

Candidate Starts for Hope_30:

(Start: 19 @26790 has 54 MA's), (Start: 24 @26853 has 11 MA's), (Start: 27 @26865 has 2 MA's), (Start: 29 @26871 has 1 MA's), (30, 26880), (33, 26895), (35, 26916), (36, 26919), (38, 26934), (40, 26949), (41, 26961), (48, 27039), (58, 27099),

Gene: Horchata_16 Start: 13637, Stop: 13987, Start Num: 18

Candidate Starts for Horchata_16:

(Start: 18 @13637 has 240 MA's), (Start: 21 @13688 has 72 MA's), (Start: 24 @13703 has 11 MA's), (26, 13712), (31, 13733), (53, 13928),

Gene: Hotshotbaby7_30 Start: 26853, Stop: 27110, Start Num: 24

Candidate Starts for Hotshotbaby7_30:

(Start: 19 @26790 has 54 MA's), (Start: 24 @26853 has 11 MA's), (Start: 27 @26865 has 2 MA's), (Start: 29 @26871 has 1 MA's), (30, 26880), (33, 26895), (35, 26916), (36, 26919), (38, 26934), (40,

26949), (41, 26961), (48, 27039), (58, 27099),

Gene: Hydro_16 Start: 15374, Stop: 15745, Start Num: 18

Candidate Starts for Hydro_16:

(Start: 18 @15374 has 240 MA's), (Start: 21 @15425 has 72 MA's), (23, 15437), (Start: 24 @15440 has 11 MA's), (26, 15449), (30, 15467), (36, 15506), (46, 15623),

Gene: ImtiyazSitla_15 Start: 13248, Stop: 13547, Start Num: 21

Candidate Starts for ImtiyazSitla_15:

(Start: 18 @13197 has 240 MA's), (Start: 21 @13248 has 72 MA's), (23, 13260), (Start: 24 @13263 has 11 MA's), (26, 13272), (31, 13293), (53, 13488),

Gene: Inchworm_16 Start: 13641, Stop: 13991, Start Num: 18

Candidate Starts for Inchworm_16:

(Start: 18 @13641 has 240 MA's), (Start: 21 @13692 has 72 MA's), (23, 13704), (Start: 24 @13707 has 11 MA's), (26, 13716), (31, 13737), (53, 13932),

Gene: Indlovu_16 Start: 15203, Stop: 15598, Start Num: 18

Candidate Starts for Indlovu_16:

(Start: 18 @15203 has 240 MA's), (Start: 21 @15254 has 72 MA's), (23, 15266), (56, 15521), (57, 15533), (60, 15545),

Gene: Inverness_16 Start: 13709, Stop: 14008, Start Num: 21

Candidate Starts for Inverness_16:

(Start: 18 @13658 has 240 MA's), (Start: 21 @13709 has 72 MA's), (23, 13721), (Start: 24 @13724 has 11 MA's), (26, 13733), (31, 13754), (53, 13949),

Gene: Iridessa_15 Start: 13377, Stop: 13676, Start Num: 21

Candidate Starts for Iridessa_15:

(Start: 18 @13326 has 240 MA's), (Start: 21 @13377 has 72 MA's), (23, 13389), (Start: 24 @13392 has 11 MA's), (26, 13401), (31, 13422), (53, 13617),

Gene: Iridoclysis_16 Start: 13681, Stop: 13980, Start Num: 21

Candidate Starts for Iridoclysis_16:

(Start: 18 @13630 has 240 MA's), (Start: 21 @13681 has 72 MA's), (23, 13693), (Start: 24 @13696 has 11 MA's), (26, 13705), (31, 13726), (53, 13921),

Gene: IsaacEli_16 Start: 13713, Stop: 14012, Start Num: 21

Candidate Starts for IsaacEli_16:

(Start: 18 @13662 has 240 MA's), (Start: 21 @13713 has 72 MA's), (23, 13725), (Start: 24 @13728 has 11 MA's), (26, 13737), (31, 13758), (53, 13953),

Gene: JAMaL_16 Start: 15558, Stop: 15929, Start Num: 18

Candidate Starts for JAMaL_16:

(Start: 18 @15558 has 240 MA's), (Start: 21 @15609 has 72 MA's), (23, 15621), (26, 15633), (36, 15690), (37, 15696), (46, 15807), (47, 15816), (50, 15840),

Gene: JDog_15 Start: 13416, Stop: 13715, Start Num: 21

Candidate Starts for JDog_15:

(Start: 18 @13365 has 240 MA's), (Start: 21 @13416 has 72 MA's), (23, 13428), (Start: 24 @13431 has 11 MA's), (26, 13440), (31, 13461), (53, 13656),

Gene: JacAttac_16 Start: 13641, Stop: 13991, Start Num: 18

Candidate Starts for JacAttac_16:

(Start: 18 @13641 has 240 MA's), (Start: 21 @13692 has 72 MA's), (23, 13704), (Start: 24 @13707 has 11 MA's), (26, 13716), (31, 13737), (53, 13932),

Gene: JakeO_15 Start: 13365, Stop: 13715, Start Num: 18

Candidate Starts for JakeO_15:

(Start: 18 @13365 has 240 MA's), (Start: 21 @13416 has 72 MA's), (23, 13428), (Start: 24 @13431 has 11 MA's), (26, 13440), (31, 13461), (53, 13656),

Gene: Jane_30 Start: 26790, Stop: 27110, Start Num: 19

Candidate Starts for Jane_30:

(Start: 19 @26790 has 54 MA's), (Start: 24 @26853 has 11 MA's), (Start: 27 @26865 has 2 MA's), (Start: 29 @26871 has 1 MA's), (30, 26880), (33, 26895), (35, 26916), (36, 26919), (38, 26934), (40, 26949), (41, 26961), (48, 27039), (58, 27099),

Gene: JangoPhett_16 Start: 13642, Stop: 13992, Start Num: 18

Candidate Starts for JangoPhett_16:

(Start: 18 @13642 has 240 MA's), (Start: 21 @13693 has 72 MA's), (23, 13705), (Start: 24 @13708 has 11 MA's), (26, 13717), (31, 13738), (53, 13933),

Gene: Jesabah_16 Start: 13421, Stop: 13720, Start Num: 21

Candidate Starts for Jesabah_16:

(Start: 18 @13370 has 240 MA's), (Start: 21 @13421 has 72 MA's), (23, 13433), (Start: 24 @13436 has 11 MA's), (26, 13445), (31, 13466), (53, 13661),

Gene: Jillium_15 Start: 13363, Stop: 13713, Start Num: 18

Candidate Starts for Jillium_15:

(Start: 18 @13363 has 240 MA's), (Start: 21 @13414 has 72 MA's), (23, 13426), (Start: 24 @13429 has 11 MA's), (26, 13438), (31, 13459), (53, 13654),

Gene: Jiminy_15 Start: 13205, Stop: 13555, Start Num: 18

Candidate Starts for Jiminy_15:

(Start: 18 @13205 has 240 MA's), (Start: 21 @13256 has 72 MA's), (23, 13268), (Start: 24 @13271 has 11 MA's), (26, 13280), (31, 13301), (53, 13496),

Gene: Jiraiya_16 Start: 13416, Stop: 13715, Start Num: 21

Candidate Starts for Jiraiya_16:

(Start: 18 @13365 has 240 MA's), (Start: 21 @13416 has 72 MA's), (Start: 24 @13431 has 11 MA's), (26, 13440), (31, 13461), (53, 13656),

Gene: Jolene_30 Start: 26790, Stop: 27110, Start Num: 19

Candidate Starts for Jolene_30:

(Start: 19 @26790 has 54 MA's), (Start: 24 @26853 has 11 MA's), (Start: 27 @26865 has 2 MA's), (Start: 29 @26871 has 1 MA's), (30, 26880), (33, 26895), (35, 26916), (36, 26919), (38, 26934), (40, 26949), (41, 26961), (48, 27039), (58, 27099),

Gene: Jolie2_30 Start: 27308, Stop: 27706, Start Num: 19

Candidate Starts for Jolie2_30:

(Start: 19 @27308 has 54 MA's), (28, 27386), (30, 27398), (33, 27413), (35, 27434), (36, 27437), (38, 27452), (43, 27524), (47, 27560),

Gene: Jonghyun_30 Start: 26790, Stop: 27110, Start Num: 19

Candidate Starts for Jonghyun_30:

(Start: 19 @26790 has 54 MA's), (Start: 24 @26853 has 11 MA's), (Start: 27 @26865 has 2 MA's), (Start: 29 @26871 has 1 MA's), (30, 26880), (33, 26895), (35, 26916), (36, 26919), (38, 26934), (40, 26949), (41, 26961), (48, 27039), (58, 27099),

Gene: JorRay_30 Start: 26790, Stop: 27110, Start Num: 19

Candidate Starts for JorRay_30:

(Start: 19 @26790 has 54 MA's), (Start: 24 @26853 has 11 MA's), (Start: 27 @26865 has 2 MA's), (Start: 29 @26871 has 1 MA's), (30, 26880), (33, 26895), (35, 26916), (36, 26919), (38, 26934), (40, 26949), (41, 26961), (48, 27039), (58, 27099),

Gene: KLucky39_16 Start: 13701, Stop: 14000, Start Num: 21

Candidate Starts for KLucky39_16:

(Start: 18 @13650 has 240 MA's), (Start: 21 @13701 has 72 MA's), (23, 13713), (Start: 24 @13716 has 11 MA's), (26, 13725), (31, 13746), (53, 13941),

Gene: Kahve_15 Start: 13372, Stop: 13722, Start Num: 18

Candidate Starts for Kahve_15:

(Start: 18 @13372 has 240 MA's), (Start: 21 @13423 has 72 MA's), (23, 13435), (Start: 24 @13438 has 11 MA's), (26, 13447), (31, 13468), (53, 13663),

Gene: Kailash_16 Start: 13659, Stop: 14009, Start Num: 18

Candidate Starts for Kailash_16:

(Start: 18 @13659 has 240 MA's), (Start: 21 @13710 has 72 MA's), (23, 13722), (Start: 24 @13725 has 11 MA's), (26, 13734), (31, 13755), (53, 13950),

Gene: Kareem_30 Start: 26790, Stop: 27110, Start Num: 19

Candidate Starts for Kareem_30:

(Start: 19 @26790 has 54 MA's), (Start: 24 @26853 has 11 MA's), (Start: 27 @26865 has 2 MA's), (Start: 29 @26871 has 1 MA's), (30, 26880), (33, 26895), (35, 26916), (36, 26919), (38, 26934), (40, 26949), (41, 26961), (48, 27039), (58, 27099),

Gene: Kasen3_30 Start: 26854, Stop: 27111, Start Num: 24

Candidate Starts for Kasen3_30:

(Start: 19 @26791 has 54 MA's), (Start: 24 @26854 has 11 MA's), (Start: 27 @26866 has 2 MA's), (Start: 29 @26872 has 1 MA's), (30, 26881), (33, 26896), (35, 26917), (36, 26920), (38, 26935), (40, 26950), (41, 26962), (48, 27040), (58, 27100),

Gene: Katniss_16 Start: 13720, Stop: 14019, Start Num: 21

Candidate Starts for Katniss_16:

(Start: 18 @13669 has 240 MA's), (Start: 21 @13720 has 72 MA's), (23, 13732), (Start: 24 @13735 has 11 MA's), (26, 13744), (31, 13765), (53, 13960),

Gene: Keitherie_16 Start: 13670, Stop: 14020, Start Num: 18

Candidate Starts for Keitherie_16:

(Start: 18 @13670 has 240 MA's), (Start: 21 @13721 has 72 MA's), (23, 13733), (Start: 24 @13736 has 11 MA's), (26, 13745), (31, 13766), (53, 13961),

Gene: Khan1_16 Start: 13416, Stop: 13715, Start Num: 21

Candidate Starts for Khan1_16:

(Start: 18 @13365 has 240 MA's), (Start: 21 @13416 has 72 MA's), (23, 13428), (Start: 24 @13431 has 11 MA's), (26, 13440), (31, 13461), (53, 13656),

Gene: Kikipoo_16 Start: 13713, Stop: 14012, Start Num: 21

Candidate Starts for Kikipoo_16:

(Start: 18 @13662 has 240 MA's), (Start: 21 @13713 has 72 MA's), (23, 13725), (Start: 24 @13728 has 11 MA's), (26, 13737), (31, 13758), (53, 13953),

Gene: Kimbrough_16 Start: 13360, Stop: 13710, Start Num: 18

Candidate Starts for Kimbrough_16:

(Start: 18 @13360 has 240 MA's), (Start: 21 @13411 has 72 MA's), (23, 13423), (Start: 24 @13426 has 11 MA's), (26, 13435), (31, 13456), (53, 13651),

Gene: Kinbote_35 Start: 30016, Stop: 30336, Start Num: 18

Candidate Starts for Kinbote_35:

(Start: 18 @30016 has 240 MA's), (Start: 27 @30094 has 2 MA's), (30, 30109), (32, 30121), (35, 30151), (37, 30160), (41, 30196), (45, 30229), (52, 30283),

Gene: KingTut_15 Start: 13352, Stop: 13702, Start Num: 18

Candidate Starts for KingTut_15:

(Start: 18 @13352 has 240 MA's), (Start: 21 @13403 has 72 MA's), (23, 13415), (Start: 24 @13418 has 11 MA's), (26, 13427), (31, 13448), (53, 13643),

Gene: KingVeVeVe_16 Start: 13639, Stop: 13989, Start Num: 18

Candidate Starts for KingVeVeVe_16:

(Start: 18 @13639 has 240 MA's), (Start: 21 @13690 has 72 MA's), (Start: 24 @13705 has 11 MA's), (26, 13714), (31, 13735), (53, 13930),

Gene: KlimbOn_16 Start: 13650, Stop: 14000, Start Num: 18

Candidate Starts for KlimbOn_16:

(Start: 18 @13650 has 240 MA's), (Start: 21 @13701 has 72 MA's), (23, 13713), (Start: 24 @13716 has 11 MA's), (26, 13725), (31, 13746), (53, 13941),

Gene: Kloppinator_16 Start: 13666, Stop: 14016, Start Num: 18

Candidate Starts for Kloppinator_16:

(Start: 18 @13666 has 240 MA's), (Start: 21 @13717 has 72 MA's), (23, 13729), (Start: 24 @13732 has 11 MA's), (26, 13741), (31, 13762), (53, 13957),

Gene: Knocker_20 Start: 17715, Stop: 18101, Start Num: 18

Candidate Starts for Knocker_20:

(Start: 18 @17715 has 240 MA's), (30, 17808), (31, 17811), (55, 18000),

Gene: Kwadwo_15 Start: 13351, Stop: 13701, Start Num: 18

Candidate Starts for Kwadwo_15:

(Start: 18 @13351 has 240 MA's), (Start: 21 @13402 has 72 MA's), (23, 13414), (Start: 24 @13417 has 11 MA's), (26, 13426), (31, 13447), (53, 13642),

Gene: Kwksand96_15 Start: 13215, Stop: 13565, Start Num: 18

Candidate Starts for Kwksand96_15:

(Start: 18 @13215 has 240 MA's), (Start: 21 @13266 has 72 MA's), (23, 13278), (Start: 24 @13281 has 11 MA's), (26, 13290), (31, 13311), (53, 13506),

Gene: Labeouficaum_15 Start: 13209, Stop: 13559, Start Num: 18

Candidate Starts for Labeouficaum_15:

(Start: 18 @13209 has 240 MA's), (Start: 21 @13260 has 72 MA's), (23, 13272), (Start: 24 @13275 has 11 MA's), (26, 13284), (31, 13305), (53, 13500),

Gene: Lambano_15 Start: 14361, Stop: 14681, Start Num: 21

Candidate Starts for Lambano_15:

(1, 13947), (Start: 18 @14310 has 240 MA's), (Start: 21 @14361 has 72 MA's), (23, 14373), (26, 14385), (30, 14403), (37, 14448), (46, 14559),

Gene: LasagnaCat_16 Start: 13653, Stop: 14003, Start Num: 18

Candidate Starts for LasagnaCat_16:

(Start: 18 @13653 has 240 MA's), (Start: 21 @13704 has 72 MA's), (23, 13716), (Start: 24 @13719 has 11 MA's), (26, 13728), (31, 13749), (53, 13944),

Gene: Lasso_16 Start: 13680, Stop: 13979, Start Num: 21

Candidate Starts for Lasso_16:

(Start: 18 @13629 has 240 MA's), (Start: 21 @13680 has 72 MA's), (23, 13692), (Start: 24 @13695 has 11 MA's), (26, 13704), (31, 13725), (53, 13920),

Gene: LeeLot_16 Start: 13650, Stop: 14000, Start Num: 18

Candidate Starts for LeeLot_16:

(Start: 18 @13650 has 240 MA's), (Start: 21 @13701 has 72 MA's), (23, 13713), (Start: 24 @13716 has 11 MA's), (26, 13725), (31, 13746), (53, 13941),

Gene: Lego3393_16 Start: 13666, Stop: 14016, Start Num: 18

Candidate Starts for Lego3393_16:

(Start: 18 @13666 has 240 MA's), (Start: 21 @13717 has 72 MA's), (23, 13729), (Start: 24 @13732 has 11 MA's), (26, 13741), (31, 13762), (53, 13957),

Gene: Legolas_15 Start: 13367, Stop: 13717, Start Num: 18

Candidate Starts for Legolas_15:

(Start: 18 @13367 has 240 MA's), (Start: 21 @13418 has 72 MA's), (23, 13430), (Start: 24 @13433 has 11 MA's), (26, 13442), (31, 13463), (53, 13658),

Gene: LeiMonet_16 Start: 13410, Stop: 13709, Start Num: 21

Candidate Starts for LeiMonet_16:

(Start: 18 @13359 has 240 MA's), (Start: 21 @13410 has 72 MA's), (23, 13422), (Start: 24 @13425 has 11 MA's), (26, 13434), (31, 13455), (53, 13650),

Gene: LemonSlice_16 Start: 13361, Stop: 13711, Start Num: 18

Candidate Starts for LemonSlice_16:

(Start: 18 @13361 has 240 MA's), (Start: 21 @13412 has 72 MA's), (23, 13424), (Start: 24 @13427 has 11 MA's), (26, 13436), (31, 13457), (53, 13652),

Gene: Lemuria_31 Start: 28466, Stop: 28822, Start Num: 19

Candidate Starts for Lemuria_31:

(14, 28391), (Start: 19 @28466 has 54 MA's), (28, 28547), (30, 28559), (35, 28595), (36, 28598), (37, 28604), (43, 28685), (47, 28721), (59, 28802),

Gene: Liefie_30 Start: 26788, Stop: 27108, Start Num: 19

Candidate Starts for Liefie_30:

(Start: 19 @26788 has 54 MA's), (Start: 24 @26851 has 11 MA's), (Start: 27 @26863 has 2 MA's), (Start: 29 @26869 has 1 MA's), (30, 26878), (33, 26893), (35, 26914), (36, 26917), (38, 26932), (40, 26947), (41, 26959), (48, 27037), (58, 27097),

Gene: LilHazelnut_35 Start: 30016, Stop: 30336, Start Num: 18

Candidate Starts for LilHazelnut_35:

(Start: 18 @30016 has 240 MA's), (Start: 27 @30094 has 2 MA's), (30, 30109), (32, 30121), (35, 30151), (37, 30160), (41, 30196), (45, 30229), (52, 30283),

Gene: LilMcDreamy_16 Start: 15832, Stop: 16200, Start Num: 18

Candidate Starts for LilMcDreamy_16:

(Start: 18 @15832 has 240 MA's), (Start: 24 @15898 has 11 MA's), (28, 15913), (Start: 29 @15916 has 1 MA's), (32, 15937), (36, 15964), (42, 16039), (49, 16105), (51, 16111),

Gene: Lolalove_16 Start: 15374, Stop: 15745, Start Num: 18

Candidate Starts for Lolalove_16:

(Start: 18 @15374 has 240 MA's), (Start: 21 @15425 has 72 MA's), (23, 15437), (Start: 24 @15440 has 11 MA's), (26, 15449), (30, 15467), (46, 15623),

Gene: Longacauda_15 Start: 13404, Stop: 13703, Start Num: 21

Candidate Starts for Longacauda_15:

(Start: 18 @13353 has 240 MA's), (Start: 21 @13404 has 72 MA's), (23, 13416), (Start: 24 @13419 has 11 MA's), (26, 13428), (31, 13449), (53, 13644),

Gene: Lopsy_15 Start: 13260, Stop: 13559, Start Num: 21

Candidate Starts for Lopsy_15:

(Start: 18 @13209 has 240 MA's), (Start: 21 @13260 has 72 MA's), (23, 13272), (Start: 24 @13275 has 11 MA's), (26, 13284), (31, 13305), (53, 13500),

Gene: LostAndPhound_15 Start: 13363, Stop: 13713, Start Num: 18

Candidate Starts for LostAndPhound_15:

(Start: 18 @13363 has 240 MA's), (Start: 21 @13414 has 72 MA's), (23, 13426), (Start: 24 @13429 has 11 MA's), (26, 13438), (31, 13459), (53, 13654),

Gene: LouisV14_30 Start: 26790, Stop: 27110, Start Num: 19

Candidate Starts for LouisV14_30:

(Start: 19 @26790 has 54 MA's), (Start: 24 @26853 has 11 MA's), (Start: 27 @26865 has 2 MA's), (Start: 29 @26871 has 1 MA's), (30, 26880), (33, 26895), (35, 26916), (36, 26919), (38, 26934), (40, 26949), (41, 26961), (48, 27039), (58, 27099),

Gene: LuckyMarjie_15 Start: 13375, Stop: 13725, Start Num: 18

Candidate Starts for LuckyMarjie_15:

(Start: 18 @13375 has 240 MA's), (Start: 21 @13426 has 72 MA's), (23, 13438), (Start: 24 @13441 has 11 MA's), (26, 13450), (31, 13471), (53, 13666),

Gene: Luke_35 Start: 29971, Stop: 30291, Start Num: 18

Candidate Starts for Luke_35:

(Start: 18 @29971 has 240 MA's), (Start: 27 @30049 has 2 MA's), (30, 30064), (32, 30076), (35, 30106), (37, 30115), (41, 30151), (45, 30184), (52, 30238),

Gene: Lulumae_15 Start: 13352, Stop: 13702, Start Num: 18

Candidate Starts for Lulumae_15:

(Start: 18 @13352 has 240 MA's), (Start: 21 @13403 has 72 MA's), (23, 13415), (Start: 24 @13418 has 11 MA's), (26, 13427), (31, 13448), (53, 13643),

Gene: Lulwa_16 Start: 13641, Stop: 13991, Start Num: 18

Candidate Starts for Lulwa_16:

(Start: 18 @13641 has 240 MA's), (Start: 21 @13692 has 72 MA's), (Start: 24 @13707 has 11 MA's), (26, 13716), (31, 13737), (53, 13932),

Gene: Lumine_15 Start: 13345, Stop: 13695, Start Num: 18

Candidate Starts for Lumine_15:

(Start: 18 @13345 has 240 MA's), (Start: 21 @13396 has 72 MA's), (23, 13408), (Start: 24 @13411 has 11 MA's), (26, 13420), (31, 13441), (53, 13636),

Gene: Luna22_34 Start: 30016, Stop: 30336, Start Num: 18

Candidate Starts for Luna22_34:

(Start: 18 @30016 has 240 MA's), (Start: 27 @30094 has 2 MA's), (30, 30109), (32, 30121), (35, 30151), (37, 30160), (41, 30196), (45, 30229), (52, 30283),

Gene: MOOREtheMARYer_31 Start: 28761, Stop: 29120, Start Num: 19

Candidate Starts for MOOREtheMARYer_31:

(Start: 19 @28761 has 54 MA's), (28, 28839), (30, 28851), (35, 28887), (36, 28890), (43, 28977), (47, 29013), (59, 29094),

Gene: MRabcd_15 Start: 13354, Stop: 13704, Start Num: 18

Candidate Starts for MRabcd_15:

(Start: 18 @13354 has 240 MA's), (Start: 21 @13405 has 72 MA's), (23, 13417), (Start: 24 @13420 has 11 MA's), (26, 13429), (31, 13450), (53, 13645),

Gene: Mag7_15 Start: 13209, Stop: 13559, Start Num: 18

Candidate Starts for Mag7_15:

(Start: 18 @13209 has 240 MA's), (Start: 21 @13260 has 72 MA's), (23, 13272), (Start: 24 @13275 has 11 MA's), (26, 13284), (31, 13305), (53, 13500),

Gene: Magic8_16 Start: 13647, Stop: 13997, Start Num: 18

Candidate Starts for Magic8_16:

(Start: 18 @13647 has 240 MA's), (Start: 21 @13698 has 72 MA's), (23, 13710), (Start: 24 @13713 has 11 MA's), (26, 13722), (31, 13743), (53, 13938),

Gene: Magpie_16 Start: 15559, Stop: 15933, Start Num: 18

Candidate Starts for Magpie_16:

(Start: 18 @15559 has 240 MA's), (Start: 21 @15610 has 72 MA's), (23, 15622), (Start: 24 @15625 has 11 MA's), (26, 15634), (30, 15652), (46, 15808),

Gene: Maliketh_30 Start: 26865, Stop: 27110, Start Num: 27

Candidate Starts for Maliketh_30:

(Start: 19 @26790 has 54 MA's), (Start: 24 @26853 has 11 MA's), (Start: 27 @26865 has 2 MA's), (Start: 29 @26871 has 1 MA's), (30, 26880), (33, 26895), (35, 26916), (36, 26919), (38, 26934), (40, 26949), (41, 26961), (48, 27039), (58, 27099),

Gene: Mana_15 Start: 13408, Stop: 13707, Start Num: 21

Candidate Starts for Mana_15:

(Start: 18 @13357 has 240 MA's), (Start: 21 @13408 has 72 MA's), (23, 13420), (Start: 24 @13423 has 11 MA's), (26, 13432), (31, 13453), (53, 13648),

Gene: Manad_15 Start: 13258, Stop: 13557, Start Num: 21

Candidate Starts for Manad_15:

(Start: 18 @13207 has 240 MA's), (Start: 21 @13258 has 72 MA's), (Start: 24 @13273 has 11 MA's), (26, 13282), (31, 13303), (53, 13498),

Gene: Marmie_30 Start: 26790, Stop: 27110, Start Num: 19

Candidate Starts for Marmie_30:

(Start: 19 @26790 has 54 MA's), (Start: 24 @26853 has 11 MA's), (Start: 27 @26865 has 2 MA's), (Start: 29 @26871 has 1 MA's), (30, 26880), (33, 26895), (35, 26916), (36, 26919), (38, 26934), (40, 26949), (41, 26961), (48, 27039), (58, 27099),

Gene: Maru_15 Start: 13355, Stop: 13705, Start Num: 18

Candidate Starts for Maru_15:

(Start: 18 @13355 has 240 MA's), (Start: 21 @13406 has 72 MA's), (23, 13418), (Start: 24 @13421 has 11 MA's), (26, 13430), (31, 13451), (53, 13646),

Gene: Maskar_15 Start: 13248, Stop: 13547, Start Num: 21

Candidate Starts for Maskar_15:

(Start: 18 @13197 has 240 MA's), (Start: 21 @13248 has 72 MA's), (23, 13260), (Start: 24 @13263 has 11 MA's), (26, 13272), (31, 13293), (53, 13488),

Gene: Matalotodo_16 Start: 13645, Stop: 13995, Start Num: 18

Candidate Starts for Matalotodo_16:

(Start: 18 @13645 has 240 MA's), (Start: 21 @13696 has 72 MA's), (23, 13708), (Start: 24 @13711 has 11 MA's), (26, 13720), (31, 13741), (53, 13936),

Gene: Mcshane_15 Start: 13351, Stop: 13701, Start Num: 18

Candidate Starts for Mcshane_15:

(Start: 18 @13351 has 240 MA's), (Start: 21 @13402 has 72 MA's), (23, 13414), (Start: 24 @13417 has 11 MA's), (26, 13426), (31, 13447), (53, 13642),

Gene: Mecca_15 Start: 13348, Stop: 13698, Start Num: 18

Candidate Starts for Mecca_15:

(Start: 18 @13348 has 240 MA's), (Start: 21 @13399 has 72 MA's), (23, 13411), (Start: 24 @13414 has 11 MA's), (26, 13423), (31, 13444), (53, 13639),

Gene: Megamind20_16 Start: 13421, Stop: 13720, Start Num: 21

Candidate Starts for Megamind20_16:

(Start: 18 @13370 has 240 MA's), (Start: 21 @13421 has 72 MA's), (23, 13433), (Start: 24 @13436 has 11 MA's), (26, 13445), (31, 13466), (53, 13661),

Gene: Megatron_16 Start: 13701, Stop: 14000, Start Num: 21

Candidate Starts for Megatron_16:

(Start: 18 @13650 has 240 MA's), (Start: 21 @13701 has 72 MA's), (23, 13713), (Start: 24 @13716 has 11 MA's), (26, 13725), (31, 13746), (53, 13941),

Gene: Melc17_16 Start: 13641, Stop: 13991, Start Num: 18

Candidate Starts for Melc17_16:

(Start: 18 @13641 has 240 MA's), (Start: 21 @13692 has 72 MA's), (23, 13704), (Start: 24 @13707 has 11 MA's), (26, 13716), (31, 13737), (53, 13932),

Gene: MelsMeow_15 Start: 13260, Stop: 13559, Start Num: 21

Candidate Starts for MelsMeow_15:

(Start: 18 @13209 has 240 MA's), (Start: 21 @13260 has 72 MA's), (23, 13272), (Start: 24 @13275 has 11 MA's), (26, 13284), (31, 13305), (53, 13500),

Gene: Mercurio_32 Start: 28993, Stop: 29313, Start Num: 19

Candidate Starts for Mercurio_32:

(Start: 19 @28993 has 54 MA's), (28, 29071), (30, 29083), (35, 29119), (36, 29122), (38, 29137), (43, 29209), (47, 29245),

Gene: Mesh1_16 Start: 13659, Stop: 14009, Start Num: 18

Candidate Starts for Mesh1_16:

(Start: 18 @13659 has 240 MA's), (Start: 21 @13710 has 72 MA's), (23, 13722), (Start: 24 @13725 has 11 MA's), (26, 13734), (31, 13755), (53, 13950),

Gene: Mesmerelda_16 Start: 13402, Stop: 13701, Start Num: 21

Candidate Starts for Mesmerelda_16:

(Start: 18 @13351 has 240 MA's), (Start: 21 @13402 has 72 MA's), (23, 13414), (Start: 24 @13417 has 11 MA's), (26, 13426), (31, 13447), (53, 13642),

Gene: MichaelPhcott_15 Start: 13209, Stop: 13559, Start Num: 18

Candidate Starts for MichaelPhcott_15:

(Start: 18 @13209 has 240 MA's), (Start: 21 @13260 has 72 MA's), (23, 13272), (Start: 24 @13275 has 11 MA's), (26, 13284), (31, 13305), (53, 13500),

Gene: Mikota_16 Start: 13636, Stop: 13986, Start Num: 18

Candidate Starts for Mikota_16:

(Start: 18 @13636 has 240 MA's), (Start: 21 @13687 has 72 MA's), (Start: 24 @13702 has 11 MA's), (26, 13711), (31, 13732), (53, 13927),

Gene: MiniBoss_16 Start: 13638, Stop: 13988, Start Num: 18

Candidate Starts for MiniBoss_16:

(Start: 18 @13638 has 240 MA's), (Start: 21 @13689 has 72 MA's), (Start: 24 @13704 has 11 MA's), (26, 13713), (31, 13734), (53, 13929),

Gene: MitKao_16 Start: 13357, Stop: 13707, Start Num: 18

Candidate Starts for MitKao_16:

(Start: 18 @13357 has 240 MA's), (Start: 21 @13408 has 72 MA's), (23, 13420), (Start: 24 @13423 has 11 MA's), (26, 13432), (31, 13453), (53, 13648),

Gene: Mithril_16 Start: 15377, Stop: 15748, Start Num: 18

Candidate Starts for Mithril_16:

(Start: 18 @15377 has 240 MA's), (Start: 21 @15428 has 72 MA's), (23, 15440), (Start: 24 @15443 has 11 MA's), (26, 15452), (30, 15470), (46, 15626),

Gene: Morgushi_16 Start: 13412, Stop: 13711, Start Num: 21

Candidate Starts for Morgushi_16:

(Start: 18 @13361 has 240 MA's), (Start: 21 @13412 has 72 MA's), (23, 13424), (Start: 24 @13427 has 11 MA's), (26, 13436), (31, 13457), (53, 13652),

Gene: Morty_16 Start: 13659, Stop: 14009, Start Num: 18

Candidate Starts for Morty_16:

(Start: 18 @13659 has 240 MA's), (Start: 21 @13710 has 72 MA's), (23, 13722), (Start: 24 @13725 has 11 MA's), (26, 13734), (31, 13755), (53, 13950),

Gene: Mosaic_15 Start: 13364, Stop: 13714, Start Num: 18

Candidate Starts for Mosaic_15:

(Start: 18 @13364 has 240 MA's), (Start: 21 @13415 has 72 MA's), (23, 13427), (Start: 24 @13430 has 11 MA's), (26, 13439), (31, 13460), (53, 13655),

Gene: Mowgli_30 Start: 26790, Stop: 27110, Start Num: 19

Candidate Starts for Mowgli_30:

(Start: 19 @26790 has 54 MA's), (Start: 24 @26853 has 11 MA's), (Start: 27 @26865 has 2 MA's), (Start: 29 @26871 has 1 MA's), (30, 26880), (33, 26895), (35, 26916), (36, 26919), (38, 26934), (40, 26949), (41, 26961), (48, 27039), (58, 27099),

Gene: MrPhizzler_15 Start: 13413, Stop: 13712, Start Num: 21

Candidate Starts for MrPhizzler_15:

(Start: 18 @13362 has 240 MA's), (Start: 21 @13413 has 72 MA's), (23, 13425), (Start: 24 @13428 has 11 MA's), (26, 13437), (31, 13458), (53, 13653),

Gene: Mudslide_16 Start: 15622, Stop: 15993, Start Num: 18

Candidate Starts for Mudslide_16:

(Start: 18 @15622 has 240 MA's), (Start: 21 @15673 has 72 MA's), (23, 15685), (Start: 24 @15688 has 11 MA's), (26, 15697), (30, 15715), (46, 15871),

Gene: Mulan_15 Start: 13357, Stop: 13707, Start Num: 18

Candidate Starts for Mulan_15:

(Start: 18 @13357 has 240 MA's), (Start: 21 @13408 has 72 MA's), (23, 13420), (Start: 24 @13423 has 11 MA's), (26, 13432), (31, 13453), (53, 13648),

Gene: Murdoc_16 Start: 13701, Stop: 14000, Start Num: 21

Candidate Starts for Murdoc_16:

(Start: 18 @13650 has 240 MA's), (Start: 21 @13701 has 72 MA's), (23, 13713), (Start: 24 @13716 has 11 MA's), (26, 13725), (31, 13746), (53, 13941),

Gene: Mutante_15 Start: 13360, Stop: 13710, Start Num: 18

Candidate Starts for Mutante_15:

(Start: 18 @13360 has 240 MA's), (Start: 21 @13411 has 72 MA's), (23, 13423), (Start: 24 @13426 has 11 MA's), (26, 13435), (31, 13456), (53, 13651),

Gene: Nacho_0016 Start: 13650, Stop: 14000, Start Num: 18

Candidate Starts for Nacho_0016:

(Start: 18 @13650 has 240 MA's), (Start: 21 @13701 has 72 MA's), (23, 13713), (Start: 24 @13716 has 11 MA's), (26, 13725), (31, 13746), (53, 13941),

Gene: Nanao_15 Start: 14360, Stop: 14680, Start Num: 21

Candidate Starts for Nanao_15:

(6, 14099), (9, 14141), (11, 14195), (15, 14225), (17, 14294), (20, 14321), (Start: 21 @14360 has 72 MA's), (23, 14372), (26, 14384), (30, 14402), (37, 14447), (46, 14558),

Gene: Nathan_17 Start: 13711, Stop: 14010, Start Num: 21

Candidate Starts for Nathan_17:

(Start: 18 @13660 has 240 MA's), (Start: 21 @13711 has 72 MA's), (23, 13723), (Start: 24 @13726 has 11 MA's), (26, 13735), (31, 13756), (53, 13951),

Gene: Newman_16 Start: 13701, Stop: 14000, Start Num: 21

Candidate Starts for Newman_16:

(Start: 18 @13650 has 240 MA's), (Start: 21 @13701 has 72 MA's), (23, 13713), (Start: 24 @13716 has 11 MA's), (26, 13725), (31, 13746), (53, 13941),

Gene: Nicole21_16 Start: 13642, Stop: 13992, Start Num: 18

Candidate Starts for Nicole21_16:

(Start: 18 @13642 has 240 MA's), (Start: 21 @13693 has 72 MA's), (23, 13705), (Start: 24 @13708 has 11 MA's), (26, 13717), (31, 13738), (53, 13933),

Gene: Nigel_14 Start: 14277, Stop: 14597, Start Num: 21

Candidate Starts for Nigel_14:

(Start: 18 @14226 has 240 MA's), (Start: 21 @14277 has 72 MA's), (23, 14289), (26, 14301), (36, 14358), (37, 14364), (46, 14475), (47, 14484), (50, 14508),

Gene: Numberten_16 Start: 13704, Stop: 14003, Start Num: 21

Candidate Starts for Numberten_16:

(Start: 18 @13653 has 240 MA's), (Start: 21 @13704 has 72 MA's), (23, 13716), (Start: 24 @13719 has 11 MA's), (26, 13728), (31, 13749), (53, 13944),

Gene: Nyala_15 Start: 13403, Stop: 13702, Start Num: 21

Candidate Starts for Nyala_15:

(Start: 18 @13352 has 240 MA's), (Start: 21 @13403 has 72 MA's), (23, 13415), (Start: 24 @13418 has 11 MA's), (26, 13427), (31, 13448), (53, 13643),

Gene: OBUpride_35 Start: 30010, Stop: 30330, Start Num: 18

Candidate Starts for OBUpride_35:

(Start: 18 @30010 has 240 MA's), (Start: 27 @30088 has 2 MA's), (30, 30103), (32, 30115), (35, 30145), (37, 30154), (41, 30190), (45, 30223), (52, 30277),

Gene: OSmaximus_16 Start: 13711, Stop: 14010, Start Num: 21

Candidate Starts for OSmaximus_16:

(Start: 18 @13660 has 240 MA's), (Start: 21 @13711 has 72 MA's), (23, 13723), (Start: 24 @13726 has 11 MA's), (26, 13735), (31, 13756), (53, 13951),

Gene: OctaviousRex_30 Start: 26790, Stop: 27110, Start Num: 19

Candidate Starts for OctaviousRex_30:

(Start: 19 @26790 has 54 MA's), (Start: 24 @26853 has 11 MA's), (Start: 27 @26865 has 2 MA's), (Start: 29 @26871 has 1 MA's), (30, 26880), (33, 26895), (35, 26916), (36, 26919), (38, 26934), (40, 26949), (41, 26961), (48, 27039), (58, 27099),

Gene: Olak_15 Start: 13349, Stop: 13699, Start Num: 18

Candidate Starts for Olak_15:

(Start: 18 @13349 has 240 MA's), (Start: 21 @13400 has 72 MA's), (23, 13412), (Start: 24 @13415 has 11 MA's), (26, 13424), (31, 13445), (53, 13640),

Gene: Olga_30 Start: 26853, Stop: 27110, Start Num: 24

Candidate Starts for Olga_30:

(Start: 19 @26790 has 54 MA's), (Start: 24 @26853 has 11 MA's), (Start: 27 @26865 has 2 MA's), (Start: 29 @26871 has 1 MA's), (30, 26880), (33, 26895), (35, 26916), (36, 26919), (38, 26934), (40, 26949), (41, 26961), (48, 27039), (58, 27099),

Gene: Oline_15 Start: 13209, Stop: 13559, Start Num: 18

Candidate Starts for Oline_15:

(Start: 18 @13209 has 240 MA's), (Start: 21 @13260 has 72 MA's), (23, 13272), (Start: 24 @13275 has 11 MA's), (26, 13284), (31, 13305), (53, 13500),

Gene: OliverWalter_16 Start: 13709, Stop: 14008, Start Num: 21

Candidate Starts for OliverWalter_16:

(Start: 18 @13658 has 240 MA's), (Start: 21 @13709 has 72 MA's), (Start: 24 @13724 has 11 MA's), (26, 13733), (31, 13754), (53, 13949),

Gene: Omniscient_16 Start: 13659, Stop: 14009, Start Num: 18

Candidate Starts for Omniscient_16:

(Start: 18 @13659 has 240 MA's), (Start: 21 @13710 has 72 MA's), (23, 13722), (Start: 24 @13725 has 11 MA's), (26, 13734), (31, 13755), (53, 13950),

Gene: Oosterbaan_16 Start: 13702, Stop: 14001, Start Num: 21

Candidate Starts for Oosterbaan_16:

(Start: 18 @13651 has 240 MA's), (Start: 21 @13702 has 72 MA's), (23, 13714), (Start: 24 @13717 has 11 MA's), (26, 13726), (31, 13747), (53, 13942),

Gene: Orfeu_15 Start: 13350, Stop: 13700, Start Num: 18

Candidate Starts for Orfeu_15:

(Start: 18 @13350 has 240 MA's), (Start: 21 @13401 has 72 MA's), (23, 13413), (Start: 24 @13416 has 11 MA's), (26, 13425), (31, 13446), (53, 13641),

Gene: Orion_16 Start: 13702, Stop: 14001, Start Num: 21

Candidate Starts for Orion_16:

(Start: 18 @13651 has 240 MA's), (Start: 21 @13702 has 72 MA's), (23, 13714), (Start: 24 @13717 has 11 MA's), (26, 13726), (31, 13747), (53, 13942),

Gene: Orwigg_16 Start: 13394, Stop: 13693, Start Num: 21

Candidate Starts for Orwigg_16:

(Start: 18 @13343 has 240 MA's), (Start: 21 @13394 has 72 MA's), (23, 13406), (Start: 24 @13409 has 11 MA's), (26, 13418), (31, 13439), (53, 13634),

Gene: PG1_16 Start: 13714, Stop: 14013, Start Num: 21

Candidate Starts for PG1_16:

(Start: 18 @13663 has 240 MA's), (Start: 21 @13714 has 72 MA's), (23, 13726), (Start: 24 @13729 has 11 MA's), (26, 13738), (31, 13759), (53, 13954),

Gene: Pace1224_29 Start: 28264, Stop: 28620, Start Num: 19

Candidate Starts for Pace1224_29:

(Start: 19 @28264 has 54 MA's), (28, 28342), (30, 28354), (35, 28390), (36, 28393), (43, 28480), (47, 28516), (50, 28540), (59, 28597),

Gene: Pacifista_15 Start: 13354, Stop: 13704, Start Num: 18

Candidate Starts for Pacifista_15:

(Start: 18 @13354 has 240 MA's), (Start: 21 @13405 has 72 MA's), (23, 13417), (Start: 24 @13420 has 11 MA's), (26, 13429), (31, 13450), (53, 13645),

Gene: Paito_30 Start: 27024, Stop: 27332, Start Num: 19

Candidate Starts for Paito_30:

(Start: 19 @27024 has 54 MA's), (Start: 24 @27087 has 11 MA's), (Start: 27 @27099 has 2 MA's), (Start: 29 @27105 has 1 MA's), (30, 27114), (35, 27150), (36, 27153), (38, 27168), (40, 27183), (41, 27195),

Gene: Peeb_30 Start: 26790, Stop: 27110, Start Num: 19

Candidate Starts for Peeb_30:

(Start: 19 @26790 has 54 MA's), (Start: 24 @26853 has 11 MA's), (Start: 27 @26865 has 2 MA's), (Start: 29 @26871 has 1 MA's), (30, 26880), (33, 26895), (35, 26916), (36, 26919), (38, 26934), (40,

26949), (41, 26961), (48, 27039), (58, 27099),

Gene: PenguinLover67_19 Start: 16545, Stop: 16991, Start Num: 18

Candidate Starts for PenguinLover67_19:

(Start: 18 @16545 has 240 MA's), (23, 16608), (30, 16638), (51, 16824), (61, 16896),

Gene: Periodt_30 Start: 26781, Stop: 27101, Start Num: 19

Candidate Starts for Periodt_30:

(Start: 19 @26781 has 54 MA's), (Start: 24 @26844 has 11 MA's), (Start: 27 @26856 has 2 MA's), (Start: 29 @26862 has 1 MA's), (30, 26871), (33, 26886), (35, 26907), (36, 26910), (38, 26925), (40, 26940), (41, 26952), (48, 27030), (58, 27090),

Gene: Phamished_16 Start: 13656, Stop: 14006, Start Num: 18

Candidate Starts for Phamished_16:

(Start: 18 @13656 has 240 MA's), (Start: 21 @13707 has 72 MA's), (23, 13719), (Start: 24 @13722 has 11 MA's), (26, 13731), (31, 13752), (53, 13947),

Gene: Phareon_16 Start: 13357, Stop: 13707, Start Num: 18

Candidate Starts for Phareon_16:

(Start: 18 @13357 has 240 MA's), (Start: 21 @13408 has 72 MA's), (23, 13420), (Start: 24 @13423 has 11 MA's), (26, 13432), (31, 13453), (53, 13648),

Gene: PhatCats2014_16 Start: 13666, Stop: 14016, Start Num: 18

Candidate Starts for PhatCats2014_16:

(Start: 18 @13666 has 240 MA's), (Start: 21 @13717 has 72 MA's), (23, 13729), (Start: 24 @13732 has 11 MA's), (26, 13741), (31, 13762), (53, 13957),

Gene: PhatLouie_16 Start: 13701, Stop: 14000, Start Num: 21

Candidate Starts for PhatLouie_16:

(Start: 18 @13650 has 240 MA's), (Start: 21 @13701 has 72 MA's), (23, 13713), (Start: 24 @13716 has 11 MA's), (26, 13725), (31, 13746), (53, 13941),

Gene: PhenghisKhan_15 Start: 13209, Stop: 13559, Start Num: 18

Candidate Starts for PhenghisKhan_15:

(Start: 18 @13209 has 240 MA's), (Start: 21 @13260 has 72 MA's), (23, 13272), (Start: 24 @13275 has 11 MA's), (26, 13284), (31, 13305), (53, 13500),

Gene: Pherdinand_16 Start: 13654, Stop: 14004, Start Num: 18

Candidate Starts for Pherdinand_16:

(Start: 18 @13654 has 240 MA's), (Start: 21 @13705 has 72 MA's), (23, 13717), (Start: 24 @13720 has 11 MA's), (26, 13729), (31, 13750), (53, 13945),

Gene: Phergie_15 Start: 13203, Stop: 13553, Start Num: 18

Candidate Starts for Phergie_15:

(Start: 18 @13203 has 240 MA's), (Start: 21 @13254 has 72 MA's), (23, 13266), (Start: 24 @13269 has 11 MA's), (26, 13278), (31, 13299), (53, 13494),

Gene: Phipps_16 Start: 13680, Stop: 13979, Start Num: 21

Candidate Starts for Phipps_16:

(Start: 18 @13629 has 240 MA's), (Start: 21 @13680 has 72 MA's), (23, 13692), (Start: 24 @13695 has 11 MA's), (26, 13704), (31, 13725), (53, 13920),

Gene: Phish_30 Start: 26865, Stop: 27110, Start Num: 27

Candidate Starts for Phish_30:

(Start: 19 @26790 has 54 MA's), (Start: 24 @26853 has 11 MA's), (Start: 27 @26865 has 2 MA's), (Start: 29 @26871 has 1 MA's), (30, 26880), (33, 26895), (35, 26916), (36, 26919), (38, 26934), (40, 26949), (41, 26961), (48, 27039), (58, 27099),

Gene: Phleuron_15 Start: 13209, Stop: 13559, Start Num: 18

Candidate Starts for Phleuron_15:

(Start: 18 @13209 has 240 MA's), (Start: 21 @13260 has 72 MA's), (23, 13272), (Start: 24 @13275 has 11 MA's), (26, 13284), (31, 13305), (53, 13500),

Gene: PhrankReynolds_15 Start: 13209, Stop: 13559, Start Num: 18

Candidate Starts for PhrankReynolds_15:

(Start: 18 @13209 has 240 MA's), (Start: 21 @13260 has 72 MA's), (23, 13272), (Start: 24 @13275 has 11 MA's), (26, 13284), (31, 13305), (53, 13500),

Gene: Phreak_30 Start: 26790, Stop: 27110, Start Num: 19

Candidate Starts for Phreak_30:

(Start: 19 @26790 has 54 MA's), (Start: 24 @26853 has 11 MA's), (Start: 27 @26865 has 2 MA's), (Start: 29 @26871 has 1 MA's), (30, 26880), (33, 26895), (35, 26916), (36, 26919), (38, 26934), (40, 26949), (41, 26961), (48, 27039), (58, 27099),

Gene: PhrodoBaggins_15 Start: 13644, Stop: 13994, Start Num: 18

Candidate Starts for PhrodoBaggins_15:

(Start: 18 @13644 has 240 MA's), (Start: 21 @13695 has 72 MA's), (23, 13707), (Start: 24 @13710 has 11 MA's), (26, 13719), (31, 13740), (53, 13935),

Gene: Phunky_16 Start: 13650, Stop: 14000, Start Num: 18

Candidate Starts for Phunky_16:

(Start: 18 @13650 has 240 MA's), (Start: 21 @13701 has 72 MA's), (23, 13713), (Start: 24 @13716 has 11 MA's), (26, 13725), (31, 13746), (53, 13941),

Gene: Piglet_0015 Start: 13653, Stop: 14003, Start Num: 18

Candidate Starts for Piglet_0015:

(Start: 18 @13653 has 240 MA's), (Start: 21 @13704 has 72 MA's), (23, 13716), (Start: 24 @13719 has 11 MA's), (26, 13728), (31, 13749), (53, 13944),

Gene: PinheadLarry_16 Start: 13369, Stop: 13719, Start Num: 18

Candidate Starts for PinheadLarry_16:

(Start: 18 @13369 has 240 MA's), (Start: 21 @13420 has 72 MA's), (23, 13432), (Start: 24 @13435 has 11 MA's), (26, 13444), (31, 13465), (53, 13660),

Gene: PinkYoshi_30 Start: 26781, Stop: 27101, Start Num: 19

Candidate Starts for PinkYoshi_30:

(Start: 19 @26781 has 54 MA's), (Start: 24 @26844 has 11 MA's), (Start: 27 @26856 has 2 MA's), (Start: 29 @26862 has 1 MA's), (30, 26871), (33, 26886), (35, 26907), (36, 26910), (38, 26925), (40, 26940), (41, 26952), (48, 27030), (58, 27090),

Gene: Pinkman_15 Start: 13260, Stop: 13559, Start Num: 21

Candidate Starts for Pinkman_15:

(Start: 18 @13209 has 240 MA's), (Start: 21 @13260 has 72 MA's), (23, 13272), (Start: 24 @13275 has 11 MA's), (26, 13284), (31, 13305), (53, 13500),

Gene: Pinnie_31 Start: 29132, Stop: 29491, Start Num: 19

Candidate Starts for Pinnie_31:

(Start: 19 @29132 has 54 MA's), (28, 29210), (30, 29222), (35, 29258), (36, 29261), (43, 29348), (47, 29384), (59, 29465),

Gene: Pipsqueak_16 Start: 13656, Stop: 14006, Start Num: 18

Candidate Starts for Pipsqueak_16:

(Start: 18 @13656 has 240 MA's), (Start: 21 @13707 has 72 MA's), (23, 13719), (Start: 24 @13722 has 11 MA's), (26, 13731), (31, 13752), (53, 13947),

Gene: Placalicious_15 Start: 13351, Stop: 13701, Start Num: 18

Candidate Starts for Placalicious_15:

(Start: 18 @13351 has 240 MA's), (Start: 21 @13402 has 72 MA's), (23, 13414), (Start: 24 @13417 has 11 MA's), (26, 13426), (31, 13447), (53, 13642),

Gene: Plagueis_30 Start: 26625, Stop: 26945, Start Num: 19

Candidate Starts for Plagueis_30:

(Start: 19 @26625 has 54 MA's), (Start: 24 @26688 has 11 MA's), (Start: 27 @26700 has 2 MA's), (Start: 29 @26706 has 1 MA's), (30, 26715), (33, 26730), (35, 26751), (36, 26754), (38, 26769), (40, 26784), (41, 26796), (48, 26874), (58, 26934),

Gene: Plmatters_16 Start: 13650, Stop: 14000, Start Num: 18

Candidate Starts for Plmatters_16:

(Start: 18 @13650 has 240 MA's), (Start: 21 @13701 has 72 MA's), (23, 13713), (Start: 24 @13716 has 11 MA's), (26, 13725), (31, 13746), (53, 13941),

Gene: Podrick_16 Start: 13641, Stop: 13991, Start Num: 18

Candidate Starts for Podrick_16:

(Start: 18 @13641 has 240 MA's), (Start: 21 @13692 has 72 MA's), (Start: 24 @13707 has 11 MA's), (26, 13716), (31, 13737), (53, 13932),

Gene: Pops_16 Start: 13704, Stop: 14003, Start Num: 21

Candidate Starts for Pops_16:

(Start: 18 @13653 has 240 MA's), (Start: 21 @13704 has 72 MA's), (23, 13716), (Start: 24 @13719 has 11 MA's), (26, 13728), (31, 13749), (53, 13944),

Gene: Poster_15 Start: 14361, Stop: 14681, Start Num: 21

Candidate Starts for Poster_15:

(1, 13947), (Start: 18 @14310 has 240 MA's), (Start: 21 @14361 has 72 MA's), (23, 14373), (26, 14385), (30, 14403), (37, 14448), (46, 14559),

Gene: Potter_15 Start: 13415, Stop: 13714, Start Num: 21

Candidate Starts for Potter_15:

(Start: 18 @13364 has 240 MA's), (Start: 21 @13415 has 72 MA's), (23, 13427), (Start: 24 @13430 has 11 MA's), (26, 13439), (31, 13460), (53, 13655),

Gene: Prickles_16 Start: 13695, Stop: 13994, Start Num: 21

Candidate Starts for Prickles_16:

(Start: 18 @13644 has 240 MA's), (Start: 21 @13695 has 72 MA's), (Start: 24 @13710 has 11 MA's), (26, 13719), (31, 13740), (53, 13935),

Gene: Prince_16 Start: 15534, Stop: 15905, Start Num: 18

Candidate Starts for Prince_16:

(Start: 18 @15534 has 240 MA's), (Start: 21 @15585 has 72 MA's), (23, 15597), (Start: 24 @15600 has 11 MA's), (26, 15609), (30, 15627), (46, 15783),

Gene: ProfessorX_16 Start: 13642, Stop: 13992, Start Num: 18

Candidate Starts for ProfessorX_16:

(Start: 18 @13642 has 240 MA's), (Start: 21 @13693 has 72 MA's), (23, 13705), (Start: 24 @13708 has 11 MA's), (26, 13717), (31, 13738), (53, 13933),

Gene: Puhltonio_16 Start: 13710, Stop: 14009, Start Num: 21

Candidate Starts for Puhltonio_16:

(Start: 18 @13659 has 240 MA's), (Start: 21 @13710 has 72 MA's), (23, 13722), (Start: 24 @13725 has 11 MA's), (26, 13734), (31, 13755), (53, 13950),

Gene: QueenBeane_16 Start: 13650, Stop: 14000, Start Num: 18

Candidate Starts for QueenBeane_16:

(Start: 18 @13650 has 240 MA's), (Start: 21 @13701 has 72 MA's), (23, 13713), (Start: 24 @13716 has 11 MA's), (26, 13725), (31, 13746), (53, 13941),

Gene: Quisquilliae_16 Start: 13665, Stop: 14015, Start Num: 18

Candidate Starts for Quisquilliae_16:

(Start: 18 @13665 has 240 MA's), (Start: 21 @13716 has 72 MA's), (23, 13728), (Start: 24 @13731 has 11 MA's), (26, 13740), (31, 13761), (53, 13956),

Gene: Rabbs_30 Start: 26873, Stop: 27193, Start Num: 19

Candidate Starts for Rabbs_30:

(Start: 19 @26873 has 54 MA's), (Start: 24 @26936 has 11 MA's), (Start: 27 @26948 has 2 MA's), (Start: 29 @26954 has 1 MA's), (30, 26963), (33, 26978), (35, 26999), (36, 27002), (38, 27017), (40, 27032), (41, 27044), (48, 27122), (58, 27182),

Gene: RedMaple_15 Start: 13662, Stop: 14012, Start Num: 18

Candidate Starts for RedMaple_15:

(Start: 18 @13662 has 240 MA's), (Start: 21 @13713 has 72 MA's), (23, 13725), (Start: 24 @13728 has 11 MA's), (26, 13737), (31, 13758), (53, 13953),

Gene: Remy19_30 Start: 26790, Stop: 27110, Start Num: 19

Candidate Starts for Remy19_30:

(Start: 19 @26790 has 54 MA's), (Start: 24 @26853 has 11 MA's), (Start: 27 @26865 has 2 MA's), (Start: 29 @26871 has 1 MA's), (30, 26880), (33, 26895), (35, 26916), (36, 26919), (38, 26934), (40, 26949), (41, 26961), (48, 27039), (58, 27099),

Gene: Renaissance_30 Start: 26790, Stop: 27110, Start Num: 19

Candidate Starts for Renaissance_30:

(Start: 19 @26790 has 54 MA's), (Start: 24 @26853 has 11 MA's), (Start: 27 @26865 has 2 MA's), (Start: 29 @26871 has 1 MA's), (30, 26880), (33, 26895), (35, 26916), (36, 26919), (38, 26934), (40, 26949), (41, 26961), (48, 27039), (58, 27099),

Gene: Ricotta_15 Start: 13374, Stop: 13724, Start Num: 18

Candidate Starts for Ricotta_15:

(Start: 18 @13374 has 240 MA's), (Start: 21 @13425 has 72 MA's), (23, 13437), (Start: 24 @13440 has 11 MA's), (26, 13449), (31, 13470), (53, 13665),

Gene: Riggan_16 Start: 13630, Stop: 13980, Start Num: 18

Candidate Starts for Riggan_16:

(Start: 18 @13630 has 240 MA's), (Start: 21 @13681 has 72 MA's), (23, 13693), (Start: 24 @13696 has 11 MA's), (26, 13705), (31, 13726), (53, 13921),

Gene: Rimu_15 Start: 13413, Stop: 13712, Start Num: 21

Candidate Starts for Rimu_15:

(Start: 18 @13362 has 240 MA's), (Start: 21 @13413 has 72 MA's), (23, 13425), (Start: 24 @13428 has 11 MA's), (26, 13437), (31, 13458), (53, 13653),

Gene: Rinke_20 Start: 17321, Stop: 17668, Start Num: 18

Candidate Starts for Rinke_20:

(Start: 18 @17321 has 240 MA's), (Start: 21 @17372 has 72 MA's), (22, 17375), (Start: 29 @17405 has 1 MA's), (36, 17453), (42, 17528), (51, 17579), (52, 17585), (53, 17588), (54, 17603),

Gene: Robyn_15 Start: 13223, Stop: 13573, Start Num: 18

Candidate Starts for Robyn_15:

(Start: 18 @13223 has 240 MA's), (Start: 21 @13274 has 72 MA's), (Start: 24 @13289 has 11 MA's), (26, 13298), (31, 13319), (53, 13514),

Gene: Roliet_16 Start: 13650, Stop: 14000, Start Num: 18

Candidate Starts for Roliet_16:

(Start: 18 @13650 has 240 MA's), (Start: 21 @13701 has 72 MA's), (23, 13713), (Start: 24 @13716 has 11 MA's), (26, 13725), (31, 13746), (53, 13941),

Gene: Roscoe_17 Start: 13891, Stop: 14241, Start Num: 18

Candidate Starts for Roscoe_17:

(Start: 18 @13891 has 240 MA's), (Start: 21 @13942 has 72 MA's), (23, 13954), (Start: 24 @13957 has 11 MA's), (26, 13966), (31, 13987), (53, 14182),

Gene: Roy17_16 Start: 13352, Stop: 13702, Start Num: 18

Candidate Starts for Roy17_16:

(Start: 18 @13352 has 240 MA's), (Start: 21 @13403 has 72 MA's), (23, 13415), (Start: 24 @13418 has 11 MA's), (26, 13427), (31, 13448), (53, 13643),

Gene: SDcharge11_16 Start: 13631, Stop: 13981, Start Num: 18

Candidate Starts for SDcharge11_16:

(Start: 18 @13631 has 240 MA's), (Start: 21 @13682 has 72 MA's), (Start: 24 @13697 has 11 MA's), (26, 13706), (31, 13727), (53, 13922),

Gene: Saguaro_18 Start: 16390, Stop: 16737, Start Num: 18

Candidate Starts for Saguaro_18:

(Start: 18 @16390 has 240 MA's), (Start: 24 @16456 has 11 MA's), (28, 16471),

Gene: Samaymay_16 Start: 13650, Stop: 14000, Start Num: 18

Candidate Starts for Samaymay_16:

(Start: 18 @13650 has 240 MA's), (Start: 21 @13701 has 72 MA's), (23, 13713), (Start: 24 @13716 has 11 MA's), (26, 13725), (31, 13746), (53, 13941),

Gene: SassyCat97_15 Start: 13357, Stop: 13707, Start Num: 18

Candidate Starts for SassyCat97_15:

(Start: 18 @13357 has 240 MA's), (Start: 21 @13408 has 72 MA's), (23, 13420), (Start: 24 @13423 has 11 MA's), (26, 13432), (31, 13453), (53, 13648),

Gene: Schadenfreude_15 Start: 13207, Stop: 13557, Start Num: 18

Candidate Starts for Schadenfreude_15:

(Start: 18 @13207 has 240 MA's), (Start: 21 @13258 has 72 MA's), (23, 13270), (Start: 24 @13273 has 11 MA's), (26, 13282), (31, 13303), (53, 13498),

Gene: Schiebel_30 Start: 26790, Stop: 27110, Start Num: 19

Candidate Starts for Schiebel_30:

(Start: 19 @26790 has 54 MA's), (Start: 24 @26853 has 11 MA's), (Start: 27 @26865 has 2 MA's), (Start: 29 @26871 has 1 MA's), (30, 26880), (33, 26895), (35, 26916), (36, 26919), (38, 26934), (40, 26949), (41, 26961), (48, 27039), (58, 27099),

Gene: Schueller_15 Start: 13399, Stop: 13698, Start Num: 21

Candidate Starts for Schueller_15:

(Start: 18 @13348 has 240 MA's), (Start: 21 @13399 has 72 MA's), (23, 13411), (Start: 24 @13414 has 11 MA's), (26, 13423), (31, 13444), (53, 13639),

Gene: Scoot17C_16 Start: 13702, Stop: 14001, Start Num: 21

Candidate Starts for Scoot17C_16:

(Start: 18 @13651 has 240 MA's), (Start: 21 @13702 has 72 MA's), (23, 13714), (Start: 24 @13717 has 11 MA's), (26, 13726), (31, 13747), (53, 13942),

Gene: Scrick_15 Start: 13370, Stop: 13720, Start Num: 18

Candidate Starts for Scrick_15:

(Start: 18 @13370 has 240 MA's), (Start: 21 @13421 has 72 MA's), (23, 13433), (Start: 24 @13436 has 11 MA's), (26, 13445), (31, 13466), (53, 13661),

Gene: Selr12_16 Start: 13375, Stop: 13725, Start Num: 18

Candidate Starts for Selr12_16:

(Start: 18 @13375 has 240 MA's), (Start: 21 @13426 has 72 MA's), (23, 13438), (Start: 24 @13441 has 11 MA's), (26, 13450), (31, 13471), (53, 13666),

Gene: Serendipitous_17 Start: 15447, Stop: 15791, Start Num: 18

Candidate Starts for Serendipitous_17:

(2, 15102), (3, 15189), (13, 15330), (Start: 18 @15447 has 240 MA's), (Start: 21 @15498 has 72 MA's), (25, 15519), (30, 15540), (42, 15654), (44, 15669),

Gene: Serendipity_16 Start: 13722, Stop: 14021, Start Num: 21

Candidate Starts for Serendipity_16:

(Start: 18 @13671 has 240 MA's), (Start: 21 @13722 has 72 MA's), (23, 13734), (Start: 24 @13737 has 11 MA's), (26, 13746), (31, 13767), (53, 13962),

Gene: Serpentine_0016 Start: 13653, Stop: 14003, Start Num: 18

Candidate Starts for Serpentine_0016:

(Start: 18 @13653 has 240 MA's), (Start: 21 @13704 has 72 MA's), (23, 13716), (Start: 24 @13719 has 11 MA's), (26, 13728), (31, 13749), (53, 13944),

Gene: ShaboiShabazz_30 Start: 26790, Stop: 27110, Start Num: 19

Candidate Starts for ShaboiShabazz_30:

(Start: 19 @26790 has 54 MA's), (Start: 24 @26853 has 11 MA's), (Start: 27 @26865 has 2 MA's), (Start: 29 @26871 has 1 MA's), (30, 26880), (33, 26895), (35, 26916), (36, 26919), (38, 26934), (40, 26949), (41, 26961), (48, 27039), (58, 27099),

Gene: Sheila_16 Start: 13642, Stop: 13992, Start Num: 18

Candidate Starts for Sheila_16:

(Start: 18 @13642 has 240 MA's), (Start: 21 @13693 has 72 MA's), (23, 13705), (Start: 24 @13708 has 11 MA's), (26, 13717), (31, 13738), (53, 13933),

Gene: ShiVal_16 Start: 13644, Stop: 13994, Start Num: 18

Candidate Starts for ShiVal_16:

(Start: 18 @13644 has 240 MA's), (Start: 21 @13695 has 72 MA's), (23, 13707), (Start: 24 @13710 has 11 MA's), (26, 13719), (31, 13740), (53, 13935),

Gene: Sigman_16 Start: 13692, Stop: 13991, Start Num: 21

Candidate Starts for Sigman_16:

(Start: 18 @13641 has 240 MA's), (Start: 21 @13692 has 72 MA's), (23, 13704), (Start: 24 @13707 has 11 MA's), (26, 13716), (31, 13737), (53, 13932),

Gene: SilverBell_16 Start: 13707, Stop: 14006, Start Num: 21

Candidate Starts for SilverBell_16:

(Start: 18 @13656 has 240 MA's), (Start: 21 @13707 has 72 MA's), (23, 13719), (Start: 24 @13722 has 11 MA's), (26, 13731), (31, 13752), (53, 13947),

Gene: Simielle_15 Start: 13342, Stop: 13692, Start Num: 18

Candidate Starts for Simielle_15:

(Start: 18 @13342 has 240 MA's), (Start: 21 @13393 has 72 MA's), (23, 13405), (Start: 24 @13408 has 11 MA's), (26, 13417), (31, 13438), (53, 13633),

Gene: Sizemore_30 Start: 26791, Stop: 27111, Start Num: 19

Candidate Starts for Sizemore_30:

(Start: 19 @26791 has 54 MA's), (Start: 24 @26854 has 11 MA's), (Start: 27 @26866 has 2 MA's), (Start: 29 @26872 has 1 MA's), (30, 26881), (33, 26896), (35, 26917), (36, 26920), (38, 26935), (40, 26950), (41, 26962), (48, 27040), (58, 27100),

Gene: Skippy_16 Start: 13635, Stop: 13985, Start Num: 18

Candidate Starts for Skippy_16:

(Start: 18 @13635 has 240 MA's), (Start: 21 @13686 has 72 MA's), (23, 13698), (Start: 24 @13701 has 11 MA's), (26, 13710), (31, 13731), (53, 13926),

Gene: Slatt_16 Start: 13667, Stop: 14017, Start Num: 18

Candidate Starts for Slatt_16:

(Start: 18 @13667 has 240 MA's), (Start: 21 @13718 has 72 MA's), (23, 13730), (Start: 24 @13733 has 11 MA's), (26, 13742), (31, 13763), (53, 13958),

Gene: Sneeze_30 Start: 26872, Stop: 27192, Start Num: 19

Candidate Starts for Sneeze_30:

(Start: 19 @26872 has 54 MA's), (Start: 24 @26935 has 11 MA's), (Start: 27 @26947 has 2 MA's), (Start: 29 @26953 has 1 MA's), (30, 26962), (33, 26977), (35, 26998), (36, 27001), (38, 27016), (40, 27031), (41, 27043), (48, 27121), (58, 27181),

Gene: Soile_16 Start: 13362, Stop: 13712, Start Num: 18

Candidate Starts for Soile_16:

(Start: 18 @13362 has 240 MA's), (Start: 21 @13413 has 72 MA's), (23, 13425), (Start: 24 @13428 has 11 MA's), (26, 13437), (31, 13458), (53, 13653),

Gene: Solosis_15 Start: 13369, Stop: 13719, Start Num: 18

Candidate Starts for Solosis_15:

(Start: 18 @13369 has 240 MA's), (Start: 21 @13420 has 72 MA's), (23, 13432), (Start: 24 @13435 has 11 MA's), (26, 13444), (31, 13465), (53, 13660),

Gene: Sophia_15 Start: 13357, Stop: 13707, Start Num: 18

Candidate Starts for Sophia_15:

(Start: 18 @13357 has 240 MA's), (Start: 21 @13408 has 72 MA's), (23, 13420), (Start: 24 @13423 has 11 MA's), (26, 13432), (31, 13453), (53, 13648),

Gene: Soto_16 Start: 13647, Stop: 13997, Start Num: 18

Candidate Starts for Soto_16:

(Start: 18 @13647 has 240 MA's), (Start: 21 @13698 has 72 MA's), (23, 13710), (Start: 24 @13713 has 11 MA's), (26, 13722), (31, 13743), (53, 13938),

Gene: Spartan300_16 Start: 13647, Stop: 13997, Start Num: 18

Candidate Starts for Spartan300_16:

(Start: 18 @13647 has 240 MA's), (Start: 21 @13698 has 72 MA's), (23, 13710), (Start: 24 @13713 has 11 MA's), (26, 13722), (31, 13743), (53, 13938),

Gene: Squid_16 Start: 13357, Stop: 13707, Start Num: 18

Candidate Starts for Squid_16:

(Start: 18 @13357 has 240 MA's), (Start: 21 @13408 has 72 MA's), (23, 13420), (Start: 24 @13423 has 11 MA's), (26, 13432), (31, 13453), (53, 13648),

Gene: Squiggle_16 Start: 13357, Stop: 13707, Start Num: 18

Candidate Starts for Squiggle_16:

(Start: 18 @13357 has 240 MA's), (Start: 21 @13408 has 72 MA's), (23, 13420), (Start: 24 @13423 has 11 MA's), (26, 13432), (31, 13453), (53, 13648),

Gene: Stargaze_30 Start: 28544, Stop: 28897, Start Num: 19

Candidate Starts for Stargaze_30:

(Start: 19 @28544 has 54 MA's), (22, 28595), (28, 28622), (30, 28634), (35, 28670), (36, 28673), (43, 28760), (47, 28796), (59, 28877),

Gene: Stinger_14 Start: 13873, Stop: 14244, Start Num: 18

Candidate Starts for Stinger_14:

(Start: 18 @13873 has 240 MA's), (Start: 21 @13924 has 72 MA's), (23, 13936), (26, 13948), (36, 14005), (37, 14011), (46, 14122), (47, 14131), (50, 14155),

Gene: Struggle_15 Start: 13203, Stop: 13553, Start Num: 18

Candidate Starts for Struggle_15:

(Start: 18 @13203 has 240 MA's), (Start: 21 @13254 has 72 MA's), (23, 13266), (Start: 24 @13269 has 11 MA's), (26, 13278), (31, 13299), (53, 13494),

Gene: Suffolk_16 Start: 13700, Stop: 13999, Start Num: 21

Candidate Starts for Suffolk_16:

(Start: 18 @13649 has 240 MA's), (Start: 21 @13700 has 72 MA's), (23, 13712), (Start: 24 @13715 has 11 MA's), (26, 13724), (31, 13745), (53, 13940),

Gene: Surely_16 Start: 13659, Stop: 14009, Start Num: 18

Candidate Starts for Surely_16:

(Start: 18 @13659 has 240 MA's), (Start: 21 @13710 has 72 MA's), (23, 13722), (Start: 24 @13725 has 11 MA's), (26, 13734), (31, 13755), (53, 13950),

Gene: Sweets_30 Start: 26848, Stop: 27105, Start Num: 24

Candidate Starts for Sweets_30:

(Start: 19 @26785 has 54 MA's), (Start: 24 @26848 has 11 MA's), (Start: 27 @26860 has 2 MA's), (Start: 29 @26866 has 1 MA's), (30, 26875), (33, 26890), (35, 26911), (36, 26914), (38, 26929), (40, 26944), (41, 26956), (48, 27034), (58, 27094),

Gene: Swiphy_16 Start: 13701, Stop: 14000, Start Num: 21

Candidate Starts for Swiphy_16:

(Start: 18 @13650 has 240 MA's), (Start: 21 @13701 has 72 MA's), (23, 13713), (Start: 24 @13716 has 11 MA's), (26, 13725), (31, 13746), (53, 13941),

Gene: Swish_16 Start: 13696, Stop: 13995, Start Num: 21

Candidate Starts for Swish_16:

(Start: 18 @13645 has 240 MA's), (Start: 21 @13696 has 72 MA's), (23, 13708), (Start: 24 @13711 has 11 MA's), (26, 13720), (31, 13741), (53, 13936),

Gene: Taheera_30 Start: 26974, Stop: 27234, Start Num: 24

Candidate Starts for Taheera_30:

(7, 26707), (10, 26764), (12, 26788), (Start: 19 @26911 has 54 MA's), (Start: 24 @26974 has 11 MA's), (Start: 27 @26986 has 2 MA's), (Start: 29 @26992 has 1 MA's), (30, 27001), (33, 27016), (35, 27037), (36, 27040), (38, 27055), (40, 27070), (41, 27082),

Gene: TallGrassMM_16 Start: 13426, Stop: 13725, Start Num: 21

Candidate Starts for TallGrassMM_16:

(Start: 18 @13375 has 240 MA's), (Start: 21 @13426 has 72 MA's), (23, 13438), (Start: 24 @13441 has 11 MA's), (26, 13450), (31, 13471), (53, 13666),

Gene: Telesworld_15 Start: 13357, Stop: 13707, Start Num: 18

Candidate Starts for Telesworld_15:

(Start: 18 @13357 has 240 MA's), (Start: 21 @13408 has 72 MA's), (23, 13420), (Start: 24 @13423 has 11 MA's), (26, 13432), (31, 13453), (53, 13648),

Gene: Terror_30 Start: 26974, Stop: 27234, Start Num: 24

Candidate Starts for Terror_30:

(7, 26707), (10, 26764), (12, 26788), (Start: 19 @26911 has 54 MA's), (Start: 24 @26974 has 11 MA's), (Start: 27 @26986 has 2 MA's), (Start: 29 @26992 has 1 MA's), (30, 27001), (33, 27016), (35, 27037), (36, 27040), (38, 27055), (40, 27070), (41, 27082),

Gene: Thonko_17 Start: 13214, Stop: 13540, Start Num: 18

Candidate Starts for Thonko_17:

(5, 13052), (Start: 18 @13214 has 240 MA's), (Start: 21 @13265 has 72 MA's), (26, 13289), (30, 13307),

Gene: Thora_16 Start: 13710, Stop: 14009, Start Num: 21

Candidate Starts for Thora_16:

(Start: 18 @13659 has 240 MA's), (Start: 21 @13710 has 72 MA's), (23, 13722), (Start: 24 @13725 has 11 MA's), (26, 13734), (31, 13755), (53, 13950),

Gene: ThreeOh3D2_16 Start: 13711, Stop: 14010, Start Num: 21

Candidate Starts for ThreeOh3D2_16:

(Start: 18 @13660 has 240 MA's), (Start: 21 @13711 has 72 MA's), (23, 13723), (Start: 24 @13726 has 11 MA's), (26, 13735), (31, 13756), (53, 13951),

Gene: Thunderbird_15 Start: 13410, Stop: 13709, Start Num: 21

Candidate Starts for Thunderbird_15:

(Start: 18 @13359 has 240 MA's), (Start: 21 @13410 has 72 MA's), (Start: 24 @13425 has 11 MA's), (26, 13434), (31, 13455), (53, 13650),

Gene: Timmi_15 Start: 13369, Stop: 13719, Start Num: 18

Candidate Starts for Timmi_15:

(Start: 18 @13369 has 240 MA's), (Start: 21 @13420 has 72 MA's), (23, 13432), (Start: 24 @13435 has 11 MA's), (26, 13444), (31, 13465), (53, 13660),

Gene: TinaBug_30 Start: 26866, Stop: 27105, Start Num: 29

Candidate Starts for TinaBug_30:

(Start: 19 @26785 has 54 MA's), (Start: 24 @26848 has 11 MA's), (Start: 27 @26860 has 2 MA's), (Start: 29 @26866 has 1 MA's), (30, 26875), (33, 26890), (35, 26911), (36, 26914), (38, 26929), (40, 26944), (41, 26956), (48, 27034), (58, 27094),

Gene: TomBombadil_16 Start: 13653, Stop: 14003, Start Num: 18

Candidate Starts for TomBombadil_16:

(Start: 18 @13653 has 240 MA's), (Start: 21 @13704 has 72 MA's), (23, 13716), (Start: 24 @13719 has 11 MA's), (26, 13728), (31, 13749), (53, 13944),

Gene: TomBrady_30 Start: 26791, Stop: 27111, Start Num: 19

Candidate Starts for TomBrady_30:

(Start: 19 @26791 has 54 MA's), (Start: 24 @26854 has 11 MA's), (Start: 27 @26866 has 2 MA's), (Start: 29 @26872 has 1 MA's), (30, 26881), (33, 26896), (35, 26917), (36, 26920), (38, 26935), (40, 26950), (41, 26962), (48, 27040), (58, 27100),

Gene: Tomlarah_16 Start: 13644, Stop: 13994, Start Num: 18

Candidate Starts for Tomlarah_16:

(Start: 18 @13644 has 240 MA's), (Start: 21 @13695 has 72 MA's), (23, 13707), (Start: 24 @13710 has 11 MA's), (26, 13719), (31, 13740), (53, 13935),

Gene: Toni_15 Start: 13355, Stop: 13705, Start Num: 18

Candidate Starts for Toni_15:

(Start: 18 @13355 has 240 MA's), (Start: 21 @13406 has 72 MA's), (23, 13418), (Start: 24 @13421 has 11 MA's), (26, 13430), (31, 13451), (53, 13646),

Gene: Tooj_16 Start: 13657, Stop: 14007, Start Num: 18

Candidate Starts for Tooj_16:

(Start: 18 @13657 has 240 MA's), (Start: 21 @13708 has 72 MA's), (23, 13720), (Start: 24 @13723 has 11 MA's), (26, 13732), (31, 13753), (53, 13948),

Gene: True_15 Start: 13358, Stop: 13708, Start Num: 18

Candidate Starts for True_15:

(Start: 18 @13358 has 240 MA's), (Start: 21 @13409 has 72 MA's), (23, 13421), (Start: 24 @13424 has 11 MA's), (26, 13433), (31, 13454), (53, 13649),

Gene: Trypo_16 Start: 13647, Stop: 13997, Start Num: 18

Candidate Starts for Trypo_16:

(Start: 18 @13647 has 240 MA's), (Start: 21 @13698 has 72 MA's), (23, 13710), (Start: 24 @13713 has 11 MA's), (26, 13722), (31, 13743), (53, 13938),

Gene: TyrionL_15 Start: 13209, Stop: 13559, Start Num: 18

Candidate Starts for TyrionL_15:

(Start: 18 @13209 has 240 MA's), (Start: 21 @13260 has 72 MA's), (23, 13272), (Start: 24 @13275 has 11 MA's), (26, 13284), (31, 13305), (53, 13500),

Gene: UAch1_16 Start: 13668, Stop: 14018, Start Num: 18

Candidate Starts for UAch1_16:

(Start: 18 @13668 has 240 MA's), (Start: 21 @13719 has 72 MA's), (23, 13731), (Start: 24 @13734 has 11 MA's), (26, 13743), (31, 13764), (53, 13959),

Gene: Ubuntu_35 Start: 30016, Stop: 30336, Start Num: 18

Candidate Starts for Ubuntu_35:

(Start: 18 @30016 has 240 MA's), (Start: 27 @30094 has 2 MA's), (30, 30109), (32, 30121), (35, 30151), (37, 30160), (41, 30196), (45, 30229), (52, 30283),

Gene: UncleHowie_16 Start: 13408, Stop: 13707, Start Num: 21

Candidate Starts for UncleHowie_16:

(Start: 18 @13357 has 240 MA's), (Start: 21 @13408 has 72 MA's), (23, 13420), (Start: 24 @13423 has 11 MA's), (26, 13432), (31, 13453), (53, 13648),

Gene: Usavi_16 Start: 13659, Stop: 14009, Start Num: 18

Candidate Starts for Usavi_16:

(Start: 18 @13659 has 240 MA's), (Start: 21 @13710 has 72 MA's), (Start: 24 @13725 has 11 MA's), (26, 13734), (31, 13755), (53, 13950),

Gene: Vaishali24_15 Start: 13361, Stop: 13660, Start Num: 21

Candidate Starts for Vaishali24_15:

(Start: 18 @13310 has 240 MA's), (Start: 21 @13361 has 72 MA's), (23, 13373), (Start: 24 @13376 has 11 MA's), (26, 13385), (31, 13406), (53, 13601),

Gene: Valjean_16 Start: 13650, Stop: 14000, Start Num: 18

Candidate Starts for Valjean_16:

(Start: 18 @13650 has 240 MA's), (Start: 21 @13701 has 72 MA's), (23, 13713), (Start: 24 @13716 has 11 MA's), (26, 13725), (31, 13746), (53, 13941),

Gene: Vaticameos_16 Start: 13348, Stop: 13698, Start Num: 18

Candidate Starts for Vaticameos_16:

(Start: 18 @13348 has 240 MA's), (Start: 21 @13399 has 72 MA's), (23, 13411), (Start: 24 @13414 has 11 MA's), (26, 13423), (31, 13444), (53, 13639),

Gene: Veritas_15 Start: 13197, Stop: 13547, Start Num: 18

Candidate Starts for Veritas_15:

(Start: 18 @13197 has 240 MA's), (Start: 21 @13248 has 72 MA's), (23, 13260), (Start: 24 @13263 has 11 MA's), (26, 13272), (31, 13293), (53, 13488),

Gene: Vincenzo_17 Start: 16153, Stop: 16518, Start Num: 18

Candidate Starts for Vincenzo_17:

(Start: 18 @16153 has 240 MA's), (Start: 21 @16207 has 72 MA's), (23, 16219), (26, 16231), (30, 16249),

Gene: VioletZ_16 Start: 15407, Stop: 15778, Start Num: 18

Candidate Starts for VioletZ_16:

(Start: 18 @15407 has 240 MA's), (Start: 21 @15458 has 72 MA's), (23, 15470), (Start: 24 @15473 has 11 MA's), (26, 15482), (30, 15500), (36, 15539), (46, 15656),

Gene: Virapocalypse_16 Start: 13642, Stop: 13992, Start Num: 18
Candidate Starts for Virapocalypse_16:
(Start: 18 @13642 has 240 MA's), (Start: 21 @13693 has 72 MA's), (23, 13705), (Start: 24 @13708 has 11 MA's), (26, 13717), (31, 13738), (53, 13933),

Gene: Virgeve_15 Start: 13414, Stop: 13713, Start Num: 21
Candidate Starts for Virgeve_15:
(Start: 18 @13363 has 240 MA's), (Start: 21 @13414 has 72 MA's), (23, 13426), (Start: 24 @13429 has 11 MA's), (26, 13438), (31, 13459), (53, 13654),

Gene: Vista_16 Start: 13653, Stop: 14003, Start Num: 18
Candidate Starts for Vista_16:
(Start: 18 @13653 has 240 MA's), (Start: 21 @13704 has 72 MA's), (23, 13716), (Start: 24 @13719 has 11 MA's), (26, 13728), (31, 13749), (53, 13944),

Gene: Vivaldi_16 Start: 13684, Stop: 14034, Start Num: 18
Candidate Starts for Vivaldi_16:
(Start: 18 @13684 has 240 MA's), (Start: 21 @13735 has 72 MA's), (23, 13747), (Start: 24 @13750 has 11 MA's), (26, 13759), (31, 13780), (53, 13975),

Gene: Vortex_16 Start: 13415, Stop: 13714, Start Num: 21
Candidate Starts for Vortex_16:
(Start: 18 @13364 has 240 MA's), (Start: 21 @13415 has 72 MA's), (23, 13427), (Start: 24 @13430 has 11 MA's), (26, 13439), (31, 13460), (53, 13655),

Gene: Waleliano_16 Start: 15377, Stop: 15748, Start Num: 18
Candidate Starts for Waleliano_16:
(Start: 18 @15377 has 240 MA's), (Start: 21 @15428 has 72 MA's), (23, 15440), (Start: 24 @15443 has 11 MA's), (26, 15452), (30, 15470), (36, 15509), (46, 15626),

Gene: Wallhey_15 Start: 13215, Stop: 13565, Start Num: 18
Candidate Starts for Wallhey_15:
(Start: 18 @13215 has 240 MA's), (Start: 21 @13266 has 72 MA's), (23, 13278), (Start: 24 @13281 has 11 MA's), (26, 13290), (31, 13311), (53, 13506),

Gene: Waterdiva_16 Start: 13651, Stop: 14001, Start Num: 18
Candidate Starts for Waterdiva_16:
(Start: 18 @13651 has 240 MA's), (Start: 21 @13702 has 72 MA's), (23, 13714), (Start: 24 @13717 has 11 MA's), (26, 13726), (31, 13747), (53, 13942),

Gene: Webster2_35 Start: 30016, Stop: 30336, Start Num: 18
Candidate Starts for Webster2_35:
(Start: 18 @30016 has 240 MA's), (Start: 27 @30094 has 2 MA's), (30, 30109), (32, 30121), (35, 30151), (37, 30160), (41, 30196), (45, 30229), (52, 30283),

Gene: Weher20_16 Start: 13641, Stop: 13991, Start Num: 18
Candidate Starts for Weher20_16:
(Start: 18 @13641 has 240 MA's), (Start: 21 @13692 has 72 MA's), (23, 13704), (Start: 24 @13707 has 11 MA's), (26, 13716), (31, 13737), (53, 13932),

Gene: Weirido19_31 Start: 28110, Stop: 28523, Start Num: 19
Candidate Starts for Weirido19_31:

(Start: 19 @28110 has 54 MA's), (Start: 27 @28185 has 2 MA's), (34, 28230), (39, 28266),

Gene: Wendigo_30 Start: 26871, Stop: 27110, Start Num: 29

Candidate Starts for Wendigo_30:

(Start: 19 @26790 has 54 MA's), (Start: 24 @26853 has 11 MA's), (Start: 27 @26865 has 2 MA's), (Start: 29 @26871 has 1 MA's), (30, 26880), (33, 26895), (35, 26916), (36, 26919), (38, 26934), (40, 26949), (41, 26961), (48, 27039), (58, 27099),

Gene: Windsor_15 Start: 13317, Stop: 13667, Start Num: 18

Candidate Starts for Windsor_15:

(Start: 18 @13317 has 240 MA's), (Start: 21 @13368 has 72 MA's), (23, 13380), (Start: 24 @13383 has 11 MA's), (26, 13392), (31, 13413), (53, 13608),

Gene: Wishmaker_34 Start: 30016, Stop: 30336, Start Num: 18

Candidate Starts for Wishmaker_34:

(Start: 18 @30016 has 240 MA's), (Start: 27 @30094 has 2 MA's), (30, 30109), (32, 30121), (35, 30151), (37, 30160), (41, 30196), (45, 30229), (52, 30283),

Gene: Xavier_15 Start: 13369, Stop: 13719, Start Num: 18

Candidate Starts for Xavier_15:

(Start: 18 @13369 has 240 MA's), (Start: 21 @13420 has 72 MA's), (23, 13432), (Start: 24 @13435 has 11 MA's), (26, 13444), (31, 13465), (53, 13660),

Gene: Yoshand_16 Start: 13705, Stop: 14004, Start Num: 21

Candidate Starts for Yoshand_16:

(Start: 18 @13654 has 240 MA's), (Start: 21 @13705 has 72 MA's), (23, 13717), (Start: 24 @13720 has 11 MA's), (26, 13729), (31, 13750), (53, 13945),

Gene: YouGoGlencoco_16 Start: 13647, Stop: 13997, Start Num: 18

Candidate Starts for YouGoGlencoco_16:

(Start: 18 @13647 has 240 MA's), (Start: 21 @13698 has 72 MA's), (23, 13710), (Start: 24 @13713 has 11 MA's), (26, 13722), (31, 13743), (53, 13938),

Gene: Zaider_17 Start: 13880, Stop: 14230, Start Num: 18

Candidate Starts for Zaider_17:

(Start: 18 @13880 has 240 MA's), (Start: 21 @13931 has 72 MA's), (23, 13943), (Start: 24 @13946 has 11 MA's), (26, 13955), (31, 13976), (53, 14171),

Gene: Zelda_16 Start: 13650, Stop: 14000, Start Num: 18

Candidate Starts for Zelda_16:

(Start: 18 @13650 has 240 MA's), (Start: 21 @13701 has 72 MA's), (23, 13713), (Start: 24 @13716 has 11 MA's), (26, 13725), (31, 13746), (53, 13941),

Gene: ZoMa_30 Start: 26790, Stop: 27110, Start Num: 19

Candidate Starts for ZoMa_30:

(Start: 19 @26790 has 54 MA's), (Start: 24 @26853 has 11 MA's), (Start: 27 @26865 has 2 MA's), (Start: 29 @26871 has 1 MA's), (30, 26880), (33, 26895), (35, 26916), (36, 26919), (38, 26934), (40, 26949), (41, 26961), (48, 27039), (58, 27099),

Gene: Zombie_30 Start: 26790, Stop: 27110, Start Num: 19

Candidate Starts for Zombie_30:

(Start: 19 @26790 has 54 MA's), (Start: 24 @26853 has 11 MA's), (Start: 27 @26865 has 2 MA's), (Start: 29 @26871 has 1 MA's), (30, 26880), (33, 26895), (35, 26916), (36, 26919), (38, 26934), (40,

26949), (41, 26961), (48, 27039), (58, 27099),

Gene: Zonia_16 Start: 13664, Stop: 14014, Start Num: 18

Candidate Starts for Zonia_16:

(Start: 18 @13664 has 240 MA's), (Start: 21 @13715 has 72 MA's), (23, 13727), (Start: 24 @13730 has 11 MA's), (26, 13739), (31, 13760), (53, 13955),