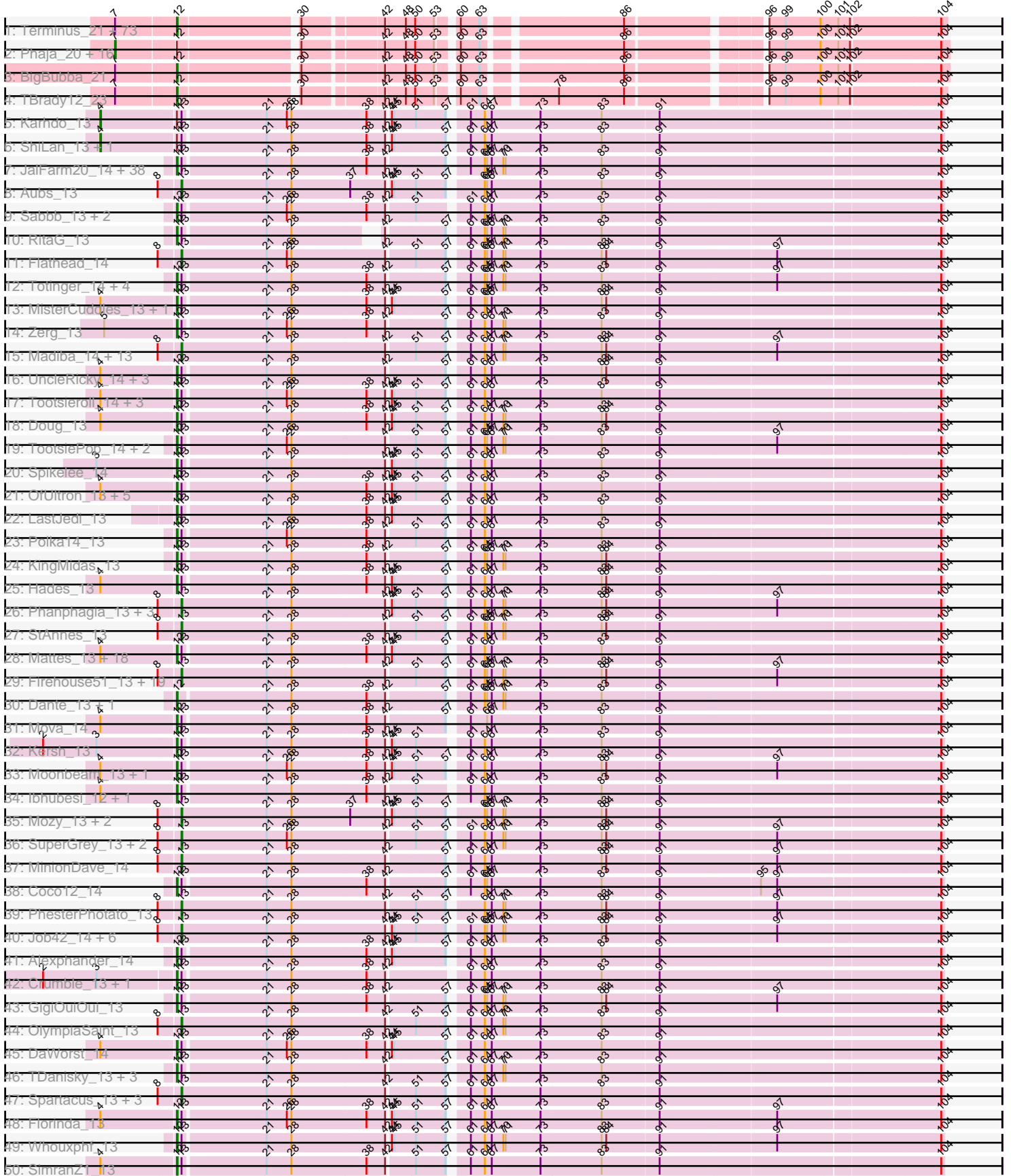
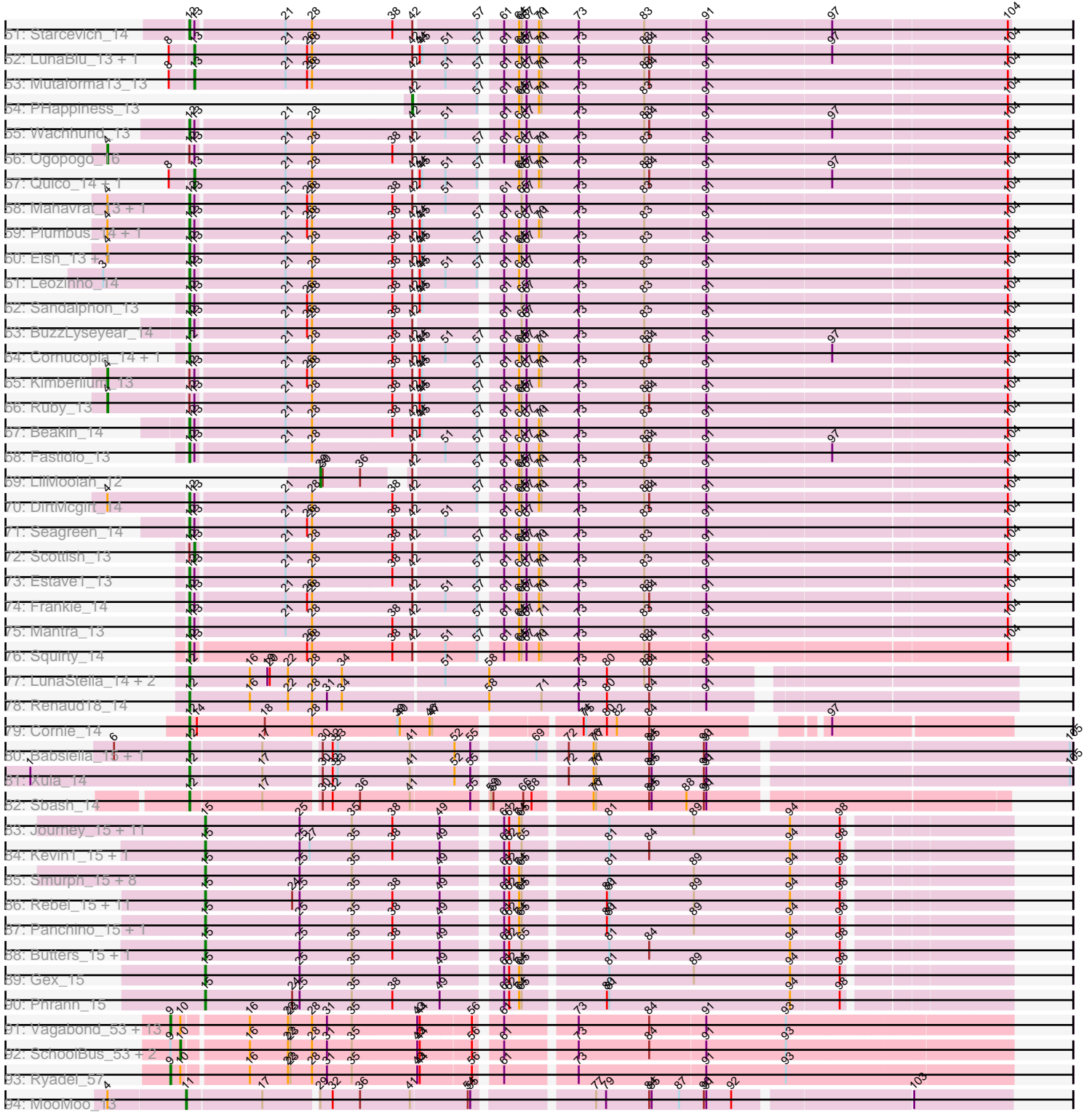


Pham 202593



Pham 202593



Note: Tracks are now grouped by subcluster and scaled. Switching in subcluster is indicated by changes in track color. Track scale is now set by default to display the region 30 bp upstream of start 1 to 30 bp downstream of the last possible start. If this default region is judged to be packed too tightly with annotated starts, the track will be further scaled to only show that region of the ORF with annotated starts. This action will be indicated by adding "Zoomed" to the title. For starts, yellow indicates the location of called starts comprised solely of Glimmer/GeneMark auto-annotations, green indicates the location of called starts with at least 1 manual gene annotation.

Pham 202593 Report

This analysis was run 01/18/25 on database version 583.

Pham number 202593 has 372 members, 1 are drafts.

Phages represented in each track:

- Track 1 : Terminus_21, Goldilocks_22, Command613_22, Xandras_23, Willez_20, YassJohnny_21, Traaww1_18, Holt_22, Youngblood_21, Adnama_23, Marshmallow_21, Flypotenuse_19, Buck_20, Miniwave_21, Asriel_20, Lilizi_23, MPhalcon_20, Cookies_21, Icee_20, BadStone_20, Inca_20, Stark_22, Gemini_23, Filch_22, Moldemort_22, Emmina_21, FireRed_20, Barbarian_20, Sotrice96_21, NelitzaMV_21, Tomaszewski_20, Murica_19, GooberAzure_23, AmericanBeauty_23, Elite2014_20, Bench_23, Hoonter_23, Thresher_22, Misfit_21, ChosenOne_20, DoctorDiddles_21, Henry_20, ChotaBhai_21, Paperbeatsrock_23, Simpliphy_22, Harella_19, Lilpickle_20, Argent26_23, ShamWow_21, MadamMonkfish_21, Highbury_22, NoSleep_22, xkcd_21, HanKaySha_22, OrionPax_22, Wiggin_23, MISSy_20, Cactus_22, Balomoji_20, Gage_23, JeTaime_23, Saints25_22, Kimchi_23, Stank_23, ShereKhan_23, Easy2Say_22, StolenFromERC_23, Tuco_21, Quallification_22, Rimmer_20, TeardropMSU_20, GoldenSpark_23, Sassay_20, Tarkin_23
- Track 2 : Phaja_20, Myrale_21, ABCat_20, IHOP_20, Teaspoon_21, Pharsalus_22, Gator_19, StellaBean_21, Czyszccon1_22, CrystalP_21, Nimrod_21, SophKB_21, Glexan_19, Hopey_22, Maxxinista_22, Dusk_20, Kanye_23
- Track 3 : BigBubba_21
- Track 4 : TBrady12_23
- Track 5 : Karhdo_13
- Track 6 : ShiLan_13, ByChance_13
- Track 7 : JalFarm20_14, Clifton_13, Rockne_13, BlueCrab_13, Cerasum_14, VRedHorse_13, Pacc40_13, Gandalph_13, Phatniss_13, Strokeseat_13, OwlsT2W_14, BigPhil_14, Daenerys_13, OldBen_13, Radiance_13, Nitzel_14, Pippy_12, Nimbo_13, Blexus_13, Deb65_13, Gorge_13, Hlubikazi_13, Inventum_13, Pollywog_14, Dorothy_13, Leperchaun_13, Velveteen_14, Eradicator_13, JoeyJr_13, Brocalys_13, Saal_13, Geralt_13, BodEinwohner17_13, Mandlovu_13, Sarma624_14, Sassafras_13, Latretium_13, Kingsley_14, Koella_13
- Track 8 : Aubs_13
- Track 9 : Sabbb_13, Poenanya_13, Doomphist_13
- Track 10 : RitaG_13
- Track 11 : Flathead_14
- Track 12 : Totinger_14, DosHalletts_14, Awesomesauce_14, LittleShirley_14, Piper2020_14
- Track 13 : MisterCuddles_13, Girr_13
- Track 14 : Zerg_13

- Track 15 : Madiba_14, MilanaBonita_14, DotProduct_13, EleanorGeorge_13, XFactor_13, ShroomBoi_13, Phalconet_13, Hamulus_13, Phasih_13, Bipolar_13, DillTech15_13, Ardmore_12, Akhila_14, Filuzino_13
- Track 16 : UncleRicky_14, Lorde_14, Drago_14, Enby_14
- Track 17 : Tootsieroll_14, Ramsey_14, Stap_14, RockyHorror_14
- Track 18 : Doug_13
- Track 19 : TootsiePop_14, DocMcStuffins_14, Misha28_14
- Track 20 : Spikelee_14
- Track 21 : OfUltron_13, Llama_13, Modragons_13, Fancypants_13, Sebastian_13, Ochi17_13
- Track 22 : LastJedi_13
- Track 23 : Polka14_13
- Track 24 : KingMidas_13
- Track 25 : Hades_13
- Track 26 : Phanphagia_13, Shauna1_12, Bobi_14, Krakatau_14
- Track 27 : StAnnes_13
- Track 28 : Mattes_13, Maravista_13, Nivrat_13, BobaPhett_13, Burwell21_13, SwagPiggett_13, Philus_13, Donkeykong_12, ShowerHandel_13, Bubbles123_13, Yorick_13, Jarcob_13, Martik_13, Zizzle_13, James_13, FreddyB_13, Cabrinians_13, Priscilla_13, Lizziana_13
- Track 29 : Firehouse51_13, SG4_13, GUmble_12, Taj_13, Chuckly_13, Byougenkin_13, Royals2015_13, KristaRAM_14, Ovechkin_13, DeadP_13, SassyB_13, Whatsapiecost_13, Veteran_13, Melissauren88_13, QuickMath_13, PopTart_13, Tweety_12, Fruitloop_13, Wee_12, CaptainTrips_14
- Track 30 : Dante_13, Che8_13
- Track 31 : Mova_14
- Track 32 : Kersh_13
- Track 33 : Moonbeam_13, Rialto_14
- Track 34 : lbhubesi_12, Harley_13
- Track 35 : Mozy_13, ArcusAngelus_13, Chevrolet_13
- Track 36 : SuperGrey_13, Rita_13, Kenuha5_13
- Track 37 : MinionDave_14
- Track 38 : Coco12_14
- Track 39 : PhesterPhotato_13
- Track 40 : Job42_14, MilleniumForce_14, SiSi_13, Batiatus_13, Emma_13, DLane_12, Galactic_13
- Track 41 : Alexphander_14
- Track 42 : Crumble_13, NormanBulbieJr_13
- Track 43 : GigiOuiOui_13
- Track 44 : OlympiaSaint_13
- Track 45 : DaWorst_14
- Track 46 : TDanisky_13, MadMen_13, Sparkdehlily_13, DRBy19_13
- Track 47 : Spartacus_13, Guppsters_13, WillSterrel_13, IrishSherpFalk_13
- Track 48 : Florinda_13
- Track 49 : Whouxphf_13
- Track 50 : SimranZ1_13
- Track 51 : Starcevich_14
- Track 52 : LunaBlu_13, Hegedechwinu_14
- Track 53 : Mutaforma13_13
- Track 54 : PHappiness_13
- Track 55 : Wachhund_13
- Track 56 : Ogopogo_16
- Track 57 : Quico_14, Girafales_14

- Track 58 : Mahavrat_13, Juniper1_13
- Track 59 : Plumbus_14, Juice456_14
- Track 60 : Eish_13, Spoonbill_13
- Track 61 : Leozinho_14
- Track 62 : Sandalphon_13
- Track 63 : BuzzLyseyear_14
- Track 64 : Cornucopia_14, Marker_14
- Track 65 : Kimberlium_13
- Track 66 : Ruby_13
- Track 67 : Beakin_14
- Track 68 : Fastidio_13
- Track 69 : LilMoolah_12
- Track 70 : DirtMcgirt_14
- Track 71 : Seagreen_14
- Track 72 : Scottish_13
- Track 73 : Estave1_13
- Track 74 : Frankie_14
- Track 75 : Mantra_13
- Track 76 : Squirty_14
- Track 77 : LunaStella_14, ThetaBob_14, TChen_14
- Track 78 : Renaud18_14
- Track 79 : Cornie_14
- Track 80 : Babsiella_15, QueenHazel_15
- Track 81 : Xula_14
- Track 82 : Sbash_14
- Track 83 : Journey_15, Andies_15, Fulbright_15, Silvy_15, Melville_15, Charlie_15, Magsby_15, Philonius_15, Xeno_15, Aggie_15, Chewbacca_15, Tapioca_15
- Track 84 : Kevin1_15, MichelleMyBell_15
- Track 85 : Smurph_15, Schnauzer_15, Carcharodon_15, Parmesanjohn_15, Silvafighter_15, Duplicity_15, Xerxes_15, Pipsqueaks_15, Phloss_15
- Track 86 : Rebel_15, Redi_15, PhancyPhin_15, Shweta_15, ShrimpFriedEgg_15, Snekmaggedon_15, Nenae_15, Raymond7_15, Jamie19_15, Hanako_15, BabeRuth_15, SpongeBob_15
- Track 87 : Panchino_15, SkinnyPete_15
- Track 88 : Butters_15, Rubeelu_15
- Track 89 : Gex_15
- Track 90 : Phrann_15
- Track 91 : Vagabond_53, Krili_52, NiebruSaylor_52, Mori_52, Shida_53, Murai_53, Familton_54, Winget_54, TelAviv_50, Catdawg_53, Blessica_54, YungJamal_56, Zakhe101_53, Vorrps_51
- Track 92 : SchoolBus_53, Smooch_55, JangDynasty_53
- Track 93 : Ryadel_57
- Track 94 : MooMoo_13

Summary of Final Annotations (See graph section above for start numbers):

The start number called the most often in the published annotations is 12, it was called in 220 of the 371 non-draft genes in the pham.

Genes that call this "Most Annotated" start:

- Adnama_23, Alexphander_14, AmericanBeauty_23, Argent26_23, Asriel_20, Awesomesauce_14, Babsiella_15, BadStone_20, Balomoji_20, Barbarian_20, Beakin_14, Bench_23, BigBubba_21, BigPhil_14, Blexus_13, BlueCrab_13, BobaPhett_13, BodEinwohner17_13, Brocalys_13, Bubbles123_13, Buck_20, Burwell21_13, BuzzLyseyear_14, Cabrinians_13, Cactus_22, Cerasum_14, Che8_13, ChosenOne_20, ChotaBhai_21, Clifton_13, Coco12_14, Command613_22, Cookies_21, Cornie_14, Cornucopia_14, Crumble_13, DRBy19_13, DaWorst_14, Daenerys_13, Dante_13, Deb65_13, DirtMcgirt_14, DocMcStuffins_14, DoctorDiddles_21, Donkeykong_12, Doomphist_13, Dorothy_13, DosHalletts_14, Doug_13, Drago_14, Easy2Say_22, Eish_13, Elite2014_20, Emmina_21, Enby_14, Eradicator_13, Estave1_13, Fancypants_13, Fastidio_13, Filch_22, FireRed_20, Florinda_13, Flypotenuse_19, Frankie_14, FreddyB_13, Gage_23, Gandolph_13, Gemini_23, Geralt_13, GigiOuiOui_13, Girr_13, GoldenSpark_23, Goldilocks_22, GooberAzure_23, Gorge_13, Hades_13, HanKaySha_22, Harella_19, Harley_13, Henry_20, Highbury_22, Hlubikazi_13, Holt_22, Hoonter_23, Ibhubesi_12, Icee_20, Inca_20, Inventum_13, JalFarm20_14, James_13, Jarcob_13, JeTaime_23, JoeyJr_13, Juice456_14, Juniper1_13, Kersh_13, Kimchi_23, KingMidas_13, Kingsley_14, Koella_13, LastJedi_13, Latretium_13, Leozinho_14, Leperchaun_13, Lilizi_23, Lilpickle_20, LittleShirley_14, Lizziana_13, Llama_13, Lorde_14, LunaStella_14, MISSy_20, MPhalcon_20, MadMen_13, MadamMonkfish_21, Mahavrat_13, Mandlovu_13, Mantra_13, Maravista_13, Marker_14, Marshmallow_21, Martik_13, Mattes_13, Miniwave_21, Misfit_21, Misha28_14, MisterCuddles_13, Modragons_13, Moldemort_22, Moonbeam_13, Mova_14, Murica_19, NelitzaMV_21, Nimbo_13, Nitzel_14, Nivrat_13, NoSleep_22, NormanBulbieJr_13, Ochi17_13, OfUltron_13, OldBen_13, OrionPax_22, OwlsT2W_14, Pacc40_13, Paperbeatsrock_23, Phatniss_13, Philus_13, Piper2020_14, Pippy_12, Plumbus_14, Poenanya_13, Polka14_13, Pollywog_14, Priscilla_13, Qualification_22, QueenHazel_15, Radiance_13, Ramsey_14, Renaud18_14, Rialto_14, Rimmer_20, RitaG_13, Rockne_13, RockyHorror_14, Saal_13, Sabbb_13, Saints25_22, Sandalphon_13, Sarma624_14, Sassafra_13, Sassay_20, Sbash_14, Seabastian_13, Seagreen_14, ShamWow_21, ShereKhan_23, ShowerHandel_13, Simpliphy_22, SimranZ1_13, Sotrice96_21, Sparkdehlily_13, Spikelee_14, Spoonbill_13, Squirty_14, Stank_23, Stap_14, Starcevic_14, Stark_22, StolenFromERC_23, Strokeseat_13, SwagPiggett_13, TBrady12_23, TChen_14, TDanisky_13, Tarkin_23, TeardropMSU_20, Terminus_21, ThetaBob_14, Thresher_22, Tomaszewski_20, TootsiePop_14, Tootsieroll_14, Totinger_14, Traaww1_18, Tuco_21, UncleRicky_14, VRedHorse_13, Velveteen_14, Wachhund_13, Whouxphf_13, Wiggin_23, Willez_20, Xandras_23, Xula_14, YassJohnny_21, Yorick_13, Youngblood_21, Zerg_13, Zizzle_13, xkcd_21,

Genes that have the "Most Annotated" start but do not call it:

- ABCat_20, ByChance_13, CrystalP_21, Czystczon1_22, Dusk_20, Gator_19, Glexan_19, Hopeny_22, IHOP_20, Kanye_23, Karhdo_13, Kimberlium_13, Maxxinista_22, Myrale_21, Nimrod_21, Ogopogo_16, Phaja_20, Pharsalus_22, Ruby_13, Scottish_13, ShiLan_13, SophKB_21, StellaBean_21, Teaspoon_21,

Genes that do not have the "Most Annotated" start:

- Aggie_15, Akhila_14, Andies_15, ArcusAngelus_13, Ardmore_12, Aubs_13, BabeRuth_15, Batiatus_13, Bipolar_13, Blessica_54, Bobi_14, Butters_15, Byougenkin_13, CaptainTrips_14, Carcharodon_15, Catdawg_53, Charlie_15, Chevrolet_13, Chewbacca_15, Chuckly_13, DLane_12, DeadP_13, DillTech15_13, DotProduct_13, Duplicity_15, EleanorGeorge_13, Emma_13, Familton_54, Filuzino_13, Firehouse51_13, Flathead_14, Fruitloop_13, Fulbright_15, GUmbie_12,

Galactic_13, Gex_15, Girafales_14, Guppsters_13, Hamulus_13, Hanako_15, Hegedechwinu_14, IrishSherpFalk_13, Jamie19_15, JangDynasty_53, Job42_14, Journey_15, Kenuha5_13, Kevin1_15, Krakatau_14, Krili_52, KristaRAM_14, LilMoolah_12, LunaBlu_13, Madiba_14, Magsby_15, Melissauren88_13, Melville_15, MichelleMyBell_15, MilanaBonita_14, MilleniumForce_14, MinionDave_14, MooMoo_13, Mori_52, Mozy_13, Murai_53, Mutaforma13_13, Nенаe_15, NiebruSaylor_52, OlympiaSaint_13, Ovechkin_13, PHappiness_13, Panchino_15, Parmesanjohn_15, Phalconet_13, PhancyPhin_15, Phanphagia_13, Phasih_13, PhesterPhotato_13, Philonius_15, Phloss_15, Phrann_15, Pipsqueaks_15, PopTart_13, QuickMath_13, Quico_14, Raymond7_15, Rebel_15, Redi_15, Rita_13, Royals2015_13, Rubeelu_15, Ryadel_57, SG4_13, SassyB_13, Schnauzer_15, SchoolBus_53, Shauna1_12, Shida_53, ShrimpFriedEgg_15, ShroomBoi_13, Shweta_15, SiSi_13, Silvafighter_15, Silvy_15, SkinnyPete_15, Smooch_55, Smurph_15, Snekmaggon_15, Spartacus_13, SpongeBob_15, StAnnes_13, SuperGrey_13, Taj_13, Tapioca_15, TelAviv_50, Tweety_12, Vagabond_53, Veteran_13, Vorrrps_51, Wee_12, Whatsapiecost_13, WillSterrel_13, Winget_54, XFactor_13, Xeno_15, Xerxes_15, YungJamal_56, Zakhe101_53,

Summary by start number:

Start 4:

- Found in 59 of 372 (15.9%) of genes in pham
- Manual Annotations of this start: 6 of 371
- Called 10.2% of time when present
- Phage (with cluster) where this start called: ByChance_13 (F1), Karhdo_13 (F1), Kimberlium_13 (F1), Ogotogo_16 (F1), Ruby_13 (F1), ShiLan_13 (F1),

Start 7:

- Found in 93 of 372 (25.0%) of genes in pham
- Manual Annotations of this start: 17 of 371
- Called 18.3% of time when present
- Phage (with cluster) where this start called: ABCat_20 (E), CrystalP_21 (E), Czystczon1_22 (E), Dusk_20 (E), Gator_19 (E), Glexan_19 (E), Hopey_22 (E), IHOP_20 (E), Kanye_23 (E), Maxxinista_22 (E), Myrale_21 (E), Nimrod_21 (E), Phaja_20 (E), Pharsalus_22 (E), SophKB_21 (E), StellaBean_21 (E), Teaspoon_21 (E),

Start 9:

- Found in 18 of 372 (4.8%) of genes in pham
- Manual Annotations of this start: 15 of 371
- Called 83.3% of time when present
- Phage (with cluster) where this start called: Blessica_54 (O), Catdawg_53 (O), Familton_54 (O), Krili_52 (O), Mori_52 (O), Murai_53 (O), NiebruSaylor_52 (O), Ryadel_57 (O), Shida_53 (O), TelAviv_50 (O), Vagabond_53 (O), Vorrrps_51 (O), Winget_54 (O), YungJamal_56 (O), Zakhe101_53 (O),

Start 10:

- Found in 18 of 372 (4.8%) of genes in pham
- Manual Annotations of this start: 3 of 371
- Called 16.7% of time when present
- Phage (with cluster) where this start called: JangDynasty_53 (O), SchoolBus_53 (O), Smooch_55 (O),

Start 11:

- Found in 1 of 372 (0.3%) of genes in pham
- Manual Annotations of this start: 1 of 371
- Called 100.0% of time when present
- Phage (with cluster) where this start called: MooMoo_13 (singleton),

Start 12:

- Found in 244 of 372 (65.6%) of genes in pham
- Manual Annotations of this start: 220 of 371
- Called 90.2% of time when present
- Phage (with cluster) where this start called: Adnama_23 (E), Alexphander_14 (F1), AmericanBeauty_23 (E), Argent26_23 (E), Asriel_20 (E), Awesomesauce_14 (F1), Babsiella_15 (I1), BadStone_20 (E), Balomoji_20 (E), Barbarian_20 (E), Beakin_14 (F1), Bench_23 (E), BigBubba_21 (E), BigPhil_14 (F1), Blexus_13 (F1), BlueCrab_13 (F1), BobaPhett_13 (F1), BodEinwohner17_13 (F1), Brocalys_13 (F1), Bubbles123_13 (F1), Buck_20 (E), Burwell21_13 (F1), BuzzLyseyear_14 (F1), Cabrinians_13 (F1), Cactus_22 (E), Cerasum_14 (F1), Che8_13 (F1), ChosenOne_20 (E), ChotaBhai_21 (E), Clifton_13 (F1), Coco12_14 (F1), Command613_22 (E), Cookies_21 (E), Cornie_14 (F5), Cornucopia_14 (F1), Crumble_13 (F1), DRBy19_13 (F1), DaWorst_14 (F1), Daenerys_13 (F1), Dante_13 (F1), Deb65_13 (F1), DirtMcgirt_14 (F1), DocMcStuffins_14 (F1), DoctorDiddles_21 (E), Donkeykong_12 (F1), Doomphist_13 (F1), Dorothy_13 (F1), DosHalletts_14 (F1), Doug_13 (F1), Drago_14 (F1), Easy2Say_22 (E), Eish_13 (F1), Elite2014_20 (E), Emmina_21 (E), Enby_14 (F1), Eradicator_13 (F1), Estave1_13 (F1), Fancypants_13 (F1), Fastidio_13 (F1), Filch_22 (E), FireRed_20 (E), Florinda_13 (F1), Flypotenuse_19 (E), Frankie_14 (F1), FreddyB_13 (F1), Gage_23 (E), Gandolph_13 (F1), Gemini_23 (E), Geralt_13 (F1), GigiOuiOui_13 (F1), Girr_13 (F1), GoldenSpark_23 (E), Goldilocks_22 (E), GooberAzure_23 (E), Gorge_13 (F1), Hades_13 (F1), HanKaySha_22 (E), Harella_19 (E), Harley_13 (F1), Henry_20 (E), Highbury_22 (E), Hlubikazi_13 (F1), Holt_22 (E), Hoonter_23 (E), Ibhubesi_12 (F1), Icee_20 (E), Inca_20 (E), Inventum_13 (F1), JaFarm20_14 (F1), James_13 (F1), Jarcob_13 (F1), JeTaime_23 (E), JoeyJr_13 (F1), Juice456_14 (F1), Juniper1_13 (F1), Kersh_13 (F1), Kimchi_23 (E), KingMidas_13 (F1), Kingsley_14 (F1), Koella_13 (F1), LastJedi_13 (F1), Latretium_13 (F1), Leozinho_14 (F1), Leperchaun_13 (F1), Lilizi_23 (E), Lilpickle_20 (E), LittleShirley_14 (F1), Lizziana_13 (F1), Llama_13 (F1), Lorde_14 (F1), LunaStella_14 (F4), MISSy_20 (E), MPhalcon_20 (E), MadMen_13 (F1), MadamMonkfish_21 (E), Mahavrat_13 (F1), Mandlovu_13 (F1), Mantra_13 (F1), Maravista_13 (F1), Marker_14 (F1), Marshmallow_21 (E), Martik_13 (F1), Mattes_13 (F1), Miniwave_21 (E), Misfit_21 (E), Misha28_14 (F1), MisterCuddles_13 (F1), Modragons_13 (F1), Moldemort_22 (E), Moonbeam_13 (F1), Mova_14 (F1), Murica_19 (E), NelitzaMV_21 (E), Nimbo_13 (F1), Nitzel_14 (F1), Nivrat_13 (F1), NoSleep_22 (E), NormanBulbieJr_13 (F1), Ochi17_13 (F1), OfUltron_13 (F1), OldBen_13 (F1), OrionPax_22 (E), OwlsT2W_14 (F1), Pacc40_13 (F1), Paperbeatsrock_23 (E), Phatniss_13 (F1), Philus_13 (F1), Piper2020_14 (F1), Pippy_12 (F1), Plumbus_14 (F1), Poenanya_13 (F1), Polka14_13 (F1), Pollywog_14 (F1), Priscilla_13 (F1), Quallification_22 (E), QueenHazel_15 (I1), Radiance_13 (F1), Ramsey_14 (F1), Renaud18_14 (F4), Rialto_14 (F1), Rimmer_20 (E), RitaG_13 (F1), Rockne_13 (F1), RockyHorror_14 (F1), Saal_13 (F1), Sabbb_13 (F1), Saints25_22 (E), Sandalphon_13 (F1), Sarma624_14 (F1), Sassafras_13 (F1), Sassay_20 (E), Sbash_14 (I2), Seabastian_13 (F1), Seagreen_14 (F1), ShamWow_21 (E), ShereKhan_23 (E), ShowerHandel_13 (F1), Simpliphy_22 (E), SimranZ1_13 (F1), Sotrice96_21 (E), Sparkdehlily_13 (F1), Spikelee_14 (F1), Spoonbill_13 (F1), Squirry_14 (F3), Stank_23 (E), Stap_14 (F1), Starcevich_14 (F1), Stark_22 (E),

StolenFromERC_23 (E), Strokeseat_13 (F1), SwagPigglett_13 (F1), TBrady12_23 (E), TChen_14 (F4), TDanisky_13 (F1), Tarkin_23 (E), TeardropMSU_20 (E), Terminus_21 (E), ThetaBob_14 (F4), Thresher_22 (E), Tomaszewski_20 (E), TootsiePop_14 (F1), Tootsieroll_14 (F1), Totinger_14 (F1), Traaww1_18 (E), Tuco_21 (E), UncleRicky_14 (F1), VRedHorse_13 (F1), Velveteen_14 (F1), Wachhund_13 (F1), Whouxphf_13 (F1), Wiggin_23 (E), Willez_20 (E), Xandras_23 (E), Xula_14 (I1), YassJohnny_21 (E), Yorick_13 (F1), Youngblood_21 (E), Zerg_13 (F1), Zizzle_13 (F1), xkcd_21 (E),

Start 13:

- Found in 204 of 372 (54.8%) of genes in pham
- Manual Annotations of this start: 66 of 371
- Called 32.8% of time when present
- Phage (with cluster) where this start called: Akhila_14 (F1), ArcusAngelus_13 (F1), Ardmore_12 (F1), Aubs_13 (F1), Batiatus_13 (F1), Bipolar_13 (F1), Bobi_14 (F1), Byougenkin_13 (F1), CaptainTrips_14 (F1), Chevrolet_13 (F1), Chuckly_13 (F1), DLane_12 (F1), DeadP_13 (F1), DillTech15_13 (F1), DotProduct_13 (F1), EleanorGeorge_13 (F1), Emma_13 (F1), Filuzino_13 (F1), Firehouse51_13 (F1), Flathead_14 (F1), Fruitloop_13 (F1), GUmble_12 (F1), Galactic_13 (F1), Girafales_14 (F1), Guppsters_13 (F1), Hamulus_13 (F1), Hegedechwinu_14 (F1), IrishSherpFalk_13 (F1), Job42_14 (F1), Kenuha5_13 (F1), Krakatau_14 (F1), KristaRAM_14 (F1), LunaBlu_13 (F1), Madiba_14 (F1), Melissauren88_13 (F1), MilanaBonita_14 (F1), MilleniumForce_14 (F1), MinionDave_14 (F1), Mozy_13 (F1), Mutaforma13_13 (F1), OlympiaSaint_13 (F1), Ovechkin_13 (F1), Phalconet_13 (F1), Phanphagia_13 (F1), Phasih_13 (F1), PhesterPhotato_13 (F1), PopTart_13 (F1), QuickMath_13 (F1), Quico_14 (F1), Rita_13 (F1), Royals2015_13 (F1), SG4_13 (F1), SassyB_13 (F1), Scottish_13 (F1), Shauna1_12 (F1), ShroomBoi_13 (F1), SiSi_13 (F1), Spartacus_13 (F1), StAnnes_13 (F1), SuperGrey_13 (F1), Taj_13 (F1), Tweety_12 (F1), Veteran_13 (F1), Wee_12 (F1), Whatsapiecost_13 (F1), WillSterrel_13 (F1), XFactor_13 (F1),

Start 15:

- Found in 41 of 372 (11.0%) of genes in pham
- Manual Annotations of this start: 41 of 371
- Called 100.0% of time when present
- Phage (with cluster) where this start called: Aggie_15 (N), Andies_15 (N), BabeRuth_15 (N), Butters_15 (N), Carcharodon_15 (N), Charlie_15 (N), Chewbacca_15 (N), Duplicity_15 (N), Fulbright_15 (N), Gex_15 (N), Hanako_15 (N), Jamie19_15 (N), Journey_15 (N), Kevin1_15 (N), Magsby_15 (N), Melville_15 (N), MichelleMyBell_15 (N), Nenae_15 (N), Panchino_15 (N), Parmesanjohn_15 (N), PhancyPhin_15 (N), Philonius_15 (N), Phloss_15 (N), Phrann_15 (N), Pipsqueaks_15 (N), Raymond7_15 (N), Rebel_15 (N), Redi_15 (N), Rubeelu_15 (N), Schnauzer_15 (N), ShrimpFriedEgg_15 (N), Shweta_15 (N), Silvafighter_15 (N), Silvy_15 (N), SkinnyPete_15 (N), Smurph_15 (N), Snekmaggon_15 (N), SpongeBob_15 (N), Tapioca_15 (N), Xeno_15 (N), Xerxes_15 (N),

Start 29:

- Found in 2 of 372 (0.5%) of genes in pham
- Manual Annotations of this start: 1 of 371
- Called 50.0% of time when present
- Phage (with cluster) where this start called: LilMoolah_12 (F1),

Start 42:

- Found in 303 of 372 (81.5%) of genes in pham
- Manual Annotations of this start: 1 of 371
- Called 0.3% of time when present
- Phage (with cluster) where this start called: PHappiness_13 (F1),

Summary by clusters:

There are 10 clusters represented in this pham: F1, singleton, F3, E, F5, I1, I2, O, N, F4,

Info for manual annotations of cluster E:

- Start number 7 was manually annotated 17 times for cluster E.
- Start number 12 was manually annotated 76 times for cluster E.

Info for manual annotations of cluster F1:

- Start number 4 was manually annotated 6 times for cluster F1.
- Start number 12 was manually annotated 134 times for cluster F1.
- Start number 13 was manually annotated 66 times for cluster F1.
- Start number 29 was manually annotated 1 time for cluster F1.
- Start number 42 was manually annotated 1 time for cluster F1.

Info for manual annotations of cluster F3:

- Start number 12 was manually annotated 1 time for cluster F3.

Info for manual annotations of cluster F4:

- Start number 12 was manually annotated 4 times for cluster F4.

Info for manual annotations of cluster F5:

- Start number 12 was manually annotated 1 time for cluster F5.

Info for manual annotations of cluster I1:

- Start number 12 was manually annotated 3 times for cluster I1.

Info for manual annotations of cluster I2:

- Start number 12 was manually annotated 1 time for cluster I2.

Info for manual annotations of cluster N:

- Start number 15 was manually annotated 41 times for cluster N.

Info for manual annotations of cluster O:

- Start number 9 was manually annotated 15 times for cluster O.
- Start number 10 was manually annotated 3 times for cluster O.

Gene Information:

Gene: ABCat_20 Start: 12397, Stop: 13340, Start Num: 7

Candidate Starts for ABCat_20:

(Start: 7 @12397 has 17 MA's), (Start: 12 @12469 has 220 MA's), (30, 12613), (Start: 42 @12706 has 1 MA's), (48, 12730), (50, 12742), (53, 12766), (60, 12784), (63, 12808), (86, 12967), (96, 13120), (99, 13141), (100, 13186), (101, 13207), (102, 13222), (104, 13333),

Gene: Adnama_23 Start: 12463, Stop: 13337, Start Num: 12

Candidate Starts for Adnama_23:

(Start: 7 @12391 has 17 MA's), (Start: 12 @12463 has 220 MA's), (30, 12607), (Start: 42 @12700 has 1 MA's), (48, 12724), (50, 12736), (53, 12760), (60, 12778), (63, 12802), (86, 12961), (96, 13114), (99, 13135), (100, 13180), (101, 13201), (102, 13216), (104, 13327),

Gene: Aggie_15 Start: 9037, Stop: 9943, Start Num: 15

Candidate Starts for Aggie_15:

(Start: 15 @9037 has 41 MA's), (25, 9145), (35, 9208), (38, 9256), (49, 9313), (61, 9376), (62, 9382), (64, 9394), (65, 9397), (81, 9487), (89, 9589), (94, 9703), (98, 9760),

Gene: Akhila_14 Start: 9227, Stop: 10163, Start Num: 13

Candidate Starts for Akhila_14:

(8, 9200), (Start: 13 @9227 has 66 MA's), (21, 9335), (28, 9365), (Start: 42 @9485 has 1 MA's), (51, 9518), (57, 9554), (61, 9572), (64, 9590), (67, 9599), (70, 9614), (71, 9617), (73, 9662), (83, 9740), (84, 9746), (91, 9812), (97, 9959), (104, 10160),

Gene: Alexphander_14 Start: 8386, Stop: 9322, Start Num: 12

Candidate Starts for Alexphander_14:

(Start: 12 @8386 has 220 MA's), (Start: 13 @8392 has 66 MA's), (21, 8494), (28, 8524), (38, 8620), (Start: 42 @8644 has 1 MA's), (44, 8647), (45, 8650), (57, 8713), (61, 8731), (64, 8749), (67, 8758), (73, 8821), (83, 8899), (91, 8971), (104, 9319),

Gene: AmericanBeauty_23 Start: 12460, Stop: 13331, Start Num: 12

Candidate Starts for AmericanBeauty_23:

(Start: 7 @12388 has 17 MA's), (Start: 12 @12460 has 220 MA's), (30, 12604), (Start: 42 @12697 has 1 MA's), (48, 12721), (50, 12733), (53, 12757), (60, 12775), (63, 12799), (86, 12958), (96, 13111), (99, 13132), (100, 13177), (101, 13198), (102, 13213), (104, 13324),

Gene: Andies_15 Start: 9036, Stop: 9942, Start Num: 15

Candidate Starts for Andies_15:

(Start: 15 @9036 has 41 MA's), (25, 9144), (35, 9207), (38, 9255), (49, 9312), (61, 9375), (62, 9381), (64, 9393), (65, 9396), (81, 9486), (89, 9588), (94, 9702), (98, 9759),

Gene: ArcusAngelus_13 Start: 8567, Stop: 9503, Start Num: 13

Candidate Starts for ArcusAngelus_13:

(8, 8540), (Start: 13 @8567 has 66 MA's), (21, 8675), (28, 8705), (37, 8780), (Start: 42 @8825 has 1 MA's), (44, 8828), (45, 8831), (51, 8858), (57, 8894), (64, 8930), (65, 8933), (67, 8939), (70, 8954), (71, 8957), (73, 9002), (83, 9080), (84, 9086), (91, 9152), (104, 9500),

Gene: Ardmore_12 Start: 8577, Stop: 9513, Start Num: 13

Candidate Starts for Ardmore_12:

(8, 8550), (Start: 13 @8577 has 66 MA's), (21, 8685), (28, 8715), (Start: 42 @8835 has 1 MA's), (51, 8868), (57, 8904), (61, 8922), (64, 8940), (67, 8949), (70, 8964), (71, 8967), (73, 9012), (83, 9090), (84, 9096), (91, 9162), (97, 9309), (104, 9510),

Gene: Argent26_23 Start: 12463, Stop: 13334, Start Num: 12

Candidate Starts for Argent26_23:

(Start: 7 @12391 has 17 MA's), (Start: 12 @12463 has 220 MA's), (30, 12607), (Start: 42 @12700 has 1 MA's), (48, 12724), (50, 12736), (53, 12760), (60, 12778), (63, 12802), (86, 12961), (96, 13114), (99, 13135), (100, 13180), (101, 13201), (102, 13216), (104, 13327),

Gene: Asriel_20 Start: 11341, Stop: 12212, Start Num: 12

Candidate Starts for Asriel_20:

(Start: 7 @11269 has 17 MA's), (Start: 12 @11341 has 220 MA's), (30, 11485), (Start: 42 @11578 has 1 MA's), (48, 11602), (50, 11614), (53, 11638), (60, 11656), (63, 11680), (86, 11839), (96, 11992), (99, 12013), (100, 12058), (101, 12079), (102, 12094), (104, 12205),

Gene: Aubs_13 Start: 8576, Stop: 9512, Start Num: 13

Candidate Starts for Aubs_13:

(8, 8549), (Start: 13 @8576 has 66 MA's), (21, 8684), (28, 8714), (37, 8789), (Start: 42 @8834 has 1 MA's), (44, 8837), (45, 8840), (51, 8867), (57, 8903), (64, 8939), (65, 8942), (67, 8948), (73, 9011), (83, 9089), (91, 9161), (104, 9509),

Gene: Awesomesauce_14 Start: 8400, Stop: 9336, Start Num: 12

Candidate Starts for Awesomesauce_14:

(Start: 12 @8400 has 220 MA's), (Start: 13 @8406 has 66 MA's), (21, 8508), (28, 8538), (38, 8634), (Start: 42 @8658 has 1 MA's), (57, 8727), (61, 8745), (64, 8763), (65, 8766), (67, 8772), (70, 8787), (71, 8790), (73, 8835), (83, 8913), (91, 8985), (97, 9132), (104, 9333),

Gene: BabeRuth_15 Start: 9081, Stop: 9987, Start Num: 15

Candidate Starts for BabeRuth_15:

(Start: 15 @9081 has 41 MA's), (24, 9180), (25, 9189), (35, 9252), (38, 9300), (49, 9357), (61, 9420), (62, 9426), (64, 9438), (65, 9441), (80, 9528), (81, 9531), (89, 9633), (94, 9747), (98, 9804),

Gene: Babsiella_15 Start: 9775, Stop: 10768, Start Num: 12

Candidate Starts for Babsiella_15:

(6, 9688), (Start: 12 @9775 has 220 MA's), (17, 9859), (30, 9922), (32, 9934), (33, 9940), (41, 10027), (52, 10078), (55, 10096), (69, 10162), (72, 10186), (76, 10216), (77, 10219), (84, 10282), (85, 10285), (90, 10348), (91, 10351), (105, 10765),

Gene: BadStone_20 Start: 12469, Stop: 13340, Start Num: 12

Candidate Starts for BadStone_20:

(Start: 7 @12397 has 17 MA's), (Start: 12 @12469 has 220 MA's), (30, 12613), (Start: 42 @12706 has 1 MA's), (48, 12730), (50, 12742), (53, 12766), (60, 12784), (63, 12808), (86, 12967), (96, 13120), (99, 13141), (100, 13186), (101, 13207), (102, 13222), (104, 13333),

Gene: Balomoji_20 Start: 12203, Stop: 13074, Start Num: 12

Candidate Starts for Balomoji_20:

(Start: 7 @12131 has 17 MA's), (Start: 12 @12203 has 220 MA's), (30, 12347), (Start: 42 @12440 has 1 MA's), (48, 12464), (50, 12476), (53, 12500), (60, 12518), (63, 12542), (86, 12701), (96, 12854), (99, 12875), (100, 12920), (101, 12941), (102, 12956), (104, 13067),

Gene: Barbarian_20 Start: 11341, Stop: 12212, Start Num: 12

Candidate Starts for Barbarian_20:

(Start: 7 @11269 has 17 MA's), (Start: 12 @11341 has 220 MA's), (30, 11485), (Start: 42 @11578 has 1 MA's), (48, 11602), (50, 11614), (53, 11638), (60, 11656), (63, 11680), (86, 11839), (96, 11992), (99, 12013), (100, 12058), (101, 12079), (102, 12094), (104, 12205),

Gene: Batiatus_13 Start: 8576, Stop: 9512, Start Num: 13

Candidate Starts for Batiatus_13:

(8, 8549), (Start: 13 @8576 has 66 MA's), (21, 8684), (28, 8714), (Start: 42 @8834 has 1 MA's), (44, 8837), (45, 8840), (51, 8867), (57, 8903), (61, 8921), (64, 8939), (65, 8942), (67, 8948), (70, 8963), (71, 8966), (73, 9011), (83, 9089), (84, 9095), (91, 9161), (97, 9308), (104, 9509),

Gene: Beakin_14 Start: 8392, Stop: 9328, Start Num: 12

Candidate Starts for Beakin_14:

(Start: 12 @8392 has 220 MA's), (Start: 13 @8398 has 66 MA's), (21, 8500), (28, 8530), (38, 8626), (Start: 42 @8650 has 1 MA's), (44, 8653), (45, 8656), (57, 8719), (61, 8737), (64, 8755), (67, 8764), (70, 8779), (71, 8782), (73, 8827), (83, 8905), (91, 8977), (104, 9325),

Gene: Bench_23 Start: 12336, Stop: 13207, Start Num: 12

Candidate Starts for Bench_23:

(Start: 7 @12264 has 17 MA's), (Start: 12 @12336 has 220 MA's), (30, 12480), (Start: 42 @12573 has 1 MA's), (48, 12597), (50, 12609), (53, 12633), (60, 12651), (63, 12675), (86, 12834), (96, 12987), (99, 13008), (100, 13053), (101, 13074), (102, 13089), (104, 13200),

Gene: BigBubba_21 Start: 11720, Stop: 12594, Start Num: 12

Candidate Starts for BigBubba_21:

(Start: 7 @11648 has 17 MA's), (Start: 12 @11720 has 220 MA's), (30, 11864), (Start: 42 @11957 has 1 MA's), (48, 11981), (50, 11993), (53, 12017), (60, 12035), (63, 12059), (86, 12218), (96, 12371), (99, 12392), (100, 12437), (101, 12458), (102, 12473), (104, 12584),

Gene: BigPhil_14 Start: 8383, Stop: 9319, Start Num: 12

Candidate Starts for BigPhil_14:

(Start: 12 @8383 has 220 MA's), (Start: 13 @8389 has 66 MA's), (21, 8491), (28, 8521), (38, 8617), (Start: 42 @8641 has 1 MA's), (57, 8710), (61, 8728), (64, 8746), (65, 8749), (67, 8755), (70, 8770), (71, 8773), (73, 8818), (83, 8896), (91, 8968), (104, 9316),

Gene: Bipolar_13 Start: 8545, Stop: 9481, Start Num: 13

Candidate Starts for Bipolar_13:

(8, 8518), (Start: 13 @8545 has 66 MA's), (21, 8653), (28, 8683), (Start: 42 @8803 has 1 MA's), (51, 8836), (57, 8872), (61, 8890), (64, 8908), (67, 8917), (70, 8932), (71, 8935), (73, 8980), (83, 9058), (84, 9064), (91, 9130), (97, 9277), (104, 9478),

Gene: Blessica_54 Start: 26060, Stop: 27011, Start Num: 9

Candidate Starts for Blessica_54:

(Start: 9 @26060 has 15 MA's), (Start: 10 @26072 has 3 MA's), (16, 26144), (22, 26189), (23, 26192), (28, 26216), (31, 26234), (35, 26264), (43, 26342), (44, 26345), (56, 26402), (61, 26426), (73, 26501), (84, 26585), (91, 26651), (93, 26747),

Gene: Blexus_13 Start: 8548, Stop: 9484, Start Num: 12

Candidate Starts for Blexus_13:

(Start: 12 @8548 has 220 MA's), (Start: 13 @8554 has 66 MA's), (21, 8656), (28, 8686), (38, 8782), (Start: 42 @8806 has 1 MA's), (57, 8875), (61, 8893), (64, 8911), (65, 8914), (67, 8920), (70, 8935), (71, 8938), (73, 8983), (83, 9061), (91, 9133), (104, 9481),

Gene: BlueCrab_13 Start: 8532, Stop: 9468, Start Num: 12

Candidate Starts for BlueCrab_13:

(Start: 12 @8532 has 220 MA's), (Start: 13 @8538 has 66 MA's), (21, 8640), (28, 8670), (38, 8766), (Start: 42 @8790 has 1 MA's), (57, 8859), (61, 8877), (64, 8895), (65, 8898), (67, 8904), (70, 8919), (71, 8922), (73, 8967), (83, 9045), (91, 9117), (104, 9465),

Gene: BobaPhett_13 Start: 8529, Stop: 9465, Start Num: 12

Candidate Starts for BobaPhett_13:

(Start: 4 @8436 has 6 MA's), (Start: 12 @8529 has 220 MA's), (Start: 13 @8535 has 66 MA's), (21, 8637), (28, 8667), (38, 8763), (Start: 42 @8787 has 1 MA's), (44, 8790), (45, 8793), (57, 8856), (61, 8874), (64, 8892), (67, 8901), (73, 8964), (83, 9042), (91, 9114), (104, 9462),

Gene: Bobi_14 Start: 8406, Stop: 9342, Start Num: 13

Candidate Starts for Bobi_14:

(8, 8379), (Start: 13 @8406 has 66 MA's), (21, 8514), (28, 8544), (Start: 42 @8664 has 1 MA's), (44, 8667), (45, 8670), (51, 8697), (57, 8733), (61, 8751), (64, 8769), (67, 8778), (70, 8793), (71, 8796), (73, 8841), (83, 8919), (84, 8925), (91, 8991), (97, 9138), (104, 9339),

Gene: BodEinwohner17_13 Start: 8532, Stop: 9468, Start Num: 12

Candidate Starts for BodEinwohner17_13:

(Start: 12 @8532 has 220 MA's), (Start: 13 @8538 has 66 MA's), (21, 8640), (28, 8670), (38, 8766), (Start: 42 @8790 has 1 MA's), (57, 8859), (61, 8877), (64, 8895), (65, 8898), (67, 8904), (70, 8919), (71, 8922), (73, 8967), (83, 9045), (91, 9117), (104, 9465),

Gene: Brocalys_13 Start: 8521, Stop: 9457, Start Num: 12

Candidate Starts for Brocalys_13:

(Start: 12 @8521 has 220 MA's), (Start: 13 @8527 has 66 MA's), (21, 8629), (28, 8659), (38, 8755), (Start: 42 @8779 has 1 MA's), (57, 8848), (61, 8866), (64, 8884), (65, 8887), (67, 8893), (70, 8908), (71, 8911), (73, 8956), (83, 9034), (91, 9106), (104, 9454),

Gene: Bubbles123_13 Start: 8557, Stop: 9493, Start Num: 12

Candidate Starts for Bubbles123_13:

(Start: 4 @8464 has 6 MA's), (Start: 12 @8557 has 220 MA's), (Start: 13 @8563 has 66 MA's), (21, 8665), (28, 8695), (38, 8791), (Start: 42 @8815 has 1 MA's), (44, 8818), (45, 8821), (57, 8884), (61, 8902), (64, 8920), (67, 8929), (73, 8992), (83, 9070), (91, 9142), (104, 9490),

Gene: Buck_20 Start: 12426, Stop: 13297, Start Num: 12

Candidate Starts for Buck_20:

(Start: 7 @12354 has 17 MA's), (Start: 12 @12426 has 220 MA's), (30, 12570), (Start: 42 @12663 has 1 MA's), (48, 12687), (50, 12699), (53, 12723), (60, 12741), (63, 12765), (86, 12924), (96, 13077), (99, 13098), (100, 13143), (101, 13164), (102, 13179), (104, 13290),

Gene: Burwell21_13 Start: 8536, Stop: 9472, Start Num: 12

Candidate Starts for Burwell21_13:

(Start: 4 @8443 has 6 MA's), (Start: 12 @8536 has 220 MA's), (Start: 13 @8542 has 66 MA's), (21, 8644), (28, 8674), (38, 8770), (Start: 42 @8794 has 1 MA's), (44, 8797), (45, 8800), (57, 8863), (61, 8881), (64, 8899), (67, 8908), (73, 8971), (83, 9049), (91, 9121), (104, 9469),

Gene: Butters_15 Start: 9056, Stop: 9962, Start Num: 15

Candidate Starts for Butters_15:

(Start: 15 @9056 has 41 MA's), (25, 9164), (35, 9227), (38, 9275), (49, 9332), (61, 9395), (62, 9401), (65, 9416), (81, 9506), (84, 9554), (94, 9722), (98, 9779),

Gene: BuzzLyseyear_14 Start: 8386, Stop: 9322, Start Num: 12

Candidate Starts for BuzzLyseyear_14:

(Start: 12 @8386 has 220 MA's), (Start: 13 @8392 has 66 MA's), (21, 8494), (26, 8518), (28, 8524), (38, 8620), (Start: 42 @8644 has 1 MA's), (61, 8731), (65, 8752), (67, 8758), (73, 8821), (83, 8899), (91, 8971), (104, 9319),

Gene: ByChance_13 Start: 8446, Stop: 9475, Start Num: 4

Candidate Starts for ByChance_13:

(Start: 4 @8446 has 6 MA's), (Start: 12 @8539 has 220 MA's), (Start: 13 @8545 has 66 MA's), (21, 8647), (28, 8677), (38, 8773), (Start: 42 @8797 has 1 MA's), (44, 8800), (45, 8803), (57, 8866), (61, 8884), (64, 8902), (67, 8911), (73, 8974), (83, 9052), (91, 9124), (104, 9472),

Gene: Byougenkin_13 Start: 8548, Stop: 9484, Start Num: 13

Candidate Starts for Byougenkin_13:

(8, 8521), (Start: 13 @8548 has 66 MA's), (21, 8656), (28, 8686), (Start: 42 @8806 has 1 MA's), (51, 8839), (57, 8875), (61, 8893), (64, 8911), (65, 8914), (67, 8920), (70, 8935), (71, 8938), (73, 8983), (83, 9061), (84, 9067), (91, 9133), (97, 9280), (104, 9481),

Gene: Cabrinians_13 Start: 8529, Stop: 9465, Start Num: 12

Candidate Starts for Cabrinians_13:

(Start: 4 @8436 has 6 MA's), (Start: 12 @8529 has 220 MA's), (Start: 13 @8535 has 66 MA's), (21, 8637), (28, 8667), (38, 8763), (Start: 42 @8787 has 1 MA's), (44, 8790), (45, 8793), (57, 8856), (61, 8874), (64, 8892), (67, 8901), (73, 8964), (83, 9042), (91, 9114), (104, 9462),

Gene: Cactus_22 Start: 11682, Stop: 12553, Start Num: 12

Candidate Starts for Cactus_22:

(Start: 7 @11610 has 17 MA's), (Start: 12 @11682 has 220 MA's), (30, 11826), (Start: 42 @11919 has 1 MA's), (48, 11943), (50, 11955), (53, 11979), (60, 11997), (63, 12021), (86, 12180), (96, 12333), (99, 12354), (100, 12399), (101, 12420), (102, 12435), (104, 12546),

Gene: CaptainTrips_14 Start: 9225, Stop: 10161, Start Num: 13

Candidate Starts for CaptainTrips_14:

(8, 9198), (Start: 13 @9225 has 66 MA's), (21, 9333), (28, 9363), (Start: 42 @9483 has 1 MA's), (51, 9516), (57, 9552), (61, 9570), (64, 9588), (65, 9591), (67, 9597), (70, 9612), (71, 9615), (73, 9660), (83, 9738), (84, 9744), (91, 9810), (97, 9957), (104, 10158),

Gene: Carcharodon_15 Start: 9036, Stop: 9942, Start Num: 15

Candidate Starts for Carcharodon_15:

(Start: 15 @9036 has 41 MA's), (25, 9144), (35, 9207), (49, 9312), (61, 9375), (62, 9381), (64, 9393), (65, 9396), (81, 9486), (89, 9588), (94, 9702), (98, 9759),

Gene: Catdawg_53 Start: 25749, Stop: 26700, Start Num: 9

Candidate Starts for Catdawg_53:

(Start: 9 @25749 has 15 MA's), (Start: 10 @25761 has 3 MA's), (16, 25833), (22, 25878), (23, 25881), (28, 25905), (31, 25923), (35, 25953), (43, 26031), (44, 26034), (56, 26091), (61, 26115), (73, 26190), (84, 26274), (91, 26340), (93, 26436),

Gene: Cerasum_14 Start: 8383, Stop: 9319, Start Num: 12

Candidate Starts for Cerasum_14:

(Start: 12 @8383 has 220 MA's), (Start: 13 @8389 has 66 MA's), (21, 8491), (28, 8521), (38, 8617), (Start: 42 @8641 has 1 MA's), (57, 8710), (61, 8728), (64, 8746), (65, 8749), (67, 8755), (70, 8770), (71, 8773), (73, 8818), (83, 8896), (91, 8968), (104, 9316),

Gene: Charlie_15 Start: 9036, Stop: 9942, Start Num: 15

Candidate Starts for Charlie_15:

(Start: 15 @9036 has 41 MA's), (25, 9144), (35, 9207), (38, 9255), (49, 9312), (61, 9375), (62, 9381), (64, 9393), (65, 9396), (81, 9486), (89, 9588), (94, 9702), (98, 9759),

Gene: Che8_13 Start: 8536, Stop: 9472, Start Num: 12

Candidate Starts for Che8_13:

(Start: 12 @8536 has 220 MA's), (21, 8644), (28, 8674), (38, 8770), (Start: 42 @8794 has 1 MA's), (57, 8863), (61, 8881), (64, 8899), (65, 8902), (67, 8908), (70, 8923), (71, 8926), (73, 8971), (83, 9049), (91, 9121), (104, 9469),

Gene: Chevrolet_13 Start: 8567, Stop: 9503, Start Num: 13

Candidate Starts for Chevrolet_13:

(8, 8540), (Start: 13 @8567 has 66 MA's), (21, 8675), (28, 8705), (37, 8780), (Start: 42 @8825 has 1 MA's), (44, 8828), (45, 8831), (51, 8858), (57, 8894), (64, 8930), (65, 8933), (67, 8939), (70, 8954), (71, 8957), (73, 9002), (83, 9080), (84, 9086), (91, 9152), (104, 9500),

Gene: Chewbacca_15 Start: 9036, Stop: 9942, Start Num: 15

Candidate Starts for Chewbacca_15:

(Start: 15 @9036 has 41 MA's), (25, 9144), (35, 9207), (38, 9255), (49, 9312), (61, 9375), (62, 9381), (64, 9393), (65, 9396), (81, 9486), (89, 9588), (94, 9702), (98, 9759),

Gene: ChosenOne_20 Start: 11683, Stop: 12554, Start Num: 12

Candidate Starts for ChosenOne_20:

(Start: 7 @11611 has 17 MA's), (Start: 12 @11683 has 220 MA's), (30, 11827), (Start: 42 @11920 has 1 MA's), (48, 11944), (50, 11956), (53, 11980), (60, 11998), (63, 12022), (86, 12181), (96, 12334), (99, 12355), (100, 12400), (101, 12421), (102, 12436), (104, 12547),

Gene: ChotaBhai_21 Start: 11719, Stop: 12590, Start Num: 12

Candidate Starts for ChotaBhai_21:

(Start: 7 @11647 has 17 MA's), (Start: 12 @11719 has 220 MA's), (30, 11863), (Start: 42 @11956 has 1 MA's), (48, 11980), (50, 11992), (53, 12016), (60, 12034), (63, 12058), (86, 12217), (96, 12370), (99, 12391), (100, 12436), (101, 12457), (102, 12472), (104, 12583),

Gene: Chuckly_13 Start: 8578, Stop: 9514, Start Num: 13

Candidate Starts for Chuckly_13:

(8, 8551), (Start: 13 @8578 has 66 MA's), (21, 8686), (28, 8716), (Start: 42 @8836 has 1 MA's), (51, 8869), (57, 8905), (61, 8923), (64, 8941), (65, 8944), (67, 8950), (70, 8965), (71, 8968), (73, 9013), (83, 9091), (84, 9097), (91, 9163), (97, 9310), (104, 9511),

Gene: Clifton_13 Start: 8520, Stop: 9456, Start Num: 12

Candidate Starts for Clifton_13:

(Start: 12 @8520 has 220 MA's), (Start: 13 @8526 has 66 MA's), (21, 8628), (28, 8658), (38, 8754), (Start: 42 @8778 has 1 MA's), (57, 8847), (61, 8865), (64, 8883), (65, 8886), (67, 8892), (70, 8907), (71, 8910), (73, 8955), (83, 9033), (91, 9105), (104, 9453),

Gene: Coco12_14 Start: 8385, Stop: 9321, Start Num: 12

Candidate Starts for Coco12_14:

(Start: 12 @8385 has 220 MA's), (Start: 13 @8391 has 66 MA's), (21, 8493), (28, 8523), (38, 8619), (Start: 42 @8643 has 1 MA's), (57, 8712), (61, 8730), (64, 8748), (65, 8751), (67, 8757), (73, 8820), (83, 8898), (91, 8970), (95, 9096), (97, 9117), (104, 9318),

Gene: Command613_22 Start: 12738, Stop: 13609, Start Num: 12

Candidate Starts for Command613_22:

(Start: 7 @12666 has 17 MA's), (Start: 12 @12738 has 220 MA's), (30, 12882), (Start: 42 @12975 has 1 MA's), (48, 12999), (50, 13011), (53, 13035), (60, 13053), (63, 13077), (86, 13236), (96, 13389), (99, 13410), (100, 13455), (101, 13476), (102, 13491), (104, 13602),

Gene: Cookies_21 Start: 12342, Stop: 13213, Start Num: 12

Candidate Starts for Cookies_21:

(Start: 7 @12270 has 17 MA's), (Start: 12 @12342 has 220 MA's), (30, 12486), (Start: 42 @12579 has 1 MA's), (48, 12603), (50, 12615), (53, 12639), (60, 12657), (63, 12681), (86, 12840), (96, 12993), (99, 13014), (100, 13059), (101, 13080), (102, 13095), (104, 13206),

Gene: Cornie_14 Start: 8819, Stop: 9710, Start Num: 12

Candidate Starts for Cornie_14:

(Start: 12 @8819 has 220 MA's), (14, 8828), (18, 8909), (28, 8963), (39, 9062), (40, 9065), (46, 9101), (47, 9104), (74, 9257), (75, 9260), (80, 9284), (82, 9296), (84, 9335), (97, 9500),

Gene: Cornucopia_14 Start: 8418, Stop: 9354, Start Num: 12

Candidate Starts for Cornucopia_14:

(Start: 12 @8418 has 220 MA's), (21, 8526), (28, 8556), (38, 8652), (Start: 42 @8676 has 1 MA's), (44, 8679), (45, 8682), (51, 8709), (57, 8745), (61, 8763), (64, 8781), (65, 8784), (67, 8790), (70, 8805), (71, 8808), (73, 8853), (83, 8931), (84, 8937), (91, 9003), (97, 9150), (104, 9351),

Gene: Crumble_13 Start: 8537, Stop: 9473, Start Num: 12

Candidate Starts for Crumble_13:

(2, 8372), (3, 8441), (Start: 12 @8537 has 220 MA's), (Start: 13 @8543 has 66 MA's), (21, 8645), (28, 8675), (38, 8771), (Start: 42 @8795 has 1 MA's), (61, 8882), (64, 8900), (67, 8909), (73, 8972), (83, 9050), (91, 9122), (104, 9470),

Gene: CrystalP_21 Start: 12398, Stop: 13341, Start Num: 7

Candidate Starts for CrystalP_21:

(Start: 7 @12398 has 17 MA's), (Start: 12 @12470 has 220 MA's), (30, 12614), (Start: 42 @12707 has 1 MA's), (48, 12731), (50, 12743), (53, 12767), (60, 12785), (63, 12809), (86, 12968), (96, 13121), (99, 13142), (100, 13187), (101, 13208), (102, 13223), (104, 13334),

Gene: Czyszczone1_22 Start: 12146, Stop: 13089, Start Num: 7

Candidate Starts for Czyszczone1_22:

(Start: 7 @12146 has 17 MA's), (Start: 12 @12218 has 220 MA's), (30, 12362), (Start: 42 @12455 has 1 MA's), (48, 12479), (50, 12491), (53, 12515), (60, 12533), (63, 12557), (86, 12716), (96, 12869), (99, 12890), (100, 12935), (101, 12956), (102, 12971), (104, 13082),

Gene: DLane_12 Start: 8576, Stop: 9512, Start Num: 13

Candidate Starts for DLane_12:

(8, 8549), (Start: 13 @8576 has 66 MA's), (21, 8684), (28, 8714), (Start: 42 @8834 has 1 MA's), (44, 8837), (45, 8840), (51, 8867), (57, 8903), (61, 8921), (64, 8939), (65, 8942), (67, 8948), (70, 8963), (71, 8966), (73, 9011), (83, 9089), (84, 9095), (91, 9161), (97, 9308), (104, 9509),

Gene: DRBy19_13 Start: 8561, Stop: 9497, Start Num: 12

Candidate Starts for DRBy19_13:

(Start: 12 @8561 has 220 MA's), (Start: 13 @8567 has 66 MA's), (21, 8669), (28, 8699), (Start: 42 @8819 has 1 MA's), (57, 8888), (61, 8906), (64, 8924), (67, 8933), (70, 8948), (71, 8951), (73, 8996), (83, 9074), (91, 9146), (104, 9494),

Gene: DaWorst_14 Start: 8391, Stop: 9327, Start Num: 12

Candidate Starts for DaWorst_14:

(Start: 4 @8298 has 6 MA's), (Start: 12 @8391 has 220 MA's), (Start: 13 @8397 has 66 MA's), (21, 8499), (26, 8523), (28, 8529), (38, 8625), (Start: 42 @8649 has 1 MA's), (44, 8652), (45, 8655), (57, 8718), (61, 8736), (64, 8754), (67, 8763), (73, 8826), (83, 8904), (91, 8976), (104, 9324),

Gene: Daenerys_13 Start: 8532, Stop: 9468, Start Num: 12

Candidate Starts for Daenerys_13:

(Start: 12 @8532 has 220 MA's), (Start: 13 @8538 has 66 MA's), (21, 8640), (28, 8670), (38, 8766), (Start: 42 @8790 has 1 MA's), (57, 8859), (61, 8877), (64, 8895), (65, 8898), (67, 8904), (70, 8919), (71, 8922), (73, 8967), (83, 9045), (91, 9117), (104, 9465),

Gene: Dante_13 Start: 8563, Stop: 9499, Start Num: 12

Candidate Starts for Dante_13:

(Start: 12 @8563 has 220 MA's), (21, 8671), (28, 8701), (38, 8797), (Start: 42 @8821 has 1 MA's), (57, 8890), (61, 8908), (64, 8926), (65, 8929), (67, 8935), (70, 8950), (71, 8953), (73, 8998), (83, 9076), (91, 9148), (104, 9496),

Gene: DeadP_13 Start: 8577, Stop: 9513, Start Num: 13

Candidate Starts for DeadP_13:

(8, 8550), (Start: 13 @8577 has 66 MA's), (21, 8685), (28, 8715), (Start: 42 @8835 has 1 MA's), (51, 8868), (57, 8904), (61, 8922), (64, 8940), (65, 8943), (67, 8949), (70, 8964), (71, 8967), (73, 9012), (83, 9090), (84, 9096), (91, 9162), (97, 9309), (104, 9510),

Gene: Deb65_13 Start: 8532, Stop: 9468, Start Num: 12

Candidate Starts for Deb65_13:

(Start: 12 @8532 has 220 MA's), (Start: 13 @8538 has 66 MA's), (21, 8640), (28, 8670), (38, 8766), (Start: 42 @8790 has 1 MA's), (57, 8859), (61, 8877), (64, 8895), (65, 8898), (67, 8904), (70, 8919), (71, 8922), (73, 8967), (83, 9045), (91, 9117), (104, 9465),

Gene: DillTech15_13 Start: 8576, Stop: 9512, Start Num: 13

Candidate Starts for DillTech15_13:

(8, 8549), (Start: 13 @8576 has 66 MA's), (21, 8684), (28, 8714), (Start: 42 @8834 has 1 MA's), (51, 8867), (57, 8903), (61, 8921), (64, 8939), (67, 8948), (70, 8963), (71, 8966), (73, 9011), (83, 9089), (84, 9095), (91, 9161), (97, 9308), (104, 9509),

Gene: DirtMcgirt_14 Start: 8392, Stop: 9328, Start Num: 12

Candidate Starts for DirtMcgirt_14:

(Start: 4 @8299 has 6 MA's), (Start: 12 @8392 has 220 MA's), (Start: 13 @8398 has 66 MA's), (21, 8500), (28, 8530), (38, 8626), (Start: 42 @8650 has 1 MA's), (57, 8719), (61, 8737), (64, 8755), (65, 8758), (67, 8764), (70, 8779), (71, 8782), (73, 8827), (83, 8905), (84, 8911), (91, 8977), (104, 9325),

Gene: DocMcStuffins_14 Start: 8399, Stop: 9335, Start Num: 12

Candidate Starts for DocMcStuffins_14:

(Start: 12 @8399 has 220 MA's), (Start: 13 @8405 has 66 MA's), (21, 8507), (26, 8531), (28, 8537), (Start: 42 @8657 has 1 MA's), (51, 8690), (57, 8726), (61, 8744), (64, 8762), (65, 8765), (67, 8771), (70, 8786), (71, 8789), (73, 8834), (83, 8912), (91, 8984), (97, 9131), (104, 9332),

Gene: DoctorDiddles_21 Start: 11635, Stop: 12506, Start Num: 12

Candidate Starts for DoctorDiddles_21:

(Start: 7 @11563 has 17 MA's), (Start: 12 @11635 has 220 MA's), (30, 11779), (Start: 42 @11872 has 1 MA's), (48, 11896), (50, 11908), (53, 11932), (60, 11950), (63, 11974), (86, 12133), (96, 12286), (99, 12307), (100, 12352), (101, 12373), (102, 12388), (104, 12499),

Gene: Donkeykong_12 Start: 8555, Stop: 9491, Start Num: 12

Candidate Starts for Donkeykong_12:

(Start: 4 @8462 has 6 MA's), (Start: 12 @8555 has 220 MA's), (Start: 13 @8561 has 66 MA's), (21, 8663), (28, 8693), (38, 8789), (Start: 42 @8813 has 1 MA's), (44, 8816), (45, 8819), (57, 8882), (61, 8900), (64, 8918), (67, 8927), (73, 8990), (83, 9068), (91, 9140), (104, 9488),

Gene: Doomphist_13 Start: 8532, Stop: 9468, Start Num: 12

Candidate Starts for Doomphist_13:

(Start: 12 @8532 has 220 MA's), (Start: 13 @8538 has 66 MA's), (21, 8640), (26, 8664), (28, 8670), (38, 8766), (Start: 42 @8790 has 1 MA's), (51, 8823), (61, 8877), (64, 8895), (67, 8904), (73, 8967), (83, 9045), (91, 9117), (104, 9465),

Gene: Dorothy_13 Start: 8532, Stop: 9468, Start Num: 12

Candidate Starts for Dorothy_13:

(Start: 12 @8532 has 220 MA's), (Start: 13 @8538 has 66 MA's), (21, 8640), (28, 8670), (38, 8766), (Start: 42 @8790 has 1 MA's), (57, 8859), (61, 8877), (64, 8895), (65, 8898), (67, 8904), (70, 8919), (71, 8922), (73, 8967), (83, 9045), (91, 9117), (104, 9465),

Gene: DosHalletts_14 Start: 8385, Stop: 9321, Start Num: 12

Candidate Starts for DosHalletts_14:

(Start: 12 @8385 has 220 MA's), (Start: 13 @8391 has 66 MA's), (21, 8493), (28, 8523), (38, 8619), (Start: 42 @8643 has 1 MA's), (57, 8712), (61, 8730), (64, 8748), (65, 8751), (67, 8757), (70, 8772), (71, 8775), (73, 8820), (83, 8898), (91, 8970), (97, 9117), (104, 9318),

Gene: DotProduct_13 Start: 8578, Stop: 9514, Start Num: 13

Candidate Starts for DotProduct_13:

(8, 8551), (Start: 13 @8578 has 66 MA's), (21, 8686), (28, 8716), (Start: 42 @8836 has 1 MA's), (51, 8869), (57, 8905), (61, 8923), (64, 8941), (67, 8950), (70, 8965), (71, 8968), (73, 9013), (83, 9091), (84, 9097), (91, 9163), (97, 9310), (104, 9511),

Gene: Doug_13 Start: 8539, Stop: 9475, Start Num: 12

Candidate Starts for Doug_13:

(Start: 4 @8446 has 6 MA's), (Start: 12 @8539 has 220 MA's), (Start: 13 @8545 has 66 MA's), (21, 8647), (28, 8677), (38, 8773), (Start: 42 @8797 has 1 MA's), (44, 8800), (45, 8803), (51, 8830), (57, 8866), (61, 8884), (64, 8902), (67, 8911), (70, 8926), (71, 8929), (73, 8974), (83, 9052), (84, 9058), (91, 9124), (104, 9472),

Gene: Drago_14 Start: 8390, Stop: 9326, Start Num: 12

Candidate Starts for Drago_14:

(Start: 4 @8297 has 6 MA's), (Start: 12 @8390 has 220 MA's), (Start: 13 @8396 has 66 MA's), (21, 8498), (28, 8528), (Start: 42 @8648 has 1 MA's), (57, 8717), (61, 8735), (64, 8753), (67, 8762), (73, 8825), (83, 8903), (84, 8909), (91, 8975), (104, 9323),

Gene: Duplicity_15 Start: 9036, Stop: 9942, Start Num: 15

Candidate Starts for Duplicity_15:

(Start: 15 @9036 has 41 MA's), (25, 9144), (35, 9207), (49, 9312), (61, 9375), (62, 9381), (64, 9393), (65, 9396), (81, 9486), (89, 9588), (94, 9702), (98, 9759),

Gene: Dusk_20 Start: 12057, Stop: 13000, Start Num: 7

Candidate Starts for Dusk_20:

(Start: 7 @12057 has 17 MA's), (Start: 12 @12129 has 220 MA's), (30, 12273), (Start: 42 @12366 has 1 MA's), (48, 12390), (50, 12402), (53, 12426), (60, 12444), (63, 12468), (86, 12627), (96, 12780), (99, 12801), (100, 12846), (101, 12867), (102, 12882), (104, 12993),

Gene: Easy2Say_22 Start: 13206, Stop: 14080, Start Num: 12

Candidate Starts for Easy2Say_22:

(Start: 7 @13134 has 17 MA's), (Start: 12 @13206 has 220 MA's), (30, 13350), (Start: 42 @13443 has 1 MA's), (48, 13467), (50, 13479), (53, 13503), (60, 13521), (63, 13545), (86, 13704), (96, 13857), (99, 13878), (100, 13923), (101, 13944), (102, 13959), (104, 14070),

Gene: Eish_13 Start: 8528, Stop: 9464, Start Num: 12

Candidate Starts for Eish_13:

(Start: 4 @8435 has 6 MA's), (Start: 12 @8528 has 220 MA's), (Start: 13 @8534 has 66 MA's), (21, 8636), (28, 8666), (38, 8762), (Start: 42 @8786 has 1 MA's), (44, 8789), (45, 8792), (57, 8855), (61, 8873), (64, 8891), (65, 8894), (67, 8900), (73, 8963), (83, 9041), (91, 9113), (104, 9461),

Gene: EleanorGeorge_13 Start: 8579, Stop: 9515, Start Num: 13

Candidate Starts for EleanorGeorge_13:

(8, 8552), (Start: 13 @8579 has 66 MA's), (21, 8687), (28, 8717), (Start: 42 @8837 has 1 MA's), (51, 8870), (57, 8906), (61, 8924), (64, 8942), (67, 8951), (70, 8966), (71, 8969), (73, 9014), (83, 9092), (84, 9098), (91, 9164), (97, 9311), (104, 9512),

Gene: Elite2014_20 Start: 11683, Stop: 12554, Start Num: 12

Candidate Starts for Elite2014_20:

(Start: 7 @11611 has 17 MA's), (Start: 12 @11683 has 220 MA's), (30, 11827), (Start: 42 @11920 has 1 MA's), (48, 11944), (50, 11956), (53, 11980), (60, 11998), (63, 12022), (86, 12181), (96, 12334), (99, 12355), (100, 12400), (101, 12421), (102, 12436), (104, 12547),

Gene: Emma_13 Start: 8576, Stop: 9512, Start Num: 13

Candidate Starts for Emma_13:

(8, 8549), (Start: 13 @8576 has 66 MA's), (21, 8684), (28, 8714), (Start: 42 @8834 has 1 MA's), (44, 8837), (45, 8840), (51, 8867), (57, 8903), (61, 8921), (64, 8939), (65, 8942), (67, 8948), (70, 8963), (71, 8966), (73, 9011), (83, 9089), (84, 9095), (91, 9161), (97, 9308), (104, 9509),

Gene: Emmina_21 Start: 11788, Stop: 12662, Start Num: 12

Candidate Starts for Emmina_21:

(Start: 7 @11716 has 17 MA's), (Start: 12 @11788 has 220 MA's), (30, 11932), (Start: 42 @12025 has 1 MA's), (48, 12049), (50, 12061), (53, 12085), (60, 12103), (63, 12127), (86, 12286), (96, 12439), (99, 12460), (100, 12505), (101, 12526), (102, 12541), (104, 12652),

Gene: Enby_14 Start: 8390, Stop: 9326, Start Num: 12

Candidate Starts for Enby_14:

(Start: 4 @8297 has 6 MA's), (Start: 12 @8390 has 220 MA's), (Start: 13 @8396 has 66 MA's), (21, 8498), (28, 8528), (Start: 42 @8648 has 1 MA's), (57, 8717), (61, 8735), (64, 8753), (67, 8762), (73, 8825), (83, 8903), (84, 8909), (91, 8975), (104, 9323),

Gene: Eradicator_13 Start: 8533, Stop: 9469, Start Num: 12

Candidate Starts for Eradicator_13:

(Start: 12 @8533 has 220 MA's), (Start: 13 @8539 has 66 MA's), (21, 8641), (28, 8671), (38, 8767), (Start: 42 @8791 has 1 MA's), (57, 8860), (61, 8878), (64, 8896), (65, 8899), (67, 8905), (70, 8920), (71, 8923), (73, 8968), (83, 9046), (91, 9118), (104, 9466),

Gene: Estave1_13 Start: 8548, Stop: 9484, Start Num: 12

Candidate Starts for Estave1_13:

(Start: 12 @8548 has 220 MA's), (Start: 13 @8554 has 66 MA's), (21, 8656), (28, 8686), (38, 8782), (Start: 42 @8806 has 1 MA's), (57, 8875), (61, 8893), (64, 8911), (67, 8920), (70, 8935), (71, 8938), (73, 8983), (83, 9061), (91, 9133), (104, 9481),

Gene: Familton_54 Start: 25753, Stop: 26704, Start Num: 9

Candidate Starts for Familton_54:

(Start: 9 @25753 has 15 MA's), (Start: 10 @25765 has 3 MA's), (16, 25837), (22, 25882), (23, 25885), (28, 25909), (31, 25927), (35, 25957), (43, 26035), (44, 26038), (56, 26095), (61, 26119), (73, 26194), (84, 26278), (91, 26344), (93, 26440),

Gene: Fancypants_13 Start: 8539, Stop: 9475, Start Num: 12

Candidate Starts for Fancypants_13:

(Start: 4 @8446 has 6 MA's), (Start: 12 @8539 has 220 MA's), (Start: 13 @8545 has 66 MA's), (21, 8647), (28, 8677), (38, 8773), (Start: 42 @8797 has 1 MA's), (44, 8800), (45, 8803), (51, 8830), (57,

8866), (61, 8884), (64, 8902), (67, 8911), (73, 8974), (83, 9052), (91, 9124), (104, 9472),

Gene: Fastidio_13 Start: 8546, Stop: 9482, Start Num: 12

Candidate Starts for Fastidio_13:

(Start: 12 @8546 has 220 MA's), (Start: 13 @8552 has 66 MA's), (21, 8654), (28, 8684), (Start: 42 @8804 has 1 MA's), (51, 8837), (57, 8873), (61, 8891), (64, 8909), (67, 8918), (70, 8933), (71, 8936), (73, 8981), (83, 9059), (84, 9065), (91, 9131), (97, 9278), (104, 9479),

Gene: Filch_22 Start: 12228, Stop: 13099, Start Num: 12

Candidate Starts for Filch_22:

(Start: 7 @12156 has 17 MA's), (Start: 12 @12228 has 220 MA's), (30, 12372), (Start: 42 @12465 has 1 MA's), (48, 12489), (50, 12501), (53, 12525), (60, 12543), (63, 12567), (86, 12726), (96, 12879), (99, 12900), (100, 12945), (101, 12966), (102, 12981), (104, 13092),

Gene: Filuzino_13 Start: 8578, Stop: 9514, Start Num: 13

Candidate Starts for Filuzino_13:

(8, 8551), (Start: 13 @8578 has 66 MA's), (21, 8686), (28, 8716), (Start: 42 @8836 has 1 MA's), (51, 8869), (57, 8905), (61, 8923), (64, 8941), (67, 8950), (70, 8965), (71, 8968), (73, 9013), (83, 9091), (84, 9097), (91, 9163), (97, 9310), (104, 9511),

Gene: FireRed_20 Start: 11979, Stop: 12853, Start Num: 12

Candidate Starts for FireRed_20:

(Start: 7 @11907 has 17 MA's), (Start: 12 @11979 has 220 MA's), (30, 12123), (Start: 42 @12216 has 1 MA's), (48, 12240), (50, 12252), (53, 12276), (60, 12294), (63, 12318), (86, 12477), (96, 12630), (99, 12651), (100, 12696), (101, 12717), (102, 12732), (104, 12843),

Gene: Firehouse51_13 Start: 8577, Stop: 9513, Start Num: 13

Candidate Starts for Firehouse51_13:

(8, 8550), (Start: 13 @8577 has 66 MA's), (21, 8685), (28, 8715), (Start: 42 @8835 has 1 MA's), (51, 8868), (57, 8904), (61, 8922), (64, 8940), (65, 8943), (67, 8949), (70, 8964), (71, 8967), (73, 9012), (83, 9090), (84, 9096), (91, 9162), (97, 9309), (104, 9510),

Gene: Flathead_14 Start: 8409, Stop: 9345, Start Num: 13

Candidate Starts for Flathead_14:

(8, 8382), (Start: 13 @8409 has 66 MA's), (21, 8517), (26, 8541), (28, 8547), (Start: 42 @8667 has 1 MA's), (51, 8700), (57, 8736), (61, 8754), (64, 8772), (65, 8775), (67, 8781), (70, 8796), (71, 8799), (73, 8844), (83, 8922), (84, 8928), (91, 8994), (97, 9141), (104, 9342),

Gene: Florinda_13 Start: 8559, Stop: 9495, Start Num: 12

Candidate Starts for Florinda_13:

(Start: 4 @8466 has 6 MA's), (Start: 12 @8559 has 220 MA's), (Start: 13 @8565 has 66 MA's), (21, 8667), (26, 8691), (28, 8697), (38, 8793), (Start: 42 @8817 has 1 MA's), (44, 8820), (45, 8823), (51, 8850), (57, 8886), (61, 8904), (64, 8922), (67, 8931), (73, 8994), (83, 9072), (91, 9144), (97, 9291), (104, 9492),

Gene: Flypotenuse_19 Start: 12086, Stop: 12957, Start Num: 12

Candidate Starts for Flypotenuse_19:

(Start: 7 @12014 has 17 MA's), (Start: 12 @12086 has 220 MA's), (30, 12230), (Start: 42 @12323 has 1 MA's), (48, 12347), (50, 12359), (53, 12383), (60, 12401), (63, 12425), (86, 12584), (96, 12737), (99, 12758), (100, 12803), (101, 12824), (102, 12839), (104, 12950),

Gene: Frankie_14 Start: 8588, Stop: 9524, Start Num: 12

Candidate Starts for Frankie_14:

(Start: 12 @8588 has 220 MA's), (Start: 13 @8594 has 66 MA's), (21, 8696), (26, 8720), (28, 8726), (Start: 42 @8846 has 1 MA's), (51, 8879), (57, 8915), (61, 8933), (64, 8951), (65, 8954), (67, 8960), (70, 8975), (71, 8978), (73, 9023), (83, 9101), (84, 9107), (91, 9173), (104, 9521),

Gene: FreddyB_13 Start: 8538, Stop: 9474, Start Num: 12

Candidate Starts for FreddyB_13:

(Start: 4 @8445 has 6 MA's), (Start: 12 @8538 has 220 MA's), (Start: 13 @8544 has 66 MA's), (21, 8646), (28, 8676), (38, 8772), (Start: 42 @8796 has 1 MA's), (44, 8799), (45, 8802), (57, 8865), (61, 8883), (64, 8901), (67, 8910), (73, 8973), (83, 9051), (91, 9123), (104, 9471),

Gene: Fruitloop_13 Start: 8578, Stop: 9514, Start Num: 13

Candidate Starts for Fruitloop_13:

(8, 8551), (Start: 13 @8578 has 66 MA's), (21, 8686), (28, 8716), (Start: 42 @8836 has 1 MA's), (51, 8869), (57, 8905), (61, 8923), (64, 8941), (65, 8944), (67, 8950), (70, 8965), (71, 8968), (73, 9013), (83, 9091), (84, 9097), (91, 9163), (97, 9310), (104, 9511),

Gene: Fulbright_15 Start: 9036, Stop: 9942, Start Num: 15

Candidate Starts for Fulbright_15:

(Start: 15 @9036 has 41 MA's), (25, 9144), (35, 9207), (38, 9255), (49, 9312), (61, 9375), (62, 9381), (64, 9393), (65, 9396), (81, 9486), (89, 9588), (94, 9702), (98, 9759),

Gene: GUmbie_12 Start: 8572, Stop: 9508, Start Num: 13

Candidate Starts for GUmbie_12:

(8, 8545), (Start: 13 @8572 has 66 MA's), (21, 8680), (28, 8710), (Start: 42 @8830 has 1 MA's), (51, 8863), (57, 8899), (61, 8917), (64, 8935), (65, 8938), (67, 8944), (70, 8959), (71, 8962), (73, 9007), (83, 9085), (84, 9091), (91, 9157), (97, 9304), (104, 9505),

Gene: Gage_23 Start: 12463, Stop: 13334, Start Num: 12

Candidate Starts for Gage_23:

(Start: 7 @12391 has 17 MA's), (Start: 12 @12463 has 220 MA's), (30, 12607), (Start: 42 @12700 has 1 MA's), (48, 12724), (50, 12736), (53, 12760), (60, 12778), (63, 12802), (86, 12961), (96, 13114), (99, 13135), (100, 13180), (101, 13201), (102, 13216), (104, 13327),

Gene: Galactic_13 Start: 8552, Stop: 9488, Start Num: 13

Candidate Starts for Galactic_13:

(8, 8525), (Start: 13 @8552 has 66 MA's), (21, 8660), (28, 8690), (Start: 42 @8810 has 1 MA's), (44, 8813), (45, 8816), (51, 8843), (57, 8879), (61, 8897), (64, 8915), (65, 8918), (67, 8924), (70, 8939), (71, 8942), (73, 8987), (83, 9065), (84, 9071), (91, 9137), (97, 9284), (104, 9485),

Gene: Gandalph_13 Start: 8550, Stop: 9486, Start Num: 12

Candidate Starts for Gandalph_13:

(Start: 12 @8550 has 220 MA's), (Start: 13 @8556 has 66 MA's), (21, 8658), (28, 8688), (38, 8784), (Start: 42 @8808 has 1 MA's), (57, 8877), (61, 8895), (64, 8913), (65, 8916), (67, 8922), (70, 8937), (71, 8940), (73, 8985), (83, 9063), (91, 9135), (104, 9483),

Gene: Gator_19 Start: 12013, Stop: 12956, Start Num: 7

Candidate Starts for Gator_19:

(Start: 7 @12013 has 17 MA's), (Start: 12 @12085 has 220 MA's), (30, 12229), (Start: 42 @12322 has 1 MA's), (48, 12346), (50, 12358), (53, 12382), (60, 12400), (63, 12424), (86, 12583), (96, 12736), (99, 12757), (100, 12802), (101, 12823), (102, 12838), (104, 12949),

Gene: Gemini_23 Start: 12463, Stop: 13337, Start Num: 12

Candidate Starts for Gemini_23:

(Start: 7 @12391 has 17 MA's), (Start: 12 @12463 has 220 MA's), (30, 12607), (Start: 42 @12700 has 1 MA's), (48, 12724), (50, 12736), (53, 12760), (60, 12778), (63, 12802), (86, 12961), (96, 13114), (99, 13135), (100, 13180), (101, 13201), (102, 13216), (104, 13327),

Gene: Geralt_13 Start: 8532, Stop: 9468, Start Num: 12

Candidate Starts for Geralt_13:

(Start: 12 @8532 has 220 MA's), (Start: 13 @8538 has 66 MA's), (21, 8640), (28, 8670), (38, 8766), (Start: 42 @8790 has 1 MA's), (57, 8859), (61, 8877), (64, 8895), (65, 8898), (67, 8904), (70, 8919), (71, 8922), (73, 8967), (83, 9045), (91, 9117), (104, 9465),

Gene: Gex_15 Start: 9035, Stop: 9941, Start Num: 15

Candidate Starts for Gex_15:

(Start: 15 @9035 has 41 MA's), (25, 9143), (35, 9206), (49, 9311), (61, 9374), (62, 9380), (64, 9392), (65, 9395), (81, 9485), (89, 9587), (94, 9701), (98, 9758),

Gene: GigiOuiOui_13 Start: 8549, Stop: 9485, Start Num: 12

Candidate Starts for GigiOuiOui_13:

(Start: 12 @8549 has 220 MA's), (Start: 13 @8555 has 66 MA's), (21, 8657), (28, 8687), (38, 8783), (Start: 42 @8807 has 1 MA's), (57, 8876), (61, 8894), (64, 8912), (65, 8915), (67, 8921), (70, 8936), (71, 8939), (73, 8984), (83, 9062), (84, 9068), (91, 9134), (97, 9281), (104, 9482),

Gene: Girafales_14 Start: 8403, Stop: 9339, Start Num: 13

Candidate Starts for Girafales_14:

(8, 8376), (Start: 13 @8403 has 66 MA's), (21, 8511), (28, 8541), (Start: 42 @8661 has 1 MA's), (44, 8664), (45, 8667), (51, 8694), (57, 8730), (64, 8766), (65, 8769), (67, 8775), (70, 8790), (71, 8793), (73, 8838), (83, 8916), (84, 8922), (91, 8988), (97, 9135), (104, 9336),

Gene: Girr_13 Start: 8542, Stop: 9478, Start Num: 12

Candidate Starts for Girr_13:

(Start: 4 @8449 has 6 MA's), (Start: 12 @8542 has 220 MA's), (Start: 13 @8548 has 66 MA's), (21, 8650), (28, 8680), (38, 8776), (Start: 42 @8800 has 1 MA's), (44, 8803), (45, 8806), (57, 8869), (61, 8887), (64, 8905), (65, 8908), (67, 8914), (73, 8977), (83, 9055), (84, 9061), (91, 9127), (104, 9475),

Gene: Glexan_19 Start: 12014, Stop: 12957, Start Num: 7

Candidate Starts for Glexan_19:

(Start: 7 @12014 has 17 MA's), (Start: 12 @12086 has 220 MA's), (30, 12230), (Start: 42 @12323 has 1 MA's), (48, 12347), (50, 12359), (53, 12383), (60, 12401), (63, 12425), (86, 12584), (96, 12737), (99, 12758), (100, 12803), (101, 12824), (102, 12839), (104, 12950),

Gene: GoldenSpark_23 Start: 12463, Stop: 13334, Start Num: 12

Candidate Starts for GoldenSpark_23:

(Start: 7 @12391 has 17 MA's), (Start: 12 @12463 has 220 MA's), (30, 12607), (Start: 42 @12700 has 1 MA's), (48, 12724), (50, 12736), (53, 12760), (60, 12778), (63, 12802), (86, 12961), (96, 13114), (99, 13135), (100, 13180), (101, 13201), (102, 13216), (104, 13327),

Gene: Goldilocks_22 Start: 11880, Stop: 12751, Start Num: 12

Candidate Starts for Goldilocks_22:

(Start: 7 @11808 has 17 MA's), (Start: 12 @11880 has 220 MA's), (30, 12024), (Start: 42 @12117 has 1 MA's), (48, 12141), (50, 12153), (53, 12177), (60, 12195), (63, 12219), (86, 12378), (96, 12531), (99, 12552), (100, 12597), (101, 12618), (102, 12633), (104, 12744),

Gene: GooberAzure_23 Start: 12463, Stop: 13334, Start Num: 12

Candidate Starts for GooberAzure_23:

(Start: 7 @12391 has 17 MA's), (Start: 12 @12463 has 220 MA's), (30, 12607), (Start: 42 @12700 has 1 MA's), (48, 12724), (50, 12736), (53, 12760), (60, 12778), (63, 12802), (86, 12961), (96, 13114), (99, 13135), (100, 13180), (101, 13201), (102, 13216), (104, 13327),

Gene: Gorge_13 Start: 8521, Stop: 9457, Start Num: 12

Candidate Starts for Gorge_13:

(Start: 12 @8521 has 220 MA's), (Start: 13 @8527 has 66 MA's), (21, 8629), (28, 8659), (38, 8755), (Start: 42 @8779 has 1 MA's), (57, 8848), (61, 8866), (64, 8884), (65, 8887), (67, 8893), (70, 8908), (71, 8911), (73, 8956), (83, 9034), (91, 9106), (104, 9454),

Gene: Guppsters_13 Start: 8577, Stop: 9513, Start Num: 13

Candidate Starts for Guppsters_13:

(8, 8550), (Start: 13 @8577 has 66 MA's), (21, 8685), (28, 8715), (Start: 42 @8835 has 1 MA's), (51, 8868), (57, 8904), (61, 8922), (64, 8940), (67, 8949), (73, 9012), (83, 9090), (91, 9162), (104, 9510),

Gene: Hades_13 Start: 8539, Stop: 9475, Start Num: 12

Candidate Starts for Hades_13:

(Start: 4 @8446 has 6 MA's), (Start: 12 @8539 has 220 MA's), (Start: 13 @8545 has 66 MA's), (21, 8647), (28, 8677), (38, 8773), (Start: 42 @8797 has 1 MA's), (44, 8800), (45, 8803), (57, 8866), (61, 8884), (64, 8902), (67, 8911), (73, 8974), (83, 9052), (84, 9058), (91, 9124), (104, 9472),

Gene: Hamulus_13 Start: 8583, Stop: 9519, Start Num: 13

Candidate Starts for Hamulus_13:

(8, 8556), (Start: 13 @8583 has 66 MA's), (21, 8691), (28, 8721), (Start: 42 @8841 has 1 MA's), (51, 8874), (57, 8910), (61, 8928), (64, 8946), (67, 8955), (70, 8970), (71, 8973), (73, 9018), (83, 9096), (84, 9102), (91, 9168), (97, 9315), (104, 9516),

Gene: HanKaySha_22 Start: 12218, Stop: 13089, Start Num: 12

Candidate Starts for HanKaySha_22:

(Start: 7 @12146 has 17 MA's), (Start: 12 @12218 has 220 MA's), (30, 12362), (Start: 42 @12455 has 1 MA's), (48, 12479), (50, 12491), (53, 12515), (60, 12533), (63, 12557), (86, 12716), (96, 12869), (99, 12890), (100, 12935), (101, 12956), (102, 12971), (104, 13082),

Gene: Hanako_15 Start: 9081, Stop: 9987, Start Num: 15

Candidate Starts for Hanako_15:

(Start: 15 @9081 has 41 MA's), (24, 9180), (25, 9189), (35, 9252), (38, 9300), (49, 9357), (61, 9420), (62, 9426), (64, 9438), (65, 9441), (80, 9528), (81, 9531), (89, 9633), (94, 9747), (98, 9804),

Gene: Harella_19 Start: 12086, Stop: 12960, Start Num: 12

Candidate Starts for Harella_19:

(Start: 7 @12014 has 17 MA's), (Start: 12 @12086 has 220 MA's), (30, 12230), (Start: 42 @12323 has 1 MA's), (48, 12347), (50, 12359), (53, 12383), (60, 12401), (63, 12425), (86, 12584), (96, 12737), (99, 12758), (100, 12803), (101, 12824), (102, 12839), (104, 12950),

Gene: Harley_13 Start: 8528, Stop: 9464, Start Num: 12

Candidate Starts for Harley_13:

(Start: 4 @8435 has 6 MA's), (Start: 12 @8528 has 220 MA's), (Start: 13 @8534 has 66 MA's), (21, 8636), (28, 8666), (38, 8762), (Start: 42 @8786 has 1 MA's), (51, 8819), (61, 8873), (64, 8891), (67, 8900), (73, 8963), (83, 9041), (91, 9113), (104, 9461),

Gene: Hegedechwinu_14 Start: 8409, Stop: 9345, Start Num: 13

Candidate Starts for Hegedechwinu_14:

(8, 8382), (Start: 13 @8409 has 66 MA's), (21, 8517), (26, 8541), (28, 8547), (Start: 42 @8667 has 1 MA's), (44, 8670), (45, 8673), (51, 8700), (57, 8736), (61, 8754), (64, 8772), (65, 8775), (67, 8781), (70, 8796), (71, 8799), (73, 8844), (83, 8922), (84, 8928), (91, 8994), (97, 9141), (104, 9342),

Gene: Henry_20 Start: 12469, Stop: 13340, Start Num: 12

Candidate Starts for Henry_20:

(Start: 7 @12397 has 17 MA's), (Start: 12 @12469 has 220 MA's), (30, 12613), (Start: 42 @12706 has 1 MA's), (48, 12730), (50, 12742), (53, 12766), (60, 12784), (63, 12808), (86, 12967), (96, 13120), (99, 13141), (100, 13186), (101, 13207), (102, 13222), (104, 13333),

Gene: Highbury_22 Start: 12137, Stop: 13008, Start Num: 12

Candidate Starts for Highbury_22:

(Start: 7 @12065 has 17 MA's), (Start: 12 @12137 has 220 MA's), (30, 12281), (Start: 42 @12374 has 1 MA's), (48, 12398), (50, 12410), (53, 12434), (60, 12452), (63, 12476), (86, 12635), (96, 12788), (99, 12809), (100, 12854), (101, 12875), (102, 12890), (104, 13001),

Gene: Hlubikazi_13 Start: 8534, Stop: 9470, Start Num: 12

Candidate Starts for Hlubikazi_13:

(Start: 12 @8534 has 220 MA's), (Start: 13 @8540 has 66 MA's), (21, 8642), (28, 8672), (38, 8768), (Start: 42 @8792 has 1 MA's), (57, 8861), (61, 8879), (64, 8897), (65, 8900), (67, 8906), (70, 8921), (71, 8924), (73, 8969), (83, 9047), (91, 9119), (104, 9467),

Gene: Holt_22 Start: 11753, Stop: 12624, Start Num: 12

Candidate Starts for Holt_22:

(Start: 7 @11681 has 17 MA's), (Start: 12 @11753 has 220 MA's), (30, 11897), (Start: 42 @11990 has 1 MA's), (48, 12014), (50, 12026), (53, 12050), (60, 12068), (63, 12092), (86, 12251), (96, 12404), (99, 12425), (100, 12470), (101, 12491), (102, 12506), (104, 12617),

Gene: Hoonter_23 Start: 12463, Stop: 13334, Start Num: 12

Candidate Starts for Hoonter_23:

(Start: 7 @12391 has 17 MA's), (Start: 12 @12463 has 220 MA's), (30, 12607), (Start: 42 @12700 has 1 MA's), (48, 12724), (50, 12736), (53, 12760), (60, 12778), (63, 12802), (86, 12961), (96, 13114), (99, 13135), (100, 13180), (101, 13201), (102, 13216), (104, 13327),

Gene: Hopey_22 Start: 12156, Stop: 13102, Start Num: 7

Candidate Starts for Hopey_22:

(Start: 7 @12156 has 17 MA's), (Start: 12 @12228 has 220 MA's), (30, 12372), (Start: 42 @12465 has 1 MA's), (48, 12489), (50, 12501), (53, 12525), (60, 12543), (63, 12567), (86, 12726), (96, 12879), (99, 12900), (100, 12945), (101, 12966), (102, 12981), (104, 13092),

Gene: IHOP_20 Start: 12057, Stop: 13003, Start Num: 7

Candidate Starts for IHOP_20:

(Start: 7 @12057 has 17 MA's), (Start: 12 @12129 has 220 MA's), (30, 12273), (Start: 42 @12366 has 1 MA's), (48, 12390), (50, 12402), (53, 12426), (60, 12444), (63, 12468), (86, 12627), (96, 12780), (99, 12801), (100, 12846), (101, 12867), (102, 12882), (104, 12993),

Gene: Ibhubesi_12 Start: 8528, Stop: 9464, Start Num: 12

Candidate Starts for Ibhubesi_12:

(Start: 4 @8435 has 6 MA's), (Start: 12 @8528 has 220 MA's), (Start: 13 @8534 has 66 MA's), (21, 8636), (28, 8666), (38, 8762), (Start: 42 @8786 has 1 MA's), (51, 8819), (61, 8873), (64, 8891), (67, 8900), (73, 8963), (83, 9041), (91, 9113), (104, 9461),

Gene: Icee_20 Start: 12129, Stop: 13000, Start Num: 12

Candidate Starts for Icee_20:

(Start: 7 @12057 has 17 MA's), (Start: 12 @12129 has 220 MA's), (30, 12273), (Start: 42 @12366 has 1 MA's), (48, 12390), (50, 12402), (53, 12426), (60, 12444), (63, 12468), (86, 12627), (96, 12780), (99, 12801), (100, 12846), (101, 12867), (102, 12882), (104, 12993),

Gene: Inca_20 Start: 11149, Stop: 12020, Start Num: 12

Candidate Starts for Inca_20:

(Start: 7 @11077 has 17 MA's), (Start: 12 @11149 has 220 MA's), (30, 11293), (Start: 42 @11386 has 1 MA's), (48, 11410), (50, 11422), (53, 11446), (60, 11464), (63, 11488), (86, 11647), (96, 11800), (99, 11821), (100, 11866), (101, 11887), (102, 11902), (104, 12013),

Gene: Inventum_13 Start: 8532, Stop: 9468, Start Num: 12

Candidate Starts for Inventum_13:

(Start: 12 @8532 has 220 MA's), (Start: 13 @8538 has 66 MA's), (21, 8640), (28, 8670), (38, 8766), (Start: 42 @8790 has 1 MA's), (57, 8859), (61, 8877), (64, 8895), (65, 8898), (67, 8904), (70, 8919), (71, 8922), (73, 8967), (83, 9045), (91, 9117), (104, 9465),

Gene: IrishSherpFalk_13 Start: 8563, Stop: 9499, Start Num: 13

Candidate Starts for IrishSherpFalk_13:

(8, 8536), (Start: 13 @8563 has 66 MA's), (21, 8671), (28, 8701), (Start: 42 @8821 has 1 MA's), (51, 8854), (57, 8890), (61, 8908), (64, 8926), (67, 8935), (73, 8998), (83, 9076), (91, 9148), (104, 9496),

Gene: JalFarm20_14 Start: 8385, Stop: 9321, Start Num: 12

Candidate Starts for JalFarm20_14:

(Start: 12 @8385 has 220 MA's), (Start: 13 @8391 has 66 MA's), (21, 8493), (28, 8523), (38, 8619), (Start: 42 @8643 has 1 MA's), (57, 8712), (61, 8730), (64, 8748), (65, 8751), (67, 8757), (70, 8772), (71, 8775), (73, 8820), (83, 8898), (91, 8970), (104, 9318),

Gene: James_13 Start: 8529, Stop: 9465, Start Num: 12

Candidate Starts for James_13:

(Start: 4 @8436 has 6 MA's), (Start: 12 @8529 has 220 MA's), (Start: 13 @8535 has 66 MA's), (21, 8637), (28, 8667), (38, 8763), (Start: 42 @8787 has 1 MA's), (44, 8790), (45, 8793), (57, 8856), (61, 8874), (64, 8892), (67, 8901), (73, 8964), (83, 9042), (91, 9114), (104, 9462),

Gene: Jamie19_15 Start: 9081, Stop: 9987, Start Num: 15

Candidate Starts for Jamie19_15:

(Start: 15 @9081 has 41 MA's), (24, 9180), (25, 9189), (35, 9252), (38, 9300), (49, 9357), (61, 9420), (62, 9426), (64, 9438), (65, 9441), (80, 9528), (81, 9531), (89, 9633), (94, 9747), (98, 9804),

Gene: JangDynasty_53 Start: 25854, Stop: 26793, Start Num: 10

Candidate Starts for JangDynasty_53:

(Start: 9 @25842 has 15 MA's), (Start: 10 @25854 has 3 MA's), (16, 25926), (22, 25971), (23, 25974), (28, 25998), (31, 26016), (35, 26046), (43, 26124), (44, 26127), (56, 26184), (61, 26208), (73, 26283), (84, 26367), (91, 26433), (93, 26529),

Gene: Jacob_13 Start: 8537, Stop: 9473, Start Num: 12

Candidate Starts for Jacob_13:

(Start: 4 @8444 has 6 MA's), (Start: 12 @8537 has 220 MA's), (Start: 13 @8543 has 66 MA's), (21, 8645), (28, 8675), (38, 8771), (Start: 42 @8795 has 1 MA's), (44, 8798), (45, 8801), (57, 8864), (61, 8882), (64, 8900), (67, 8909), (73, 8972), (83, 9050), (91, 9122), (104, 9470),

Gene: JeTaime_23 Start: 13268, Stop: 14139, Start Num: 12

Candidate Starts for JeTaime_23:

(Start: 7 @13196 has 17 MA's), (Start: 12 @13268 has 220 MA's), (30, 13412), (Start: 42 @13505 has 1 MA's), (48, 13529), (50, 13541), (53, 13565), (60, 13583), (63, 13607), (86, 13766), (96, 13919), (99, 13940), (100, 13985), (101, 14006), (102, 14021), (104, 14132),

Gene: Job42_14 Start: 8408, Stop: 9344, Start Num: 13

Candidate Starts for Job42_14:

(8, 8381), (Start: 13 @8408 has 66 MA's), (21, 8516), (28, 8546), (Start: 42 @8666 has 1 MA's), (44, 8669), (45, 8672), (51, 8699), (57, 8735), (61, 8753), (64, 8771), (65, 8774), (67, 8780), (70, 8795), (71, 8798), (73, 8843), (83, 8921), (84, 8927), (91, 8993), (97, 9140), (104, 9341),

Gene: JoeyJr_13 Start: 8532, Stop: 9468, Start Num: 12

Candidate Starts for JoeyJr_13:

(Start: 12 @8532 has 220 MA's), (Start: 13 @8538 has 66 MA's), (21, 8640), (28, 8670), (38, 8766), (Start: 42 @8790 has 1 MA's), (57, 8859), (61, 8877), (64, 8895), (65, 8898), (67, 8904), (70, 8919), (71, 8922), (73, 8967), (83, 9045), (91, 9117), (104, 9465),

Gene: Journey_15 Start: 9036, Stop: 9942, Start Num: 15

Candidate Starts for Journey_15:

(Start: 15 @9036 has 41 MA's), (25, 9144), (35, 9207), (38, 9255), (49, 9312), (61, 9375), (62, 9381), (64, 9393), (65, 9396), (81, 9486), (89, 9588), (94, 9702), (98, 9759),

Gene: Juice456_14 Start: 8391, Stop: 9327, Start Num: 12

Candidate Starts for Juice456_14:

(Start: 4 @8298 has 6 MA's), (Start: 12 @8391 has 220 MA's), (Start: 13 @8397 has 66 MA's), (21, 8499), (26, 8523), (28, 8529), (38, 8625), (Start: 42 @8649 has 1 MA's), (44, 8652), (45, 8655), (57, 8718), (61, 8736), (64, 8754), (67, 8763), (70, 8778), (71, 8781), (73, 8826), (83, 8904), (91, 8976), (104, 9324),

Gene: Juniper1_13 Start: 8529, Stop: 9465, Start Num: 12

Candidate Starts for Juniper1_13:

(Start: 4 @8436 has 6 MA's), (Start: 12 @8529 has 220 MA's), (Start: 13 @8535 has 66 MA's), (21, 8637), (26, 8661), (28, 8667), (38, 8763), (Start: 42 @8787 has 1 MA's), (51, 8820), (61, 8874), (65, 8895), (67, 8901), (73, 8964), (83, 9042), (91, 9114), (104, 9462),

Gene: Kanye_23 Start: 13384, Stop: 14327, Start Num: 7

Candidate Starts for Kanye_23:

(Start: 7 @13384 has 17 MA's), (Start: 12 @13456 has 220 MA's), (30, 13600), (Start: 42 @13693 has 1 MA's), (48, 13717), (50, 13729), (53, 13753), (60, 13771), (63, 13795), (86, 13954), (96, 14107), (99, 14128), (100, 14173), (101, 14194), (102, 14209), (104, 14320),

Gene: Karhdo_13 Start: 8447, Stop: 9476, Start Num: 4

Candidate Starts for Karhdo_13:

(Start: 4 @8447 has 6 MA's), (Start: 12 @8540 has 220 MA's), (Start: 13 @8546 has 66 MA's), (21, 8648), (26, 8672), (28, 8678), (38, 8774), (Start: 42 @8798 has 1 MA's), (44, 8801), (45, 8804), (51, 8831), (57, 8867), (61, 8885), (64, 8903), (67, 8912), (73, 8975), (83, 9053), (91, 9125), (104, 9473),

Gene: Kenuha5_13 Start: 8545, Stop: 9481, Start Num: 13

Candidate Starts for Kenuha5_13:

(8, 8518), (Start: 13 @8545 has 66 MA's), (21, 8653), (26, 8677), (28, 8683), (Start: 42 @8803 has 1 MA's), (51, 8836), (57, 8872), (61, 8890), (64, 8908), (67, 8917), (70, 8932), (71, 8935), (73, 8980), (83, 9058), (84, 9064), (91, 9130), (97, 9277), (104, 9478),

Gene: Kersh_13 Start: 8532, Stop: 9468, Start Num: 12

Candidate Starts for Kersh_13:

(2, 8364), (3, 8433), (Start: 12 @8532 has 220 MA's), (Start: 13 @8538 has 66 MA's), (21, 8640), (28, 8670), (38, 8766), (Start: 42 @8790 has 1 MA's), (44, 8793), (45, 8796), (51, 8823), (61, 8877), (64, 8895), (67, 8904), (73, 8967), (83, 9045), (91, 9117), (104, 9465),

Gene: Kevin1_15 Start: 9056, Stop: 9962, Start Num: 15

Candidate Starts for Kevin1_15:

(Start: 15 @9056 has 41 MA's), (25, 9164), (27, 9176), (35, 9227), (38, 9275), (49, 9332), (61, 9395), (62, 9401), (65, 9416), (81, 9506), (84, 9554), (94, 9722), (98, 9779),

Gene: Kimberlium_13 Start: 8298, Stop: 9327, Start Num: 4

Candidate Starts for Kimberlium_13:

(Start: 4 @8298 has 6 MA's), (Start: 12 @8391 has 220 MA's), (Start: 13 @8397 has 66 MA's), (21, 8499), (26, 8523), (28, 8529), (38, 8625), (Start: 42 @8649 has 1 MA's), (44, 8652), (45, 8655), (57, 8718), (61, 8736), (64, 8754), (67, 8763), (70, 8778), (71, 8781), (73, 8826), (83, 8904), (91, 8976), (104, 9324),

Gene: Kimchi_23 Start: 12463, Stop: 13334, Start Num: 12

Candidate Starts for Kimchi_23:

(Start: 7 @12391 has 17 MA's), (Start: 12 @12463 has 220 MA's), (30, 12607), (Start: 42 @12700 has 1 MA's), (48, 12724), (50, 12736), (53, 12760), (60, 12778), (63, 12802), (86, 12961), (96, 13114), (99, 13135), (100, 13180), (101, 13201), (102, 13216), (104, 13327),

Gene: KingMidas_13 Start: 8532, Stop: 9468, Start Num: 12

Candidate Starts for KingMidas_13:

(Start: 12 @8532 has 220 MA's), (Start: 13 @8538 has 66 MA's), (21, 8640), (28, 8670), (38, 8766), (Start: 42 @8790 has 1 MA's), (57, 8859), (61, 8877), (64, 8895), (65, 8898), (67, 8904), (70, 8919), (71, 8922), (73, 8967), (83, 9045), (84, 9051), (91, 9117), (104, 9465),

Gene: Kingsley_14 Start: 8383, Stop: 9319, Start Num: 12

Candidate Starts for Kingsley_14:

(Start: 12 @8383 has 220 MA's), (Start: 13 @8389 has 66 MA's), (21, 8491), (28, 8521), (38, 8617), (Start: 42 @8641 has 1 MA's), (57, 8710), (61, 8728), (64, 8746), (65, 8749), (67, 8755), (70, 8770), (71, 8773), (73, 8818), (83, 8896), (91, 8968), (104, 9316),

Gene: Koella_13 Start: 8532, Stop: 9468, Start Num: 12

Candidate Starts for Koella_13:

(Start: 12 @8532 has 220 MA's), (Start: 13 @8538 has 66 MA's), (21, 8640), (28, 8670), (38, 8766), (Start: 42 @8790 has 1 MA's), (57, 8859), (61, 8877), (64, 8895), (65, 8898), (67, 8904), (70, 8919), (71, 8922), (73, 8967), (83, 9045), (91, 9117), (104, 9465),

Gene: Krakatau_14 Start: 9229, Stop: 10165, Start Num: 13

Candidate Starts for Krakatau_14:

(8, 9202), (Start: 13 @9229 has 66 MA's), (21, 9337), (28, 9367), (Start: 42 @9487 has 1 MA's), (44, 9490), (45, 9493), (51, 9520), (57, 9556), (61, 9574), (64, 9592), (67, 9601), (70, 9616), (71, 9619), (73, 9664), (83, 9742), (84, 9748), (91, 9814), (97, 9961), (104, 10162),

Gene: Krili_52 Start: 25464, Stop: 26415, Start Num: 9

Candidate Starts for Krili_52:

(Start: 9 @25464 has 15 MA's), (Start: 10 @25476 has 3 MA's), (16, 25548), (22, 25593), (23, 25596), (28, 25620), (31, 25638), (35, 25668), (43, 25746), (44, 25749), (56, 25806), (61, 25830), (73, 25905), (84, 25989), (91, 26055), (93, 26151),

Gene: KristaRAM_14 Start: 9226, Stop: 10162, Start Num: 13

Candidate Starts for KristaRAM_14:

(8, 9199), (Start: 13 @9226 has 66 MA's), (21, 9334), (28, 9364), (Start: 42 @9484 has 1 MA's), (51, 9517), (57, 9553), (61, 9571), (64, 9589), (65, 9592), (67, 9598), (70, 9613), (71, 9616), (73, 9661), (83, 9739), (84, 9745), (91, 9811), (97, 9958), (104, 10159),

Gene: LastJedi_13 Start: 8528, Stop: 9464, Start Num: 12

Candidate Starts for LastJedi_13:

(Start: 12 @8528 has 220 MA's), (Start: 13 @8534 has 66 MA's), (21, 8636), (28, 8666), (38, 8762), (Start: 42 @8786 has 1 MA's), (44, 8789), (45, 8792), (57, 8855), (61, 8873), (64, 8891), (67, 8900), (73, 8963), (83, 9041), (91, 9113), (104, 9461),

Gene: Latretium_13 Start: 8521, Stop: 9457, Start Num: 12

Candidate Starts for Latretium_13:

(Start: 12 @8521 has 220 MA's), (Start: 13 @8527 has 66 MA's), (21, 8629), (28, 8659), (38, 8755), (Start: 42 @8779 has 1 MA's), (57, 8848), (61, 8866), (64, 8884), (65, 8887), (67, 8893), (70, 8908), (71, 8911), (73, 8956), (83, 9034), (91, 9106), (104, 9454),

Gene: Leozinho_14 Start: 8390, Stop: 9326, Start Num: 12

Candidate Starts for Leozinho_14:

(3, 8291), (Start: 12 @8390 has 220 MA's), (Start: 13 @8396 has 66 MA's), (21, 8498), (28, 8528), (38, 8624), (Start: 42 @8648 has 1 MA's), (44, 8651), (45, 8654), (51, 8681), (57, 8717), (61, 8735), (64, 8753), (67, 8762), (73, 8825), (83, 8903), (91, 8975), (104, 9323),

Gene: Leperchaun_13 Start: 8521, Stop: 9457, Start Num: 12

Candidate Starts for Leperchaun_13:

(Start: 12 @8521 has 220 MA's), (Start: 13 @8527 has 66 MA's), (21, 8629), (28, 8659), (38, 8755), (Start: 42 @8779 has 1 MA's), (57, 8848), (61, 8866), (64, 8884), (65, 8887), (67, 8893), (70, 8908), (71, 8911), (73, 8956), (83, 9034), (91, 9106), (104, 9454),

Gene: LilMoolah_12 Start: 8675, Stop: 9437, Start Num: 29

Candidate Starts for LilMoolah_12:

(Start: 29 @8675 has 1 MA's), (30, 8678), (36, 8723), (Start: 42 @8759 has 1 MA's), (57, 8828), (61, 8846), (64, 8864), (65, 8867), (67, 8873), (70, 8888), (71, 8891), (73, 8936), (83, 9014), (91, 9086), (104, 9434),

Gene: Lilizi_23 Start: 12175, Stop: 13046, Start Num: 12

Candidate Starts for Lilizi_23:

(Start: 7 @12103 has 17 MA's), (Start: 12 @12175 has 220 MA's), (30, 12319), (Start: 42 @12412 has 1 MA's), (48, 12436), (50, 12448), (53, 12472), (60, 12490), (63, 12514), (86, 12673), (96, 12826), (99, 12847), (100, 12892), (101, 12913), (102, 12928), (104, 13039),

Gene: Lilpickle_20 Start: 11683, Stop: 12554, Start Num: 12

Candidate Starts for Lilpickle_20:

(Start: 7 @11611 has 17 MA's), (Start: 12 @11683 has 220 MA's), (30, 11827), (Start: 42 @11920 has 1 MA's), (48, 11944), (50, 11956), (53, 11980), (60, 11998), (63, 12022), (86, 12181), (96, 12334), (99, 12355), (100, 12400), (101, 12421), (102, 12436), (104, 12547),

Gene: LittleShirley_14 Start: 8386, Stop: 9322, Start Num: 12

Candidate Starts for LittleShirley_14:

(Start: 12 @8386 has 220 MA's), (Start: 13 @8392 has 66 MA's), (21, 8494), (28, 8524), (38, 8620), (Start: 42 @8644 has 1 MA's), (57, 8713), (61, 8731), (64, 8749), (65, 8752), (67, 8758), (70, 8773), (71, 8776), (73, 8821), (83, 8899), (91, 8971), (97, 9118), (104, 9319),

Gene: Lizziana_13 Start: 8538, Stop: 9474, Start Num: 12

Candidate Starts for Lizziana_13:

(Start: 4 @8445 has 6 MA's), (Start: 12 @8538 has 220 MA's), (Start: 13 @8544 has 66 MA's), (21, 8646), (28, 8676), (38, 8772), (Start: 42 @8796 has 1 MA's), (44, 8799), (45, 8802), (57, 8865), (61, 8883), (64, 8901), (67, 8910), (73, 8973), (83, 9051), (91, 9123), (104, 9471),

Gene: Llama_13 Start: 8535, Stop: 9471, Start Num: 12

Candidate Starts for Llama_13:

(Start: 4 @8442 has 6 MA's), (Start: 12 @8535 has 220 MA's), (Start: 13 @8541 has 66 MA's), (21, 8643), (28, 8673), (38, 8769), (Start: 42 @8793 has 1 MA's), (44, 8796), (45, 8799), (51, 8826), (57, 8862), (61, 8880), (64, 8898), (67, 8907), (73, 8970), (83, 9048), (91, 9120), (104, 9468),

Gene: Lorde_14 Start: 8390, Stop: 9326, Start Num: 12

Candidate Starts for Lorde_14:

(Start: 4 @8297 has 6 MA's), (Start: 12 @8390 has 220 MA's), (Start: 13 @8396 has 66 MA's), (21, 8498), (28, 8528), (Start: 42 @8648 has 1 MA's), (57, 8717), (61, 8735), (64, 8753), (67, 8762), (73, 8825), (83, 8903), (84, 8909), (91, 8975), (104, 9323),

Gene: LunaBlu_13 Start: 8552, Stop: 9488, Start Num: 13

Candidate Starts for LunaBlu_13:

(8, 8525), (Start: 13 @8552 has 66 MA's), (21, 8660), (26, 8684), (28, 8690), (Start: 42 @8810 has 1 MA's), (44, 8813), (45, 8816), (51, 8843), (57, 8879), (61, 8897), (64, 8915), (65, 8918), (67, 8924), (70, 8939), (71, 8942), (73, 8987), (83, 9065), (84, 9071), (91, 9137), (97, 9284), (104, 9485),

Gene: LunaStella_14 Start: 8979, Stop: 9921, Start Num: 12

Candidate Starts for LunaStella_14:

(Start: 12 @8979 has 220 MA's), (16, 9051), (19, 9072), (20, 9075), (22, 9096), (28, 9123), (34, 9159), (51, 9276), (58, 9327), (73, 9435), (80, 9468), (83, 9513), (84, 9519), (91, 9585),

Gene: MISSy_20 Start: 11979, Stop: 12850, Start Num: 12

Candidate Starts for MISSy_20:

(Start: 7 @11907 has 17 MA's), (Start: 12 @11979 has 220 MA's), (30, 12123), (Start: 42 @12216 has 1 MA's), (48, 12240), (50, 12252), (53, 12276), (60, 12294), (63, 12318), (86, 12477), (96, 12630), (99, 12651), (100, 12696), (101, 12717), (102, 12732), (104, 12843),

Gene: MPhalcon_20 Start: 11979, Stop: 12850, Start Num: 12

Candidate Starts for MPhalcon_20:

(Start: 7 @11907 has 17 MA's), (Start: 12 @11979 has 220 MA's), (30, 12123), (Start: 42 @12216 has 1 MA's), (48, 12240), (50, 12252), (53, 12276), (60, 12294), (63, 12318), (86, 12477), (96, 12630), (99, 12651), (100, 12696), (101, 12717), (102, 12732), (104, 12843),

Gene: MadMen_13 Start: 8561, Stop: 9497, Start Num: 12

Candidate Starts for MadMen_13:

(Start: 12 @8561 has 220 MA's), (Start: 13 @8567 has 66 MA's), (21, 8669), (28, 8699), (Start: 42 @8819 has 1 MA's), (57, 8888), (61, 8906), (64, 8924), (67, 8933), (70, 8948), (71, 8951), (73, 8996), (83, 9074), (91, 9146), (104, 9494),

Gene: MadamMonkfish_21 Start: 11894, Stop: 12765, Start Num: 12

Candidate Starts for MadamMonkfish_21:

(Start: 7 @11822 has 17 MA's), (Start: 12 @11894 has 220 MA's), (30, 12038), (Start: 42 @12131 has 1 MA's), (48, 12155), (50, 12167), (53, 12191), (60, 12209), (63, 12233), (86, 12392), (96, 12545), (99, 12566), (100, 12611), (101, 12632), (102, 12647), (104, 12758),

Gene: Madiba_14 Start: 8404, Stop: 9340, Start Num: 13

Candidate Starts for Madiba_14:

(8, 8377), (Start: 13 @8404 has 66 MA's), (21, 8512), (28, 8542), (Start: 42 @8662 has 1 MA's), (51, 8695), (57, 8731), (61, 8749), (64, 8767), (67, 8776), (70, 8791), (71, 8794), (73, 8839), (83, 8917), (84, 8923), (91, 8989), (97, 9136), (104, 9337),

Gene: Magsby_15 Start: 9036, Stop: 9942, Start Num: 15

Candidate Starts for Magsby_15:

(Start: 15 @9036 has 41 MA's), (25, 9144), (35, 9207), (38, 9255), (49, 9312), (61, 9375), (62, 9381), (64, 9393), (65, 9396), (81, 9486), (89, 9588), (94, 9702), (98, 9759),

Gene: Mahavrat_13 Start: 8526, Stop: 9462, Start Num: 12

Candidate Starts for Mahavrat_13:

(Start: 4 @8433 has 6 MA's), (Start: 12 @8526 has 220 MA's), (Start: 13 @8532 has 66 MA's), (21, 8634), (26, 8658), (28, 8664), (38, 8760), (Start: 42 @8784 has 1 MA's), (51, 8817), (61, 8871), (65, 8892), (67, 8898), (73, 8961), (83, 9039), (91, 9111), (104, 9459),

Gene: Mandlovu_13 Start: 8534, Stop: 9470, Start Num: 12

Candidate Starts for Mandlovu_13:

(Start: 12 @8534 has 220 MA's), (Start: 13 @8540 has 66 MA's), (21, 8642), (28, 8672), (38, 8768), (Start: 42 @8792 has 1 MA's), (57, 8861), (61, 8879), (64, 8897), (65, 8900), (67, 8906), (70, 8921), (71, 8924), (73, 8969), (83, 9047), (91, 9119), (104, 9467),

Gene: Mantra_13 Start: 8549, Stop: 9485, Start Num: 12

Candidate Starts for Mantra_13:

(Start: 12 @8549 has 220 MA's), (Start: 13 @8555 has 66 MA's), (21, 8657), (28, 8687), (38, 8783), (Start: 42 @8807 has 1 MA's), (57, 8876), (61, 8894), (64, 8912), (65, 8915), (67, 8921), (71, 8939), (73, 8984), (83, 9062), (91, 9134), (104, 9482),

Gene: Maravista_13 Start: 8526, Stop: 9462, Start Num: 12

Candidate Starts for Maravista_13:

(Start: 4 @8433 has 6 MA's), (Start: 12 @8526 has 220 MA's), (Start: 13 @8532 has 66 MA's), (21, 8634), (28, 8664), (38, 8760), (Start: 42 @8784 has 1 MA's), (44, 8787), (45, 8790), (57, 8853), (61, 8871), (64, 8889), (67, 8898), (73, 8961), (83, 9039), (91, 9111), (104, 9459),

Gene: Marker_14 Start: 8397, Stop: 9333, Start Num: 12

Candidate Starts for Marker_14:

(Start: 12 @8397 has 220 MA's), (21, 8505), (28, 8535), (38, 8631), (Start: 42 @8655 has 1 MA's), (44, 8658), (45, 8661), (51, 8688), (57, 8724), (61, 8742), (64, 8760), (65, 8763), (67, 8769), (70, 8784), (71, 8787), (73, 8832), (83, 8910), (84, 8916), (91, 8982), (97, 9129), (104, 9330),

Gene: Marshmallow_21 Start: 12469, Stop: 13340, Start Num: 12

Candidate Starts for Marshmallow_21:

(Start: 7 @12397 has 17 MA's), (Start: 12 @12469 has 220 MA's), (30, 12613), (Start: 42 @12706 has 1 MA's), (48, 12730), (50, 12742), (53, 12766), (60, 12784), (63, 12808), (86, 12967), (96, 13120), (99, 13141), (100, 13186), (101, 13207), (102, 13222), (104, 13333),

Gene: Martik_13 Start: 8538, Stop: 9474, Start Num: 12

Candidate Starts for Martik_13:

(Start: 4 @8445 has 6 MA's), (Start: 12 @8538 has 220 MA's), (Start: 13 @8544 has 66 MA's), (21, 8646), (28, 8676), (38, 8772), (Start: 42 @8796 has 1 MA's), (44, 8799), (45, 8802), (57, 8865), (61, 8883), (64, 8901), (67, 8910), (73, 8973), (83, 9051), (91, 9123), (104, 9471),

Gene: Mattes_13 Start: 8529, Stop: 9465, Start Num: 12

Candidate Starts for Mattes_13:

(Start: 4 @8436 has 6 MA's), (Start: 12 @8529 has 220 MA's), (Start: 13 @8535 has 66 MA's), (21, 8637), (28, 8667), (38, 8763), (Start: 42 @8787 has 1 MA's), (44, 8790), (45, 8793), (57, 8856), (61, 8874), (64, 8892), (67, 8901), (73, 8964), (83, 9042), (91, 9114), (104, 9462),

Gene: Maxxinista_22 Start: 11871, Stop: 12814, Start Num: 7

Candidate Starts for Maxxinista_22:

(Start: 7 @11871 has 17 MA's), (Start: 12 @11943 has 220 MA's), (30, 12087), (Start: 42 @12180 has 1 MA's), (48, 12204), (50, 12216), (53, 12240), (60, 12258), (63, 12282), (86, 12441), (96, 12594), (99, 12615), (100, 12660), (101, 12681), (102, 12696), (104, 12807),

Gene: Melissauren88_13 Start: 8577, Stop: 9513, Start Num: 13

Candidate Starts for Melissauren88_13:

(8, 8550), (Start: 13 @8577 has 66 MA's), (21, 8685), (28, 8715), (Start: 42 @8835 has 1 MA's), (51, 8868), (57, 8904), (61, 8922), (64, 8940), (65, 8943), (67, 8949), (70, 8964), (71, 8967), (73, 9012), (83, 9090), (84, 9096), (91, 9162), (97, 9309), (104, 9510),

Gene: Melville_15 Start: 9036, Stop: 9942, Start Num: 15

Candidate Starts for Melville_15:

(Start: 15 @9036 has 41 MA's), (25, 9144), (35, 9207), (38, 9255), (49, 9312), (61, 9375), (62, 9381), (64, 9393), (65, 9396), (81, 9486), (89, 9588), (94, 9702), (98, 9759),

Gene: MichelleMyBell_15 Start: 9075, Stop: 9981, Start Num: 15

Candidate Starts for MichelleMyBell_15:

(Start: 15 @9075 has 41 MA's), (25, 9183), (27, 9195), (35, 9246), (38, 9294), (49, 9351), (61, 9414), (62, 9420), (65, 9435), (81, 9525), (84, 9573), (94, 9741), (98, 9798),

Gene: MilanaBonita_14 Start: 9227, Stop: 10163, Start Num: 13

Candidate Starts for MilanaBonita_14:

(8, 9200), (Start: 13 @9227 has 66 MA's), (21, 9335), (28, 9365), (Start: 42 @9485 has 1 MA's), (51, 9518), (57, 9554), (61, 9572), (64, 9590), (67, 9599), (70, 9614), (71, 9617), (73, 9662), (83, 9740), (84, 9746), (91, 9812), (97, 9959), (104, 10160),

Gene: MilleniumForce_14 Start: 9223, Stop: 10159, Start Num: 13

Candidate Starts for MilleniumForce_14:

(8, 9196), (Start: 13 @9223 has 66 MA's), (21, 9331), (28, 9361), (Start: 42 @9481 has 1 MA's), (44, 9484), (45, 9487), (51, 9514), (57, 9550), (61, 9568), (64, 9586), (65, 9589), (67, 9595), (70, 9610), (71, 9613), (73, 9658), (83, 9736), (84, 9742), (91, 9808), (97, 9955), (104, 10156),

Gene: MinionDave_14 Start: 9227, Stop: 10163, Start Num: 13

Candidate Starts for MinionDave_14:

(8, 9200), (Start: 13 @9227 has 66 MA's), (21, 9335), (28, 9365), (Start: 42 @9485 has 1 MA's), (57, 9554), (61, 9572), (64, 9590), (67, 9599), (73, 9662), (83, 9740), (84, 9746), (91, 9812), (97, 9959), (104, 10160),

Gene: Miniwave_21 Start: 12667, Stop: 13538, Start Num: 12

Candidate Starts for Miniwave_21:

(Start: 7 @12595 has 17 MA's), (Start: 12 @12667 has 220 MA's), (30, 12811), (Start: 42 @12904 has 1 MA's), (48, 12928), (50, 12940), (53, 12964), (60, 12982), (63, 13006), (86, 13165), (96, 13318), (99, 13339), (100, 13384), (101, 13405), (102, 13420), (104, 13531),

Gene: Misfit_21 Start: 12560, Stop: 13431, Start Num: 12

Candidate Starts for Misfit_21:

(Start: 7 @12488 has 17 MA's), (Start: 12 @12560 has 220 MA's), (30, 12704), (Start: 42 @12797 has 1 MA's), (48, 12821), (50, 12833), (53, 12857), (60, 12875), (63, 12899), (86, 13058), (96, 13211), (99, 13232), (100, 13277), (101, 13298), (102, 13313), (104, 13424),

Gene: Misha28_14 Start: 8399, Stop: 9335, Start Num: 12

Candidate Starts for Misha28_14:

(Start: 12 @8399 has 220 MA's), (Start: 13 @8405 has 66 MA's), (21, 8507), (26, 8531), (28, 8537), (Start: 42 @8657 has 1 MA's), (51, 8690), (57, 8726), (61, 8744), (64, 8762), (65, 8765), (67, 8771), (70, 8786), (71, 8789), (73, 8834), (83, 8912), (91, 8984), (97, 9131), (104, 9332),

Gene: MisterCuddles_13 Start: 8542, Stop: 9478, Start Num: 12

Candidate Starts for MisterCuddles_13:

(Start: 4 @8449 has 6 MA's), (Start: 12 @8542 has 220 MA's), (Start: 13 @8548 has 66 MA's), (21, 8650), (28, 8680), (38, 8776), (Start: 42 @8800 has 1 MA's), (44, 8803), (45, 8806), (57, 8869), (61, 8887), (64, 8905), (65, 8908), (67, 8914), (73, 8977), (83, 9055), (84, 9061), (91, 9127), (104, 9475),

Gene: Modragons_13 Start: 8535, Stop: 9471, Start Num: 12

Candidate Starts for Modragons_13:

(Start: 4 @8442 has 6 MA's), (Start: 12 @8535 has 220 MA's), (Start: 13 @8541 has 66 MA's), (21, 8643), (28, 8673), (38, 8769), (Start: 42 @8793 has 1 MA's), (44, 8796), (45, 8799), (51, 8826), (57, 8862), (61, 8880), (64, 8898), (67, 8907), (73, 8970), (83, 9048), (91, 9120), (104, 9468),

Gene: Moldemort_22 Start: 12218, Stop: 13089, Start Num: 12

Candidate Starts for Moldemort_22:

(Start: 7 @12146 has 17 MA's), (Start: 12 @12218 has 220 MA's), (30, 12362), (Start: 42 @12455 has 1 MA's), (48, 12479), (50, 12491), (53, 12515), (60, 12533), (63, 12557), (86, 12716), (96, 12869), (99, 12890), (100, 12935), (101, 12956), (102, 12971), (104, 13082),

Gene: MooMoo_13 Start: 8071, Stop: 8992, Start Num: 11

Candidate Starts for MooMoo_13:

(Start: 4 @7981 has 6 MA's), (Start: 11 @8071 has 1 MA's), (17, 8158), (Start: 29 @8218 has 1 MA's), (32, 8233), (36, 8266), (41, 8326), (54, 8392), (55, 8395), (77, 8518), (79, 8530), (84, 8581), (85, 8584), (87, 8617), (90, 8647), (91, 8650), (92, 8680), (103, 8878),

Gene: Moonbeam_13 Start: 8539, Stop: 9475, Start Num: 12

Candidate Starts for Moonbeam_13:

(Start: 4 @8446 has 6 MA's), (Start: 12 @8539 has 220 MA's), (Start: 13 @8545 has 66 MA's), (21, 8647), (26, 8671), (28, 8677), (38, 8773), (Start: 42 @8797 has 1 MA's), (44, 8800), (45, 8803), (51, 8830), (57, 8866), (61, 8884), (64, 8902), (67, 8911), (73, 8974), (83, 9052), (84, 9058), (91, 9124), (97, 9271), (104, 9472),

Gene: Mori_52 Start: 25335, Stop: 26286, Start Num: 9

Candidate Starts for Mori_52:

(Start: 9 @25335 has 15 MA's), (Start: 10 @25347 has 3 MA's), (16, 25419), (22, 25464), (23, 25467), (28, 25491), (31, 25509), (35, 25539), (43, 25617), (44, 25620), (56, 25677), (61, 25701), (73, 25776), (84, 25860), (91, 25926), (93, 26022),

Gene: Mova_14 Start: 8392, Stop: 9328, Start Num: 12

Candidate Starts for Mova_14:

(Start: 4 @8299 has 6 MA's), (Start: 12 @8392 has 220 MA's), (Start: 13 @8398 has 66 MA's), (21, 8500), (28, 8530), (38, 8626), (Start: 42 @8650 has 1 MA's), (57, 8719), (61, 8737), (65, 8758), (67,

8764), (73, 8827), (83, 8905), (91, 8977), (104, 9325),

Gene: Mozy_13 Start: 8425, Stop: 9361, Start Num: 13

Candidate Starts for Mozy_13:

(8, 8398), (Start: 13 @8425 has 66 MA's), (21, 8533), (28, 8563), (37, 8638), (Start: 42 @8683 has 1 MA's), (44, 8686), (45, 8689), (51, 8716), (57, 8752), (64, 8788), (65, 8791), (67, 8797), (70, 8812), (71, 8815), (73, 8860), (83, 8938), (84, 8944), (91, 9010), (104, 9358),

Gene: Murai_53 Start: 25525, Stop: 26476, Start Num: 9

Candidate Starts for Murai_53:

(Start: 9 @25525 has 15 MA's), (Start: 10 @25537 has 3 MA's), (16, 25609), (22, 25654), (23, 25657), (28, 25681), (31, 25699), (35, 25729), (43, 25807), (44, 25810), (56, 25867), (61, 25891), (73, 25966), (84, 26050), (91, 26116), (93, 26212),

Gene: Murica_19 Start: 11935, Stop: 12809, Start Num: 12

Candidate Starts for Murica_19:

(Start: 7 @11863 has 17 MA's), (Start: 12 @11935 has 220 MA's), (30, 12079), (Start: 42 @12172 has 1 MA's), (48, 12196), (50, 12208), (53, 12232), (60, 12250), (63, 12274), (86, 12433), (96, 12586), (99, 12607), (100, 12652), (101, 12673), (102, 12688), (104, 12799),

Gene: Mutaforma13_13 Start: 8576, Stop: 9512, Start Num: 13

Candidate Starts for Mutaforma13_13:

(8, 8549), (Start: 13 @8576 has 66 MA's), (21, 8684), (26, 8708), (28, 8714), (Start: 42 @8834 has 1 MA's), (51, 8867), (57, 8903), (61, 8921), (64, 8939), (67, 8948), (70, 8963), (71, 8966), (73, 9011), (83, 9089), (84, 9095), (91, 9161), (104, 9509),

Gene: Myrale_21 Start: 12268, Stop: 13211, Start Num: 7

Candidate Starts for Myrale_21:

(Start: 7 @12268 has 17 MA's), (Start: 12 @12340 has 220 MA's), (30, 12484), (Start: 42 @12577 has 1 MA's), (48, 12601), (50, 12613), (53, 12637), (60, 12655), (63, 12679), (86, 12838), (96, 12991), (99, 13012), (100, 13057), (101, 13078), (102, 13093), (104, 13204),

Gene: NelitzaMV_21 Start: 12539, Stop: 13410, Start Num: 12

Candidate Starts for NelitzaMV_21:

(Start: 7 @12467 has 17 MA's), (Start: 12 @12539 has 220 MA's), (30, 12683), (Start: 42 @12776 has 1 MA's), (48, 12800), (50, 12812), (53, 12836), (60, 12854), (63, 12878), (86, 13037), (96, 13190), (99, 13211), (100, 13256), (101, 13277), (102, 13292), (104, 13403),

Gene: Nenae_15 Start: 9081, Stop: 9987, Start Num: 15

Candidate Starts for Nenae_15:

(Start: 15 @9081 has 41 MA's), (24, 9180), (25, 9189), (35, 9252), (38, 9300), (49, 9357), (61, 9420), (62, 9426), (64, 9438), (65, 9441), (80, 9528), (81, 9531), (89, 9633), (94, 9747), (98, 9804),

Gene: NiebruSaylor_52 Start: 25336, Stop: 26287, Start Num: 9

Candidate Starts for NiebruSaylor_52:

(Start: 9 @25336 has 15 MA's), (Start: 10 @25348 has 3 MA's), (16, 25420), (22, 25465), (23, 25468), (28, 25492), (31, 25510), (35, 25540), (43, 25618), (44, 25621), (56, 25678), (61, 25702), (73, 25777), (84, 25861), (91, 25927), (93, 26023),

Gene: Nimbo_13 Start: 8532, Stop: 9468, Start Num: 12

Candidate Starts for Nimbo_13:

(Start: 12 @8532 has 220 MA's), (Start: 13 @8538 has 66 MA's), (21, 8640), (28, 8670), (38, 8766), (Start: 42 @8790 has 1 MA's), (57, 8859), (61, 8877), (64, 8895), (65, 8898), (67, 8904), (70, 8919),

(71, 8922), (73, 8967), (83, 9045), (91, 9117), (104, 9465),

Gene: Nimrod_21 Start: 12643, Stop: 13586, Start Num: 7

Candidate Starts for Nimrod_21:

(Start: 7 @12643 has 17 MA's), (Start: 12 @12715 has 220 MA's), (30, 12859), (Start: 42 @12952 has 1 MA's), (48, 12976), (50, 12988), (53, 13012), (60, 13030), (63, 13054), (86, 13213), (96, 13366), (99, 13387), (100, 13432), (101, 13453), (102, 13468), (104, 13579),

Gene: Nitzel_14 Start: 9198, Stop: 10134, Start Num: 12

Candidate Starts for Nitzel_14:

(Start: 12 @9198 has 220 MA's), (Start: 13 @9204 has 66 MA's), (21, 9306), (28, 9336), (38, 9432), (Start: 42 @9456 has 1 MA's), (57, 9525), (61, 9543), (64, 9561), (65, 9564), (67, 9570), (70, 9585), (71, 9588), (73, 9633), (83, 9711), (91, 9783), (104, 10131),

Gene: Nivrat_13 Start: 8537, Stop: 9473, Start Num: 12

Candidate Starts for Nivrat_13:

(Start: 4 @8444 has 6 MA's), (Start: 12 @8537 has 220 MA's), (Start: 13 @8543 has 66 MA's), (21, 8645), (28, 8675), (38, 8771), (Start: 42 @8795 has 1 MA's), (44, 8798), (45, 8801), (57, 8864), (61, 8882), (64, 8900), (67, 8909), (73, 8972), (83, 9050), (91, 9122), (104, 9470),

Gene: NoSleep_22 Start: 12215, Stop: 13086, Start Num: 12

Candidate Starts for NoSleep_22:

(Start: 7 @12143 has 17 MA's), (Start: 12 @12215 has 220 MA's), (30, 12359), (Start: 42 @12452 has 1 MA's), (48, 12476), (50, 12488), (53, 12512), (60, 12530), (63, 12554), (86, 12713), (96, 12866), (99, 12887), (100, 12932), (101, 12953), (102, 12968), (104, 13079),

Gene: NormanBulbieJr_13 Start: 8523, Stop: 9459, Start Num: 12

Candidate Starts for NormanBulbieJr_13:

(2, 8358), (3, 8427), (Start: 12 @8523 has 220 MA's), (Start: 13 @8529 has 66 MA's), (21, 8631), (28, 8661), (38, 8757), (Start: 42 @8781 has 1 MA's), (61, 8868), (64, 8886), (67, 8895), (73, 8958), (83, 9036), (91, 9108), (104, 9456),

Gene: Ochi17_13 Start: 8535, Stop: 9471, Start Num: 12

Candidate Starts for Ochi17_13:

(Start: 4 @8442 has 6 MA's), (Start: 12 @8535 has 220 MA's), (Start: 13 @8541 has 66 MA's), (21, 8643), (28, 8673), (38, 8769), (Start: 42 @8793 has 1 MA's), (44, 8796), (45, 8799), (51, 8826), (57, 8862), (61, 8880), (64, 8898), (67, 8907), (73, 8970), (83, 9048), (91, 9120), (104, 9468),

Gene: OfUltron_13 Start: 8535, Stop: 9471, Start Num: 12

Candidate Starts for OfUltron_13:

(Start: 4 @8442 has 6 MA's), (Start: 12 @8535 has 220 MA's), (Start: 13 @8541 has 66 MA's), (21, 8643), (28, 8673), (38, 8769), (Start: 42 @8793 has 1 MA's), (44, 8796), (45, 8799), (51, 8826), (57, 8862), (61, 8880), (64, 8898), (67, 8907), (73, 8970), (83, 9048), (91, 9120), (104, 9468),

Gene: Ogotogo_16 Start: 8698, Stop: 9727, Start Num: 4

Candidate Starts for Ogotogo_16:

(Start: 4 @8698 has 6 MA's), (Start: 12 @8791 has 220 MA's), (Start: 13 @8797 has 66 MA's), (21, 8899), (28, 8929), (38, 9025), (Start: 42 @9049 has 1 MA's), (57, 9118), (61, 9136), (64, 9154), (67, 9163), (70, 9178), (71, 9181), (73, 9226), (83, 9304), (91, 9376), (104, 9724),

Gene: OldBen_13 Start: 8532, Stop: 9468, Start Num: 12

Candidate Starts for OldBen_13:

(Start: 12 @8532 has 220 MA's), (Start: 13 @8538 has 66 MA's), (21, 8640), (28, 8670), (38, 8766), (Start: 42 @8790 has 1 MA's), (57, 8859), (61, 8877), (64, 8895), (65, 8898), (67, 8904), (70, 8919), (71, 8922), (73, 8967), (83, 9045), (91, 9117), (104, 9465),

Gene: OlympiaSaint_13 Start: 8556, Stop: 9492, Start Num: 13

Candidate Starts for OlympiaSaint_13:

(8, 8529), (Start: 13 @8556 has 66 MA's), (21, 8664), (28, 8694), (Start: 42 @8814 has 1 MA's), (51, 8847), (57, 8883), (61, 8901), (64, 8919), (67, 8928), (70, 8943), (71, 8946), (73, 8991), (83, 9069), (91, 9141), (104, 9489),

Gene: OrionPax_22 Start: 12218, Stop: 13089, Start Num: 12

Candidate Starts for OrionPax_22:

(Start: 7 @12146 has 17 MA's), (Start: 12 @12218 has 220 MA's), (30, 12362), (Start: 42 @12455 has 1 MA's), (48, 12479), (50, 12491), (53, 12515), (60, 12533), (63, 12557), (86, 12716), (96, 12869), (99, 12890), (100, 12935), (101, 12956), (102, 12971), (104, 13082),

Gene: Ovechkin_13 Start: 8577, Stop: 9513, Start Num: 13

Candidate Starts for Ovechkin_13:

(8, 8550), (Start: 13 @8577 has 66 MA's), (21, 8685), (28, 8715), (Start: 42 @8835 has 1 MA's), (51, 8868), (57, 8904), (61, 8922), (64, 8940), (65, 8943), (67, 8949), (70, 8964), (71, 8967), (73, 9012), (83, 9090), (84, 9096), (91, 9162), (97, 9309), (104, 9510),

Gene: OwlsT2W_14 Start: 8398, Stop: 9334, Start Num: 12

Candidate Starts for OwlsT2W_14:

(Start: 12 @8398 has 220 MA's), (Start: 13 @8404 has 66 MA's), (21, 8506), (28, 8536), (38, 8632), (Start: 42 @8656 has 1 MA's), (57, 8725), (61, 8743), (64, 8761), (65, 8764), (67, 8770), (70, 8785), (71, 8788), (73, 8833), (83, 8911), (91, 8983), (104, 9331),

Gene: PHappiness_13 Start: 8768, Stop: 9446, Start Num: 42

Candidate Starts for PHappiness_13:

(Start: 42 @8768 has 1 MA's), (57, 8837), (61, 8855), (64, 8873), (65, 8876), (67, 8882), (70, 8897), (71, 8900), (73, 8945), (83, 9023), (91, 9095), (104, 9443),

Gene: Pacc40_13 Start: 8532, Stop: 9468, Start Num: 12

Candidate Starts for Pacc40_13:

(Start: 12 @8532 has 220 MA's), (Start: 13 @8538 has 66 MA's), (21, 8640), (28, 8670), (38, 8766), (Start: 42 @8790 has 1 MA's), (57, 8859), (61, 8877), (64, 8895), (65, 8898), (67, 8904), (70, 8919), (71, 8922), (73, 8967), (83, 9045), (91, 9117), (104, 9465),

Gene: Panchino_15 Start: 9057, Stop: 9963, Start Num: 15

Candidate Starts for Panchino_15:

(Start: 15 @9057 has 41 MA's), (25, 9165), (35, 9228), (38, 9276), (49, 9333), (61, 9396), (62, 9402), (64, 9414), (65, 9417), (80, 9504), (81, 9507), (89, 9609), (94, 9723), (98, 9780),

Gene: Paperbeatsrock_23 Start: 13450, Stop: 14321, Start Num: 12

Candidate Starts for Paperbeatsrock_23:

(Start: 7 @13378 has 17 MA's), (Start: 12 @13450 has 220 MA's), (30, 13594), (Start: 42 @13687 has 1 MA's), (48, 13711), (50, 13723), (53, 13747), (60, 13765), (63, 13789), (86, 13948), (96, 14101), (99, 14122), (100, 14167), (101, 14188), (102, 14203), (104, 14314),

Gene: Parmesanjohn_15 Start: 9036, Stop: 9942, Start Num: 15

Candidate Starts for Parmesanjohn_15:

(Start: 15 @9036 has 41 MA's), (25, 9144), (35, 9207), (49, 9312), (61, 9375), (62, 9381), (64, 9393), (65, 9396), (81, 9486), (89, 9588), (94, 9702), (98, 9759),

Gene: Phaja_20 Start: 12057, Stop: 13003, Start Num: 7

Candidate Starts for Phaja_20:

(Start: 7 @12057 has 17 MA's), (Start: 12 @12129 has 220 MA's), (30, 12273), (Start: 42 @12366 has 1 MA's), (48, 12390), (50, 12402), (53, 12426), (60, 12444), (63, 12468), (86, 12627), (96, 12780), (99, 12801), (100, 12846), (101, 12867), (102, 12882), (104, 12993),

Gene: Phalconet_13 Start: 8579, Stop: 9515, Start Num: 13

Candidate Starts for Phalconet_13:

(8, 8552), (Start: 13 @8579 has 66 MA's), (21, 8687), (28, 8717), (Start: 42 @8837 has 1 MA's), (51, 8870), (57, 8906), (61, 8924), (64, 8942), (67, 8951), (70, 8966), (71, 8969), (73, 9014), (83, 9092), (84, 9098), (91, 9164), (97, 9311), (104, 9512),

Gene: PhancyPhin_15 Start: 9081, Stop: 9987, Start Num: 15

Candidate Starts for PhancyPhin_15:

(Start: 15 @9081 has 41 MA's), (24, 9180), (25, 9189), (35, 9252), (38, 9300), (49, 9357), (61, 9420), (62, 9426), (64, 9438), (65, 9441), (80, 9528), (81, 9531), (89, 9633), (94, 9747), (98, 9804),

Gene: Phanphagia_13 Start: 8578, Stop: 9514, Start Num: 13

Candidate Starts for Phanphagia_13:

(8, 8551), (Start: 13 @8578 has 66 MA's), (21, 8686), (28, 8716), (Start: 42 @8836 has 1 MA's), (44, 8839), (45, 8842), (51, 8869), (57, 8905), (61, 8923), (64, 8941), (67, 8950), (70, 8965), (71, 8968), (73, 9013), (83, 9091), (84, 9097), (91, 9163), (97, 9310), (104, 9511),

Gene: Pharsalus_22 Start: 13178, Stop: 14121, Start Num: 7

Candidate Starts for Pharsalus_22:

(Start: 7 @13178 has 17 MA's), (Start: 12 @13250 has 220 MA's), (30, 13394), (Start: 42 @13487 has 1 MA's), (48, 13511), (50, 13523), (53, 13547), (60, 13565), (63, 13589), (86, 13748), (96, 13901), (99, 13922), (100, 13967), (101, 13988), (102, 14003), (104, 14114),

Gene: Phasih_13 Start: 8571, Stop: 9507, Start Num: 13

Candidate Starts for Phasih_13:

(8, 8544), (Start: 13 @8571 has 66 MA's), (21, 8679), (28, 8709), (Start: 42 @8829 has 1 MA's), (51, 8862), (57, 8898), (61, 8916), (64, 8934), (67, 8943), (70, 8958), (71, 8961), (73, 9006), (83, 9084), (84, 9090), (91, 9156), (97, 9303), (104, 9504),

Gene: Phatniss_13 Start: 8532, Stop: 9468, Start Num: 12

Candidate Starts for Phatniss_13:

(Start: 12 @8532 has 220 MA's), (Start: 13 @8538 has 66 MA's), (21, 8640), (28, 8670), (38, 8766), (Start: 42 @8790 has 1 MA's), (57, 8859), (61, 8877), (64, 8895), (65, 8898), (67, 8904), (70, 8919), (71, 8922), (73, 8967), (83, 9045), (91, 9117), (104, 9465),

Gene: PhesterPhotato_13 Start: 8578, Stop: 9514, Start Num: 13

Candidate Starts for PhesterPhotato_13:

(8, 8551), (Start: 13 @8578 has 66 MA's), (21, 8686), (28, 8716), (Start: 42 @8836 has 1 MA's), (51, 8869), (57, 8905), (64, 8941), (67, 8950), (70, 8965), (71, 8968), (73, 9013), (83, 9091), (84, 9097), (91, 9163), (97, 9310), (104, 9511),

Gene: Philonius_15 Start: 9036, Stop: 9942, Start Num: 15

Candidate Starts for Philonius_15:

(Start: 15 @9036 has 41 MA's), (25, 9144), (35, 9207), (38, 9255), (49, 9312), (61, 9375), (62, 9381), (64, 9393), (65, 9396), (81, 9486), (89, 9588), (94, 9702), (98, 9759),

Gene: Philus_13 Start: 8537, Stop: 9473, Start Num: 12

Candidate Starts for Philus_13:

(Start: 4 @8444 has 6 MA's), (Start: 12 @8537 has 220 MA's), (Start: 13 @8543 has 66 MA's), (21, 8645), (28, 8675), (38, 8771), (Start: 42 @8795 has 1 MA's), (44, 8798), (45, 8801), (57, 8864), (61, 8882), (64, 8900), (67, 8909), (73, 8972), (83, 9050), (91, 9122), (104, 9470),

Gene: Phloss_15 Start: 9036, Stop: 9942, Start Num: 15

Candidate Starts for Phloss_15:

(Start: 15 @9036 has 41 MA's), (25, 9144), (35, 9207), (49, 9312), (61, 9375), (62, 9381), (64, 9393), (65, 9396), (81, 9486), (89, 9588), (94, 9702), (98, 9759),

Gene: Phrann_15 Start: 9081, Stop: 9987, Start Num: 15

Candidate Starts for Phrann_15:

(Start: 15 @9081 has 41 MA's), (24, 9180), (25, 9189), (35, 9252), (38, 9300), (49, 9357), (61, 9420), (62, 9426), (64, 9438), (65, 9441), (80, 9528), (81, 9531), (94, 9747), (98, 9804),

Gene: Piper2020_14 Start: 8399, Stop: 9335, Start Num: 12

Candidate Starts for Piper2020_14:

(Start: 12 @8399 has 220 MA's), (Start: 13 @8405 has 66 MA's), (21, 8507), (28, 8537), (38, 8633), (Start: 42 @8657 has 1 MA's), (57, 8726), (61, 8744), (64, 8762), (65, 8765), (67, 8771), (70, 8786), (71, 8789), (73, 8834), (83, 8912), (91, 8984), (97, 9131), (104, 9332),

Gene: Pippy_12 Start: 8520, Stop: 9456, Start Num: 12

Candidate Starts for Pippy_12:

(Start: 12 @8520 has 220 MA's), (Start: 13 @8526 has 66 MA's), (21, 8628), (28, 8658), (38, 8754), (Start: 42 @8778 has 1 MA's), (57, 8847), (61, 8865), (64, 8883), (65, 8886), (67, 8892), (70, 8907), (71, 8910), (73, 8955), (83, 9033), (91, 9105), (104, 9453),

Gene: Pipsqueaks_15 Start: 9036, Stop: 9942, Start Num: 15

Candidate Starts for Pipsqueaks_15:

(Start: 15 @9036 has 41 MA's), (25, 9144), (35, 9207), (49, 9312), (61, 9375), (62, 9381), (64, 9393), (65, 9396), (81, 9486), (89, 9588), (94, 9702), (98, 9759),

Gene: Plumbus_14 Start: 8391, Stop: 9327, Start Num: 12

Candidate Starts for Plumbus_14:

(Start: 4 @8298 has 6 MA's), (Start: 12 @8391 has 220 MA's), (Start: 13 @8397 has 66 MA's), (21, 8499), (26, 8523), (28, 8529), (38, 8625), (Start: 42 @8649 has 1 MA's), (44, 8652), (45, 8655), (57, 8718), (61, 8736), (64, 8754), (67, 8763), (70, 8778), (71, 8781), (73, 8826), (83, 8904), (91, 8976), (104, 9324),

Gene: Poenanya_13 Start: 8532, Stop: 9468, Start Num: 12

Candidate Starts for Poenanya_13:

(Start: 12 @8532 has 220 MA's), (Start: 13 @8538 has 66 MA's), (21, 8640), (26, 8664), (28, 8670), (38, 8766), (Start: 42 @8790 has 1 MA's), (51, 8823), (61, 8877), (64, 8895), (67, 8904), (73, 8967), (83, 9045), (91, 9117), (104, 9465),

Gene: Polka14_13 Start: 8533, Stop: 9469, Start Num: 12

Candidate Starts for Polka14_13:

(Start: 12 @8533 has 220 MA's), (Start: 13 @8539 has 66 MA's), (21, 8641), (26, 8665), (28, 8671), (38, 8767), (Start: 42 @8791 has 1 MA's), (51, 8824), (57, 8860), (61, 8878), (64, 8896), (67, 8905),

(73, 8968), (83, 9046), (91, 9118), (104, 9466),

Gene: Pollywog_14 Start: 8385, Stop: 9321, Start Num: 12

Candidate Starts for Pollywog_14:

(Start: 12 @8385 has 220 MA's), (Start: 13 @8391 has 66 MA's), (21, 8493), (28, 8523), (38, 8619), (Start: 42 @8643 has 1 MA's), (57, 8712), (61, 8730), (64, 8748), (65, 8751), (67, 8757), (70, 8772), (71, 8775), (73, 8820), (83, 8898), (91, 8970), (104, 9318),

Gene: PopTart_13 Start: 8577, Stop: 9513, Start Num: 13

Candidate Starts for PopTart_13:

(8, 8550), (Start: 13 @8577 has 66 MA's), (21, 8685), (28, 8715), (Start: 42 @8835 has 1 MA's), (51, 8868), (57, 8904), (61, 8922), (64, 8940), (65, 8943), (67, 8949), (70, 8964), (71, 8967), (73, 9012), (83, 9090), (84, 9096), (91, 9162), (97, 9309), (104, 9510),

Gene: Priscilla_13 Start: 8538, Stop: 9474, Start Num: 12

Candidate Starts for Priscilla_13:

(Start: 4 @8445 has 6 MA's), (Start: 12 @8538 has 220 MA's), (Start: 13 @8544 has 66 MA's), (21, 8646), (28, 8676), (38, 8772), (Start: 42 @8796 has 1 MA's), (44, 8799), (45, 8802), (57, 8865), (61, 8883), (64, 8901), (67, 8910), (73, 8973), (83, 9051), (91, 9123), (104, 9471),

Gene: Quallification_22 Start: 12676, Stop: 13547, Start Num: 12

Candidate Starts for Quallification_22:

(Start: 7 @12604 has 17 MA's), (Start: 12 @12676 has 220 MA's), (30, 12820), (Start: 42 @12913 has 1 MA's), (48, 12937), (50, 12949), (53, 12973), (60, 12991), (63, 13015), (86, 13174), (96, 13327), (99, 13348), (100, 13393), (101, 13414), (102, 13429), (104, 13540),

Gene: QueenHazel_15 Start: 9782, Stop: 10775, Start Num: 12

Candidate Starts for QueenHazel_15:

(6, 9695), (Start: 12 @9782 has 220 MA's), (17, 9866), (30, 9929), (32, 9941), (33, 9947), (41, 10034), (52, 10085), (55, 10103), (69, 10169), (72, 10193), (76, 10223), (77, 10226), (84, 10289), (85, 10292), (90, 10355), (91, 10358), (105, 10772),

Gene: QuickMath_13 Start: 8578, Stop: 9514, Start Num: 13

Candidate Starts for QuickMath_13:

(8, 8551), (Start: 13 @8578 has 66 MA's), (21, 8686), (28, 8716), (Start: 42 @8836 has 1 MA's), (51, 8869), (57, 8905), (61, 8923), (64, 8941), (65, 8944), (67, 8950), (70, 8965), (71, 8968), (73, 9013), (83, 9091), (84, 9097), (91, 9163), (97, 9310), (104, 9511),

Gene: Quico_14 Start: 8403, Stop: 9339, Start Num: 13

Candidate Starts for Quico_14:

(8, 8376), (Start: 13 @8403 has 66 MA's), (21, 8511), (28, 8541), (Start: 42 @8661 has 1 MA's), (44, 8664), (45, 8667), (51, 8694), (57, 8730), (64, 8766), (65, 8769), (67, 8775), (70, 8790), (71, 8793), (73, 8838), (83, 8916), (84, 8922), (91, 8988), (97, 9135), (104, 9336),

Gene: Radiance_13 Start: 8531, Stop: 9467, Start Num: 12

Candidate Starts for Radiance_13:

(Start: 12 @8531 has 220 MA's), (Start: 13 @8537 has 66 MA's), (21, 8639), (28, 8669), (38, 8765), (Start: 42 @8789 has 1 MA's), (57, 8858), (61, 8876), (64, 8894), (65, 8897), (67, 8903), (70, 8918), (71, 8921), (73, 8966), (83, 9044), (91, 9116), (104, 9464),

Gene: Ramsey_14 Start: 8388, Stop: 9324, Start Num: 12

Candidate Starts for Ramsey_14:

(Start: 4 @8295 has 6 MA's), (Start: 12 @8388 has 220 MA's), (Start: 13 @8394 has 66 MA's), (21, 8496), (26, 8520), (28, 8526), (38, 8622), (Start: 42 @8646 has 1 MA's), (44, 8649), (45, 8652), (51, 8679), (57, 8715), (61, 8733), (64, 8751), (67, 8760), (73, 8823), (83, 8901), (91, 8973), (104, 9321),

Gene: Raymond7_15 Start: 9081, Stop: 9987, Start Num: 15

Candidate Starts for Raymond7_15:

(Start: 15 @9081 has 41 MA's), (24, 9180), (25, 9189), (35, 9252), (38, 9300), (49, 9357), (61, 9420), (62, 9426), (64, 9438), (65, 9441), (80, 9528), (81, 9531), (89, 9633), (94, 9747), (98, 9804),

Gene: Rebel_15 Start: 9081, Stop: 9987, Start Num: 15

Candidate Starts for Rebel_15:

(Start: 15 @9081 has 41 MA's), (24, 9180), (25, 9189), (35, 9252), (38, 9300), (49, 9357), (61, 9420), (62, 9426), (64, 9438), (65, 9441), (80, 9528), (81, 9531), (89, 9633), (94, 9747), (98, 9804),

Gene: Redi_15 Start: 9081, Stop: 9987, Start Num: 15

Candidate Starts for Redi_15:

(Start: 15 @9081 has 41 MA's), (24, 9180), (25, 9189), (35, 9252), (38, 9300), (49, 9357), (61, 9420), (62, 9426), (64, 9438), (65, 9441), (80, 9528), (81, 9531), (89, 9633), (94, 9747), (98, 9804),

Gene: Renaud18_14 Start: 8852, Stop: 9794, Start Num: 12

Candidate Starts for Renaud18_14:

(Start: 12 @8852 has 220 MA's), (16, 8924), (22, 8969), (28, 8996), (31, 9014), (34, 9032), (58, 9200), (71, 9263), (73, 9308), (80, 9341), (84, 9392), (91, 9458),

Gene: Rialto_14 Start: 8391, Stop: 9327, Start Num: 12

Candidate Starts for Rialto_14:

(Start: 4 @8298 has 6 MA's), (Start: 12 @8391 has 220 MA's), (Start: 13 @8397 has 66 MA's), (21, 8499), (26, 8523), (28, 8529), (38, 8625), (Start: 42 @8649 has 1 MA's), (44, 8652), (45, 8655), (51, 8682), (57, 8718), (61, 8736), (64, 8754), (67, 8763), (73, 8826), (83, 8904), (84, 8910), (91, 8976), (97, 9123), (104, 9324),

Gene: Rimmer_20 Start: 12036, Stop: 12907, Start Num: 12

Candidate Starts for Rimmer_20:

(Start: 7 @11964 has 17 MA's), (Start: 12 @12036 has 220 MA's), (30, 12180), (Start: 42 @12273 has 1 MA's), (48, 12297), (50, 12309), (53, 12333), (60, 12351), (63, 12375), (86, 12534), (96, 12687), (99, 12708), (100, 12753), (101, 12774), (102, 12789), (104, 12900),

Gene: Rita_13 Start: 8546, Stop: 9482, Start Num: 13

Candidate Starts for Rita_13:

(8, 8519), (Start: 13 @8546 has 66 MA's), (21, 8654), (26, 8678), (28, 8684), (Start: 42 @8804 has 1 MA's), (51, 8837), (57, 8873), (61, 8891), (64, 8909), (67, 8918), (70, 8933), (71, 8936), (73, 8981), (83, 9059), (84, 9065), (91, 9131), (97, 9278), (104, 9479),

Gene: RitaG_13 Start: 8532, Stop: 9441, Start Num: 12

Candidate Starts for RitaG_13:

(Start: 12 @8532 has 220 MA's), (Start: 13 @8538 has 66 MA's), (21, 8640), (28, 8670), (Start: 42 @8763 has 1 MA's), (57, 8832), (61, 8850), (64, 8868), (65, 8871), (67, 8877), (70, 8892), (71, 8895), (73, 8940), (83, 9018), (91, 9090), (104, 9438),

Gene: Rockne_13 Start: 8549, Stop: 9485, Start Num: 12

Candidate Starts for Rockne_13:

(Start: 12 @8549 has 220 MA's), (Start: 13 @8555 has 66 MA's), (21, 8657), (28, 8687), (38, 8783), (Start: 42 @8807 has 1 MA's), (57, 8876), (61, 8894), (64, 8912), (65, 8915), (67, 8921), (70, 8936),

(71, 8939), (73, 8984), (83, 9062), (91, 9134), (104, 9482),

Gene: RockyHorror_14 Start: 8389, Stop: 9325, Start Num: 12

Candidate Starts for RockyHorror_14:

(Start: 4 @8296 has 6 MA's), (Start: 12 @8389 has 220 MA's), (Start: 13 @8395 has 66 MA's), (21, 8497), (26, 8521), (28, 8527), (38, 8623), (Start: 42 @8647 has 1 MA's), (44, 8650), (45, 8653), (51, 8680), (57, 8716), (61, 8734), (64, 8752), (67, 8761), (73, 8824), (83, 8902), (91, 8974), (104, 9322),

Gene: Royals2015_13 Start: 8576, Stop: 9512, Start Num: 13

Candidate Starts for Royals2015_13:

(8, 8549), (Start: 13 @8576 has 66 MA's), (21, 8684), (28, 8714), (Start: 42 @8834 has 1 MA's), (51, 8867), (57, 8903), (61, 8921), (64, 8939), (65, 8942), (67, 8948), (70, 8963), (71, 8966), (73, 9011), (83, 9089), (84, 9095), (91, 9161), (97, 9308), (104, 9509),

Gene: Rubeelu_15 Start: 9056, Stop: 9962, Start Num: 15

Candidate Starts for Rubeelu_15:

(Start: 15 @9056 has 41 MA's), (25, 9164), (35, 9227), (38, 9275), (49, 9332), (61, 9395), (62, 9401), (65, 9416), (81, 9506), (84, 9554), (94, 9722), (98, 9779),

Gene: Ruby_13 Start: 8449, Stop: 9478, Start Num: 4

Candidate Starts for Ruby_13:

(Start: 4 @8449 has 6 MA's), (Start: 12 @8542 has 220 MA's), (Start: 13 @8548 has 66 MA's), (21, 8650), (28, 8680), (38, 8776), (Start: 42 @8800 has 1 MA's), (44, 8803), (45, 8806), (57, 8869), (61, 8887), (64, 8905), (65, 8908), (67, 8914), (73, 8977), (83, 9055), (84, 9061), (91, 9127), (104, 9475),

Gene: Ryadel_57 Start: 26800, Stop: 27751, Start Num: 9

Candidate Starts for Ryadel_57:

(Start: 9 @26800 has 15 MA's), (Start: 10 @26812 has 3 MA's), (16, 26884), (22, 26929), (23, 26932), (28, 26956), (31, 26974), (35, 27004), (43, 27082), (44, 27085), (56, 27142), (61, 27166), (73, 27241), (91, 27391), (93, 27487),

Gene: SG4_13 Start: 8576, Stop: 9512, Start Num: 13

Candidate Starts for SG4_13:

(8, 8549), (Start: 13 @8576 has 66 MA's), (21, 8684), (28, 8714), (Start: 42 @8834 has 1 MA's), (51, 8867), (57, 8903), (61, 8921), (64, 8939), (65, 8942), (67, 8948), (70, 8963), (71, 8966), (73, 9011), (83, 9089), (84, 9095), (91, 9161), (97, 9308), (104, 9509),

Gene: Saal_13 Start: 8521, Stop: 9457, Start Num: 12

Candidate Starts for Saal_13:

(Start: 12 @8521 has 220 MA's), (Start: 13 @8527 has 66 MA's), (21, 8629), (28, 8659), (38, 8755), (Start: 42 @8779 has 1 MA's), (57, 8848), (61, 8866), (64, 8884), (65, 8887), (67, 8893), (70, 8908), (71, 8911), (73, 8956), (83, 9034), (91, 9106), (104, 9454),

Gene: Sabbb_13 Start: 8550, Stop: 9486, Start Num: 12

Candidate Starts for Sabbb_13:

(Start: 12 @8550 has 220 MA's), (Start: 13 @8556 has 66 MA's), (21, 8658), (26, 8682), (28, 8688), (38, 8784), (Start: 42 @8808 has 1 MA's), (51, 8841), (61, 8895), (64, 8913), (67, 8922), (73, 8985), (83, 9063), (91, 9135), (104, 9483),

Gene: Saints25_22 Start: 12137, Stop: 13008, Start Num: 12

Candidate Starts for Saints25_22:

(Start: 7 @12065 has 17 MA's), (Start: 12 @12137 has 220 MA's), (30, 12281), (Start: 42 @12374 has 1 MA's), (48, 12398), (50, 12410), (53, 12434), (60, 12452), (63, 12476), (86, 12635), (96, 12788), (99,

12809), (100, 12854), (101, 12875), (102, 12890), (104, 13001),

Gene: Sandalphon_13 Start: 8549, Stop: 9485, Start Num: 12

Candidate Starts for Sandalphon_13:

(Start: 12 @8549 has 220 MA's), (Start: 13 @8555 has 66 MA's), (21, 8657), (26, 8681), (28, 8687), (38, 8783), (Start: 42 @8807 has 1 MA's), (44, 8810), (45, 8813), (61, 8894), (65, 8915), (67, 8921), (73, 8984), (83, 9062), (91, 9134), (104, 9482),

Gene: Sarma624_14 Start: 8383, Stop: 9319, Start Num: 12

Candidate Starts for Sarma624_14:

(Start: 12 @8383 has 220 MA's), (Start: 13 @8389 has 66 MA's), (21, 8491), (28, 8521), (38, 8617), (Start: 42 @8641 has 1 MA's), (57, 8710), (61, 8728), (64, 8746), (65, 8749), (67, 8755), (70, 8770), (71, 8773), (73, 8818), (83, 8896), (91, 8968), (104, 9316),

Gene: Sassafras_13 Start: 8532, Stop: 9468, Start Num: 12

Candidate Starts for Sassafras_13:

(Start: 12 @8532 has 220 MA's), (Start: 13 @8538 has 66 MA's), (21, 8640), (28, 8670), (38, 8766), (Start: 42 @8790 has 1 MA's), (57, 8859), (61, 8877), (64, 8895), (65, 8898), (67, 8904), (70, 8919), (71, 8922), (73, 8967), (83, 9045), (91, 9117), (104, 9465),

Gene: Sassay_20 Start: 11977, Stop: 12848, Start Num: 12

Candidate Starts for Sassay_20:

(Start: 7 @11905 has 17 MA's), (Start: 12 @11977 has 220 MA's), (30, 12121), (Start: 42 @12214 has 1 MA's), (48, 12238), (50, 12250), (53, 12274), (60, 12292), (63, 12316), (86, 12475), (96, 12628), (99, 12649), (100, 12694), (101, 12715), (102, 12730), (104, 12841),

Gene: SassyB_13 Start: 8577, Stop: 9513, Start Num: 13

Candidate Starts for SassyB_13:

(8, 8550), (Start: 13 @8577 has 66 MA's), (21, 8685), (28, 8715), (Start: 42 @8835 has 1 MA's), (51, 8868), (57, 8904), (61, 8922), (64, 8940), (65, 8943), (67, 8949), (70, 8964), (71, 8967), (73, 9012), (83, 9090), (84, 9096), (91, 9162), (97, 9309), (104, 9510),

Gene: Sbash_14 Start: 9346, Stop: 10261, Start Num: 12

Candidate Starts for Sbash_14:

(Start: 12 @9346 has 220 MA's), (17, 9430), (30, 9493), (32, 9505), (36, 9538), (41, 9598), (55, 9667), (59, 9679), (60, 9682), (66, 9718), (68, 9727), (76, 9787), (77, 9790), (84, 9853), (85, 9856), (88, 9898), (90, 9919), (91, 9922),

Gene: Schnauzer_15 Start: 9036, Stop: 9942, Start Num: 15

Candidate Starts for Schnauzer_15:

(Start: 15 @9036 has 41 MA's), (25, 9144), (35, 9207), (49, 9312), (61, 9375), (62, 9381), (64, 9393), (65, 9396), (81, 9486), (89, 9588), (94, 9702), (98, 9759),

Gene: SchoolBus_53 Start: 25762, Stop: 26701, Start Num: 10

Candidate Starts for SchoolBus_53:

(Start: 9 @25750 has 15 MA's), (Start: 10 @25762 has 3 MA's), (16, 25834), (22, 25879), (23, 25882), (28, 25906), (31, 25924), (35, 25954), (43, 26032), (44, 26035), (56, 26092), (61, 26116), (73, 26191), (84, 26275), (91, 26341), (93, 26437),

Gene: Scottish_13 Start: 8538, Stop: 9468, Start Num: 13

Candidate Starts for Scottish_13:

(Start: 12 @8532 has 220 MA's), (Start: 13 @8538 has 66 MA's), (21, 8640), (28, 8670), (38, 8766), (Start: 42 @8790 has 1 MA's), (57, 8859), (61, 8877), (64, 8895), (65, 8898), (67, 8904), (70, 8919),

(71, 8922), (73, 8967), (83, 9045), (91, 9117), (104, 9465),

Gene: Seabastian_13 Start: 8535, Stop: 9471, Start Num: 12

Candidate Starts for Seabastian_13:

(Start: 4 @8442 has 6 MA's), (Start: 12 @8535 has 220 MA's), (Start: 13 @8541 has 66 MA's), (21, 8643), (28, 8673), (38, 8769), (Start: 42 @8793 has 1 MA's), (44, 8796), (45, 8799), (51, 8826), (57, 8862), (61, 8880), (64, 8898), (67, 8907), (73, 8970), (83, 9048), (91, 9120), (104, 9468),

Gene: Seagreen_14 Start: 8392, Stop: 9328, Start Num: 12

Candidate Starts for Seagreen_14:

(Start: 12 @8392 has 220 MA's), (Start: 13 @8398 has 66 MA's), (21, 8500), (26, 8524), (28, 8530), (38, 8626), (Start: 42 @8650 has 1 MA's), (51, 8683), (61, 8737), (64, 8755), (67, 8764), (73, 8827), (83, 8905), (91, 8977), (104, 9325),

Gene: ShamWow_21 Start: 12470, Stop: 13341, Start Num: 12

Candidate Starts for ShamWow_21:

(Start: 7 @12398 has 17 MA's), (Start: 12 @12470 has 220 MA's), (30, 12614), (Start: 42 @12707 has 1 MA's), (48, 12731), (50, 12743), (53, 12767), (60, 12785), (63, 12809), (86, 12968), (96, 13121), (99, 13142), (100, 13187), (101, 13208), (102, 13223), (104, 13334),

Gene: Shauna1_12 Start: 8578, Stop: 9514, Start Num: 13

Candidate Starts for Shauna1_12:

(8, 8551), (Start: 13 @8578 has 66 MA's), (21, 8686), (28, 8716), (Start: 42 @8836 has 1 MA's), (44, 8839), (45, 8842), (51, 8869), (57, 8905), (61, 8923), (64, 8941), (67, 8950), (70, 8965), (71, 8968), (73, 9013), (83, 9091), (84, 9097), (91, 9163), (97, 9310), (104, 9511),

Gene: ShereKhan_23 Start: 13456, Stop: 14327, Start Num: 12

Candidate Starts for ShereKhan_23:

(Start: 7 @13384 has 17 MA's), (Start: 12 @13456 has 220 MA's), (30, 13600), (Start: 42 @13693 has 1 MA's), (48, 13717), (50, 13729), (53, 13753), (60, 13771), (63, 13795), (86, 13954), (96, 14107), (99, 14128), (100, 14173), (101, 14194), (102, 14209), (104, 14320),

Gene: ShiLan_13 Start: 8444, Stop: 9473, Start Num: 4

Candidate Starts for ShiLan_13:

(Start: 4 @8444 has 6 MA's), (Start: 12 @8537 has 220 MA's), (Start: 13 @8543 has 66 MA's), (21, 8645), (28, 8675), (38, 8771), (Start: 42 @8795 has 1 MA's), (44, 8798), (45, 8801), (57, 8864), (61, 8882), (64, 8900), (67, 8909), (73, 8972), (83, 9050), (91, 9122), (104, 9470),

Gene: Shida_53 Start: 25590, Stop: 26541, Start Num: 9

Candidate Starts for Shida_53:

(Start: 9 @25590 has 15 MA's), (Start: 10 @25602 has 3 MA's), (16, 25674), (22, 25719), (23, 25722), (28, 25746), (31, 25764), (35, 25794), (43, 25872), (44, 25875), (56, 25932), (61, 25956), (73, 26031), (84, 26115), (91, 26181), (93, 26277),

Gene: ShowerHandel_13 Start: 8538, Stop: 9474, Start Num: 12

Candidate Starts for ShowerHandel_13:

(Start: 4 @8445 has 6 MA's), (Start: 12 @8538 has 220 MA's), (Start: 13 @8544 has 66 MA's), (21, 8646), (28, 8676), (38, 8772), (Start: 42 @8796 has 1 MA's), (44, 8799), (45, 8802), (57, 8865), (61, 8883), (64, 8901), (67, 8910), (73, 8973), (83, 9051), (91, 9123), (104, 9471),

Gene: ShrimpFriedEgg_15 Start: 9081, Stop: 9987, Start Num: 15

Candidate Starts for ShrimpFriedEgg_15:

(Start: 15 @9081 has 41 MA's), (24, 9180), (25, 9189), (35, 9252), (38, 9300), (49, 9357), (61, 9420), (62, 9426), (64, 9438), (65, 9441), (80, 9528), (81, 9531), (89, 9633), (94, 9747), (98, 9804),

Gene: ShroomBoi_13 Start: 8579, Stop: 9515, Start Num: 13

Candidate Starts for ShroomBoi_13:

(8, 8552), (Start: 13 @8579 has 66 MA's), (21, 8687), (28, 8717), (Start: 42 @8837 has 1 MA's), (51, 8870), (57, 8906), (61, 8924), (64, 8942), (67, 8951), (70, 8966), (71, 8969), (73, 9014), (83, 9092), (84, 9098), (91, 9164), (97, 9311), (104, 9512),

Gene: Shweta_15 Start: 9081, Stop: 9987, Start Num: 15

Candidate Starts for Shweta_15:

(Start: 15 @9081 has 41 MA's), (24, 9180), (25, 9189), (35, 9252), (38, 9300), (49, 9357), (61, 9420), (62, 9426), (64, 9438), (65, 9441), (80, 9528), (81, 9531), (89, 9633), (94, 9747), (98, 9804),

Gene: SiSi_13 Start: 8565, Stop: 9501, Start Num: 13

Candidate Starts for SiSi_13:

(8, 8538), (Start: 13 @8565 has 66 MA's), (21, 8673), (28, 8703), (Start: 42 @8823 has 1 MA's), (44, 8826), (45, 8829), (51, 8856), (57, 8892), (61, 8910), (64, 8928), (65, 8931), (67, 8937), (70, 8952), (71, 8955), (73, 9000), (83, 9078), (84, 9084), (91, 9150), (97, 9297), (104, 9498),

Gene: Silvafighter_15 Start: 9036, Stop: 9942, Start Num: 15

Candidate Starts for Silvafighter_15:

(Start: 15 @9036 has 41 MA's), (25, 9144), (35, 9207), (49, 9312), (61, 9375), (62, 9381), (64, 9393), (65, 9396), (81, 9486), (89, 9588), (94, 9702), (98, 9759),

Gene: Silvy_15 Start: 9037, Stop: 9943, Start Num: 15

Candidate Starts for Silvy_15:

(Start: 15 @9037 has 41 MA's), (25, 9145), (35, 9208), (38, 9256), (49, 9313), (61, 9376), (62, 9382), (64, 9394), (65, 9397), (81, 9487), (89, 9589), (94, 9703), (98, 9760),

Gene: Simpliphy_22 Start: 12218, Stop: 13089, Start Num: 12

Candidate Starts for Simpliphy_22:

(Start: 7 @12146 has 17 MA's), (Start: 12 @12218 has 220 MA's), (30, 12362), (Start: 42 @12455 has 1 MA's), (48, 12479), (50, 12491), (53, 12515), (60, 12533), (63, 12557), (86, 12716), (96, 12869), (99, 12890), (100, 12935), (101, 12956), (102, 12971), (104, 13082),

Gene: SimranZ1_13 Start: 8388, Stop: 9324, Start Num: 12

Candidate Starts for SimranZ1_13:

(Start: 4 @8295 has 6 MA's), (Start: 12 @8388 has 220 MA's), (Start: 13 @8394 has 66 MA's), (21, 8496), (28, 8526), (38, 8622), (Start: 42 @8646 has 1 MA's), (51, 8679), (57, 8715), (61, 8733), (64, 8751), (67, 8760), (73, 8823), (83, 8901), (91, 8973), (104, 9321),

Gene: SkinnyPete_15 Start: 9081, Stop: 9987, Start Num: 15

Candidate Starts for SkinnyPete_15:

(Start: 15 @9081 has 41 MA's), (25, 9189), (35, 9252), (38, 9300), (49, 9357), (61, 9420), (62, 9426), (64, 9438), (65, 9441), (80, 9528), (81, 9531), (89, 9633), (94, 9747), (98, 9804),

Gene: Smooch_55 Start: 26890, Stop: 27829, Start Num: 10

Candidate Starts for Smooch_55:

(Start: 9 @26878 has 15 MA's), (Start: 10 @26890 has 3 MA's), (16, 26962), (22, 27007), (23, 27010), (28, 27034), (31, 27052), (35, 27082), (43, 27160), (44, 27163), (56, 27220), (61, 27244), (73, 27319), (84, 27403), (91, 27469), (93, 27565),

Gene: Smurph_15 Start: 9036, Stop: 9942, Start Num: 15

Candidate Starts for Smurph_15:

(Start: 15 @9036 has 41 MA's), (25, 9144), (35, 9207), (49, 9312), (61, 9375), (62, 9381), (64, 9393), (65, 9396), (81, 9486), (89, 9588), (94, 9702), (98, 9759),

Gene: Snekmaggedon_15 Start: 9081, Stop: 9987, Start Num: 15

Candidate Starts for Snekmaggedon_15:

(Start: 15 @9081 has 41 MA's), (24, 9180), (25, 9189), (35, 9252), (38, 9300), (49, 9357), (61, 9420), (62, 9426), (64, 9438), (65, 9441), (80, 9528), (81, 9531), (89, 9633), (94, 9747), (98, 9804),

Gene: SophKB_21 Start: 12397, Stop: 13340, Start Num: 7

Candidate Starts for SophKB_21:

(Start: 7 @12397 has 17 MA's), (Start: 12 @12469 has 220 MA's), (30, 12613), (Start: 42 @12706 has 1 MA's), (48, 12730), (50, 12742), (53, 12766), (60, 12784), (63, 12808), (86, 12967), (96, 13120), (99, 13141), (100, 13186), (101, 13207), (102, 13222), (104, 13333),

Gene: Sotrice96_21 Start: 12425, Stop: 13296, Start Num: 12

Candidate Starts for Sotrice96_21:

(Start: 7 @12353 has 17 MA's), (Start: 12 @12425 has 220 MA's), (30, 12569), (Start: 42 @12662 has 1 MA's), (48, 12686), (50, 12698), (53, 12722), (60, 12740), (63, 12764), (86, 12923), (96, 13076), (99, 13097), (100, 13142), (101, 13163), (102, 13178), (104, 13289),

Gene: Sparkdehlily_13 Start: 8561, Stop: 9497, Start Num: 12

Candidate Starts for Sparkdehlily_13:

(Start: 12 @8561 has 220 MA's), (Start: 13 @8567 has 66 MA's), (21, 8669), (28, 8699), (Start: 42 @8819 has 1 MA's), (57, 8888), (61, 8906), (64, 8924), (67, 8933), (70, 8948), (71, 8951), (73, 8996), (83, 9074), (91, 9146), (104, 9494),

Gene: Spartacus_13 Start: 8563, Stop: 9499, Start Num: 13

Candidate Starts for Spartacus_13:

(8, 8536), (Start: 13 @8563 has 66 MA's), (21, 8671), (28, 8701), (Start: 42 @8821 has 1 MA's), (51, 8854), (57, 8890), (61, 8908), (64, 8926), (67, 8935), (73, 8998), (83, 9076), (91, 9148), (104, 9496),

Gene: Spikelee_14 Start: 8390, Stop: 9326, Start Num: 12

Candidate Starts for Spikelee_14:

(3, 8291), (Start: 12 @8390 has 220 MA's), (Start: 13 @8396 has 66 MA's), (21, 8498), (28, 8528), (Start: 42 @8648 has 1 MA's), (44, 8651), (45, 8654), (51, 8681), (57, 8717), (61, 8735), (64, 8753), (67, 8762), (73, 8825), (83, 8903), (91, 8975), (104, 9323),

Gene: SpongeBob_15 Start: 9081, Stop: 9987, Start Num: 15

Candidate Starts for SpongeBob_15:

(Start: 15 @9081 has 41 MA's), (24, 9180), (25, 9189), (35, 9252), (38, 9300), (49, 9357), (61, 9420), (62, 9426), (64, 9438), (65, 9441), (80, 9528), (81, 9531), (89, 9633), (94, 9747), (98, 9804),

Gene: Spoonbill_13 Start: 8538, Stop: 9474, Start Num: 12

Candidate Starts for Spoonbill_13:

(Start: 4 @8445 has 6 MA's), (Start: 12 @8538 has 220 MA's), (Start: 13 @8544 has 66 MA's), (21, 8646), (28, 8676), (38, 8772), (Start: 42 @8796 has 1 MA's), (44, 8799), (45, 8802), (57, 8865), (61, 8883), (64, 8901), (65, 8904), (67, 8910), (73, 8973), (83, 9051), (91, 9123), (104, 9471),

Gene: Squirty_14 Start: 8390, Stop: 9326, Start Num: 12

Candidate Starts for Squirty_14:

(Start: 12 @8390 has 220 MA's), (Start: 13 @8396 has 66 MA's), (26, 8522), (28, 8528), (38, 8624), (Start: 42 @8648 has 1 MA's), (51, 8681), (57, 8717), (61, 8735), (64, 8753), (65, 8756), (67, 8762), (70, 8777), (71, 8780), (73, 8825), (83, 8903), (84, 8909), (91, 8975), (104, 9323),

Gene: StAnnes_13 Start: 8579, Stop: 9515, Start Num: 13

Candidate Starts for StAnnes_13:

(8, 8552), (Start: 13 @8579 has 66 MA's), (21, 8687), (28, 8717), (Start: 42 @8837 has 1 MA's), (51, 8870), (57, 8906), (61, 8924), (64, 8942), (65, 8945), (67, 8951), (70, 8966), (71, 8969), (73, 9014), (83, 9092), (84, 9098), (91, 9164), (104, 9512),

Gene: Stank_23 Start: 12463, Stop: 13337, Start Num: 12

Candidate Starts for Stank_23:

(Start: 7 @12391 has 17 MA's), (Start: 12 @12463 has 220 MA's), (30, 12607), (Start: 42 @12700 has 1 MA's), (48, 12724), (50, 12736), (53, 12760), (60, 12778), (63, 12802), (86, 12961), (96, 13114), (99, 13135), (100, 13180), (101, 13201), (102, 13216), (104, 13327),

Gene: Stap_14 Start: 8389, Stop: 9325, Start Num: 12

Candidate Starts for Stap_14:

(Start: 4 @8296 has 6 MA's), (Start: 12 @8389 has 220 MA's), (Start: 13 @8395 has 66 MA's), (21, 8497), (26, 8521), (28, 8527), (38, 8623), (Start: 42 @8647 has 1 MA's), (44, 8650), (45, 8653), (51, 8680), (57, 8716), (61, 8734), (64, 8752), (67, 8761), (73, 8824), (83, 8902), (91, 8974), (104, 9322),

Gene: Starcevich_14 Start: 8388, Stop: 9324, Start Num: 12

Candidate Starts for Starcevich_14:

(Start: 12 @8388 has 220 MA's), (Start: 13 @8394 has 66 MA's), (21, 8496), (28, 8526), (38, 8622), (Start: 42 @8646 has 1 MA's), (57, 8715), (61, 8733), (64, 8751), (65, 8754), (67, 8760), (70, 8775), (71, 8778), (73, 8823), (83, 8901), (91, 8973), (97, 9120), (104, 9321),

Gene: Stark_22 Start: 12231, Stop: 13102, Start Num: 12

Candidate Starts for Stark_22:

(Start: 7 @12159 has 17 MA's), (Start: 12 @12231 has 220 MA's), (30, 12375), (Start: 42 @12468 has 1 MA's), (48, 12492), (50, 12504), (53, 12528), (60, 12546), (63, 12570), (86, 12729), (96, 12882), (99, 12903), (100, 12948), (101, 12969), (102, 12984), (104, 13095),

Gene: StellaBean_21 Start: 12397, Stop: 13340, Start Num: 7

Candidate Starts for StellaBean_21:

(Start: 7 @12397 has 17 MA's), (Start: 12 @12469 has 220 MA's), (30, 12613), (Start: 42 @12706 has 1 MA's), (48, 12730), (50, 12742), (53, 12766), (60, 12784), (63, 12808), (86, 12967), (96, 13120), (99, 13141), (100, 13186), (101, 13207), (102, 13222), (104, 13333),

Gene: StolenFromERC_23 Start: 12463, Stop: 13334, Start Num: 12

Candidate Starts for StolenFromERC_23:

(Start: 7 @12391 has 17 MA's), (Start: 12 @12463 has 220 MA's), (30, 12607), (Start: 42 @12700 has 1 MA's), (48, 12724), (50, 12736), (53, 12760), (60, 12778), (63, 12802), (86, 12961), (96, 13114), (99, 13135), (100, 13180), (101, 13201), (102, 13216), (104, 13327),

Gene: Strokeseat_13 Start: 8534, Stop: 9470, Start Num: 12

Candidate Starts for Strokeseat_13:

(Start: 12 @8534 has 220 MA's), (Start: 13 @8540 has 66 MA's), (21, 8642), (28, 8672), (38, 8768), (Start: 42 @8792 has 1 MA's), (57, 8861), (61, 8879), (64, 8897), (65, 8900), (67, 8906), (70, 8921), (71, 8924), (73, 8969), (83, 9047), (91, 9119), (104, 9467),

Gene: SuperGrey_13 Start: 8545, Stop: 9481, Start Num: 13

Candidate Starts for SuperGrey_13:

(8, 8518), (Start: 13 @8545 has 66 MA's), (21, 8653), (26, 8677), (28, 8683), (Start: 42 @8803 has 1 MA's), (51, 8836), (57, 8872), (61, 8890), (64, 8908), (67, 8917), (70, 8932), (71, 8935), (73, 8980), (83, 9058), (84, 9064), (91, 9130), (97, 9277), (104, 9478),

Gene: SwagPiggett_13 Start: 8538, Stop: 9474, Start Num: 12

Candidate Starts for SwagPiggett_13:

(Start: 4 @8445 has 6 MA's), (Start: 12 @8538 has 220 MA's), (Start: 13 @8544 has 66 MA's), (21, 8646), (28, 8676), (38, 8772), (Start: 42 @8796 has 1 MA's), (44, 8799), (45, 8802), (57, 8865), (61, 8883), (64, 8901), (67, 8910), (73, 8973), (83, 9051), (91, 9123), (104, 9471),

Gene: TBrady12_23 Start: 12460, Stop: 13331, Start Num: 12

Candidate Starts for TBrady12_23:

(Start: 7 @12388 has 17 MA's), (Start: 12 @12460 has 220 MA's), (30, 12604), (Start: 42 @12697 has 1 MA's), (48, 12721), (50, 12733), (53, 12757), (60, 12775), (63, 12799), (78, 12877), (86, 12958), (96, 13111), (99, 13132), (100, 13177), (101, 13198), (102, 13213), (104, 13324),

Gene: TChen_14 Start: 8979, Stop: 9921, Start Num: 12

Candidate Starts for TChen_14:

(Start: 12 @8979 has 220 MA's), (16, 9051), (19, 9072), (20, 9075), (22, 9096), (28, 9123), (34, 9159), (51, 9276), (58, 9327), (73, 9435), (80, 9468), (83, 9513), (84, 9519), (91, 9585),

Gene: TDanisky_13 Start: 8561, Stop: 9497, Start Num: 12

Candidate Starts for TDanisky_13:

(Start: 12 @8561 has 220 MA's), (Start: 13 @8567 has 66 MA's), (21, 8669), (28, 8699), (Start: 42 @8819 has 1 MA's), (57, 8888), (61, 8906), (64, 8924), (67, 8933), (70, 8948), (71, 8951), (73, 8996), (83, 9074), (91, 9146), (104, 9494),

Gene: Taj_13 Start: 8577, Stop: 9513, Start Num: 13

Candidate Starts for Taj_13:

(8, 8550), (Start: 13 @8577 has 66 MA's), (21, 8685), (28, 8715), (Start: 42 @8835 has 1 MA's), (51, 8868), (57, 8904), (61, 8922), (64, 8940), (65, 8943), (67, 8949), (70, 8964), (71, 8967), (73, 9012), (83, 9090), (84, 9096), (91, 9162), (97, 9309), (104, 9510),

Gene: Tapioca_15 Start: 9036, Stop: 9942, Start Num: 15

Candidate Starts for Tapioca_15:

(Start: 15 @9036 has 41 MA's), (25, 9144), (35, 9207), (38, 9255), (49, 9312), (61, 9375), (62, 9381), (64, 9393), (65, 9396), (81, 9486), (89, 9588), (94, 9702), (98, 9759),

Gene: Tarkin_23 Start: 13459, Stop: 14330, Start Num: 12

Candidate Starts for Tarkin_23:

(Start: 7 @13387 has 17 MA's), (Start: 12 @13459 has 220 MA's), (30, 13603), (Start: 42 @13696 has 1 MA's), (48, 13720), (50, 13732), (53, 13756), (60, 13774), (63, 13798), (86, 13957), (96, 14110), (99, 14131), (100, 14176), (101, 14197), (102, 14212), (104, 14323),

Gene: TeardropMSU_20 Start: 12377, Stop: 13248, Start Num: 12

Candidate Starts for TeardropMSU_20:

(Start: 7 @12305 has 17 MA's), (Start: 12 @12377 has 220 MA's), (30, 12521), (Start: 42 @12614 has 1 MA's), (48, 12638), (50, 12650), (53, 12674), (60, 12692), (63, 12716), (86, 12875), (96, 13028), (99, 13049), (100, 13094), (101, 13115), (102, 13130), (104, 13241),

Gene: Teaspoon_21 Start: 11841, Stop: 12787, Start Num: 7

Candidate Starts for Teaspoon_21:

(Start: 7 @11841 has 17 MA's), (Start: 12 @11913 has 220 MA's), (30, 12057), (Start: 42 @12150 has 1 MA's), (48, 12174), (50, 12186), (53, 12210), (60, 12228), (63, 12252), (86, 12411), (96, 12564), (99, 12585), (100, 12630), (101, 12651), (102, 12666), (104, 12777),

Gene: TelAviv_50 Start: 25744, Stop: 26695, Start Num: 9

Candidate Starts for TelAviv_50:

(Start: 9 @25744 has 15 MA's), (Start: 10 @25756 has 3 MA's), (16, 25828), (22, 25873), (23, 25876), (28, 25900), (31, 25918), (35, 25948), (43, 26026), (44, 26029), (56, 26086), (61, 26110), (73, 26185), (84, 26269), (91, 26335), (93, 26431),

Gene: Terminus_21 Start: 12560, Stop: 13431, Start Num: 12

Candidate Starts for Terminus_21:

(Start: 7 @12488 has 17 MA's), (Start: 12 @12560 has 220 MA's), (30, 12704), (Start: 42 @12797 has 1 MA's), (48, 12821), (50, 12833), (53, 12857), (60, 12875), (63, 12899), (86, 13058), (96, 13211), (99, 13232), (100, 13277), (101, 13298), (102, 13313), (104, 13424),

Gene: ThetaBob_14 Start: 8862, Stop: 9804, Start Num: 12

Candidate Starts for ThetaBob_14:

(Start: 12 @8862 has 220 MA's), (16, 8934), (19, 8955), (20, 8958), (22, 8979), (28, 9006), (34, 9042), (51, 9159), (58, 9210), (73, 9318), (80, 9351), (83, 9396), (84, 9402), (91, 9468),

Gene: Thresher_22 Start: 13221, Stop: 14092, Start Num: 12

Candidate Starts for Thresher_22:

(Start: 7 @13149 has 17 MA's), (Start: 12 @13221 has 220 MA's), (30, 13365), (Start: 42 @13458 has 1 MA's), (48, 13482), (50, 13494), (53, 13518), (60, 13536), (63, 13560), (86, 13719), (96, 13872), (99, 13893), (100, 13938), (101, 13959), (102, 13974), (104, 14085),

Gene: Tomaszewski_20 Start: 12070, Stop: 12941, Start Num: 12

Candidate Starts for Tomaszewski_20:

(Start: 7 @11998 has 17 MA's), (Start: 12 @12070 has 220 MA's), (30, 12214), (Start: 42 @12307 has 1 MA's), (48, 12331), (50, 12343), (53, 12367), (60, 12385), (63, 12409), (86, 12568), (96, 12721), (99, 12742), (100, 12787), (101, 12808), (102, 12823), (104, 12934),

Gene: TootsiePop_14 Start: 8399, Stop: 9335, Start Num: 12

Candidate Starts for TootsiePop_14:

(Start: 12 @8399 has 220 MA's), (Start: 13 @8405 has 66 MA's), (21, 8507), (26, 8531), (28, 8537), (Start: 42 @8657 has 1 MA's), (51, 8690), (57, 8726), (61, 8744), (64, 8762), (65, 8765), (67, 8771), (70, 8786), (71, 8789), (73, 8834), (83, 8912), (91, 8984), (97, 9131), (104, 9332),

Gene: Tootsieroll_14 Start: 8389, Stop: 9325, Start Num: 12

Candidate Starts for Tootsieroll_14:

(Start: 4 @8296 has 6 MA's), (Start: 12 @8389 has 220 MA's), (Start: 13 @8395 has 66 MA's), (21, 8497), (26, 8521), (28, 8527), (38, 8623), (Start: 42 @8647 has 1 MA's), (44, 8650), (45, 8653), (51, 8680), (57, 8716), (61, 8734), (64, 8752), (67, 8761), (73, 8824), (83, 8902), (91, 8974), (104, 9322),

Gene: Totinger_14 Start: 8386, Stop: 9322, Start Num: 12

Candidate Starts for Totinger_14:

(Start: 12 @8386 has 220 MA's), (Start: 13 @8392 has 66 MA's), (21, 8494), (28, 8524), (38, 8620), (Start: 42 @8644 has 1 MA's), (57, 8713), (61, 8731), (64, 8749), (65, 8752), (67, 8758), (70, 8773), (71, 8776), (73, 8821), (83, 8899), (91, 8971), (97, 9118), (104, 9319),

Gene: Traaww1_18 Start: 12115, Stop: 12986, Start Num: 12

Candidate Starts for Traaww1_18:

(Start: 7 @12043 has 17 MA's), (Start: 12 @12115 has 220 MA's), (30, 12259), (Start: 42 @12352 has 1 MA's), (48, 12376), (50, 12388), (53, 12412), (60, 12430), (63, 12454), (86, 12613), (96, 12766), (99, 12787), (100, 12832), (101, 12853), (102, 12868), (104, 12979),

Gene: Tuco_21 Start: 12469, Stop: 13343, Start Num: 12

Candidate Starts for Tuco_21:

(Start: 7 @12397 has 17 MA's), (Start: 12 @12469 has 220 MA's), (30, 12613), (Start: 42 @12706 has 1 MA's), (48, 12730), (50, 12742), (53, 12766), (60, 12784), (63, 12808), (86, 12967), (96, 13120), (99, 13141), (100, 13186), (101, 13207), (102, 13222), (104, 13333),

Gene: Tweety_12 Start: 8579, Stop: 9515, Start Num: 13

Candidate Starts for Tweety_12:

(8, 8552), (Start: 13 @8579 has 66 MA's), (21, 8687), (28, 8717), (Start: 42 @8837 has 1 MA's), (51, 8870), (57, 8906), (61, 8924), (64, 8942), (65, 8945), (67, 8951), (70, 8966), (71, 8969), (73, 9014), (83, 9092), (84, 9098), (91, 9164), (97, 9311), (104, 9512),

Gene: UncleRicky_14 Start: 8390, Stop: 9326, Start Num: 12

Candidate Starts for UncleRicky_14:

(Start: 4 @8297 has 6 MA's), (Start: 12 @8390 has 220 MA's), (Start: 13 @8396 has 66 MA's), (21, 8498), (28, 8528), (Start: 42 @8648 has 1 MA's), (57, 8717), (61, 8735), (64, 8753), (67, 8762), (73, 8825), (83, 8903), (84, 8909), (91, 8975), (104, 9323),

Gene: VRedHorse_13 Start: 8534, Stop: 9470, Start Num: 12

Candidate Starts for VRedHorse_13:

(Start: 12 @8534 has 220 MA's), (Start: 13 @8540 has 66 MA's), (21, 8642), (28, 8672), (38, 8768), (Start: 42 @8792 has 1 MA's), (57, 8861), (61, 8879), (64, 8897), (65, 8900), (67, 8906), (70, 8921), (71, 8924), (73, 8969), (83, 9047), (91, 9119), (104, 9467),

Gene: Vagabond_53 Start: 25577, Stop: 26528, Start Num: 9

Candidate Starts for Vagabond_53:

(Start: 9 @25577 has 15 MA's), (Start: 10 @25589 has 3 MA's), (16, 25661), (22, 25706), (23, 25709), (28, 25733), (31, 25751), (35, 25781), (43, 25859), (44, 25862), (56, 25919), (61, 25943), (73, 26018), (84, 26102), (91, 26168), (93, 26264),

Gene: Velveteen_14 Start: 8383, Stop: 9319, Start Num: 12

Candidate Starts for Velveteen_14:

(Start: 12 @8383 has 220 MA's), (Start: 13 @8389 has 66 MA's), (21, 8491), (28, 8521), (38, 8617), (Start: 42 @8641 has 1 MA's), (57, 8710), (61, 8728), (64, 8746), (65, 8749), (67, 8755), (70, 8770), (71, 8773), (73, 8818), (83, 8896), (91, 8968), (104, 9316),

Gene: Veteran_13 Start: 8572, Stop: 9508, Start Num: 13

Candidate Starts for Veteran_13:

(8, 8545), (Start: 13 @8572 has 66 MA's), (21, 8680), (28, 8710), (Start: 42 @8830 has 1 MA's), (51, 8863), (57, 8899), (61, 8917), (64, 8935), (65, 8938), (67, 8944), (70, 8959), (71, 8962), (73, 9007), (83, 9085), (84, 9091), (91, 9157), (97, 9304), (104, 9505),

Gene: Vorrps_51 Start: 25336, Stop: 26287, Start Num: 9

Candidate Starts for Vorrps_51:

(Start: 9 @25336 has 15 MA's), (Start: 10 @25348 has 3 MA's), (16, 25420), (22, 25465), (23, 25468), (28, 25492), (31, 25510), (35, 25540), (43, 25618), (44, 25621), (56, 25678), (61, 25702), (73, 25777), (84, 25861), (91, 25927), (93, 26023),

Gene: Wachhund_13 Start: 8532, Stop: 9468, Start Num: 12

Candidate Starts for Wachhund_13:

(Start: 12 @8532 has 220 MA's), (Start: 13 @8538 has 66 MA's), (21, 8640), (28, 8670), (Start: 42 @8790 has 1 MA's), (51, 8823), (61, 8877), (64, 8895), (67, 8904), (73, 8967), (83, 9045), (84, 9051), (91, 9117), (97, 9264), (104, 9465),

Gene: Wee_12 Start: 8576, Stop: 9512, Start Num: 13

Candidate Starts for Wee_12:

(8, 8549), (Start: 13 @8576 has 66 MA's), (21, 8684), (28, 8714), (Start: 42 @8834 has 1 MA's), (51, 8867), (57, 8903), (61, 8921), (64, 8939), (65, 8942), (67, 8948), (70, 8963), (71, 8966), (73, 9011), (83, 9089), (84, 9095), (91, 9161), (97, 9308), (104, 9509),

Gene: Whatsapiecost_13 Start: 8577, Stop: 9513, Start Num: 13

Candidate Starts for Whatsapiecost_13:

(8, 8550), (Start: 13 @8577 has 66 MA's), (21, 8685), (28, 8715), (Start: 42 @8835 has 1 MA's), (51, 8868), (57, 8904), (61, 8922), (64, 8940), (65, 8943), (67, 8949), (70, 8964), (71, 8967), (73, 9012), (83, 9090), (84, 9096), (91, 9162), (97, 9309), (104, 9510),

Gene: Whouxphf_13 Start: 8526, Stop: 9462, Start Num: 12

Candidate Starts for Whouxphf_13:

(Start: 12 @8526 has 220 MA's), (Start: 13 @8532 has 66 MA's), (21, 8634), (28, 8664), (Start: 42 @8784 has 1 MA's), (44, 8787), (45, 8790), (51, 8817), (57, 8853), (61, 8871), (64, 8889), (67, 8898), (70, 8913), (71, 8916), (73, 8961), (83, 9039), (84, 9045), (91, 9111), (97, 9258), (104, 9459),

Gene: Wiggin_23 Start: 12463, Stop: 13337, Start Num: 12

Candidate Starts for Wiggin_23:

(Start: 7 @12391 has 17 MA's), (Start: 12 @12463 has 220 MA's), (30, 12607), (Start: 42 @12700 has 1 MA's), (48, 12724), (50, 12736), (53, 12760), (60, 12778), (63, 12802), (86, 12961), (96, 13114), (99, 13135), (100, 13180), (101, 13201), (102, 13216), (104, 13327),

Gene: WillSterrel_13 Start: 8563, Stop: 9499, Start Num: 13

Candidate Starts for WillSterrel_13:

(8, 8536), (Start: 13 @8563 has 66 MA's), (21, 8671), (28, 8701), (Start: 42 @8821 has 1 MA's), (51, 8854), (57, 8890), (61, 8908), (64, 8926), (67, 8935), (73, 8998), (83, 9076), (91, 9148), (104, 9496),

Gene: Willez_20 Start: 11977, Stop: 12848, Start Num: 12

Candidate Starts for Willez_20:

(Start: 7 @11905 has 17 MA's), (Start: 12 @11977 has 220 MA's), (30, 12121), (Start: 42 @12214 has 1 MA's), (48, 12238), (50, 12250), (53, 12274), (60, 12292), (63, 12316), (86, 12475), (96, 12628), (99, 12649), (100, 12694), (101, 12715), (102, 12730), (104, 12841),

Gene: Winget_54 Start: 26016, Stop: 26967, Start Num: 9

Candidate Starts for Winget_54:

(Start: 9 @26016 has 15 MA's), (Start: 10 @26028 has 3 MA's), (16, 26100), (22, 26145), (23, 26148), (28, 26172), (31, 26190), (35, 26220), (43, 26298), (44, 26301), (56, 26358), (61, 26382), (73, 26457), (84, 26541), (91, 26607), (93, 26703),

Gene: XFactor_13 Start: 8577, Stop: 9513, Start Num: 13

Candidate Starts for XFactor_13:

(8, 8550), (Start: 13 @8577 has 66 MA's), (21, 8685), (28, 8715), (Start: 42 @8835 has 1 MA's), (51, 8868), (57, 8904), (61, 8922), (64, 8940), (67, 8949), (70, 8964), (71, 8967), (73, 9012), (83, 9090), (84, 9096), (91, 9162), (97, 9309), (104, 9510),

Gene: Xandras_23 Start: 12463, Stop: 13334, Start Num: 12

Candidate Starts for Xandras_23:

(Start: 7 @12391 has 17 MA's), (Start: 12 @12463 has 220 MA's), (30, 12607), (Start: 42 @12700 has 1 MA's), (48, 12724), (50, 12736), (53, 12760), (60, 12778), (63, 12802), (86, 12961), (96, 13114), (99, 13135), (100, 13180), (101, 13201), (102, 13216), (104, 13327),

Gene: Xeno_15 Start: 9036, Stop: 9942, Start Num: 15

Candidate Starts for Xeno_15:

(Start: 15 @9036 has 41 MA's), (25, 9144), (35, 9207), (38, 9255), (49, 9312), (61, 9375), (62, 9381), (64, 9393), (65, 9396), (81, 9486), (89, 9588), (94, 9702), (98, 9759),

Gene: Xerxes_15 Start: 9036, Stop: 9942, Start Num: 15

Candidate Starts for Xerxes_15:

(Start: 15 @9036 has 41 MA's), (25, 9144), (35, 9207), (49, 9312), (61, 9375), (62, 9381), (64, 9393), (65, 9396), (81, 9486), (89, 9588), (94, 9702), (98, 9759),

Gene: Xula_14 Start: 9411, Stop: 10404, Start Num: 12

Candidate Starts for Xula_14:

(1, 9222), (Start: 12 @9411 has 220 MA's), (17, 9495), (30, 9558), (32, 9570), (33, 9576), (41, 9663), (52, 9714), (55, 9732), (72, 9822), (76, 9852), (77, 9855), (84, 9918), (85, 9921), (90, 9984), (91, 9987), (105, 10401),

Gene: YassJohnny_21 Start: 12469, Stop: 13343, Start Num: 12

Candidate Starts for YassJohnny_21:

(Start: 7 @12397 has 17 MA's), (Start: 12 @12469 has 220 MA's), (30, 12613), (Start: 42 @12706 has 1 MA's), (48, 12730), (50, 12742), (53, 12766), (60, 12784), (63, 12808), (86, 12967), (96, 13120), (99, 13141), (100, 13186), (101, 13207), (102, 13222), (104, 13333),

Gene: Yorick_13 Start: 8536, Stop: 9472, Start Num: 12

Candidate Starts for Yorick_13:

(Start: 4 @8443 has 6 MA's), (Start: 12 @8536 has 220 MA's), (Start: 13 @8542 has 66 MA's), (21, 8644), (28, 8674), (38, 8770), (Start: 42 @8794 has 1 MA's), (44, 8797), (45, 8800), (57, 8863), (61, 8881), (64, 8899), (67, 8908), (73, 8971), (83, 9049), (91, 9121), (104, 9469),

Gene: Youngblood_21 Start: 12641, Stop: 13512, Start Num: 12

Candidate Starts for Youngblood_21:

(Start: 7 @12569 has 17 MA's), (Start: 12 @12641 has 220 MA's), (30, 12785), (Start: 42 @12878 has 1 MA's), (48, 12902), (50, 12914), (53, 12938), (60, 12956), (63, 12980), (86, 13139), (96, 13292), (99, 13313), (100, 13358), (101, 13379), (102, 13394), (104, 13505),

Gene: YungJamal_56 Start: 26055, Stop: 27006, Start Num: 9

Candidate Starts for YungJamal_56:

(Start: 9 @26055 has 15 MA's), (Start: 10 @26067 has 3 MA's), (16, 26139), (22, 26184), (23, 26187), (28, 26211), (31, 26229), (35, 26259), (43, 26337), (44, 26340), (56, 26397), (61, 26421), (73, 26496), (84, 26580), (91, 26646), (93, 26742),

Gene: Zakhe101_53 Start: 25875, Stop: 26826, Start Num: 9

Candidate Starts for Zakhe101_53:

(Start: 9 @25875 has 15 MA's), (Start: 10 @25887 has 3 MA's), (16, 25959), (22, 26004), (23, 26007), (28, 26031), (31, 26049), (35, 26079), (43, 26157), (44, 26160), (56, 26217), (61, 26241), (73, 26316), (84, 26400), (91, 26466), (93, 26562),

Gene: Zerg_13 Start: 8538, Stop: 9474, Start Num: 12

Candidate Starts for Zerg_13:

(5, 8451), (Start: 12 @8538 has 220 MA's), (Start: 13 @8544 has 66 MA's), (21, 8646), (26, 8670), (28, 8676), (38, 8772), (Start: 42 @8796 has 1 MA's), (57, 8865), (61, 8883), (64, 8901), (67, 8910), (70, 8925), (71, 8928), (73, 8973), (83, 9051), (91, 9123), (104, 9471),

Gene: Zizzle_13 Start: 8540, Stop: 9476, Start Num: 12

Candidate Starts for Zizzle_13:

(Start: 4 @8447 has 6 MA's), (Start: 12 @8540 has 220 MA's), (Start: 13 @8546 has 66 MA's), (21, 8648), (28, 8678), (38, 8774), (Start: 42 @8798 has 1 MA's), (44, 8801), (45, 8804), (57, 8867), (61, 8885), (64, 8903), (67, 8912), (73, 8975), (83, 9053), (91, 9125), (104, 9473),

Gene: xkcd_21 Start: 12129, Stop: 13003, Start Num: 12

Candidate Starts for xkcd_21:

(Start: 7 @12057 has 17 MA's), (Start: 12 @12129 has 220 MA's), (30, 12273), (Start: 42 @12366 has 1 MA's), (48, 12390), (50, 12402), (53, 12426), (60, 12444), (63, 12468), (86, 12627), (96, 12780), (99, 12801), (100, 12846), (101, 12867), (102, 12882), (104, 12993),