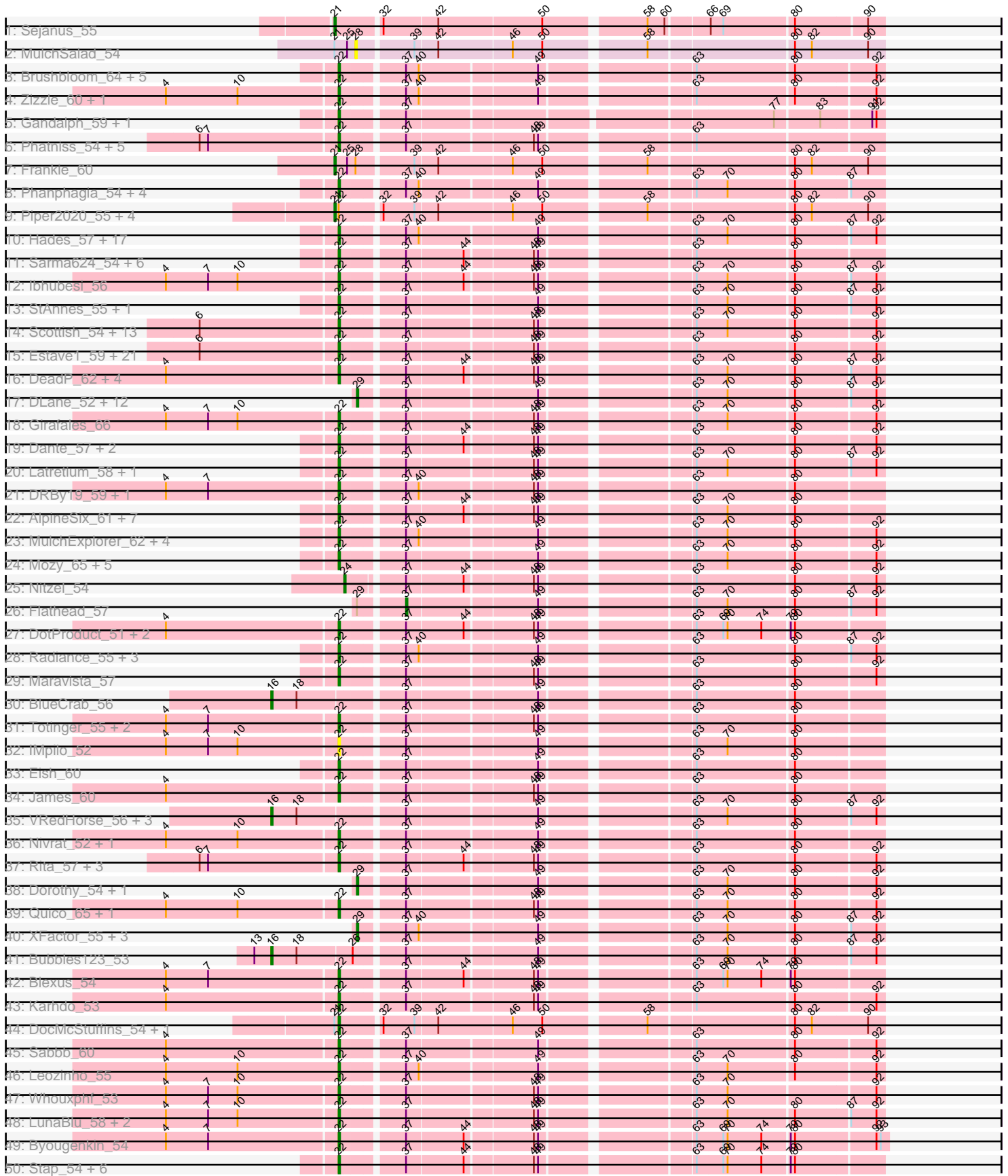
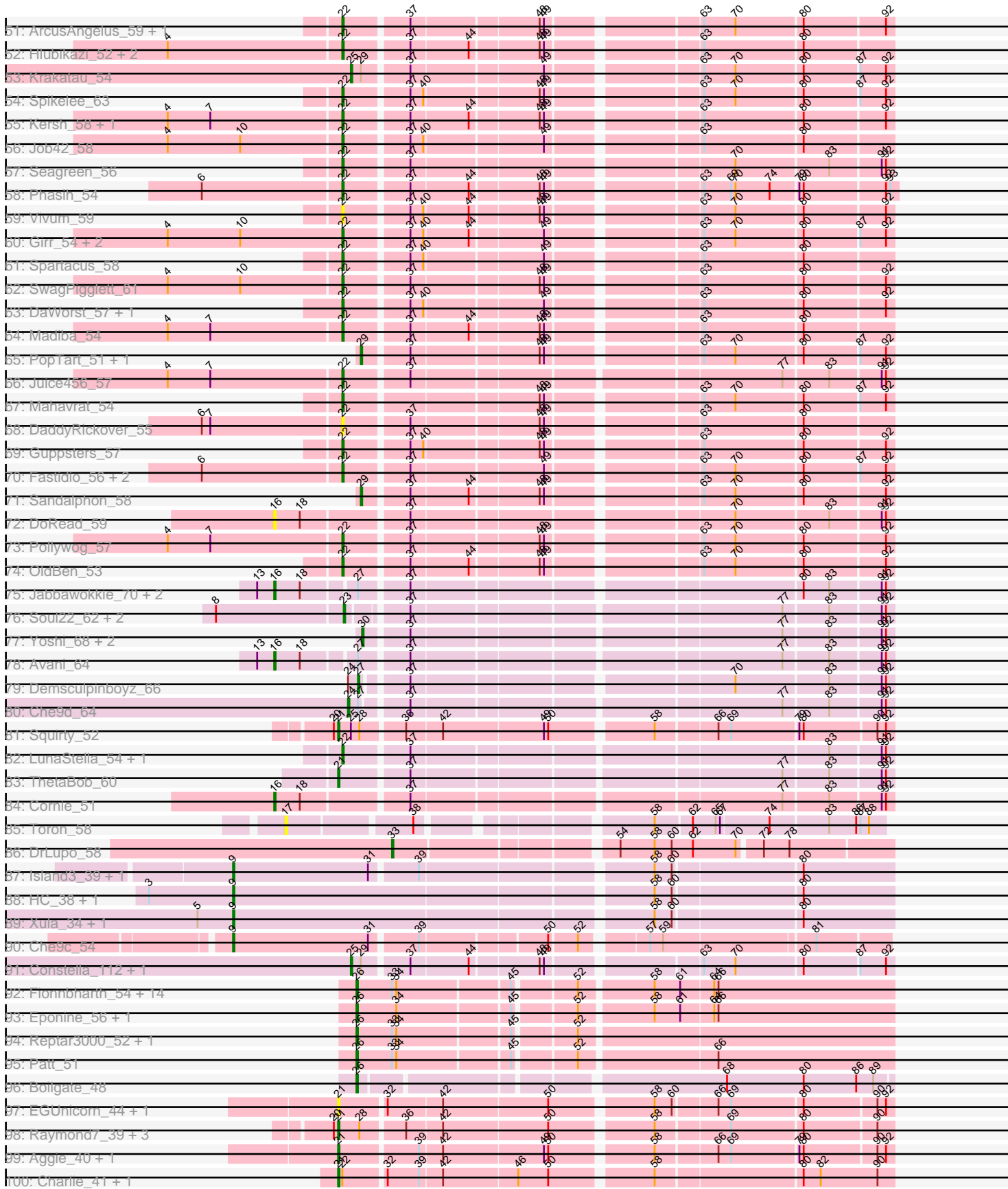


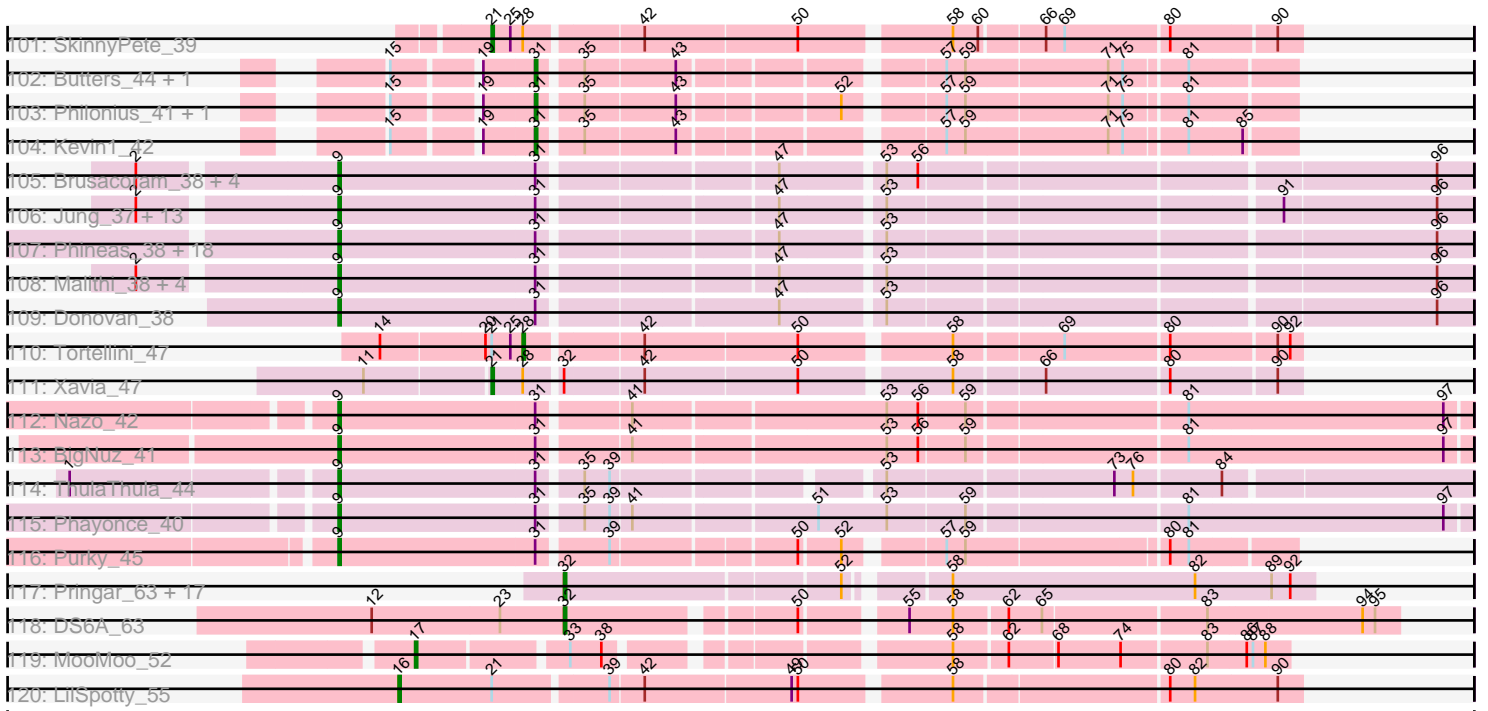
Pham 202596



Pham 202596



Pham 202596



Note: Tracks are now grouped by subcluster and scaled. Switching in subcluster is indicated by changes in track color. Track scale is now set by default to display the region 30 bp upstream of start 1 to 30 bp downstream of the last possible start. If this default region is judged to be packed too tightly with annotated starts, the track will be further scaled to only show that region of the ORF with annotated starts. This action will be indicated by adding "Zoomed" to the title. For starts, yellow indicates the location of called starts comprised solely of Glimmer/GeneMark auto-annotations, green indicates the location of called starts with at least 1 manual gene annotation.

Pham 202596 Report

This analysis was run 01/18/25 on database version 583.

Pham number 202596 has 363 members, 25 are drafts.

Phages represented in each track:

- Track 1 : Sejanus_55
- Track 2 : MulchSalad_54
- Track 3 : Brushbloom_64, Mova_57, Whatsapiecost_57, Minnie_60, MilleniumForce_60, Squirty_59
- Track 4 : Zizzle_60, Mattes_60
- Track 5 : Gandalph_59, Cornucopia_58
- Track 6 : Phatniss_54, Lij_52, UncleRicky_55, Drago_54, DirtMcgirt_55, Lorde_56
- Track 7 : Frankie_60
- Track 8 : Phanphagia_54, Shauna1_55, Donkeykong_60, MilanaBonita_47, Akhila_48
- Track 9 : Piper2020_55, ChickenDinner_56, TootsiePop_53, Misha28_53, Aloeri_56
- Track 10 : Hades_57, CaptainTrips_53, MinionDave_55, TDanisky_64, SG4_53, GUmbie_54, OwlsT2W_56, Inventum_51, PhesterPhotato_57, Eradicator_49, Juniper1_54, Wachhund_58, BuzzLyseyear_62, Enby_57, Sassafras_54, Veteran_53, Bipolar_55, Sparkdehlily_64
- Track 11 : Sarma624_54, BigPhil_52, Kingsley_53, Cerasum_52, Tootsieroll_57, Coco12_55, Velveteen_51
- Track 12 : lbhubesi_56
- Track 13 : StAnnes_55, SimranZ1_56
- Track 14 : Scottish_54, Daenerys_50, Pacc40_50, KingMidas_55, Deb65_51, PMC_53, Boomer_61, Nimbo_50, JoeyJr_51, PHappiness_51, Geralt_51, Leperchaun_48, Rockne_57, RitaG_51
- Track 15 : Estave1_59, Pippy_54, LastJedi_50, Crumble_51, Lizziana_62, Starcevich_55, ShowerHandel_59, Clifton_51, OlympiaSaint_58, Burwell21_54, NormanBulbieJr_56, Priscilla_56, FreddyB_57, Yorick_55, Cabrinians_57, Jarcob_56, Martik_56, Koella_50, Brocalys_51, ShiLan_55, Saal_58, Gorge_60
- Track 16 : DeadP_62, Taj_60, Wee_59, KristaRAM_59, Tweety_56
- Track 17 : DLane_52, Moonbeam_55, Filuzino_55, Zerg_56, Bobi_62, Ardmore_49, Melissaueren88_55, Ogopogo_62, Emma_58, Phalconet_55, RockyHorror_57, Kenuha5_54, Fruitloop_54
- Track 18 : Girafales_66
- Track 19 : Dante_57, Ovechkin_55, Ramsey_56
- Track 20 : Latretium_58, Grimmer_66
- Track 21 : DRBy19_59, Philus_59
- Track 22 : AlpineSix_61, Sebastian_61, Jinglebell_61, Modragons_60, Ochi17_59, OfUltron_61, Llama_61, Oksu_60

- Track 23 : MulchExplorer_62, GigiOuiOui_52, QuickMath_57, DosHalletts_58, Kimberlium_58
- Track 24 : Mozy_65, SiSi_54, Alexphander_60, SuperGrey_60, Mantra_52, Plumbus_58
- Track 25 : Nitzel_54
- Track 26 : Flathead_57
- Track 27 : DotProduct_51, Firehouse51_57, Mutaforma13_60
- Track 28 : Radiance_55, Renaud18_61, Hegedechwinu_56, IbOuu_57
- Track 29 : Maravista_57
- Track 30 : BlueCrab_56
- Track 31 : Totinger_55, ByChance_48, LittleShirley_55
- Track 32 : IMpilo_52
- Track 33 : Eish_60
- Track 34 : James_60
- Track 35 : VRedHorse_56, Royals2015_59, Beakin_58, Rialto_62
- Track 36 : Nivrat_52, LilMoolah_54
- Track 37 : Rita_57, Chuckly_59, BobaPhett_60, MadMen_54
- Track 38 : Dorothy_54, RedBird_54
- Track 39 : Quico_65, Florinda_68
- Track 40 : XFactor_55, Ms6_52, Hamulus_58, Batiatus_55
- Track 41 : Bubbles123_53
- Track 42 : Blexus_54
- Track 43 : Karhdo_53
- Track 44 : DocMcStuffins_54, Awesomesauce_55
- Track 45 : Sabbb_60
- Track 46 : Leozinho_55
- Track 47 : Whouxphf_53
- Track 48 : LunaBlu_58, Fancypants_58, Galactic_55
- Track 49 : Byougenkin_54
- Track 50 : Stap_54, Doomphist_56, Empress_54, Poenanya_56, Spoonbill_53, Polka14_54, BodEinwohner17_56
- Track 51 : ArcusAngelus_59, Chevrolet_62
- Track 52 : Hlubikazi_52, Mandlovu_52, Strokeseat_52
- Track 53 : Krakatau_54
- Track 54 : Spikelee_63
- Track 55 : Kersh_58, ShroomBoi_58
- Track 56 : Job42_58
- Track 57 : Seagreen_56
- Track 58 : Phasih_54
- Track 59 : Vivum_59
- Track 60 : Girr_54, Ruby_52, MisterCuddles_54
- Track 61 : Spartacus_58
- Track 62 : SwagPiggett_61
- Track 63 : DaWorst_57, Doug_58
- Track 64 : Madiba_54
- Track 65 : PopTart_51, SassyB_51
- Track 66 : Juice456_57
- Track 67 : Mahavrat_54
- Track 68 : DaddyRickover_55
- Track 69 : Guppsters_57
- Track 70 : Fastidio_56, Aubs_57, DillTech15_53
- Track 71 : Sandalphon_58
- Track 72 : DoRead_59

- Track 73 : Pollywog_57
- Track 74 : OldBen_53
- Track 75 : Jabbawokkie_70, Blarby_68, Zapner_69
- Track 76 : Soul22_62, EleanorGeorge_57, Che8_61
- Track 77 : Yoshi_68, Harley_59, JalFarm20_69
- Track 78 : Avani_64
- Track 79 : Demsculpinboyz_66
- Track 80 : Che9d_64
- Track 81 : Squirty_52
- Track 82 : LunaStella_54, TChen_56
- Track 83 : ThetaBob_60
- Track 84 : Cornie_51
- Track 85 : Toron_58
- Track 86 : DrLupo_58
- Track 87 : Island3_39, Brujita_39
- Track 88 : HC_38, Babsiella_40
- Track 89 : Xula_34, QueenHazel_35
- Track 90 : Che9c_54
- Track 91 : Constella_112, Marker_58
- Track 92 : Fionnbharth_54, Juliette_56, OmniCritical_53, Taquito_54, Wintermute_54, Y10_53, Mitti_54, Kraw_55, JF1_54, Malthus_55, Chancellor_54, SamScheppers_52, Cheetobro_54, Slarp_54, Y2_53
- Track 93 : Eponine_56, Ruthiejr_55
- Track 94 : Reptar3000_52, MissDaisy_52
- Track 95 : Patt_51
- Track 96 : Boilgate_48
- Track 97 : EGUnicorn_44, Bosection6_42
- Track 98 : Raymond7_39, BabeRuth_46, Purgamenstris_45, Rebel_37
- Track 99 : Aggie_40, Silvy_40
- Track 100 : Charlie_41, Journey_40
- Track 101 : SkinnyPete_39
- Track 102 : Butters_44, Rubeelu_44
- Track 103 : Philonius_41, MichelleMyBell_41
- Track 104 : Kevin1_42
- Track 105 : Brusacoram_38, GreaseLightnin_38, Thespis_38, Xeno_40, Atcoo_38
- Track 106 : Jung_37, KilKor_38, Phalm_38, Willsammy_37, Bunnies_38, Juniorsmint_38, StressBall_38, Glaske_38, Polkaroo_38, Megiddo_38, CactusJack_38, Ksquared_38, Gavriela_38, StevieRay_38
- Track 107 : Phineas_38, Kari_38, Mangethe_38, Majeke_38, HUHilltop_38, Vidya_38, Phegasus_38, Langerak_38, Fishburne_38, Arib1_38, Jebeks_39, Sonah_38, Zilizebeth_38, Bartholomew_37, Venti_38, Dynamo_38, Necropolis_38, FirstPlacePfu_38, Techage_38
- Track 108 : Malithi_38, Camster_38, Pygmy_40, Shipwreck_40, Bogie_40
- Track 109 : Donovan_38
- Track 110 : Tortellini_47
- Track 111 : Xavia_47
- Track 112 : Nazo_42
- Track 113 : BigNuz_41
- Track 114 : ThulaThula_44
- Track 115 : Phayonce_40
- Track 116 : Purky_45
- Track 117 : Pringar_63, FeliMaine_66, Huphlepuuff_66, Tesla_61, Beelzebub_68, Poise_64, Clarkson_65, Gattaca_62, Raela_64, JoieB_65, MosMoris_61,

VasuNzinga_63, Corazon_62, Marvin_60, Blackbeetle_64, RedRaider77_63, Caprice_59, GoongGoong_61

- Track 118 : DS6A_63
- Track 119 : MooMoo_52
- Track 120 : LilSpotty_55

Summary of Final Annotations (See graph section above for start numbers):

The start number called the most often in the published annotations is 22, it was called in 180 of the 338 non-draft genes in the pham.

Genes that call this "Most Annotated" start:

- Akhila_48, Alexphander_60, AlpineSix_61, ArcusAngelus_59, Aubs_57, Awesomesauce_55, BigPhil_52, Bipolar_55, Blexus_54, BobaPhett_60, BodEinwohner17_56, Boomer_61, Brocalys_51, Brushbloom_64, Burwell21_54, BuzzLyseyear_62, ByChance_48, Byougenkin_54, Cabrinians_57, CaptainTrips_53, Cerasum_52, Chevrolet_62, Chuckly_59, Clifton_51, Coco12_55, Cornucopia_58, Crumble_51, DRBy19_59, DaWorst_57, DaddyRickover_55, Daenerys_50, Dante_57, DeadP_62, Deb65_51, DillTech15_53, DirtMcgirt_55, DocMcStuffins_54, Donkeykong_60, Doomphist_56, DosHalletts_58, DotProduct_51, Doug_58, Drago_54, Eish_60, Empress_54, Enby_57, Eradicator_49, Estave1_59, Fancypants_58, Fastidio_56, Firehouse51_57, Florinda_68, FreddyB_57, GUmbe_54, Galactic_55, Gandalph_59, Geralt_51, GigiOuiOui_52, Girafales_66, Girr_54, Gorge_60, Grimmer_66, Guppsters_57, Hades_57, Hegedechwinu_56, Hlubikazi_52, IMpilo_52, IbOuu_57, Ibhubesi_56, Inventum_51, James_60, Jarcob_56, Jinglebell_61, Job42_58, JoeyJr_51, Juice456_57, Juniper1_54, Karhdo_53, Kersh_58, Kimberlium_58, KingMidas_55, Kingsley_53, Koella_50, KristaRAM_59, LastJedi_50, Latretium_58, Leozinho_55, Leperchaun_48, LilMoolah_54, LittleShirley_55, Lizziana_62, Llama_61, Llij_52, Lorde_56, LunaBlu_58, LunaStella_54, MadMen_54, Madiba_54, Mahavrat_54, Mandlovu_52, Mantra_52, Maravista_57, Martik_56, Mattes_60, MilanaBonita_47, MilleniumForce_60, MinionDave_55, Minnie_60, MisterCuddles_54, Modragons_60, Mova_57, Mozy_65, MulchExplorer_62, Mutaforma13_60, Nimbo_50, Nivrat_52, NormanBulbieJr_56, Ochi17_59, OfUltron_61, Oksu_60, OldBen_53, OlympiaSaint_58, Ovechkin_55, OwlsT2W_56, PHappiness_51, PMC_53, Pacc40_50, Phanphagia_54, Phasih_54, Phatniss_54, PhesterPotato_57, Philus_59, Pippy_54, Plumbus_58, Poenanya_56, Polka14_54, Pollywog_57, Priscilla_56, QuickMath_57, Quico_65, Radiance_55, Ramsey_56, Renaud18_61, RitaG_51, Rita_57, Rockne_57, Ruby_52, SG4_53, Saal_58, Sabbb_60, Sarma624_54, Sassafras_54, Scottish_54, Seabastian_61, Seagreen_56, Shauna1_55, ShiLan_55, ShowerHandel_59, ShroomBoi_58, SiSi_54, SimranZ1_56, Sparkdehlily_64, Spartacus_58, Spikelee_63, Spoonbill_53, Squirty_59, StAnnes_55, Stap_54, Starcevich_55, Strokeseat_52, SuperGrey_60, SwagPigglett_61, TChen_56, TDanisky_64, Taj_60, Tootsieroll_57, Totinger_55, Tweety_56, UncleRicky_55, Velveteen_51, Veteran_53, Vivum_59, Wachhund_58, Wee_59, Whatspiecost_57, Whouxphf_53, Yorick_55, Zizzle_60,

Genes that have the "Most Annotated" start but do not call it:

- Aloeri_56, Charlie_41, ChickenDinner_56, Journey_40, Misha28_53, Piper2020_55, TootsiePop_53,

Genes that do not have the "Most Annotated" start:

- Aggie_40, Ardmore_49, Arib1_38, Atcoo_38, Avani_64, BabeRuth_46, Babsiella_40, Bartholomew_37, Batiatus_55, Beakin_58, Beelzebub_68, BigNuz_41, Blackbeetle_64, Blarby_68, BlueCrab_56, Bobi_62, Bogie_40, Boilgate_48, Bosection6_42, Brujita_39, Brusacoram_38, Bubbles123_53, Bunnies_38, Butters_44, CactusJack_38, Camster_38, Caprice_59, Chancellor_54, Che8_61, Che9c_54, Che9d_64, Cheetobro_54, Clarkson_65, Constella_112, Corazon_62, Cornie_51, DLane_52, DS6A_63, Demsculpinboyz_66, DoRead_59, Donovan_38, Dorothy_54, DrLupo_58, Dynamo_38, EGUunicorn_44, EleanorGeorge_57, Emma_58, Eponine_56, FeliMaine_66, Filuzino_55, Fionnbharth_54, FirstPlacePfu_38, Fishburne_38, Flathead_57, Frankie_60, Fruitloop_54, Gattaca_62, Gavriela_38, Glaske_38, GoongGoong_61, GreaseLightnin_38, HC_38, HUHilltop_38, Hamulus_58, Harley_59, Huphlepuuff_66, Island3_39, JF1_54, Jabbawokkie_70, JalFarm20_69, Jebeks_39, JoieB_65, Juliette_56, Jung_37, Juniormint_38, Kari_38, Kenuha5_54, Kevin1_42, KilKor_38, Krakatau_54, Kraw_55, Ksquared_38, Langerak_38, LilSpotty_55, Majeke_38, Malithi_38, Malthus_55, Mangethe_38, Marker_58, Marvin_60, Megiddo_38, Melissauren88_55, MichelleMyBell_41, MissDaisy_52, Mitti_54, MooMoo_52, Moonbeam_55, MosMoris_61, Ms6_52, MulchSalad_54, Nazo_42, Necropolis_38, Nitzel_54, OgoPogo_62, OmniCritical_53, Patt_51, Phalconet_55, Phalm_38, Phayonce_40, Phegasus_38, Philonius_41, Phineas_38, Poise_64, Polkaroo_38, PopTart_51, Pringar_63, Purgamenstris_45, Purky_45, Pygmy_40, QueenHazel_35, Raela_64, Raymond7_39, Rebel_37, RedBird_54, RedRaider77_63, Reptar3000_52, Rialto_62, RockyHorror_57, Royals2015_59, Rubeelu_44, Ruthiejr_55, SamScheppers_52, Sandalphon_58, SassyB_51, Sejanus_55, Shipwreck_40, Silvy_40, SkinnyPete_39, Slarp_54, Sonah_38, Soul22_62, Squirty_52, StevieRay_38, StressBall_38, Taquito_54, Techage_38, Tesla_61, Thespis_38, ThetaBob_60, ThulaThula_44, Toron_58, Tortellini_47, VRedHorse_56, VasuNzinga_63, Venti_38, Vidya_38, Willsammy_37, Wintermute_54, XFactor_55, Xavia_47, Xeno_40, Xula_34, Y10_53, Y2_53, Yoshi_68, Zapner_69, Zerg_56, Zilizebeth_38,

Summary by start number:

Start 9:

- Found in 56 of 363 (15.4%) of genes in pham
- Manual Annotations of this start: 52 of 338
- Called 100.0% of time when present
- Phage (with cluster) where this start called: Arib1_38 (P1), Atcoo_38 (P1), Babsiella_40 (I1), Bartholomew_37 (P1), BigNuz_41 (P4), Bogie_40 (P1), Brujita_39 (I1), Brusacoram_38 (P1), Bunnies_38 (P1), CactusJack_38 (P1), Camster_38 (P1), Che9c_54 (I2), Donovan_38 (P1), Dynamo_38 (P1), FirstPlacePfu_38 (P1), Fishburne_38 (P1), Gavriela_38 (P1), Glaske_38 (P1), GreaseLightnin_38 (P1), HC_38 (I1), HUHilltop_38 (P1), Island3_39 (I1), Jebeks_39 (P1), Jung_37 (P1), Juniormint_38 (P1), Kari_38 (P1), KilKor_38 (P1), Ksquared_38 (P1), Langerak_38 (P1), Majeke_38 (P1), Malithi_38 (P1), Mangethe_38 (P1), Megiddo_38 (P1), Nazo_42 (P4), Necropolis_38 (P1), Phalm_38 (P1), Phayonce_40 (P5), Phegasus_38 (P1), Phineas_38 (P1), Polkaroo_38 (P1), Purky_45 (P6), Pygmy_40 (P1), QueenHazel_35 (I1), Shipwreck_40 (P1), Sonah_38 (P1), StevieRay_38 (P1), StressBall_38 (P1), Techage_38 (P1), Thespis_38 (P1), ThulaThula_44 (P5), Venti_38 (P1), Vidya_38 (P1), Willsammy_37 (P1), Xeno_40 (N), Xula_34 (I1), Zilizebeth_38 (P1),

Start 16:

- Found in 13 of 363 (3.6%) of genes in pham
- Manual Annotations of this start: 11 of 338
- Called 100.0% of time when present
- Phage (with cluster) where this start called: Avani_64 (F2), Beakin_58 (F1), Blarby_68 (F), BlueCrab_56 (F1), Bubbles123_53 (F1), Cornie_51 (F5), DoRead_59 (F1), Jabbawokkie_70 (F2), LilSpotty_55 (singleton), Rialto_62 (F1), Royals2015_59 (F1), VRedHorse_56 (F1), Zapner_69 (F2),

Start 17:

- Found in 2 of 363 (0.6%) of genes in pham
- Manual Annotations of this start: 1 of 338
- Called 100.0% of time when present
- Phage (with cluster) where this start called: MooMoo_52 (singleton), Toron_58 (F6),

Start 21:

- Found in 26 of 363 (7.2%) of genes in pham
- Manual Annotations of this start: 17 of 338
- Called 80.8% of time when present
- Phage (with cluster) where this start called: Aggie_40 (N), Aloeri_56 (F1), BabeRuth_46 (N), Bosection6_42 (N), Charlie_41 (N), ChickenDinner_56 (F1), EGUnicorn_44 (N), Frankie_60 (F1), Journey_40 (N), Misha28_53 (F1), Piper2020_55 (F1), Purgamenstris_45 (N), Raymond7_39 (N), Rebel_37 (N), Sejanus_55 (AD), Silvy_40 (N), SkinnyPete_39 (N), Squirty_52 (F3), ThetaBob_60 (F4), TootsiePop_53 (F1), Xavia_47 (P3),

Start 22:

- Found in 195 of 363 (53.7%) of genes in pham
- Manual Annotations of this start: 180 of 338
- Called 96.4% of time when present
- Phage (with cluster) where this start called: Akhila_48 (F1), Alexphander_60 (F1), AlpineSix_61 (F1), ArcusAngelus_59 (F1), Aubs_57 (F1), Awesomesauce_55 (F1), BigPhil_52 (F1), Bipolar_55 (F1), Blexus_54 (F1), BobaPhett_60 (F1), BodEinwohner17_56 (F1), Boomer_61 (F1), Brocalys_51 (F1), Brushbloom_64 (F1), Burwell21_54 (F1), BuzzLyseyear_62 (F1), ByChance_48 (F1), Byougenkin_54 (F1), Cabrinians_57 (F1), CaptainTrips_53 (F1), Cerasum_52 (F1), Chevrolet_62 (F1), Chuckly_59 (F1), Clifton_51 (F1), Coco12_55 (F1), Cornucopia_58 (F1), Crumble_51 (F1), DRBy19_59 (F1), DaWorst_57 (F1), DaddyRickover_55 (F1), Daenerys_50 (F1), Dante_57 (F1), DeadP_62 (F1), Deb65_51 (F1), DillTech15_53 (F1), DirtMcGirt_55 (F1), DocMcStuffins_54 (F1), Donkeykong_60 (F1), Doomphist_56 (F1), DosHalletts_58 (F1), DotProduct_51 (F1), Doug_58 (F1), Drago_54 (F1), Eish_60 (F1), Empress_54 (F1), Enby_57 (F1), Eradicator_49 (F1), Estave1_59 (F1), Fancypants_58 (F1), Fastidio_56 (F1), Firehouse51_57 (F1), Florinda_68 (F1), FreddyB_57 (F1), GUmbie_54 (F1), Galactic_55 (F1), Gandalph_59 (F1), Geralt_51 (F1), GigiOuiOui_52 (F1), Girafales_66 (F1), Girr_54 (F1), Gorge_60 (F1), Grimmer_66 (F1), Guppsters_57 (F1), Hades_57 (F1), Hegedechwino_56 (F1), Hlubikazi_52 (F1), IMPilo_52 (F1), IbOuu_57 (F1), Ihubesi_56 (F1), Inventum_51 (F1), James_60 (F1), Jacob_56 (F1), Jinglebell_61 (F1), Job42_58 (F1), JoeyJr_51 (F1), Juice456_57 (F1), Juniper1_54 (F1), Karhdo_53 (F1), Kersh_58 (F1), Kimberlium_58 (F1), KingMidas_55 (F1), Kingsley_53 (F1), Koella_50 (F1), KristaRAM_59 (F1), LastJedi_50 (F1), Latretium_58 (F1), Leozinho_55 (F1), Leperchaun_48 (F1), LilMoolah_54 (F1), LittleShirley_55 (F1), Lizziana_62 (F1), Llama_61 (F1), Llij_52 (F1), Lorde_56 (F1), LunaBlu_58 (F1), LunaStella_54 (F4),

MadMen_54 (F1), Madiba_54 (F1), Mahavrat_54 (F1), Mandlovu_52 (F1), Mantra_52 (F1), Maravista_57 (F1), Martik_56 (F1), Mattes_60 (F1), MilanaBonita_47 (F1), MilleniumForce_60 (F1), MinionDave_55 (F1), Minnie_60 (F1), MisterCuddles_54 (F1), Modragons_60 (F1), Mova_57 (F1), Mozy_65 (F1), MulchExplorer_62 (F1), Mutaforma13_60 (F1), Nimbo_50 (F1), Nivrat_52 (F1), NormanBulbieJr_56 (F1), Ochi17_59 (F1), OfUltron_61 (F1), Oksu_60 (F1), OldBen_53 (F1), OlympiaSaint_58 (F1), Ovechkin_55 (F1), OwlsT2W_56 (F1), PHappiness_51 (F1), PMC_53 (F1), Pacc40_50 (F1), Phanphagia_54 (F1), Phasih_54 (F1), Phatniss_54 (F1), PhesterPhotato_57 (F1), Philus_59 (F1), Pippy_54 (F1), Plumbus_58 (F1), Poenanya_56 (F1), Polka14_54 (F1), Pollywog_57 (F1), Priscilla_56 (F1), QuickMath_57 (F1), Quico_65 (F1), Radiance_55 (F1), Ramsey_56 (F1), Renaud18_61 (F4), RitaG_51 (F1), Rita_57 (F1), Rockne_57 (F1), Ruby_52 (F1), SG4_53 (F1), Saal_58 (F1), Sabbb_60 (F1), Sarma624_54 (F1), Sassafras_54 (F1), Scottish_54 (F1), Seabastian_61 (F1), Seagreen_56 (F1), Shauna1_55 (F1), ShiLan_55 (F1), ShowerHandel_59 (F1), ShroomBoi_58 (F1), SiSi_54 (F1), SimranZ1_56 (F1), Sparkdehlily_64 (F1), Spartacus_58 (F1), Spikelee_63 (F1), Spoonbill_53 (F1), Squirty_59 (F3), StAnnes_55 (F1), Stap_54 (F1), Starcevich_55 (F1), Strokeseat_52 (F1), SuperGrey_60 (F1), SwagPigglett_61 (F1), TChen_56 (F4), TDanisky_64 (F1), Taj_60 (F1), Tootsieroll_57 (F1), Totinger_55 (F1), Tweety_56 (F1), UncleRicky_55 (F1), Velveteen_51 (F1), Veteran_53 (F1), Vivum_59 (F1), Wachhund_58 (F1), Wee_59 (F1), Whatsapiecost_57 (F1), Whouxphf_53 (F1), Yorick_55 (F1), Zizzle_60 (F1),

Start 23:

- Found in 4 of 363 (1.1%) of genes in pham
- Manual Annotations of this start: 3 of 338
- Called 75.0% of time when present
- Phage (with cluster) where this start called: Che8_61 (F1), EleanorGeorge_57 (F1), Soul22_62 (F2),

Start 24:

- Found in 3 of 363 (0.8%) of genes in pham
- Manual Annotations of this start: 2 of 338
- Called 66.7% of time when present
- Phage (with cluster) where this start called: Che9d_64 (F2), Nitzel_54 (F1),

Start 25:

- Found in 8 of 363 (2.2%) of genes in pham
- Manual Annotations of this start: 3 of 338
- Called 37.5% of time when present
- Phage (with cluster) where this start called: Constella_112 (J), Krakatau_54 (F1), Marker_58 (F1),

Start 26:

- Found in 22 of 363 (6.1%) of genes in pham
- Manual Annotations of this start: 20 of 338
- Called 95.5% of time when present
- Phage (with cluster) where this start called: Boilgate_48 (K8), Chancellor_54 (K4), Cheetobro_54 (K4), Eponine_56 (K4), Fionnbharth_54 (K4), JF1_54 (K4), Juliette_56 (K4), Kraw_55 (K4), Malthus_55 (K4), MissDaisy_52 (K4), Mitti_54 (K4), OmniCritical_53 (K4), Patt_51 (K4), Reptar3000_52 (K4), Ruthiejr_55 (K4), SamScheppers_52 (K4), Slarp_54 (K4), Taquito_54 (K4), Wintermute_54 (K4), Y10_53 (K4), Y2_53 (K4),

Start 27:

- Found in 6 of 363 (1.7%) of genes in pham
- Manual Annotations of this start: 1 of 338
- Called 16.7% of time when present
- Phage (with cluster) where this start called: Demsculpinboyz_66 (F2),

Start 28:

- Found in 10 of 363 (2.8%) of genes in pham
- Manual Annotations of this start: 1 of 338
- Called 20.0% of time when present
- Phage (with cluster) where this start called: MulchSalad_54 (F), Tortellini_47 (P2),

Start 29:

- Found in 26 of 363 (7.2%) of genes in pham
- Manual Annotations of this start: 20 of 338
- Called 84.6% of time when present
- Phage (with cluster) where this start called: Ardmore_49 (F1), Batiatus_55 (F1), Bobi_62 (F1), DLane_52 (F1), Dorothy_54 (F1), Emma_58 (F1), Filuzino_55 (F1), Fruitloop_54 (F1), Hamulus_58 (F1), Kenuha5_54 (F1), Melissauren88_55 (F1), Moonbeam_55 (F1), Ms6_52 (F1), Ogopogo_62 (F1), Phalconet_55 (F1), PopTart_51 (F1), RedBird_54 (F1), RockyHorror_57 (F1), Sandalphon_58 (F1), SassyB_51 (F1), XFactor_55 (F1), Zerg_56 (F1),

Start 30:

- Found in 3 of 363 (0.8%) of genes in pham
- Manual Annotations of this start: 3 of 338
- Called 100.0% of time when present
- Phage (with cluster) where this start called: Harley_59 (F1), JalFarm20_69 (F1), Yoshi_68 (F2),

Start 31:

- Found in 57 of 363 (15.7%) of genes in pham
- Manual Annotations of this start: 5 of 338
- Called 8.8% of time when present
- Phage (with cluster) where this start called: Butters_44 (N), Kevin1_42 (N), MichelleMyBell_41 (N), Philonius_41 (N), Rubeelu_44 (N),

Start 32:

- Found in 32 of 363 (8.8%) of genes in pham
- Manual Annotations of this start: 17 of 338
- Called 59.4% of time when present
- Phage (with cluster) where this start called: Beelzebub_68 (S), Blackbeetle_64 (S), Caprice_59 (S), Clarkson_65 (S), Corazon_62 (S), DS6A_63 (singleton), FeliMaine_66 (S), Gattaca_62 (S), GoongGoong_61 (S), Huphlepuuff_66 (S), JoieB_65 (S), Marvin_60 (S), MosMoris_61 (S), Poise_64 (S), Pringar_63 (S), Raela_64 (S), RedRaider77_63 (S), Tesla_61 (S), VasuNzinga_63 (S),

Start 33:

- Found in 20 of 363 (5.5%) of genes in pham
- Manual Annotations of this start: 1 of 338
- Called 5.0% of time when present
- Phage (with cluster) where this start called: DrLupo_58 (H2),

Start 37:

- Found in 233 of 363 (64.2%) of genes in pham
- Manual Annotations of this start: 1 of 338
- Called 0.4% of time when present
- Phage (with cluster) where this start called: Flathead_57 (F1),

Summary by clusters:

There are 23 clusters represented in this pham: singleton, I2, K4, K8, I1, P5, P2, P3, P1, P6, AD, P4, F, J, N, S, F1, F2, F3, F4, F5, F6, H2,

Info for manual annotations of cluster AD:

- Start number 21 was manually annotated 1 time for cluster AD.

Info for manual annotations of cluster F1:

- Start number 16 was manually annotated 6 times for cluster F1.
- Start number 21 was manually annotated 4 times for cluster F1.
- Start number 22 was manually annotated 176 times for cluster F1.
- Start number 23 was manually annotated 2 times for cluster F1.
- Start number 24 was manually annotated 1 time for cluster F1.
- Start number 25 was manually annotated 2 times for cluster F1.
- Start number 29 was manually annotated 20 times for cluster F1.
- Start number 30 was manually annotated 2 times for cluster F1.
- Start number 37 was manually annotated 1 time for cluster F1.

Info for manual annotations of cluster F2:

- Start number 16 was manually annotated 3 times for cluster F2.
- Start number 23 was manually annotated 1 time for cluster F2.
- Start number 24 was manually annotated 1 time for cluster F2.
- Start number 27 was manually annotated 1 time for cluster F2.
- Start number 30 was manually annotated 1 time for cluster F2.

Info for manual annotations of cluster F3:

- Start number 21 was manually annotated 1 time for cluster F3.
- Start number 22 was manually annotated 1 time for cluster F3.

Info for manual annotations of cluster F4:

- Start number 21 was manually annotated 1 time for cluster F4.
- Start number 22 was manually annotated 3 times for cluster F4.

Info for manual annotations of cluster F5:

- Start number 16 was manually annotated 1 time for cluster F5.

Info for manual annotations of cluster H2:

- Start number 33 was manually annotated 1 time for cluster H2.

Info for manual annotations of cluster I1:

- Start number 9 was manually annotated 6 times for cluster I1.

Info for manual annotations of cluster I2:

- Start number 9 was manually annotated 1 time for cluster I2.

Info for manual annotations of cluster J:

- Start number 25 was manually annotated 1 time for cluster J.

Info for manual annotations of cluster K4:

- Start number 26 was manually annotated 19 times for cluster K4.

Info for manual annotations of cluster K8:

- Start number 26 was manually annotated 1 time for cluster K8.

Info for manual annotations of cluster N:

- Start number 9 was manually annotated 1 time for cluster N.
- Start number 21 was manually annotated 9 times for cluster N.
- Start number 31 was manually annotated 5 times for cluster N.

Info for manual annotations of cluster P1:

- Start number 9 was manually annotated 39 times for cluster P1.

Info for manual annotations of cluster P2:

- Start number 28 was manually annotated 1 time for cluster P2.

Info for manual annotations of cluster P3:

- Start number 21 was manually annotated 1 time for cluster P3.

Info for manual annotations of cluster P4:

- Start number 9 was manually annotated 2 times for cluster P4.

Info for manual annotations of cluster P5:

- Start number 9 was manually annotated 2 times for cluster P5.

Info for manual annotations of cluster P6:

- Start number 9 was manually annotated 1 time for cluster P6.

Info for manual annotations of cluster S:

- Start number 32 was manually annotated 16 times for cluster S.

Gene Information:

Gene: Aggie_40 Start: 29489, Stop: 29848, Start Num: 21

Candidate Starts for Aggie_40:

(Start: 21 @29489 has 17 MA's), (39, 29540), (42, 29555), (49, 29624), (50, 29627), (58, 29693), (66, 29732), (69, 29741), (79, 29786), (80, 29789), (90, 29837), (92, 29843),

Gene: Akhila_48 Start: 35145, Stop: 35492, Start Num: 22

Candidate Starts for Akhila_48:

(Start: 22 @35145 has 180 MA's), (Start: 37 @35184 has 1 MA's), (40, 35193), (49, 35271), (63, 35367), (70, 35388), (80, 35433), (87, 35469),

Gene: Alexphander_60 Start: 39102, Stop: 39449, Start Num: 22

Candidate Starts for Alexphander_60:

(Start: 22 @39102 has 180 MA's), (Start: 37 @39141 has 1 MA's), (49, 39228), (63, 39324), (70, 39345), (80, 39390), (92, 39444),

Gene: Aloeri_56 Start: 37989, Stop: 38351, Start Num: 21

Candidate Starts for Aloeri_56:

(Start: 21 @37989 has 17 MA's), (Start: 22 @37992 has 180 MA's), (Start: 32 @38019 has 17 MA's), (39, 38040), (42, 38055), (46, 38106), (50, 38127), (58, 38193), (80, 38289), (82, 38301), (90, 38340),

Gene: AlpineSix_61 Start: 41221, Stop: 41568, Start Num: 22

Candidate Starts for AlpineSix_61:

(Start: 22 @41221 has 180 MA's), (Start: 37 @41260 has 1 MA's), (44, 41299), (48, 41344), (49, 41347), (63, 41443), (70, 41464), (80, 41509),

Gene: ArcusAngelus_59 Start: 39698, Stop: 40045, Start Num: 22

Candidate Starts for ArcusAngelus_59:

(Start: 22 @39698 has 180 MA's), (Start: 37 @39737 has 1 MA's), (48, 39821), (49, 39824), (63, 39920), (70, 39941), (80, 39986), (92, 40040),

Gene: Ardmore_49 Start: 37243, Stop: 37578, Start Num: 29

Candidate Starts for Ardmore_49:

(Start: 29 @37243 has 20 MA's), (Start: 37 @37270 has 1 MA's), (49, 37357), (63, 37453), (70, 37474), (80, 37519), (87, 37555), (92, 37573),

Gene: Arib1_38 Start: 29810, Stop: 30316, Start Num: 9

Candidate Starts for Arib1_38:

(Start: 9 @29810 has 52 MA's), (Start: 31 @29903 has 5 MA's), (47, 30008), (53, 30053), (96, 30299),

Gene: Atcoo_38 Start: 30284, Stop: 30787, Start Num: 9

Candidate Starts for Atcoo_38:

(2, 30197), (Start: 9 @30284 has 52 MA's), (Start: 31 @30377 has 5 MA's), (47, 30479), (53, 30524), (56, 30539), (96, 30770),

Gene: Aubs_57 Start: 39395, Stop: 39742, Start Num: 22

Candidate Starts for Aubs_57:

(6, 39299), (Start: 22 @39395 has 180 MA's), (Start: 37 @39434 has 1 MA's), (49, 39521), (63, 39617), (70, 39638), (80, 39683), (87, 39719), (92, 39737),

Gene: Avani_64 Start: 39374, Stop: 39766, Start Num: 16

Candidate Starts for Avani_64:

(13, 39362), (Start: 16 @39374 has 11 MA's), (18, 39392), (Start: 27 @39425 has 1 MA's), (Start: 37 @39455 has 1 MA's), (77, 39695), (83, 39725), (91, 39758), (92, 39761),

Gene: Awesomesauce_55 Start: 37254, Stop: 37613, Start Num: 22

Candidate Starts for Awesomesauce_55:

(Start: 21 @37251 has 17 MA's), (Start: 22 @37254 has 180 MA's), (Start: 32 @37281 has 17 MA's), (39, 37302), (42, 37317), (46, 37368), (50, 37389), (58, 37455), (80, 37551), (82, 37563), (90, 37602),

Gene: BabeRuth_46 Start: 31707, Stop: 32066, Start Num: 21

Candidate Starts for BabeRuth_46:

(20, 31704), (Start: 21 @31707 has 17 MA's), (Start: 28 @31722 has 1 MA's), (36, 31749), (42, 31773), (50, 31845), (58, 31911), (69, 31959), (80, 32007), (90, 32055),

Gene: Babsiella_40 Start: 30786, Stop: 31223, Start Num: 9

Candidate Starts for Babsiella_40:

(3, 30729), (Start: 9 @30786 has 52 MA's), (58, 31065), (60, 31077), (80, 31161),

Gene: Bartholomew_37 Start: 29807, Stop: 30310, Start Num: 9

Candidate Starts for Bartholomew_37:

(Start: 9 @29807 has 52 MA's), (Start: 31 @29900 has 5 MA's), (47, 30002), (53, 30047), (96, 30293),

Gene: Batiatus_55 Start: 39111, Stop: 39446, Start Num: 29

Candidate Starts for Batiatus_55:

(Start: 29 @39111 has 20 MA's), (Start: 37 @39138 has 1 MA's), (40, 39147), (49, 39225), (63, 39321), (70, 39342), (80, 39387), (87, 39423), (92, 39441),

Gene: Beakin_58 Start: 38189, Stop: 38581, Start Num: 16

Candidate Starts for Beakin_58:

(Start: 16 @38189 has 11 MA's), (18, 38207), (Start: 37 @38273 has 1 MA's), (49, 38360), (63, 38456), (70, 38477), (80, 38522), (87, 38558), (92, 38576),

Gene: Beelzebub_68 Start: 36994, Stop: 37332, Start Num: 32

Candidate Starts for Beelzebub_68:

(Start: 32 @36994 has 17 MA's), (52, 37120), (58, 37159), (82, 37276), (89, 37312), (92, 37321),

Gene: BigNuz_41 Start: 31916, Stop: 32428, Start Num: 9

Candidate Starts for BigNuz_41:

(Start: 9 @31916 has 52 MA's), (Start: 31 @32009 has 5 MA's), (41, 32048), (53, 32162), (56, 32177), (59, 32198), (81, 32297), (97, 32417),

Gene: BigPhil_52 Start: 34814, Stop: 35161, Start Num: 22

Candidate Starts for BigPhil_52:

(Start: 22 @34814 has 180 MA's), (Start: 37 @34853 has 1 MA's), (44, 34892), (48, 34937), (49, 34940), (63, 35036), (80, 35102),

Gene: Bipolar_55 Start: 38855, Stop: 39202, Start Num: 22

Candidate Starts for Bipolar_55:

(Start: 22 @38855 has 180 MA's), (Start: 37 @38894 has 1 MA's), (40, 38903), (49, 38981), (63, 39077), (70, 39098), (80, 39143), (87, 39179), (92, 39197),

Gene: Blackbeetle_64 Start: 36039, Stop: 36377, Start Num: 32

Candidate Starts for Blackbeetle_64:

(Start: 32 @36039 has 17 MA's), (52, 36165), (58, 36204), (82, 36321), (89, 36357), (92, 36366),

Gene: Blarby_68 Start: 40472, Stop: 40861, Start Num: 16

Candidate Starts for Blarby_68:

(13, 40460), (Start: 16 @40472 has 11 MA's), (18, 40490), (Start: 27 @40523 has 1 MA's), (Start: 37 @40553 has 1 MA's), (80, 40802), (83, 40820), (91, 40853), (92, 40856),

Gene: Blexus_54 Start: 39072, Stop: 39419, Start Num: 22

Candidate Starts for Blexus_54:

(4, 38952), (7, 38982), (Start: 22 @39072 has 180 MA's), (Start: 37 @39111 has 1 MA's), (44, 39150), (48, 39195), (49, 39198), (63, 39294), (69, 39312), (70, 39315), (74, 39339), (79, 39357), (80, 39360),

Gene: BlueCrab_56 Start: 39335, Stop: 39727, Start Num: 16

Candidate Starts for BlueCrab_56:

(Start: 16 @39335 has 11 MA's), (18, 39353), (Start: 37 @39419 has 1 MA's), (49, 39506), (63, 39602), (80, 39668),

Gene: BobaPhett_60 Start: 41331, Stop: 41678, Start Num: 22

Candidate Starts for BobaPhett_60:

(6, 41235), (7, 41241), (Start: 22 @41331 has 180 MA's), (Start: 37 @41370 has 1 MA's), (44, 41409), (48, 41454), (49, 41457), (63, 41553), (80, 41619), (92, 41673),

Gene: Bobi_62 Start: 40720, Stop: 41055, Start Num: 29

Candidate Starts for Bobi_62:

(Start: 29 @40720 has 20 MA's), (Start: 37 @40747 has 1 MA's), (49, 40834), (63, 40930), (70, 40951), (80, 40996), (87, 41032), (92, 41050),

Gene: BodEinwohner17_56 Start: 38142, Stop: 38489, Start Num: 22

Candidate Starts for BodEinwohner17_56:

(Start: 22 @38142 has 180 MA's), (Start: 37 @38181 has 1 MA's), (44, 38220), (48, 38265), (49, 38268), (63, 38364), (69, 38382), (70, 38385), (74, 38409), (79, 38427), (80, 38430),

Gene: Bogie_40 Start: 31583, Stop: 32086, Start Num: 9

Candidate Starts for Bogie_40:

(2, 31496), (Start: 9 @31583 has 52 MA's), (Start: 31 @31676 has 5 MA's), (47, 31778), (53, 31823), (96, 32069),

Gene: Boilgate_48 Start: 37518, Stop: 37862, Start Num: 26

Candidate Starts for Boilgate_48:

(Start: 26 @37518 has 20 MA's), (68, 37749), (80, 37803), (86, 37839), (89, 37851),

Gene: Boomer_61 Start: 41006, Stop: 41353, Start Num: 22

Candidate Starts for Boomer_61:

(6, 40910), (Start: 22 @41006 has 180 MA's), (Start: 37 @41045 has 1 MA's), (48, 41129), (49, 41132), (63, 41228), (70, 41249), (80, 41294), (92, 41348),

Gene: Bosection6_42 Start: 29385, Stop: 29744, Start Num: 21

Candidate Starts for Bosection6_42:

(Start: 21 @29385 has 17 MA's), (Start: 32 @29415 has 17 MA's), (42, 29451), (50, 29523), (58, 29589), (60, 29601), (66, 29628), (69, 29637), (80, 29685), (90, 29733), (92, 29739),

Gene: Brocalys_51 Start: 35516, Stop: 35863, Start Num: 22

Candidate Starts for Brocalys_51:

(6, 35420), (Start: 22 @35516 has 180 MA's), (Start: 37 @35555 has 1 MA's), (48, 35639), (49, 35642), (63, 35738), (80, 35804), (92, 35858),

Gene: Brujita_39 Start: 31520, Stop: 31951, Start Num: 9

Candidate Starts for Brujita_39:

(Start: 9 @31520 has 52 MA's), (Start: 31 @31613 has 5 MA's), (39, 31643), (58, 31793), (60, 31805), (80, 31889),

Gene: Brusacoram_38 Start: 29790, Stop: 30293, Start Num: 9

Candidate Starts for Brusacoram_38:

(2, 29703), (Start: 9 @29790 has 52 MA's), (Start: 31 @29883 has 5 MA's), (47, 29985), (53, 30030), (56, 30045), (96, 30276),

Gene: Brushbloom_64 Start: 40031, Stop: 40378, Start Num: 22

Candidate Starts for Brushbloom_64:

(Start: 22 @40031 has 180 MA's), (Start: 37 @40070 has 1 MA's), (40, 40079), (49, 40157), (63, 40253), (80, 40319), (92, 40373),

Gene: Bubbles123_53 Start: 38975, Stop: 39367, Start Num: 16

Candidate Starts for Bubbles123_53:

(13, 38963), (Start: 16 @38975 has 11 MA's), (18, 38993), (Start: 26 @39029 has 20 MA's), (Start: 37 @39059 has 1 MA's), (49, 39146), (63, 39242), (70, 39263), (80, 39308), (87, 39344), (92, 39362),

Gene: Bunnies_38 Start: 29814, Stop: 30317, Start Num: 9

Candidate Starts for Bunnies_38:

(2, 29727), (Start: 9 @29814 has 52 MA's), (Start: 31 @29907 has 5 MA's), (47, 30009), (53, 30054), (91, 30228), (96, 30300),

Gene: Burwell21_54 Start: 38614, Stop: 38961, Start Num: 22

Candidate Starts for Burwell21_54:

(6, 38518), (Start: 22 @38614 has 180 MA's), (Start: 37 @38653 has 1 MA's), (48, 38737), (49, 38740), (63, 38836), (80, 38902), (92, 38956),

Gene: Butters_44 Start: 31386, Stop: 31709, Start Num: 31

Candidate Starts for Butters_44:

(15, 31326), (19, 31362), (Start: 31 @31386 has 5 MA's), (35, 31404), (43, 31446), (57, 31554), (59, 31563), (71, 31629), (75, 31635), (81, 31662),

Gene: BuzzLyseyear_62 Start: 40038, Stop: 40385, Start Num: 22

Candidate Starts for BuzzLyseyear_62:

(Start: 22 @40038 has 180 MA's), (Start: 37 @40077 has 1 MA's), (40, 40086), (49, 40164), (63, 40260), (70, 40281), (80, 40326), (87, 40362), (92, 40380),

Gene: ByChance_48 Start: 34305, Stop: 34652, Start Num: 22

Candidate Starts for ByChance_48:

(4, 34185), (7, 34215), (Start: 22 @34305 has 180 MA's), (Start: 37 @34344 has 1 MA's), (48, 34428), (49, 34431), (63, 34527), (80, 34593),

Gene: Byougenkin_54 Start: 38377, Stop: 38727, Start Num: 22

Candidate Starts for Byougenkin_54:

(4, 38257), (7, 38287), (Start: 22 @38377 has 180 MA's), (Start: 37 @38416 has 1 MA's), (44, 38455), (48, 38500), (49, 38503), (63, 38599), (69, 38617), (70, 38620), (74, 38644), (79, 38662), (80, 38665), (92, 38719), (93, 38722),

Gene: Cabrinians_57 Start: 38692, Stop: 39039, Start Num: 22

Candidate Starts for Cabrinians_57:

(6, 38596), (Start: 22 @38692 has 180 MA's), (Start: 37 @38731 has 1 MA's), (48, 38815), (49, 38818), (63, 38914), (80, 38980), (92, 39034),

Gene: CactusJack_38 Start: 30054, Stop: 30557, Start Num: 9

Candidate Starts for CactusJack_38:

(2, 29967), (Start: 9 @30054 has 52 MA's), (Start: 31 @30147 has 5 MA's), (47, 30249), (53, 30294), (91, 30468), (96, 30540),

Gene: Camster_38 Start: 29830, Stop: 30333, Start Num: 9

Candidate Starts for Camster_38:

(2, 29743), (Start: 9 @29830 has 52 MA's), (Start: 31 @29923 has 5 MA's), (47, 30025), (53, 30070), (96, 30316),

Gene: Caprice_59 Start: 36353, Stop: 36691, Start Num: 32

Candidate Starts for Caprice_59:

(Start: 32 @36353 has 17 MA's), (52, 36479), (58, 36518), (82, 36635), (89, 36671), (92, 36680),

Gene: CaptainTrips_53 Start: 38188, Stop: 38535, Start Num: 22

Candidate Starts for CaptainTrips_53:

(Start: 22 @38188 has 180 MA's), (Start: 37 @38227 has 1 MA's), (40, 38236), (49, 38314), (63, 38410), (70, 38431), (80, 38476), (87, 38512), (92, 38530),

Gene: Cerasum_52 Start: 34832, Stop: 35179, Start Num: 22

Candidate Starts for Cerasum_52:

(Start: 22 @34832 has 180 MA's), (Start: 37 @34871 has 1 MA's), (44, 34910), (48, 34955), (49, 34958), (63, 35054), (80, 35120),

Gene: Chancellor_54 Start: 37618, Stop: 37968, Start Num: 26

Candidate Starts for Chancellor_54:

(Start: 26 @37618 has 20 MA's), (Start: 33 @37642 has 1 MA's), (34, 37645), (45, 37720), (52, 37759), (58, 37804), (61, 37822), (64, 37843), (66, 37846),

Gene: Charlie_41 Start: 29383, Stop: 29745, Start Num: 21

Candidate Starts for Charlie_41:

(Start: 21 @29383 has 17 MA's), (Start: 22 @29386 has 180 MA's), (Start: 32 @29413 has 17 MA's), (39, 29434), (42, 29449), (46, 29500), (50, 29521), (58, 29587), (80, 29683), (82, 29695), (90, 29734),

Gene: Che8_61 Start: 41323, Stop: 41667, Start Num: 23

Candidate Starts for Che8_61:

(8, 41236), (Start: 23 @41323 has 3 MA's), (Start: 37 @41356 has 1 MA's), (77, 41596), (83, 41626), (91, 41659), (92, 41662),

Gene: Che9c_54 Start: 41194, Stop: 41610, Start Num: 9

Candidate Starts for Che9c_54:

(Start: 9 @41194 has 52 MA's), (Start: 31 @41287 has 5 MA's), (39, 41317), (50, 41398), (52, 41416), (57, 41455), (59, 41464), (81, 41563),

Gene: Che9d_64 Start: 38405, Stop: 38749, Start Num: 24

Candidate Starts for Che9d_64:

(Start: 24 @38405 has 2 MA's), (Start: 27 @38411 has 1 MA's), (Start: 37 @38438 has 1 MA's), (77, 38678), (83, 38708), (91, 38741), (92, 38744),

Gene: Cheetobro_54 Start: 37615, Stop: 37965, Start Num: 26

Candidate Starts for Cheetobro_54:

(Start: 26 @37615 has 20 MA's), (Start: 33 @37639 has 1 MA's), (34, 37642), (45, 37717), (52, 37756), (58, 37801), (61, 37819), (64, 37840), (66, 37843),

Gene: Chevrolet_62 Start: 39699, Stop: 40046, Start Num: 22

Candidate Starts for Chevrolet_62:

(Start: 22 @39699 has 180 MA's), (Start: 37 @39738 has 1 MA's), (48, 39822), (49, 39825), (63, 39921), (70, 39942), (80, 39987), (92, 40041),

Gene: ChickenDinner_56 Start: 37989, Stop: 38351, Start Num: 21

Candidate Starts for ChickenDinner_56:

(Start: 21 @37989 has 17 MA's), (Start: 22 @37992 has 180 MA's), (Start: 32 @38019 has 17 MA's), (39, 38040), (42, 38055), (46, 38106), (50, 38127), (58, 38193), (80, 38289), (82, 38301), (90, 38340),

Gene: Chuckly_59 Start: 39334, Stop: 39681, Start Num: 22

Candidate Starts for Chuckly_59:

(6, 39238), (7, 39244), (Start: 22 @39334 has 180 MA's), (Start: 37 @39373 has 1 MA's), (44, 39412), (48, 39457), (49, 39460), (63, 39556), (80, 39622), (92, 39676),

Gene: Clarkson_65 Start: 36722, Stop: 37060, Start Num: 32

Candidate Starts for Clarkson_65:

(Start: 32 @36722 has 17 MA's), (52, 36848), (58, 36887), (82, 37004), (89, 37040), (92, 37049),

Gene: Clifton_51 Start: 35867, Stop: 36214, Start Num: 22

Candidate Starts for Clifton_51:

(6, 35771), (Start: 22 @35867 has 180 MA's), (Start: 37 @35906 has 1 MA's), (48, 35990), (49, 35993), (63, 36089), (80, 36155), (92, 36209),

Gene: Coco12_55 Start: 38889, Stop: 39236, Start Num: 22

Candidate Starts for Coco12_55:

(Start: 22 @38889 has 180 MA's), (Start: 37 @38928 has 1 MA's), (44, 38967), (48, 39012), (49, 39015), (63, 39111), (80, 39177),

Gene: Constella_112 Start: 64955, Stop: 65296, Start Num: 25

Candidate Starts for Constella_112:

(Start: 25 @64955 has 3 MA's), (Start: 29 @64961 has 20 MA's), (Start: 37 @64988 has 1 MA's), (44, 65027), (48, 65072), (49, 65075), (63, 65171), (70, 65192), (80, 65237), (87, 65273), (92, 65291),

Gene: Corazon_62 Start: 36916, Stop: 37254, Start Num: 32

Candidate Starts for Corazon_62:

(Start: 32 @36916 has 17 MA's), (52, 37042), (58, 37081), (82, 37198), (89, 37234), (92, 37243),

Gene: Cornie_51 Start: 36858, Stop: 37253, Start Num: 16

Candidate Starts for Cornie_51:

(Start: 16 @36858 has 11 MA's), (18, 36876), (Start: 37 @36942 has 1 MA's), (77, 37182), (83, 37212), (91, 37245), (92, 37248),

Gene: Cornucopia_58 Start: 39344, Stop: 39694, Start Num: 22

Candidate Starts for Cornucopia_58:

(Start: 22 @39344 has 180 MA's), (Start: 37 @39383 has 1 MA's), (77, 39623), (83, 39653), (91, 39686), (92, 39689),

Gene: Crumble_51 Start: 34628, Stop: 34975, Start Num: 22

Candidate Starts for Crumble_51:

(6, 34532), (Start: 22 @34628 has 180 MA's), (Start: 37 @34667 has 1 MA's), (48, 34751), (49, 34754), (63, 34850), (80, 34916), (92, 34970),

Gene: DLane_52 Start: 37767, Stop: 38102, Start Num: 29

Candidate Starts for DLane_52:

(Start: 29 @37767 has 20 MA's), (Start: 37 @37794 has 1 MA's), (49, 37881), (63, 37977), (70, 37998), (80, 38043), (87, 38079), (92, 38097),

Gene: DRBy19_59 Start: 39792, Stop: 40139, Start Num: 22

Candidate Starts for DRBy19_59:

(4, 39672), (7, 39702), (Start: 22 @39792 has 180 MA's), (Start: 37 @39831 has 1 MA's), (40, 39840), (48, 39915), (49, 39918), (63, 40014), (80, 40080),

Gene: DS6A_63 Start: 41803, Stop: 42168, Start Num: 32

Candidate Starts for DS6A_63:

(12, 41713), (Start: 23 @41773 has 3 MA's), (Start: 32 @41803 has 17 MA's), (50, 41902), (55, 41944), (58, 41965), (62, 41989), (65, 42004), (83, 42079), (94, 42151), (95, 42157),

Gene: DaWorst_57 Start: 39093, Stop: 39440, Start Num: 22

Candidate Starts for DaWorst_57:

(Start: 22 @39093 has 180 MA's), (Start: 37 @39132 has 1 MA's), (40, 39141), (49, 39219), (63, 39315), (80, 39381), (92, 39435),

Gene: DaddyRickover_55 Start: 38831, Stop: 39178, Start Num: 22

Candidate Starts for DaddyRickover_55:

(6, 38735), (7, 38741), (Start: 22 @38831 has 180 MA's), (Start: 37 @38870 has 1 MA's), (48, 38954), (49, 38957), (63, 39053), (80, 39119),

Gene: Daenerys_50 Start: 36947, Stop: 37294, Start Num: 22

Candidate Starts for Daenerys_50:

(6, 36851), (Start: 22 @36947 has 180 MA's), (Start: 37 @36986 has 1 MA's), (48, 37070), (49, 37073), (63, 37169), (70, 37190), (80, 37235), (92, 37289),

Gene: Dante_57 Start: 38616, Stop: 38963, Start Num: 22

Candidate Starts for Dante_57:

(Start: 22 @38616 has 180 MA's), (Start: 37 @38655 has 1 MA's), (44, 38694), (48, 38739), (49, 38742), (63, 38838), (80, 38904), (92, 38958),

Gene: DeadP_62 Start: 41268, Stop: 41615, Start Num: 22

Candidate Starts for DeadP_62:

(4, 41148), (Start: 22 @41268 has 180 MA's), (Start: 37 @41307 has 1 MA's), (44, 41346), (48, 41391), (49, 41394), (63, 41490), (70, 41511), (80, 41556), (87, 41592), (92, 41610),

Gene: Deb65_51 Start: 36916, Stop: 37263, Start Num: 22

Candidate Starts for Deb65_51:

(6, 36820), (Start: 22 @36916 has 180 MA's), (Start: 37 @36955 has 1 MA's), (48, 37039), (49, 37042), (63, 37138), (70, 37159), (80, 37204), (92, 37258),

Gene: Demsculpinboyz_66 Start: 38415, Stop: 38750, Start Num: 27

Candidate Starts for Demsculpinboyz_66:

(Start: 24 @38409 has 2 MA's), (Start: 27 @38415 has 1 MA's), (Start: 37 @38442 has 1 MA's), (70, 38646), (83, 38709), (91, 38742), (92, 38745),

Gene: DillTech15_53 Start: 37281, Stop: 37628, Start Num: 22

Candidate Starts for DillTech15_53:

(6, 37185), (Start: 22 @37281 has 180 MA's), (Start: 37 @37320 has 1 MA's), (49, 37407), (63, 37503), (70, 37524), (80, 37569), (87, 37605), (92, 37623),

Gene: DirtMcgirt_55 Start: 37356, Stop: 37703, Start Num: 22

Candidate Starts for DirtMcgirt_55:

(6, 37260), (7, 37266), (Start: 22 @37356 has 180 MA's), (Start: 37 @37395 has 1 MA's), (48, 37479), (49, 37482), (63, 37578),

Gene: DoRead_59 Start: 37770, Stop: 38162, Start Num: 16

Candidate Starts for DoRead_59:

(Start: 16 @37770 has 11 MA's), (18, 37788), (Start: 37 @37854 has 1 MA's), (70, 38058), (83, 38121), (91, 38154), (92, 38157),

Gene: DocMcStuffins_54 Start: 37992, Stop: 38351, Start Num: 22

Candidate Starts for DocMcStuffins_54:

(Start: 21 @37989 has 17 MA's), (Start: 22 @37992 has 180 MA's), (Start: 32 @38019 has 17 MA's), (39, 38040), (42, 38055), (46, 38106), (50, 38127), (58, 38193), (80, 38289), (82, 38301), (90, 38340),

Gene: Donkeykong_60 Start: 41650, Stop: 41997, Start Num: 22

Candidate Starts for Donkeykong_60:

(Start: 22 @41650 has 180 MA's), (Start: 37 @41689 has 1 MA's), (40, 41698), (49, 41776), (63, 41872), (70, 41893), (80, 41938), (87, 41974),

Gene: Donovan_38 Start: 29827, Stop: 30333, Start Num: 9

Candidate Starts for Donovan_38:

(Start: 9 @29827 has 52 MA's), (Start: 31 @29920 has 5 MA's), (47, 30025), (53, 30070), (96, 30316),

Gene: Doomphist_56 Start: 39792, Stop: 40139, Start Num: 22

Candidate Starts for Doomphist_56:

(Start: 22 @39792 has 180 MA's), (Start: 37 @39831 has 1 MA's), (44, 39870), (48, 39915), (49, 39918), (63, 40014), (69, 40032), (70, 40035), (74, 40059), (79, 40077), (80, 40080),

Gene: Dorothy_54 Start: 38023, Stop: 38358, Start Num: 29

Candidate Starts for Dorothy_54:

(Start: 29 @38023 has 20 MA's), (Start: 37 @38050 has 1 MA's), (49, 38137), (63, 38233), (70, 38254), (80, 38299), (92, 38353),

Gene: DosHalletts_58 Start: 40147, Stop: 40494, Start Num: 22

Candidate Starts for DosHalletts_58:

(Start: 22 @40147 has 180 MA's), (Start: 37 @40186 has 1 MA's), (40, 40195), (49, 40273), (63, 40369), (70, 40390), (80, 40435), (92, 40489),

Gene: DotProduct_51 Start: 37410, Stop: 37757, Start Num: 22

Candidate Starts for DotProduct_51:

(4, 37290), (Start: 22 @37410 has 180 MA's), (Start: 37 @37449 has 1 MA's), (44, 37488), (48, 37533), (49, 37536), (63, 37632), (69, 37650), (70, 37653), (74, 37677), (79, 37695), (80, 37698),

Gene: Doug_58 Start: 39359, Stop: 39706, Start Num: 22

Candidate Starts for Doug_58:

(Start: 22 @39359 has 180 MA's), (Start: 37 @39398 has 1 MA's), (40, 39407), (49, 39485), (63, 39581), (80, 39647), (92, 39701),

Gene: DrLupo_58 Start: 42483, Stop: 42806, Start Num: 33

Candidate Starts for DrLupo_58:

(Start: 33 @42483 has 1 MA's), (54, 42624), (58, 42648), (60, 42660), (62, 42675), (70, 42705), (72, 42720), (78, 42738),

Gene: Drago_54 Start: 37359, Stop: 37706, Start Num: 22

Candidate Starts for Drago_54:

(6, 37263), (7, 37269), (Start: 22 @37359 has 180 MA's), (Start: 37 @37398 has 1 MA's), (48, 37482), (49, 37485), (63, 37581),

Gene: Dynamo_38 Start: 30215, Stop: 30718, Start Num: 9

Candidate Starts for Dynamo_38:

(Start: 9 @30215 has 52 MA's), (Start: 31 @30308 has 5 MA's), (47, 30410), (53, 30455), (96, 30701),

Gene: EGUunicorn_44 Start: 29430, Stop: 29789, Start Num: 21

Candidate Starts for EGUunicorn_44:

(Start: 21 @29430 has 17 MA's), (Start: 32 @29460 has 17 MA's), (42, 29496), (50, 29568), (58, 29634), (60, 29646), (66, 29673), (69, 29682), (80, 29730), (90, 29778), (92, 29784),

Gene: Eish_60 Start: 39608, Stop: 39955, Start Num: 22

Candidate Starts for Eish_60:

(Start: 22 @39608 has 180 MA's), (Start: 37 @39647 has 1 MA's), (49, 39734), (63, 39830), (80, 39896),

Gene: EleanorGeorge_57 Start: 39477, Stop: 39821, Start Num: 23

Candidate Starts for EleanorGeorge_57:

(8, 39390), (Start: 23 @39477 has 3 MA's), (Start: 37 @39510 has 1 MA's), (77, 39750), (83, 39780), (91, 39813), (92, 39816),

Gene: Emma_58 Start: 38779, Stop: 39114, Start Num: 29

Candidate Starts for Emma_58:

(Start: 29 @38779 has 20 MA's), (Start: 37 @38806 has 1 MA's), (49, 38893), (63, 38989), (70, 39010), (80, 39055), (87, 39091), (92, 39109),

Gene: Empress_54 Start: 38361, Stop: 38708, Start Num: 22

Candidate Starts for Empress_54:

(Start: 22 @38361 has 180 MA's), (Start: 37 @38400 has 1 MA's), (44, 38439), (48, 38484), (49, 38487), (63, 38583), (69, 38601), (70, 38604), (74, 38628), (79, 38646), (80, 38649),

Gene: Enby_57 Start: 37635, Stop: 37982, Start Num: 22

Candidate Starts for Enby_57:

(Start: 22 @37635 has 180 MA's), (Start: 37 @37674 has 1 MA's), (40, 37683), (49, 37761), (63, 37857), (70, 37878), (80, 37923), (87, 37959), (92, 37977),

Gene: Eponine_56 Start: 38452, Stop: 38805, Start Num: 26

Candidate Starts for Eponine_56:

(Start: 26 @38452 has 20 MA's), (34, 38479), (45, 38554), (52, 38593), (58, 38641), (61, 38659), (64, 38680), (66, 38683),

Gene: Eradicator_49 Start: 36888, Stop: 37235, Start Num: 22

Candidate Starts for Eradicator_49:

(Start: 22 @36888 has 180 MA's), (Start: 37 @36927 has 1 MA's), (40, 36936), (49, 37014), (63, 37110), (70, 37131), (80, 37176), (87, 37212), (92, 37230),

Gene: Estave1_59 Start: 39812, Stop: 40159, Start Num: 22

Candidate Starts for Estave1_59:

(6, 39716), (Start: 22 @39812 has 180 MA's), (Start: 37 @39851 has 1 MA's), (48, 39935), (49, 39938), (63, 40034), (80, 40100), (92, 40154),

Gene: Fancypants_58 Start: 39326, Stop: 39673, Start Num: 22

Candidate Starts for Fancypants_58:

(4, 39206), (7, 39236), (10, 39257), (Start: 22 @39326 has 180 MA's), (Start: 37 @39365 has 1 MA's), (48, 39449), (49, 39452), (63, 39548), (70, 39569), (80, 39614), (87, 39650), (92, 39668),

Gene: Fastidio_56 Start: 37428, Stop: 37775, Start Num: 22

Candidate Starts for Fastidio_56:

(6, 37332), (Start: 22 @37428 has 180 MA's), (Start: 37 @37467 has 1 MA's), (49, 37554), (63, 37650), (70, 37671), (80, 37716), (87, 37752), (92, 37770),

Gene: FeliMaine_66 Start: 36964, Stop: 37302, Start Num: 32

Candidate Starts for FeliMaine_66:

(Start: 32 @36964 has 17 MA's), (52, 37090), (58, 37129), (82, 37246), (89, 37282), (92, 37291),

Gene: Filuzino_55 Start: 38069, Stop: 38404, Start Num: 29

Candidate Starts for Filuzino_55:

(Start: 29 @38069 has 20 MA's), (Start: 37 @38096 has 1 MA's), (49, 38183), (63, 38279), (70, 38300), (80, 38345), (87, 38381), (92, 38399),

Gene: Fionnbharth_54 Start: 37850, Stop: 38203, Start Num: 26

Candidate Starts for Fionnbharth_54:

(Start: 26 @37850 has 20 MA's), (Start: 33 @37874 has 1 MA's), (34, 37877), (45, 37952), (52, 37991), (58, 38039), (61, 38057), (64, 38078), (66, 38081),

Gene: Firehouse51_57 Start: 42210, Stop: 42557, Start Num: 22

Candidate Starts for Firehouse51_57:

(4, 42090), (Start: 22 @42210 has 180 MA's), (Start: 37 @42249 has 1 MA's), (44, 42288), (48, 42333), (49, 42336), (63, 42432), (69, 42450), (70, 42453), (74, 42477), (79, 42495), (80, 42498),

Gene: FirstPlacePfu_38 Start: 29839, Stop: 30342, Start Num: 9

Candidate Starts for FirstPlacePfu_38:

(Start: 9 @29839 has 52 MA's), (Start: 31 @29932 has 5 MA's), (47, 30034), (53, 30079), (96, 30325),

Gene: Fishburne_38 Start: 29807, Stop: 30310, Start Num: 9

Candidate Starts for Fishburne_38:

(Start: 9 @29807 has 52 MA's), (Start: 31 @29900 has 5 MA's), (47, 30002), (53, 30047), (96, 30293),

Gene: Flathead_57 Start: 39563, Stop: 39871, Start Num: 37

Candidate Starts for Flathead_57:

(Start: 29 @39536 has 20 MA's), (Start: 37 @39563 has 1 MA's), (49, 39650), (63, 39746), (70, 39767), (80, 39812), (87, 39848), (92, 39866),

Gene: Florinda_68 Start: 41148, Stop: 41495, Start Num: 22

Candidate Starts for Florinda_68:

(4, 41028), (10, 41079), (Start: 22 @41148 has 180 MA's), (Start: 37 @41187 has 1 MA's), (48, 41271), (49, 41274), (63, 41370), (70, 41391), (80, 41436), (92, 41490),

Gene: Frankie_60 Start: 40470, Stop: 40832, Start Num: 21

Candidate Starts for Frankie_60:

(Start: 21 @40470 has 17 MA's), (Start: 25 @40479 has 3 MA's), (Start: 28 @40485 has 1 MA's), (39, 40521), (42, 40536), (46, 40587), (50, 40608), (58, 40674), (80, 40770), (82, 40782), (90, 40821),

Gene: FreddyB_57 Start: 37540, Stop: 37887, Start Num: 22

Candidate Starts for FreddyB_57:

(6, 37444), (Start: 22 @37540 has 180 MA's), (Start: 37 @37579 has 1 MA's), (48, 37663), (49, 37666), (63, 37762), (80, 37828), (92, 37882),

Gene: Fruitloop_54 Start: 39383, Stop: 39718, Start Num: 29

Candidate Starts for Fruitloop_54:

(Start: 29 @39383 has 20 MA's), (Start: 37 @39410 has 1 MA's), (49, 39497), (63, 39593), (70, 39614), (80, 39659), (87, 39695), (92, 39713),

Gene: GUmbie_54 Start: 38115, Stop: 38462, Start Num: 22

Candidate Starts for GUmbie_54:

(Start: 22 @38115 has 180 MA's), (Start: 37 @38154 has 1 MA's), (40, 38163), (49, 38241), (63, 38337), (70, 38358), (80, 38403), (87, 38439), (92, 38457),

Gene: Galactic_55 Start: 38581, Stop: 38928, Start Num: 22

Candidate Starts for Galactic_55:

(4, 38461), (7, 38491), (10, 38512), (Start: 22 @38581 has 180 MA's), (Start: 37 @38620 has 1 MA's), (48, 38704), (49, 38707), (63, 38803), (70, 38824), (80, 38869), (87, 38905), (92, 38923),

Gene: Gandalph_59 Start: 38933, Stop: 39283, Start Num: 22

Candidate Starts for Gandalph_59:

(Start: 22 @38933 has 180 MA's), (Start: 37 @38972 has 1 MA's), (77, 39212), (83, 39242), (91, 39275), (92, 39278),

Gene: Gattaca_62 Start: 36143, Stop: 36481, Start Num: 32

Candidate Starts for Gattaca_62:

(Start: 32 @36143 has 17 MA's), (52, 36269), (58, 36308), (82, 36425), (89, 36461), (92, 36470),

Gene: Gavriela_38 Start: 30054, Stop: 30557, Start Num: 9

Candidate Starts for Gavriela_38:

(2, 29967), (Start: 9 @30054 has 52 MA's), (Start: 31 @30147 has 5 MA's), (47, 30249), (53, 30294), (91, 30468), (96, 30540),

Gene: Geralt_51 Start: 36915, Stop: 37262, Start Num: 22

Candidate Starts for Geralt_51:

(6, 36819), (Start: 22 @36915 has 180 MA's), (Start: 37 @36954 has 1 MA's), (48, 37038), (49, 37041), (63, 37137), (70, 37158), (80, 37203), (92, 37257),

Gene: GigiOuiOui_52 Start: 37555, Stop: 37902, Start Num: 22

Candidate Starts for GigiOuiOui_52:

(Start: 22 @37555 has 180 MA's), (Start: 37 @37594 has 1 MA's), (40, 37603), (49, 37681), (63, 37777), (70, 37798), (80, 37843), (92, 37897),

Gene: Girafales_66 Start: 40939, Stop: 41286, Start Num: 22

Candidate Starts for Girafales_66:

(4, 40819), (7, 40849), (10, 40870), (Start: 22 @40939 has 180 MA's), (Start: 37 @40978 has 1 MA's), (48, 41062), (49, 41065), (63, 41161), (70, 41182), (80, 41227), (92, 41281),

Gene: Girr_54 Start: 38422, Stop: 38769, Start Num: 22

Candidate Starts for Girr_54:

(4, 38299), (10, 38350), (Start: 22 @38422 has 180 MA's), (Start: 37 @38461 has 1 MA's), (40, 38470), (44, 38500), (49, 38548), (63, 38644), (70, 38665), (80, 38710), (87, 38746), (92, 38764),

Gene: Glaske_38 Start: 30054, Stop: 30557, Start Num: 9

Candidate Starts for Glaske_38:

(2, 29967), (Start: 9 @30054 has 52 MA's), (Start: 31 @30147 has 5 MA's), (47, 30249), (53, 30294), (91, 30468), (96, 30540),

Gene: GoongGoong_61 Start: 35942, Stop: 36280, Start Num: 32

Candidate Starts for GoongGoong_61:

(Start: 32 @35942 has 17 MA's), (52, 36068), (58, 36107), (82, 36224), (89, 36260), (92, 36269),

Gene: Gorge_60 Start: 40057, Stop: 40404, Start Num: 22

Candidate Starts for Gorge_60:

(6, 39961), (Start: 22 @40057 has 180 MA's), (Start: 37 @40096 has 1 MA's), (48, 40180), (49, 40183), (63, 40279), (80, 40345), (92, 40399),

Gene: GreaseLightnin_38 Start: 30043, Stop: 30546, Start Num: 9

Candidate Starts for GreaseLightnin_38:

(2, 29956), (Start: 9 @30043 has 52 MA's), (Start: 31 @30136 has 5 MA's), (47, 30238), (53, 30283), (56, 30298), (96, 30529),

Gene: Grimmer_66 Start: 40217, Stop: 40564, Start Num: 22

Candidate Starts for Grimmer_66:

(Start: 22 @40217 has 180 MA's), (Start: 37 @40256 has 1 MA's), (48, 40340), (49, 40343), (63, 40439), (70, 40460), (80, 40505), (87, 40541), (92, 40559),

Gene: Guppsters_57 Start: 38245, Stop: 38592, Start Num: 22

Candidate Starts for Guppsters_57:

(Start: 22 @38245 has 180 MA's), (Start: 37 @38284 has 1 MA's), (40, 38293), (48, 38368), (49, 38371), (63, 38467), (80, 38533), (92, 38587),

Gene: HC_38 Start: 29567, Stop: 30004, Start Num: 9

Candidate Starts for HC_38:

(3, 29510), (Start: 9 @29567 has 52 MA's), (58, 29846), (60, 29858), (80, 29942),

Gene: HUHilltop_38 Start: 29837, Stop: 30343, Start Num: 9

Candidate Starts for HUHilltop_38:

(Start: 9 @29837 has 52 MA's), (Start: 31 @29930 has 5 MA's), (47, 30035), (53, 30080), (96, 30326),

Gene: Hades_57 Start: 39513, Stop: 39860, Start Num: 22

Candidate Starts for Hades_57:

(Start: 22 @39513 has 180 MA's), (Start: 37 @39552 has 1 MA's), (40, 39561), (49, 39639), (63, 39735), (70, 39756), (80, 39801), (87, 39837), (92, 39855),

Gene: Hamulus_58 Start: 39523, Stop: 39858, Start Num: 29

Candidate Starts for Hamulus_58:

(Start: 29 @39523 has 20 MA's), (Start: 37 @39550 has 1 MA's), (40, 39559), (49, 39637), (63, 39733), (70, 39754), (80, 39799), (87, 39835), (92, 39853),

Gene: Harley_59 Start: 39484, Stop: 39822, Start Num: 30

Candidate Starts for Harley_59:

(Start: 30 @39484 has 3 MA's), (Start: 37 @39511 has 1 MA's), (77, 39751), (83, 39781), (91, 39814), (92, 39817),

Gene: Hegedechwinu_56 Start: 37727, Stop: 38074, Start Num: 22

Candidate Starts for Hegedechwinu_56:

(Start: 22 @37727 has 180 MA's), (Start: 37 @37766 has 1 MA's), (40, 37775), (49, 37853), (63, 37949), (80, 38015), (87, 38051), (92, 38069),

Gene: Hlubikazi_52 Start: 36733, Stop: 37080, Start Num: 22

Candidate Starts for Hlubikazi_52:

(4, 36613), (Start: 22 @36733 has 180 MA's), (Start: 37 @36772 has 1 MA's), (44, 36811), (48, 36856), (49, 36859), (63, 36955), (80, 37021),

Gene: Huphlebuff_66 Start: 36527, Stop: 36865, Start Num: 32

Candidate Starts for Huphlebuff_66:

(Start: 32 @36527 has 17 MA's), (52, 36653), (58, 36692), (82, 36809), (89, 36845), (92, 36854),

Gene: IMpilo_52 Start: 36571, Stop: 36918, Start Num: 22

Candidate Starts for IMpilo_52:

(4, 36451), (7, 36481), (10, 36502), (Start: 22 @36571 has 180 MA's), (Start: 37 @36610 has 1 MA's), (49, 36697), (63, 36793), (70, 36814), (80, 36859),

Gene: IbOuu_57 Start: 39092, Stop: 39439, Start Num: 22

Candidate Starts for IbOuu_57:

(Start: 22 @39092 has 180 MA's), (Start: 37 @39131 has 1 MA's), (40, 39140), (49, 39218), (63, 39314), (80, 39380), (87, 39416), (92, 39434),

Gene: Ibhubesi_56 Start: 38705, Stop: 39052, Start Num: 22

Candidate Starts for Ibhubesi_56:

(4, 38585), (7, 38615), (10, 38636), (Start: 22 @38705 has 180 MA's), (Start: 37 @38744 has 1 MA's), (44, 38783), (48, 38828), (49, 38831), (63, 38927), (70, 38948), (80, 38993), (87, 39029), (92, 39047),

Gene: Inventum_51 Start: 38209, Stop: 38556, Start Num: 22

Candidate Starts for Inventum_51:

(Start: 22 @38209 has 180 MA's), (Start: 37 @38248 has 1 MA's), (40, 38257), (49, 38335), (63, 38431), (70, 38452), (80, 38497), (87, 38533), (92, 38551),

Gene: Island3_39 Start: 31520, Stop: 31951, Start Num: 9

Candidate Starts for Island3_39:

(Start: 9 @31520 has 52 MA's), (Start: 31 @31613 has 5 MA's), (39, 31643), (58, 31793), (60, 31805), (80, 31889),

Gene: JF1_54 Start: 37767, Stop: 38120, Start Num: 26

Candidate Starts for JF1_54:

(Start: 26 @37767 has 20 MA's), (Start: 33 @37791 has 1 MA's), (34, 37794), (45, 37869), (52, 37908), (58, 37956), (61, 37974), (64, 37995), (66, 37998),

Gene: Jabbawokkie_70 Start: 40392, Stop: 40781, Start Num: 16

Candidate Starts for Jabbawokkie_70:

(13, 40380), (Start: 16 @40392 has 11 MA's), (18, 40410), (Start: 27 @40443 has 1 MA's), (Start: 37 @40473 has 1 MA's), (80, 40722), (83, 40740), (91, 40773), (92, 40776),

Gene: JalFarm20_69 Start: 42632, Stop: 42970, Start Num: 30

Candidate Starts for JalFarm20_69:

(Start: 30 @42632 has 3 MA's), (Start: 37 @42659 has 1 MA's), (77, 42899), (83, 42929), (91, 42962), (92, 42965),

Gene: James_60 Start: 40182, Stop: 40529, Start Num: 22

Candidate Starts for James_60:

(4, 40062), (Start: 22 @40182 has 180 MA's), (Start: 37 @40221 has 1 MA's), (48, 40305), (49, 40308), (63, 40404), (80, 40470),

Gene: Jarcob_56 Start: 38660, Stop: 39007, Start Num: 22

Candidate Starts for Jarcob_56:

(6, 38564), (Start: 22 @38660 has 180 MA's), (Start: 37 @38699 has 1 MA's), (48, 38783), (49, 38786), (63, 38882), (80, 38948), (92, 39002),

Gene: Jebeks_39 Start: 29792, Stop: 30295, Start Num: 9

Candidate Starts for Jebeks_39:

(Start: 9 @29792 has 52 MA's), (Start: 31 @29885 has 5 MA's), (47, 29987), (53, 30032), (96, 30278),

Gene: Jinglebell_61 Start: 41220, Stop: 41567, Start Num: 22

Candidate Starts for Jinglebell_61:

(Start: 22 @41220 has 180 MA's), (Start: 37 @41259 has 1 MA's), (44, 41298), (48, 41343), (49, 41346), (63, 41442), (70, 41463), (80, 41508),

Gene: Job42_58 Start: 40600, Stop: 40947, Start Num: 22

Candidate Starts for Job42_58:

(4, 40480), (10, 40531), (Start: 22 @40600 has 180 MA's), (Start: 37 @40639 has 1 MA's), (40, 40648), (49, 40726), (63, 40822), (80, 40888),

Gene: JoeyJr_51 Start: 37115, Stop: 37462, Start Num: 22

Candidate Starts for JoeyJr_51:

(6, 37019), (Start: 22 @37115 has 180 MA's), (Start: 37 @37154 has 1 MA's), (48, 37238), (49, 37241), (63, 37337), (70, 37358), (80, 37403), (92, 37457),

Gene: JoieB_65 Start: 36960, Stop: 37298, Start Num: 32

Candidate Starts for JoieB_65:

(Start: 32 @36960 has 17 MA's), (52, 37086), (58, 37125), (82, 37242), (89, 37278), (92, 37287),

Gene: Journey_40 Start: 29383, Stop: 29745, Start Num: 21

Candidate Starts for Journey_40:

(Start: 21 @29383 has 17 MA's), (Start: 22 @29386 has 180 MA's), (Start: 32 @29413 has 17 MA's), (39, 29434), (42, 29449), (46, 29500), (50, 29521), (58, 29587), (80, 29683), (82, 29695), (90, 29734),

Gene: Juice456_57 Start: 40576, Stop: 40926, Start Num: 22

Candidate Starts for Juice456_57:

(4, 40456), (7, 40486), (Start: 22 @40576 has 180 MA's), (Start: 37 @40615 has 1 MA's), (77, 40855), (83, 40885), (91, 40918), (92, 40921),

Gene: Juliette_56 Start: 37923, Stop: 38273, Start Num: 26

Candidate Starts for Juliette_56:

(Start: 26 @37923 has 20 MA's), (Start: 33 @37947 has 1 MA's), (34, 37950), (45, 38025), (52, 38064), (58, 38109), (61, 38127), (64, 38148), (66, 38151),

Gene: Jung_37 Start: 29761, Stop: 30264, Start Num: 9

Candidate Starts for Jung_37:

(2, 29674), (Start: 9 @29761 has 52 MA's), (Start: 31 @29854 has 5 MA's), (47, 29956), (53, 30001), (91, 30175), (96, 30247),

Gene: Juniormint_38 Start: 29836, Stop: 30339, Start Num: 9

Candidate Starts for Juniormint_38:

(2, 29749), (Start: 9 @29836 has 52 MA's), (Start: 31 @29929 has 5 MA's), (47, 30031), (53, 30076), (91, 30250), (96, 30322),

Gene: Juniper1_54 Start: 38516, Stop: 38863, Start Num: 22

Candidate Starts for Juniper1_54:

(Start: 22 @38516 has 180 MA's), (Start: 37 @38555 has 1 MA's), (40, 38564), (49, 38642), (63, 38738), (70, 38759), (80, 38804), (87, 38840), (92, 38858),

Gene: Karhdo_53 Start: 38205, Stop: 38552, Start Num: 22

Candidate Starts for Karhdo_53:

(4, 38085), (Start: 22 @38205 has 180 MA's), (Start: 37 @38244 has 1 MA's), (48, 38328), (49, 38331), (63, 38427), (80, 38493), (92, 38547),

Gene: Kari_38 Start: 29804, Stop: 30307, Start Num: 9

Candidate Starts for Kari_38:

(Start: 9 @29804 has 52 MA's), (Start: 31 @29897 has 5 MA's), (47, 29999), (53, 30044), (96, 30290),

Gene: Kenuha5_54 Start: 37650, Stop: 37985, Start Num: 29

Candidate Starts for Kenuha5_54:

(Start: 29 @37650 has 20 MA's), (Start: 37 @37677 has 1 MA's), (49, 37764), (63, 37860), (70, 37881), (80, 37926), (87, 37962), (92, 37980),

Gene: Kersh_58 Start: 40958, Stop: 41305, Start Num: 22

Candidate Starts for Kersh_58:

(4, 40838), (7, 40868), (Start: 22 @40958 has 180 MA's), (Start: 37 @40997 has 1 MA's), (44, 41036), (48, 41081), (49, 41084), (63, 41180), (80, 41246), (92, 41300),

Gene: Kevin1_42 Start: 30562, Stop: 30885, Start Num: 31

Candidate Starts for Kevin1_42:

(15, 30502), (19, 30538), (Start: 31 @30562 has 5 MA's), (35, 30580), (43, 30622), (57, 30730), (59, 30739), (71, 30805), (75, 30811), (81, 30838), (85, 30862),

Gene: KilKor_38 Start: 30054, Stop: 30557, Start Num: 9

Candidate Starts for KilKor_38:

(2, 29967), (Start: 9 @30054 has 52 MA's), (Start: 31 @30147 has 5 MA's), (47, 30249), (53, 30294), (91, 30468), (96, 30540),

Gene: Kimberlium_58 Start: 40279, Stop: 40626, Start Num: 22

Candidate Starts for Kimberlium_58:

(Start: 22 @40279 has 180 MA's), (Start: 37 @40318 has 1 MA's), (40, 40327), (49, 40405), (63, 40501), (70, 40522), (80, 40567), (92, 40621),

Gene: KingMidas_55 Start: 38777, Stop: 39124, Start Num: 22

Candidate Starts for KingMidas_55:

(6, 38681), (Start: 22 @38777 has 180 MA's), (Start: 37 @38816 has 1 MA's), (48, 38900), (49, 38903), (63, 38999), (70, 39020), (80, 39065), (92, 39119),

Gene: Kingsley_53 Start: 37622, Stop: 37969, Start Num: 22

Candidate Starts for Kingsley_53:

(Start: 22 @37622 has 180 MA's), (Start: 37 @37661 has 1 MA's), (44, 37700), (48, 37745), (49, 37748), (63, 37844), (80, 37910),

Gene: Koella_50 Start: 34590, Stop: 34937, Start Num: 22

Candidate Starts for Koella_50:

(6, 34494), (Start: 22 @34590 has 180 MA's), (Start: 37 @34629 has 1 MA's), (48, 34713), (49, 34716), (63, 34812), (80, 34878), (92, 34932),

Gene: Krakatau_54 Start: 38333, Stop: 38674, Start Num: 25

Candidate Starts for Krakatau_54:

(Start: 25 @38333 has 3 MA's), (Start: 29 @38339 has 20 MA's), (Start: 37 @38366 has 1 MA's), (49, 38453), (63, 38549), (70, 38570), (80, 38615), (87, 38651), (92, 38669),

Gene: Kraw_55 Start: 37611, Stop: 37961, Start Num: 26

Candidate Starts for Kraw_55:

(Start: 26 @37611 has 20 MA's), (Start: 33 @37635 has 1 MA's), (34, 37638), (45, 37713), (52, 37752), (58, 37797), (61, 37815), (64, 37836), (66, 37839),

Gene: KristaRAM_59 Start: 41162, Stop: 41509, Start Num: 22

Candidate Starts for KristaRAM_59:

(4, 41042), (Start: 22 @41162 has 180 MA's), (Start: 37 @41201 has 1 MA's), (44, 41240), (48, 41285), (49, 41288), (63, 41384), (70, 41405), (80, 41450), (87, 41486), (92, 41504),

Gene: Ksquared_38 Start: 29814, Stop: 30317, Start Num: 9

Candidate Starts for Ksquared_38:

(2, 29727), (Start: 9 @29814 has 52 MA's), (Start: 31 @29907 has 5 MA's), (47, 30009), (53, 30054), (91, 30228), (96, 30300),

Gene: Langerak_38 Start: 29820, Stop: 30326, Start Num: 9

Candidate Starts for Langerak_38:

(Start: 9 @29820 has 52 MA's), (Start: 31 @29913 has 5 MA's), (47, 30018), (53, 30063), (96, 30309),

Gene: LastJedi_50 Start: 35910, Stop: 36257, Start Num: 22

Candidate Starts for LastJedi_50:

(6, 35814), (Start: 22 @35910 has 180 MA's), (Start: 37 @35949 has 1 MA's), (48, 36033), (49, 36036), (63, 36132), (80, 36198), (92, 36252),

Gene: Latretium_58 Start: 39236, Stop: 39583, Start Num: 22

Candidate Starts for Latretium_58:

(Start: 22 @39236 has 180 MA's), (Start: 37 @39275 has 1 MA's), (48, 39359), (49, 39362), (63, 39458), (70, 39479), (80, 39524), (87, 39560), (92, 39578),

Gene: Leozinho_55 Start: 37995, Stop: 38342, Start Num: 22

Candidate Starts for Leozinho_55:

(4, 37872), (10, 37923), (Start: 22 @37995 has 180 MA's), (Start: 37 @38034 has 1 MA's), (40, 38043), (49, 38121), (63, 38217), (70, 38238), (80, 38283), (92, 38337),

Gene: Leperchaun_48 Start: 36345, Stop: 36692, Start Num: 22

Candidate Starts for Leperchaun_48:

(6, 36249), (Start: 22 @36345 has 180 MA's), (Start: 37 @36384 has 1 MA's), (48, 36468), (49, 36471), (63, 36567), (70, 36588), (80, 36633), (92, 36687),

Gene: LilMoolah_54 Start: 38105, Stop: 38452, Start Num: 22

Candidate Starts for LilMoolah_54:

(4, 37985), (10, 38036), (Start: 22 @38105 has 180 MA's), (Start: 37 @38144 has 1 MA's), (49, 38231), (63, 38327), (80, 38393),

Gene: LilSpotty_55 Start: 36520, Stop: 36927, Start Num: 16

Candidate Starts for LilSpotty_55:

(Start: 16 @36520 has 11 MA's), (Start: 21 @36565 has 17 MA's), (39, 36616), (42, 36631), (49, 36700), (50, 36703), (58, 36769), (80, 36865), (82, 36877), (90, 36916),

Gene: LittleShirley_55 Start: 39149, Stop: 39496, Start Num: 22

Candidate Starts for LittleShirley_55:

(4, 39029), (7, 39059), (Start: 22 @39149 has 180 MA's), (Start: 37 @39188 has 1 MA's), (48, 39272), (49, 39275), (63, 39371), (80, 39437),

Gene: Lizziana_62 Start: 39663, Stop: 40010, Start Num: 22

Candidate Starts for Lizziana_62:

(6, 39567), (Start: 22 @39663 has 180 MA's), (Start: 37 @39702 has 1 MA's), (48, 39786), (49, 39789), (63, 39885), (80, 39951), (92, 40005),

Gene: Llama_61 Start: 41074, Stop: 41421, Start Num: 22

Candidate Starts for Llama_61:

(Start: 22 @41074 has 180 MA's), (Start: 37 @41113 has 1 MA's), (44, 41152), (48, 41197), (49, 41200), (63, 41296), (70, 41317), (80, 41362),

Gene: Llij_52 Start: 37513, Stop: 37860, Start Num: 22

Candidate Starts for Llij_52:

(6, 37417), (7, 37423), (Start: 22 @37513 has 180 MA's), (Start: 37 @37552 has 1 MA's), (48, 37636), (49, 37639), (63, 37735),

Gene: Lorde_56 Start: 36800, Stop: 37147, Start Num: 22

Candidate Starts for Lorde_56:

(6, 36704), (7, 36710), (Start: 22 @36800 has 180 MA's), (Start: 37 @36839 has 1 MA's), (48, 36923), (49, 36926), (63, 37022),

Gene: LunaBlu_58 Start: 39240, Stop: 39587, Start Num: 22

Candidate Starts for LunaBlu_58:

(4, 39120), (7, 39150), (10, 39171), (Start: 22 @39240 has 180 MA's), (Start: 37 @39279 has 1 MA's), (48, 39363), (49, 39366), (63, 39462), (70, 39483), (80, 39528), (87, 39564), (92, 39582),

Gene: LunaStella_54 Start: 37871, Stop: 38221, Start Num: 22

Candidate Starts for LunaStella_54:

(Start: 22 @37871 has 180 MA's), (Start: 37 @37910 has 1 MA's), (83, 38180), (91, 38213), (92, 38216),

Gene: MadMen_54 Start: 38437, Stop: 38784, Start Num: 22

Candidate Starts for MadMen_54:

(6, 38341), (7, 38347), (Start: 22 @38437 has 180 MA's), (Start: 37 @38476 has 1 MA's), (44, 38515), (48, 38560), (49, 38563), (63, 38659), (80, 38725), (92, 38779),

Gene: Madiba_54 Start: 37686, Stop: 38033, Start Num: 22

Candidate Starts for Madiba_54:

(4, 37566), (7, 37596), (Start: 22 @37686 has 180 MA's), (Start: 37 @37725 has 1 MA's), (44, 37764), (48, 37809), (49, 37812), (63, 37908), (80, 37974),

Gene: Mahavrat_54 Start: 38065, Stop: 38412, Start Num: 22

Candidate Starts for Mahavrat_54:

(Start: 22 @38065 has 180 MA's), (48, 38188), (49, 38191), (63, 38287), (70, 38308), (80, 38353), (87, 38389), (92, 38407),

Gene: Majeke_38 Start: 29845, Stop: 30351, Start Num: 9

Candidate Starts for Majeke_38:

(Start: 9 @29845 has 52 MA's), (Start: 31 @29938 has 5 MA's), (47, 30043), (53, 30088), (96, 30334),

Gene: Malithi_38 Start: 29723, Stop: 30226, Start Num: 9

Candidate Starts for Malithi_38:

(2, 29636), (Start: 9 @29723 has 52 MA's), (Start: 31 @29816 has 5 MA's), (47, 29918), (53, 29963), (96, 30209),

Gene: Malthus_55 Start: 37611, Stop: 37961, Start Num: 26

Candidate Starts for Malthus_55:

(Start: 26 @37611 has 20 MA's), (Start: 33 @37635 has 1 MA's), (34, 37638), (45, 37713), (52, 37752), (58, 37797), (61, 37815), (64, 37836), (66, 37839),

Gene: Mandlovu_52 Start: 36675, Stop: 37022, Start Num: 22

Candidate Starts for Mandlovu_52:

(4, 36555), (Start: 22 @36675 has 180 MA's), (Start: 37 @36714 has 1 MA's), (44, 36753), (48, 36798), (49, 36801), (63, 36897), (80, 36963),

Gene: Mangethe_38 Start: 29845, Stop: 30351, Start Num: 9

Candidate Starts for Mangethe_38:

(Start: 9 @29845 has 52 MA's), (Start: 31 @29938 has 5 MA's), (47, 30043), (53, 30088), (96, 30334),

Gene: Mantra_52 Start: 37558, Stop: 37905, Start Num: 22

Candidate Starts for Mantra_52:

(Start: 22 @37558 has 180 MA's), (Start: 37 @37597 has 1 MA's), (49, 37684), (63, 37780), (70, 37801), (80, 37846), (92, 37900),

Gene: Maravista_57 Start: 40112, Stop: 40459, Start Num: 22

Candidate Starts for Maravista_57:

(Start: 22 @40112 has 180 MA's), (Start: 37 @40151 has 1 MA's), (48, 40235), (49, 40238), (63, 40334), (80, 40400), (92, 40454),

Gene: Marker_58 Start: 38786, Stop: 39127, Start Num: 25

Candidate Starts for Marker_58:

(Start: 25 @38786 has 3 MA's), (Start: 29 @38792 has 20 MA's), (Start: 37 @38819 has 1 MA's), (44, 38858), (48, 38903), (49, 38906), (63, 39002), (70, 39023), (80, 39068), (87, 39104), (92, 39122),

Gene: Martik_56 Start: 38616, Stop: 38963, Start Num: 22

Candidate Starts for Martik_56:

(6, 38520), (Start: 22 @38616 has 180 MA's), (Start: 37 @38655 has 1 MA's), (48, 38739), (49, 38742), (63, 38838), (80, 38904), (92, 38958),

Gene: Marvin_60 Start: 36210, Stop: 36548, Start Num: 32

Candidate Starts for Marvin_60:

(Start: 32 @36210 has 17 MA's), (52, 36336), (58, 36375), (82, 36492), (89, 36528), (92, 36537),

Gene: Mattes_60 Start: 40182, Stop: 40529, Start Num: 22

Candidate Starts for Mattes_60:

(4, 40062), (10, 40113), (Start: 22 @40182 has 180 MA's), (Start: 37 @40221 has 1 MA's), (40, 40230), (49, 40308), (63, 40404), (80, 40470), (92, 40524),

Gene: Megiddo_38 Start: 30054, Stop: 30557, Start Num: 9

Candidate Starts for Megiddo_38:

(2, 29967), (Start: 9 @30054 has 52 MA's), (Start: 31 @30147 has 5 MA's), (47, 30249), (53, 30294), (91, 30468), (96, 30540),

Gene: Melissauren88_55 Start: 38564, Stop: 38899, Start Num: 29

Candidate Starts for Melissauren88_55:

(Start: 29 @38564 has 20 MA's), (Start: 37 @38591 has 1 MA's), (49, 38678), (63, 38774), (70, 38795), (80, 38840), (87, 38876), (92, 38894),

Gene: MichelleMyBell_41 Start: 29657, Stop: 29980, Start Num: 31

Candidate Starts for MichelleMyBell_41:

(15, 29597), (19, 29633), (Start: 31 @29657 has 5 MA's), (35, 29675), (43, 29717), (52, 29786), (57, 29825), (59, 29834), (71, 29900), (75, 29906), (81, 29933),

Gene: MilanaBonita_47 Start: 35145, Stop: 35492, Start Num: 22

Candidate Starts for MilanaBonita_47:

(Start: 22 @35145 has 180 MA's), (Start: 37 @35184 has 1 MA's), (40, 35193), (49, 35271), (63, 35367), (70, 35388), (80, 35433), (87, 35469),

Gene: MilleniumForce_60 Start: 41234, Stop: 41581, Start Num: 22

Candidate Starts for MilleniumForce_60:

(Start: 22 @41234 has 180 MA's), (Start: 37 @41273 has 1 MA's), (40, 41282), (49, 41360), (63, 41456), (80, 41522), (92, 41576),

Gene: MinionDave_55 Start: 38963, Stop: 39310, Start Num: 22

Candidate Starts for MinionDave_55:

(Start: 22 @38963 has 180 MA's), (Start: 37 @39002 has 1 MA's), (40, 39011), (49, 39089), (63, 39185), (70, 39206), (80, 39251), (87, 39287), (92, 39305),

Gene: Minnie_60 Start: 40536, Stop: 40883, Start Num: 22

Candidate Starts for Minnie_60:

(Start: 22 @40536 has 180 MA's), (Start: 37 @40575 has 1 MA's), (40, 40584), (49, 40662), (63, 40758), (80, 40824), (92, 40878),

Gene: Misha28_53 Start: 37256, Stop: 37618, Start Num: 21

Candidate Starts for Misha28_53:

(Start: 21 @37256 has 17 MA's), (Start: 22 @37259 has 180 MA's), (Start: 32 @37286 has 17 MA's), (39, 37307), (42, 37322), (46, 37373), (50, 37394), (58, 37460), (80, 37556), (82, 37568), (90, 37607),

Gene: MissDaisy_52 Start: 37140, Stop: 37493, Start Num: 26

Candidate Starts for MissDaisy_52:

(Start: 26 @37140 has 20 MA's), (Start: 33 @37164 has 1 MA's), (34, 37167), (45, 37242), (52, 37281),

Gene: MisterCuddles_54 Start: 38422, Stop: 38769, Start Num: 22

Candidate Starts for MisterCuddles_54:

(4, 38299), (10, 38350), (Start: 22 @38422 has 180 MA's), (Start: 37 @38461 has 1 MA's), (40, 38470), (44, 38500), (49, 38548), (63, 38644), (70, 38665), (80, 38710), (87, 38746), (92, 38764),

Gene: Mitti_54 Start: 37787, Stop: 38140, Start Num: 26

Candidate Starts for Mitti_54:

(Start: 26 @37787 has 20 MA's), (Start: 33 @37811 has 1 MA's), (34, 37814), (45, 37889), (52, 37928), (58, 37976), (61, 37994), (64, 38015), (66, 38018),

Gene: Modragons_60 Start: 41064, Stop: 41411, Start Num: 22

Candidate Starts for Modragons_60:

(Start: 22 @41064 has 180 MA's), (Start: 37 @41103 has 1 MA's), (44, 41142), (48, 41187), (49, 41190), (63, 41286), (70, 41307), (80, 41352),

Gene: MooMoo_52 Start: 37750, Stop: 38121, Start Num: 17

Candidate Starts for MooMoo_52:

(Start: 17 @37750 has 1 MA's), (Start: 33 @37816 has 1 MA's), (38, 37831), (58, 37969), (62, 37993), (68, 38014), (74, 38044), (83, 38083), (86, 38101), (87, 38104), (88, 38110),

Gene: Moonbeam_55 Start: 38708, Stop: 39043, Start Num: 29

Candidate Starts for Moonbeam_55:

(Start: 29 @38708 has 20 MA's), (Start: 37 @38735 has 1 MA's), (49, 38822), (63, 38918), (70, 38939), (80, 38984), (87, 39020), (92, 39038),

Gene: MosMoris_61 Start: 36143, Stop: 36481, Start Num: 32

Candidate Starts for MosMoris_61:

(Start: 32 @36143 has 17 MA's), (52, 36269), (58, 36308), (82, 36425), (89, 36461), (92, 36470),

Gene: Mova_57 Start: 38190, Stop: 38537, Start Num: 22

Candidate Starts for Mova_57:

(Start: 22 @38190 has 180 MA's), (Start: 37 @38229 has 1 MA's), (40, 38238), (49, 38316), (63, 38412), (80, 38478), (92, 38532),

Gene: Mozy_65 Start: 41197, Stop: 41544, Start Num: 22

Candidate Starts for Mozy_65:

(Start: 22 @41197 has 180 MA's), (Start: 37 @41236 has 1 MA's), (49, 41323), (63, 41419), (70, 41440), (80, 41485), (92, 41539),

Gene: Ms6_52 Start: 34295, Stop: 34630, Start Num: 29

Candidate Starts for Ms6_52:

(Start: 29 @34295 has 20 MA's), (Start: 37 @34322 has 1 MA's), (40, 34331), (49, 34409), (63, 34505), (70, 34526), (80, 34571), (87, 34607), (92, 34625),

Gene: MulchExplorer_62 Start: 40278, Stop: 40625, Start Num: 22

Candidate Starts for MulchExplorer_62:

(Start: 22 @40278 has 180 MA's), (Start: 37 @40317 has 1 MA's), (40, 40326), (49, 40404), (63, 40500), (70, 40521), (80, 40566), (92, 40620),

Gene: MulchSalad_54 Start: 36454, Stop: 36801, Start Num: 28

Candidate Starts for MulchSalad_54:

(Start: 21 @36439 has 17 MA's), (Start: 25 @36448 has 3 MA's), (Start: 28 @36454 has 1 MA's), (39, 36490), (42, 36505), (46, 36556), (50, 36577), (58, 36643), (80, 36739), (82, 36751), (90, 36790),

Gene: Mutaforma13_60 Start: 41520, Stop: 41867, Start Num: 22

Candidate Starts for Mutaforma13_60:

(4, 41400), (Start: 22 @41520 has 180 MA's), (Start: 37 @41559 has 1 MA's), (44, 41598), (48, 41643), (49, 41646), (63, 41742), (69, 41760), (70, 41763), (74, 41787), (79, 41805), (80, 41808),

Gene: Nazo_42 Start: 32113, Stop: 32625, Start Num: 9

Candidate Starts for Nazo_42:

(Start: 9 @32113 has 52 MA's), (Start: 31 @32206 has 5 MA's), (41, 32245), (53, 32359), (56, 32374), (59, 32395), (81, 32494), (97, 32614),

Gene: Necropolis_38 Start: 29804, Stop: 30307, Start Num: 9

Candidate Starts for Necropolis_38:

(Start: 9 @29804 has 52 MA's), (Start: 31 @29897 has 5 MA's), (47, 29999), (53, 30044), (96, 30290),

Gene: Nimbo_50 Start: 36918, Stop: 37265, Start Num: 22

Candidate Starts for Nimbo_50:

(6, 36822), (Start: 22 @36918 has 180 MA's), (Start: 37 @36957 has 1 MA's), (48, 37041), (49, 37044), (63, 37140), (70, 37161), (80, 37206), (92, 37260),

Gene: Nitzel_54 Start: 37977, Stop: 38318, Start Num: 24

Candidate Starts for Nitzel_54:

(Start: 24 @37977 has 2 MA's), (Start: 37 @38010 has 1 MA's), (44, 38049), (48, 38094), (49, 38097), (63, 38193), (80, 38259), (92, 38313),

Gene: Nivrat_52 Start: 37978, Stop: 38325, Start Num: 22

Candidate Starts for Nivrat_52:

(4, 37858), (10, 37909), (Start: 22 @37978 has 180 MA's), (Start: 37 @38017 has 1 MA's), (49, 38104), (63, 38200), (80, 38266),

Gene: NormanBulbieJr_56 Start: 38603, Stop: 38950, Start Num: 22

Candidate Starts for NormanBulbieJr_56:

(6, 38507), (Start: 22 @38603 has 180 MA's), (Start: 37 @38642 has 1 MA's), (48, 38726), (49, 38729), (63, 38825), (80, 38891), (92, 38945),

Gene: Ochi17_59 Start: 40671, Stop: 41018, Start Num: 22

Candidate Starts for Ochi17_59:

(Start: 22 @40671 has 180 MA's), (Start: 37 @40710 has 1 MA's), (44, 40749), (48, 40794), (49, 40797), (63, 40893), (70, 40914), (80, 40959),

Gene: OfUltron_61 Start: 41220, Stop: 41567, Start Num: 22

Candidate Starts for OfUltron_61:

(Start: 22 @41220 has 180 MA's), (Start: 37 @41259 has 1 MA's), (44, 41298), (48, 41343), (49, 41346), (63, 41442), (70, 41463), (80, 41508),

Gene: Ogopogo_62 Start: 39554, Stop: 39889, Start Num: 29

Candidate Starts for Ogopogo_62:

(Start: 29 @39554 has 20 MA's), (Start: 37 @39581 has 1 MA's), (49, 39668), (63, 39764), (70, 39785), (80, 39830), (87, 39866), (92, 39884),

Gene: Oksu_60 Start: 41483, Stop: 41830, Start Num: 22

Candidate Starts for Oksu_60:

(Start: 22 @41483 has 180 MA's), (Start: 37 @41522 has 1 MA's), (44, 41561), (48, 41606), (49, 41609), (63, 41705), (70, 41726), (80, 41771),

Gene: OldBen_53 Start: 38528, Stop: 38875, Start Num: 22

Candidate Starts for OldBen_53:

(Start: 22 @38528 has 180 MA's), (Start: 37 @38567 has 1 MA's), (44, 38606), (48, 38651), (49, 38654), (63, 38750), (70, 38771), (80, 38816), (92, 38870),

Gene: OlympiaSaint_58 Start: 39124, Stop: 39471, Start Num: 22

Candidate Starts for OlympiaSaint_58:

(6, 39028), (Start: 22 @39124 has 180 MA's), (Start: 37 @39163 has 1 MA's), (48, 39247), (49, 39250), (63, 39346), (80, 39412), (92, 39466),

Gene: OmniCritical_53 Start: 37596, Stop: 37949, Start Num: 26

Candidate Starts for OmniCritical_53:

(Start: 26 @37596 has 20 MA's), (Start: 33 @37620 has 1 MA's), (34, 37623), (45, 37698), (52, 37737), (58, 37785), (61, 37803), (64, 37824), (66, 37827),

Gene: Ovechkin_55 Start: 39124, Stop: 39471, Start Num: 22

Candidate Starts for Ovechkin_55:

(Start: 22 @39124 has 180 MA's), (Start: 37 @39163 has 1 MA's), (44, 39202), (48, 39247), (49, 39250), (63, 39346), (80, 39412), (92, 39466),

Gene: OwlsT2W_56 Start: 38846, Stop: 39193, Start Num: 22

Candidate Starts for OwlsT2W_56:

(Start: 22 @38846 has 180 MA's), (Start: 37 @38885 has 1 MA's), (40, 38894), (49, 38972), (63, 39068), (70, 39089), (80, 39134), (87, 39170), (92, 39188),

Gene: PHappiness_51 Start: 36891, Stop: 37238, Start Num: 22

Candidate Starts for PHappiness_51:

(6, 36795), (Start: 22 @36891 has 180 MA's), (Start: 37 @36930 has 1 MA's), (48, 37014), (49, 37017), (63, 37113), (70, 37134), (80, 37179), (92, 37233),

Gene: PMC_53 Start: 39230, Stop: 39577, Start Num: 22

Candidate Starts for PMC_53:

(6, 39134), (Start: 22 @39230 has 180 MA's), (Start: 37 @39269 has 1 MA's), (48, 39353), (49, 39356), (63, 39452), (70, 39473), (80, 39518), (92, 39572),

Gene: Pacc40_50 Start: 36965, Stop: 37312, Start Num: 22

Candidate Starts for Pacc40_50:

(6, 36869), (Start: 22 @36965 has 180 MA's), (Start: 37 @37004 has 1 MA's), (48, 37088), (49, 37091), (63, 37187), (70, 37208), (80, 37253), (92, 37307),

Gene: Patt_51 Start: 36864, Stop: 37217, Start Num: 26

Candidate Starts for Patt_51:

(Start: 26 @36864 has 20 MA's), (Start: 33 @36888 has 1 MA's), (34, 36891), (45, 36966), (52, 37005), (66, 37095),

Gene: Phalconet_55 Start: 37835, Stop: 38170, Start Num: 29

Candidate Starts for Phalconet_55:

(Start: 29 @37835 has 20 MA's), (Start: 37 @37862 has 1 MA's), (49, 37949), (63, 38045), (70, 38066), (80, 38111), (87, 38147), (92, 38165),

Gene: Phalm_38 Start: 30054, Stop: 30557, Start Num: 9

Candidate Starts for Phalm_38:

(2, 29967), (Start: 9 @30054 has 52 MA's), (Start: 31 @30147 has 5 MA's), (47, 30249), (53, 30294), (91, 30468), (96, 30540),

Gene: Phanphagia_54 Start: 39414, Stop: 39761, Start Num: 22

Candidate Starts for Phanphagia_54:

(Start: 22 @39414 has 180 MA's), (Start: 37 @39453 has 1 MA's), (40, 39462), (49, 39540), (63, 39636), (70, 39657), (80, 39702), (87, 39738),

Gene: Phasih_54 Start: 39031, Stop: 39381, Start Num: 22

Candidate Starts for Phasih_54:

(6, 38935), (Start: 22 @39031 has 180 MA's), (Start: 37 @39070 has 1 MA's), (44, 39109), (48, 39154), (49, 39157), (63, 39253), (69, 39271), (70, 39274), (74, 39298), (79, 39316), (80, 39319), (92, 39373), (93, 39376),

Gene: Phatniss_54 Start: 38608, Stop: 38955, Start Num: 22

Candidate Starts for Phatniss_54:

(6, 38512), (7, 38518), (Start: 22 @38608 has 180 MA's), (Start: 37 @38647 has 1 MA's), (48, 38731), (49, 38734), (63, 38830),

Gene: Phayonce_40 Start: 32024, Stop: 32536, Start Num: 9

Candidate Starts for Phayonce_40:

(Start: 9 @32024 has 52 MA's), (Start: 31 @32117 has 5 MA's), (35, 32135), (39, 32147), (41, 32156), (51, 32237), (53, 32270), (59, 32306), (81, 32405), (97, 32525),

Gene: Phegasus_38 Start: 29812, Stop: 30318, Start Num: 9

Candidate Starts for Phegasus_38:

(Start: 9 @29812 has 52 MA's), (Start: 31 @29905 has 5 MA's), (47, 30010), (53, 30055), (96, 30301),

Gene: PhesterPhotato_57 Start: 38640, Stop: 38987, Start Num: 22

Candidate Starts for PhesterPhotato_57:

(Start: 22 @38640 has 180 MA's), (Start: 37 @38679 has 1 MA's), (40, 38688), (49, 38766), (63, 38862), (70, 38883), (80, 38928), (87, 38964), (92, 38982),

Gene: Philonius_41 Start: 29325, Stop: 29648, Start Num: 31

Candidate Starts for Philonius_41:

(15, 29265), (19, 29301), (Start: 31 @29325 has 5 MA's), (35, 29343), (43, 29385), (52, 29454), (57, 29493), (59, 29502), (71, 29568), (75, 29574), (81, 29601),

Gene: Philus_59 Start: 39768, Stop: 40115, Start Num: 22

Candidate Starts for Philus_59:

(4, 39648), (7, 39678), (Start: 22 @39768 has 180 MA's), (Start: 37 @39807 has 1 MA's), (40, 39816), (48, 39891), (49, 39894), (63, 39990), (80, 40056),

Gene: Phineas_38 Start: 30175, Stop: 30678, Start Num: 9

Candidate Starts for Phineas_38:

(Start: 9 @30175 has 52 MA's), (Start: 31 @30268 has 5 MA's), (47, 30370), (53, 30415), (96, 30661),

Gene: Piper2020_55 Start: 37972, Stop: 38334, Start Num: 21

Candidate Starts for Piper2020_55:

(Start: 21 @37972 has 17 MA's), (Start: 22 @37975 has 180 MA's), (Start: 32 @38002 has 17 MA's), (39, 38023), (42, 38038), (46, 38089), (50, 38110), (58, 38176), (80, 38272), (82, 38284), (90, 38323),

Gene: Pippy_54 Start: 37474, Stop: 37821, Start Num: 22

Candidate Starts for Pippy_54:

(6, 37378), (Start: 22 @37474 has 180 MA's), (Start: 37 @37513 has 1 MA's), (48, 37597), (49, 37600), (63, 37696), (80, 37762), (92, 37816),

Gene: Plumbus_58 Start: 38935, Stop: 39282, Start Num: 22

Candidate Starts for Plumbus_58:

(Start: 22 @38935 has 180 MA's), (Start: 37 @38974 has 1 MA's), (49, 39061), (63, 39157), (70, 39178), (80, 39223), (92, 39277),

Gene: Poenanya_56 Start: 39792, Stop: 40139, Start Num: 22

Candidate Starts for Poenanya_56:

(Start: 22 @39792 has 180 MA's), (Start: 37 @39831 has 1 MA's), (44, 39870), (48, 39915), (49, 39918), (63, 40014), (69, 40032), (70, 40035), (74, 40059), (79, 40077), (80, 40080),

Gene: Poise_64 Start: 36039, Stop: 36377, Start Num: 32

Candidate Starts for Poise_64:

(Start: 32 @36039 has 17 MA's), (52, 36165), (58, 36204), (82, 36321), (89, 36357), (92, 36366),

Gene: Polka14_54 Start: 37988, Stop: 38335, Start Num: 22

Candidate Starts for Polka14_54:

(Start: 22 @37988 has 180 MA's), (Start: 37 @38027 has 1 MA's), (44, 38066), (48, 38111), (49, 38114), (63, 38210), (69, 38228), (70, 38231), (74, 38255), (79, 38273), (80, 38276),

Gene: Polkaroo_38 Start: 29811, Stop: 30314, Start Num: 9

Candidate Starts for Polkaroo_38:

(2, 29724), (Start: 9 @29811 has 52 MA's), (Start: 31 @29904 has 5 MA's), (47, 30006), (53, 30051), (91, 30225), (96, 30297),

Gene: Pollywog_57 Start: 39439, Stop: 39786, Start Num: 22

Candidate Starts for Pollywog_57:

(4, 39319), (7, 39349), (Start: 22 @39439 has 180 MA's), (Start: 37 @39478 has 1 MA's), (48, 39562), (49, 39565), (63, 39661), (70, 39682), (80, 39727), (92, 39781),

Gene: PopTart_51 Start: 37460, Stop: 37795, Start Num: 29

Candidate Starts for PopTart_51:

(Start: 29 @37460 has 20 MA's), (Start: 37 @37487 has 1 MA's), (48, 37571), (49, 37574), (63, 37670), (70, 37691), (80, 37736), (87, 37772), (92, 37790),

Gene: Pringar_63 Start: 36328, Stop: 36666, Start Num: 32

Candidate Starts for Pringar_63:

(Start: 32 @36328 has 17 MA's), (52, 36454), (58, 36493), (82, 36610), (89, 36646), (92, 36655),

Gene: Priscilla_56 Start: 38702, Stop: 39049, Start Num: 22

Candidate Starts for Priscilla_56:

(6, 38606), (Start: 22 @38702 has 180 MA's), (Start: 37 @38741 has 1 MA's), (48, 38825), (49, 38828), (63, 38924), (80, 38990), (92, 39044),

Gene: Purgamenstris_45 Start: 31707, Stop: 32066, Start Num: 21

Candidate Starts for Purgamenstris_45:

(20, 31704), (Start: 21 @31707 has 17 MA's), (Start: 28 @31722 has 1 MA's), (36, 31749), (42, 31773), (50, 31845), (58, 31911), (69, 31959), (80, 32007), (90, 32055),

Gene: Purky_45 Start: 32598, Stop: 33014, Start Num: 9

Candidate Starts for Purky_45:

(Start: 9 @32598 has 52 MA's), (Start: 31 @32691 has 5 MA's), (39, 32721), (50, 32802), (52, 32820), (57, 32859), (59, 32868), (80, 32958), (81, 32967),

Gene: Pygmy_40 Start: 31639, Stop: 32142, Start Num: 9

Candidate Starts for Pygmy_40:

(2, 31552), (Start: 9 @31639 has 52 MA's), (Start: 31 @31732 has 5 MA's), (47, 31834), (53, 31879), (96, 32125),

Gene: QueenHazel_35 Start: 29560, Stop: 29997, Start Num: 9

Candidate Starts for QueenHazel_35:

(5, 29536), (Start: 9 @29560 has 52 MA's), (58, 29839), (60, 29851), (80, 29935),

Gene: QuickMath_57 Start: 40502, Stop: 40849, Start Num: 22

Candidate Starts for QuickMath_57:

(Start: 22 @40502 has 180 MA's), (Start: 37 @40541 has 1 MA's), (40, 40550), (49, 40628), (63, 40724), (70, 40745), (80, 40790), (92, 40844),

Gene: Quico_65 Start: 40968, Stop: 41315, Start Num: 22

Candidate Starts for Quico_65:

(4, 40848), (10, 40899), (Start: 22 @40968 has 180 MA's), (Start: 37 @41007 has 1 MA's), (48, 41091), (49, 41094), (63, 41190), (70, 41211), (80, 41256), (92, 41310),

Gene: Radiance_55 Start: 38727, Stop: 39074, Start Num: 22

Candidate Starts for Radiance_55:

(Start: 22 @38727 has 180 MA's), (Start: 37 @38766 has 1 MA's), (40, 38775), (49, 38853), (63, 38949), (80, 39015), (87, 39051), (92, 39069),

Gene: Raela_64 Start: 36596, Stop: 36934, Start Num: 32

Candidate Starts for Raela_64:

(Start: 32 @36596 has 17 MA's), (52, 36722), (58, 36761), (82, 36878), (89, 36914), (92, 36923),

Gene: Ramsey_56 Start: 39390, Stop: 39737, Start Num: 22

Candidate Starts for Ramsey_56:

(Start: 22 @39390 has 180 MA's), (Start: 37 @39429 has 1 MA's), (44, 39468), (48, 39513), (49, 39516), (63, 39612), (80, 39678), (92, 39732),

Gene: Raymond7_39 Start: 31495, Stop: 31854, Start Num: 21

Candidate Starts for Raymond7_39:

(20, 31492), (Start: 21 @31495 has 17 MA's), (Start: 28 @31510 has 1 MA's), (36, 31537), (42, 31561), (50, 31633), (58, 31699), (69, 31747), (80, 31795), (90, 31843),

Gene: Rebel_37 Start: 27837, Stop: 28196, Start Num: 21

Candidate Starts for Rebel_37:

(20, 27834), (Start: 21 @27837 has 17 MA's), (Start: 28 @27852 has 1 MA's), (36, 27879), (42, 27903), (50, 27975), (58, 28041), (69, 28089), (80, 28137), (90, 28185),

Gene: RedBird_54 Start: 38035, Stop: 38370, Start Num: 29

Candidate Starts for RedBird_54:

(Start: 29 @38035 has 20 MA's), (Start: 37 @38062 has 1 MA's), (49, 38149), (63, 38245), (70, 38266), (80, 38311), (92, 38365),

Gene: RedRaider77_63 Start: 35984, Stop: 36322, Start Num: 32

Candidate Starts for RedRaider77_63:

(Start: 32 @35984 has 17 MA's), (52, 36110), (58, 36149), (82, 36266), (89, 36302), (92, 36311),

Gene: Renaud18_61 Start: 39280, Stop: 39627, Start Num: 22

Candidate Starts for Renaud18_61:

(Start: 22 @39280 has 180 MA's), (Start: 37 @39319 has 1 MA's), (40, 39328), (49, 39406), (63, 39502), (80, 39568), (87, 39604), (92, 39622),

Gene: Reptar3000_52 Start: 36852, Stop: 37205, Start Num: 26

Candidate Starts for Reptar3000_52:

(Start: 26 @36852 has 20 MA's), (Start: 33 @36876 has 1 MA's), (34, 36879), (45, 36954), (52, 36993),

Gene: Rialto_62 Start: 41461, Stop: 41853, Start Num: 16

Candidate Starts for Rialto_62:

(Start: 16 @41461 has 11 MA's), (18, 41479), (Start: 37 @41545 has 1 MA's), (49, 41632), (63, 41728), (70, 41749), (80, 41794), (87, 41830), (92, 41848),

Gene: Rita_57 Start: 37333, Stop: 37680, Start Num: 22

Candidate Starts for Rita_57:

(6, 37237), (7, 37243), (Start: 22 @37333 has 180 MA's), (Start: 37 @37372 has 1 MA's), (44, 37411), (48, 37456), (49, 37459), (63, 37555), (80, 37621), (92, 37675),

Gene: RitaG_51 Start: 37236, Stop: 37583, Start Num: 22

Candidate Starts for RitaG_51:

(6, 37140), (Start: 22 @37236 has 180 MA's), (Start: 37 @37275 has 1 MA's), (48, 37359), (49, 37362), (63, 37458), (70, 37479), (80, 37524), (92, 37578),

Gene: Rockne_57 Start: 39242, Stop: 39589, Start Num: 22

Candidate Starts for Rockne_57:

(6, 39146), (Start: 22 @39242 has 180 MA's), (Start: 37 @39281 has 1 MA's), (48, 39365), (49, 39368), (63, 39464), (70, 39485), (80, 39530), (92, 39584),

Gene: RockyHorror_57 Start: 38303, Stop: 38638, Start Num: 29

Candidate Starts for RockyHorror_57:

(Start: 29 @38303 has 20 MA's), (Start: 37 @38330 has 1 MA's), (49, 38417), (63, 38513), (70, 38534), (80, 38579), (87, 38615), (92, 38633),

Gene: Royals2015_59 Start: 38599, Stop: 38991, Start Num: 16

Candidate Starts for Royals2015_59:

(Start: 16 @38599 has 11 MA's), (18, 38617), (Start: 37 @38683 has 1 MA's), (49, 38770), (63, 38866), (70, 38887), (80, 38932), (87, 38968), (92, 38986),

Gene: Rubeelu_44 Start: 31386, Stop: 31709, Start Num: 31

Candidate Starts for Rubeelu_44:

(15, 31326), (19, 31362), (Start: 31 @31386 has 5 MA's), (35, 31404), (43, 31446), (57, 31554), (59, 31563), (71, 31629), (75, 31635), (81, 31662),

Gene: Ruby_52 Start: 38423, Stop: 38770, Start Num: 22

Candidate Starts for Ruby_52:

(4, 38300), (10, 38351), (Start: 22 @38423 has 180 MA's), (Start: 37 @38462 has 1 MA's), (40, 38471), (44, 38501), (49, 38549), (63, 38645), (70, 38666), (80, 38711), (87, 38747), (92, 38765),

Gene: Ruthiejr_55 Start: 37661, Stop: 38011, Start Num: 26

Candidate Starts for Ruthiejr_55:

(Start: 26 @37661 has 20 MA's), (34, 37688), (45, 37763), (52, 37802), (58, 37847), (61, 37865), (64, 37886), (66, 37889),

Gene: SG4_53 Start: 38120, Stop: 38467, Start Num: 22

Candidate Starts for SG4_53:

(Start: 22 @38120 has 180 MA's), (Start: 37 @38159 has 1 MA's), (40, 38168), (49, 38246), (63, 38342), (70, 38363), (80, 38408), (87, 38444), (92, 38462),

Gene: Saal_58 Start: 39876, Stop: 40223, Start Num: 22

Candidate Starts for Saal_58:

(6, 39780), (Start: 22 @39876 has 180 MA's), (Start: 37 @39915 has 1 MA's), (48, 39999), (49, 40002), (63, 40098), (80, 40164), (92, 40218),

Gene: Sabbb_60 Start: 39564, Stop: 39911, Start Num: 22

Candidate Starts for Sabbb_60:

(4, 39444), (Start: 22 @39564 has 180 MA's), (Start: 37 @39603 has 1 MA's), (49, 39690), (63, 39786), (80, 39852), (92, 39906),

Gene: SamScheppers_52 Start: 38090, Stop: 38440, Start Num: 26

Candidate Starts for SamScheppers_52:

(Start: 26 @38090 has 20 MA's), (Start: 33 @38114 has 1 MA's), (34, 38117), (45, 38192), (52, 38231), (58, 38276), (61, 38294), (64, 38315), (66, 38318),

Gene: Sandalphon_58 Start: 39526, Stop: 39861, Start Num: 29

Candidate Starts for Sandalphon_58:

(Start: 29 @39526 has 20 MA's), (Start: 37 @39553 has 1 MA's), (44, 39592), (48, 39637), (49, 39640), (63, 39736), (70, 39757), (80, 39802), (92, 39856),

Gene: Sarma624_54 Start: 34814, Stop: 35161, Start Num: 22

Candidate Starts for Sarma624_54:

(Start: 22 @34814 has 180 MA's), (Start: 37 @34853 has 1 MA's), (44, 34892), (48, 34937), (49, 34940), (63, 35036), (80, 35102),

Gene: Sassafras_54 Start: 38208, Stop: 38555, Start Num: 22

Candidate Starts for Sassafras_54:

(Start: 22 @38208 has 180 MA's), (Start: 37 @38247 has 1 MA's), (40, 38256), (49, 38334), (63, 38430), (70, 38451), (80, 38496), (87, 38532), (92, 38550),

Gene: SassyB_51 Start: 37460, Stop: 37795, Start Num: 29

Candidate Starts for SassyB_51:

(Start: 29 @37460 has 20 MA's), (Start: 37 @37487 has 1 MA's), (48, 37571), (49, 37574), (63, 37670), (70, 37691), (80, 37736), (87, 37772), (92, 37790),

Gene: Scottish_54 Start: 38248, Stop: 38595, Start Num: 22

Candidate Starts for Scottish_54:

(6, 38152), (Start: 22 @38248 has 180 MA's), (Start: 37 @38287 has 1 MA's), (48, 38371), (49, 38374), (63, 38470), (70, 38491), (80, 38536), (92, 38590),

Gene: Seabastian_61 Start: 41221, Stop: 41568, Start Num: 22

Candidate Starts for Seabastian_61:

(Start: 22 @41221 has 180 MA's), (Start: 37 @41260 has 1 MA's), (44, 41299), (48, 41344), (49, 41347), (63, 41443), (70, 41464), (80, 41509),

Gene: Seagreen_56 Start: 38212, Stop: 38559, Start Num: 22

Candidate Starts for Seagreen_56:

(Start: 22 @38212 has 180 MA's), (Start: 37 @38251 has 1 MA's), (70, 38455), (83, 38518), (91, 38551), (92, 38554),

Gene: Sejanus_55 Start: 46982, Stop: 47341, Start Num: 21

Candidate Starts for Sejanus_55:

(Start: 21 @46982 has 17 MA's), (Start: 32 @47012 has 17 MA's), (42, 47048), (50, 47120), (58, 47186), (60, 47198), (66, 47225), (69, 47234), (80, 47282), (90, 47330),

Gene: Shauna1_55 Start: 39323, Stop: 39670, Start Num: 22

Candidate Starts for Shauna1_55:

(Start: 22 @39323 has 180 MA's), (Start: 37 @39362 has 1 MA's), (40, 39371), (49, 39449), (63, 39545), (70, 39566), (80, 39611), (87, 39647),

Gene: ShiLan_55 Start: 38649, Stop: 38996, Start Num: 22

Candidate Starts for ShiLan_55:

(6, 38553), (Start: 22 @38649 has 180 MA's), (Start: 37 @38688 has 1 MA's), (48, 38772), (49, 38775), (63, 38871), (80, 38937), (92, 38991),

Gene: Shipwreck_40 Start: 31614, Stop: 32117, Start Num: 9

Candidate Starts for Shipwreck_40:

(2, 31527), (Start: 9 @31614 has 52 MA's), (Start: 31 @31707 has 5 MA's), (47, 31809), (53, 31854), (96, 32100),

Gene: ShowerHandel_59 Start: 38616, Stop: 38963, Start Num: 22

Candidate Starts for ShowerHandel_59:

(6, 38520), (Start: 22 @38616 has 180 MA's), (Start: 37 @38655 has 1 MA's), (48, 38739), (49, 38742), (63, 38838), (80, 38904), (92, 38958),

Gene: ShroomBoi_58 Start: 39576, Stop: 39923, Start Num: 22

Candidate Starts for ShroomBoi_58:

(4, 39456), (7, 39486), (Start: 22 @39576 has 180 MA's), (Start: 37 @39615 has 1 MA's), (44, 39654), (48, 39699), (49, 39702), (63, 39798), (80, 39864), (92, 39918),

Gene: SiSi_54 Start: 38022, Stop: 38369, Start Num: 22

Candidate Starts for SiSi_54:

(Start: 22 @38022 has 180 MA's), (Start: 37 @38061 has 1 MA's), (49, 38148), (63, 38244), (70, 38265), (80, 38310), (92, 38364),

Gene: Silvy_40 Start: 29489, Stop: 29848, Start Num: 21

Candidate Starts for Silvy_40:

(Start: 21 @29489 has 17 MA's), (39, 29540), (42, 29555), (49, 29624), (50, 29627), (58, 29693), (66, 29732), (69, 29741), (79, 29786), (80, 29789), (90, 29837), (92, 29843),

Gene: SimranZ1_56 Start: 38802, Stop: 39149, Start Num: 22

Candidate Starts for SimranZ1_56:

(Start: 22 @38802 has 180 MA's), (Start: 37 @38841 has 1 MA's), (49, 38928), (63, 39024), (70, 39045), (80, 39090), (87, 39126), (92, 39144),

Gene: SkinnyPete_39 Start: 29165, Stop: 29524, Start Num: 21

Candidate Starts for SkinnyPete_39:

(Start: 21 @29165 has 17 MA's), (Start: 25 @29174 has 3 MA's), (Start: 28 @29180 has 1 MA's), (42, 29231), (50, 29303), (58, 29369), (60, 29381), (66, 29408), (69, 29417), (80, 29465), (90, 29513),

Gene: Slarp_54 Start: 37618, Stop: 37968, Start Num: 26

Candidate Starts for Slarp_54:

(Start: 26 @37618 has 20 MA's), (Start: 33 @37642 has 1 MA's), (34, 37645), (45, 37720), (52, 37759), (58, 37804), (61, 37822), (64, 37843), (66, 37846),

Gene: Sonah_38 Start: 29793, Stop: 30296, Start Num: 9

Candidate Starts for Sonah_38:

(Start: 9 @29793 has 52 MA's), (Start: 31 @29886 has 5 MA's), (47, 29988), (53, 30033), (96, 30279),

Gene: Soul22_62 Start: 40209, Stop: 40553, Start Num: 23

Candidate Starts for Soul22_62:

(8, 40122), (Start: 23 @40209 has 3 MA's), (Start: 37 @40242 has 1 MA's), (77, 40482), (83, 40512), (91, 40545), (92, 40548),

Gene: Sparkdehlily_64 Start: 40334, Stop: 40681, Start Num: 22

Candidate Starts for Sparkdehlily_64:

(Start: 22 @40334 has 180 MA's), (Start: 37 @40373 has 1 MA's), (40, 40382), (49, 40460), (63, 40556), (70, 40577), (80, 40622), (87, 40658), (92, 40676),

Gene: Spartacus_58 Start: 39286, Stop: 39633, Start Num: 22

Candidate Starts for Spartacus_58:

(Start: 22 @39286 has 180 MA's), (Start: 37 @39325 has 1 MA's), (40, 39334), (49, 39412), (63, 39508), (80, 39574),

Gene: Spikelee_63 Start: 40906, Stop: 41253, Start Num: 22

Candidate Starts for Spikelee_63:

(Start: 22 @40906 has 180 MA's), (Start: 37 @40945 has 1 MA's), (40, 40954), (48, 41029), (49, 41032), (63, 41128), (70, 41149), (80, 41194), (87, 41230), (92, 41248),

Gene: Spoonbill_53 Start: 37196, Stop: 37543, Start Num: 22

Candidate Starts for Spoonbill_53:

(Start: 22 @37196 has 180 MA's), (Start: 37 @37235 has 1 MA's), (44, 37274), (48, 37319), (49, 37322), (63, 37418), (69, 37436), (70, 37439), (74, 37463), (79, 37481), (80, 37484),

Gene: Squirty_52 Start: 37353, Stop: 37712, Start Num: 21

Candidate Starts for Squirty_52:

(20, 37350), (Start: 21 @37353 has 17 MA's), (Start: 25 @37362 has 3 MA's), (Start: 28 @37368 has 1 MA's), (36, 37395), (42, 37419), (49, 37488), (50, 37491), (58, 37557), (66, 37596), (69, 37605), (79, 37650), (80, 37653), (90, 37701), (92, 37707),

Gene: Squirty_59 Start: 40095, Stop: 40442, Start Num: 22

Candidate Starts for Squirty_59:

(Start: 22 @40095 has 180 MA's), (Start: 37 @40134 has 1 MA's), (40, 40143), (49, 40221), (63, 40317), (80, 40383), (92, 40437),

Gene: StAnnes_55 Start: 39501, Stop: 39848, Start Num: 22

Candidate Starts for StAnnes_55:

(Start: 22 @39501 has 180 MA's), (Start: 37 @39540 has 1 MA's), (49, 39627), (63, 39723), (70, 39744), (80, 39789), (87, 39825), (92, 39843),

Gene: Stap_54 Start: 37997, Stop: 38344, Start Num: 22

Candidate Starts for Stap_54:

(Start: 22 @37997 has 180 MA's), (Start: 37 @38036 has 1 MA's), (44, 38075), (48, 38120), (49, 38123), (63, 38219), (69, 38237), (70, 38240), (74, 38264), (79, 38282), (80, 38285),

Gene: Starcevich_55 Start: 38573, Stop: 38920, Start Num: 22

Candidate Starts for Starcevich_55:

(6, 38477), (Start: 22 @38573 has 180 MA's), (Start: 37 @38612 has 1 MA's), (48, 38696), (49, 38699), (63, 38795), (80, 38861), (92, 38915),

Gene: StevieRay_38 Start: 29756, Stop: 30259, Start Num: 9

Candidate Starts for StevieRay_38:

(2, 29669), (Start: 9 @29756 has 52 MA's), (Start: 31 @29849 has 5 MA's), (47, 29951), (53, 29996), (91, 30170), (96, 30242),

Gene: StressBall_38 Start: 30054, Stop: 30557, Start Num: 9

Candidate Starts for StressBall_38:

(2, 29967), (Start: 9 @30054 has 52 MA's), (Start: 31 @30147 has 5 MA's), (47, 30249), (53, 30294), (91, 30468), (96, 30540),

Gene: Strokeseat_52 Start: 36732, Stop: 37079, Start Num: 22

Candidate Starts for Strokeseat_52:

(4, 36612), (Start: 22 @36732 has 180 MA's), (Start: 37 @36771 has 1 MA's), (44, 36810), (48, 36855), (49, 36858), (63, 36954), (80, 37020),

Gene: SuperGrey_60 Start: 40809, Stop: 41156, Start Num: 22

Candidate Starts for SuperGrey_60:

(Start: 22 @40809 has 180 MA's), (Start: 37 @40848 has 1 MA's), (49, 40935), (63, 41031), (70, 41052), (80, 41097), (92, 41151),

Gene: SwagPiggett_61 Start: 40924, Stop: 41271, Start Num: 22

Candidate Starts for SwagPiggett_61:

(4, 40804), (10, 40855), (Start: 22 @40924 has 180 MA's), (Start: 37 @40963 has 1 MA's), (48, 41047), (49, 41050), (63, 41146), (80, 41212), (92, 41266),

Gene: TChen_56 Start: 39822, Stop: 40172, Start Num: 22

Candidate Starts for TChen_56:

(Start: 22 @39822 has 180 MA's), (Start: 37 @39861 has 1 MA's), (83, 40131), (91, 40164), (92, 40167),

Gene: TDanisky_64 Start: 40334, Stop: 40681, Start Num: 22

Candidate Starts for TDanisky_64:

(Start: 22 @40334 has 180 MA's), (Start: 37 @40373 has 1 MA's), (40, 40382), (49, 40460), (63, 40556), (70, 40577), (80, 40622), (87, 40658), (92, 40676),

Gene: Taj_60 Start: 40382, Stop: 40729, Start Num: 22

Candidate Starts for Taj_60:

(4, 40262), (Start: 22 @40382 has 180 MA's), (Start: 37 @40421 has 1 MA's), (44, 40460), (48, 40505), (49, 40508), (63, 40604), (70, 40625), (80, 40670), (87, 40706), (92, 40724),

Gene: Taquito_54 Start: 37946, Stop: 38296, Start Num: 26

Candidate Starts for Taquito_54:

(Start: 26 @37946 has 20 MA's), (Start: 33 @37970 has 1 MA's), (34, 37973), (45, 38048), (52, 38087), (58, 38132), (61, 38150), (64, 38171), (66, 38174),

Gene: Techage_38 Start: 29830, Stop: 30336, Start Num: 9

Candidate Starts for Techage_38:

(Start: 9 @29830 has 52 MA's), (Start: 31 @29923 has 5 MA's), (47, 30028), (53, 30073), (96, 30319),

Gene: Tesla_61 Start: 35833, Stop: 36171, Start Num: 32

Candidate Starts for Tesla_61:

(Start: 32 @35833 has 17 MA's), (52, 35959), (58, 35998), (82, 36115), (89, 36151), (92, 36160),

Gene: Thespis_38 Start: 29790, Stop: 30293, Start Num: 9

Candidate Starts for Thespis_38:

(2, 29703), (Start: 9 @29790 has 52 MA's), (Start: 31 @29883 has 5 MA's), (47, 29985), (53, 30030), (56, 30045), (96, 30276),

Gene: ThetaBob_60 Start: 39893, Stop: 40246, Start Num: 21

Candidate Starts for ThetaBob_60:

(Start: 21 @39893 has 17 MA's), (Start: 37 @39935 has 1 MA's), (77, 40175), (83, 40205), (91, 40238), (92, 40241),

Gene: ThulaThula_44 Start: 34021, Stop: 34518, Start Num: 9

Candidate Starts for ThulaThula_44:

(1, 33904), (Start: 9 @34021 has 52 MA's), (Start: 31 @34114 has 5 MA's), (35, 34132), (39, 34144), (53, 34255), (73, 34357), (76, 34366), (84, 34405),

Gene: TootsiePop_53 Start: 37256, Stop: 37618, Start Num: 21

Candidate Starts for TootsiePop_53:

(Start: 21 @37256 has 17 MA's), (Start: 22 @37259 has 180 MA's), (Start: 32 @37286 has 17 MA's), (39, 37307), (42, 37322), (46, 37373), (50, 37394), (58, 37460), (80, 37556), (82, 37568), (90, 37607),

Gene: Tootsieroll_57 Start: 37945, Stop: 38292, Start Num: 22

Candidate Starts for Tootsieroll_57:

(Start: 22 @37945 has 180 MA's), (Start: 37 @37984 has 1 MA's), (44, 38023), (48, 38068), (49, 38071), (63, 38167), (80, 38233),

Gene: Toron_58 Start: 39897, Stop: 40268, Start Num: 17

Candidate Starts for Toron_58:

(Start: 17 @39897 has 1 MA's), (38, 39978), (58, 40116), (62, 40140), (65, 40155), (67, 40158), (74, 40191), (83, 40230), (86, 40248), (87, 40251), (88, 40257),

Gene: Tortellini_47 Start: 37188, Stop: 37532, Start Num: 28

Candidate Starts for Tortellini_47:

(14, 37122), (20, 37170), (Start: 21 @37173 has 17 MA's), (Start: 25 @37182 has 3 MA's), (Start: 28 @37188 has 1 MA's), (42, 37239), (50, 37311), (58, 37377), (69, 37425), (80, 37473), (90, 37521), (92, 37527),

Gene: Totinger_55 Start: 37875, Stop: 38222, Start Num: 22

Candidate Starts for Totinger_55:

(4, 37755), (7, 37785), (Start: 22 @37875 has 180 MA's), (Start: 37 @37914 has 1 MA's), (48, 37998), (49, 38001), (63, 38097), (80, 38163),

Gene: Tweety_56 Start: 40125, Stop: 40472, Start Num: 22

Candidate Starts for Tweety_56:

(4, 40005), (Start: 22 @40125 has 180 MA's), (Start: 37 @40164 has 1 MA's), (44, 40203), (48, 40248), (49, 40251), (63, 40347), (70, 40368), (80, 40413), (87, 40449), (92, 40467),

Gene: UncleRicky_55 Start: 38856, Stop: 39203, Start Num: 22

Candidate Starts for UncleRicky_55:

(6, 38760), (7, 38766), (Start: 22 @38856 has 180 MA's), (Start: 37 @38895 has 1 MA's), (48, 38979), (49, 38982), (63, 39078),

Gene: VRedHorse_56 Start: 37887, Stop: 38279, Start Num: 16

Candidate Starts for VRedHorse_56:

(Start: 16 @37887 has 11 MA's), (18, 37905), (Start: 37 @37971 has 1 MA's), (49, 38058), (63, 38154), (70, 38175), (80, 38220), (87, 38256), (92, 38274),

Gene: VasuNzinga_63 Start: 35902, Stop: 36240, Start Num: 32

Candidate Starts for VasuNzinga_63:

(Start: 32 @35902 has 17 MA's), (52, 36028), (58, 36067), (82, 36184), (89, 36220), (92, 36229),

Gene: Velveteen_51 Start: 34814, Stop: 35161, Start Num: 22

Candidate Starts for Velveteen_51:

(Start: 22 @34814 has 180 MA's), (Start: 37 @34853 has 1 MA's), (44, 34892), (48, 34937), (49, 34940), (63, 35036), (80, 35102),

Gene: Venti_38 Start: 29807, Stop: 30310, Start Num: 9

Candidate Starts for Venti_38:

(Start: 9 @29807 has 52 MA's), (Start: 31 @29900 has 5 MA's), (47, 30002), (53, 30047), (96, 30293),

Gene: Veteran_53 Start: 37711, Stop: 38058, Start Num: 22

Candidate Starts for Veteran_53:

(Start: 22 @37711 has 180 MA's), (Start: 37 @37750 has 1 MA's), (40, 37759), (49, 37837), (63, 37933), (70, 37954), (80, 37999), (87, 38035), (92, 38053),

Gene: Vidya_38 Start: 29840, Stop: 30343, Start Num: 9

Candidate Starts for Vidya_38:

(Start: 9 @29840 has 52 MA's), (Start: 31 @29933 has 5 MA's), (47, 30035), (53, 30080), (96, 30326),

Gene: Vivum_59 Start: 38934, Stop: 39281, Start Num: 22

Candidate Starts for Vivum_59:

(Start: 22 @38934 has 180 MA's), (Start: 37 @38973 has 1 MA's), (40, 38982), (44, 39012), (48, 39057), (49, 39060), (63, 39156), (70, 39177), (80, 39222), (92, 39276),

Gene: Wachhund_58 Start: 38925, Stop: 39272, Start Num: 22

Candidate Starts for Wachhund_58:

(Start: 22 @38925 has 180 MA's), (Start: 37 @38964 has 1 MA's), (40, 38973), (49, 39051), (63, 39147), (70, 39168), (80, 39213), (87, 39249), (92, 39267),

Gene: Wee_59 Start: 40451, Stop: 40798, Start Num: 22

Candidate Starts for Wee_59:

(4, 40331), (Start: 22 @40451 has 180 MA's), (Start: 37 @40490 has 1 MA's), (44, 40529), (48, 40574), (49, 40577), (63, 40673), (70, 40694), (80, 40739), (87, 40775), (92, 40793),

Gene: Whatsapiecost_57 Start: 38209, Stop: 38556, Start Num: 22

Candidate Starts for Whatsapiecost_57:

(Start: 22 @38209 has 180 MA's), (Start: 37 @38248 has 1 MA's), (40, 38257), (49, 38335), (63, 38431), (80, 38497), (92, 38551),

Gene: Whouxphf_53 Start: 38528, Stop: 38875, Start Num: 22

Candidate Starts for Whouxphf_53:

(4, 38408), (7, 38438), (10, 38459), (Start: 22 @38528 has 180 MA's), (Start: 37 @38567 has 1 MA's), (48, 38651), (49, 38654), (63, 38750), (70, 38771), (92, 38870),

Gene: Willsammy_37 Start: 29537, Stop: 30040, Start Num: 9

Candidate Starts for Willsammy_37:

(2, 29450), (Start: 9 @29537 has 52 MA's), (Start: 31 @29630 has 5 MA's), (47, 29732), (53, 29777), (91, 29951), (96, 30023),

Gene: Wintermute_54 Start: 37848, Stop: 38198, Start Num: 26

Candidate Starts for Wintermute_54:

(Start: 26 @37848 has 20 MA's), (Start: 33 @37872 has 1 MA's), (34, 37875), (45, 37950), (52, 37989), (58, 38034), (61, 38052), (64, 38073), (66, 38076),

Gene: XFactor_55 Start: 38026, Stop: 38361, Start Num: 29

Candidate Starts for XFactor_55:

(Start: 29 @38026 has 20 MA's), (Start: 37 @38053 has 1 MA's), (40, 38062), (49, 38140), (63, 38236), (70, 38257), (80, 38302), (87, 38338), (92, 38356),

Gene: Xavia_47 Start: 37009, Stop: 37368, Start Num: 21

Candidate Starts for Xavia_47:

(11, 36952), (Start: 21 @37009 has 17 MA's), (Start: 28 @37024 has 1 MA's), (Start: 32 @37039 has 17 MA's), (42, 37075), (50, 37147), (58, 37213), (66, 37252), (80, 37309), (90, 37357),

Gene: Xeno_40 Start: 29132, Stop: 29635, Start Num: 9

Candidate Starts for Xeno_40:

(2, 29045), (Start: 9 @29132 has 52 MA's), (Start: 31 @29225 has 5 MA's), (47, 29327), (53, 29372), (56, 29387), (96, 29618),

Gene: Xula_34 Start: 29084, Stop: 29521, Start Num: 9

Candidate Starts for Xula_34:

(5, 29060), (Start: 9 @29084 has 52 MA's), (58, 29363), (60, 29375), (80, 29459),

Gene: Y10_53 Start: 37767, Stop: 38120, Start Num: 26

Candidate Starts for Y10_53:

(Start: 26 @37767 has 20 MA's), (Start: 33 @37791 has 1 MA's), (34, 37794), (45, 37869), (52, 37908), (58, 37956), (61, 37974), (64, 37995), (66, 37998),

Gene: Y2_53 Start: 37767, Stop: 38120, Start Num: 26

Candidate Starts for Y2_53:

(Start: 26 @37767 has 20 MA's), (Start: 33 @37791 has 1 MA's), (34, 37794), (45, 37869), (52, 37908), (58, 37956), (61, 37974), (64, 37995), (66, 37998),

Gene: Yorick_55 Start: 38990, Stop: 39337, Start Num: 22

Candidate Starts for Yorick_55:

(6, 38894), (Start: 22 @38990 has 180 MA's), (Start: 37 @39029 has 1 MA's), (48, 39113), (49, 39116), (63, 39212), (80, 39278), (92, 39332),

Gene: Yoshi_68 Start: 40172, Stop: 40510, Start Num: 30

Candidate Starts for Yoshi_68:

(Start: 30 @40172 has 3 MA's), (Start: 37 @40199 has 1 MA's), (77, 40439), (83, 40469), (91, 40502), (92, 40505),

Gene: Zapner_69 Start: 40486, Stop: 40875, Start Num: 16

Candidate Starts for Zapner_69:

(13, 40474), (Start: 16 @40486 has 11 MA's), (18, 40504), (Start: 27 @40537 has 1 MA's), (Start: 37 @40567 has 1 MA's), (80, 40816), (83, 40834), (91, 40867), (92, 40870),

Gene: Zerg_56 Start: 38412, Stop: 38747, Start Num: 29

Candidate Starts for Zerg_56:

(Start: 29 @38412 has 20 MA's), (Start: 37 @38439 has 1 MA's), (49, 38526), (63, 38622), (70, 38643), (80, 38688), (87, 38724), (92, 38742),

Gene: Zilizabeth_38 Start: 29839, Stop: 30342, Start Num: 9

Candidate Starts for Zilizabeth_38:

(Start: 9 @29839 has 52 MA's), (Start: 31 @29932 has 5 MA's), (47, 30034), (53, 30079), (96, 30325),

Gene: Zizzle_60 Start: 40243, Stop: 40590, Start Num: 22

Candidate Starts for Zizzle_60:

(4, 40123), (10, 40174), (Start: 22 @40243 has 180 MA's), (Start: 37 @40282 has 1 MA's), (40, 40291), (49, 40369), (63, 40465), (80, 40531), (92, 40585),